

Data Path : Z:\voasrv\HPCHEM1\MSVOA_X\Data\VX011423\
 Data File : VX033734.D
 Acq On : 13 Jan 2023 19:47
 Operator : JC/MD
 Sample : PB150223ZHE#06
 Misc : 5.0mL/MSVOA_X/WATER
 ALS Vial : 17 Sample Multiplier: 1

Instrument :
 MSVOA_X
 ClientSampleId :
 PB150223ZHE#06

Quant Time: Jan 16 05:39:16 2023
 Quant Method : Z:\voasrv\HPCHEM1\MSVOA_X\Method\82X011123W.M
 Quant Title : SW846 8260
 QLast Update : Wed Jan 11 14:48:42 2023
 Response via : Initial Calibration

Compound	R.T.	QIon	Response	Conc	Units	Dev(Min)

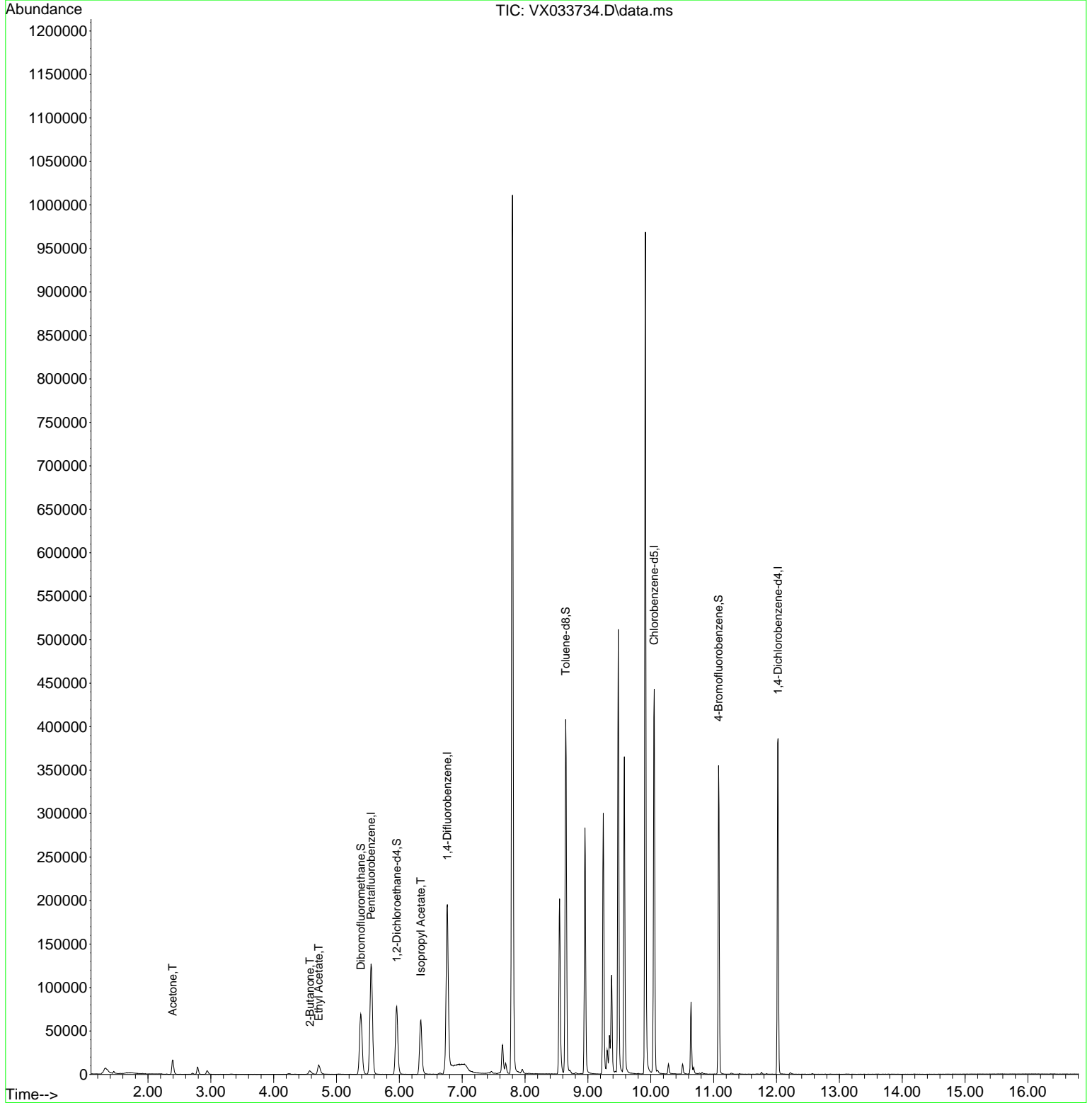
Internal Standards						
1) Pentafluorobenzene	5.550	168	126017	50.000	ug/l	0.00
34) 1,4-Difluorobenzene	6.763	114	191058	50.000	ug/l	0.00
63) Chlorobenzene-d5	10.055	117	196690	50.000	ug/l	0.00
72) 1,4-Dichlorobenzene-d4	12.024	152	84005	50.000	ug/l	0.00
System Monitoring Compounds						
33) 1,2-Dichloroethane-d4	5.958	65	77582	58.471	ug/l	0.00
Spiked Amount	50.000	Range	78 - 117	Recovery	=	116.940%
35) Dibromofluoromethane	5.385	113	59445	50.107	ug/l	0.00
Spiked Amount	50.000	Range	75 - 124	Recovery	=	100.220%
50) Toluene-d8	8.647	98	236443	54.700	ug/l	0.00
Spiked Amount	50.000	Range	92 - 112	Recovery	=	109.400%
62) 4-Bromofluorobenzene	11.079	95	86822	54.099	ug/l	0.00
Spiked Amount	50.000	Range	83 - 123	Recovery	=	108.200%
Target Compounds						
						Qvalue
16) Acetone	2.392	43	22587	36.250	ug/l	97
25) 2-Butanone	4.574	43	6728	7.761	ug/l	99
37) Ethyl Acetate	4.715	43	21090	10.508	ug/l	96
43) Isopropyl Acetate	6.342	43	88344	32.320	ug/l	97

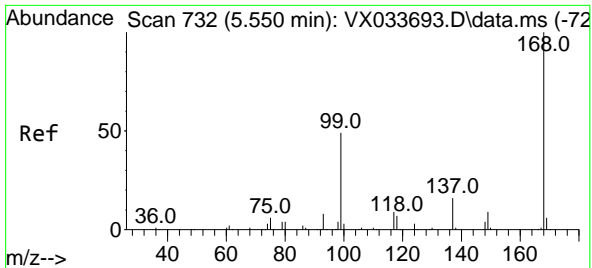
(#) = qualifier out of range (m) = manual integration (+) = signals summed

Data Path : Z:\voasrv\HPCHEM1\MSVOA_X\Data\VX011423\
 Data File : VX033734.D
 Acq On : 13 Jan 2023 19:47
 Operator : JC/MD
 Sample : PB150223ZHE#06
 Misc : 5.0mL/MSVOA_X/WATER
 ALS Vial : 17 Sample Multiplier: 1

Instrument :
 MSVOA_X
 ClientSampleId :
 PB150223ZHE#06

Quant Time: Jan 16 05:39:16 2023
 Quant Method : Z:\voasrv\HPCHEM1\MSVOA_X\Method\82X011123W.M
 Quant Title : SW846 8260
 QLast Update : Wed Jan 11 14:48:42 2023
 Response via : Initial Calibration

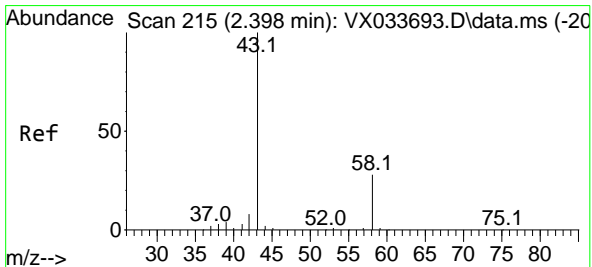
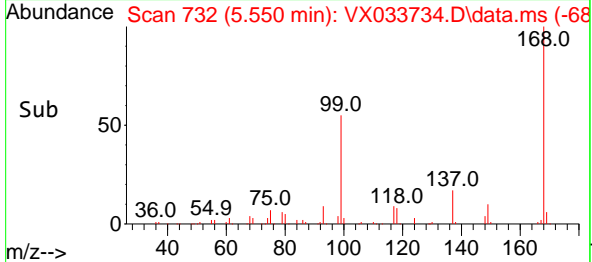
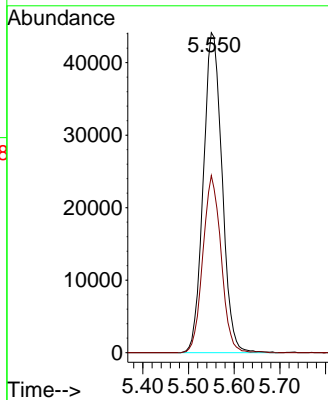
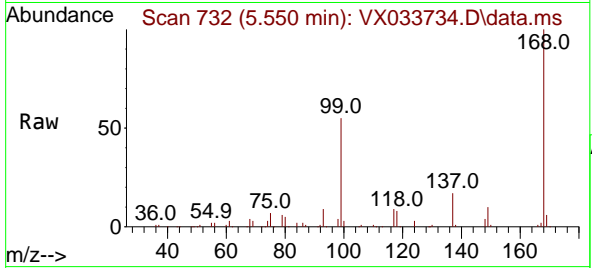




#1
 Pentafluorobenzene
 Concen: 50.000 ug/l
 RT: 5.550 min Scan# 71
 Delta R.T. -0.000 min
 Lab File: VX033734.D
 Acq: 13 Jan 2023 19:47

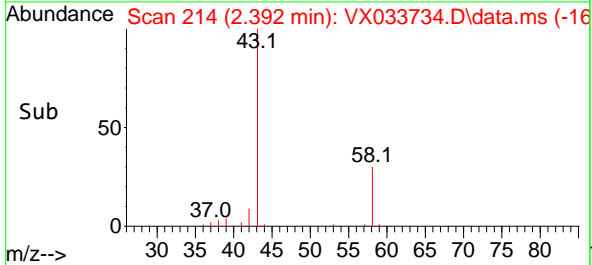
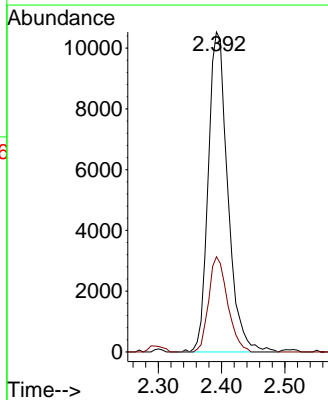
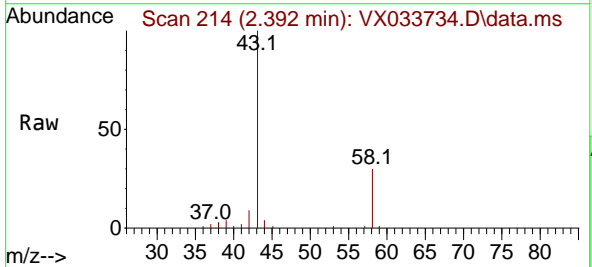
Instrument :
 MSVOA_X
 ClientSampleId :
 PB150223ZHE#06

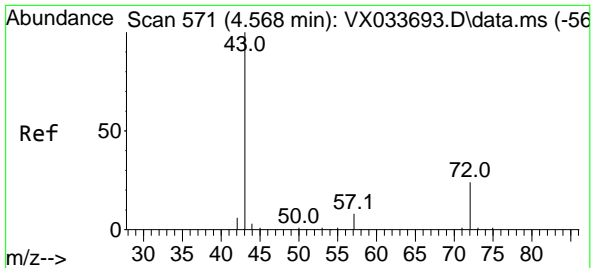
Tgt Ion:168 Resp: 126017
 Ion Ratio Lower Upper
 168 100
 99 55.3 39.6 59.4



#16
 Acetone
 Concen: 36.250 ug/l
 RT: 2.392 min Scan# 214
 Delta R.T. -0.006 min
 Lab File: VX033734.D
 Acq: 13 Jan 2023 19:47

Tgt Ion: 43 Resp: 22587
 Ion Ratio Lower Upper
 43 100
 58 29.7 22.6 33.8

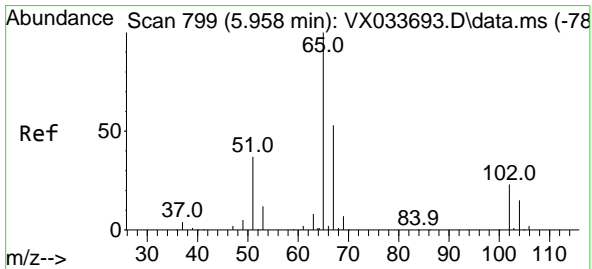
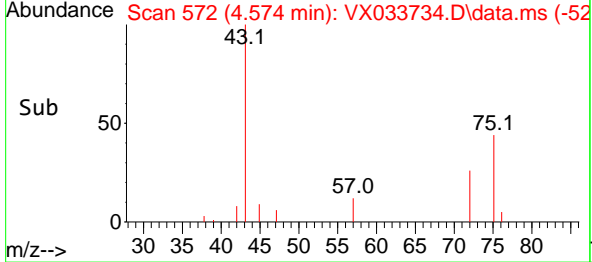
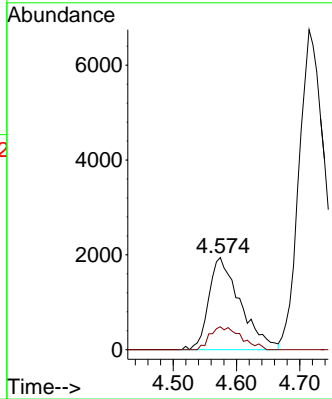
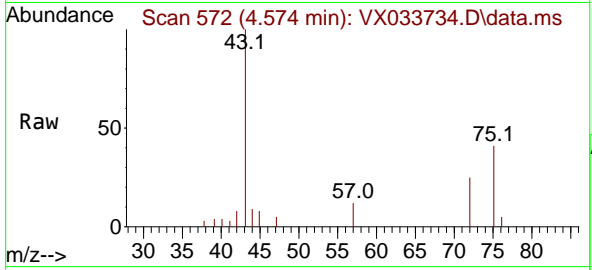




#25
 2-Butanone
 Concen: 7.761 ug/l
 RT: 4.574 min Scan# 51
 Delta R.T. 0.006 min
 Lab File: VX033734.D
 Acq: 13 Jan 2023 19:47

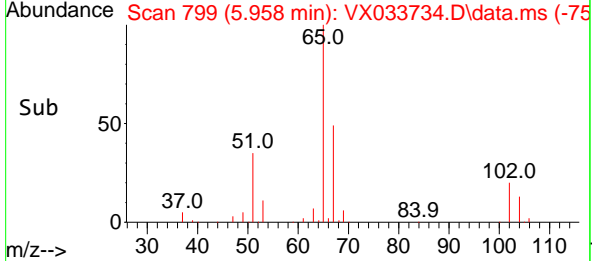
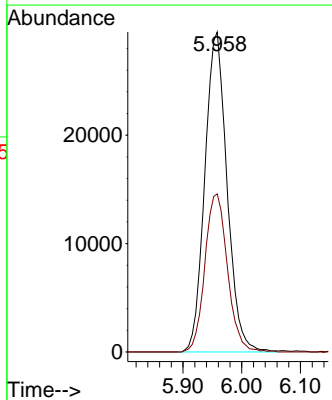
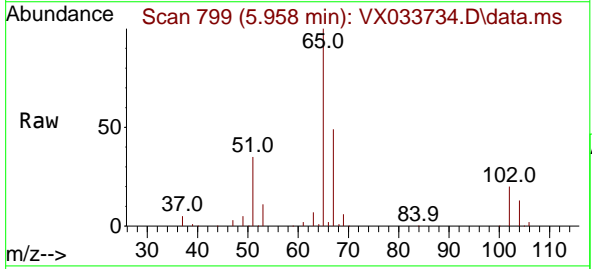
Instrument : MSVOA_X
 ClientSampleId : PB150223ZHE#06

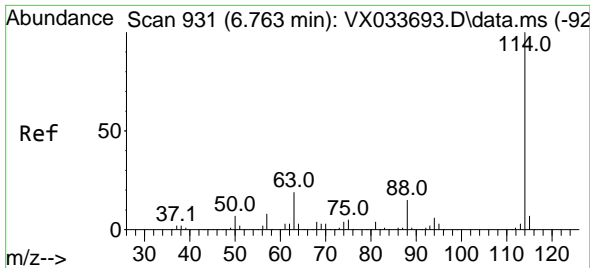
Tgt Ion: 43 Resp: 6728
 Ion Ratio Lower Upper
 43 100
 72 24.8 19.4 29.2



#33
 1,2-Dichloroethane-d4
 Concen: 58.471 ug/l
 RT: 5.958 min Scan# 799
 Delta R.T. -0.000 min
 Lab File: VX033734.D
 Acq: 13 Jan 2023 19:47

Tgt Ion: 65 Resp: 77582
 Ion Ratio Lower Upper
 65 100
 67 50.3 0.0 104.8

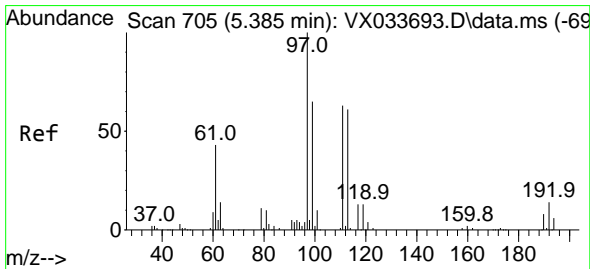
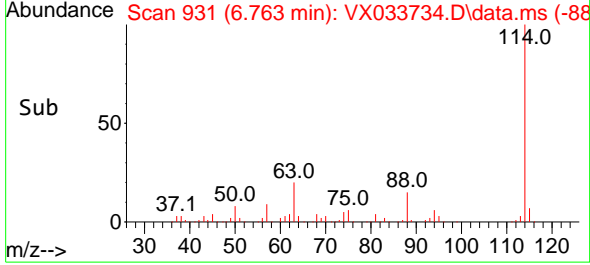
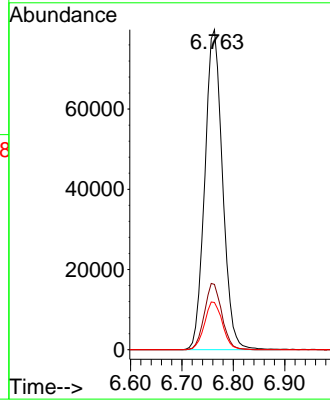
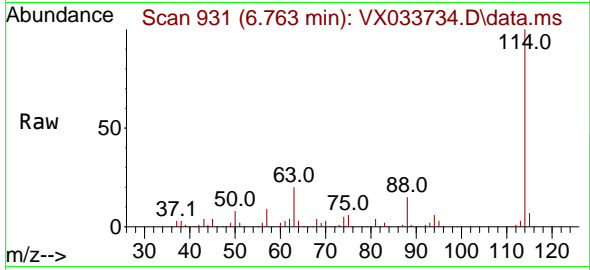




#34
 1,4-Difluorobenzene
 Concen: 50.000 ug/l
 RT: 6.763 min Scan# 91
 Delta R.T. 0.000 min
 Lab File: VX033734.D
 Acq: 13 Jan 2023 19:47

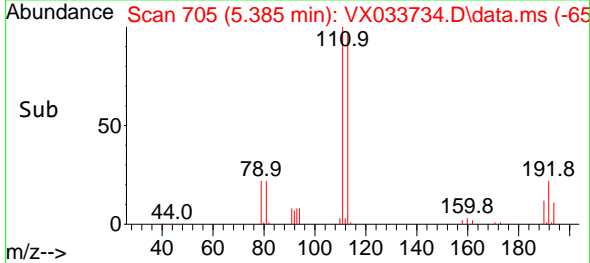
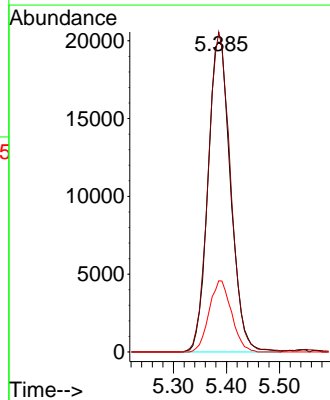
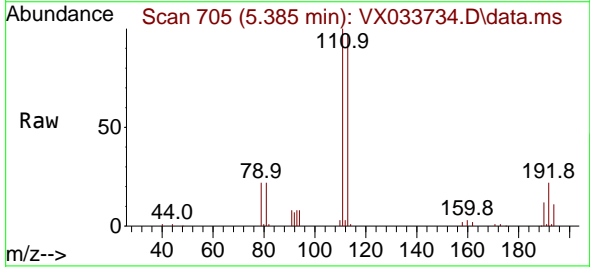
Instrument :
 MSVOA_X
 ClientSampleId :
 PB150223ZHE#06

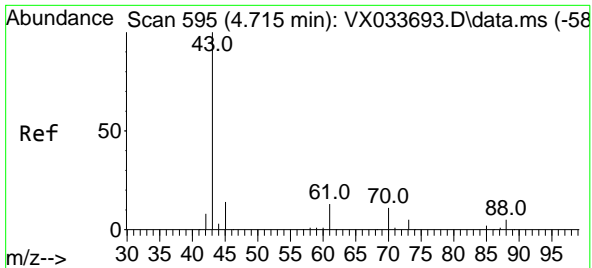
Tgt Ion	Resp	Lower	Upper
114	100		
63	20.4	0.0	37.4
88	14.7	0.0	30.6



#35
 Dibromofluoromethane
 Concen: 50.107 ug/l
 RT: 5.385 min Scan# 705
 Delta R.T. -0.000 min
 Lab File: VX033734.D
 Acq: 13 Jan 2023 19:47

Tgt Ion	Resp	Lower	Upper
113	100		
111	101.6	83.0	124.6
192	22.5	19.0	28.4

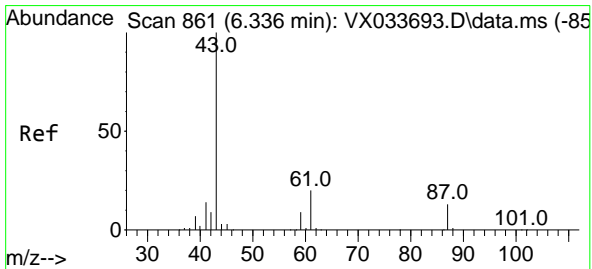
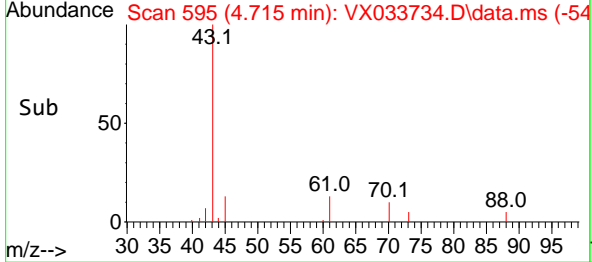
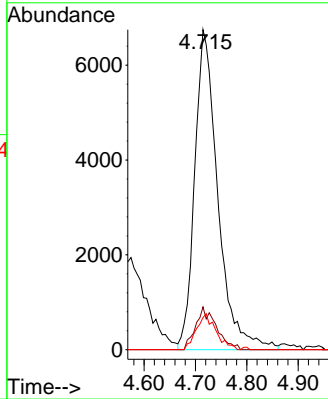
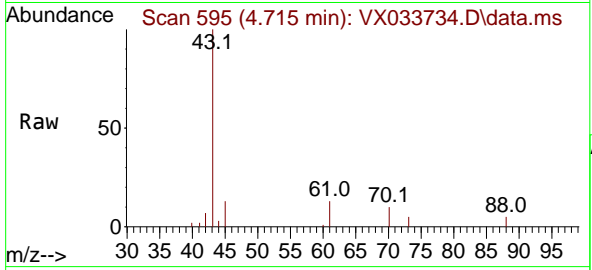




#37
 Ethyl Acetate
 Concen: 10.508 ug/l
 RT: 4.715 min Scan# 595
 Delta R.T. -0.000 min
 Lab File: VX033734.D
 Acq: 13 Jan 2023 19:47

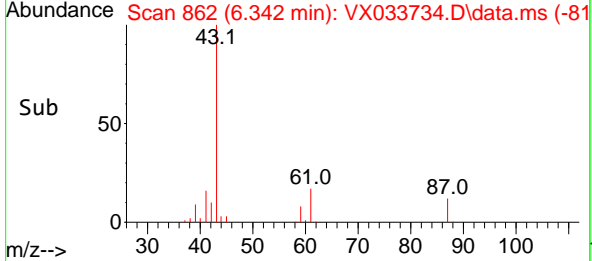
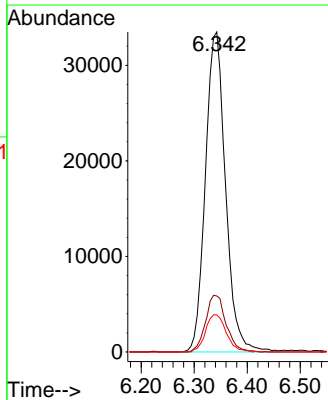
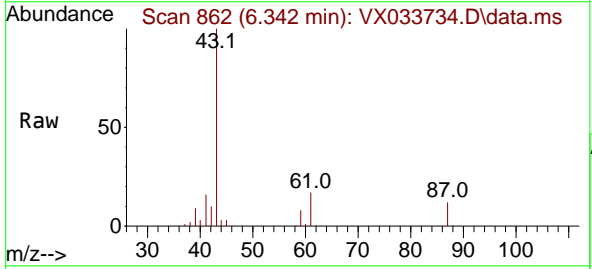
Instrument : MSVOA_X
 ClientSampleId : PB150223ZHE#06

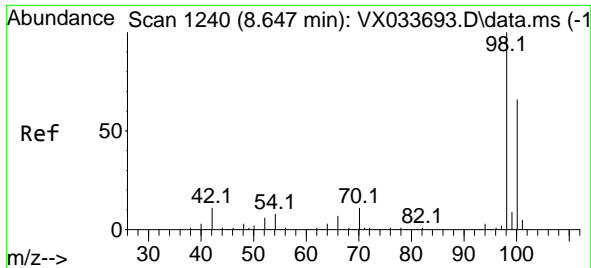
Tgt Ion	Resp	Lower	Upper
43	21090		
61	12.0	11.1	16.7
70	9.5	8.5	12.7



#43
 Isopropyl Acetate
 Concen: 32.320 ug/l
 RT: 6.342 min Scan# 862
 Delta R.T. 0.006 min
 Lab File: VX033734.D
 Acq: 13 Jan 2023 19:47

Tgt Ion	Resp	Lower	Upper
43	88344		
61	18.0	15.7	23.5
87	12.0	10.6	15.8

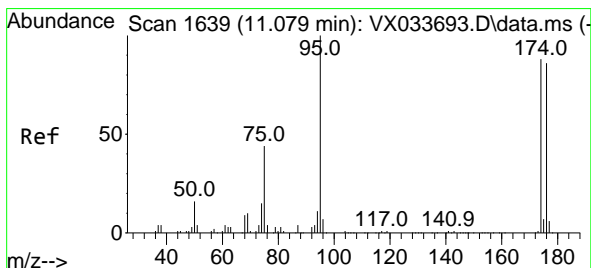
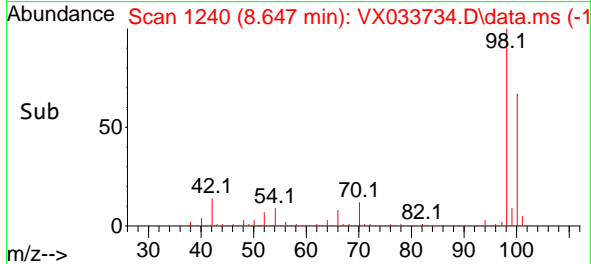
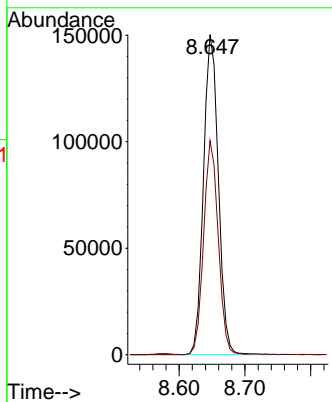
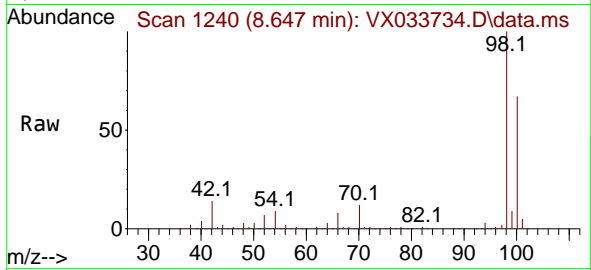




#50
 Toluene-d8
 Concen: 54.700 ug/l
 RT: 8.647 min Scan# 11
 Delta R.T. -0.000 min
 Lab File: VX033734.D
 Acq: 13 Jan 2023 19:47

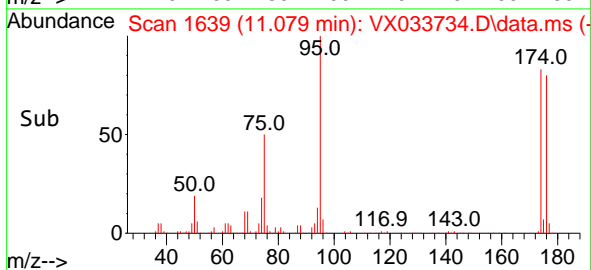
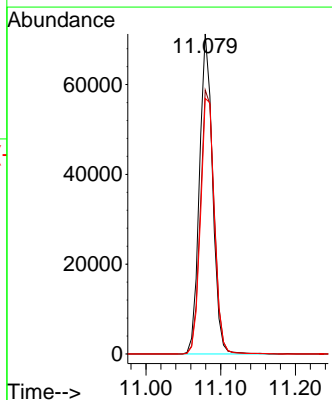
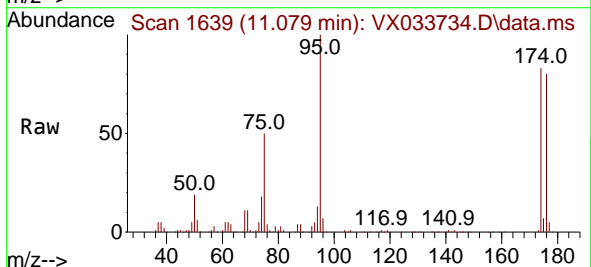
Instrument : MSVOA_X
 ClientSampleId : PB150223ZHE#06

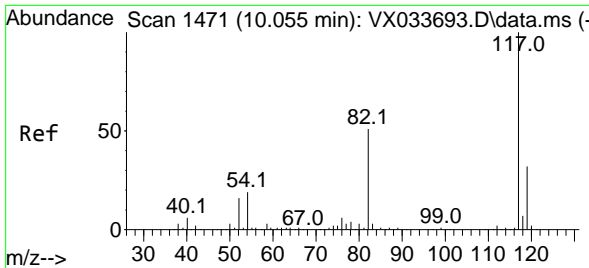
Tgt Ion: 98 Resp: 236443
 Ion Ratio Lower Upper
 98 100
 100 65.6 53.6 80.4



#62
 4-Bromofluorobenzene
 Concen: 54.099 ug/l
 RT: 11.079 min Scan# 1639
 Delta R.T. -0.000 min
 Lab File: VX033734.D
 Acq: 13 Jan 2023 19:47

Tgt Ion: 95 Resp: 86822
 Ion Ratio Lower Upper
 95 100
 174 87.8 0.0 184.4
 176 84.9 0.0 178.8



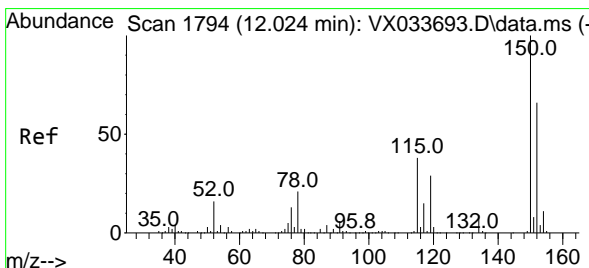
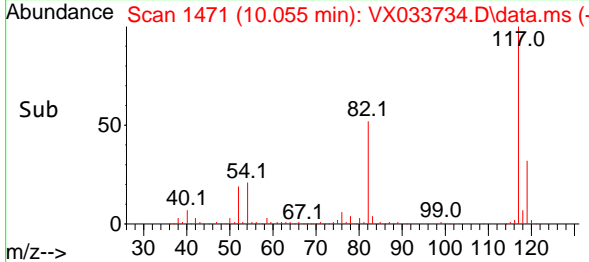
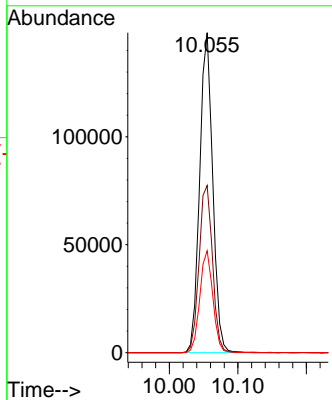
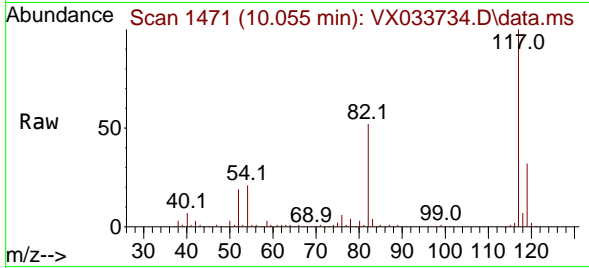


#63
 Chlorobenzene-d5
 Concen: 50.000 ug/l
 RT: 10.055 min Scan# 14
 Delta R.T. 0.000 min
 Lab File: VX033734.D
 Acq: 13 Jan 2023 19:47

Instrument : MSVOA_X
 ClientSampleId : PB150223ZHE#06

Tgt Ion:117 Resp: 196690

Ion	Ratio	Lower	Upper
117	100		
82	52.2	40.6	60.8
119	31.9	25.6	38.4



#72
 1,4-Dichlorobenzene-d4
 Concen: 50.000 ug/l
 RT: 12.024 min Scan# 1794
 Delta R.T. -0.000 min
 Lab File: VX033734.D
 Acq: 13 Jan 2023 19:47

Tgt Ion:152 Resp: 84005

Ion	Ratio	Lower	Upper
152	100		
115	56.4	38.7	116.1
150	158.0	0.0	348.2

