

Data Path : Z:\VOASRV\HPCHEM1\MSVOA X\DATA\VX011519\
 Data File : VX007062.D
 Acq On : 15 Jan 2019 16:53
 Operator : JC/SP
 Sample : K1150-04
 Misc : 5.0mL/MSVOA X/WATER
 ALS Vial : 15 Sample Multiplier: 1

Instrument :
 MSVOA_X
 ClientSampleId :
 KY038PS036-190114

Quant Time: Jan 16 00:05:51 2019
 Quant Method : Z:\VOASRV\HPCHEM1\MSVOA_X\METHOD\82X010819W.M
 Quant Title : SW846 8260
 QLast Update : Tue Jan 08 14:06:59 2019
 Response via : Initial Calibration

Internal Standards	R.T.	QIon	Response	Conc	Units	Dev(Min)
1) Pentafluorobenzene	5.67	168	556210	50.00	ug/l	0.00
34) 1,4-Difluorobenzene	6.86	114	861155	50.00	ug/l	0.00
63) Chlorobenzene-d5	10.11	117	799334	50.00	ug/l	0.00
72) 1,4-Dichlorobenzene-d4	12.08	152	392585	50.00	ug/l	0.00

System Monitoring Compounds

33) 1,2-Dichloroethane-d4	6.07	65	297372	51.16	ug/l	0.00
Spiked Amount	50.000		Recovery	=	102.32%	
35) Dibromofluoromethane	5.50	113	263920	47.86	ug/l	0.00
Spiked Amount	50.000		Recovery	=	95.72%	
50) Toluene-d8	8.71	98	1035900	51.32	ug/l	0.00
Spiked Amount	50.000		Recovery	=	102.64%	
62) 4-Bromofluorobenzene	11.13	95	367964	52.29	ug/l	0.00
Spiked Amount	50.000		Recovery	=	104.58%	

Target Compounds

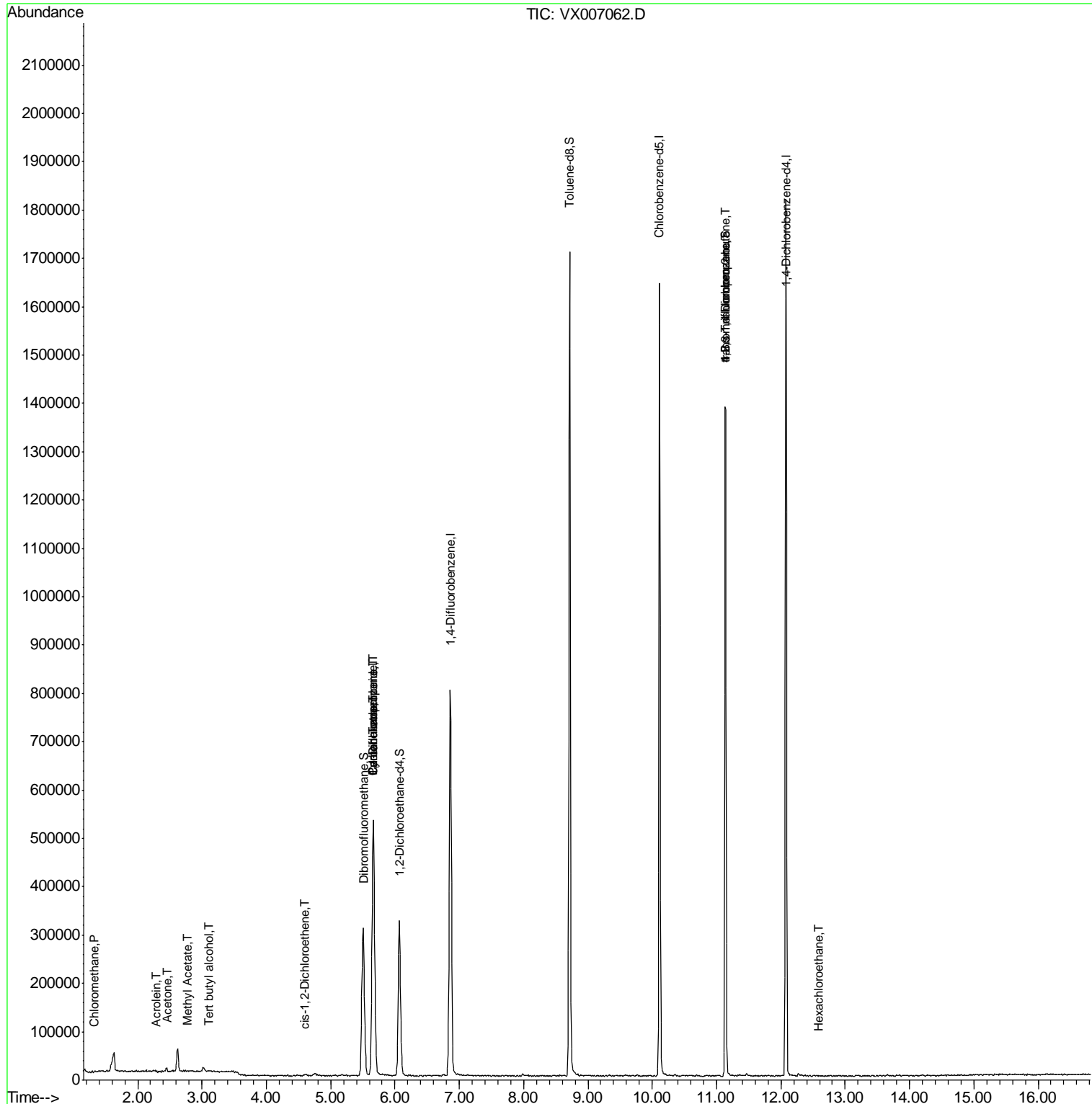
Target Compounds	R.T.	QIon	Response	Conc	Units	Qvalue
3) Chloromethane	1.33	50	1995	0.375	ug/l	94
11) Tert butyl alcohol	3.10	59	388	0.283	ug/l #	72
13) Acrolein	2.29	56	244	3.492	ug/l #	51
16) Acetone	2.45	43	8732	3.039	ug/l #	77
18) Methyl Acetate	2.78	43	1751	0.210	ug/l	91
20) Methylene Chloride	2.87	84	644	Below Cal	#	26
27) cis-1,2-Dichloroethene	4.60	96	1565	0.249	ug/l	89
31) Cyclohexane	5.67	56	9675	1.180	ug/l #	1
36) 1,1-Dichloropropene	5.67	75	35468	4.737	ug/l #	44
38) Carbon Tetrachloride	5.67	117	48797	6.478	ug/l #	16
49) 1,4-Dioxane	7.76	88	242	Below Cal	#	68
76) 1,2,3-Trichloropropane	11.13	75	175559	22.067	ug/l #	40
81) trans-1,4-Dichloro-2-buten	11.13	75	175559	65.341	ug/l #	10
90) Hexachloroethane	12.59	117	45	2.919	ug/l	82

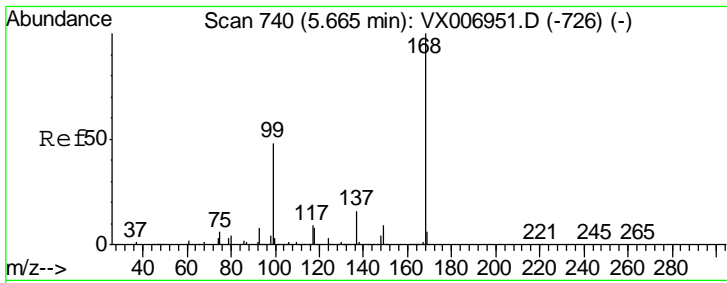
(#) = qualifier out of range (m) = manual integration (+) = signals summed

Data Path : Z:\VOASRV\HPCHEM1\MSVOA X\DATA\VX011519\
 Data File : VX007062.D
 Acq On : 15 Jan 2019 16:53
 Operator : JC/SP
 Sample : K1150-04
 Misc : 5.0mL/MSVOA X/WATER
 ALS Vial : 15 Sample Multiplier: 1

Instrument :
 MSVOA_X
 Client Sampled :
 KY038PS036-190114

Quant Time: Jan 16 00:05:51 2019
 Quant Method : Z:\VOASRV\HPCHEM1\MSVOA_X\METHOD\82X010819W.M
 Quant Title : SW846 8260
 QLast Update : Tue Jan 08 14:06:59 2019
 Response via : Initial Calibration

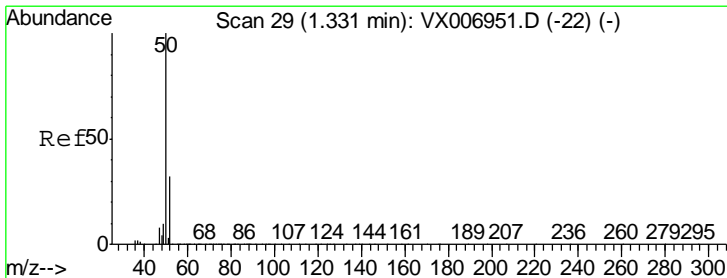
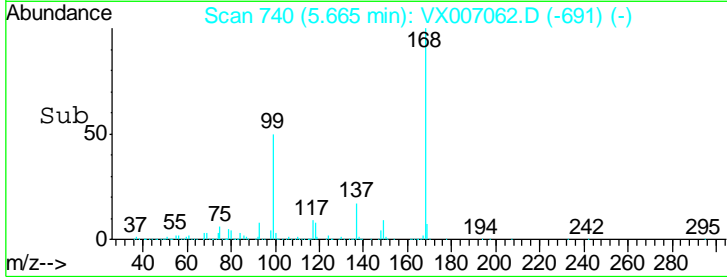
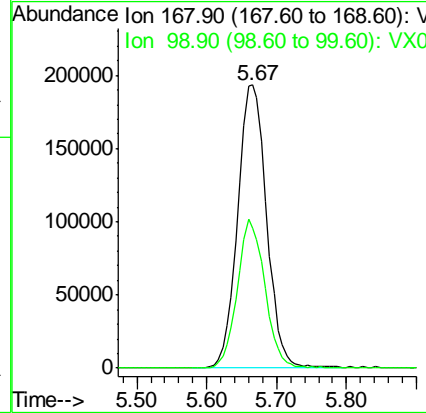
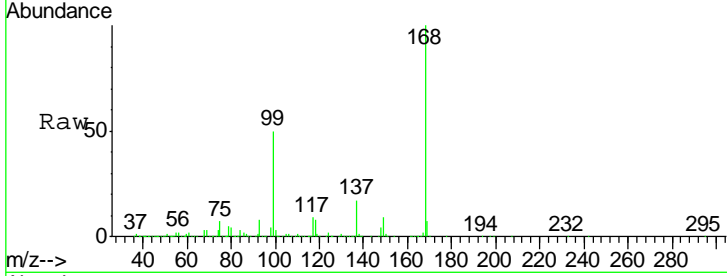




#1
 Pentafluorobenzene
 Concen: 50.000 ug/l
 RT: 5.67 min Scan# 740
 Delta R.T. 0.00 min
 Lab File: VX007062.D
 Acq: 15 Jan 2019 16:53

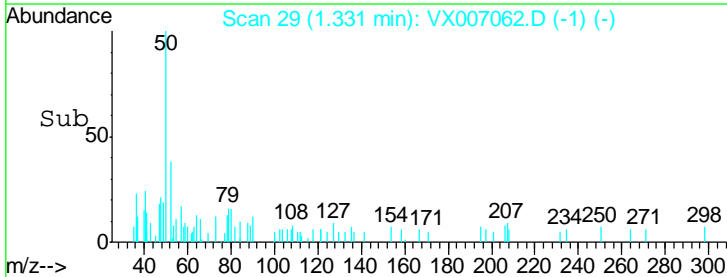
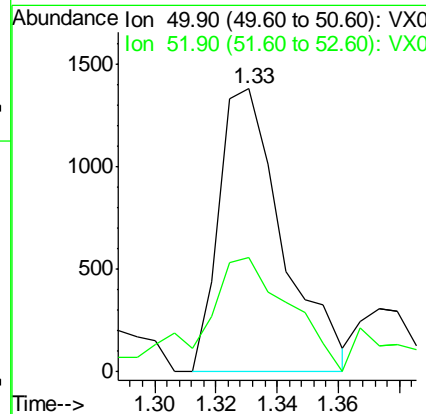
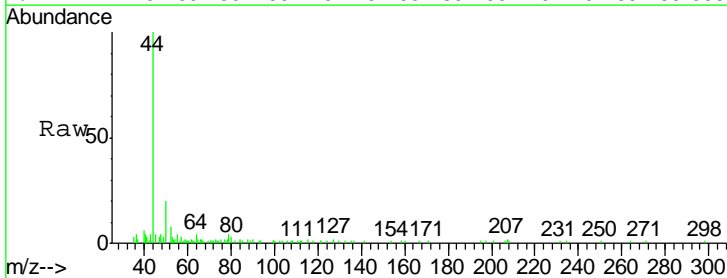
Instrument : MSVOA_X
 ClientSampleId : KY038PS036-190114

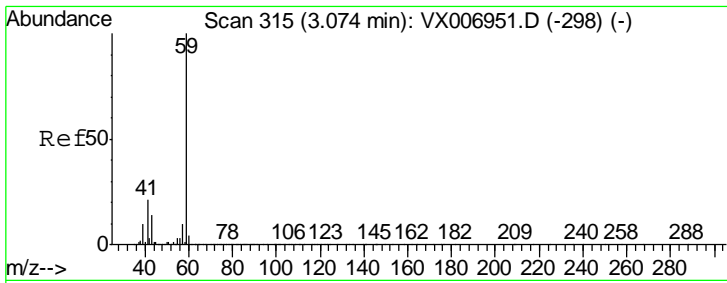
Tgt Ion	Resp	Lower	Upper
168	100		
99	49.5	41.8	62.8



#3
 Chloromethane
 Concen: 0.375 ug/l
 RT: 1.33 min Scan# 29
 Delta R.T. 0.00 min
 Lab File: VX007062.D
 Acq: 15 Jan 2019 16:53

Tgt Ion	Resp	Lower	Upper
50	100		
52	35.2	25.4	38.2

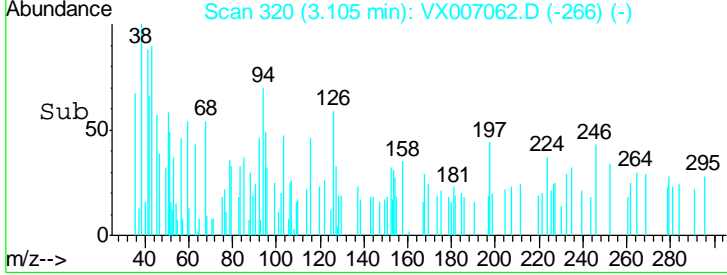
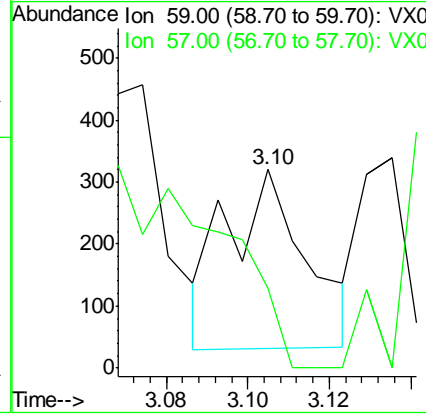
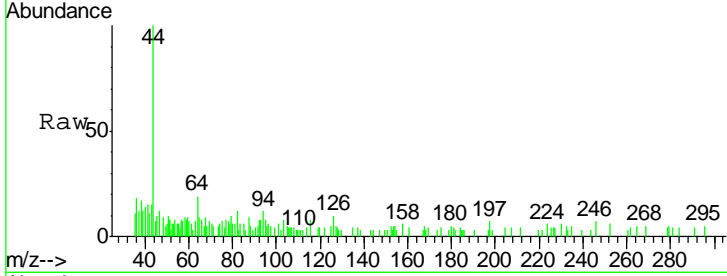




#11
 Tert butyl alcohol
 Concen: 0.283 ug/l
 RT: 3.10 min Scan# 320
 Delta R.T. 0.03 min
 Lab File: VX007062.D
 Acq: 15 Jan 2019 16:53

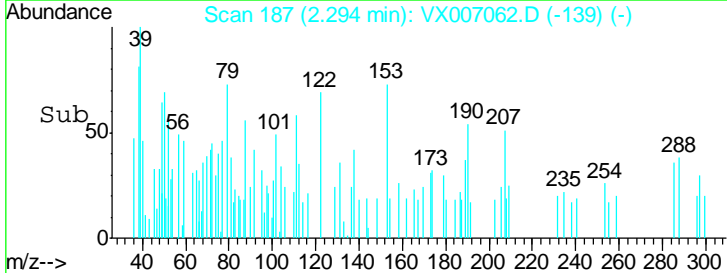
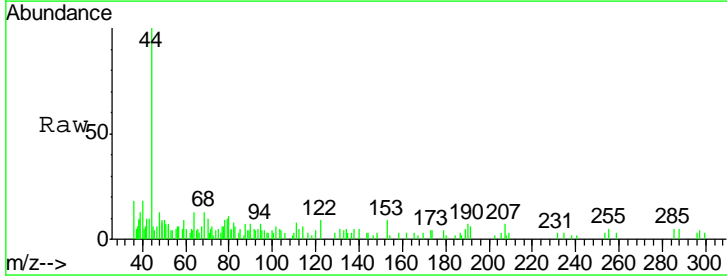
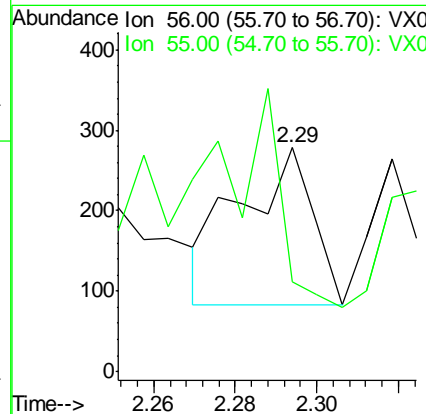
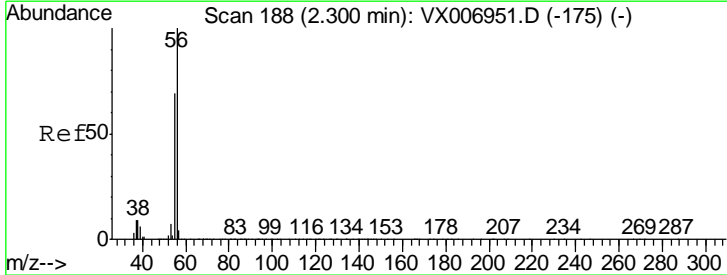
Instrument :
 MSVOA_X
ClientSampled :
 KY038PS036-190114

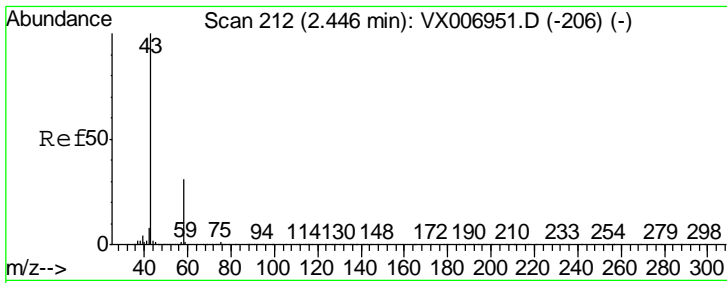
Tgt Ion: 59 Resp: 388
 Ion Ratio Lower Upper
 59 100
 57 0.0 8.5 12.7#



#13
 Acrolein
 Concen: 3.492 ug/l
 RT: 2.29 min Scan# 187
 Delta R.T. -0.01 min
 Lab File: VX007062.D
 Acq: 15 Jan 2019 16:53

Tgt Ion: 56 Resp: 244
 Ion Ratio Lower Upper
 56 100
 55 113.5 58.2 87.4#

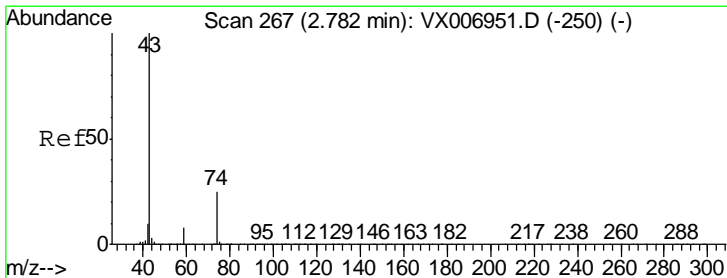
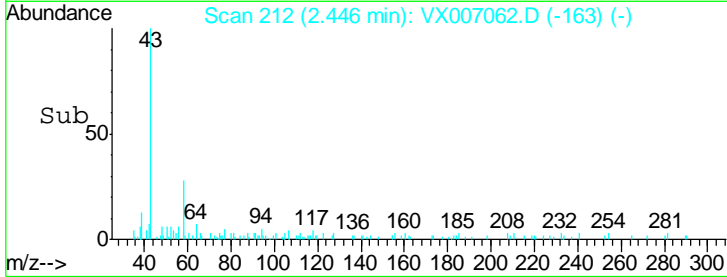
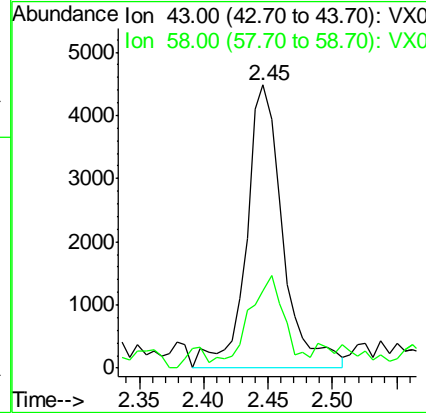
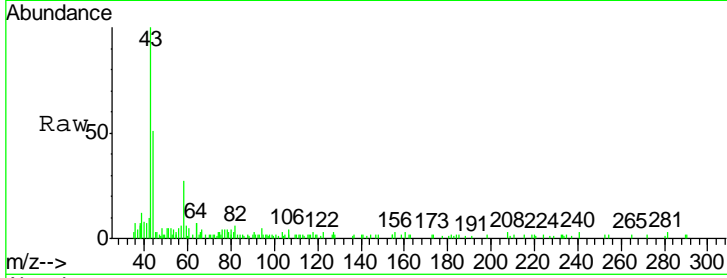




#16
 Acetone
 Concen: 3.039 ug/l
 RT: 2.45 min Scan# 212
 Delta R.T. 0.00 min
 Lab File: VX007062.D
 Acq: 15 Jan 2019 16:53

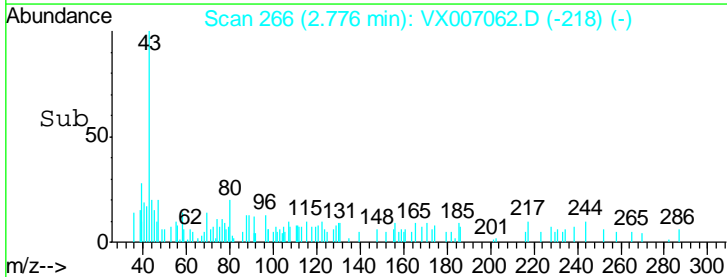
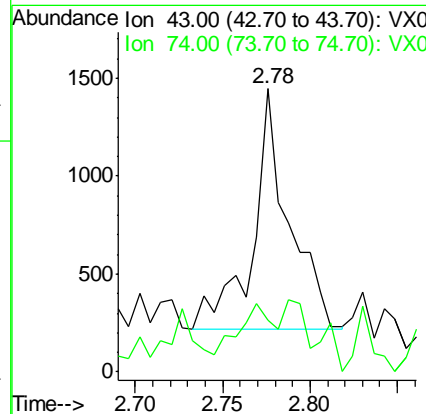
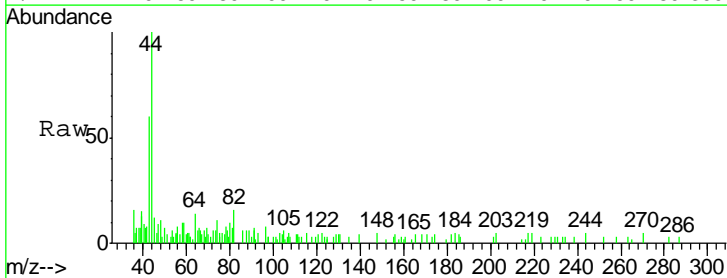
Instrument : MSVOA_X
 ClientSampleId : KY038PS036-190114

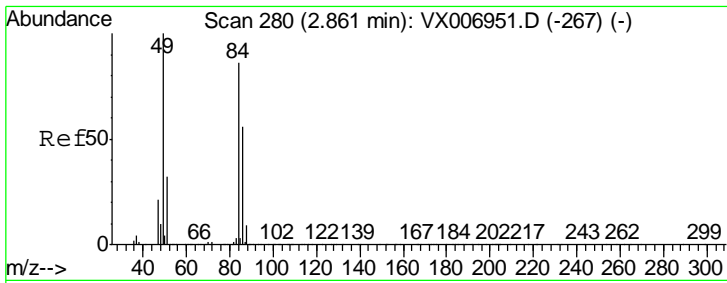
Tgt Ion: 43 Resp: 8732
 Ion Ratio Lower Upper
 43 100
 58 18.9 25.0 37.6#



#18
 Methyl Acetate
 Concen: 0.210 ug/l
 RT: 2.78 min Scan# 266
 Delta R.T. -0.01 min
 Lab File: VX007062.D
 Acq: 15 Jan 2019 16:53

Tgt Ion: 43 Resp: 1751
 Ion Ratio Lower Upper
 43 100
 74 18.9 18.6 28.0

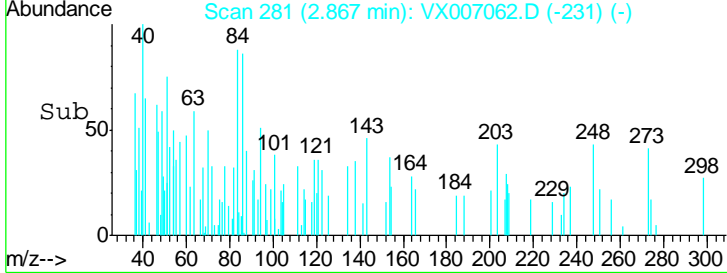
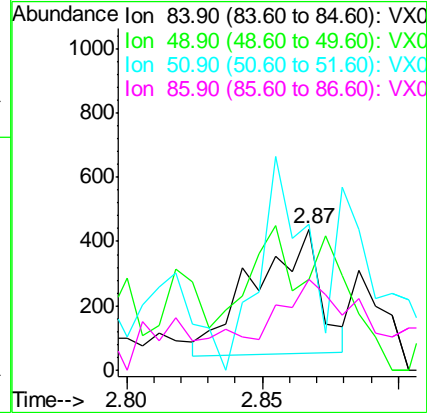
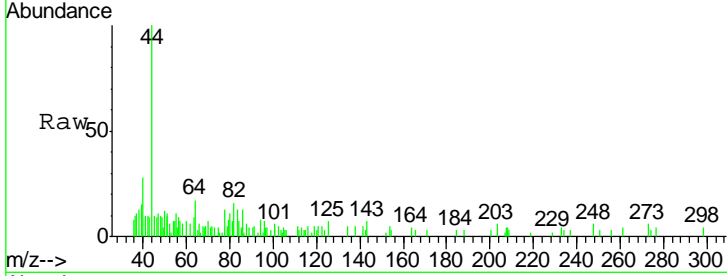




#20
 Methylene Chloride
 Concen: Below Cal
 RT: 2.87 min Scan# 281
 Delta R.T. 0.01 min
 Lab File: VX007062.D
 Acq: 15 Jan 2019 16:53

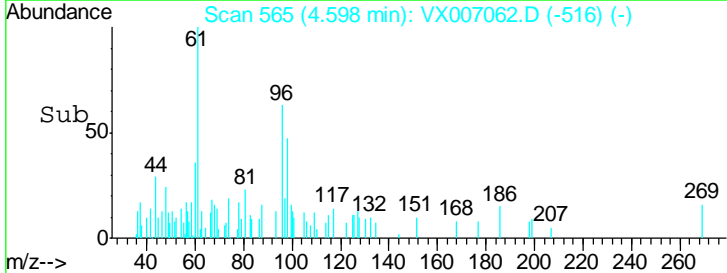
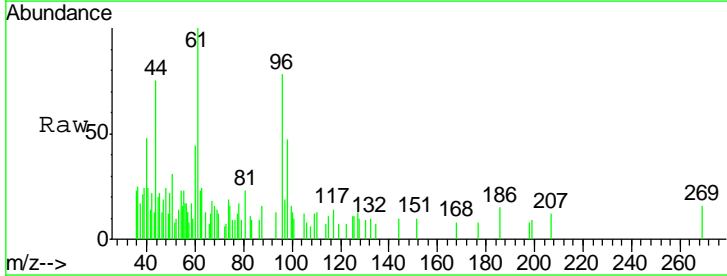
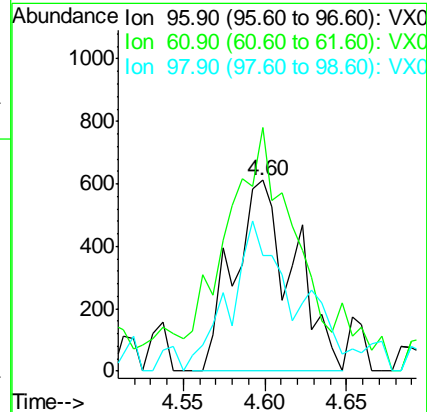
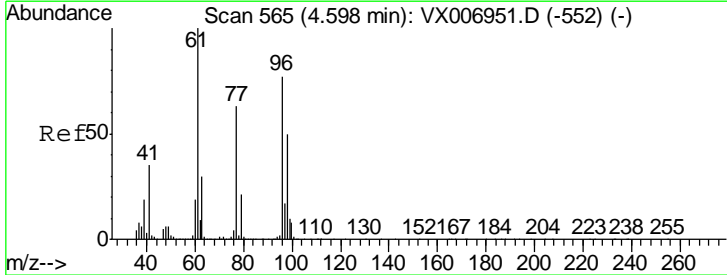
Instrument :
 MSVOA_X
ClientSampleId :
 KY038PS036-190114

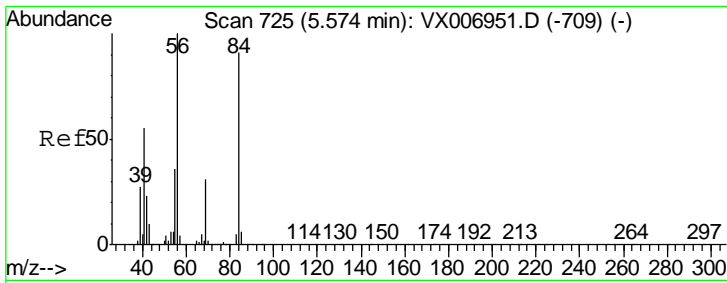
Tgt Ion	Resp	Lower	Upper
84	100		
49	2.3	91.8	137.6#
51	87.8	28.5	42.7#
86	53.8	50.2	75.2



#27
 cis-1,2-Dichloroethene
 Concen: 0.249 ug/l
 RT: 4.60 min Scan# 565
 Delta R.T. 0.00 min
 Lab File: VX007062.D
 Acq: 15 Jan 2019 16:53

Tgt Ion	Resp	Lower	Upper
96	100		
61	111.1	0.0	258.6
98	63.6	0.0	132.0

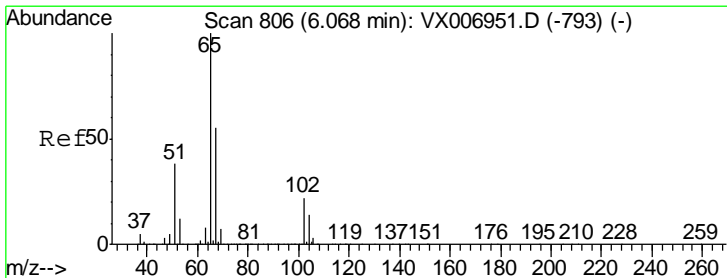
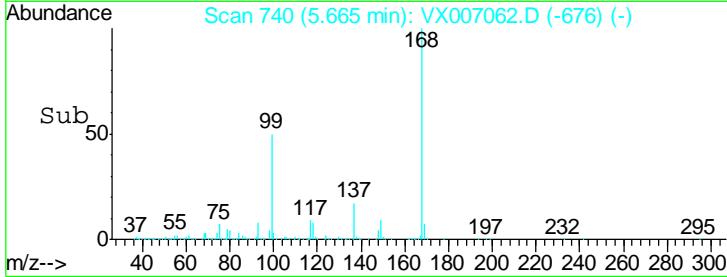
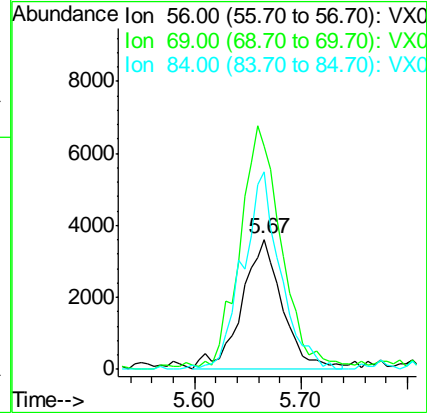
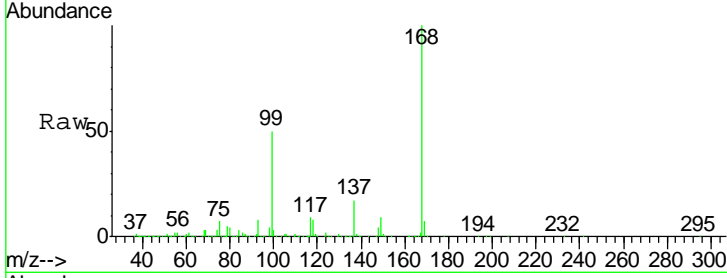




#31
 Cyclohexane
 Concen: 1.180 ug/l
 RT: 5.67 min Scan# 740
 Delta R.T. 0.09 min
 Lab File: VX007062.D
 Acq: 15 Jan 2019 16:53

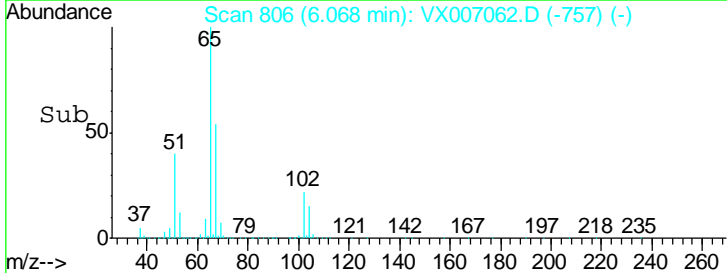
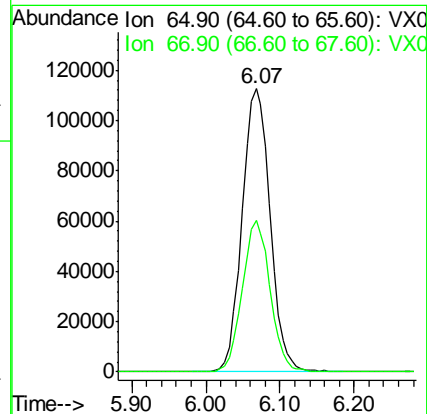
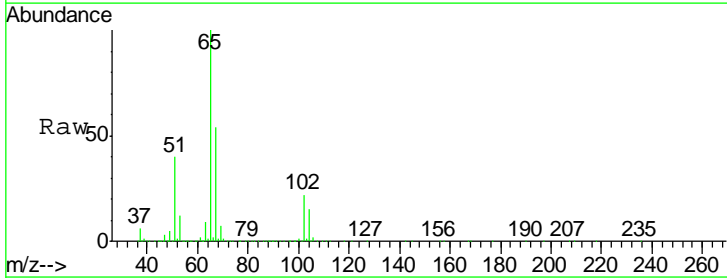
Instrument :
 MSVOA_X
 ClientSampled :
 KY038PS036-190114

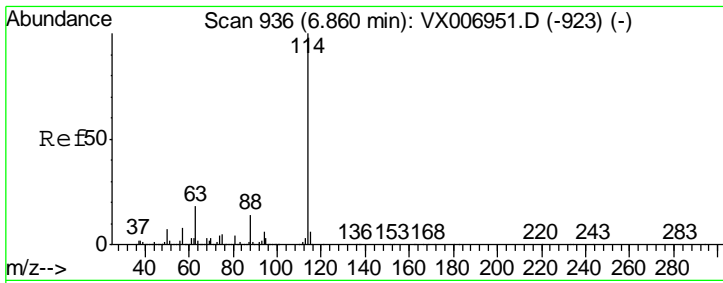
Tgt Ion	Resp	Lower	Upper
56	100		
69	168.0	24.4	36.6#
84	151.1	70.0	105.0#



#33
 1,2-Dichloroethane-d4
 Concen: 51.158 ug/l
 RT: 6.07 min Scan# 806
 Delta R.T. 0.00 min
 Lab File: VX007062.D
 Acq: 15 Jan 2019 16:53

Tgt Ion	Resp	Lower	Upper
65	100		
67	53.0	0.0	105.0

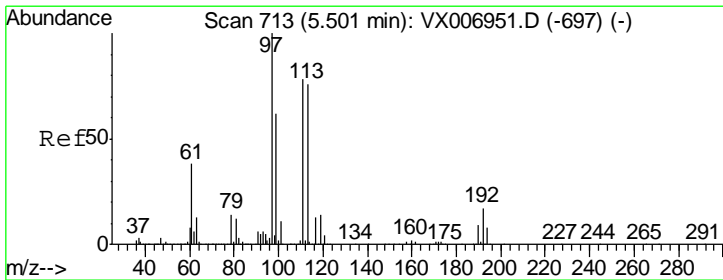
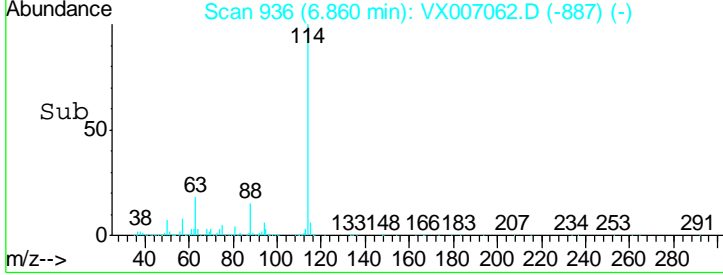
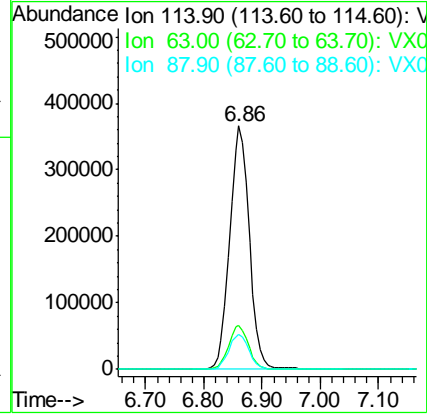
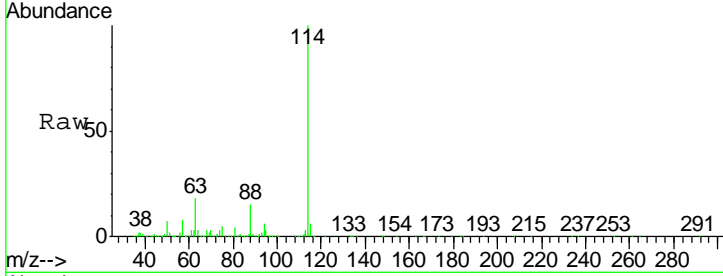




#34
 1,4-Difluorobenzene
 Concen: 50.000 ug/l
 RT: 6.86 min Scan# 936
 Delta R.T. 0.00 min
 Lab File: VX007062.D
 Acq: 15 Jan 2019 16:53

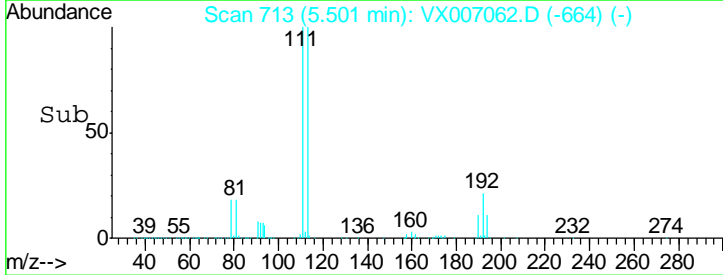
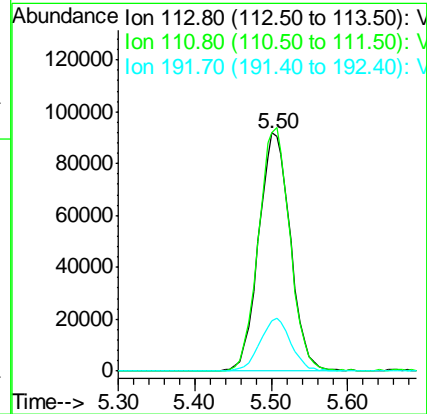
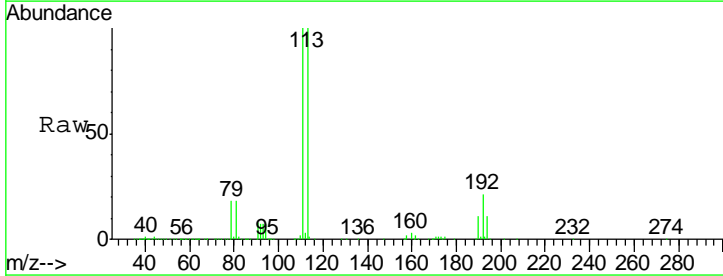
Instrument :
 MSVOA_X
 ClientSampleID :
 KY038PS036-190114

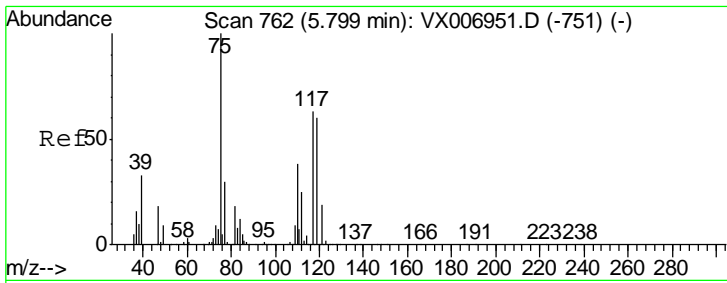
Tgt Ion	Resp	Lower	Upper
114	861155		
63	18.2	0.0	34.8
88	14.6	0.0	28.8



#35
 Dibromofluoromethane
 Concen: 47.857 ug/l
 RT: 5.50 min Scan# 713
 Delta R.T. 0.00 min
 Lab File: VX007062.D
 Acq: 15 Jan 2019 16:53

Tgt Ion	Resp	Lower	Upper
113	263920		
111	101.7	81.6	122.4
192	21.7	16.7	25.1

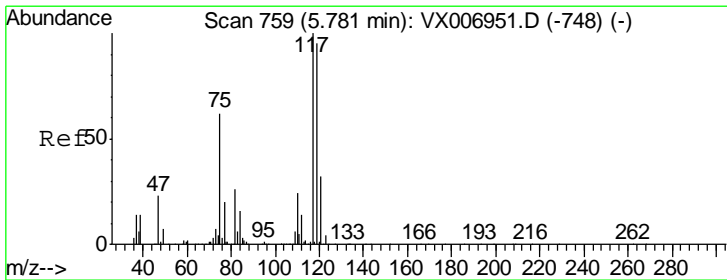
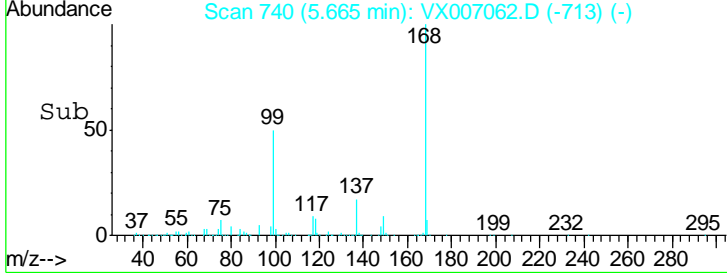
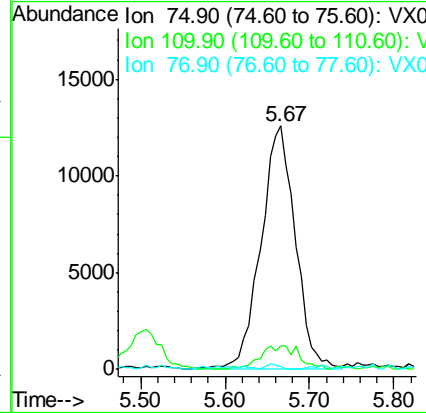
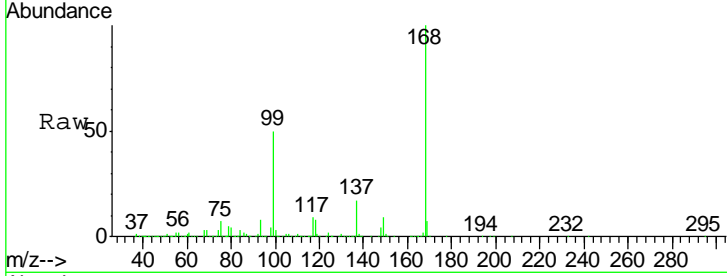




#36
 1,1-Dichloropropene
 Concen: 4.737 ug/l
 RT: 5.67 min Scan# 740
 Delta R.T. -0.13 min
 Lab File: VX007062.D
 Acq: 15 Jan 2019 16:53

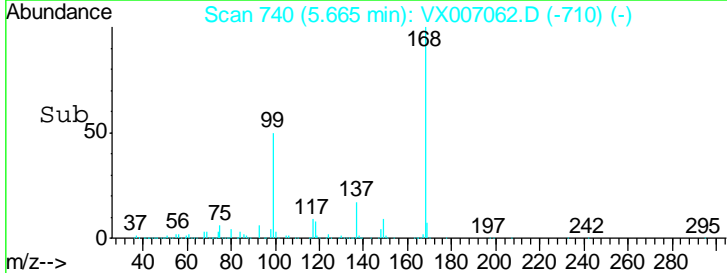
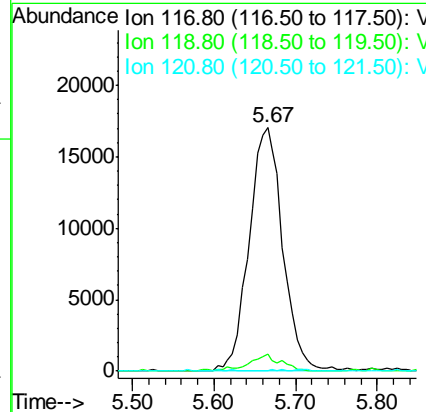
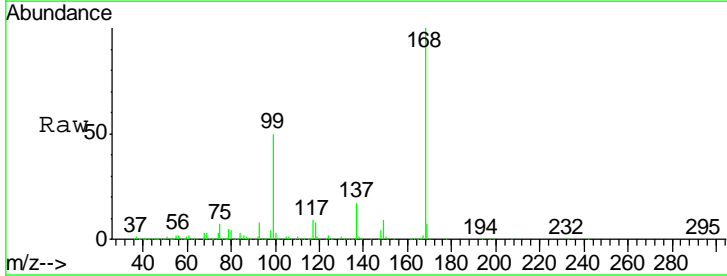
Instrument :
 MSVOA_X
ClientSampled :
 KY038PS036-190114

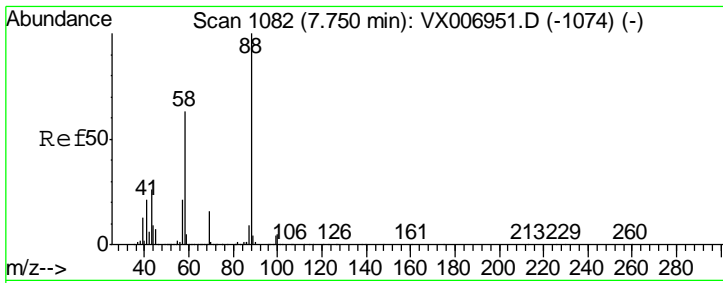
Tgt Ion	Resp	Lower	Upper
75	100		
110	5.0	20.2	60.5#
77	0.9	24.8	37.2#



#38
 Carbon Tetrachloride
 Concen: 6.478 ug/l
 RT: 5.67 min Scan# 740
 Delta R.T. -0.12 min
 Lab File: VX007062.D
 Acq: 15 Jan 2019 16:53

Tgt Ion	Resp	Lower	Upper
117	100		
119	6.8	79.4	119.2#
121	0.0	24.0	36.0#

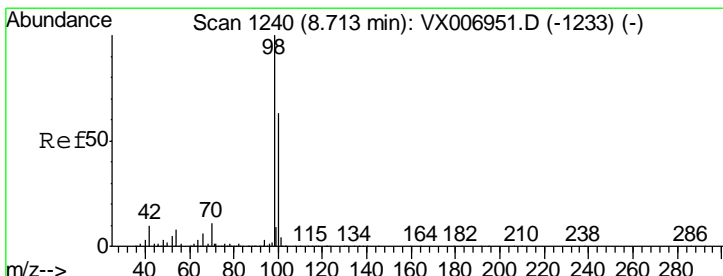
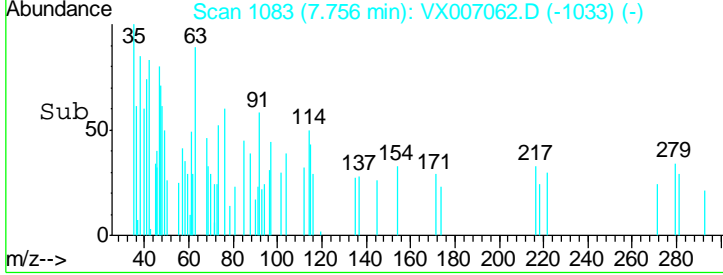
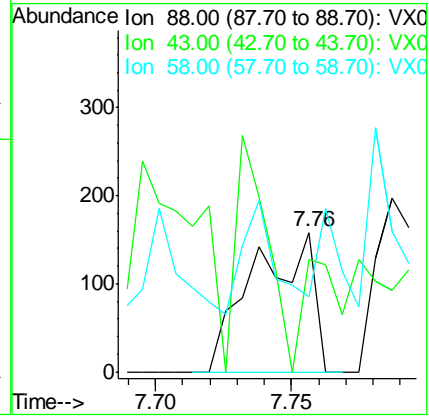
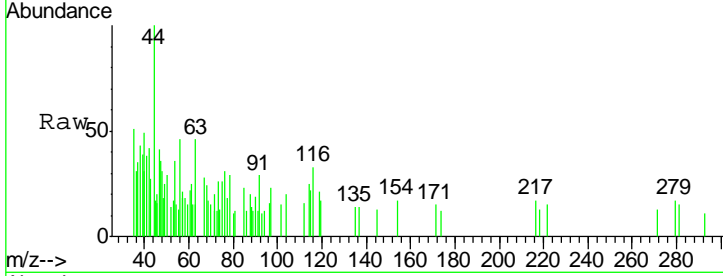




#49
 1,4-Dioxane
 Concen: Below Cal
 RT: 7.76 min Scan# 1083
 Delta R.T. 0.01 min
 Lab File: VX007062.D
 Acq: 15 Jan 2019 16:53

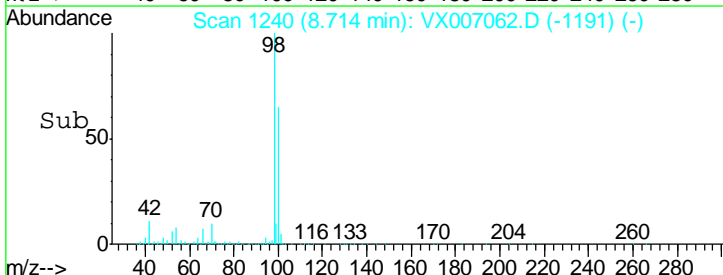
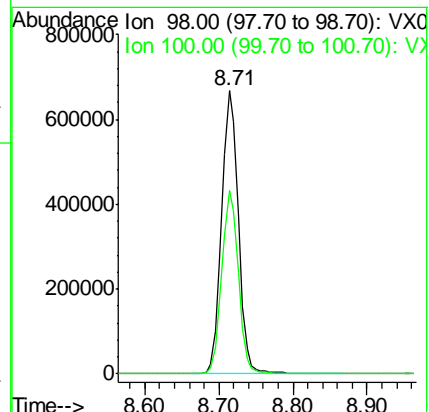
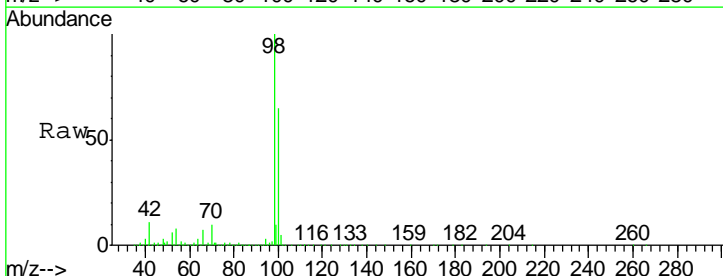
Instrument : MSVOA_X
 ClientSampled : KY038PS036-190114

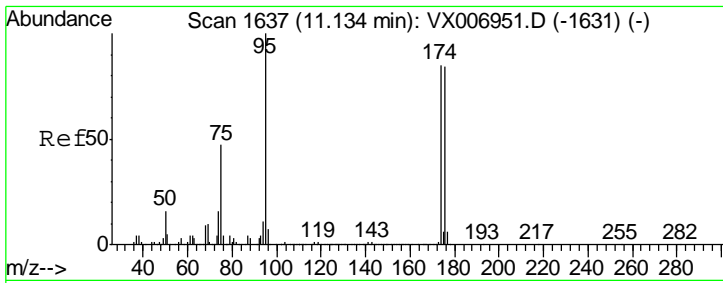
Tgt Ion	Resp	Lower	Upper
88	242		
43	47.5	22.2	33.4#
58	40.1	51.0	76.4#



#50
 Toluene-d8
 Concen: 51.318 ug/l
 RT: 8.71 min Scan# 1240
 Delta R.T. 0.00 min
 Lab File: VX007062.D
 Acq: 15 Jan 2019 16:53

Tgt Ion	Resp	Lower	Upper
98	1035900		
100	64.3	52.0	78.0

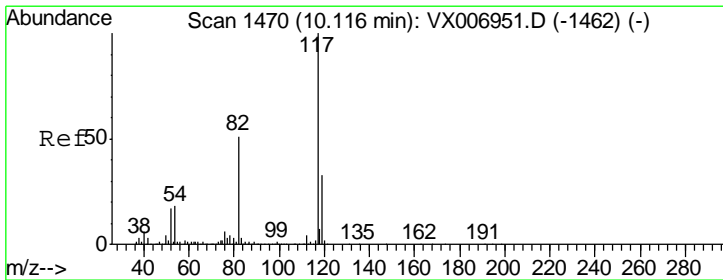
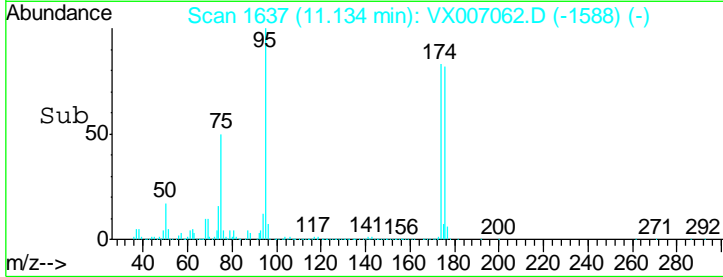
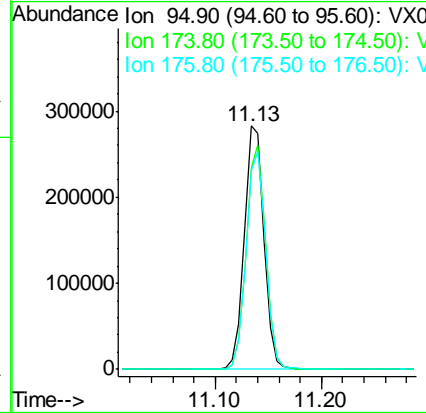
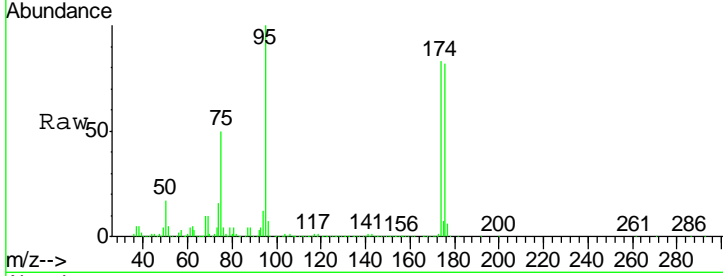




#62
 4-Bromofluorobenzene
 Concen: 52.288 ug/l
 RT: 11.13 min Scan# 1637
 Delta R.T. 0.00 min
 Lab File: VX007062.D
 Acq: 15 Jan 2019 16:53

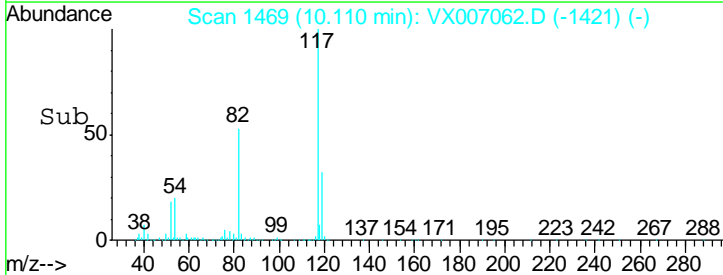
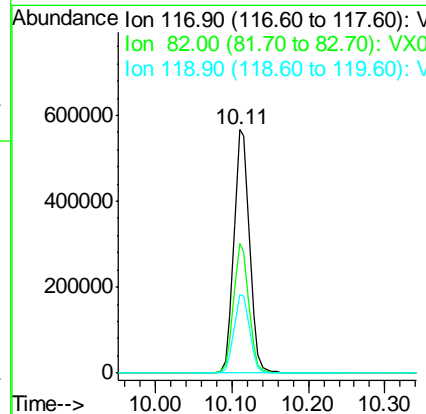
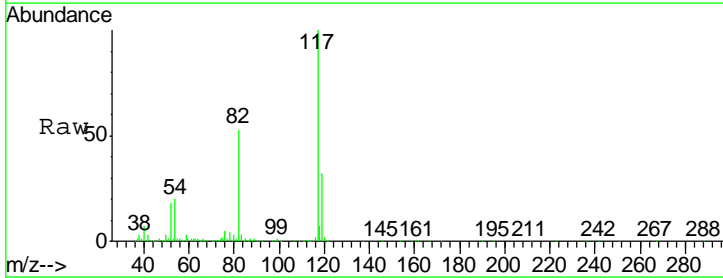
Instrument :
 MSVOA_X
 ClientSampled :
 KY038PS036-190114

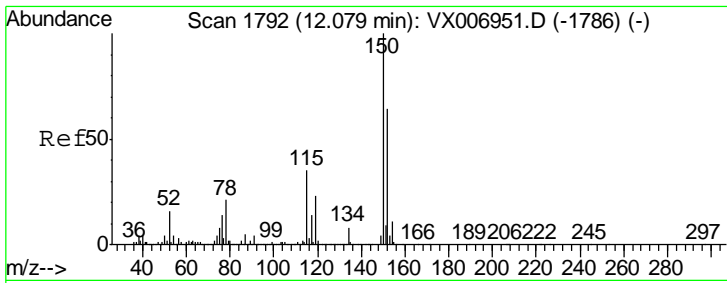
Tgt Ion	Resp	Lower	Upper
95	367964		
174	90.8	0.0	182.2
176	89.3	0.0	178.8



#63
 Chlorobenzene-d5
 Concen: 50.000 ug/l
 RT: 10.11 min Scan# 1469
 Delta R.T. -0.01 min
 Lab File: VX007062.D
 Acq: 15 Jan 2019 16:53

Tgt Ion	Resp	Lower	Upper
117	799334		
82	53.0	41.0	61.6
119	32.0	25.4	38.0

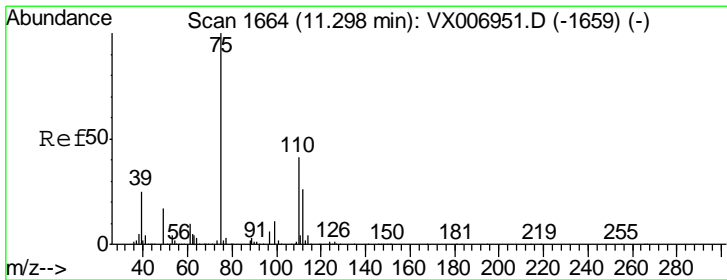
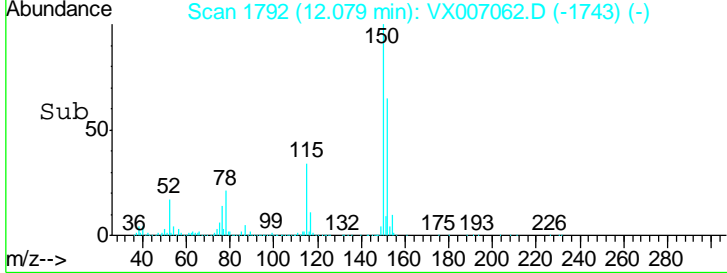
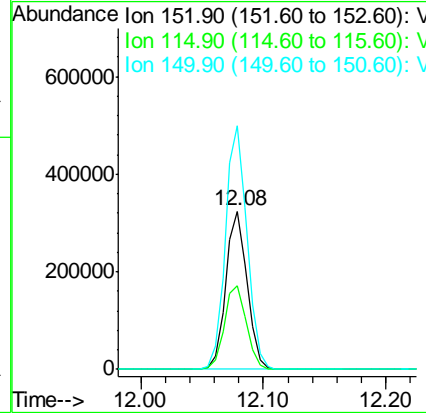
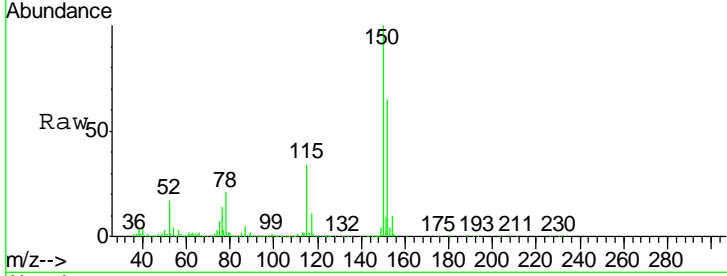




#72
 1,4-Dichlorobenzene-d4
 Concen: 50.000 ug/l
 RT: 12.08 min Scan# 1792
 Delta R.T. 0.00 min
 Lab File: VX007062.D
 Acq: 15 Jan 2019 16:53

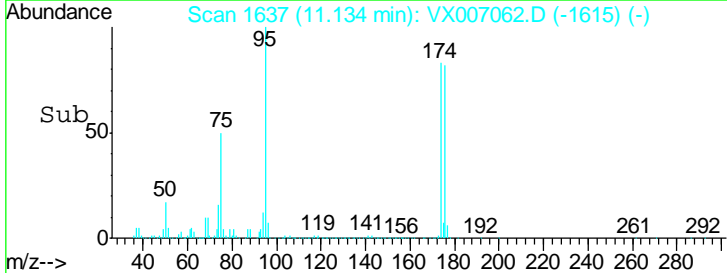
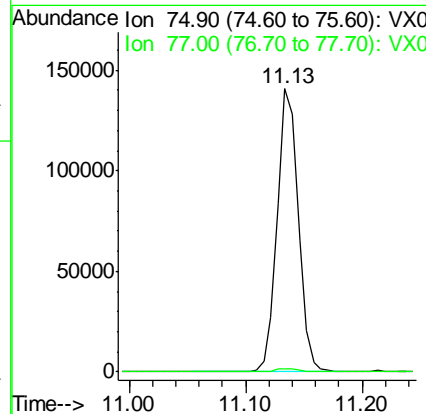
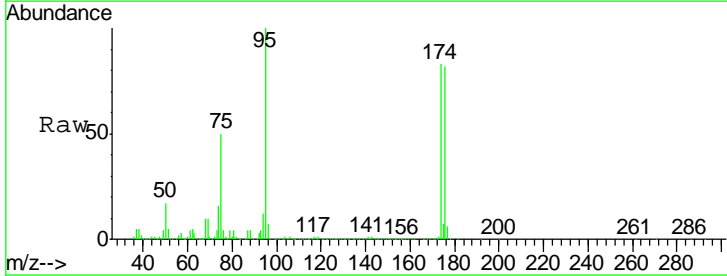
Instrument :
 MSVOA_X
 ClientSampled :
 KY038PS036-190114

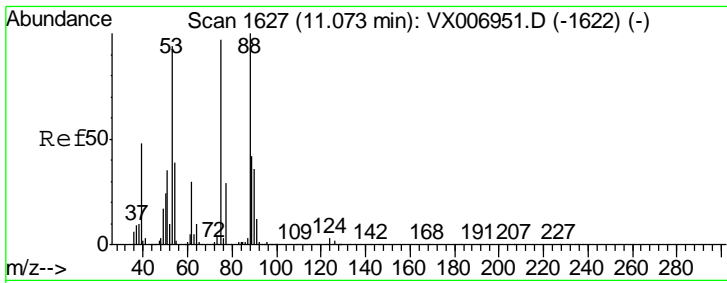
Tgt Ion	Resp	Lower	Upper
152	392585		
115	54.5	39.1	117.2
150	155.8	0.0	344.8



#76
 1,2,3-Trichloropropane
 Concen: 22.067 ug/l
 RT: 11.13 min Scan# 1637
 Delta R.T. -0.16 min
 Lab File: VX007062.D
 Acq: 15 Jan 2019 16:53

Tgt Ion	Resp	Lower	Upper
75	175559		
77	1.4	18.5	55.5#

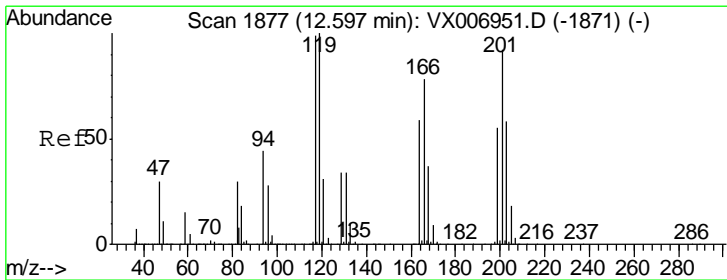
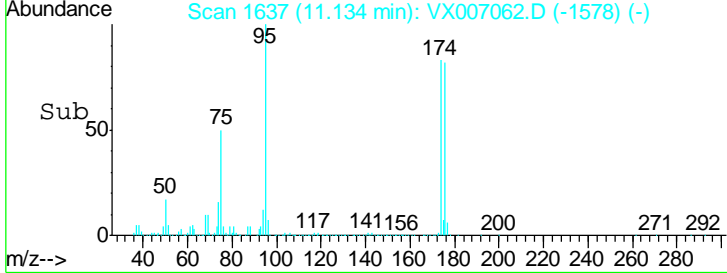
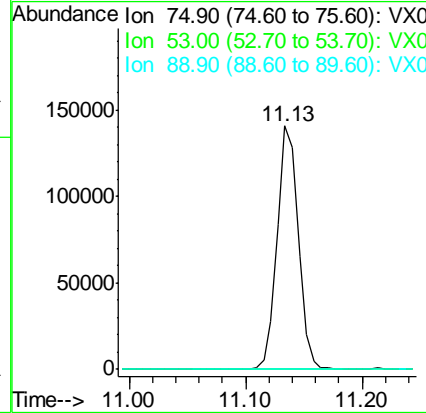
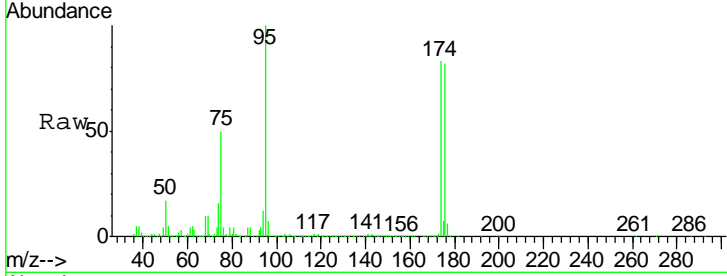




#81
 trans-1,4-Dichloro-2-butene
 Concen: 65.341 ug/l
 RT: 11.13 min Scan# 1637
 Delta R.T. 0.06 min
 Lab File: VX007062.D
 Acq: 15 Jan 2019 16:53

Instrument :
 MSVOA_X
 ClientSampled :
 KY038PS036-190114

Tgt Ion	Resp	Lower	Upper
75	100		
53	0.2	79.7	119.5#
89	0.0	38.0	57.0#



#90
 Hexachloroethane
 Concen: 2.919 ug/l
 RT: 12.59 min Scan# 1876
 Delta R.T. -0.01 min
 Lab File: VX007062.D
 Acq: 15 Jan 2019 16:53

Tgt Ion	Resp	Lower	Upper
117	100		
201	102.2	42.9	128.7

