

Data Path : Z:\voasrv\HPCHEM1\MSVOA_X\Data\VX011521\
 Data File : VX020639.D
 Acq On : 15 Jan 2021 18:32
 Operator : JC/MD
 Sample : M1158-04
 Misc : 5.0mL/MSVOA_X/WATER
 ALS Vial : 13 Sample Multiplier: 1

Instrument :
 MSVOA_X
 ClientSampleId :
 STORAGE-BLANK-SAMPLE-MANA

Quant Time: Jan 16 00:57:29 2021
 Quant Method : Z:\VOASRV\HPCHEM1\MSVOA_X\METHOD\82X011121W.M
 Quant Title : SW846 8260
 QLast Update : Mon Jan 11 15:05:37 2021
 Response via : Initial Calibration

Compound	R.T.	QIon	Response	Conc	Units	Dev(Min)

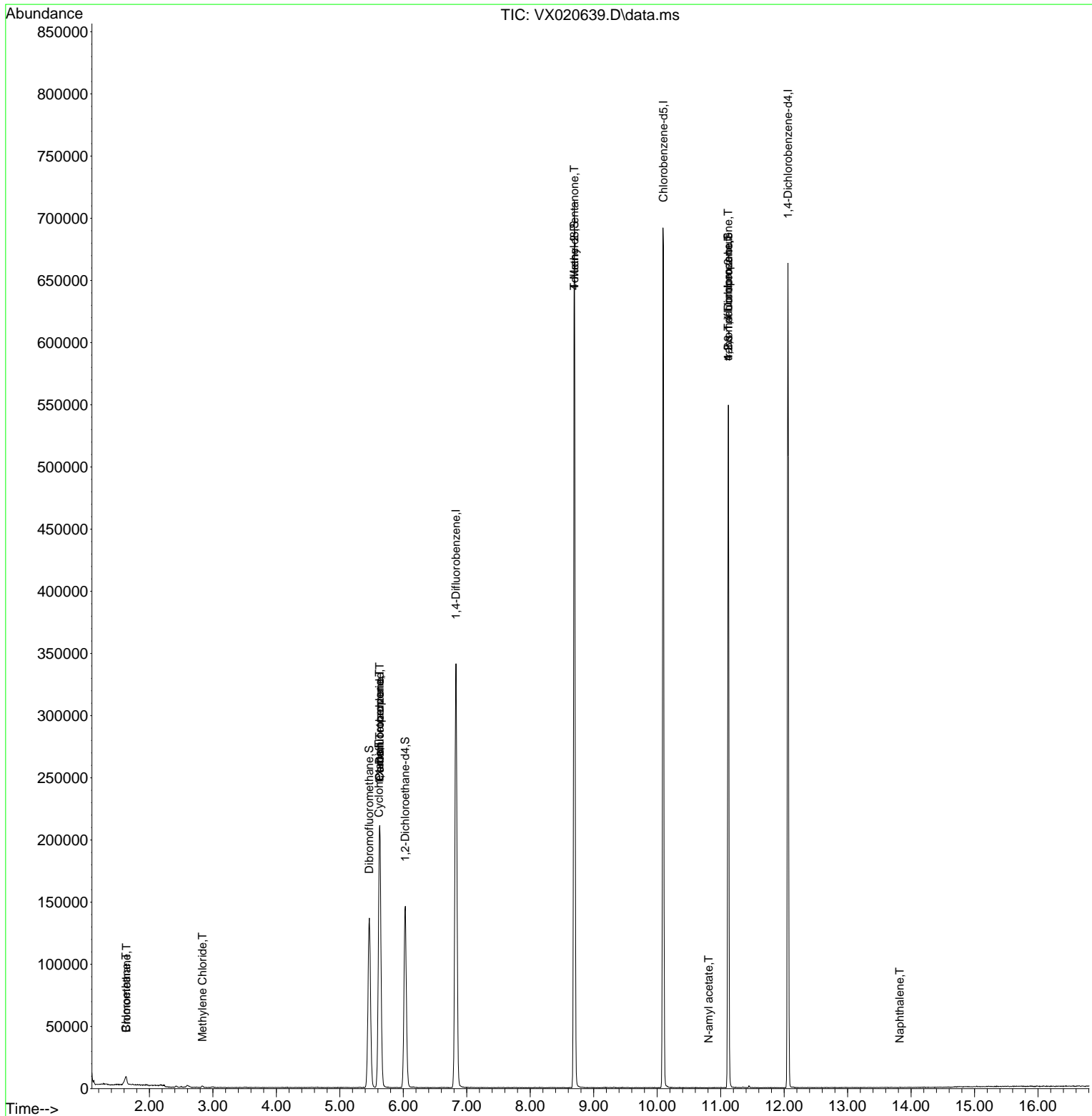
Internal Standards						
1) Pentafluorobenzene	5.629	168	195317	50.00	ug/l	0.00
34) 1,4-Difluorobenzene	6.830	114	346801	50.00	ug/l	0.00
63) Chlorobenzene-d5	10.098	117	325378	50.00	ug/l	0.00
72) 1,4-Dichlorobenzene-d4	12.061	152	139469	50.00	ug/l	0.00
System Monitoring Compounds						
33) 1,2-Dichloroethane-d4	6.031	65	138659	59.10	ug/l	0.00
Spiked Amount	50.000	Range 61 - 141	Recovery =	118.20%		
35) Dibromofluoromethane	5.464	113	118337	49.25	ug/l	0.00
Spiked Amount	50.000	Range 69 - 133	Recovery =	98.50%		
50) Toluene-d8	8.695	98	414873	48.25	ug/l	0.00
Spiked Amount	50.000	Range 65 - 126	Recovery =	96.50%		
62) 4-Bromofluorobenzene	11.122	95	143321	47.20	ug/l	0.00
Spiked Amount	50.000	Range 58 - 135	Recovery =	94.40%		
Target Compounds						
						Qvalue
5) Bromomethane	1.636	94	526	0.38	ug/l #	62
6) Chloroethane	1.630	64	78	0.48	ug/l #	1
11) Tert butyl alcohol	3.007	59	369	Below Cal	#	73
16) Acetone	2.416	43	1027	Below Cal		99
20) Methylene Chloride	2.837	84	563	0.25	ug/l #	85
31) Cyclohexane	5.617	56	4013	1.46	ug/l #	13
36) 1,1-Dichloropropene	5.623	75	15997	5.05	ug/l #	49
38) Carbon Tetrachloride	5.629	117	20937	5.66	ug/l #	16
51) 4-Methyl-2-Pentanone	8.695	43	1845	0.67	ug/l #	1
74) N-amyl acetate	10.811	43	29	1.24	ug/l #	38
76) 1,2,3-Trichloropropane	11.122	75	73672	25.07	ug/l #	39
81) trans-1,4-Dichloro-2-b...	11.122	75	73672	68.32	ug/l #	12
95) Naphthalene	13.823	128	166	3.86	ug/l #	69

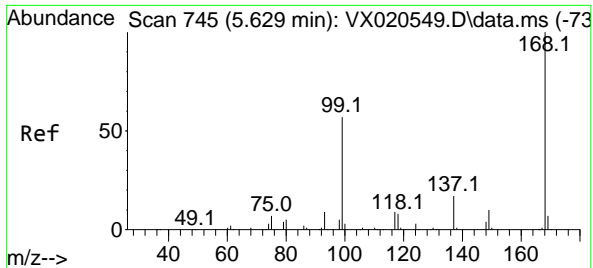
(#) = qualifier out of range (m) = manual integration (+) = signals summed

Data Path : Z:\voasrv\HPCHEM1\MSVOA_X\Data\VX011521\
 Data File : VX020639.D
 Acq On : 15 Jan 2021 18:32
 Operator : JC/MD
 Sample : M1158-04
 Misc : 5.0mL/MSVOA_X/WATER
 ALS Vial : 13 Sample Multiplier: 1

Instrument :
 MSVOA_X
 Client Sampled :
 STORAGE-BLANK-SAMPLE-MANA

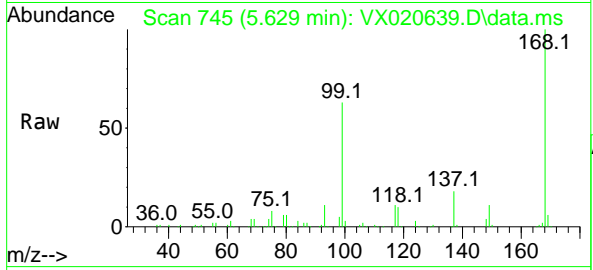
Quant Time: Jan 16 00:57:29 2021
 Quant Method : Z:\VOASRV\HPCHEM1\MSVOA_X\METHOD\82X011121W.M
 Quant Title : SW846 8260
 QLast Update : Mon Jan 11 15:05:37 2021
 Response via : Initial Calibration



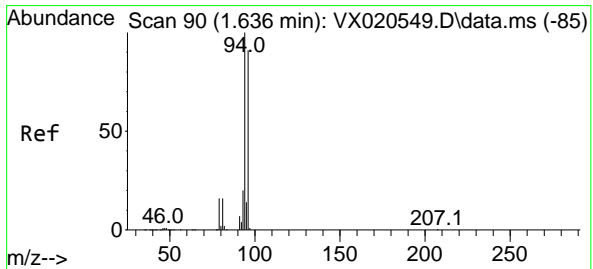
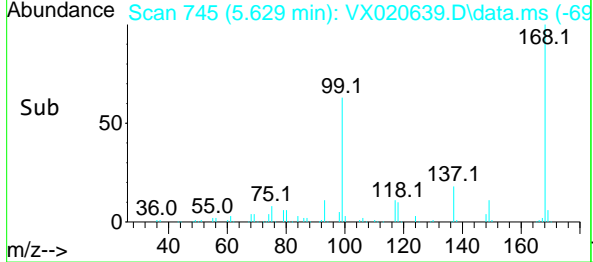
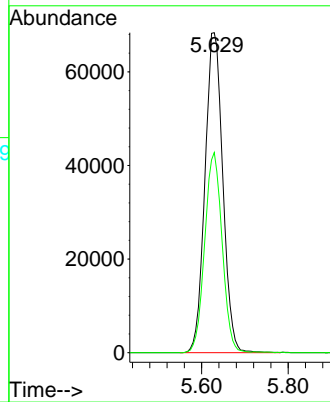


#1
 Pentafluorobenzene
 Concen: 50.00 ug/l
 RT: 5.629 min Scan# 745
 Delta R.T. -0.000 min
 Lab File: VX020639.D
 Acq: 15 Jan 2021 18:32

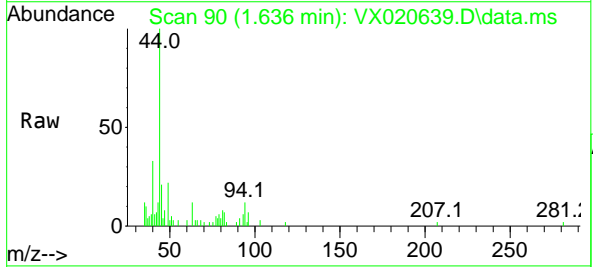
Instrument :
 MSVOA_X
 ClientSampleId :
 STORAGE-BLANK-SAMPLE-MANA



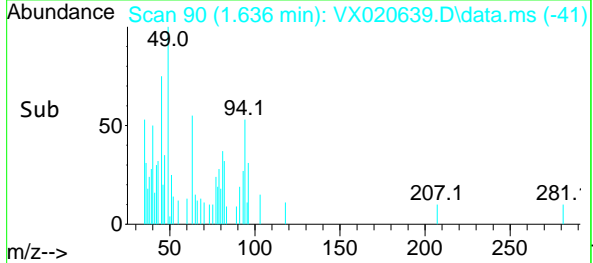
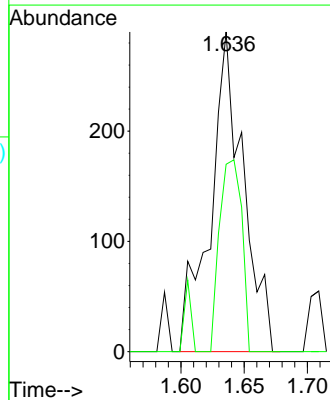
Tgt Ion:168 Resp: 195317
 Ion Ratio Lower Upper
 168 100
 99 62.6 45.8 68.6

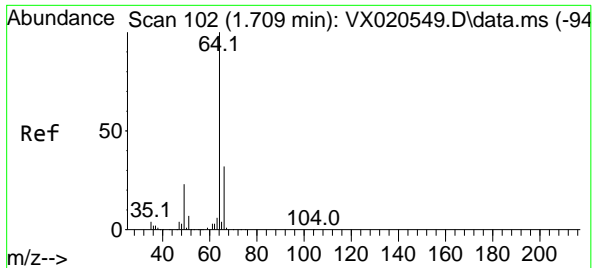


#5
 Bromomethane
 Concen: 0.38 ug/l
 RT: 1.636 min Scan# 90
 Delta R.T. -0.000 min
 Lab File: VX020639.D
 Acq: 15 Jan 2021 18:32



Tgt Ion: 94 Resp: 526
 Ion Ratio Lower Upper
 94 100
 96 58.6 76.4 114.6

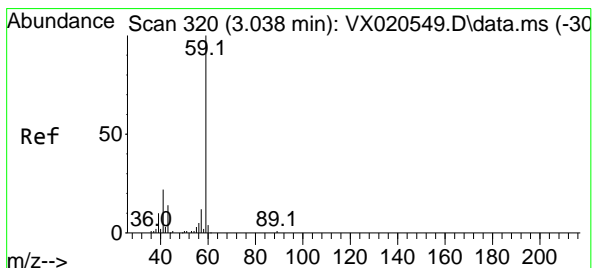
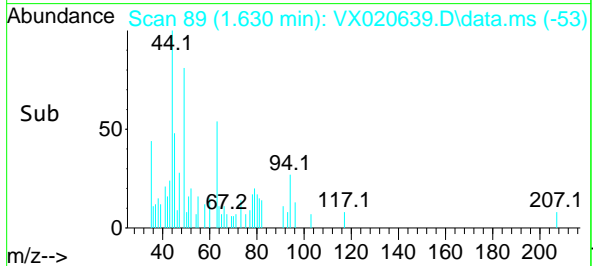
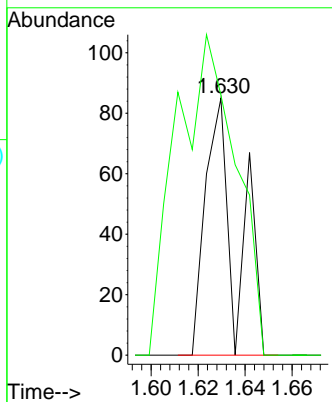
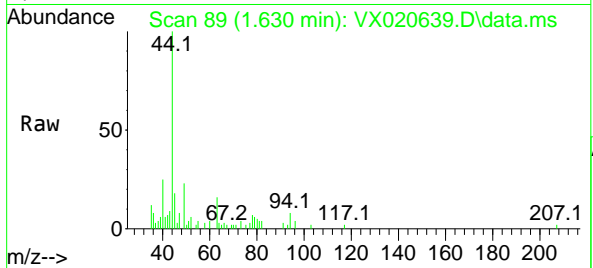




#6
 Chloroethane
 Concen: 0.48 ug/l
 RT: 1.630 min Scan# 89
 Delta R.T. -0.079 min
 Lab File: VX020639.D
 Acq: 15 Jan 2021 18:32

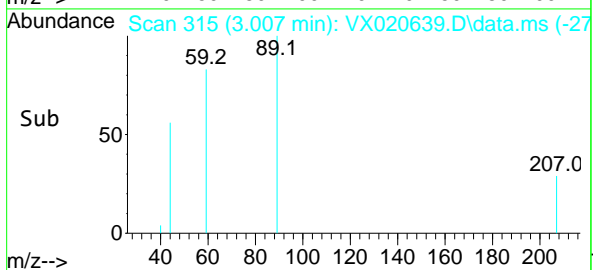
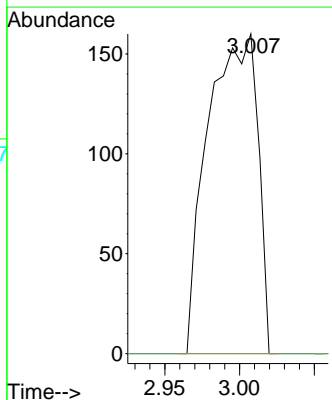
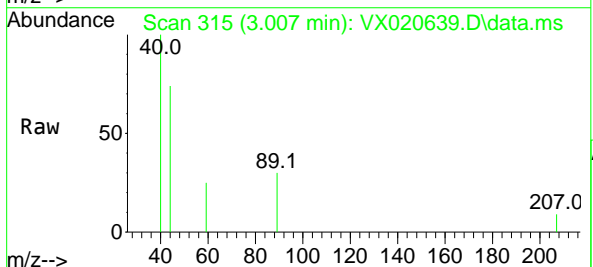
Instrument :
 MSVOA_X
 ClientSampleId :
 STORAGE-BLANK-SAMPLE-MANA

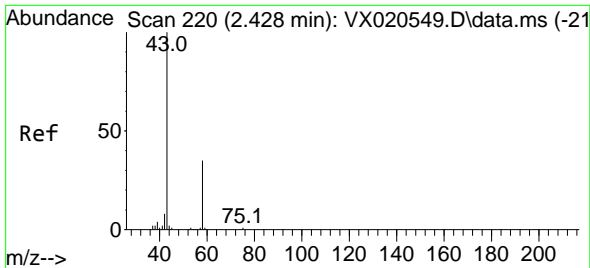
Tgt Ion: 64 Resp: 78
 Ion Ratio Lower Upper
 64 100
 66 101.2 25.4 38.0#



#11
 Tert butyl alcohol
 Concen: Below Cal
 RT: 3.007 min Scan# 315
 Delta R.T. -0.031 min
 Lab File: VX020639.D
 Acq: 15 Jan 2021 18:32

Tgt Ion: 59 Resp: 369
 Ion Ratio Lower Upper
 59 100
 57 0.0 7.8 11.8#

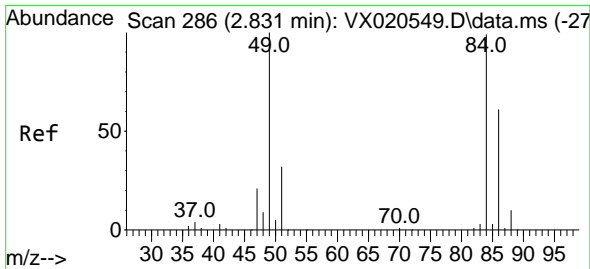
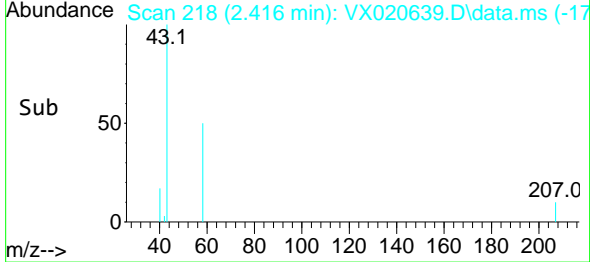
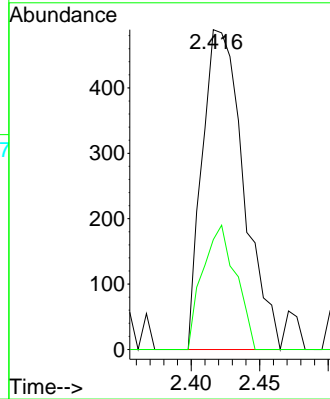
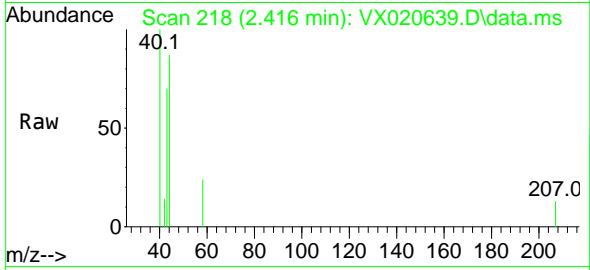




#16
 Acetone
 Concen: Below Cal
 RT: 2.416 min Scan# 218
 Delta R.T. -0.012 min
 Lab File: VX020639.D
 Acq: 15 Jan 2021 18:32

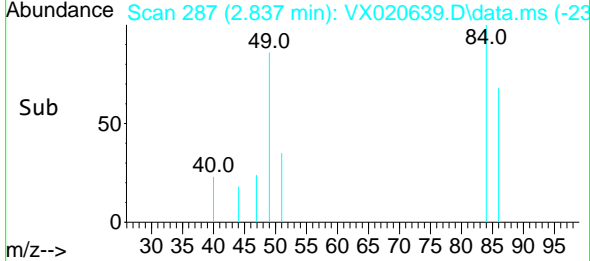
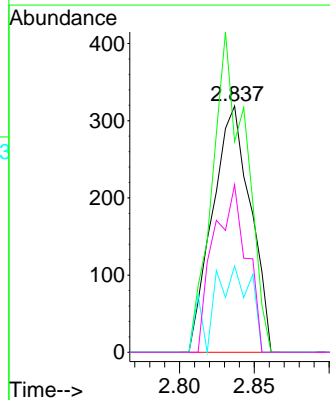
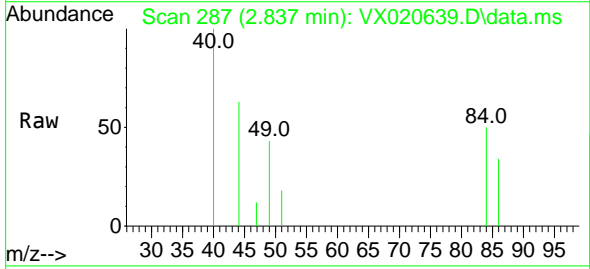
Instrument :
 MSVOA_X
ClientSampleId :
 STORAGE-BLANK-SAMPLE-MANA

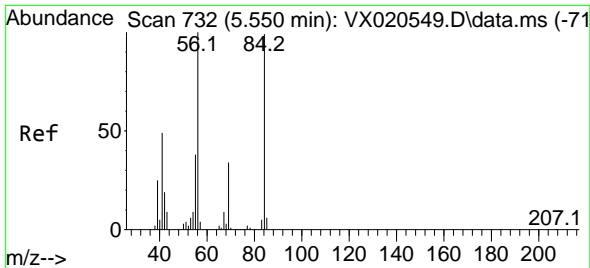
Tgt Ion: 43 Resp: 1027
 Ion Ratio Lower Upper
 43 100
 58 34.4 27.8 41.8



#20
 Methylene Chloride
 Concen: 0.25 ug/l
 RT: 2.837 min Scan# 287
 Delta R.T. 0.006 min
 Lab File: VX020639.D
 Acq: 15 Jan 2021 18:32

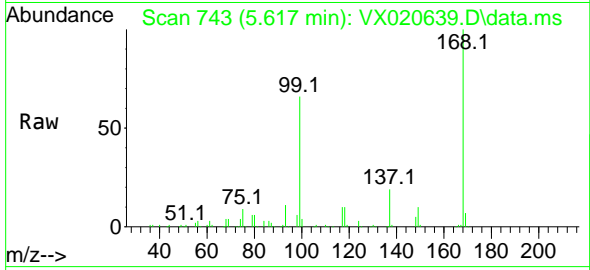
Tgt Ion: 84 Resp: 563
 Ion Ratio Lower Upper
 84 100
 49 85.6 88.6 132.8#
 51 35.1 27.0 40.6
 86 68.0 50.3 75.5



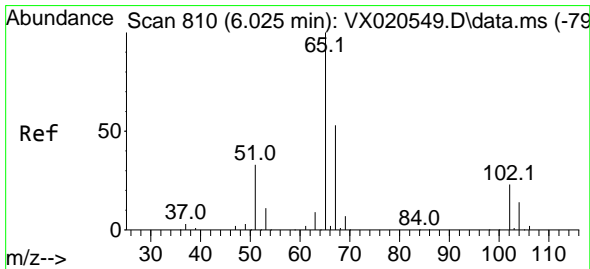
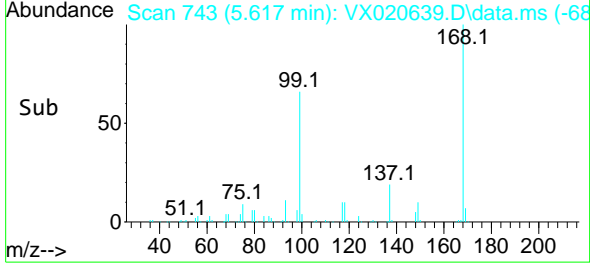
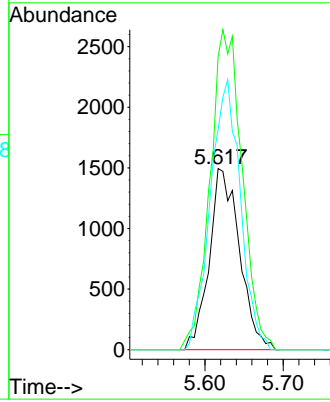


#31
 Cyclohexane
 Concen: 1.46 ug/l
 RT: 5.617 min Scan# 743
 Delta R.T. 0.067 min
 Lab File: VX020639.D
 Acq: 15 Jan 2021 18:32

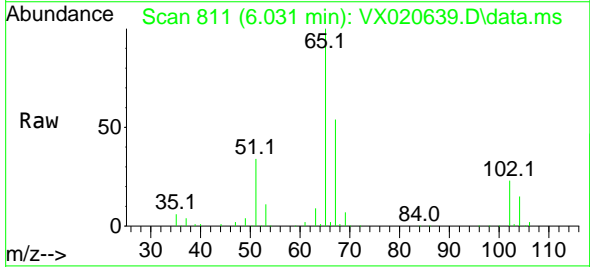
Instrument :
 MSVOA_X
 ClientSampleId :
 STORAGE-BLANK-SAMPLE-MANA



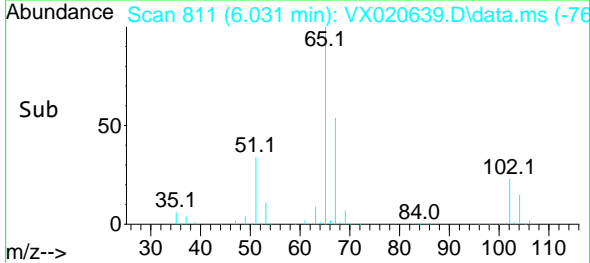
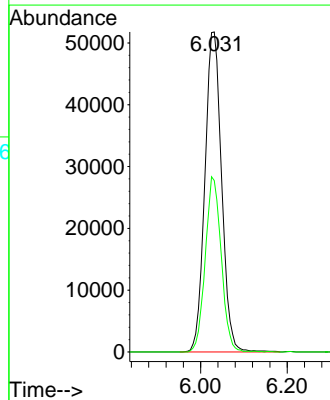
Tgt Ion: 56 Resp: 4013
 Ion Ratio Lower Upper
 56 100
 69 162.0 25.3 37.9#
 84 121.6 71.4 107.0#

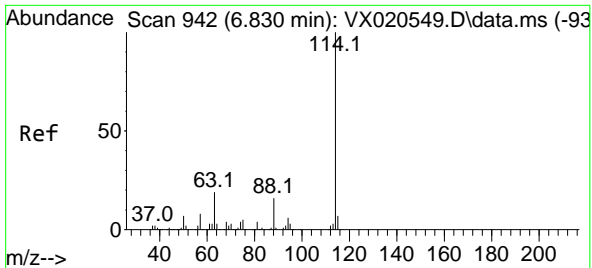


#33
 1,2-Dichloroethane-d4
 Concen: 59.10 ug/l
 RT: 6.031 min Scan# 811
 Delta R.T. 0.006 min
 Lab File: VX020639.D
 Acq: 15 Jan 2021 18:32



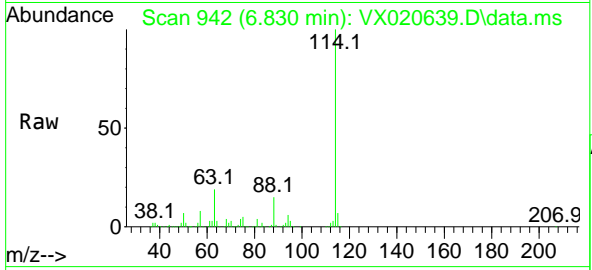
Tgt Ion: 65 Resp: 138659
 Ion Ratio Lower Upper
 65 100
 67 52.2 0.0 105.4





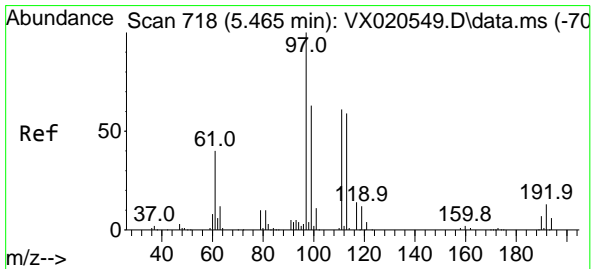
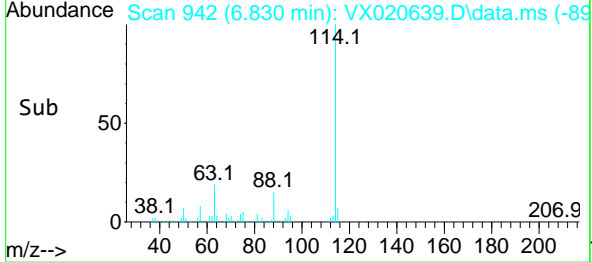
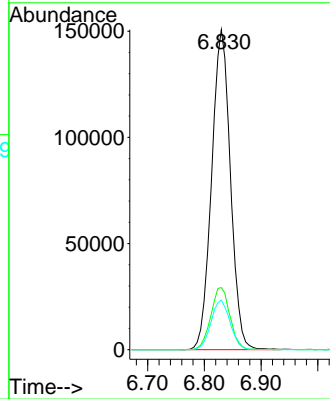
#34
 1,4-Difluorobenzene
 Concen: 50.00 ug/l
 RT: 6.830 min Scan# 942
 Delta R.T. -0.000 min
 Lab File: VX020639.D
 Acq: 15 Jan 2021 18:32

Instrument :
 MSVOA_X
 ClientSampleId :
 STORAGE-BLANK-SAMPLE-MANA

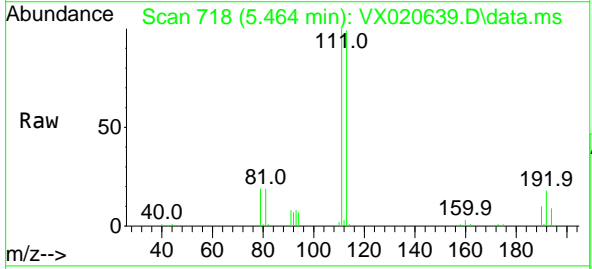


Tgt Ion:114 Resp: 346801

Ion	Ratio	Lower	Upper
114	100		
63	19.4	0.0	40.8
88	15.5	0.0	32.8

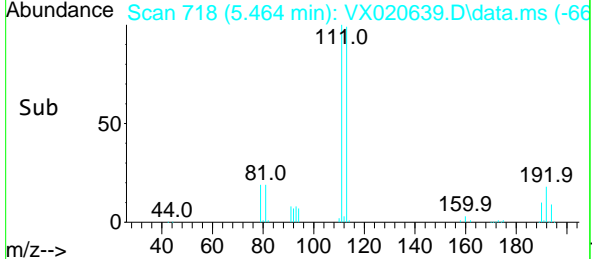
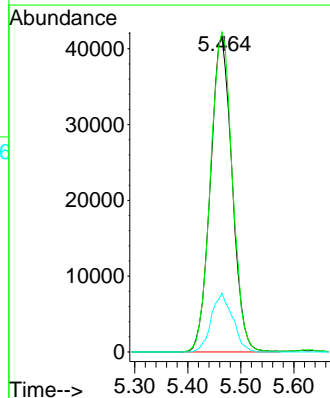


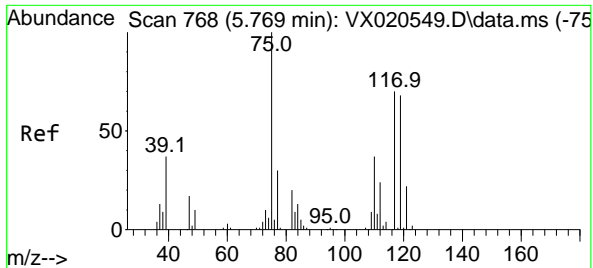
#35
 Dibromofluoromethane
 Concen: 49.25 ug/l
 RT: 5.464 min Scan# 718
 Delta R.T. -0.001 min
 Lab File: VX020639.D
 Acq: 15 Jan 2021 18:32



Tgt Ion:113 Resp: 118337

Ion	Ratio	Lower	Upper
113	100		
111	102.0	81.9	122.9
192	18.3	16.7	25.1

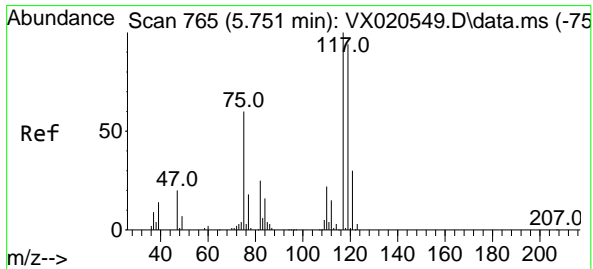
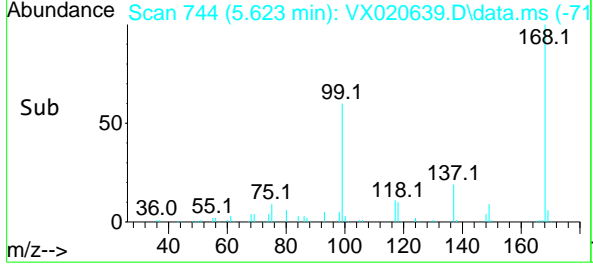
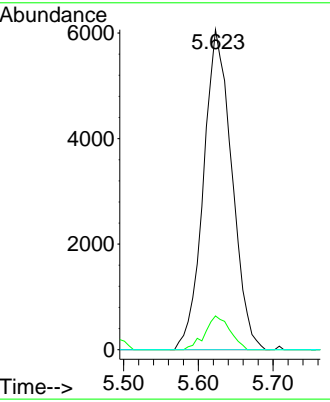
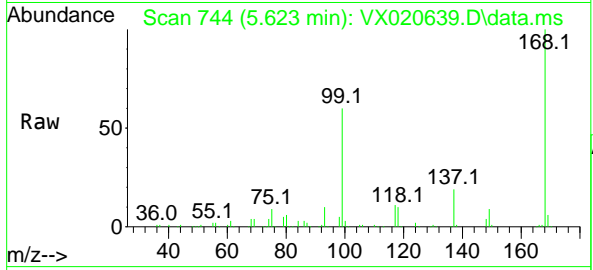




#36
 1,1-Dichloropropene
 Concen: 5.05 ug/l
 RT: 5.623 min Scan# 744
 Delta R.T. -0.146 min
 Lab File: VX020639.D
 Acq: 15 Jan 2021 18:32

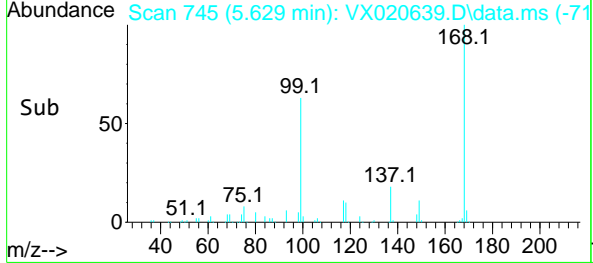
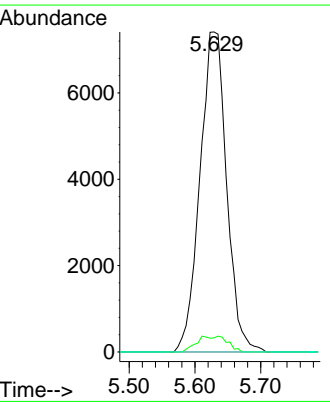
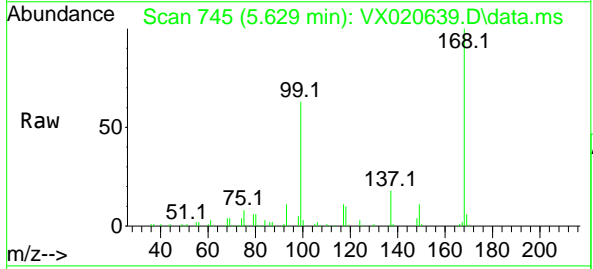
Instrument :
 MSVOA_X
 ClientSampleId :
 STORAGE-BLANK-SAMPLE-MANA

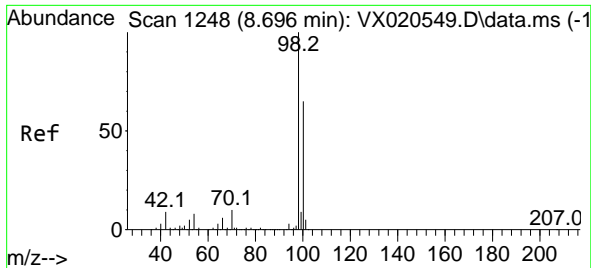
Tgt Ion:	75	Resp:	15997
Ion Ratio	Lower	Upper	
75	100		
110	9.3	18.1	54.4#
77	0.0	25.3	37.9#



#38
 Carbon Tetrachloride
 Concen: 5.66 ug/l
 RT: 5.629 min Scan# 745
 Delta R.T. -0.122 min
 Lab File: VX020639.D
 Acq: 15 Jan 2021 18:32

Tgt Ion:	117	Resp:	20937
Ion Ratio	Lower	Upper	
117	100		
119	4.4	76.2	114.2#
121	0.0	24.8	37.2#

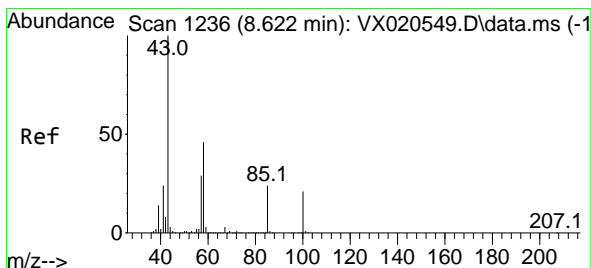
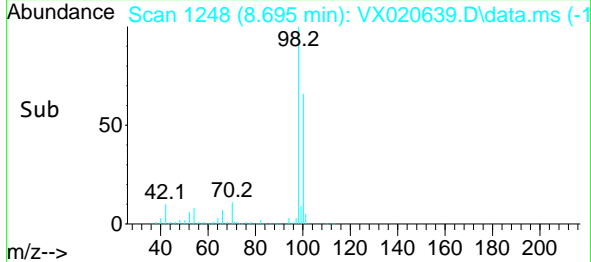
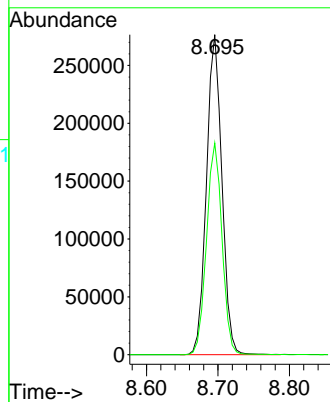
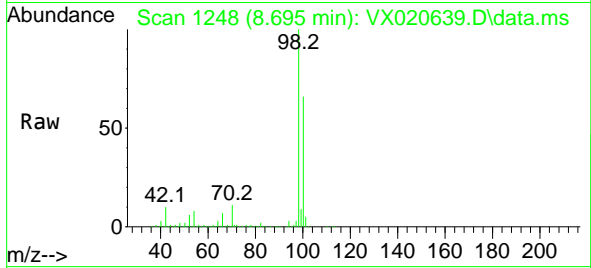




#50
 Toluene-d8
 Concen: 48.25 ug/l
 RT: 8.695 min Scan# 1248
 Delta R.T. -0.001 min
 Lab File: VX020639.D
 Acq: 15 Jan 2021 18:32

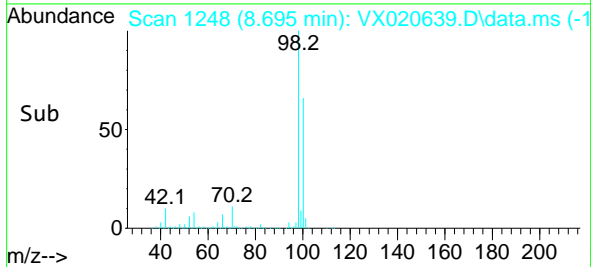
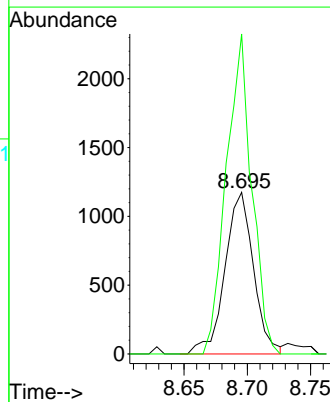
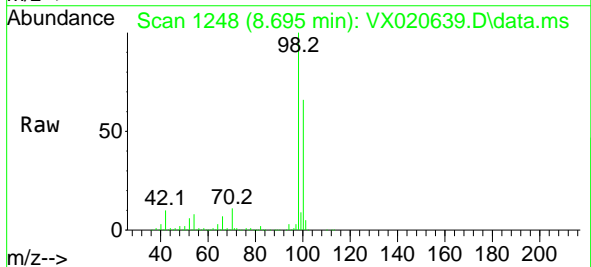
Instrument :
 MSVOA_X
 ClientSampleId :
 STORAGE-BLANK-SAMPLE-MANA

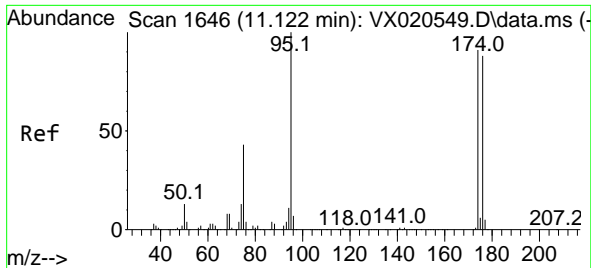
Tgt Ion: 98 Resp: 414873
 Ion Ratio Lower Upper
 98 100
 100 66.5 51.9 77.9



#51
 4-Methyl-2-Pentanone
 Concen: 0.67 ug/l
 RT: 8.695 min Scan# 1248
 Delta R.T. 0.073 min
 Lab File: VX020639.D
 Acq: 15 Jan 2021 18:32

Tgt Ion: 43 Resp: 1845
 Ion Ratio Lower Upper
 43 100
 58 176.3 35.4 53.0#



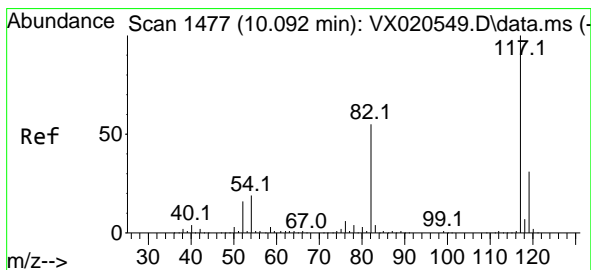
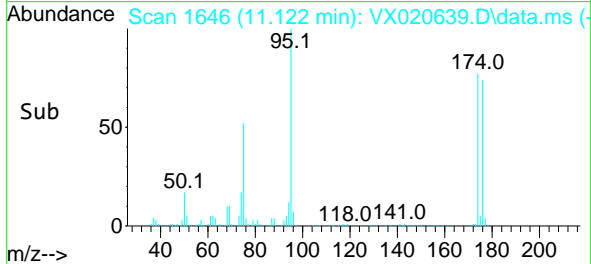
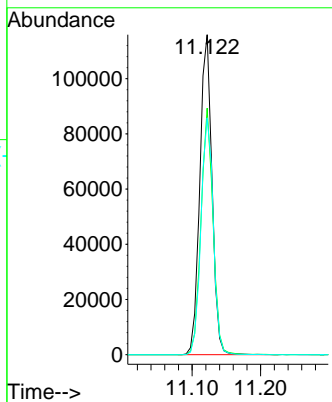
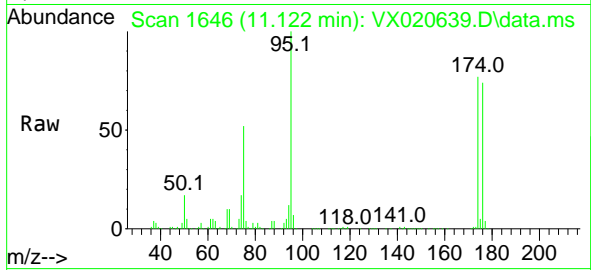


#62
 4-Bromofluorobenzene
 Concen: 47.20 ug/l
 RT: 11.122 min Scan# 1646
 Delta R.T. -0.000 min
 Lab File: VX020639.D
 Acq: 15 Jan 2021 18:32

Instrument :
 MSVOA_X
 ClientSampleId :
 STORAGE-BLANK-SAMPLE-MANA

Tgt Ion: 95 Resp: 143321

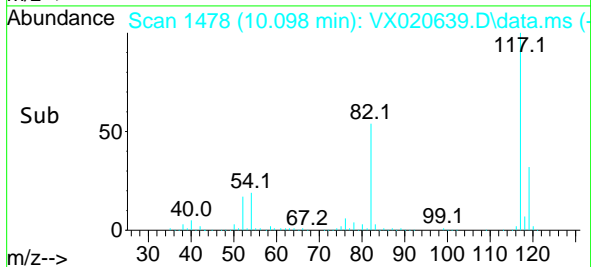
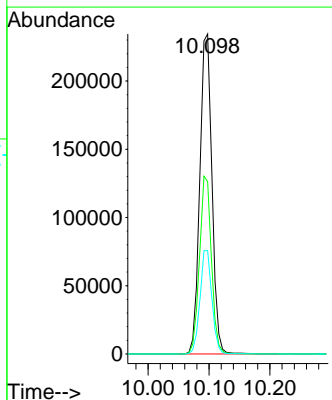
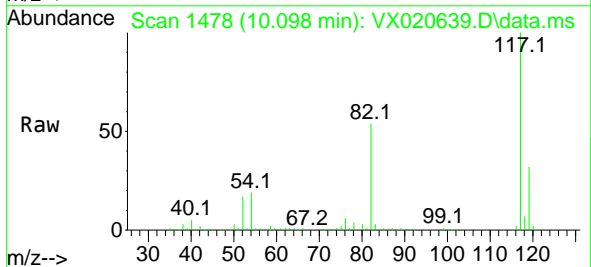
Ion	Ratio	Lower	Upper
95	100		
174	76.0	0.0	154.6
176	75.1	0.0	155.8

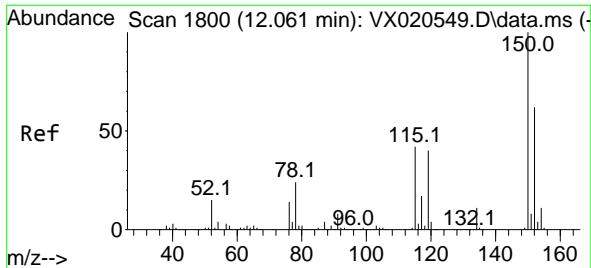


#63
 Chlorobenzene-d5
 Concen: 50.00 ug/l
 RT: 10.098 min Scan# 1478
 Delta R.T. 0.006 min
 Lab File: VX020639.D
 Acq: 15 Jan 2021 18:32

Tgt Ion: 117 Resp: 325378

Ion	Ratio	Lower	Upper
117	100		
82	53.8	47.4	71.2
119	32.3	26.6	39.8

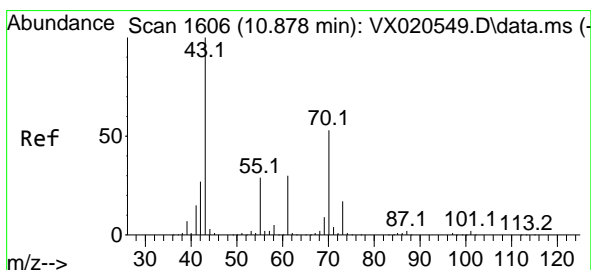
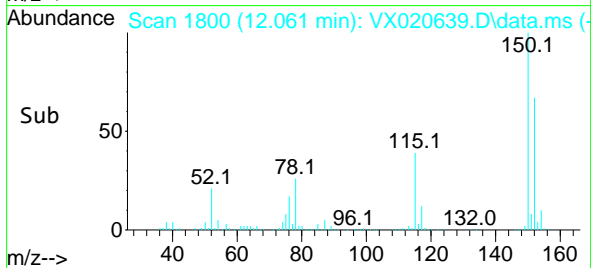
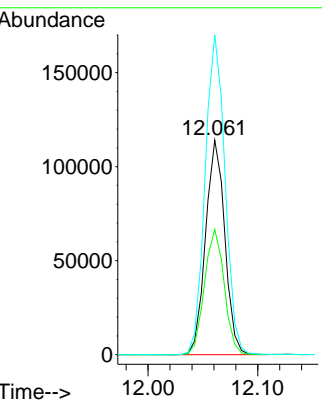
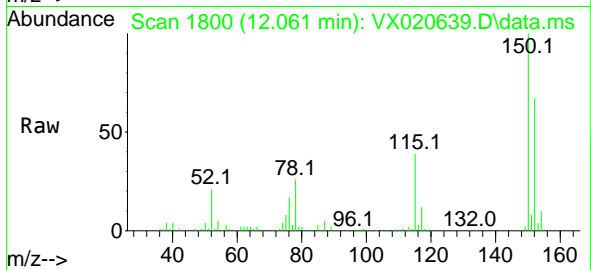




#72
 1,4-Dichlorobenzene-d4
 Concen: 50.00 ug/l
 RT: 12.061 min Scan# 1800
 Delta R.T. -0.000 min
 Lab File: VX020639.D
 Acq: 15 Jan 2021 18:32

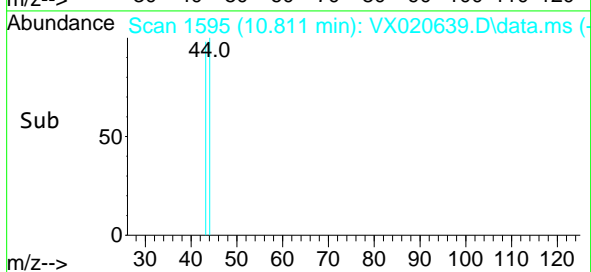
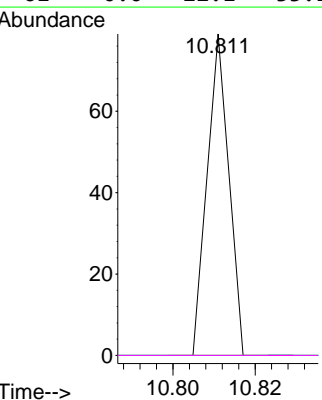
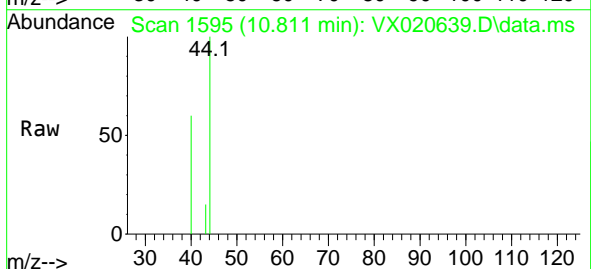
Instrument :
 MSVOA_X
 ClientSampleId :
 STORAGE-BLANK-SAMPLE-MANA

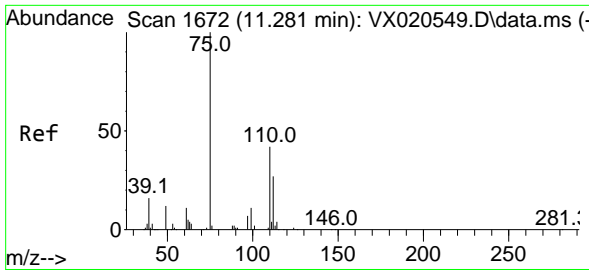
Tgt Ion	Resp	Lower	Upper
152	139469		
115	59.7	41.1	123.3
150	153.7	0.0	349.0



#74
 N-amy1 acetate
 Concen: 1.24 ug/l
 RT: 10.811 min Scan# 1595
 Delta R.T. -0.067 min
 Lab File: VX020639.D
 Acq: 15 Jan 2021 18:32

Tgt Ion	Resp	Lower	Upper
43	29		
70	0.0	39.0	58.6#
55	0.0	21.5	32.3#
61	0.0	22.1	33.1#

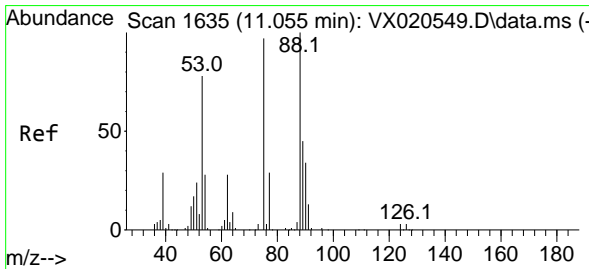
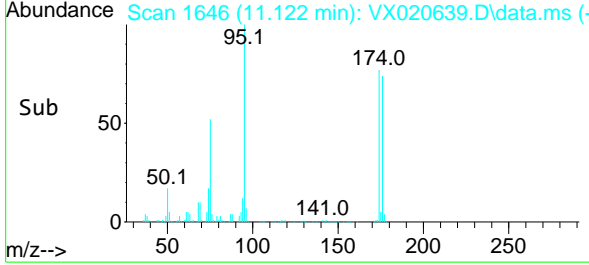
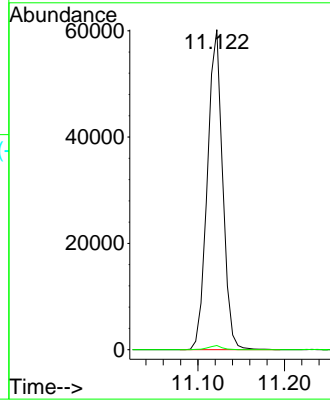
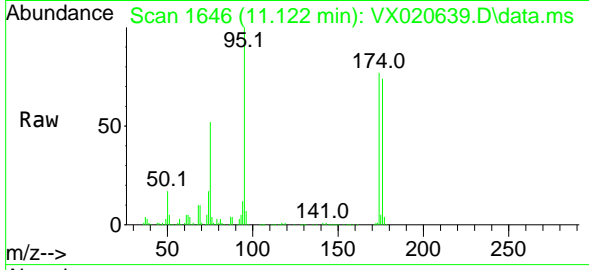




#76
 1,2,3-Trichloropropane
 Concen: 25.07 ug/l
 RT: 11.122 min Scan# 1646
 Delta R.T. -0.159 min
 Lab File: VX020639.D
 Acq: 15 Jan 2021 18:32

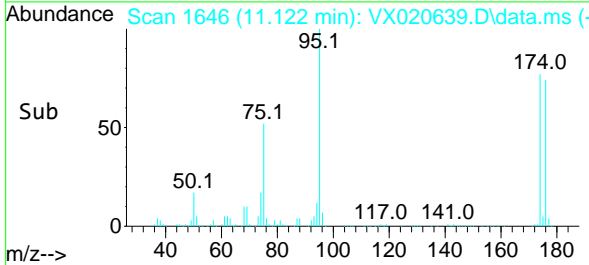
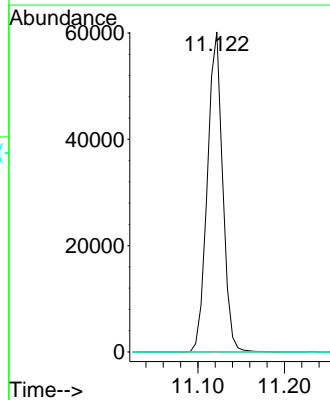
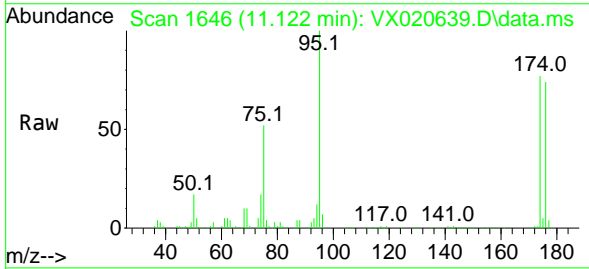
Instrument :
 MSVOA_X
 ClientSampleId :
 STORAGE-BLANK-SAMPLE-MANA

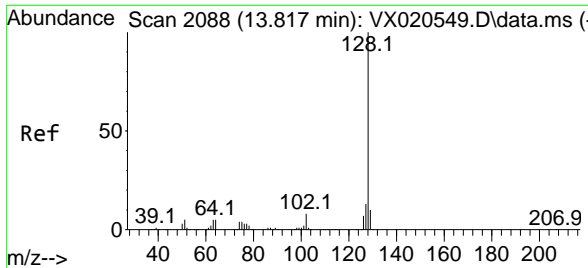
Tgt Ion: 75 Resp: 73672
 Ion Ratio Lower Upper
 75 100
 77 1.2 19.1 57.5#



#81
 trans-1,4-Dichloro-2-butene
 Concen: 68.32 ug/l
 RT: 11.122 min Scan# 1646
 Delta R.T. 0.067 min
 Lab File: VX020639.D
 Acq: 15 Jan 2021 18:32

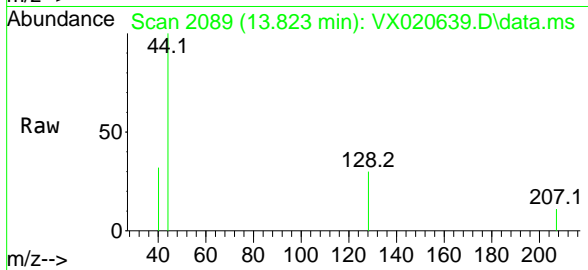
Tgt Ion: 75 Resp: 73672
 Ion Ratio Lower Upper
 75 100
 53 0.1 74.5 111.7#
 89 0.0 37.9 56.9#





#95
 Naphthalene
 Concen: 3.86 ug/l
 RT: 13.823 min Scan# 2089
 Delta R.T. 0.006 min
 Lab File: VX020639.D
 Acq: 15 Jan 2021 18:32

Instrument :
 MSVOA_X
ClientSampled :
 STORAGE-BLANK-SAMPLE-MANA



Tgt Ion:128 Resp: 166

Ion	Ratio	Lower	Upper
128	100		
127	0.0	10.3	15.5#
129	0.0	8.8	13.2#

