

Data Path : Z:\voasrv\HPCHEM1\MSVOA_X\Data\VX011521\
 Data File : VX020641.D
 Acq On : 15 Jan 2021 19:18
 Operator : JC/MD
 Sample : M1157-05
 Misc : 5.0mL/MSVOA_X/WATER
 ALS Vial : 15 Sample Multiplier: 1

Instrument :
 MSVOA_X
 ClientSampleId :
 VOC-BLANK

Integration Parameters: RTEINT.P

Integrator: RTE
 Smoothing : ON Filtering: 5
 Sampling : 1 Min Area: 3 % of largest Peak
 Start Thrs: 0.2 Max Peaks: 100
 Stop Thrs : 0 Peak Location: TOP

If leading or trailing edge < 100 prefer < Baseline drop else tangent >
 Peak separation: 5

Method : Z:\VOASRV\HPCHEM1\MSVOA_X\METHOD\82X011121W.M
 Title : SW846 8260

Signal : TIC: VX020641.D\data.ms

peak #	R.T. min	first scan	max scan	last scan	PK TY	peak height	corr. area	corr. % max.	% of total
1	1.630	77	89	93	rBV5	6072	17307	1.47%	0.277%
2	5.465	706	718	733	rBV	144241	413522	35.09%	6.619%
3	5.629	733	745	762	rVB	231390	643546	54.61%	10.300%
4	6.031	799	811	828	rBV	154814	411951	34.96%	6.594%
5	6.830	931	942	953	rBV	371409	868373	73.69%	13.899%
6	8.696	1241	1248	1261	rBV	780380	1178395	100.00%	18.861%
7	10.098	1471	1478	1494	rVB	749636	1025877	87.06%	16.420%
8	11.122	1640	1646	1660	rBV	590571	749305	63.59%	11.993%
9	12.061	1795	1800	1808	rVB	763887	939493	79.73%	15.037%

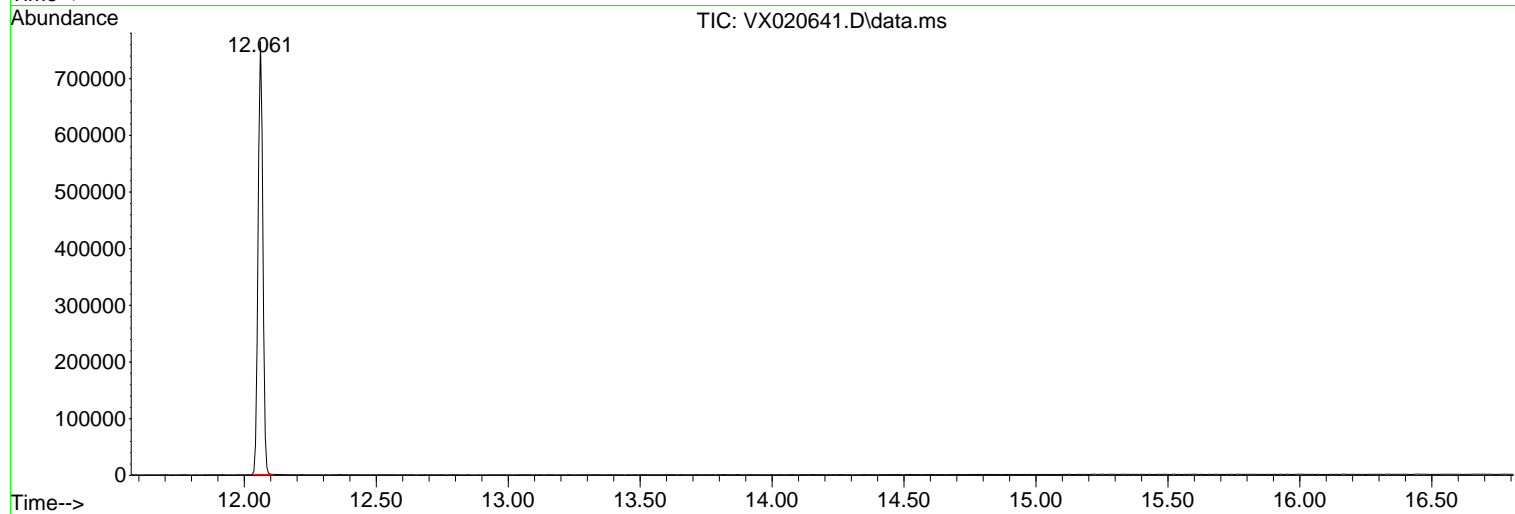
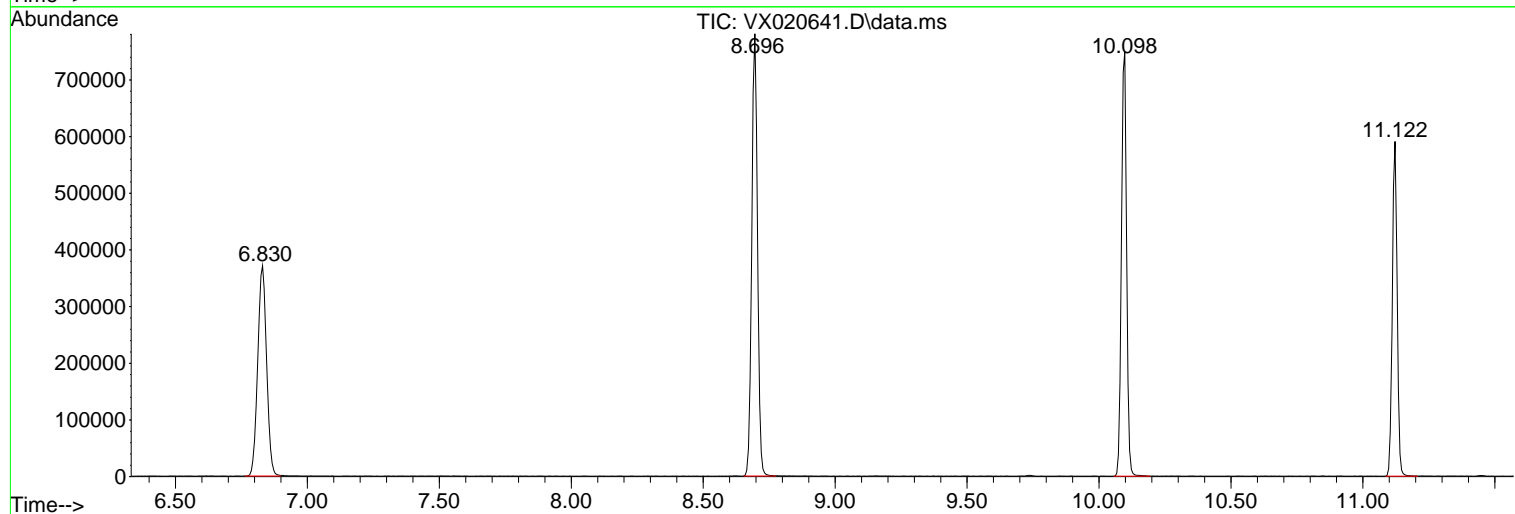
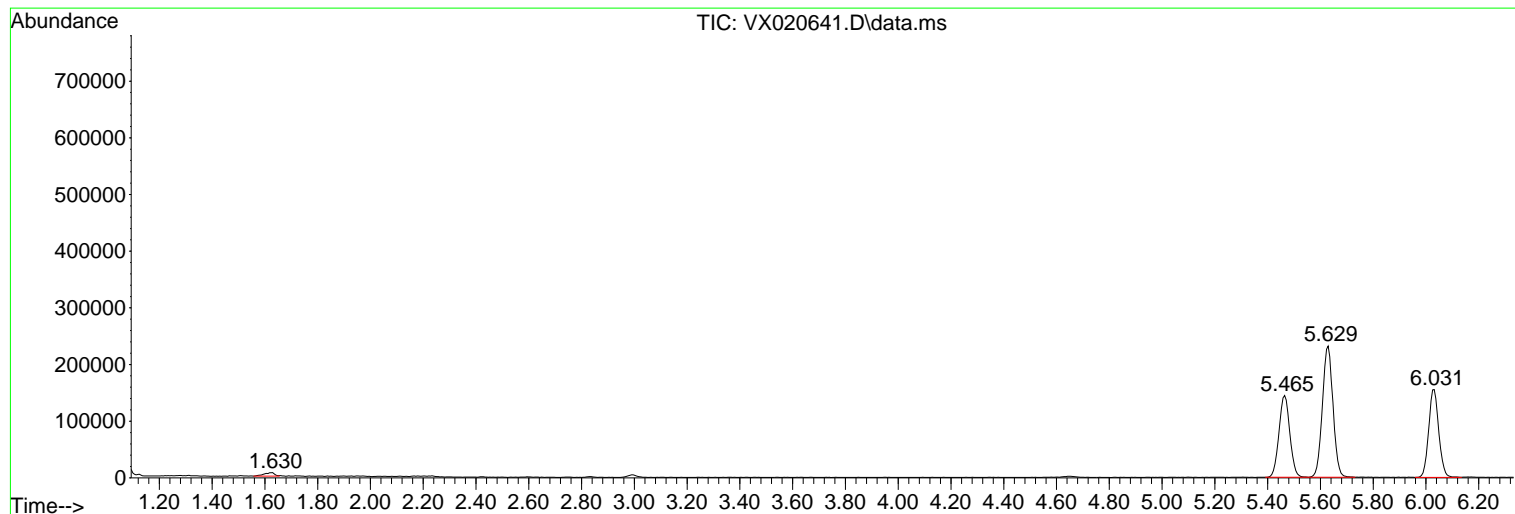
Sum of corrected areas: 6247769

Data Path : Z:\voasrv\HPCHEM1\MSVOA_X\Data\VX011521\
 Data File : VX020641.D
 Acq On : 15 Jan 2021 19:18
 Operator : JC/MD
 Sample : M1157-05
 Misc : 5.0mL/MSVOA_X/WATER
 ALS Vial : 15 Sample Multiplier: 1

Instrument :
 MSVOA_X
 ClientSampled :
 VOC-BLANK

Quant Method : Z:\VOASRV\HPCHEM1\MSVOA_X\METHOD\82X011121W.M
 Quant Title : SW846 8260

TIC Library : C:\DATABASE\NIST11.L
 TIC Integration Parameters: LSCINT.P



Data Path : Z:\voasrv\HPCHEM1\MSVOA_X\Data\VX011521\
Data File : VX020641.D
Acq On : 15 Jan 2021 19:18
Operator : JC/MD
Sample : M1157-05
Misc : 5.0mL/MSVOA_X/WATER
ALS Vial : 15 Sample Multiplier: 1

Instrument :
MSVOA_X
ClientSampled :
VOC-BLANK

Quant Method : Z:\VOASRV\HPCHEM1\MSVOA_X\METHOD\82X011121W.M
Quant Title : SW846 8260

TIC Library : C:\DATABASE\NIST11.L
TIC Integration Parameters: LSCINT.P

No Library Search Compounds Detected

Data Path : Z:\voasrv\HPCHEM1\MSVOA_X\Data\VX011521\
Data File : VX020641.D
Acq On : 15 Jan 2021 19:18
Operator : JC/MD
Sample : M1157-05
Misc : 5.0mL/MSVOA_X/WATER
ALS Vial : 15 Sample Multiplier: 1

Instrument :
MSVOA_X
ClientSampleId :
VOC-BLANK

Quant Method : Z:\VOASRV\HPCHEM1\MSVOA_X\METHOD\82X011121W.M
Quant Title : SW846 8260

TIC Library : C:\DATABASE\NIST11.L
TIC Integration Parameters: LSCINT.P

TIC Top Hit name	RT	EstConc	Units	Response	--Internal Standard--		
					#	RT	Resp Conc
