

Data Path : Z:\voasrv\HPCHEM1\MSVOA\_X\Data\VX011524\  
 Data File : VX039754.D  
 Acq On : 15 Jan 2024 14:48  
 Operator : JC/MD  
 Sample : P1145-01  
 Misc : 5.0mL/MSVOA\_X/WATER  
 ALS Vial : 9 Sample Multiplier: 1

Instrument :  
 MSVOA\_X  
 ClientSampleId :  
 BP-VPB-195-TB-20240110

Quant Time: Jan 16 01:41:20 2024  
 Quant Method : Z:\voasrv\HPCHEM1\MSVOA\_X\Method\82X011024W.M  
 Quant Title : SW846 8260  
 QLast Update : Thu Jan 11 03:51:26 2024  
 Response via : Initial Calibration

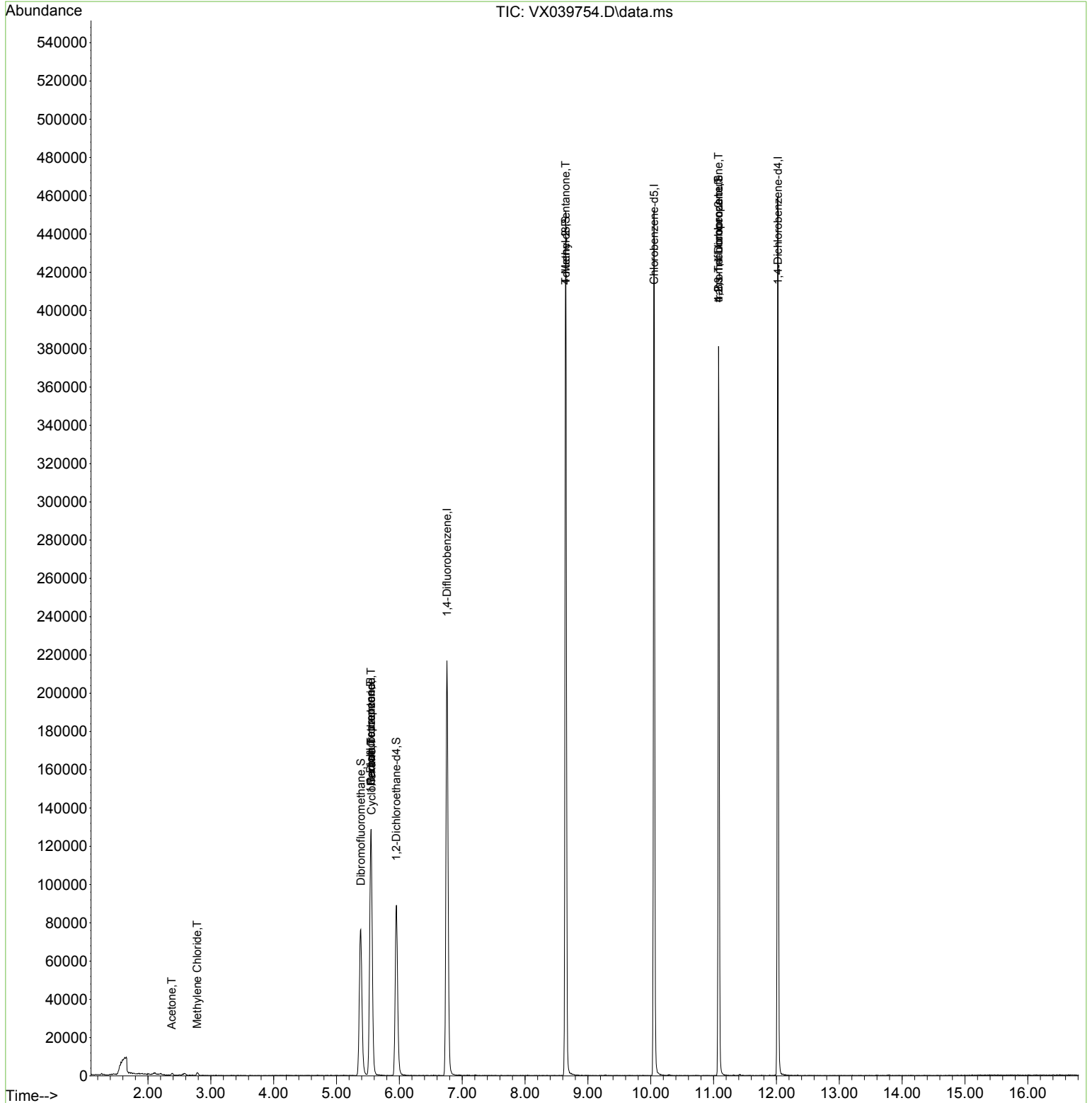
Compound	R.T.	QIon	Response	Conc	Units	Dev(Min)
-----						
Internal Standards						
1) Pentafluorobenzene	5.550	168	115881	50.000	ug/l	0.00
34) 1,4-Difluorobenzene	6.757	114	216485	50.000	ug/l	0.00
63) Chlorobenzene-d5	10.055	117	203121	50.000	ug/l	0.00
72) 1,4-Dichlorobenzene-d4	12.024	152	90473	50.000	ug/l	0.00
System Monitoring Compounds						
33) 1,2-Dichloroethane-d4	5.952	65	85318	43.952	ug/l	0.00
Spiked Amount	50.000	Range 78 - 117	Recovery	=	87.900%	
35) Dibromofluoromethane	5.385	113	67606	46.365	ug/l	0.00
Spiked Amount	50.000	Range 75 - 124	Recovery	=	92.740%	
50) Toluene-d8	8.647	98	261485	47.548	ug/l	0.00
Spiked Amount	50.000	Range 92 - 112	Recovery	=	95.100%	
62) 4-Bromofluorobenzene	11.079	95	104206	48.456	ug/l	0.00
Spiked Amount	50.000	Range 83 - 123	Recovery	=	96.920%	
Target Compounds						
						Qvalue
16) Acetone	2.380	43	1300	1.191	ug/l	93
20) Methylene Chloride	2.782	84	725	0.439	ug/l #	90
31) Cyclohexane	5.556	56	2978	1.162	ug/l #	16
36) 1,1-Dichloropropene	5.544	75	10214	4.500	ug/l #	51
38) Carbon Tetrachloride	5.550	117	12710	6.114	ug/l #	16
51) 4-Methyl-2-Pentanone	8.647	43	1345	0.440	ug/l #	1
76) 1,2,3-Trichloropropane	11.079	75	55486	23.655	ug/l #	39
81) trans-1,4-Dichloro-2-b...	11.079	75	55486	68.091	ug/l #	5
-----						

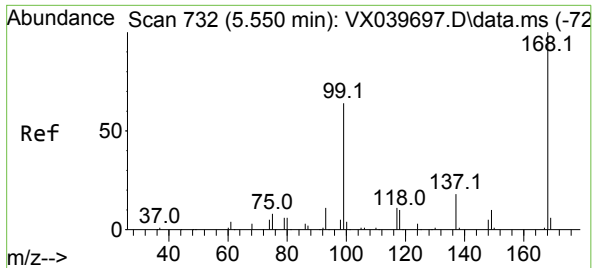
(#) = qualifier out of range (m) = manual integration (+) = signals summed

Data Path : Z:\voasrv\HPCHEM1\MSVOA\_X\Data\VX011524\  
 Data File : VX039754.D  
 Acq On : 15 Jan 2024 14:48  
 Operator : JC/MD  
 Sample : P1145-01  
 Misc : 5.0mL/MSVOA\_X/WATER  
 ALS Vial : 9 Sample Multiplier: 1

**Instrument :**  
 MSVOA\_X  
**ClientSampleId :**  
 BP-VPB-195-TB-20240110

Quant Time: Jan 16 01:41:20 2024  
 Quant Method : Z:\voasrv\HPCHEM1\MSVOA\_X\Method\82X011024W.M  
 Quant Title : SW846 8260  
 QLast Update : Thu Jan 11 03:51:26 2024  
 Response via : Initial Calibration

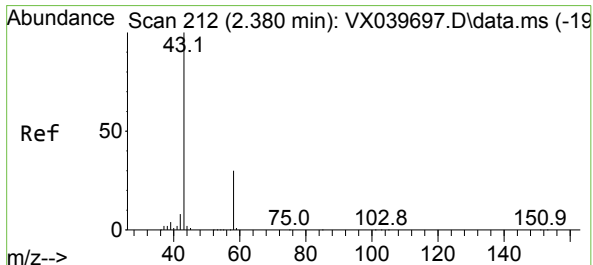
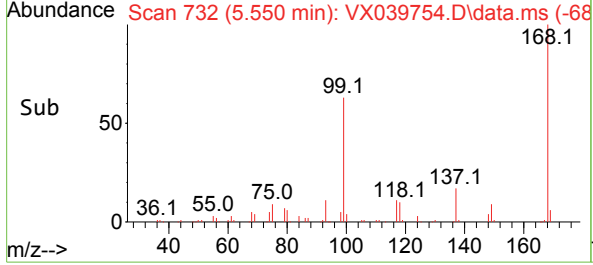
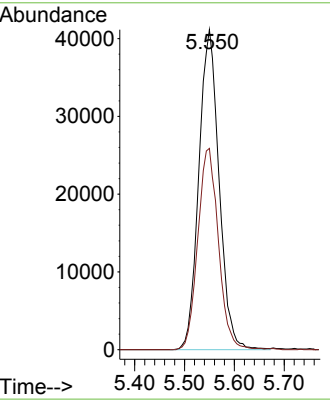
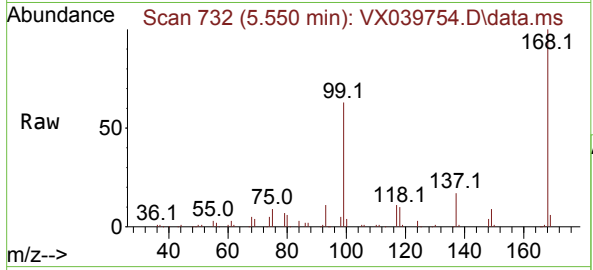




#1  
 Pentafluorobenzene  
 Concen: 50.000 ug/l  
 RT: 5.550 min Scan# 71  
 Delta R.T. -0.000 min  
 Lab File: VX039754.D  
 Acq: 15 Jan 2024 14:48

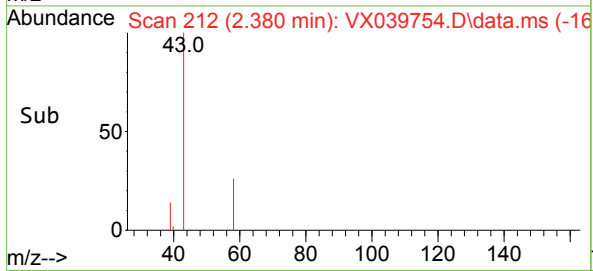
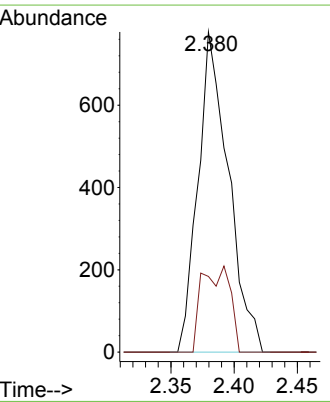
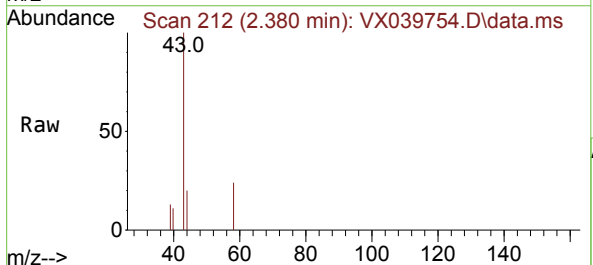
Instrument : MSVOA\_X  
 ClientSampleId : BP-VPB-195-TB-20240110

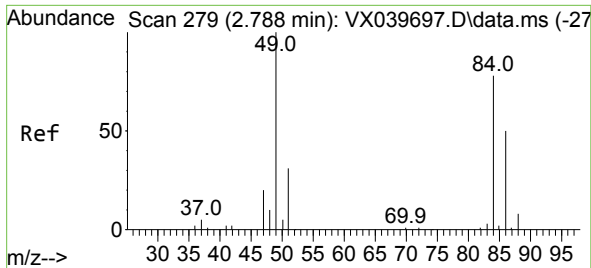
Tgt Ion:168 Resp: 115881  
 Ion Ratio Lower Upper  
 168 100  
 99 62.9 56.6 85.0



#16  
 Acetone  
 Concen: 1.191 ug/l  
 RT: 2.380 min Scan# 212  
 Delta R.T. 0.000 min  
 Lab File: VX039754.D  
 Acq: 15 Jan 2024 14:48

Tgt Ion: 43 Resp: 1300  
 Ion Ratio Lower Upper  
 43 100  
 58 23.7 21.9 32.9

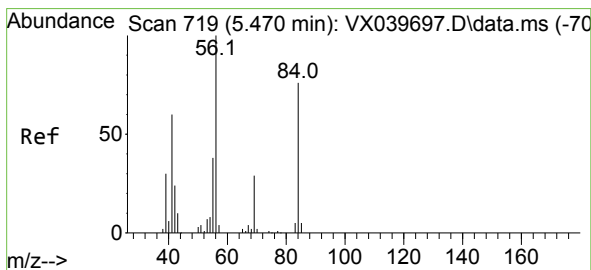
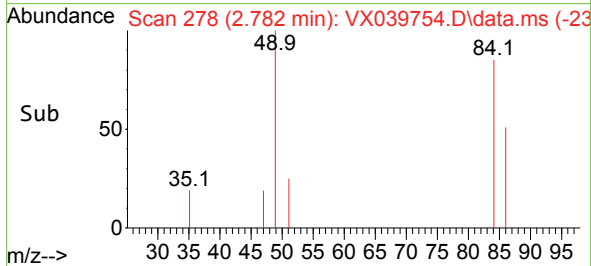
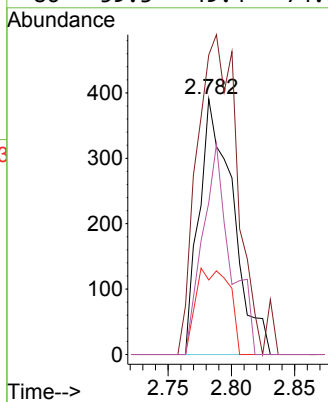
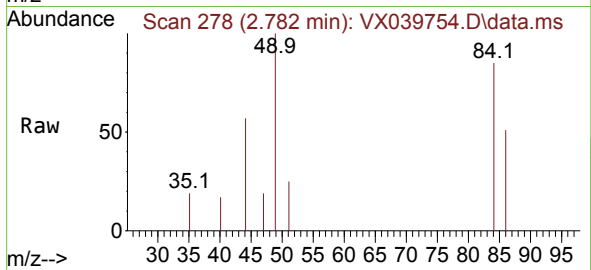




#20  
 Methylene Chloride  
 Concen: 0.439 ug/l  
 RT: 2.782 min Scan# 21  
 Delta R.T. -0.006 min  
 Lab File: VX039754.D  
 Acq: 15 Jan 2024 14:48

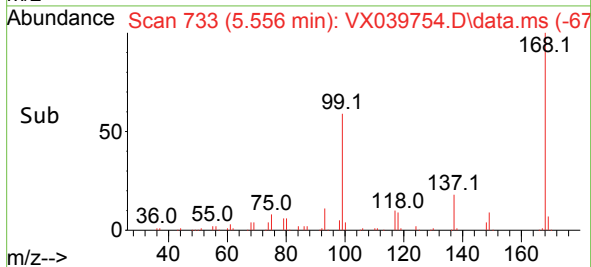
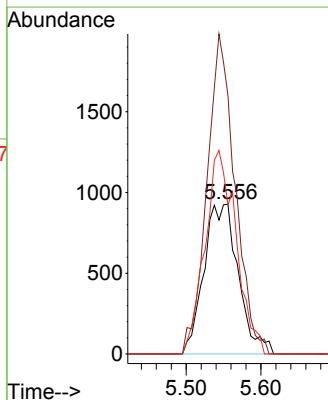
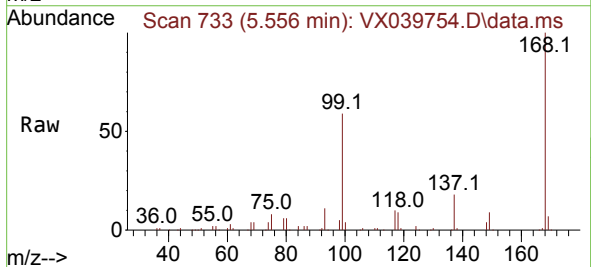
Instrument : MSVOA\_X  
 ClientSampleId : BP-VPB-195-TB-20240110

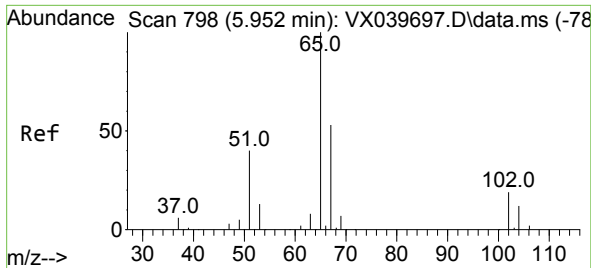
Tgt Ion	Resp	Lower	Upper
84	100		
49	117.1	103.6	155.4
51	29.2	33.8	50.6#
86	59.3	49.4	74.0



#31  
 Cyclohexane  
 Concen: 1.162 ug/l  
 RT: 5.556 min Scan# 733  
 Delta R.T. 0.085 min  
 Lab File: VX039754.D  
 Acq: 15 Jan 2024 14:48

Tgt Ion	Resp	Lower	Upper
56	100		
69	172.7	23.4	35.2#
84	99.6	65.9	98.9#

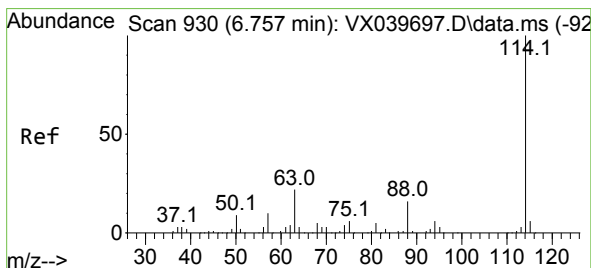
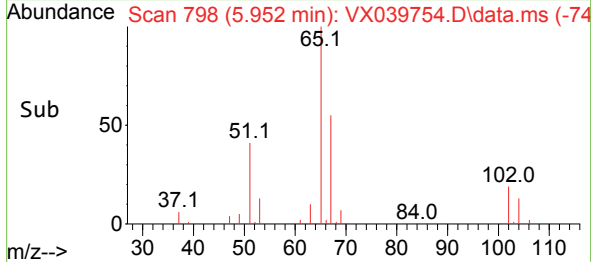
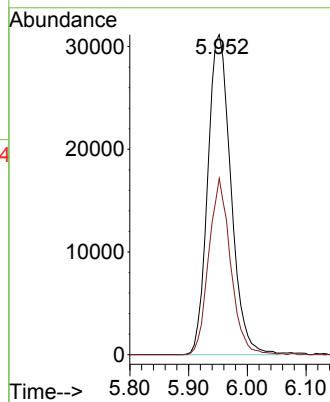
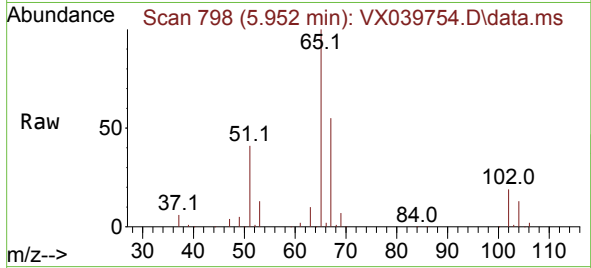




#33  
 1,2-Dichloroethane-d4  
 Concen: 43.952 ug/l  
 RT: 5.952 min Scan# 798  
 Delta R.T. 0.000 min  
 Lab File: VX039754.D  
 Acq: 15 Jan 2024 14:48

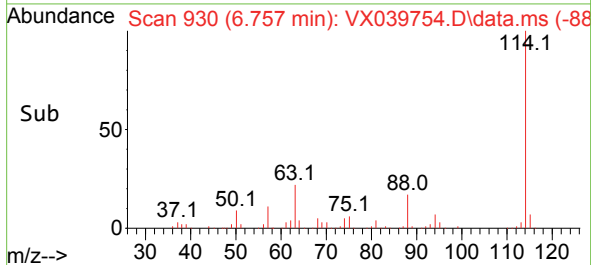
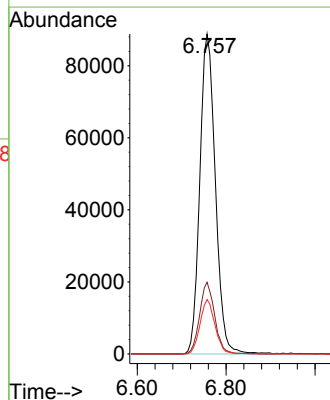
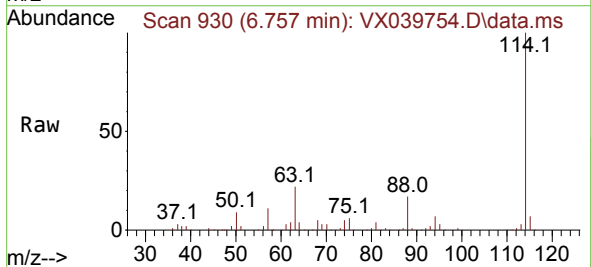
Instrument : MSVOA\_X  
 ClientSampleId : BP-VPB-195-TB-20240110

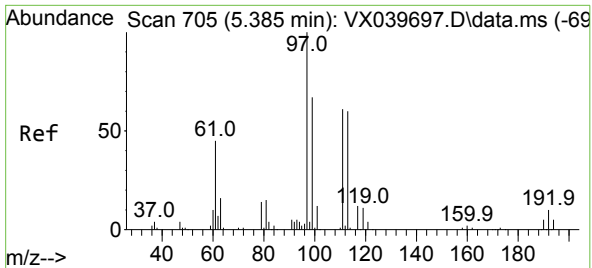
Tgt Ion: 65 Resp: 85318  
 Ion Ratio Lower Upper  
 65 100  
 67 52.0 0.0 100.2



#34  
 1,4-Difluorobenzene  
 Concen: 50.000 ug/l  
 RT: 6.757 min Scan# 930  
 Delta R.T. 0.000 min  
 Lab File: VX039754.D  
 Acq: 15 Jan 2024 14:48

Tgt Ion:114 Resp: 216485  
 Ion Ratio Lower Upper  
 114 100  
 63 22.4 0.0 45.0  
 88 17.0 0.0 36.6

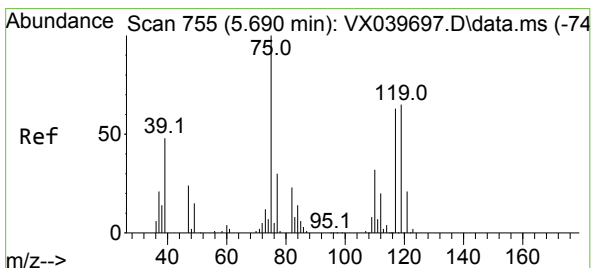
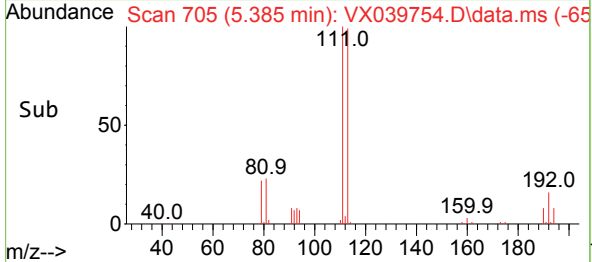
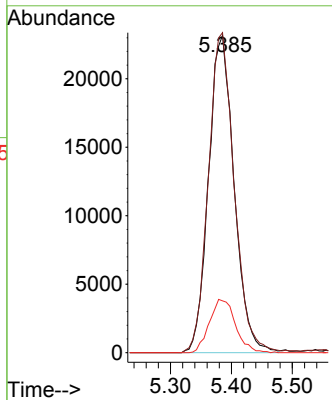
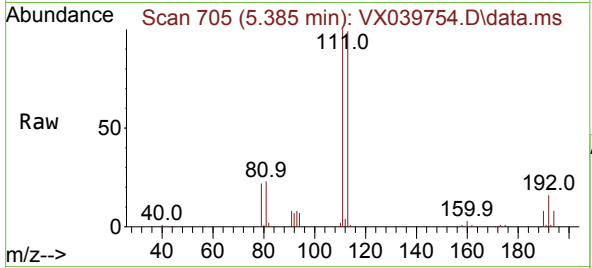




#35  
 Dibromofluoromethane  
 Concen: 46.365 ug/l  
 RT: 5.385 min Scan# 705  
 Delta R.T. 0.000 min  
 Lab File: VX039754.D  
 Acq: 15 Jan 2024 14:48

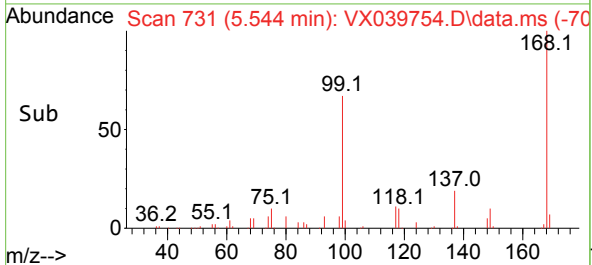
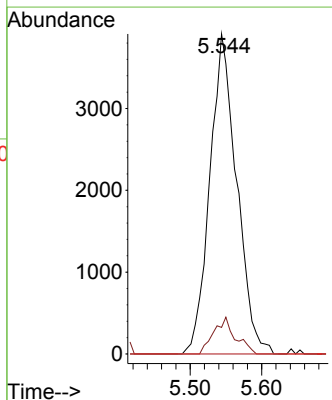
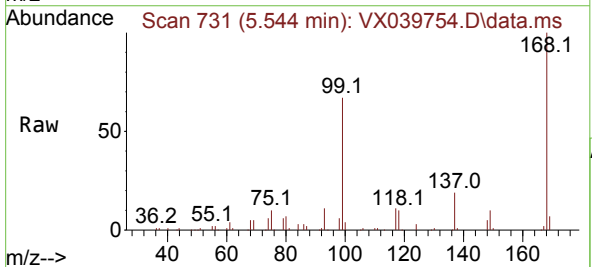
Instrument : MSVOA\_X  
 Client Sample Id : BP-VPB-195-TB-20240110

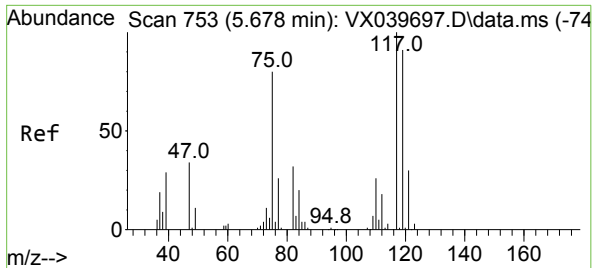
Tgt Ion:	113	Resp:	67606
Ion Ratio	Lower	Upper	
113	100		
111	101.6	82.9	124.3
192	17.1	13.3	19.9



#36  
 1,1-Dichloropropene  
 Concen: 4.500 ug/l  
 RT: 5.544 min Scan# 731  
 Delta R.T. -0.146 min  
 Lab File: VX039754.D  
 Acq: 15 Jan 2024 14:48

Tgt Ion:	75	Resp:	10214
Ion Ratio	Lower	Upper	
75	100		
110	9.2	17.0	50.9#
77	0.0	24.7	37.1#



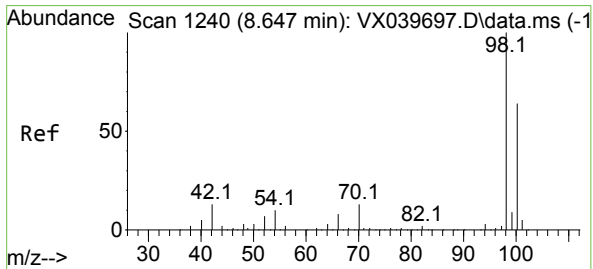
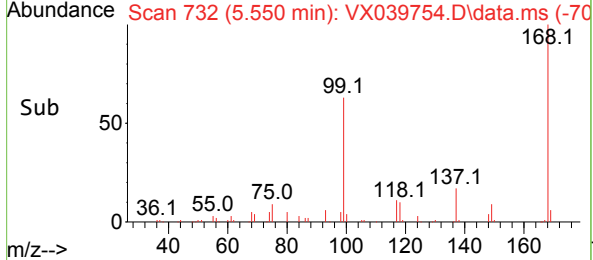
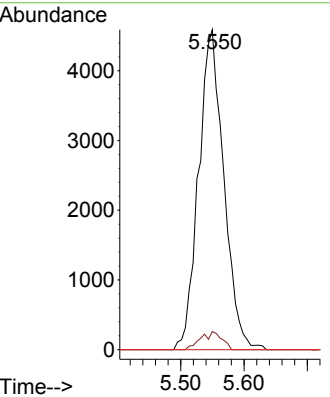
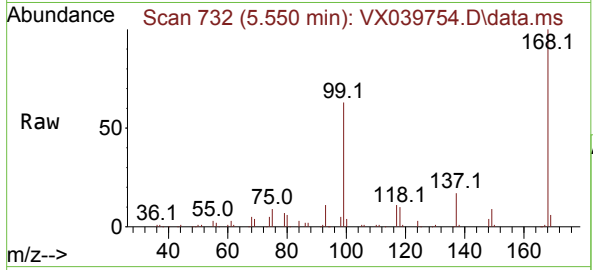


#38  
 Carbon Tetrachloride  
 Concen: 6.114 ug/l  
 RT: 5.550 min Scan# 711  
 Delta R.T. -0.128 min  
 Lab File: VX039754.D  
 Acq: 15 Jan 2024 14:48

Instrument : MSVOA\_X  
 ClientSampleId : BP-VPB-195-TB-20240110

Tgt Ion:117 Resp: 12710

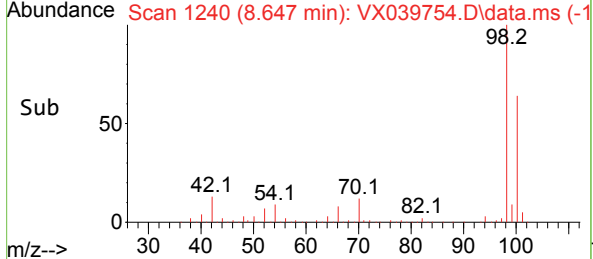
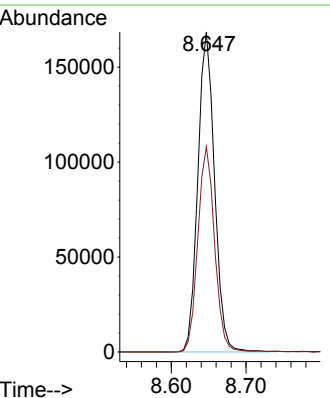
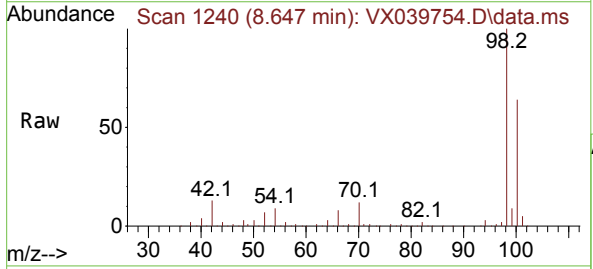
Ion	Ratio	Lower	Upper
117	100		
119	5.6	78.2	117.2#
121	0.0	24.4	36.6#

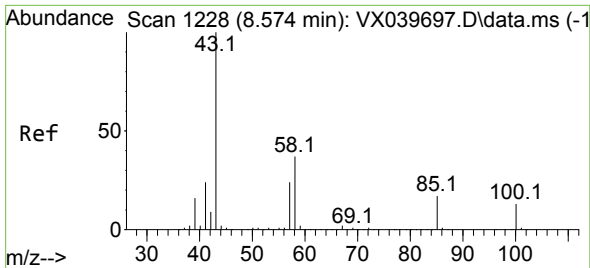


#50  
 Toluene-d8  
 Concen: 47.548 ug/l  
 RT: 8.647 min Scan# 1240  
 Delta R.T. 0.000 min  
 Lab File: VX039754.D  
 Acq: 15 Jan 2024 14:48

Tgt Ion: 98 Resp: 261485

Ion	Ratio	Lower	Upper
98	100		
100	64.5	53.1	79.7

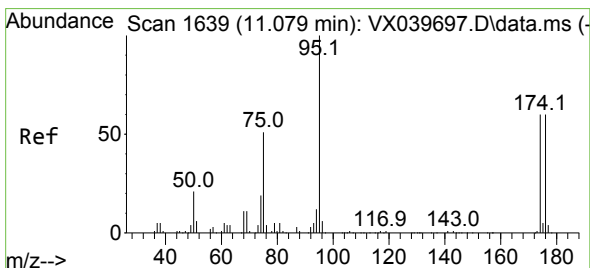
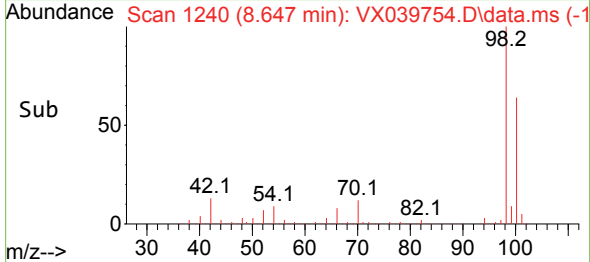
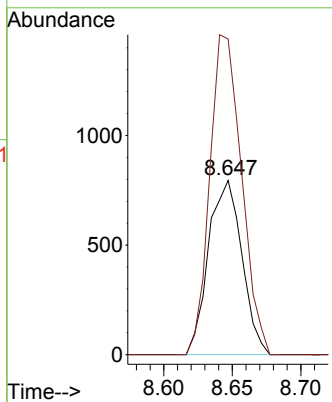
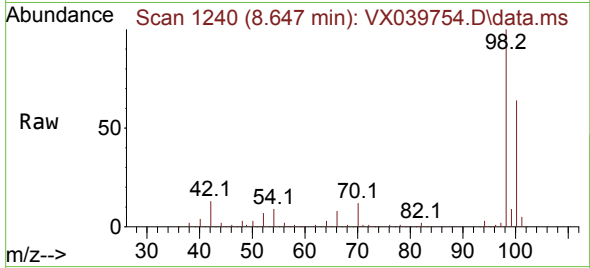




#51  
 4-Methyl-2-Pentanone  
 Concen: 0.440 ug/l  
 RT: 8.647 min Scan# 11  
 Delta R.T. 0.073 min  
 Lab File: VX039754.D  
 Acq: 15 Jan 2024 14:48

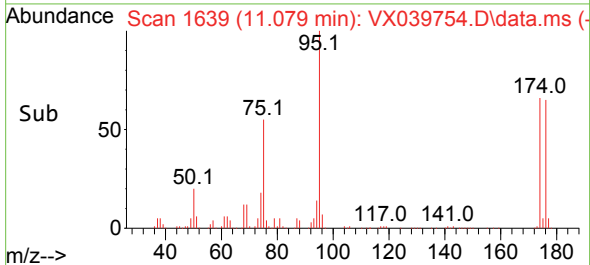
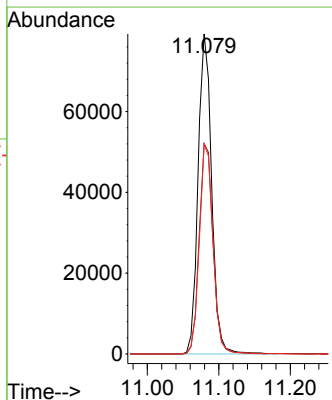
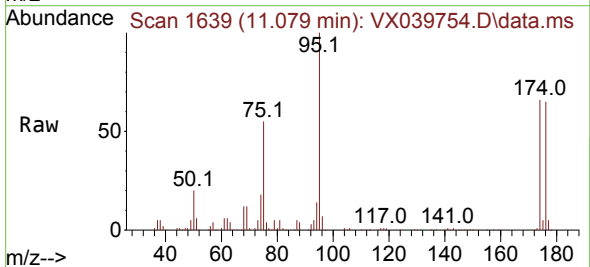
Instrument : MSVOA\_X  
 ClientSampleId : BP-VPB-195-TB-20240110

Tgt Ion: 43 Resp: 1345  
 Ion Ratio Lower Upper  
 43 100  
 58 175.2 30.4 45.6#

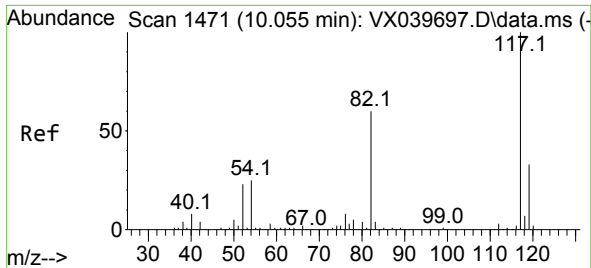


#62  
 4-Bromofluorobenzene  
 Concen: 48.456 ug/l  
 RT: 11.079 min Scan# 1639  
 Delta R.T. 0.000 min  
 Lab File: VX039754.D  
 Acq: 15 Jan 2024 14:48

Tgt Ion: 95 Resp: 104206  
 Ion Ratio Lower Upper  
 95 100  
 174 67.2 0.0 135.6  
 176 65.7 0.0 131.0

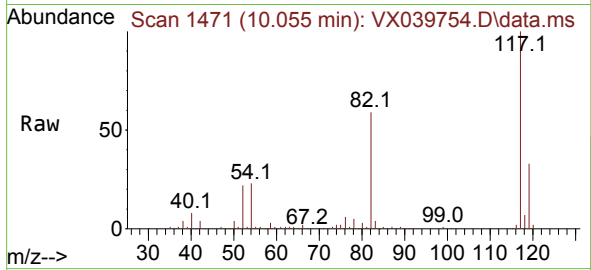




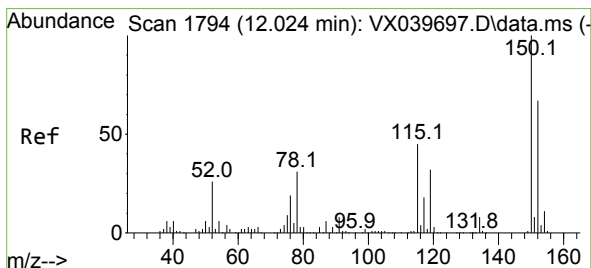
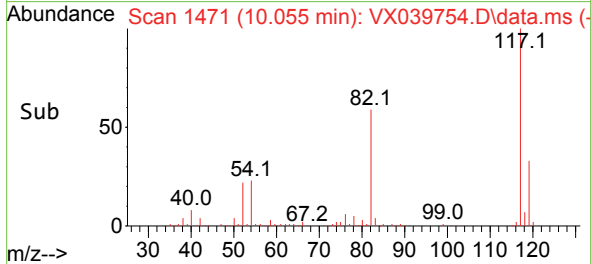
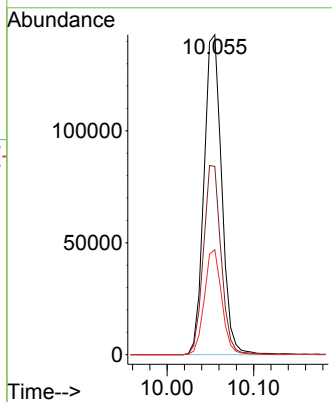


#63  
 Chlorobenzene-d5  
 Concen: 50.000 ug/l  
 RT: 10.055 min Scan# 14  
 Delta R.T. 0.000 min  
 Lab File: VX039754.D  
 Acq: 15 Jan 2024 14:48

Instrument : MSVOA\_X  
 ClientSampleId : BP-VPB-195-TB-20240110

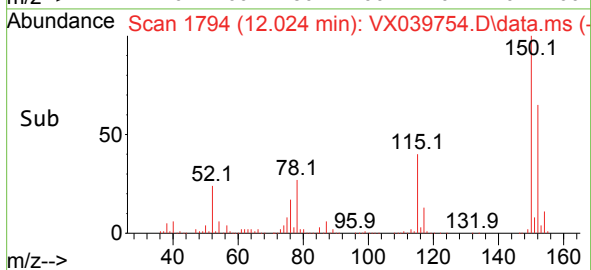
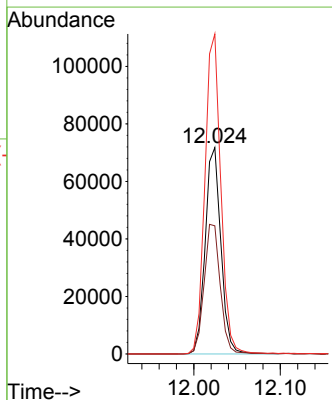
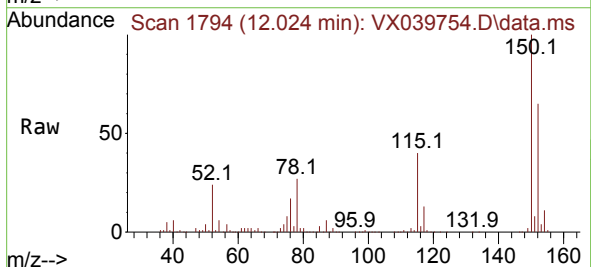


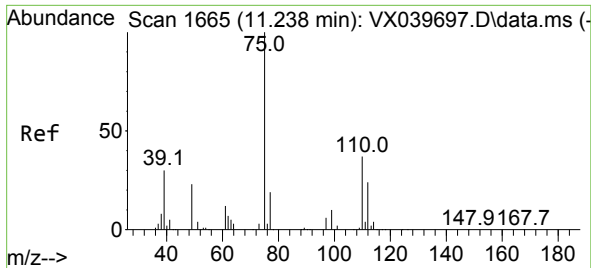
Tgt Ion:117 Resp: 203121  
 Ion Ratio Lower Upper  
 117 100  
 82 58.9 46.2 69.4  
 119 32.8 25.5 38.3



#72  
 1,4-Dichlorobenzene-d4  
 Concen: 50.000 ug/l  
 RT: 12.024 min Scan# 1794  
 Delta R.T. 0.000 min  
 Lab File: VX039754.D  
 Acq: 15 Jan 2024 14:48

Tgt Ion:152 Resp: 90473  
 Ion Ratio Lower Upper  
 152 100  
 115 64.7 43.3 129.9  
 150 156.6 0.0 345.0

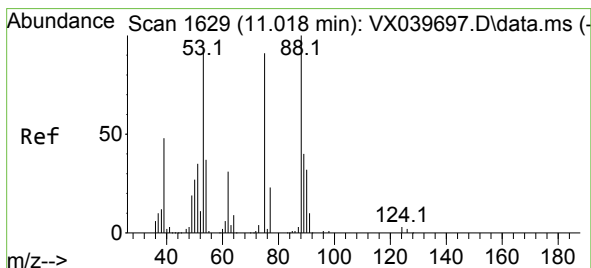
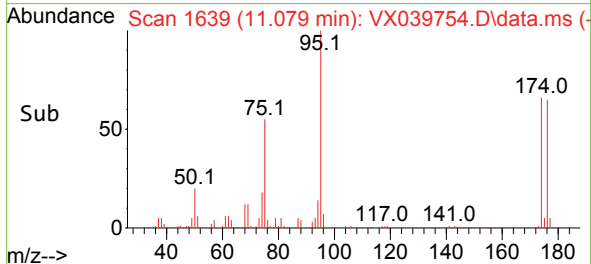
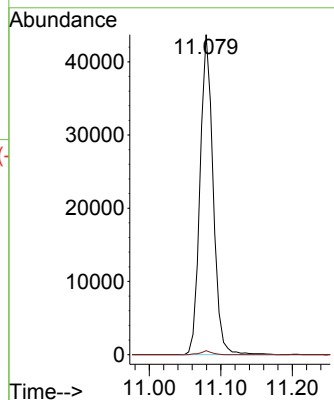
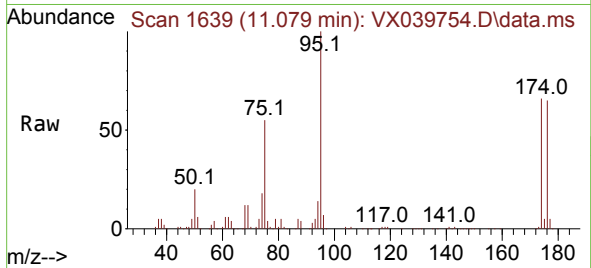




#76  
 1,2,3-Trichloropropane  
 Concen: 23.655 ug/l  
 RT: 11.079 min Scan# 1639  
 Delta R.T. -0.158 min  
 Lab File: VX039754.D  
 Acq: 15 Jan 2024 14:48

Instrument : MSVOA\_X  
 ClientSampleId : BP-VPB-195-TB-20240110

Tgt Ion: 75 Resp: 55486  
 Ion Ratio Lower Upper  
 75 100  
 77 1.1 19.1 57.5#



#81  
 trans-1,4-Dichloro-2-butene  
 Concen: 68.091 ug/l  
 RT: 11.079 min Scan# 1639  
 Delta R.T. 0.061 min  
 Lab File: VX039754.D  
 Acq: 15 Jan 2024 14:48

Tgt Ion: 75 Resp: 55486  
 Ion Ratio Lower Upper  
 75 100  
 53 0.0 90.5 135.7#  
 89 0.1 36.9 55.3#

