

Data Path : Z:\VOASRV\HPCHEM1\MSVOA X\DATA\VX011620\
 Data File : VX014636.D
 Acq On : 16 Jan 2020 14:24
 Operator : JC/SP
 Sample : L1135-03
 Misc : 5.0mL/MSVOA X/WATER
 ALS Vial : 10 Sample Multiplier: 1

Instrument :
 MSVOA_X
 ClientSampleId :
 REP-011420

Quant Time: Jan 17 06:24:05 2020
 Quant Method : Z:\VOASRV\HPCHEM1\MSVOA X\METHOD\624X011520W.M
 Quant Title : METHOD 624 VOLATILE ORGANIC ANALYSIS
 QLast Update : Wed Jan 15 12:41:12 2020
 Response via : Initial Calibration

Internal Standards	R.T.	QIon	Response	Conc	Units	Dev(Min)
1) Bromochloromethane	5.01	128	78321	30.00	ug/l	0.00
28) 1,4-Difluorobenzene	6.85	114	421753	30.00	ug/l	0.00
57) Chlorobenzene-d5	10.11	117	371792	30.00	ug/l	0.00

System Monitoring Compounds

27) 1,2-Dichloroethane-d4	6.06	65	172313	31.30	ug/l	0.00
Spiked Amount	30.000	Range	50 - 169	Recovery	=	104.33%
60) 4-Bromofluorobenzene	11.13	95	160728	27.02	ug/l	0.00
Spiked Amount	30.000	Range	56 - 143	Recovery	=	90.07%
63) Toluene-d8	8.71	98	503435	29.98	ug/l	0.00
Spiked Amount	30.000	Range	66 - 137	Recovery	=	99.93%

Target Compounds

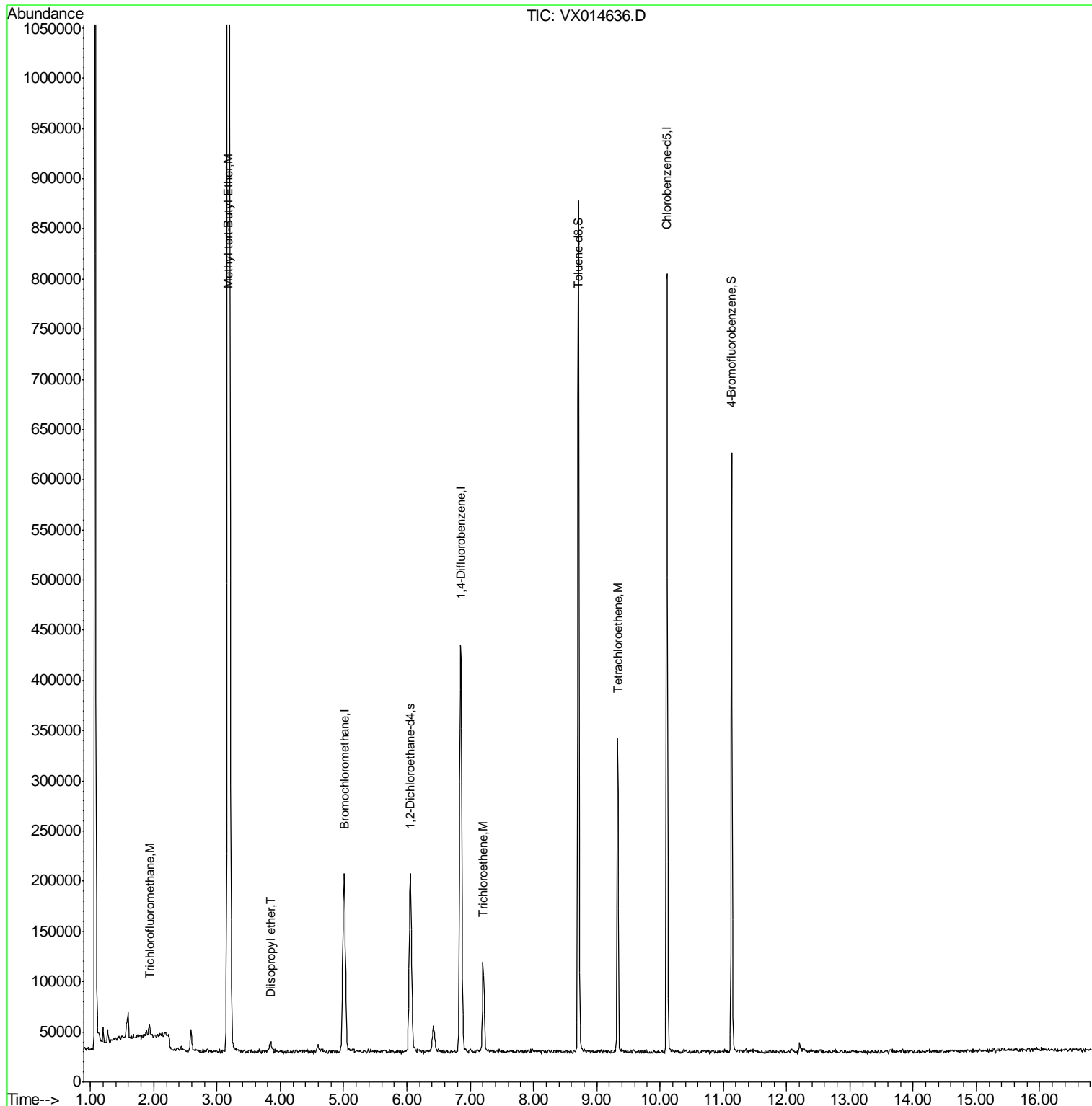
Target Compounds	R.T.	QIon	Response	Conc	Units	Ovalue
7) Trichlorofluoromethane	1.93	101	6591	0.895	ug/l	95
20) Diisopropyl ether	3.84	45	9903	0.624	ug/l #	87
24) Methyl tert-Butyl Ether	3.18	73	2756409	191.031	ug/l	99
37) Trichloroethene	7.20	130	36978	7.066	ug/l	96
61) Tetrachloroethene	9.33	164	62751	11.419	ug/l	99

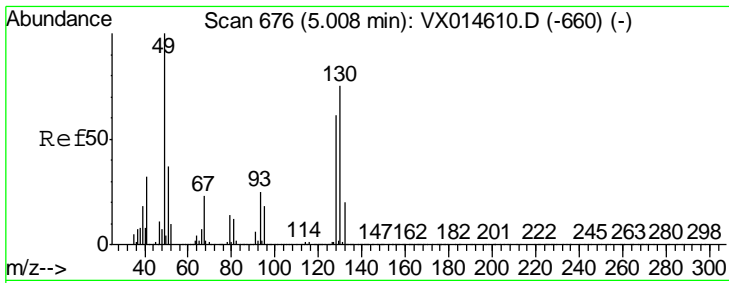
(#) = qualifier out of range (m) = manual integration (+) = signals summed

Data Path : Z:\VOASRV\HPCHEM1\MSVOA X\DATA\VX011620\
Data File : VX014636.D
Acq On : 16 Jan 2020 14:24
Operator : JC/SP
Sample : L1135-03
Misc : 5.0mL/MSVOA X/WATER
ALS Vial : 10 Sample Multiplier: 1

Instrument :
MSVOA_X
Client Sampled :
REP-011420

Quant Time: Jan 17 06:24:05 2020
Quant Method : Z:\VOASRV\HPCHEM1\MSVOA X\METHOD\624X011520W.M
Quant Title : METHOD 624 VOLATILE ORGANIC ANALYSIS
QLast Update : Wed Jan 15 12:41:12 2020
Response via : Initial Calibration

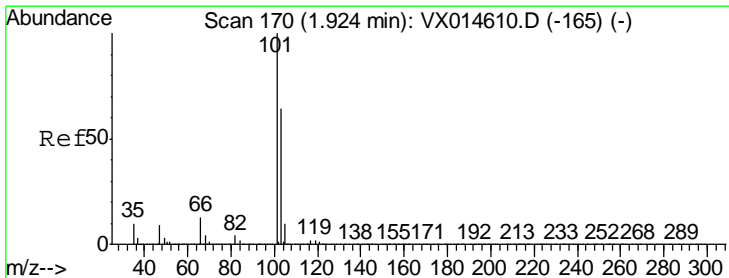
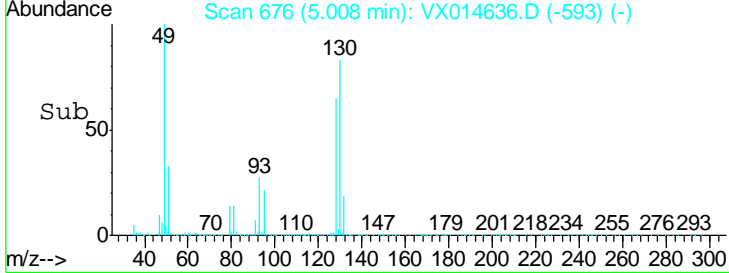
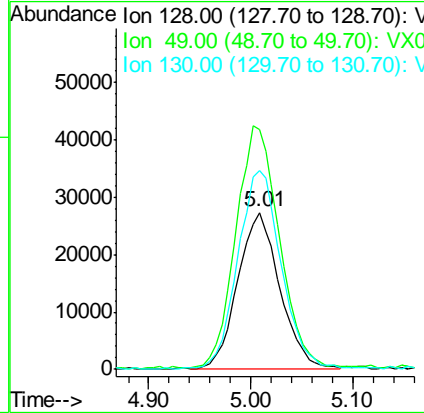




#1
 Bromochloromethane
 Concen: 30.000 ug/l
 RT: 5.01 min Scan# 676
 Delta R.T. 0.01 min
 Lab File: VX014636.D
 Acq: 16 Jan 2020 14:24

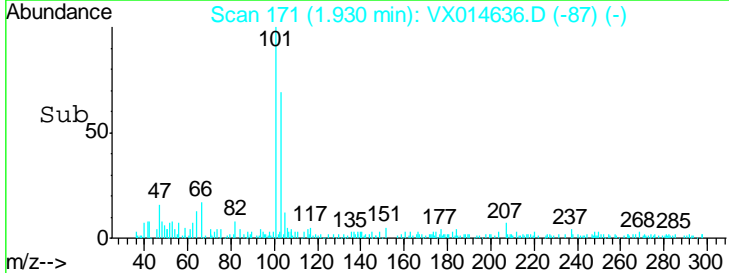
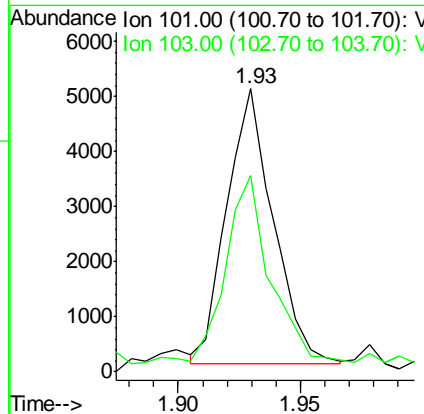
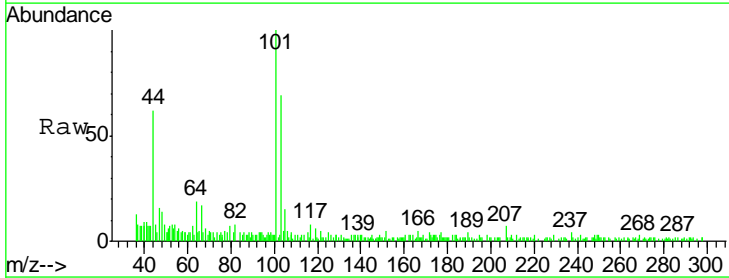
Instrument :
 MSVOA_X
 ClientSampled :
 REP-011420

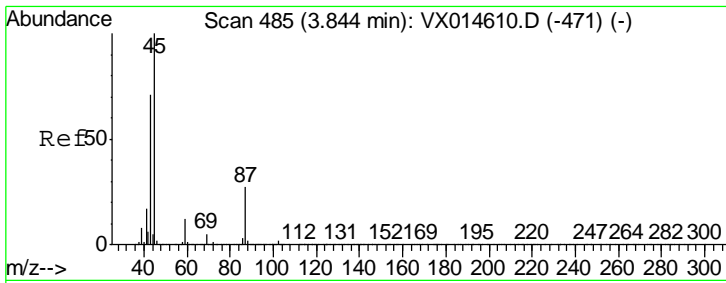
Tgt Ion	Resp	Lower	Upper
128	78321		
49	159.2	0.0	405.0
130	130.8	0.0	321.5



#7
 Trichlorofluoromethane
 Concen: 0.895 ug/l
 RT: 1.93 min Scan# 171
 Delta R.T. 0.01 min
 Lab File: VX014636.D
 Acq: 16 Jan 2020 14:24

Tgt Ion	Resp	Lower	Upper
101	6591		
103	68.0	51.6	77.4

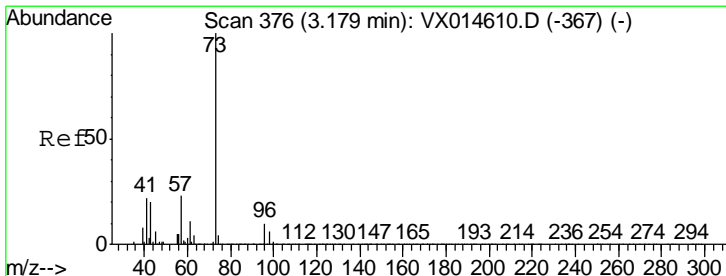
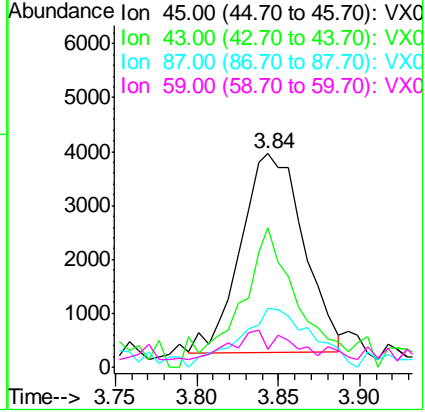
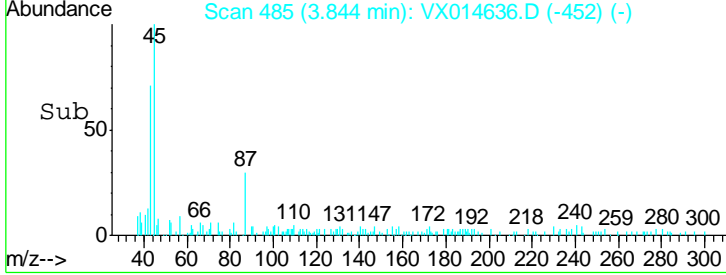
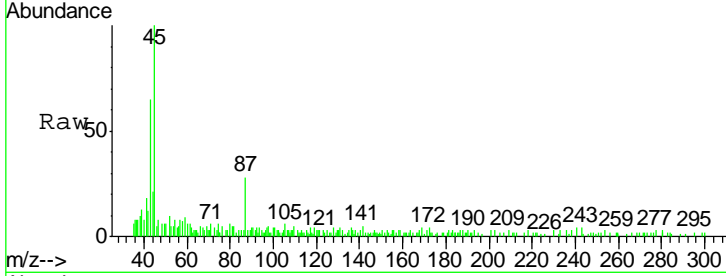




#20
 Diisopropyl ether
 Concen: 0.624 ug/l
 RT: 3.84 min Scan# 485
 Delta R.T. -0.00 min
 Lab File: VX014636.D
 Acq: 16 Jan 2020 14:24

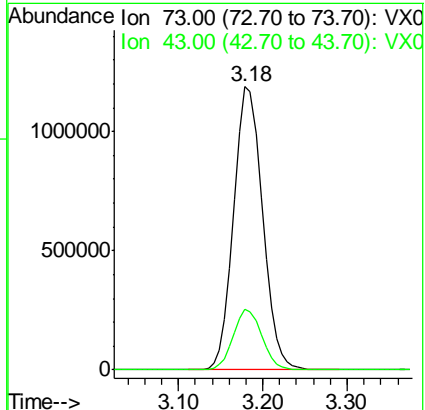
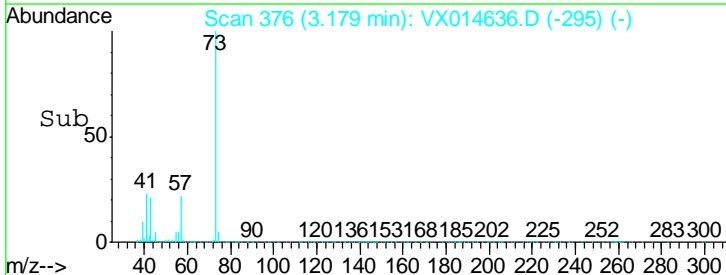
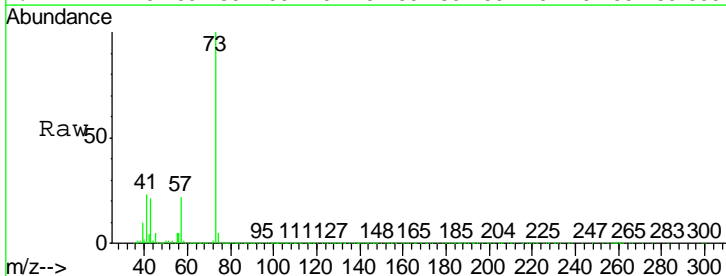
Instrument : MSVOA_X
 ClientSampled : REP-011420

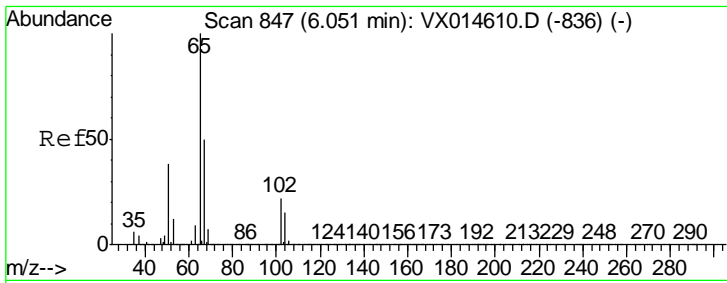
Tgt Ion	Resp	Lower	Upper
45	9903		
43	56.9	55.9	83.9
87	23.9	22.2	33.2
59	5.7	8.6	13.0#



#24
 Methyl tert-Butyl Ether
 Concen: 191.031 ug/l
 RT: 3.18 min Scan# 376
 Delta R.T. -0.01 min
 Lab File: VX014636.D
 Acq: 16 Jan 2020 14:24

Tgt Ion	Resp	Lower	Upper
73	2756409		
43	21.1	16.6	25.0

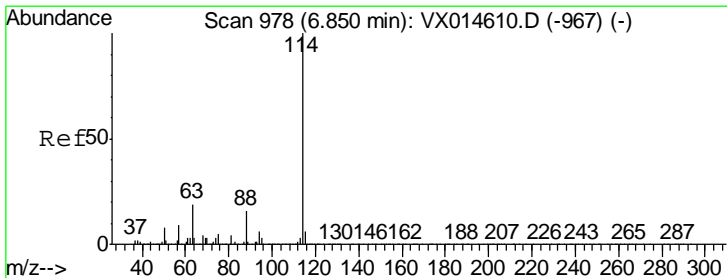
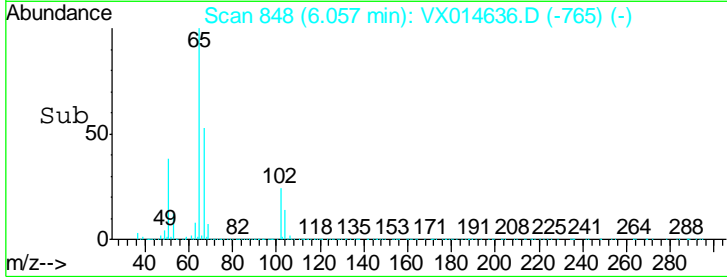
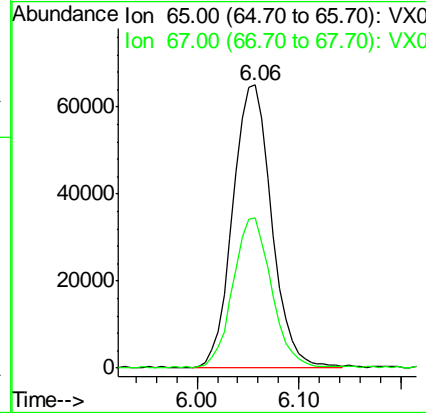
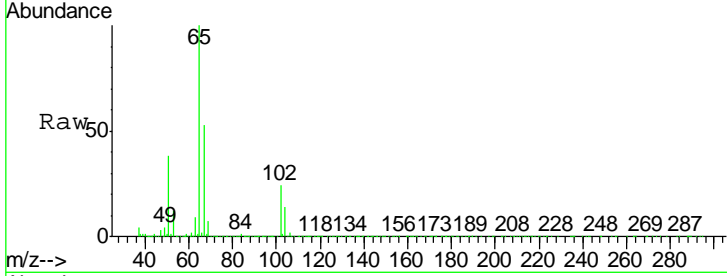




#27
 1,2-Dichloroethane-d4
 Concen: 31.301 ug/l
 RT: 6.06 min Scan# 848
 Delta R.T. 0.01 min
 Lab File: VX014636.D
 Acq: 16 Jan 2020 14:24

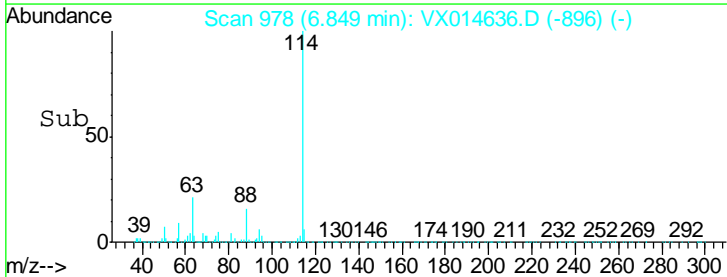
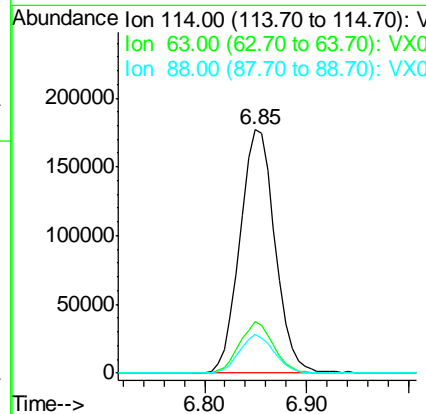
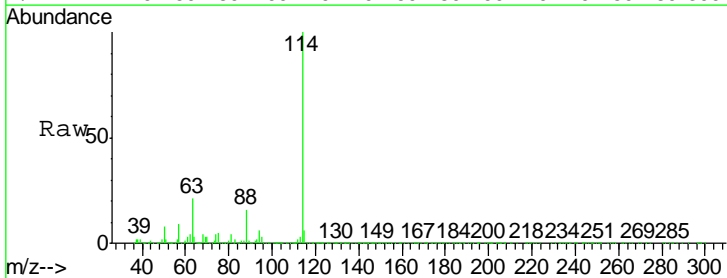
Instrument :
 MSVOA_X
 ClientSampled :
 REP-011420

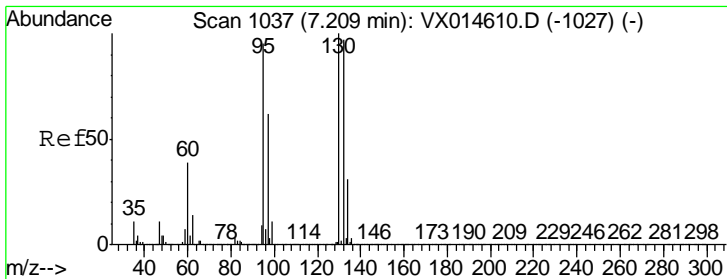
Tgt Ion	Resp	Lower	Upper
65	172313		
67	51.8	43.1	64.7



#28
 1,4-Difluorobenzene
 Concen: 30.000 ug/l
 RT: 6.85 min Scan# 978
 Delta R.T. -0.00 min
 Lab File: VX014636.D
 Acq: 16 Jan 2020 14:24

Tgt Ion	Resp	Lower	Upper
114	421753		
63	20.2	16.1	24.1
88	15.4	12.5	18.7





#37

Trichloroethene

Concen: 7.066 ug/l

RT: 7.20 min Scan# 1036

Delta R.T. -0.01 min

Lab File: VX014636.D

Acq: 16 Jan 2020 14:24

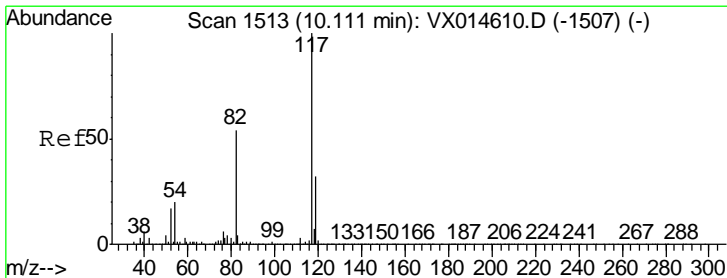
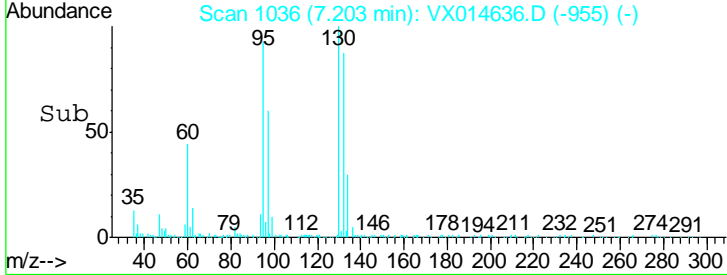
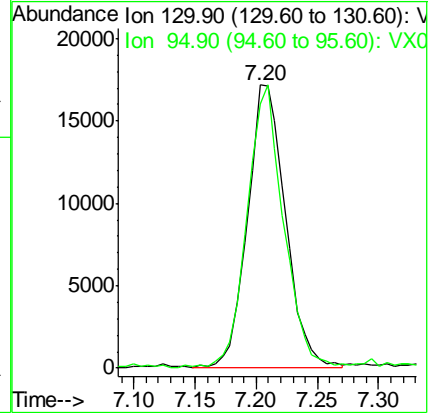
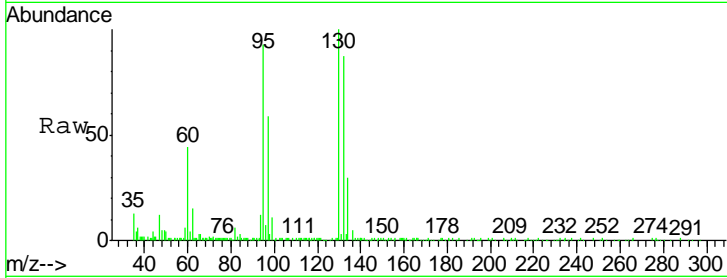
Instrument :
MSVOA_X
ClientSampled :
REP-011420

Tgt Ion:130 Resp: 36978

Ion Ratio Lower Upper

130 100

95 93.1 71.7 107.5



#57

Chlorobenzene-d5

Concen: 30.000 ug/l

RT: 10.11 min Scan# 1513

Delta R.T. -0.00 min

Lab File: VX014636.D

Acq: 16 Jan 2020 14:24

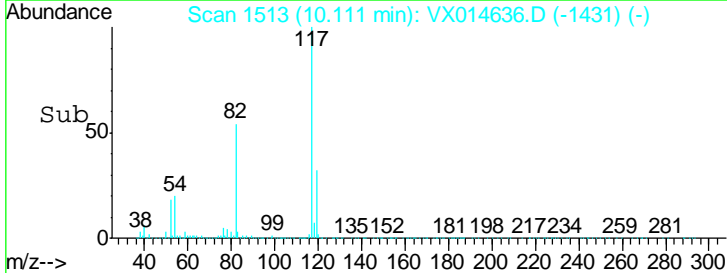
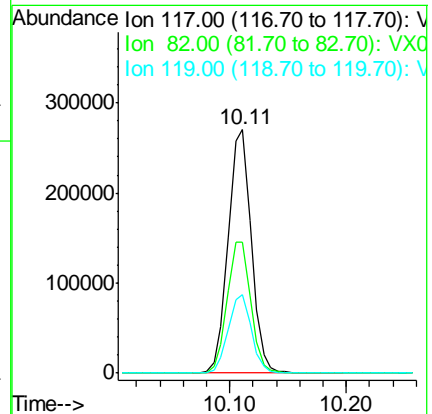
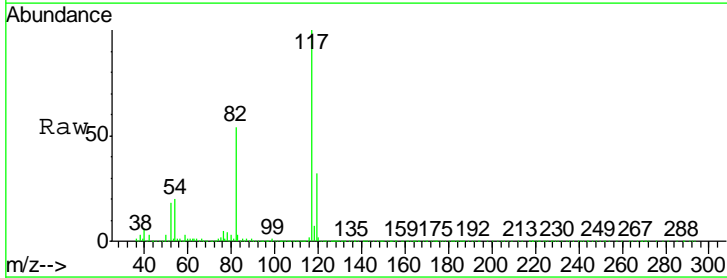
Tgt Ion:117 Resp: 371792

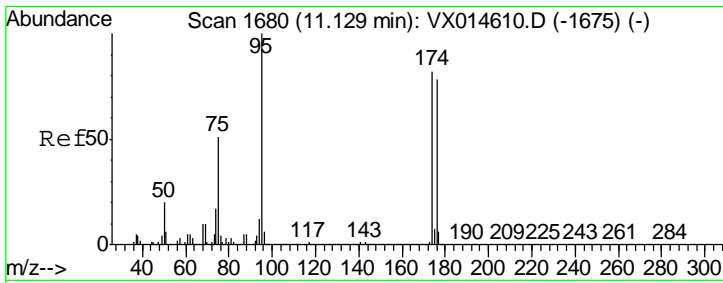
Ion Ratio Lower Upper

117 100

82 54.5 43.8 65.6

119 32.1 25.8 38.6

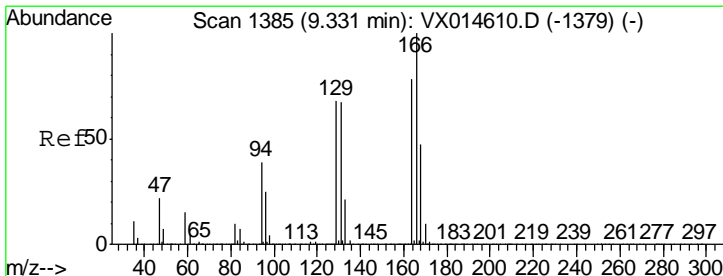
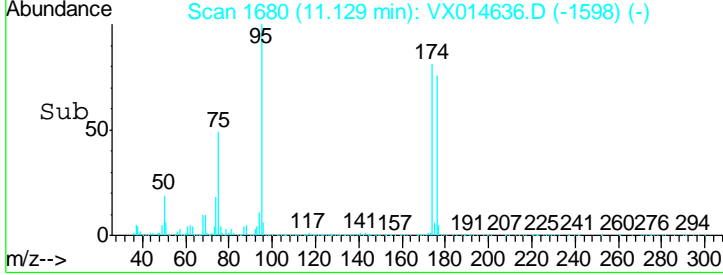
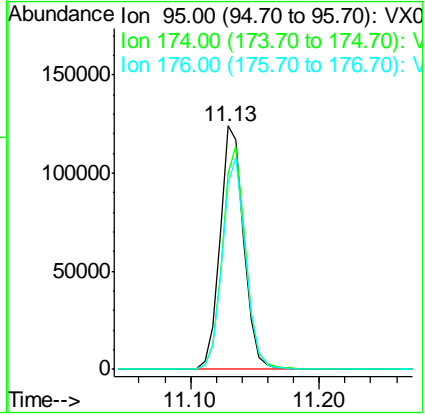
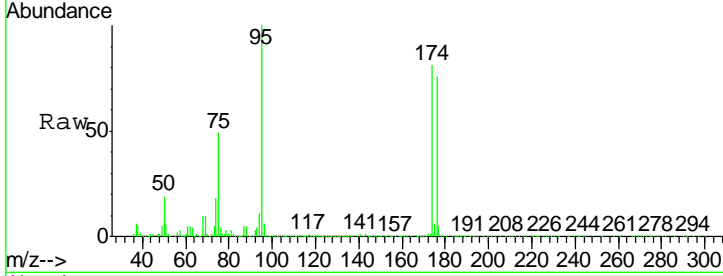




#60
 4-Bromofluorobenzene
 Concen: 27.016 ug/l
 RT: 11.13 min Scan# 1680
 Delta R.T. -0.00 min
 Lab File: VX014636.D
 Acq: 16 Jan 2020 14:24

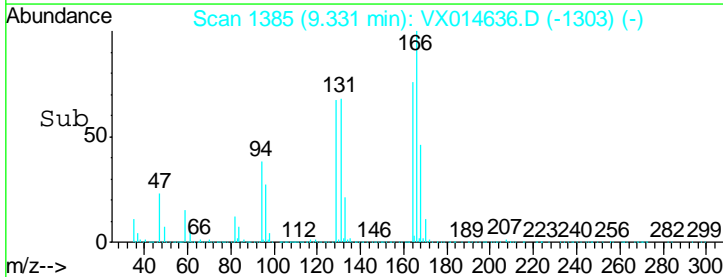
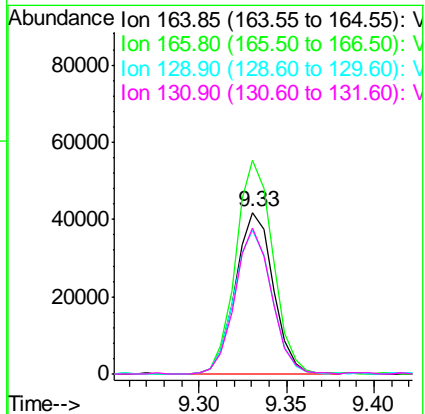
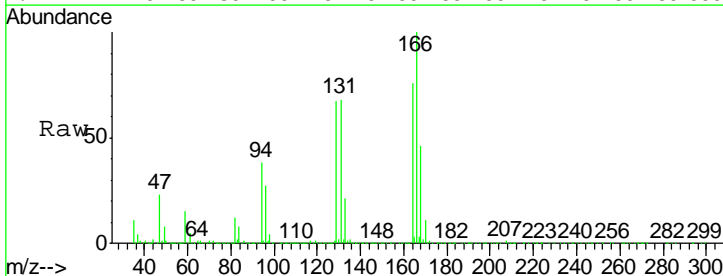
Instrument : MSVOA_X
 ClientSampled : REP-011420

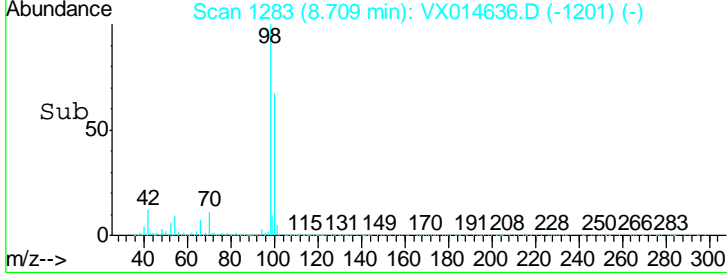
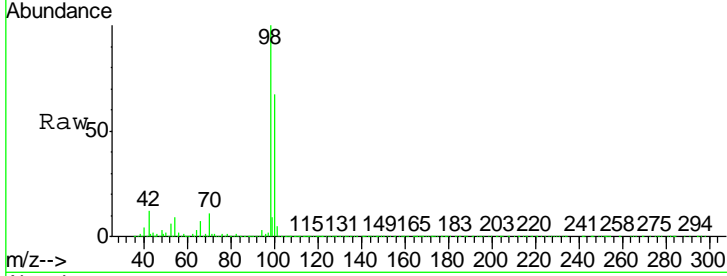
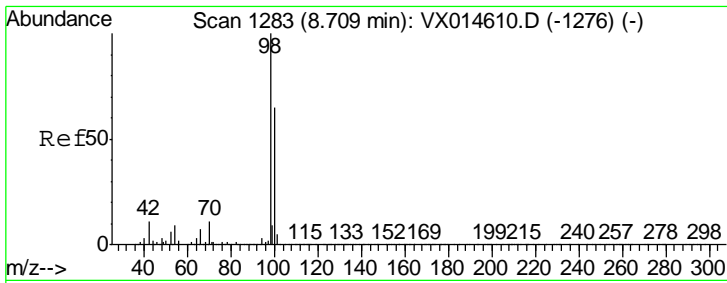
Tgt Ion	Resp	Lower	Upper
95	160728		
174	89.4	70.2	105.2
176	85.6	68.3	102.5



#61
 Tetrachloroethene
 Concen: 11.419 ug/l
 RT: 9.33 min Scan# 1385
 Delta R.T. -0.00 min
 Lab File: VX014636.D
 Acq: 16 Jan 2020 14:24

Tgt Ion	Resp	Lower	Upper
164	62751		
166	132.2	104.2	156.2
129	88.6	71.6	107.4
131	90.2	71.7	107.5





#63
 Toluene-d8
 Concen: 29.978 ug/l
 RT: 8.71 min Scan# 1283
 Delta R.T. -0.00 min
 Lab File: VX014636.D
 Acq: 16 Jan 2020 14:24

Tot Ion: 98 Resp: 503435
 Ion Ratio Lower Upper
 98 100
 100 65.1 52.2 78.2

Instrument :
 MSVOA_X
 ClientSampleId :
 REP-011420

