

Data Path : Z:\VOASRV\HPCHEM1\MSVOA X\DATA\VX011719\
 Data File : VX007113.D
 Acq On : 18 Jan 2019 02:55
 Operator : JC/SP
 Sample : K1167-06
 Misc : 5.0mL/MSVOA X/WATER
 ALS Vial : 39 Sample Multiplier: 1

Instrument :
 MSVOA_X
 ClientSampled :
 D-9

Quant Time: Jan 18 05:09:01 2019
 Quant Method : Z:\VOASRV\HPCHEM1\MSVOA_X\METHOD\82X010819W.M
 Quant Title : SW846 8260
 QLast Update : Tue Jan 08 14:06:59 2019
 Response via : Initial Calibration

Internal Standards	R.T.	QIon	Response	Conc	Units	Dev(Min)
1) Pentafluorobenzene	5.67	168	568557	50.00	ug/l	0.00
34) 1,4-Difluorobenzene	6.86	114	873128	50.00	ug/l	0.00
63) Chlorobenzene-d5	10.12	117	847484	50.00	ug/l	0.00
72) 1,4-Dichlorobenzene-d4	12.08	152	407699	50.00	ug/l	0.00

System Monitoring Compounds

33) 1,2-Dichloroethane-d4	6.07	65	301561	50.75	ug/l	0.00
Spiked Amount	50.000		Recovery	=	101.50%	
35) Dibromofluoromethane	5.51	113	269394	48.18	ug/l	0.00
Spiked Amount	50.000		Recovery	=	96.36%	
50) Toluene-d8	8.71	98	1065779	52.07	ug/l	0.00
Spiked Amount	50.000		Recovery	=	104.14%	
62) 4-Bromofluorobenzene	11.13	95	383499	53.75	ug/l	0.00
Spiked Amount	50.000		Recovery	=	107.50%	

Target Compounds

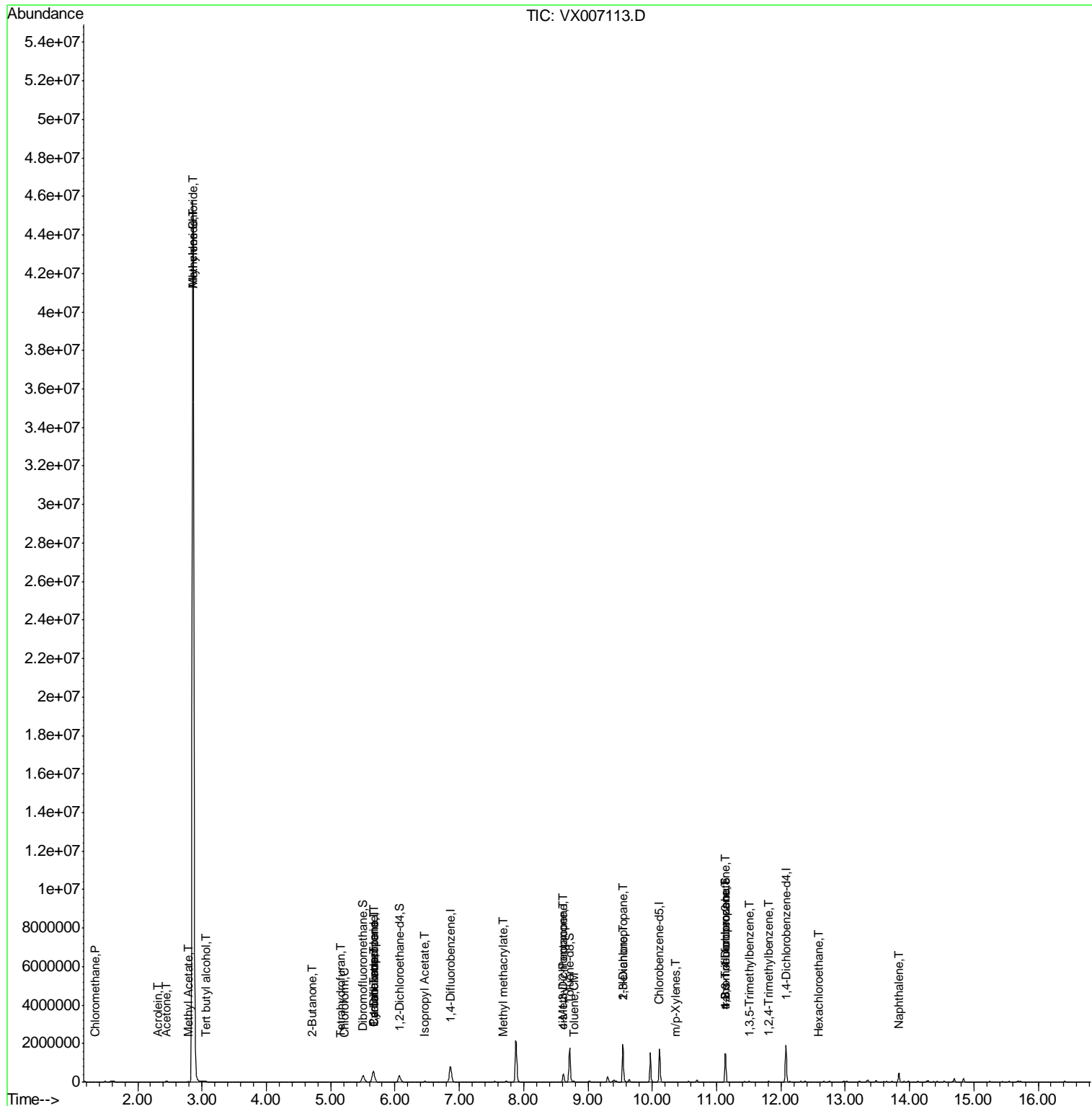
						Qvalue
3) Chloromethane	1.33	50	2456	0.452	ug/l #	88
11) Tert butyl alcohol	3.07	59	2968	2.117	ug/l #	92
13) Acrolein	2.31	56	1682	5.832	ug/l #	38
14) Allyl chloride	2.85	41	828822	92.549	ug/l #	26
16) Acetone	2.45	43	32107	10.930	ug/l	93
18) Methyl Acetate	2.78	43	12450	1.464	ug/l #	88
20) Methylene Chloride	2.85	84	19201996	3475.603	ug/l #	73
25) 2-Butanone	4.71	43	7753	1.845	ug/l	98
29) Tetrahydrofuran	5.17	42	1888	0.691	ug/l #	60
30) Chloroform	5.21	83	2624	0.266	ug/l	96
31) Cyclohexane	5.67	56	9378	1.119	ug/l #	1
36) 1,1-Dichloropropene	5.67	75	36997	4.874	ug/l #	48
38) Carbon Tetrachloride	5.67	117	49950	6.540	ug/l #	16
43) Isopropyl Acetate	6.46	43	26881	2.094	ug/l	95
48) Methyl methacrylate	7.68	41	13509	2.049	ug/l #	11
49) 1,4-Dioxane	7.75	88	127	Below Cal	#	27
51) 4-Methyl-2-Pentanone	8.62	43	135534	16.428	ug/l #	49
52) Toluene	8.79	92	3770	0.253	ug/l	82
54) cis-1,3-Dichloropropene	8.62	75	68135	7.987	ug/l #	64
57) 1,3-Dichloropropane	9.54	76	16036	1.643	ug/l #	44
59) 2-Hexanone	9.54	43	216454	34.429	ug/l #	51
68) m/p-Xylenes	10.35	106	3762	0.313	ug/l	98
76) 1,2,3-Trichloropropane	11.13	75	182607	22.102	ug/l #	40
80) 1,3,5-Trimethylbenzene	11.51	105	9659	0.402	ug/l	95
81) trans-1,4-Dichloro-2-buten	11.13	75	182607	65.438	ug/l #	10
84) 1,2,4-Trimethylbenzene	11.80	105	25003	1.035	ug/l	100
90) Hexachloroethane	12.58	117	1382	3.227	ug/l #	6
95) Naphthalene	13.83	128	288835	9.833	ug/l	99

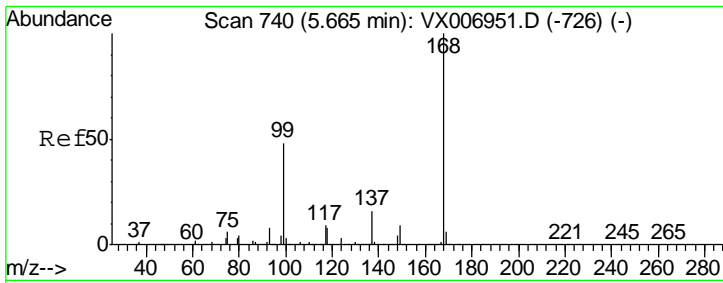
(#) = qualifier out of range (m) = manual integration (+) = signals summed

Data Path : Z:\VOASRV\HPCHEM1\MSVOA X\DATA\VX011719\
 Data File : VX007113.D
 Acq On : 18 Jan 2019 02:55
 Operator : JC/SP
 Sample : K1167-06
 Misc : 5.0mL/MSVOA X/WATER
 ALS Vial : 39 Sample Multiplier: 1

Instrument :
 MSVOA_X
 Client Sampled :
 D-9

Quant Time: Jan 18 05:09:01 2019
 Quant Method : Z:\VOASRV\HPCHEM1\MSVOA_X\METHOD\82X010819W.M
 Quant Title : SW846 8260
 QLast Update : Tue Jan 08 14:06:59 2019
 Response via : Initial Calibration

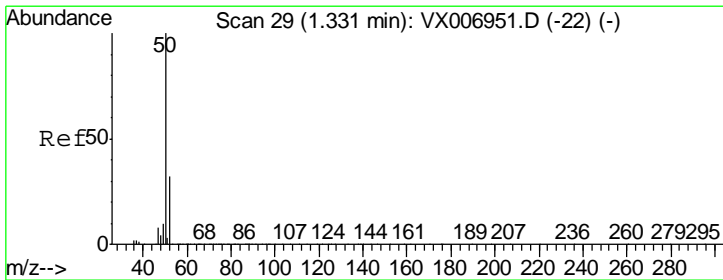
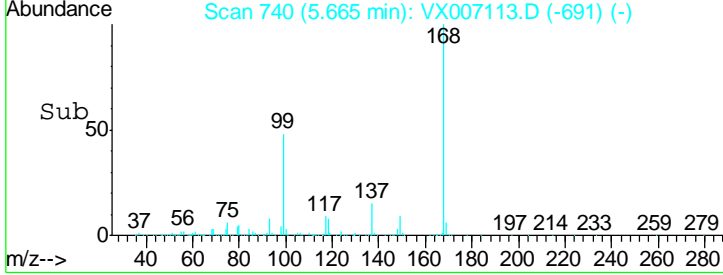
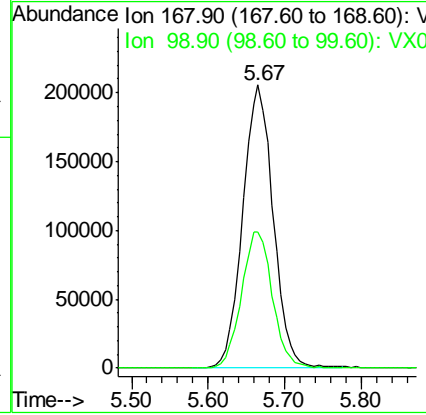
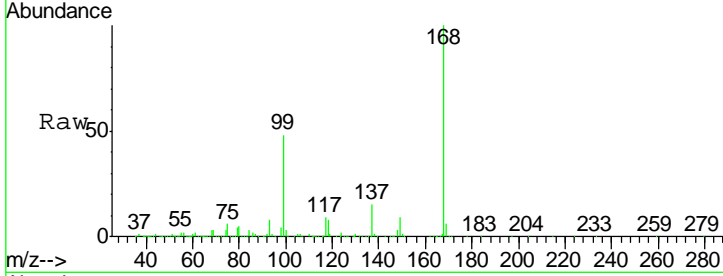




#1
 Pentafluorobenzene
 Concen: 50.000 ug/l
 RT: 5.67 min Scan# 740
 Delta R.T. 0.00 min
 Lab File: VX007113.D
 Acq: 18 Jan 2019 02:55

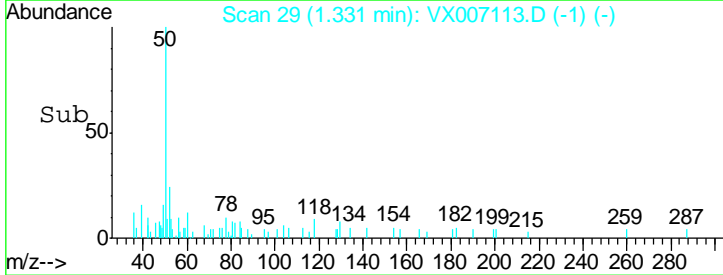
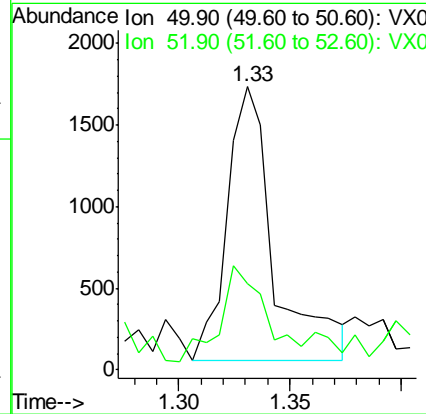
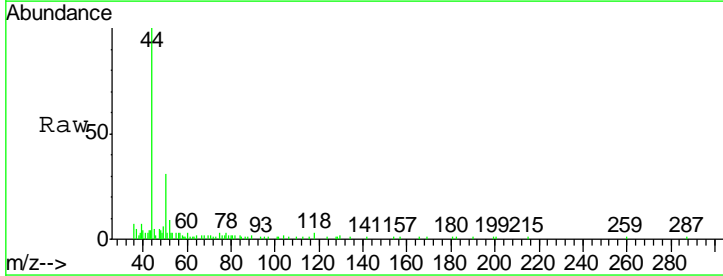
Instrument : MSVOA_X
 ClientSampled : D-9

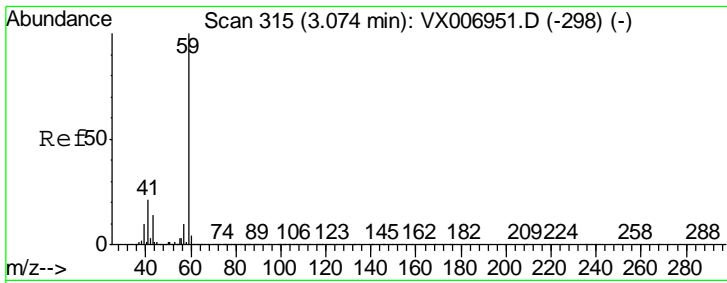
Tgt Ion	Resp	Lower	Upper
168	100		
99	47.9	41.8	62.8



#3
 Chloromethane
 Concen: 0.452 ug/l
 RT: 1.33 min Scan# 29
 Delta R.T. 0.00 min
 Lab File: VX007113.D
 Acq: 18 Jan 2019 02:55

Tgt Ion	Resp	Lower	Upper
50	100		
52	25.3	25.4	38.2#

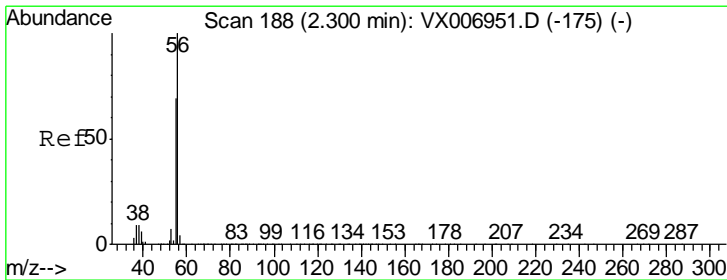
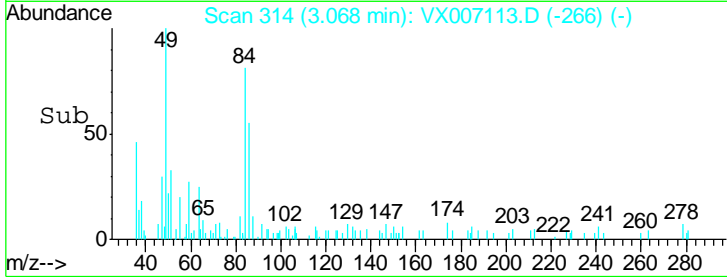
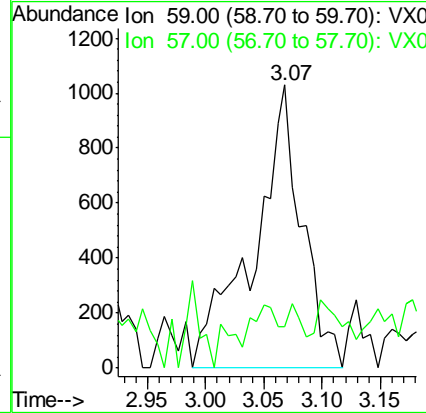
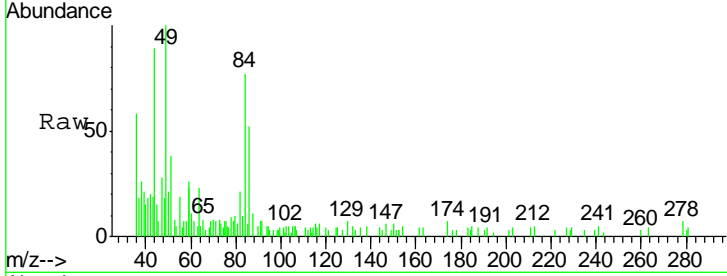




#11
 Tert butyl alcohol
 Concen: 2.117 ug/l
 RT: 3.07 min Scan# 314
 Delta R.T. -0.01 min
 Lab File: VX007113.D
 Acq: 18 Jan 2019 02:55

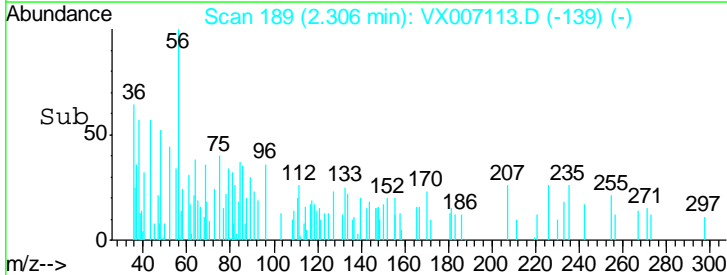
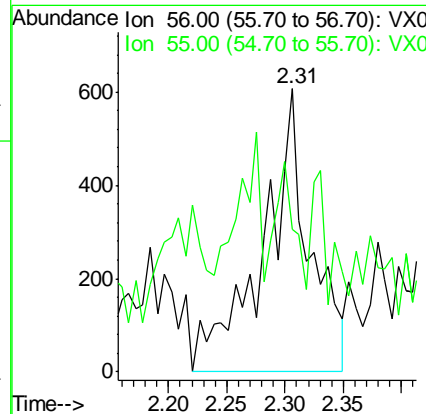
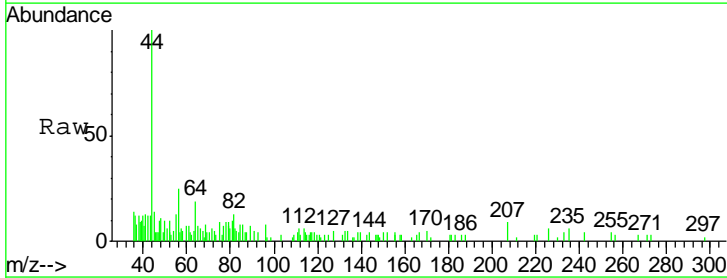
Instrument :
 MSVOA_X
 ClientSampled :
 D-9

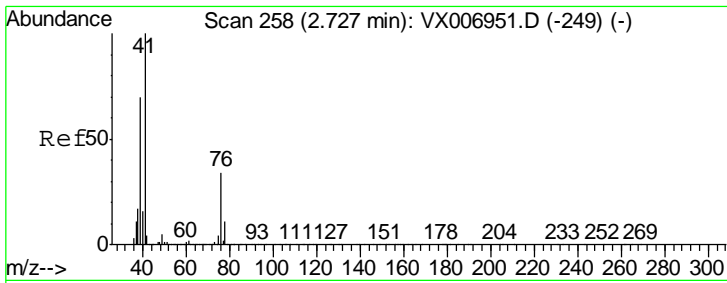
Tgt Ion: 59 Resp: 2968
 Ion Ratio Lower Upper
 59 100
 57 7.5 8.5 12.7#



#13
 Acrolein
 Concen: 5.832 ug/l
 RT: 2.31 min Scan# 189
 Delta R.T. 0.01 min
 Lab File: VX007113.D
 Acq: 18 Jan 2019 02:55

Tgt Ion: 56 Resp: 1682
 Ion Ratio Lower Upper
 56 100
 55 20.9 58.2 87.4#

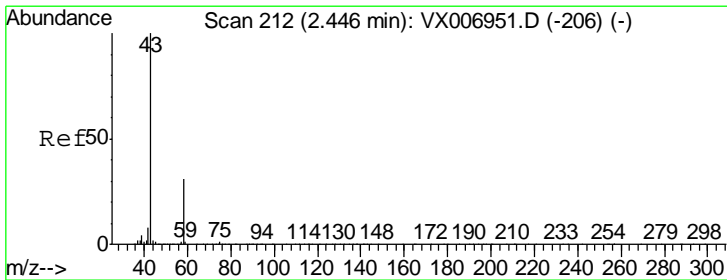
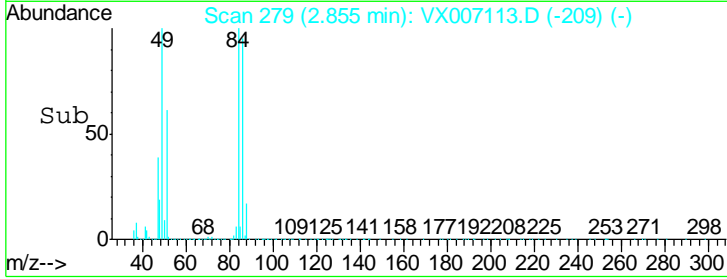
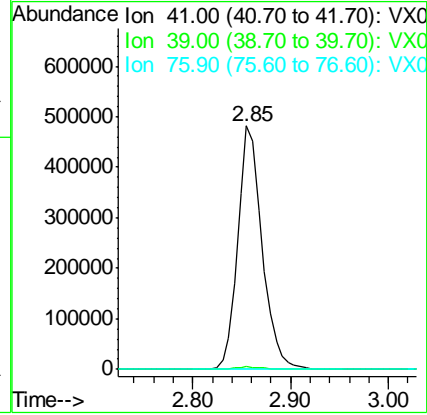
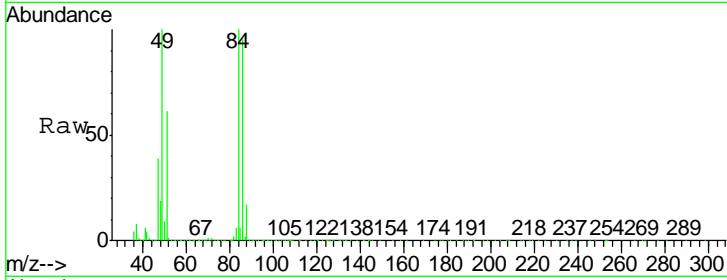




#14
 Allvl chloride
 Concen: 92.549 ug/l
 RT: 2.85 min Scan# 279
 Delta R.T. 0.13 min
 Lab File: VX007113.D
 Acq: 18 Jan 2019 02:55

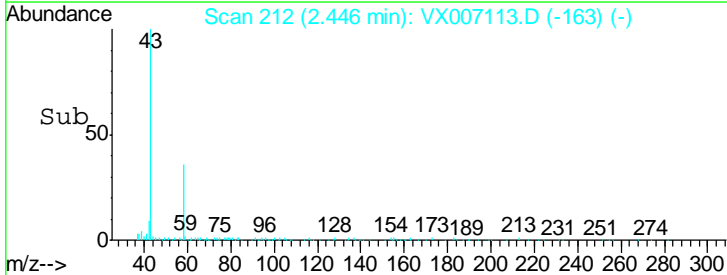
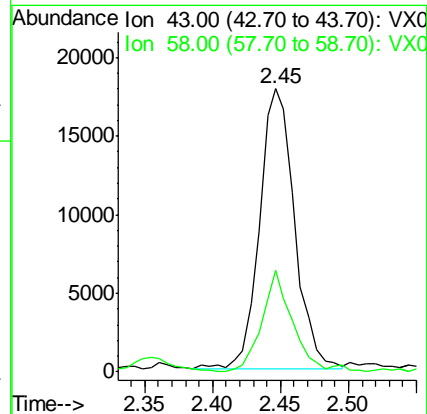
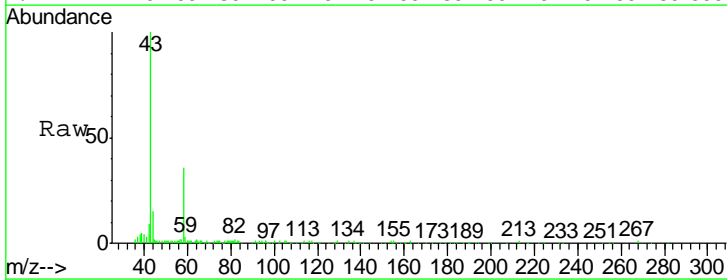
Instrument :
 MSVOA_X
 ClientSampled :
 D-9

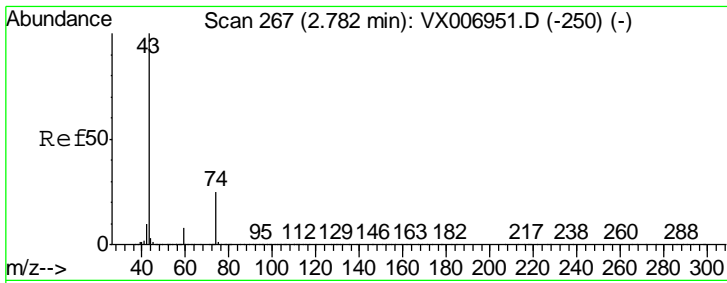
Tgt Ion	Resp	Lower	Upper
41	100		
39	1.2	53.6	80.4#
76	0.1	27.4	41.2#



#16
 Acetone
 Concen: 10.930 ug/l
 RT: 2.45 min Scan# 212
 Delta R.T. 0.00 min
 Lab File: VX007113.D
 Acq: 18 Jan 2019 02:55

Tgt Ion	Resp	Lower	Upper
43	100		
58	35.2	25.0	37.6

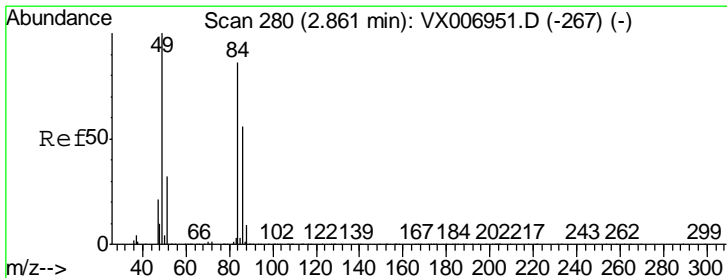
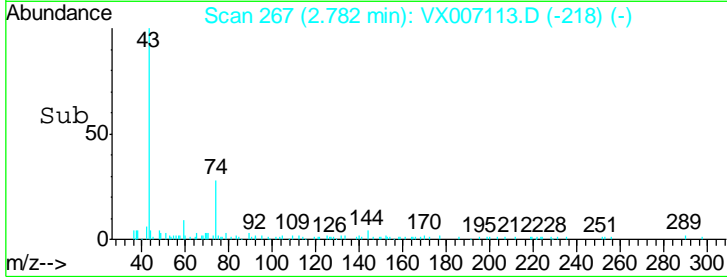
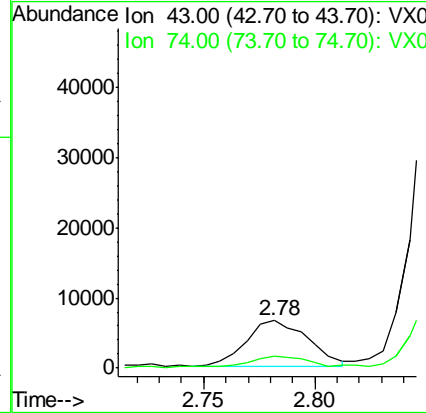
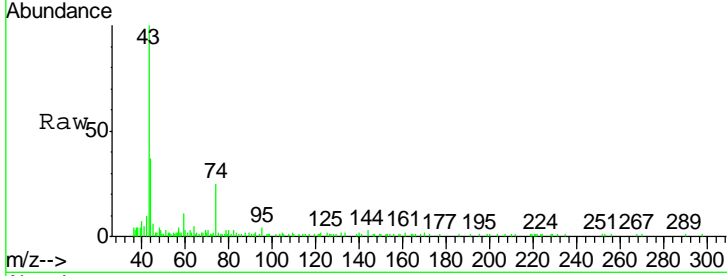




#18
 Methyl Acetate
 Concen: 1.464 ug/l
 RT: 2.78 min Scan# 267
 Delta R.T. 0.00 min
 Lab File: VX007113.D
 Acq: 18 Jan 2019 02:55

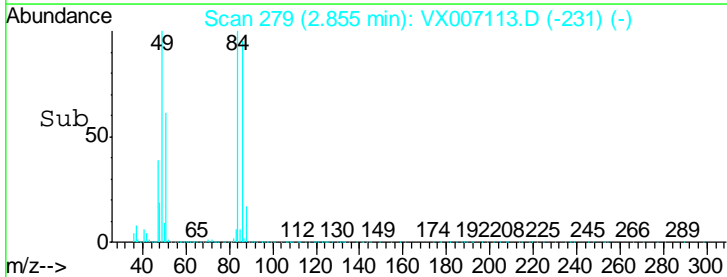
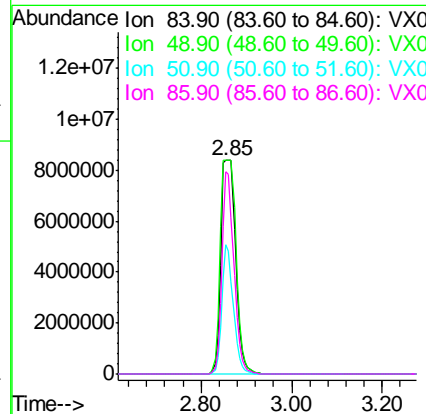
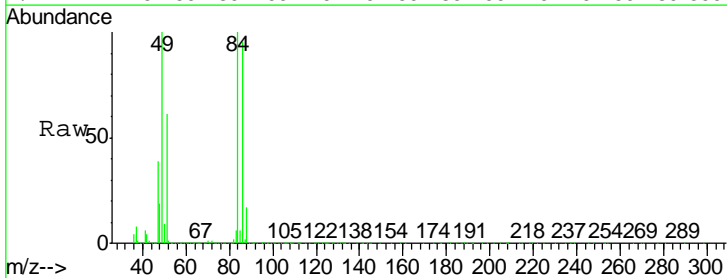
Instrument : MSVOA_X
 ClientSampleID : D-9

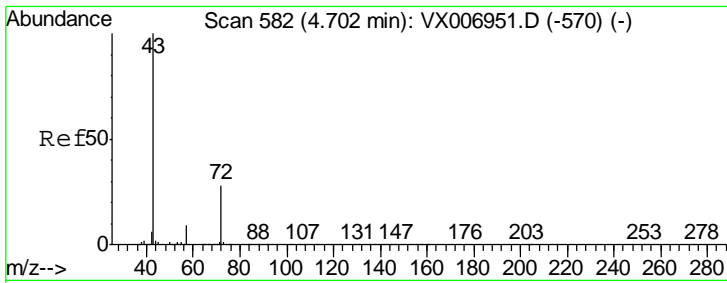
Tgt Ion	Resp	Lower	Upper
43	12450		
74	29.2	18.6	28.0#



#20
 Methylene Chloride
 Concen: 3475.603 ug/l
 RT: 2.85 min Scan# 279
 Delta R.T. -0.01 min
 Lab File: VX007113.D
 Acq: 18 Jan 2019 02:55

Tgt Ion	Resp	Lower	Upper
84	19201996		
49	100.0	91.8	137.6
51	60.6	28.5	42.7#
86	94.8	50.2	75.2#

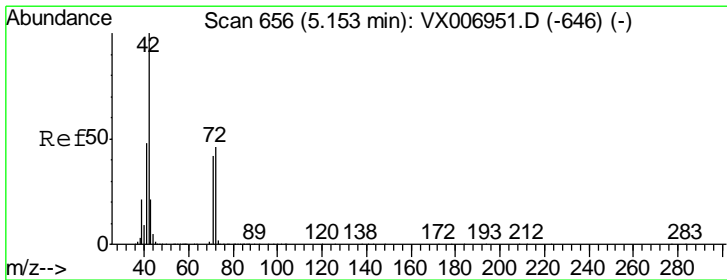
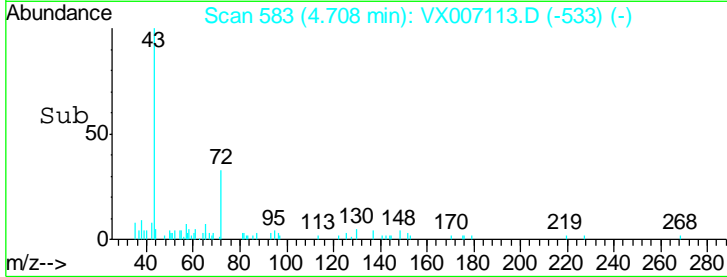
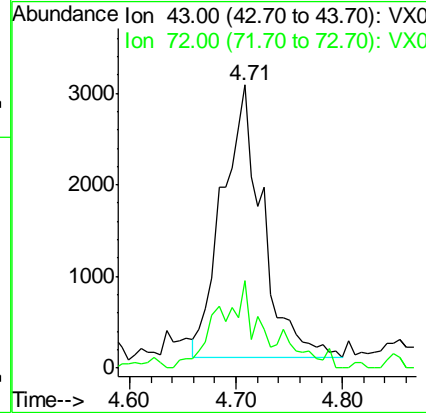
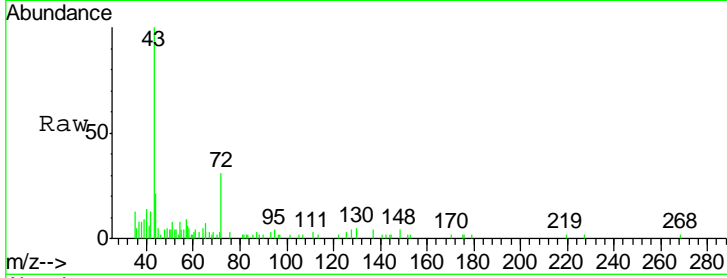




#25
 2-Butanone
 Concen: 1.845 ug/l
 RT: 4.71 min Scan# 583
 Delta R.T. 0.01 min
 Lab File: VX007113.D
 Acq: 18 Jan 2019 02:55

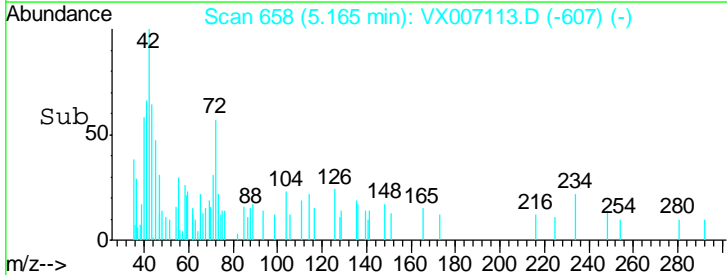
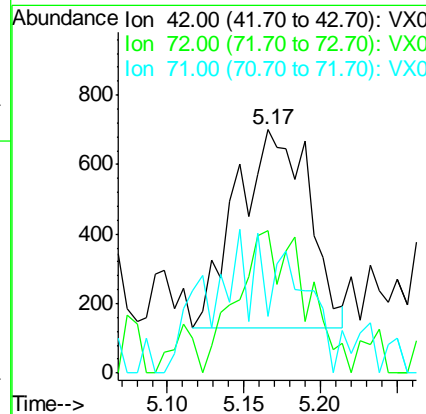
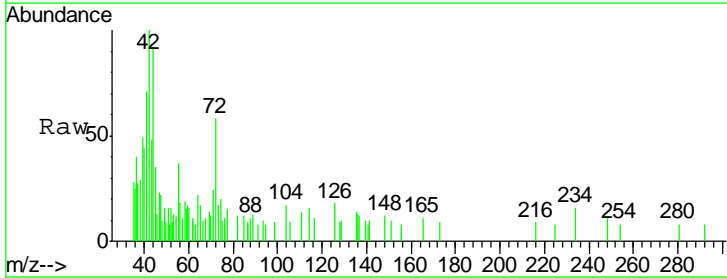
Instrument :
 MSVOA_X
 ClientSampled :
 D-9

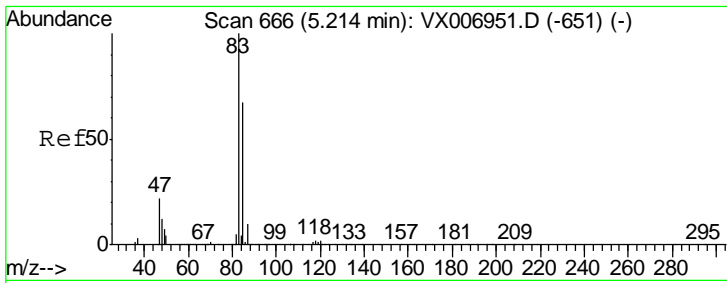
Tgt Ion	Resp	Lower	Upper
43	7753		
72	28.9	22.4	33.6



#29
 Tetrahydrofuran
 Concen: 0.691 ug/l
 RT: 5.17 min Scan# 658
 Delta R.T. 0.01 min
 Lab File: VX007113.D
 Acq: 18 Jan 2019 02:55

Tgt Ion	Resp	Lower	Upper
42	1888		
72	66.9	38.9	58.3#
71	10.3	36.2	54.4#

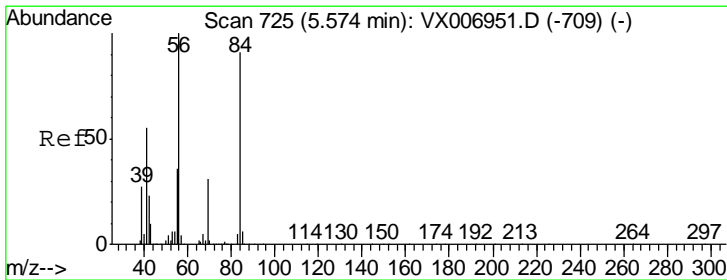
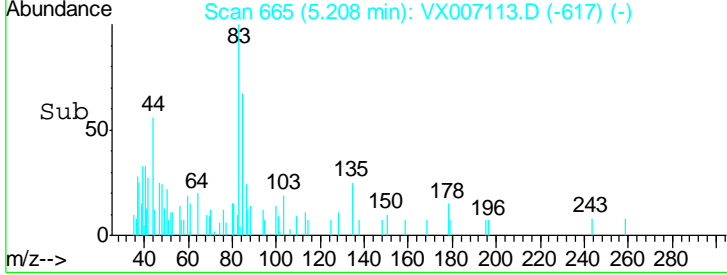
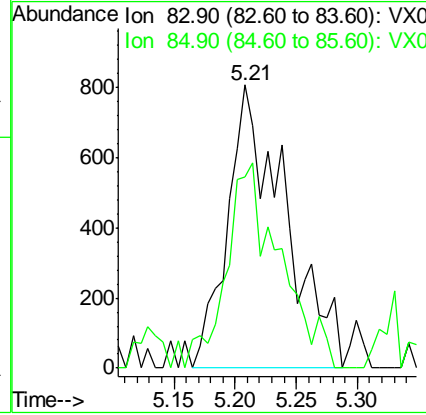
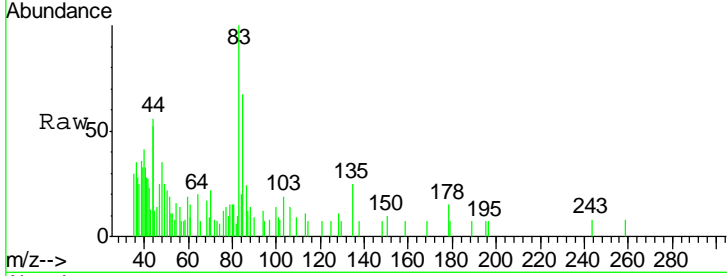




#30
 Chloroform
 Concen: 0.266 ug/l
 RT: 5.21 min Scan# 665
 Delta R.T. -0.01 min
 Lab File: VX007113.D
 Acq: 18 Jan 2019 02:55

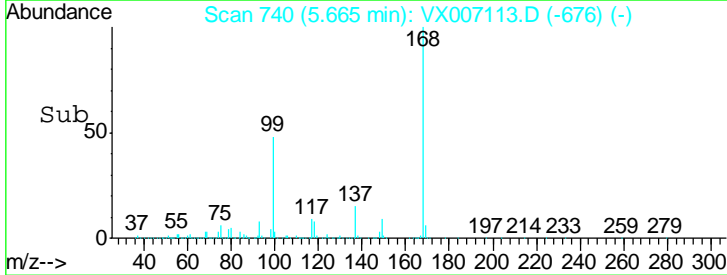
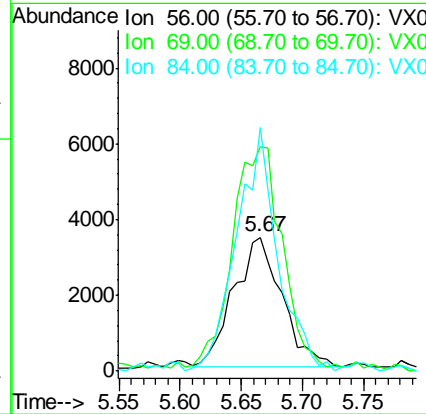
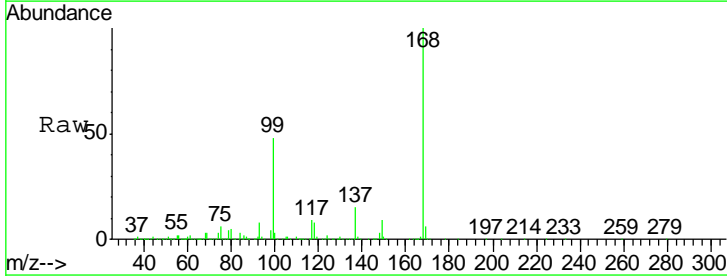
Instrument : MSVOA_X
 ClientSampled : D-9

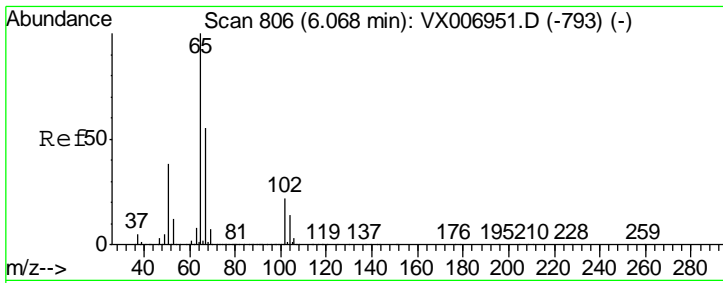
Tgt Ion	Resp	Lower	Upper
83	100		
85	67.5	51.2	76.8



#31
 Cyclohexane
 Concen: 1.119 ug/l
 RT: 5.67 min Scan# 740
 Delta R.T. 0.09 min
 Lab File: VX007113.D
 Acq: 18 Jan 2019 02:55

Tgt Ion	Resp	Lower	Upper
56	100		
69	174.6	24.4	36.6#
84	191.0	70.0	105.0#

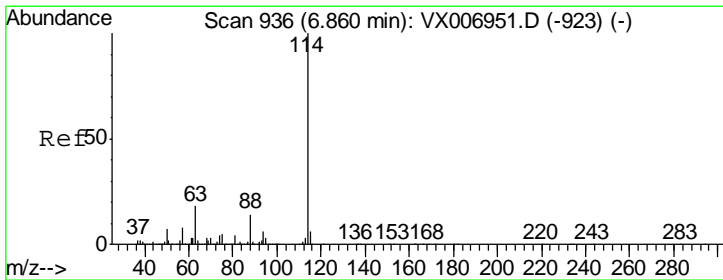
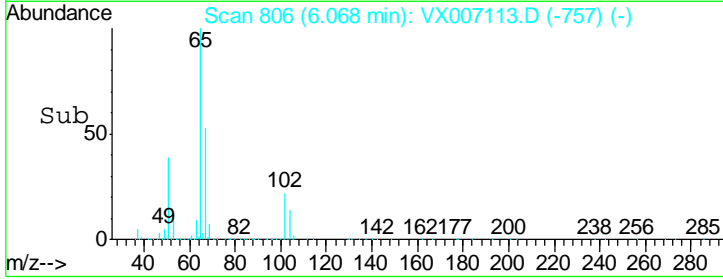
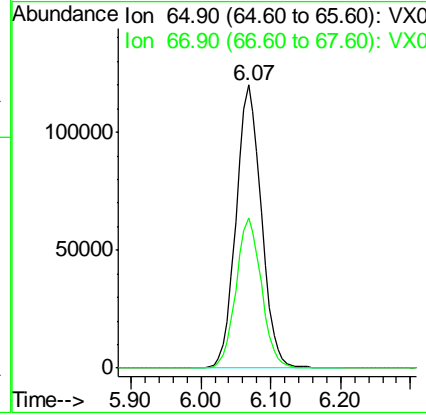
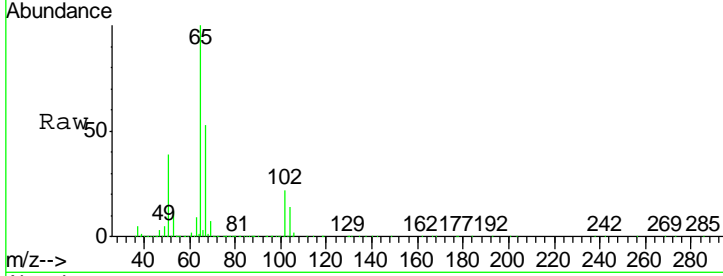




#33
 1,2-Dichloroethane-d4
 Concen: 50.752 ug/l
 RT: 6.07 min Scan# 806
 Delta R.T. 0.00 min
 Lab File: VX007113.D
 Acq: 18 Jan 2019 02:55

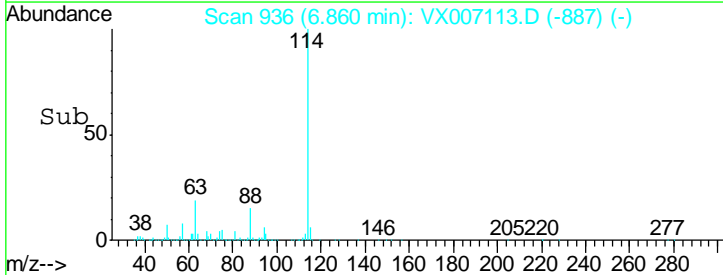
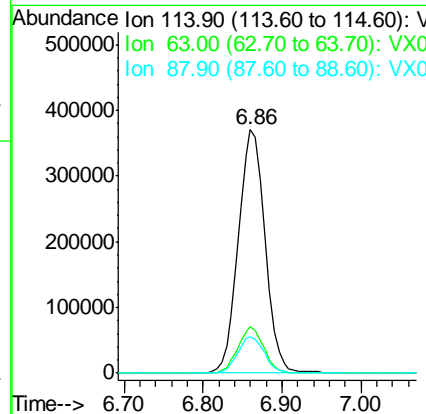
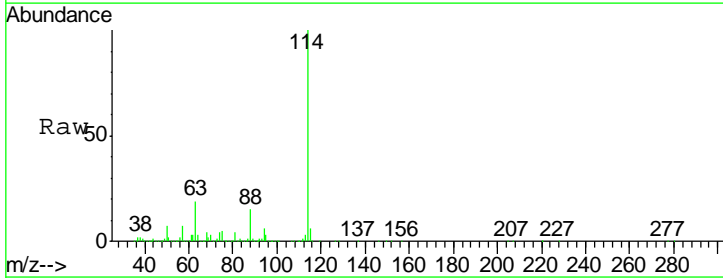
Instrument : MSVOA_X
 ClientSampled : D-9

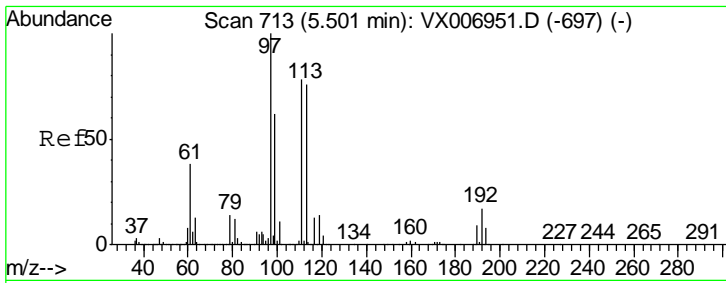
Tgt Ion	Resp	Lower	Upper
65	301561		
67	53.2	0.0	105.0



#34
 1,4-Difluorobenzene
 Concen: 50.000 ug/l
 RT: 6.86 min Scan# 936
 Delta R.T. 0.00 min
 Lab File: VX007113.D
 Acq: 18 Jan 2019 02:55

Tgt Ion	Resp	Lower	Upper
114	873128		
63	18.9	0.0	34.8
88	14.6	0.0	28.8

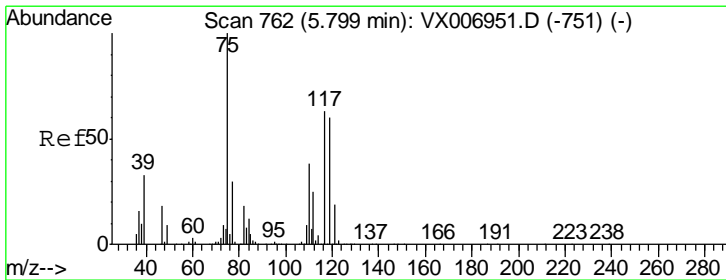
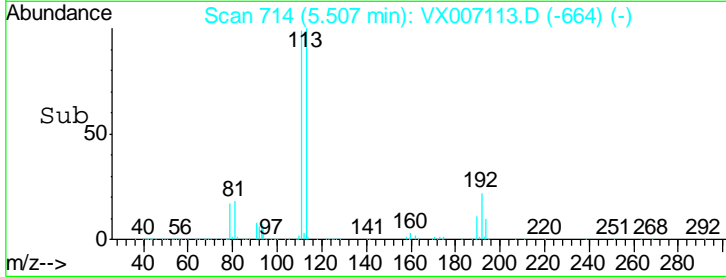
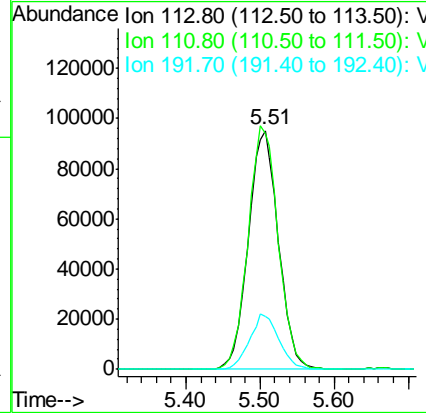
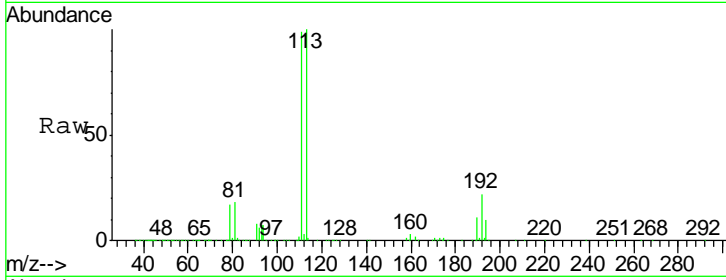




#35
 Dibromofluoromethane
 Concen: 48.180 ug/l
 RT: 5.51 min Scan# 714
 Delta R.T. 0.01 min
 Lab File: VX007113.D
 Acq: 18 Jan 2019 02:55

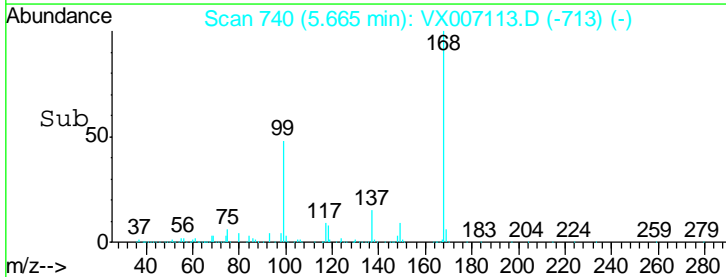
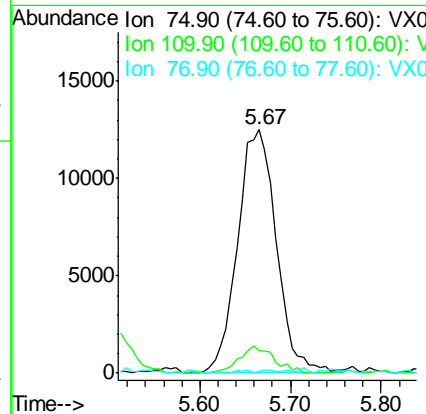
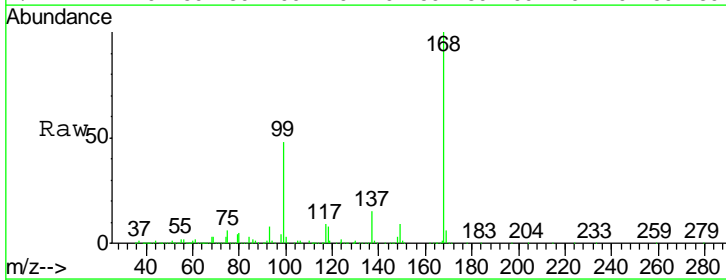
Instrument :
 MSVOA_X
 ClientSampled :
 D-9

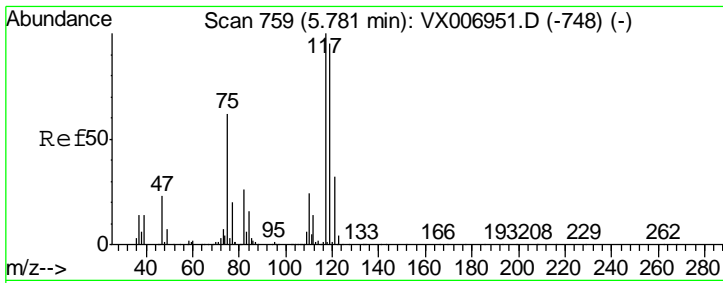
Tgt Ion	Resp	Lower	Upper
113	269394		
111	102.0	81.6	122.4
192	22.5	16.7	25.1



#36
 1,1-Dichloropropene
 Concen: 4.874 ug/l
 RT: 5.67 min Scan# 740
 Delta R.T. -0.13 min
 Lab File: VX007113.D
 Acq: 18 Jan 2019 02:55

Tgt Ion	Resp	Lower	Upper
75	36997		
110	9.9	20.2	60.5#
77	0.5	24.8	37.2#

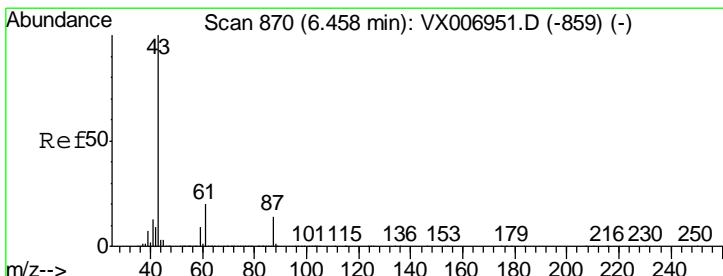
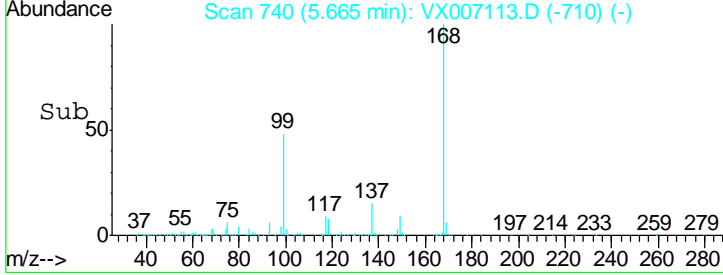
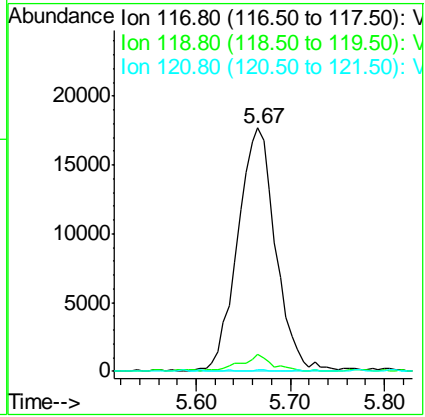
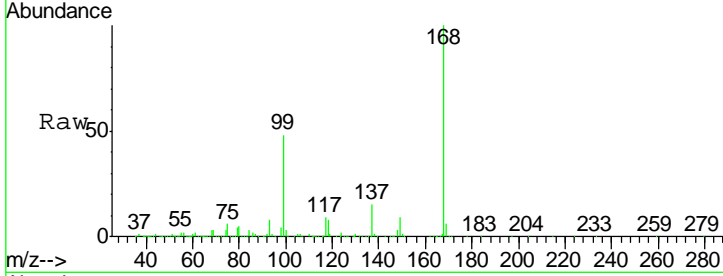




#38
 Carbon Tetrachloride
 Concen: 6.540 ug/l
 RT: 5.67 min Scan# 740
 Delta R.T. -0.12 min
 Lab File: VX007113.D
 Acq: 18 Jan 2019 02:55

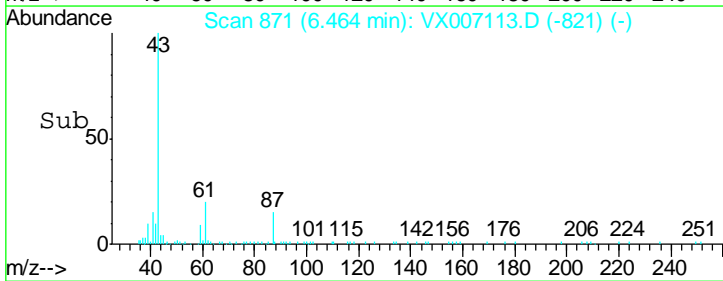
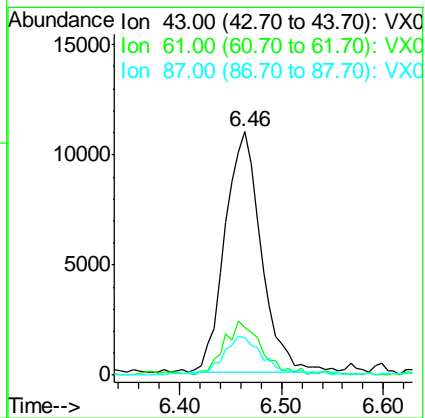
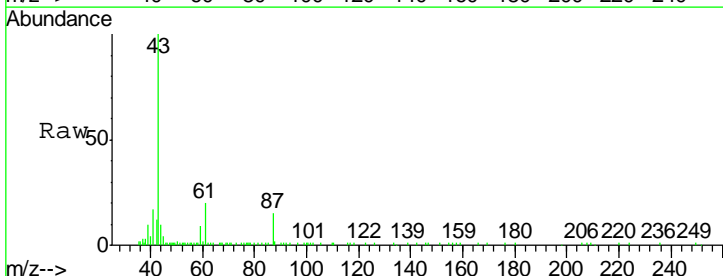
Instrument : MSVOA_X
 ClientSampled : D-9

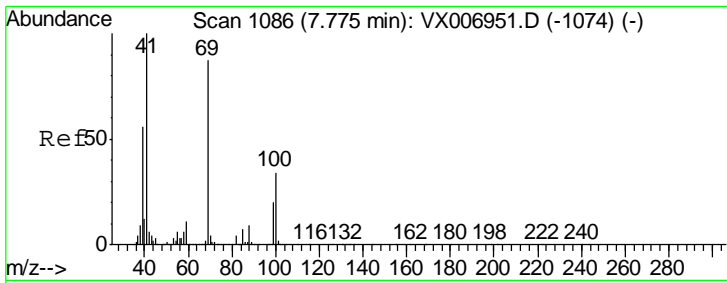
Tgt Ion	Resp	Lower	Upper
117	49950		
119	6.4	79.4	119.2#
121	0.6	24.0	36.0#



#43
 Isopropyl Acetate
 Concen: 2.094 ug/l
 RT: 6.46 min Scan# 871
 Delta R.T. 0.01 min
 Lab File: VX007113.D
 Acq: 18 Jan 2019 02:55

Tgt Ion	Resp	Lower	Upper
43	26881		
61	23.1	16.8	25.2
87	17.9	12.4	18.6

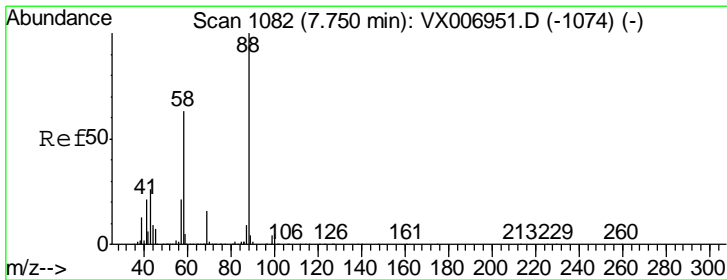
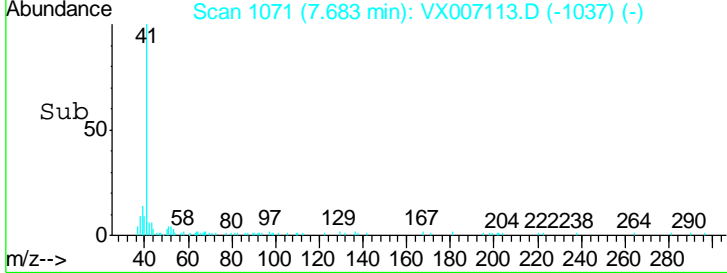
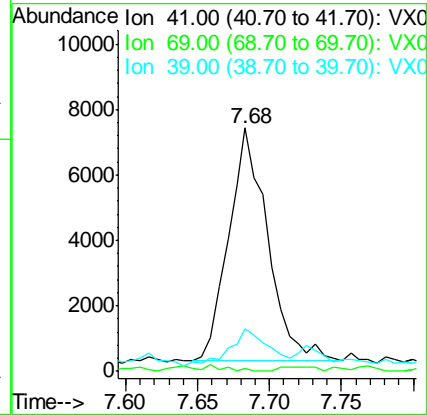
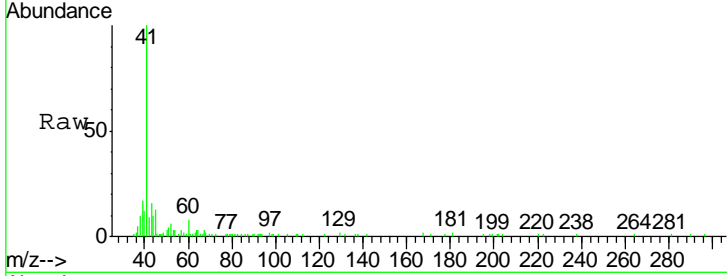




#48
 Methyl methacrylate
 Concen: 2.049 ug/l
 RT: 7.68 min Scan# 1071
 Delta R.T. -0.09 min
 Lab File: VX007113.D
 Acq: 18 Jan 2019 02:55

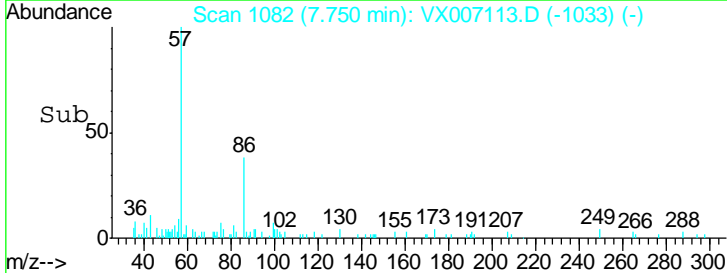
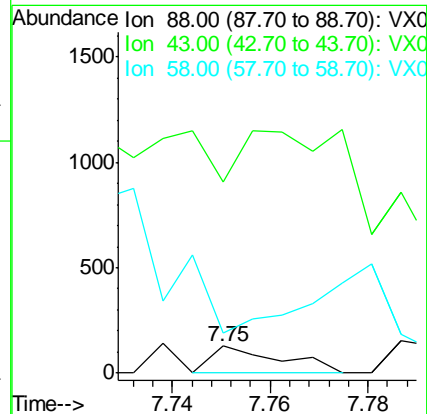
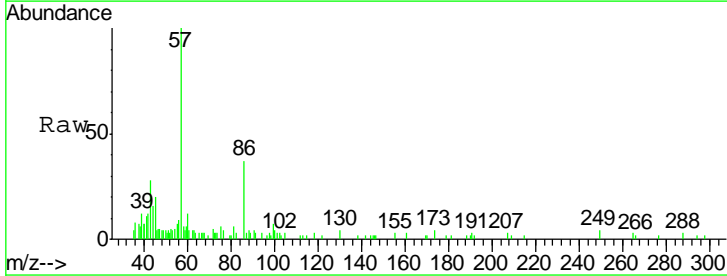
Instrument :
 MSVOA_X
 ClientSampled :
 D-9

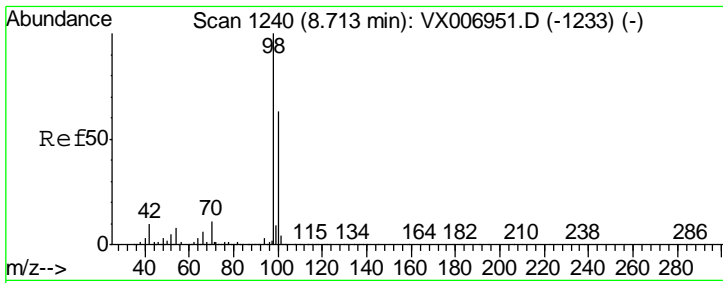
Tgt Ion	Resp	Lower	Upper
41	13509		
69	0.0	72.4	108.6#
39	0.0	45.8	68.8#



#49
 1,4-Dioxane
 Concen: Below Cal
 RT: 7.75 min Scan# 1082
 Delta R.T. 0.00 min
 Lab File: VX007113.D
 Acq: 18 Jan 2019 02:55

Tgt Ion	Resp	Lower	Upper
88	127		
43	0.0	22.2	33.4#
58	0.0	51.0	76.4#

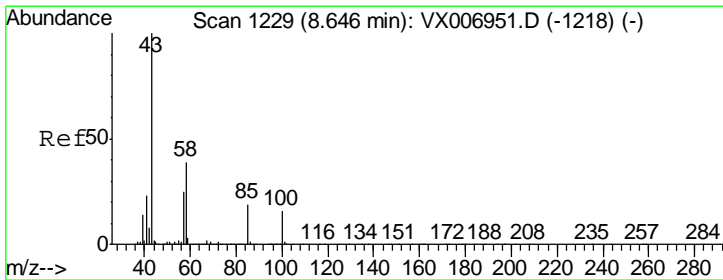
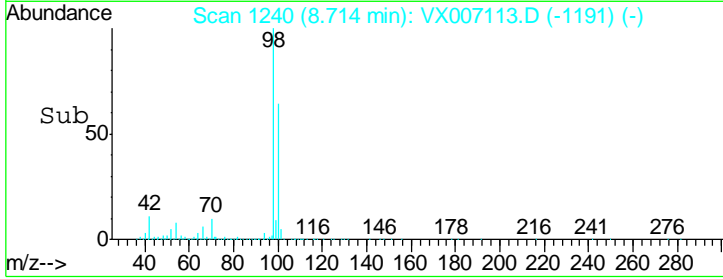
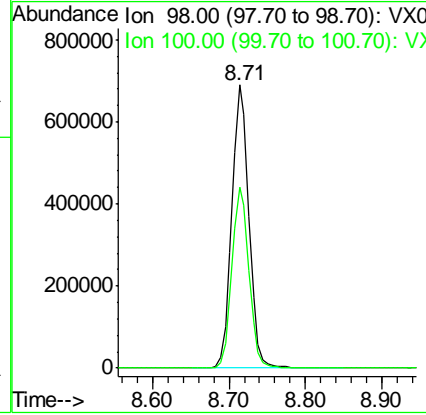
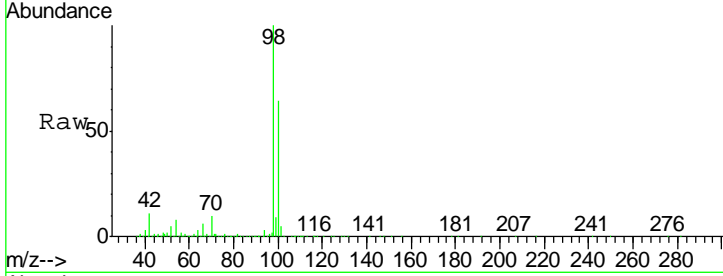




#50
 Toluene-d8
 Concen: 52.074 ug/l
 RT: 8.71 min Scan# 1240
 Delta R.T. 0.00 min
 Lab File: VX007113.D
 Acq: 18 Jan 2019 02:55

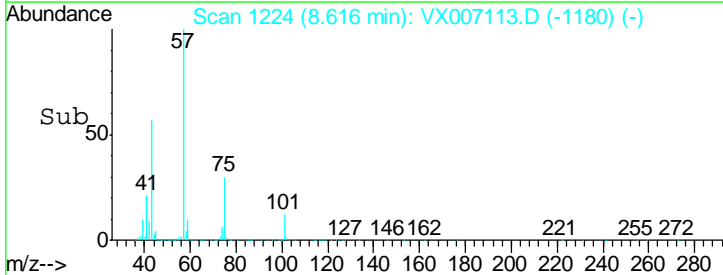
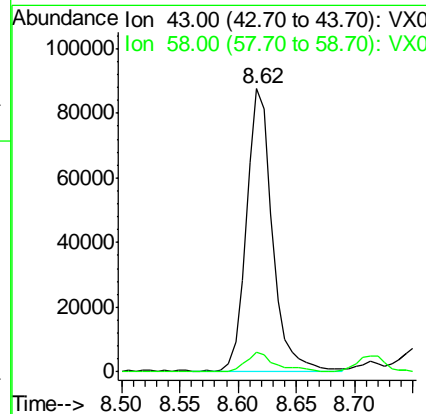
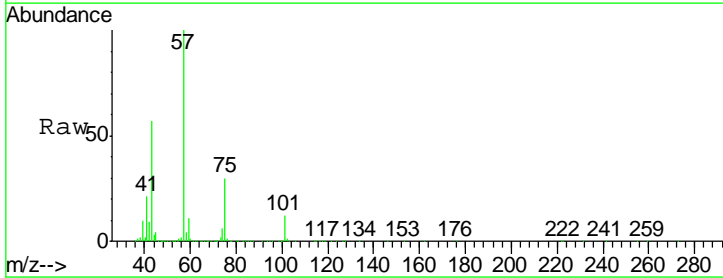
Instrument :
 MSVOA_X
 ClientSampled :
 D-9

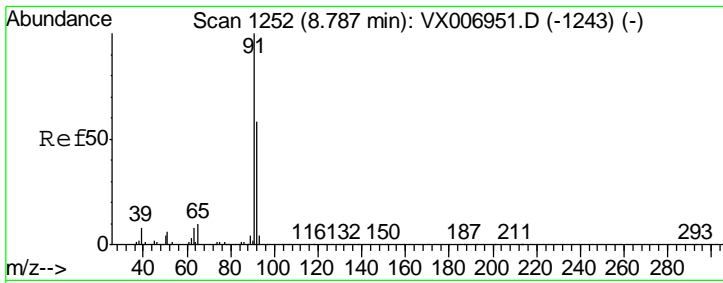
Tgt Ion: 98 Resp: 1065779
 Ion Ratio Lower Upper
 98 100
 100 63.8 52.0 78.0



#51
 4-Methyl-2-Pentanone
 Concen: 16.428 ug/l
 RT: 8.62 min Scan# 1224
 Delta R.T. -0.03 min
 Lab File: VX007113.D
 Acq: 18 Jan 2019 02:55

Tgt Ion: 43 Resp: 135534
 Ion Ratio Lower Upper
 43 100
 58 8.4 31.8 47.6#

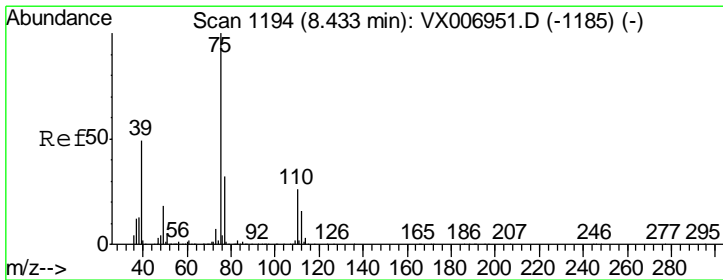
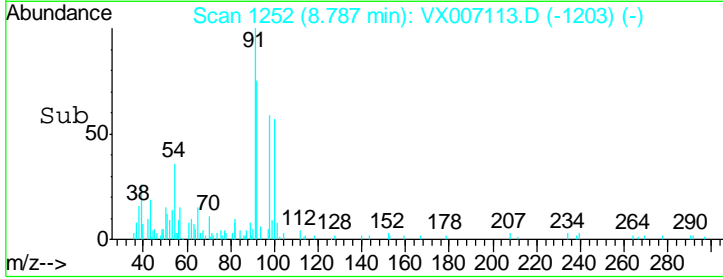
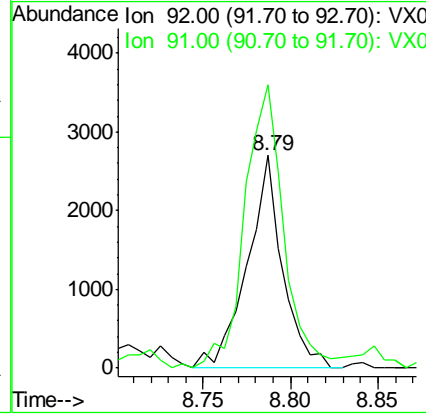
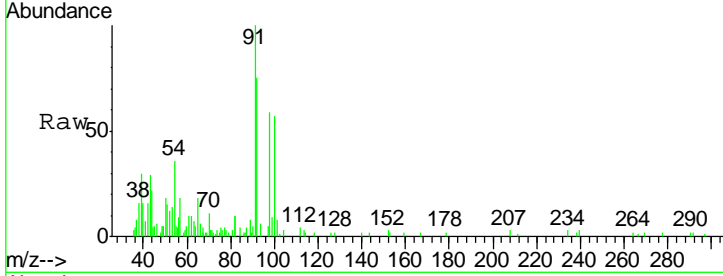




#52
 Toluene
 Concen: 0.253 ug/l
 RT: 8.79 min Scan# 1252
 Delta R.T. 0.00 min
 Lab File: VX007113.D
 Acq: 18 Jan 2019 02:55

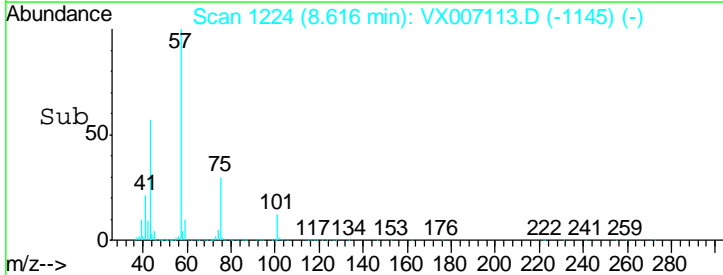
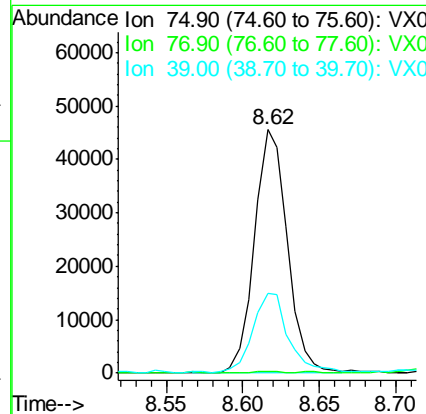
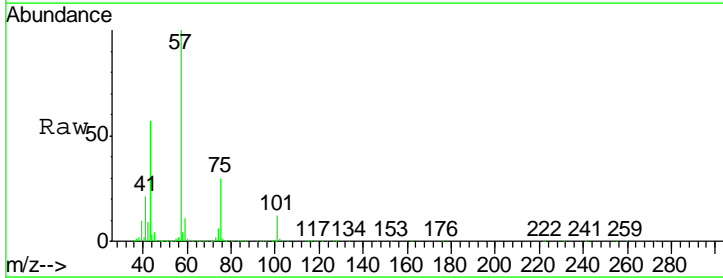
Instrument :
 MSVOA_X
 ClientSampled :
 D-9

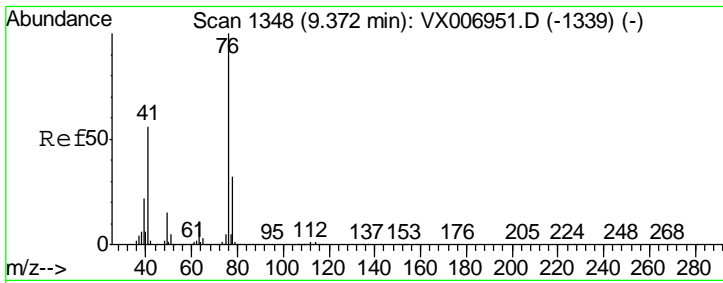
Tgt Ion	Resp	Lower	Upper
92	3770		
92	100		
91	147.1	137.6	206.4



#54
 cis-1,3-Dichloropropene
 Concen: 7.987 ug/l
 RT: 8.62 min Scan# 1224
 Delta R.T. 0.18 min
 Lab File: VX007113.D
 Acq: 18 Jan 2019 02:55

Tgt Ion	Resp	Lower	Upper
75	68135		
75	100		
77	0.6	26.2	39.2#
39	32.0	36.7	55.1#

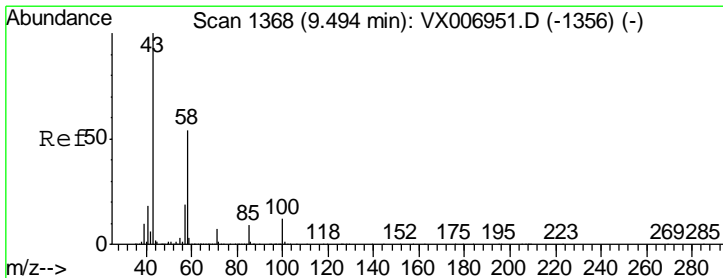
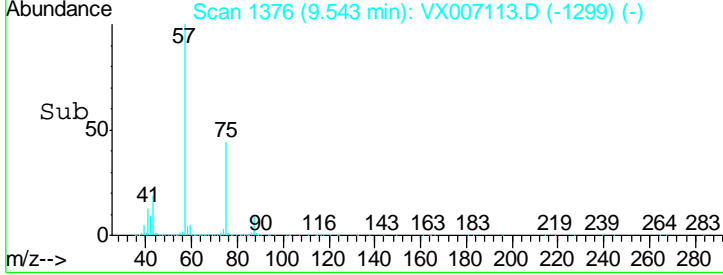
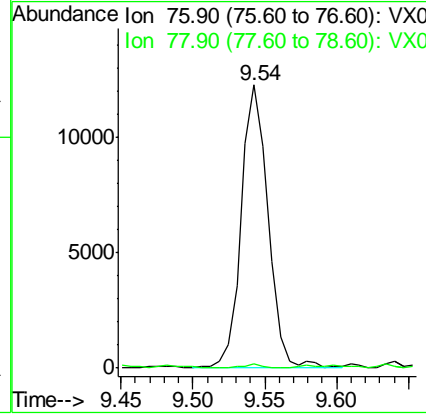
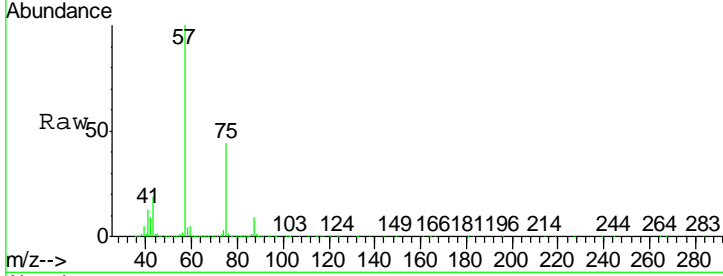




#57
 1,3-Dichloropropane
 Concen: 1.643 ug/l
 RT: 9.54 min Scan# 1376
 Delta R.T. 0.17 min
 Lab File: VX007113.D
 Acq: 18 Jan 2019 02:55

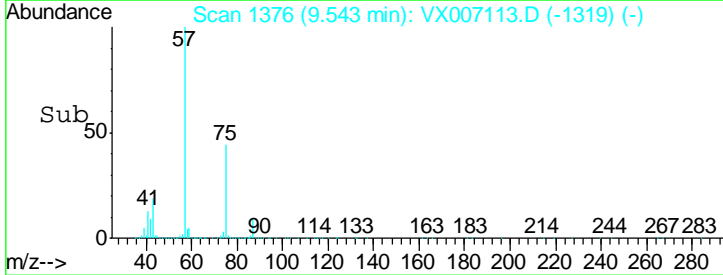
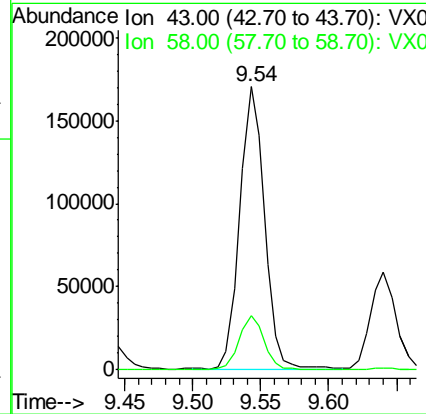
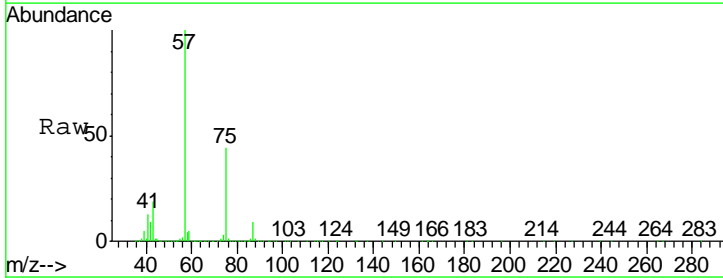
Instrument : MSVOA_X
 ClientSampled : D-9

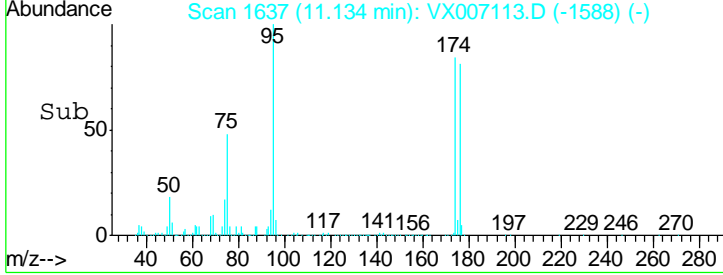
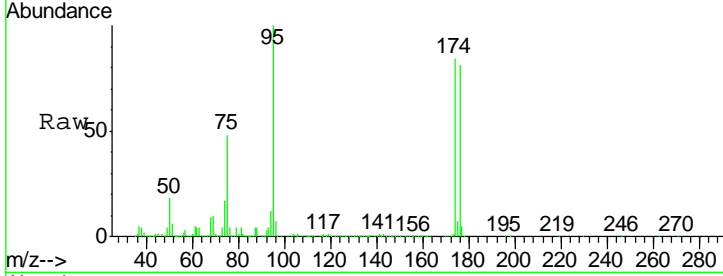
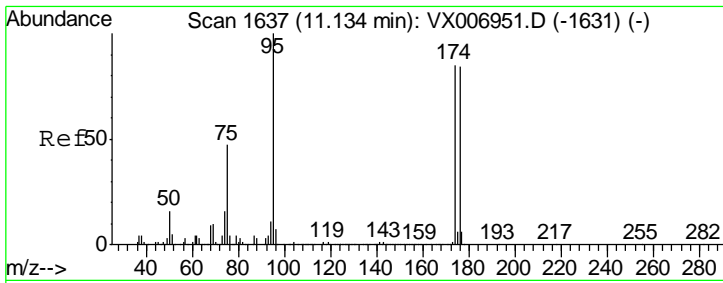
Tgt Ion: 76 Resp: 16036
 Ion Ratio Lower Upper
 76 100
 78 0.8 26.0 39.0#



#59
 2-Hexanone
 Concen: 34.429 ug/l
 RT: 9.54 min Scan# 1376
 Delta R.T. 0.05 min
 Lab File: VX007113.D
 Acq: 18 Jan 2019 02:55

Tgt Ion: 43 Resp: 216454
 Ion Ratio Lower Upper
 43 100
 58 19.9 27.7 83.1#

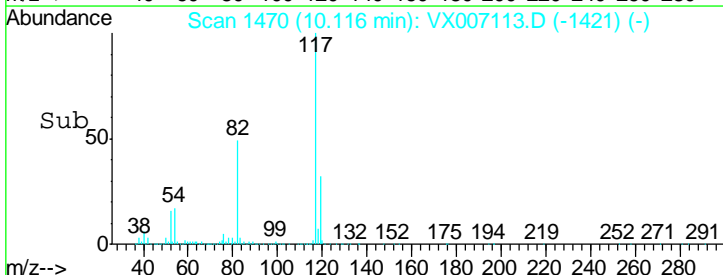
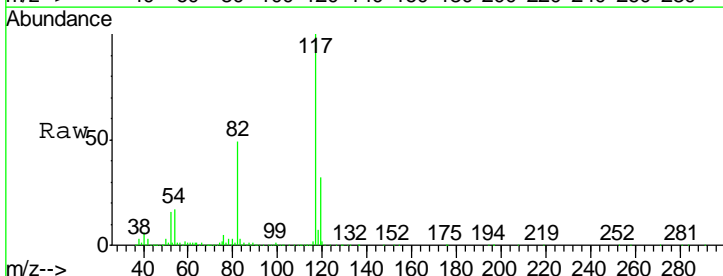
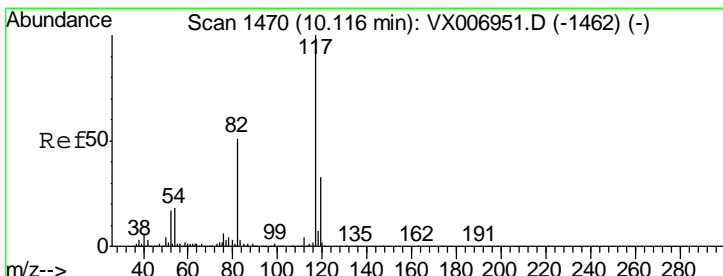
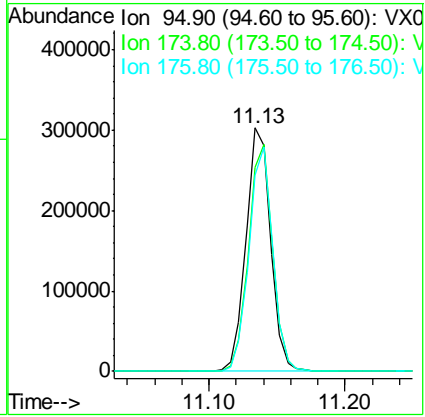




#62
 4-Bromofluorobenzene
 Concen: 53.748 ug/l
 RT: 11.13 min Scan# 1637
 Delta R.T. 0.00 min
 Lab File: VX007113.D
 Acq: 18 Jan 2019 02:55

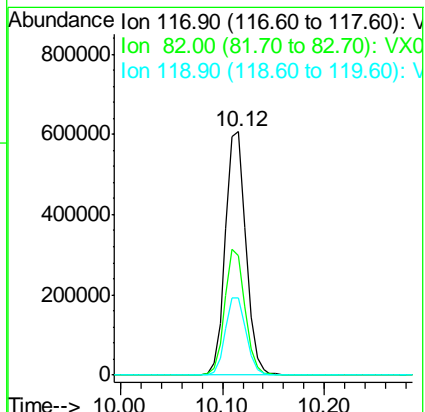
Instrument :
 MSVOA_X
 ClientSampled :
 D-9

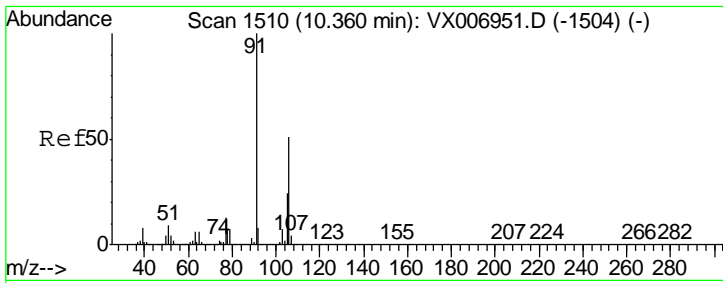
Tgt Ion	Resp	Lower	Upper
95	383499		
174	92.0	0.0	182.2
176	89.9	0.0	178.8



#63
 Chlorobenzene-d5
 Concen: 50.000 ug/l
 RT: 10.12 min Scan# 1470
 Delta R.T. 0.00 min
 Lab File: VX007113.D
 Acq: 18 Jan 2019 02:55

Tgt Ion	Resp	Lower	Upper
117	847484		
82	49.2	41.0	61.6
119	31.5	25.4	38.0

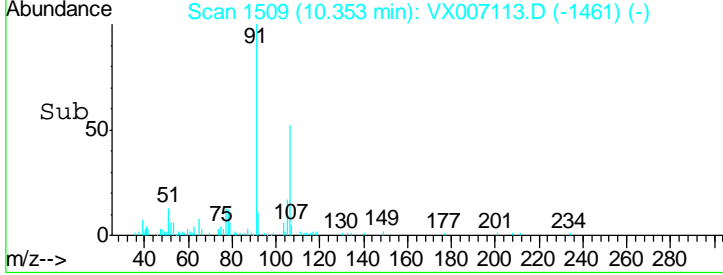
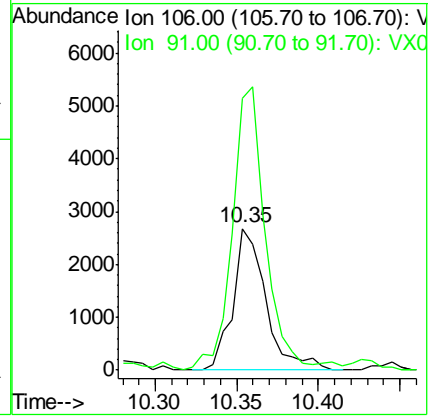
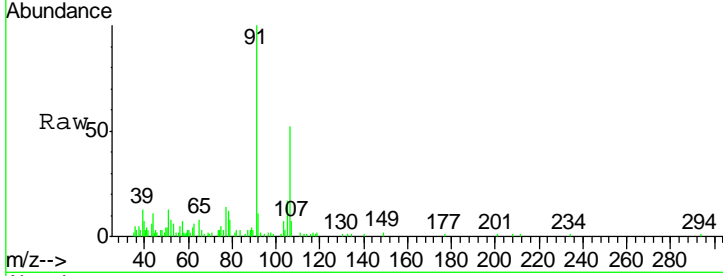




#68
 m/p-Xylenes
 Concen: 0.313 ug/l
 RT: 10.35 min Scan# 1509
 Delta R.T. -0.01 min
 Lab File: VX007113.D
 Acq: 18 Jan 2019 02:55

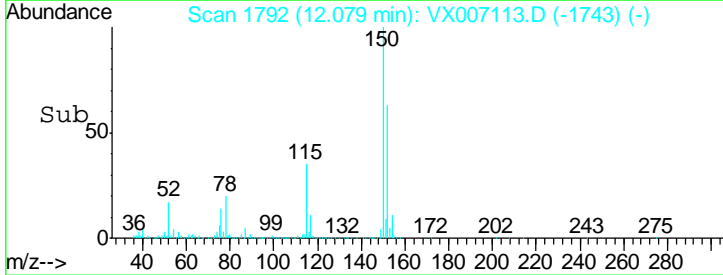
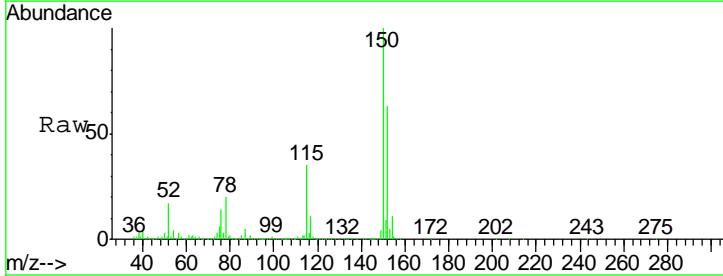
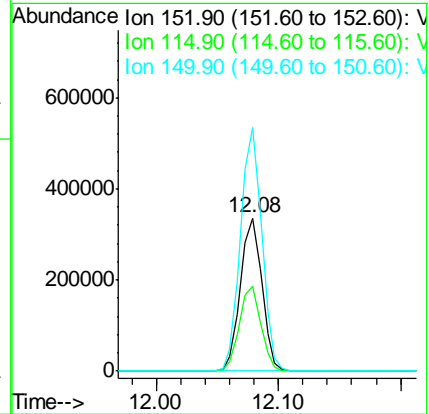
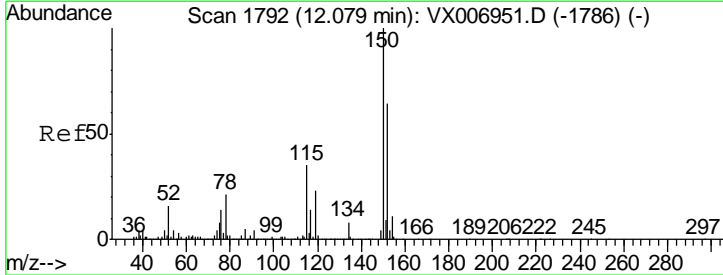
Instrument : MSVOA_X
 ClientSampled : D-9

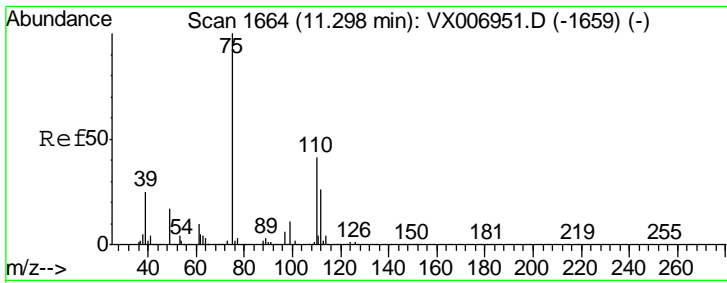
Tgt Ion	Resp	Lower	Upper
106	100		
91	197.9	155.8	233.6



#72
 1,4-Dichlorobenzene-d4
 Concen: 50.000 ug/l
 RT: 12.08 min Scan# 1792
 Delta R.T. 0.00 min
 Lab File: VX007113.D
 Acq: 18 Jan 2019 02:55

Tgt Ion	Resp	Lower	Upper
152	100		
115	55.0	39.1	117.2
150	157.4	0.0	344.8

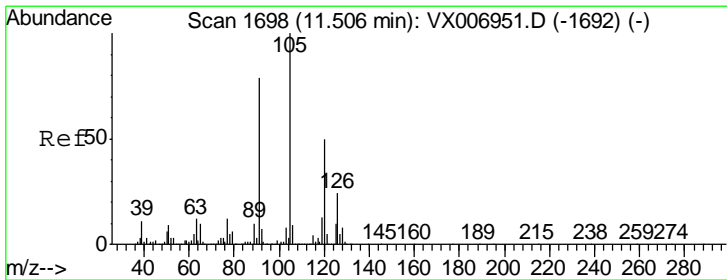
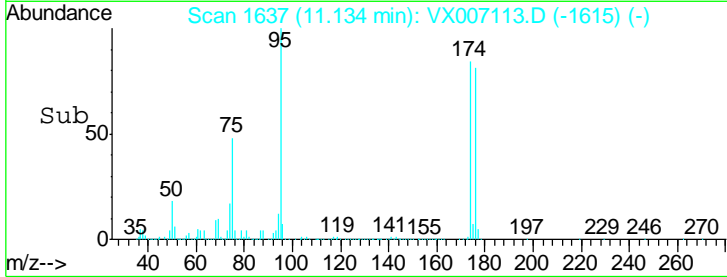
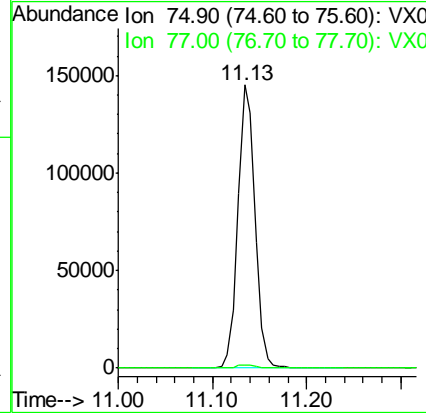
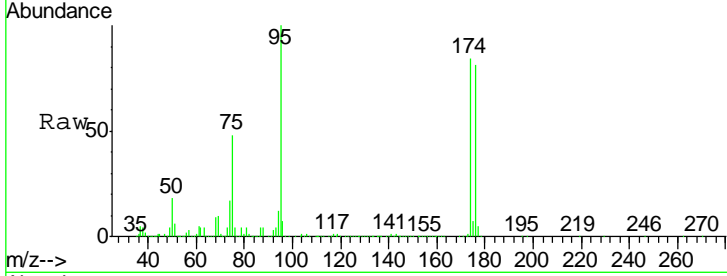




#76
 1,2,3-Trichloropropane
 Concen: 22.102 ug/l
 RT: 11.13 min Scan# 1637
 Delta R.T. -0.16 min
 Lab File: VX007113.D
 Acq: 18 Jan 2019 02:55

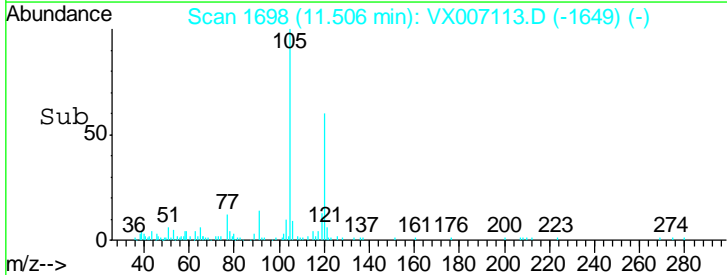
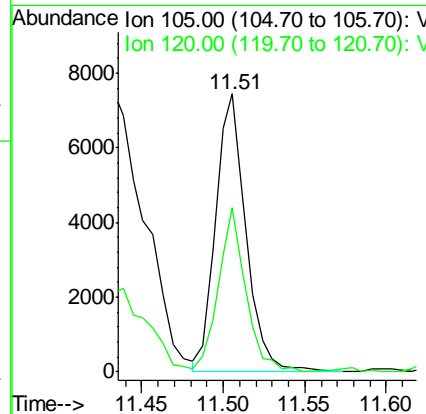
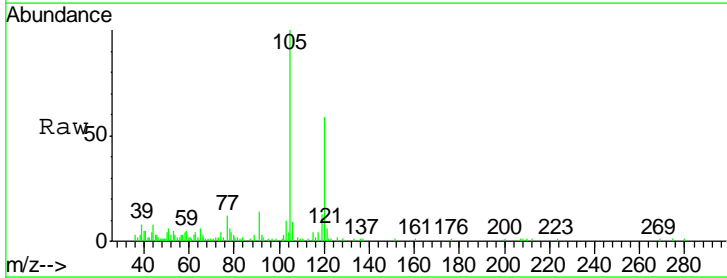
Instrument :
 MSVOA_X
 ClientSampled :
 D-9

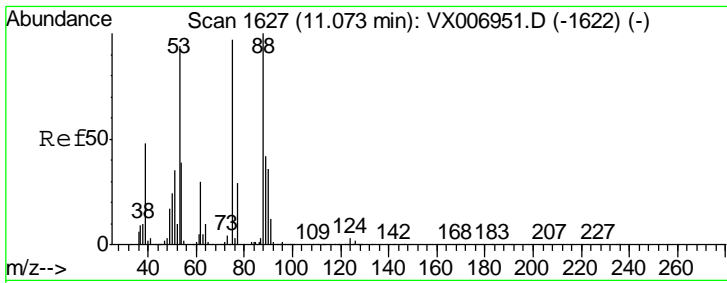
Tgt Ion: 75 Resp: 182607
 Ion Ratio Lower Upper
 75 100
 77 1.4 18.5 55.5#



#80
 1,3,5-Trimethylbenzene
 Concen: 0.402 ug/l
 RT: 11.51 min Scan# 1698
 Delta R.T. 0.00 min
 Lab File: VX007113.D
 Acq: 18 Jan 2019 02:55

Tgt Ion: 105 Resp: 9659
 Ion Ratio Lower Upper
 105 100
 120 53.3 25.1 75.3

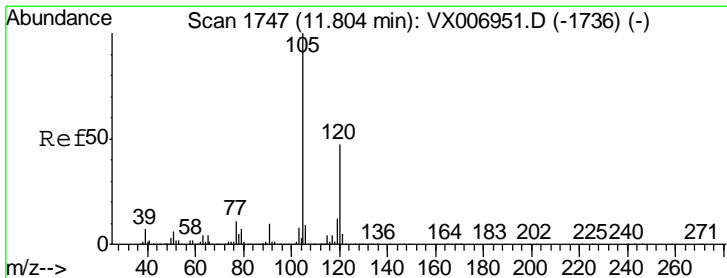
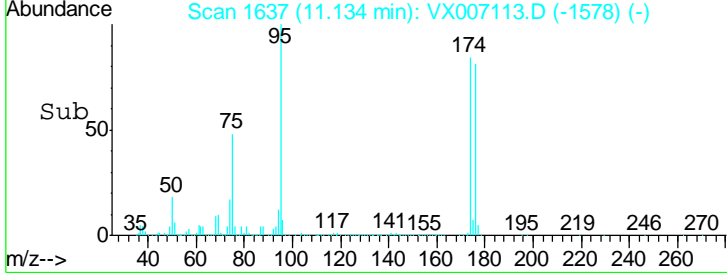
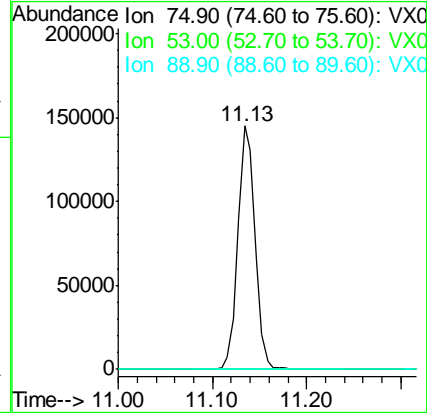
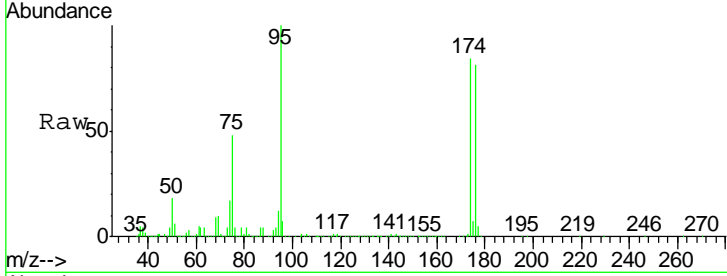




#81
 trans-1,4-Dichloro-2-butene
 Concen: 65.438 ug/l
 RT: 11.13 min Scan# 1637
 Delta R.T. 0.06 min
 Lab File: VX007113.D
 Acq: 18 Jan 2019 02:55

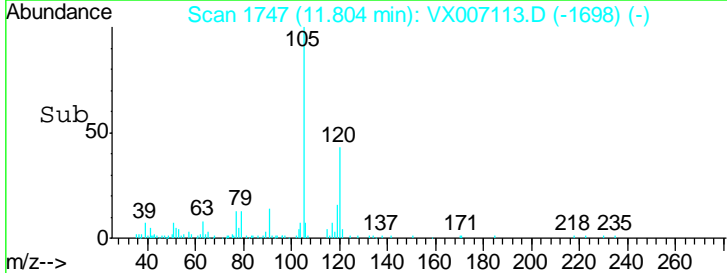
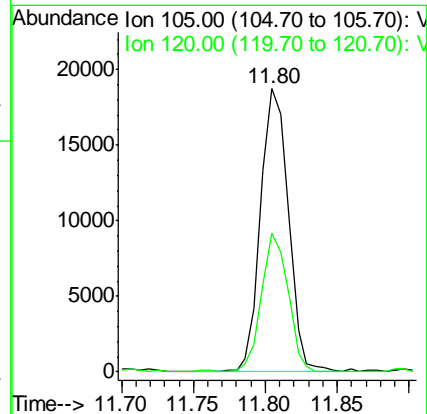
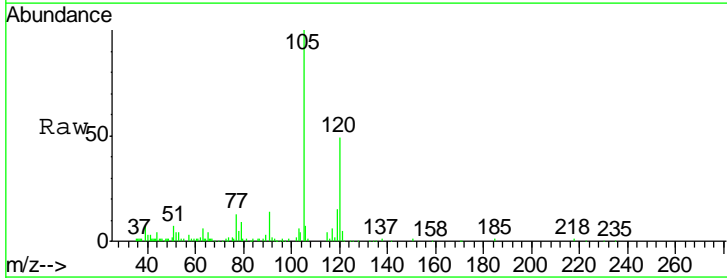
Instrument :
 MSVOA_X
 ClientSampled :
 D-9

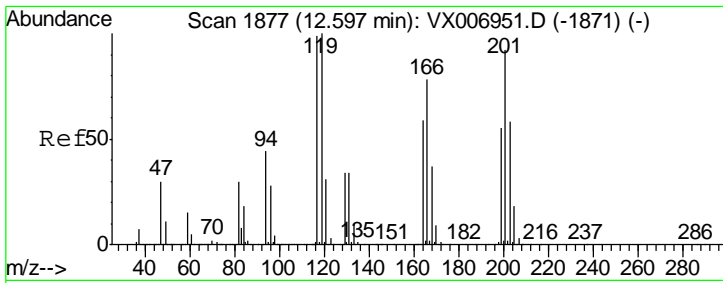
Tgt Ion	Resp	Lower	Upper
75	100		
53	0.2	79.7	119.5#
89	0.0	38.0	57.0#



#84
 1,2,4-Trimethylbenzene
 Concen: 1.035 ug/l
 RT: 11.80 min Scan# 1747
 Delta R.T. 0.00 min
 Lab File: VX007113.D
 Acq: 18 Jan 2019 02:55

Tgt Ion	Resp	Lower	Upper
105	100		
120	46.6	23.2	69.6

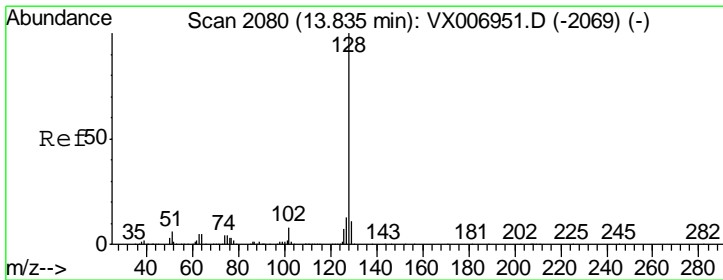
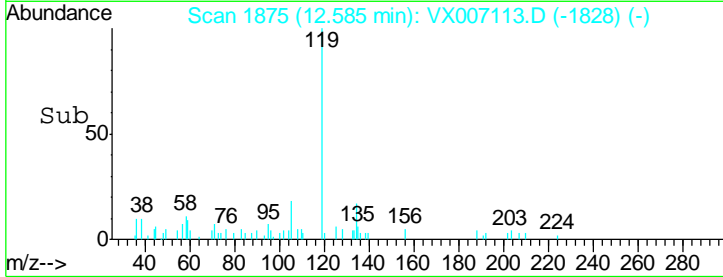
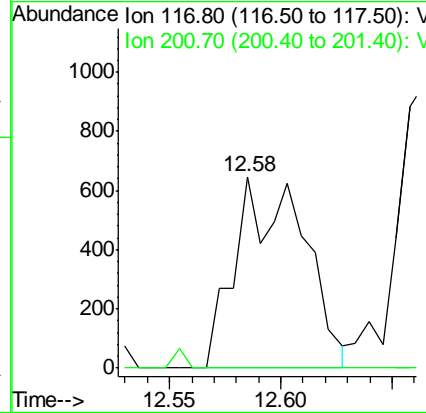
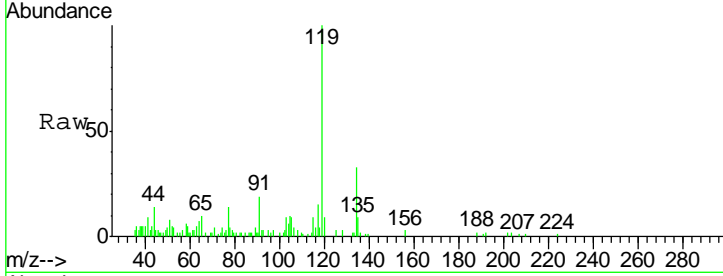




#90
 Hexachloroethane
 Concen: 3.227 ug/l
 RT: 12.58 min Scan# 1875
 Delta R.T. -0.01 min
 Lab File: VX007113.D
 Acq: 18 Jan 2019 02:55

Instrument :
 MSVOA_X
 ClientSampled :
 D-9

Tgt Ion: 117 Resp: 1382
 Ion Ratio Lower Upper
 117 100
 201 0.0 42.9 128.7#



#95
 Naphthalene
 Concen: 9.833 ug/l
 RT: 13.83 min Scan# 2080
 Delta R.T. 0.00 min
 Lab File: VX007113.D
 Acq: 18 Jan 2019 02:55

Tgt Ion: 128 Resp: 288835
 Ion Ratio Lower Upper
 128 100
 127 13.1 10.1 15.1
 129 11.3 8.6 13.0

