

Data Path : Z:\VOASRV\HPCHEM1\MSVOA X\DATA\VX011720\  
 Data File : VX014655.D  
 Acq On : 17 Jan 2020 15:21  
 Operator : JC/SP  
 Sample : L1162-03  
 Misc : 5.0mL/MSVOA X/WATER  
 ALS Vial : 14 Sample Multiplier: 1

Instrument :  
 MSVOA\_X  
 ClientSampleId :

Quant Time: Jan 18 05:08:25 2020  
 Quant Method : Z:\VOASRV\HPCHEM1\MSVOA\_X\METHOD\82X010720W.M  
 Quant Title : SW846 8260  
 QLast Update : Tue Jan 07 15:54:41 2020  
 Response via : Initial Calibration

Internal Standards	R.T.	QIon	Response	Conc	Units	Dev(Min)
1) Pentafluorobenzene	5.65	168	429820	50.00	ug/l	0.00
34) 1,4-Difluorobenzene	6.85	114	671771	50.00	ug/l	0.00
63) Chlorobenzene-d5	10.11	117	602380	50.00	ug/l	0.00
72) 1,4-Dichlorobenzene-d4	12.07	152	271640	50.00	ug/l	0.00

## System Monitoring Compounds

33) 1,2-Dichloroethane-d4	6.05	65	248134	51.71	ug/l	0.00
Spiked Amount	50.000		Recovery	=	103.42%	
35) Dibromofluoromethane	5.49	113	202876	49.89	ug/l	0.00
Spiked Amount	50.000		Recovery	=	99.78%	
50) Toluene-d8	8.71	98	800211	50.71	ug/l	0.00
Spiked Amount	50.000		Recovery	=	101.42%	
62) 4-Bromofluorobenzene	11.13	95	267446	46.16	ug/l	0.00
Spiked Amount	50.000		Recovery	=	92.32%	

## Target Compounds

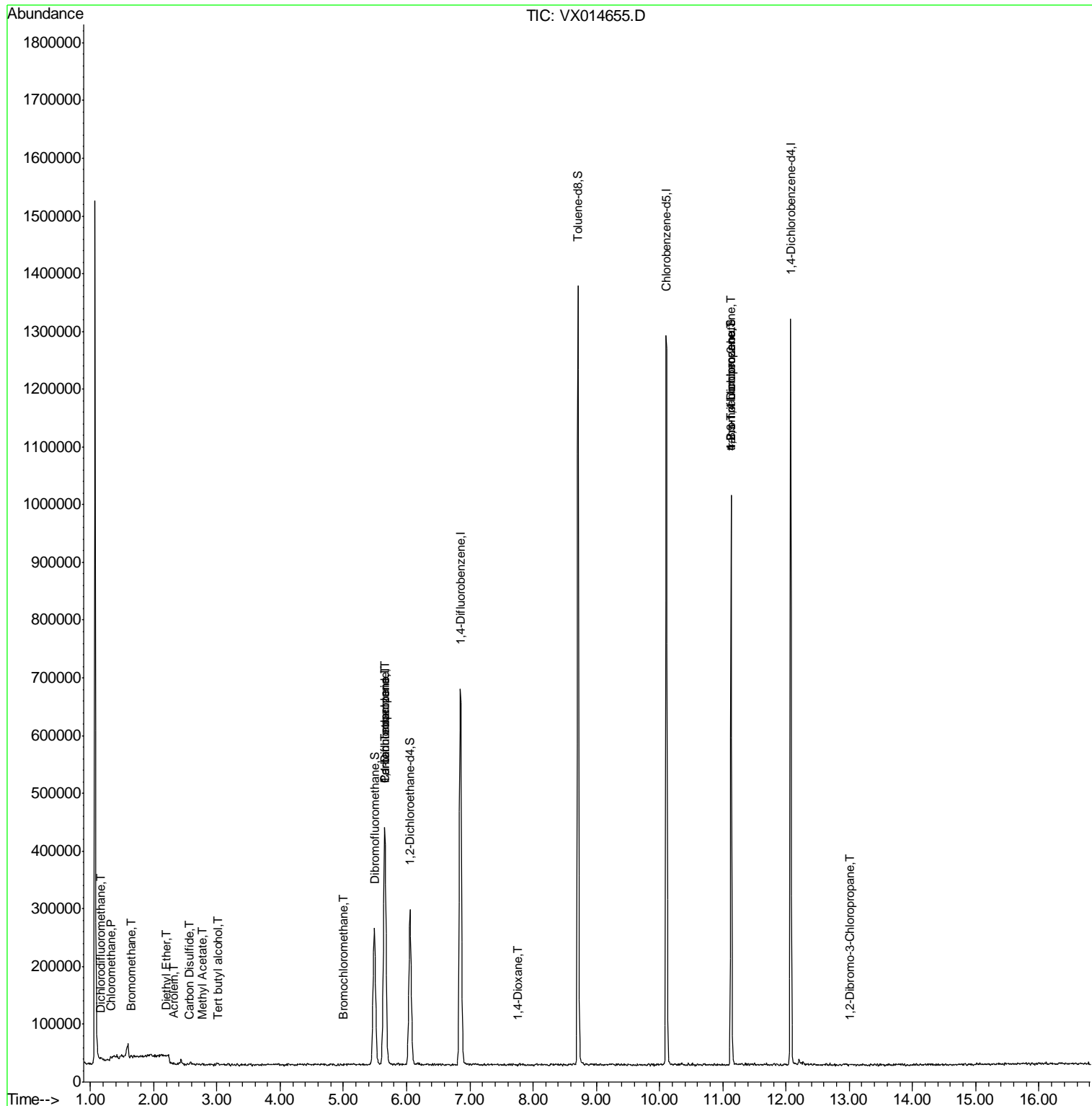
						Qvalue
2) Dichlorodifluoromethane	1.17	85	190	0.288	ug/l #	42
3) Chloromethane	1.32	50	1289	0.235	ug/l #	42
5) Bromomethane	1.64	94	1171	0.289	ug/l #	56
6) Chloroethane	1.74	64	329	Below Cal	#	27
8) Diethyl Ether	2.20	74	793	0.251	ug/l	77
11) Tert butyl alcohol	3.03	59	1380	1.377	ug/l #	51
13) Acrolein	2.31	56	1179	1.468	ug/l #	15
16) Acetone	2.43	43	8457	Below Cal		92
17) Carbon Disulfide	2.56	76	2847	0.240	ug/l #	74
18) Methyl Acetate	2.77	43	1414	0.205	ug/l #	80
28) Bromochloromethane	5.00	49	755	0.229	ug/l #	57
36) 1,1-Dichloropropene	5.65	75	29385	4.651	ug/l #	51
38) Carbon Tetrachloride	5.66	117	38018	6.540	ug/l #	17
49) 1,4-Dioxane	7.76	88	630	5.600	ug/l #	14
76) 1,2,3-Trichloropropane	11.13	75	130237	23.173	ug/l #	35
81) trans-1,4-Dichloro-2-buten	11.13	75	130237	61.264	ug/l #	12
88) 1,4-Dichlorobenzene	12.02	146	617	Below Cal		98
92) 1,2-Dibromo-3-Chloropropan	13.01	75	443	0.322	ug/l #	36
93) 1,2,4-Trichlorobenzene	13.63	180	379	Below Cal	#	68
96) 1,2,3-Trichlorobenzene	14.00	180	334	Below Cal	#	67

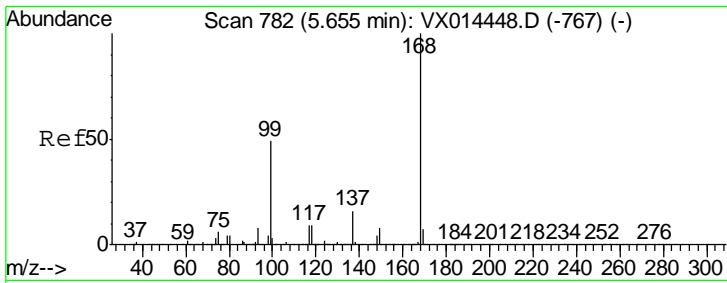
(#) = qualifier out of range (m) = manual integration (+) = signals summed

Data Path : Z:\VOASRV\HPCHEM1\MSVOA X\DATA\VX011720\  
 Data File : VX014655.D  
 Acq On : 17 Jan 2020 15:21  
 Operator : JC/SP  
 Sample : L1162-03  
 Misc : 5.0mL/MSVOA X/WATER  
 ALS Vial : 14 Sample Multiplier: 1

Instrument :  
 MSVOA\_X  
 Client Sampled :

Quant Time: Jan 18 05:08:25 2020  
 Quant Method : Z:\VOASRV\HPCHEM1\MSVOA\_X\METHOD\82X010720W.M  
 Quant Title : SW846 8260  
 QLast Update : Tue Jan 07 15:54:41 2020  
 Response via : Initial Calibration

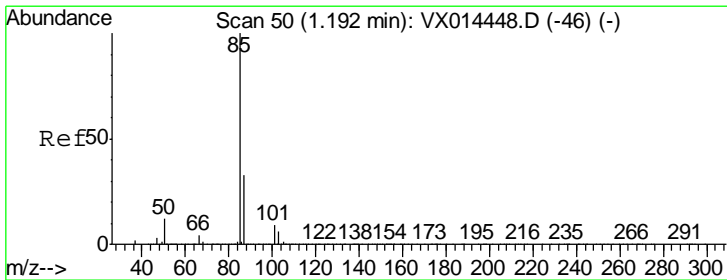
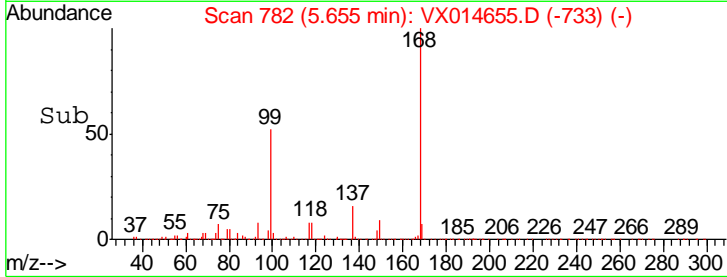
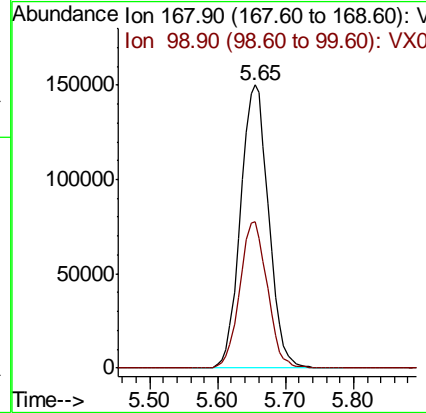
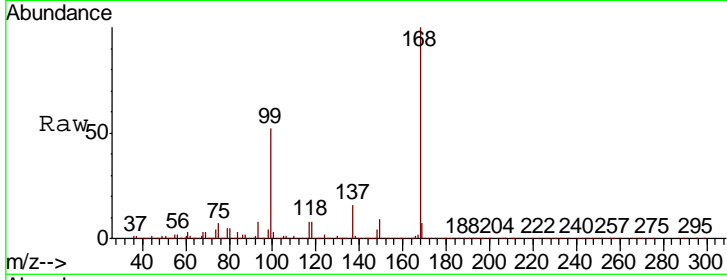




#1  
 Pentafluorobenzene  
 Concen: 50.000 ug/l  
 RT: 5.65 min Scan# 782  
 Delta R.T. 0.00 min  
 Lab File: VX014655.D  
 Acq: 17 Jan 2020 15:21

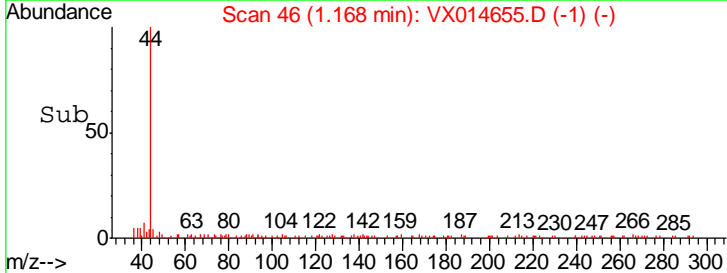
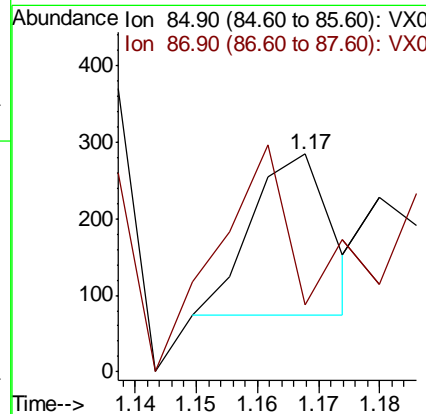
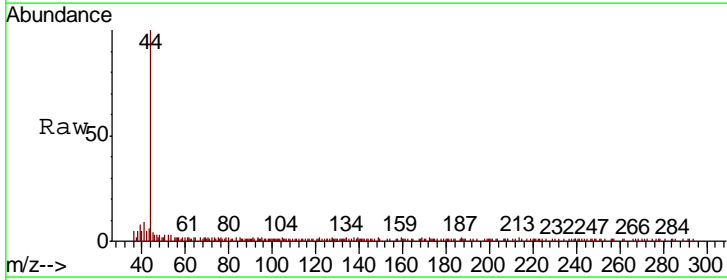
Instrument : MSVOA\_X  
 Client Sampled :

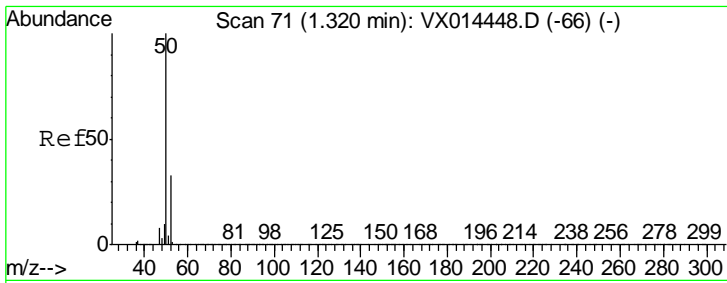
Tgt Ion	Resp	Lower	Upper
168	429820		
99	51.6	39.2	58.8



#2  
 Dichlorodifluoromethane  
 Concen: 0.288 ug/l  
 RT: 1.17 min Scan# 46  
 Delta R.T. -0.02 min  
 Lab File: VX014655.D  
 Acq: 17 Jan 2020 15:21

Tgt Ion	Resp	Lower	Upper
85	190		
87	0.0	16.5	49.5

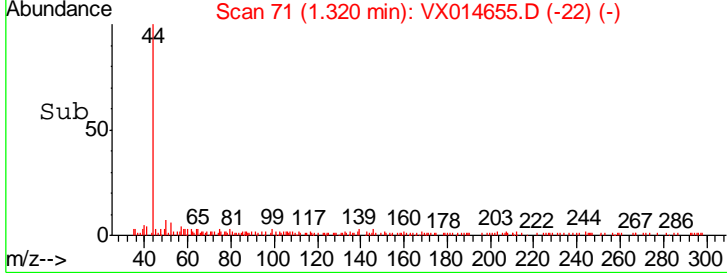
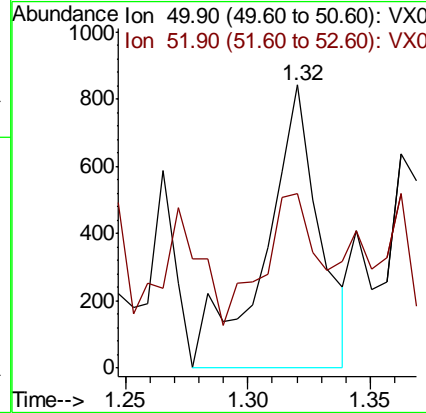
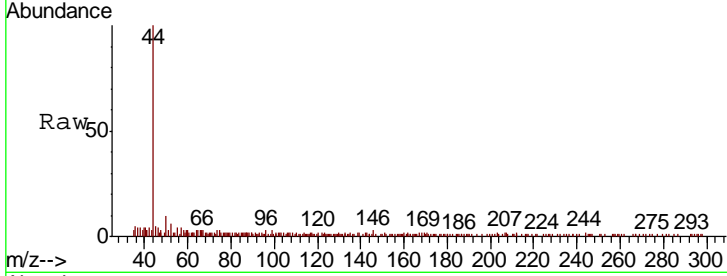




#3  
 Chloromethane  
 Concen: 0.235 ug/l  
 RT: 1.32 min Scan# 71  
 Delta R.T. 0.00 min  
 Lab File: VX014655.D  
 Acq: 17 Jan 2020 15:21

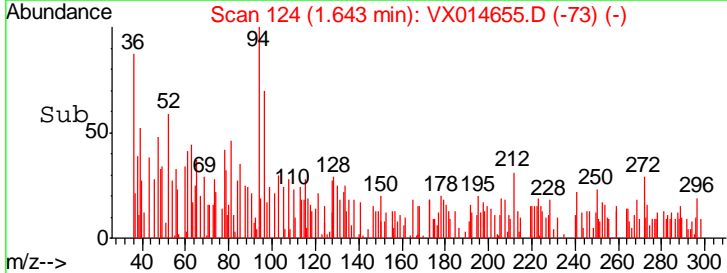
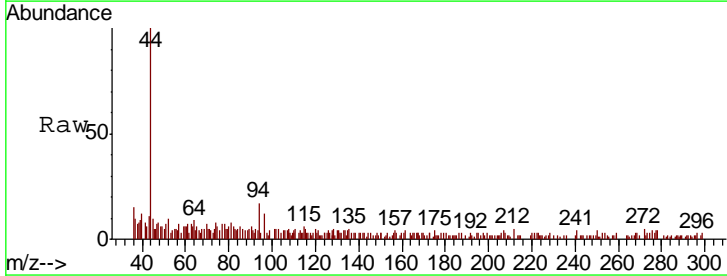
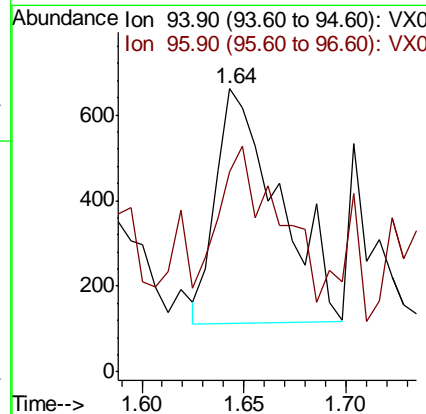
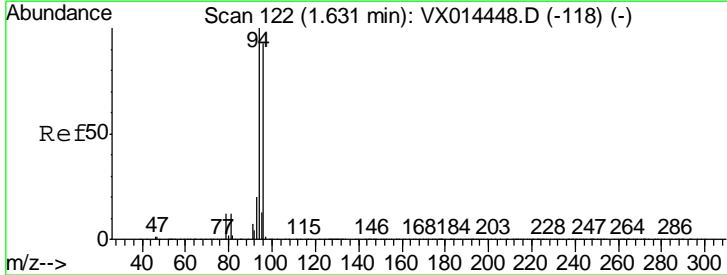
Instrument :  
 MSVOA\_X  
 ClientSampled :

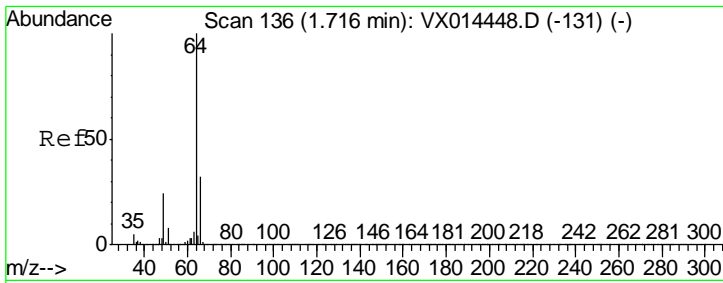
Tgt Ion	Resp	Lower	Upper
50	1289		
52	0.0	26.1	39.1#



#5  
 Bromomethane  
 Concen: 0.289 ug/l  
 RT: 1.64 min Scan# 124  
 Delta R.T. 0.01 min  
 Lab File: VX014655.D  
 Acq: 17 Jan 2020 15:21

Tgt Ion	Resp	Lower	Upper
94	1171		
96	50.4	74.2	111.2#

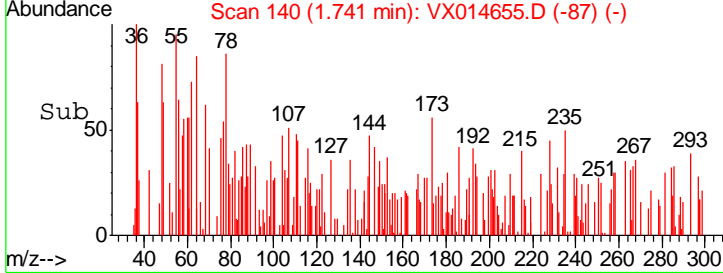
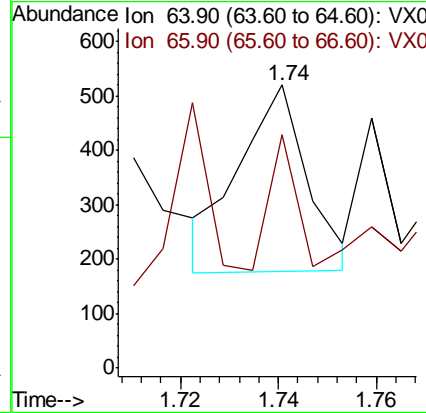
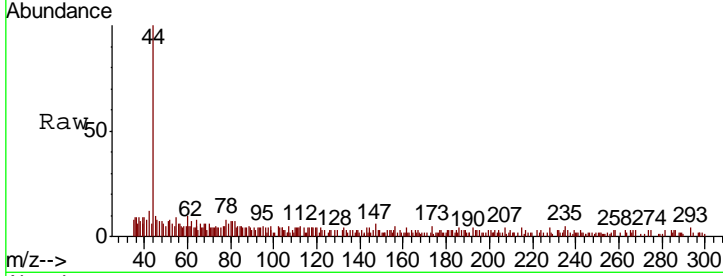




#6  
 Chloroethane  
 Concen: Below Cal  
 RT: 1.74 min Scan# 140  
 Delta R.T. 0.02 min  
 Lab File: VX014655.D  
 Acq: 17 Jan 2020 15:21

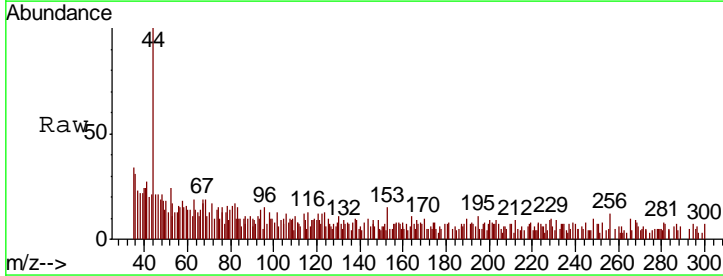
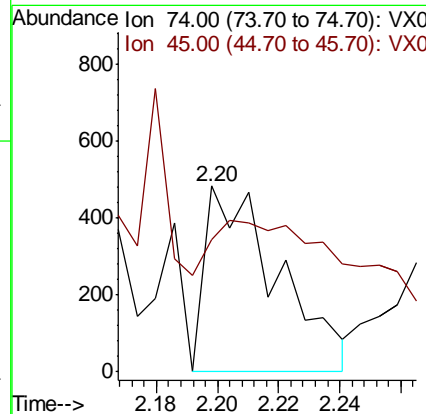
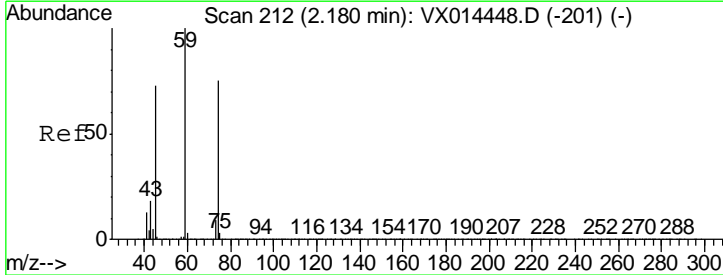
Instrument :  
 MSVOA\_X  
 ClientSampled :

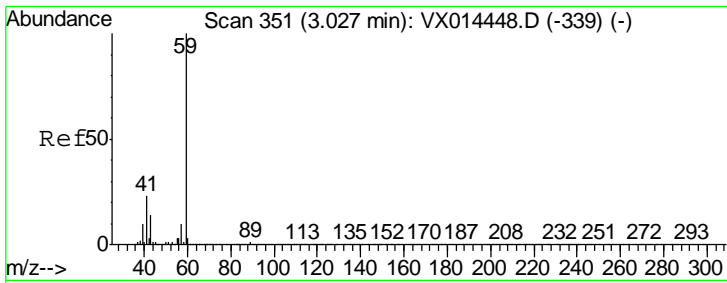
Tgt Ion	Resp	Lower	Upper
64	100		
66	72.3	25.3	37.9#



#8  
 Diethyl Ether  
 Concen: 0.251 ug/l  
 RT: 2.20 min Scan# 215  
 Delta R.T. 0.02 min  
 Lab File: VX014655.D  
 Acq: 17 Jan 2020 15:21

Tgt Ion	Resp	Lower	Upper
74	100		
45	74.8	48.7	146.1

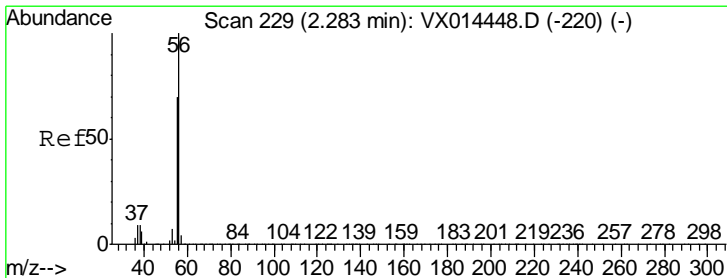
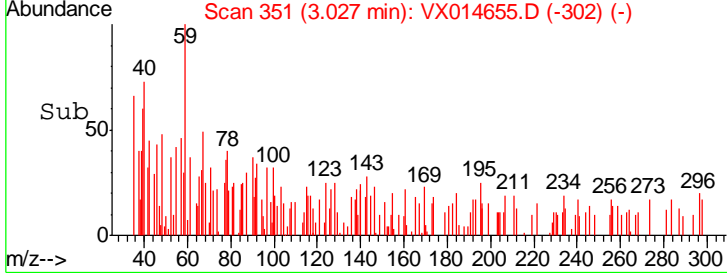
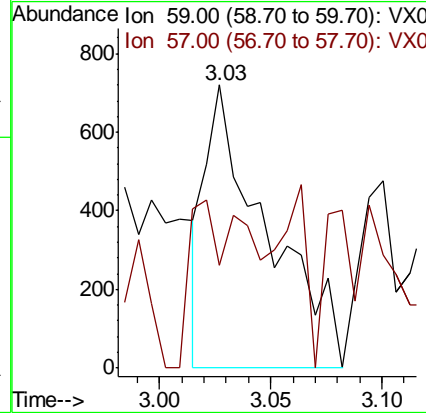
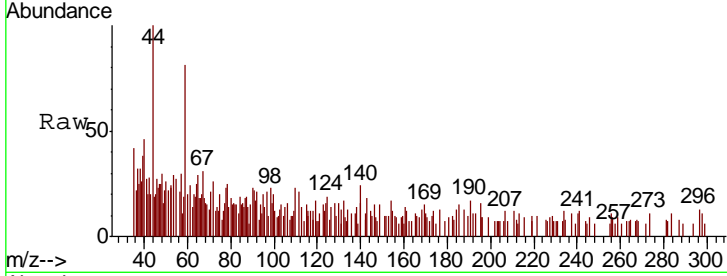




#11  
 Tert butyl alcohol  
 Concen: 1.377 ug/l  
 RT: 3.03 min Scan# 351  
 Delta R.T. 0.00 min  
 Lab File: VX014655.D  
 Acq: 17 Jan 2020 15:21

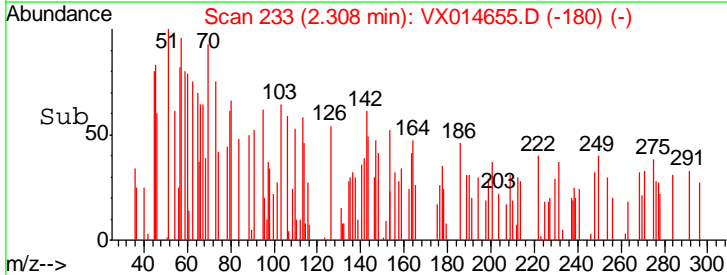
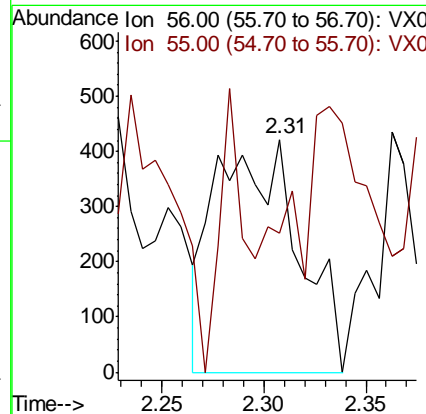
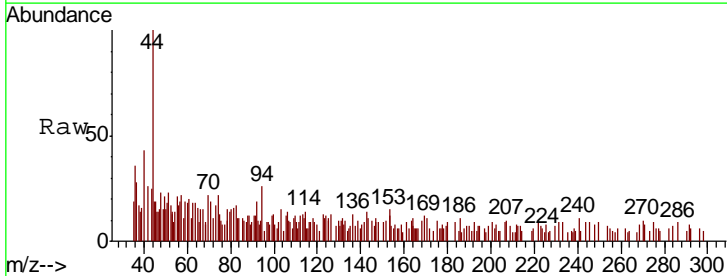
Instrument :  
 MSVOA\_X  
 ClientSampled :

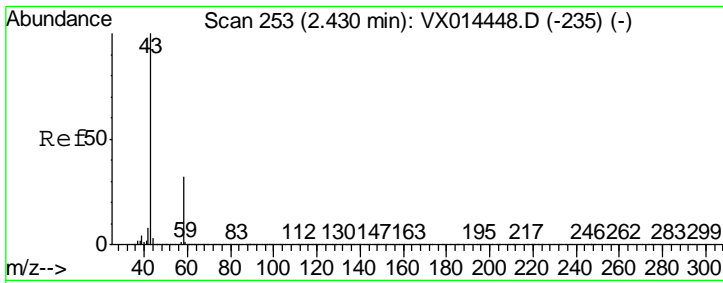
Tgt Ion: 59 Resp: 1380  
 Ion Ratio Lower Upper  
 59 100  
 57 29.1 8.5 12.7#



#13  
 Acrolein  
 Concen: 1.468 ug/l  
 RT: 2.31 min Scan# 233  
 Delta R.T. 0.02 min  
 Lab File: VX014655.D  
 Acq: 17 Jan 2020 15:21

Tgt Ion: 56 Resp: 1179  
 Ion Ratio Lower Upper  
 56 100  
 55 0.0 55.0 82.6#

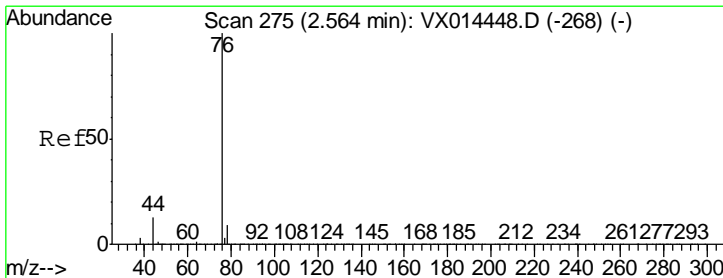
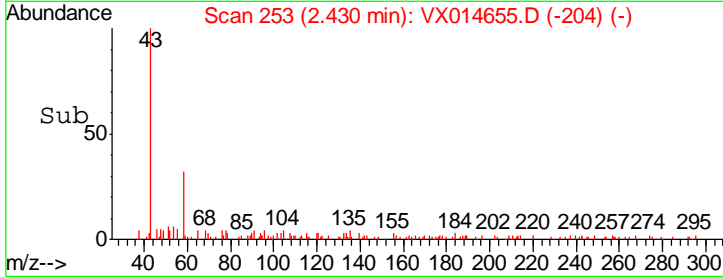
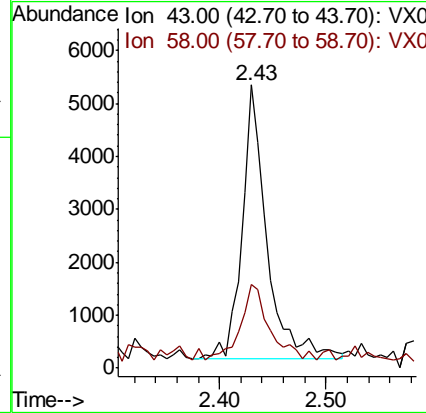
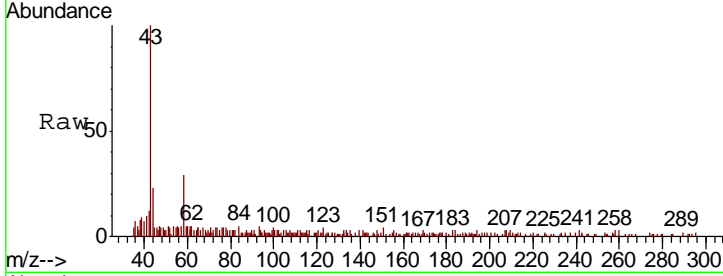




#16  
 Acetone  
 Concen: Below Cal  
 RT: 2.43 min Scan# 253  
 Delta R.T. 0.00 min  
 Lab File: VX014655.D  
 Acq: 17 Jan 2020 15:21

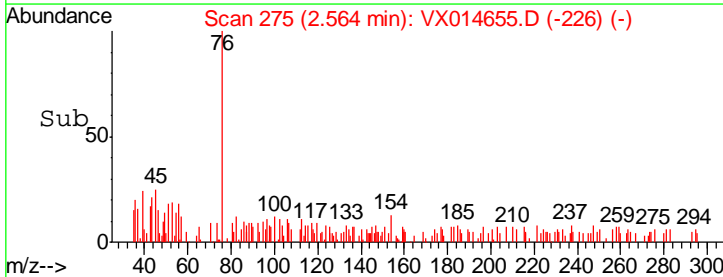
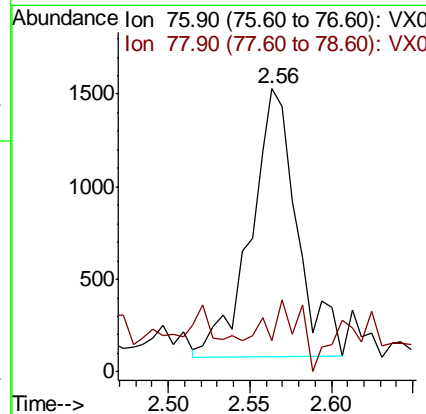
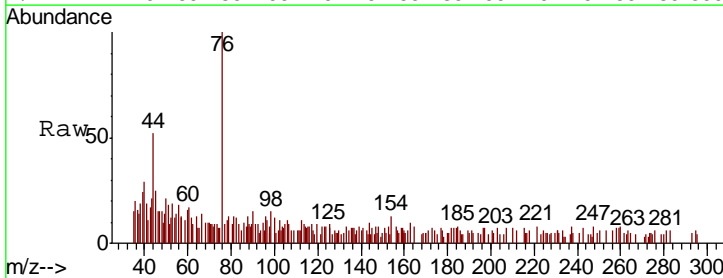
Instrument : MSVOA\_X  
 ClientSampled :

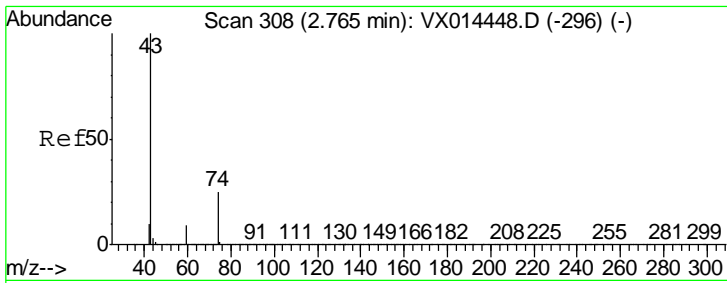
Tgt Ion	Resp	Lower	Upper
43	100		
58	27.2	25.4	38.0



#17  
 Carbon Disulfide  
 Concen: 0.240 ug/l  
 RT: 2.56 min Scan# 275  
 Delta R.T. 0.00 min  
 Lab File: VX014655.D  
 Acq: 17 Jan 2020 15:21

Tgt Ion	Resp	Lower	Upper
76	100		
78	0.0	7.4	11.2#

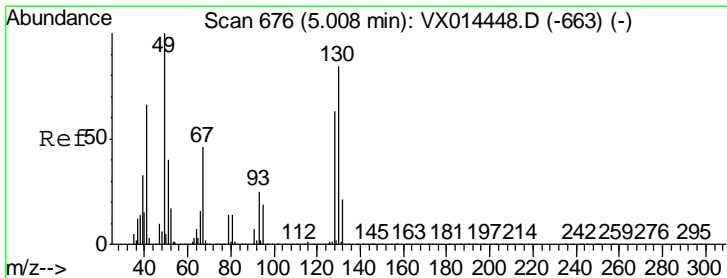
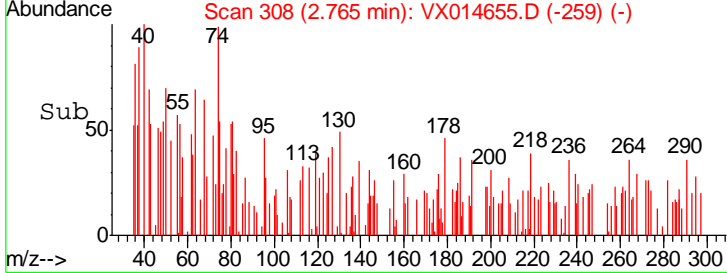
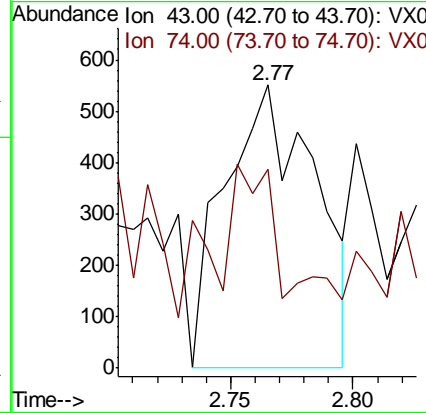
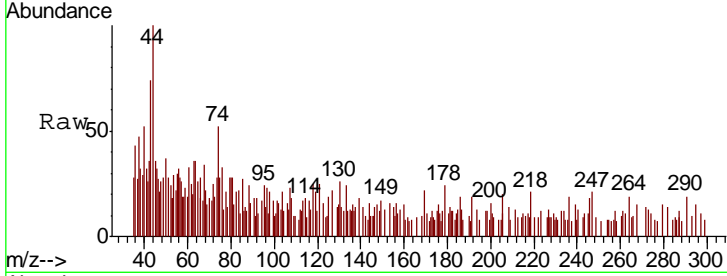




#18  
 Methyl Acetate  
 Concen: 0.205 ug/l  
 RT: 2.77 min Scan# 308  
 Delta R.T. 0.00 min  
 Lab File: VX014655.D  
 Acq: 17 Jan 2020 15:21

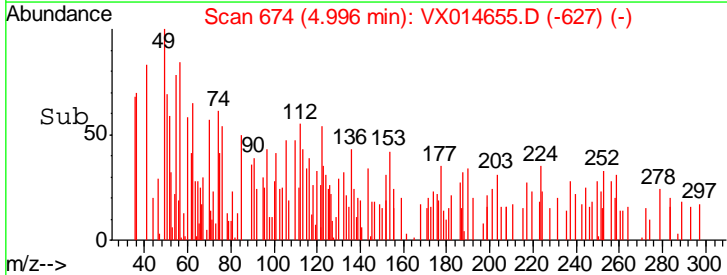
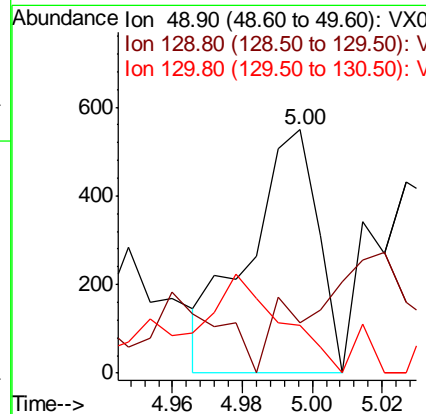
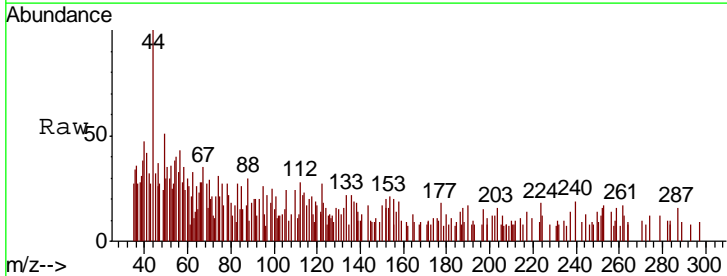
Instrument :  
 MSVOA\_X  
 ClientSampled :

Tgt Ion: 43 Resp: 1414  
 Ion Ratio Lower Upper  
 43 100  
 74 34.1 19.4 29.2#

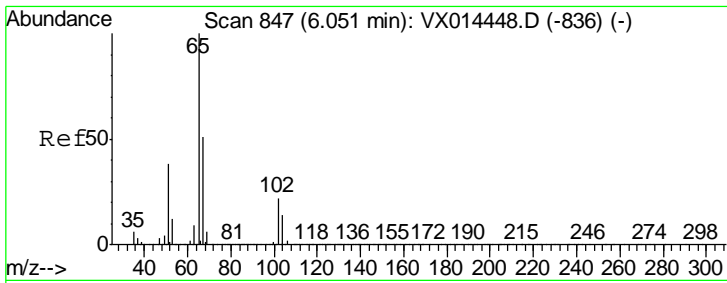


#28  
 Bromochloromethane  
 Concen: 0.229 ug/l  
 RT: 5.00 min Scan# 674  
 Delta R.T. -0.01 min  
 Lab File: VX014655.D  
 Acq: 17 Jan 2020 15:21

Tgt Ion: 49 Resp: 755  
 Ion Ratio Lower Upper  
 49 100  
 129 0.0 0.0 4.4  
 130 43.6 67.0 100.4#



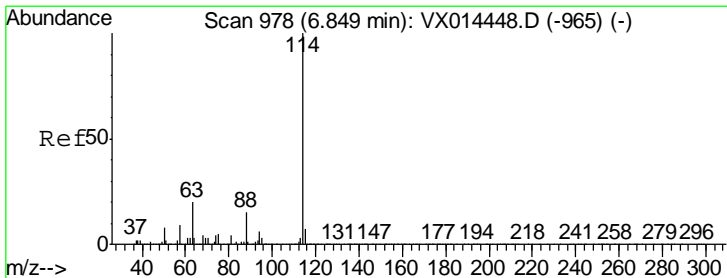
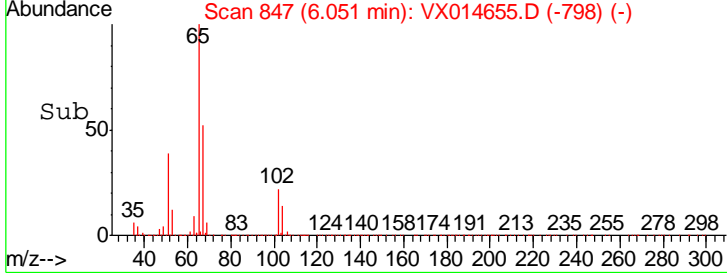
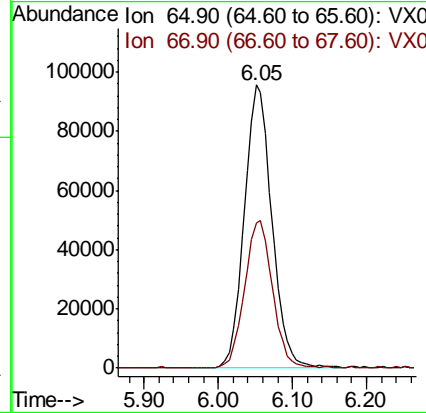
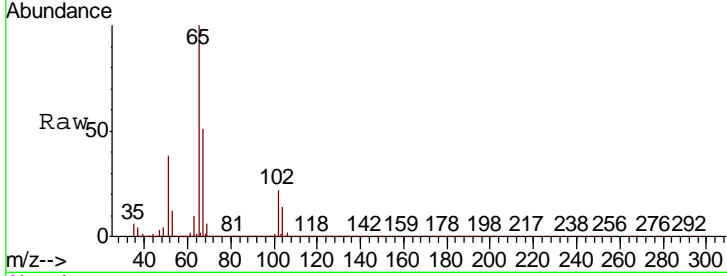




#33  
 1,2-Dichloroethane-d4  
 Concen: 51.713 ug/l  
 RT: 6.05 min Scan# 847  
 Delta R.T. 0.00 min  
 Lab File: VX014655.D  
 Acq: 17 Jan 2020 15:21

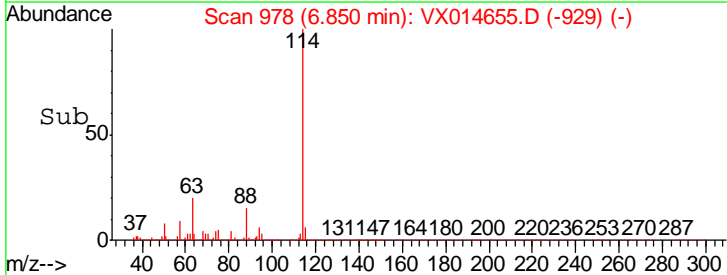
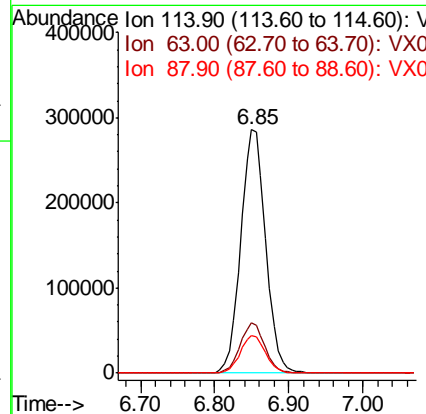
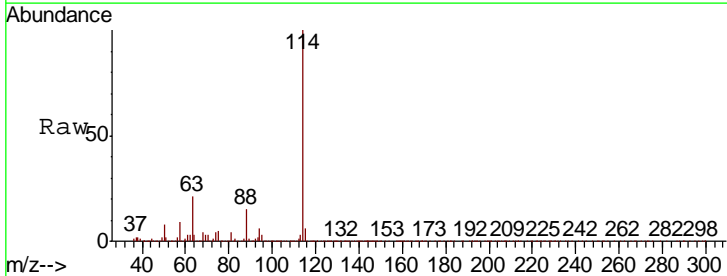
Instrument :  
 MSVOA\_X  
 ClientSampled :

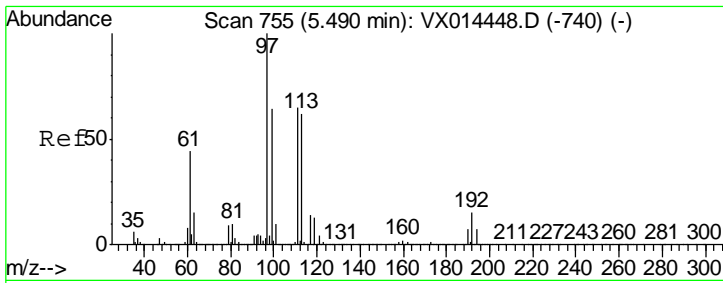
Tgt Ion	Resp	Lower	Upper
65	248134		
67	52.9	0.0	106.2



#34  
 1,4-Difluorobenzene  
 Concen: 50.000 ug/l  
 RT: 6.85 min Scan# 978  
 Delta R.T. 0.00 min  
 Lab File: VX014655.D  
 Acq: 17 Jan 2020 15:21

Tgt Ion	Resp	Lower	Upper
114	671771		
63	20.4	0.0	39.6
88	15.4	0.0	30.8

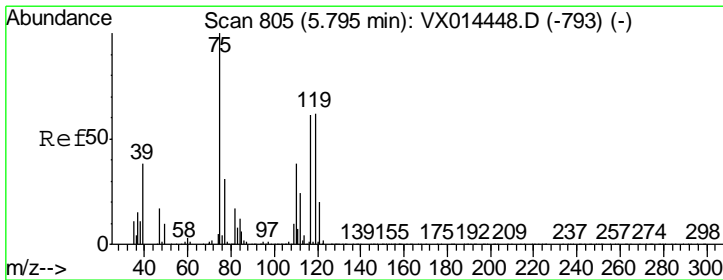
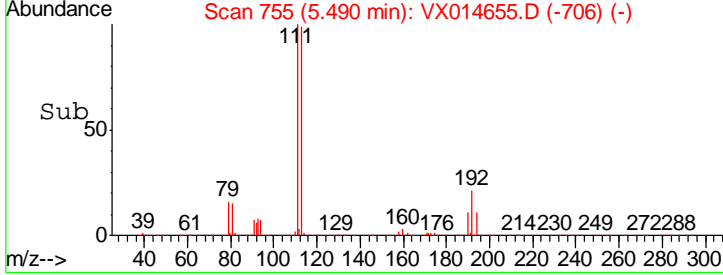
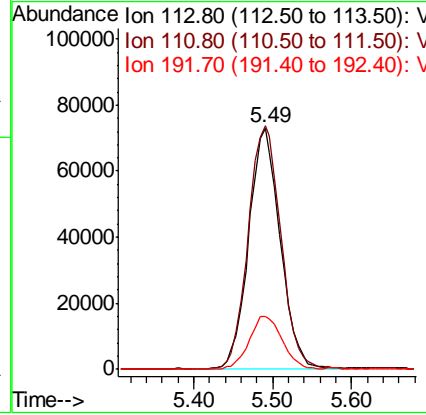
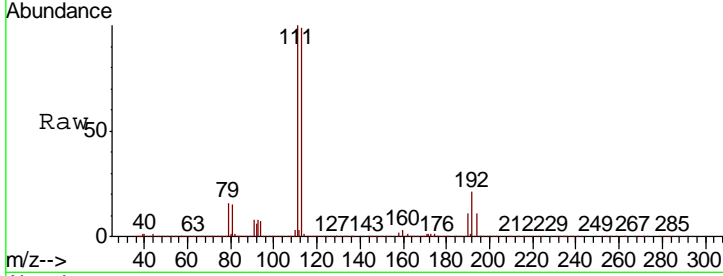




#35  
 Dibromofluoromethane  
 Concen: 49.889 ug/l  
 RT: 5.49 min Scan# 755  
 Delta R.T. 0.00 min  
 Lab File: VX014655.D  
 Acq: 17 Jan 2020 15:21

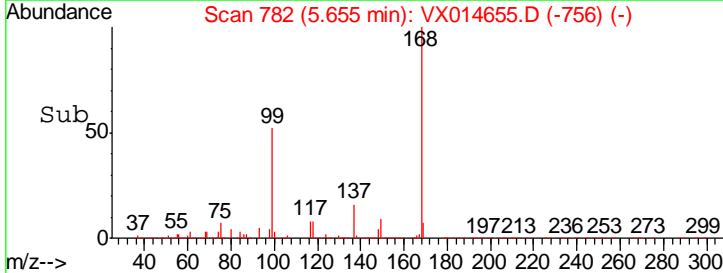
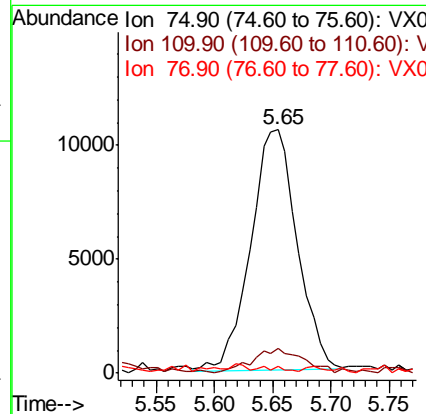
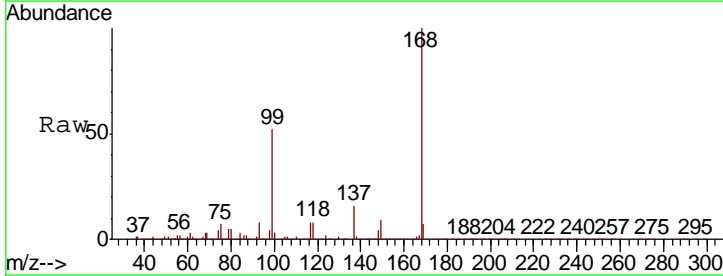
Instrument :  
 MSVOA\_X  
 ClientSampled :

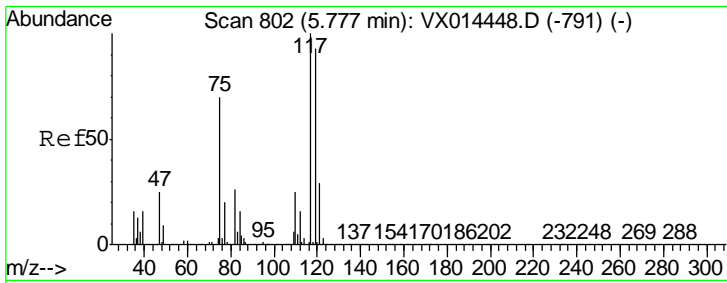
Tgt Ion	Resp	Lower	Upper
113	202876		
113	100		
111	105.2	81.5	122.3
192	23.2	19.2	28.8



#36  
 1,1-Dichloropropene  
 Concen: 4.651 ug/l  
 RT: 5.65 min Scan# 782  
 Delta R.T. -0.14 min  
 Lab File: VX014655.D  
 Acq: 17 Jan 2020 15:21

Tgt Ion	Resp	Lower	Upper
75	29385		
75	100		
110	11.4	18.6	55.8#
77	0.2	24.5	36.7#

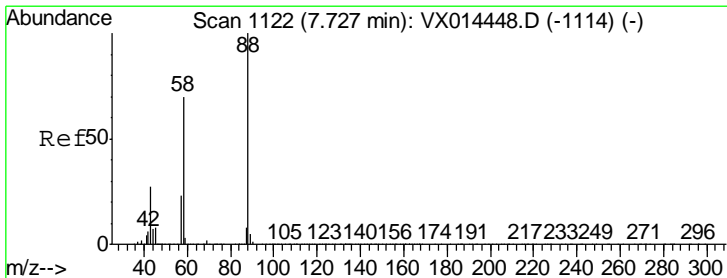
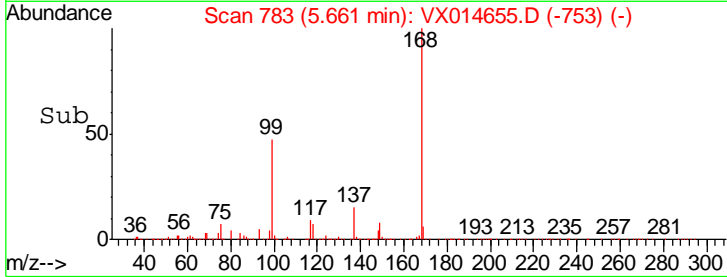
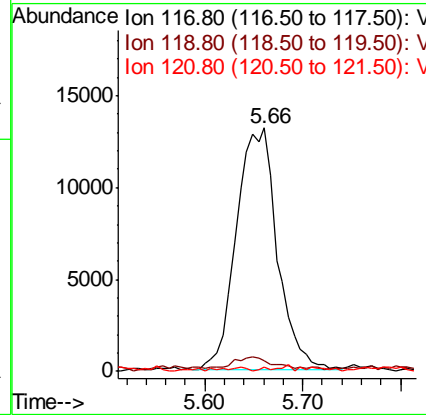
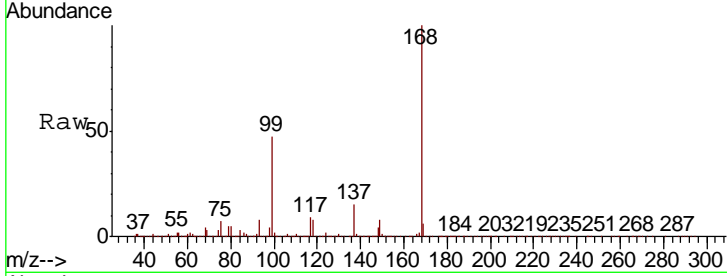




#38  
 Carbon Tetrachloride  
 Concen: 6.540 ug/l  
 RT: 5.66 min Scan# 783  
 Delta R.T. -0.12 min  
 Lab File: VX014655.D  
 Acq: 17 Jan 2020 15:21

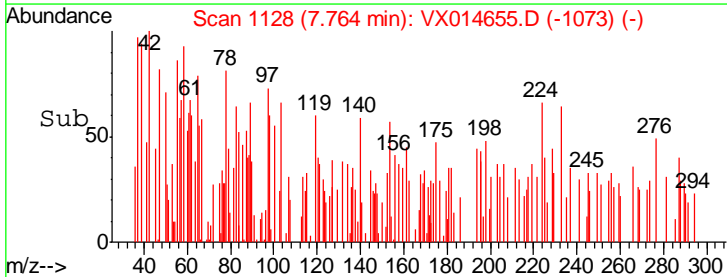
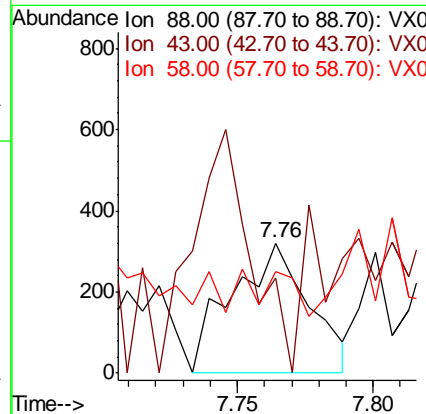
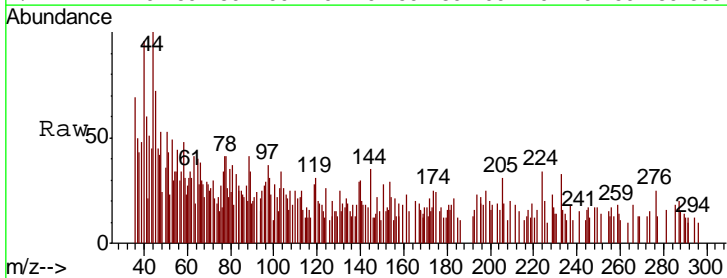
Instrument :  
 MSVOA\_X  
 ClientSampled :

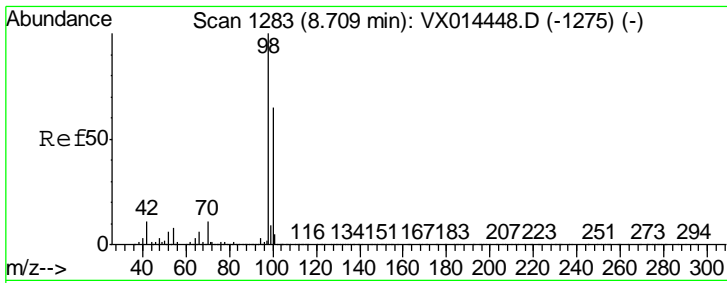
Tgt Ion	Resp	Lower	Upper
117	38018		
119	3.5	73.8	110.8#
121	1.7	23.4	35.0#



#49  
 1,4-Dioxane  
 Concen: 5.600 ug/l  
 RT: 7.76 min Scan# 1128  
 Delta R.T. 0.04 min  
 Lab File: VX014655.D  
 Acq: 17 Jan 2020 15:21

Tgt Ion	Resp	Lower	Upper
88	630		
43	83.2	27.4	41.0#
58	0.0	57.1	85.7#

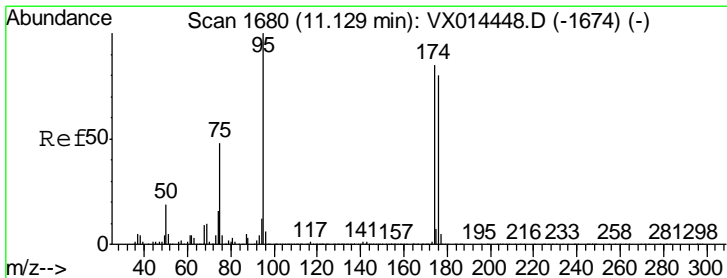
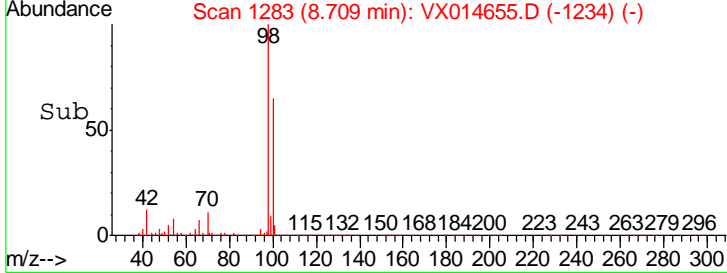
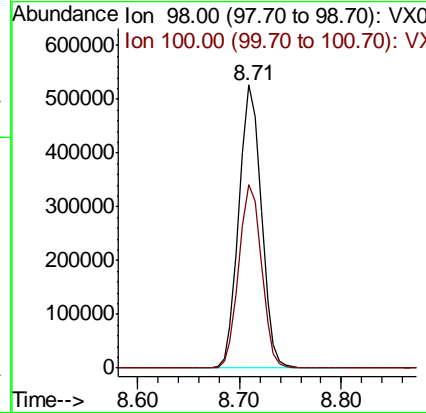
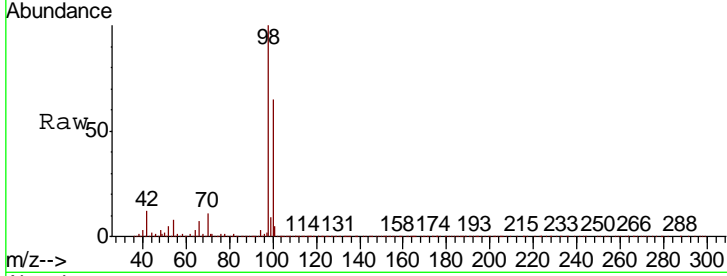




#50  
 Toluene-d8  
 Concen: 50.708 ug/l  
 RT: 8.71 min Scan# 1283  
 Delta R.T. 0.00 min  
 Lab File: VX014655.D  
 Acq: 17 Jan 2020 15:21

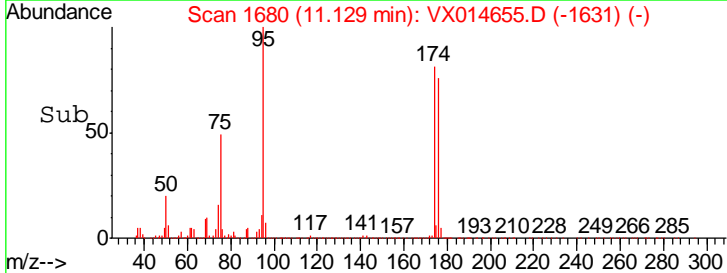
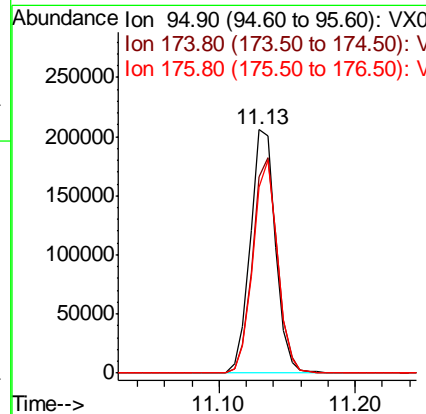
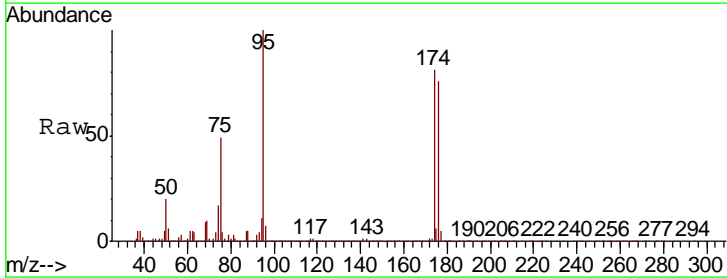
Instrument : MSVOA\_X  
 ClientSampled :

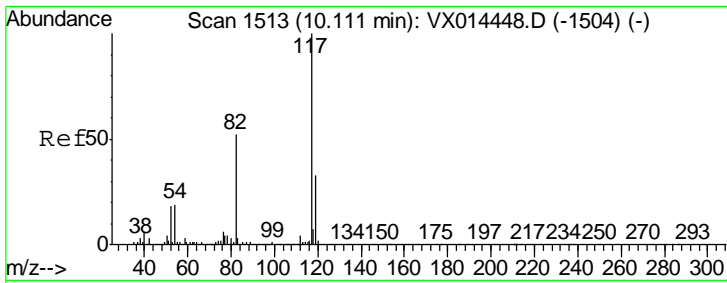
Tgt Ion	Resp	Lower	Upper
98	100		
100	65.6	53.2	79.8



#62  
 4-Bromofluorobenzene  
 Concen: 46.165 ug/l  
 RT: 11.13 min Scan# 1680  
 Delta R.T. 0.00 min  
 Lab File: VX014655.D  
 Acq: 17 Jan 2020 15:21

Tgt Ion	Resp	Lower	Upper
95	100		
174	88.3	0.0	180.8
176	85.8	0.0	172.8

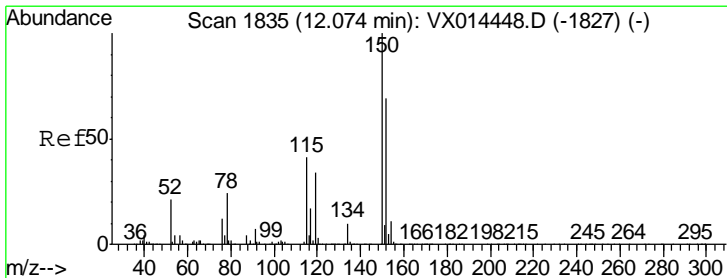
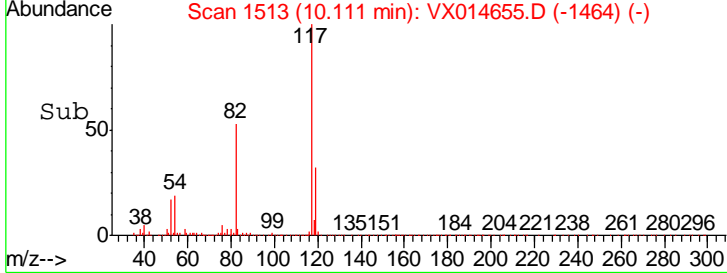
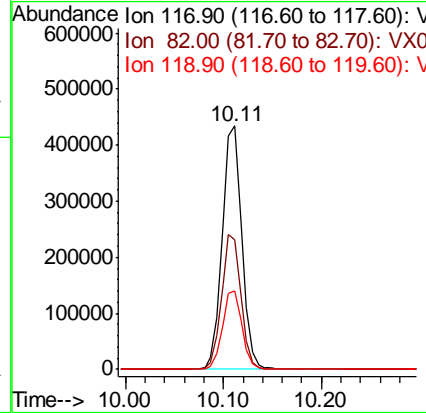
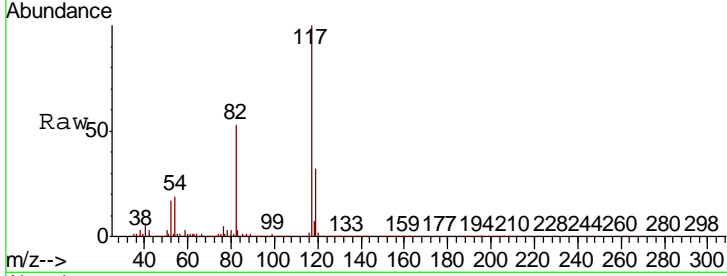




#63  
 Chlorobenzene-d5  
 Concen: 50.000 ug/l  
 RT: 10.11 min Scan# 1513  
 Delta R.T. 0.00 min  
 Lab File: VX014655.D  
 Acq: 17 Jan 2020 15:21

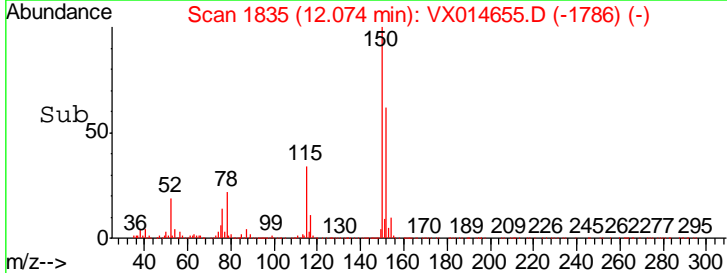
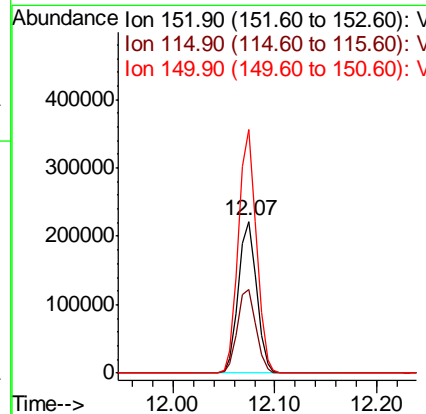
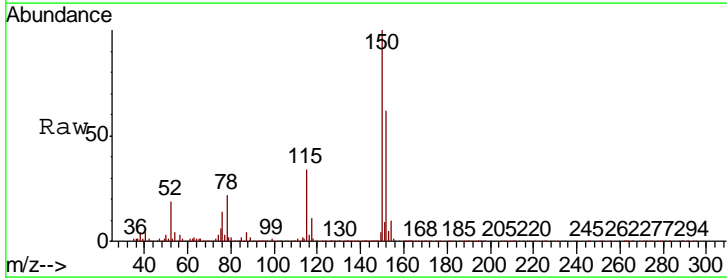
Instrument : MSVOA\_X  
 ClientSampled :

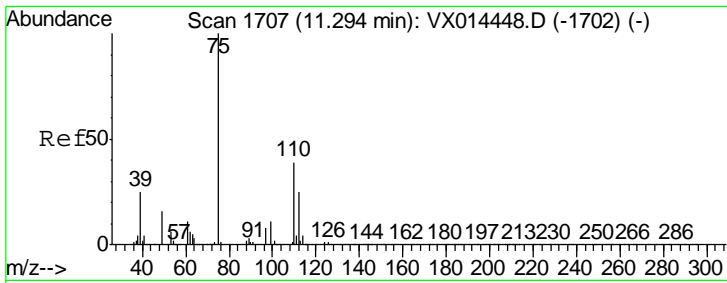
Tgt Ion	Resp	Lower	Upper
117	602380		
82	53.0	41.8	62.6
119	32.3	26.2	39.4



#72  
 1,4-Dichlorobenzene-d4  
 Concen: 50.000 ug/l  
 RT: 12.07 min Scan# 1835  
 Delta R.T. 0.00 min  
 Lab File: VX014655.D  
 Acq: 17 Jan 2020 15:21

Tgt Ion	Resp	Lower	Upper
152	271640		
115	56.0	39.5	118.3
150	158.2	0.0	350.2

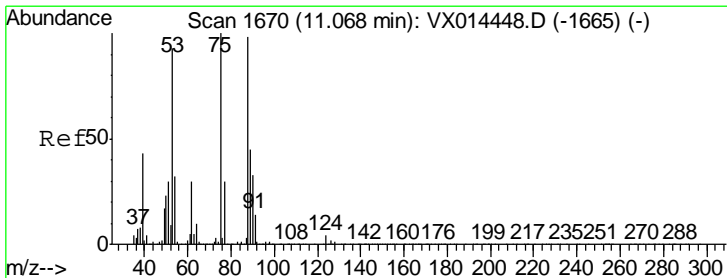
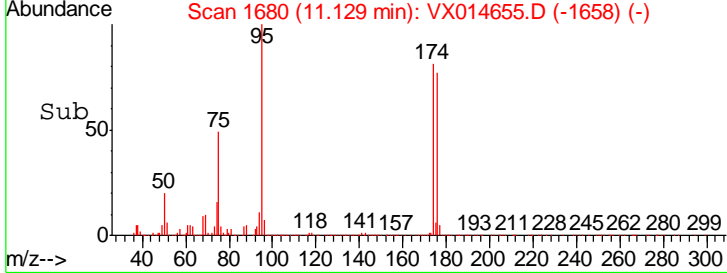
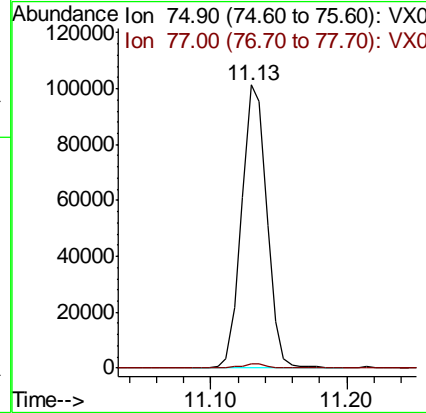
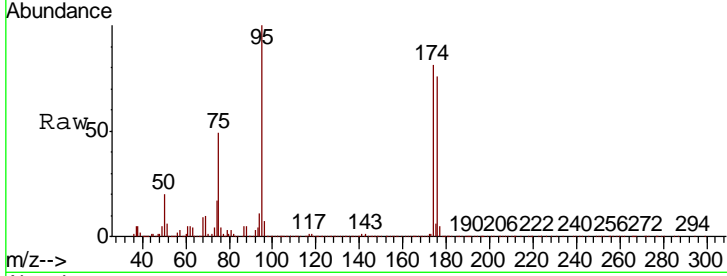




#76  
 1,2,3-Trichloropropane  
 Concen: 23.173 ug/l  
 RT: 11.13 min Scan# 1680  
 Delta R.T. -0.16 min  
 Lab File: VX014655.D  
 Acq: 17 Jan 2020 15:21

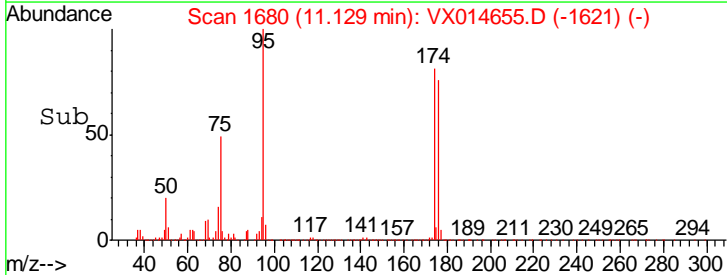
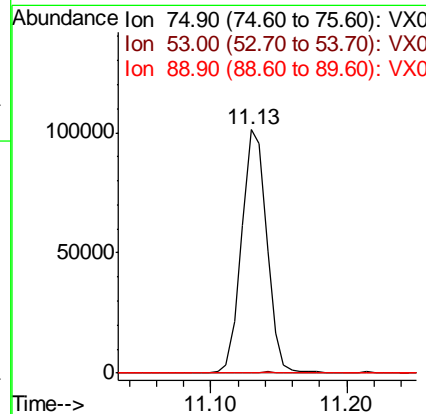
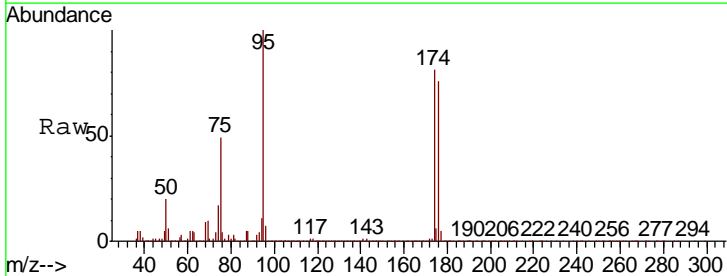
Instrument : MSVOA\_X  
 ClientSampled :

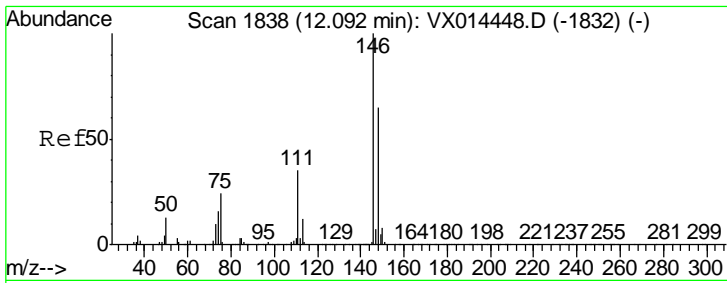
Tgt Ion: 75 Resp: 130237  
 Ion Ratio Lower Upper  
 75 100  
 77 1.5 21.9 65.7#



#81  
 trans-1,4-Dichloro-2-butene  
 Concen: 61.264 ug/l  
 RT: 11.13 min Scan# 1680  
 Delta R.T. 0.06 min  
 Lab File: VX014655.D  
 Acq: 17 Jan 2020 15:21

Tgt Ion: 75 Resp: 130237  
 Ion Ratio Lower Upper  
 75 100  
 53 0.2 74.8 112.2#  
 89 0.0 36.3 54.5#



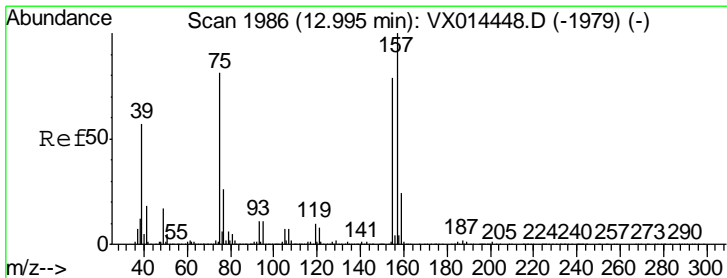
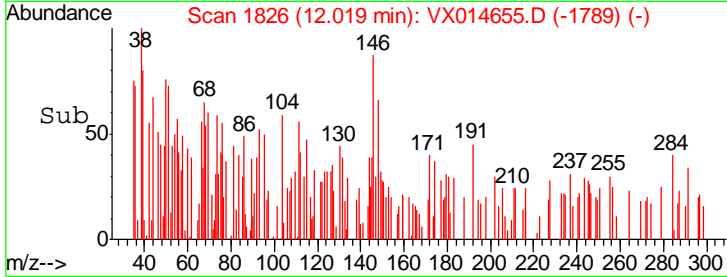
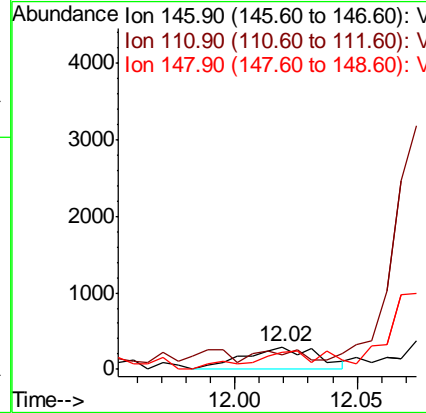
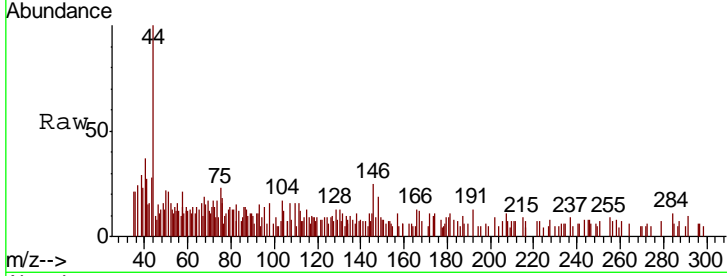


#88  
 1,4-Dichlorobenzene  
 Concen: Below Cal  
 RT: 12.02 min Scan# 1826  
 Delta R.T. -0.07 min  
 Lab File: VX014655.D  
 Acq: 17 Jan 2020 15:21

Instrument : MSVOA\_X  
 ClientSampled :

Tgt Ion: 146 Resp: 617

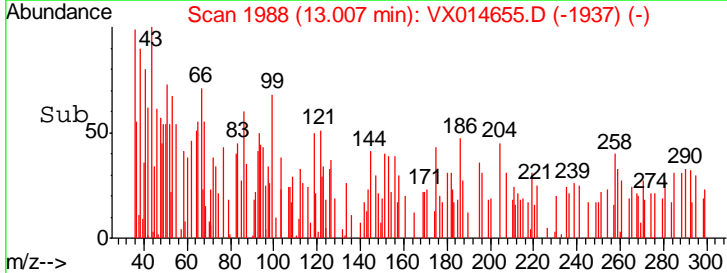
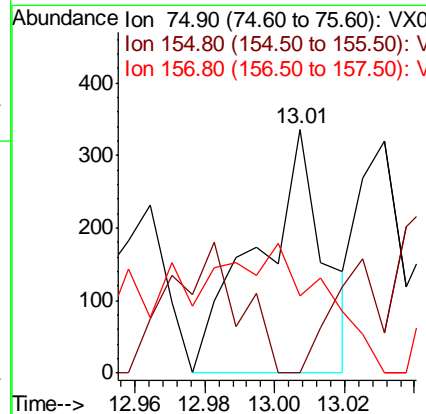
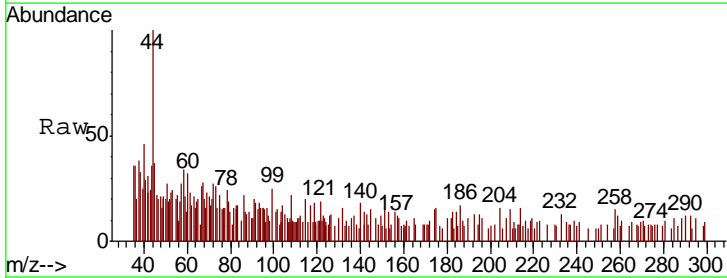
Ion	Ratio	Lower	Upper
146	100		
111	35.5	18.1	54.1
148	62.2	32.1	96.3

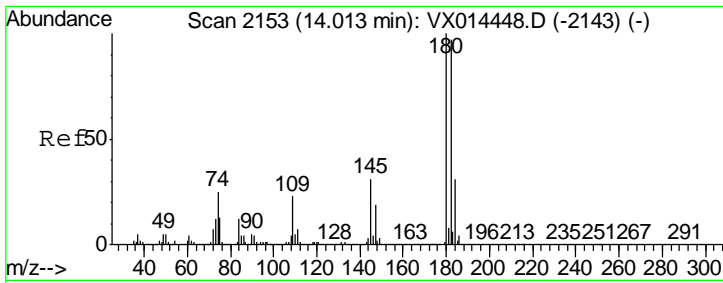


#92  
 1,2-Dibromo-3-Chloropropane  
 Concen: 0.322 ug/l  
 RT: 13.01 min Scan# 1988  
 Delta R.T. 0.01 min  
 Lab File: VX014655.D  
 Acq: 17 Jan 2020 15:21

Tgt Ion: 75 Resp: 443

Ion	Ratio	Lower	Upper
75	100		
155	0.0	48.7	146.1#
157	81.5	62.0	185.9





#96  
 1,2,3-Trichlorobenzene  
 Concen: Below Cal  
 RT: 14.00 min Scan# 2151  
 Delta R.T. -0.01 min  
 Lab File: VX014655.D  
 Acq: 17 Jan 2020 15:21

Instrument : MSVOA\_X  
 ClientSampled :

Tot Ion	180	182	145	Resp	Lower	Upper
334	100	100.3	96.7		47.9	143.6
					14.8	44.3#

