

Data Path : Z:\voasrv\HPCHEM1\MSVOA_X\Data\VX011823\
 Data File : VX033784.D
 Acq On : 18 Jan 2023 19:24
 Operator : JC/MD
 Sample : 01209-01
 Misc : 5.0mL/MSVOA_X/WATER
 ALS Vial : 21 Sample Multiplier: 1

Instrument :
 MSVOA_X
ClientSampleId :
 TWP-03

Quant Time: Jan 19 03:34:07 2023
 Quant Method : Z:\voasrv\HPCHEM1\MSVOA_X\Method\624X011823W.M
 Quant Title : METHOD 624 VOLATILE ORGANIC ANALYSIS
 QLast Update : Wed Jan 18 14:40:07 2023
 Response via : Initial Calibration

Compound	R.T.	QIon	Response	Conc	Units	Dev(Min)

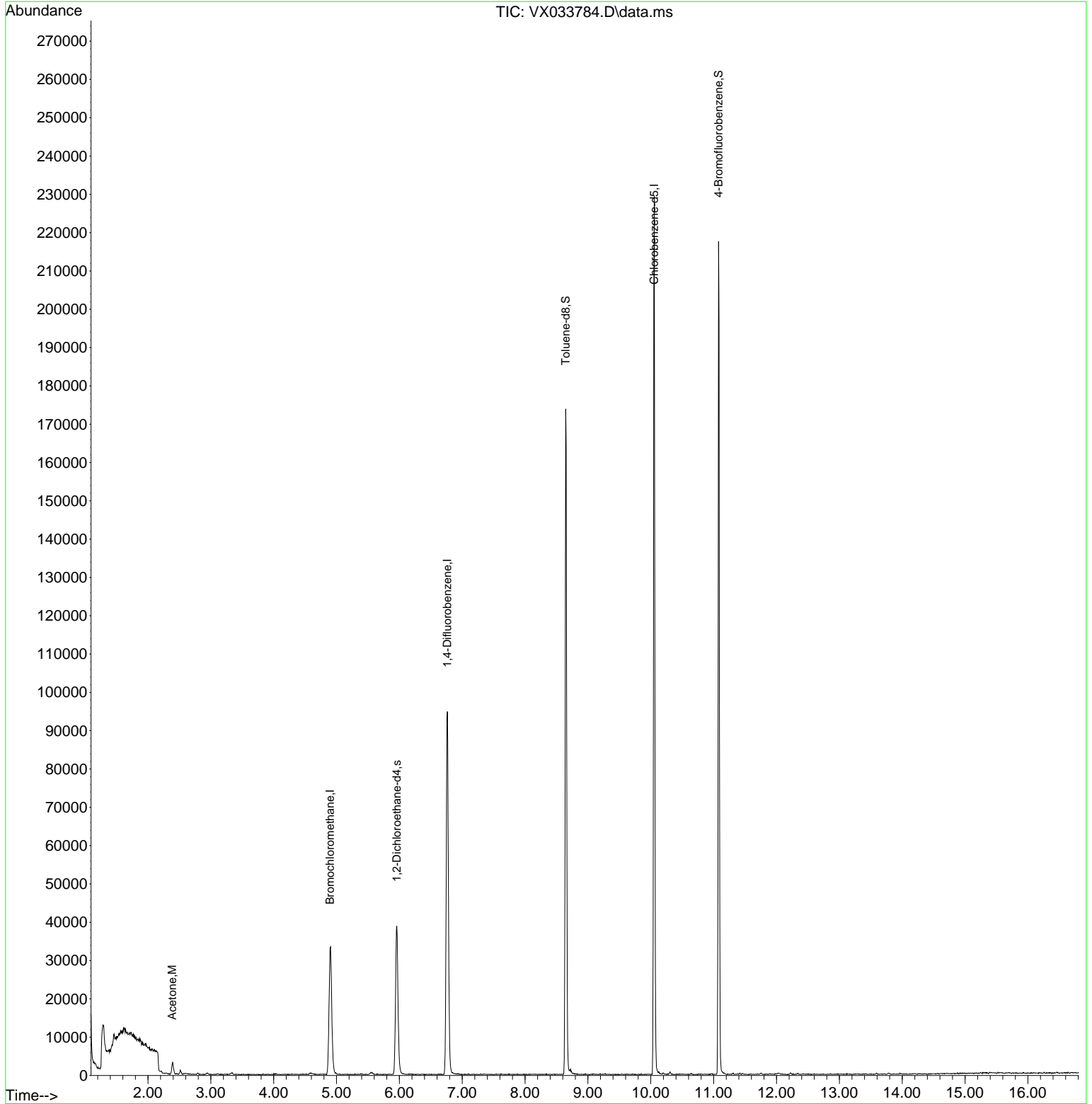
Internal Standards						
1) Bromochloromethane	4.898	128	15389	30.000	ug/l	0.00
28) 1,4-Difluorobenzene	6.763	114	103892	30.000	ug/l	0.00
57) Chlorobenzene-d5	10.055	117	110821	30.000	ug/l	0.00
System Monitoring Compounds						
27) 1,2-Dichloroethane-d4	5.958	65	38278	32.142	ug/l	0.00
Spiked Amount	30.000	Range	91 - 110	Recovery	=	107.133%
60) 4-Bromofluorobenzene	11.079	95	57610	29.079	ug/l	0.00
Spiked Amount	30.000	Range	63 - 112	Recovery	=	96.933%
63) Toluene-d8	8.647	98	106441	30.105	ug/l	0.00
Spiked Amount	30.000	Range	91 - 112	Recovery	=	100.333%
Target Compounds						
15) Acetone	2.386	58	1073	4.589	ug/l	Qvalue 82

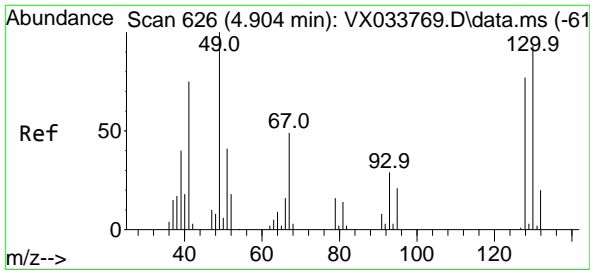
(#) = qualifier out of range (m) = manual integration (+) = signals summed

Data Path : Z:\voasrv\HPCHEM1\MSVOA_X\Data\VX011823\
Data File : VX033784.D
Acq On : 18 Jan 2023 19:24
Operator : JC/MD
Sample : 01209-01
Misc : 5.0mL/MSVOA_X/WATER
ALS Vial : 21 Sample Multiplier: 1

Instrument :
MSVOA_X
ClientSampleId :
TWP-03

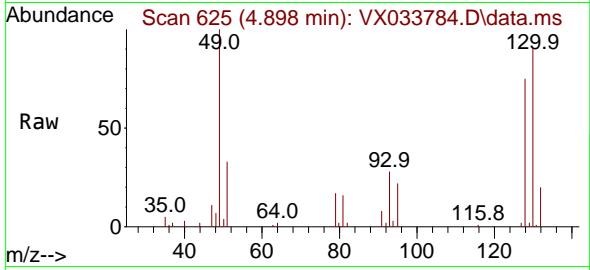
Quant Time: Jan 19 03:34:07 2023
Quant Method : Z:\voasrv\HPCHEM1\MSVOA_X\Method\624X011823W.M
Quant Title : METHOD 624 VOLATILE ORGANIC ANALYSIS
QLast Update : Wed Jan 18 14:40:07 2023
Response via : Initial Calibration



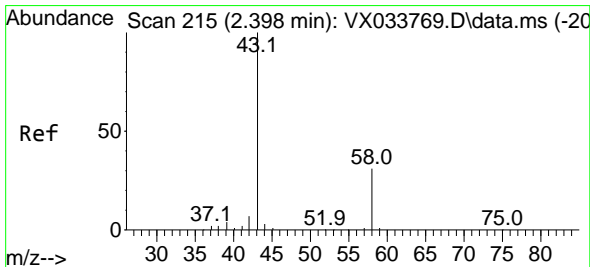
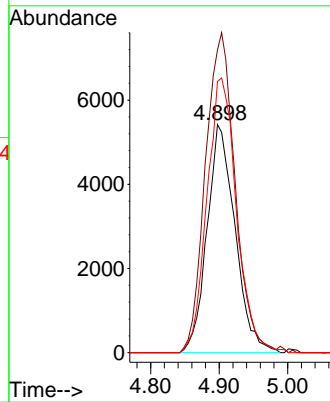
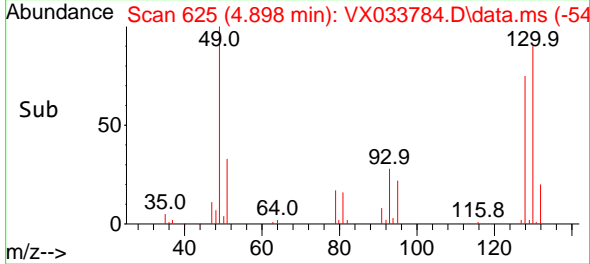


#1
 Bromochloromethane
 Concen: 30.000 ug/l
 RT: 4.898 min Scan# 61
 Delta R.T. -0.006 min
 Lab File: VX033784.D
 Acq: 18 Jan 2023 19:24

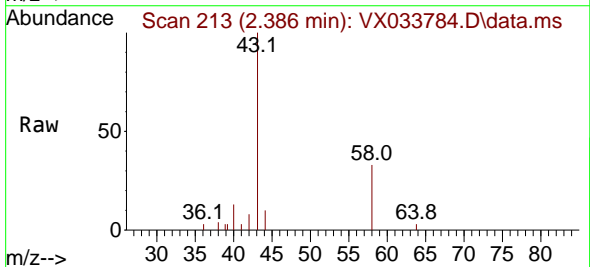
Instrument :
 MSVOA_X
 ClientSampleId :
 TWP-03



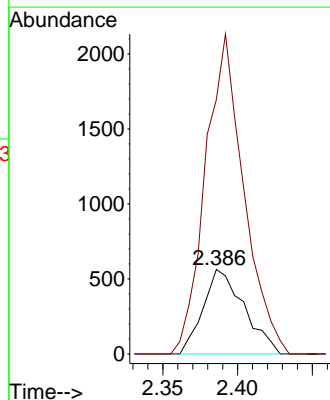
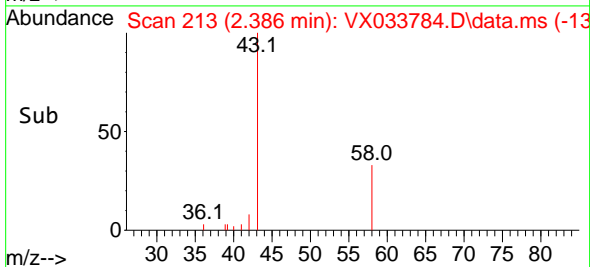
Tgt Ion:128 Resp: 15389
 Ion Ratio Lower Upper
 128 100
 49 148.5 0.0 369.0
 130 127.3 0.0 327.5

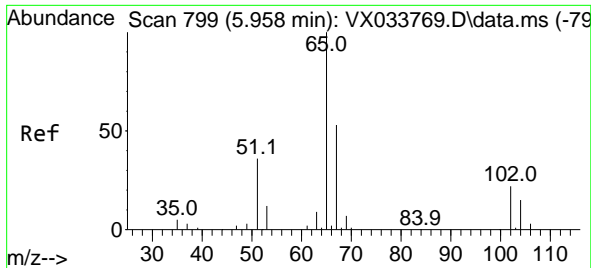


#15
 Acetone
 Concen: 4.589 ug/l
 RT: 2.386 min Scan# 213
 Delta R.T. -0.012 min
 Lab File: VX033784.D
 Acq: 18 Jan 2023 19:24



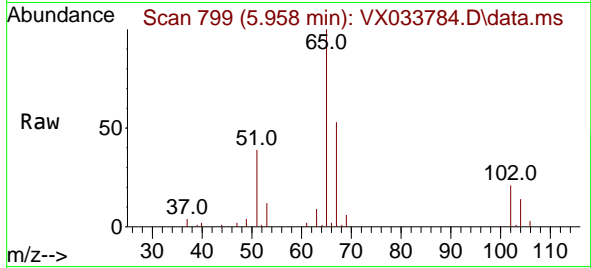
Tgt Ion: 58 Resp: 1073
 Ion Ratio Lower Upper
 58 100
 43 286.5 258.6 388.0



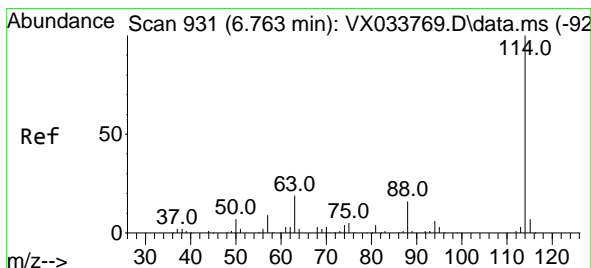
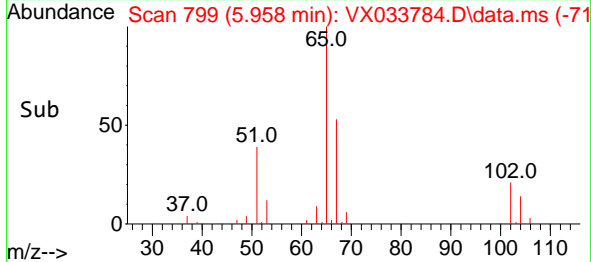
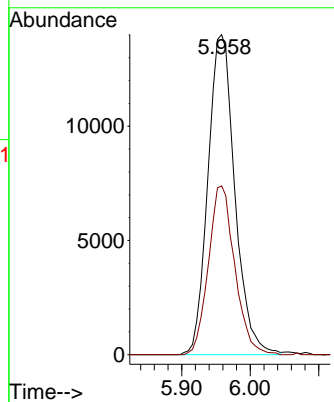


#27
 1,2-Dichloroethane-d4
 Concen: 32.142 ug/l
 RT: 5.958 min Scan# 799
 Delta R.T. 0.000 min
 Lab File: VX033784.D
 Acq: 18 Jan 2023 19:24

Instrument : MSVOA_X
 ClientSampleId : TWP-03

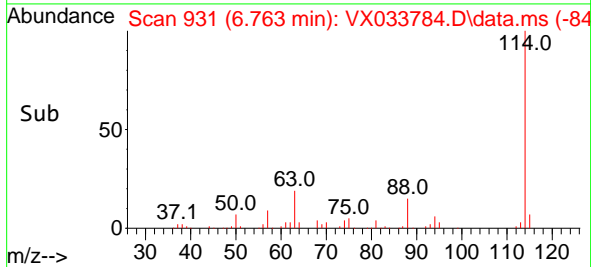
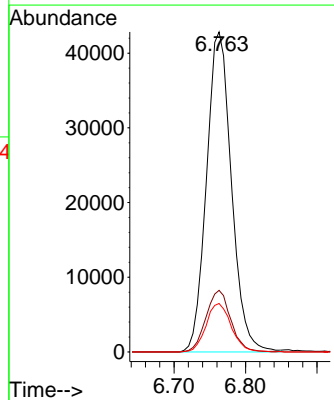
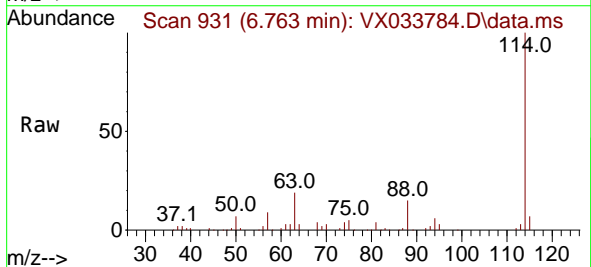


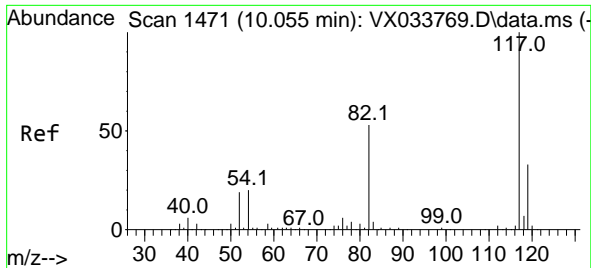
Tgt Ion: 65 Resp: 38278
 Ion Ratio Lower Upper
 65 100
 67 51.5 43.0 64.4



#28
 1,4-Difluorobenzene
 Concen: 30.000 ug/l
 RT: 6.763 min Scan# 931
 Delta R.T. 0.000 min
 Lab File: VX033784.D
 Acq: 18 Jan 2023 19:24

Tgt Ion:114 Resp: 103892
 Ion Ratio Lower Upper
 114 100
 63 19.1 15.2 22.8
 88 15.3 12.4 18.6

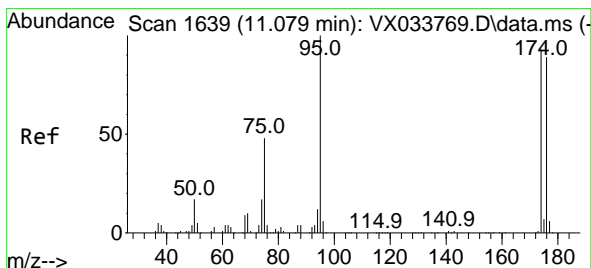
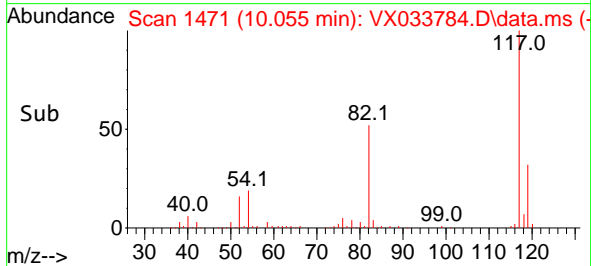
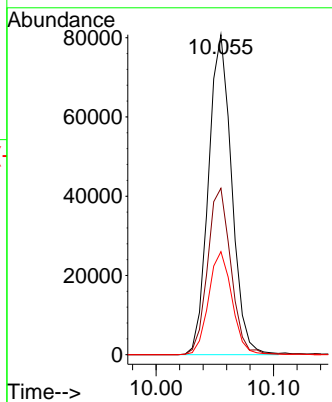
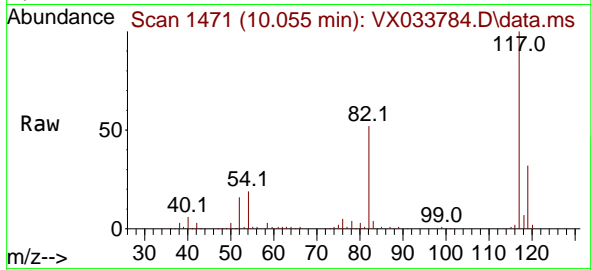




#57
 Chlorobenzene-d5
 Concen: 30.000 ug/l
 RT: 10.055 min Scan# 14
 Delta R.T. 0.000 min
 Lab File: VX033784.D
 Acq: 18 Jan 2023 19:24

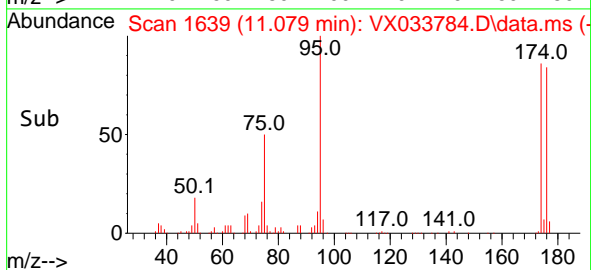
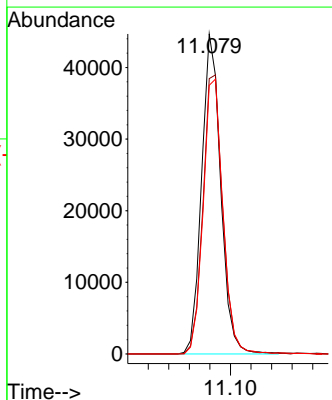
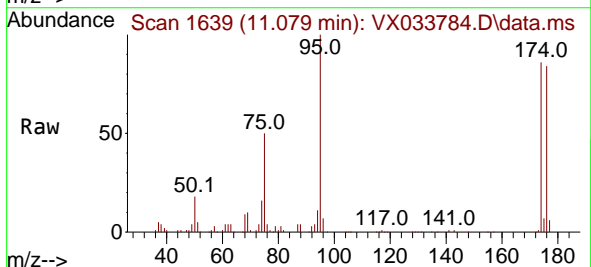
Instrument : MSVOA_X
 ClientSampleId : TWP-03

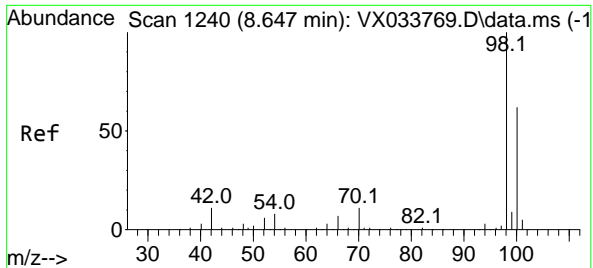
Tgt Ion	Resp	Lower	Upper
117	110821		
82	52.3	42.6	64.0
119	32.6	26.4	39.6



#60
 4-Bromofluorobenzene
 Concen: 29.079 ug/l
 RT: 11.079 min Scan# 1639
 Delta R.T. 0.000 min
 Lab File: VX033784.D
 Acq: 18 Jan 2023 19:24

Tgt Ion	Resp	Lower	Upper
95	57610		
174	90.4	74.6	111.8
176	88.9	72.2	108.2





#63
 Toluene-d8
 Concen: 30.105 ug/l
 RT: 8.647 min Scan# 11
 Delta R.T. 0.000 min
 Lab File: VX033784.D
 Acq: 18 Jan 2023 19:24

Instrument : MSVOA_X
 ClientSampleId : TWP-03

Tgt Ion: 98 Resp: 106441
 Ion Ratio Lower Upper
 98 100
 100 66.8 52.7 79.1

