

Data Path : Z:\VOASRV\HPCHEM1\MSVOA X\DATA\VX012119\  
 Data File : VX007154.D  
 Acq On : 21 Jan 2019 13:10  
 Operator : JC/SP  
 Sample : K1198-02  
 Misc : 5.0mL/MSVOA X/WATER  
 ALS Vial : 7 Sample Multiplier: 1

Instrument :  
 MSVOA\_X  
 ClientSampleId :  
 SA-TW523-3337

Integration Parameters: RTEINT.P

Integrator: RTE  
 Smoothing : ON Filtering: 5  
 Sampling : 1 Min Area: 3 % of largest Peak  
 Start Thrs: 0.2 Max Peaks: 100  
 Stop Thrs : 0 Peak Location: TOP

If leading or trailing edge < 100 prefer < Baseline drop else tangent >  
 Peak separation: 5

Method : Z:\VOASRV\HPCHEM1\MSVOA\_X\METHOD\82X010819W.M  
 Title : SW846 8260

Signal : TIC

peak #	R.T. min	first scan	max scan	last scan	PK TY	peak height	corr. area	corr. % max.	% of total
1	1.398	37	40	47	rBV2	19417	34143	1.27%	0.213%
2	1.635	67	79	82	rVB4	36484	99106	3.69%	0.619%
3	2.379	196	201	208	rBV2	39361	63496	2.36%	0.397%
4	3.696	409	417	431	rVB	209497	504409	18.77%	3.151%
5	5.501	701	713	726	rBV	323074	927682	34.51%	5.795%
6	5.665	729	740	754	rVV	544625	1522656	56.65%	9.511%
7	6.068	796	806	819	rBV	332209	860329	32.01%	5.374%
8	6.860	926	936	954	rBV	833481	1923596	71.56%	12.016%
9	8.713	1231	1240	1249	rBV	1735547	2687959	100.00%	16.790%
10	10.110	1463	1469	1479	rBV	1749098	2388776	88.87%	14.921%
11	10.353	1506	1509	1515	rVB2	19123	28970	1.08%	0.181%
12	11.134	1631	1637	1650	rBV	1506337	1950858	72.58%	12.186%
13	11.945	1767	1770	1775	rVB	40890	50399	1.87%	0.315%
14	12.024	1777	1783	1787	rBV2	46276	63009	2.34%	0.394%
15	12.079	1787	1792	1800	rVB	1971009	2551350	94.92%	15.937%
16	12.390	1835	1843	1848	rBV	54860	78098	2.91%	0.488%
17	12.755	1899	1903	1910	rVB	46148	64688	2.41%	0.404%
18	12.896	1920	1926	1933	rVB	26722	41116	1.53%	0.257%
19	13.645	2044	2049	2053	rBV	64108	84405	3.14%	0.527%
20	13.719	2059	2061	2069	rVB	31251	43457	1.62%	0.271%
21	13.981	2098	2104	2108	rBV	28224	40559	1.51%	0.253%

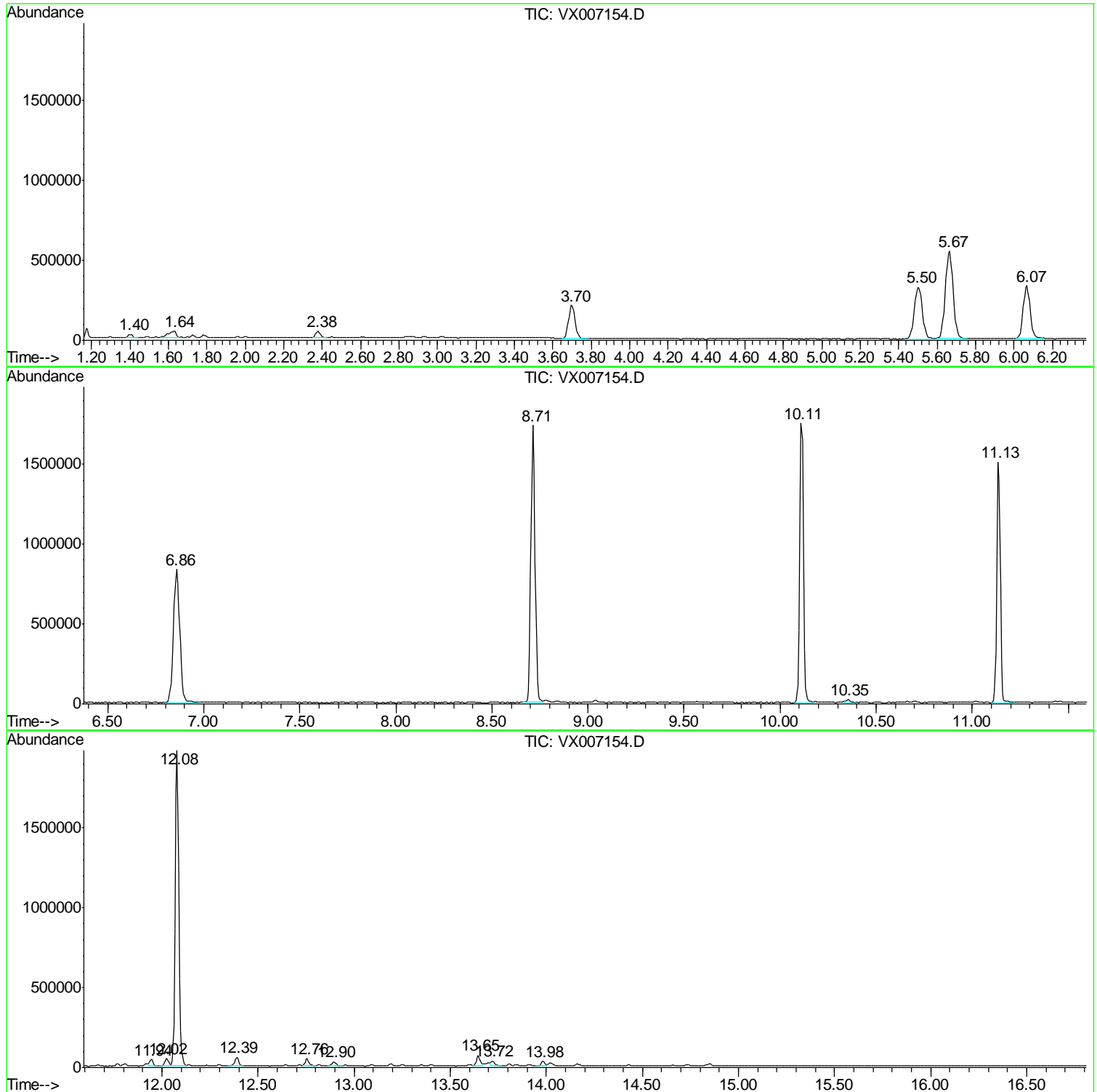
Sum of corrected areas: 16009061

Data Path : Z:\VOASRV\HPCHEM1\MSVOA X\DATA\VX012119\  
Data File : VX007154.D  
Acq On : 21 Jan 2019 13:10  
Operator : JC/SP  
Sample : K1198-02  
Misc : 5.0mL/MSVOA X/WATER  
ALS Vial : 7 Sample Multiplier: 1

Instrument :  
MSVOA\_X  
ClientSampled :  
SA-TW523-3337

Quant Method : Z:\VOASRV\HPCHEM1\MSVOA\_X\METHOD\82X010819W.M  
Quant Title : SW846 8260

TIC Library : C:\DATABASE\NIST11.L  
TIC Integration Parameters: LSCINT.P



Data Path : Z:\VOASRV\HPCHEM1\MSVOA\_X\DATA\VX012119\  
Data File : VX007154.D  
Acq On : 21 Jan 2019 13:10  
Operator : JC/SP  
Sample : K1198-02  
Misc : 5.0mL/MSVOA\_X/WATER  
ALS Vial : 7 Sample Multiplier: 1

Instrument :  
MSVOA\_X  
ClientSampleId :  
SA-TW523-3337

Quant Method : Z:\VOASRV\HPCHEM1\MSVOA\_X\METHOD\82X010819W.M  
Quant Title : SW846 8260

TIC Library : C:\DATABASE\NIST11.L  
TIC Integration Parameters: LSCINT.P

No Library Search Compounds Detected

\*\*\*\*\*

Data Path : Z:\VOASRV\HPCHEM1\MSVOA\_X\DATA\VX012119\  
Data File : VX007154.D  
Acq On : 21 Jan 2019 13:10  
Operator : JC/SP  
Sample : K1198-02  
Misc : 5.0mL/MSVOA\_X/WATER  
ALS Vial : 7 Sample Multiplier: 1

Instrument :  
MSVOA\_X  
ClientSampleId :  
SA-TW523-3337

Quant Method : Z:\VOASRV\HPCHEM1\MSVOA\_X\METHOD\82X010819W.M  
Quant Title : SW846 8260

TIC Library : C:\DATABASE\NIST11.L  
TIC Integration Parameters: LSCINT.P

TIC Top Hit name	RT	EstConc	Units	Response	--Internal Standard--			
					#	RT	Resp	Conc

---