

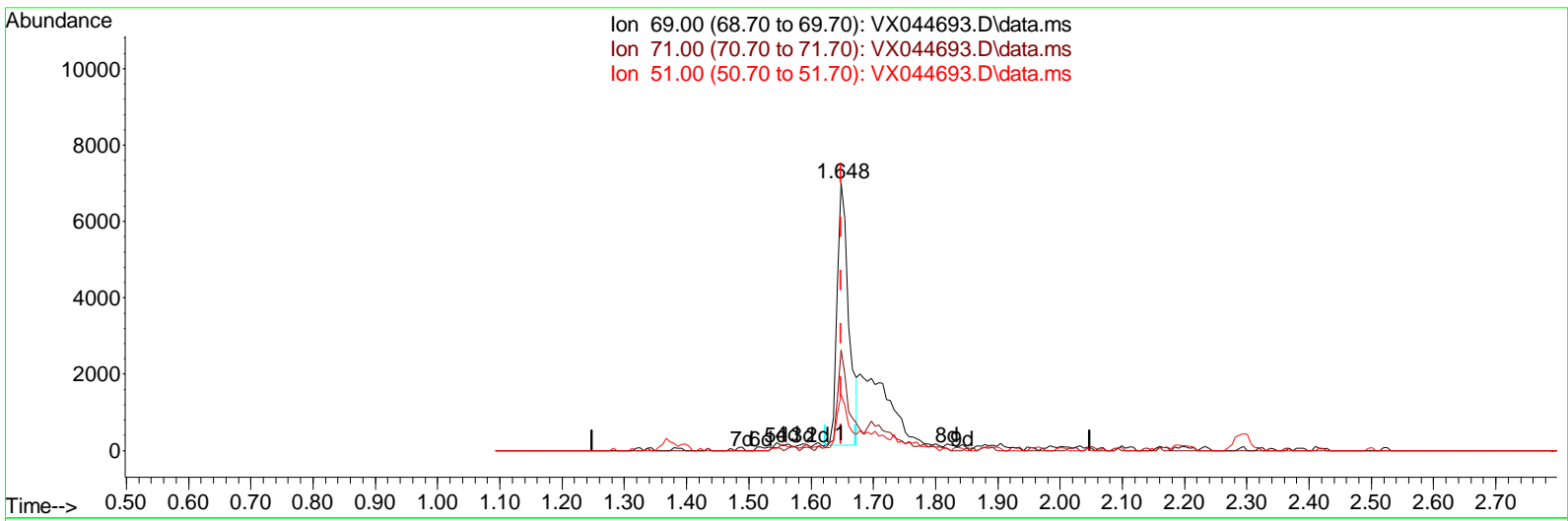
Data Path : Z:\voasrv\HPCHEM1\MSVOA_X\Data\VX012225\
 Data File : VX044693.D
 Acq On : 22 Jan 2025 12:40
 Operator : JC/MD
 Sample : Q1131-02
 Misc : 5.0mL/MSVOA_X/WATER
 ALS Vial : 4 Sample Multiplier: 1

Instrument :
 MSVOA_X
ClientSampleId :
 JNLE5

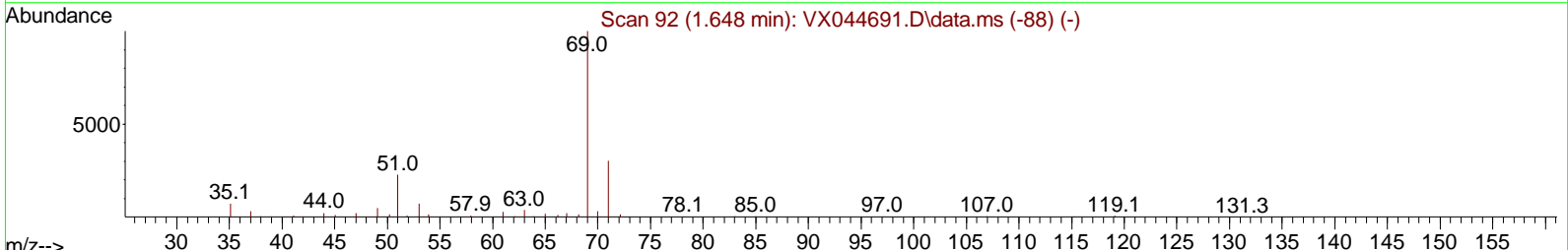
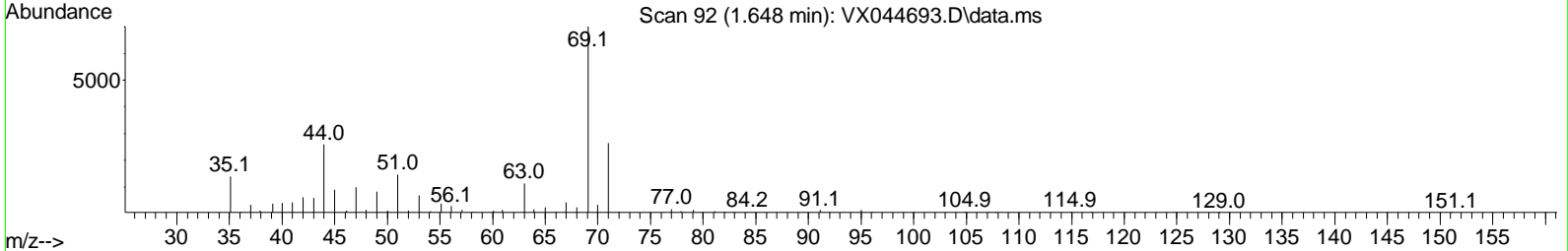
Manual IntegrationsAPPROVED

Reviewed By :John Carlone 01/23/2025
 Supervised By :Mahesh Dadoda 01/24/2025

Quant Time: Jan 23 00:51:45 2025
 Quant Method : Z:\voasrv\HPCHEM1\MSVOA_X\Method\SFAMXLM012125WMA.M
 Quant Title : VOC Analysis
 QLast Update : Thu Jan 23 00:51:10 2025
 Response via : Initial Calibration



Ion 69.00 (68.70 to 69.70): VX044693.D\data.ms
 Ion 71.00 (70.70 to 71.70): VX044693.D\data.ms
 Ion 51.00 (50.70 to 51.70): VX044693.D\data.ms



TIC: VX044693.D\data.ms

(7) Chloroethane-d5 (S)

1.648min (-0.000) 20.46 ug/L

| response | 9004 |
|----------|---------------|
| Ion | Exp% Act% |
| 69.00 | 100.00 100.00 |
| 71.00 | 24.30 39.07# |
| 51.00 | 12.50 19.85# |
| 0.00 | 0.00 0.00 |

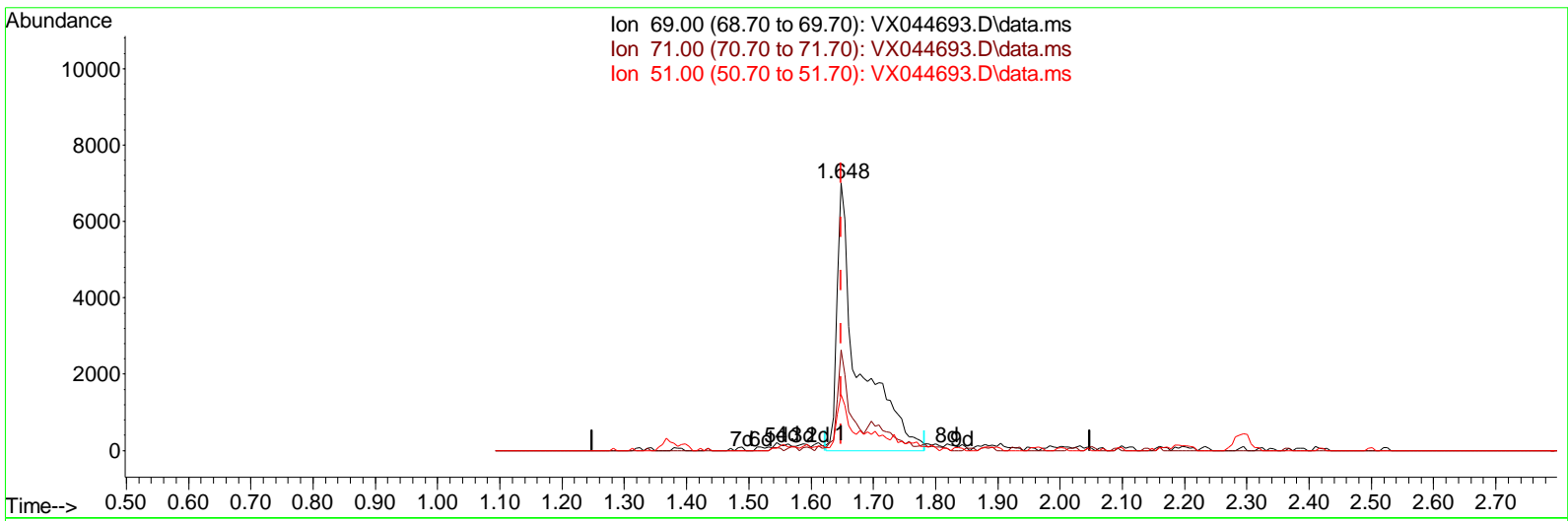
Data Path : Z:\voasrv\HPCHEM1\MSVOA_X\Data\VX012225\
 Data File : VX044693.D
 Acq On : 22 Jan 2025 12:40
 Operator : JC/MD
 Sample : Q1131-02
 Mi sc : 5.0mL/MSVOA_X/WATER
 ALS Vial : 4 Sample Multiplier: 1

Instrument :
 MSVOA_X
ClientSampleId :
 JNLE5

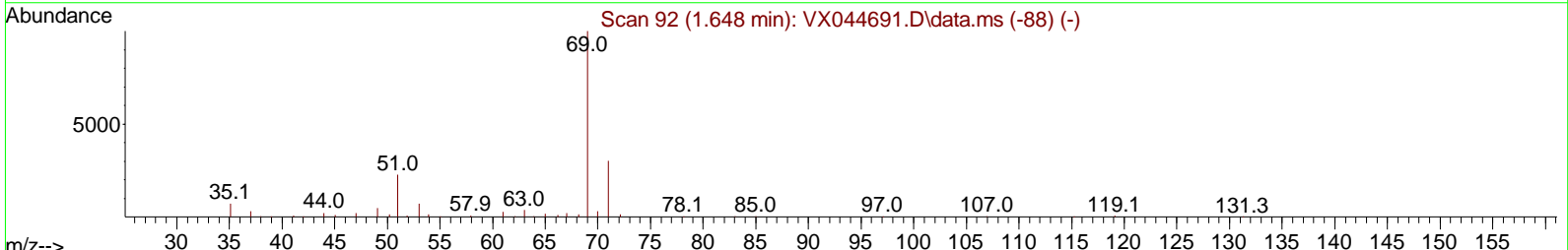
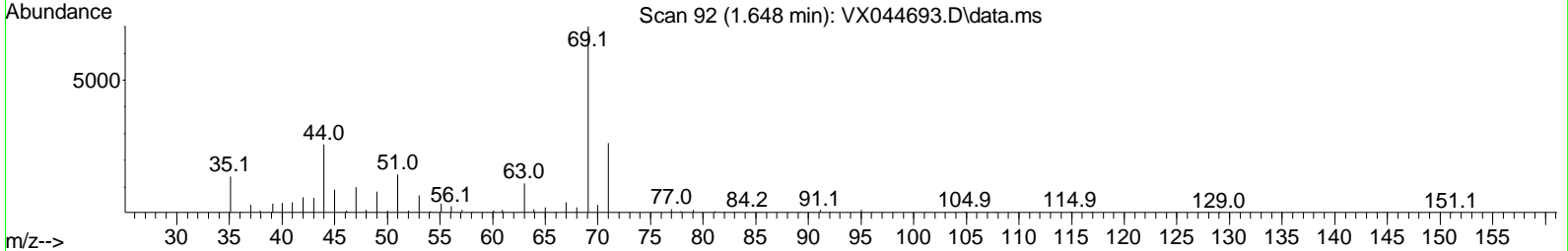
Manual IntegrationsAPPROVED

Reviewed By :John Carlone 01/23/2025
 Supervised By :Mahesh Dadoda 01/24/2025

Quant Time: Jan 23 00:51:45 2025
 Quant Method : Z:\voasrv\HPCHEM1\MSVOA_X\Method\SFAMXLM012125WMA.M
 Quant Title : VOC Analysis
 QLast Update : Thu Jan 23 00:51:10 2025
 Response via : Initial Calibration



Ion 69.00 (68.70 to 69.70): VX044693.D\data.ms
 Ion 71.00 (70.70 to 71.70): VX044693.D\data.ms
 Ion 51.00 (50.70 to 51.70): VX044693.D\data.ms



TIC: VX044693.D\data.ms

(7) Chloroethane-d5 (S)

1.648min (-0.000) 38.24 ug/L m

| response | 16826 |
|----------|---------------|
| Ion | Exp% Act% |
| 69.00 | 100.00 100.00 |
| 71.00 | 24.30 20.91 |
| 51.00 | 12.50 10.62 |
| 0.00 | 0.00 0.00 |

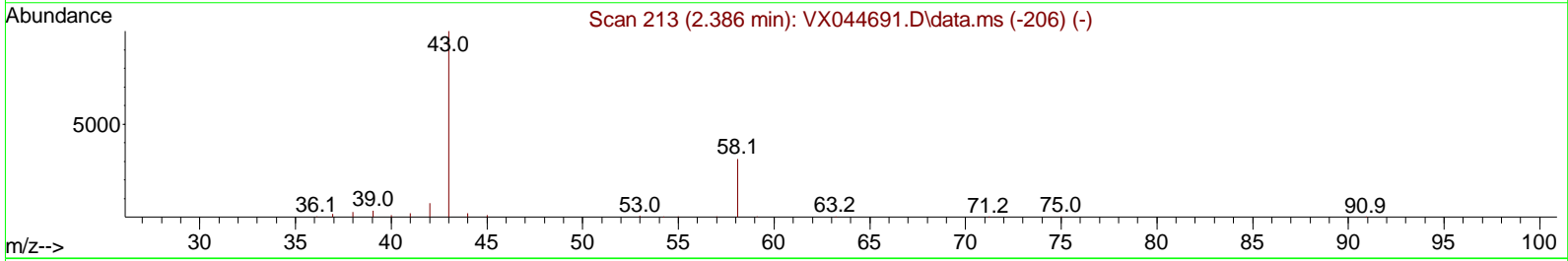
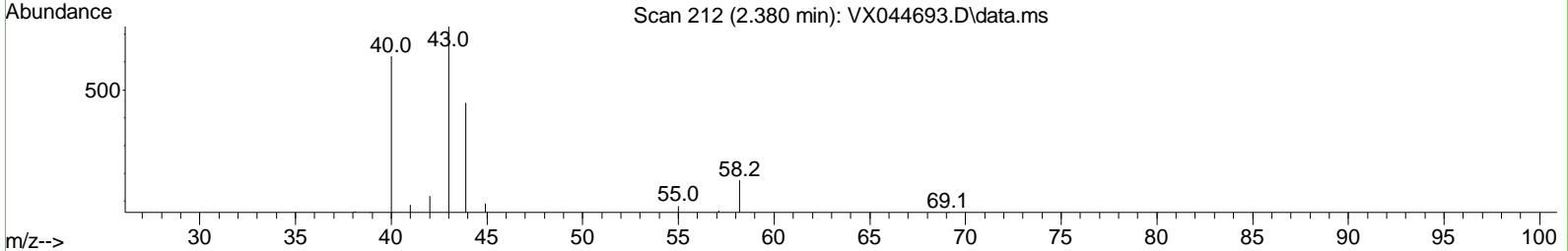
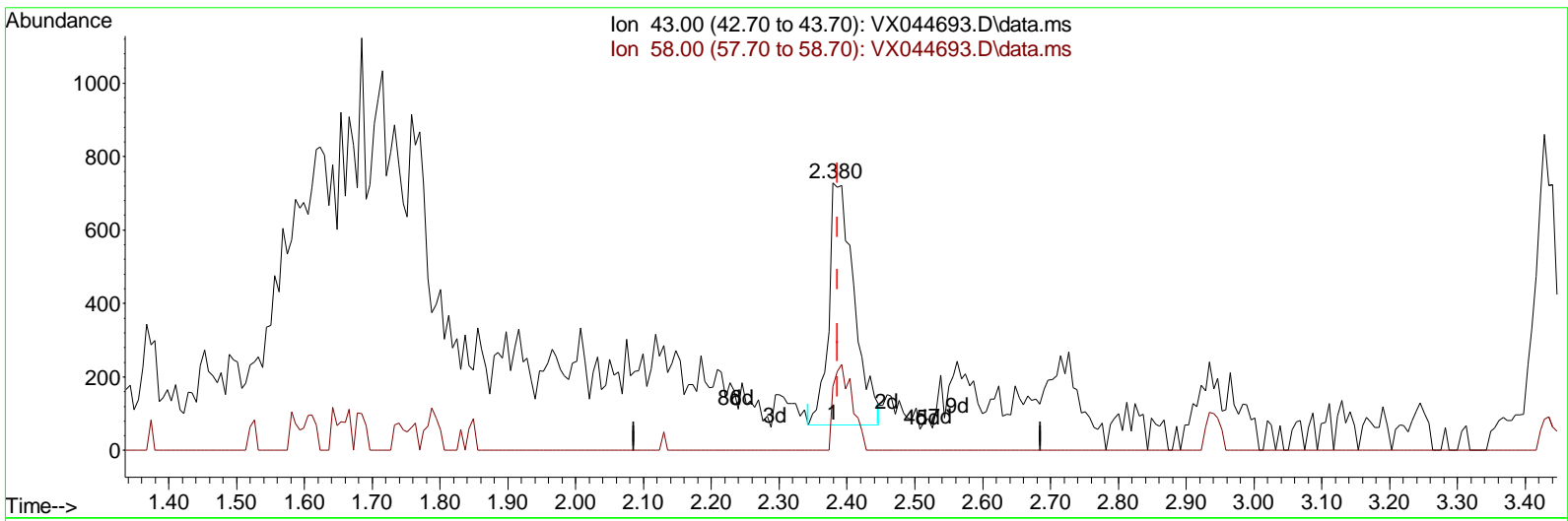
Data Path : Z:\voasrv\HPCHEM1\MSVOA_X\Data\VX012225\
 Data File : VX044693.D
 Acq On : 22 Jan 2025 12:40
 Operator : JC/MD
 Sample : Q1131-02
 Mi sc : 5.0mL/MSVOA_X/WATER
 ALS Vial : 4 Sample Multiplier: 1

Instrument :
 MSVOA_X
ClientSampleId :
 JNLE5

Manual IntegrationsAPPROVED

Reviewed By :John Carlone 01/23/2025
 Supervised By :Mahesh Dadoda 01/24/2025

Quant Time: Jan 23 00:51:45 2025
 Quant Method : Z:\voasrv\HPCHEM1\MSVOA_X\Method\SFAMXLM012125WMA.M
 Quant Title : VOC Analysis
 QLast Update : Thu Jan 23 00:51:10 2025
 Response via : Initial Calibration



TIC: VX044693.D\data.ms

(13) Acetone (T)

2.380min (-0.006) 3.34 ug/L

| response | 1712 | |
|----------|--------|--------|
| Ion | Exp% | Act% |
| 43.00 | 100.00 | 100.00 |
| 58.00 | 32.30 | 26.23 |
| 0.00 | 0.00 | 0.00 |
| 0.00 | 0.00 | 0.00 |

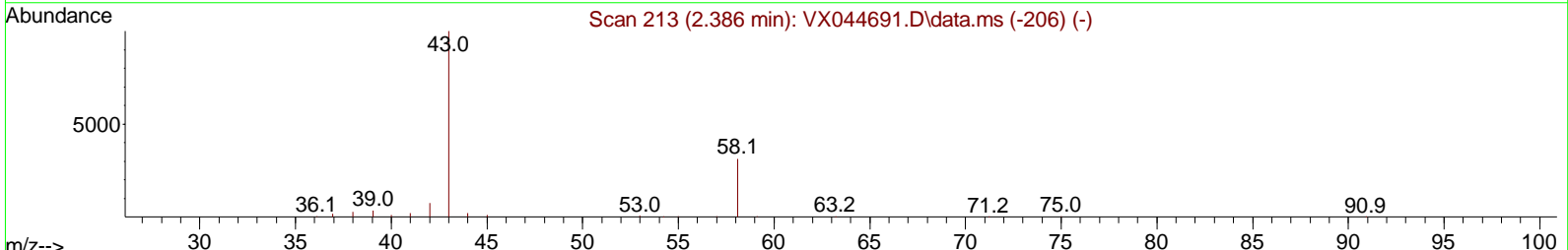
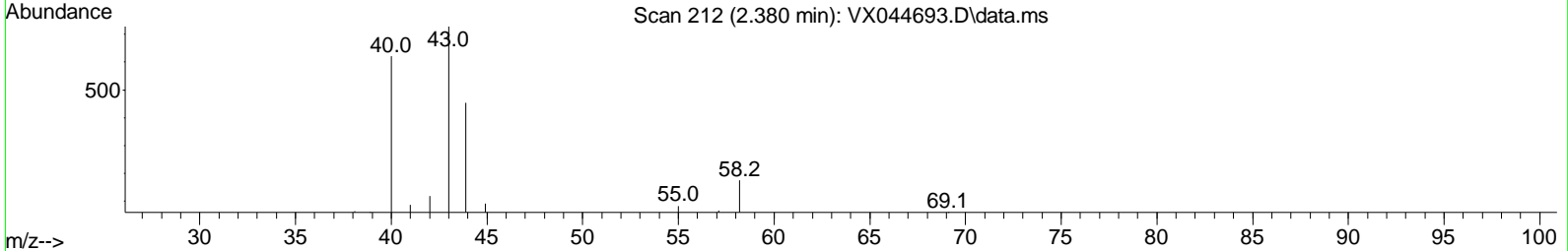
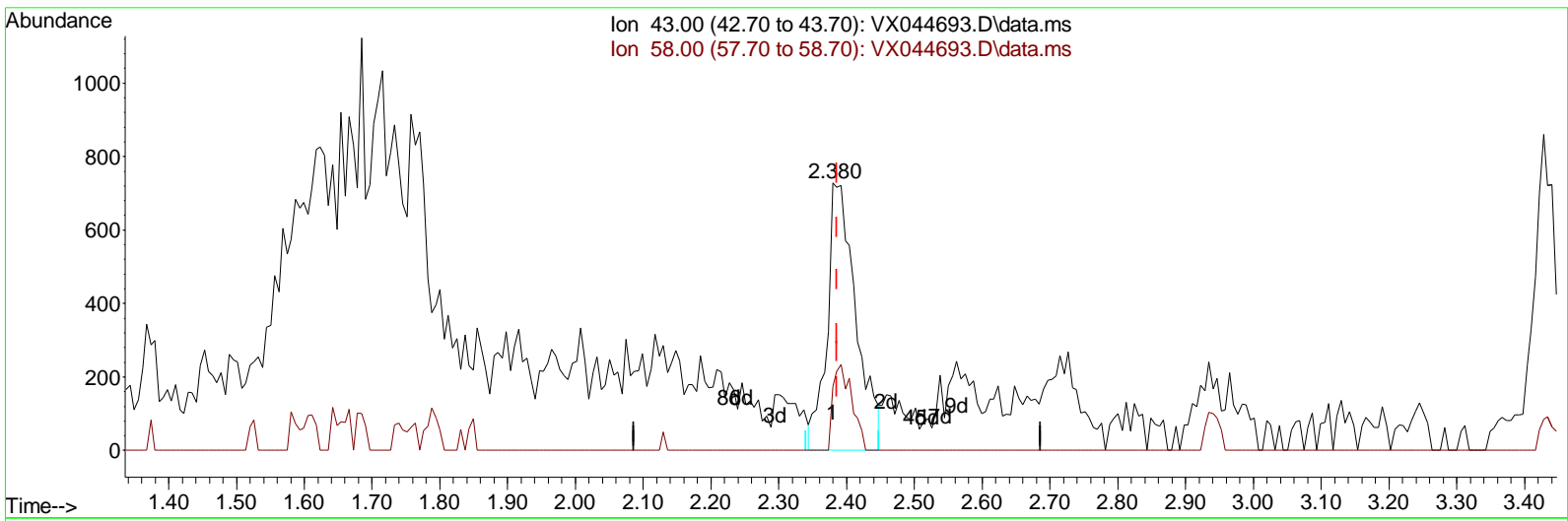
Data Path : Z:\voasrv\HPCHEM1\MSVOA_X\Data\VX012225\
 Data File : VX044693.D
 Acq On : 22 Jan 2025 12:40
 Operator : JC/MD
 Sample : Q1131-02
 Mi sc : 5.0mL/MSVOA_X/WATER
 ALS Vial : 4 Sample Multiplier: 1

Instrument :
 MSVOA_X
ClientSampleId :
 JNLE5

Manual Integrations APPROVED

Reviewed By : John Carlone 01/23/2025
 Supervised By : Mahesh Dadoda 01/24/2025

Quant Time: Jan 23 00:51:45 2025
 Quant Method : Z:\voasrv\HPCHEM1\MSVOA_X\Method\SFAMXLM012125WMA.M
 Quant Title : VOC Analysis
 QLast Update : Thu Jan 23 00:51:10 2025
 Response via : Initial Calibration



TIC: VX044693.D\data.ms

(13) Acetone (T)

2.380min (-0.006) 4.19 ug/L m

| response | 2147 | |
|----------|--------|--------|
| Ion | Exp% | Act% |
| 43.00 | 100.00 | 100.00 |
| 58.00 | 32.30 | 20.91 |
| 0.00 | 0.00 | 0.00 |
| 0.00 | 0.00 | 0.00 |

Data Path : Z:\voasrv\HPCHEM1\MSVOA_X\Data\VX012225\
 Data File : VX044693.D
 Acq On : 22 Jan 2025 12:40
 Operator : JC/MD
 Sample : Q1131-02
 Misc : 5.0mL/MSVOA_X/WATER
 ALS Vial : 4 Sample Multiplier: 1

Instrument :
 MSVOA_X
ClientSampleId :
 JNLE5

Manual Integrations APPROVED

Reviewed By : John Carlone 01/23/2025
 Supervised By : Mahesh Dadoda 01/24/2025

Quant Time: Jan 23 00:51:45 2025
 Quant Method : Z:\voasrv\HPCHEM1\MSVOA_X\Method\SFAMXML012125WMA.M
 Quant Title : VOC Analysis
 QLast Update : Thu Jan 23 00:51:10 2025
 Response via : Initial Calibration

| Compound | R.T. | QI on | Response | Conc | Units | Dev(Min) |
|------------------------------------|----------------|-------|------------|-----------|-------|----------|
| Internal Standards | | | | | | |
| 1) 1,4-Difluorobenzene | 6.751 | 114 | 197903 | 50.000 | ug/L | 0.00 |
| 28) Chlorobenzene-d5 | 10.049 | 117 | 155566 | 50.000 | ug/L | 0.00 |
| 58) 1,4-Dichlorobenzene-d4 | 12.024 | 152 | 56793 | 50.000 | ug/L | 0.00 |
| System Monitoring Compounds | | | | | | |
| 4) Vinyl Chloride-d3 | 1.367 | 65 | 66448 | 38.905 | ug/L | 0.00 |
| Spike Amount 50.000 | Range 60 - 135 | | Recovery = | 77.820% | | |
| 7) Chloroethane-d5 | 1.648 | 69 | 16826m | 38.240 | ug/L | 0.00 |
| Spike Amount 50.000 | Range 70 - 130 | | Recovery = | 76.480% | | |
| 11) 1,1-Dichloroethene-d2 | 2.294 | 65 | 20387 | 31.616 | ug/L | 0.00 |
| Spike Amount 50.000 | Range 60 - 125 | | Recovery = | 63.240% | | |
| 21) 2-Butanone-d5 | 4.452 | 46 | 123839 | 144.642 | ug/L | 0.00 |
| Spike Amount 100.000 | Range 40 - 130 | | Recovery = | 144.640%# | | |
| 24) Chloroform-d | 5.044 | 84 | 110264 | 39.060 | ug/L | 0.00 |
| Spike Amount 50.000 | Range 70 - 125 | | Recovery = | 78.120% | | |
| 26) 1,2-Dichloroethane-d4 | 5.946 | 65 | 69935 | 37.562 | ug/L | 0.00 |
| Spike Amount 50.000 | Range 70 - 125 | | Recovery = | 75.120% | | |
| 32) Benzene-d6 | 5.958 | 84 | 228972 | 44.103 | ug/L | 0.00 |
| Spike Amount 50.000 | Range 70 - 125 | | Recovery = | 88.200% | | |
| 36) 1,2-Dichloropropane-d6 | 7.299 | 67 | 73336 | 44.690 | ug/L | 0.00 |
| Spike Amount 50.000 | Range 70 - 120 | | Recovery = | 89.380% | | |
| 41) Toluene-d8 | 8.641 | 98 | 190503 | 41.046 | ug/L | 0.00 |
| Spike Amount 50.000 | Range 80 - 120 | | Recovery = | 82.100% | | |
| 43) trans-1,3-Dichloroprop... | 8.945 | 79 | 32564 | 38.720 | ug/L | 0.00 |
| Spike Amount 50.000 | Range 60 - 125 | | Recovery = | 77.440% | | |
| 47) 2-Hexanone-d5 | 9.390 | 63 | 72393 | 153.555 | ug/L | 0.00 |
| Spike Amount 100.000 | Range 45 - 130 | | Recovery = | 153.550%# | | |
| 56) 1,1,2,2-Tetrachloroeth... | 11.189 | 84 | 100027 | 50.566 | ug/L | 0.00 |
| Spike Amount 50.000 | Range 65 - 120 | | Recovery = | 101.140% | | |
| 66) 1,2-Dichlorobenzene-d4 | 12.317 | 152 | 49550 | 40.599 | ug/L | 0.00 |
| Spike Amount 50.000 | Range 80 - 120 | | Recovery = | 81.200% | | |
| Target Compounds | | | | | | |
| 13) Acetone | 2.380 | 43 | 2147m | 4.186 | ug/L | |

(#) = qualifier out of range (m) = manual integration (+) = signals summed

Data Path : Z:\voasrv\HPCHEM1\MSVOA_X\Data\VX012225\
 Data File : VX044693.D
 Acq On : 22 Jan 2025 12:40
 Operator : JC/MD
 Sample : Q1131-02
 Misc : 5.0mL/MSVOA_X/WATER
 ALS Vial : 4 Sample Multiplier: 1

Instrument :
 MSVOA_X
Client Sample Id :
 JNLE5

Manual Integrations APPROVED

Reviewed By : John Carlone 01/23/2025
 Supervised By : Mahesh Dadoda 01/24/2025

Quant Time: Jan 23 00:51:45 2025
 Quant Method : Z:\voasrv\HPCHEM1\MSVOA_X\Method\SFAMXLM012125WMA.M
 Quant Title : VOC Analysis
 QLast Update : Thu Jan 23 00:51:10 2025
 Response via : Initial Calibration

