

Data Path : Z:\voasrv\HPCHEM1\MSVOA_X\Data\VX012422\
 Data File : VX026554.D
 Acq On : 24 Jan 2022 12:28
 Operator : JC/MD
 Sample : IBLK
 Misc : 5.0mL/MSVOA_X/WATER
 ALS Vial : 7 Sample Multiplier: 1

Instrument :
 MSVOA_X
 ClientSampleId :
 IBLK

Quant Time: Jan 25 03:25:34 2022
 Quant Method : Z:\voasrv\HPCHEM1\MSVOA_X\Method\82X011122W.M
 Quant Title : SW846 8260
 QLast Update : Tue Jan 11 14:45:13 2022
 Response via : Initial Calibration

Compound	R.T.	QIon	Response	Conc	Units	Dev(Min)

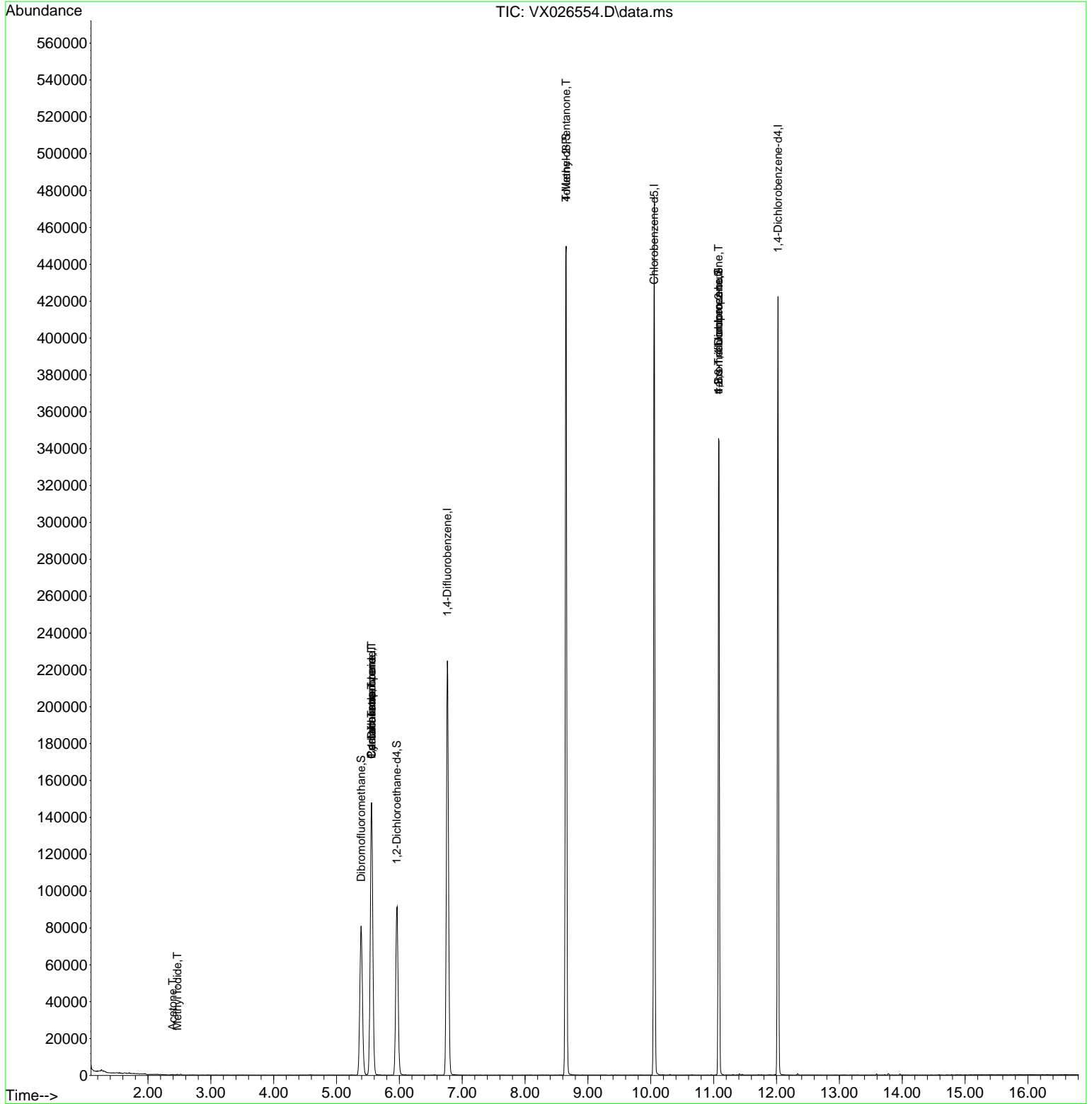
Internal Standards						
1) Pentafluorobenzene	5.556	168	136152	50.000	ug/l	0.00
34) 1,4-Difluorobenzene	6.763	114	226803	50.000	ug/l	0.00
63) Chlorobenzene-d5	10.055	117	205881	50.000	ug/l	0.00
72) 1,4-Dichlorobenzene-d4	12.024	152	85923	50.000	ug/l	0.00
System Monitoring Compounds						
33) 1,2-Dichloroethane-d4	5.958	65	90296	47.476	ug/l	0.00
Spiked Amount	50.000	Range 78 - 117	Recovery =	94.960%		
35) Dibromofluoromethane	5.391	113	70989	48.469	ug/l	0.00
Spiked Amount	50.000	Range 75 - 124	Recovery =	96.940%		
50) Toluene-d8	8.653	98	270196	51.194	ug/l	0.00
Spiked Amount	50.000	Range 92 - 112	Recovery =	102.380%		
62) 4-Bromofluorobenzene	11.079	95	97557	52.033	ug/l	0.00
Spiked Amount	50.000	Range 83 - 123	Recovery =	104.060%		
Target Compounds						
						Qvalue
10) Methyl Iodide	2.465	142	445	4.698	ug/l #	77
16) Acetone	2.392	43	443	0.457	ug/l	91
31) Cyclohexane	5.556	56	2851	1.016	ug/l #	1
36) 1,1-Dichloropropene	5.556	75	10817	4.678	ug/l #	50
38) Carbon Tetrachloride	5.556	117	14325	6.023	ug/l #	16
51) 4-Methyl-2-Pentanone	8.653	43	1100	0.491	ug/l #	1
76) 1,2,3-Trichloropropane	11.079	75	48917	25.857	ug/l #	40
81) trans-1,4-Dichloro-2-b...	11.079	75	48917	78.424	ug/l #	3

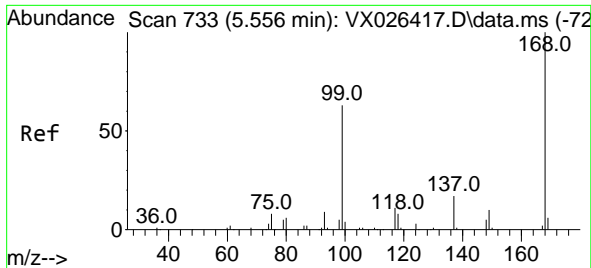
(#) = qualifier out of range (m) = manual integration (+) = signals summed

Data Path : Z:\voasrv\HPCHEM1\MSVOA_X\Data\VX012422\
 Data File : VX026554.D
 Acq On : 24 Jan 2022 12:28
 Operator : JC/MD
 Sample : IBLK
 Misc : 5.0mL/MSVOA_X/WATER
 ALS Vial : 7 Sample Multiplier: 1

Instrument :
 MSVOA_X
 ClientSampleId :
 IBLK

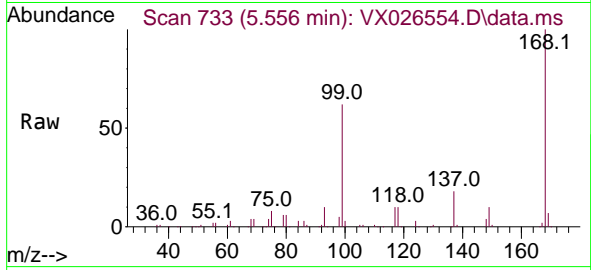
Quant Time: Jan 25 03:25:34 2022
 Quant Method : Z:\voasrv\HPCHEM1\MSVOA_X\Method\82X011122W.M
 Quant Title : SW846 8260
 QLast Update : Tue Jan 11 14:45:13 2022
 Response via : Initial Calibration



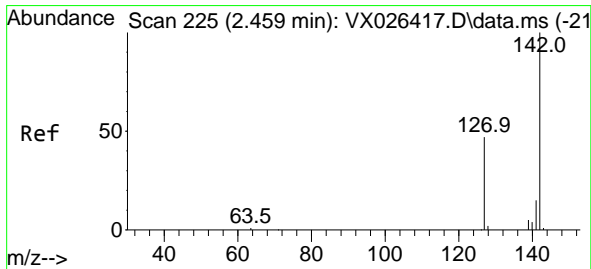
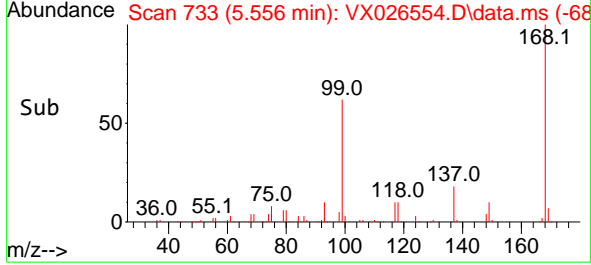
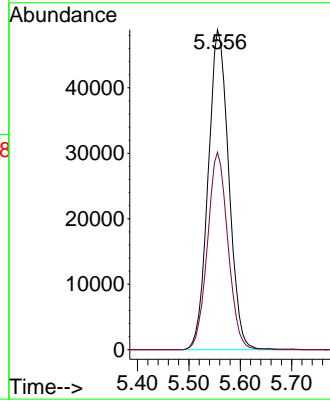


#1
 Pentafluorobenzene
 Concen: 50.000 ug/l
 RT: 5.556 min Scan# 71
 Delta R.T. -0.000 min
 Lab File: VX026554.D
 Acq: 24 Jan 2022 12:28

Instrument :
 MSVOA_X
 ClientSampleId :
 IBLK

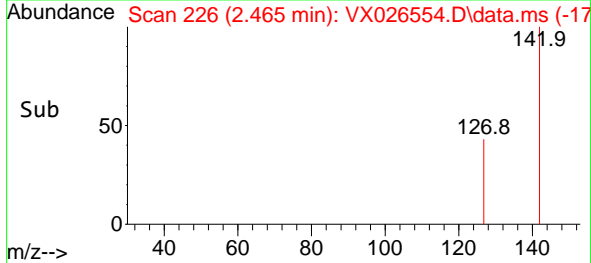
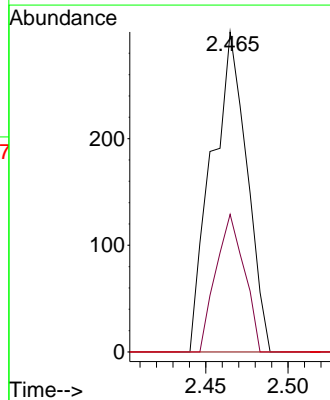
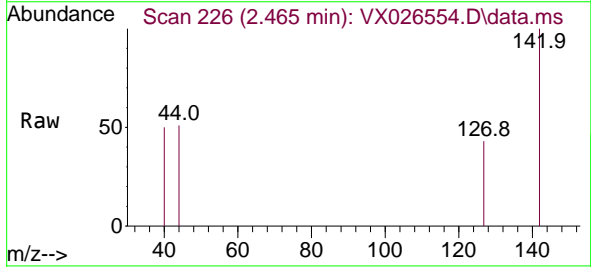


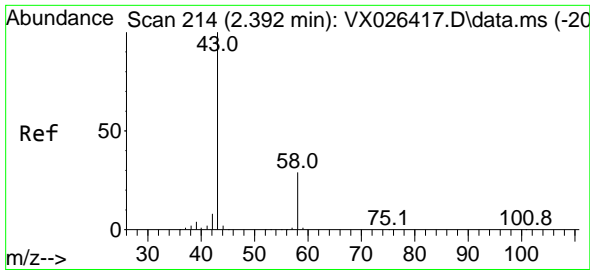
Tgt Ion:168 Resp: 136152
 Ion Ratio Lower Upper
 168 100
 99 61.7 50.3 75.5



#10
 Methyl Iodide
 Concen: 4.698 ug/l
 RT: 2.465 min Scan# 226
 Delta R.T. 0.006 min
 Lab File: VX026554.D
 Acq: 24 Jan 2022 12:28

Tgt Ion:142 Resp: 445
 Ion Ratio Lower Upper
 142 100
 127 34.8 38.1 57.1#
 141 0.0 11.2 16.8#

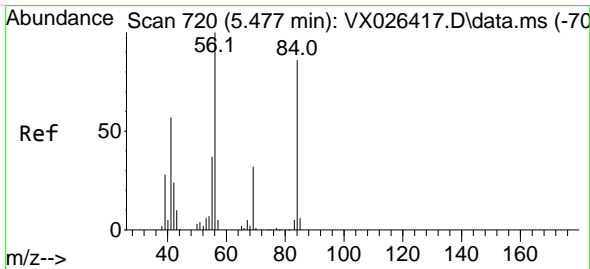
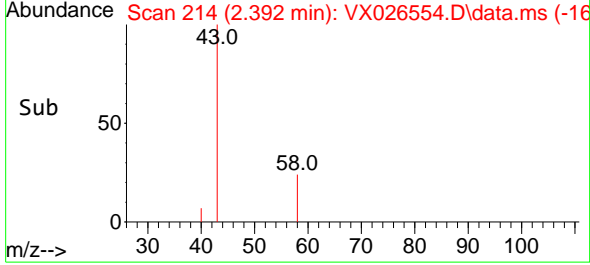
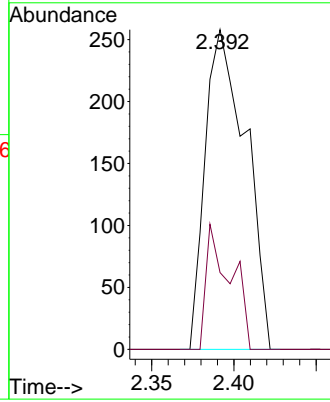
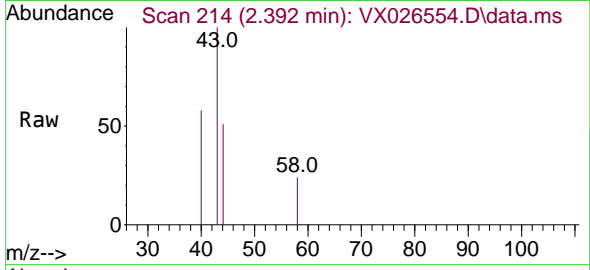




#16
 Acetone
 Concen: 0.457 ug/l
 RT: 2.392 min Scan# 211
 Delta R.T. -0.000 min
 Lab File: VX026554.D
 Acq: 24 Jan 2022 12:28

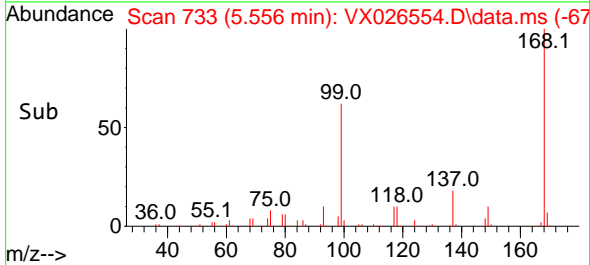
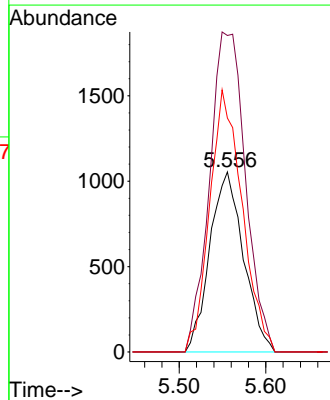
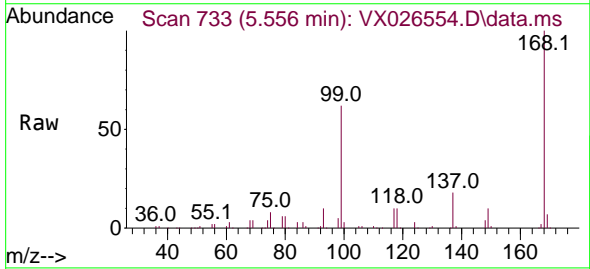
Instrument : MSVOA_X
 ClientSampleId : IBLK

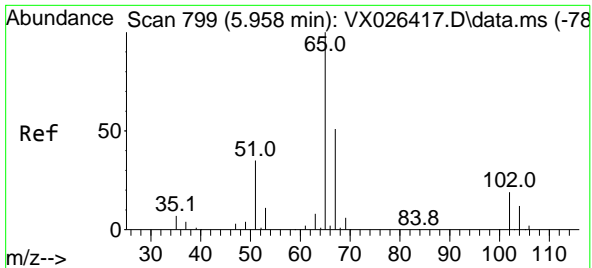
Tgt Ion	Resp	Lower	Upper
43	100		
58	24.0	23.0	34.6



#31
 Cyclohexane
 Concen: 1.016 ug/l
 RT: 5.556 min Scan# 733
 Delta R.T. 0.079 min
 Lab File: VX026554.D
 Acq: 24 Jan 2022 12:28

Tgt Ion	Resp	Lower	Upper
56	100		
69	175.8	25.8	38.6#
84	130.0	68.9	103.3#

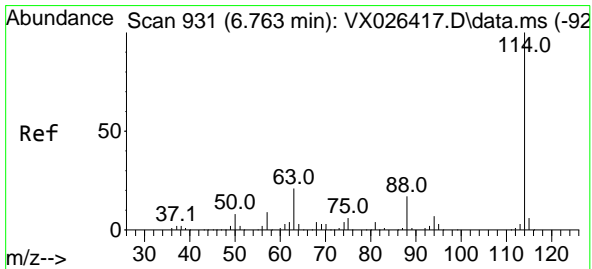
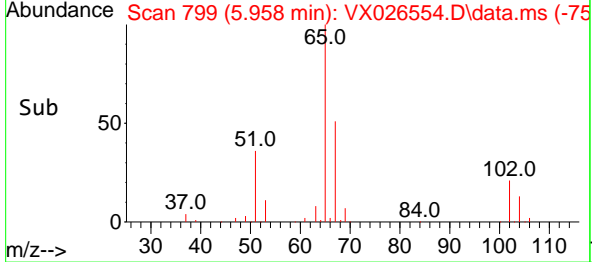
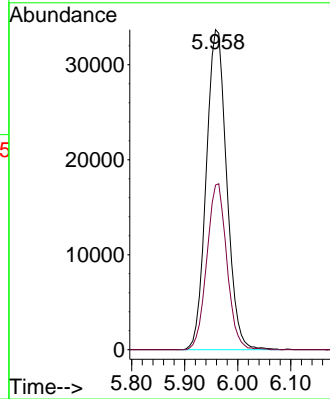
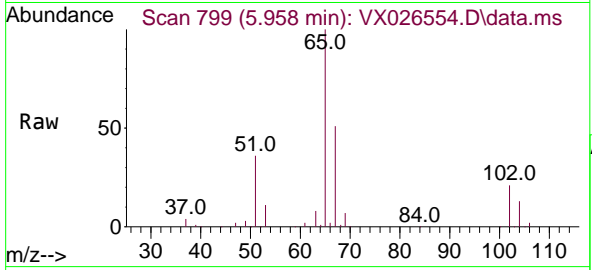




#33
 1,2-Dichloroethane-d4
 Concen: 47.476 ug/l
 RT: 5.958 min Scan# 799
 Delta R.T. -0.000 min
 Lab File: VX026554.D
 Acq: 24 Jan 2022 12:28

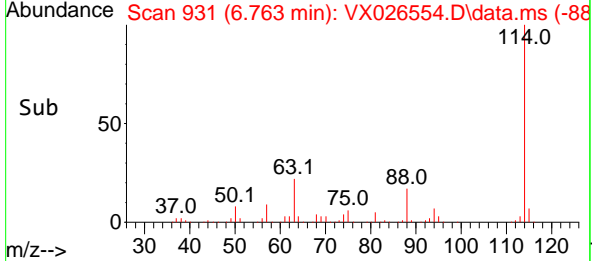
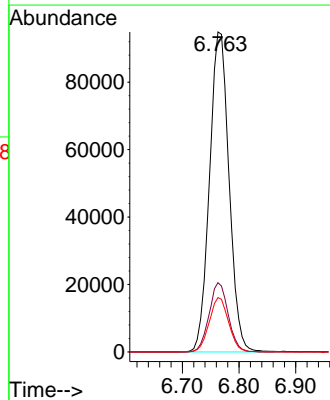
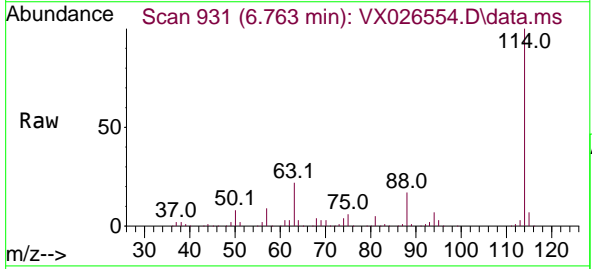
Instrument : MSVOA_X
 ClientSampleId : IBLK

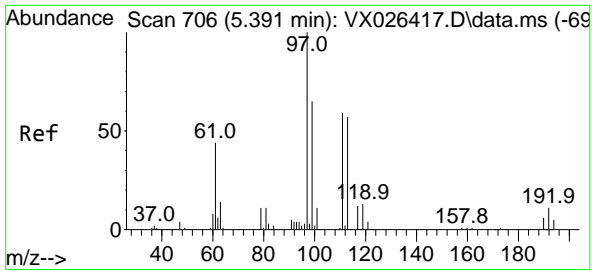
Tgt Ion: 65 Resp: 90296
 Ion Ratio Lower Upper
 65 100
 67 50.7 0.0 100.8



#34
 1,4-Difluorobenzene
 Concen: 50.000 ug/l
 RT: 6.763 min Scan# 931
 Delta R.T. -0.000 min
 Lab File: VX026554.D
 Acq: 24 Jan 2022 12:28

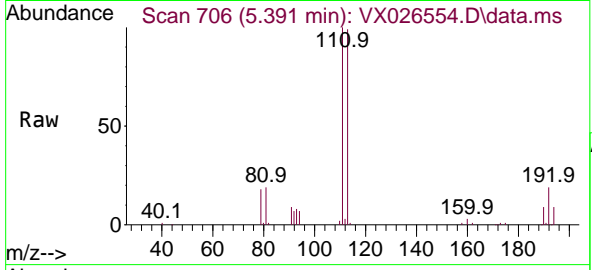
Tgt Ion: 114 Resp: 226803
 Ion Ratio Lower Upper
 114 100
 63 21.6 0.0 42.8
 88 17.0 0.0 33.0





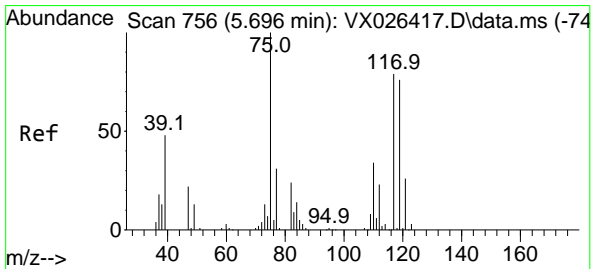
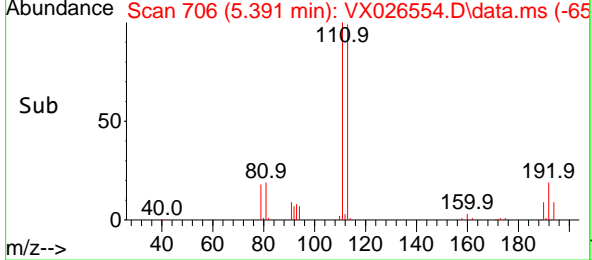
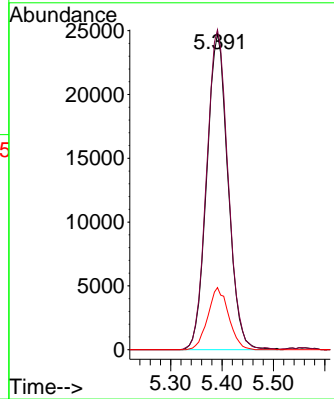
#35
 Dibromofluoromethane
 Concen: 48.469 ug/l
 RT: 5.391 min Scan# 706
 Delta R.T. -0.000 min
 Lab File: VX026554.D
 Acq: 24 Jan 2022 12:28

Instrument : MSVOA_X
 ClientSampleId : IBLK



Tgt Ion: 113 Resp: 70989

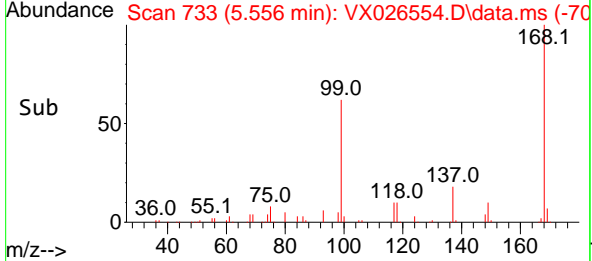
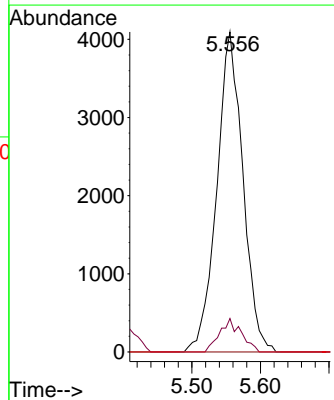
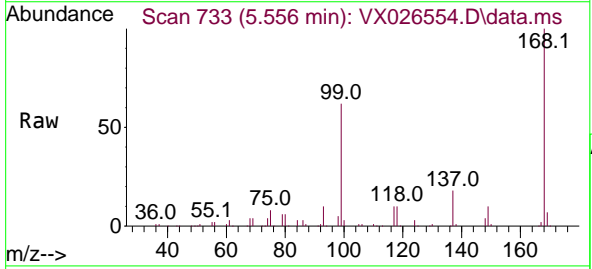
Ion	Ratio	Lower	Upper
113	100		
111	102.5	81.2	121.8
192	19.3	15.0	22.4

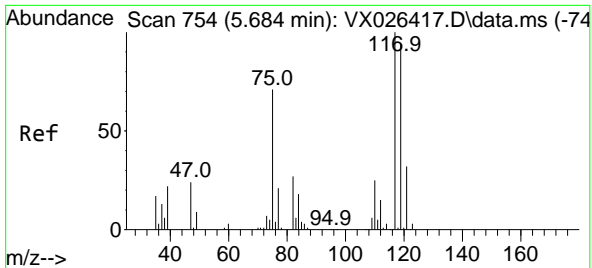


#36
 1,1-Dichloropropene
 Concen: 4.678 ug/l
 RT: 5.556 min Scan# 733
 Delta R.T. -0.140 min
 Lab File: VX026554.D
 Acq: 24 Jan 2022 12:28

Tgt Ion: 75 Resp: 10817

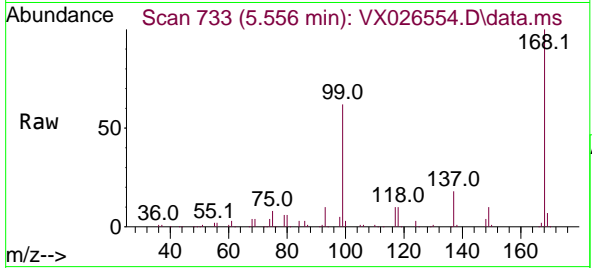
Ion	Ratio	Lower	Upper
75	100		
110	8.6	17.2	51.6#
77	0.0	24.6	36.8#



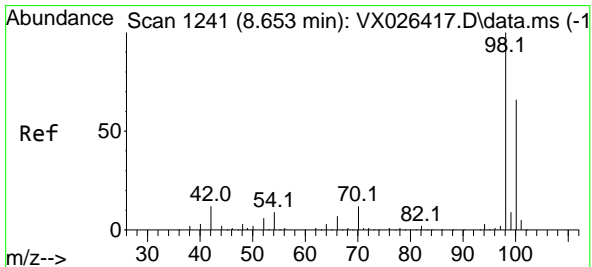
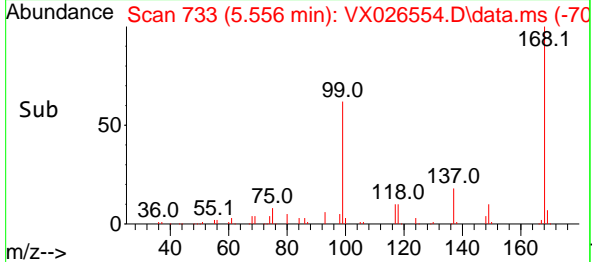
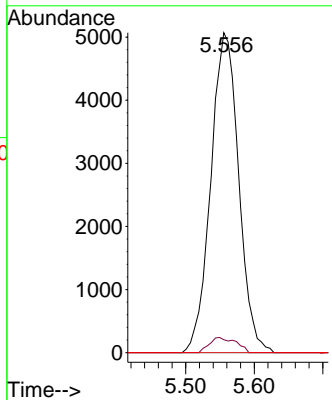


#38
 Carbon Tetrachloride
 Concen: 6.023 ug/l
 RT: 5.556 min Scan# 711
 Delta R.T. -0.128 min
 Lab File: VX026554.D
 Acq: 24 Jan 2022 12:28

Instrument : MSVOA_X
 ClientSampleId : IBLK

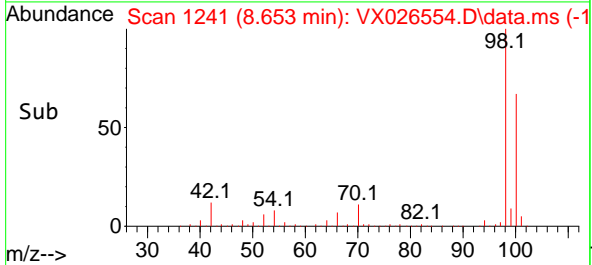
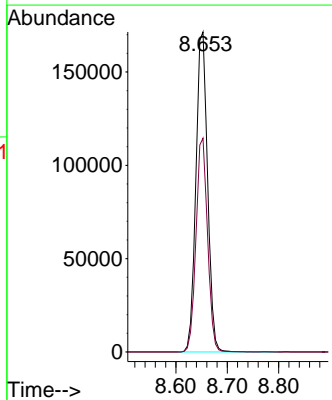
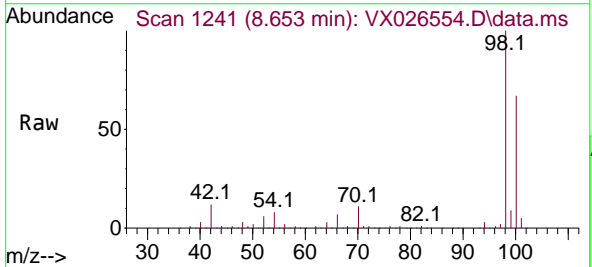


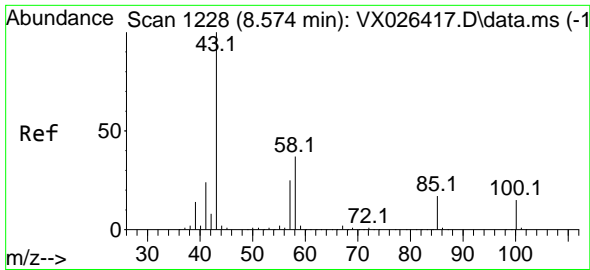
Tgt Ion:117 Resp: 14325
 Ion Ratio Lower Upper
 117 100
 119 4.1 74.7 112.1#
 121 0.0 25.4 38.0#



#50
 Toluene-d8
 Concen: 51.194 ug/l
 RT: 8.653 min Scan# 1241
 Delta R.T. -0.000 min
 Lab File: VX026554.D
 Acq: 24 Jan 2022 12:28

Tgt Ion: 98 Resp: 270196
 Ion Ratio Lower Upper
 98 100
 100 66.2 53.2 79.8

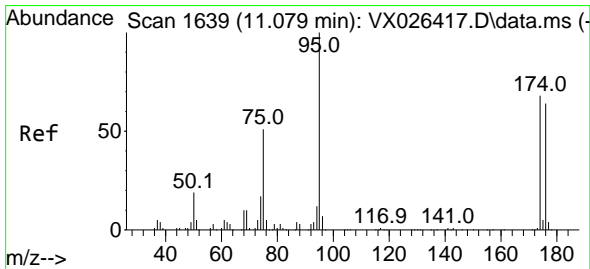
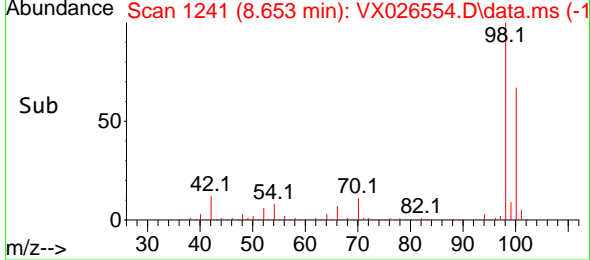
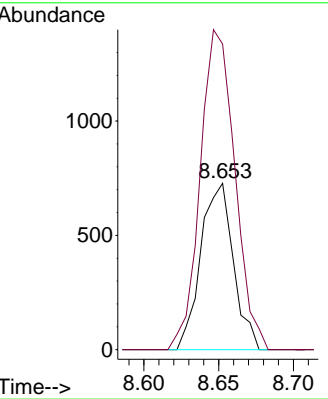
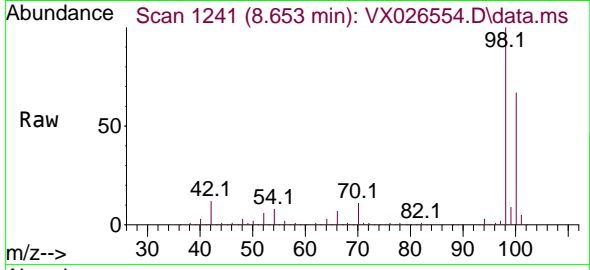




#51
 4-Methyl-2-Pentanone
 Concen: 0.491 ug/l
 RT: 8.653 min Scan# 1241
 Delta R.T. 0.079 min
 Lab File: VX026554.D
 Acq: 24 Jan 2022 12:28

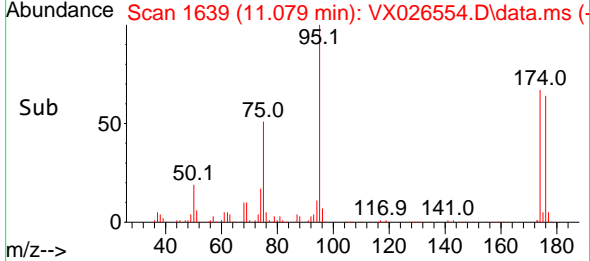
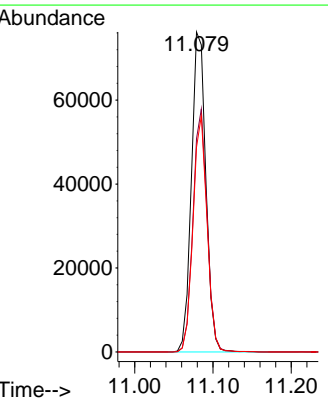
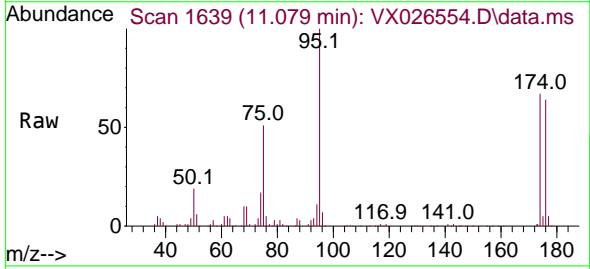
Instrument :
 MSVOA_X
 ClientSampleId :
 IBLK

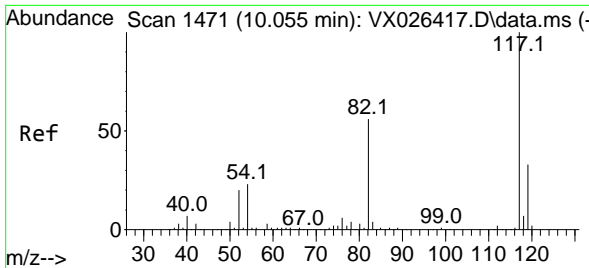
Tgt Ion: 43 Resp: 1100
 Ion Ratio Lower Upper
 43 100
 58 205.3 30.5 45.7#



#62
 4-Bromofluorobenzene
 Concen: 52.033 ug/l
 RT: 11.079 min Scan# 1639
 Delta R.T. -0.000 min
 Lab File: VX026554.D
 Acq: 24 Jan 2022 12:28

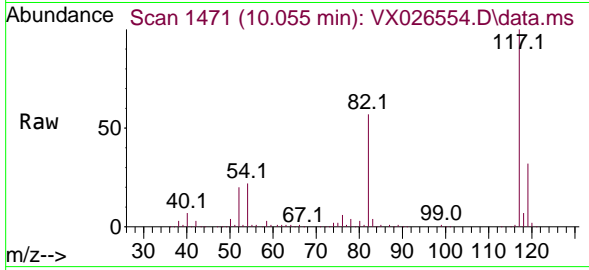
Tgt Ion: 95 Resp: 97557
 Ion Ratio Lower Upper
 95 100
 174 74.1 0.0 148.6
 176 71.6 0.0 141.4



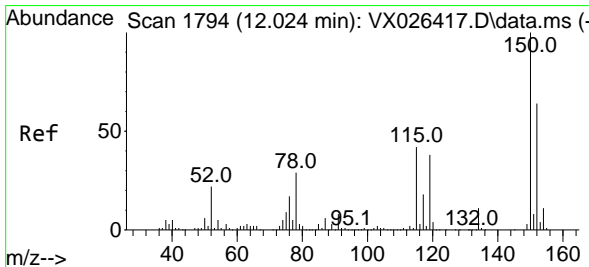
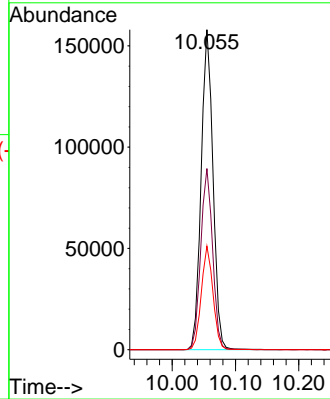
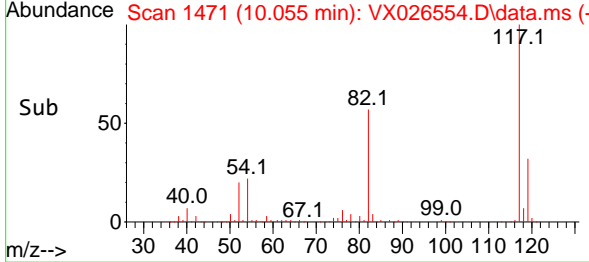


#63
 Chlorobenzene-d5
 Concen: 50.000 ug/l
 RT: 10.055 min Scan# 1471
 Delta R.T. -0.000 min
 Lab File: VX026554.D
 Acq: 24 Jan 2022 12:28

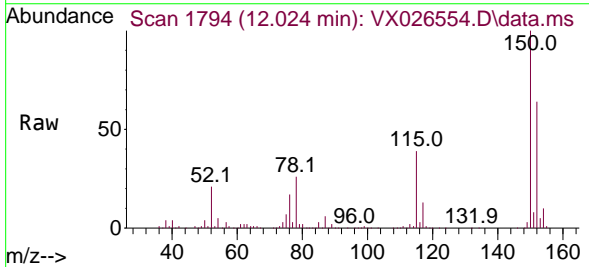
Instrument :
 MSVOA_X
 ClientSampleId :
 IBLK



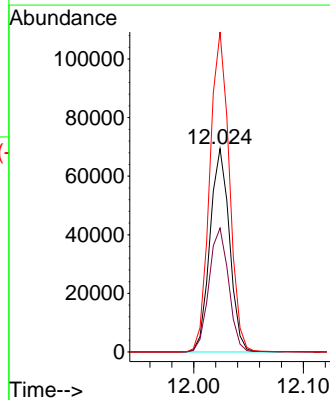
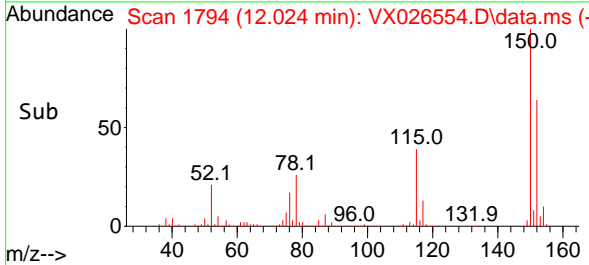
Tgt Ion:117 Resp: 205881
 Ion Ratio Lower Upper
 117 100
 82 56.6 45.2 67.8
 119 32.4 26.2 39.2

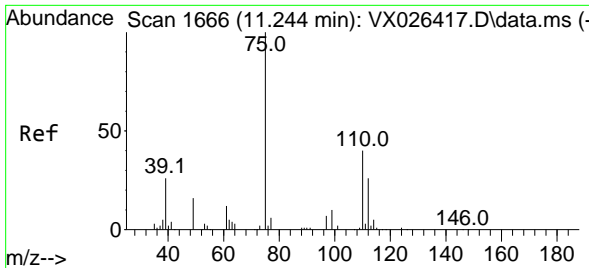


#72
 1,4-Dichlorobenzene-d4
 Concen: 50.000 ug/l
 RT: 12.024 min Scan# 1794
 Delta R.T. -0.000 min
 Lab File: VX026554.D
 Acq: 24 Jan 2022 12:28



Tgt Ion:152 Resp: 85923
 Ion Ratio Lower Upper
 152 100
 115 61.5 44.2 132.6
 150 157.2 0.0 348.2

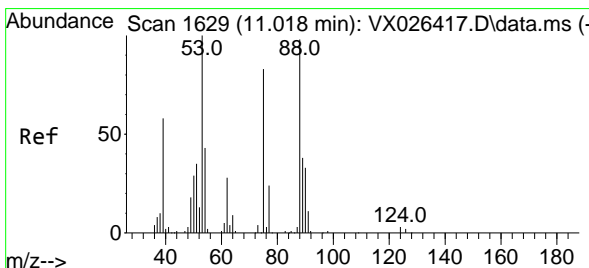
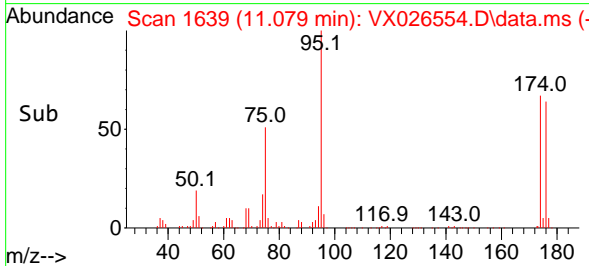
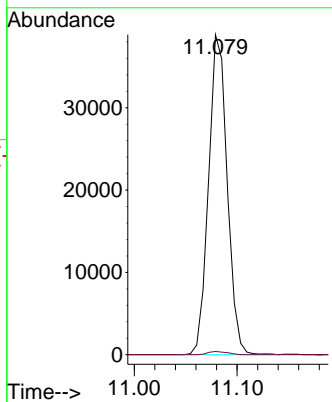
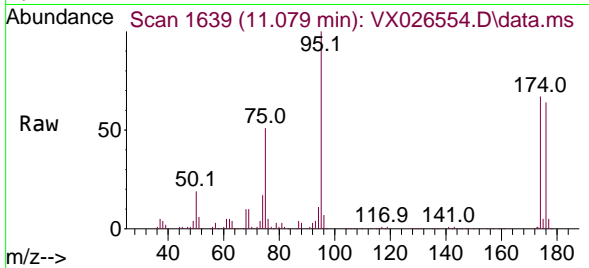




#76
 1,2,3-Trichloropropane
 Concen: 25.857 ug/l
 RT: 11.079 min Scan# 1639
 Delta R.T. -0.165 min
 Lab File: VX026554.D
 Acq: 24 Jan 2022 12:28

Instrument :
 MSVOA_X
 ClientSampleId :
 IBLK

Tgt Ion: 75 Resp: 48917
 Ion Ratio Lower Upper
 75 100
 77 1.0 18.3 54.8#



#81
 trans-1,4-Dichloro-2-butene
 Concen: 78.424 ug/l
 RT: 11.079 min Scan# 1639
 Delta R.T. 0.061 min
 Lab File: VX026554.D
 Acq: 24 Jan 2022 12:28

Tgt Ion: 75 Resp: 48917
 Ion Ratio Lower Upper
 75 100
 53 0.0 94.0 141.0#
 89 0.0 37.0 55.4#

