

Data Path : Z:\voasrv\HPCHEM1\MSVOA\_X\Data\VX012521\  
 Data File : VX020738.D  
 Acq On : 25 Jan 2021 20:30  
 Operator : JC/SP  
 Sample : M1192-05  
 Misc : 5.0mL/MSVOA\_X/WATER  
 ALS Vial : 25 Sample Multiplier: 1

Instrument :  
 MSVOA\_X  
 ClientSampled :

Quant Time: Jan 26 03:12:41 2021  
 Quant Method : Z:\VOASRV\HPCHEM1\MSVOA\_X\METHOD\82X012521W.M  
 Quant Title : SW846 8260  
 QLast Update : Mon Jan 25 13:38:15 2021  
 Response via : Initial Calibration

Compound	R.T.	QIon	Response	Conc	Units	Dev(Min)
Internal Standards						
1) Pentafluorobenzene	5.629	168	321596	50.00	ug/l	0.00
34) 1,4-Difluorobenzene	6.830	114	551110	50.00	ug/l	0.00
63) Chlorobenzene-d5	10.092	117	520933	50.00	ug/l	0.00
72) 1,4-Dichlorobenzene-d4	12.061	152	256478	50.00	ug/l	0.00
System Monitoring Compounds						
33) 1,2-Dichloroethane-d4	6.025	65	211368	48.19	ug/l	0.00
Spiked Amount	50.000	Range 61 - 141	Recovery =	96.38%		
35) Dibromofluoromethane	5.464	113	177832	47.11	ug/l	0.00
Spiked Amount	50.000	Range 69 - 133	Recovery =	94.22%		
50) Toluene-d8	8.696	98	682967	49.35	ug/l	0.00
Spiked Amount	50.000	Range 65 - 126	Recovery =	98.70%		
62) 4-Bromofluorobenzene	11.122	95	260661	48.50	ug/l	0.00
Spiked Amount	50.000	Range 58 - 135	Recovery =	97.00%		
Target Compounds						
						Qvalue
2) Dichlorodifluoromethane	1.191	85	49	1.21	ug/l #	42
5) Bromomethane	1.630	94	655	0.30	ug/l	85
6) Chloroethane	1.636	64	533	0.21	ug/l	91
11) Tert butyl alcohol	3.014	59	6833	8.34	ug/l	98
15) Acrylonitrile	3.154	53	888	0.43	ug/l #	17
16) Acetone	2.422	43	88587	53.26	ug/l	100
17) Carbon Disulfide	2.544	76	2490	1.15	ug/l	99
18) Methyl Acetate	2.758	43	1248	0.29	ug/l	92
19) Methyl tert-butyl Ether	3.166	73	33596	2.91	ug/l #	72
22) Diisopropyl ether	3.824	45	31814	2.81	ug/l #	83
23) Vinyl Acetate	3.831	43	15948	1.71	ug/l #	68
25) 2-Butanone	4.635	43	22056	8.47	ug/l	98
29) Tetrahydrofuran	5.099	42	1046	0.62	ug/l #	54
31) Cyclohexane	5.544	56	25784	4.37	ug/l	90
36) 1,1-Dichloropropene	5.623	75	24145	4.37	ug/l #	49
37) Ethyl Acetate	4.806	43	10047	1.92	ug/l	99
38) Carbon Tetrachloride	5.635	117	33363	5.74	ug/l #	16
39) Methylcyclohexane	7.440	83	48528	7.70	ug/l	97
40) Benzene	6.111	78	539728	33.13	ug/l	100
42) 1,2-Dichloroethane	6.111	62	4802	0.83	ug/l #	73
43) Isopropyl Acetate	6.403	43	3447	0.41	ug/l #	34
51) 4-Methyl-2-Pentanone	8.622	43	3998	0.76	ug/l	95
52) Toluene	8.763	92	2973529	290.31	ug/l	97
53) t-1,3-Dichloropropene	8.763	75	33603	5.30	ug/l #	1
55) 1,1,2-Trichloroethane	9.147	97	8482	1.99	ug/l #	26
56) Ethyl methacrylate	9.159	69	14081	4.74	ug/l	87
59) 2-Hexanone	9.470	43	3821	0.97	ug/l	92
67) Ethyl Benzene	10.232	91	635205	32.50	ug/l	97
68) m/p-Xylenes	10.342	106	2095981	287.63	ug/l	98
69) o-Xylene	10.683	106	984602	143.65	ug/l	100
70) Styrene	10.683	104	50673	4.31	ug/l #	1
73) Isopropylbenzene	11.000	105	40393	2.18	ug/l	96
74) N-amyl acetate	10.933	43	4609	2.58	ug/l #	38
76) 1,2,3-Trichloropropane	11.415	75	19636	3.30	ug/l #	1
78) n-propylbenzene	11.341	91	122650	5.73	ug/l	98
79) 2-Chlorotoluene	11.415	91	284902	21.79	ug/l #	41

Data Path : Z:\voasrv\HPCHEM1\MSVOA\_X\Data\VX012521\  
 Data File : VX020738.D  
 Acq On : 25 Jan 2021 20:30  
 Operator : JC/SP  
 Sample : M1192-05  
 Misc : 5.0mL/MSVOA\_X/WATER  
 ALS Vial : 25 Sample Multiplier: 1

Instrument :  
 MSVOA\_X  
 ClientSampleId :

Quant Time: Jan 26 03:12:41 2021  
 Quant Method : Z:\VOASRV\HPCHEM1\MSVOA\_X\METHOD\82X012521W.M  
 Quant Title : SW846 8260  
 QLast Update : Mon Jan 25 13:38:15 2021  
 Response via : Initial Calibration

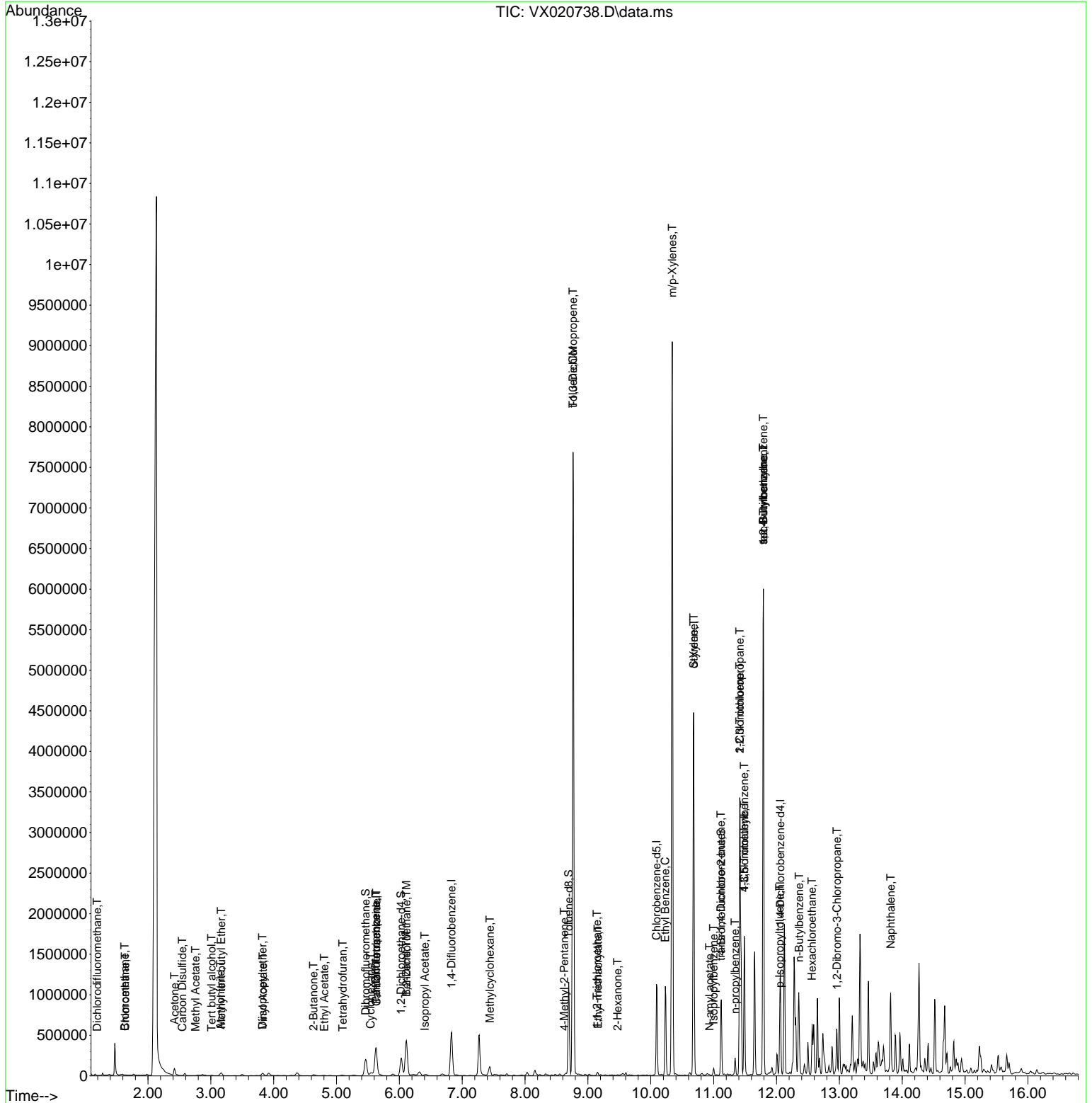
Compound	R.T.	QIon	Response	Conc	Units	Dev(Min)
80) 1,3,5-Trimethylbenzene	11.488	105	726752	45.87	ug/l	99
81) trans-1,4-Dichloro-2-b...	11.116	75	127358	60.00	ug/l #	12
82) 4-Chlorotoluene	11.488	91	74817	4.84	ug/l #	45
83) tert-Butylbenzene	11.793	119	313080	20.46	ug/l #	53
84) 1,2,4-Trimethylbenzene	11.793	105	2658019	166.32	ug/l	99
85) sec-Butylbenzene	11.793	105	2658019	150.30	ug/l #	57
86) p-Isopropyltoluene	12.049	119	47460	2.89	ug/l	97
89) n-Butylbenzene	12.360	91	128451	8.74	ug/l #	18
90) Hexachloroethane	12.567	117	24300	8.22	ug/l #	9
92) 1,2-Dibromo-3-Chloropr...	12.963	75	1954	1.41	ug/l #	3
95) Naphthalene	13.817	128	606520	31.93	ug/l	100

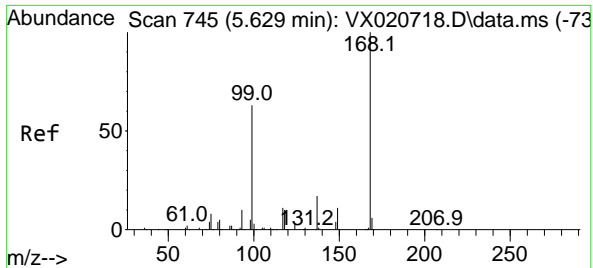
(#) = qualifier out of range (m) = manual integration (+) = signals summed

Data Path : Z:\voasrv\HPCHEM1\MSVOA\_X\Data\VX012521\  
 Data File : VX020738.D  
 Acq On : 25 Jan 2021 20:30  
 Operator : JC/SP  
 Sample : M1192-05  
 Misc : 5.0mL/MSVOA\_X/WATER  
 ALS Vial : 25 Sample Multiplier: 1

Instrument :  
 MSVOA\_X  
 ClientSampled :

Quant Time: Jan 26 03:12:41 2021  
 Quant Method : Z:\VOASRV\HPCHEM1\MSVOA\_X\METHOD\82X012521W.M  
 Quant Title : SW846 8260  
 QLast Update : Mon Jan 25 13:38:15 2021  
 Response via : Initial Calibration

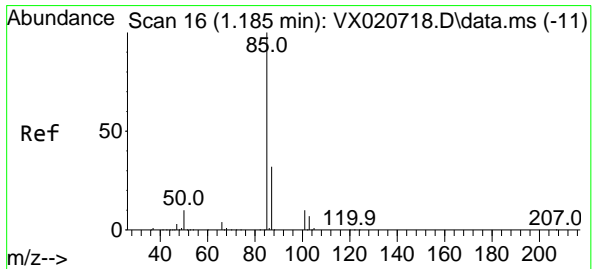
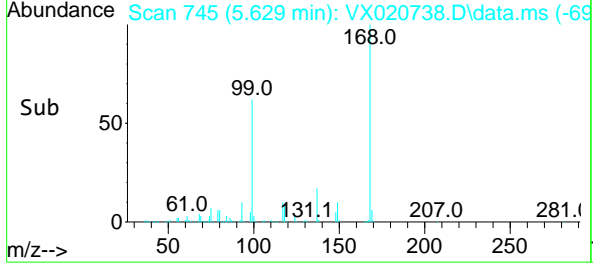
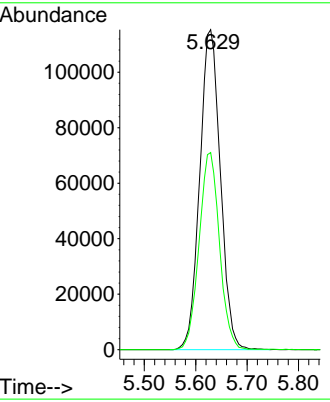
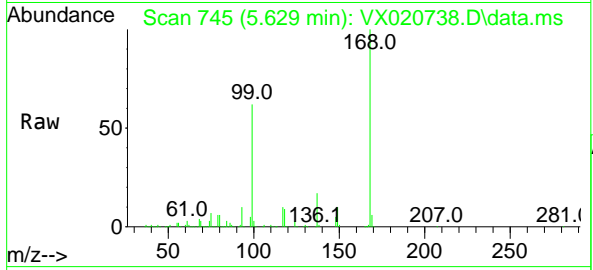




#1  
 Pentafluorobenzene  
 Concen: 50.00 ug/l  
 RT: 5.629 min Scan# 745  
 Delta R.T. 0.000 min  
 Lab File: VX020738.D  
 Acq: 25 Jan 2021 20:30

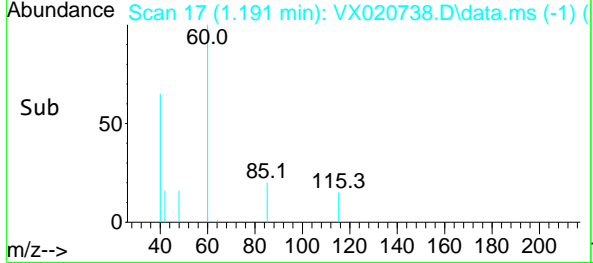
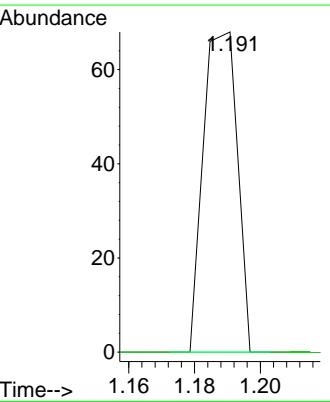
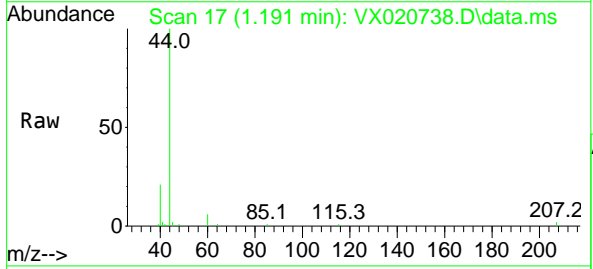
Instrument :  
 MSVOA\_X  
 ClientSampled :

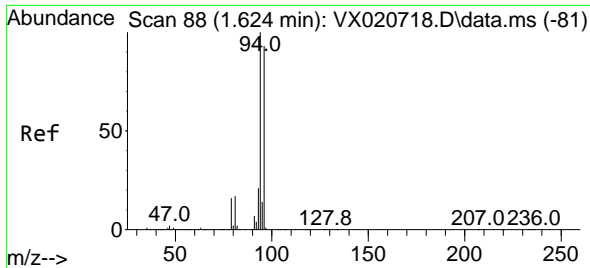
Tgt Ion:168 Resp: 321596  
 Ion Ratio Lower Upper  
 168 100  
 99 61.6 45.8 68.6



#2  
 Dichlorodifluoromethane  
 Concen: 1.21 ug/l  
 RT: 1.191 min Scan# 17  
 Delta R.T. 0.006 min  
 Lab File: VX020738.D  
 Acq: 25 Jan 2021 20:30

Tgt Ion: 85 Resp: 49  
 Ion Ratio Lower Upper  
 85 100  
 87 0.0 16.4 49.2#

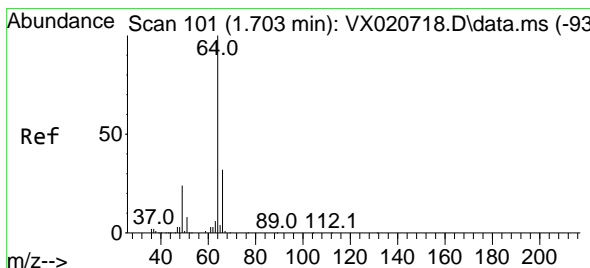
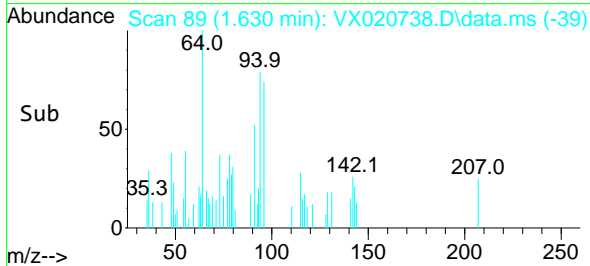
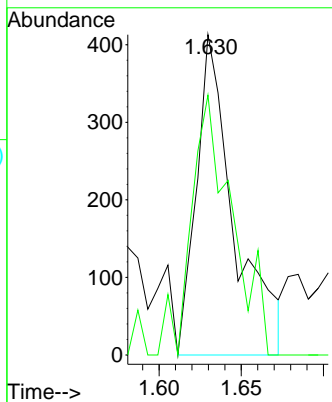
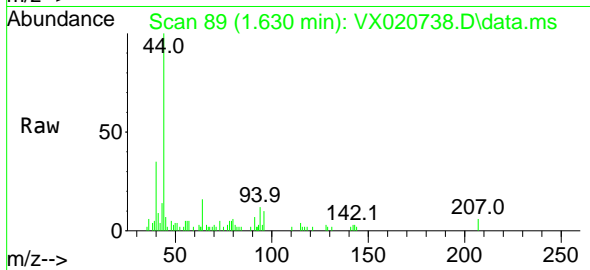




#5  
 Bromomethane  
 Concen: 0.30 ug/l  
 RT: 1.630 min Scan# 89  
 Delta R.T. 0.006 min  
 Lab File: VX020738.D  
 Acq: 25 Jan 2021 20:30

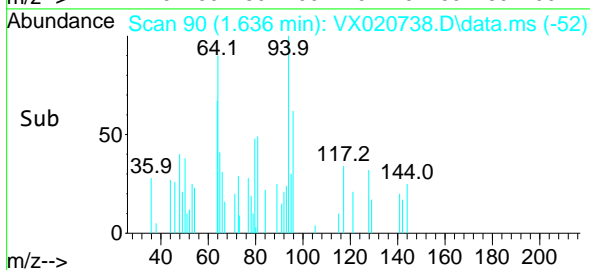
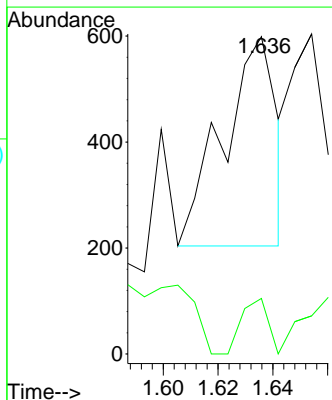
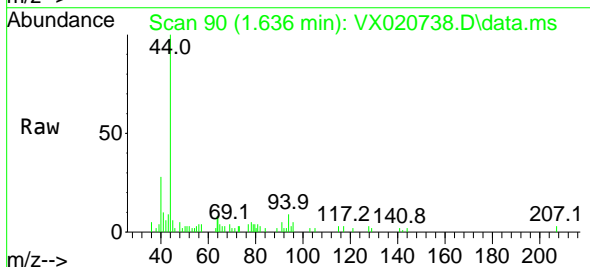
Instrument :  
 MSVOA\_X  
 ClientSampled :

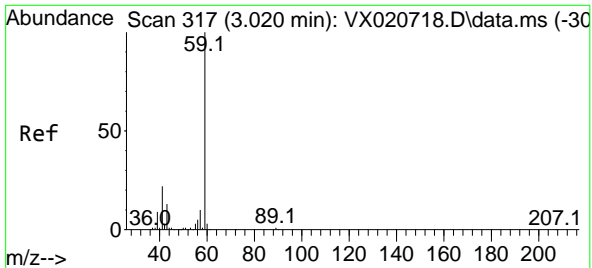
Tgt Ion: 94 Resp: 655  
 Ion Ratio Lower Upper  
 94 100  
 96 81.1 76.4 114.6



#6  
 Chloroethane  
 Concen: 0.21 ug/l  
 RT: 1.636 min Scan# 90  
 Delta R.T. -0.067 min  
 Lab File: VX020738.D  
 Acq: 25 Jan 2021 20:30

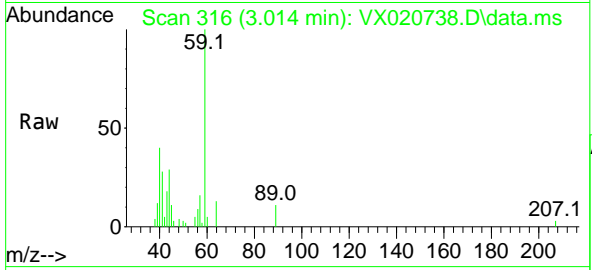
Tgt Ion: 64 Resp: 533  
 Ion Ratio Lower Upper  
 64 100  
 66 26.6 25.4 38.0



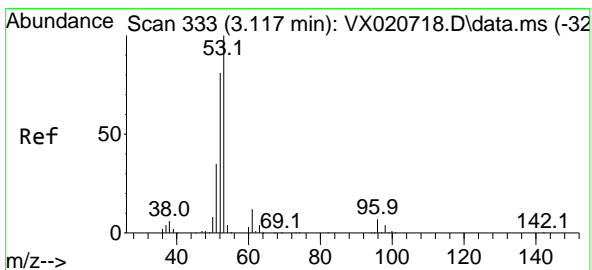
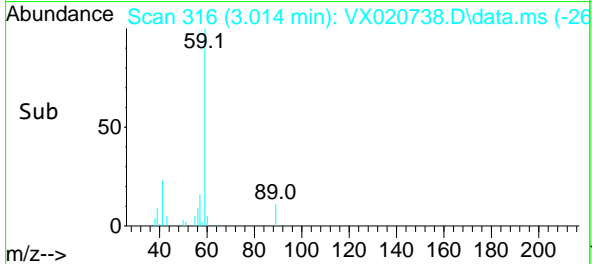
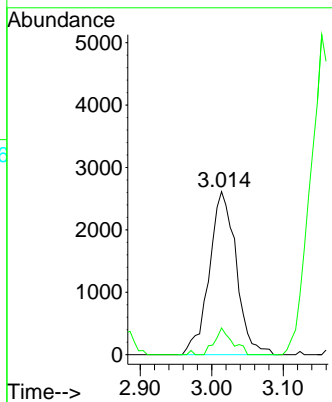


#11  
 Tert butyl alcohol  
 Concen: 8.34 ug/l  
 RT: 3.014 min Scan# 316  
 Delta R.T. -0.006 min  
 Lab File: VX020738.D  
 Acq: 25 Jan 2021 20:30

Instrument :  
 MSVOA\_X  
 ClientSampled :

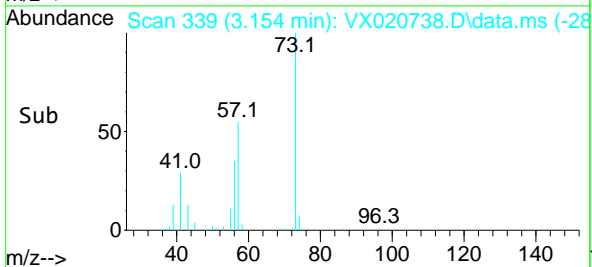
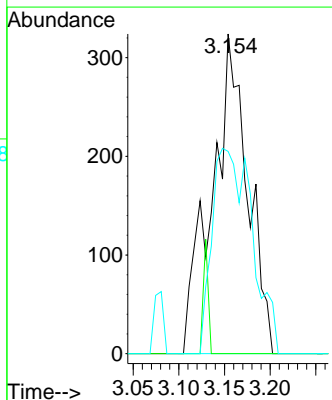
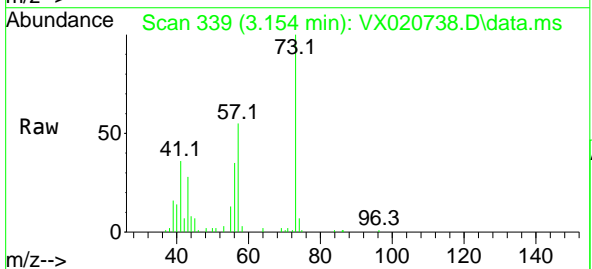


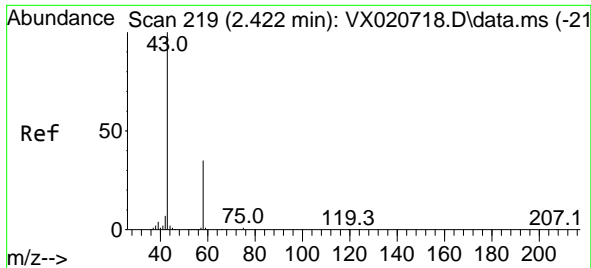
Tgt Ion: 59 Resp: 6833  
 Ion Ratio Lower Upper  
 59 100  
 57 10.7 7.8 11.8



#15  
 Acrylonitrile  
 Concen: 0.43 ug/l  
 RT: 3.154 min Scan# 339  
 Delta R.T. 0.037 min  
 Lab File: VX020738.D  
 Acq: 25 Jan 2021 20:30

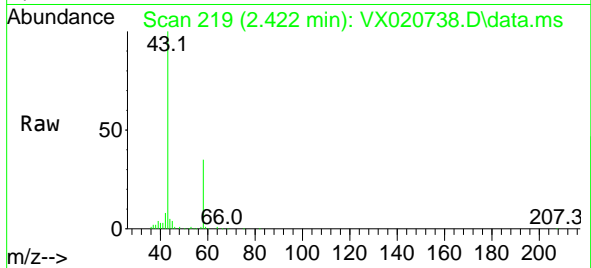
Tgt Ion: 53 Resp: 888  
 Ion Ratio Lower Upper  
 53 100  
 52 0.0 65.3 97.9#  
 51 71.5 28.2 42.2#



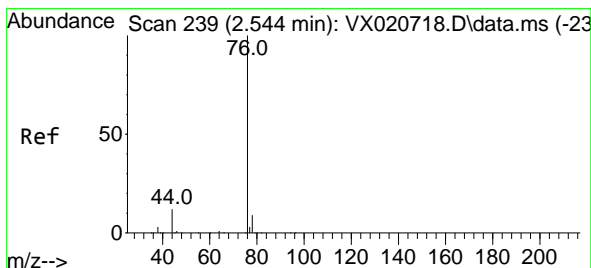
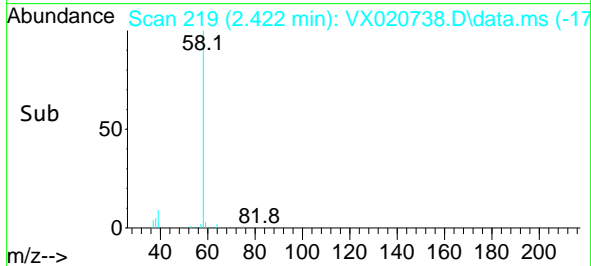
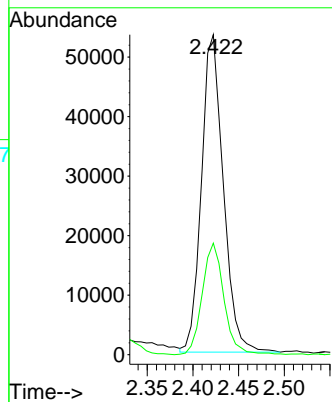


#16  
 Acetone  
 Concen: 53.26 ug/l  
 RT: 2.422 min Scan# 219  
 Delta R.T. 0.000 min  
 Lab File: VX020738.D  
 Acq: 25 Jan 2021 20:30

Instrument :  
 MSVOA\_X  
 ClientSampled :

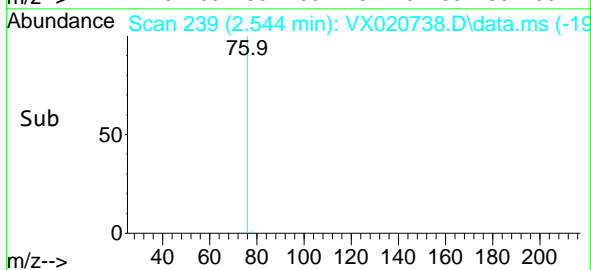
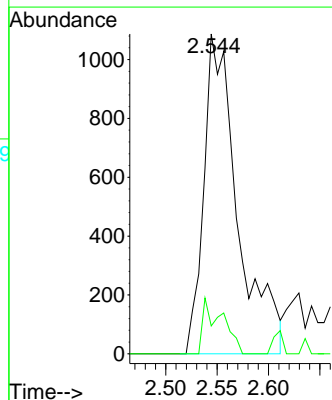
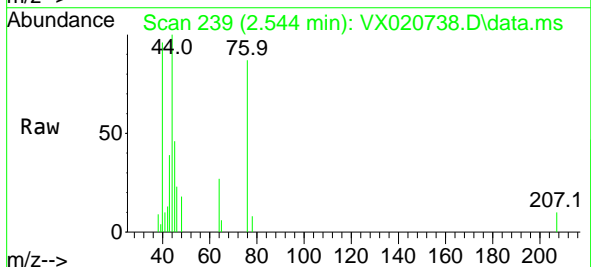


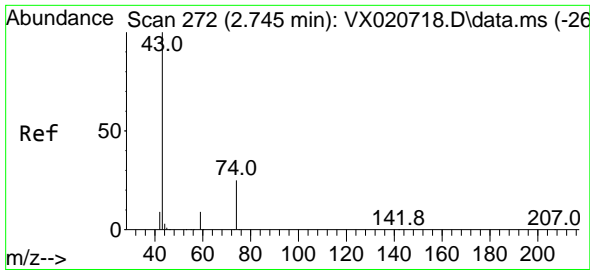
Tgt Ion: 43 Resp: 88587  
 Ion Ratio Lower Upper  
 43 100  
 58 35.0 27.8 41.8



#17  
 Carbon Disulfide  
 Concen: 1.15 ug/l  
 RT: 2.544 min Scan# 239  
 Delta R.T. 0.000 min  
 Lab File: VX020738.D  
 Acq: 25 Jan 2021 20:30

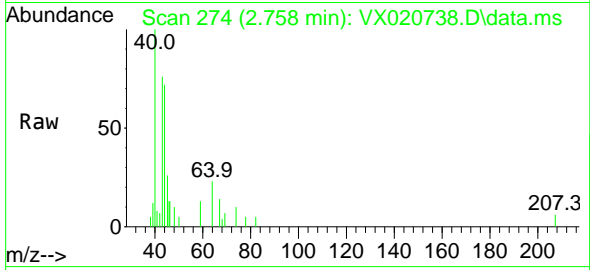
Tgt Ion: 76 Resp: 2490  
 Ion Ratio Lower Upper  
 76 100  
 78 8.7 7.2 10.8



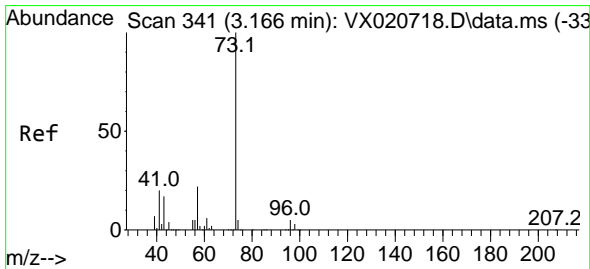
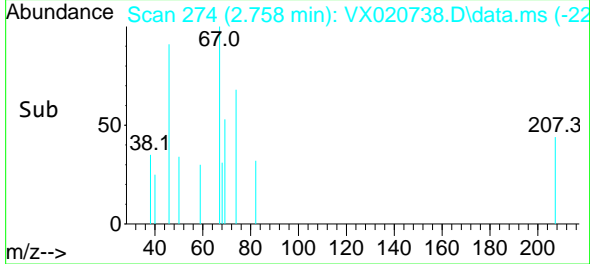
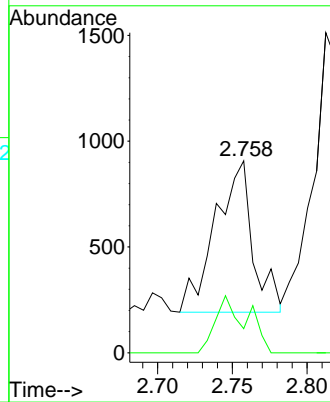


#18  
 Methyl Acetate  
 Concen: 0.29 ug/l  
 RT: 2.758 min Scan# 274  
 Delta R.T. 0.013 min  
 Lab File: VX020738.D  
 Acq: 25 Jan 2021 20:30

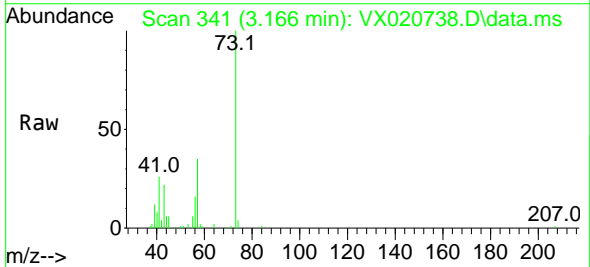
Instrument :  
 MSVOA\_X  
 ClientSampled :



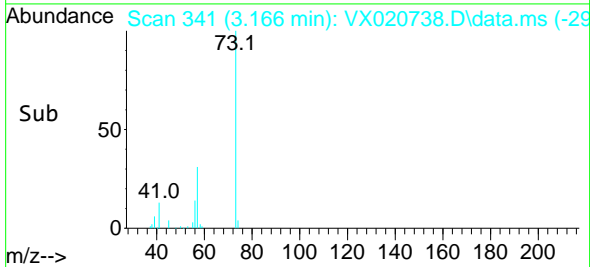
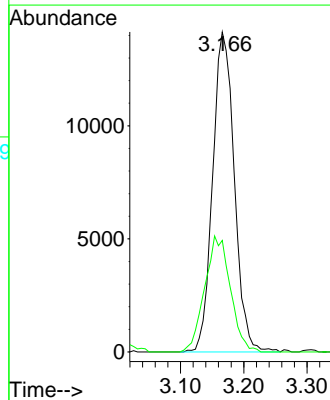
Tgt Ion: 43 Resp: 1248  
 Ion Ratio Lower Upper  
 43 100  
 74 31.6 21.9 32.9



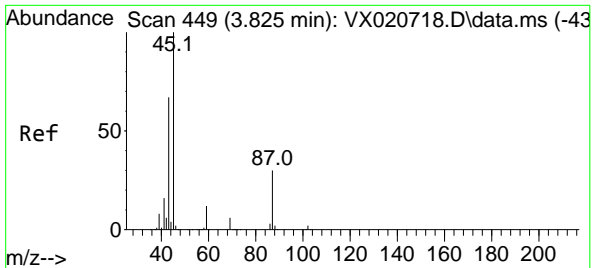
#19  
 Methyl tert-butyl Ether  
 Concen: 2.91 ug/l  
 RT: 3.166 min Scan# 341  
 Delta R.T. 0.000 min  
 Lab File: VX020738.D  
 Acq: 25 Jan 2021 20:30



Tgt Ion: 73 Resp: 33596  
 Ion Ratio Lower Upper  
 73 100  
 57 34.8 17.1 25.7#

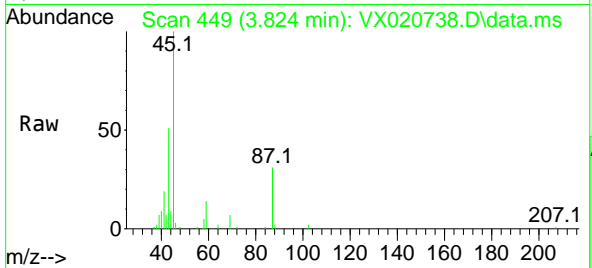






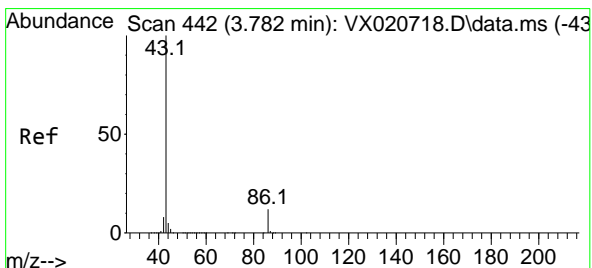
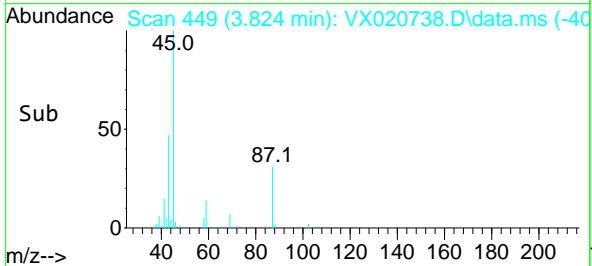
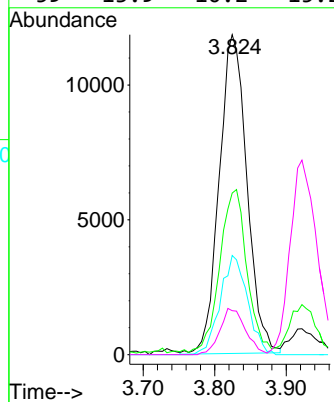
#22  
 Diisopropyl ether  
 Concen: 2.81 ug/l  
 RT: 3.824 min Scan# 449  
 Delta R.T. -0.001 min  
 Lab File: VX020738.D  
 Acq: 25 Jan 2021 20:30

Instrument :  
 MSVOA\_X  
 ClientSampled :

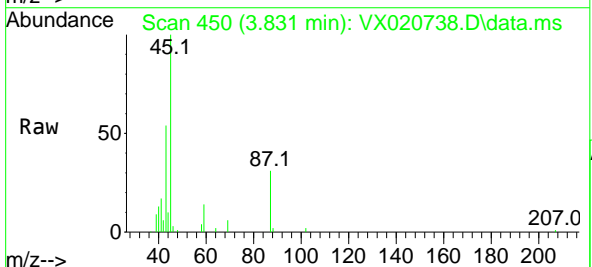


Tgt Ion: 45 Resp: 31814

Ion	Ratio	Lower	Upper
45	100		
43	49.9	58.0	87.0#
87	31.2	25.4	38.0
59	13.9	10.2	15.2

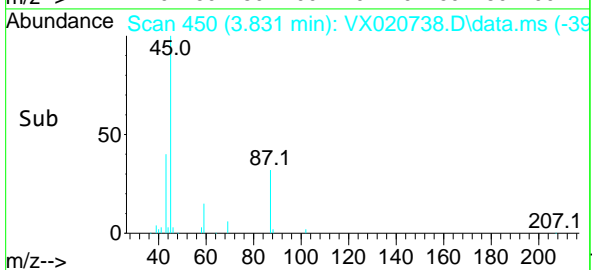
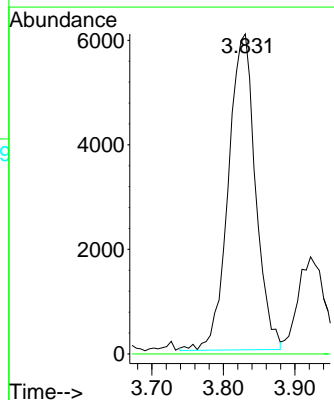


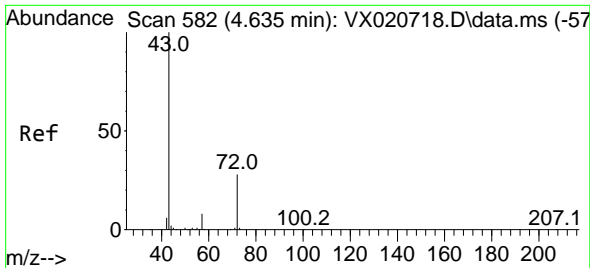
#23  
 Vinyl Acetate  
 Concen: 1.71 ug/l  
 RT: 3.831 min Scan# 450  
 Delta R.T. 0.049 min  
 Lab File: VX020738.D  
 Acq: 25 Jan 2021 20:30



Tgt Ion: 43 Resp: 15948

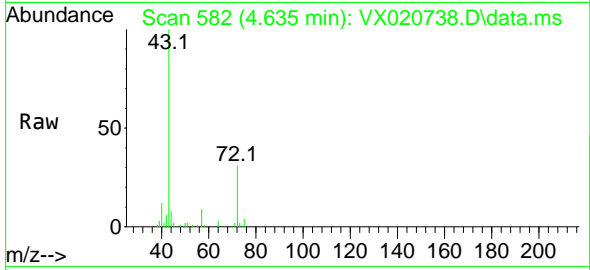
Ion	Ratio	Lower	Upper
43	100		
86	0.0	9.9	14.9#



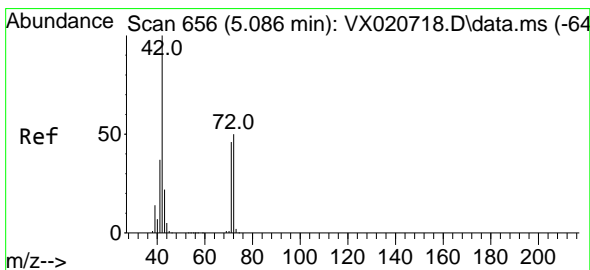
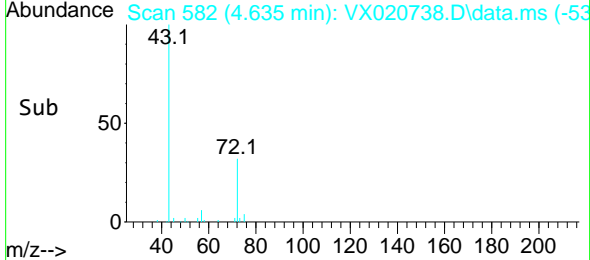
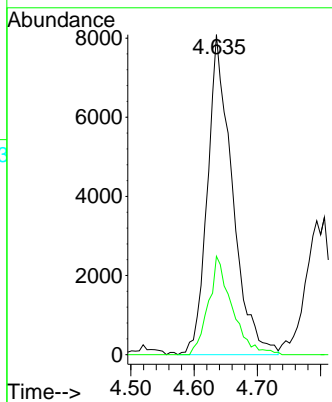


#25  
 2-Butanone  
 Concen: 8.47 ug/l  
 RT: 4.635 min Scan# 582  
 Delta R.T. 0.000 min  
 Lab File: VX020738.D  
 Acq: 25 Jan 2021 20:30

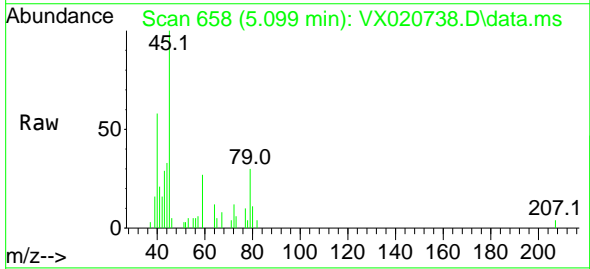
Instrument :  
 MSVOA\_X  
 ClientSampled :



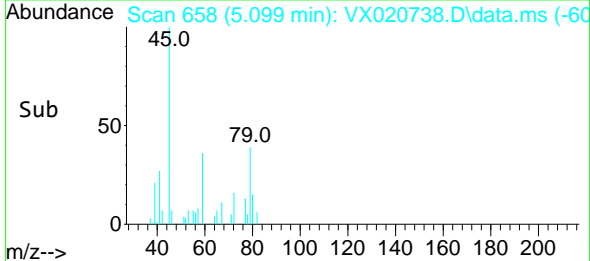
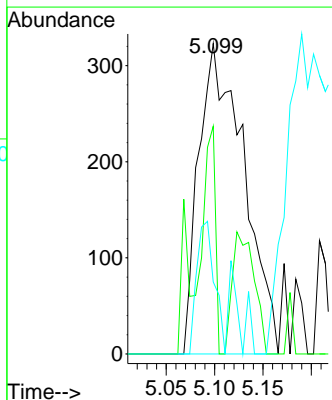
Tgt Ion: 43 Resp: 22056  
 Ion Ratio Lower Upper  
 43 100  
 72 30.8 23.7 35.5

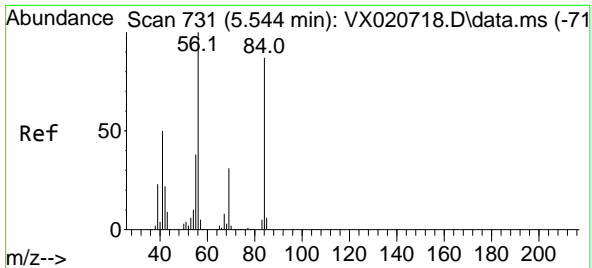


#29  
 Tetrahydrofuran  
 Concen: 0.62 ug/l  
 RT: 5.099 min Scan# 658  
 Delta R.T. 0.013 min  
 Lab File: VX020738.D  
 Acq: 25 Jan 2021 20:30



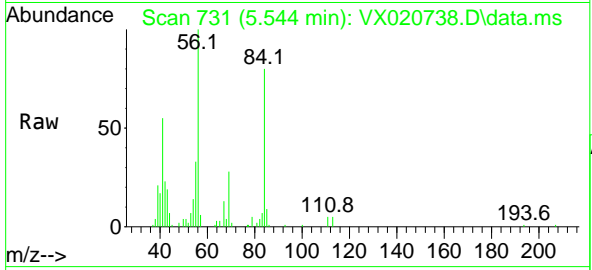
Tgt Ion: 42 Resp: 1046  
 Ion Ratio Lower Upper  
 42 100  
 72 19.3 41.7 62.5#  
 71 16.9 38.4 57.6#





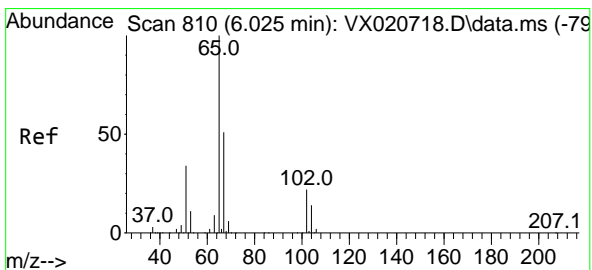
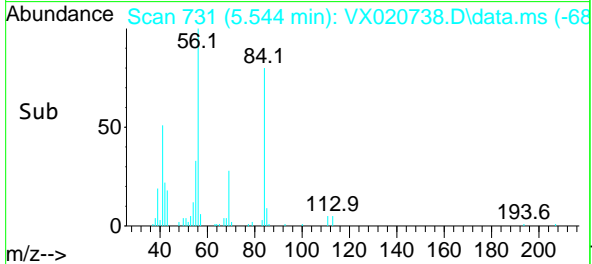
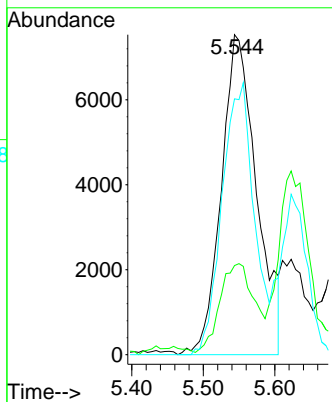
#31  
 Cyclohexane  
 Concen: 4.37 ug/l  
 RT: 5.544 min Scan# 731  
 Delta R.T. -0.000 min  
 Lab File: VX020738.D  
 Acq: 25 Jan 2021 20:30

Instrument :  
 MSVOA\_X  
 ClientSampled :



Tgt Ion: 56 Resp: 25784

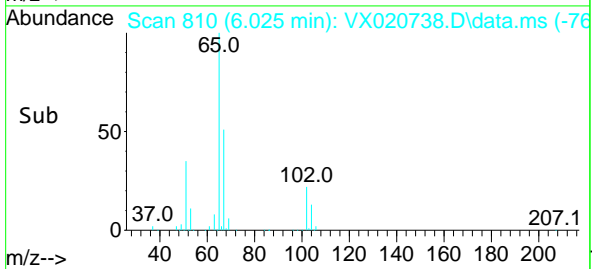
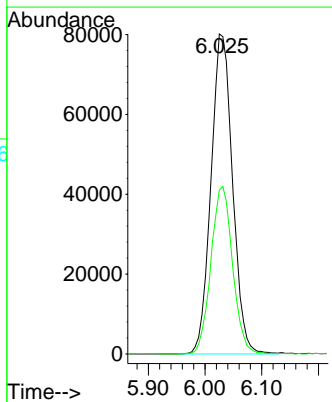
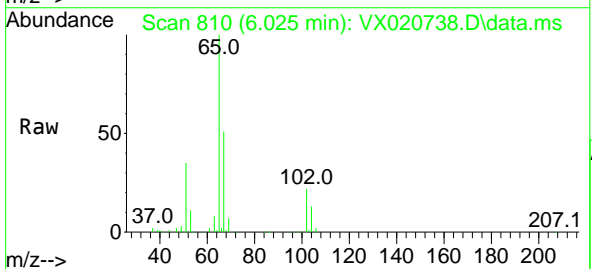
Ion	Ratio	Lower	Upper
56	100		
69	25.9	25.3	37.9
84	79.9	71.4	107.0

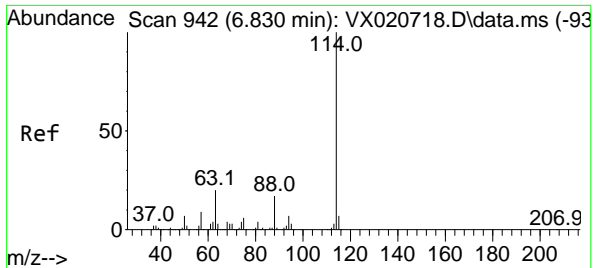


#33  
 1,2-Dichloroethane-d4  
 Concen: 48.19 ug/l  
 RT: 6.025 min Scan# 810  
 Delta R.T. 0.000 min  
 Lab File: VX020738.D  
 Acq: 25 Jan 2021 20:30

Tgt Ion: 65 Resp: 211368

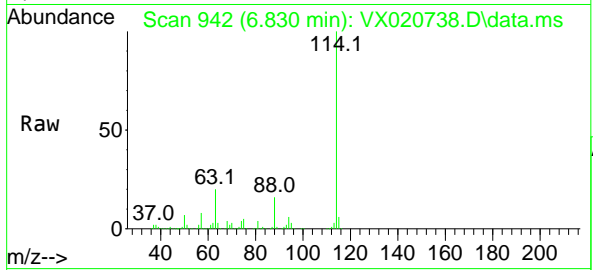
Ion	Ratio	Lower	Upper
65	100		
67	52.6	0.0	105.4



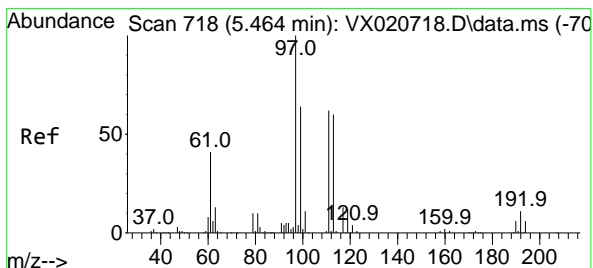
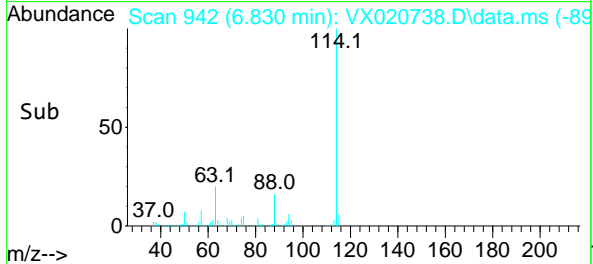
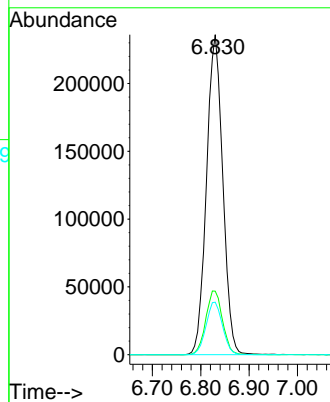


#34  
 1,4-Difluorobenzene  
 Concen: 50.00 ug/l  
 RT: 6.830 min Scan# 942  
 Delta R.T. 0.000 min  
 Lab File: VX020738.D  
 Acq: 25 Jan 2021 20:30

Instrument :  
 MSVOA\_X  
 ClientSampled :

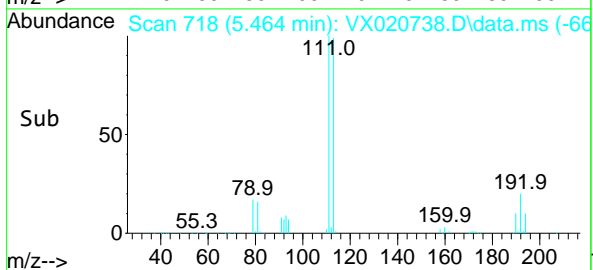
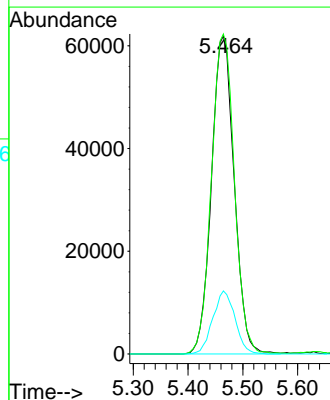
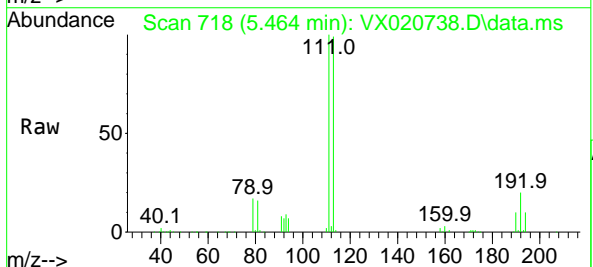


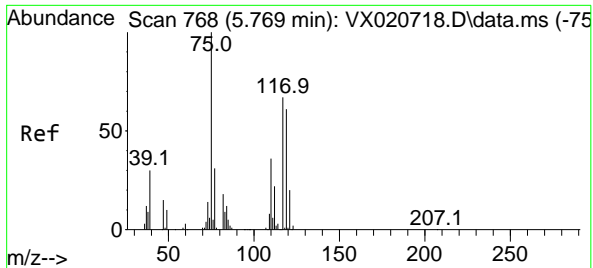
Tgt Ion:114 Resp: 551110  
 Ion Ratio Lower Upper  
 114 100  
 63 19.8 0.0 40.8  
 88 16.4 0.0 32.8



#35  
 Dibromofluoromethane  
 Concen: 47.11 ug/l  
 RT: 5.464 min Scan# 718  
 Delta R.T. 0.000 min  
 Lab File: VX020738.D  
 Acq: 25 Jan 2021 20:30

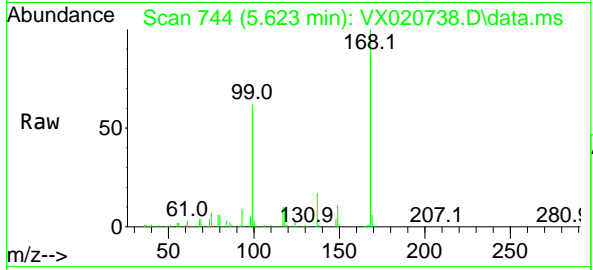
Tgt Ion:113 Resp: 177832  
 Ion Ratio Lower Upper  
 113 100  
 111 101.6 81.9 122.9  
 192 19.4 16.7 25.1





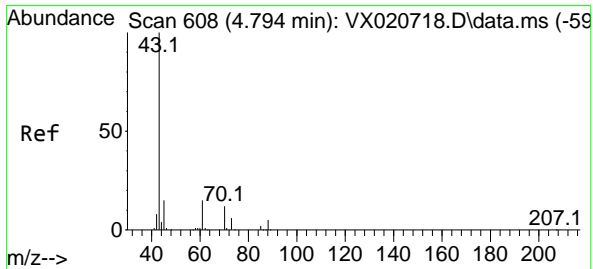
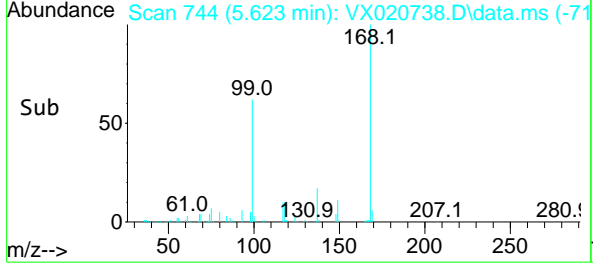
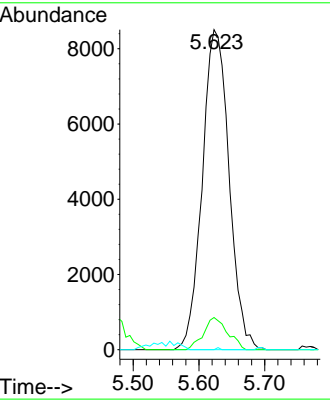
#36  
 1,1-Dichloropropene  
 Concen: 4.37 ug/l  
 RT: 5.623 min Scan# 744  
 Delta R.T. -0.146 min  
 Lab File: VX020738.D  
 Acq: 25 Jan 2021 20:30

Instrument :  
 MSVOA\_X  
 ClientSampled :

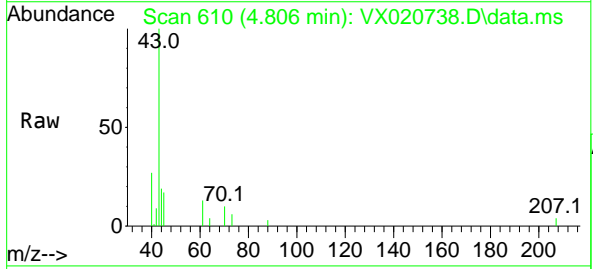


Tgt Ion: 75 Resp: 24145

Ion	Ratio	Lower	Upper
75	100		
110	9.0	18.1	54.4#
77	0.0	25.3	37.9#

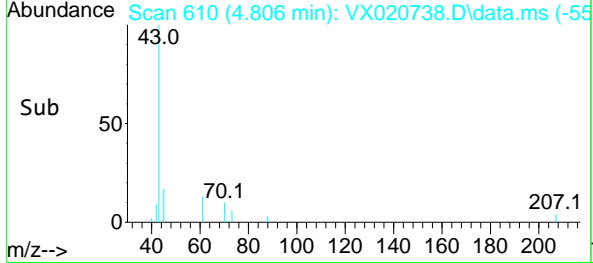
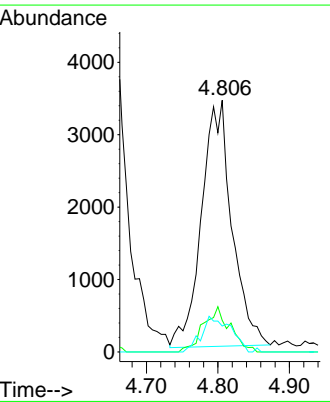


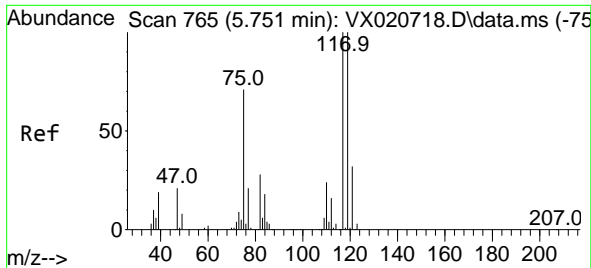
#37  
 Ethyl Acetate  
 Concen: 1.92 ug/l  
 RT: 4.806 min Scan# 610  
 Delta R.T. 0.012 min  
 Lab File: VX020738.D  
 Acq: 25 Jan 2021 20:30



Tgt Ion: 43 Resp: 10047

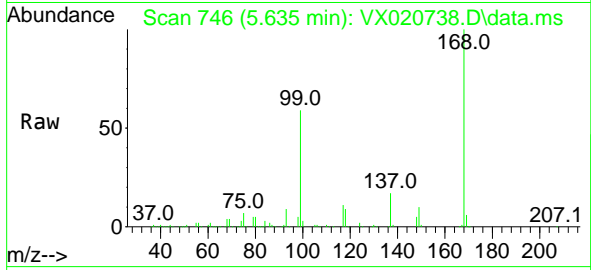
Ion	Ratio	Lower	Upper
43	100		
61	16.2	12.8	19.2
70	13.9	10.5	15.7





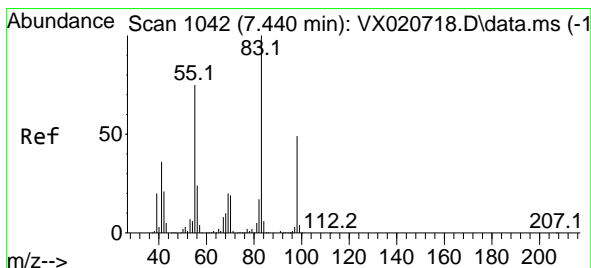
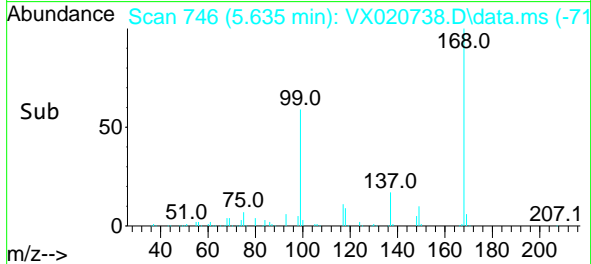
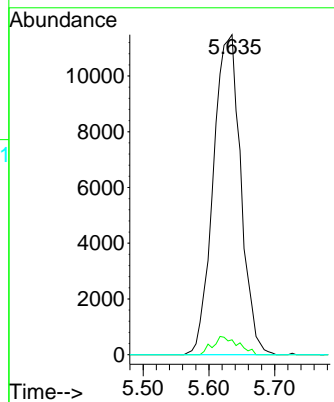
#38  
 Carbon Tetrachloride  
 Concen: 5.74 ug/l  
 RT: 5.635 min Scan# 746  
 Delta R.T. -0.116 min  
 Lab File: VX020738.D  
 Acq: 25 Jan 2021 20:30

Instrument :  
 MSVOA\_X  
 ClientSampled :



Tgt Ion:117 Resp: 33363

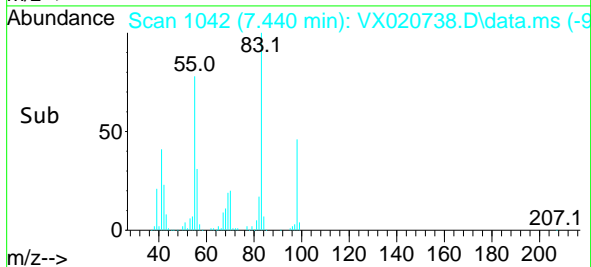
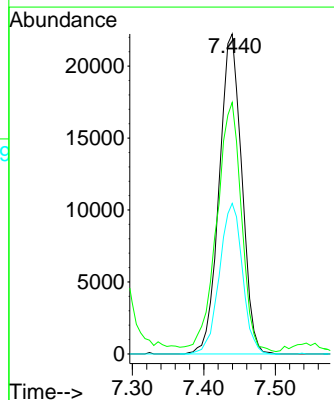
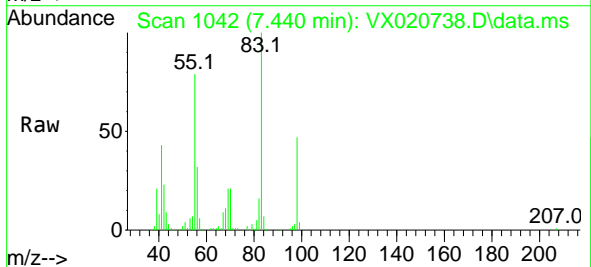
Ion	Ratio	Lower	Upper
117	100		
119	4.6	76.2	114.2#
121	0.0	24.8	37.2#

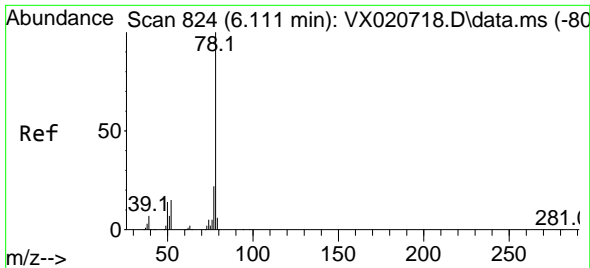


#39  
 Methylcyclohexane  
 Concen: 7.70 ug/l  
 RT: 7.440 min Scan# 1042  
 Delta R.T. -0.000 min  
 Lab File: VX020738.D  
 Acq: 25 Jan 2021 20:30

Tgt Ion: 83 Resp: 48528

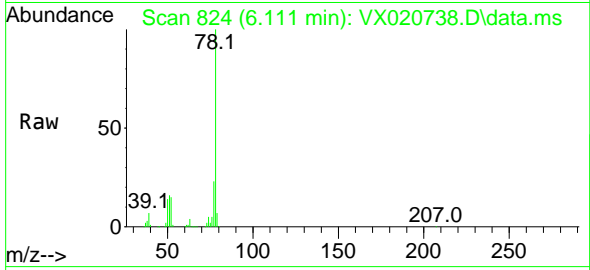
Ion	Ratio	Lower	Upper
83	100		
55	77.6	58.9	88.3
98	47.0	38.1	57.1



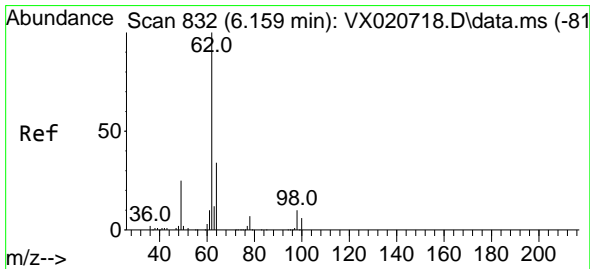
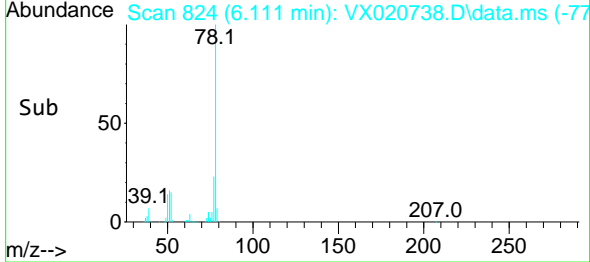
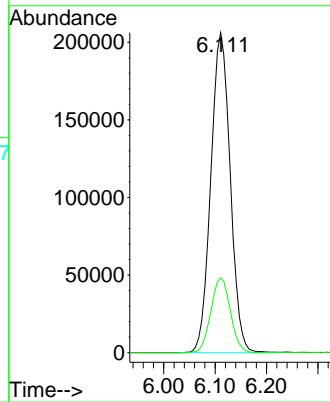


#40  
Benzene  
Concen: 33.13 ug/l  
RT: 6.111 min Scan# 824  
Delta R.T. -0.000 min  
Lab File: VX020738.D  
Acq: 25 Jan 2021 20:30

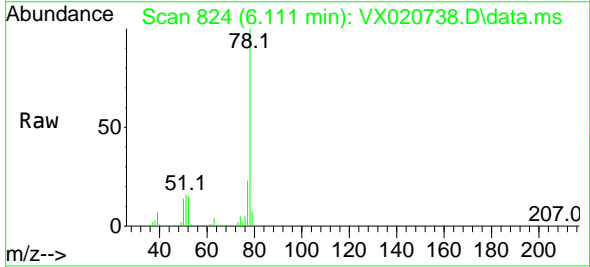
Instrument :  
MSVOA\_X  
ClientSampled :



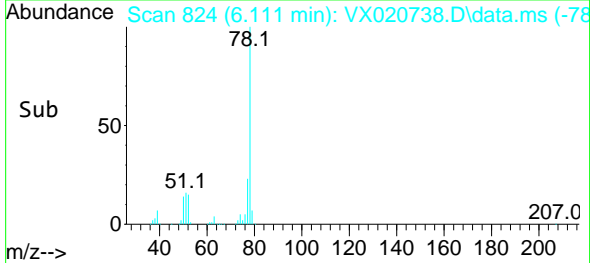
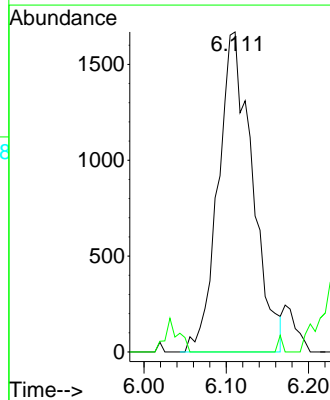
Tgt Ion: 78 Resp: 539728  
Ion Ratio Lower Upper  
78 100  
77 23.4 18.9 28.3

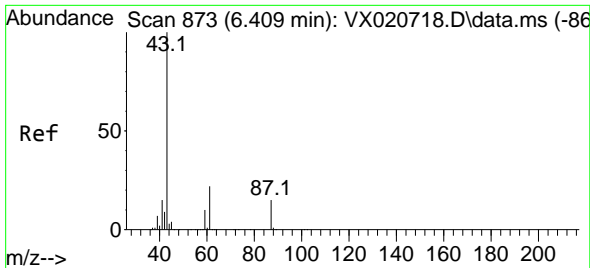


#42  
1,2-Dichloroethane  
Concen: 0.83 ug/l  
RT: 6.111 min Scan# 824  
Delta R.T. -0.048 min  
Lab File: VX020738.D  
Acq: 25 Jan 2021 20:30



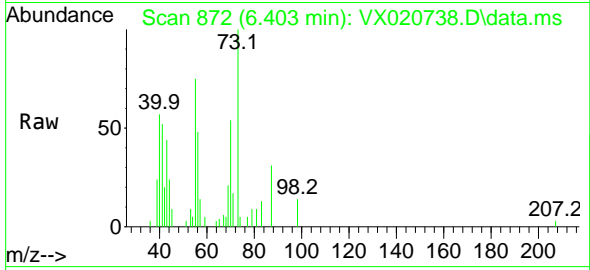
Tgt Ion: 62 Resp: 4802  
Ion Ratio Lower Upper  
62 100  
98 0.0 0.0 20.2





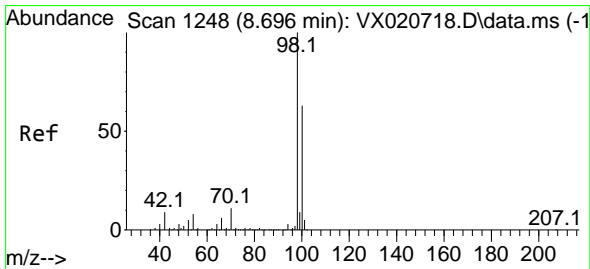
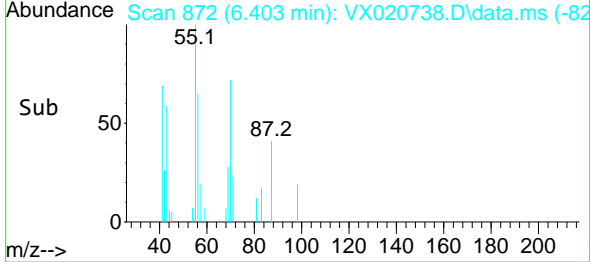
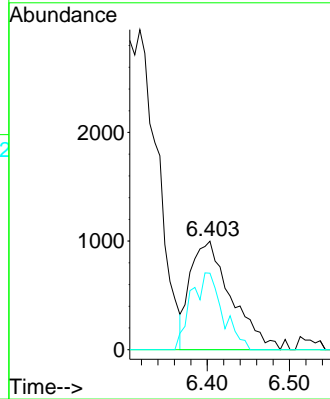
#43  
 Isopropyl Acetate  
 Concen: 0.41 ug/l  
 RT: 6.403 min Scan# 872  
 Delta R.T. -0.006 min  
 Lab File: VX020738.D  
 Acq: 25 Jan 2021 20:30

Instrument :  
 MSVOA\_X  
 ClientSampled :



Tgt Ion: 43 Resp: 3447

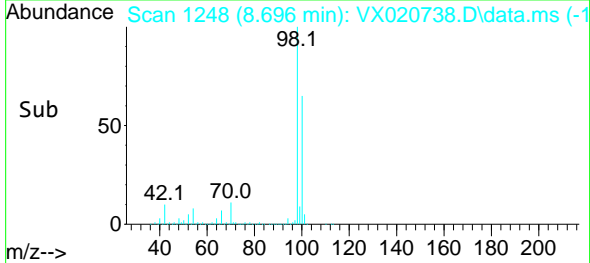
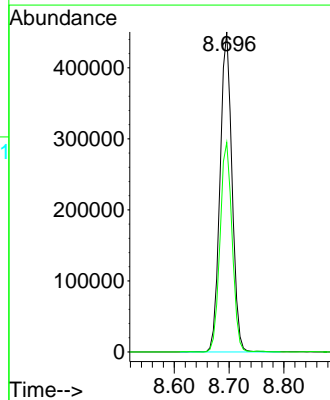
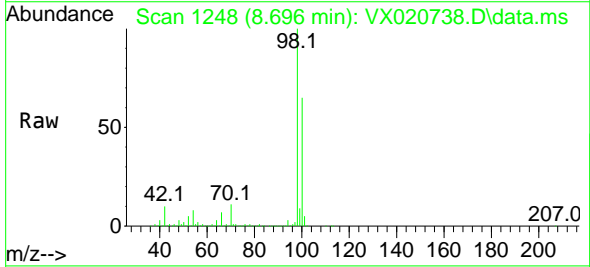
Ion	Ratio	Lower	Upper
43	100		
61	0.0	18.2	27.4#
87	55.0	12.5	18.7#



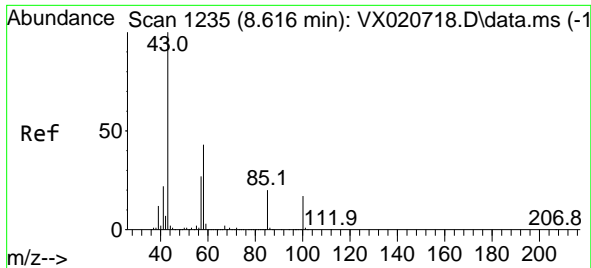
#50  
 Toluene-d8  
 Concen: 49.35 ug/l  
 RT: 8.696 min Scan# 1248  
 Delta R.T. -0.000 min  
 Lab File: VX020738.D  
 Acq: 25 Jan 2021 20:30

Tgt Ion: 98 Resp: 682967

Ion	Ratio	Lower	Upper
98	100		
100	65.9	51.9	77.9

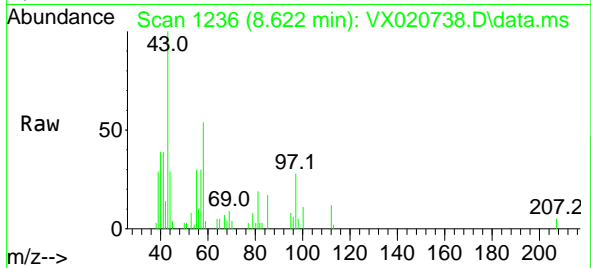




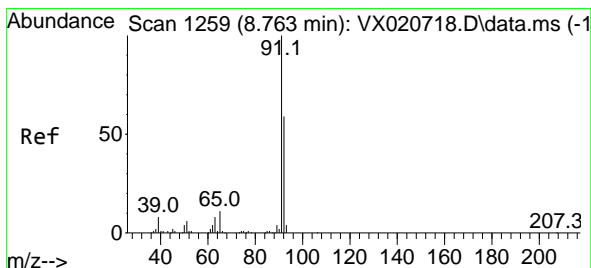
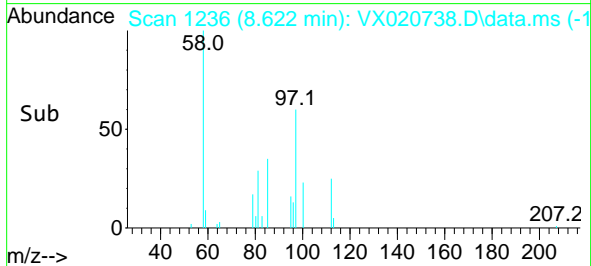
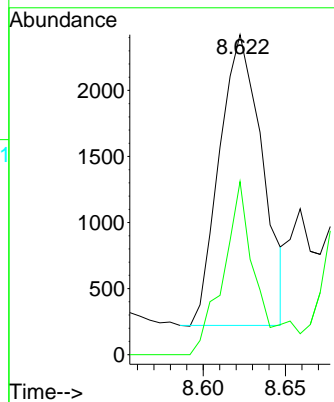


#51  
 4-Methyl-2-Pentanone  
 Concen: 0.76 ug/l  
 RT: 8.622 min Scan# 1236  
 Delta R.T. 0.006 min  
 Lab File: VX020738.D  
 Acq: 25 Jan 2021 20:30

Instrument :  
 MSVOA\_X  
 ClientSampled :

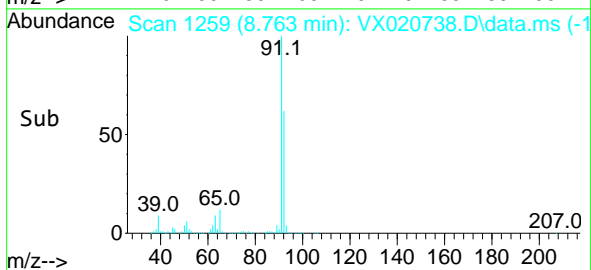
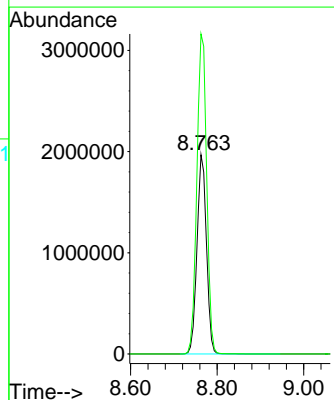
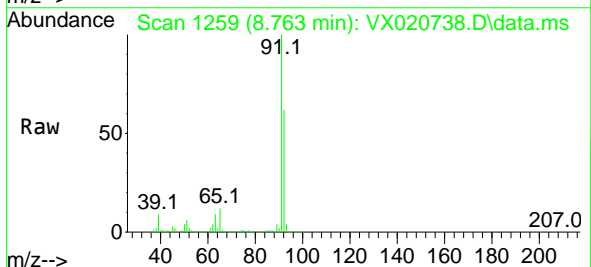


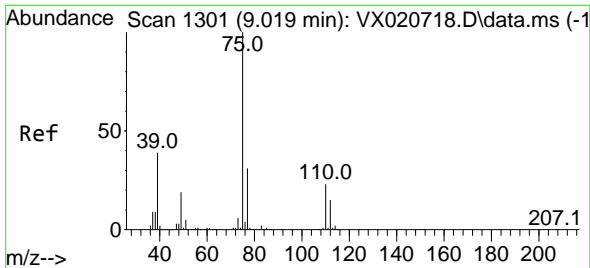
Tgt Ion: 43 Resp: 3998  
 Ion Ratio Lower Upper  
 43 100  
 58 47.5 35.4 53.0



#52  
 Toluene  
 Concen: 290.31 ug/l  
 RT: 8.763 min Scan# 1259  
 Delta R.T. -0.000 min  
 Lab File: VX020738.D  
 Acq: 25 Jan 2021 20:30

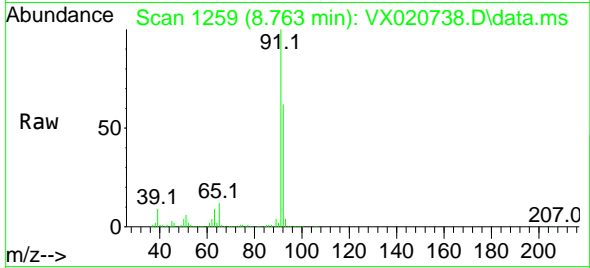
Tgt Ion: 92 Resp: 2973529  
 Ion Ratio Lower Upper  
 92 100  
 91 167.2 137.1 205.7



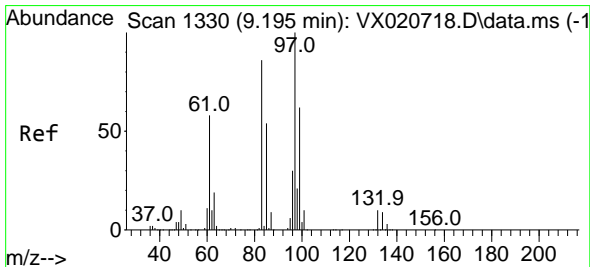
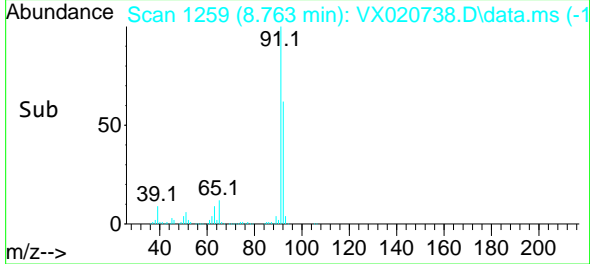
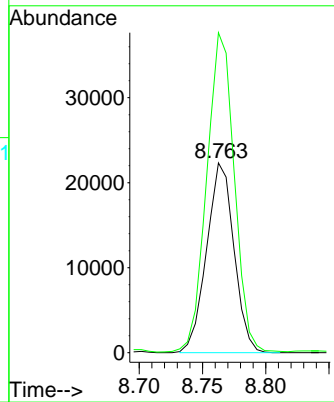


#53  
 t-1,3-Dichloropropene  
 Concen: 5.30 ug/l  
 RT: 8.763 min Scan# 1259  
 Delta R.T. -0.256 min  
 Lab File: VX020738.D  
 Acq: 25 Jan 2021 20:30

Instrument :  
 MSVOA\_X  
 ClientSampled :

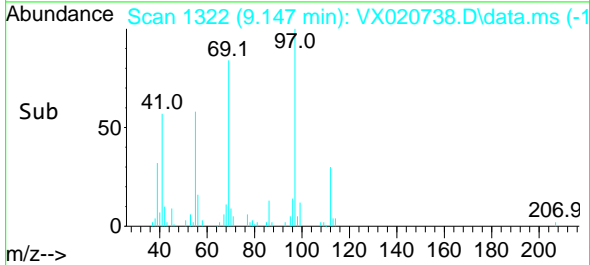
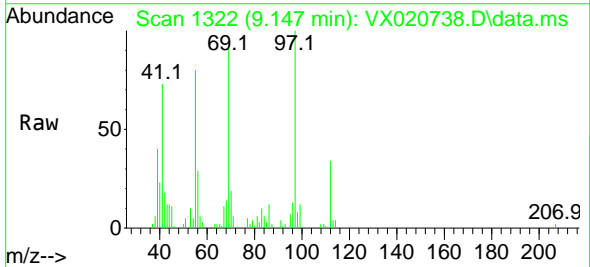
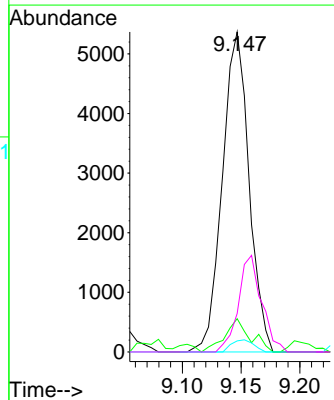


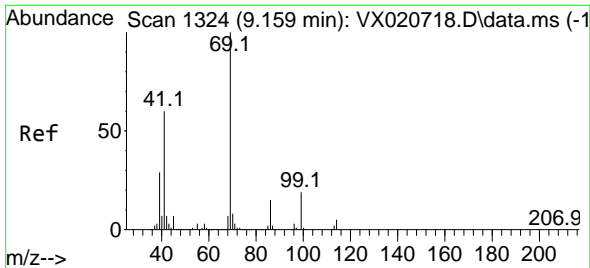
Tgt Ion: 75 Resp: 33603  
 Ion Ratio Lower Upper  
 75 100  
 77 168.0 24.9 37.3#



#55  
 1,1,2-Trichloroethane  
 Concen: 1.99 ug/l  
 RT: 9.147 min Scan# 1322  
 Delta R.T. -0.048 min  
 Lab File: VX020738.D  
 Acq: 25 Jan 2021 20:30

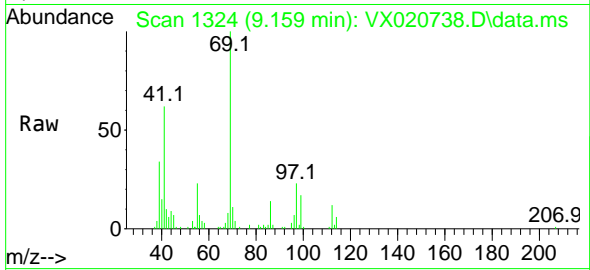
Tgt Ion: 97 Resp: 8482  
 Ion Ratio Lower Upper  
 97 100  
 83 10.4 69.3 103.9#  
 85 3.4 44.3 66.5#  
 99 12.0 50.3 75.5#





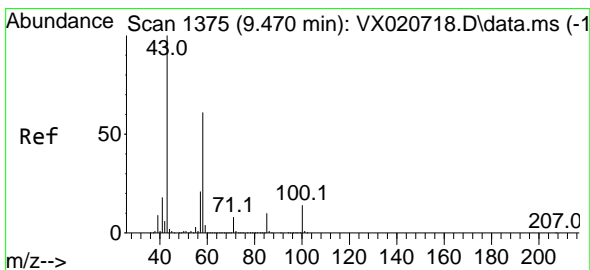
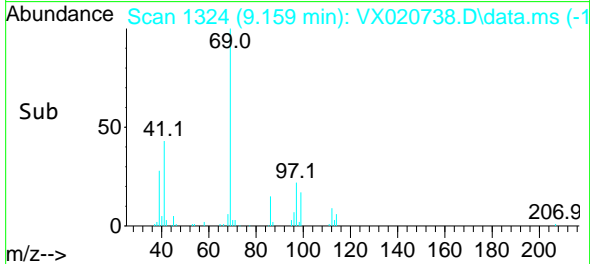
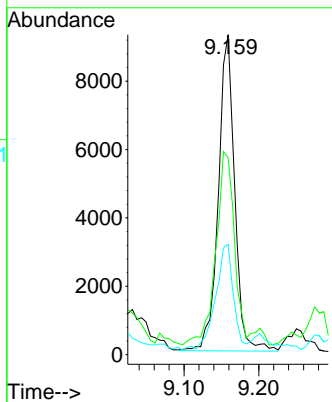
#56  
 Ethyl methacrylate  
 Concen: 4.74 ug/l  
 RT: 9.159 min Scan# 1324  
 Delta R.T. -0.000 min  
 Lab File: VX020738.D  
 Acq: 25 Jan 2021 20:30

Instrument :  
 MSVOA\_X  
 ClientSampled :

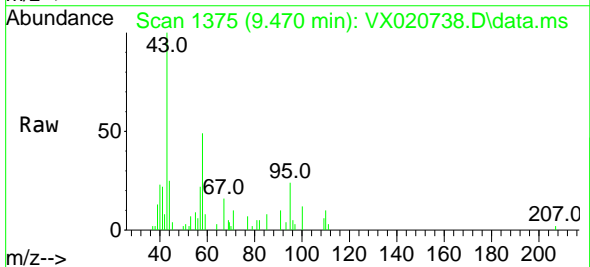


Tgt Ion: 69 Resp: 14081

Ion	Ratio	Lower	Upper
69	100		
41	69.5	46.8	70.2
39	36.9	24.7	37.1

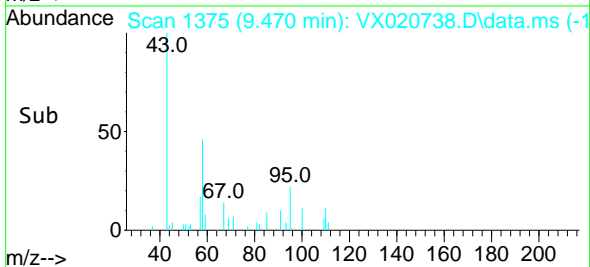
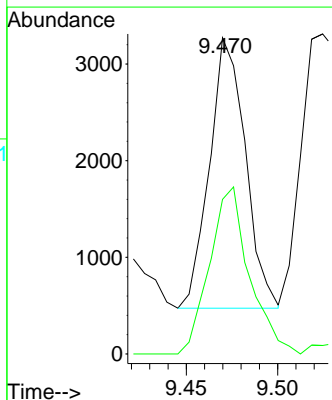


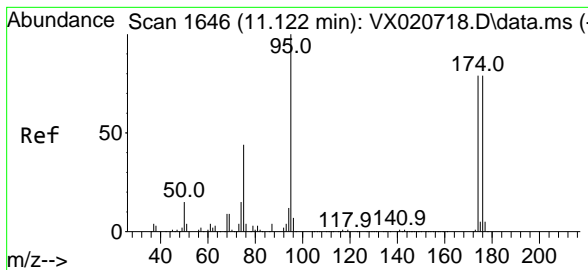
#59  
 2-Hexanone  
 Concen: 0.97 ug/l  
 RT: 9.470 min Scan# 1375  
 Delta R.T. -0.000 min  
 Lab File: VX020738.D  
 Acq: 25 Jan 2021 20:30



Tgt Ion: 43 Resp: 3821

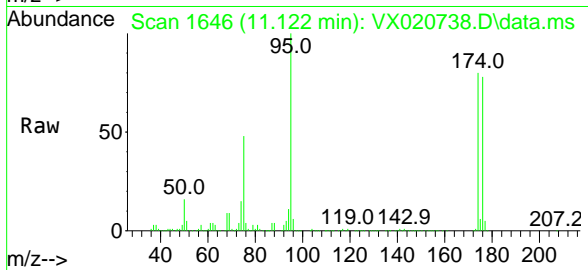
Ion	Ratio	Lower	Upper
43	100		
58	68.4	30.9	92.8



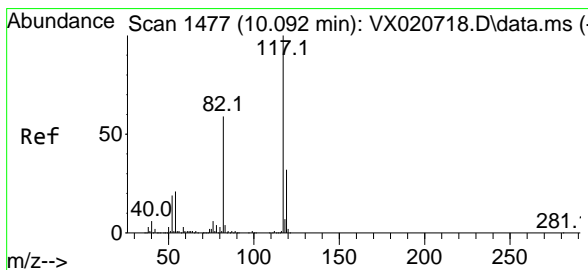
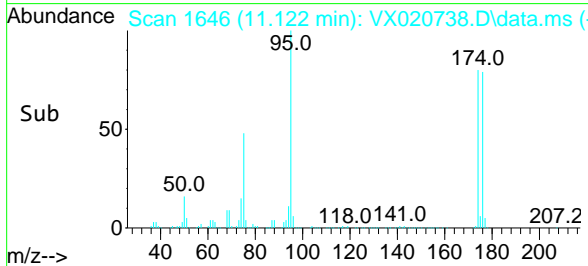
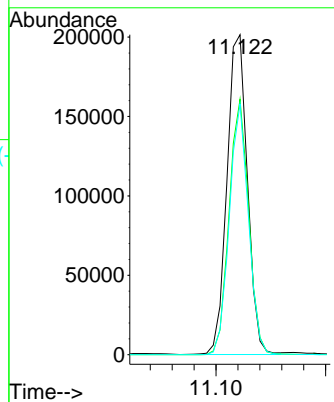


#62  
 4-Bromofluorobenzene  
 Concen: 48.50 ug/l  
 RT: 11.122 min Scan# 1646  
 Delta R.T. -0.000 min  
 Lab File: VX020738.D  
 Acq: 25 Jan 2021 20:30

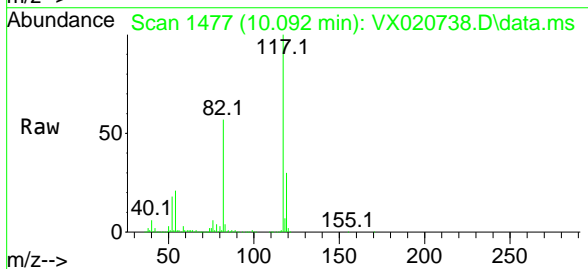
Instrument :  
 MSVOA\_X  
 ClientSampled :



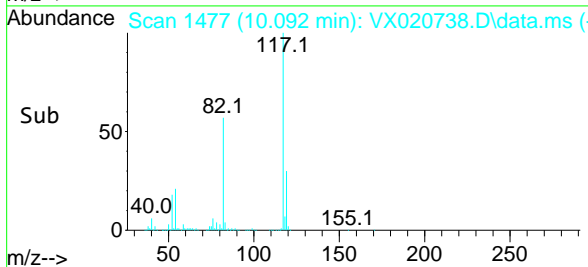
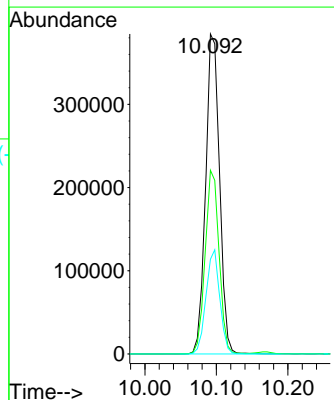
Tgt Ion: 95 Resp: 260661  
 Ion Ratio Lower Upper  
 95 100  
 174 76.7 0.0 154.6  
 176 73.3 0.0 155.8

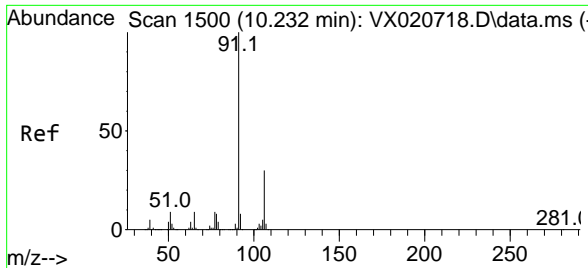


#63  
 Chlorobenzene-d5  
 Concen: 50.00 ug/l  
 RT: 10.092 min Scan# 1477  
 Delta R.T. -0.000 min  
 Lab File: VX020738.D  
 Acq: 25 Jan 2021 20:30



Tgt Ion: 117 Resp: 520933  
 Ion Ratio Lower Upper  
 117 100  
 82 57.3 47.4 71.2  
 119 29.6 26.6 39.8

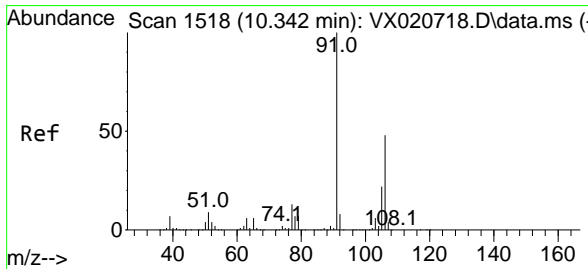
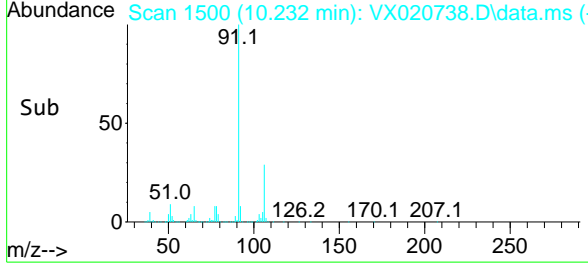
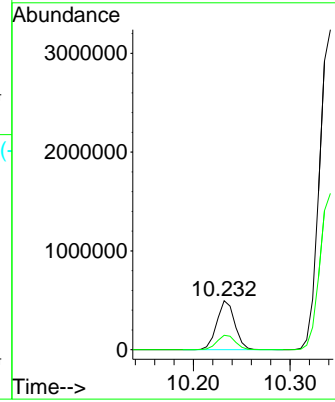
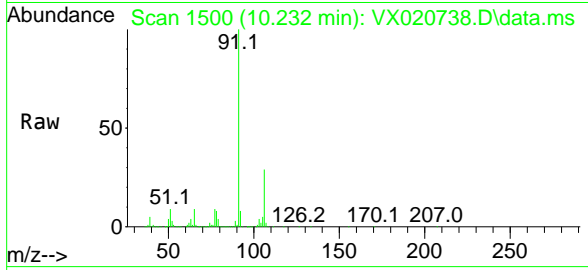




#67  
 Ethyl Benzene  
 Concen: 32.50 ug/l  
 RT: 10.232 min Scan# 1500  
 Delta R.T. -0.000 min  
 Lab File: VX020738.D  
 Acq: 25 Jan 2021 20:30

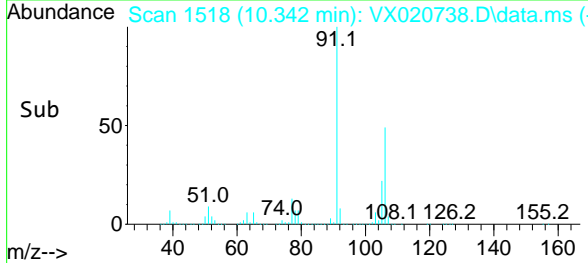
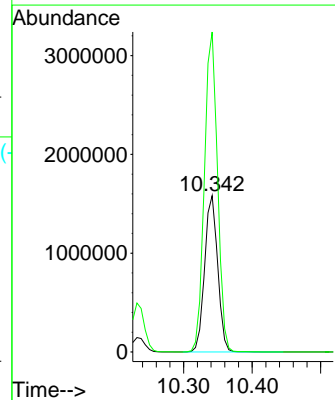
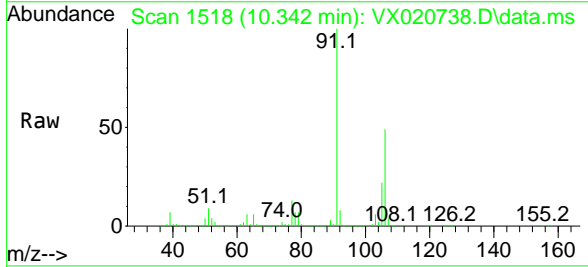
Instrument :  
 MSVOA\_X  
 ClientSampled :

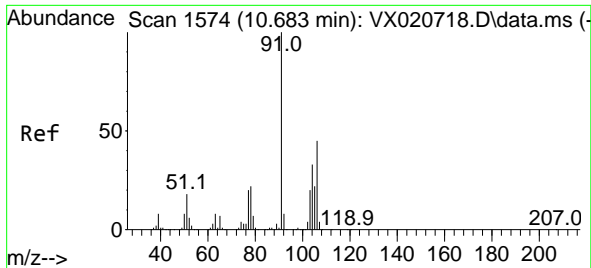
Tgt Ion: 91 Resp: 635205  
 Ion Ratio Lower Upper  
 91 100  
 106 29.4 24.6 37.0



#68  
 m/p-Xylenes  
 Concen: 287.63 ug/l  
 RT: 10.342 min Scan# 1518  
 Delta R.T. -0.000 min  
 Lab File: VX020738.D  
 Acq: 25 Jan 2021 20:30

Tgt Ion: 106 Resp: 2095981  
 Ion Ratio Lower Upper  
 106 100  
 91 206.1 162.8 244.2

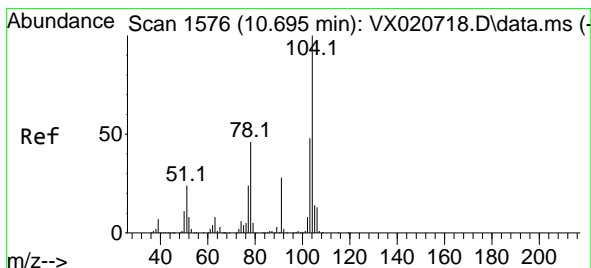
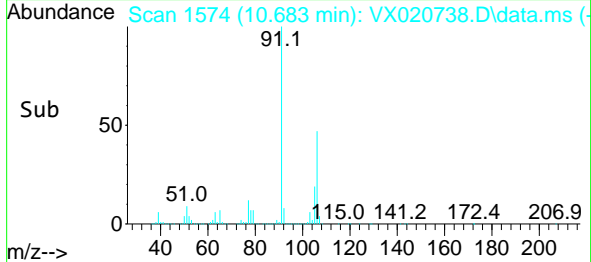
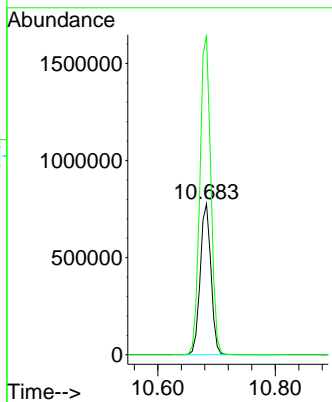
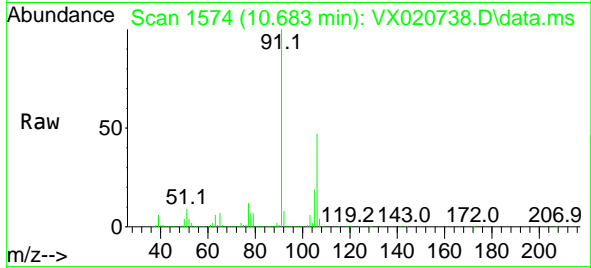




#69  
 o-Xylene  
 Concen: 143.65 ug/l  
 RT: 10.683 min Scan# 1574  
 Delta R.T. -0.000 min  
 Lab File: VX020738.D  
 Acq: 25 Jan 2021 20:30

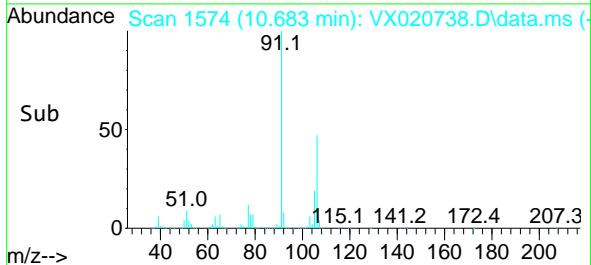
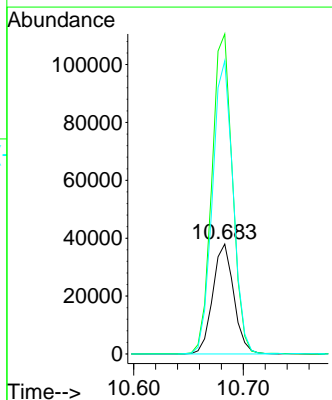
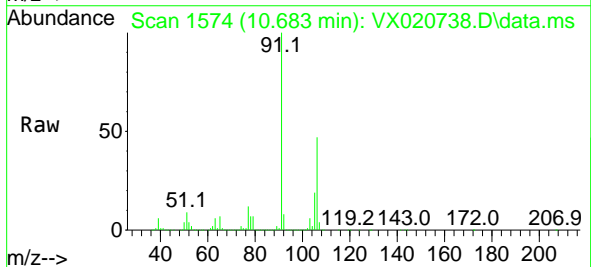
Instrument :  
 MSVOA\_X  
 ClientSampled :

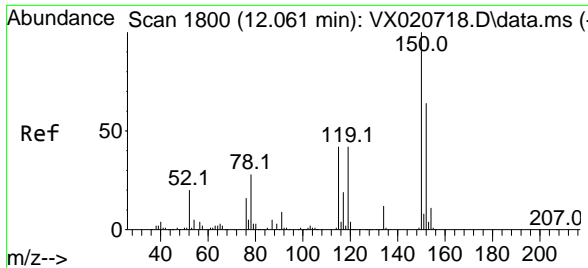
Tgt Ion:106 Resp: 984602  
 Ion Ratio Lower Upper  
 106 100  
 91 216.5 108.1 324.2



#70  
 Styrene  
 Concen: 4.31 ug/l  
 RT: 10.683 min Scan# 1574  
 Delta R.T. -0.012 min  
 Lab File: VX020738.D  
 Acq: 25 Jan 2021 20:30

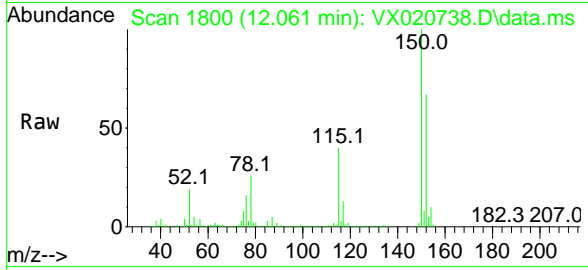
Tgt Ion:104 Resp: 50673  
 Ion Ratio Lower Upper  
 104 100  
 78 285.2 40.0 60.0#  
 103 262.0 43.4 65.0#



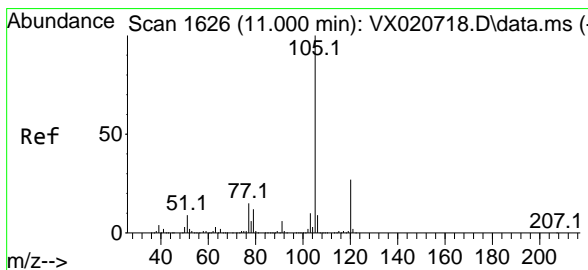
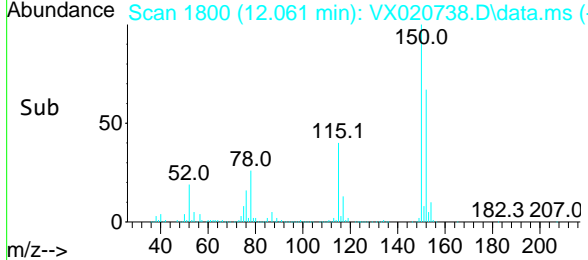
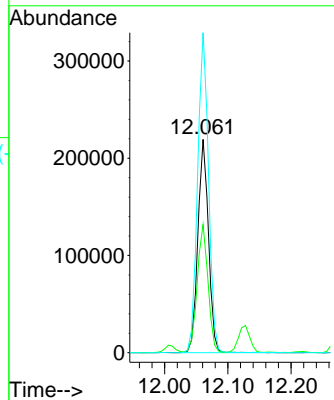


#72  
 1,4-Dichlorobenzene-d4  
 Concen: 50.00 ug/l  
 RT: 12.061 min Scan# 1800  
 Delta R.T. -0.000 min  
 Lab File: VX020738.D  
 Acq: 25 Jan 2021 20:30

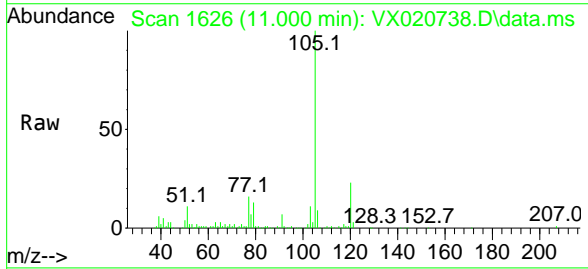
Instrument :  
 MSVOA\_X  
 ClientSampled :



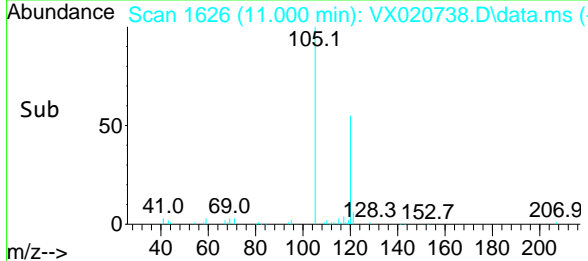
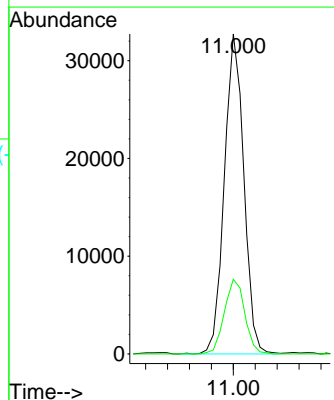
Tgt Ion:152 Resp: 256478  
 Ion Ratio Lower Upper  
 152 100  
 115 61.0 41.1 123.3  
 150 154.0 0.0 349.0

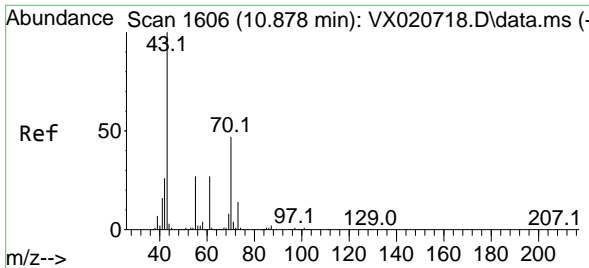


#73  
 Isopropylbenzene  
 Concen: 2.18 ug/l  
 RT: 11.000 min Scan# 1626  
 Delta R.T. 0.000 min  
 Lab File: VX020738.D  
 Acq: 25 Jan 2021 20:30



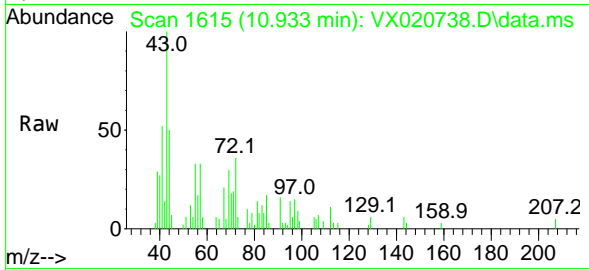
Tgt Ion:105 Resp: 40393  
 Ion Ratio Lower Upper  
 105 100  
 120 24.4 13.2 39.6





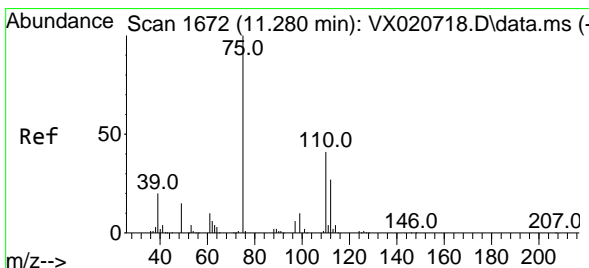
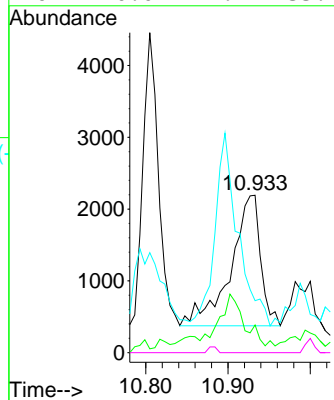
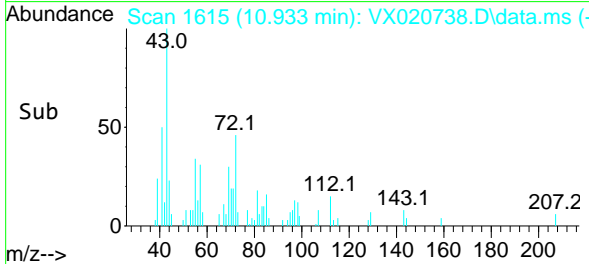
#74  
 N-amy1 acetate  
 Concen: 2.58 ug/l  
 RT: 10.933 min Scan# 1615  
 Delta R.T. 0.055 min  
 Lab File: VX020738.D  
 Acq: 25 Jan 2021 20:30

Instrument :  
 MSVOA\_X  
 ClientSampled :

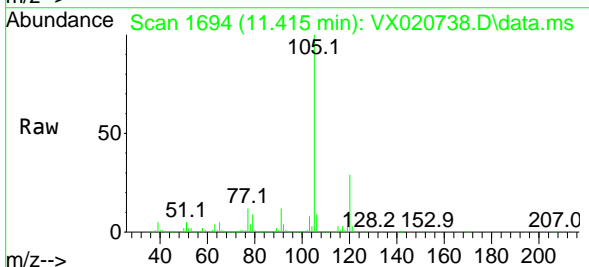


Tgt Ion: 43 Resp: 4609

Ion	Ratio	Lower	Upper
43	100		
70	0.0	39.0	58.6#
55	0.0	21.5	32.3#
61	0.0	22.1	33.1#

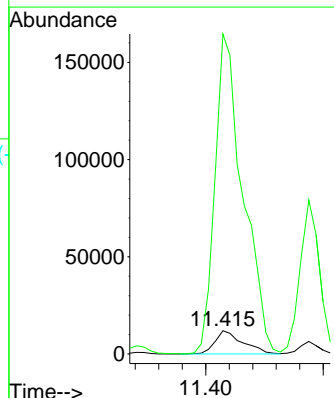
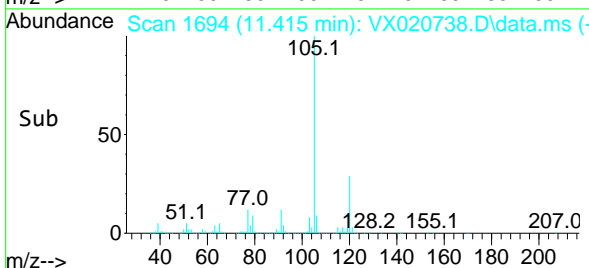


#76  
 1,2,3-Trichloropropane  
 Concen: 3.30 ug/l  
 RT: 11.415 min Scan# 1694  
 Delta R.T. 0.135 min  
 Lab File: VX020738.D  
 Acq: 25 Jan 2021 20:30

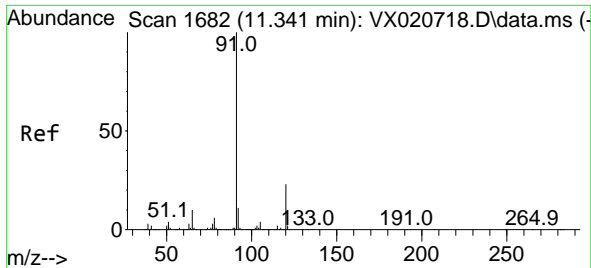


Tgt Ion: 75 Resp: 19636

Ion	Ratio	Lower	Upper
75	100		
77	1389.1	19.1	57.5#



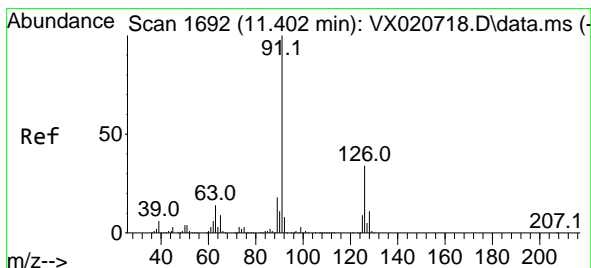
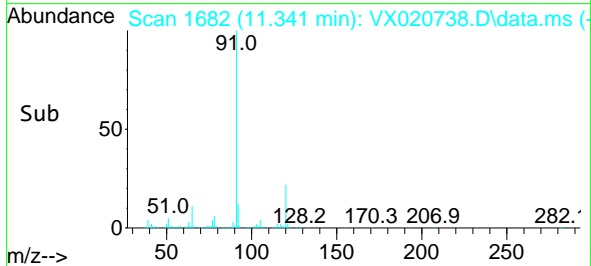
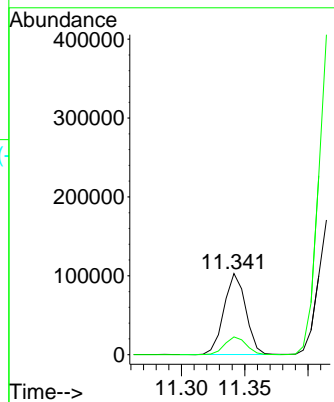
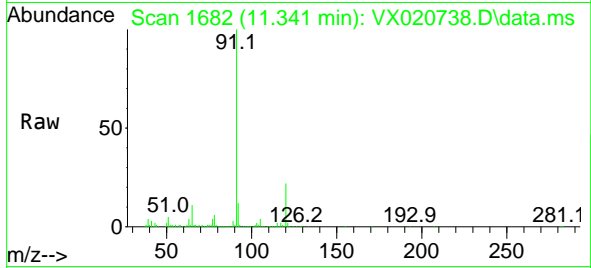




#78  
 n-propylbenzene  
 Concen: 5.73 ug/l  
 RT: 11.341 min Scan# 1682  
 Delta R.T. 0.000 min  
 Lab File: VX020738.D  
 Acq: 25 Jan 2021 20:30

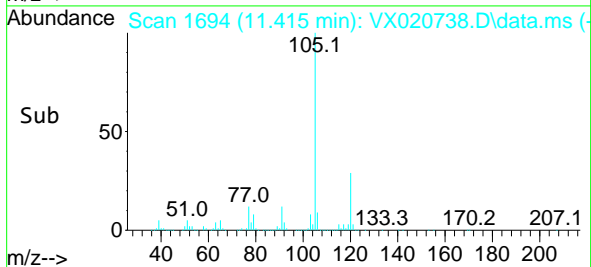
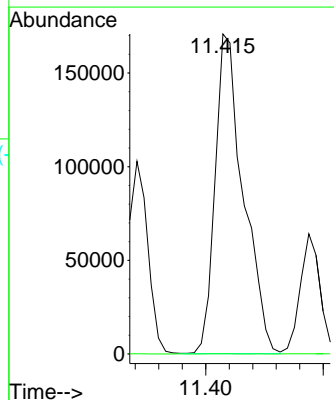
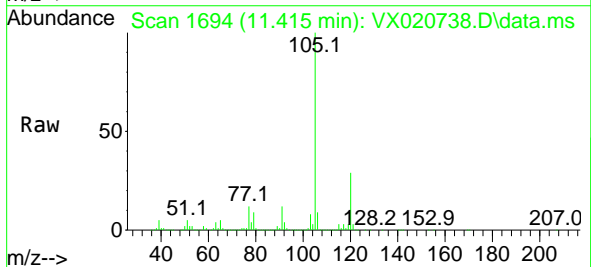
Instrument :  
 MSVOA\_X  
 ClientSampled :

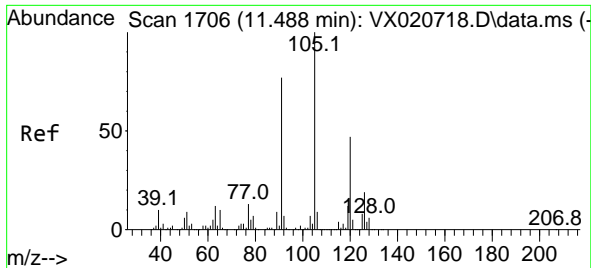
Tgt Ion: 91 Resp: 122650  
 Ion Ratio Lower Upper  
 91 100  
 120 22.0 11.5 34.5



#79  
 2-Chlorotoluene  
 Concen: 21.79 ug/l  
 RT: 11.415 min Scan# 1694  
 Delta R.T. 0.013 min  
 Lab File: VX020738.D  
 Acq: 25 Jan 2021 20:30

Tgt Ion: 91 Resp: 284902  
 Ion Ratio Lower Upper  
 91 100  
 126 0.0 16.6 49.8#

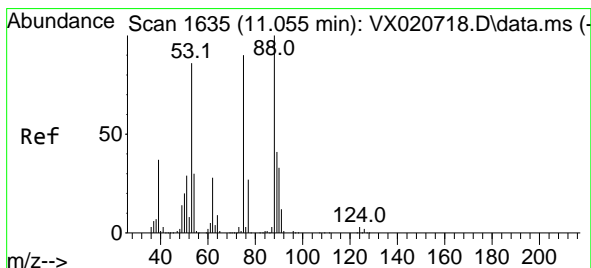
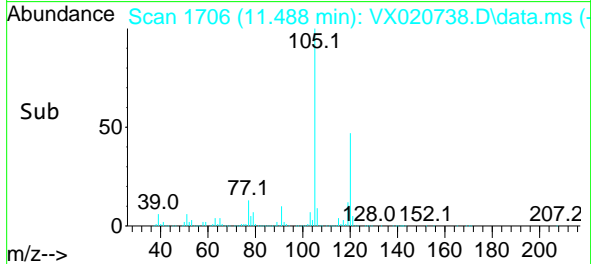
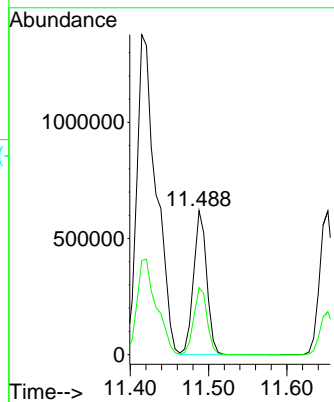
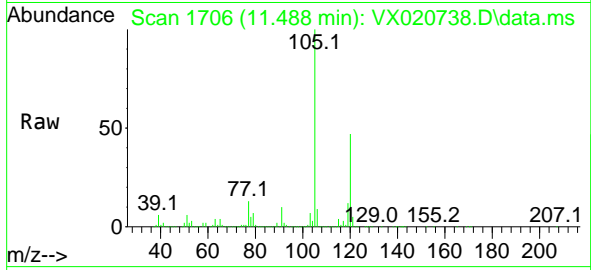




#80  
 1,3,5-Trimethylbenzene  
 Concen: 45.87 ug/l  
 RT: 11.488 min Scan# 1706  
 Delta R.T. -0.000 min  
 Lab File: VX020738.D  
 Acq: 25 Jan 2021 20:30

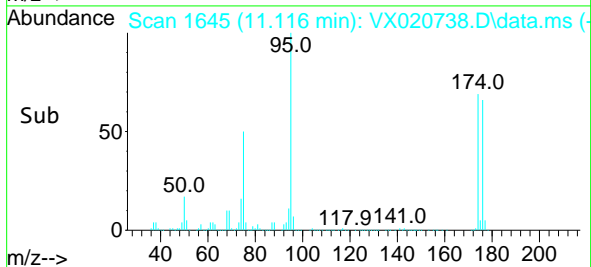
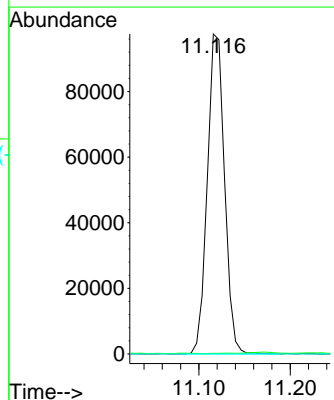
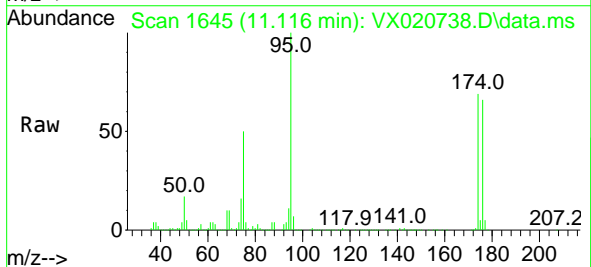
Instrument :  
 MSVOA\_X  
 ClientSampled :

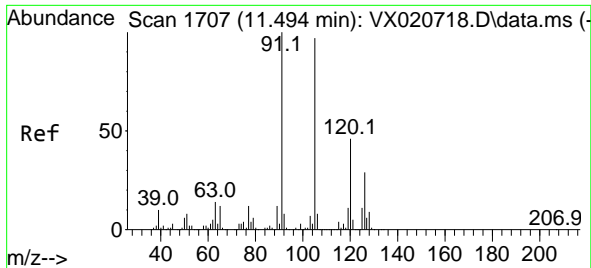
Tgt Ion:105 Resp: 726752  
 Ion Ratio Lower Upper  
 105 100  
 120 47.3 23.8 71.5



#81  
 trans-1,4-Dichloro-2-butene  
 Concen: 60.00 ug/l  
 RT: 11.116 min Scan# 1645  
 Delta R.T. 0.061 min  
 Lab File: VX020738.D  
 Acq: 25 Jan 2021 20:30

Tgt Ion: 75 Resp: 127358  
 Ion Ratio Lower Upper  
 75 100  
 53 0.0 74.5 111.7#  
 89 0.0 37.9 56.9#

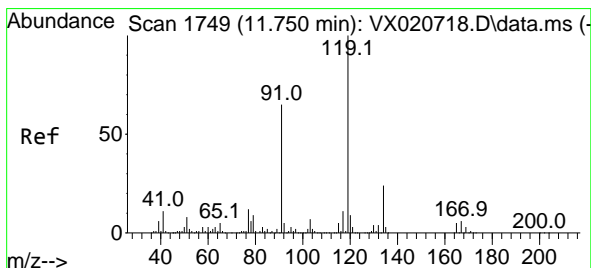
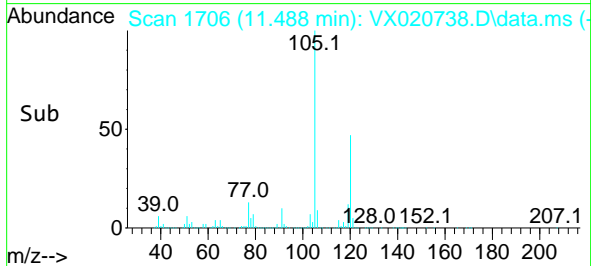
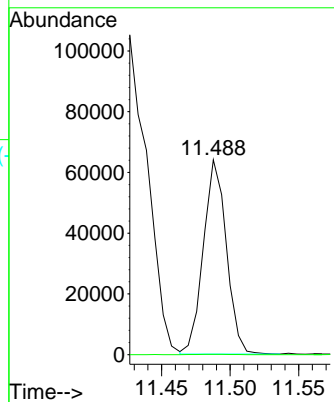
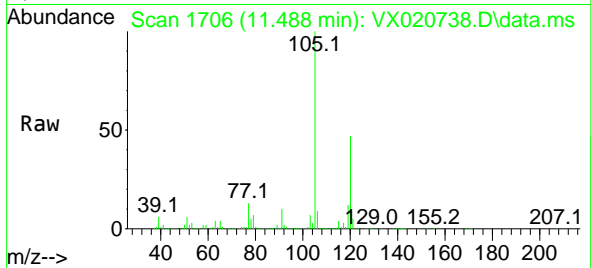




#82  
 4-Chlorotoluene  
 Concen: 4.84 ug/l  
 RT: 11.488 min Scan# 1706  
 Delta R.T. -0.006 min  
 Lab File: VX020738.D  
 Acq: 25 Jan 2021 20:30

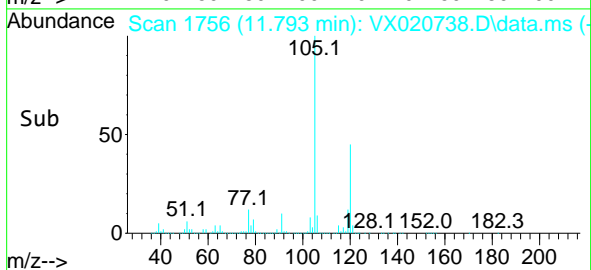
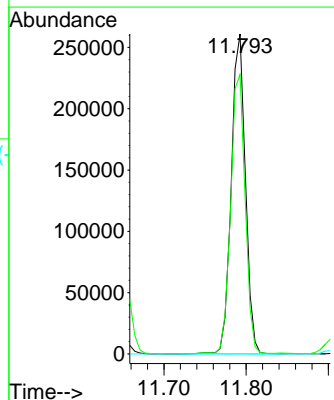
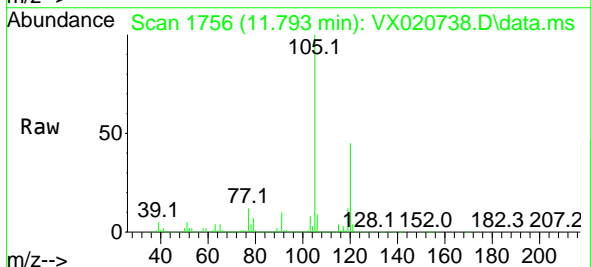
Instrument :  
 MSVOA\_X  
 ClientSampled :

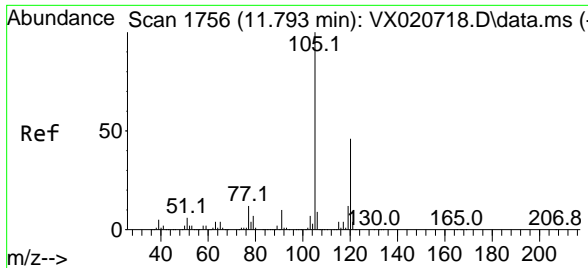
Tgt Ion: 91 Resp: 74817  
 Ion Ratio Lower Upper  
 91 100  
 126 0.3 14.9 44.5#



#83  
 tert-Butylbenzene  
 Concen: 20.46 ug/l  
 RT: 11.793 min Scan# 1756  
 Delta R.T. 0.043 min  
 Lab File: VX020738.D  
 Acq: 25 Jan 2021 20:30

Tgt Ion: 119 Resp: 313080  
 Ion Ratio Lower Upper  
 119 100  
 91 89.6 27.9 83.7#  
 134 0.0 11.3 33.9#

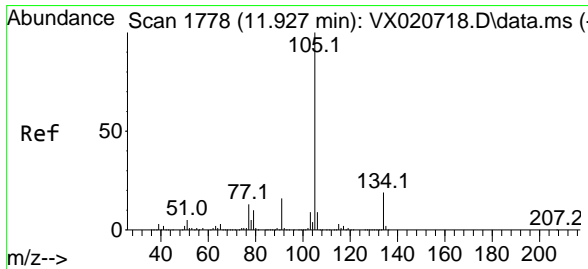
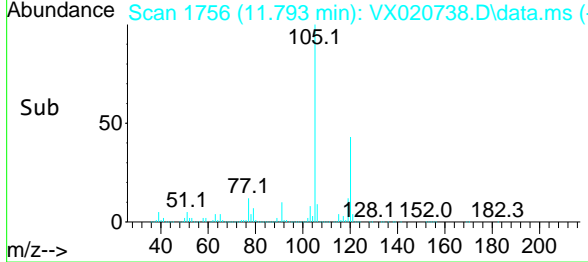
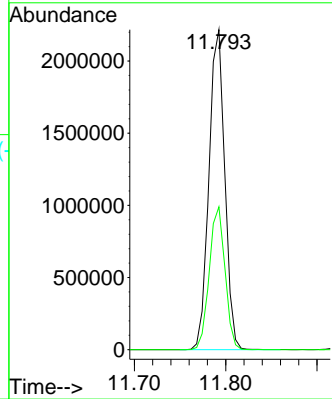
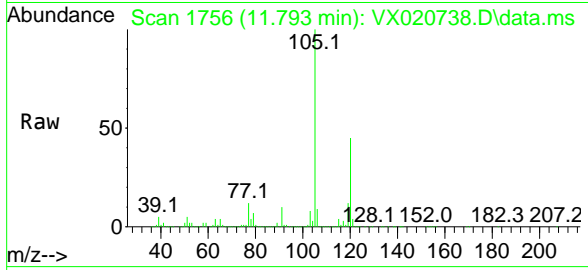




#84  
 1,2,4-Trimethylbenzene  
 Concen: 166.32 ug/l  
 RT: 11.793 min Scan# 1756  
 Delta R.T. -0.000 min  
 Lab File: VX020738.D  
 Acq: 25 Jan 2021 20:30

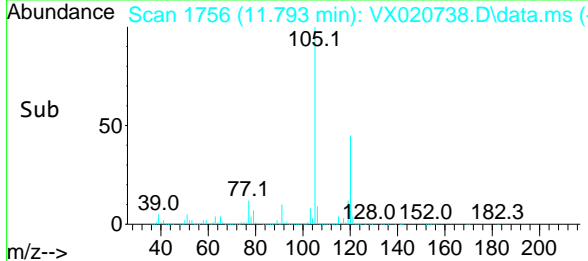
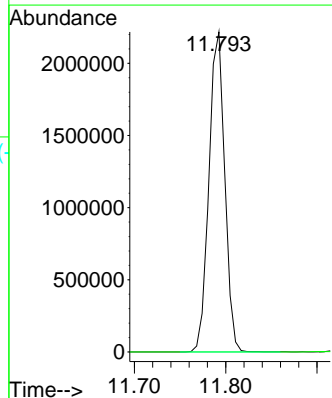
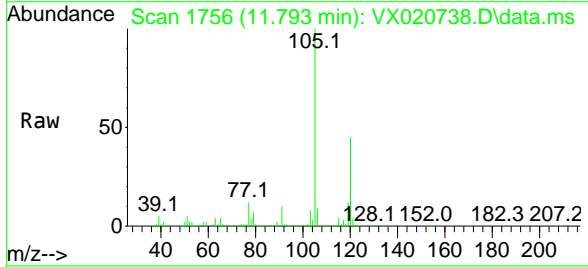
Instrument : MSVOA\_X  
 ClientSampled :

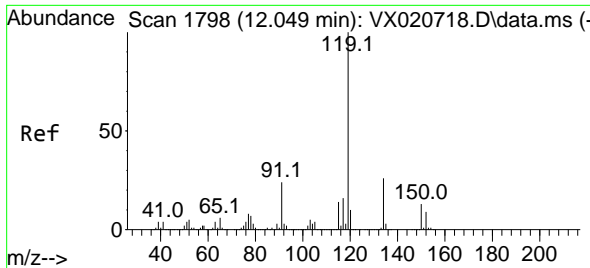
Tgt Ion:105 Resp: 2658019  
 Ion Ratio Lower Upper  
 105 100  
 120 44.4 22.4 67.3



#85  
 sec-Butylbenzene  
 Concen: 150.30 ug/l  
 RT: 11.793 min Scan# 1756  
 Delta R.T. -0.134 min  
 Lab File: VX020738.D  
 Acq: 25 Jan 2021 20:30

Tgt Ion:105 Resp: 2658019  
 Ion Ratio Lower Upper  
 105 100  
 134 0.0 10.0 29.8#



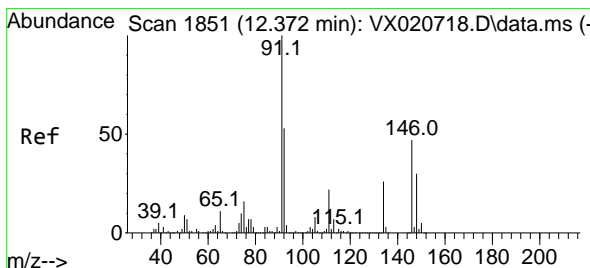
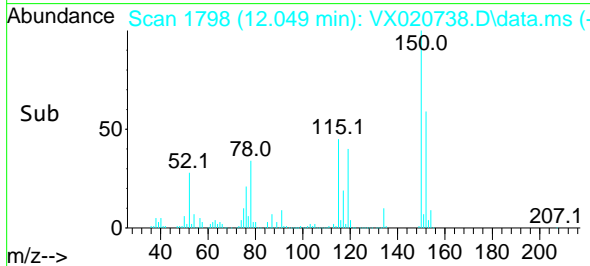
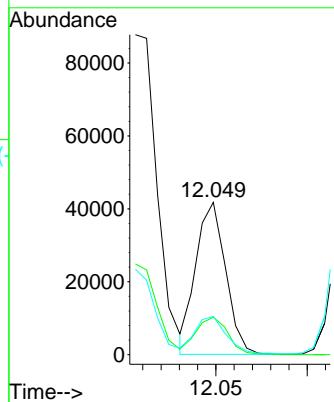
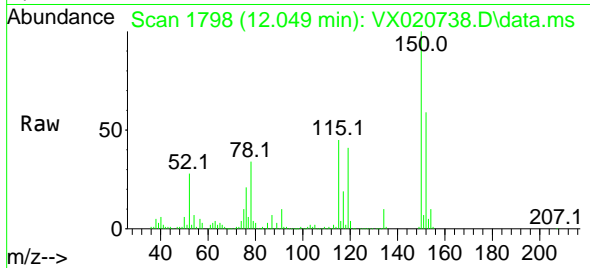


#86  
 p-Isopropyltoluene  
 Concen: 2.89 ug/l  
 RT: 12.049 min Scan# 1798  
 Delta R.T. -0.000 min  
 Lab File: VX020738.D  
 Acq: 25 Jan 2021 20:30

Instrument :  
 MSVOA\_X  
 ClientSampled :

Tgt Ion:119 Resp: 47460

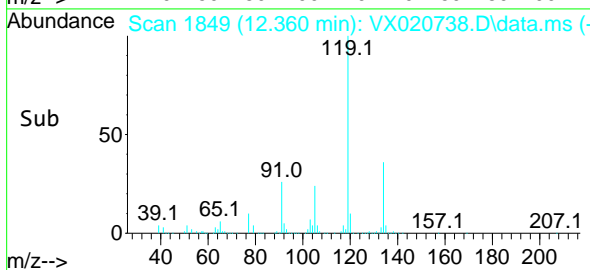
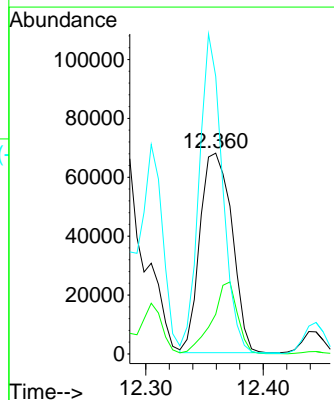
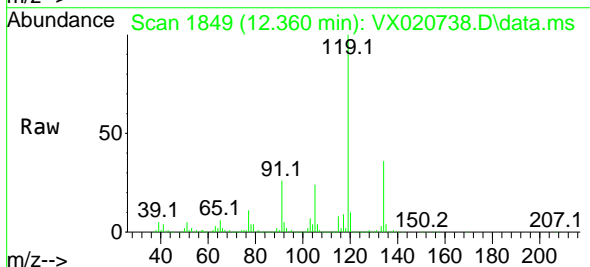
Ion	Ratio	Lower	Upper
119	100		
134	26.6	12.9	38.7
91	25.7	11.7	35.0

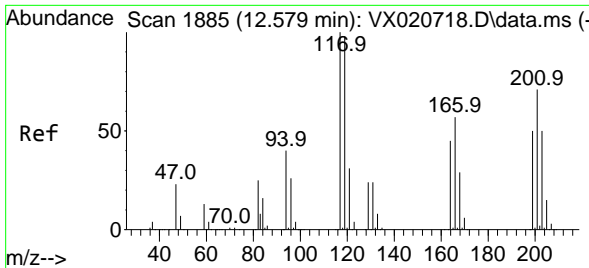


#89  
 n-Butylbenzene  
 Concen: 8.74 ug/l  
 RT: 12.360 min Scan# 1849  
 Delta R.T. -0.012 min  
 Lab File: VX020738.D  
 Acq: 25 Jan 2021 20:30

Tgt Ion: 91 Resp: 128451

Ion	Ratio	Lower	Upper
91	100		
92	28.3	27.4	82.0
134	116.7	13.2	39.5#

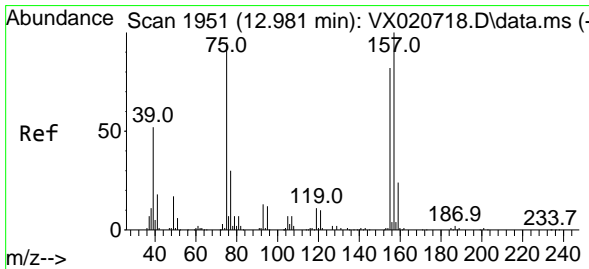
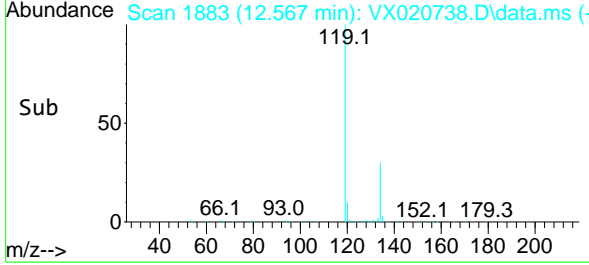
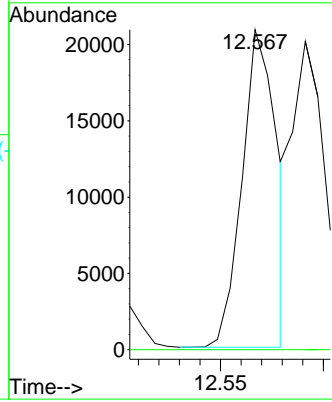
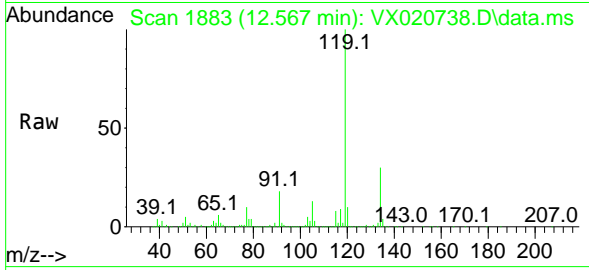




#90  
 Hexachloroethane  
 Concen: 8.22 ug/l  
 RT: 12.567 min Scan# 1883  
 Delta R.T. -0.012 min  
 Lab File: VX020738.D  
 Acq: 25 Jan 2021 20:30

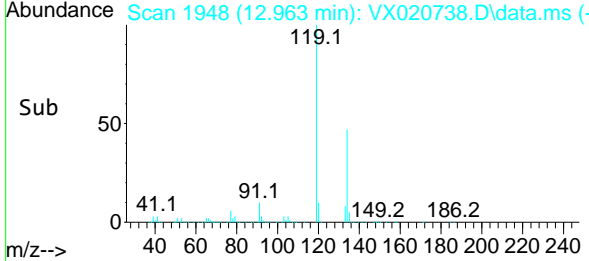
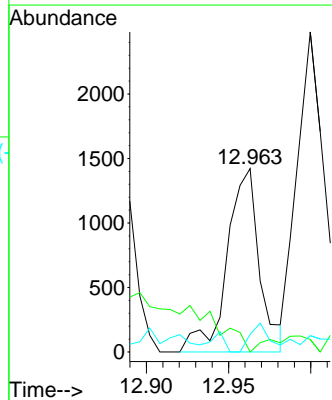
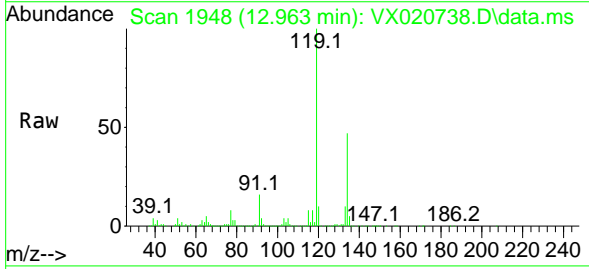
Instrument :  
 MSVOA\_X  
 ClientSampled :

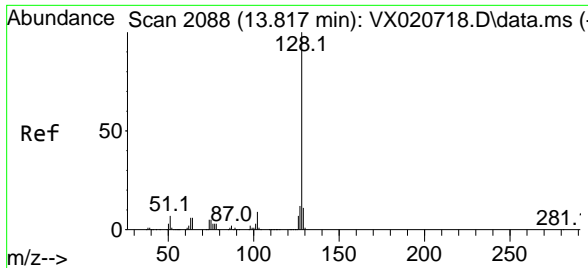
Tgt Ion:117 Resp: 24300  
 Ion Ratio Lower Upper  
 117 100  
 201 0.0 40.4 121.2#



#92  
 1,2-Dibromo-3-Chloropropane  
 Concen: 1.41 ug/l  
 RT: 12.963 min Scan# 1948  
 Delta R.T. -0.018 min  
 Lab File: VX020738.D  
 Acq: 25 Jan 2021 20:30

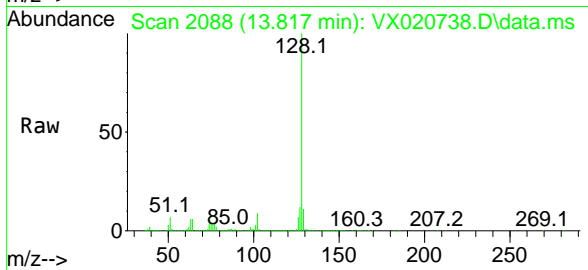
Tgt Ion: 75 Resp: 1954  
 Ion Ratio Lower Upper  
 75 100  
 155 0.0 45.3 135.9#  
 157 9.4 57.7 173.1#





#95  
 Naphthalene  
 Concen: 31.93 ug/l  
 RT: 13.817 min Scan# 2088  
 Delta R.T. -0.000 min  
 Lab File: VX020738.D  
 Acq: 25 Jan 2021 20:30

Instrument :  
 MSVOA\_X  
 ClientSampled :



Tgt Ion:128 Resp: 606520

Ion	Ratio	Lower	Upper
128	100		
127	12.6	10.3	15.5
129	11.0	8.8	13.2

