

Data Path : Z:\voasrv\HPCHEM1\MSVOA\_X\Data\VX012621\  
 Data File : VX020753.D  
 Acq On : 26 Jan 2021 15:07  
 Operator : JC/SP  
 Sample : M1189-14  
 Misc : 5.0mL/MSVOA\_X/WATER  
 ALS Vial : 14 Sample Multiplier: 1

Instrument :  
 MSVOA\_X  
 ClientSampled :  
 41090

Quant Time: Jan 27 00:55:36 2021  
 Quant Method : Z:\VOASRV\HPCHEM1\MSVOA\_X\METHOD\82X012521W.M  
 Quant Title : SW846 8260  
 QLast Update : Mon Jan 25 13:38:15 2021  
 Response via : Initial Calibration

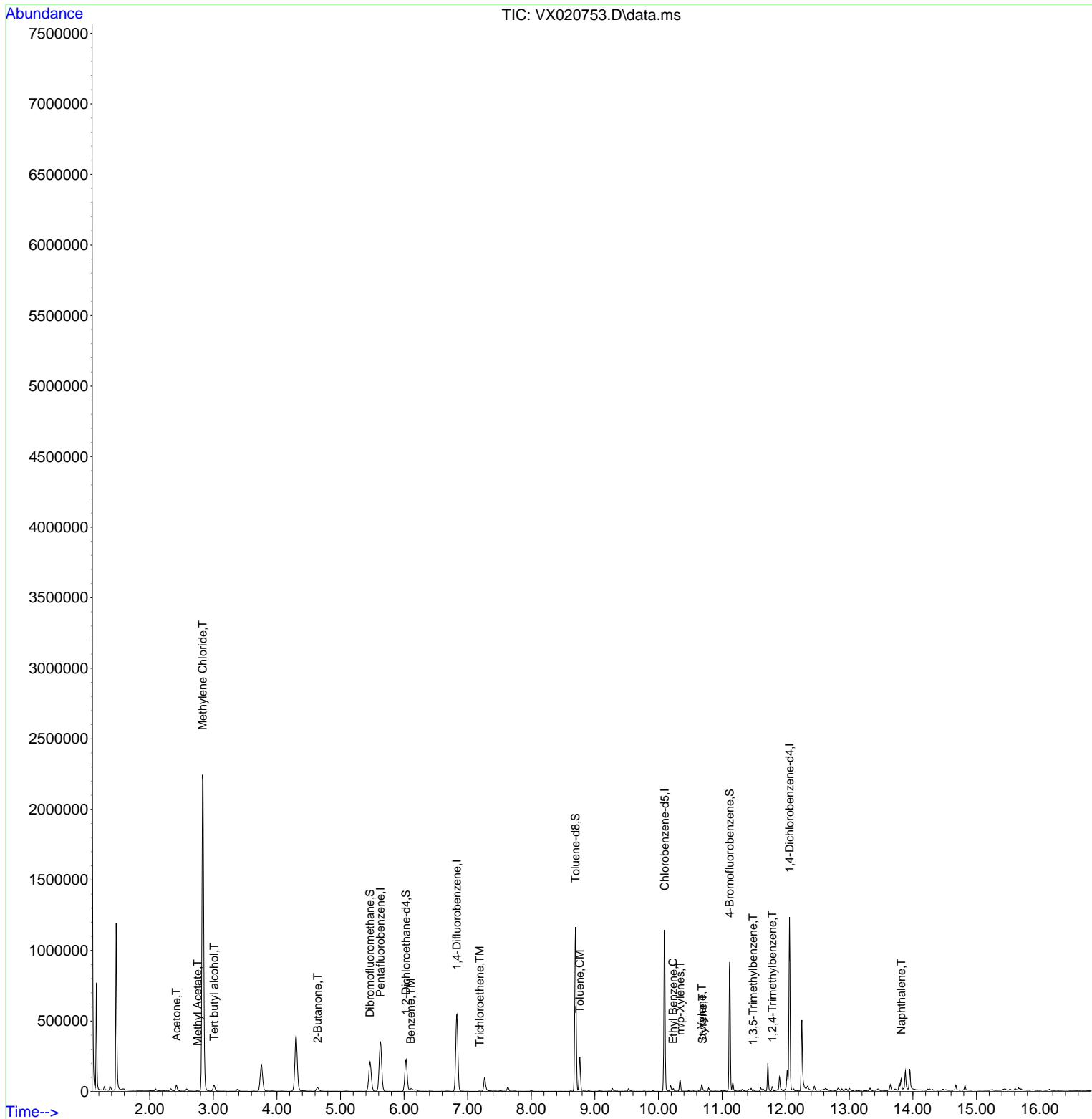
Compound	R.T.	QIon	Response	Conc	Units	Dev(Min)
-----						
Internal Standards						
1) Pentafluorobenzene	5.629	168	332847	50.00	ug/l	0.00
34) 1,4-Difluorobenzene	6.830	114	562156	50.00	ug/l	0.00
63) Chlorobenzene-d5	10.098	117	537744	50.00	ug/l	0.00
72) 1,4-Dichlorobenzene-d4	12.061	152	248444	50.00	ug/l	0.00
System Monitoring Compounds						
33) 1,2-Dichloroethane-d4	6.031	65	214591	47.27	ug/l	0.00
Spiked Amount	50.000	Range 61 - 141	Recovery =	94.54%		
35) Dibromofluoromethane	5.464	113	182042	47.28	ug/l	0.00
Spiked Amount	50.000	Range 69 - 133	Recovery =	94.56%		
50) Toluene-d8	8.695	98	693811	49.15	ug/l	0.00
Spiked Amount	50.000	Range 65 - 126	Recovery =	98.30%		
62) 4-Bromofluorobenzene	11.122	95	261902	47.77	ug/l	0.00
Spiked Amount	50.000	Range 58 - 135	Recovery =	95.54%		
Target Compounds						
						Qvalue
11) Tert butyl alcohol	3.014	59	15732	18.56	ug/l	95
16) Acetone	2.416	43	45054	26.17	ug/l	99
18) Methyl Acetate	2.751	43	7437	1.69	ug/l	92
20) Methylene Chloride	2.831	84	1110926	255.74	ug/l	97
25) 2-Butanone	4.641	43	42615	15.81	ug/l	98
40) Benzene	6.104	78	21027	1.27	ug/l	95
44) Trichloroethene	7.190	130	904	0.20	ug/l	89
52) Toluene	8.762	92	88833	8.50	ug/l	99
67) Ethyl Benzene	10.232	91	9692	0.48	ug/l	93
68) m/p-Xylenes	10.341	106	18603	2.47	ug/l	94
69) o-Xylene	10.683	106	9498	1.34	ug/l	98
70) Styrene	10.695	104	3338	0.27	ug/l #	69
80) 1,3,5-Trimethylbenzene	11.488	105	4233	0.28	ug/l	100
84) 1,2,4-Trimethylbenzene	11.792	105	12676	0.82	ug/l	98
95) Naphthalene	13.816	128	47640	5.23	ug/l	98
-----						

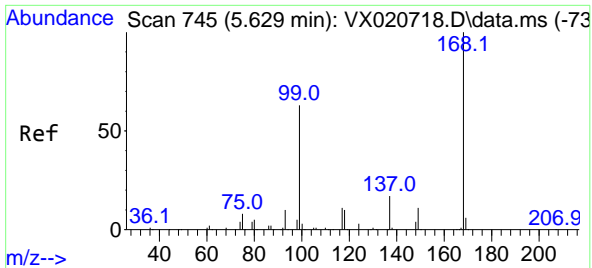
(#) = qualifier out of range (m) = manual integration (+) = signals summed

Data Path : Z:\voasrv\HPCHEM1\MSVOA\_X\Data\VX012621\  
 Data File : VX020753.D  
 Acq On : 26 Jan 2021 15:07  
 Operator : JC/SP  
 Sample : M1189-14  
 Misc : 5.0mL/MSVOA\_X/WATER  
 ALS Vial : 14 Sample Multiplier: 1

Instrument :  
 MSVOA\_X  
 ClientSampleId :  
 41090

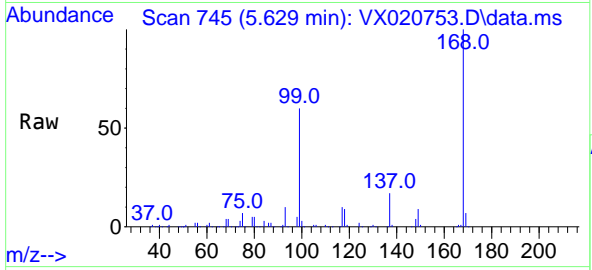
Quant Time: Jan 27 00:55:36 2021  
 Quant Method : Z:\VOASRV\HPCHEM1\MSVOA\_X\METHOD\82X012521W.M  
 Quant Title : SW846 8260  
 QLast Update : Mon Jan 25 13:38:15 2021  
 Response via : Initial Calibration



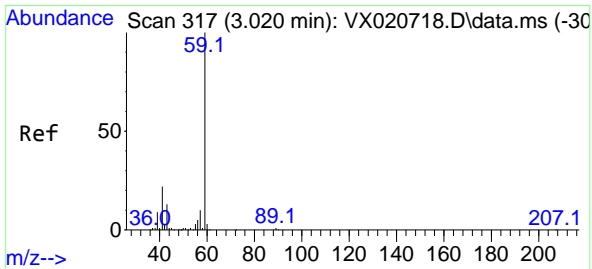
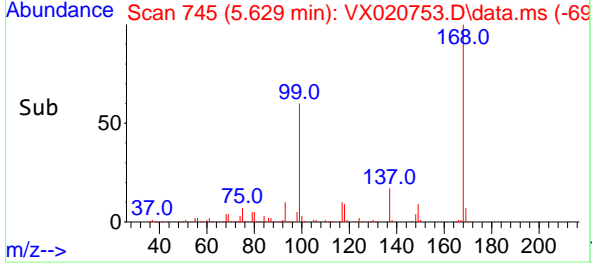
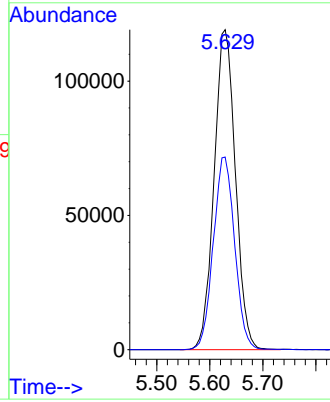


#1  
 Pentafluorobenzene  
 Concen: 50.00 ug/l  
 RT: 5.629 min Scan# 745  
 Delta R.T. -0.000 min  
 Lab File: VX020753.D  
 Acq: 26 Jan 2021 15:07

Instrument :  
 MSVOA\_X  
 ClientSampled :  
 41090

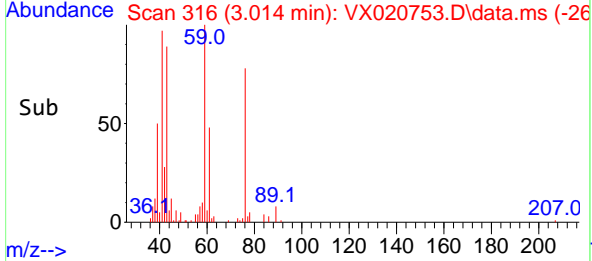
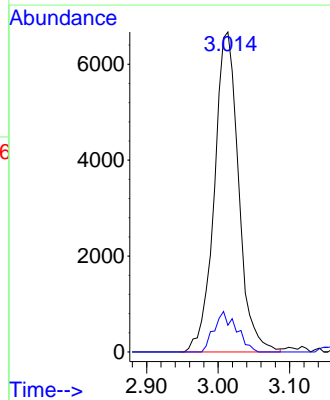
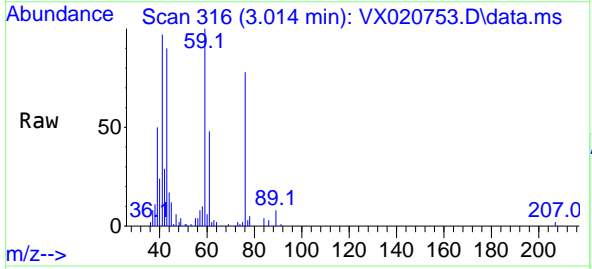


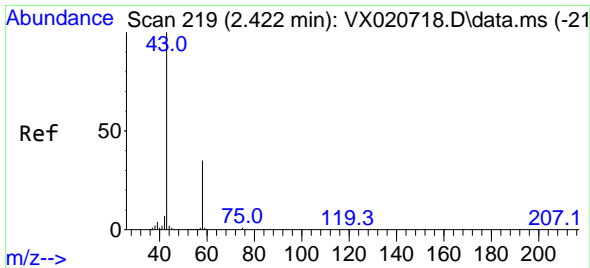
Tgt Ion:168 Resp: 332847  
 Ion Ratio Lower Upper  
 168 100  
 99 60.2 45.8 68.6



#11  
 Tert butyl alcohol  
 Concen: 18.56 ug/l  
 RT: 3.014 min Scan# 316  
 Delta R.T. -0.006 min  
 Lab File: VX020753.D  
 Acq: 26 Jan 2021 15:07

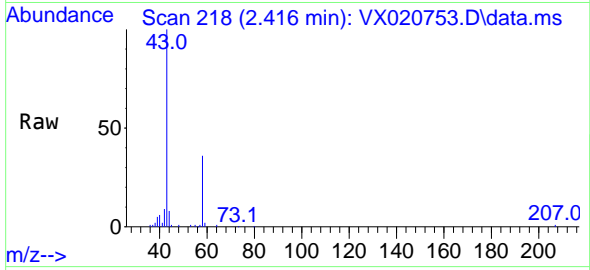
Tgt Ion: 59 Resp: 15732  
 Ion Ratio Lower Upper  
 59 100  
 57 11.6 7.8 11.8



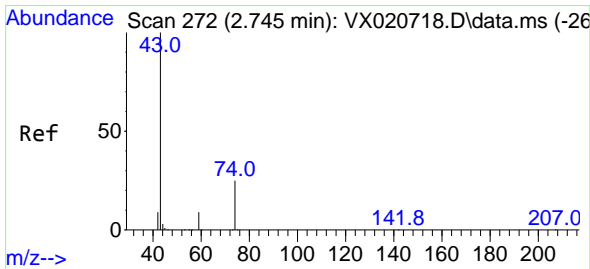
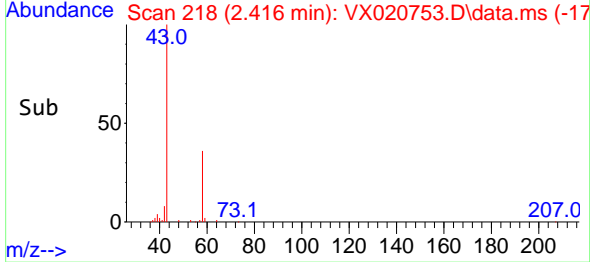
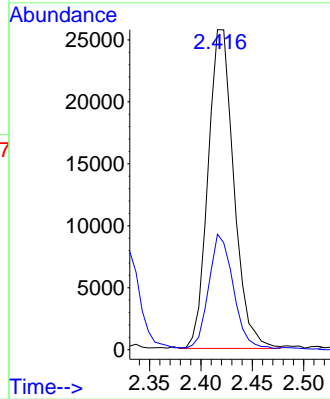


#16  
 Acetone  
 Concen: 26.17 ug/l  
 RT: 2.416 min Scan# 218  
 Delta R.T. -0.006 min  
 Lab File: VX020753.D  
 Acq: 26 Jan 2021 15:07

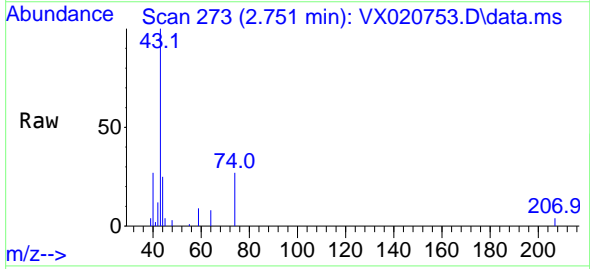
Instrument :  
 MSVOA\_X  
 ClientSampled :  
 41090



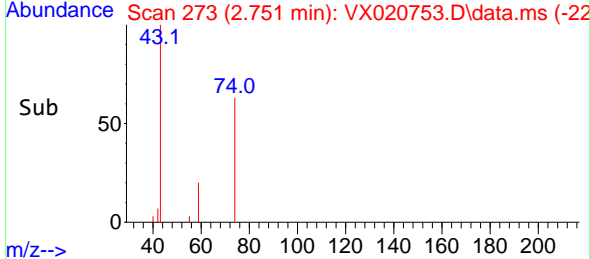
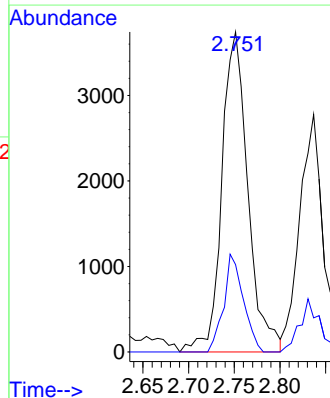
Tgt Ion: 43 Resp: 45054  
 Ion Ratio Lower Upper  
 43 100  
 58 35.6 27.8 41.8

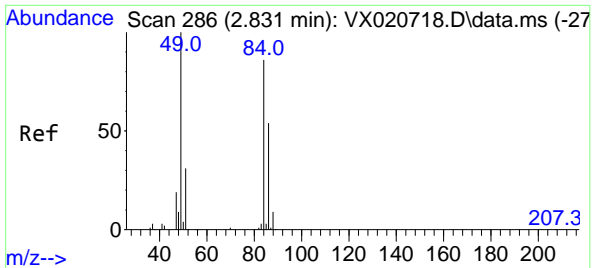


#18  
 Methyl Acetate  
 Concen: 1.69 ug/l  
 RT: 2.751 min Scan# 273  
 Delta R.T. 0.006 min  
 Lab File: VX020753.D  
 Acq: 26 Jan 2021 15:07



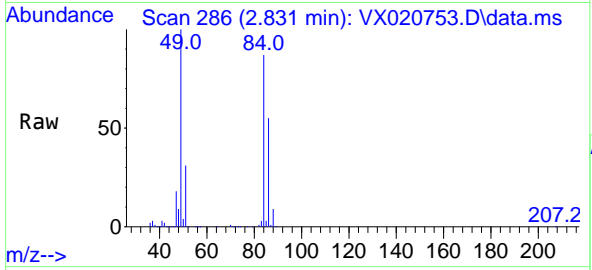
Tgt Ion: 43 Resp: 7437  
 Ion Ratio Lower Upper  
 43 100  
 74 23.0 21.9 32.9





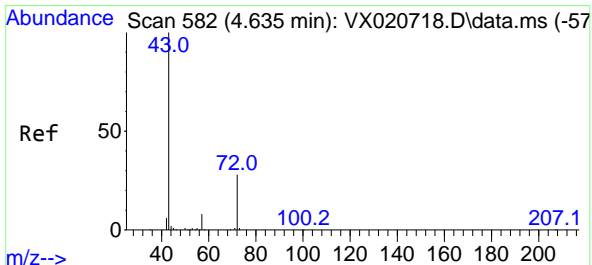
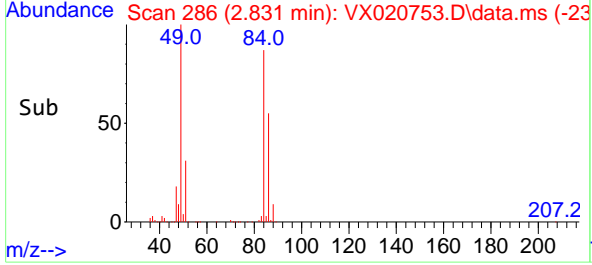
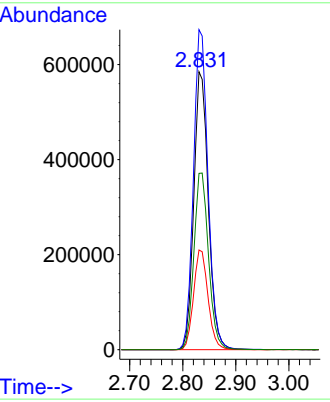
#20  
 Methylene Chloride  
 Concen: 255.74 ug/l  
 RT: 2.831 min Scan# 286  
 Delta R.T. -0.000 min  
 Lab File: VX020753.D  
 Acq: 26 Jan 2021 15:07

Instrument :  
 MSVOA\_X  
 ClientSampled :  
 41090

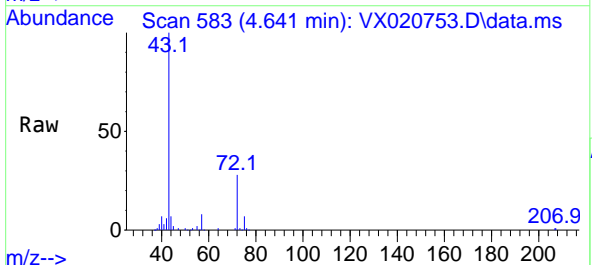


Tgt Ion: 84 Resp: 1110926

Ion	Ratio	Lower	Upper
84	100		
49	115.1	88.6	132.8
51	35.9	27.0	40.6
86	63.4	50.3	75.5

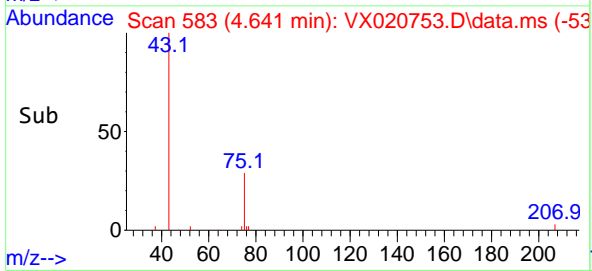
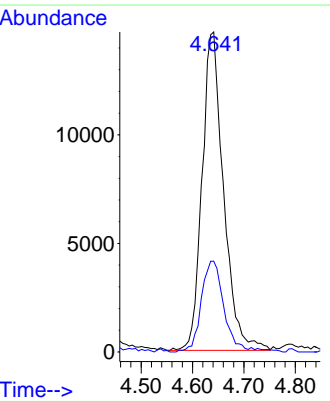


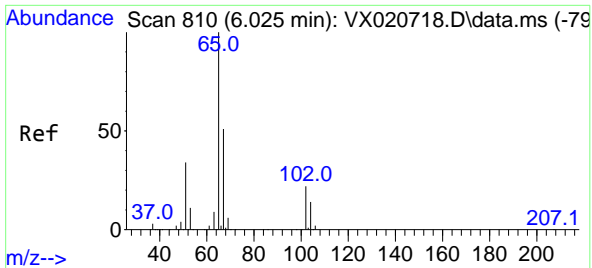
#25  
 2-Butanone  
 Concen: 15.81 ug/l  
 RT: 4.641 min Scan# 583  
 Delta R.T. 0.006 min  
 Lab File: VX020753.D  
 Acq: 26 Jan 2021 15:07



Tgt Ion: 43 Resp: 42615

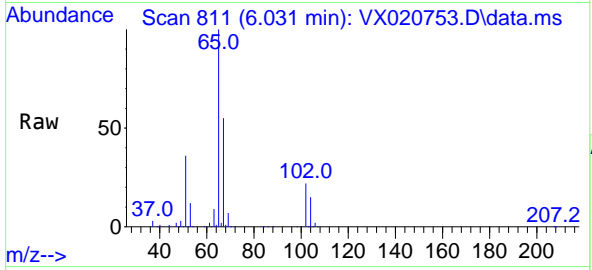
Ion	Ratio	Lower	Upper
43	100		
72	28.5	23.7	35.5



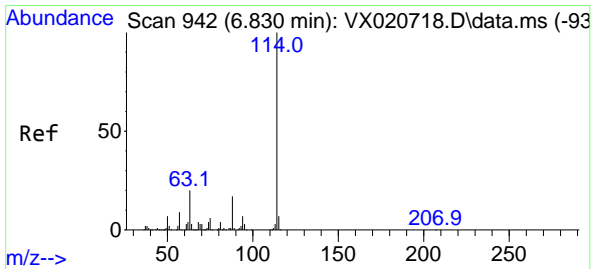
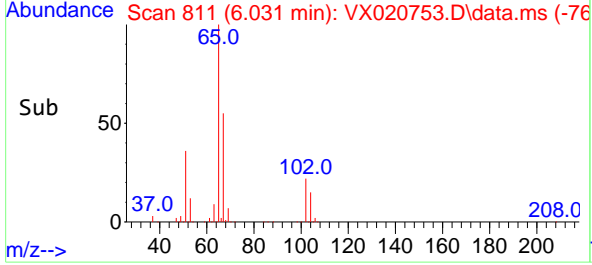
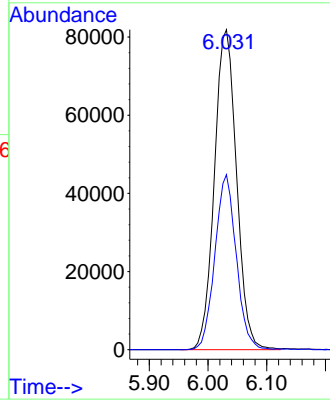


#33  
 1,2-Dichloroethane-d4  
 Concen: 47.27 ug/l  
 RT: 6.031 min Scan# 811  
 Delta R.T. 0.006 min  
 Lab File: VX020753.D  
 Acq: 26 Jan 2021 15:07

Instrument :  
 MSVOA\_X  
 ClientSampled :  
 41090

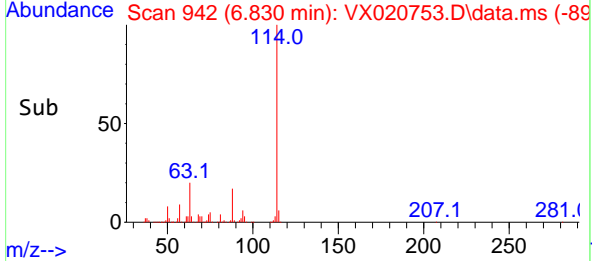
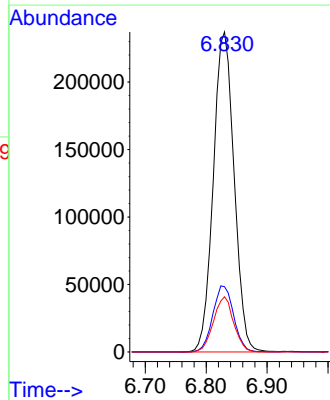
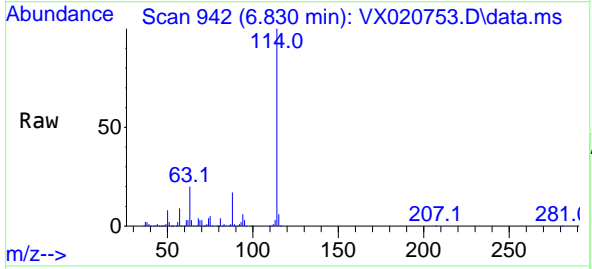


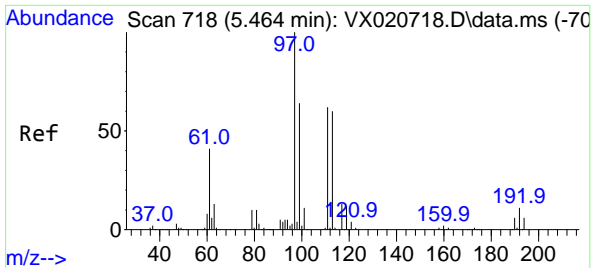
Tgt Ion: 65 Resp: 214591  
 Ion Ratio Lower Upper  
 65 100  
 67 52.5 0.0 105.4



#34  
 1,4-Difluorobenzene  
 Concen: 50.00 ug/l  
 RT: 6.830 min Scan# 942  
 Delta R.T. -0.000 min  
 Lab File: VX020753.D  
 Acq: 26 Jan 2021 15:07

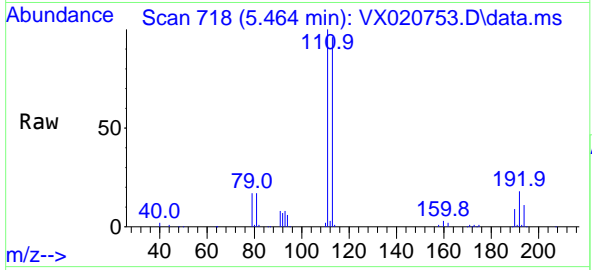
Tgt Ion: 114 Resp: 562156  
 Ion Ratio Lower Upper  
 114 100  
 63 20.4 0.0 40.8  
 88 17.2 0.0 32.8



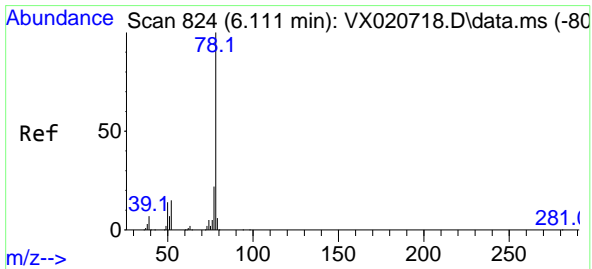
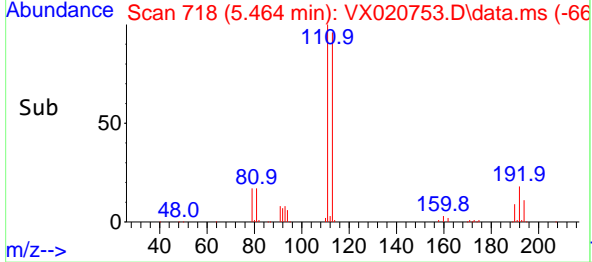
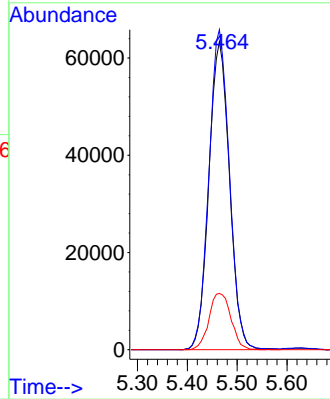


#35  
 Dibromofluoromethane  
 Concen: 47.28 ug/l  
 RT: 5.464 min Scan# 718  
 Delta R.T. 0.000 min  
 Lab File: VX020753.D  
 Acq: 26 Jan 2021 15:07

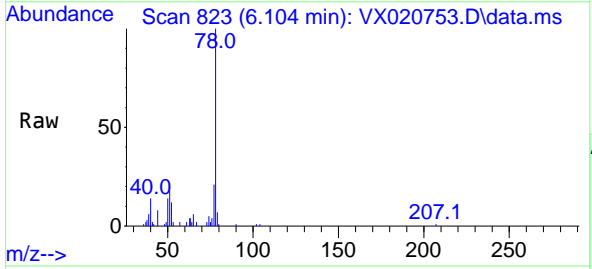
Instrument :  
 MSVOA\_X  
 ClientSampled :  
 41090



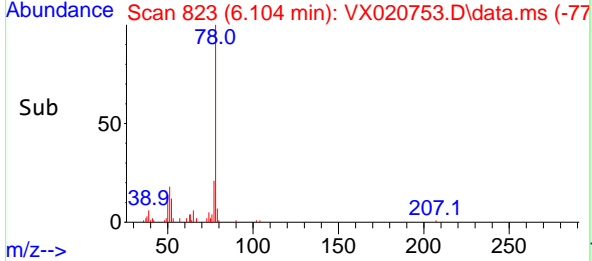
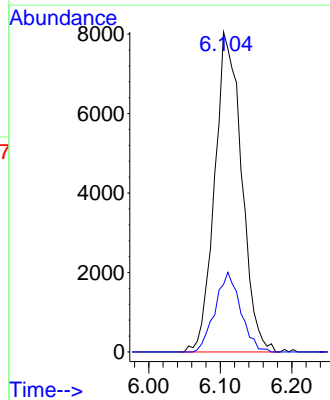
Tgt Ion:113 Resp: 182042  
 Ion Ratio Lower Upper  
 113 100  
 111 103.5 81.9 122.9  
 192 19.5 16.7 25.1

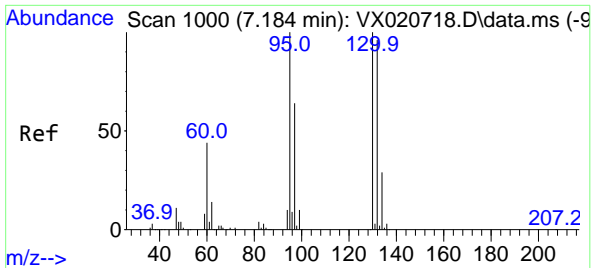


#40  
 Benzene  
 Concen: 1.27 ug/l  
 RT: 6.104 min Scan# 823  
 Delta R.T. -0.007 min  
 Lab File: VX020753.D  
 Acq: 26 Jan 2021 15:07



Tgt Ion: 78 Resp: 21027  
 Ion Ratio Lower Upper  
 78 100  
 77 21.1 18.9 28.3

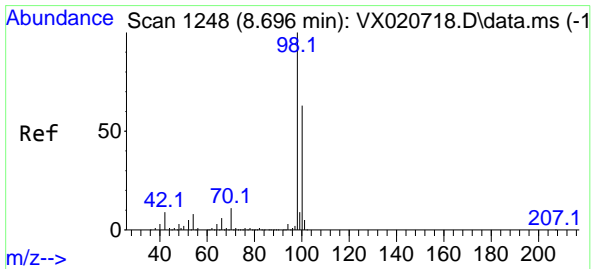
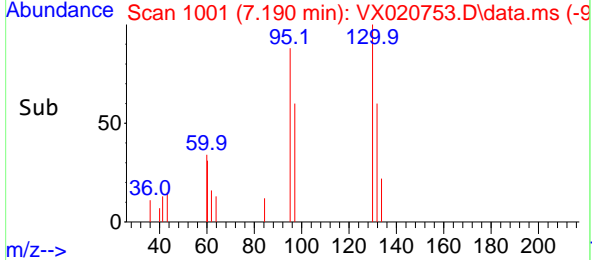
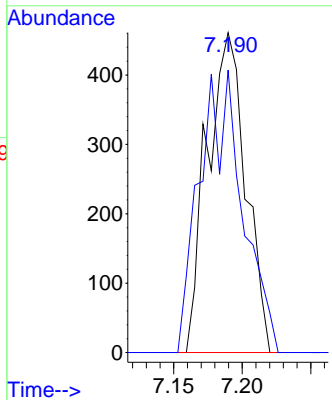
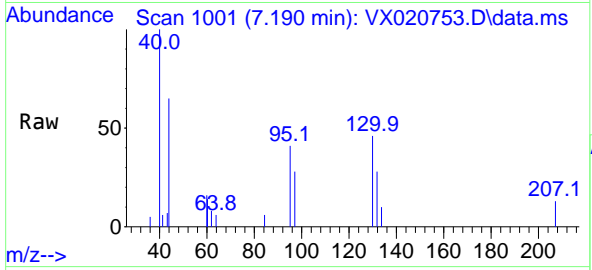




#44  
 Trichloroethene  
 Concen: 0.20 ug/l  
 RT: 7.190 min Scan# 1001  
 Delta R.T. 0.006 min  
 Lab File: VX020753.D  
 Acq: 26 Jan 2021 15:07

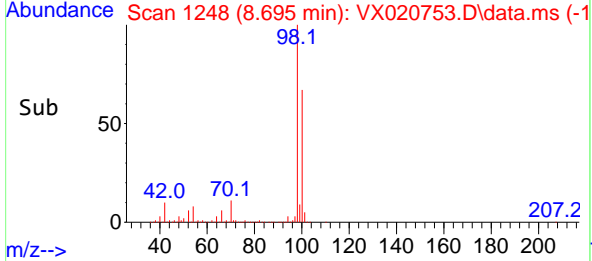
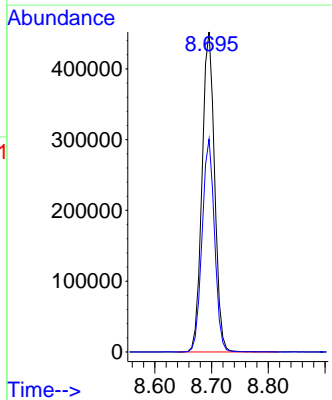
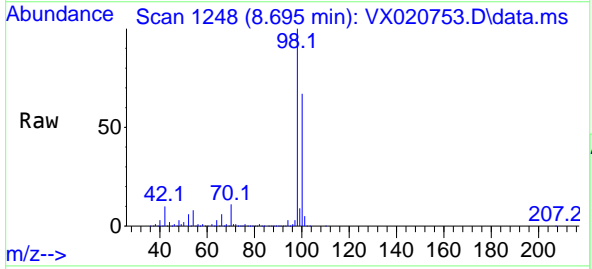
Instrument :  
 MSVOA\_X  
 ClientSampled :  
 41090

Tgt Ion:130 Resp: 904  
 Ion Ratio Lower Upper  
 130 100  
 95 88.3 0.0 198.0

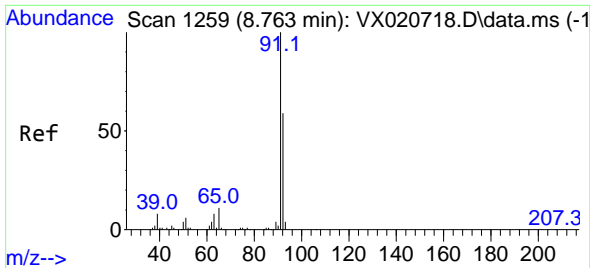


#50  
 Toluene-d8  
 Concen: 49.15 ug/l  
 RT: 8.695 min Scan# 1248  
 Delta R.T. -0.001 min  
 Lab File: VX020753.D  
 Acq: 26 Jan 2021 15:07

Tgt Ion: 98 Resp: 693811  
 Ion Ratio Lower Upper  
 98 100  
 100 66.0 51.9 77.9



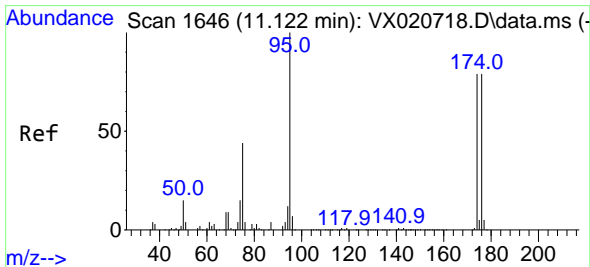
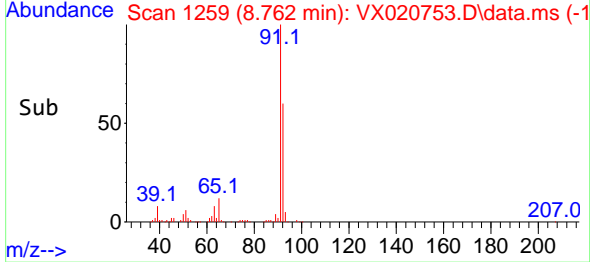
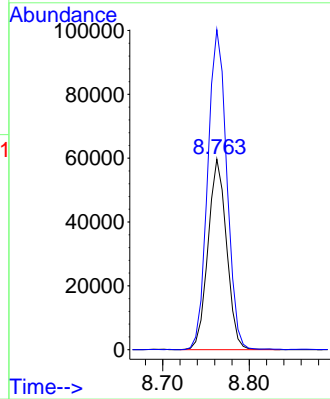
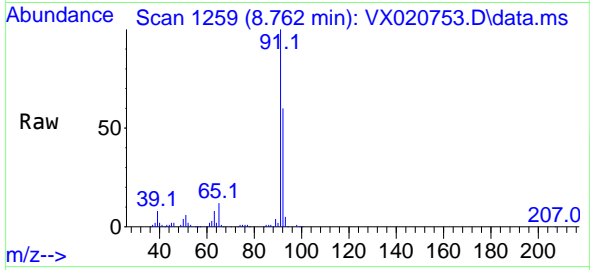




#52  
 Toluene  
 Concen: 8.50 ug/l  
 RT: 8.762 min Scan# 1259  
 Delta R.T. -0.001 min  
 Lab File: VX020753.D  
 Acq: 26 Jan 2021 15:07

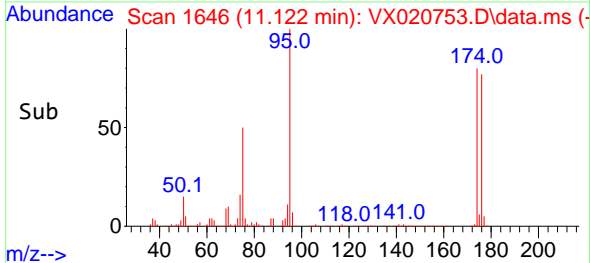
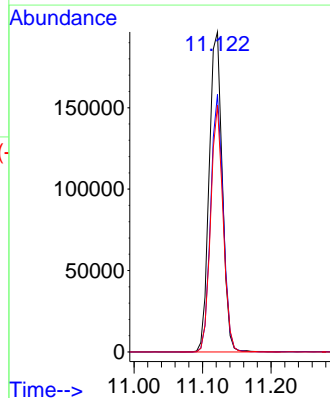
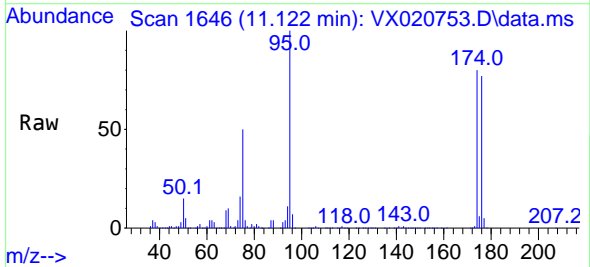
Instrument :  
 MSVOA\_X  
 ClientSampled :  
 41090

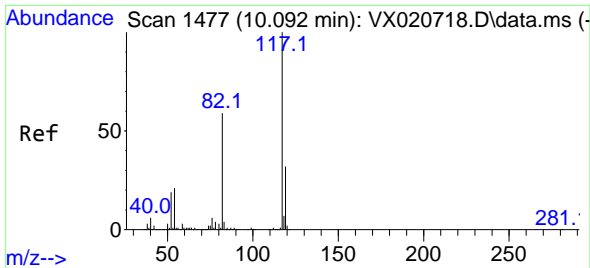
Tgt Ion: 92 Resp: 88833  
 Ion Ratio Lower Upper  
 92 100  
 91 172.7 137.1 205.7



#62  
 4-Bromofluorobenzene  
 Concen: 47.77 ug/l  
 RT: 11.122 min Scan# 1646  
 Delta R.T. -0.000 min  
 Lab File: VX020753.D  
 Acq: 26 Jan 2021 15:07

Tgt Ion: 95 Resp: 261902  
 Ion Ratio Lower Upper  
 95 100  
 174 77.1 0.0 154.6  
 176 73.1 0.0 155.8



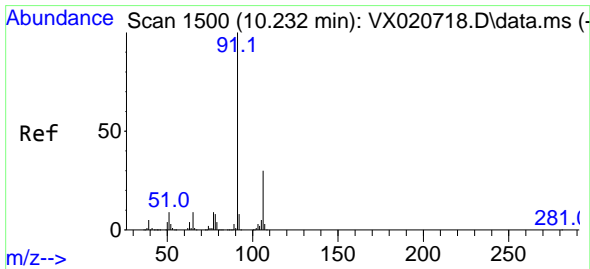
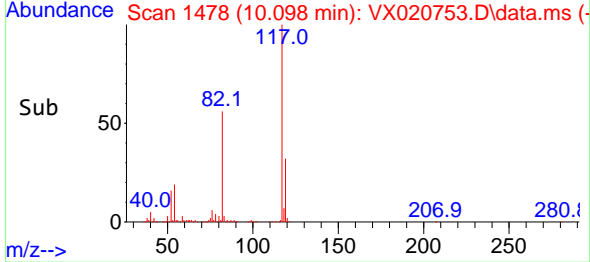
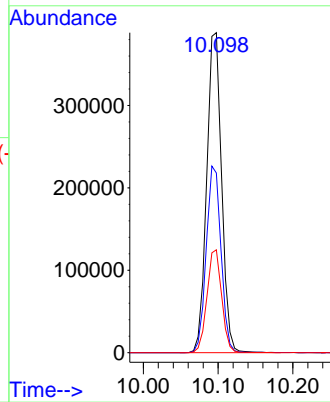
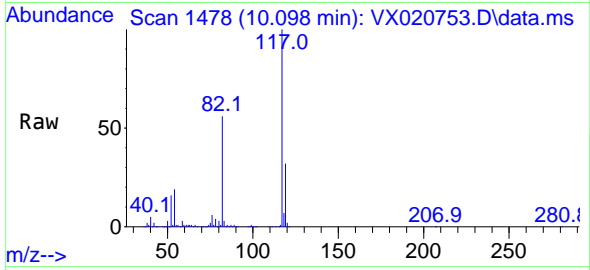


#63  
 Chlorobenzene-d5  
 Concen: 50.00 ug/l  
 RT: 10.098 min Scan# 1478  
 Delta R.T. 0.006 min  
 Lab File: VX020753.D  
 Acq: 26 Jan 2021 15:07

Instrument :  
 MSVOA\_X  
 ClientSampled :  
 41090

Tgt Ion:117 Resp: 537744

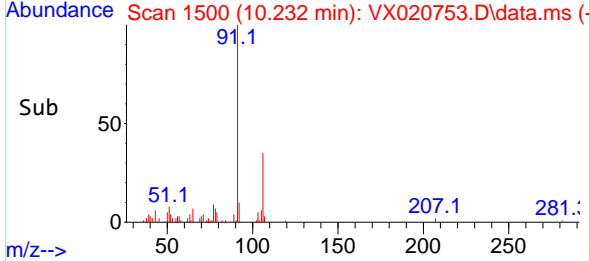
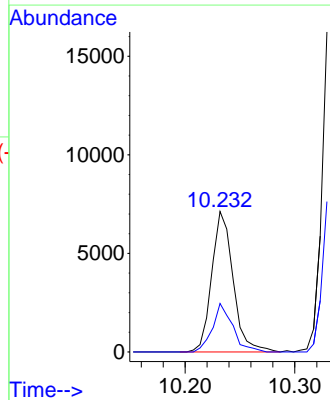
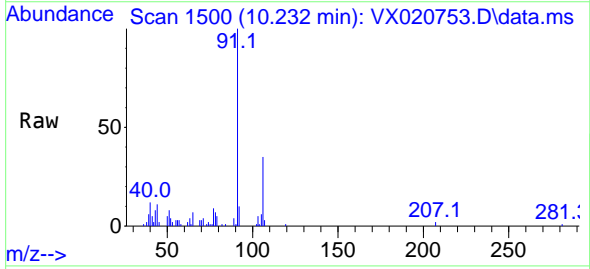
Ion	Ratio	Lower	Upper
117	100		
82	56.1	47.4	71.2
119	32.1	26.6	39.8

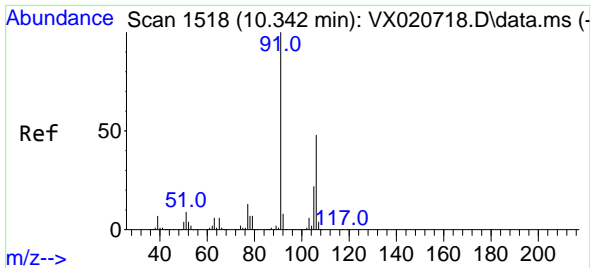


#67  
 Ethyl Benzene  
 Concen: 0.48 ug/l  
 RT: 10.232 min Scan# 1500  
 Delta R.T. -0.000 min  
 Lab File: VX020753.D  
 Acq: 26 Jan 2021 15:07

Tgt Ion: 91 Resp: 9692

Ion	Ratio	Lower	Upper
91	100		
106	34.5	24.6	37.0

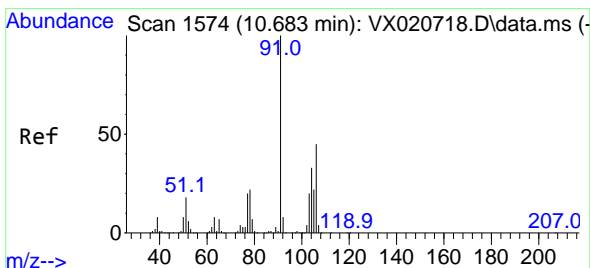
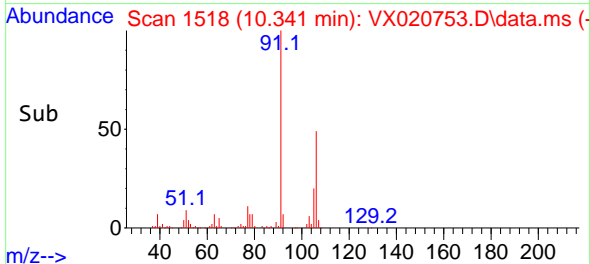
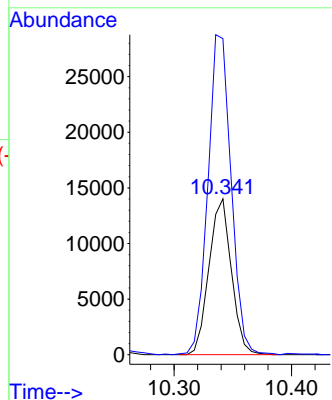
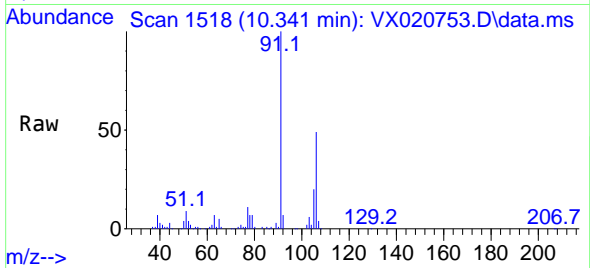




#68  
 m/p-Xylenes  
 Concen: 2.47 ug/l  
 RT: 10.341 min Scan# 1518  
 Delta R.T. -0.001 min  
 Lab File: VX020753.D  
 Acq: 26 Jan 2021 15:07

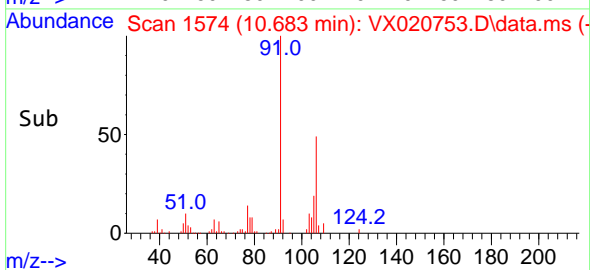
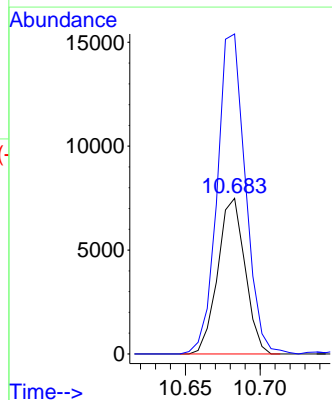
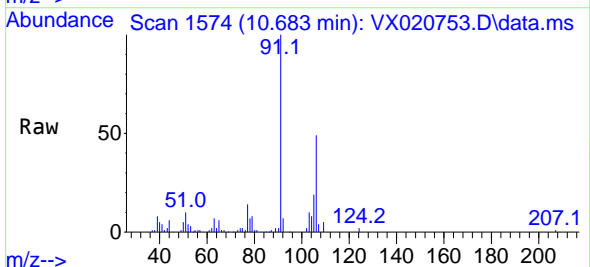
Instrument :  
 MSVOA\_X  
 ClientSampled :  
 41090

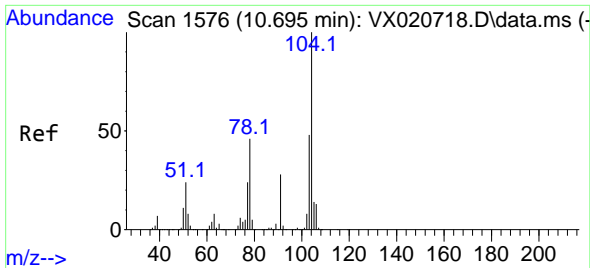
Tgt Ion:106 Resp: 18603  
 Ion Ratio Lower Upper  
 106 100  
 91 212.5 162.8 244.2



#69  
 o-Xylene  
 Concen: 1.34 ug/l  
 RT: 10.683 min Scan# 1574  
 Delta R.T. -0.000 min  
 Lab File: VX020753.D  
 Acq: 26 Jan 2021 15:07

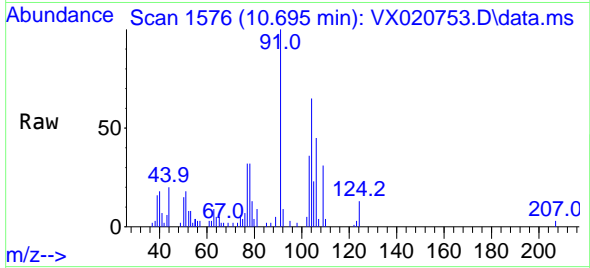
Tgt Ion:106 Resp: 9498  
 Ion Ratio Lower Upper  
 106 100  
 91 212.7 108.1 324.2





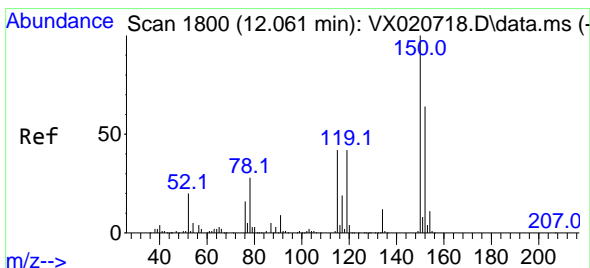
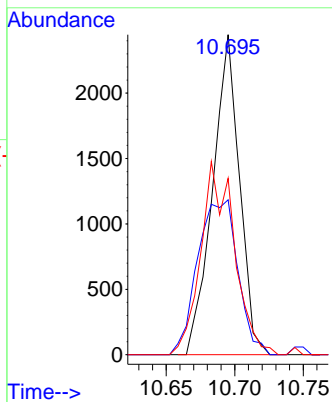
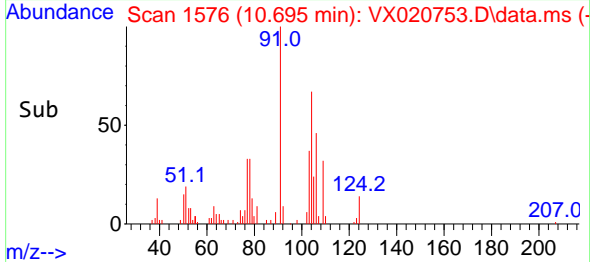
#70  
 Styrene  
 Concen: 0.27 ug/l  
 RT: 10.695 min Scan# 1576  
 Delta R.T. 0.000 min  
 Lab File: VX020753.D  
 Acq: 26 Jan 2021 15:07

Instrument :  
 MSVOA\_X  
 ClientSampled :  
 41090

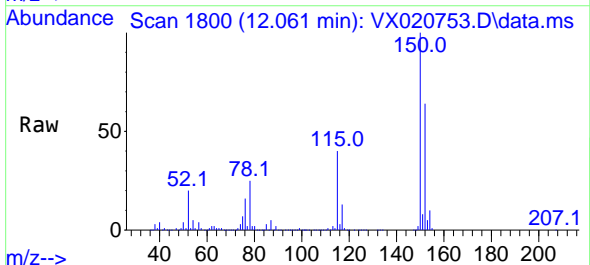


Tgt Ion:104 Resp: 3338

Ion	Ratio	Lower	Upper
104	100		
78	72.2	40.0	60.0#
103	75.0	43.4	65.0#

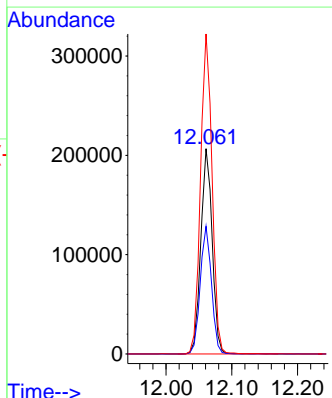
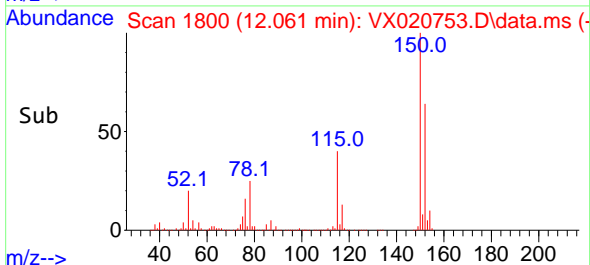


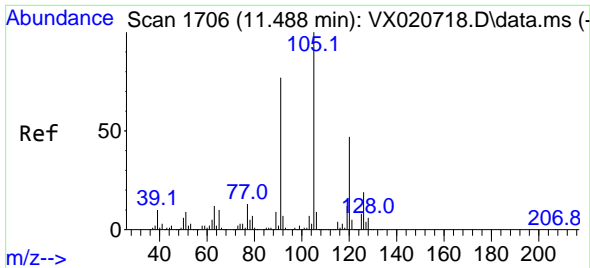
#72  
 1,4-Dichlorobenzene-d4  
 Concen: 50.00 ug/l  
 RT: 12.061 min Scan# 1800  
 Delta R.T. -0.000 min  
 Lab File: VX020753.D  
 Acq: 26 Jan 2021 15:07



Tgt Ion:152 Resp: 248444

Ion	Ratio	Lower	Upper
152	100		
115	61.7	41.1	123.3
150	158.3	0.0	349.0

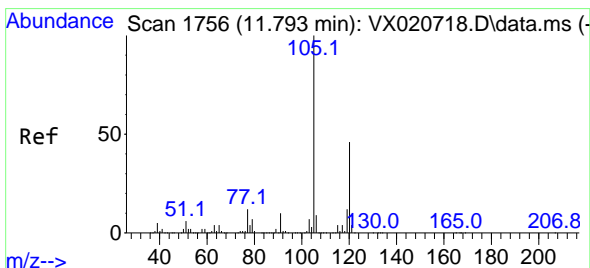
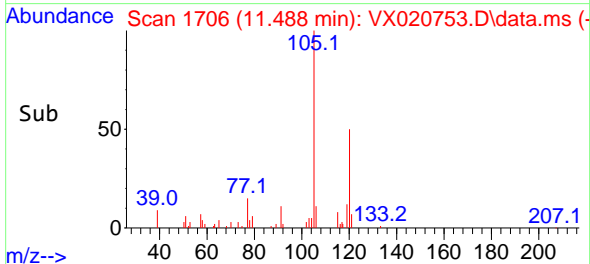
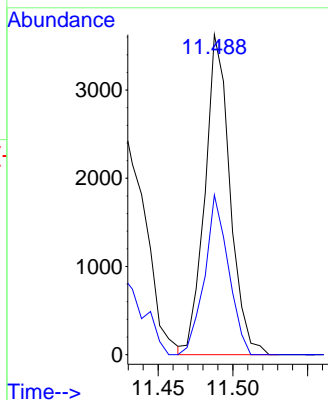
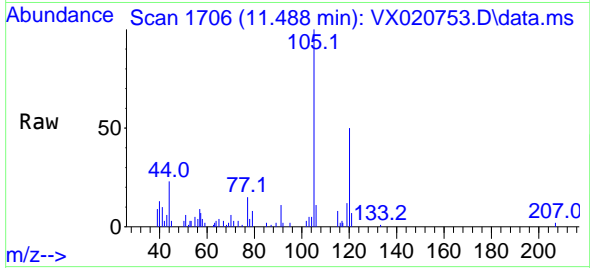




#80  
 1,3,5-Trimethylbenzene  
 Concen: 0.28 ug/l  
 RT: 11.488 min Scan# 1706  
 Delta R.T. -0.000 min  
 Lab File: VX020753.D  
 Acq: 26 Jan 2021 15:07

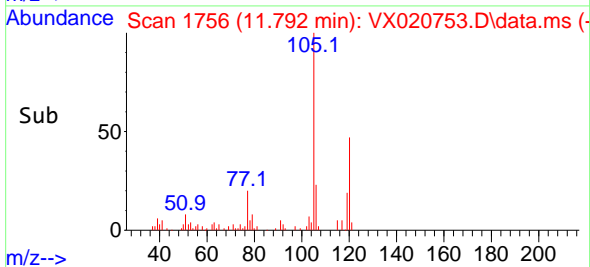
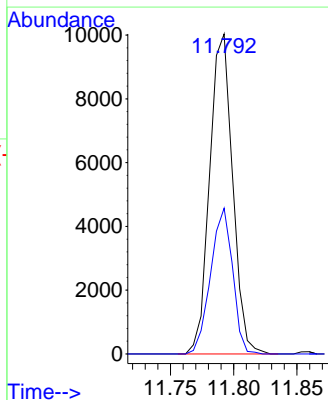
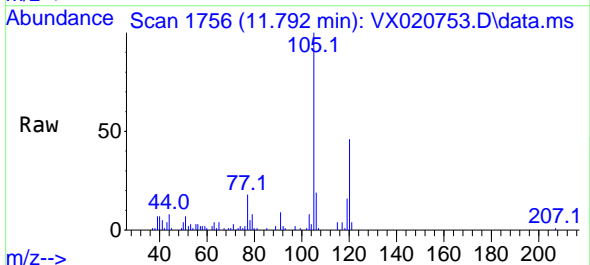
Instrument :  
 MSVOA\_X  
 ClientSampled :  
 41090

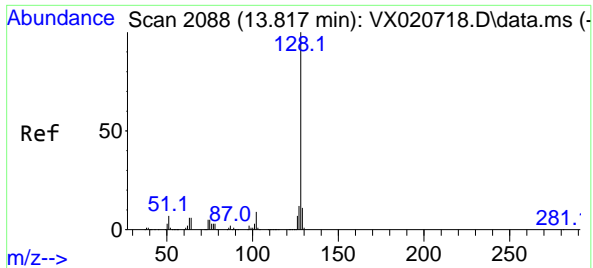
Tgt Ion:105 Resp: 4233  
 Ion Ratio Lower Upper  
 105 100  
 120 47.4 23.8 71.5



#84  
 1,2,4-Trimethylbenzene  
 Concen: 0.82 ug/l  
 RT: 11.792 min Scan# 1756  
 Delta R.T. -0.001 min  
 Lab File: VX020753.D  
 Acq: 26 Jan 2021 15:07

Tgt Ion:105 Resp: 12676  
 Ion Ratio Lower Upper  
 105 100  
 120 43.5 22.4 67.3





#95  
 Naphthalene  
 Concen: 5.23 ug/l  
 RT: 13.816 min Scan# 2088  
 Delta R.T. -0.001 min  
 Lab File: VX020753.D  
 Acq: 26 Jan 2021 15:07

Instrument :  
 MSVOA\_X  
 ClientSampled :  
 41090

Tgt Ion:128 Resp: 47640

Ion	Ratio	Lower	Upper
128	100		
127	12.7	10.3	15.5
129	12.0	8.8	13.2

