

Data Path : Z:\voasrv\HPCHEM1\MSVOA_X\Data\VX012621\
 Data File : VX020748.D
 Acq On : 26 Jan 2021 13:10
 Operator : JC/SP
 Sample : M1189-06 50X
 Misc : 5.0mL/MSVOA_X/WATER
 ALS Vial : 9 Sample Multiplier: 1

Instrument :
 MSVOA_X
 ClientSampleId :
 41041

Integration Parameters: RTEINT.P

Integrator: RTE
 Smoothing : ON Filtering: 5
 Sampling : 1 Min Area: 3 % of largest Peak
 Start Thrs: 0.2 Max Peaks: 100
 Stop Thrs : 0 Peak Location: TOP

If leading or trailing edge < 100 prefer < Baseline drop else tangent >
 Peak separation: 5

Method : Z:\VOASRV\HPCHEM1\MSVOA_X\METHOD\82X012521W.M
 Title : SW846 8260

Signal : TIC: VX020748.D\data.ms

peak #	R.T. min	first scan	max scan	last scan	PK TY	peak height	corr. area	corr. % max.	% of total
1	1.471	59	63	74	rBV	317633	371301	2.61%	1.533%
2	2.416	212	218	229	rVB	135099	224769	1.58%	0.928%
3	2.581	236	245	259	rBV	108693	207784	1.46%	0.858%
4	3.977	455	474	503	rBV	3895259	14214511	100.00%	58.694%
5	5.464	706	718	731	rBV	203350	582083	4.09%	2.404%
6	5.623	734	744	760	rVB	331563	945829	6.65%	3.905%
7	6.031	800	811	824	rBV	217728	577359	4.06%	2.384%
8	6.830	930	942	953	rBV	527127	1247354	8.78%	5.151%
9	8.696	1240	1248	1255	rBV	1100956	1729701	12.17%	7.142%
10	10.092	1471	1477	1489	rBV	1123316	1533681	10.79%	6.333%
11	11.122	1640	1646	1657	rBV	908151	1165810	8.20%	4.814%
12	12.061	1794	1800	1809	rBV	1179594	1417907	9.98%	5.855%

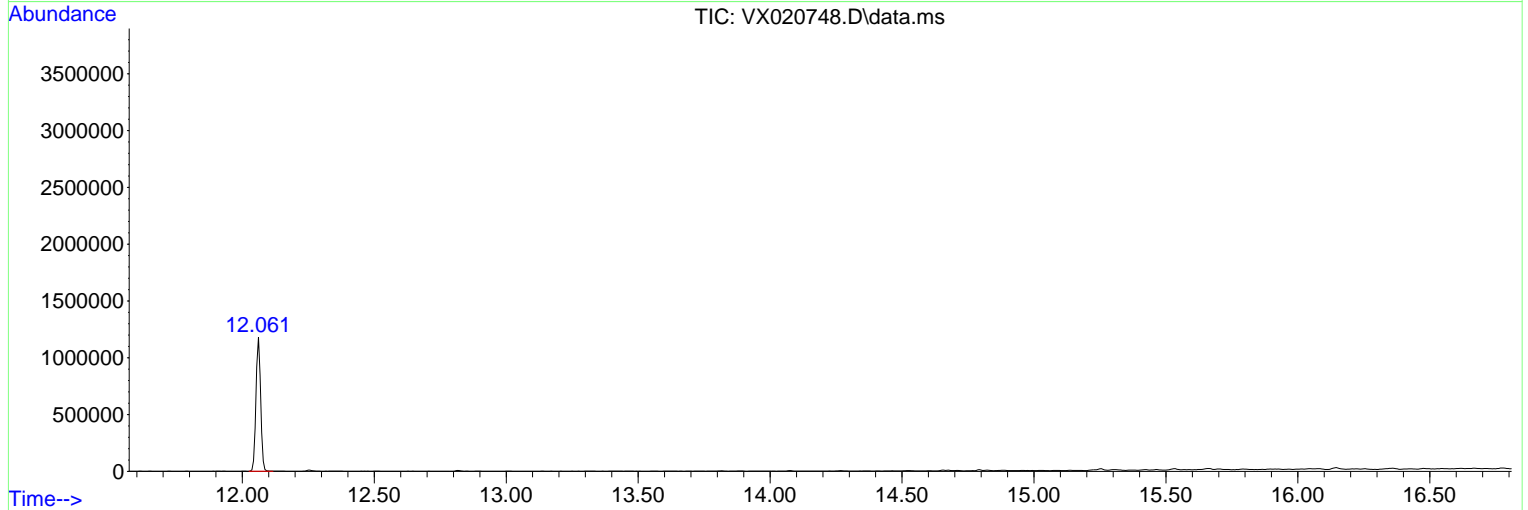
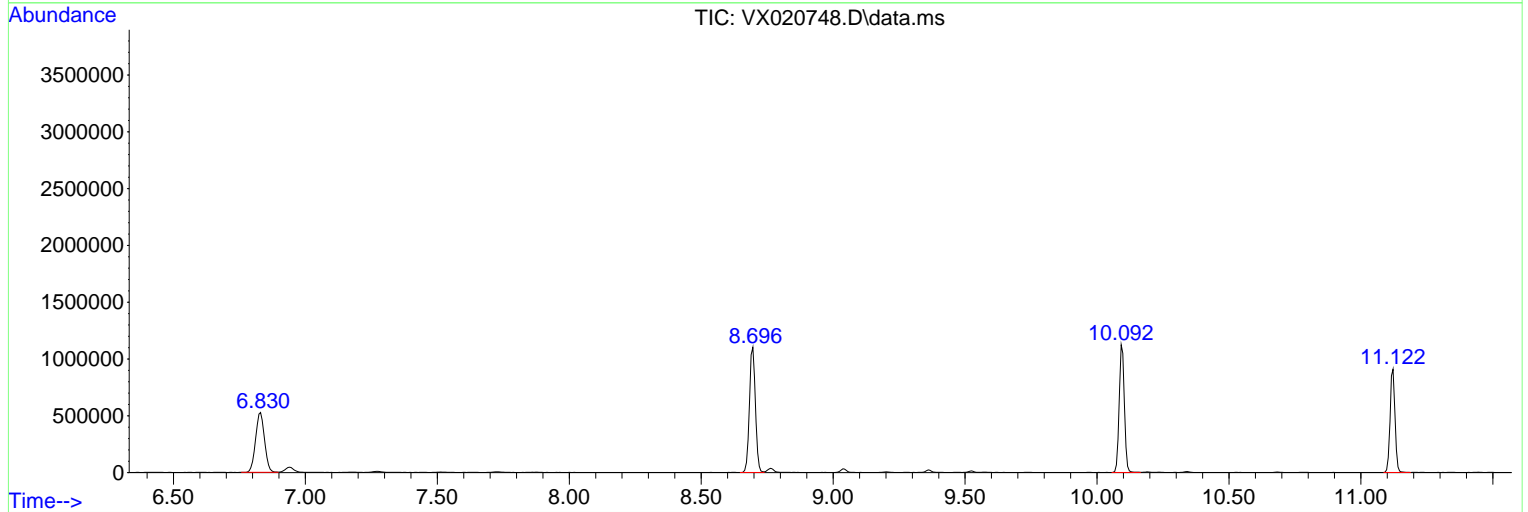
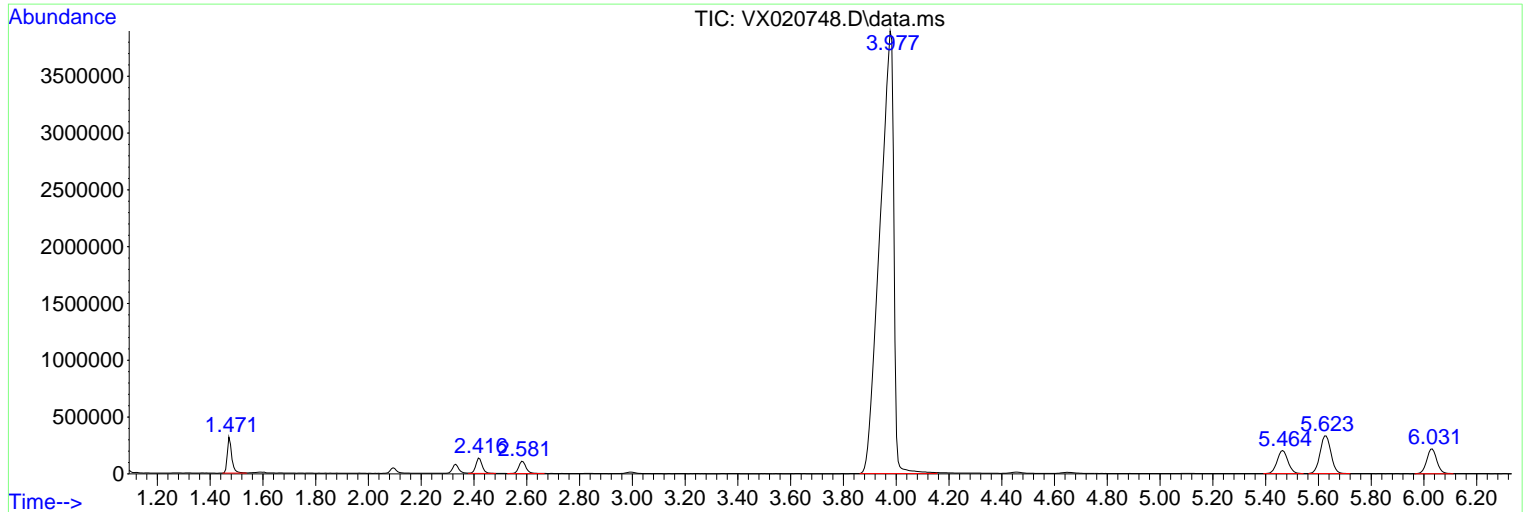
Sum of corrected areas: 24218089

Data Path : Z:\voasrv\HPCHEM1\MSVOA_X\Data\VX012621\
 Data File : VX020748.D
 Acq On : 26 Jan 2021 13:10
 Operator : JC/SP
 Sample : M1189-06 50X
 Misc : 5.0mL/MSVOA_X/WATER
 ALS Vial : 9 Sample Multiplier: 1

Instrument :
 MSVOA_X
ClientSampleId :
 41041

Quant Method : Z:\VOASRV\HPCHEM1\MSVOA_X\METHOD\82X012521W.M
 Quant Title : SW846 8260

TIC Library :
 TIC Integration Parameters: RTEINT.P



Library Search Compound Report

Data Path : Z:\voasrv\HPCHEM1\MSVOA_X\Data\VX012621\
Data File : VX020748.D
Acq On : 26 Jan 2021 13:10
Operator : JC/SP
Sample : M1189-06 50X
Misc : 5.0mL/MSVOA_X/WATER
ALS Vial : 9 Sample Multiplier: 1

Instrument :
MSVOA_X
ClientSampled :
41041

Quant Method : Z:\VOASRV\HPCHEM1\MSVOA_X\METHOD\82X012521W.M
Quant Title : SW846 8260

TIC Library :
TIC Integration Parameters: RTEINT.P

No Library Search Compounds Detected

Data Path : Z:\voasrv\HPCHEM1\MSVOA_X\Data\VX012621\
Data File : VX020748.D
Acq On : 26 Jan 2021 13:10
Operator : JC/SP
Sample : M1189-06 50X
Misc : 5.0mL/MSVOA_X/WATER
ALS Vial : 9 Sample Multiplier: 1

Instrument :
MSVOA_X
ClientSampleId :
41041

Quant Method : Z:\VOASRV\HPCHEM1\MSVOA_X\METHOD\82X012521W.M
Quant Title : SW846 8260

TIC Library :
TIC Integration Parameters: RTEINT.P

TIC Top Hit name	RT	EstConc	Units	Response	--Internal Standard--			
					#	RT	Resp	Conc
