

Data Path : Z:\voasrv\HPCHEM1\MSVOA_X\Data\VX012623\
 Data File : VX033908.D
 Acq On : 26 Jan 2023 14:46
 Operator : JC/MD
 Sample : 01323-13
 Misc : 5.0mL/MSVOA_X/WATER
 ALS Vial : 8 Sample Multiplier: 1

Instrument :
 MSVOA_X
 ClientSampleId :
 EB-01

Quant Time: Jan 27 02:54:56 2023
 Quant Method : Z:\voasrv\HPCHEM1\MSVOA_X\Method\82X011123W.M
 Quant Title : SW846 8260
 QLast Update : Wed Jan 11 14:48:42 2023
 Response via : Initial Calibration

Compound	R.T.	QIon	Response	Conc	Units	Dev(Min)

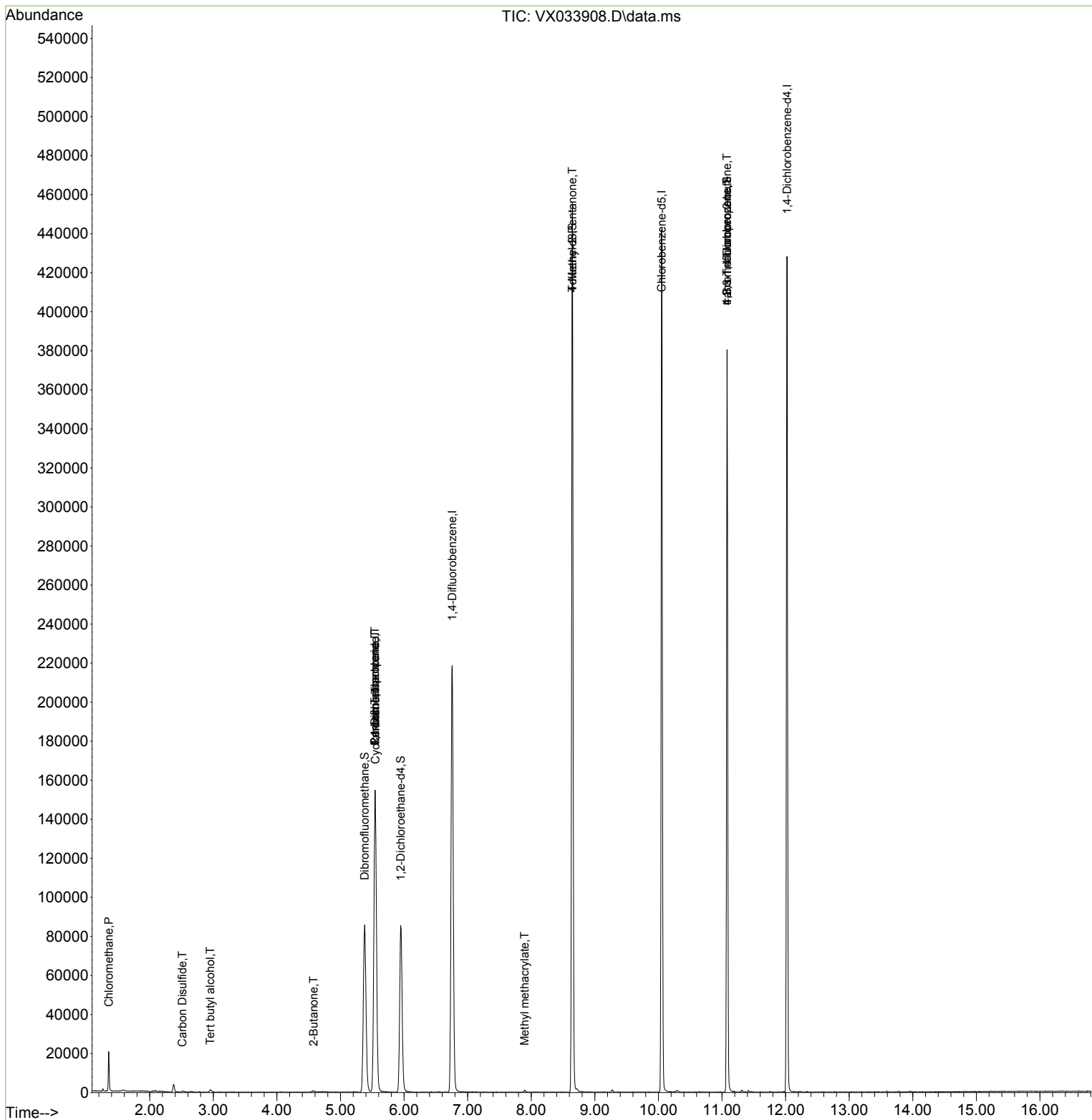
Internal Standards						
1) Pentafluorobenzene	5.544	168	167130	50.000	ug/l	0.00
34) 1,4-Difluorobenzene	6.757	114	246086	50.000	ug/l	0.00
63) Chlorobenzene-d5	10.049	117	216188	50.000	ug/l	0.00
72) 1,4-Dichlorobenzene-d4	12.024	152	104084	50.000	ug/l	0.00
System Monitoring Compounds						
33) 1,2-Dichloroethane-d4	5.946	65	81811	46.491	ug/l	-0.01
Spiked Amount	50.000	Range 78 - 117	Recovery	=	92.980%	
35) Dibromofluoromethane	5.379	113	75994	49.732	ug/l	0.00
Spiked Amount	50.000	Range 75 - 124	Recovery	=	99.460%	
50) Toluene-d8	8.647	98	279932	50.279	ug/l	0.00
Spiked Amount	50.000	Range 92 - 112	Recovery	=	100.560%	
62) 4-Bromofluorobenzene	11.079	95	95851	46.369	ug/l	0.00
Spiked Amount	50.000	Range 83 - 123	Recovery	=	92.740%	
Target Compounds						
						Qvalue
3) Chloromethane	1.356	50	509	0.345	ug/l #	73
11) Tert butyl alcohol	2.953	59	1469	4.805	ug/l #	87
16) Acetone	2.374	43	4443	Below Cal	#	85
17) Carbon Disulfide	2.514	76	621	1.996	ug/l #	76
20) Methylene Chloride	2.776	84	109	Below Cal	#	31
25) 2-Butanone	4.574	43	1652	1.437	ug/l	98
31) Cyclohexane	5.550	56	2416	0.933	ug/l #	1
36) 1,1-Dichloropropene	5.544	75	10293	4.615	ug/l #	48
37) Ethyl Acetate	4.727	43	1012	Below Cal	#	68
38) Carbon Tetrachloride	5.544	117	14109	6.108	ug/l #	15
48) Methyl methacrylate	7.897	41	402	0.227	ug/l #	26
51) 4-Methyl-2-Pentanone	8.647	43	1171	0.542	ug/l #	1
73) Isopropylbenzene	10.964	105	39	Below Cal	#	48
75) 1,1,2,2-Tetrachloroethane	11.085	83	20	Below Cal	#	1
76) 1,2,3-Trichloropropane	11.079	75	44593	23.318	ug/l #	34
77) Bromobenzene	11.201	156	42	Below Cal		58
79) 2-Chlorotoluene	11.366	91	102	Below Cal	#	39
81) trans-1,4-Dichloro-2-b...	11.079	75	44593	72.470	ug/l #	8
82) 4-Chlorotoluene	11.457	91	240	Below Cal	#	43

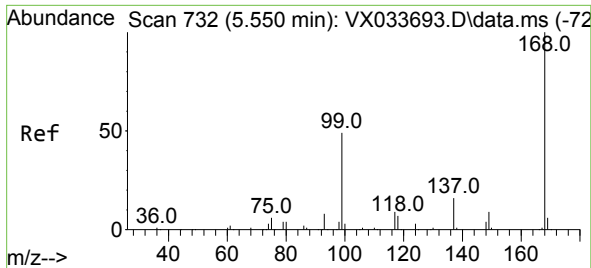
(#) = qualifier out of range (m) = manual integration (+) = signals summed

Data Path : Z:\voasrv\HPCHEM1\MSVOA_X\Data\VX012623\
 Data File : VX033908.D
 Acq On : 26 Jan 2023 14:46
 Operator : JC/MD
 Sample : 01323-13
 Misc : 5.0mL/MSVOA_X/WATER
 ALS Vial : 8 Sample Multiplier: 1

Instrument :
 MSVOA_X
 ClientSampleId :
 EB-01

Quant Time: Jan 27 02:54:56 2023
 Quant Method : Z:\voasrv\HPCHEM1\MSVOA_X\Method\82X011123W.M
 Quant Title : SW846 8260
 QLast Update : Wed Jan 11 14:48:42 2023
 Response via : Initial Calibration

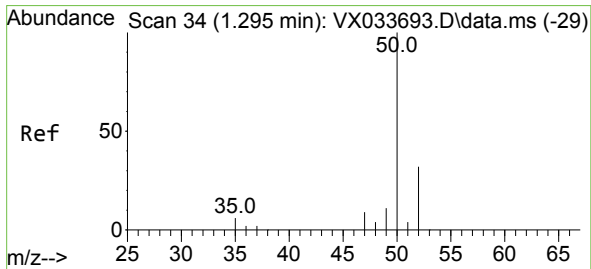
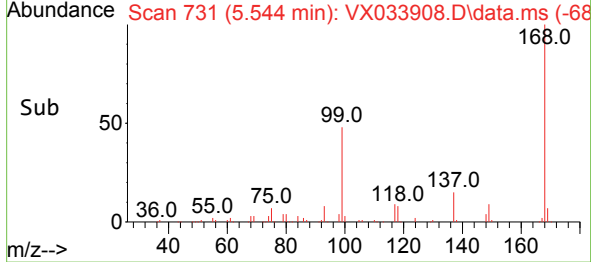
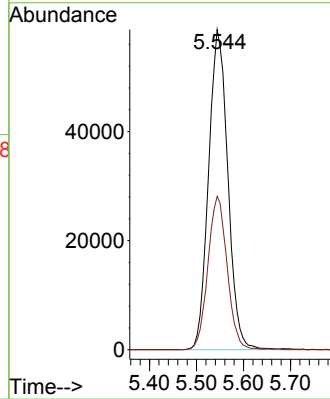
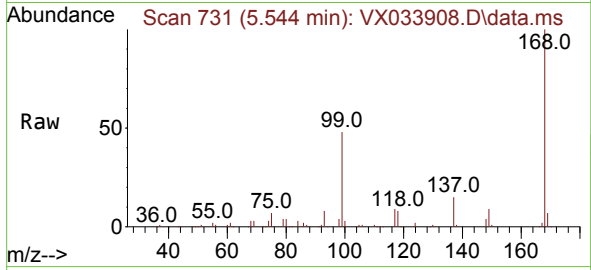




#1
 Pentafluorobenzene
 Concen: 50.000 ug/l
 RT: 5.544 min Scan# 71
 Delta R.T. -0.006 min
 Lab File: VX033908.D
 Acq: 26 Jan 2023 14:46

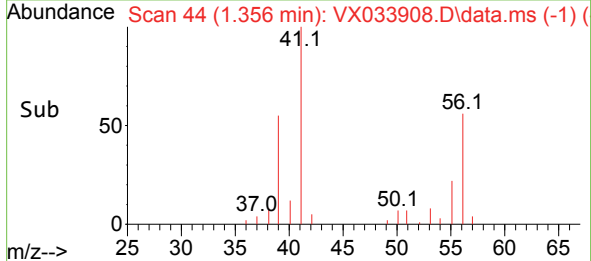
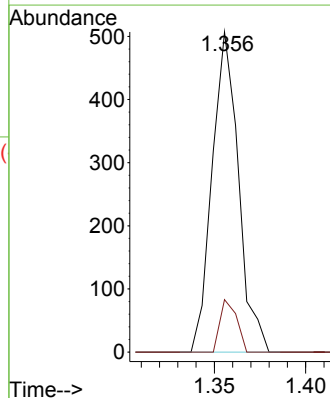
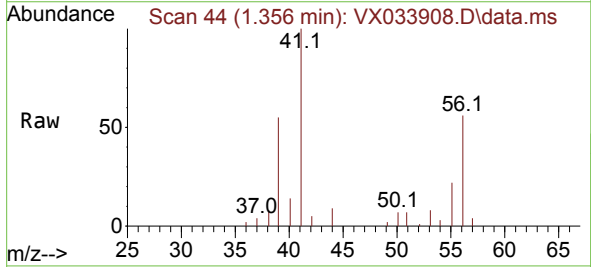
Instrument :
 MSVOA_X
 ClientSampleId :
 EB-01

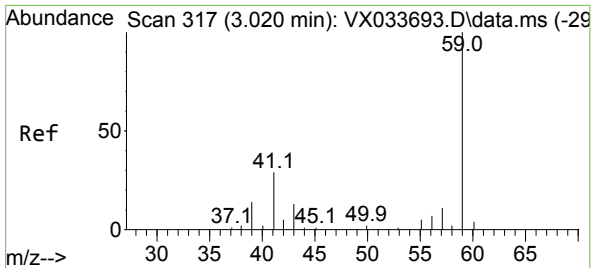
Tgt Ion:168 Resp: 167130
 Ion Ratio Lower Upper
 168 100
 99 47.9 39.6 59.4



#3
 Chloromethane
 Concen: 0.345 ug/l
 RT: 1.356 min Scan# 44
 Delta R.T. 0.061 min
 Lab File: VX033908.D
 Acq: 26 Jan 2023 14:46

Tgt Ion: 50 Resp: 509
 Ion Ratio Lower Upper
 50 100
 52 16.4 25.2 37.8#

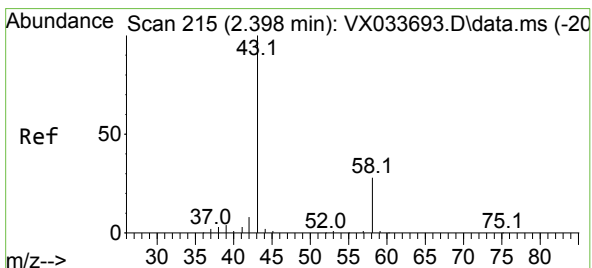
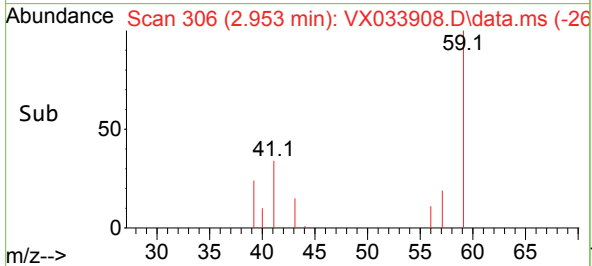
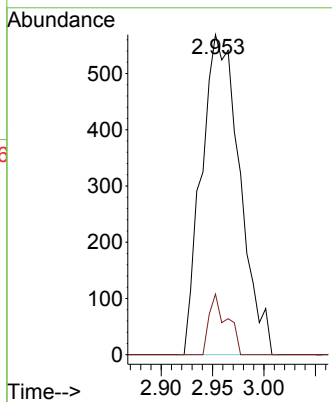
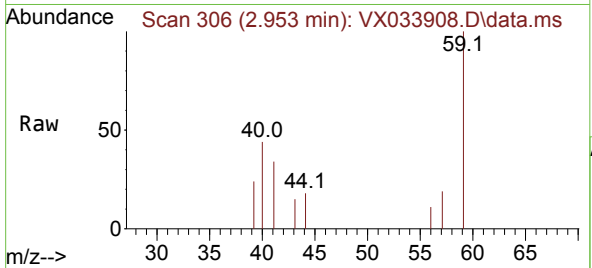




#11
 Tert butyl alcohol
 Concen: 4.805 ug/l
 RT: 2.953 min Scan# 306
 Delta R.T. -0.067 min
 Lab File: VX033908.D
 Acq: 26 Jan 2023 14:46

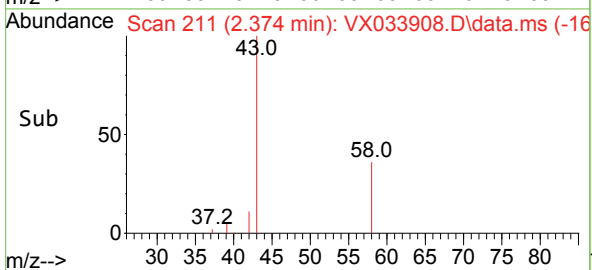
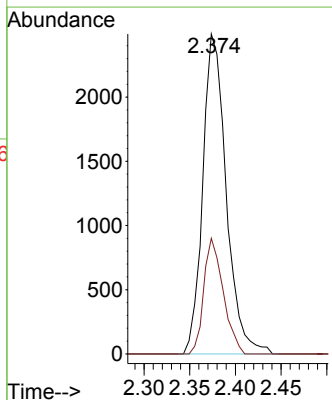
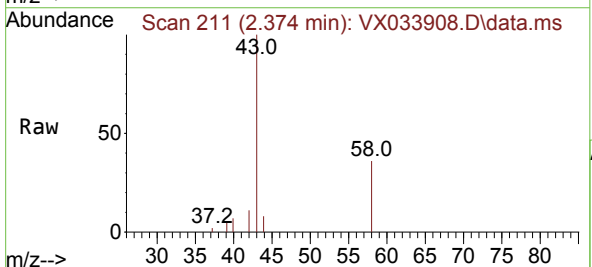
Instrument : MSVOA_X
 ClientSampleId : EB-01

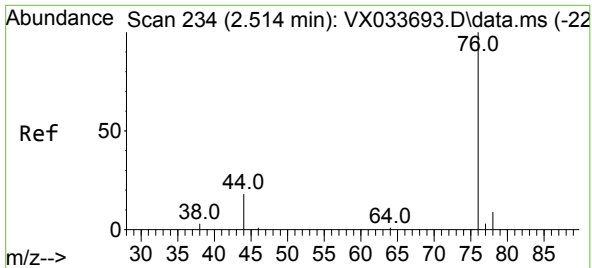
Tgt Ion: 59 Resp: 1469
 Ion Ratio Lower Upper
 59 100
 57 8.9 3.7 5.5#



#16
 Acetone
 Concen: Below Cal
 RT: 2.374 min Scan# 211
 Delta R.T. -0.024 min
 Lab File: VX033908.D
 Acq: 26 Jan 2023 14:46

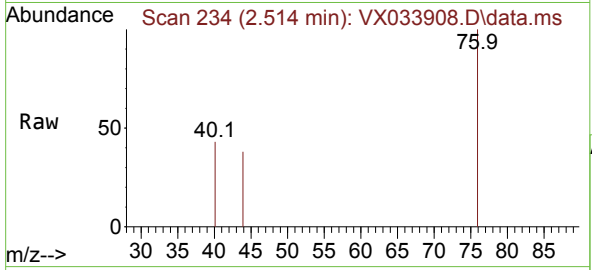
Tgt Ion: 43 Resp: 4443
 Ion Ratio Lower Upper
 43 100
 58 36.2 22.6 33.8#



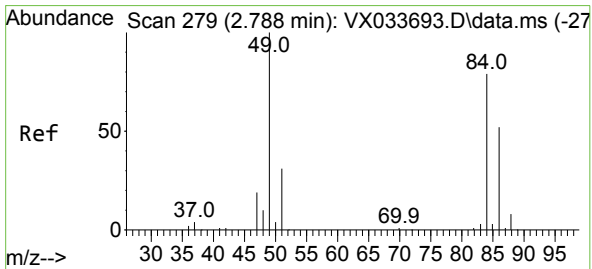
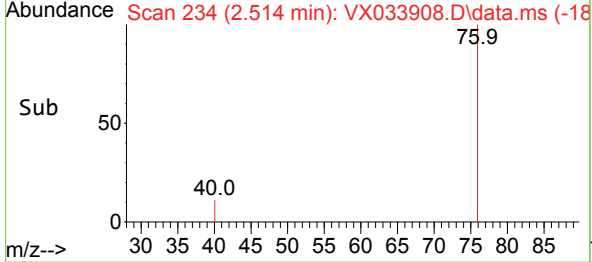
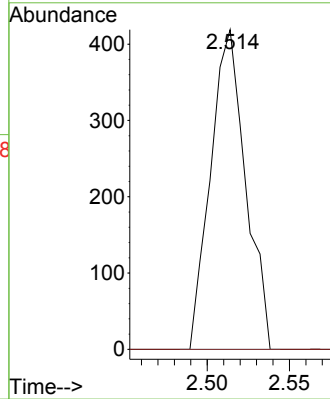


#17
 Carbon Disulfide
 Concen: 1.996 ug/l
 RT: 2.514 min Scan# 21
 Delta R.T. -0.000 min
 Lab File: VX033908.D
 Acq: 26 Jan 2023 14:46

Instrument :
 MSVOA_X
 ClientSampleId :
 EB-01

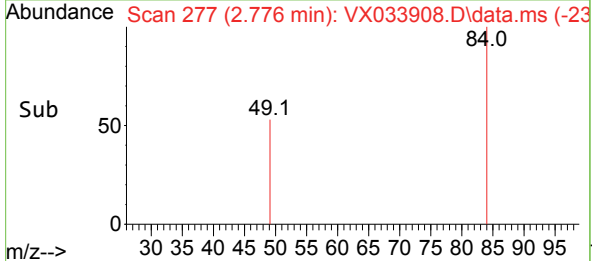
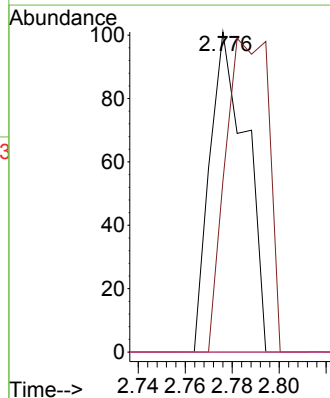
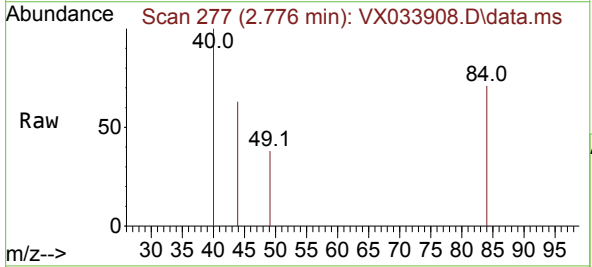


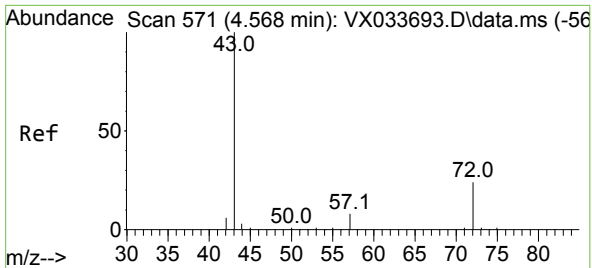
Tgt Ion: 76 Resp: 621
 Ion Ratio Lower Upper
 76 100
 78 0.0 7.0 10.6#



#20
 Methylene Chloride
 Concen: Below Cal
 RT: 2.776 min Scan# 277
 Delta R.T. -0.012 min
 Lab File: VX033908.D
 Acq: 26 Jan 2023 14:46

Tgt Ion: 84 Resp: 109
 Ion Ratio Lower Upper
 84 100
 49 53.5 101.1 151.7#
 51 0.0 31.0 46.6#
 86 0.0 52.6 79.0#

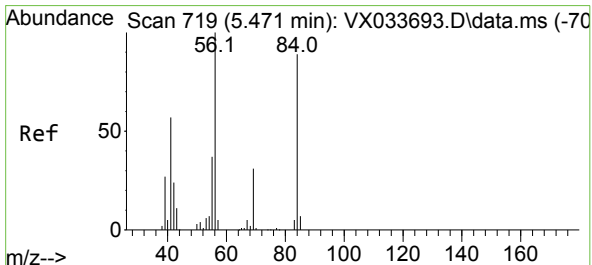
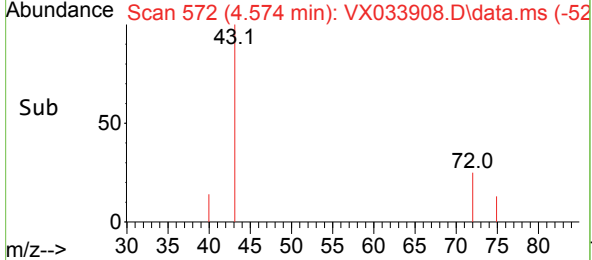
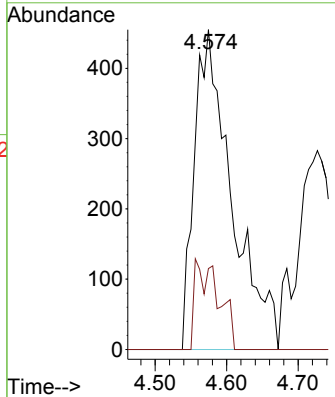
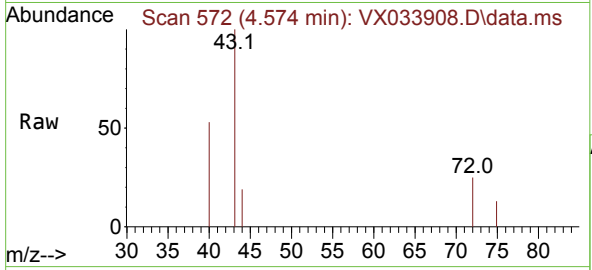




#25
 2-Butanone
 Concen: 1.437 ug/l
 RT: 4.574 min Scan# 51
 Delta R.T. 0.006 min
 Lab File: VX033908.D
 Acq: 26 Jan 2023 14:46

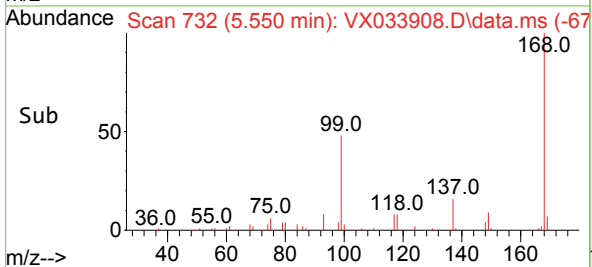
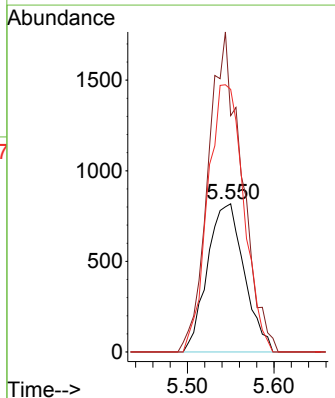
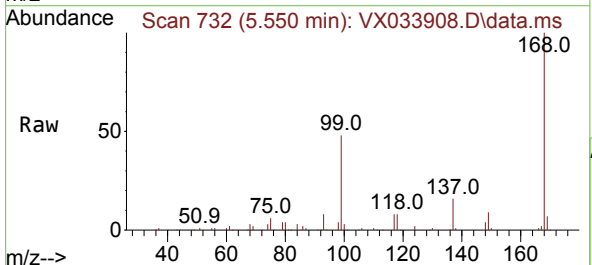
Instrument : MSVOA_X
 ClientSampleId : EB-01

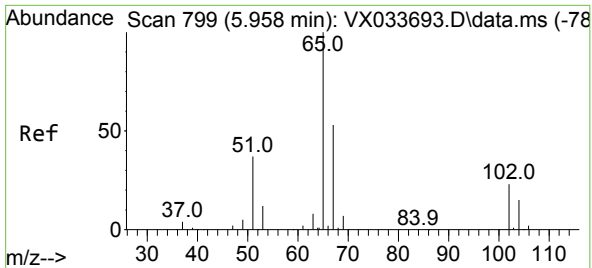
Tgt Ion: 43 Resp: 1652
 Ion Ratio Lower Upper
 43 100
 72 25.3 19.4 29.2



#31
 Cyclohexane
 Concen: 0.933 ug/l
 RT: 5.550 min Scan# 732
 Delta R.T. 0.079 min
 Lab File: VX033908.D
 Acq: 26 Jan 2023 14:46

Tgt Ion: 56 Resp: 2416
 Ion Ratio Lower Upper
 56 100
 69 159.4 24.6 37.0#
 84 177.1 71.0 106.6#

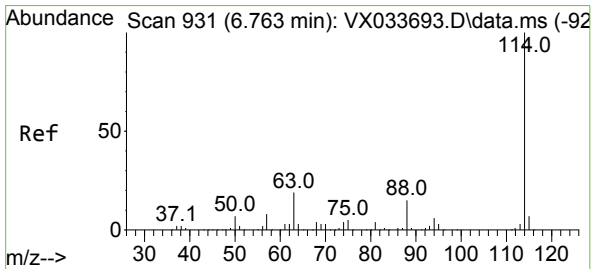
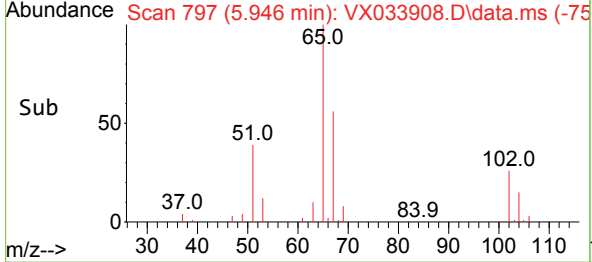
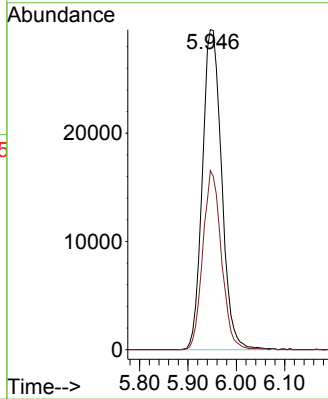
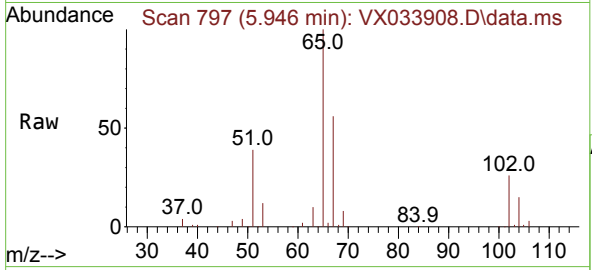




#33
 1,2-Dichloroethane-d4
 Concen: 46.491 ug/l
 RT: 5.946 min Scan# 797
 Delta R.T. -0.012 min
 Lab File: VX033908.D
 Acq: 26 Jan 2023 14:46

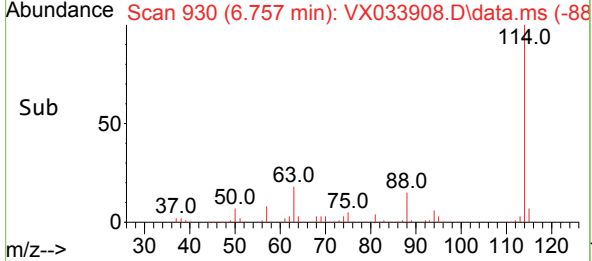
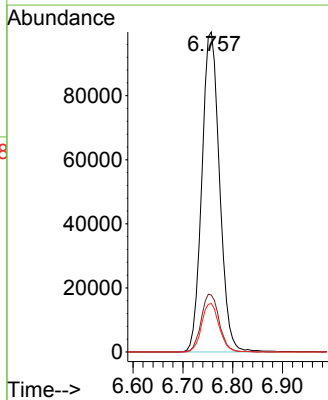
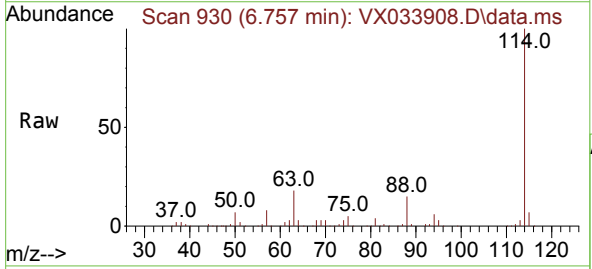
Instrument : MSVOA_X
 ClientSampleId : EB-01

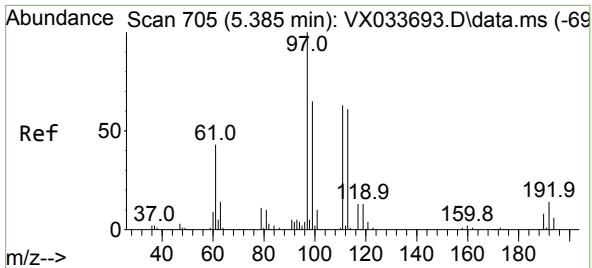
Tgt Ion	Resp	Ion Ratio	Lower	Upper
65	81811	100		
67	53.8	0.0	0.0	104.8



#34
 1,4-Difluorobenzene
 Concen: 50.000 ug/l
 RT: 6.757 min Scan# 930
 Delta R.T. -0.006 min
 Lab File: VX033908.D
 Acq: 26 Jan 2023 14:46

Tgt Ion	Resp	Ion Ratio	Lower	Upper
114	246086	100		
63	17.8	0.0	0.0	37.4
88	15.1	0.0	0.0	30.6

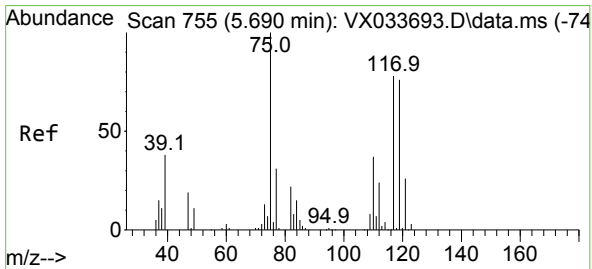
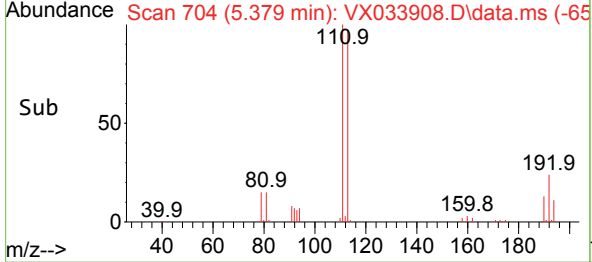
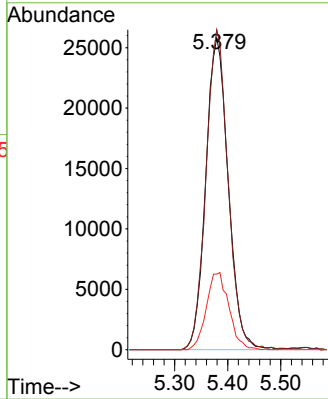
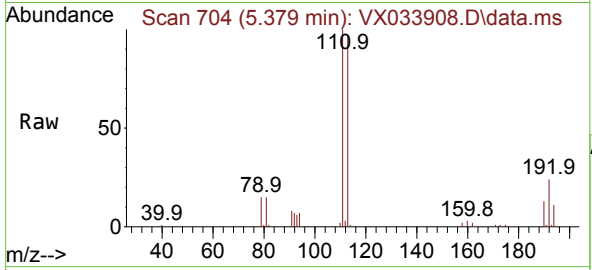




#35
 Dibromofluoromethane
 Concen: 49.732 ug/l
 RT: 5.379 min Scan# 704
 Delta R.T. -0.006 min
 Lab File: VX033908.D
 Acq: 26 Jan 2023 14:46

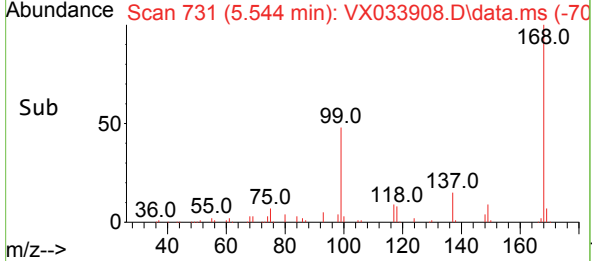
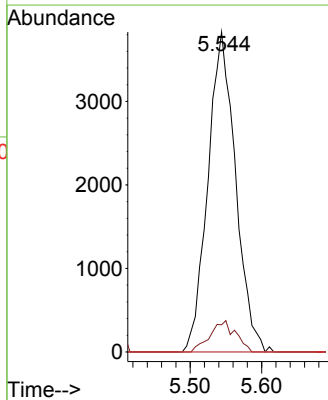
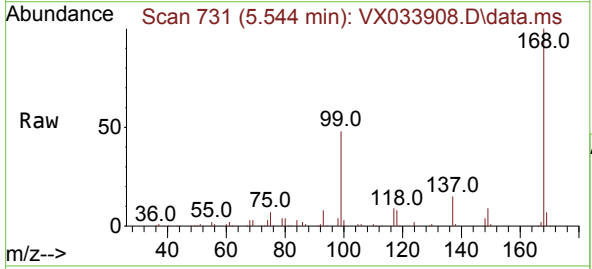
Instrument : MSVOA_X
 ClientSampleId : EB-01

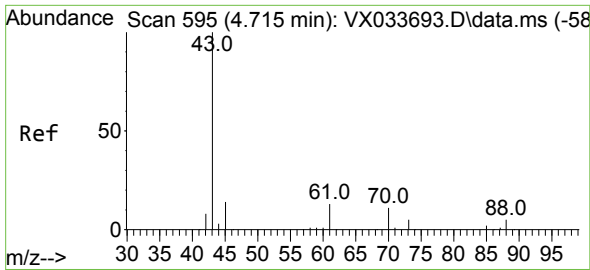
Tgt Ion	Resp	Lower	Upper
113	75994		
113	100		
111	100.9	83.0	124.6
192	24.8	19.0	28.4



#36
 1,1-Dichloropropene
 Concen: 4.615 ug/l
 RT: 5.544 min Scan# 731
 Delta R.T. -0.146 min
 Lab File: VX033908.D
 Acq: 26 Jan 2023 14:46

Tgt Ion	Resp	Lower	Upper
75	10293		
75	100		
110	9.0	18.8	56.4#
77	0.0	25.1	37.7#



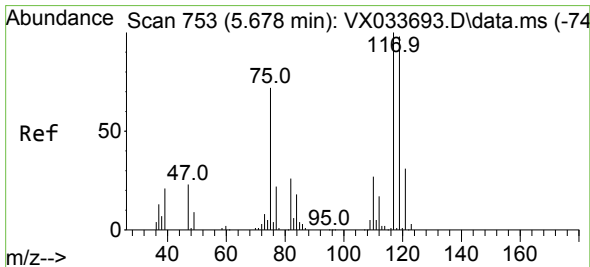
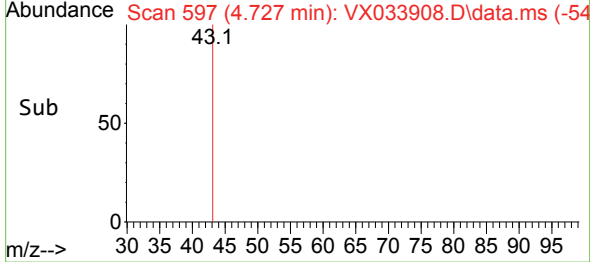
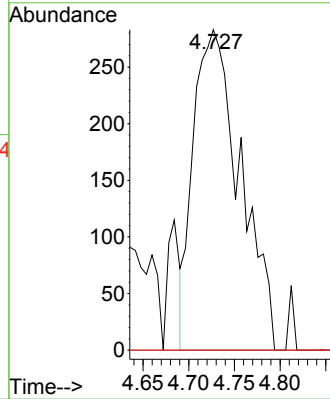
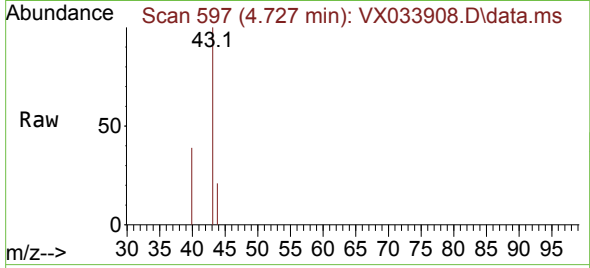


#37
 Ethyl Acetate
 Concen: Below Cal
 RT: 4.727 min Scan# 595
 Delta R.T. 0.012 min
 Lab File: VX033908.D
 Acq: 26 Jan 2023 14:46

Instrument : MSVOA_X
 ClientSampleId : EB-01

Tgt Ion: 43 Resp: 1012

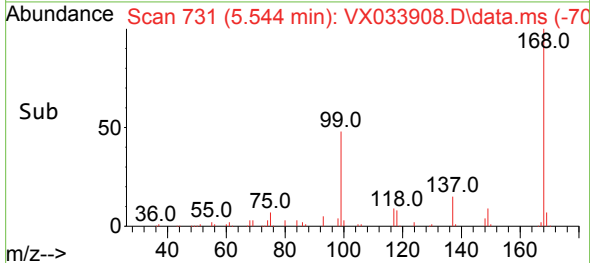
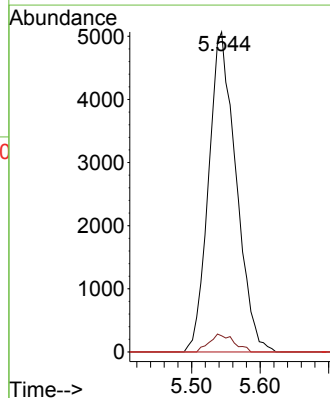
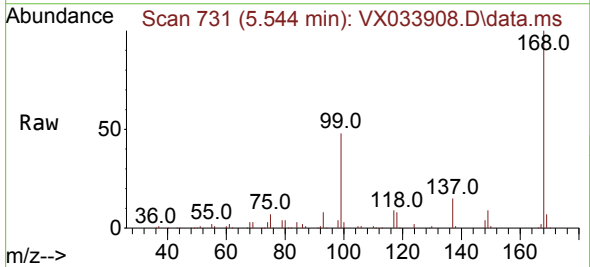
Ion	Ratio	Lower	Upper
43	100		
61	0.0	11.1	16.7#
70	0.0	8.5	12.7#

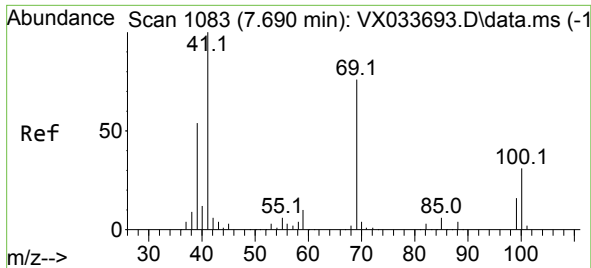


#38
 Carbon Tetrachloride
 Concen: 6.108 ug/l
 RT: 5.544 min Scan# 731
 Delta R.T. -0.134 min
 Lab File: VX033908.D
 Acq: 26 Jan 2023 14:46

Tgt Ion: 117 Resp: 14109

Ion	Ratio	Lower	Upper
117	100		
119	5.1	78.0	117.0#
121	0.0	24.4	36.6#

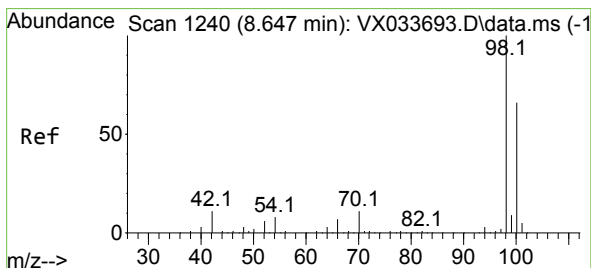
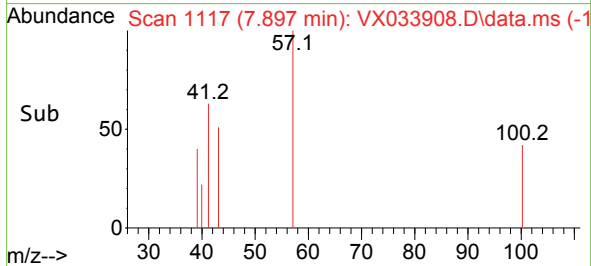
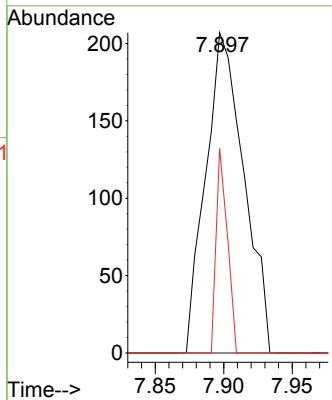
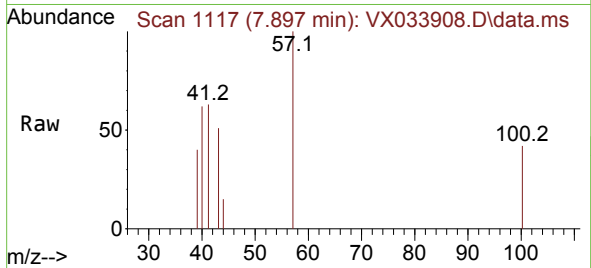




#48
 Methyl methacrylate
 Concen: 0.227 ug/l
 RT: 7.897 min Scan# 1117
 Delta R.T. 0.207 min
 Lab File: VX033908.D
 Acq: 26 Jan 2023 14:46

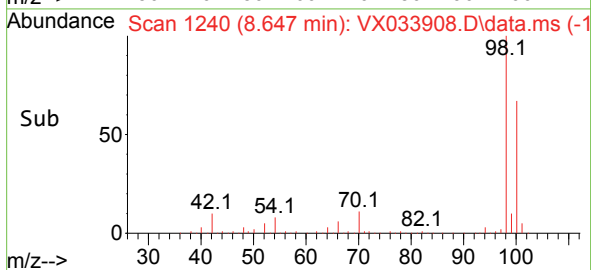
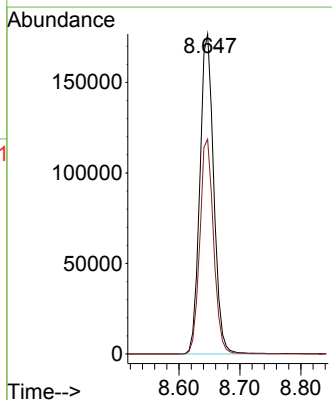
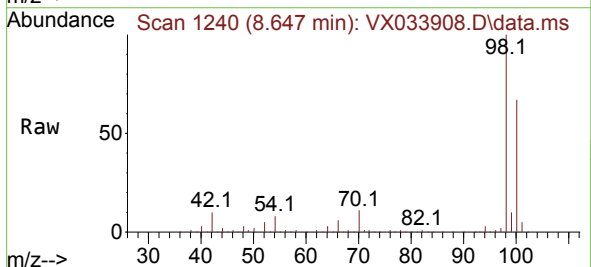
Instrument : MSVOA_X
 ClientSampleId : EB-01

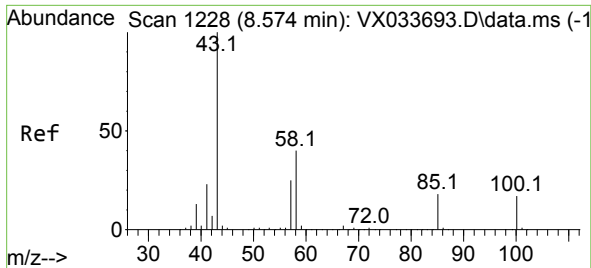
Tgt Ion	Resp	Lower	Upper
41	100		
69	0.0	63.1	94.7#
39	18.4	43.2	64.8#



#50
 Toluene-d8
 Concen: 50.279 ug/l
 RT: 8.647 min Scan# 1240
 Delta R.T. 0.000 min
 Lab File: VX033908.D
 Acq: 26 Jan 2023 14:46

Tgt Ion	Resp	Lower	Upper
98	100		
100	66.6	53.6	80.4

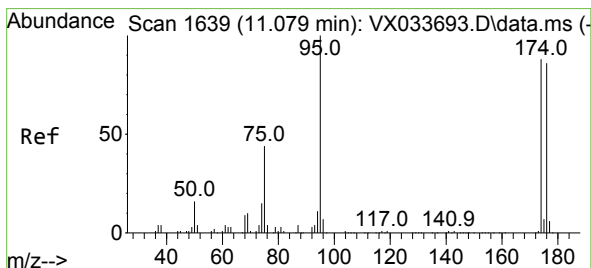
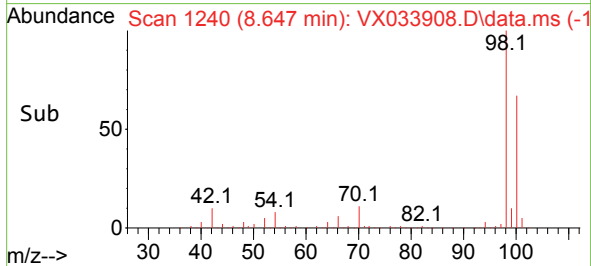
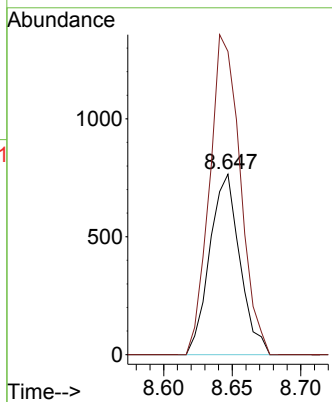
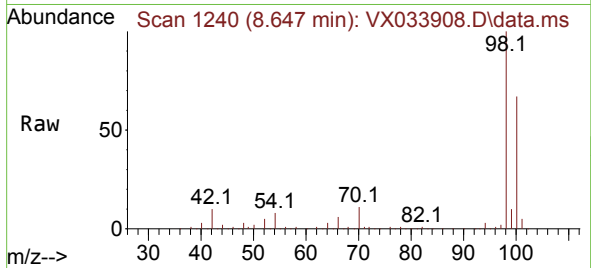




#51
 4-Methyl-2-Pentanone
 Concen: 0.542 ug/l
 RT: 8.647 min Scan# 1171
 Delta R.T. 0.073 min
 Lab File: VX033908.D
 Acq: 26 Jan 2023 14:46

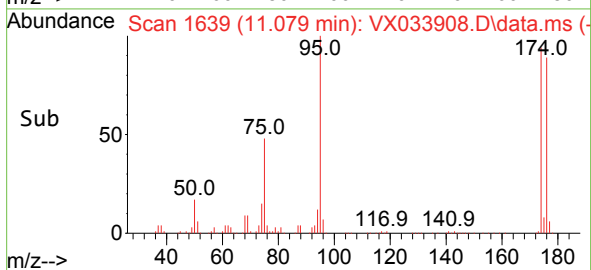
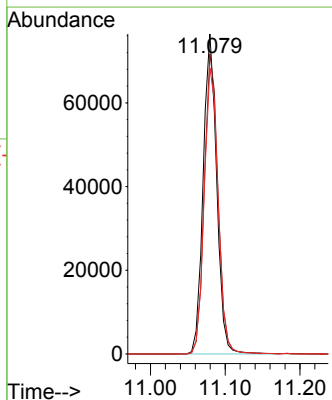
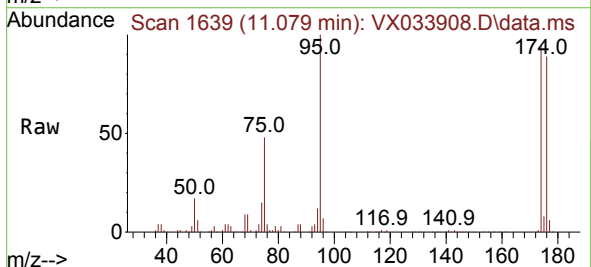
Instrument : MSVOA_X
 ClientSampleId : EB-01

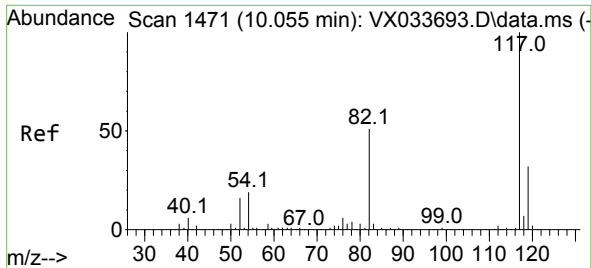
Tgt Ion: 43 Resp: 1171
 Ion Ratio Lower Upper
 43 100
 58 180.7 31.2 46.8#



#62
 4-Bromofluorobenzene
 Concen: 46.369 ug/l
 RT: 11.079 min Scan# 1639
 Delta R.T. 0.000 min
 Lab File: VX033908.D
 Acq: 26 Jan 2023 14:46

Tgt Ion: 95 Resp: 95851
 Ion Ratio Lower Upper
 95 100
 174 95.5 0.0 184.4
 176 92.4 0.0 178.8



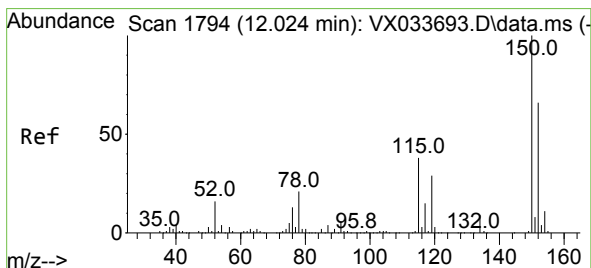
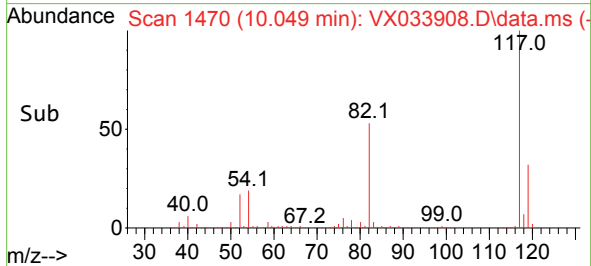
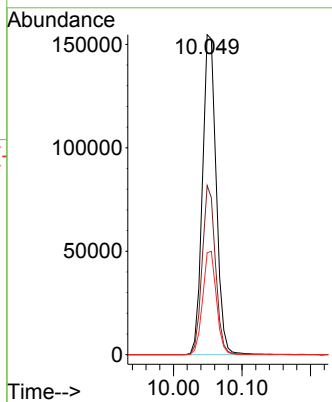
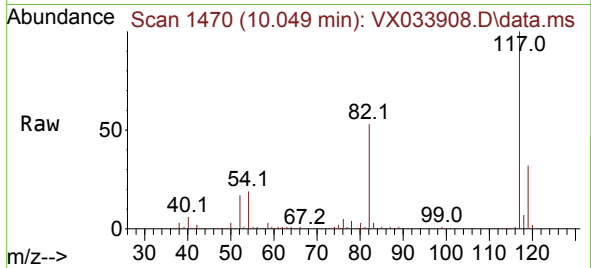


#63
 Chlorobenzene-d5
 Concen: 50.000 ug/l
 RT: 10.049 min Scan# 1470
 Delta R.T. -0.006 min
 Lab File: VX033908.D
 Acq: 26 Jan 2023 14:46

Instrument : MSVOA_X
 ClientSampleId : EB-01

Tgt Ion:117 Resp: 216188

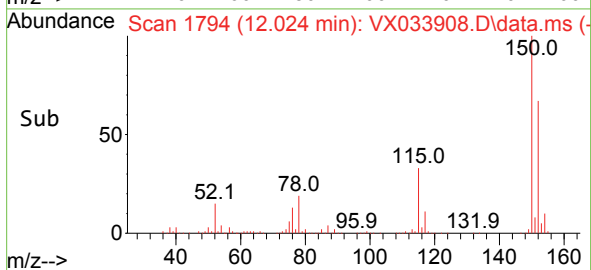
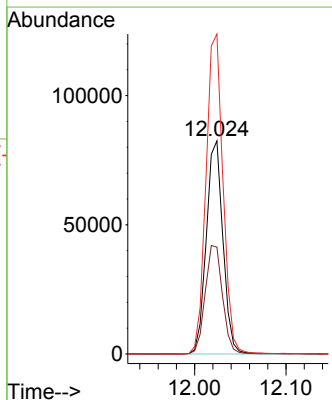
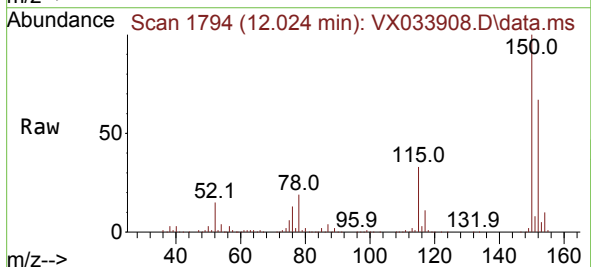
Ion	Ratio	Lower	Upper
117	100		
82	52.8	40.6	60.8
119	31.9	25.6	38.4

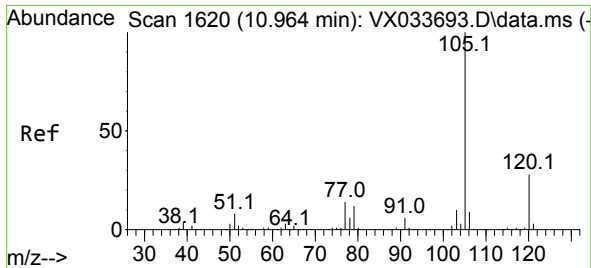


#72
 1,4-Dichlorobenzene-d4
 Concen: 50.000 ug/l
 RT: 12.024 min Scan# 1794
 Delta R.T. 0.000 min
 Lab File: VX033908.D
 Acq: 26 Jan 2023 14:46

Tgt Ion:152 Resp: 104084

Ion	Ratio	Lower	Upper
152	100		
115	53.0	38.7	116.1
150	153.6	0.0	348.2

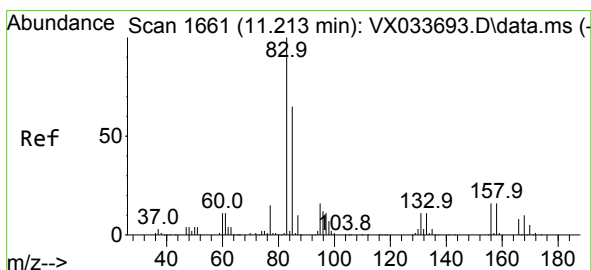
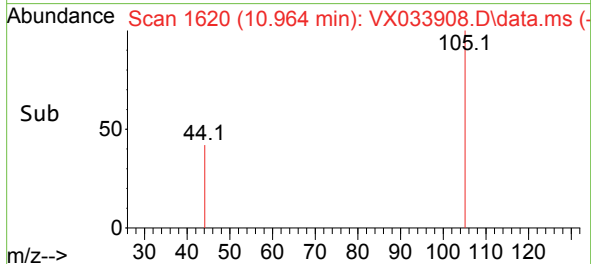
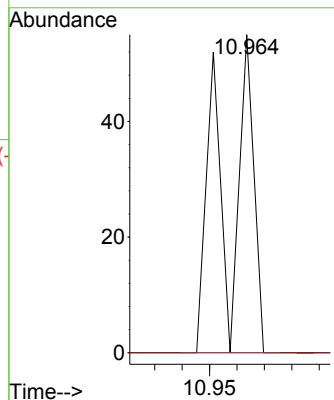
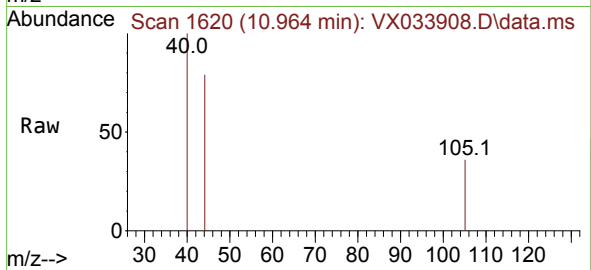




#73
 Isopropylbenzene
 Concen: Below Cal
 RT: 10.964 min Scan# 1640
 Delta R.T. -0.000 min
 Lab File: VX033908.D
 Acq: 26 Jan 2023 14:46

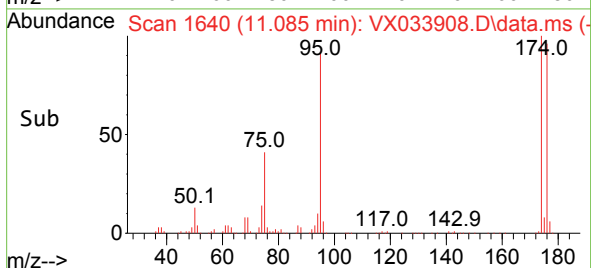
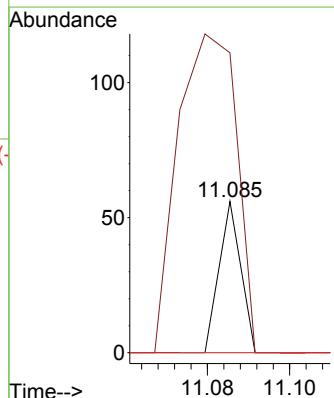
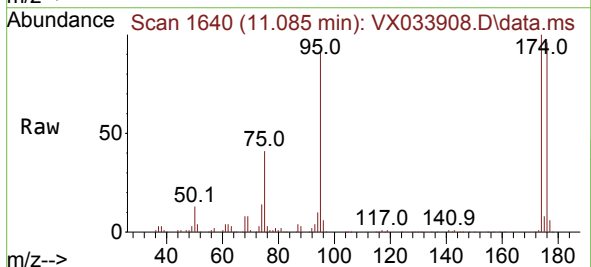
Instrument :
 MSVOA_X
 ClientSampleId :
 EB-01

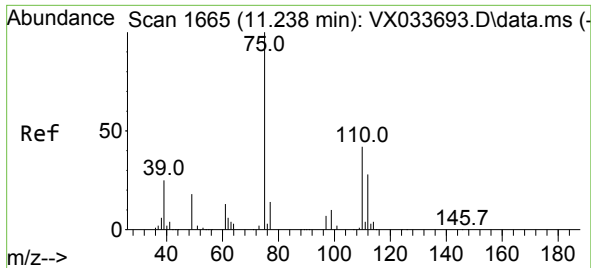
Tgt Ion: 105 Resp: 39
 Ion Ratio Lower Upper
 105 100
 120 0.0 13.6 40.8#



#75
 1,1,2,2-Tetrachloroethane
 Concen: Below Cal
 RT: 11.085 min Scan# 1640
 Delta R.T. -0.128 min
 Lab File: VX033908.D
 Acq: 26 Jan 2023 14:46

Tgt Ion: 83 Resp: 20
 Ion Ratio Lower Upper
 83 100
 131 585.0 5.5 16.7#
 85 0.0 32.3 96.9#

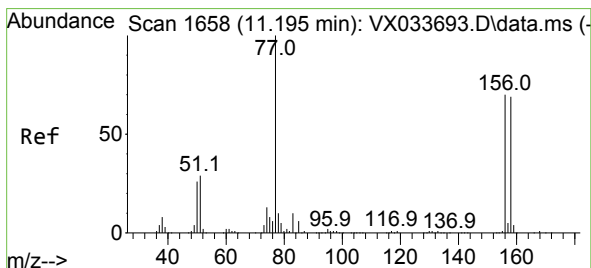
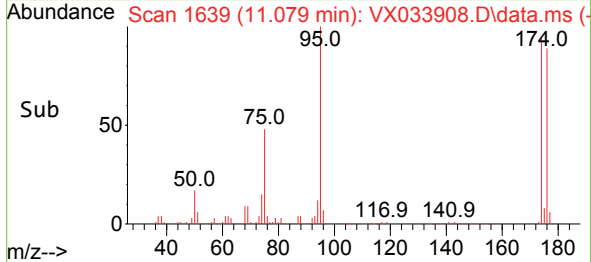
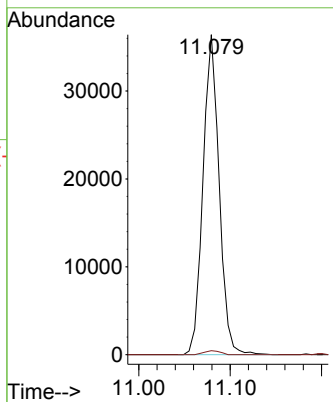
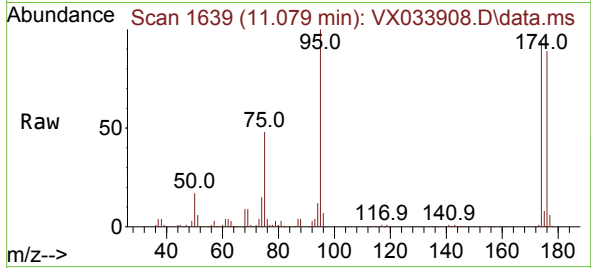




#76
 1,2,3-Trichloropropane
 Concen: 23.318 ug/l
 RT: 11.079 min Scan# 1639
 Delta R.T. -0.158 min
 Lab File: VX033908.D
 Acq: 26 Jan 2023 14:46

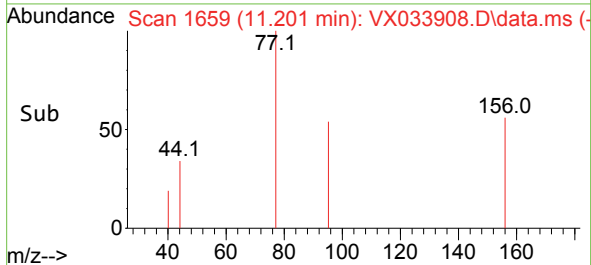
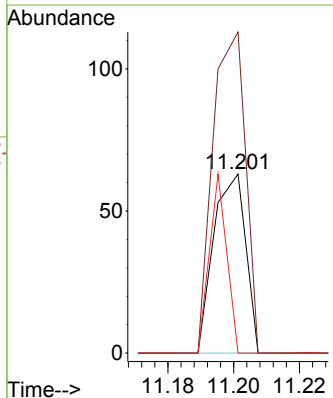
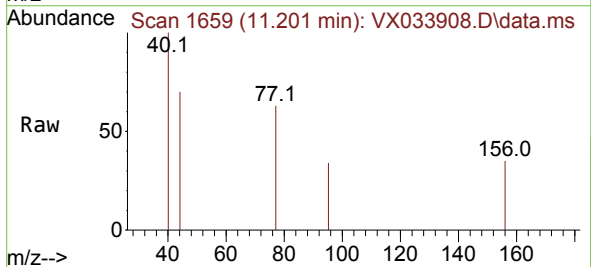
Instrument : MSVOA_X
 ClientSampleId : EB-01

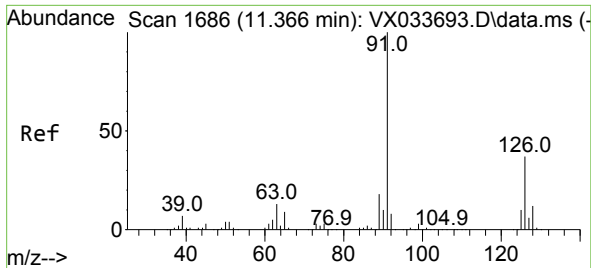
Tgt Ion: 75 Resp: 44593
 Ion Ratio Lower Upper
 75 100
 77 1.2 21.8 65.4#



#77
 Bromobenzene
 Concen: Below Cal
 RT: 11.201 min Scan# 1659
 Delta R.T. 0.006 min
 Lab File: VX033908.D
 Acq: 26 Jan 2023 14:46

Tgt Ion:156 Resp: 42
 Ion Ratio Lower Upper
 156 100
 77 185.7 68.1 204.3
 158 54.8 48.0 144.2

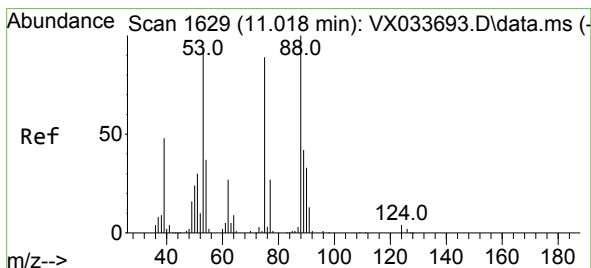
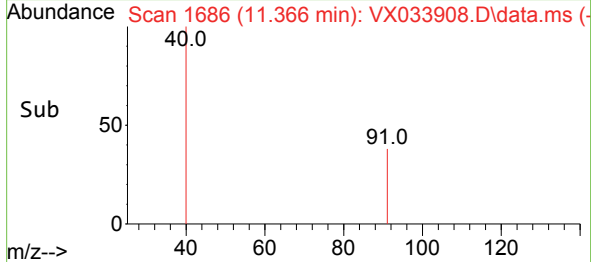
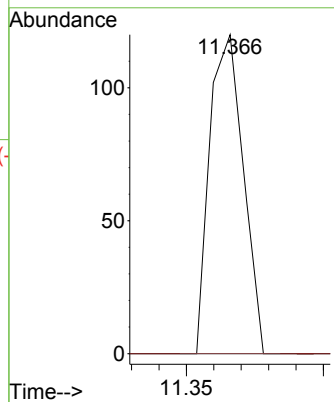
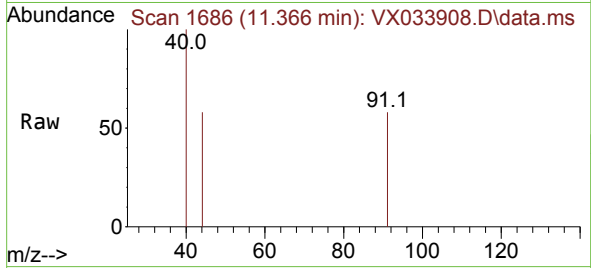




#79
 2-Chlorotoluene
 Concen: Below Cal
 RT: 11.366 min Scan# 1686
 Delta R.T. -0.000 min
 Lab File: VX033908.D
 Acq: 26 Jan 2023 14:46

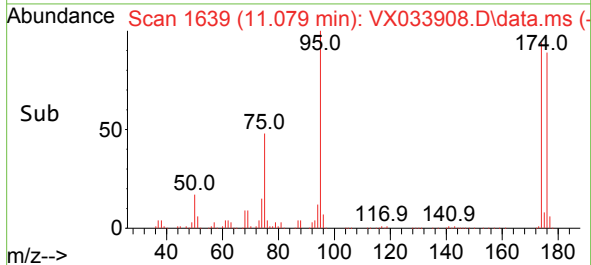
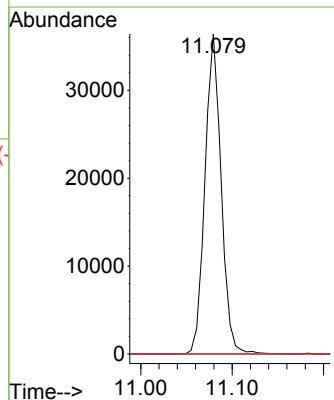
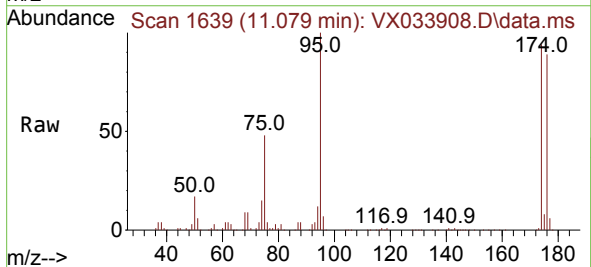
Instrument : MSVOA_X
 ClientSampleId : EB-01

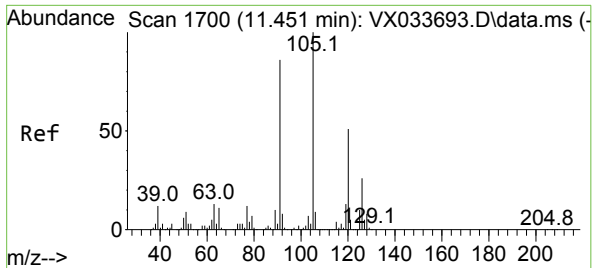
Tgt Ion: 91 Resp: 102
 Ion Ratio Lower Upper
 91 100
 126 0.0 18.1 54.1#



#81
 trans-1,4-Dichloro-2-butene
 Concen: 72.470 ug/l
 RT: 11.079 min Scan# 1639
 Delta R.T. 0.061 min
 Lab File: VX033908.D
 Acq: 26 Jan 2023 14:46

Tgt Ion: 75 Resp: 44593
 Ion Ratio Lower Upper
 75 100
 53 0.0 83.0 124.6#
 89 0.0 37.7 56.5#





#82
 4-Chlorotoluene
 Concen: Below Cal
 RT: 11.457 min Scan# 1
 Delta R.T. 0.006 min
 Lab File: VX033908.D
 Acq: 26 Jan 2023 14:46

Instrument : MSVOA_X
 ClientSampleId : EB-01

Tgt Ion: 91 Resp: 240

Ion	Ratio	Lower	Upper
91	100		
126	0.0	15.8	47.4#

