

Data Path : Z:\voasrv\HPCHEM1\MSVOA\_X\Data\VX012721\  
 Data File : VX020779.D  
 Acq On : 27 Jan 2021 18:48  
 Operator : JC/SP  
 Sample : M1189-20  
 Misc : 5.0mL/MSVOA\_X/WATER  
 ALS Vial : 13 Sample Multiplier: 1

Instrument :  
 MSVOA\_X  
 ClientSampled :

Quant Time: Jan 28 00:46:50 2021  
 Quant Method : Z:\VOASRV\HPCHEM1\MSVOA\_X\METHOD\82X012521W.M  
 Quant Title : SW846 8260  
 QLast Update : Mon Jan 25 13:38:15 2021  
 Response via : Initial Calibration

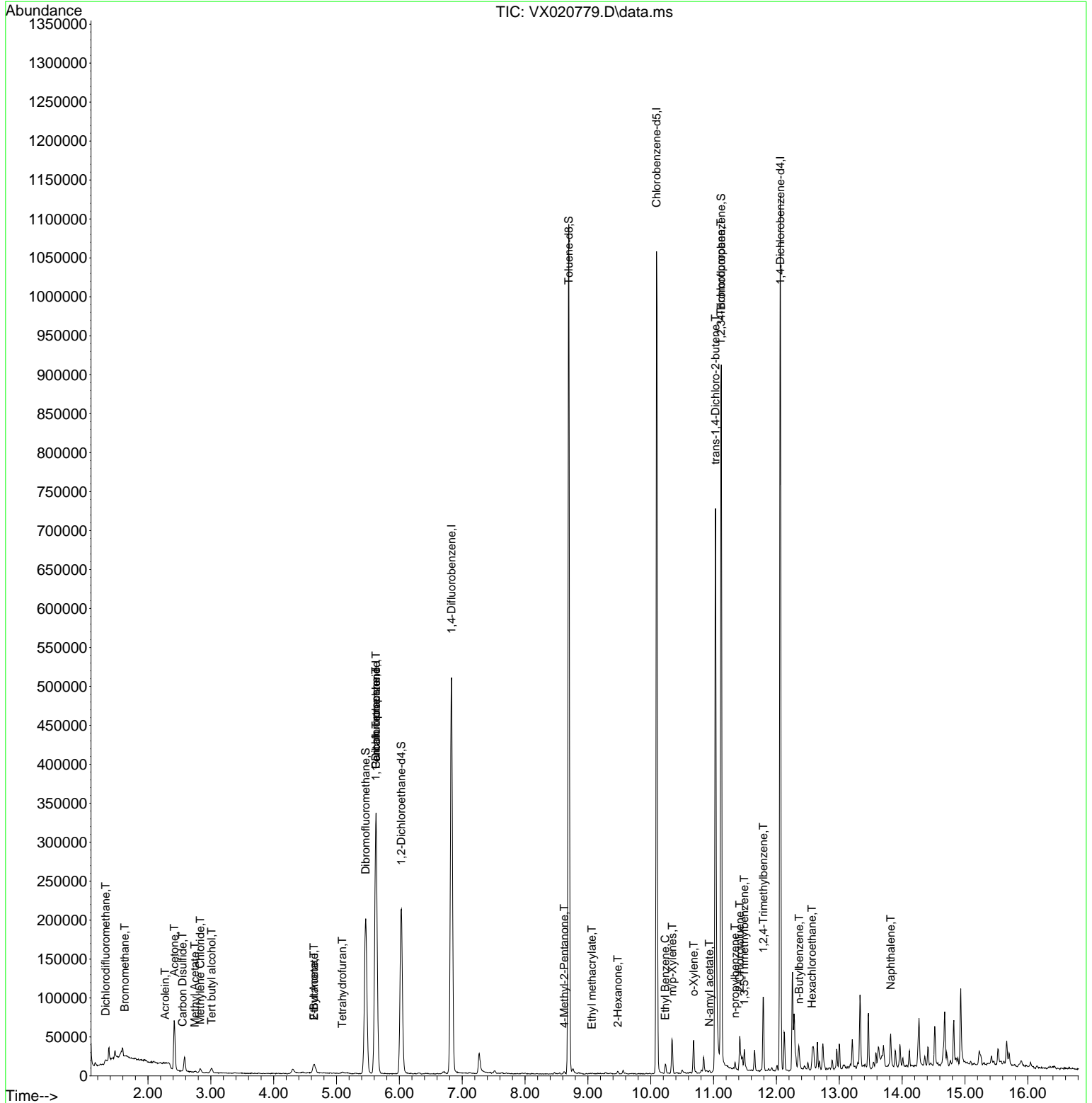
Compound	R.T.	QIon	Response	Conc	Units	Dev(Min)
-----						
Internal Standards						
1) Pentafluorobenzene	5.629	168	305566	50.00	ug/l	0.00
34) 1,4-Difluorobenzene	6.830	114	520223	50.00	ug/l	0.00
63) Chlorobenzene-d5	10.092	117	489166	50.00	ug/l	0.00
72) 1,4-Dichlorobenzene-d4	12.061	152	228823	50.00	ug/l	0.00
System Monitoring Compounds						
33) 1,2-Dichloroethane-d4	6.032	65	206602	49.57	ug/l	0.00
Spiked Amount	50.000	Range 61 - 141	Recovery	=	99.14%	
35) Dibromofluoromethane	5.465	113	171868	48.23	ug/l	0.00
Spiked Amount	50.000	Range 69 - 133	Recovery	=	96.46%	
50) Toluene-d8	8.696	98	646759	49.51	ug/l	0.00
Spiked Amount	50.000	Range 65 - 126	Recovery	=	99.02%	
62) 4-Bromofluorobenzene	11.122	95	255620	50.38	ug/l	0.00
Spiked Amount	50.000	Range 58 - 135	Recovery	=	100.76%	
Target Compounds						
						Qvalue
2) Dichlorodifluoromethane	1.325	85	29	1.20	ug/l #	42
5) Bromomethane	1.630	94	469	0.23	ug/l #	61
11) Tert butyl alcohol	3.014	59	6871	8.83	ug/l #	81
13) Acrolein	2.270	56	1833	3.12	ug/l #	31
16) Acetone	2.416	43	66379	42.01	ug/l	100
17) Carbon Disulfide	2.550	76	1109	1.02	ug/l	95
18) Methyl Acetate	2.746	43	1737	0.43	ug/l	97
20) Methylene Chloride	2.831	84	2176	0.55	ug/l #	91
25) 2-Butanone	4.642	43	15580	6.29	ug/l	93
29) Tetrahydrofuran	5.093	42	1180	0.74	ug/l #	55
36) 1,1-Dichloropropene	5.623	75	24221	4.64	ug/l #	48
37) Ethyl Acetate	4.642	43	15580	3.15	ug/l #	66
38) Carbon Tetrachloride	5.629	117	31295	5.70	ug/l #	16
51) 4-Methyl-2-Pentanone	8.623	43	2476	0.50	ug/l #	83
56) Ethyl methacrylate	9.061	69	140	2.80	ug/l #	30
59) 2-Hexanone	9.476	43	1694	0.46	ug/l	97
67) Ethyl Benzene	10.232	91	6855	0.37	ug/l #	89
68) m/p-Xylenes	10.342	106	11516	1.68	ug/l	91
69) o-Xylene	10.683	106	9400	1.46	ug/l	98
74) N-amyl acetate	10.933	43	1247	2.19	ug/l #	43
76) 1,2,3-Trichloropropane	11.116	75	125560	23.66	ug/l #	39
78) n-propylbenzene	11.342	91	4797	0.25	ug/l	99
79) 2-Chlorotoluene	11.415	91	3933	0.34	ug/l #	41
80) 1,3,5-Trimethylbenzene	11.488	105	11055	0.78	ug/l	99
81) trans-1,4-Dichloro-2-b...	11.031	75	35126	18.55	ug/l #	26
84) 1,2,4-Trimethylbenzene	11.793	105	43004	3.02	ug/l	98
89) n-Butylbenzene	12.360	91	4029	0.31	ug/l #	24
90) Hexachloroethane	12.567	117	1617	0.61	ug/l #	9
95) Naphthalene	13.817	128	26507	4.30	ug/l	97
-----						

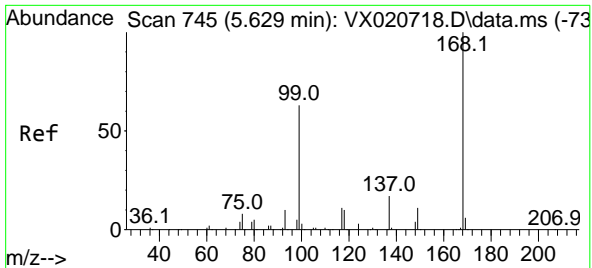
(#) = qualifier out of range (m) = manual integration (+) = signals summed

Data Path : Z:\voasrv\HPCHEM1\MSVOA\_X\Data\VX012721\  
 Data File : VX020779.D  
 Acq On : 27 Jan 2021 18:48  
 Operator : JC/SP  
 Sample : M1189-20  
 Misc : 5.0mL/MSVOA\_X/WATER  
 ALS Vial : 13 Sample Multiplier: 1

Instrument :  
 MSVOA\_X  
 Client Sampled :

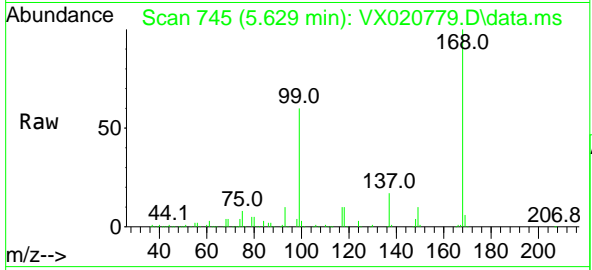
Quant Time: Jan 28 00:46:50 2021  
 Quant Method : Z:\VOASRV\HPCHEM1\MSVOA\_X\METHOD\82X012521W.M  
 Quant Title : SW846 8260  
 QLast Update : Mon Jan 25 13:38:15 2021  
 Response via : Initial Calibration



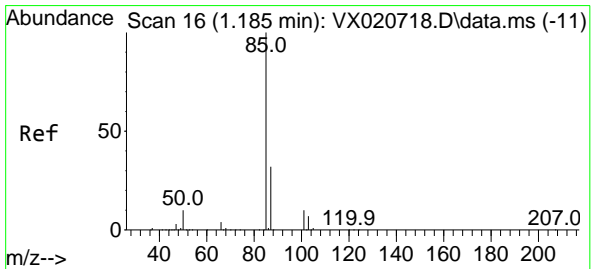
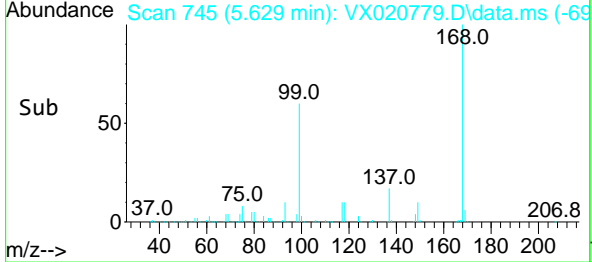
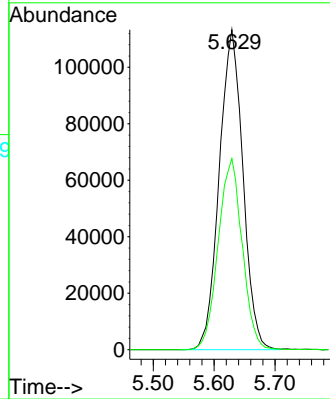


#1  
 Pentafluorobenzene  
 Concen: 50.00 ug/l  
 RT: 5.629 min Scan# 745  
 Delta R.T. 0.000 min  
 Lab File: VX020779.D  
 Acq: 27 Jan 2021 18:48

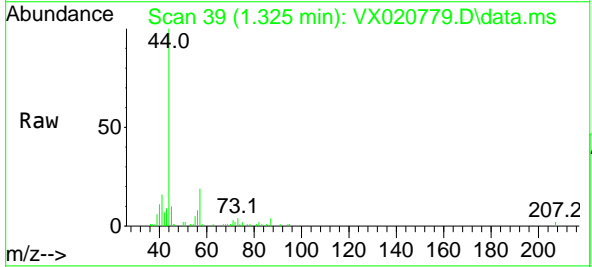
Instrument :  
 MSVOA\_X  
 ClientSampled :



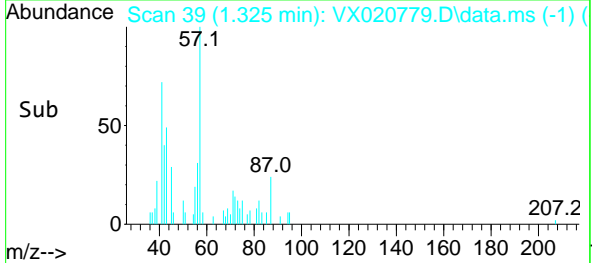
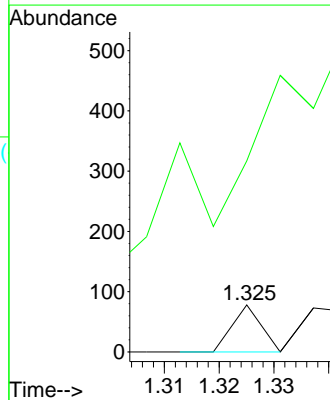
Tgt Ion:168 Resp: 305566  
 Ion Ratio Lower Upper  
 168 100  
 99 59.7 45.8 68.6

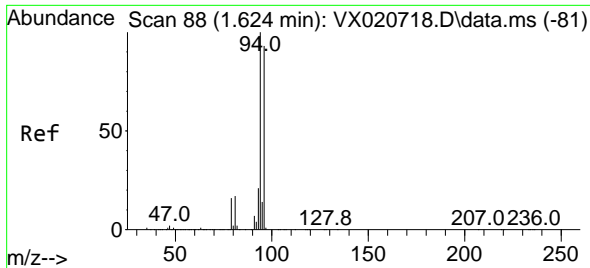


#2  
 Dichlorodifluoromethane  
 Concen: 1.20 ug/l  
 RT: 1.325 min Scan# 39  
 Delta R.T. 0.140 min  
 Lab File: VX020779.D  
 Acq: 27 Jan 2021 18:48



Tgt Ion: 85 Resp: 29  
 Ion Ratio Lower Upper  
 85 100  
 87 0.0 16.4 49.2#

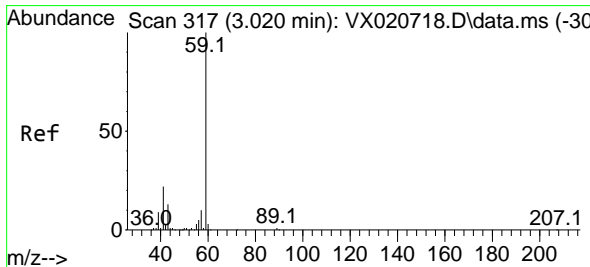
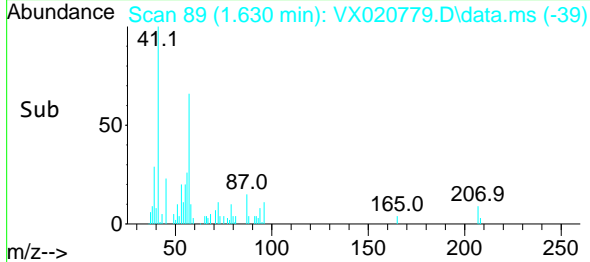
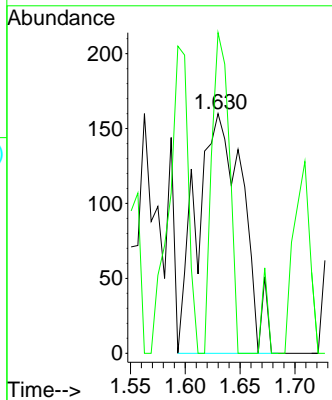
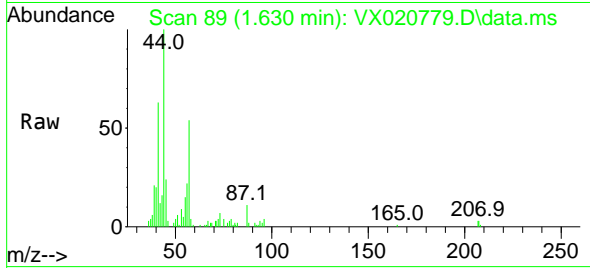




#5  
 Bromomethane  
 Concen: 0.23 ug/l  
 RT: 1.630 min Scan# 89  
 Delta R.T. 0.006 min  
 Lab File: VX020779.D  
 Acq: 27 Jan 2021 18:48

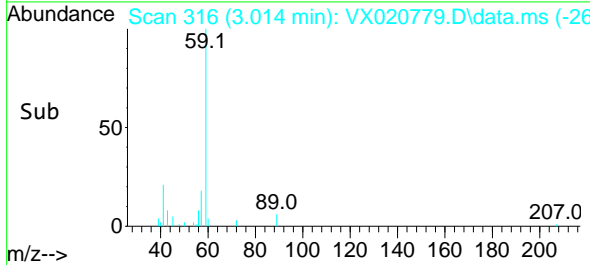
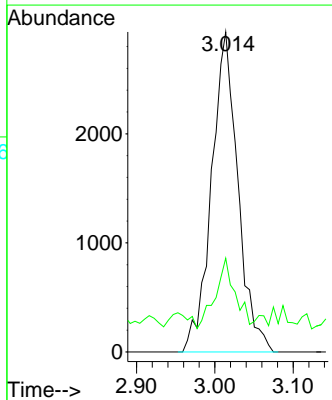
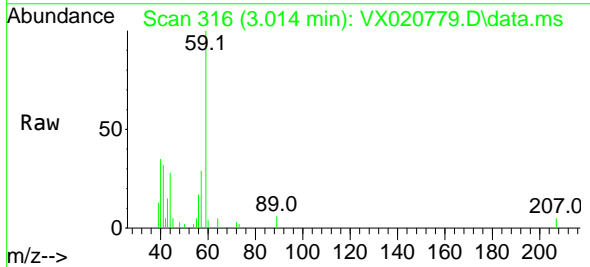
Instrument : MSVOA\_X  
 Client Sampled :

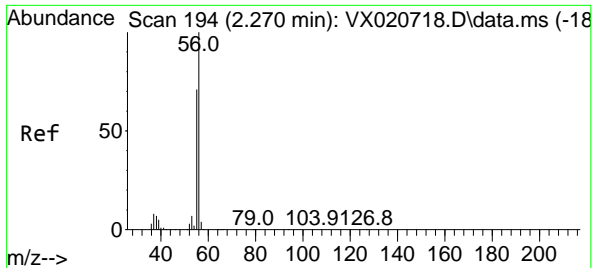
Tgt Ion: 94 Resp: 469  
 Ion Ratio Lower Upper  
 94 100  
 96 133.8 76.4 114.6#



#11  
 Tert butyl alcohol  
 Concen: 8.83 ug/l  
 RT: 3.014 min Scan# 316  
 Delta R.T. -0.006 min  
 Lab File: VX020779.D  
 Acq: 27 Jan 2021 18:48

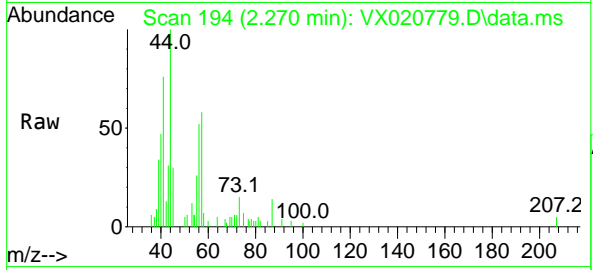
Tgt Ion: 59 Resp: 6871  
 Ion Ratio Lower Upper  
 59 100  
 57 16.8 7.8 11.8#



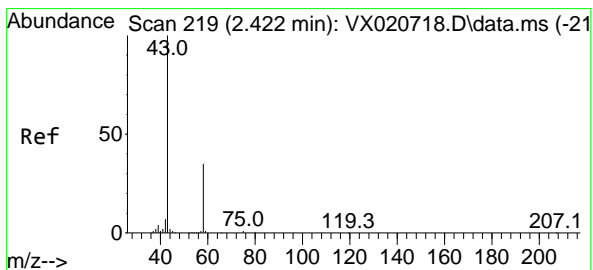
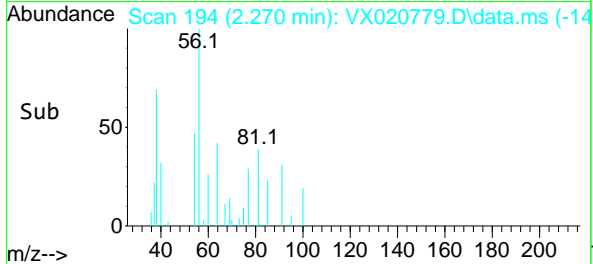
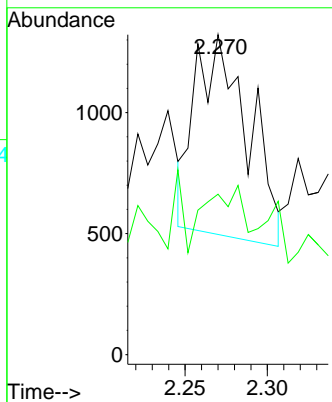


#13  
 Acrolein  
 Concen: 3.12 ug/l  
 RT: 2.270 min Scan# 194  
 Delta R.T. -0.000 min  
 Lab File: VX020779.D  
 Acq: 27 Jan 2021 18:48

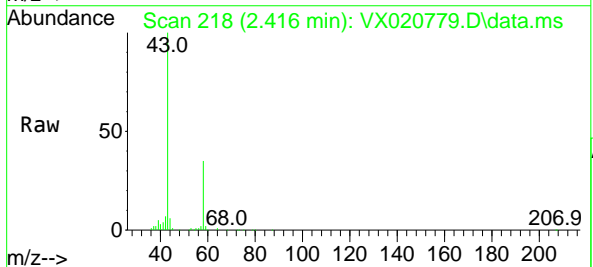
Instrument : MSVOA\_X  
 ClientSampled :



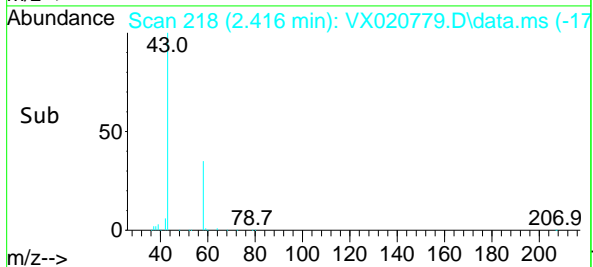
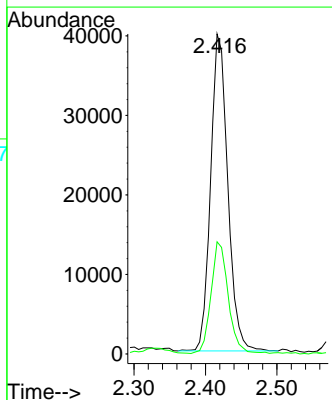
Tgt Ion: 56 Resp: 1833  
 Ion Ratio Lower Upper  
 56 100  
 55 14.1 56.4 84.6#

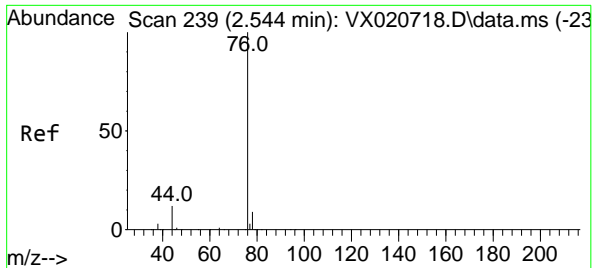


#16  
 Acetone  
 Concen: 42.01 ug/l  
 RT: 2.416 min Scan# 218  
 Delta R.T. -0.006 min  
 Lab File: VX020779.D  
 Acq: 27 Jan 2021 18:48



Tgt Ion: 43 Resp: 66379  
 Ion Ratio Lower Upper  
 43 100  
 58 35.0 27.8 41.8

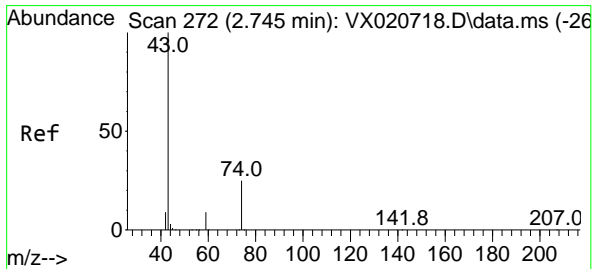
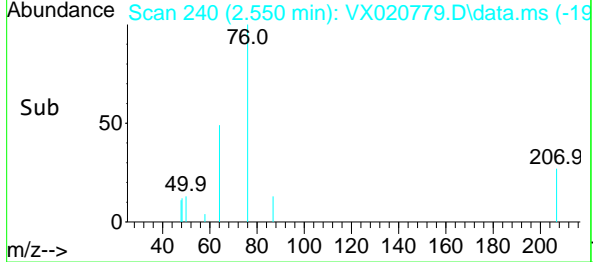
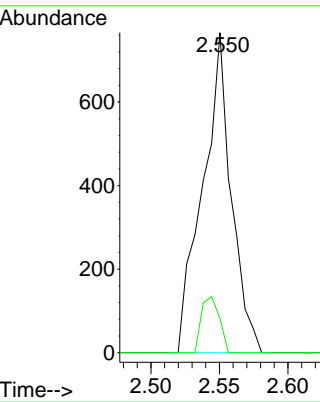
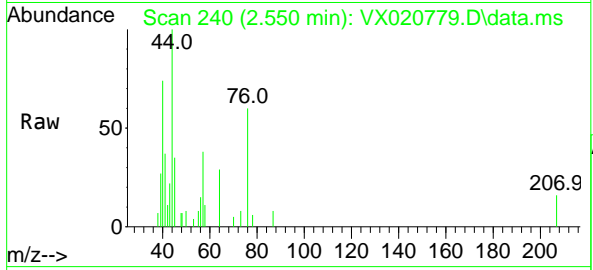




#17  
 Carbon Disulfide  
 Concen: 1.02 ug/l  
 RT: 2.550 min Scan# 240  
 Delta R.T. 0.006 min  
 Lab File: VX020779.D  
 Acq: 27 Jan 2021 18:48

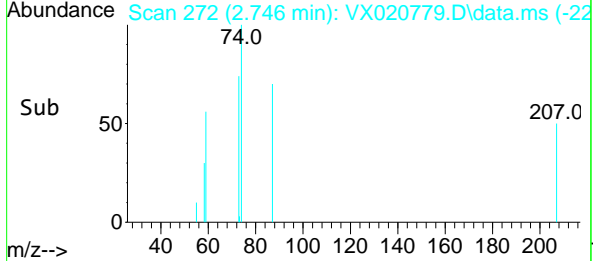
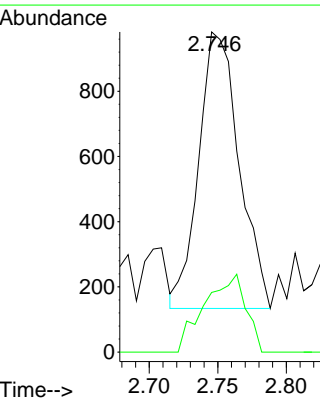
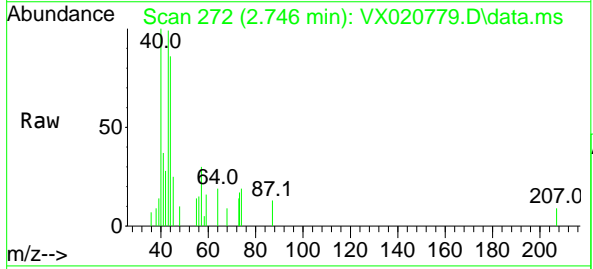
Instrument :  
 MSVOA\_X  
 ClientSampled :

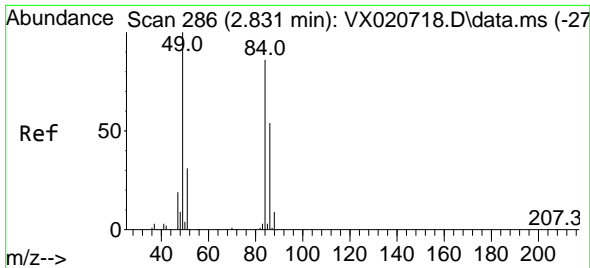
Tgt Ion: 76 Resp: 1109  
 Ion Ratio Lower Upper  
 76 100  
 78 10.7 7.2 10.8



#18  
 Methyl Acetate  
 Concen: 0.43 ug/l  
 RT: 2.746 min Scan# 272  
 Delta R.T. 0.001 min  
 Lab File: VX020779.D  
 Acq: 27 Jan 2021 18:48

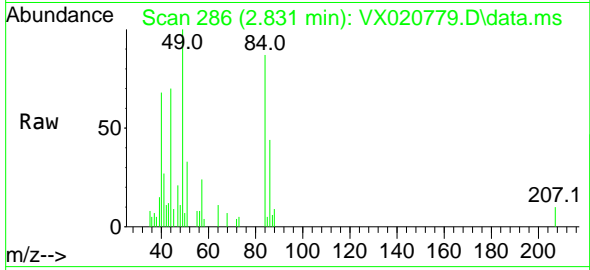
Tgt Ion: 43 Resp: 1737  
 Ion Ratio Lower Upper  
 43 100  
 74 28.8 21.9 32.9





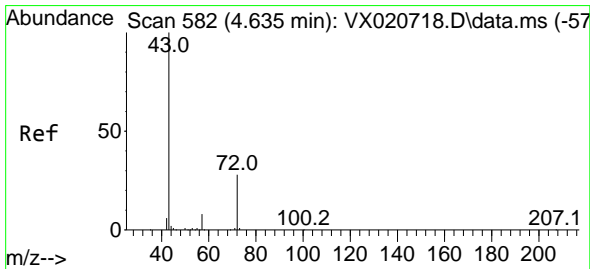
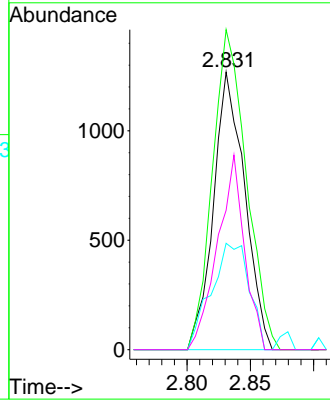
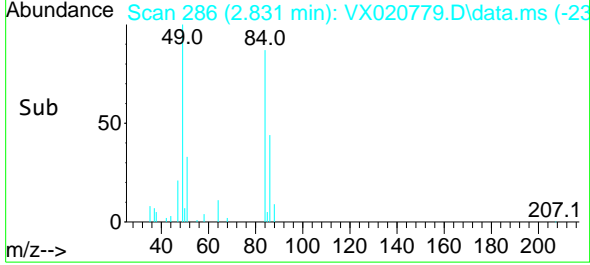
#20  
 Methylene Chloride  
 Concen: 0.55 ug/l  
 RT: 2.831 min Scan# 286  
 Delta R.T. -0.000 min  
 Lab File: VX020779.D  
 Acq: 27 Jan 2021 18:48

Instrument :  
 MSVOA\_X  
 ClientSampled :

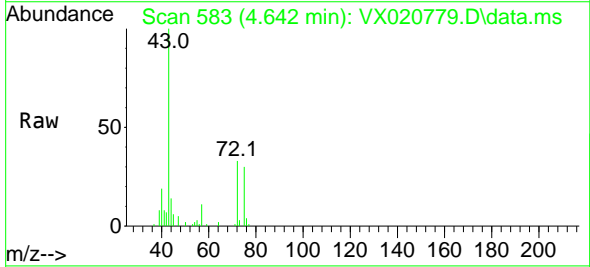


Tgt Ion: 84 Resp: 2176

Ion	Ratio	Lower	Upper
84	100		
49	115.3	88.6	132.8
51	38.3	27.0	40.6
86	50.2	50.3	75.5#

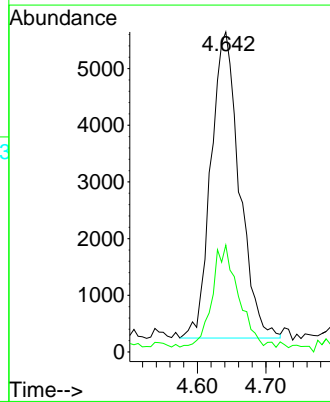
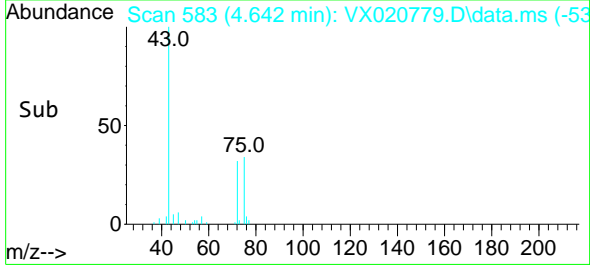


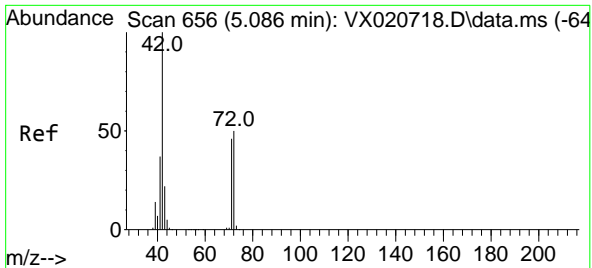
#25  
 2-Butanone  
 Concen: 6.29 ug/l  
 RT: 4.642 min Scan# 583  
 Delta R.T. 0.007 min  
 Lab File: VX020779.D  
 Acq: 27 Jan 2021 18:48



Tgt Ion: 43 Resp: 15580

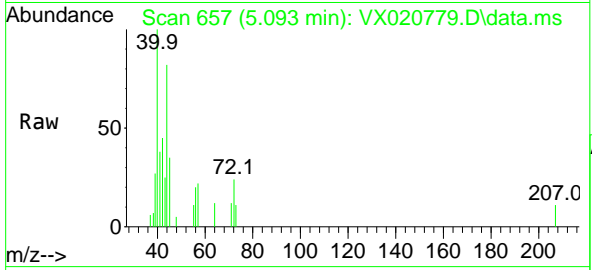
Ion	Ratio	Lower	Upper
43	100		
72	33.3	23.7	35.5





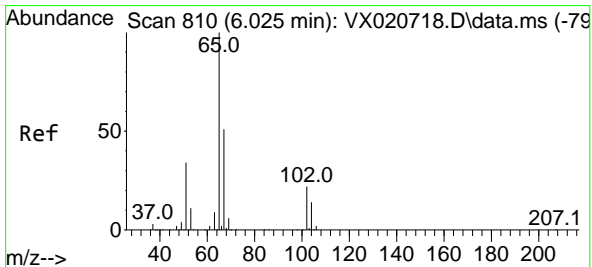
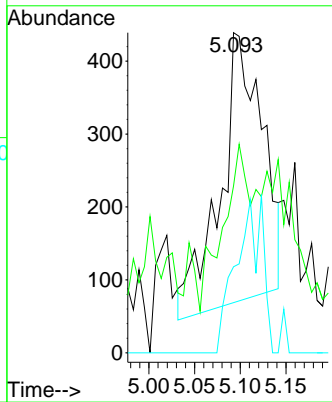
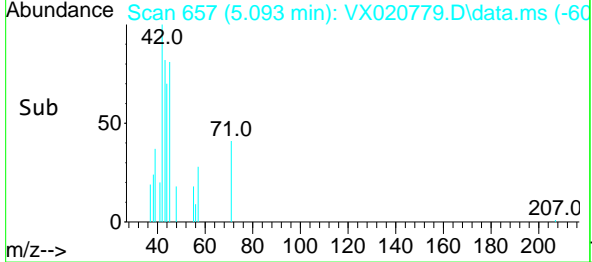
#29  
 Tetrahydrofuran  
 Concen: 0.74 ug/l  
 RT: 5.093 min Scan# 657  
 Delta R.T. 0.007 min  
 Lab File: VX020779.D  
 Acq: 27 Jan 2021 18:48

Instrument :  
 MSVOA\_X  
 ClientSampled :

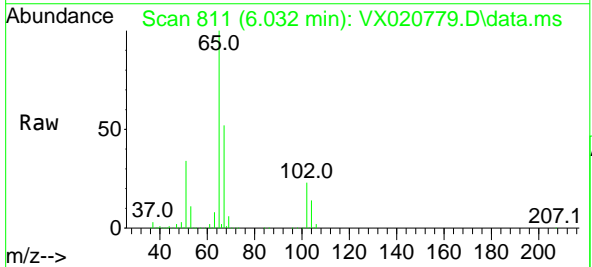


Tgt Ion: 42 Resp: 1180

Ion	Ratio	Lower	Upper
42	100		
72	37.6	41.7	62.5#
71	0.0	38.4	57.6#

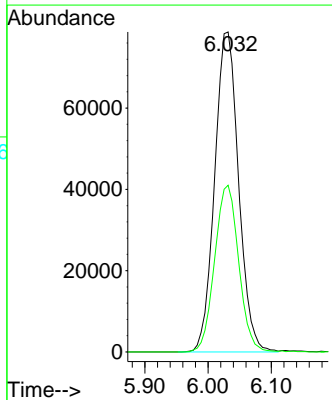
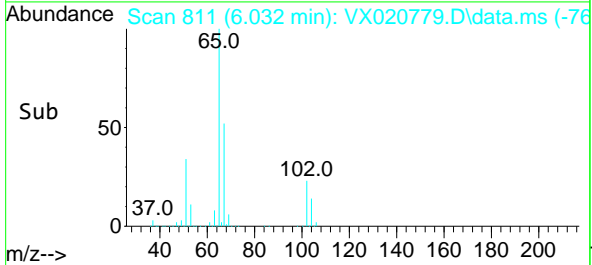


#33  
 1,2-Dichloroethane-d4  
 Concen: 49.57 ug/l  
 RT: 6.032 min Scan# 811  
 Delta R.T. 0.006 min  
 Lab File: VX020779.D  
 Acq: 27 Jan 2021 18:48

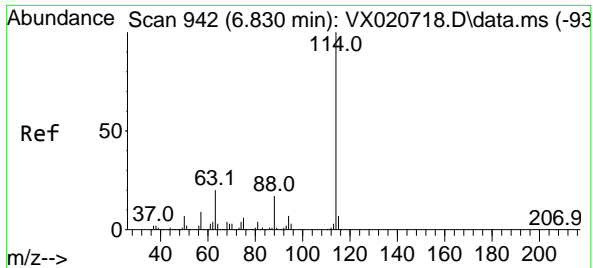


Tgt Ion: 65 Resp: 206602

Ion	Ratio	Lower	Upper
65	100		
67	52.3	0.0	105.4

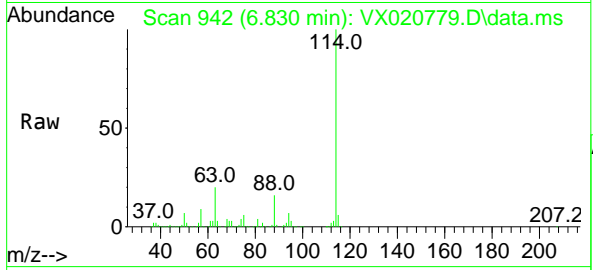






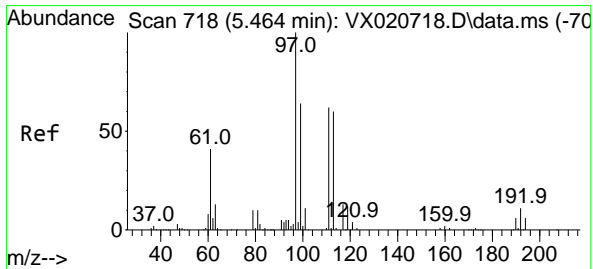
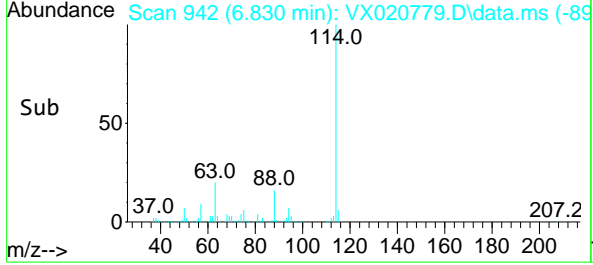
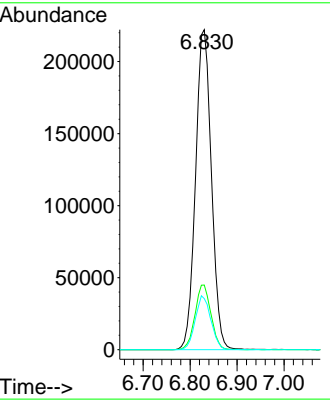
#34  
 1,4-Difluorobenzene  
 Concen: 50.00 ug/l  
 RT: 6.830 min Scan# 942  
 Delta R.T. 0.000 min  
 Lab File: VX020779.D  
 Acq: 27 Jan 2021 18:48

Instrument :  
 MSVOA\_X  
 ClientSampled :

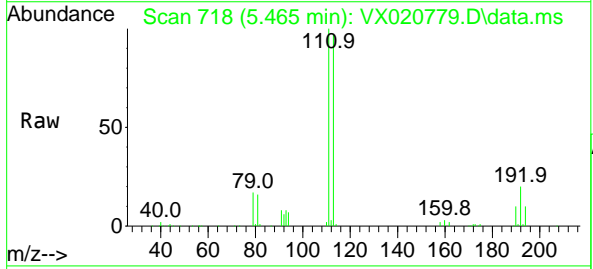


Tgt Ion:114 Resp: 520223

Ion	Ratio	Lower	Upper
114	100		
63	20.2	0.0	40.8
88	15.9	0.0	32.8

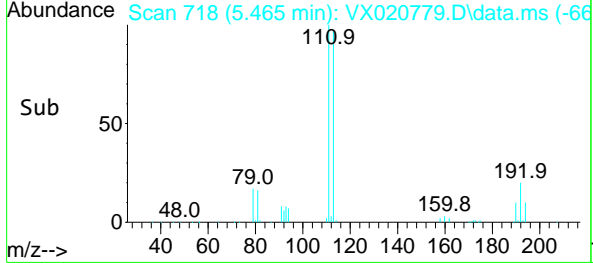
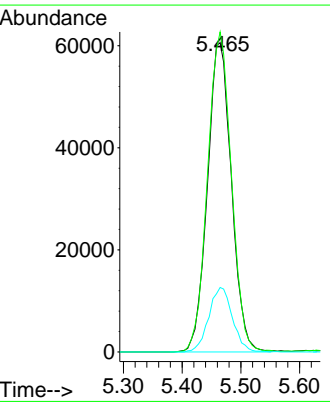


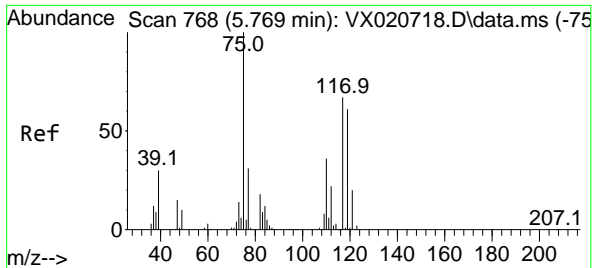
#35  
 Dibromofluoromethane  
 Concen: 48.23 ug/l  
 RT: 5.465 min Scan# 718  
 Delta R.T. 0.001 min  
 Lab File: VX020779.D  
 Acq: 27 Jan 2021 18:48



Tgt Ion:113 Resp: 171868

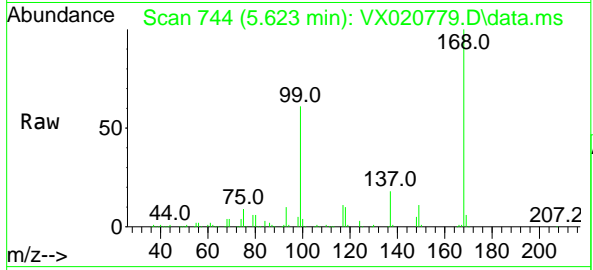
Ion	Ratio	Lower	Upper
113	100		
111	102.9	81.9	122.9
192	20.6	16.7	25.1





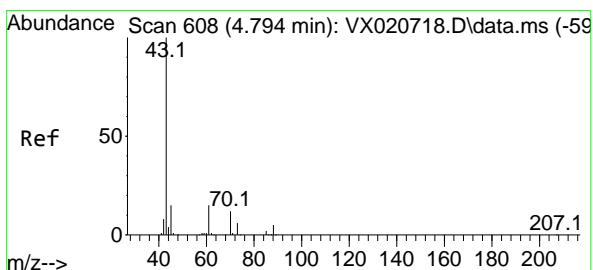
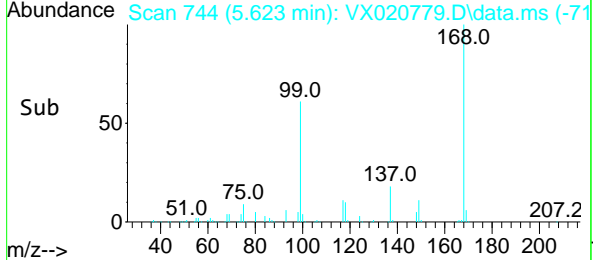
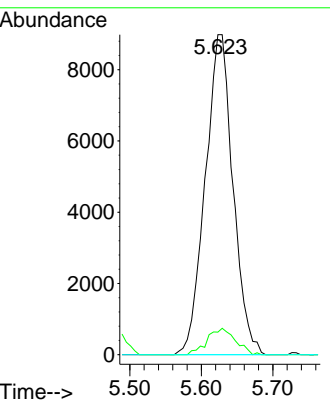
#36  
 1,1-Dichloropropene  
 Concen: 4.64 ug/l  
 RT: 5.623 min Scan# 744  
 Delta R.T. -0.146 min  
 Lab File: VX020779.D  
 Acq: 27 Jan 2021 18:48

Instrument :  
 MSVOA\_X  
 ClientSampled :

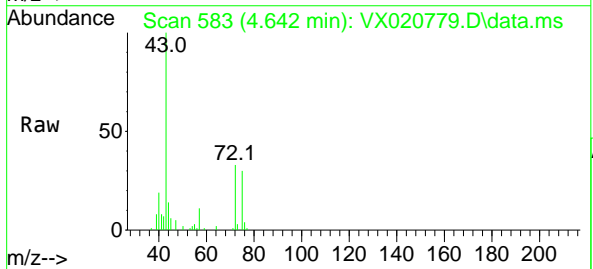


Tgt Ion: 75 Resp: 24221

Ion	Ratio	Lower	Upper
75	100		
110	8.4	18.1	54.4#
77	0.0	25.3	37.9#

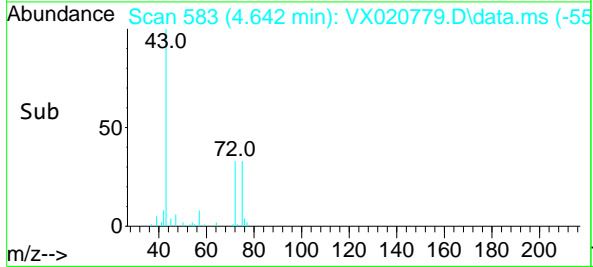
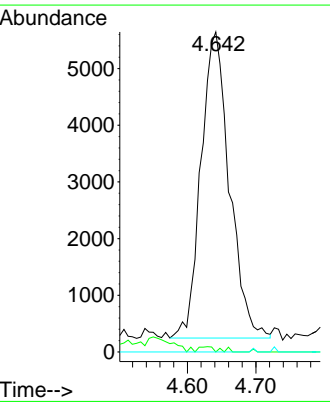


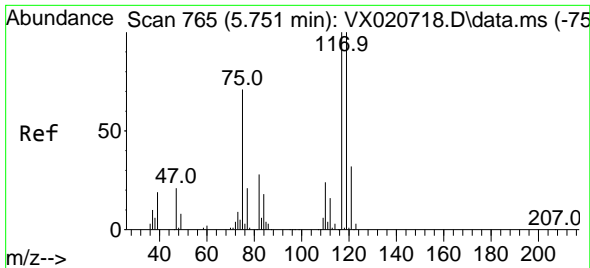
#37  
 Ethyl Acetate  
 Concen: 3.15 ug/l  
 RT: 4.642 min Scan# 583  
 Delta R.T. -0.152 min  
 Lab File: VX020779.D  
 Acq: 27 Jan 2021 18:48



Tgt Ion: 43 Resp: 15580

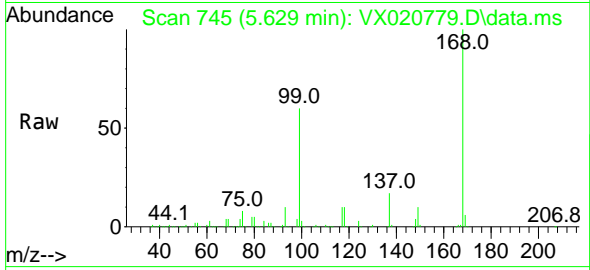
Ion	Ratio	Lower	Upper
43	100		
61	0.8	12.8	19.2#
70	0.0	10.5	15.7#



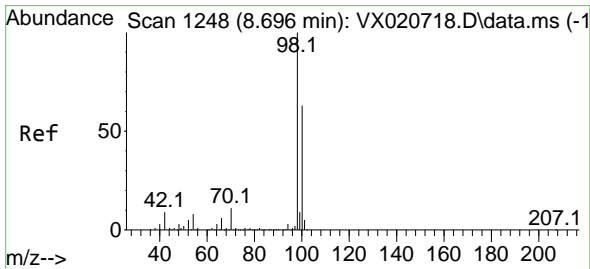
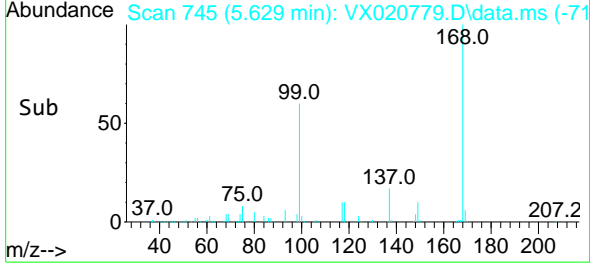
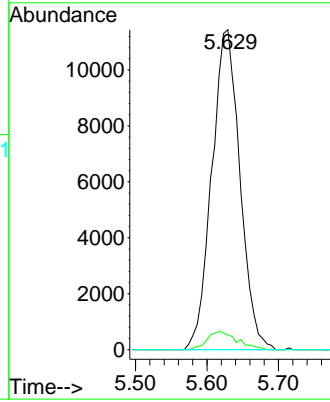


#38  
 Carbon Tetrachloride  
 Concen: 5.70 ug/l  
 RT: 5.629 min Scan# 745  
 Delta R.T. -0.122 min  
 Lab File: VX020779.D  
 Acq: 27 Jan 2021 18:48

Instrument :  
 MSVOA\_X  
 ClientSampled :

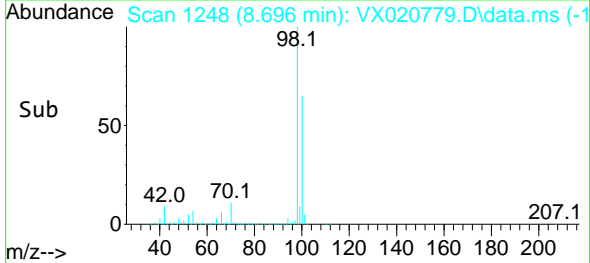
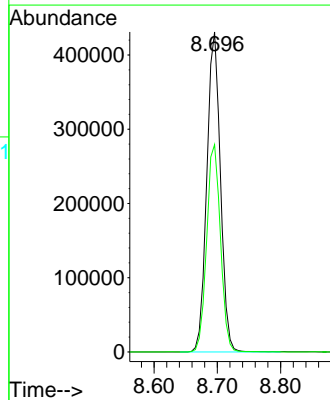
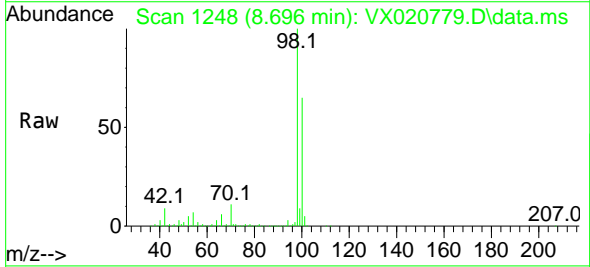


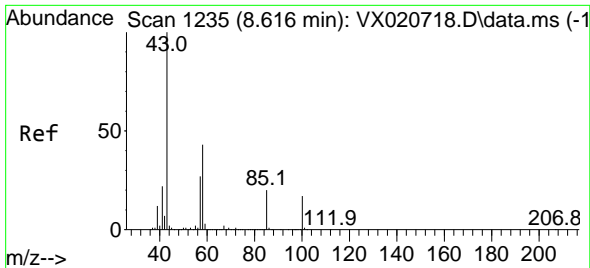
Tgt Ion: 117 Resp: 31295  
 Ion Ratio Lower Upper  
 117 100  
 119 4.6 76.2 114.2#  
 121 0.0 24.8 37.2#



#50  
 Toluene-d8  
 Concen: 49.51 ug/l  
 RT: 8.696 min Scan# 1248  
 Delta R.T. -0.000 min  
 Lab File: VX020779.D  
 Acq: 27 Jan 2021 18:48

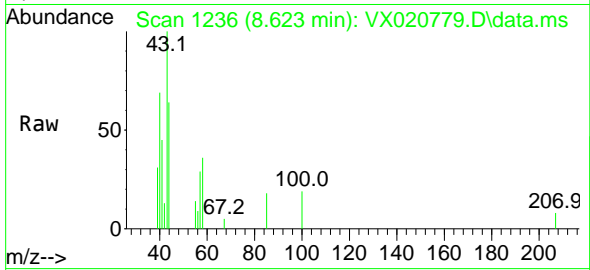
Tgt Ion: 98 Resp: 646759  
 Ion Ratio Lower Upper  
 98 100  
 100 65.7 51.9 77.9



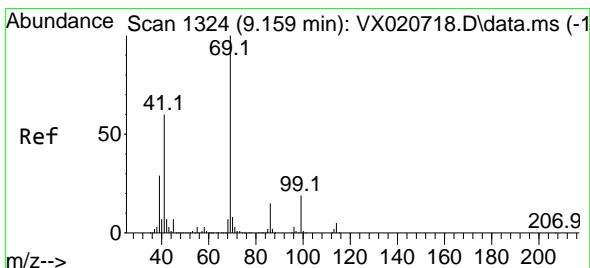
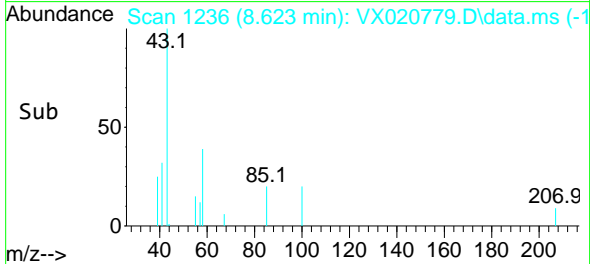
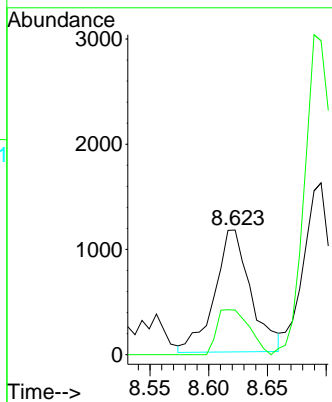


#51  
 4-Methyl-2-Pentanone  
 Concen: 0.50 ug/l  
 RT: 8.623 min Scan# 1236  
 Delta R.T. 0.007 min  
 Lab File: VX020779.D  
 Acq: 27 Jan 2021 18:48

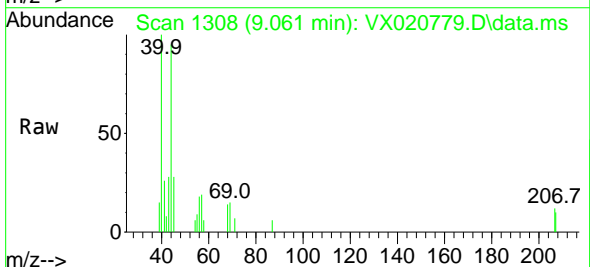
Instrument :  
 MSVOA\_X  
 ClientSampled :



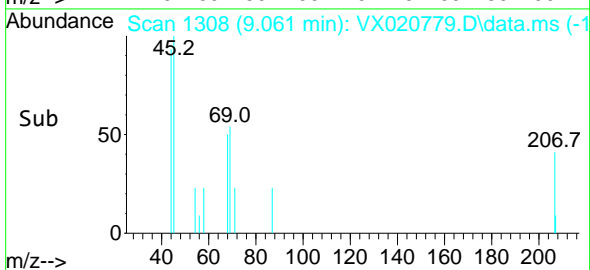
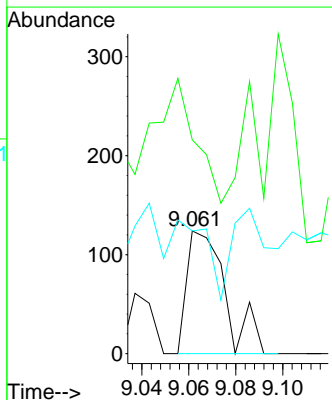
Tgt Ion: 43 Resp: 2476  
 Ion Ratio Lower Upper  
 43 100  
 58 33.2 35.4 53.0#

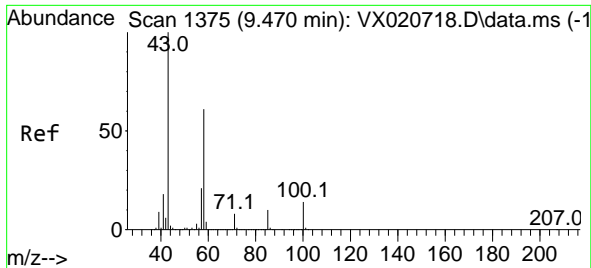


#56  
 Ethyl methacrylate  
 Concen: 2.80 ug/l  
 RT: 9.061 min Scan# 1308  
 Delta R.T. -0.098 min  
 Lab File: VX020779.D  
 Acq: 27 Jan 2021 18:48



Tgt Ion: 69 Resp: 140  
 Ion Ratio Lower Upper  
 69 100  
 41 116.4 46.8 70.2#  
 39 0.0 24.7 37.1#

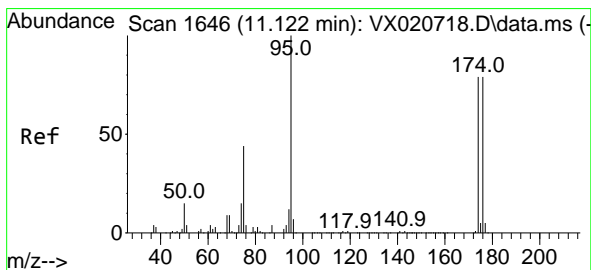
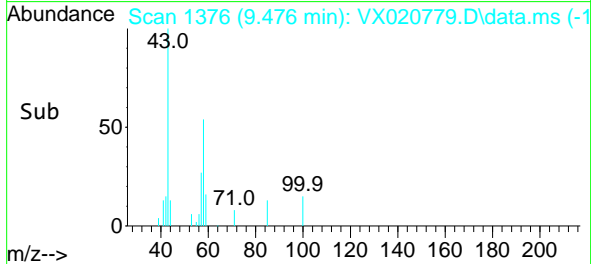
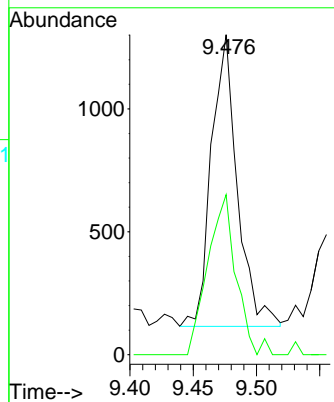
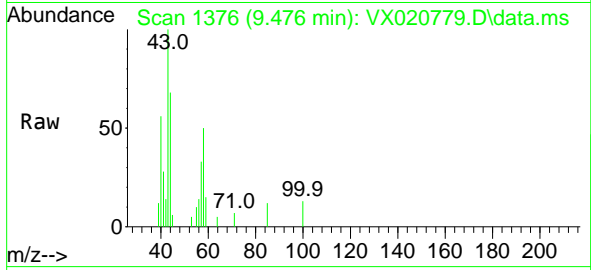




#59  
 2-Hexanone  
 Concen: 0.46 ug/l  
 RT: 9.476 min Scan# 1376  
 Delta R.T. 0.006 min  
 Lab File: VX020779.D  
 Acq: 27 Jan 2021 18:48

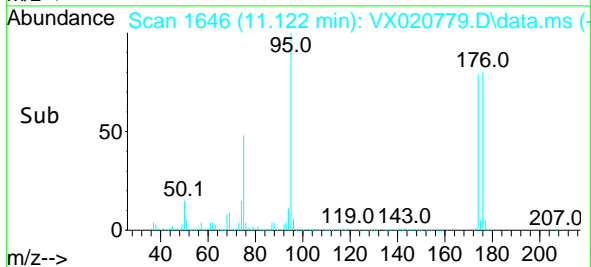
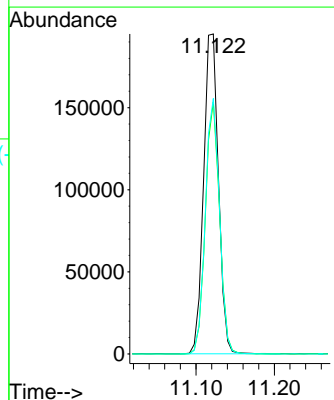
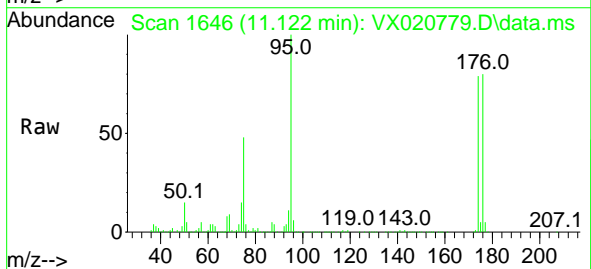
Instrument :  
 MSVOA\_X  
 ClientSampled :

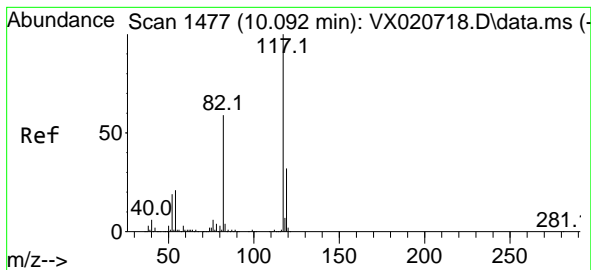
Tgt Ion: 43 Resp: 1694  
 Ion Ratio Lower Upper  
 43 100  
 58 60.0 30.9 92.8



#62  
 4-Bromofluorobenzene  
 Concen: 50.38 ug/l  
 RT: 11.122 min Scan# 1646  
 Delta R.T. 0.000 min  
 Lab File: VX020779.D  
 Acq: 27 Jan 2021 18:48

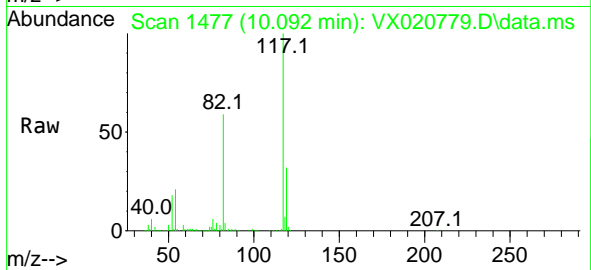
Tgt Ion: 95 Resp: 255620  
 Ion Ratio Lower Upper  
 95 100  
 174 75.2 0.0 154.6  
 176 76.5 0.0 155.8





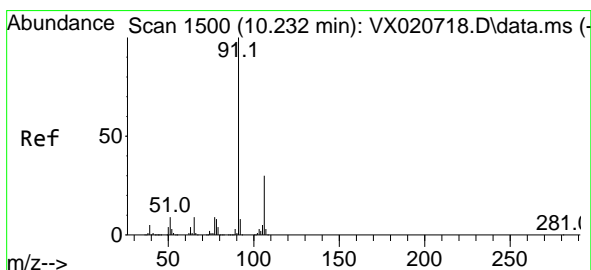
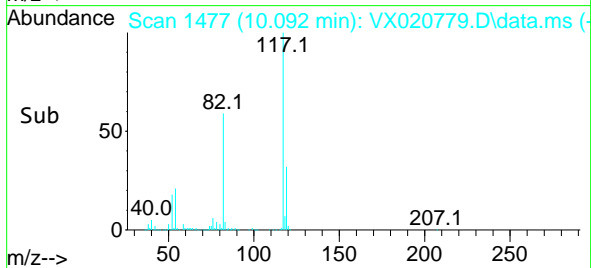
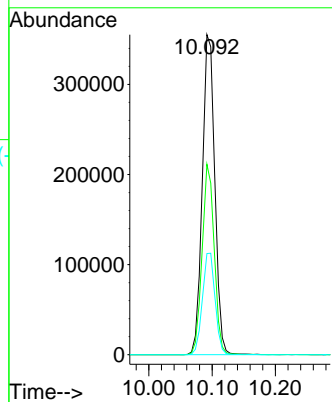
#63  
 Chlorobenzene-d5  
 Concen: 50.00 ug/l  
 RT: 10.092 min Scan# 1477  
 Delta R.T. -0.000 min  
 Lab File: VX020779.D  
 Acq: 27 Jan 2021 18:48

Instrument :  
 MSVOA\_X  
 ClientSampled :

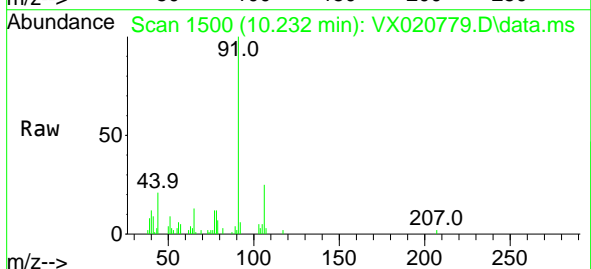


Tgt Ion:117 Resp: 489166

Ion	Ratio	Lower	Upper
117	100		
82	59.5	47.4	71.2
119	31.6	26.6	39.8

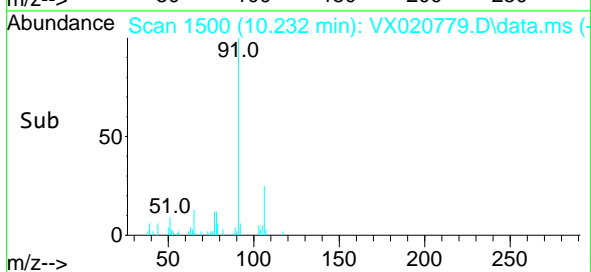
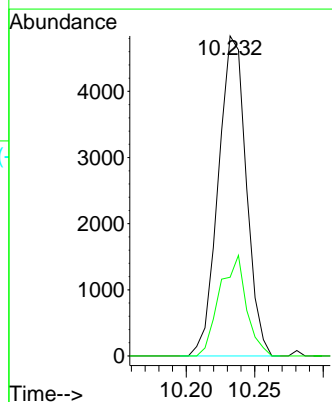


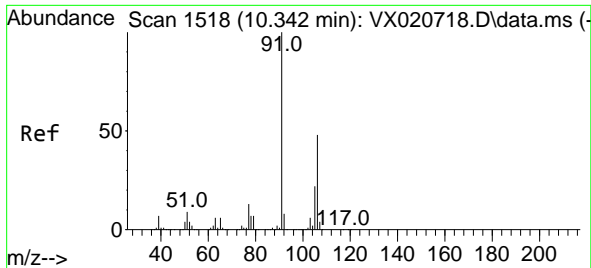
#67  
 Ethyl Benzene  
 Concen: 0.37 ug/l  
 RT: 10.232 min Scan# 1500  
 Delta R.T. -0.000 min  
 Lab File: VX020779.D  
 Acq: 27 Jan 2021 18:48



Tgt Ion: 91 Resp: 6855

Ion	Ratio	Lower	Upper
91	100		
106	24.6	24.6	37.0#

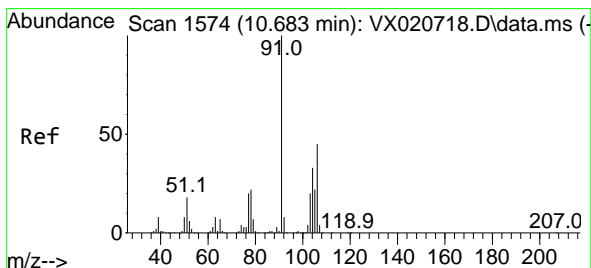
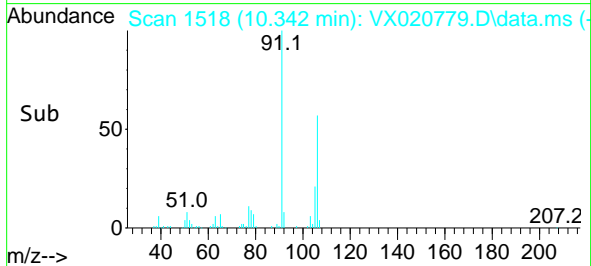
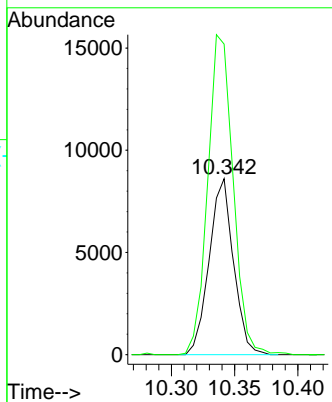
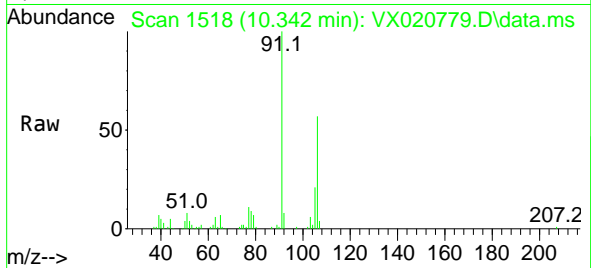




#68  
 m/p-Xylenes  
 Concen: 1.68 ug/l  
 RT: 10.342 min Scan# 1518  
 Delta R.T. -0.000 min  
 Lab File: VX020779.D  
 Acq: 27 Jan 2021 18:48

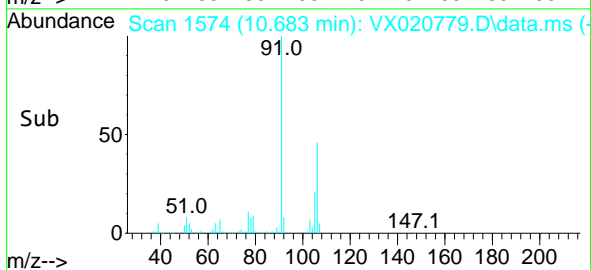
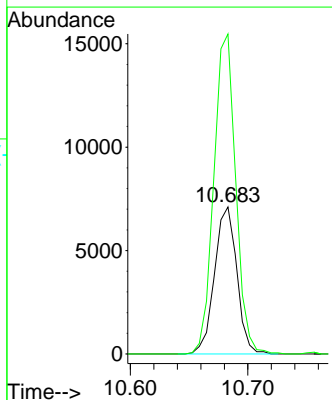
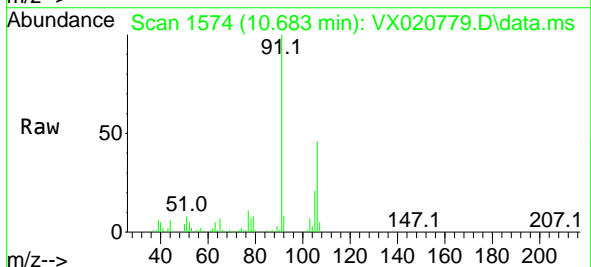
Instrument :  
 MSVOA\_X  
 ClientSampled :

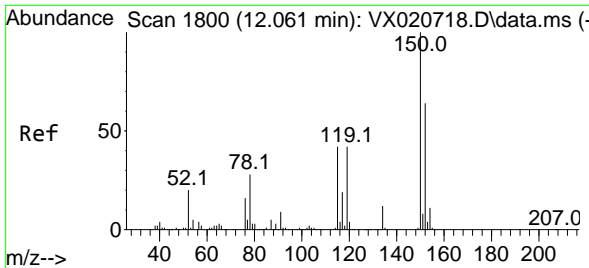
Tgt Ion:106 Resp: 11516  
 Ion Ratio Lower Upper  
 106 100  
 91 189.9 162.8 244.2



#69  
 o-Xylene  
 Concen: 1.46 ug/l  
 RT: 10.683 min Scan# 1574  
 Delta R.T. 0.000 min  
 Lab File: VX020779.D  
 Acq: 27 Jan 2021 18:48

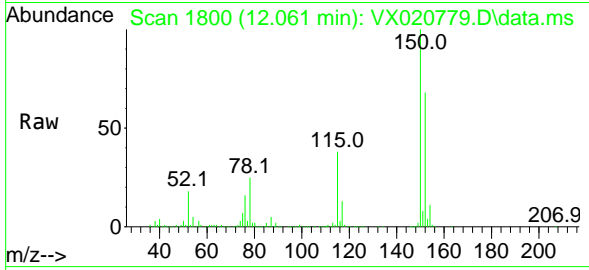
Tgt Ion:106 Resp: 9400  
 Ion Ratio Lower Upper  
 106 100  
 91 213.5 108.1 324.2



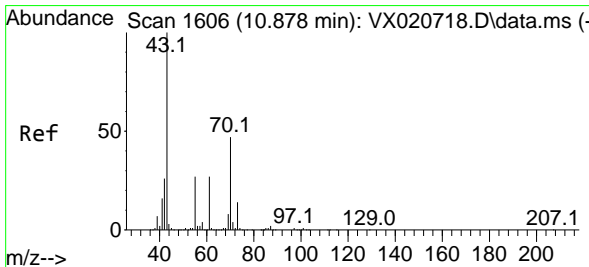
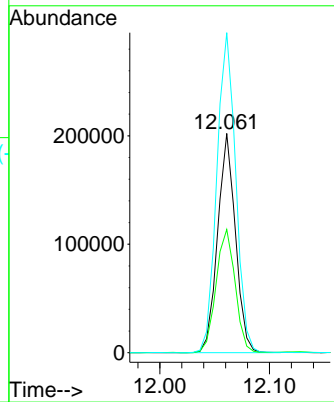
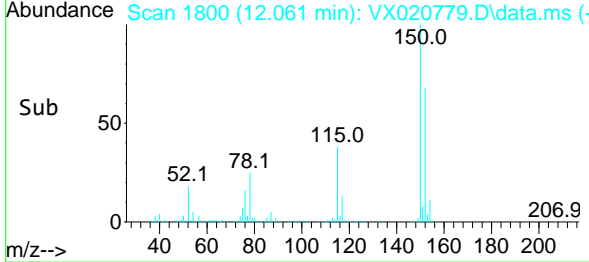


#72  
 1,4-Dichlorobenzene-d4  
 Concen: 50.00 ug/l  
 RT: 12.061 min Scan# 1800  
 Delta R.T. -0.000 min  
 Lab File: VX020779.D  
 Acq: 27 Jan 2021 18:48

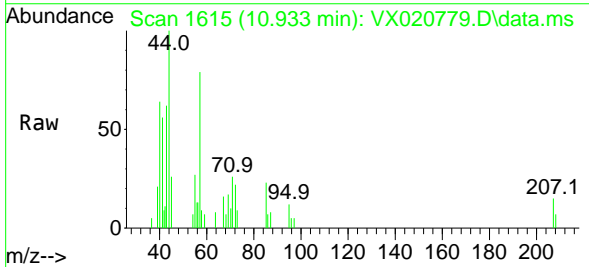
Instrument :  
 MSVOA\_X  
 ClientSampled :



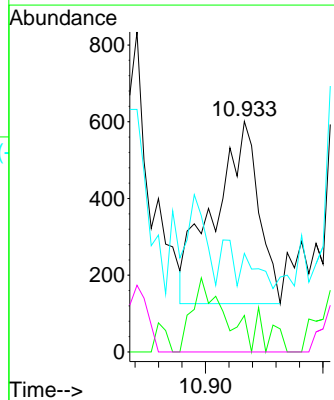
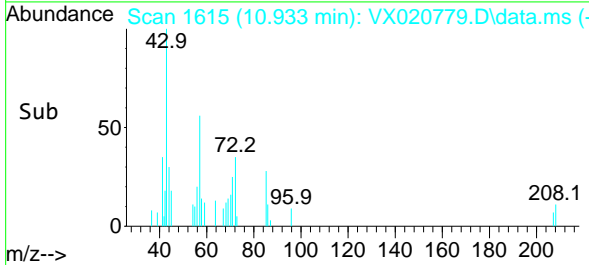
Tgt Ion:152 Resp: 228823  
 Ion Ratio Lower Upper  
 152 100  
 115 60.1 41.1 123.3  
 150 154.7 0.0 349.0



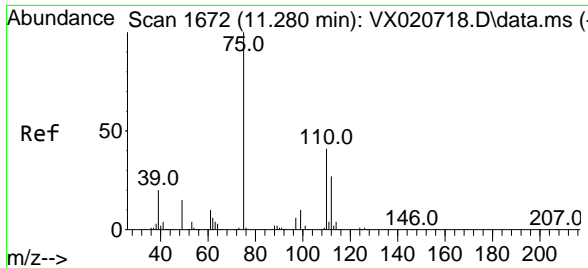
#74  
 N-amy1 acetate  
 Concen: 2.19 ug/l  
 RT: 10.933 min Scan# 1615  
 Delta R.T. 0.055 min  
 Lab File: VX020779.D  
 Acq: 27 Jan 2021 18:48



Tgt Ion: 43 Resp: 1247  
 Ion Ratio Lower Upper  
 43 100  
 70 7.2 39.0 58.6#  
 55 0.0 21.5 32.3#  
 61 0.0 22.1 33.1#

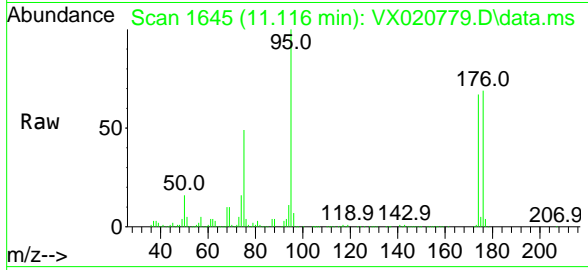




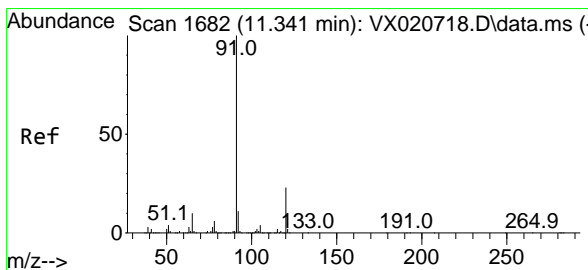
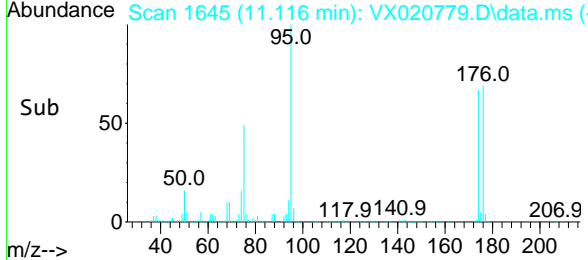
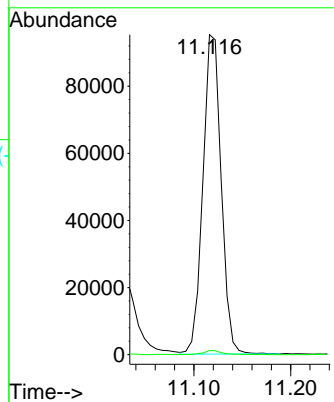


#76  
 1,2,3-Trichloropropane  
 Concen: 23.66 ug/l  
 RT: 11.116 min Scan# 1645  
 Delta R.T. -0.164 min  
 Lab File: VX020779.D  
 Acq: 27 Jan 2021 18:48

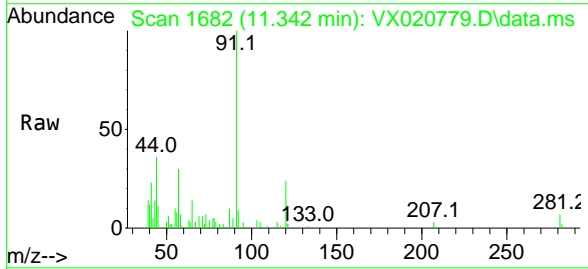
Instrument :  
 MSVOA\_X  
 ClientSampled :



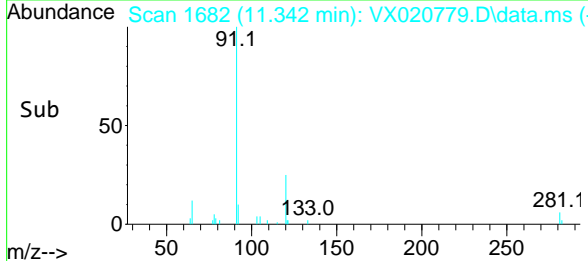
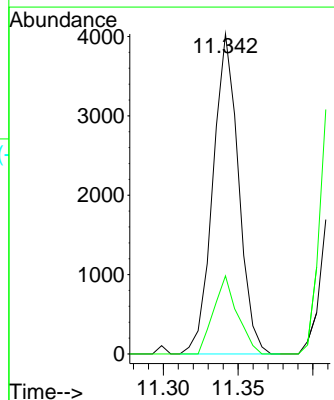
Tgt Ion: 75 Resp: 125560  
 Ion Ratio Lower Upper  
 75 100  
 77 1.5 19.1 57.5#

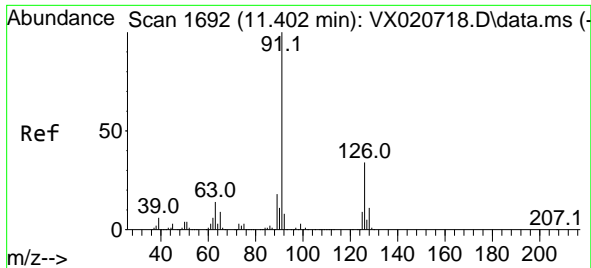


#78  
 n-propylbenzene  
 Concen: 0.25 ug/l  
 RT: 11.342 min Scan# 1682  
 Delta R.T. 0.001 min  
 Lab File: VX020779.D  
 Acq: 27 Jan 2021 18:48



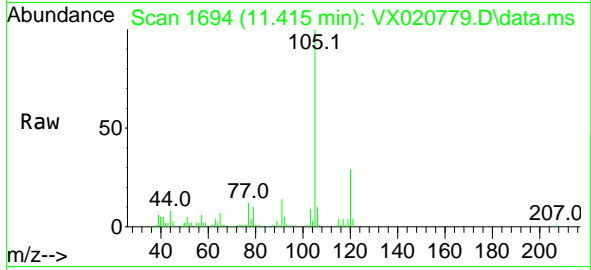
Tgt Ion: 91 Resp: 4797  
 Ion Ratio Lower Upper  
 91 100  
 120 22.6 11.5 34.5



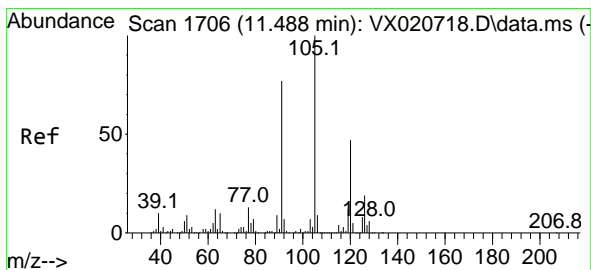
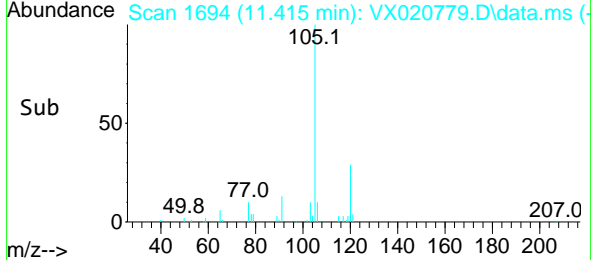
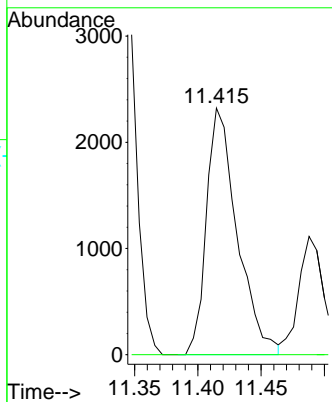


#79  
 2-Chlorotoluene  
 Concen: 0.34 ug/l  
 RT: 11.415 min Scan# 1694  
 Delta R.T. 0.013 min  
 Lab File: VX020779.D  
 Acq: 27 Jan 2021 18:48

Instrument : MSVOA\_X  
 ClientSampled :

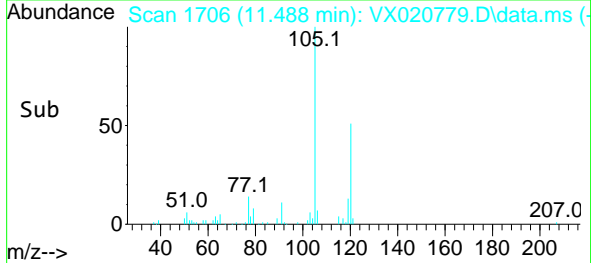
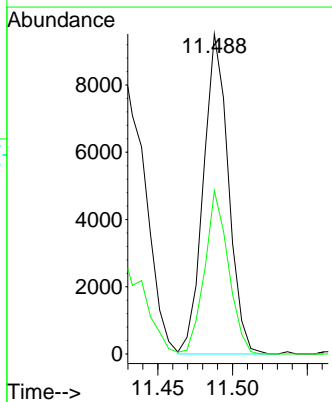
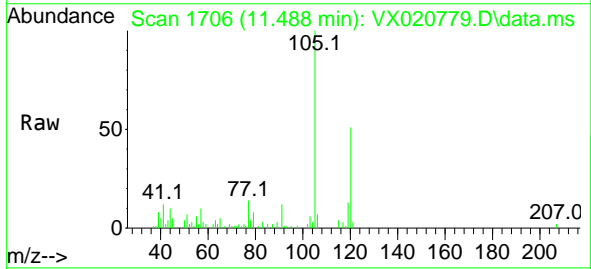


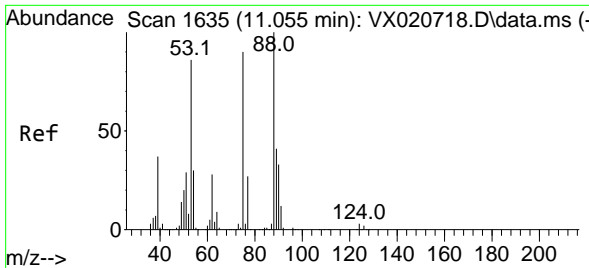
Tgt Ion: 91 Resp: 3933  
 Ion Ratio Lower Upper  
 91 100  
 126 0.0 16.6 49.8#



#80  
 1,3,5-Trimethylbenzene  
 Concen: 0.78 ug/l  
 RT: 11.488 min Scan# 1706  
 Delta R.T. -0.000 min  
 Lab File: VX020779.D  
 Acq: 27 Jan 2021 18:48

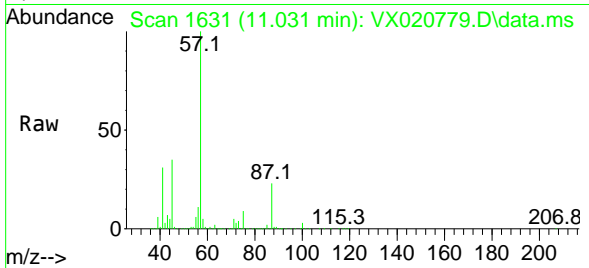
Tgt Ion: 105 Resp: 11055  
 Ion Ratio Lower Upper  
 105 100  
 120 48.5 23.8 71.5



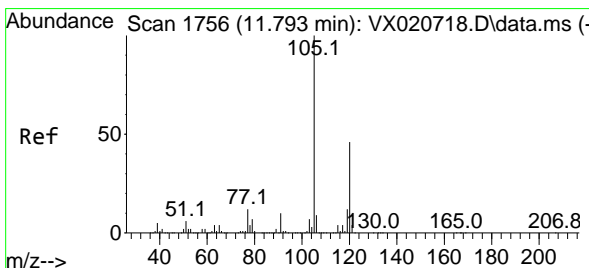
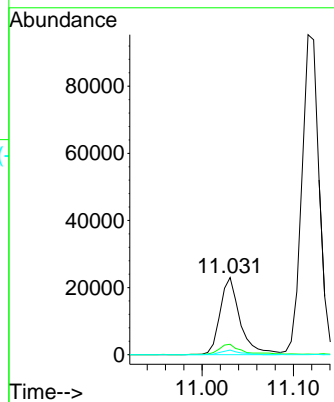
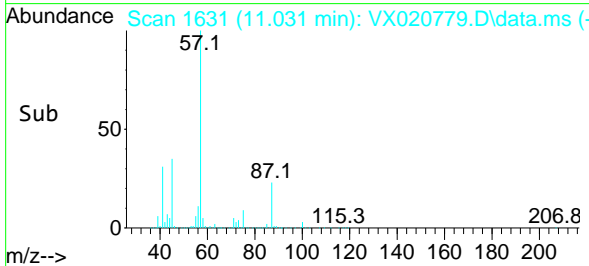


#81  
 trans-1,4-Dichloro-2-butene  
 Concen: 18.55 ug/l  
 RT: 11.031 min Scan# 1631  
 Delta R.T. -0.024 min  
 Lab File: VX020779.D  
 Acq: 27 Jan 2021 18:48

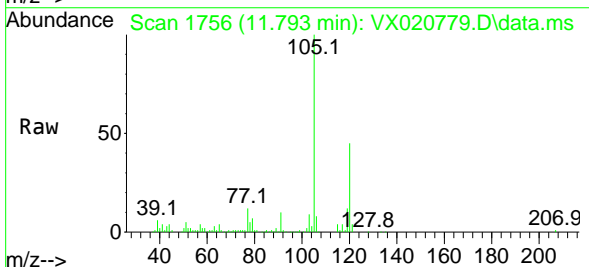
Instrument :  
 MSVOA\_X  
 ClientSampled :



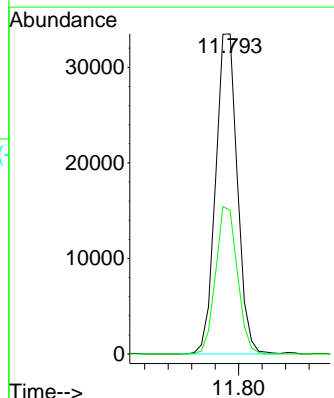
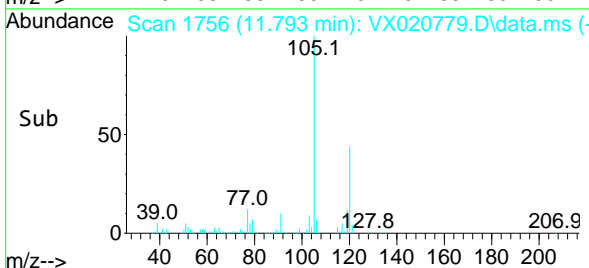
Tgt Ion: 75 Resp: 35126  
 Ion Ratio Lower Upper  
 75 100  
 53 17.0 74.5 111.7#  
 89 5.6 37.9 56.9#

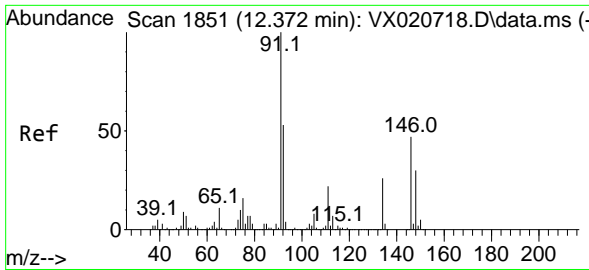


#84  
 1,2,4-Trimethylbenzene  
 Concen: 3.02 ug/l  
 RT: 11.793 min Scan# 1756  
 Delta R.T. -0.000 min  
 Lab File: VX020779.D  
 Acq: 27 Jan 2021 18:48



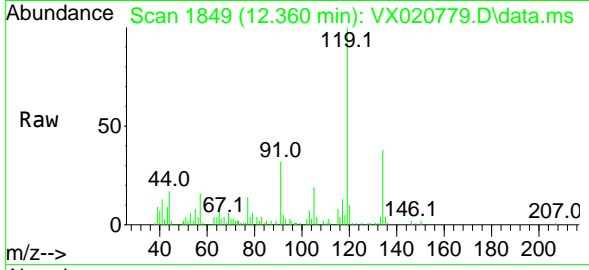
Tgt Ion: 105 Resp: 43004  
 Ion Ratio Lower Upper  
 105 100  
 120 46.1 22.4 67.3





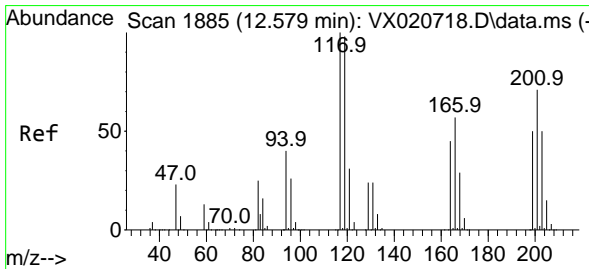
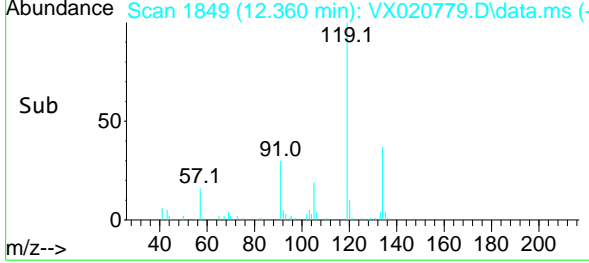
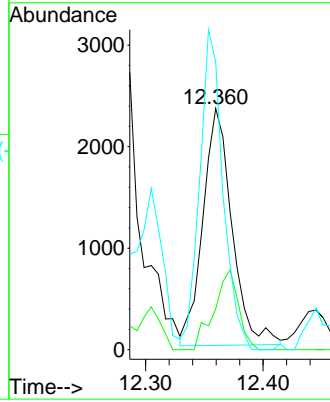
#89  
 n-Butylbenzene  
 Concen: 0.31 ug/l  
 RT: 12.360 min Scan# 1849  
 Delta R.T. -0.012 min  
 Lab File: VX020779.D  
 Acq: 27 Jan 2021 18:48

Instrument :  
 MSVOA\_X  
 ClientSampled :



Tgt Ion: 91 Resp: 4029

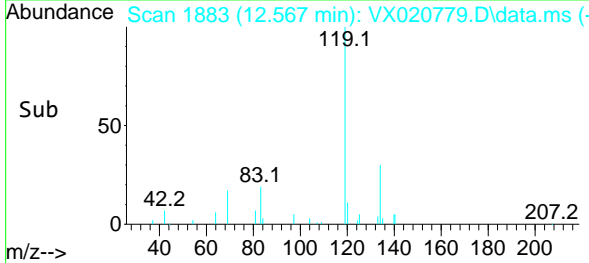
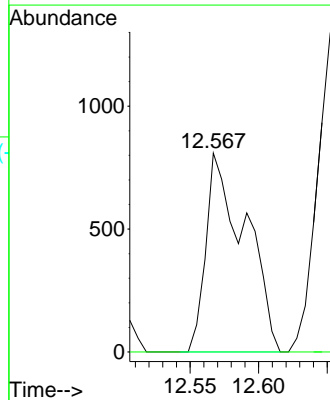
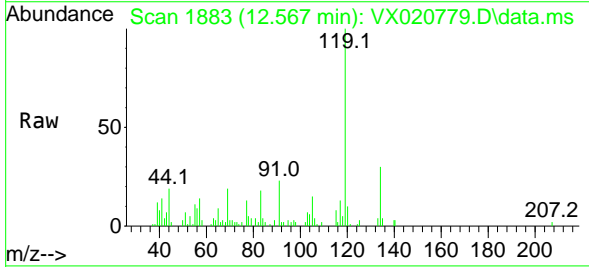
Ion	Ratio	Lower	Upper
91	100		
92	28.2	27.4	82.0
134	107.7	13.2	39.5#

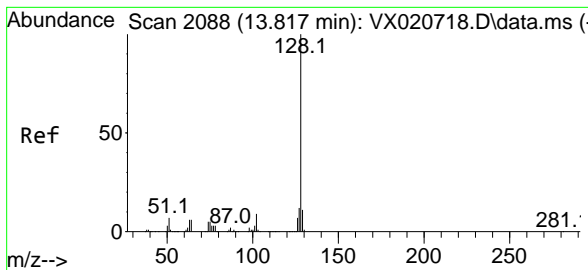


#90  
 Hexachloroethane  
 Concen: 0.61 ug/l  
 RT: 12.567 min Scan# 1883  
 Delta R.T. -0.012 min  
 Lab File: VX020779.D  
 Acq: 27 Jan 2021 18:48

Tgt Ion: 117 Resp: 1617

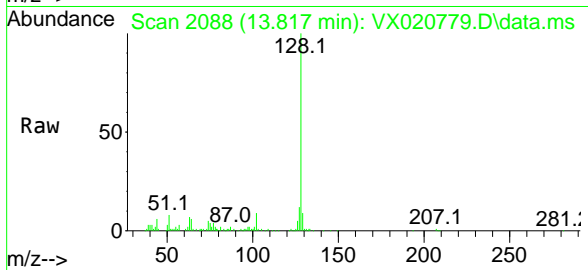
Ion	Ratio	Lower	Upper
117	100		
201	0.0	40.4	121.2#





#95  
 Naphthalene  
 Concen: 4.30 ug/l  
 RT: 13.817 min Scan# 2088  
 Delta R.T. -0.000 min  
 Lab File: VX020779.D  
 Acq: 27 Jan 2021 18:48

Instrument :  
 MSVOA\_X  
 ClientSampled :



Tgt Ion:128 Resp: 26507

Ion	Ratio	Lower	Upper
128	100		
127	12.6	10.3	15.5
129	12.9	8.8	13.2

