

Data Path : Z:\voasrv\HPCHEM1\MSVOA_X\Data\VX012722\
 Data File : VX026616.D
 Acq On : 27 Jan 2022 12:04
 Operator : JC/MD
 Sample : N1286-10
 Misc : 5.0mL/MSVOA_X/WATER
 ALS Vial : 6 Sample Multiplier: 1

Instrument :
 MSVOA_X
 ClientSampleId :
 MW-12R

Quant Time: Jan 28 04:24:31 2022
 Quant Method : Z:\voasrv\HPCHEM1\MSVOA_X\Method\82X011122W.M
 Quant Title : SW846 8260
 QLast Update : Tue Jan 11 14:45:13 2022
 Response via : Initial Calibration

Compound	R.T.	QIon	Response	Conc	Units	Dev(Min)

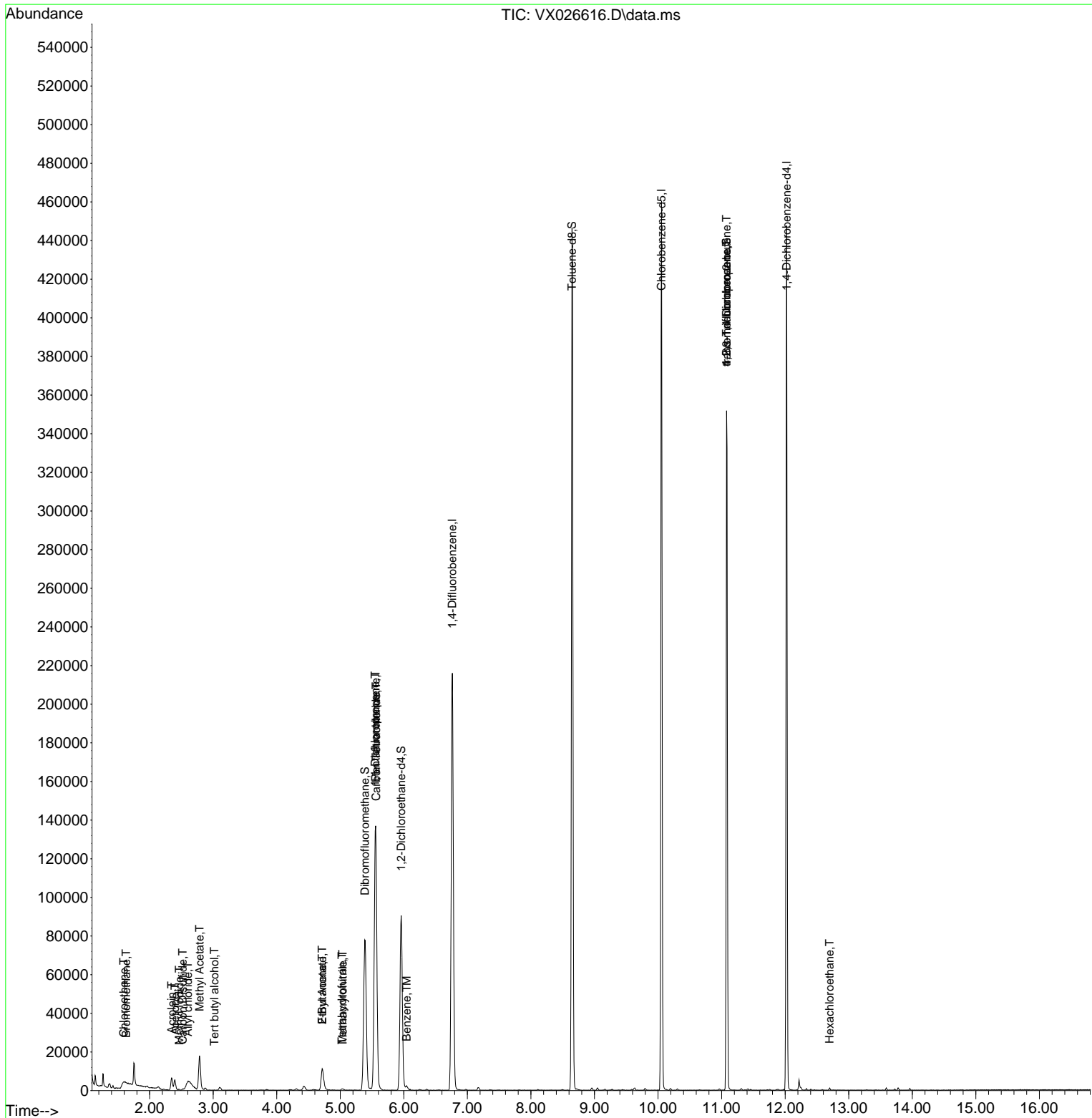
Internal Standards						
1) Pentafluorobenzene	5.556	168	131203	50.000	ug/l	0.00
34) 1,4-Difluorobenzene	6.763	114	221920	50.000	ug/l	0.00
63) Chlorobenzene-d5	10.055	117	205016	50.000	ug/l	0.00
72) 1,4-Dichlorobenzene-d4	12.024	152	87531	50.000	ug/l	0.00
System Monitoring Compounds						
33) 1,2-Dichloroethane-d4	5.958	65	86039	46.944	ug/l	0.00
Spiked Amount	50.000	Range 78 - 117	Recovery	=	93.880%	
35) Dibromofluoromethane	5.385	113	69550	48.531	ug/l	0.00
Spiked Amount	50.000	Range 75 - 124	Recovery	=	97.060%	
50) Toluene-d8	8.647	98	262633	50.856	ug/l	0.00
Spiked Amount	50.000	Range 92 - 112	Recovery	=	101.720%	
62) 4-Bromofluorobenzene	11.079	95	98610	53.752	ug/l	0.00
Spiked Amount	50.000	Range 83 - 123	Recovery	=	107.500%	
Target Compounds						
						Qvalue
5) Bromomethane	1.630	94	144	0.209	ug/l #	74
6) Chloroethane	1.593	64	5291	7.017	ug/l #	55
10) Methyl Iodide	2.465	142	386	4.673	ug/l #	75
11) Tert butyl alcohol	3.020	59	65	0.255	ug/l #	75
13) Acrolein	2.349	56	863	3.185	ug/l #	79
14) Allyl chloride	2.605	41	600	0.238	ug/l #	43
16) Acetone	2.398	43	7114	7.611	ug/l	100
17) Carbon Disulfide	2.520	76	1283	0.321	ug/l #	74
18) Methyl Acetate	2.788	43	12905	6.945	ug/l #	53
25) 2-Butanone	4.715	43	20526	16.887	ug/l #	50
29) Tetrahydrofuran	5.025	42	685	0.949	ug/l #	55
36) 1,1-Dichloropropene	5.550	75	10142	4.483	ug/l #	51
37) Ethyl Acetate	4.715	43	20526	8.969	ug/l	99
38) Carbon Tetrachloride	5.562	117	13028	5.598	ug/l #	17
40) Benzene	6.044	78	2633	0.421	ug/l	98
41) Methacrylonitrile	5.038	41	353	0.272	ug/l #	35
76) 1,2,3-Trichloropropane	11.079	75	48759	25.300	ug/l #	40
81) trans-1,4-Dichloro-2-b...	11.079	75	48759	76.842	ug/l #	3
90) Hexachloroethane	12.701	117	729	2.875	ug/l #	14

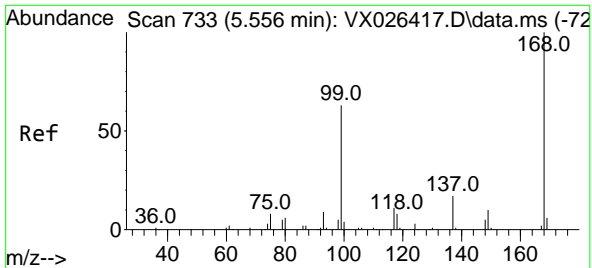
(#) = qualifier out of range (m) = manual integration (+) = signals summed

Data Path : Z:\voasrv\HPCHEM1\MSVOA_X\Data\VX012722\
 Data File : VX026616.D
 Acq On : 27 Jan 2022 12:04
 Operator : JC/MD
 Sample : N1286-10
 Misc : 5.0mL/MSVOA_X/WATER
 ALS Vial : 6 Sample Multiplier: 1

Instrument :
 MSVOA_X
 ClientSampleId :
 MW-12R

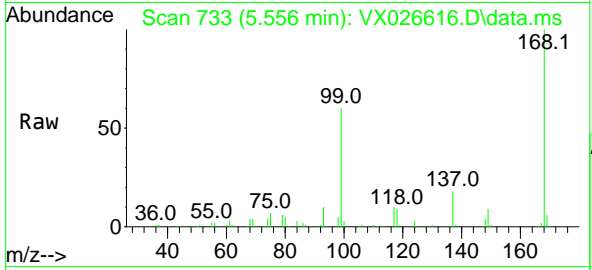
Quant Time: Jan 28 04:24:31 2022
 Quant Method : Z:\voasrv\HPCHEM1\MSVOA_X\Method\82X011122W.M
 Quant Title : SW846 8260
 QLast Update : Tue Jan 11 14:45:13 2022
 Response via : Initial Calibration



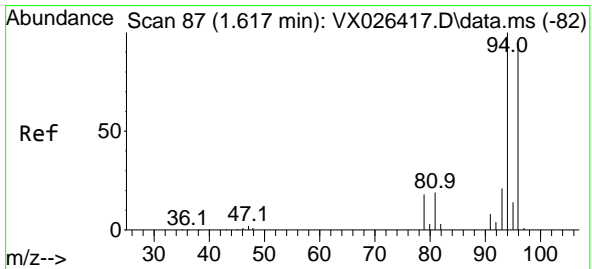
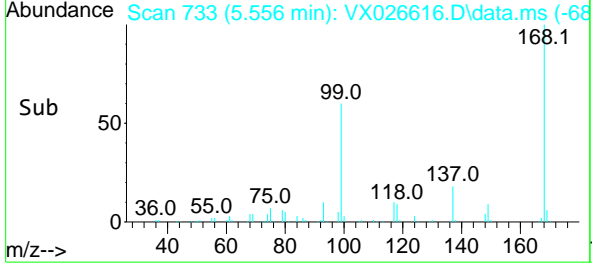
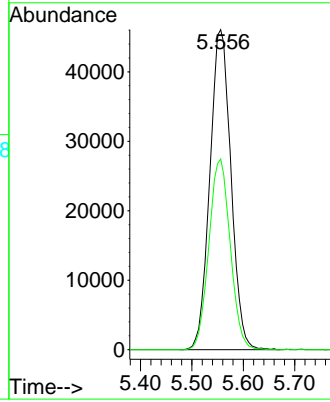


#1
 Pentafluorobenzene
 Concen: 50.000 ug/l
 RT: 5.556 min Scan# 71
 Delta R.T. -0.000 min
 Lab File: VX026616.D
 Acq: 27 Jan 2022 12:04

Instrument :
 MSVOA_X
 ClientSampleId :
 MW-12R

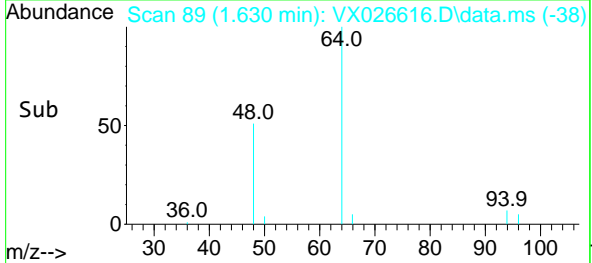
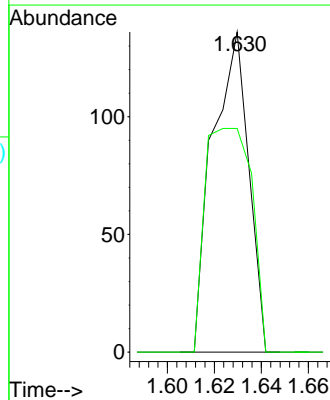
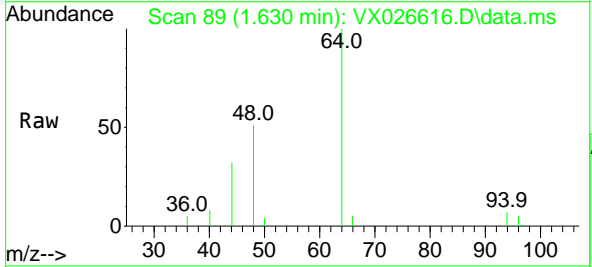


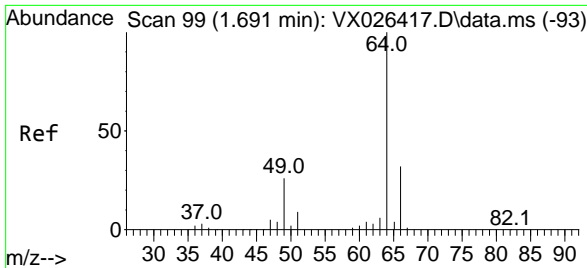
Tgt Ion:168 Resp: 131203
 Ion Ratio Lower Upper
 168 100
 99 59.6 50.3 75.5



#5
 Bromomethane
 Concen: 0.209 ug/l
 RT: 1.630 min Scan# 89
 Delta R.T. 0.012 min
 Lab File: VX026616.D
 Acq: 27 Jan 2022 12:04

Tgt Ion: 94 Resp: 144
 Ion Ratio Lower Upper
 94 100
 96 69.9 75.9 113.9#

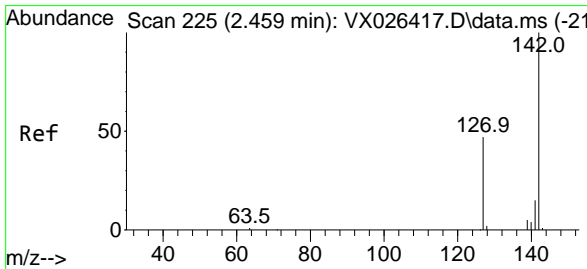
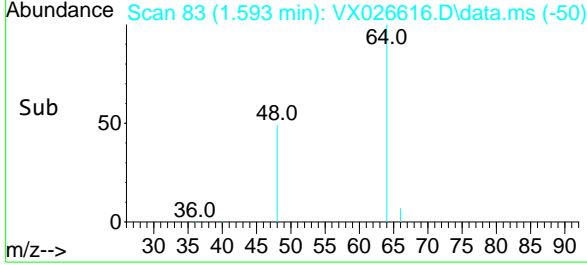
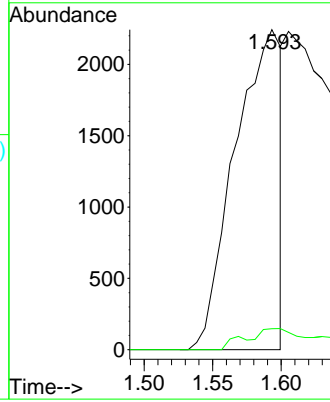
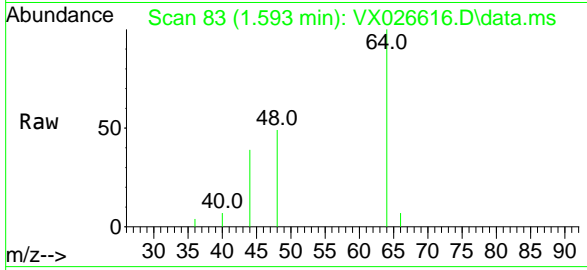




#6
 Chloroethane
 Concen: 7.017 ug/l
 RT: 1.593 min Scan# 81
 Delta R.T. -0.098 min
 Lab File: VX026616.D
 Acq: 27 Jan 2022 12:04

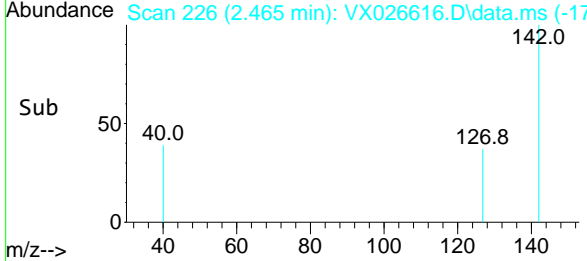
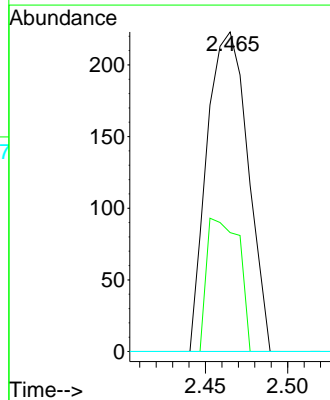
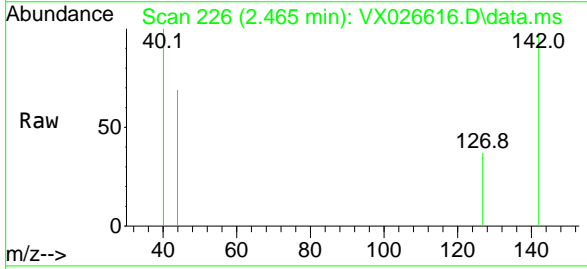
Instrument : MSVOA_X
 Client SampleId : MW-12R

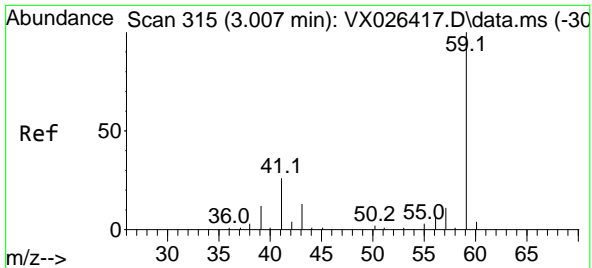
Tgt Ion: 64 Resp: 5291
 Ion Ratio Lower Upper
 64 100
 66 6.6 25.4 38.2#



#10
 Methyl Iodide
 Concen: 4.673 ug/l
 RT: 2.465 min Scan# 226
 Delta R.T. 0.006 min
 Lab File: VX026616.D
 Acq: 27 Jan 2022 12:04

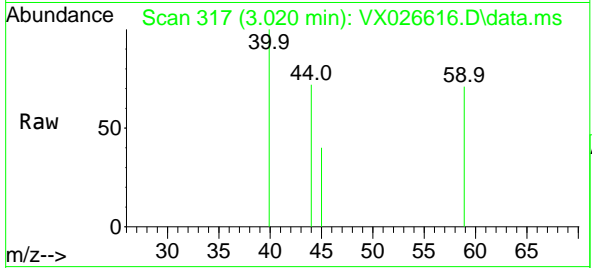
Tgt Ion:142 Resp: 386
 Ion Ratio Lower Upper
 142 100
 127 32.9 38.1 57.1#
 141 0.0 11.2 16.8#



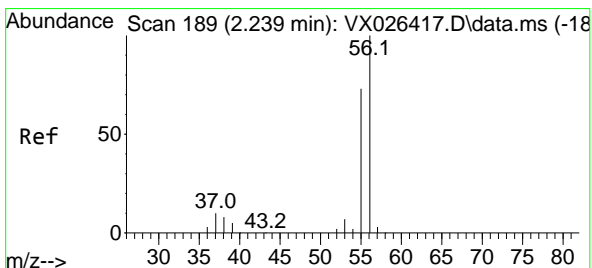
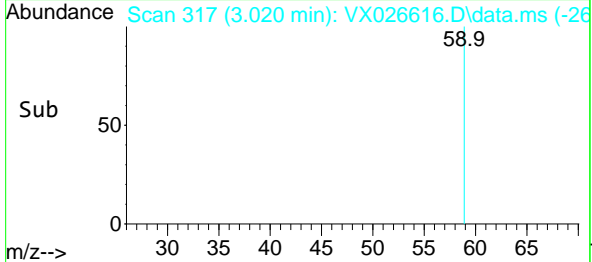
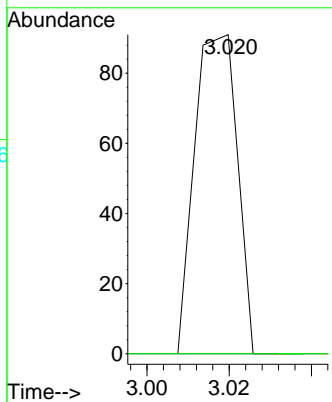


#11
 Tert butyl alcohol
 Concen: 0.255 ug/l
 RT: 3.020 min Scan# 31
 Delta R.T. 0.013 min
 Lab File: VX026616.D
 Acq: 27 Jan 2022 12:04

Instrument : MSVOA_X
 ClientSampleId : MW-12R

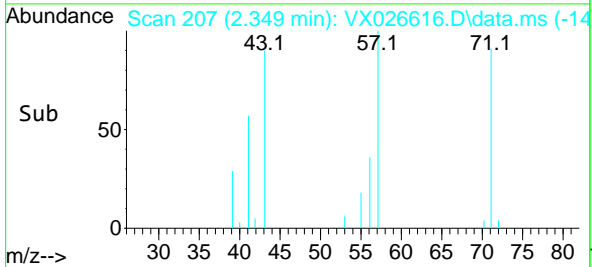
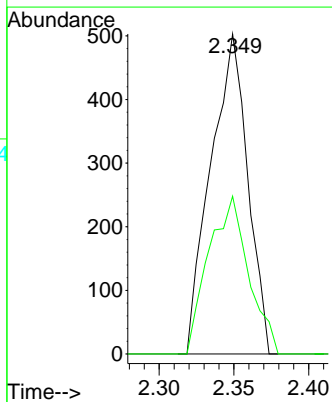
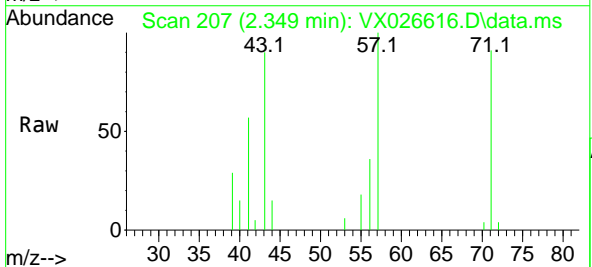


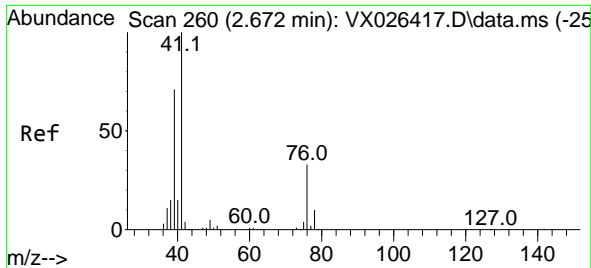
Tgt Ion: 59 Resp: 65
 Ion Ratio Lower Upper
 59 100
 57 0.0 7.2 10.8#



#13
 Acrolein
 Concen: 3.185 ug/l
 RT: 2.349 min Scan# 207
 Delta R.T. 0.110 min
 Lab File: VX026616.D
 Acq: 27 Jan 2022 12:04

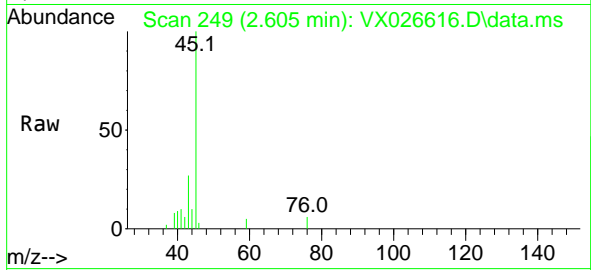
Tgt Ion: 56 Resp: 863
 Ion Ratio Lower Upper
 56 100
 55 53.4 56.9 85.3#





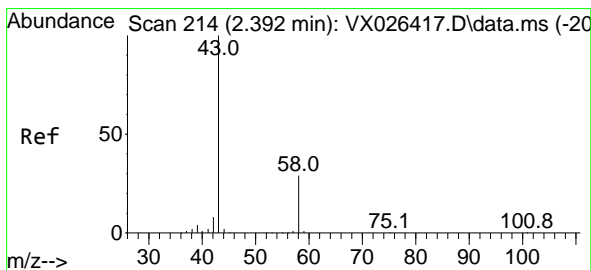
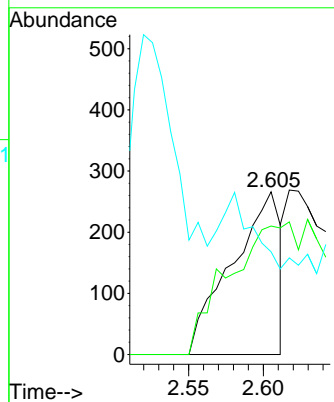
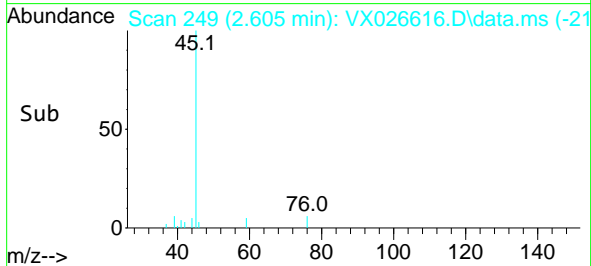
#14
 Allyl chloride
 Concen: 0.238 ug/l
 RT: 2.605 min Scan# 249
 Delta R.T. -0.067 min
 Lab File: VX026616.D
 Acq: 27 Jan 2022 12:04

Instrument : MSVOA_X
 ClientSampleId : MW-12R

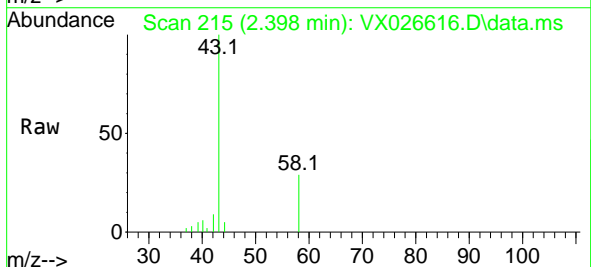


Tgt Ion: 41 Resp: 600

Ion	Ratio	Lower	Upper
41	100		
39	113.3	54.2	81.4#
76	0.0	25.2	37.8#

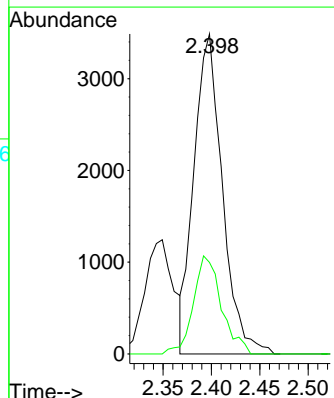
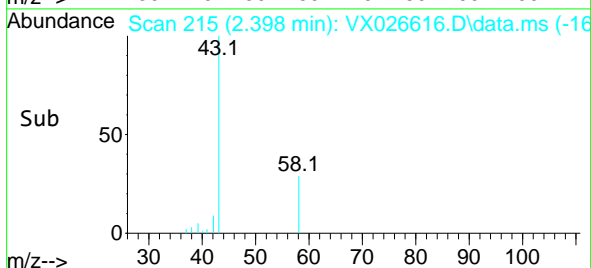


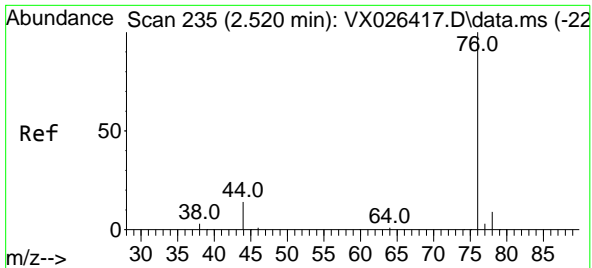
#16
 Acetone
 Concen: 7.611 ug/l
 RT: 2.398 min Scan# 215
 Delta R.T. 0.006 min
 Lab File: VX026616.D
 Acq: 27 Jan 2022 12:04



Tgt Ion: 43 Resp: 7114

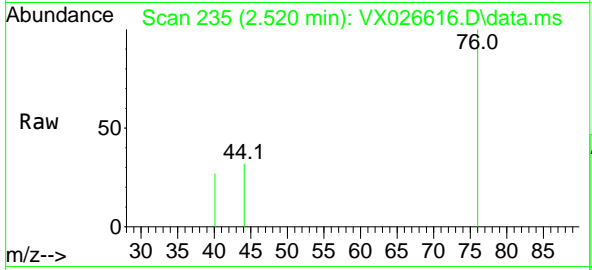
Ion	Ratio	Lower	Upper
43	100		
58	28.6	23.0	34.6



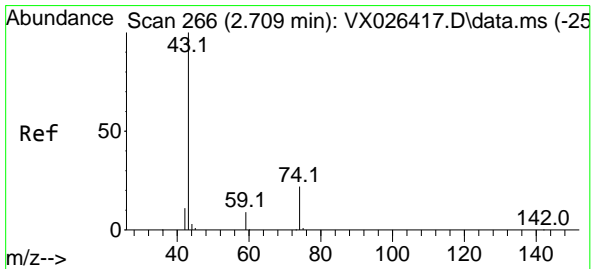
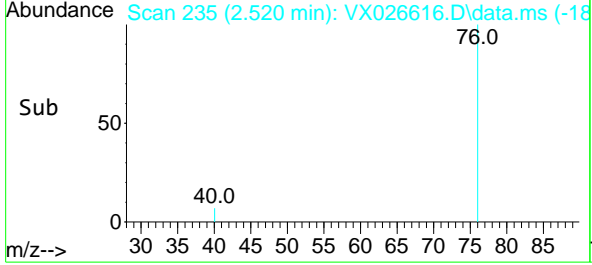
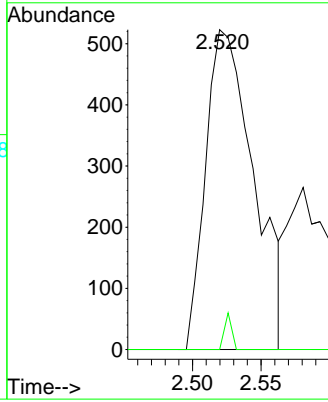


#17
 Carbon Disulfide
 Concen: 0.321 ug/l
 RT: 2.520 min Scan# 211
 Delta R.T. 0.000 min
 Lab File: VX026616.D
 Acq: 27 Jan 2022 12:04

Instrument : MSVOA_X
 ClientSampleId : MW-12R

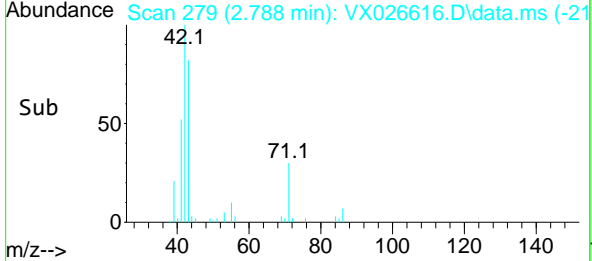
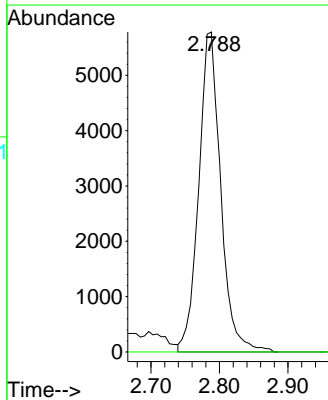
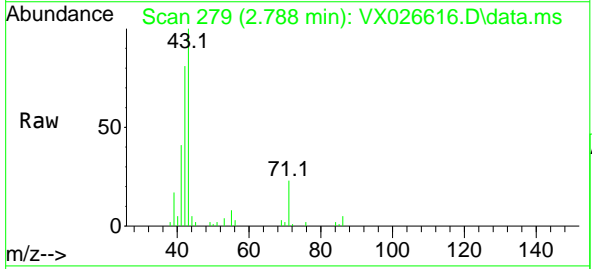


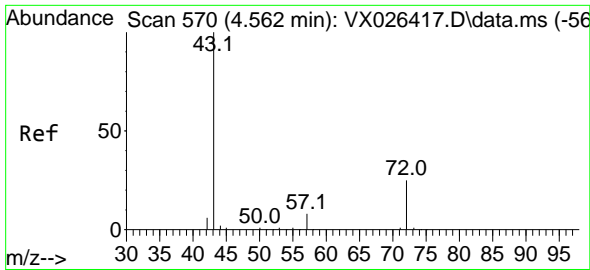
Tgt Ion: 76 Resp: 1283
 Ion Ratio Lower Upper
 76 100
 78 0.0 7.5 11.3#



#18
 Methyl Acetate
 Concen: 6.945 ug/l
 RT: 2.788 min Scan# 279
 Delta R.T. 0.079 min
 Lab File: VX026616.D
 Acq: 27 Jan 2022 12:04

Tgt Ion: 43 Resp: 12905
 Ion Ratio Lower Upper
 43 100
 74 0.0 18.3 27.5#

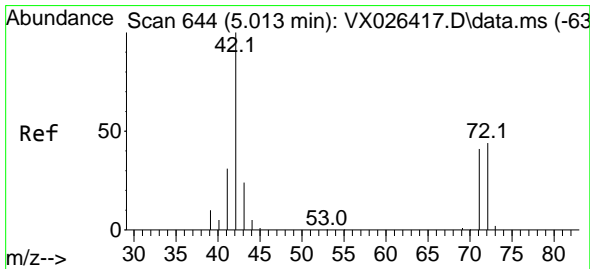
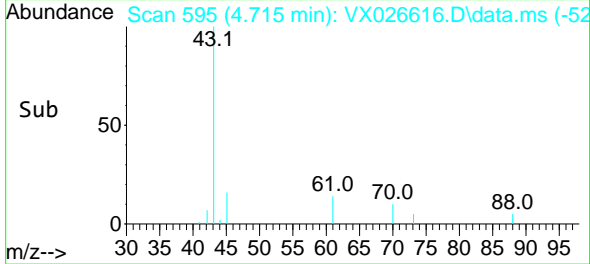
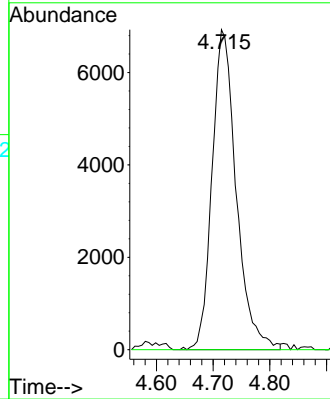
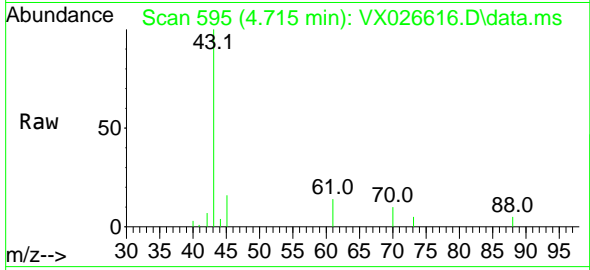




#25
 2-Butanone
 Concen: 16.887 ug/l
 RT: 4.715 min Scan# 51
 Delta R.T. 0.152 min
 Lab File: VX026616.D
 Acq: 27 Jan 2022 12:04

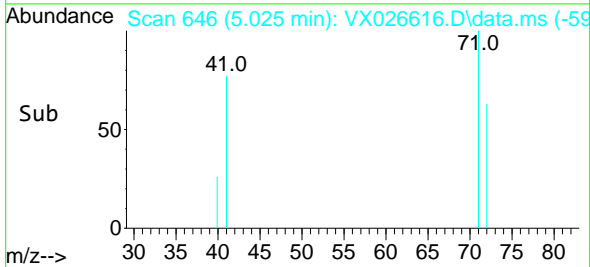
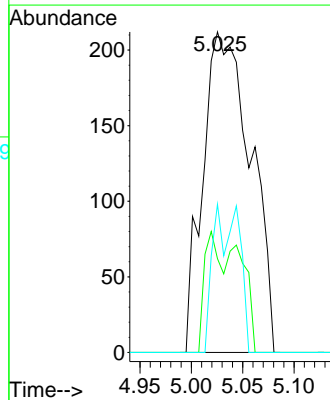
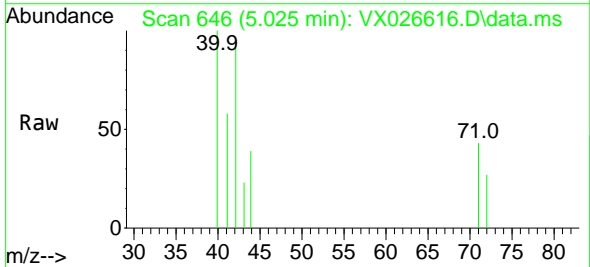
Instrument : MSVOA_X
 ClientSampleId : MW-12R

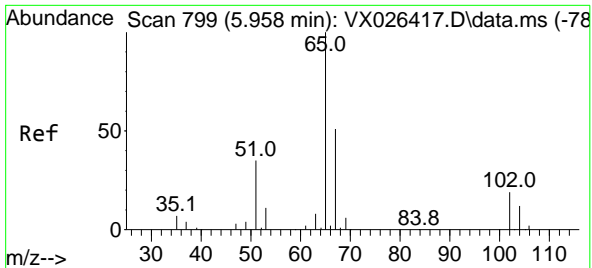
Tgt Ion: 43 Resp: 20526
 Ion Ratio Lower Upper
 43 100
 72 0.0 20.4 30.6#



#29
 Tetrahydrofuran
 Concen: 0.949 ug/l
 RT: 5.025 min Scan# 646
 Delta R.T. 0.012 min
 Lab File: VX026616.D
 Acq: 27 Jan 2022 12:04

Tgt Ion: 42 Resp: 685
 Ion Ratio Lower Upper
 42 100
 72 13.9 34.6 52.0#
 71 12.1 31.8 47.8#

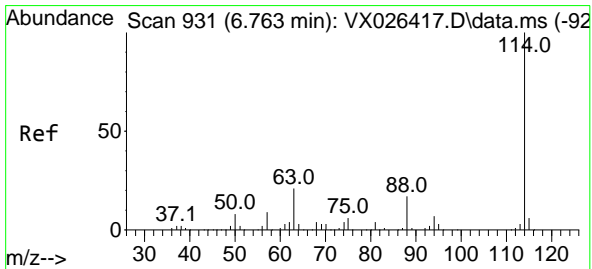
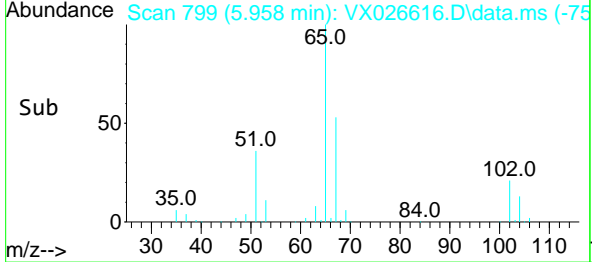
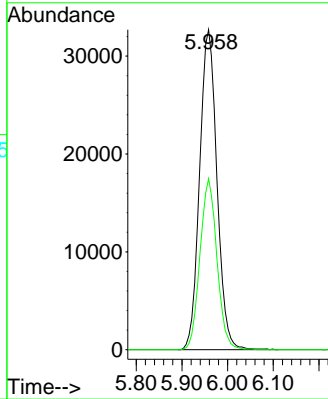
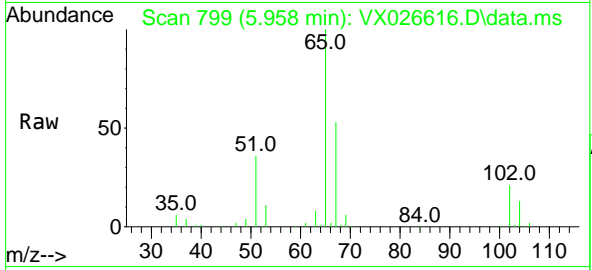




#33
 1,2-Dichloroethane-d4
 Concen: 46.944 ug/l
 RT: 5.958 min Scan# 799
 Delta R.T. 0.000 min
 Lab File: VX026616.D
 Acq: 27 Jan 2022 12:04

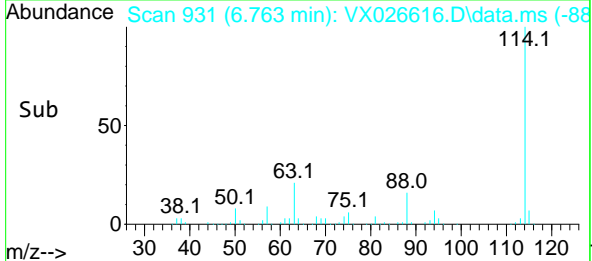
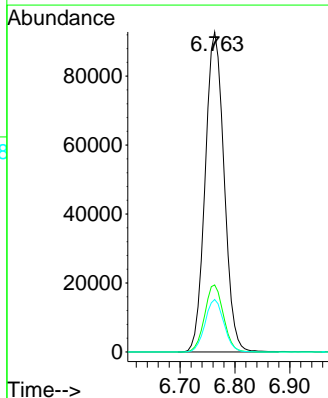
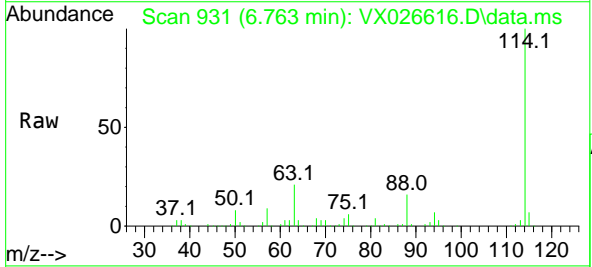
Instrument : MSVOA_X
 ClientSampleId : MW-12R

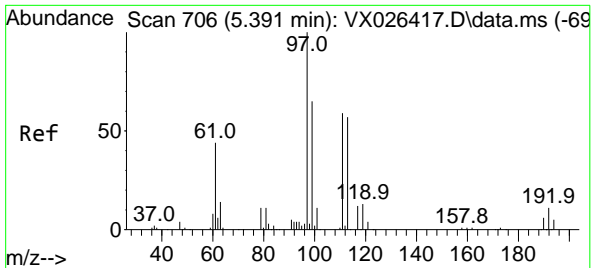
Tgt Ion: 65 Resp: 86039
 Ion Ratio Lower Upper
 65 100
 67 52.2 0.0 100.8



#34
 1,4-Difluorobenzene
 Concen: 50.000 ug/l
 RT: 6.763 min Scan# 931
 Delta R.T. 0.000 min
 Lab File: VX026616.D
 Acq: 27 Jan 2022 12:04

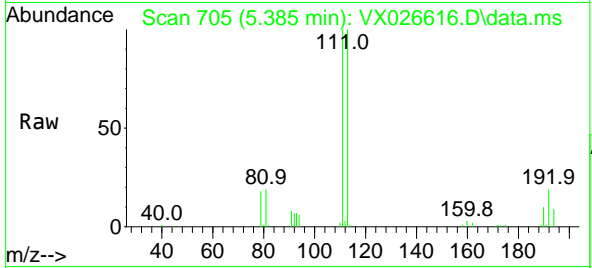
Tgt Ion: 114 Resp: 221920
 Ion Ratio Lower Upper
 114 100
 63 21.0 0.0 42.8
 88 16.4 0.0 33.0



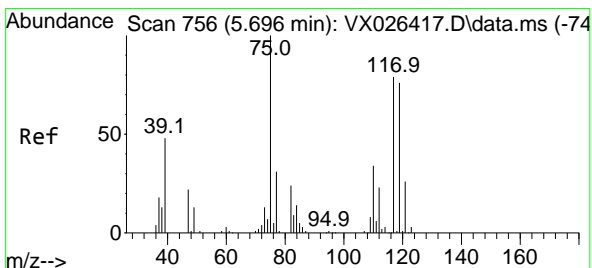
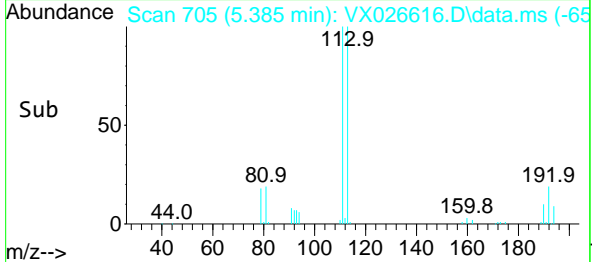
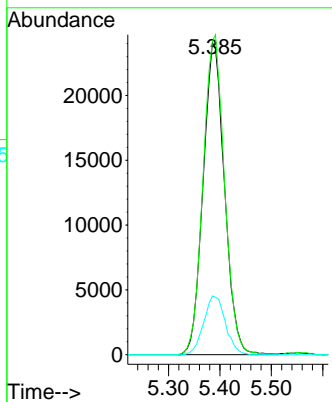


#35
 Dibromofluoromethane
 Concen: 48.531 ug/l
 RT: 5.385 min Scan# 706
 Delta R.T. -0.006 min
 Lab File: VX026616.D
 Acq: 27 Jan 2022 12:04

Instrument : MSVOA_X
 ClientSampleId : MW-12R

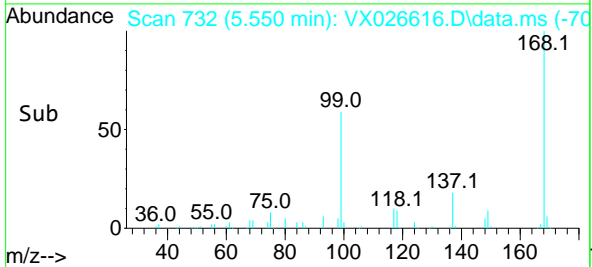
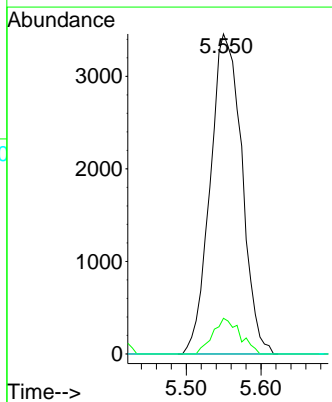
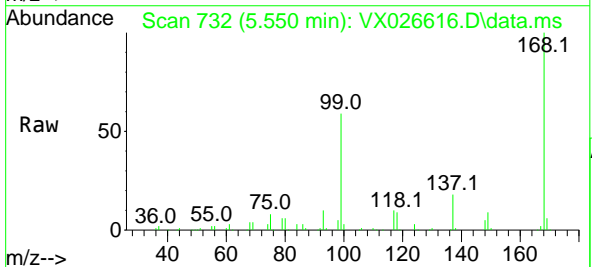


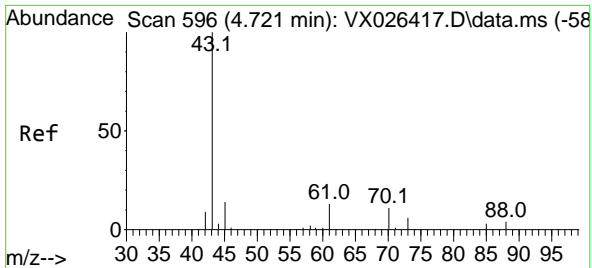
Tgt Ion: 113 Resp: 69550
 Ion Ratio Lower Upper
 113 100
 111 102.7 81.2 121.8
 192 19.1 15.0 22.4



#36
 1,1-Dichloropropene
 Concen: 4.483 ug/l
 RT: 5.550 min Scan# 732
 Delta R.T. -0.146 min
 Lab File: VX026616.D
 Acq: 27 Jan 2022 12:04

Tgt Ion: 75 Resp: 10142
 Ion Ratio Lower Upper
 75 100
 110 9.7 17.2 51.6#
 77 0.0 24.6 36.8#

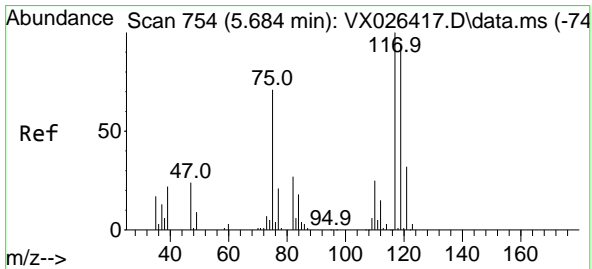
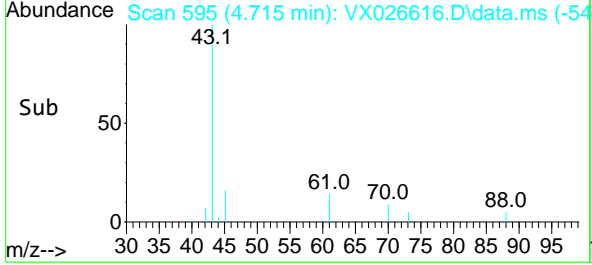
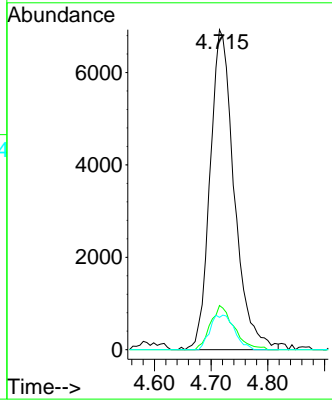
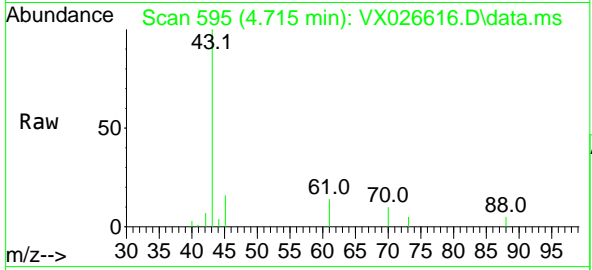




#37
 Ethyl Acetate
 Concen: 8.969 ug/l
 RT: 4.715 min Scan# 595
 Delta R.T. -0.006 min
 Lab File: VX026616.D
 Acq: 27 Jan 2022 12:04

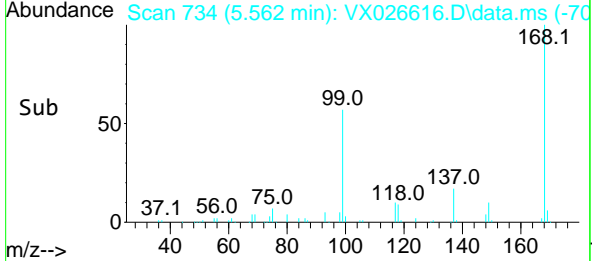
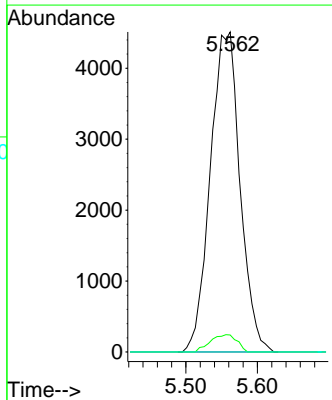
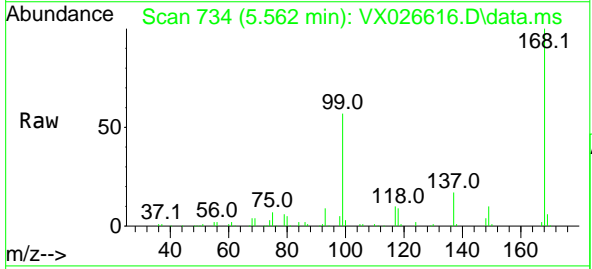
Instrument : MSVOA_X
 ClientSampleId : MW-12R

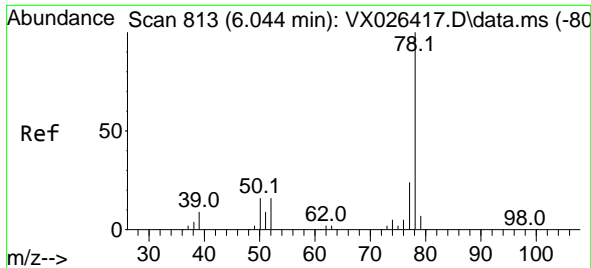
Tgt Ion	Resp	Lower	Upper
43	100		
61	13.4	10.6	16.0
70	10.9	8.5	12.7



#38
 Carbon Tetrachloride
 Concen: 5.598 ug/l
 RT: 5.562 min Scan# 734
 Delta R.T. -0.122 min
 Lab File: VX026616.D
 Acq: 27 Jan 2022 12:04

Tgt Ion	Resp	Lower	Upper
117	100		
119	5.3	74.7	112.1#
121	0.0	25.4	38.0#

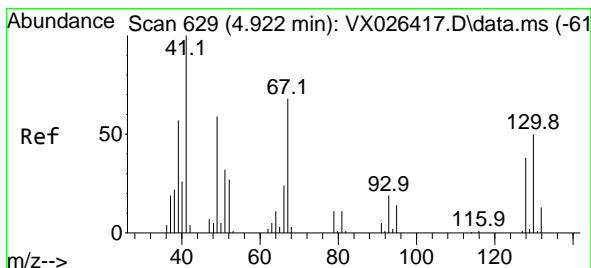
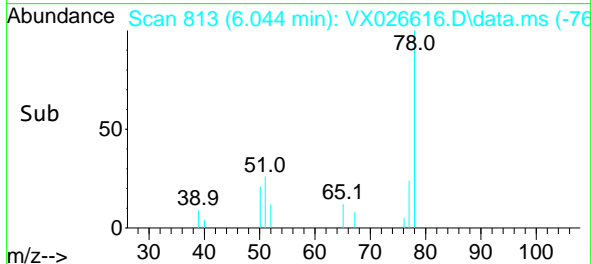
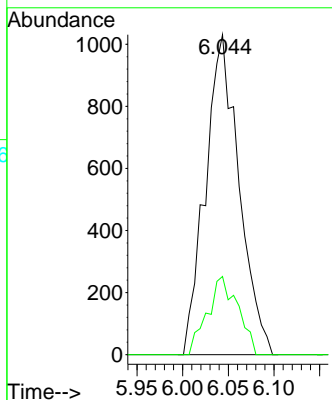
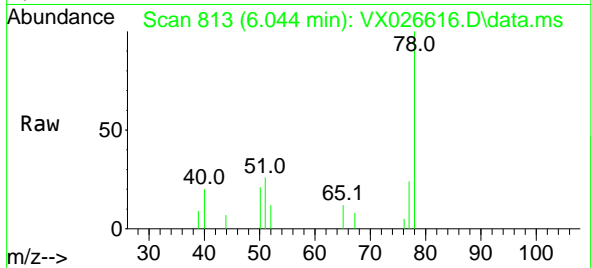




#40
Benzene
Concen: 0.421 ug/l
RT: 6.044 min Scan# 813
Delta R.T. 0.000 min
Lab File: VX026616.D
Acq: 27 Jan 2022 12:04

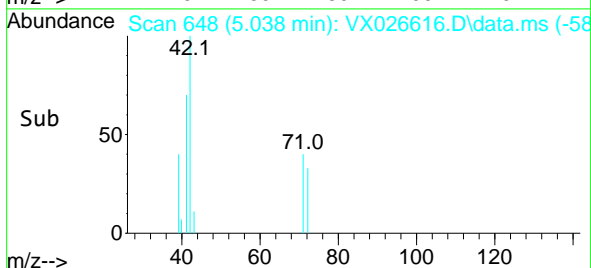
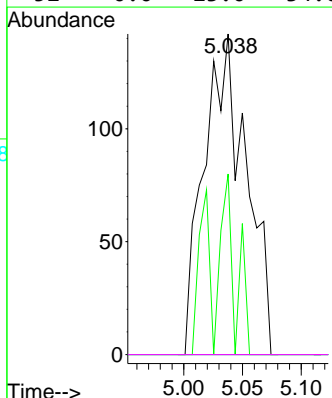
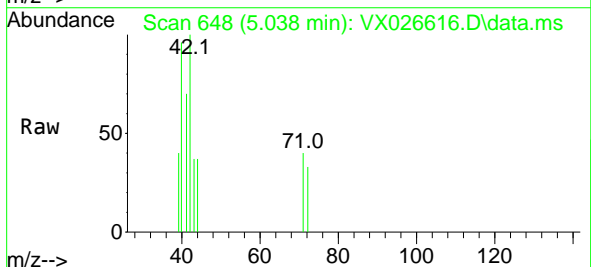
Instrument : MSVOA_X
ClientSampleId : MW-12R

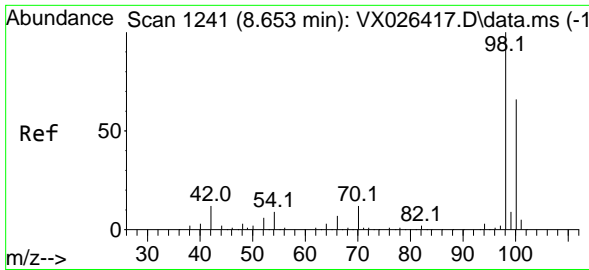
Tgt Ion: 78 Resp: 2633
Ion Ratio Lower Upper
78 100
77 24.4 18.9 28.3



#41
Methacrylonitrile
Concen: 0.272 ug/l
RT: 5.038 min Scan# 648
Delta R.T. 0.116 min
Lab File: VX026616.D
Acq: 27 Jan 2022 12:04

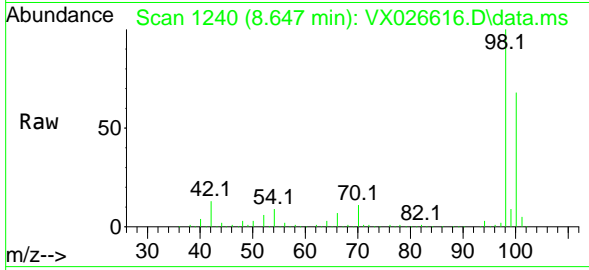
Tgt Ion: 41 Resp: 353
Ion Ratio Lower Upper
41 100
39 20.1 45.4 68.0#
67 0.0 53.2 79.8#
52 0.0 23.0 34.6#



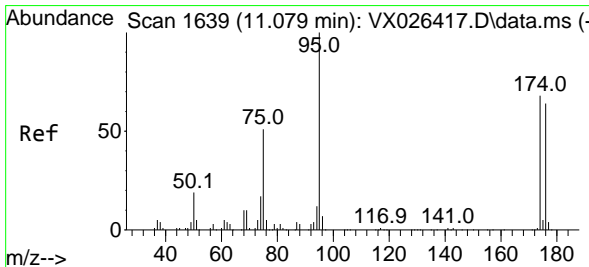
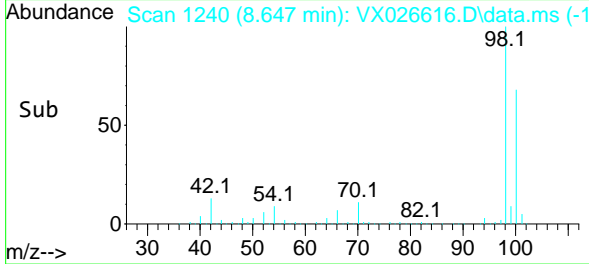
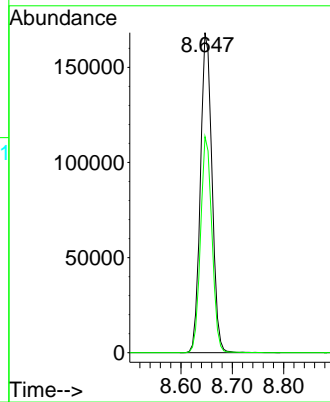


#50
 Toluene-d8
 Concen: 50.856 ug/l
 RT: 8.647 min Scan# 11
 Delta R.T. -0.006 min
 Lab File: VX026616.D
 Acq: 27 Jan 2022 12:04

Instrument :
 MSVOA_X
 ClientSampleId :
 MW-12R

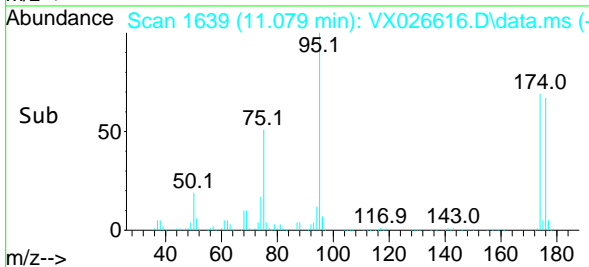
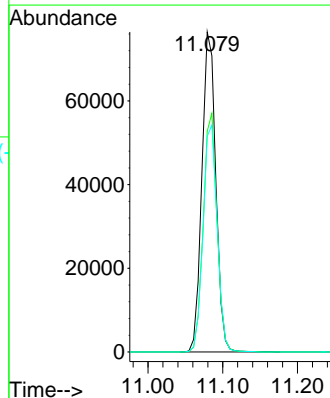
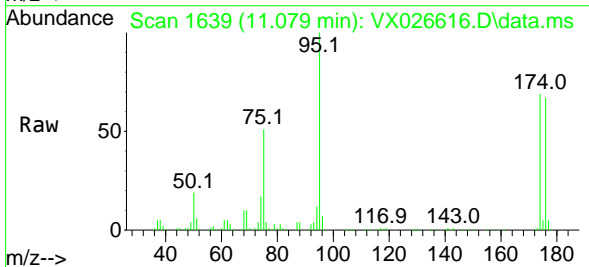


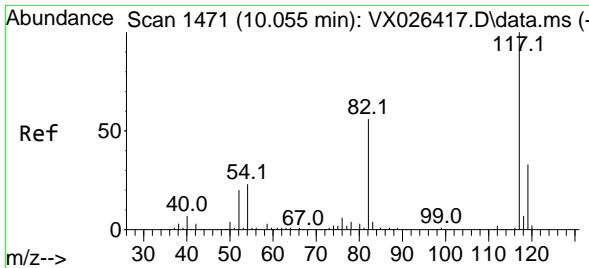
Tgt Ion: 98 Resp: 262633
 Ion Ratio Lower Upper
 98 100
 100 66.6 53.2 79.8



#62
 4-Bromofluorobenzene
 Concen: 53.752 ug/l
 RT: 11.079 min Scan# 1639
 Delta R.T. 0.000 min
 Lab File: VX026616.D
 Acq: 27 Jan 2022 12:04

Tgt Ion: 95 Resp: 98610
 Ion Ratio Lower Upper
 95 100
 174 73.8 0.0 148.6
 176 72.1 0.0 141.4



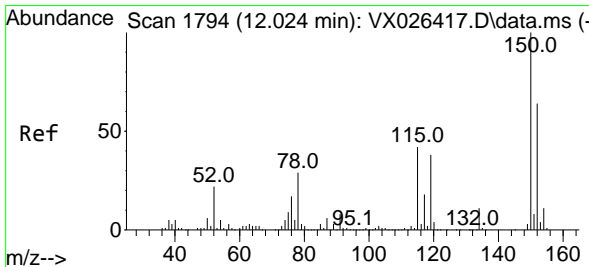
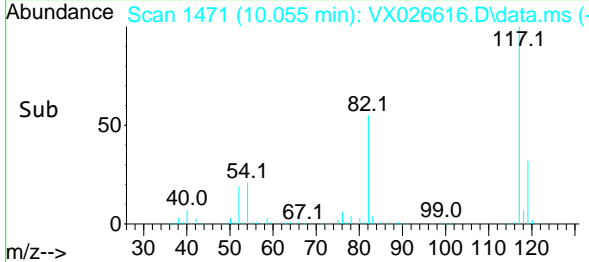
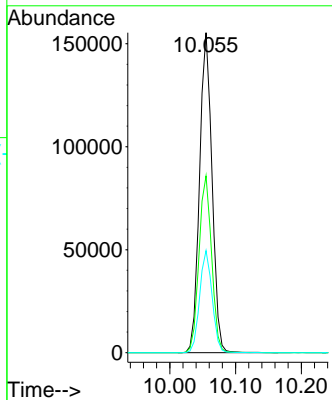
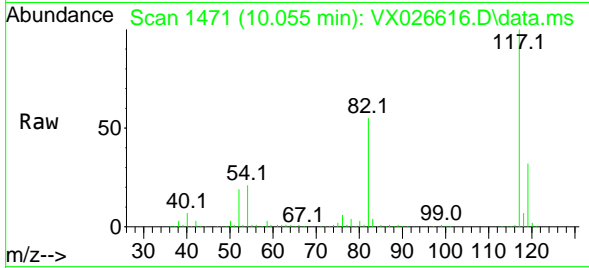


#63
 Chlorobenzene-d5
 Concen: 50.000 ug/l
 RT: 10.055 min Scan# 14
 Delta R.T. 0.000 min
 Lab File: VX026616.D
 Acq: 27 Jan 2022 12:04

Instrument : MSVOA_X
 ClientSampleId : MW-12R

Tgt Ion:117 Resp: 205016

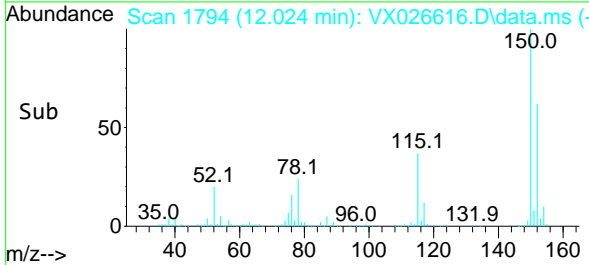
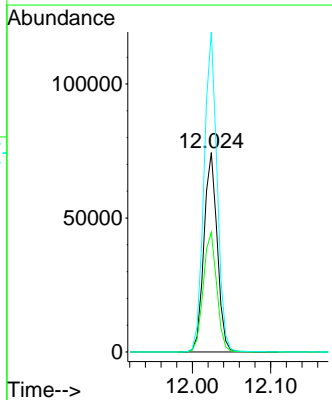
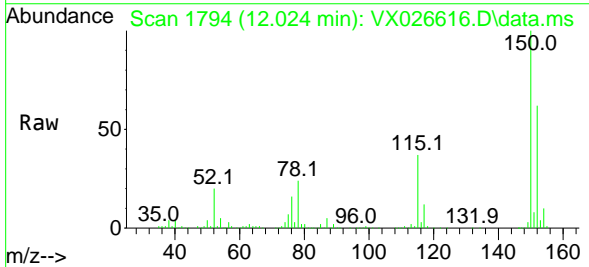
Ion	Ratio	Lower	Upper
117	100		
82	55.2	45.2	67.8
119	31.9	26.2	39.2

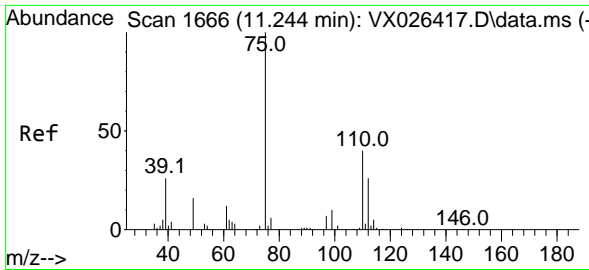


#72
 1,4-Dichlorobenzene-d4
 Concen: 50.000 ug/l
 RT: 12.024 min Scan# 1794
 Delta R.T. 0.000 min
 Lab File: VX026616.D
 Acq: 27 Jan 2022 12:04

Tgt Ion:152 Resp: 87531

Ion	Ratio	Lower	Upper
152	100		
115	60.9	44.2	132.6
150	157.9	0.0	348.2

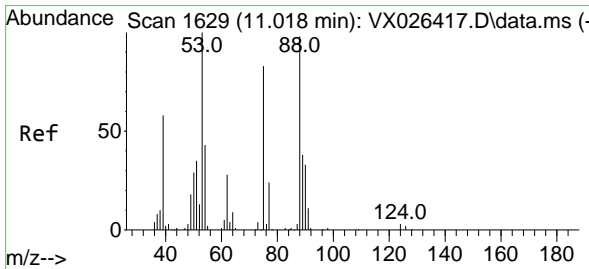
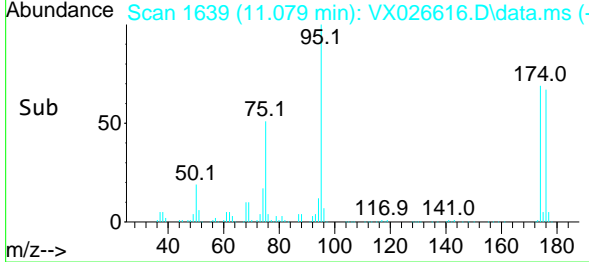
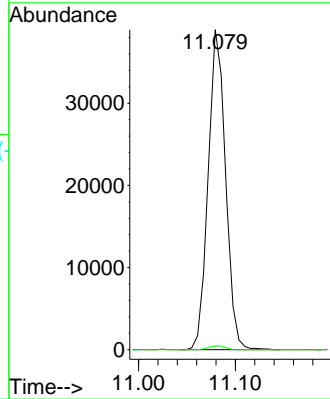
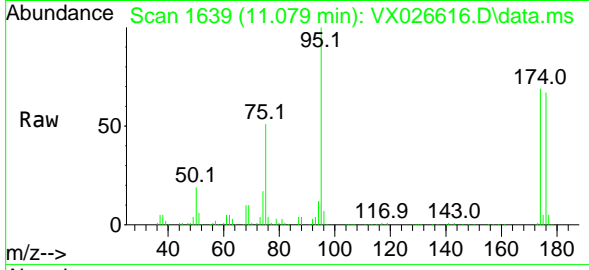




#76
 1,2,3-Trichloropropane
 Concen: 25.300 ug/l
 RT: 11.079 min Scan# 1639
 Delta R.T. -0.165 min
 Lab File: VX026616.D
 Acq: 27 Jan 2022 12:04

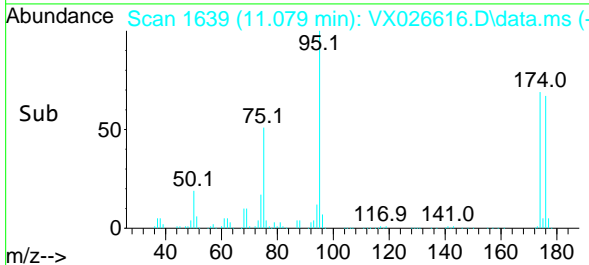
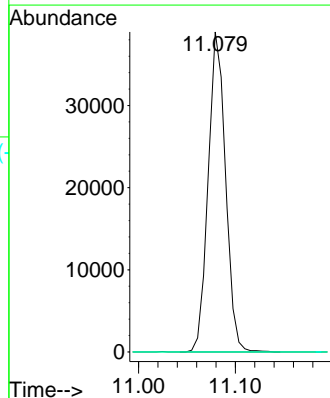
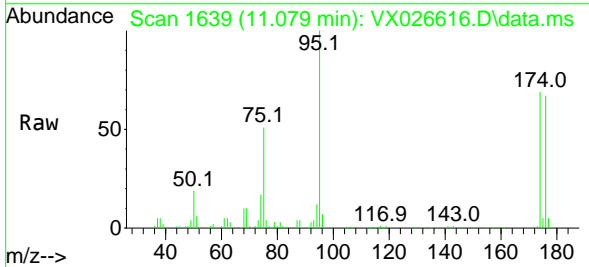
Instrument : MSVOA_X
 ClientSampleId : MW-12R

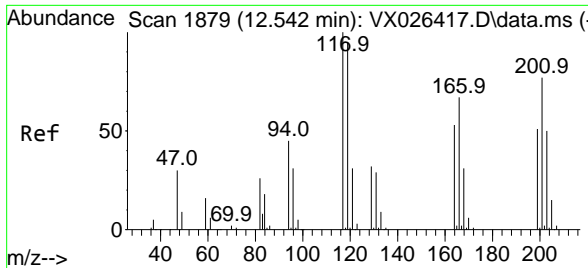
Tgt Ion: 75 Resp: 48759
 Ion Ratio Lower Upper
 75 100
 77 1.1 18.3 54.8#



#81
 trans-1,4-Dichloro-2-butene
 Concen: 76.842 ug/l
 RT: 11.079 min Scan# 1639
 Delta R.T. 0.061 min
 Lab File: VX026616.D
 Acq: 27 Jan 2022 12:04

Tgt Ion: 75 Resp: 48759
 Ion Ratio Lower Upper
 75 100
 53 0.0 94.0 141.0#
 89 0.0 37.0 55.4#





#90
 Hexachloroethane
 Concen: 2.875 ug/l
 RT: 12.701 min Scan# 11
 Delta R.T. 0.159 min
 Lab File: VX026616.D
 Acq: 27 Jan 2022 12:04

Instrument : MSVOA_X
 ClientSampleId : MW-12R

Tgt Ion:117 Resp: 729

Ion	Ratio	Lower	Upper
117	100		
201	0.0	35.6	106.8#

