

Data Path : Z:\voasrv\HPCHEM1\MSVOA_X\Data\VX012722\
 Data File : VX026638.D
 Acq On : 27 Jan 2022 20:30
 Operator : JC/MD
 Sample : N1297-05
 Misc : 5.0mL/MSVOA_X/WATER
 ALS Vial : 28 Sample Multiplier: 1

Instrument :
 MSVOA_X
 ClientSampleId :
 MW-14DB

Quant Time: Jan 28 04:28:25 2022
 Quant Method : Z:\voasrv\HPCHEM1\MSVOA_X\Method\82X011122W.M
 Quant Title : SW846 8260
 QLast Update : Tue Jan 11 14:45:13 2022
 Response via : Initial Calibration

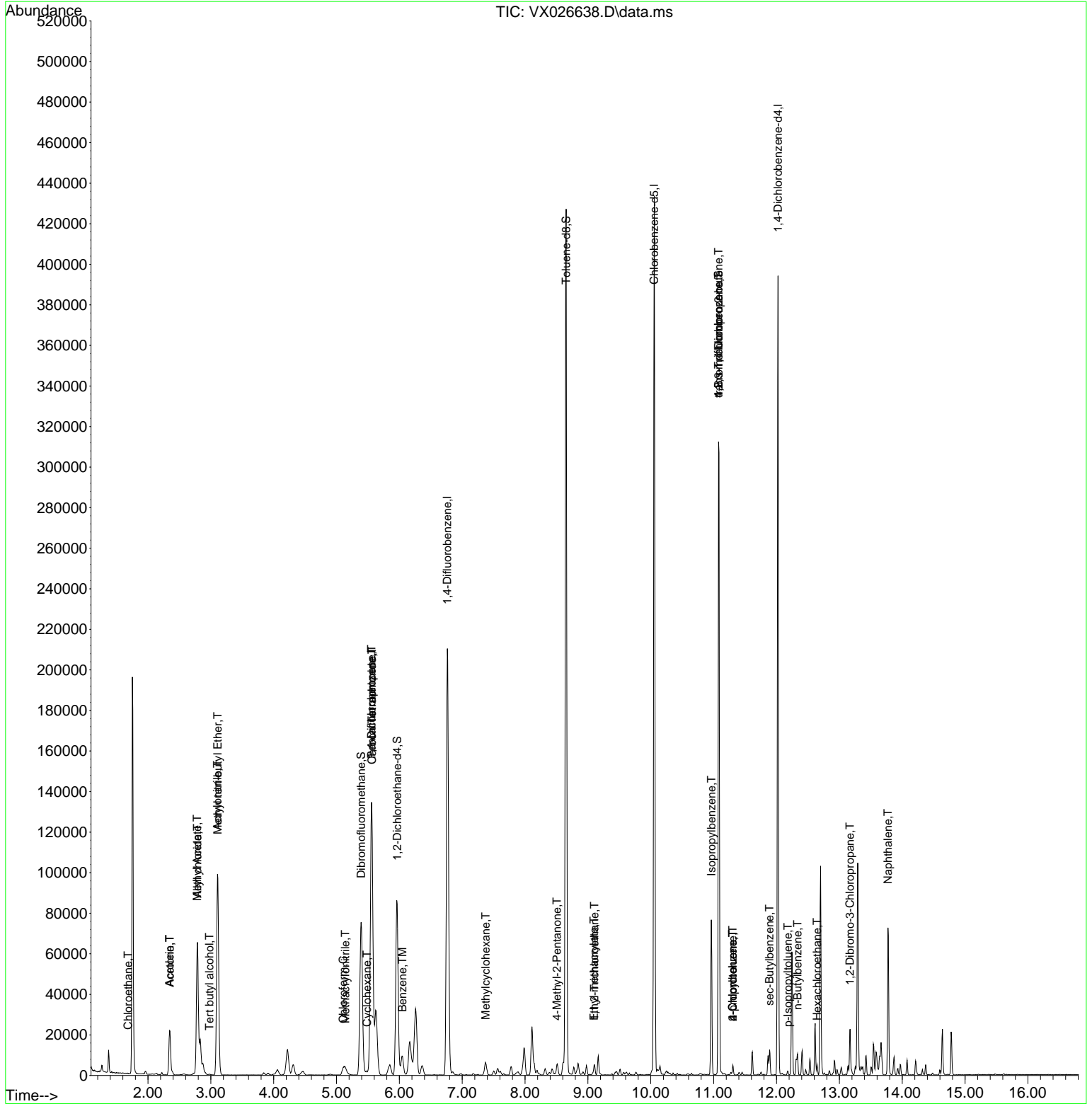
Compound	R.T.	QIon	Response	Conc	Units	Dev(Min)
Internal Standards						
1) Pentafluorobenzene	5.556	168	126120	50.000	ug/l	0.00
34) 1,4-Difluorobenzene	6.763	114	216619	50.000	ug/l	0.00
63) Chlorobenzene-d5	10.055	117	192203	50.000	ug/l	0.00
72) 1,4-Dichlorobenzene-d4	12.024	152	77008	50.000	ug/l	0.00
System Monitoring Compounds						
33) 1,2-Dichloroethane-d4	5.964	65	83321	47.293	ug/l	0.00
Spiked Amount	50.000	Range 78 - 117	Recovery	=	94.580%	
35) Dibromofluoromethane	5.391	113	67631	48.347	ug/l	0.00
Spiked Amount	50.000	Range 75 - 124	Recovery	=	96.700%	
50) Toluene-d8	8.653	98	253260	50.241	ug/l	0.00
Spiked Amount	50.000	Range 92 - 112	Recovery	=	100.480%	
62) 4-Bromofluorobenzene	11.079	95	88398	49.365	ug/l	0.00
Spiked Amount	50.000	Range 83 - 123	Recovery	=	98.720%	
Target Compounds						
						Qvalue
6) Chloroethane	1.685	64	151	0.208	ug/l #	43
11) Tert butyl alcohol	2.977	59	720	2.938	ug/l #	75
13) Acrolein	2.343	56	3110	11.942	ug/l #	77
14) Allyl chloride	2.788	41	23054	9.518	ug/l #	63
15) Acrylonitrile	3.105	53	2297	3.045	ug/l #	39
16) Acetone	2.349	43	8845	9.845	ug/l #	55
18) Methyl Acetate	2.782	43	47305	26.484	ug/l #	53
19) Methyl tert-butyl Ether	3.111	73	6645	1.390	ug/l #	1
30) Chloroform	5.105	83	2835	1.027	ug/l #	80
31) Cyclohexane	5.483	56	1326	0.510	ug/l #	90
36) 1,1-Dichloropropene	5.556	75	9948	4.505	ug/l #	50
38) Carbon Tetrachloride	5.562	117	13392	5.896	ug/l #	18
39) Methylcyclohexane	7.373	83	1898	0.713	ug/l #	61
40) Benzene	6.050	78	11292	1.850	ug/l	94
41) Methacrylonitrile	5.141	41	1270	1.004	ug/l #	52
51) 4-Methyl-2-Pentanone	8.507	43	462	0.216	ug/l #	37
55) 1,1,2-Trichloroethane	9.104	97	1842	1.261	ug/l #	20
56) Ethyl methacrylate	9.098	69	541	0.242	ug/l #	1
73) Isopropylbenzene	10.963	105	39611	6.275	ug/l	99
76) 1,2,3-Trichloropropane	11.079	75	43800	25.832	ug/l #	40
78) n-propylbenzene	11.305	91	3036	0.422	ug/l	100
79) 2-Chlorotoluene	11.305	91	3036	0.696	ug/l #	42
81) trans-1,4-Dichloro-2-b...	11.079	75	43800	78.355	ug/l #	3
82) 4-Chlorotoluene	11.305	91	3036	0.605	ug/l #	46
85) sec-Butylbenzene	11.890	105	6423	1.022	ug/l	99
86) p-Isopropyltoluene	12.183	119	1229	0.233	ug/l	96
89) n-Butylbenzene	12.335	91	5072	1.121	ug/l #	88
90) Hexachloroethane	12.646	117	1756	4.086	ug/l #	14
92) 1,2-Dibromo-3-Chloropr...	13.170	75	116	0.283	ug/l #	3
95) Naphthalene	13.774	128	45912	8.382	ug/l	99

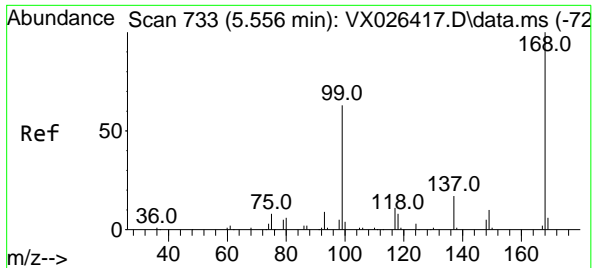
(#) = qualifier out of range (m) = manual integration (+) = signals summed

Data Path : Z:\voasrv\HPCHEM1\MSVOA_X\Data\VX012722\
 Data File : VX026638.D
 Acq On : 27 Jan 2022 20:30
 Operator : JC/MD
 Sample : N1297-05
 Misc : 5.0mL/MSVOA_X/WATER
 ALS Vial : 28 Sample Multiplier: 1

Instrument :
 MSVOA_X
 ClientSampleId :
 MW-14DB

Quant Time: Jan 28 04:28:25 2022
 Quant Method : Z:\voasrv\HPCHEM1\MSVOA_X\Method\82X011122W.M
 Quant Title : SW846 8260
 QLast Update : Tue Jan 11 14:45:13 2022
 Response via : Initial Calibration

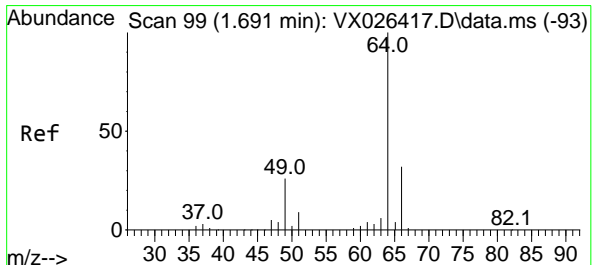
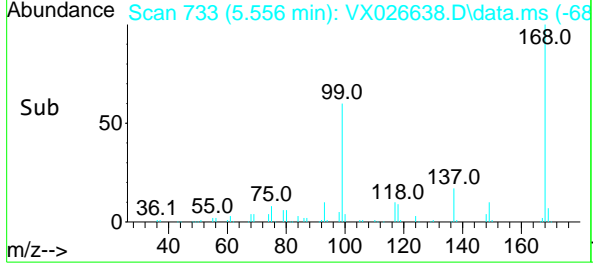
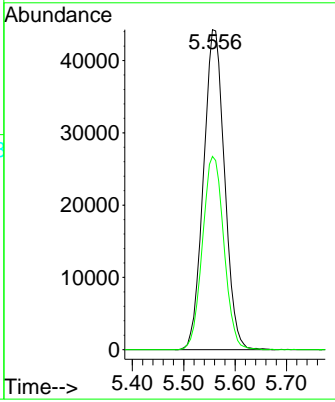
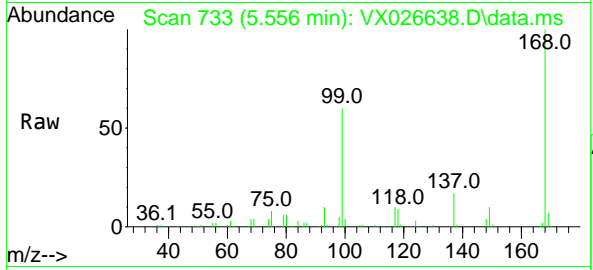




#1
 Pentafluorobenzene
 Concen: 50.000 ug/l
 RT: 5.556 min Scan# 71
 Delta R.T. -0.000 min
 Lab File: VX026638.D
 Acq: 27 Jan 2022 20:30

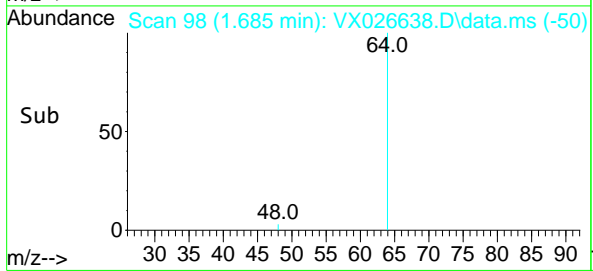
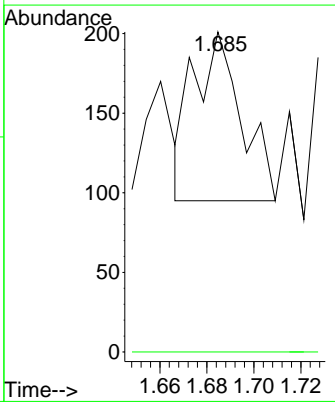
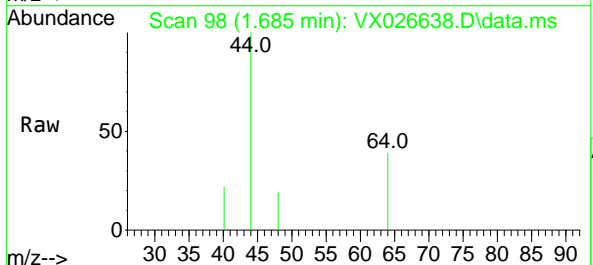
Instrument : MSVOA_X
 ClientSampleId : MW-14DB

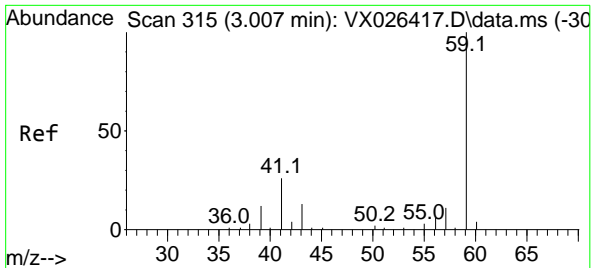
Tgt Ion:168 Resp: 126120
 Ion Ratio Lower Upper
 168 100
 99 60.4 50.3 75.5



#6
 Chloroethane
 Concen: 0.208 ug/l
 RT: 1.685 min Scan# 98
 Delta R.T. -0.006 min
 Lab File: VX026638.D
 Acq: 27 Jan 2022 20:30

Tgt Ion: 64 Resp: 151
 Ion Ratio Lower Upper
 64 100
 66 0.0 25.4 38.2#

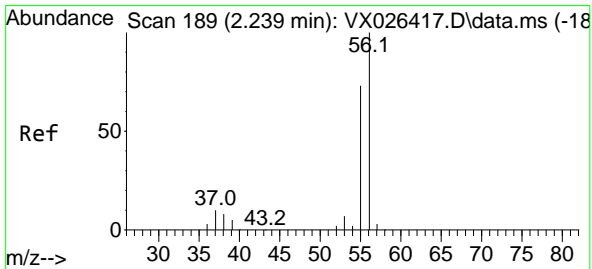
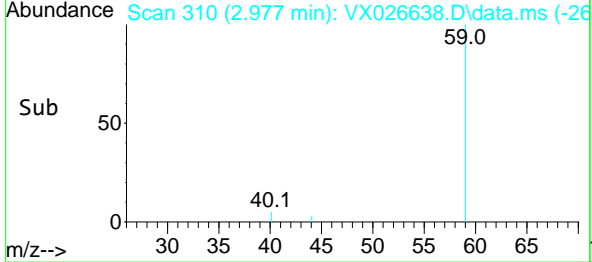
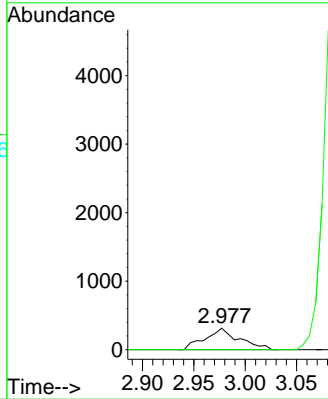
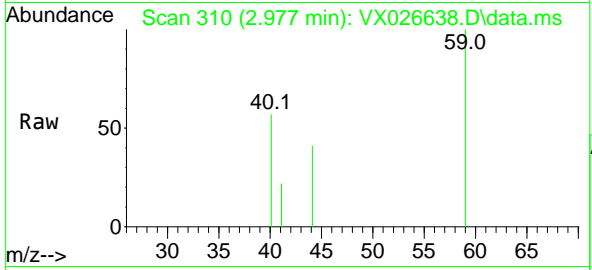




#11
 Tert butyl alcohol
 Concen: 2.938 ug/l
 RT: 2.977 min Scan# 31
 Delta R.T. -0.030 min
 Lab File: VX026638.D
 Acq: 27 Jan 2022 20:30

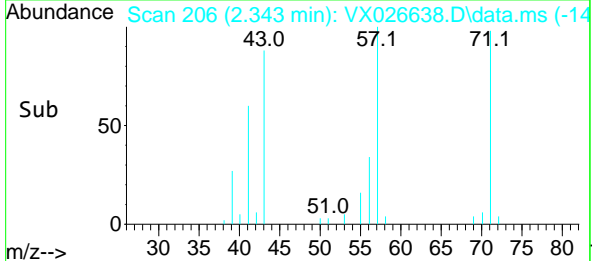
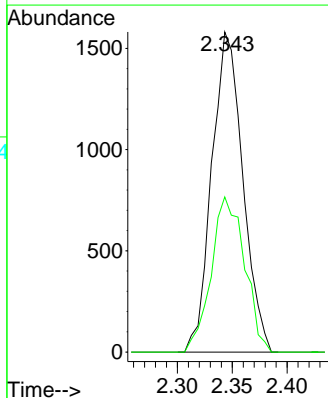
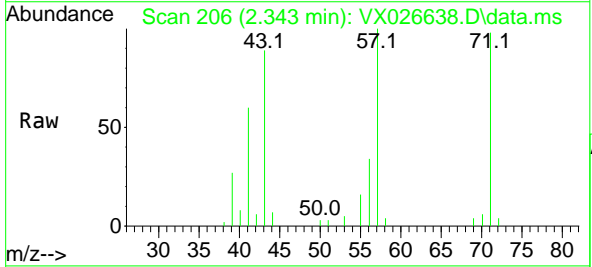
Instrument : MSVOA_X
 ClientSampleId : MW-14DB

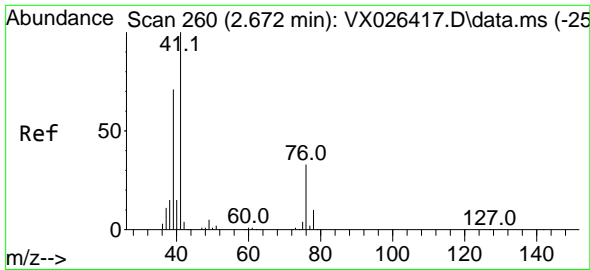
Tgt Ion: 59 Resp: 720
 Ion Ratio Lower Upper
 59 100
 57 0.0 7.2 10.8#



#13
 Acrolein
 Concen: 11.942 ug/l
 RT: 2.343 min Scan# 206
 Delta R.T. 0.104 min
 Lab File: VX026638.D
 Acq: 27 Jan 2022 20:30

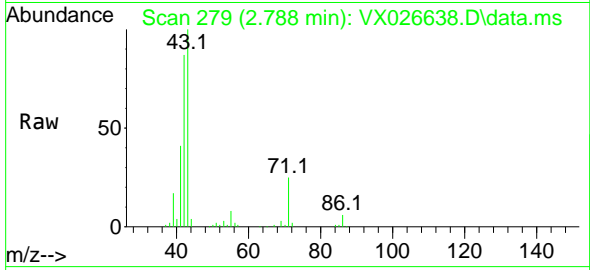
Tgt Ion: 56 Resp: 3110
 Ion Ratio Lower Upper
 56 100
 55 52.1 56.9 85.3#





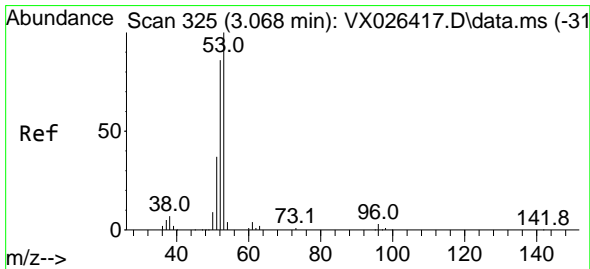
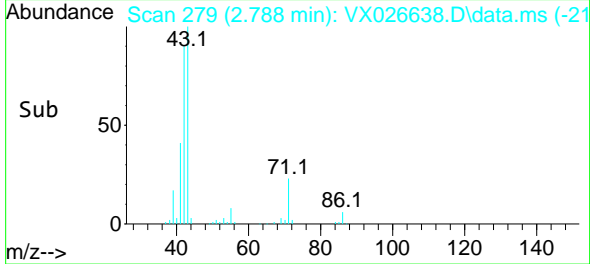
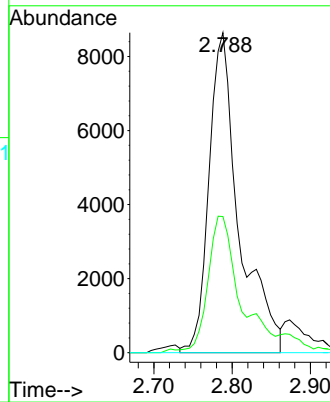
#14
 Allyl chloride
 Concen: 9.518 ug/l
 RT: 2.788 min Scan# 21
 Delta R.T. 0.116 min
 Lab File: VX026638.D
 Acq: 27 Jan 2022 20:30

Instrument : MSVOA_X
 ClientSampleId : MW-14DB



Tgt Ion: 41 Resp: 23054

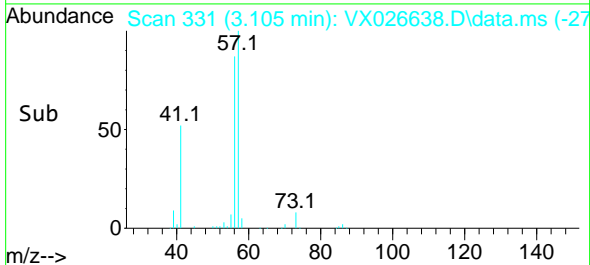
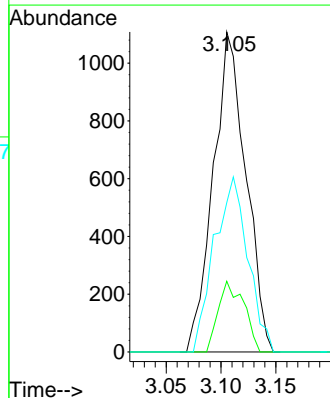
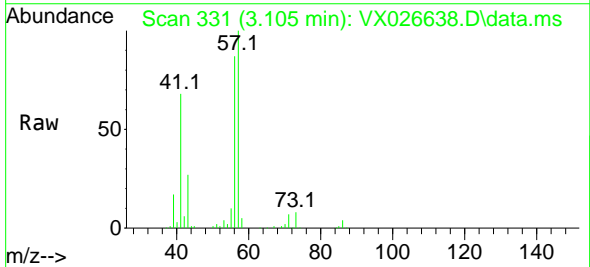
Ion	Ratio	Lower	Upper
41	100		
39	45.5	54.2	81.4#
76	0.0	25.2	37.8#

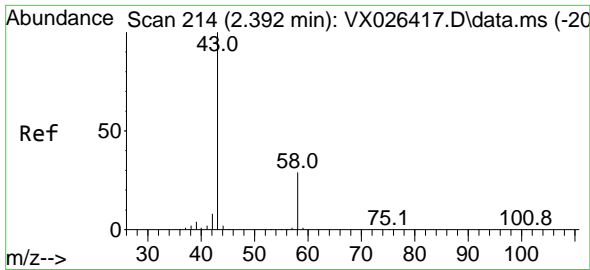


#15
 Acrylonitrile
 Concen: 3.045 ug/l
 RT: 3.105 min Scan# 331
 Delta R.T. 0.037 min
 Lab File: VX026638.D
 Acq: 27 Jan 2022 20:30

Tgt Ion: 53 Resp: 2297

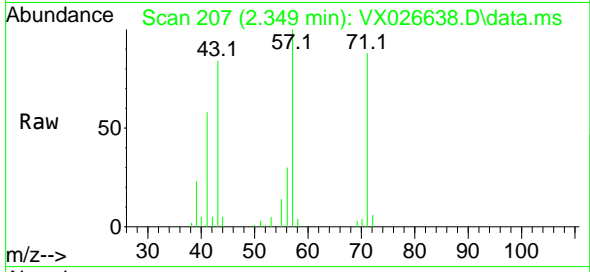
Ion	Ratio	Lower	Upper
53	100		
52	17.4	66.6	100.0#
51	56.2	29.5	44.3#



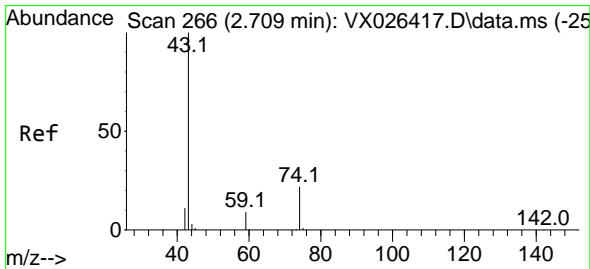
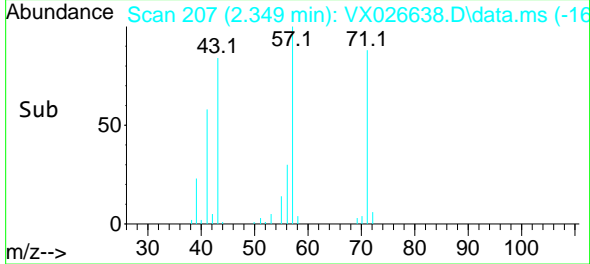
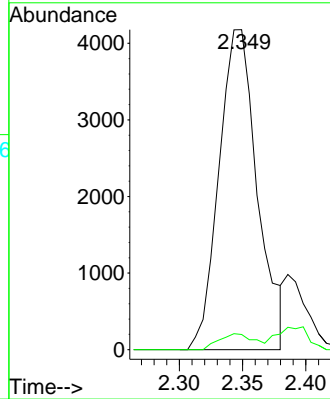


#16
 Acetone
 Concen: 9.845 ug/l
 RT: 2.349 min Scan# 207
 Delta R.T. -0.043 min
 Lab File: VX026638.D
 Acq: 27 Jan 2022 20:30

Instrument : MSVOA_X
 ClientSampleId : MW-14DB

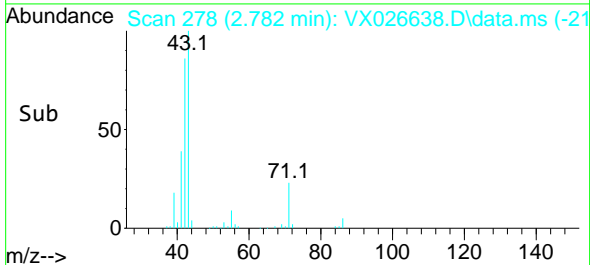
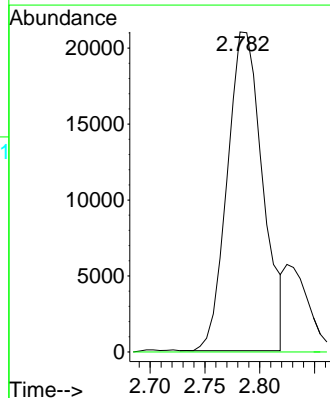
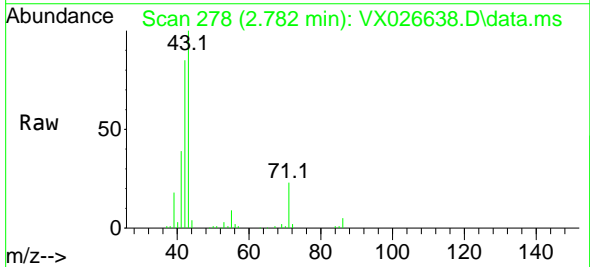


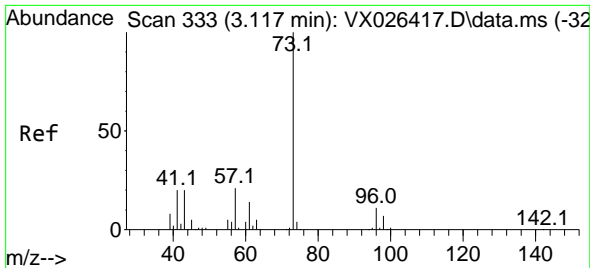
Tgt Ion: 43 Resp: 8845
 Ion Ratio Lower Upper
 43 100
 58 4.8 23.0 34.6#



#18
 Methyl Acetate
 Concen: 26.484 ug/l
 RT: 2.782 min Scan# 278
 Delta R.T. 0.073 min
 Lab File: VX026638.D
 Acq: 27 Jan 2022 20:30

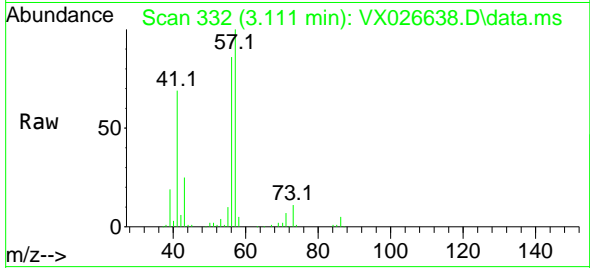
Tgt Ion: 43 Resp: 47305
 Ion Ratio Lower Upper
 43 100
 74 0.0 18.3 27.5#



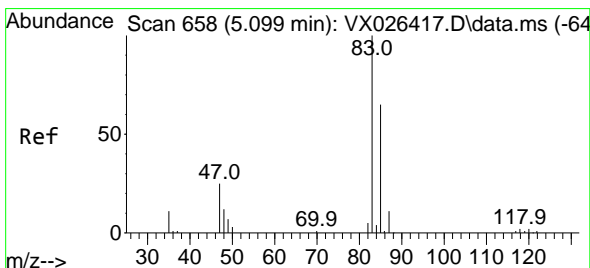
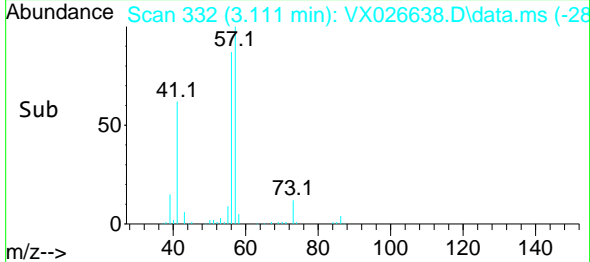
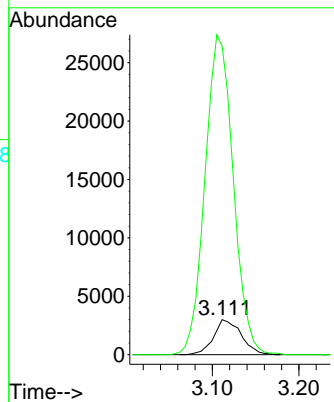


#19
 Methyl tert-butyl Ether
 Concen: 1.390 ug/l
 RT: 3.111 min Scan# 311
 Delta R.T. -0.006 min
 Lab File: VX026638.D
 Acq: 27 Jan 2022 20:30

Instrument : MSVOA_X
 ClientSampleId : MW-14DB

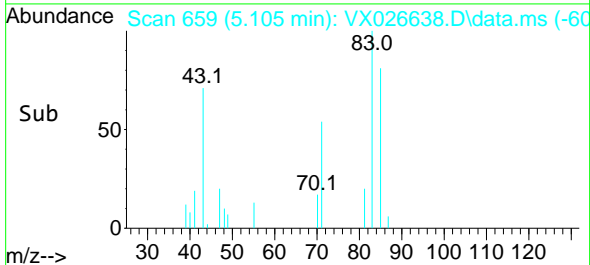
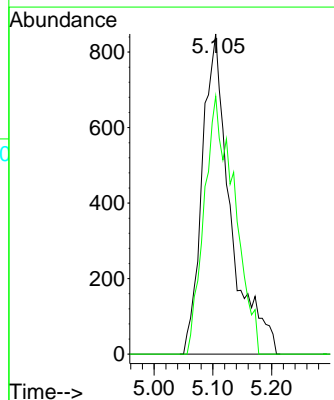
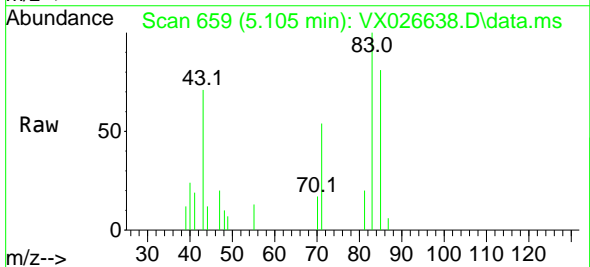


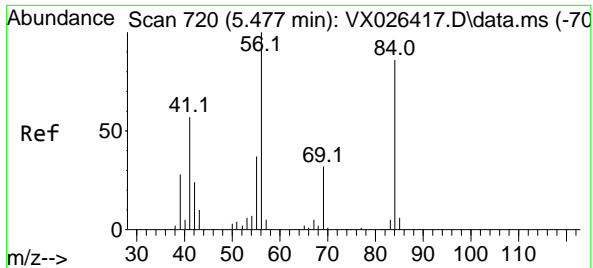
Tgt Ion: 73 Resp: 6645
 Ion Ratio Lower Upper
 73 100
 57 877.5 17.4 26.2#



#30
 Chloroform
 Concen: 1.027 ug/l
 RT: 5.105 min Scan# 659
 Delta R.T. 0.006 min
 Lab File: VX026638.D
 Acq: 27 Jan 2022 20:30

Tgt Ion: 83 Resp: 2835
 Ion Ratio Lower Upper
 83 100
 85 80.5 51.6 77.4#



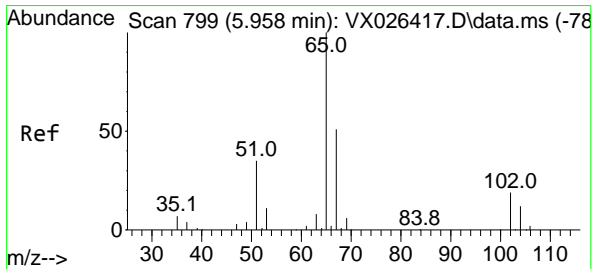
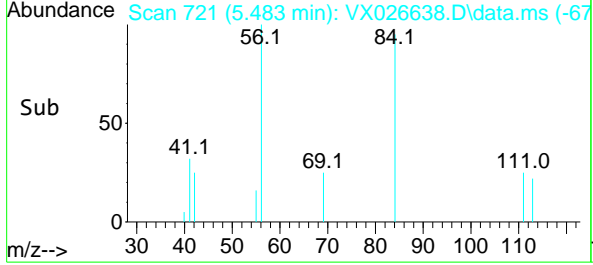
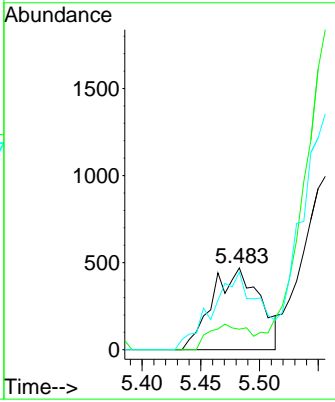
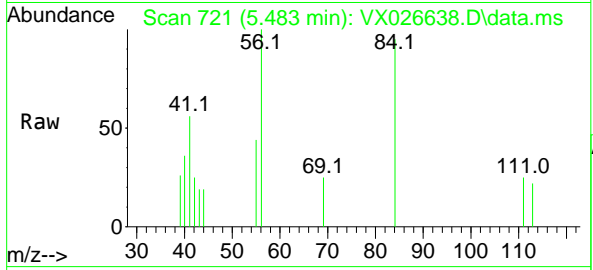


#31
 Cyclohexane
 Concen: 0.510 ug/l
 RT: 5.483 min Scan# 71
 Delta R.T. 0.006 min
 Lab File: VX026638.D
 Acq: 27 Jan 2022 20:30

Instrument : MSVOA_X
 ClientSampleId : MW-14DB

Tgt Ion: 56 Resp: 1326

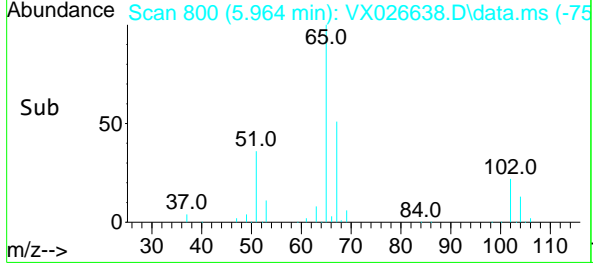
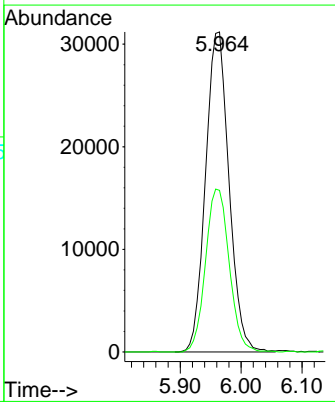
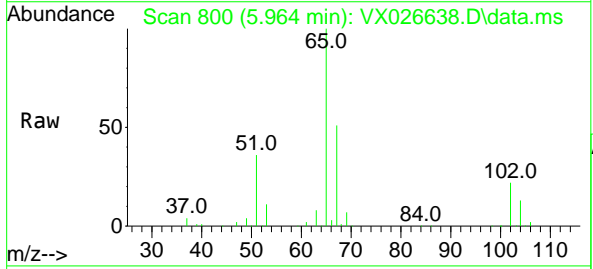
Ion	Ratio	Lower	Upper
56	100		
69	25.1	25.8	38.6#
84	94.9	68.9	103.3

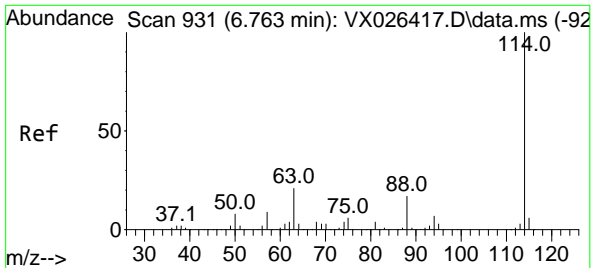


#33
 1,2-Dichloroethane-d4
 Concen: 47.293 ug/l
 RT: 5.964 min Scan# 800
 Delta R.T. 0.006 min
 Lab File: VX026638.D
 Acq: 27 Jan 2022 20:30

Tgt Ion: 65 Resp: 83321

Ion	Ratio	Lower	Upper
65	100		
67	51.6	0.0	100.8



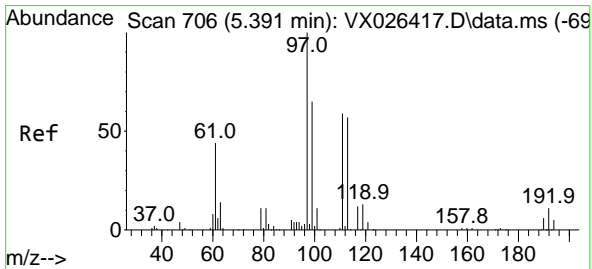
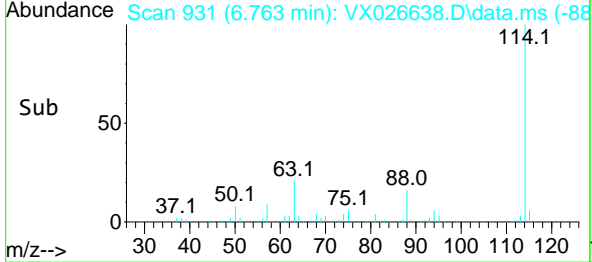
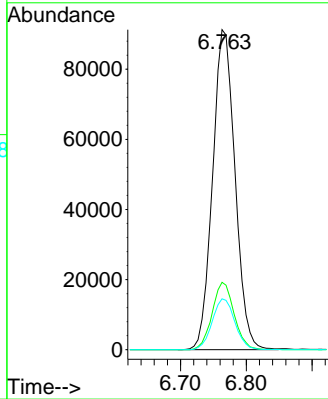
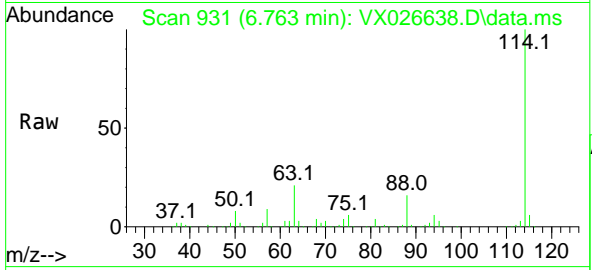


#34
 1,4-Difluorobenzene
 Concen: 50.000 ug/l
 RT: 6.763 min Scan# 91
 Delta R.T. 0.000 min
 Lab File: VX026638.D
 Acq: 27 Jan 2022 20:30

Instrument :
 MSVOA_X
 ClientSampleId :
 MW-14DB

Tgt Ion:114 Resp: 216619

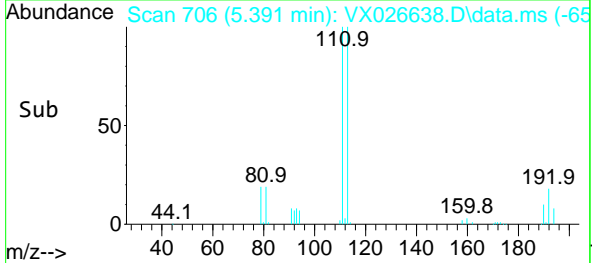
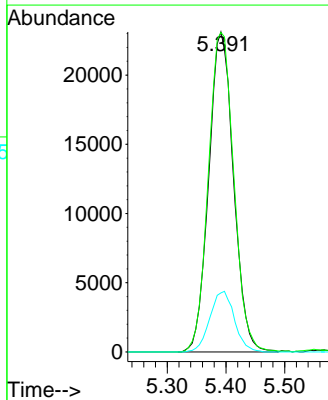
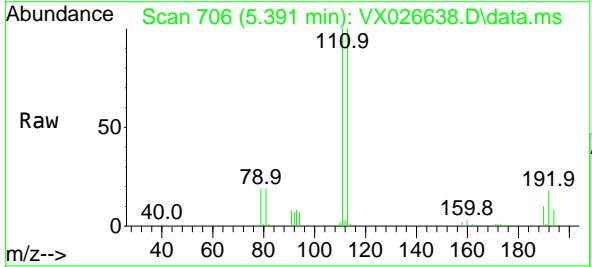
Ion	Ratio	Lower	Upper
114	100		
63	21.0	0.0	42.8
88	15.9	0.0	33.0

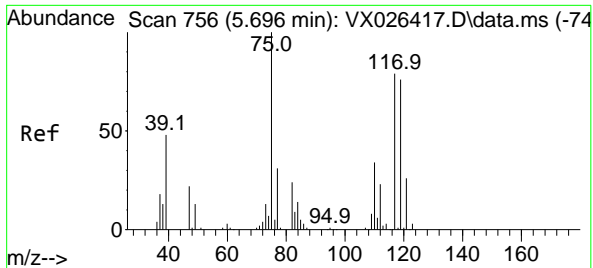


#35
 Dibromofluoromethane
 Concen: 48.347 ug/l
 RT: 5.391 min Scan# 706
 Delta R.T. 0.000 min
 Lab File: VX026638.D
 Acq: 27 Jan 2022 20:30

Tgt Ion:113 Resp: 67631

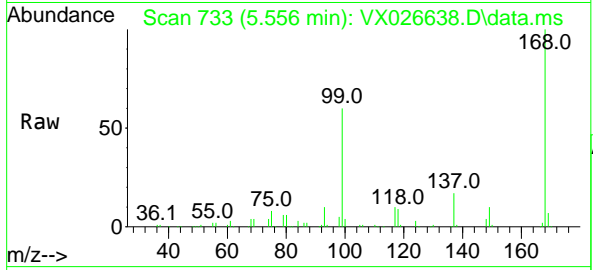
Ion	Ratio	Lower	Upper
113	100		
111	102.6	81.2	121.8
192	18.8	15.0	22.4



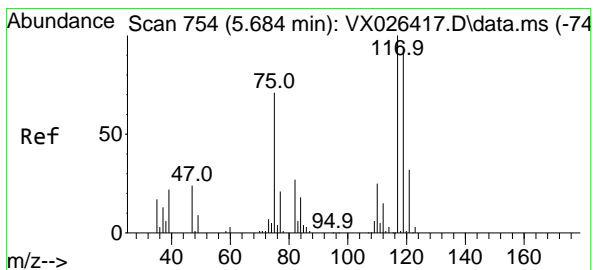
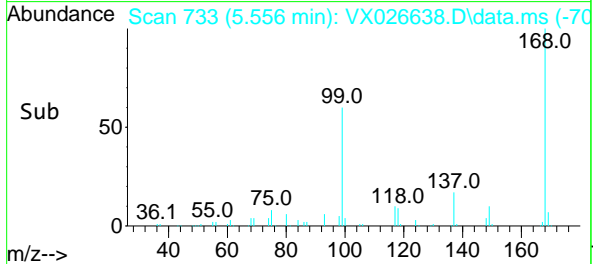
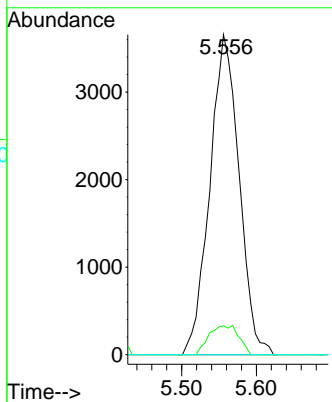


#36
 1,1-Dichloropropene
 Concen: 4.505 ug/l
 RT: 5.556 min Scan# 711
 Delta R.T. -0.140 min
 Lab File: VX026638.D
 Acq: 27 Jan 2022 20:30

Instrument : MSVOA_X
 ClientSampleId : MW-14DB

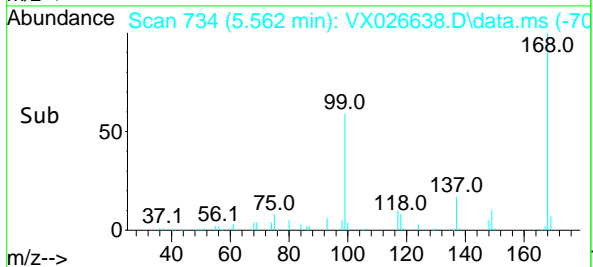
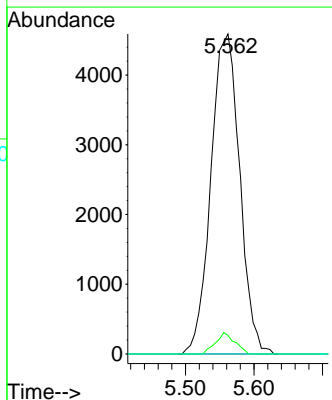
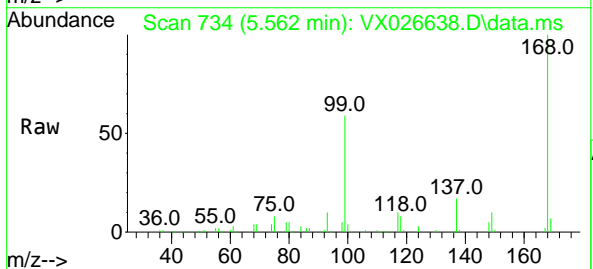


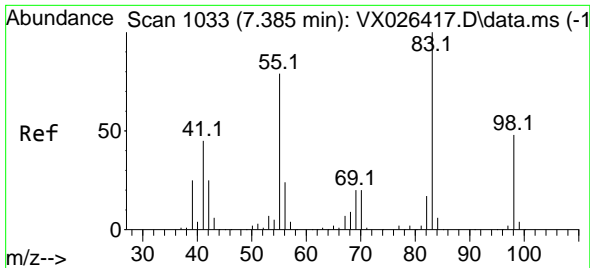
Tgt Ion: 75 Resp: 9948
 Ion Ratio Lower Upper
 75 100
 110 9.2 17.2 51.6#
 77 0.0 24.6 36.8#



#38
 Carbon Tetrachloride
 Concen: 5.896 ug/l
 RT: 5.562 min Scan# 734
 Delta R.T. -0.122 min
 Lab File: VX026638.D
 Acq: 27 Jan 2022 20:30

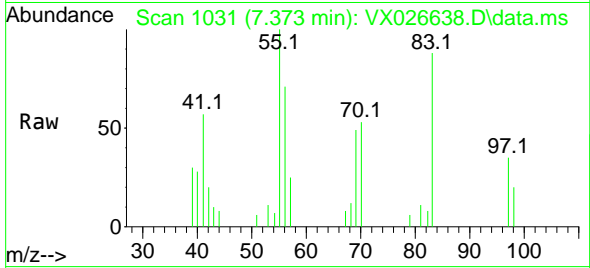
Tgt Ion: 117 Resp: 13392
 Ion Ratio Lower Upper
 117 100
 119 5.8 74.7 112.1#
 121 0.0 25.4 38.0#



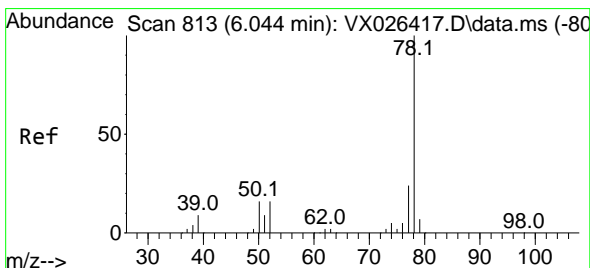
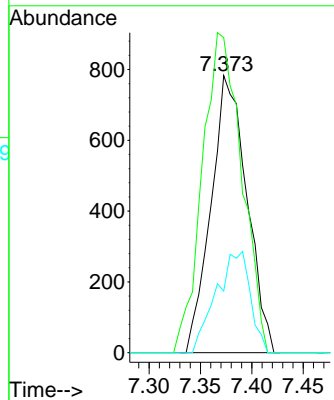
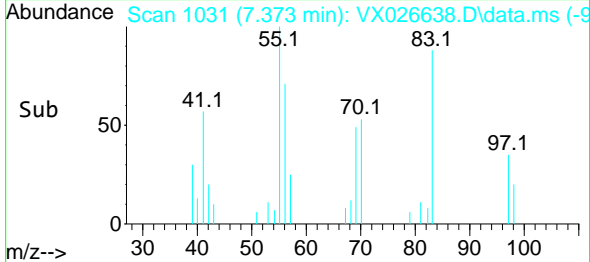


#39
 Methylcyclohexane
 Concen: 0.713 ug/l
 RT: 7.373 min Scan# 1031
 Delta R.T. -0.012 min
 Lab File: VX026638.D
 Acq: 27 Jan 2022 20:30

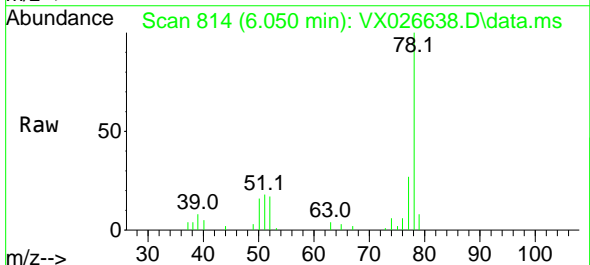
Instrument : MSVOA_X
 ClientSampleId : MW-14DB



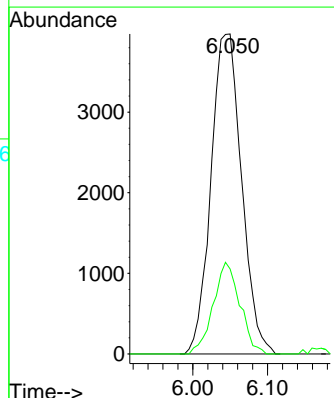
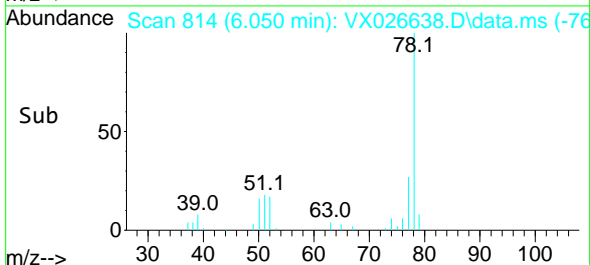
Tgt Ion: 83 Resp: 1898
 Ion Ratio Lower Upper
 83 100
 55 113.7 63.6 95.4#
 98 22.2 38.4 57.6#

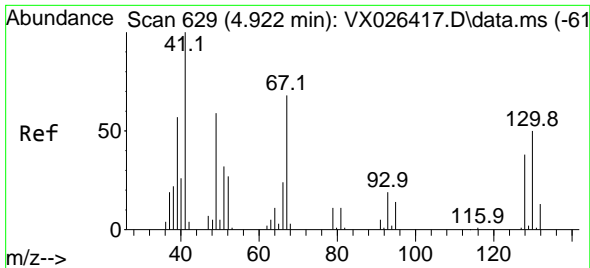


#40
 Benzene
 Concen: 1.850 ug/l
 RT: 6.050 min Scan# 814
 Delta R.T. 0.006 min
 Lab File: VX026638.D
 Acq: 27 Jan 2022 20:30



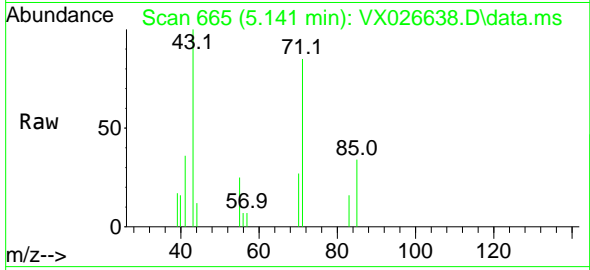
Tgt Ion: 78 Resp: 11292
 Ion Ratio Lower Upper
 78 100
 77 26.6 18.9 28.3





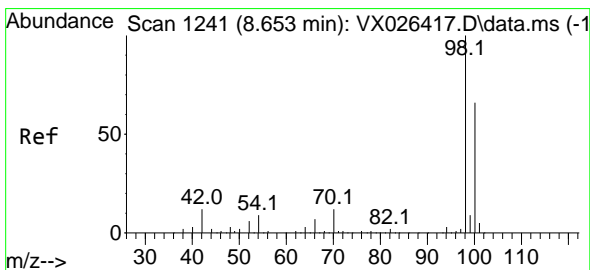
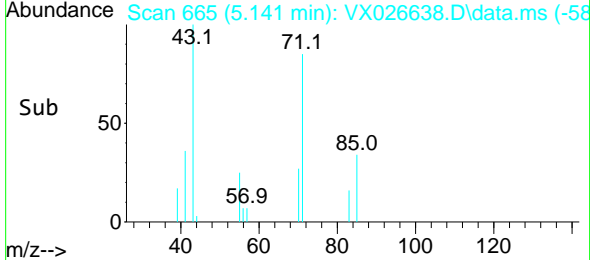
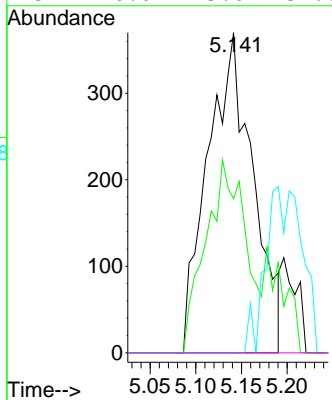
#41
 Methacrylonitrile
 Concen: 1.004 ug/l
 RT: 5.141 min Scan# 60
 Delta R.T. 0.220 min
 Lab File: VX026638.D
 Acq: 27 Jan 2022 20:30

Instrument : MSVOA_X
 ClientSampleId : MW-14DB



Tgt Ion: 41 Resp: 1270

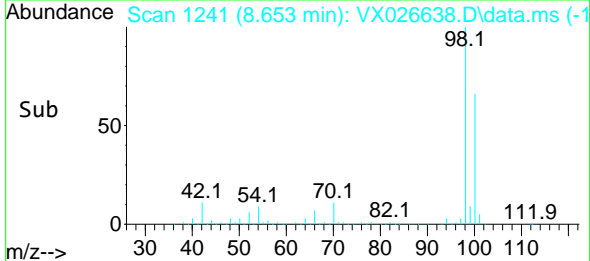
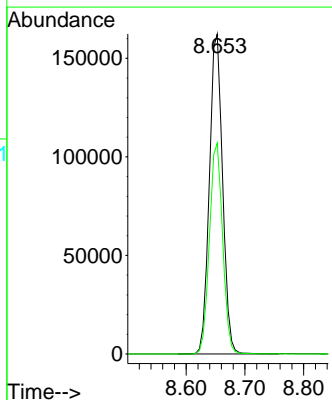
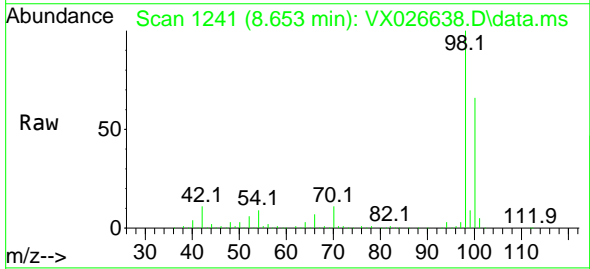
Ion	Ratio	Lower	Upper
41	100		
39	53.6	45.4	68.0
67	0.0	53.2	79.8#
52	0.0	23.0	34.6#

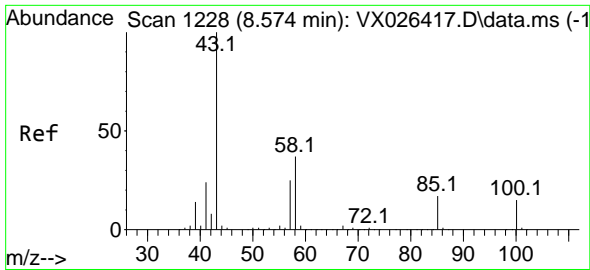


#50
 Toluene-d8
 Concen: 50.241 ug/l
 RT: 8.653 min Scan# 1241
 Delta R.T. 0.000 min
 Lab File: VX026638.D
 Acq: 27 Jan 2022 20:30

Tgt Ion: 98 Resp: 253260

Ion	Ratio	Lower	Upper
98	100		
100	65.8	53.2	79.8

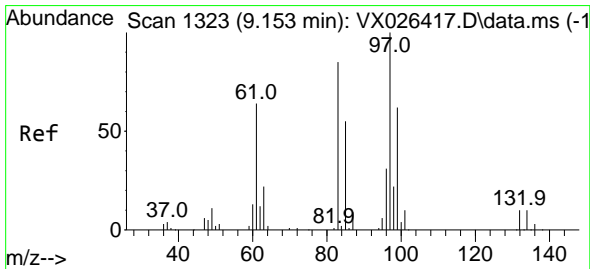
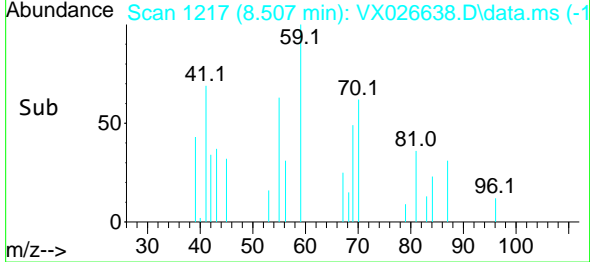
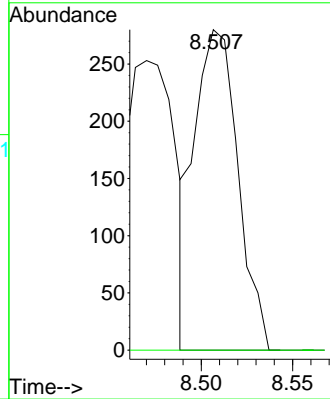
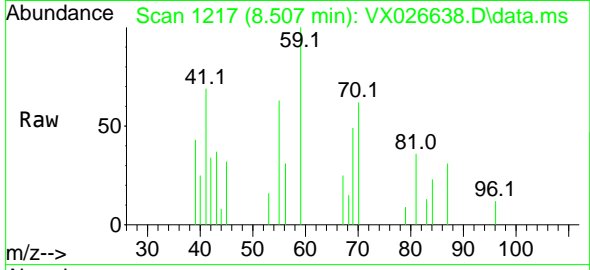




#51
 4-Methyl-2-Pentanone
 Concen: 0.216 ug/l
 RT: 8.507 min Scan# 1115
 Delta R.T. -0.067 min
 Lab File: VX026638.D
 Acq: 27 Jan 2022 20:30

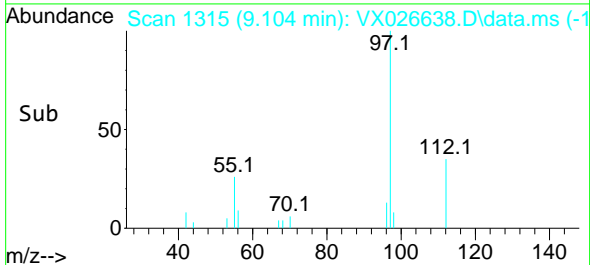
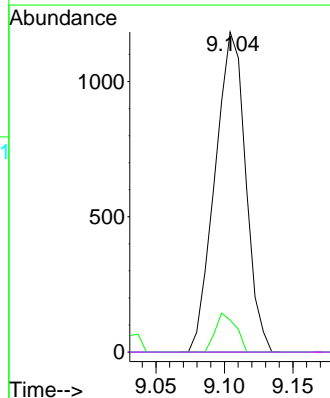
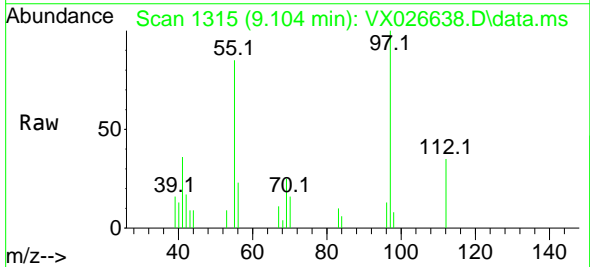
Instrument : MSVOA_X
 ClientSampleId : MW-14DB

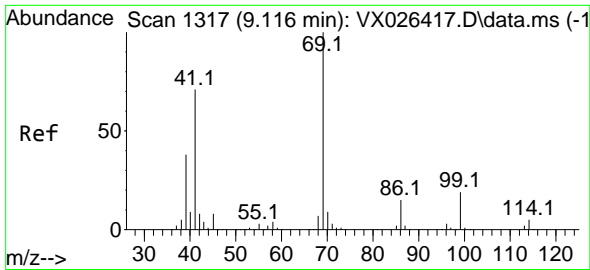
Tgt Ion: 43 Resp: 462
 Ion Ratio Lower Upper
 43 100
 58 0.0 30.5 45.7#



#55
 1,1,2-Trichloroethane
 Concen: 1.261 ug/l
 RT: 9.104 min Scan# 1315
 Delta R.T. -0.049 min
 Lab File: VX026638.D
 Acq: 27 Jan 2022 20:30

Tgt Ion: 97 Resp: 1842
 Ion Ratio Lower Upper
 97 100
 83 10.0 68.4 102.6#
 85 0.0 44.0 66.0#
 99 0.0 49.8 74.6#



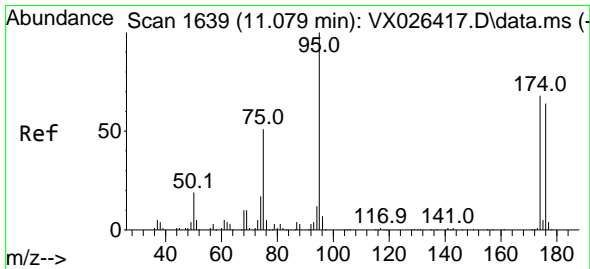
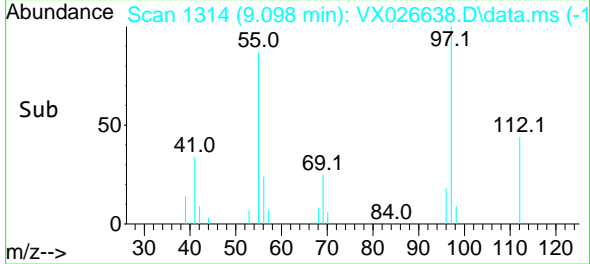
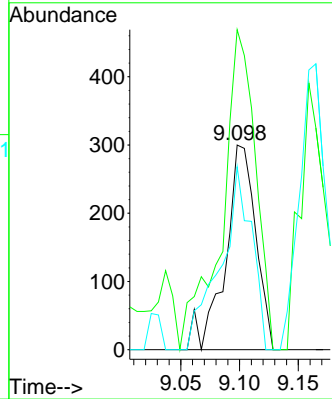
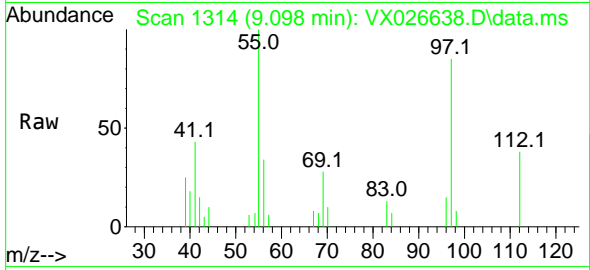


#56
 Ethyl methacrylate
 Concen: 0.242 ug/l
 RT: 9.098 min Scan# 1111
 Delta R.T. -0.018 min
 Lab File: VX026638.D
 Acq: 27 Jan 2022 20:30

Instrument : MSVOA_X
 ClientSampleId : MW-14DB

Tgt Ion: 69 Resp: 541

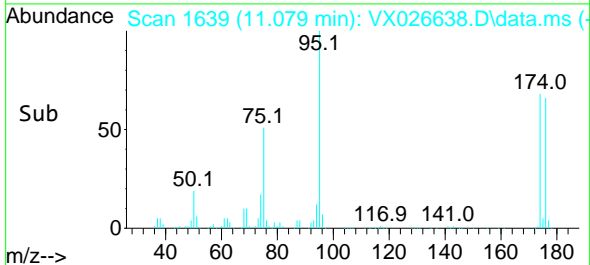
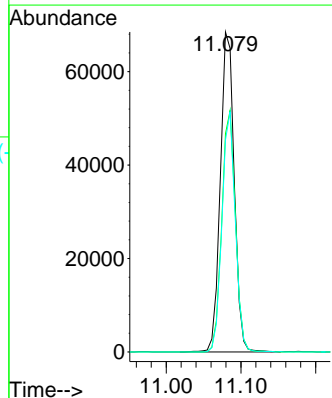
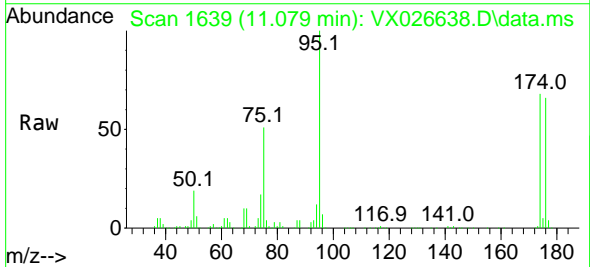
Ion	Ratio	Lower	Upper
69	100		
41	172.1	57.2	85.8#
39	91.7	30.9	46.3#

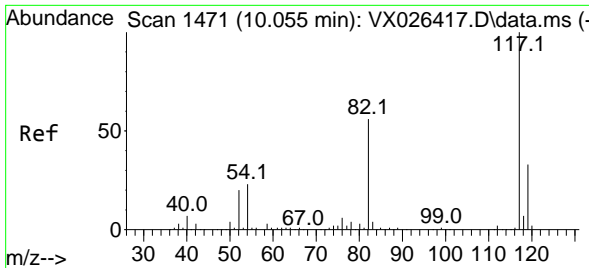


#62
 4-Bromofluorobenzene
 Concen: 49.365 ug/l
 RT: 11.079 min Scan# 1639
 Delta R.T. 0.000 min
 Lab File: VX026638.D
 Acq: 27 Jan 2022 20:30

Tgt Ion: 95 Resp: 88398

Ion	Ratio	Lower	Upper
95	100		
174	74.0	0.0	148.6
176	72.0	0.0	141.4

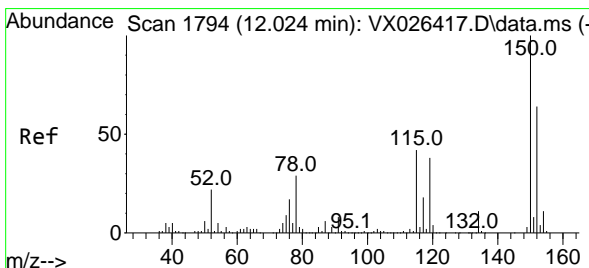
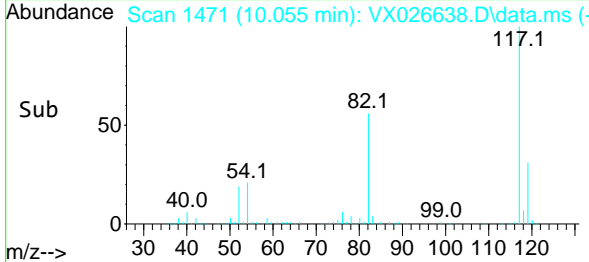
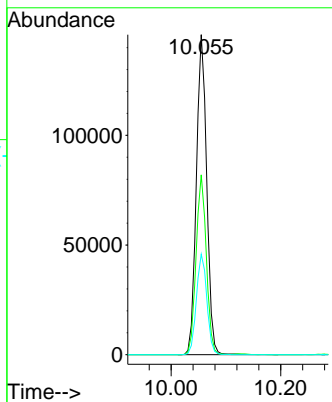
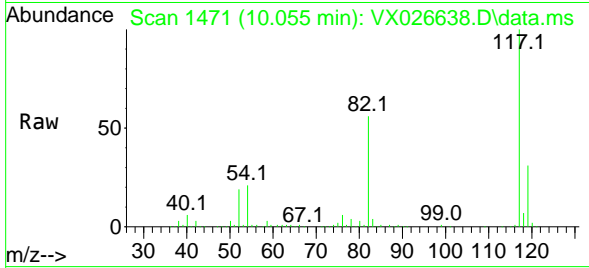




#63
 Chlorobenzene-d5
 Concen: 50.000 ug/l
 RT: 10.055 min Scan# 14
 Delta R.T. 0.000 min
 Lab File: VX026638.D
 Acq: 27 Jan 2022 20:30

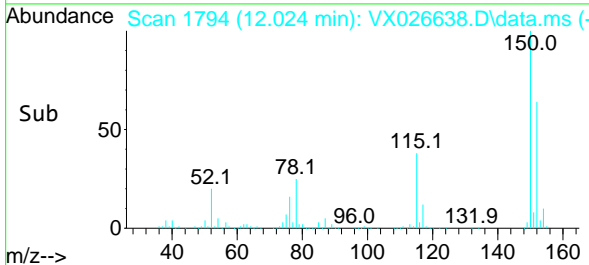
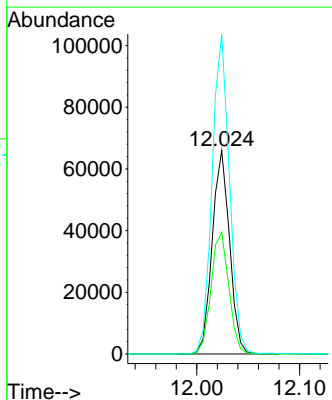
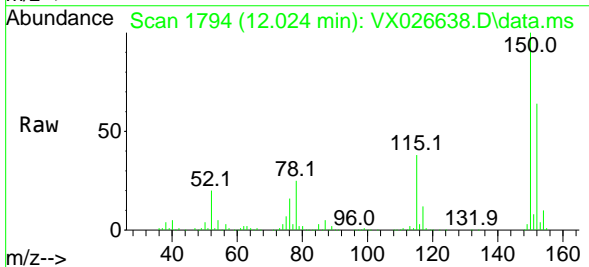
Instrument : MSVOA_X
 ClientSampleId : MW-14DB

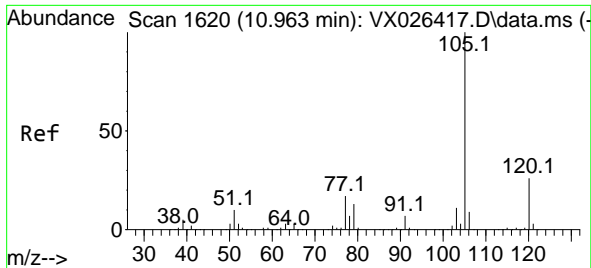
Tgt Ion	Resp	Lower	Upper
117	192203		
117	100		
82	56.2	45.2	67.8
119	31.4	26.2	39.2



#72
 1,4-Dichlorobenzene-d4
 Concen: 50.000 ug/l
 RT: 12.024 min Scan# 1794
 Delta R.T. 0.000 min
 Lab File: VX026638.D
 Acq: 27 Jan 2022 20:30

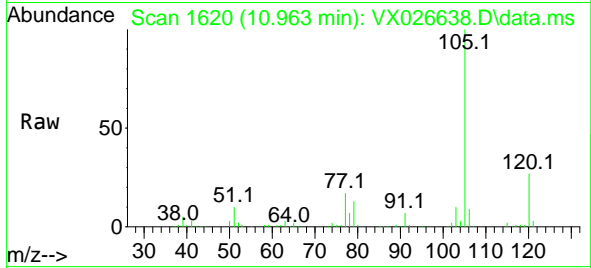
Tgt Ion	Resp	Lower	Upper
152	77008		
152	100		
115	61.6	44.2	132.6
150	157.6	0.0	348.2



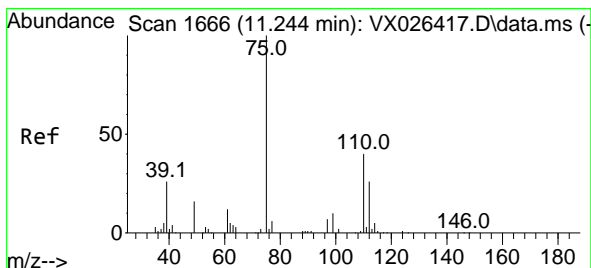
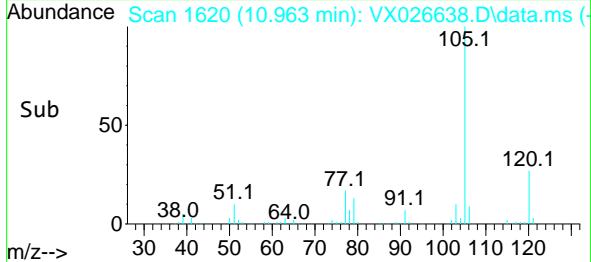
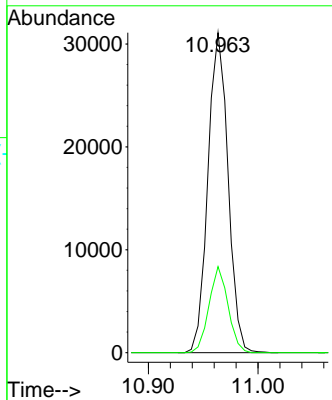


#73
 Isopropylbenzene
 Concen: 6.275 ug/l
 RT: 10.963 min Scan# 1639
 Delta R.T. 0.000 min
 Lab File: VX026638.D
 Acq: 27 Jan 2022 20:30

Instrument : MSVOA_X
 ClientSampleId : MW-14DB

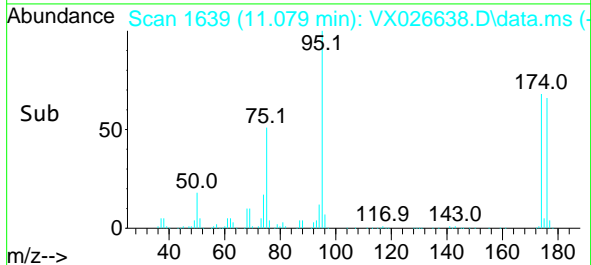
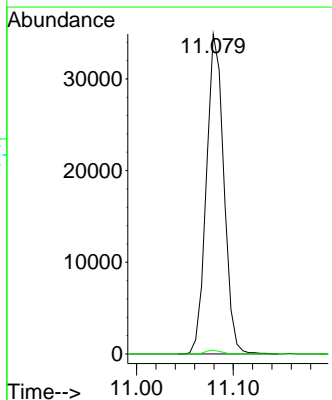
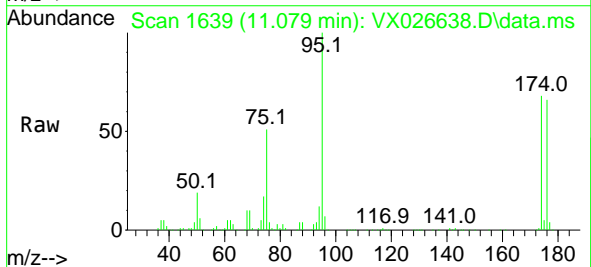


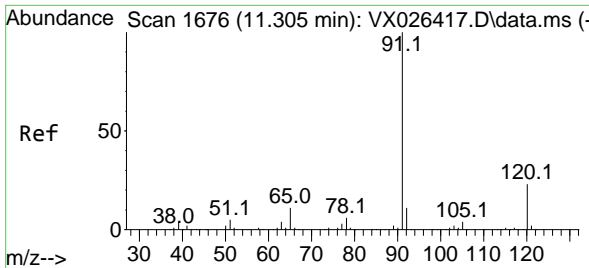
Tgt Ion: 105 Resp: 39611
 Ion Ratio Lower Upper
 105 100
 120 25.4 13.1 39.1



#76
 1,2,3-Trichloropropane
 Concen: 25.832 ug/l
 RT: 11.079 min Scan# 1639
 Delta R.T. -0.165 min
 Lab File: VX026638.D
 Acq: 27 Jan 2022 20:30

Tgt Ion: 75 Resp: 43800
 Ion Ratio Lower Upper
 75 100
 77 1.0 18.3 54.8#

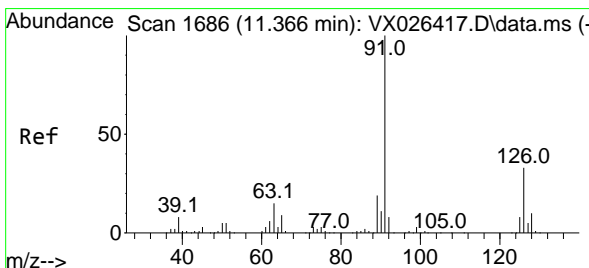
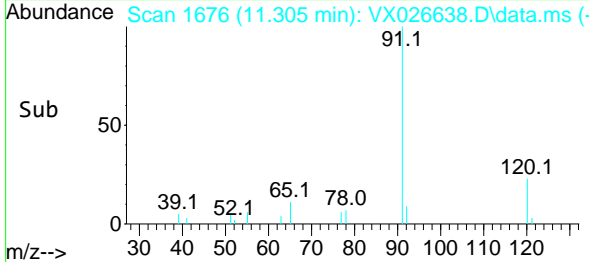
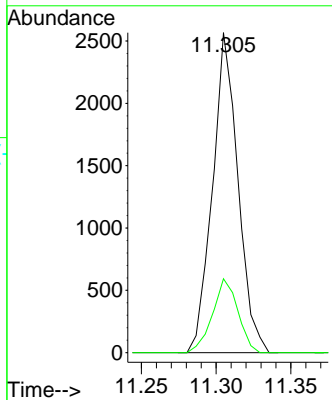
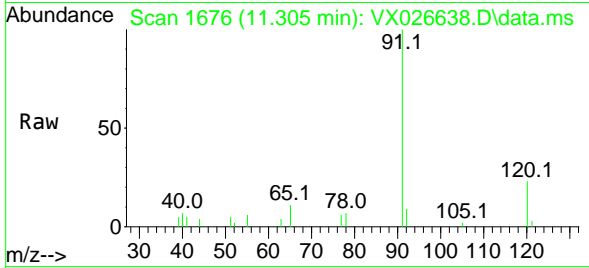




#78
 n-propylbenzene
 Concen: 0.422 ug/l
 RT: 11.305 min Scan# 1676
 Delta R.T. 0.000 min
 Lab File: VX026638.D
 Acq: 27 Jan 2022 20:30

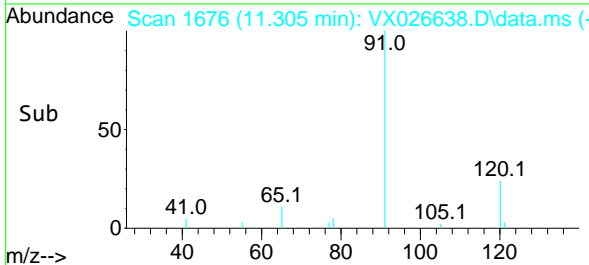
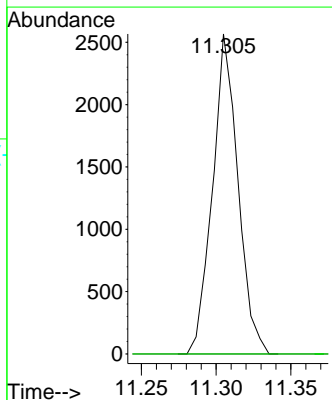
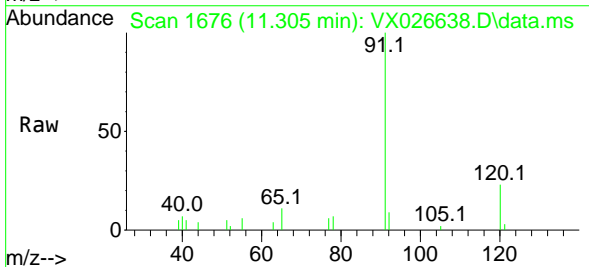
Instrument : MSVOA_X
 ClientSampleId : MW-14DB

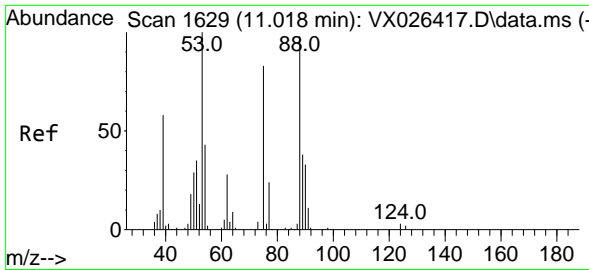
Tgt Ion: 91 Resp: 3036
 Ion Ratio Lower Upper
 91 100
 120 23.0 11.6 34.7



#79
 2-Chlorotoluene
 Concen: 0.696 ug/l
 RT: 11.305 min Scan# 1676
 Delta R.T. -0.061 min
 Lab File: VX026638.D
 Acq: 27 Jan 2022 20:30

Tgt Ion: 91 Resp: 3036
 Ion Ratio Lower Upper
 91 100
 126 0.0 16.4 49.2#

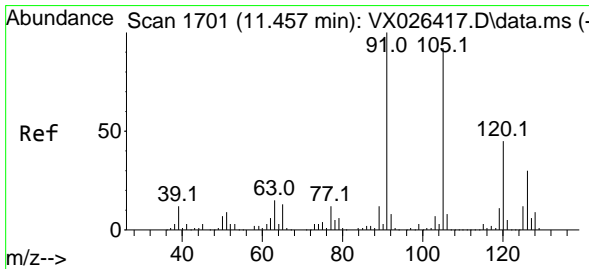
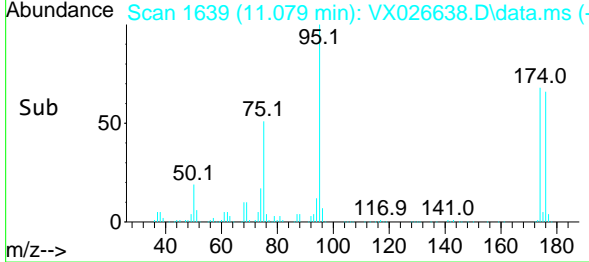
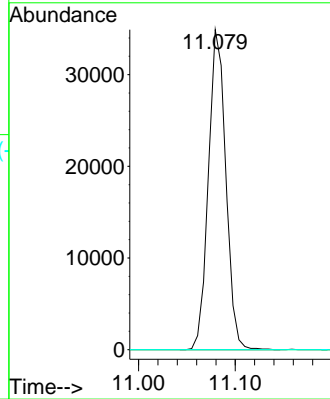
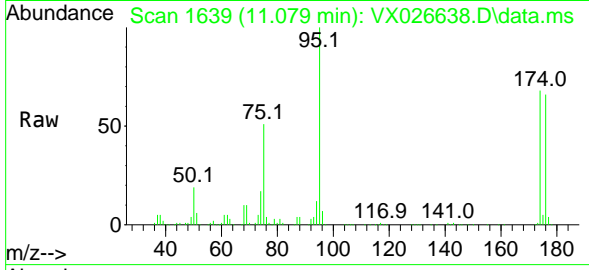




#81
 trans-1,4-Dichloro-2-butene
 Concen: 78.355 ug/l
 RT: 11.079 min Scan# 1639
 Delta R.T. 0.061 min
 Lab File: VX026638.D
 Acq: 27 Jan 2022 20:30

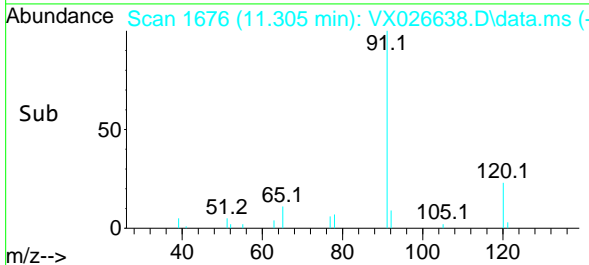
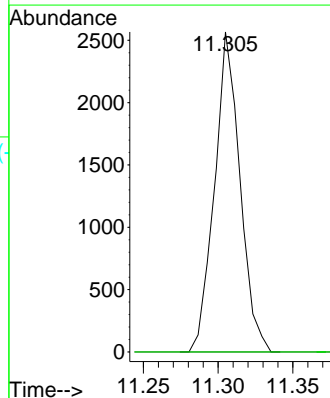
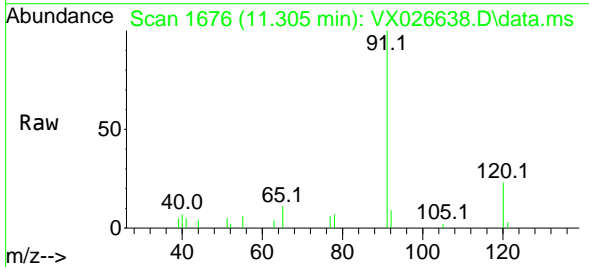
Instrument :
 MSVOA_X
 ClientSampleId :
 MW-14DB

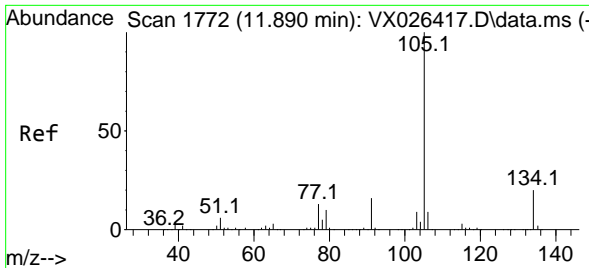
Tgt Ion: 75 Resp: 43800
 Ion Ratio Lower Upper
 75 100
 53 0.0 94.0 141.0#
 89 0.0 37.0 55.4#



#82
 4-Chlorotoluene
 Concen: 0.605 ug/l
 RT: 11.305 min Scan# 1676
 Delta R.T. -0.152 min
 Lab File: VX026638.D
 Acq: 27 Jan 2022 20:30

Tgt Ion: 91 Resp: 3036
 Ion Ratio Lower Upper
 91 100
 126 0.0 14.1 42.4#

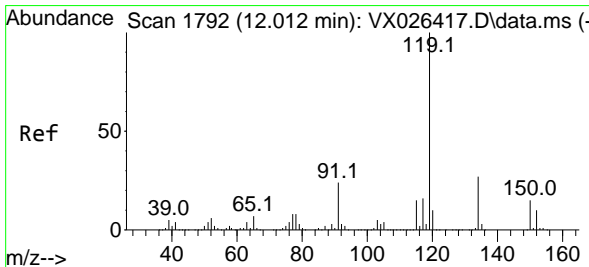
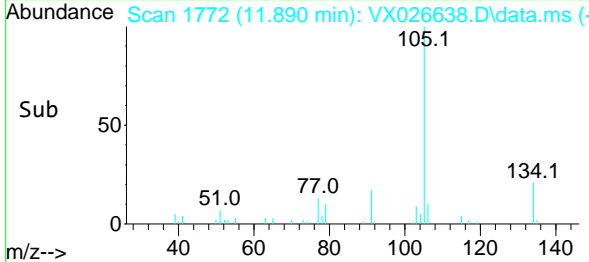
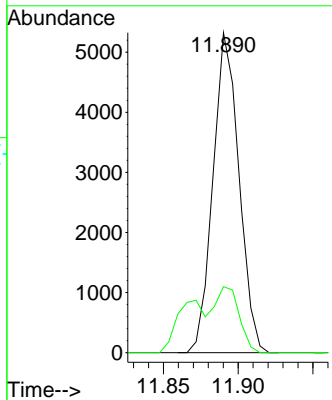
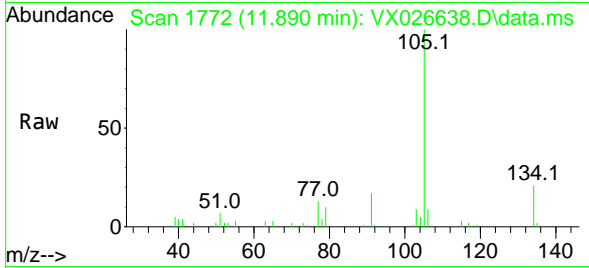




#85
 sec-Butylbenzene
 Concen: 1.022 ug/l
 RT: 11.890 min Scan# 1111
 Delta R.T. 0.000 min
 Lab File: VX026638.D
 Acq: 27 Jan 2022 20:30

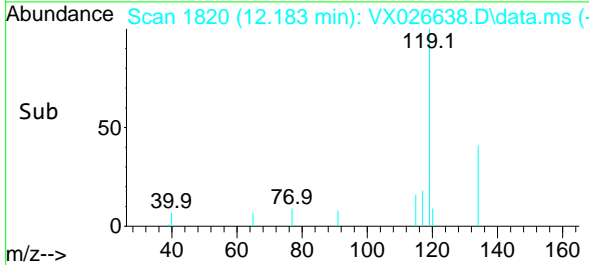
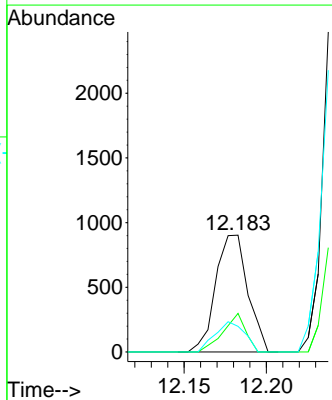
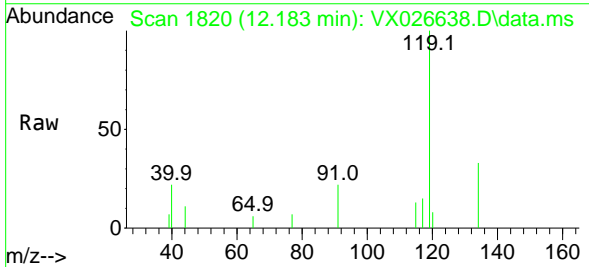
Instrument : MSVOA_X
 ClientSampleId : MW-14DB

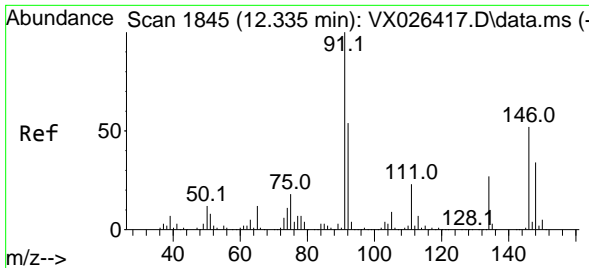
Tgt Ion	Resp	Lower	Upper
105	100		
134	19.8	10.1	30.1



#86
 p-Isopropyltoluene
 Concen: 0.233 ug/l
 RT: 12.183 min Scan# 1820
 Delta R.T. 0.171 min
 Lab File: VX026638.D
 Acq: 27 Jan 2022 20:30

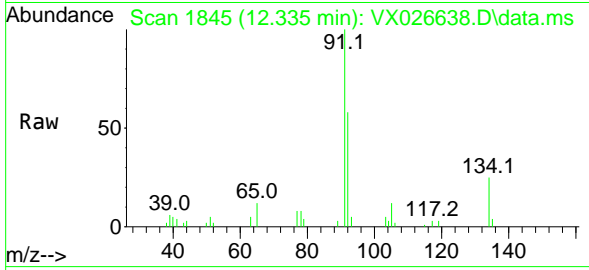
Tgt Ion	Resp	Lower	Upper
119	100		
134	23.2	13.0	39.0
91	23.8	12.6	37.6





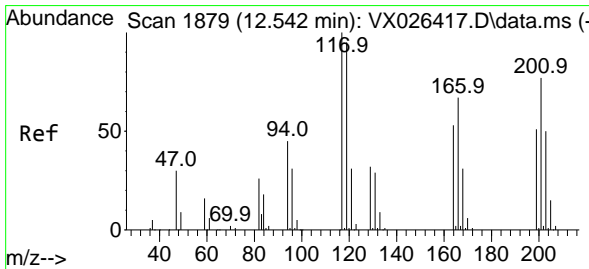
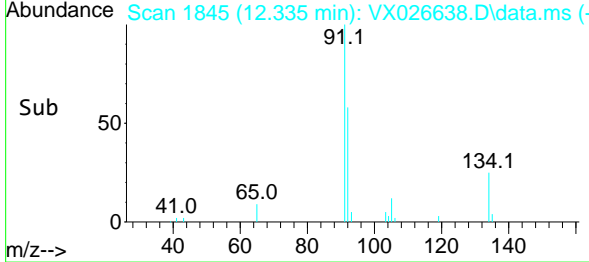
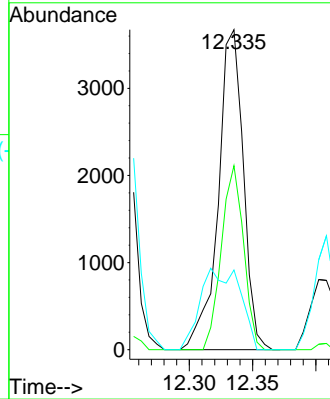
#89
 n-Butylbenzene
 Concen: 1.121 ug/l
 RT: 12.335 min Scan# 1845
 Delta R.T. 0.000 min
 Lab File: VX026638.D
 Acq: 27 Jan 2022 20:30

Instrument : MSVOA_X
 ClientSampleId : MW-14DB



Tgt Ion: 91 Resp: 5072

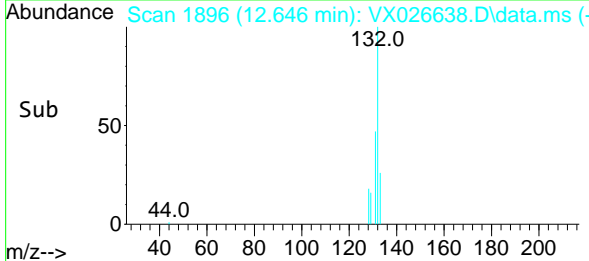
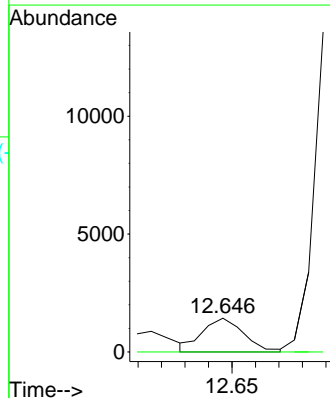
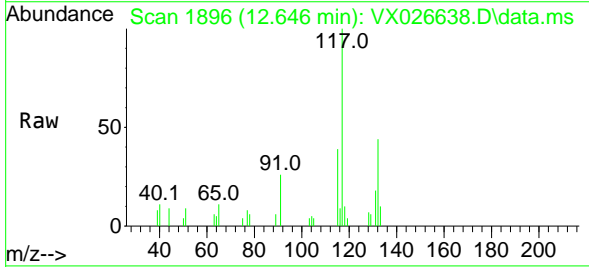
Ion	Ratio	Lower	Upper
91	100		
92	50.7	27.2	81.6
134	40.2	13.1	39.1#

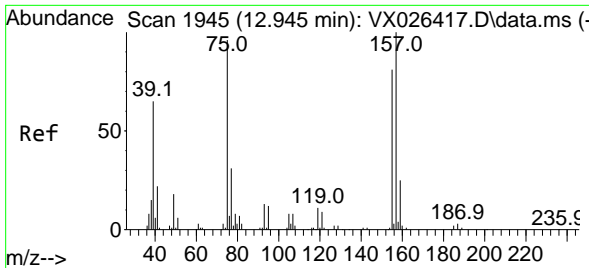


#90
 Hexachloroethane
 Concen: 4.086 ug/l
 RT: 12.646 min Scan# 1896
 Delta R.T. 0.104 min
 Lab File: VX026638.D
 Acq: 27 Jan 2022 20:30

Tgt Ion: 117 Resp: 1756

Ion	Ratio	Lower	Upper
117	100		
201	0.0	35.6	106.8#



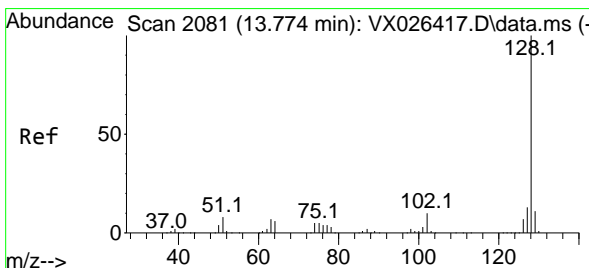
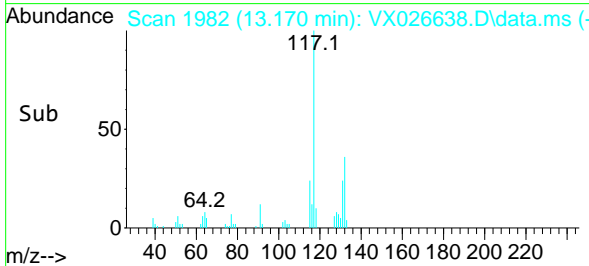
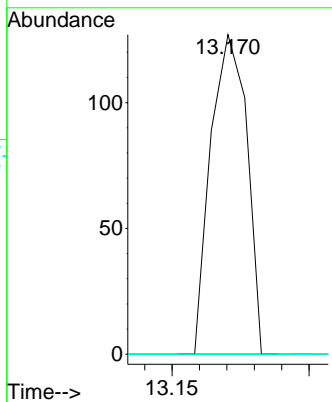
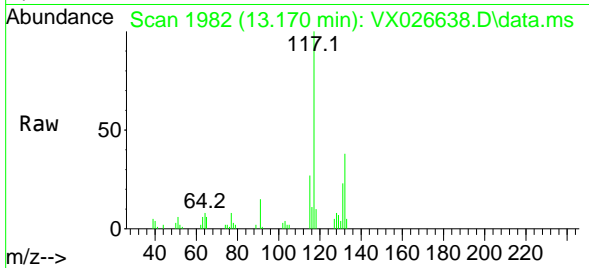


#92
 1,2-Dibromo-3-Chloropropane
 Concen: 0.283 ug/l
 RT: 13.170 min Scan# 1945
 Delta R.T. 0.226 min
 Lab File: VX026638.D
 Acq: 27 Jan 2022 20:30

Instrument : MSVOA_X
 ClientSampleId : MW-14DB

Tgt Ion: 75 Resp: 116

Ion	Ratio	Lower	Upper
75	100		
155	0.0	40.0	119.9#
157	0.0	51.6	154.8#



#95
 Naphthalene
 Concen: 8.382 ug/l
 RT: 13.774 min Scan# 2081
 Delta R.T. 0.000 min
 Lab File: VX026638.D
 Acq: 27 Jan 2022 20:30

Tgt Ion: 128 Resp: 45912

Ion	Ratio	Lower	Upper
128	100		
127	13.2	10.3	15.5
129	11.3	8.7	13.1

