

Data Path : Z:\voasrv\HPCHEM1\MSVOA_X\Data\VX012723\
 Data File : VX033930.D
 Acq On : 27 Jan 2023 12:18
 Operator : JC/MD
 Sample : 01323-01RE
 Misc : 5.0mL/MSVOA_X/WATER
 ALS Vial : 10 Sample Multiplier: 1

Instrument :
 MSVOA_X
 ClientSampleId :
 LEA-5SR

Quant Time: Jan 28 03:04:05 2023
 Quant Method : Z:\voasrv\HPCHEM1\MSVOA_X\Method\82X011123W.M
 Quant Title : SW846 8260
 QLast Update : Wed Jan 11 14:48:42 2023
 Response via : Initial Calibration

Compound	R.T.	QIon	Response	Conc	Units	Dev(Min)

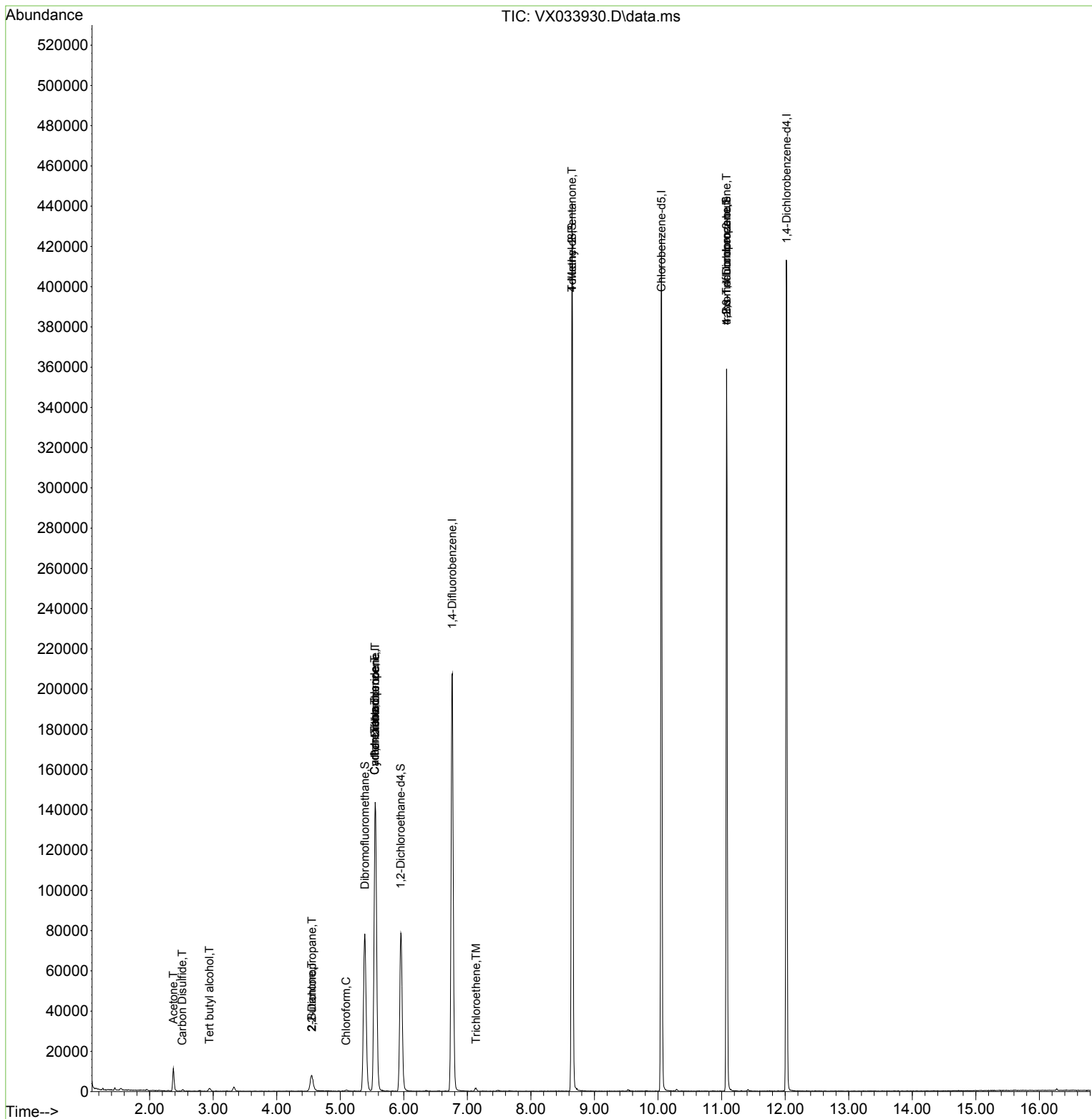
Internal Standards						
1) Pentafluorobenzene	5.550	168	158541	50.000	ug/l	0.00
34) 1,4-Difluorobenzene	6.763	114	228283	50.000	ug/l	0.00
63) Chlorobenzene-d5	10.055	117	206311	50.000	ug/l	0.00
72) 1,4-Dichlorobenzene-d4	12.024	152	97860	50.000	ug/l	0.00
System Monitoring Compounds						
33) 1,2-Dichloroethane-d4	5.952	65	76465	45.807	ug/l	0.00
Spiked Amount	50.000	Range	78 - 117	Recovery	=	91.620%
35) Dibromofluoromethane	5.385	113	69595	49.097	ug/l	0.00
Spiked Amount	50.000	Range	75 - 124	Recovery	=	98.200%
50) Toluene-d8	8.647	98	265331	51.373	ug/l	0.00
Spiked Amount	50.000	Range	92 - 112	Recovery	=	102.740%
62) 4-Bromofluorobenzene	11.079	95	91976	47.965	ug/l	0.00
Spiked Amount	50.000	Range	83 - 123	Recovery	=	95.920%
Target Compounds						
					Qvalue	
11) Tert butyl alcohol	2.941	59	1031	3.555	ug/l #	86
16) Acetone	2.374	43	11883	7.575	ug/l	97
17) Carbon Disulfide	2.514	76	305	1.912	ug/l #	76
20) Methylene Chloride	2.794	84	157	Below Cal	#	58
25) 2-Butanone	4.550	43	350	0.321	ug/l #	51
26) 2,2-Dichloropropane	4.556	77	644	0.336	ug/l #	52
30) Chloroform	5.093	83	732	0.267	ug/l	85
31) Cyclohexane	5.544	56	2250	0.916	ug/l #	1
36) 1,1-Dichloropropene	5.550	75	9603	4.642	ug/l #	48
37) Ethyl Acetate	4.550	43	350	Below Cal	#	68
38) Carbon Tetrachloride	5.544	117	13426	6.266	ug/l #	15
44) Trichloroethene	7.135	130	716	0.425	ug/l	82
51) 4-Methyl-2-Pentanone	8.647	43	1009	0.503	ug/l #	1
73) Isopropylbenzene	11.079	105	60	Below Cal	#	48
76) 1,2,3-Trichloropropane	11.079	75	42591	23.688	ug/l #	34
79) 2-Chlorotoluene	11.372	91	20	Below Cal	#	39
81) trans-1,4-Dichloro-2-b...	11.079	75	42591	73.618	ug/l #	8
82) 4-Chlorotoluene	11.463	91	118	Below Cal	#	43

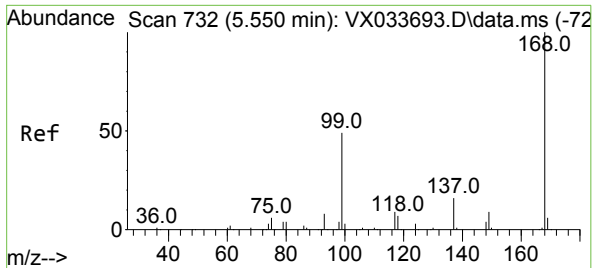
(#) = qualifier out of range (m) = manual integration (+) = signals summed

Data Path : Z:\voasrv\HPCHEM1\MSVOA_X\Data\VX012723\
 Data File : VX033930.D
 Acq On : 27 Jan 2023 12:18
 Operator : JC/MD
 Sample : 01323-01RE
 Misc : 5.0mL/MSVOA_X/WATER
 ALS Vial : 10 Sample Multiplier: 1

Instrument :
 MSVOA_X
ClientSampleId :
 LEA-5SR

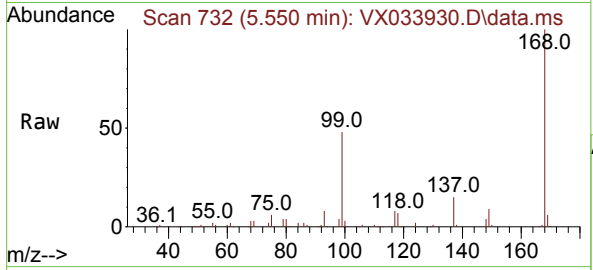
Quant Time: Jan 28 03:04:05 2023
 Quant Method : Z:\voasrv\HPCHEM1\MSVOA_X\Method\82X011123W.M
 Quant Title : SW846 8260
 QLast Update : Wed Jan 11 14:48:42 2023
 Response via : Initial Calibration



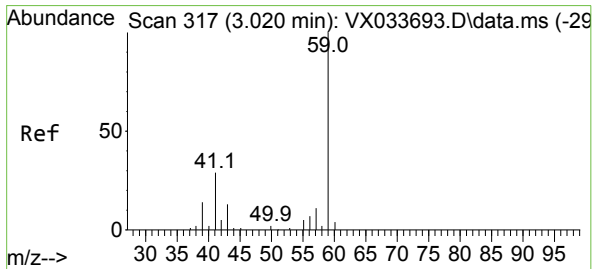
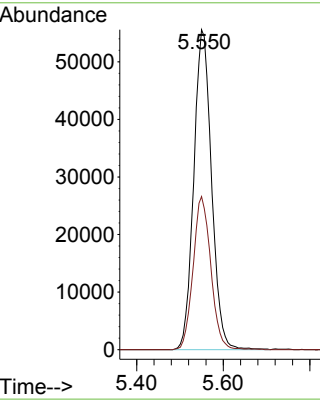
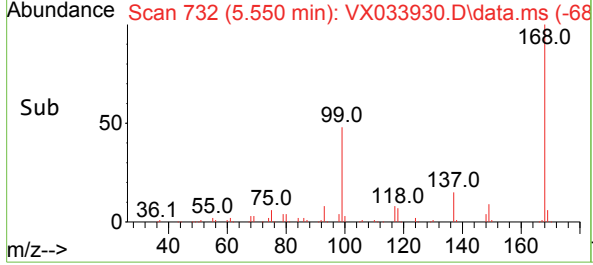


#1
 Pentafluorobenzene
 Concen: 50.000 ug/l
 RT: 5.550 min Scan# 71
 Delta R.T. -0.000 min
 Lab File: VX033930.D
 Acq: 27 Jan 2023 12:18

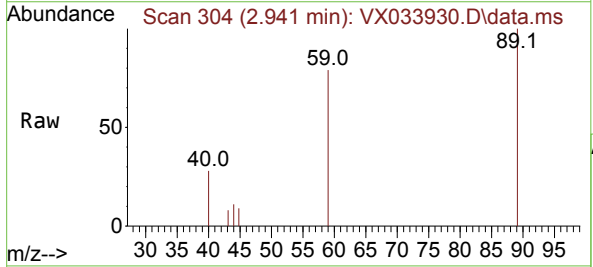
Instrument : MSVOA_X
 Client Sample Id : LEA-5SR



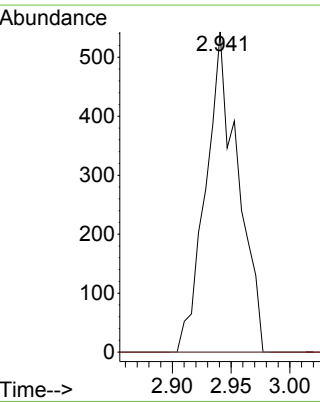
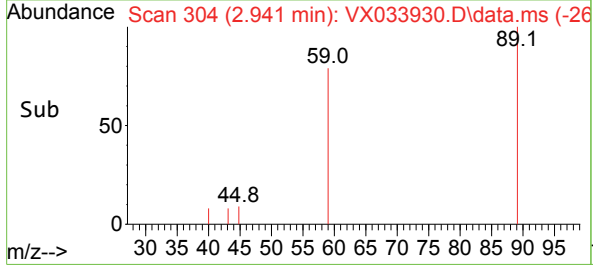
Tgt Ion: 168 Resp: 158541
 Ion Ratio Lower Upper
 168 100
 99 47.8 39.6 59.4

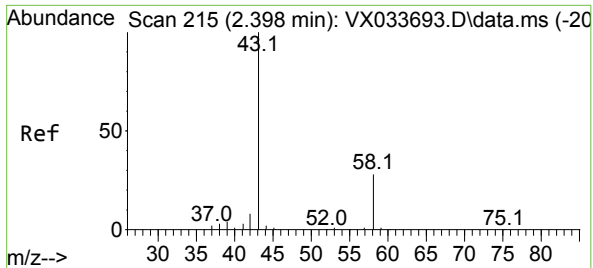


#11
 Tert butyl alcohol
 Concen: 3.555 ug/l
 RT: 2.941 min Scan# 304
 Delta R.T. -0.079 min
 Lab File: VX033930.D
 Acq: 27 Jan 2023 12:18



Tgt Ion: 59 Resp: 1031
 Ion Ratio Lower Upper
 59 100
 57 0.0 3.7 5.5#

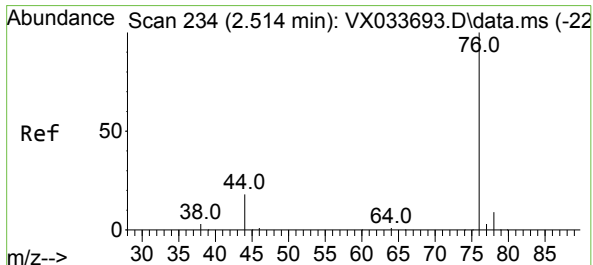
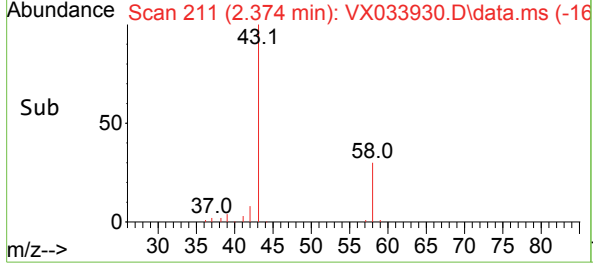
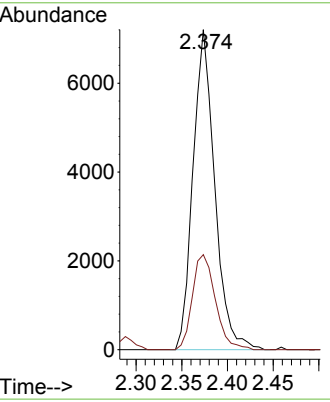
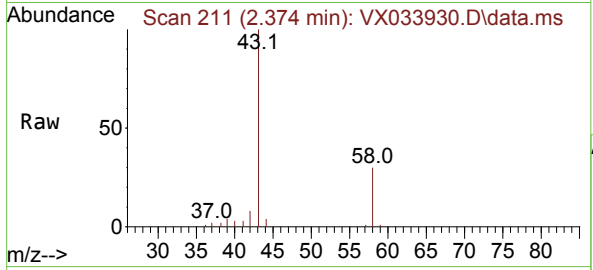




#16
 Acetone
 Concen: 7.575 ug/l
 RT: 2.374 min Scan# 211
 Delta R.T. -0.024 min
 Lab File: VX033930.D
 Acq: 27 Jan 2023 12:18

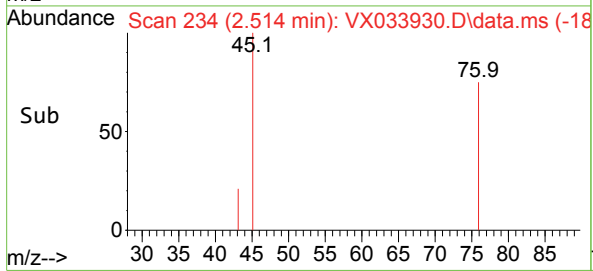
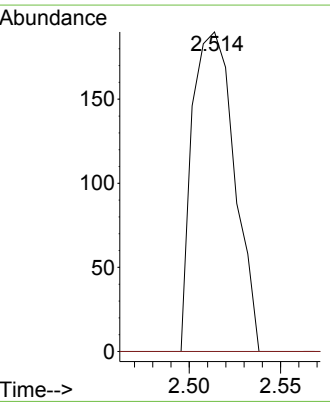
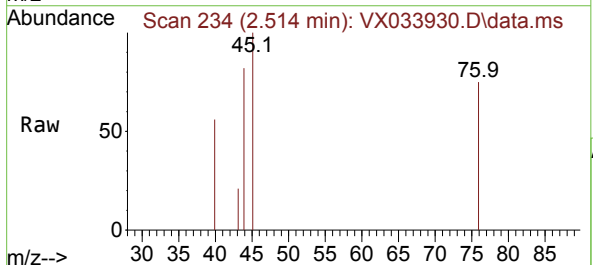
Instrument : MSVOA_X
 ClientSampleId : LEA-5SR

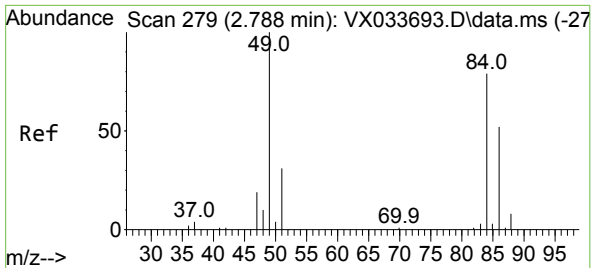
Tgt Ion	Resp	Lower	Upper
43	11883	100	
58	29.7	22.6	33.8



#17
 Carbon Disulfide
 Concen: 1.912 ug/l
 RT: 2.514 min Scan# 234
 Delta R.T. -0.000 min
 Lab File: VX033930.D
 Acq: 27 Jan 2023 12:18

Tgt Ion	Resp	Lower	Upper
76	305	100	
78	0.0	7.0	10.6#

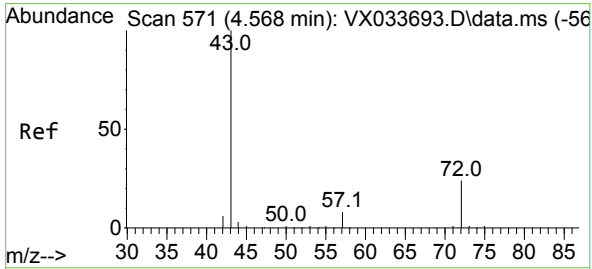
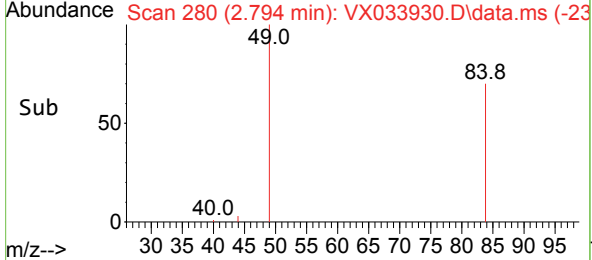
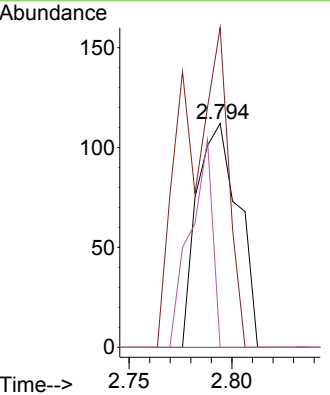
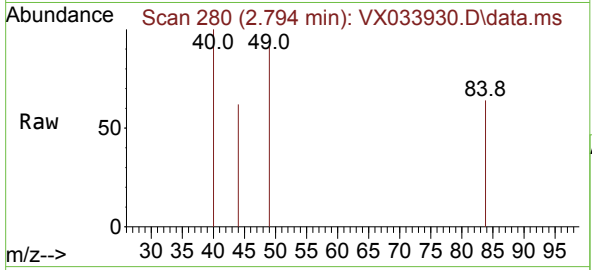




#20
 Methylene Chloride
 Concen: Below Cal
 RT: 2.794 min Scan# 21
 Delta R.T. 0.006 min
 Lab File: VX033930.D
 Acq: 27 Jan 2023 12:18

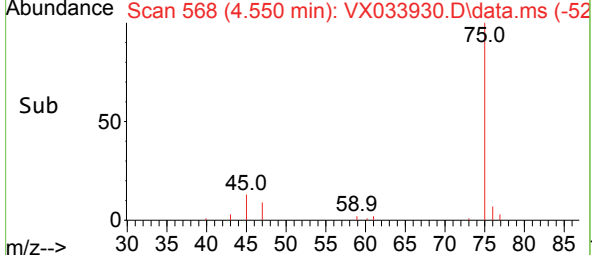
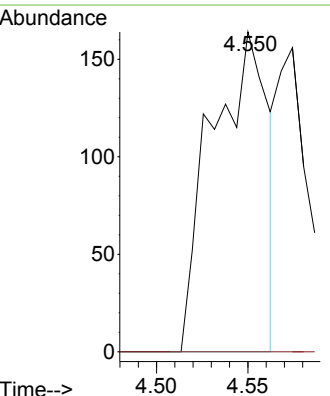
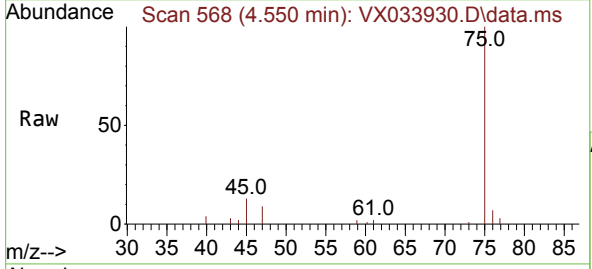
Instrument : MSVOA_X
 ClientSampleId : LEA-5SR

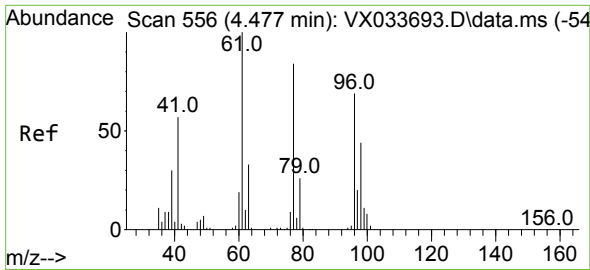
Tgt Ion	Resp	Lower	Upper
84	157		
49	142.9	101.1	151.7
51	0.0	31.0	46.6#
86	0.0	52.6	79.0#



#25
 2-Butanone
 Concen: 0.321 ug/l
 RT: 4.550 min Scan# 568
 Delta R.T. -0.018 min
 Lab File: VX033930.D
 Acq: 27 Jan 2023 12:18

Tgt Ion	Resp	Lower	Upper
43	350		
72	0.0	19.4	29.2#

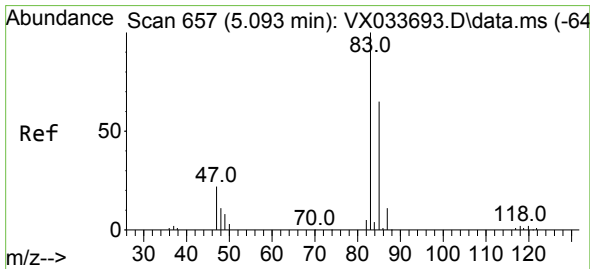
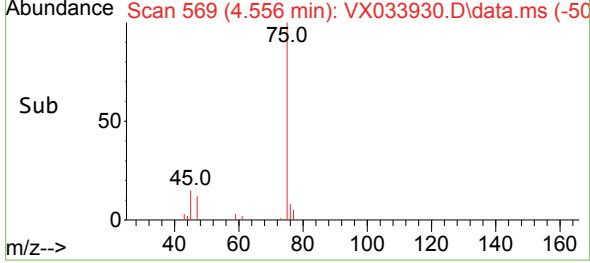
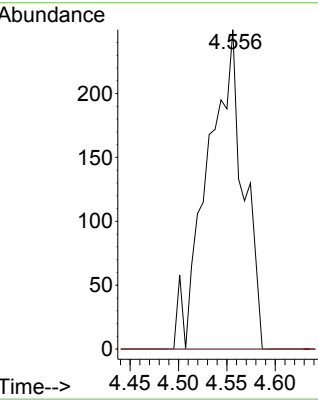
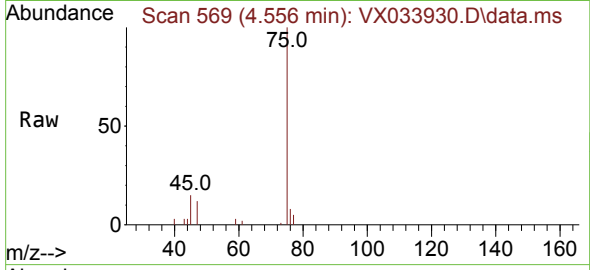




#26
 2,2-Dichloropropane
 Concen: 0.336 ug/l
 RT: 4.556 min Scan# 569
 Delta R.T. 0.079 min
 Lab File: VX033930.D
 Acq: 27 Jan 2023 12:18

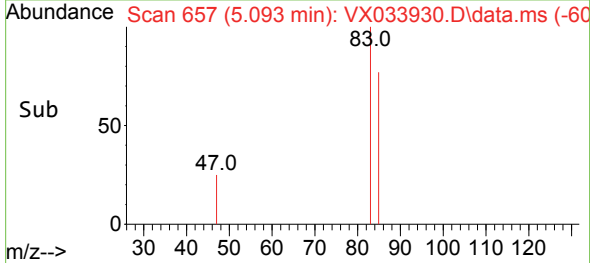
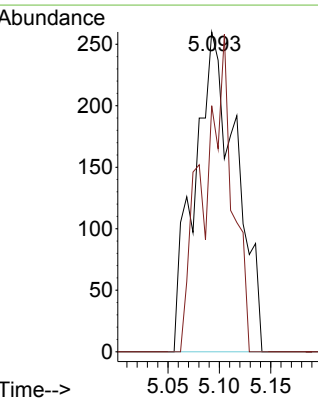
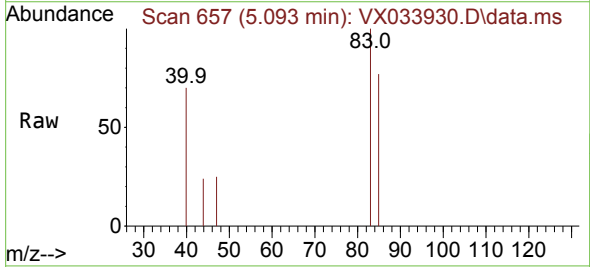
Instrument :
 MSVOA_X
 ClientSampleId :
 LEA-5SR

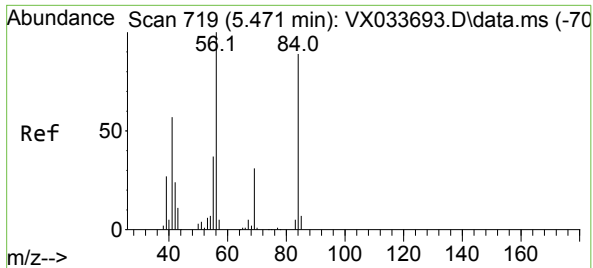
Tgt Ion: 77 Resp: 644
 Ion Ratio Lower Upper
 77 100
 97 0.0 11.9 35.5#



#30
 Chloroform
 Concen: 0.267 ug/l
 RT: 5.093 min Scan# 657
 Delta R.T. -0.000 min
 Lab File: VX033930.D
 Acq: 27 Jan 2023 12:18

Tgt Ion: 83 Resp: 732
 Ion Ratio Lower Upper
 83 100
 85 76.9 52.1 78.1

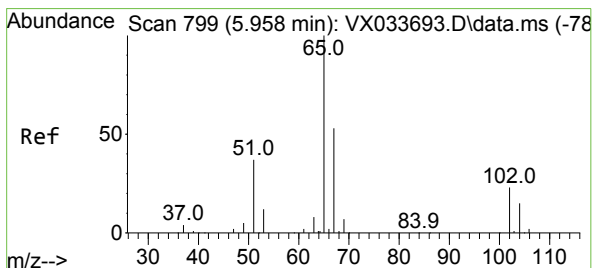
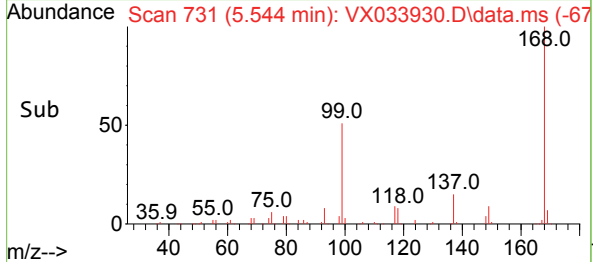
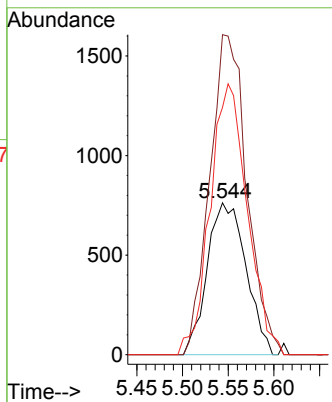
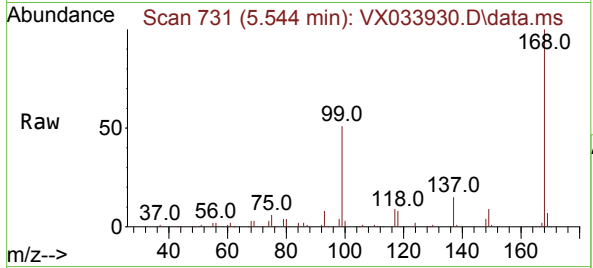




#31
 Cyclohexane
 Concen: 0.916 ug/l
 RT: 5.544 min Scan# 719
 Delta R.T. 0.073 min
 Lab File: VX033930.D
 Acq: 27 Jan 2023 12:18

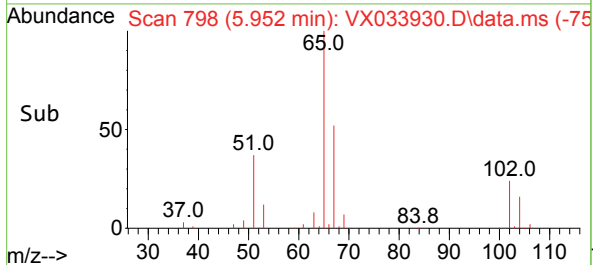
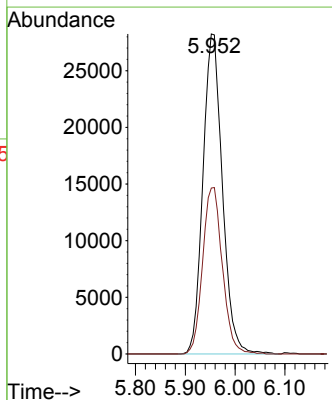
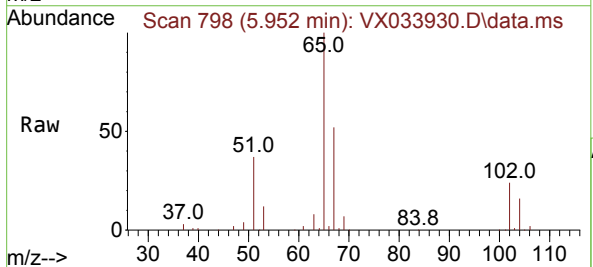
Instrument :
 MSVOA_X
 ClientSampleId :
 LEA-5SR

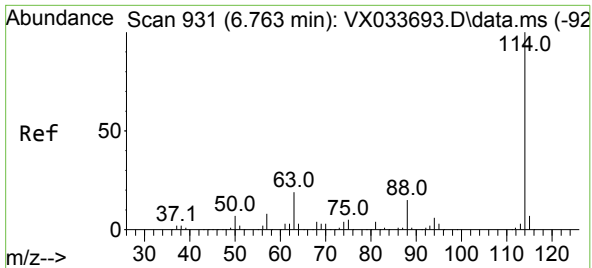
Tgt Ion	Resp	Ion Ratio	Lower	Upper
56	2250	100		
69		210.6	24.6	37.0#
84		162.8	71.0	106.6#



#33
 1,2-Dichloroethane-d4
 Concen: 45.807 ug/l
 RT: 5.952 min Scan# 798
 Delta R.T. -0.006 min
 Lab File: VX033930.D
 Acq: 27 Jan 2023 12:18

Tgt Ion	Resp	Ion Ratio	Lower	Upper
65	76465	100		
67		52.8	0.0	104.8



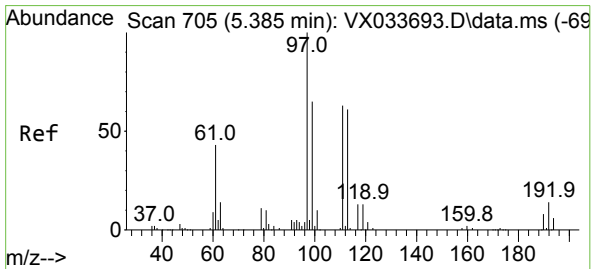
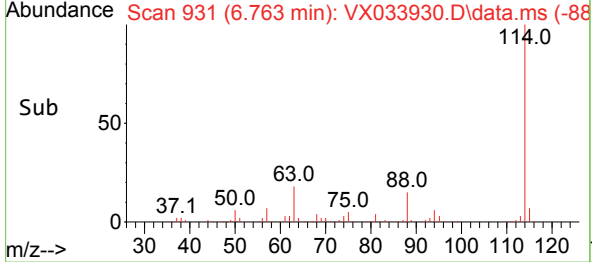
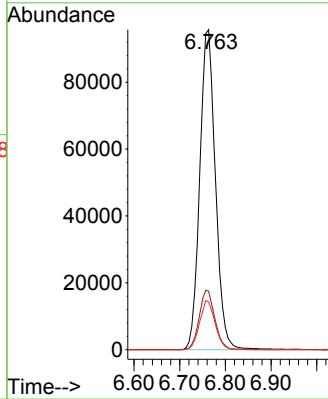
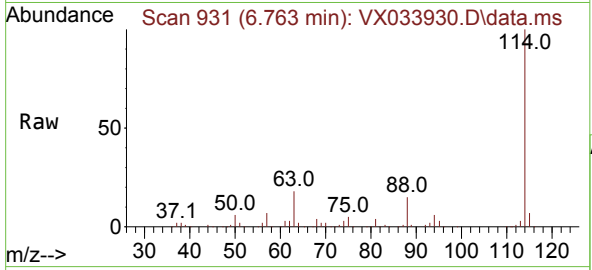


#34
 1,4-Difluorobenzene
 Concen: 50.000 ug/l
 RT: 6.763 min Scan# 91
 Delta R.T. 0.000 min
 Lab File: VX033930.D
 Acq: 27 Jan 2023 12:18

Instrument :
 MSVOA_X
 ClientSampleId :
 LEA-5SR

Tgt Ion:114 Resp: 228283

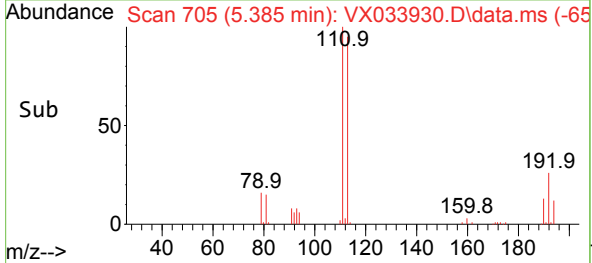
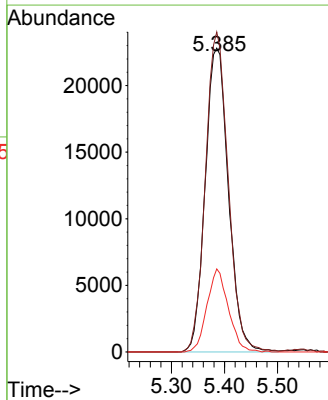
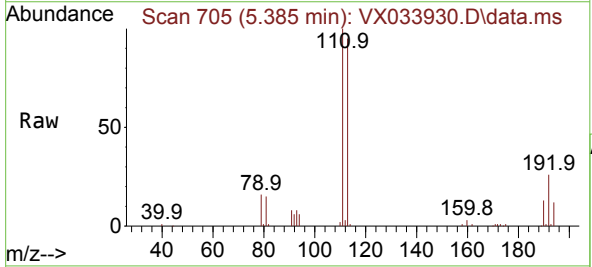
Ion	Ratio	Lower	Upper
114	100		
63	18.3	0.0	37.4
88	15.0	0.0	30.6

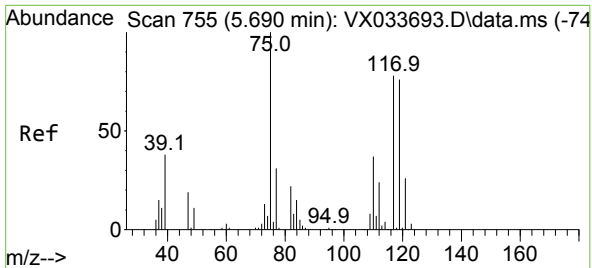


#35
 Dibromofluoromethane
 Concen: 49.097 ug/l
 RT: 5.385 min Scan# 705
 Delta R.T. -0.000 min
 Lab File: VX033930.D
 Acq: 27 Jan 2023 12:18

Tgt Ion:113 Resp: 69595

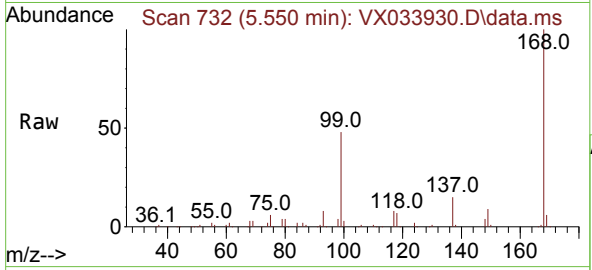
Ion	Ratio	Lower	Upper
113	100		
111	103.0	83.0	124.6
192	25.1	19.0	28.4





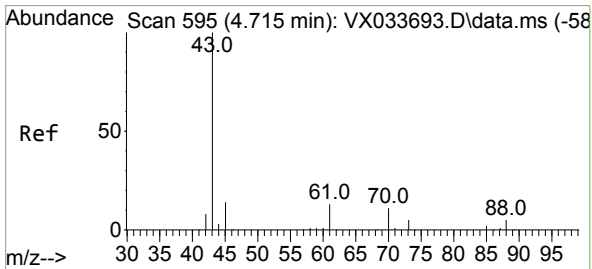
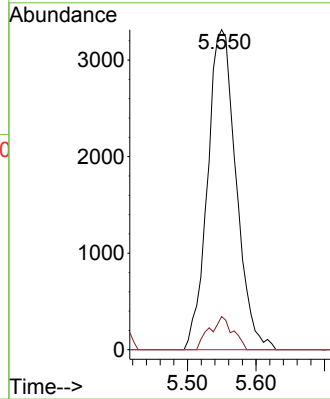
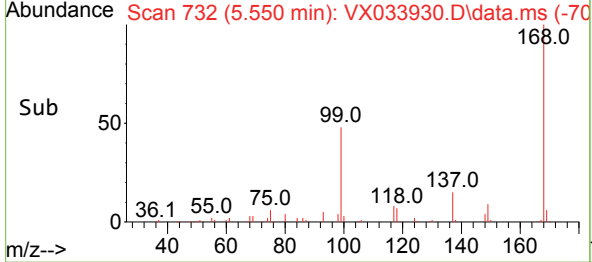
#36
 1,1-Dichloropropene
 Concen: 4.642 ug/l
 RT: 5.550 min Scan# 71
 Delta R.T. -0.140 min
 Lab File: VX033930.D
 Acq: 27 Jan 2023 12:18

Instrument :
 MSVOA_X
 ClientSampleId :
 LEA-5SR

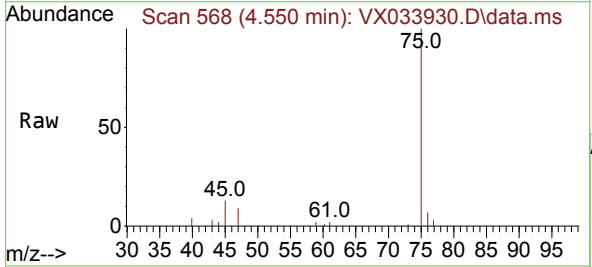


Tgt Ion: 75 Resp: 9603

Ion	Ratio	Lower	Upper
75	100		
110	8.4	18.8	56.4#
77	0.0	25.1	37.7#

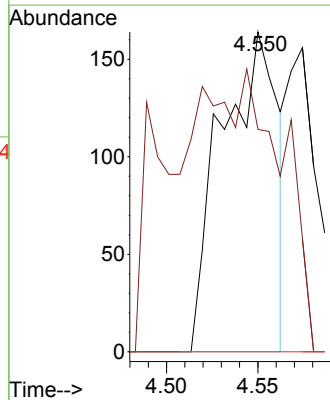
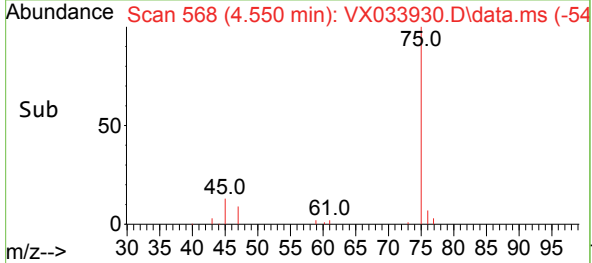


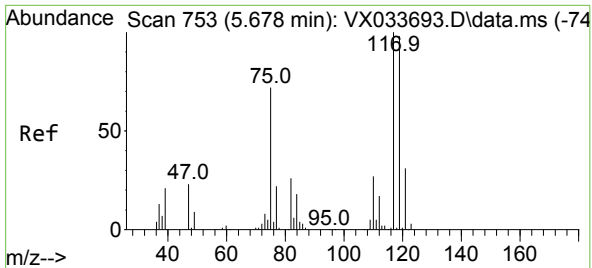
#37
 Ethyl Acetate
 Concen: Below Cal
 RT: 4.550 min Scan# 568
 Delta R.T. -0.165 min
 Lab File: VX033930.D
 Acq: 27 Jan 2023 12:18



Tgt Ion: 43 Resp: 350

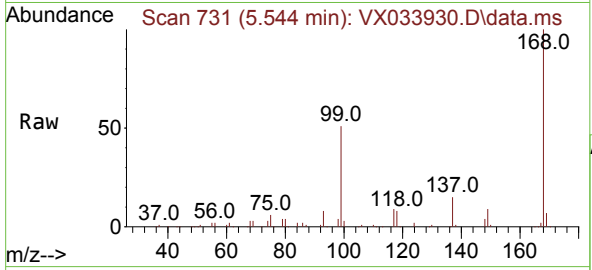
Ion	Ratio	Lower	Upper
43	100		
61	0.0	11.1	16.7#
70	0.0	8.5	12.7#



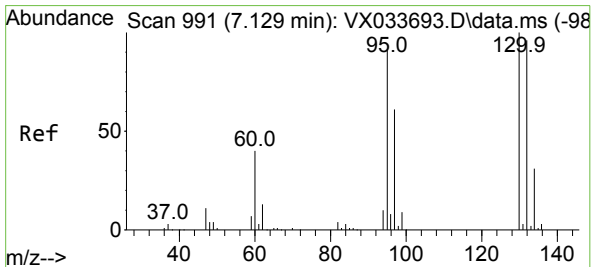
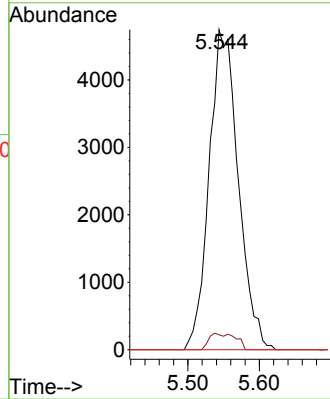
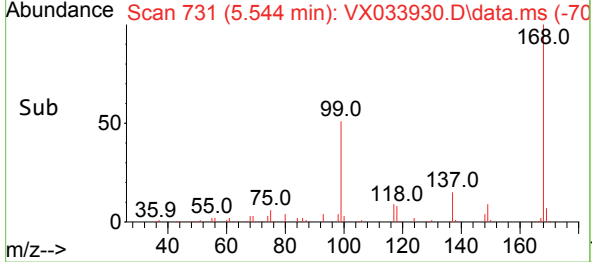


#38
 Carbon Tetrachloride
 Concen: 6.266 ug/l
 RT: 5.544 min Scan# 711
 Delta R.T. -0.134 min
 Lab File: VX033930.D
 Acq: 27 Jan 2023 12:18

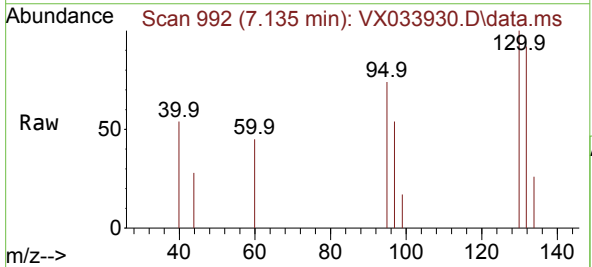
Instrument : MSVOA_X
 Client Sample Id : LEA-5SR



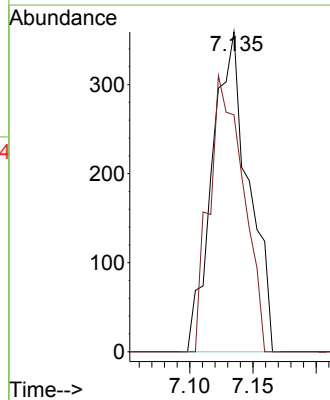
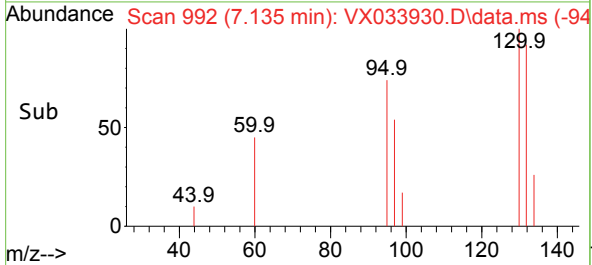
Tgt Ion:117 Resp: 13426
 Ion Ratio Lower Upper
 117 100
 119 4.6 78.0 117.0#
 121 0.0 24.4 36.6#

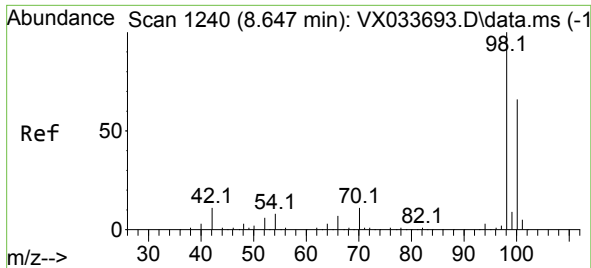


#44
 Trichloroethene
 Concen: 0.425 ug/l
 RT: 7.135 min Scan# 992
 Delta R.T. 0.006 min
 Lab File: VX033930.D
 Acq: 27 Jan 2023 12:18



Tgt Ion:130 Resp: 716
 Ion Ratio Lower Upper
 130 100
 95 74.1 0.0 182.6

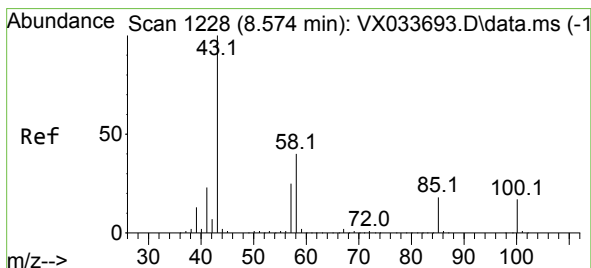
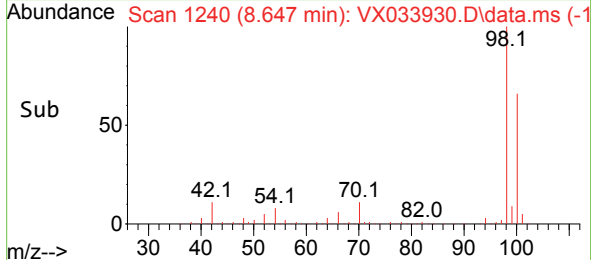
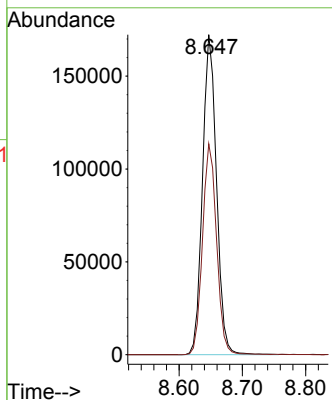
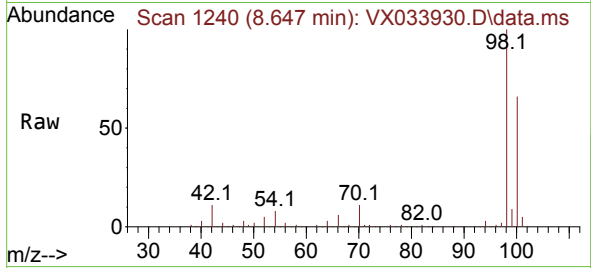




#50
 Toluene-d8
 Concen: 51.373 ug/l
 RT: 8.647 min Scan# 11
 Delta R.T. -0.000 min
 Lab File: VX033930.D
 Acq: 27 Jan 2023 12:18

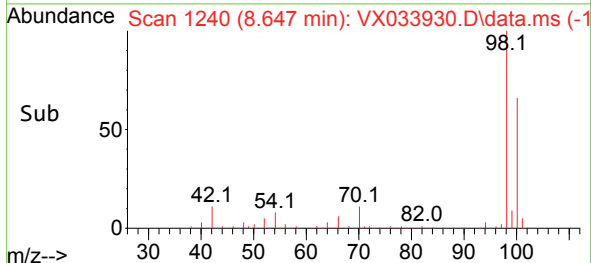
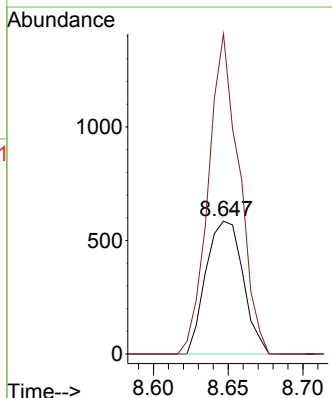
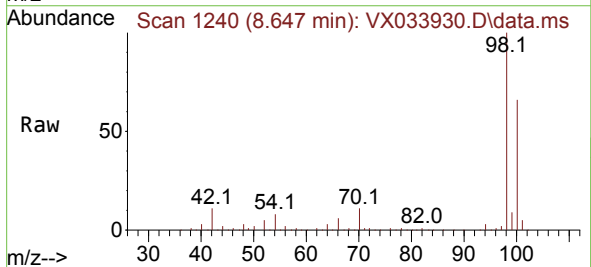
Instrument :
 MSVOA_X
 ClientSampleId :
 LEA-5SR

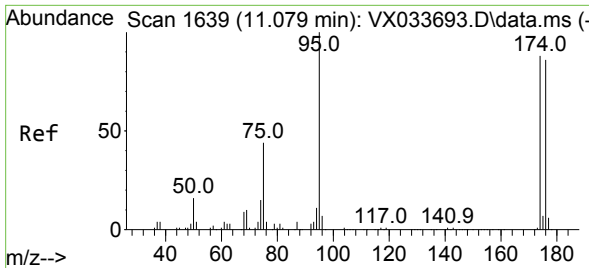
Tgt Ion: 98 Resp: 265331
 Ion Ratio Lower Upper
 98 100
 100 66.4 53.6 80.4



#51
 4-Methyl-2-Pentanone
 Concen: 0.503 ug/l
 RT: 8.647 min Scan# 1240
 Delta R.T. 0.073 min
 Lab File: VX033930.D
 Acq: 27 Jan 2023 12:18

Tgt Ion: 43 Resp: 1009
 Ion Ratio Lower Upper
 43 100
 58 200.0 31.2 46.8#

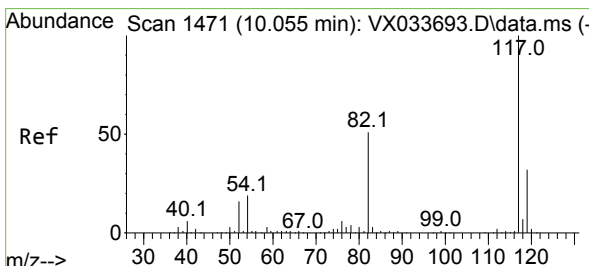
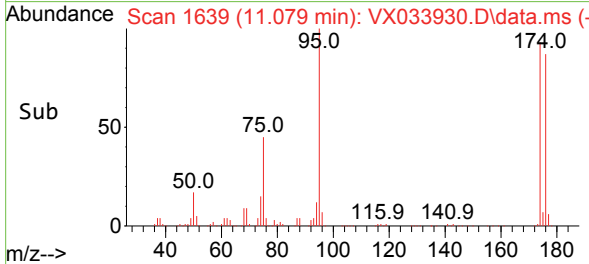
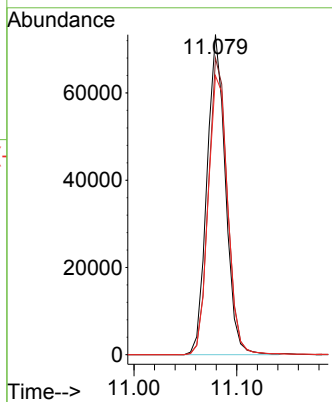
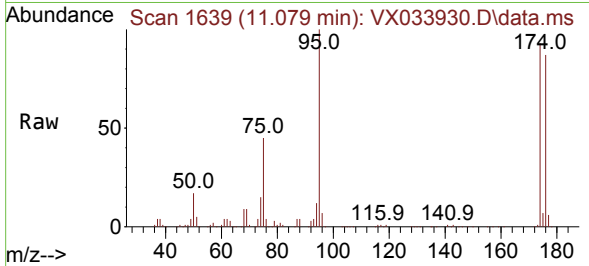




#62
 4-Bromofluorobenzene
 Concen: 47.965 ug/l
 RT: 11.079 min Scan# 1639
 Delta R.T. -0.000 min
 Lab File: VX033930.D
 Acq: 27 Jan 2023 12:18

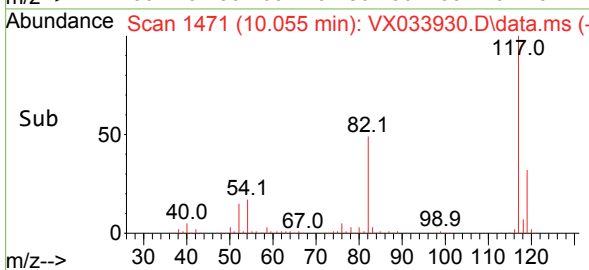
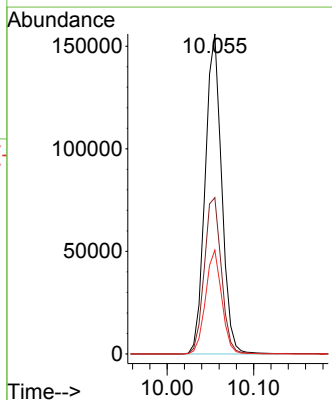
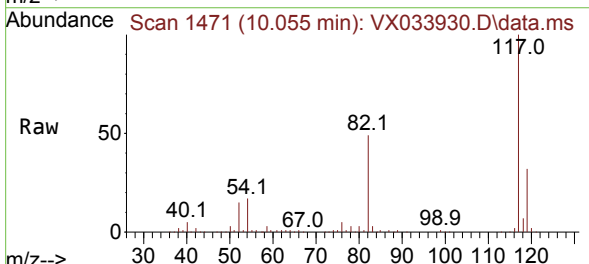
Instrument : MSVOA_X
 ClientSampleId : LEA-5SR

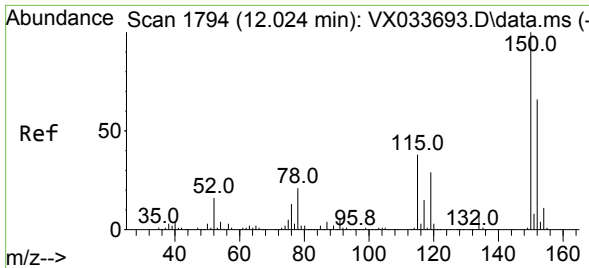
Tgt Ion	Resp	Ion Ratio	Lower	Upper
95	91976	100		
174	95.0	0.0	184.4	
176	92.3	0.0	178.8	



#63
 Chlorobenzene-d5
 Concen: 50.000 ug/l
 RT: 10.055 min Scan# 1471
 Delta R.T. 0.000 min
 Lab File: VX033930.D
 Acq: 27 Jan 2023 12:18

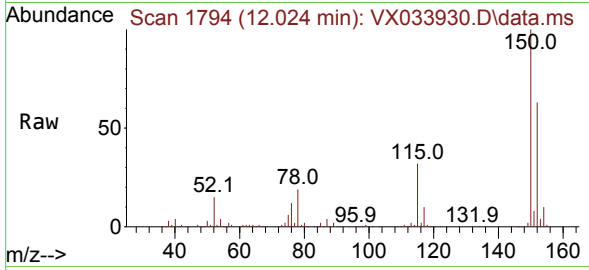
Tgt Ion	Resp	Ion Ratio	Lower	Upper
117	206311	100		
82	48.8	40.6	60.8	
119	32.4	25.6	38.4	



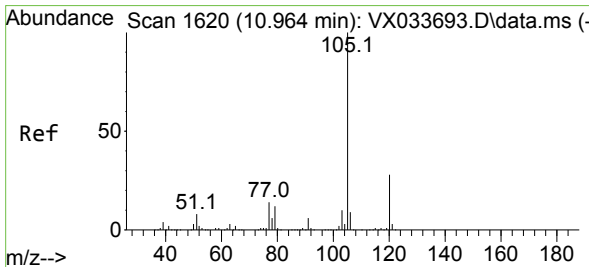
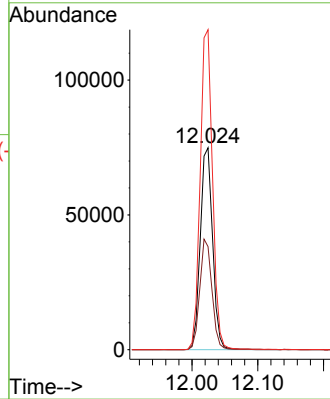
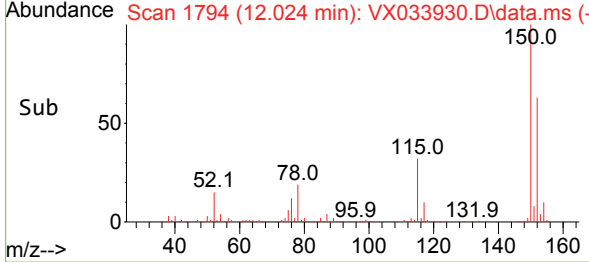


#72
 1,4-Dichlorobenzene-d4
 Concen: 50.000 ug/l
 RT: 12.024 min Scan# 11
 Delta R.T. -0.000 min
 Lab File: VX033930.D
 Acq: 27 Jan 2023 12:18

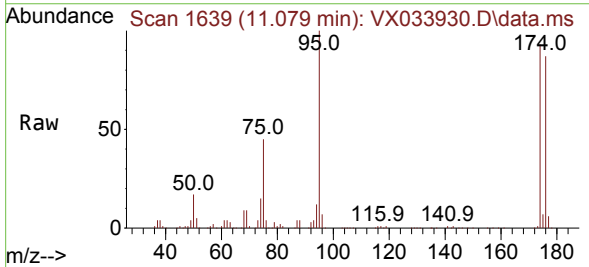
Instrument :
 MSVOA_X
 ClientSampleId :
 LEA-5SR



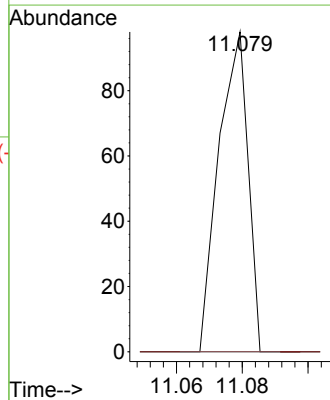
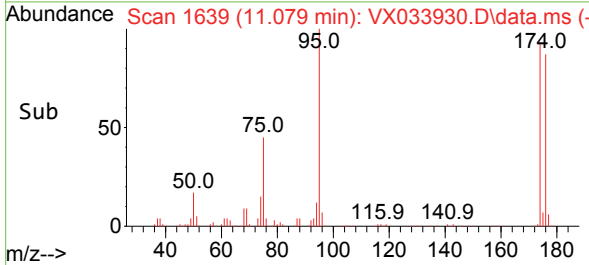
Tgt Ion:152 Resp: 97860
 Ion Ratio Lower Upper
 152 100
 115 53.8 38.7 116.1
 150 158.3 0.0 348.2

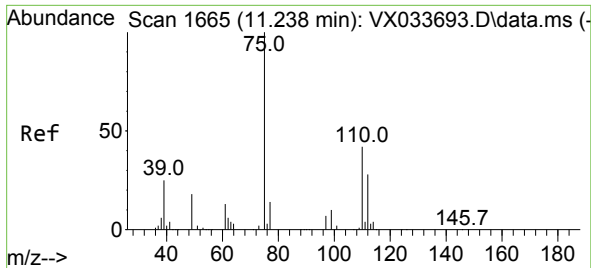


#73
 Isopropylbenzene
 Concen: Below Cal
 RT: 11.079 min Scan# 1639
 Delta R.T. 0.115 min
 Lab File: VX033930.D
 Acq: 27 Jan 2023 12:18



Tgt Ion:105 Resp: 60
 Ion Ratio Lower Upper
 105 100
 120 0.0 13.6 40.8#

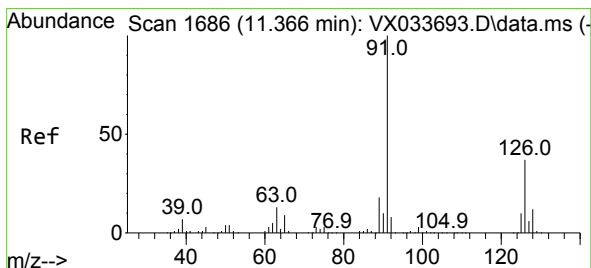
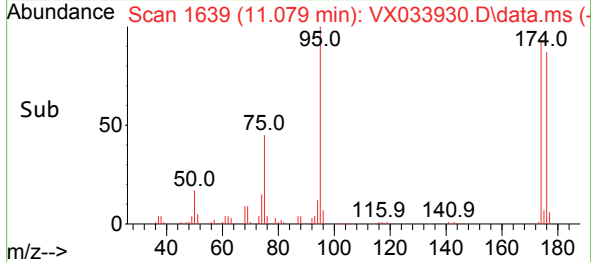
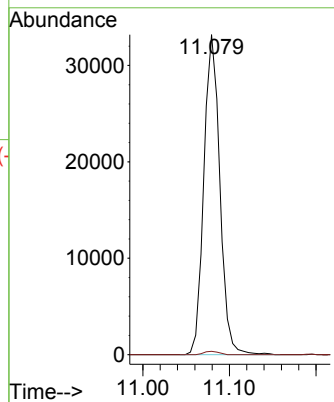
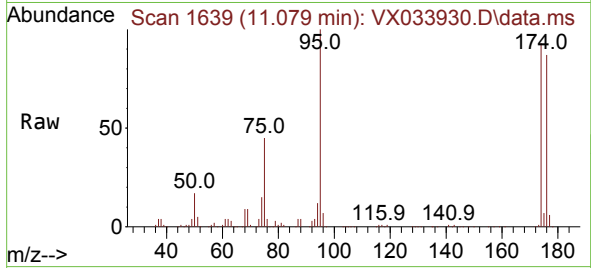




#76
 1,2,3-Trichloropropane
 Concen: 23.688 ug/l
 RT: 11.079 min Scan# 1639
 Delta R.T. -0.159 min
 Lab File: VX033930.D
 Acq: 27 Jan 2023 12:18

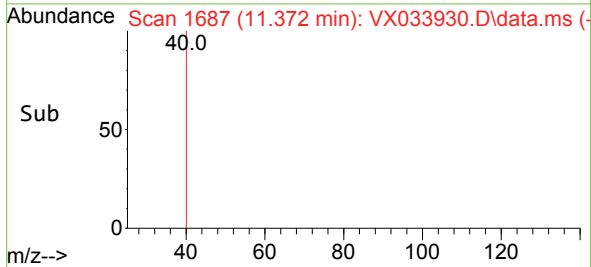
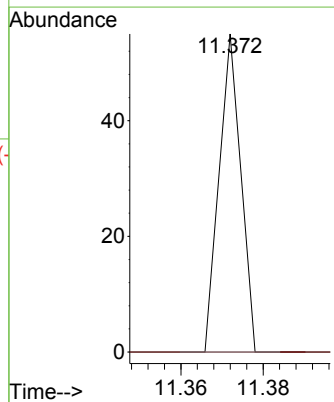
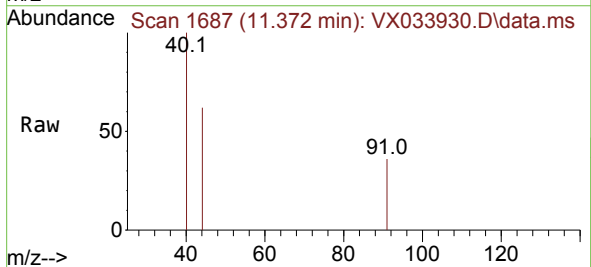
Instrument :
 MSVOA_X
 ClientSampleId :
 LEA-5SR

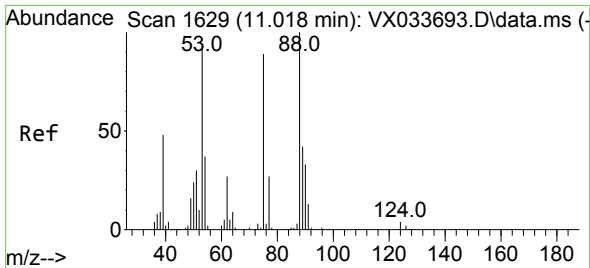
Tgt Ion: 75 Resp: 42591
 Ion Ratio Lower Upper
 75 100
 77 1.0 21.8 65.4#



#79
 2-Chlorotoluene
 Concen: Below Cal
 RT: 11.372 min Scan# 1687
 Delta R.T. 0.006 min
 Lab File: VX033930.D
 Acq: 27 Jan 2023 12:18

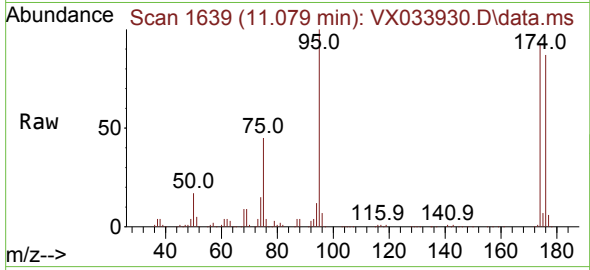
Tgt Ion: 91 Resp: 20
 Ion Ratio Lower Upper
 91 100
 126 0.0 18.1 54.1#



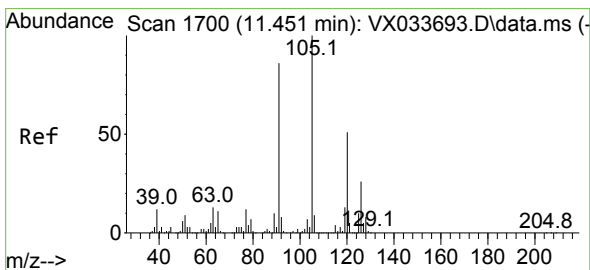
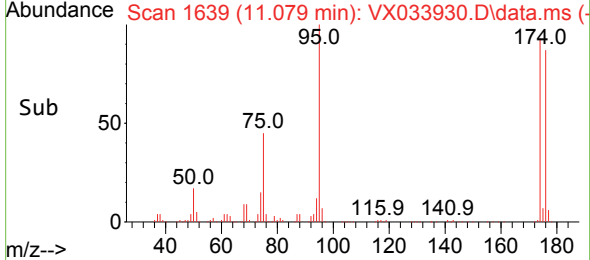
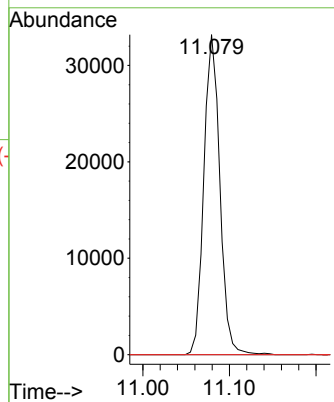


#81
 trans-1,4-Dichloro-2-butene
 Concen: 73.618 ug/l
 RT: 11.079 min Scan# 1
 Delta R.T. 0.061 min
 Lab File: VX033930.D
 Acq: 27 Jan 2023 12:18

Instrument :
 MSVOA_X
 ClientSampleId :
 LEA-5SR



Tgt Ion: 75 Resp: 42591
 Ion Ratio Lower Upper
 75 100
 53 0.0 83.0 124.6#
 89 0.0 37.7 56.5#



#82
 4-Chlorotoluene
 Concen: Below Cal
 RT: 11.463 min Scan# 1702
 Delta R.T. 0.012 min
 Lab File: VX033930.D
 Acq: 27 Jan 2023 12:18

Tgt Ion: 91 Resp: 118
 Ion Ratio Lower Upper
 91 100
 126 0.0 15.8 47.4#

