

Data Path : Z:\voasrv\HPCHEM1\MSVOA_X\Data\VX012825\
 Data File : VX044738.D
 Acq On : 28 Jan 2025 10:15
 Operator : JC/MD
 Sample : VSTD01062
 Misc : 5.0mL/MSVOA_X/WATER
 ALS Vial : 4 Sample Multiplier: 1

Instrument :
 MSVOA_X
 ClientSampleId :

Quant Time: Jan 28 11:12:28 2025
 Quant Method : Z:\voasrv\HPCHEM1\MSVOA_X\Method\SFAMXML012825WMA.M
 Quant Title : VOC Analysis
 QLast Update : Tue Jan 28 11:11:44 2025
 Response via : Initial Calibration

Compound	R.T.	QIon	Response	Conc	Units	Dev(Min)
Internal Standards						
1) 1,4-Difluorobenzene	6.757	114	323087	50.000	ug/L	0.00
28) Chlorobenzene-d5	10.049	117	276561	50.000	ug/L	0.00
58) 1,4-Dichlorobenzene-d4	12.018	152	118973	50.000	ug/L	0.00
System Monitoring Compounds						
4) Vinyl Chloride-d3	1.368	65	22160	8.198	ug/L	0.00
7) Chloroethane-d5	1.648	69	10529	13.421	ug/L	0.00
11) 1,1-Dichloroethene-d2	2.300	65	8543	8.210	ug/L	0.00
21) 2-Butanone-d5	4.465	46	21262	15.655	ug/L	0.00
24) Chloroform-d	5.056	84	40542	8.954	ug/L	0.00
26) 1,2-Dichloroethane-d4	5.952	65	24838	8.397	ug/L	0.00
32) Benzene-d6	5.964	84	83967	9.261	ug/L	0.00
36) 1,2-Dichloropropane-d6	7.306	67	26300	9.196	ug/L	0.00
41) Toluene-d8	8.647	98	74242	9.163	ug/L	0.00
43) trans-1,3-Dichloroprop...	8.952	79	11851	8.155	ug/L	0.00
47) 2-Hexanone-d5	9.384	63	15282	18.278	ug/L	0.00
56) 1,1,2,2-Tetrachloroeth...	11.189	84	33423	9.500	ug/L	0.00
66) 1,2-Dichlorobenzene-d4	12.317	152	22269	8.874	ug/L	0.00
Target Compounds						
						Qvalue
2) Dichlorodifluoromethane	1.166	85	21415	10.991	ug/L	95
3) Chloromethane	1.307	50	27539	11.645	ug/L	96
5) Vinyl chloride	1.374	62	24594	10.749	ug/L	99
6) Bromomethane	1.593	94	7055	12.642	ug/L	90
8) Chloroethane	1.666	64	12329	20.289	ug/L	99
9) Trichlorofluoromethane	1.874	101	26299	11.602	ug/L	98
10) 1,1,2-Trichloro-1,2,2-...	2.319	101	17832	10.120	ug/L	98
12) 1,1-Dichloroethene	2.313	96	15801	9.628	ug/L	81
13) Acetone	2.380	43	17358	20.181	ug/L	94
14) Carbon disulfide	2.502	76	46871	9.060	ug/L	97
15) Methyl Acetate	2.703	43	19003	9.240	ug/L	98
16) Methylene chloride	2.782	84	18418	9.091	ug/L	95
17) trans-1,2-Dichloroethene	3.087	96	17068	9.319	ug/L	99
18) Methyl tert-butyl Ether	3.111	73	63692	9.814	ug/L	97
19) 1,1-Dichloroethane	3.605	63	34249	9.482	ug/L	98
20) cis-1,2-Dichloroethene	4.483	96	21877	9.945	ug/L	97
22) 2-Butanone	4.562	43	32066	23.655	ug/L	99
23) Bromochloromethane	4.904	128	12214	11.375	ug/L	84
25) Chloroform	5.086	83	40861	11.154	ug/L	99
27) 1,2-Dichloroethane	6.086	62	30050	10.752	ug/L	96
29) Cyclohexane	5.471	56	42940	12.773	ug/L	99
30) 1,1,1-Trichloroethane	5.373	97	34669	11.221	ug/L	100
31) Carbon tetrachloride	5.672	117	29285	11.004	ug/L	99
33) Benzene	6.031	78	92689	11.970	ug/L	100
34) Trichloroethene	7.123	95	22687	11.300	ug/L	95
35) Methylcyclohexane	7.373	83	38970	11.726	ug/L	99
37) 1,2-Dichloropropane	7.428	63	25046	11.952	ug/L	99
38) Bromodichloromethane	7.818	83	30160	10.792	ug/L	99
39) cis-1,3-Dichloropropene	8.366	75	38425	10.768	ug/L	96
40) 4-Methyl-2-pentanone	8.574	43	63756	24.438	ug/L	99
42) Toluene	8.714	91	93864	11.680	ug/L	98
44) trans-1,3-Dichloropropene	8.976	75	34292	10.623	ug/L	99

Data Path : Z:\voasrv\HPCHEM1\MSVOA_X\Data\VX012825\
 Data File : VX044738.D
 Acq On : 28 Jan 2025 10:15
 Operator : JC/MD
 Sample : VSTD01062
 Misc : 5.0mL/MSVOA_X/WATER
 ALS Vial : 4 Sample Multiplier: 1

Instrument :
 MSVOA_X
 ClientSampleId :

Quant Time: Jan 28 11:12:28 2025
 Quant Method : Z:\voasrv\HPCHEM1\MSVOA_X\Method\SFAMXML012825WMA.M
 Quant Title : VOC Analysis
 QLast Update : Tue Jan 28 11:11:44 2025
 Response via : Initial Calibration

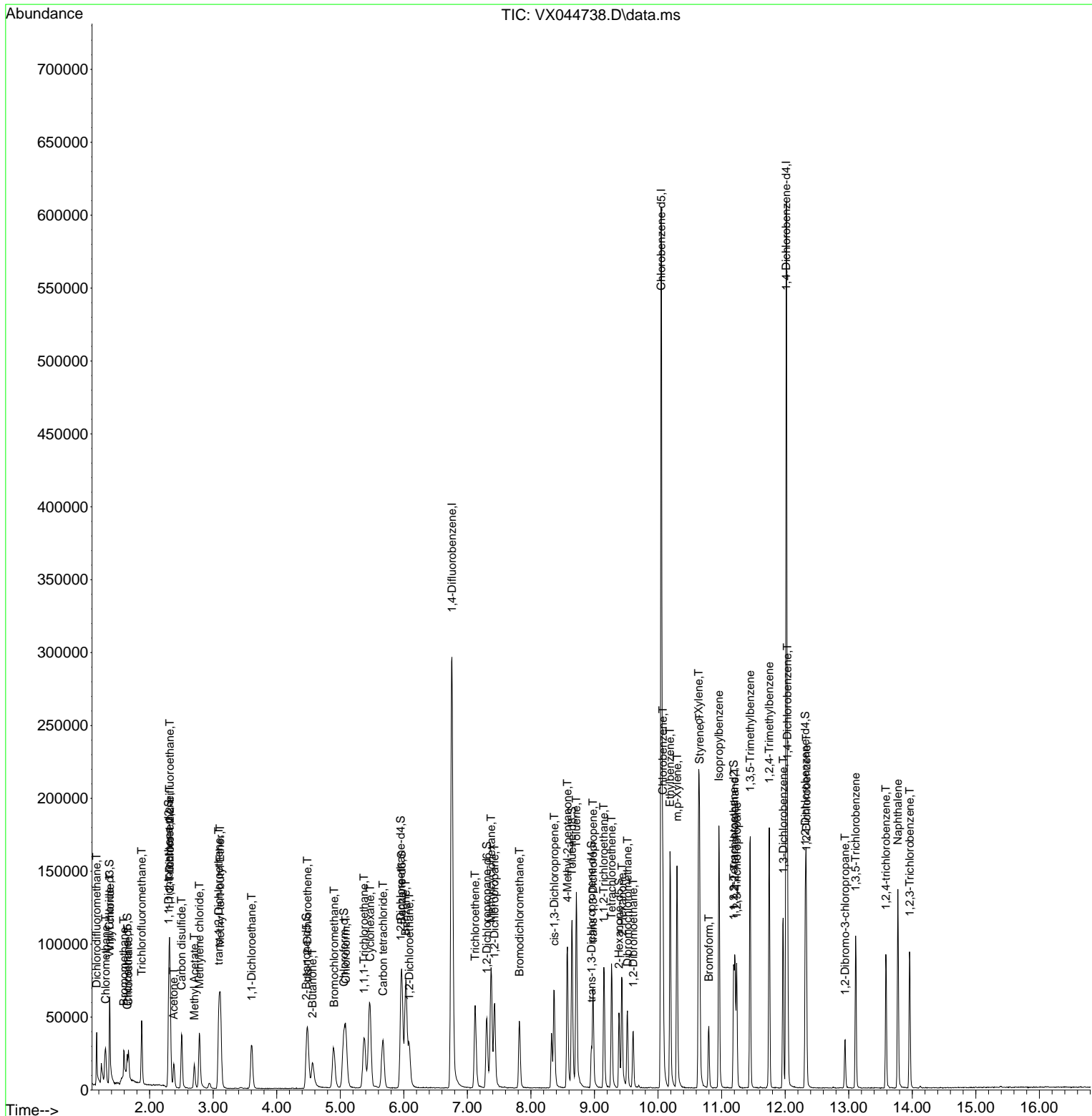
Compound	R.T.	QIon	Response	Conc	Units	Dev(Min)
45) 1,1,2-Trichloroethane	9.147	97	23129	11.359	ug/L	99
46) Tetrachloroethene	9.269	164	16377	11.881	ug/L	97
48) 2-Hexanone	9.433	43	44921	23.288	ug/L	97
49) Dibromochloromethane	9.519	129	22817	10.869	ug/L	100
50) 1,2-Dibromoethane	9.610	107	23905	11.470	ug/L #	98
51) Chlorobenzene	10.073	112	58836	11.769	ug/L	96
52) Ethylbenzene	10.189	91	101237	11.628	ug/L	99
53) m,p-Xylene	10.299	106	37681	11.564	ug/L	98
54) o-Xylene	10.640	106	38276	11.770	ug/L	99
55) Styrene	10.653	104	61369	11.584	ug/L	98
57) 1,1,2,2-Tetrachloroethane	11.207	83	36004	11.910	ug/L	99
59) Bromoform	10.799	173	15546	10.544	ug/L	99
60) Isopropylbenzene	10.957	105	97811	11.674	ug/L	99
61) 1,2,3-Trichloropropane	11.238	75	27971	11.988	ug/L	99
62) 1,3,5-Trimethylbenzene	11.451	105	78926	11.315	ug/L	100
63) 1,2,4-Trimethylbenzene	11.750	105	77542	11.397	ug/L	99
64) 1,3-Dichlorobenzene	11.969	146	38085	11.241	ug/L	99
65) 1,4-Dichlorobenzene	12.036	146	39853	11.737	ug/L	96
67) 1,2-Dichlorobenzene	12.335	146	38800	11.411	ug/L	97
68) 1,2-Dibromo-3-chloropr...	12.945	75	6942	10.495	ug/L	95
69) 1,3,5-Trichlorobenzene	13.109	180	24766	11.175	ug/L	98
70) 1,2,4-trichlorobenzene	13.585	180	21290	10.683	ug/L	99
71) Naphthalene	13.774	128	84830	11.153	ug/L	100
72) 1,2,3-Trichlorobenzene	13.963	180	22234	10.888	ug/L	99

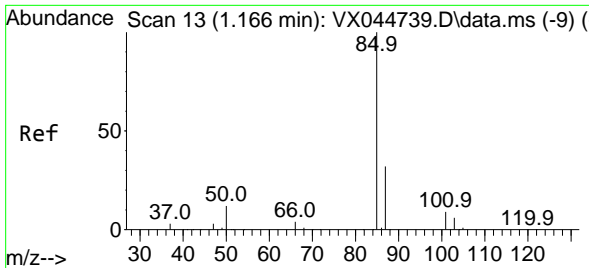
(#) = qualifier out of range (m) = manual integration (+) = signals summed

Data Path : Z:\voasrv\HPCHEM1\MSVOA_X\Data\VX012825\
 Data File : VX044738.D
 Acq On : 28 Jan 2025 10:15
 Operator : JC/MD
 Sample : VSTD01062
 Misc : 5.0mL/MSVOA_X/WATER
 ALS Vial : 4 Sample Multiplier: 1

Instrument :
 MSVOA_X
 ClientSampleId :

Quant Time: Jan 28 11:12:28 2025
 Quant Method : Z:\voasrv\HPCHEM1\MSVOA_X\Method\SFAMXLM012825WMA.M
 Quant Title : VOC Analysis
 QLast Update : Tue Jan 28 11:11:44 2025
 Response via : Initial Calibration

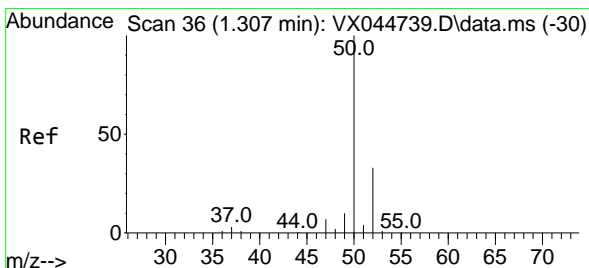
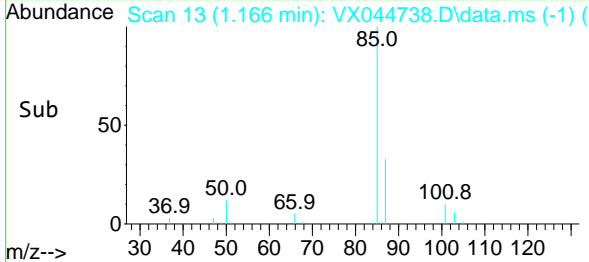
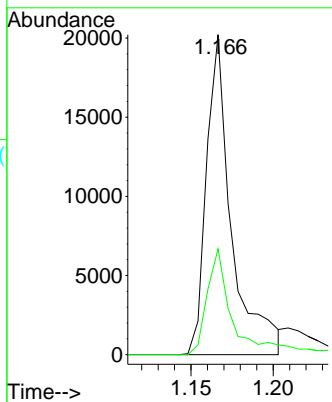
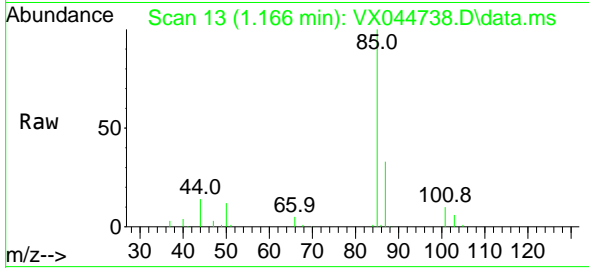




#2
 Dichlorodifluoromethane
 Concen: 10.991 ug/L
 RT: 1.166 min Scan# 11
 Delta R.T. -0.000 min
 Lab File: VX044738.D
 Acq: 28 Jan 2025 10:15

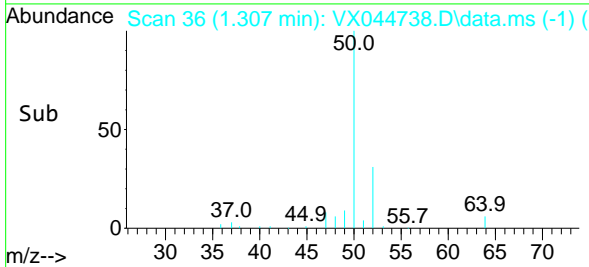
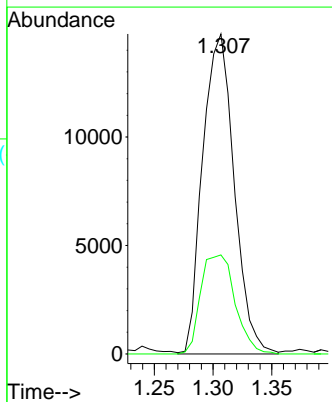
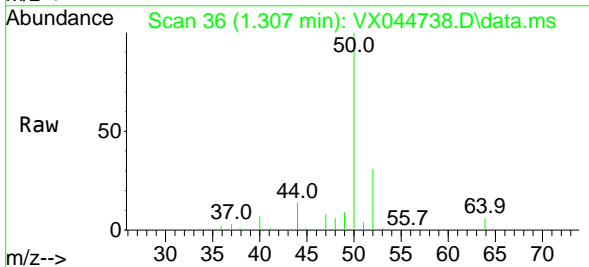
Instrument :
 MSVOA_X
 ClientSampleId :

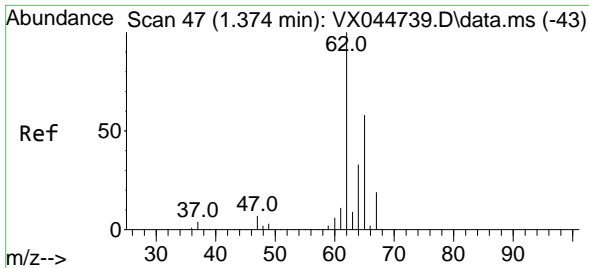
Tgt Ion: 85 Resp: 21415
 Ion Ratio Lower Upper
 85 100
 87 29.4 25.9 38.9



#3
 Chloromethane
 Concen: 11.645 ug/L
 RT: 1.307 min Scan# 36
 Delta R.T. -0.000 min
 Lab File: VX044738.D
 Acq: 28 Jan 2025 10:15

Tgt Ion: 50 Resp: 27539
 Ion Ratio Lower Upper
 50 100
 52 30.9 23.3 43.3

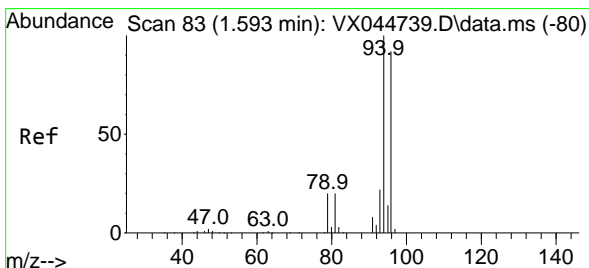
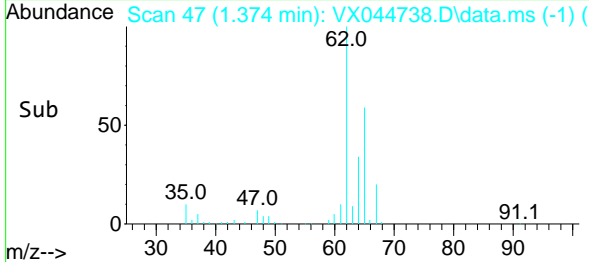
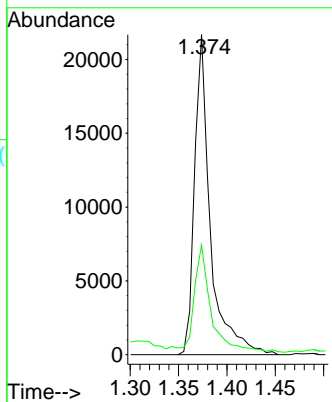
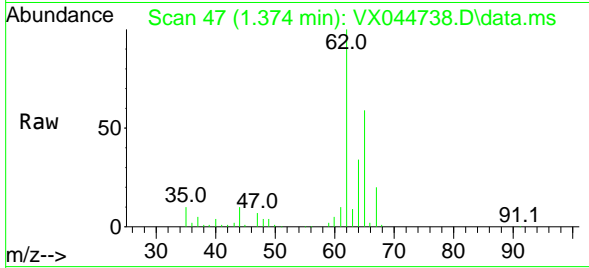




#5
 Vinyl chloride
 Concen: 10.749 ug/L
 RT: 1.374 min Scan# 41
 Delta R.T. -0.000 min
 Lab File: VX044738.D
 Acq: 28 Jan 2025 10:15

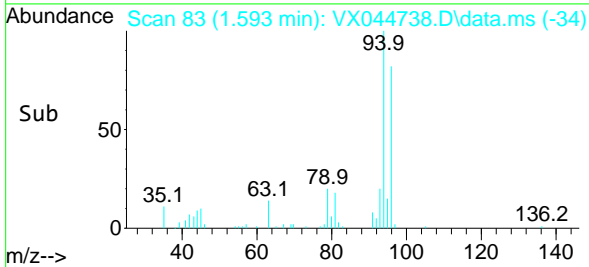
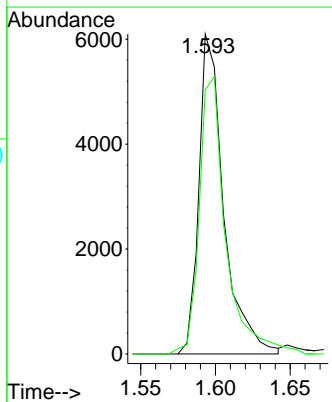
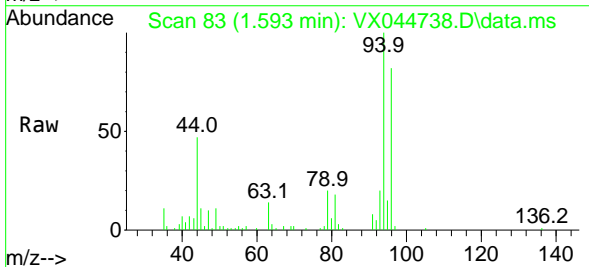
Instrument :
 MSVOA_X
 ClientSampleId :

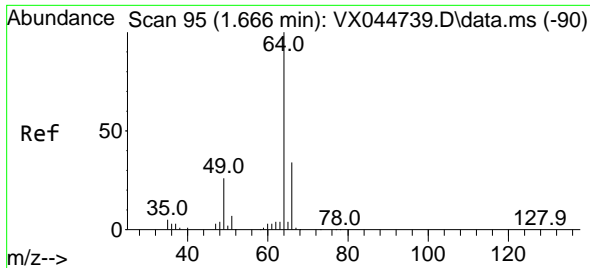
Tgt Ion: 62 Resp: 24594
 Ion Ratio Lower Upper
 62 100
 64 34.2 23.7 44.1



#6
 Bromomethane
 Concen: 12.642 ug/L
 RT: 1.593 min Scan# 83
 Delta R.T. -0.000 min
 Lab File: VX044738.D
 Acq: 28 Jan 2025 10:15

Tgt Ion: 94 Resp: 7055
 Ion Ratio Lower Upper
 94 100
 96 82.5 64.3 119.3

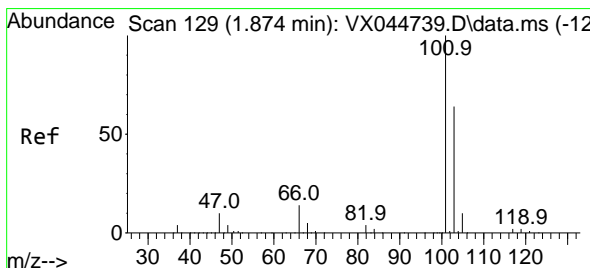
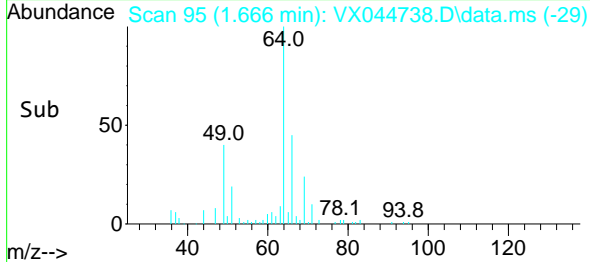
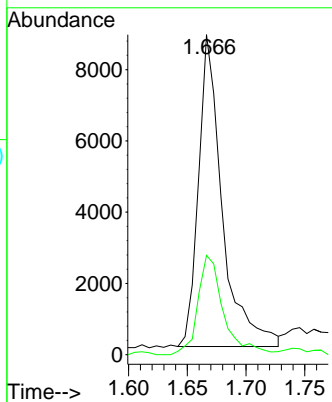
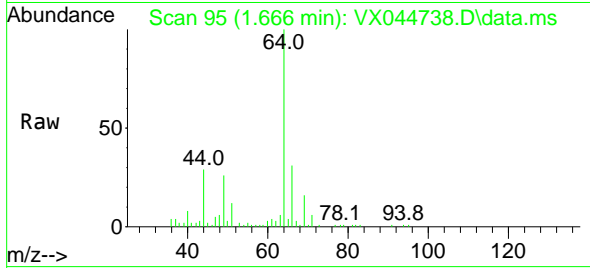




#8
 Chloroethane
 Concen: 20.289 ug/L
 RT: 1.666 min Scan# 91
 Delta R.T. -0.000 min
 Lab File: VX044738.D
 Acq: 28 Jan 2025 10:15

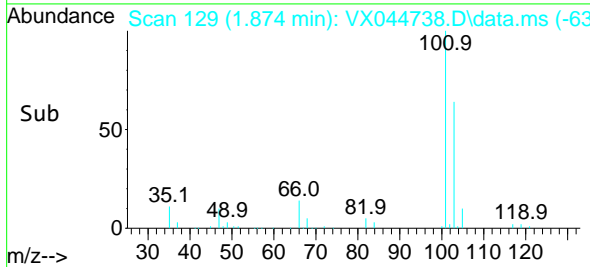
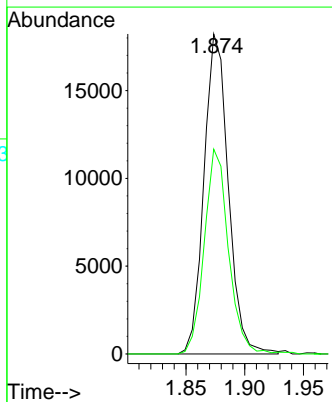
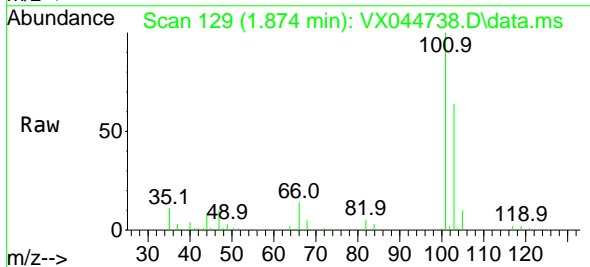
Instrument : MSVOA_X
 ClientSampleId :

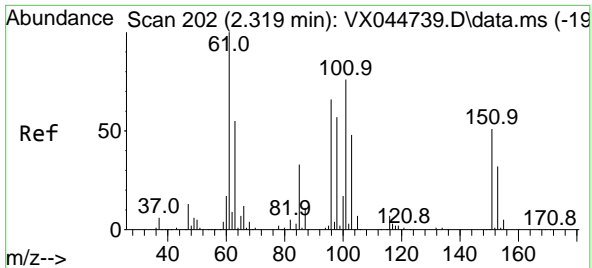
Tgt Ion: 64 Resp: 12329
 Ion Ratio Lower Upper
 64 100
 66 31.1 21.4 39.8



#9
 Trichlorofluoromethane
 Concen: 11.602 ug/L
 RT: 1.874 min Scan# 129
 Delta R.T. -0.000 min
 Lab File: VX044738.D
 Acq: 28 Jan 2025 10:15

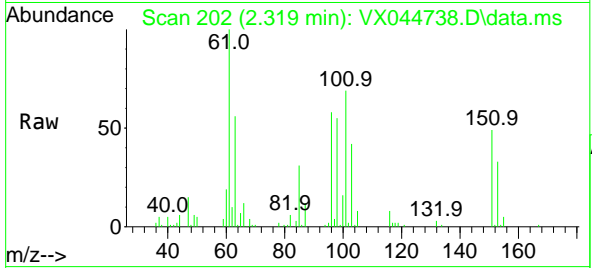
Tgt Ion: 101 Resp: 26299
 Ion Ratio Lower Upper
 101 100
 103 63.4 52.2 78.2



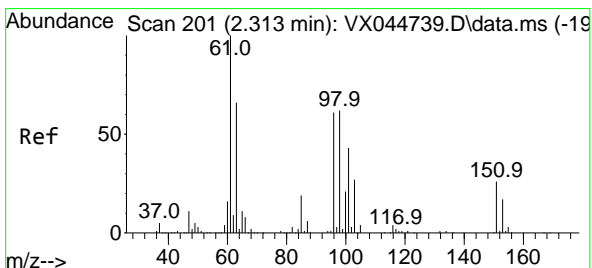
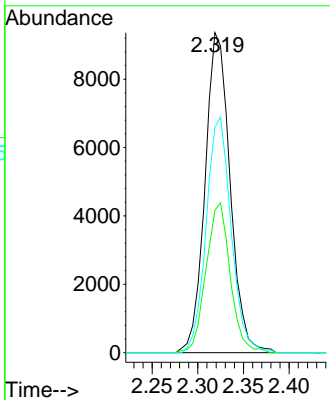
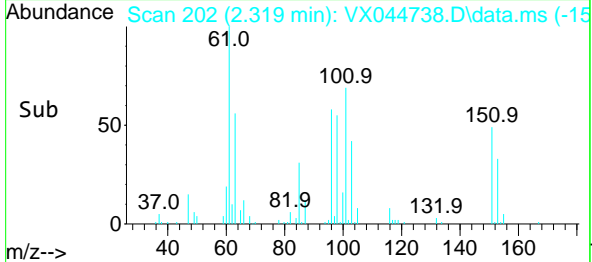


#10
 1,1,2-Trichloro-1,2,2-trifluoroethane
 Concen: 10.120 ug/L
 RT: 2.319 min Scan# 201
 Delta R.T. -0.000 min
 Lab File: VX044738.D
 Acq: 28 Jan 2025 10:15

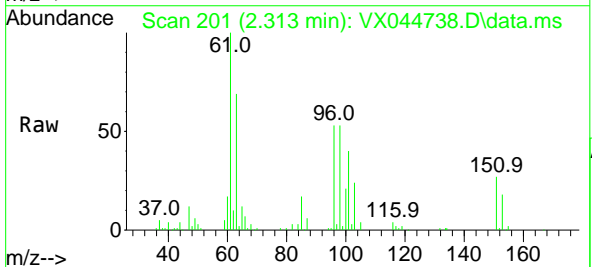
Instrument : MSVOA_X
 ClientSampleId :



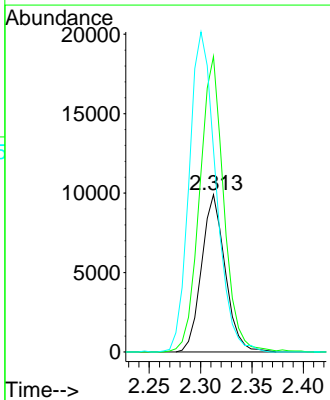
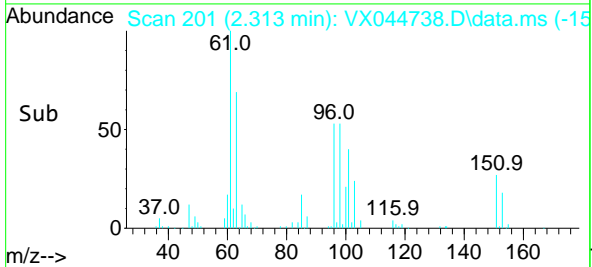
Tgt Ion: 101 Resp: 17832
 Ion Ratio Lower Upper
 101 100
 85 45.2 35.4 53.0
 151 73.5 57.0 85.4

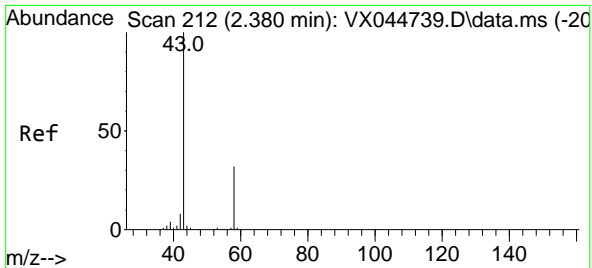


#12
 1,1-Dichloroethene
 Concen: 9.628 ug/L
 RT: 2.313 min Scan# 201
 Delta R.T. -0.000 min
 Lab File: VX044738.D
 Acq: 28 Jan 2025 10:15



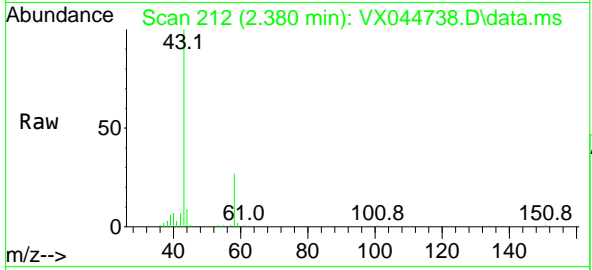
Tgt Ion: 96 Resp: 15801
 Ion Ratio Lower Upper
 96 100
 61 187.8 115.1 213.8
 63 128.7 74.1 137.5



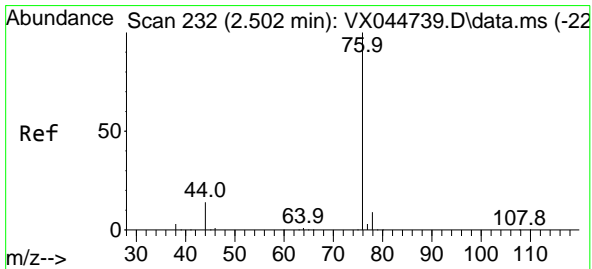
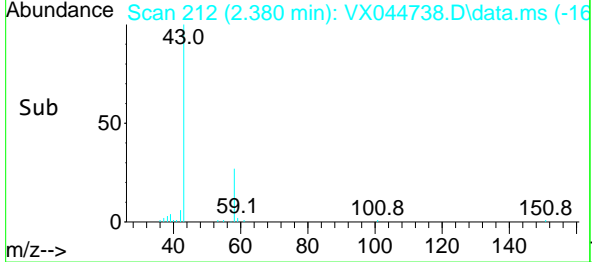
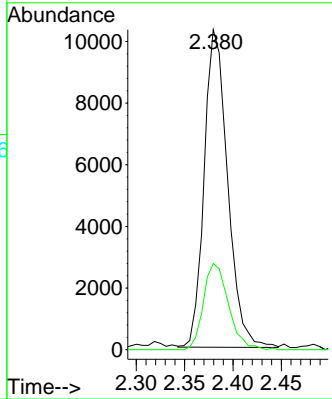


#13
 Acetone
 Concen: 20.181 ug/L
 RT: 2.380 min Scan# 213
 Delta R.T. -0.000 min
 Lab File: VX044738.D
 Acq: 28 Jan 2025 10:15

Instrument : MSVOA_X
 ClientSampleId :

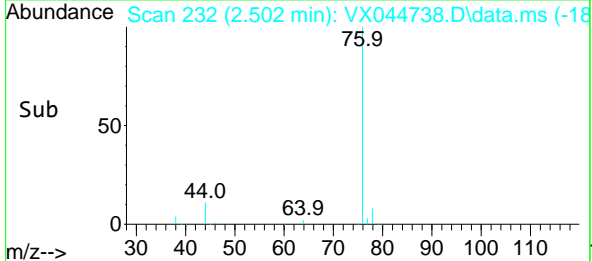
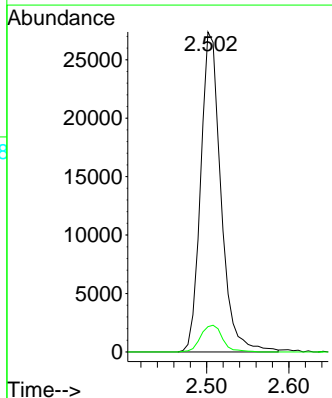
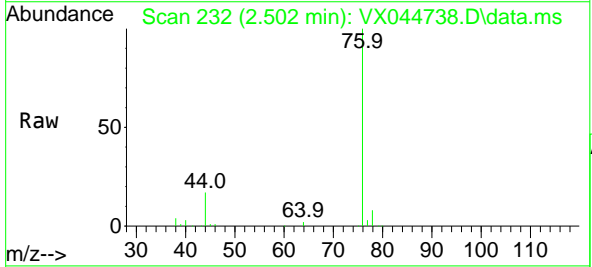


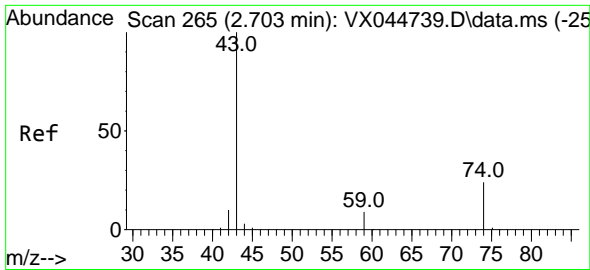
Tgt Ion: 43 Resp: 17358
 Ion Ratio Lower Upper
 43 100
 58 28.9 0.0 64.6



#14
 Carbon disulfide
 Concen: 9.060 ug/L
 RT: 2.502 min Scan# 232
 Delta R.T. -0.000 min
 Lab File: VX044738.D
 Acq: 28 Jan 2025 10:15

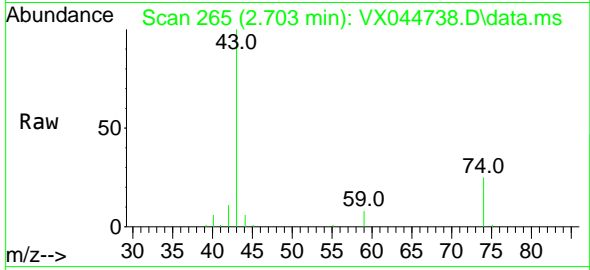
Tgt Ion: 76 Resp: 46871
 Ion Ratio Lower Upper
 76 100
 78 7.9 7.2 10.8



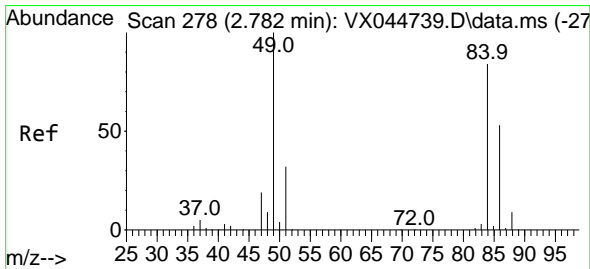
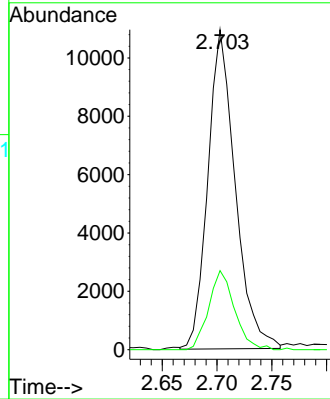
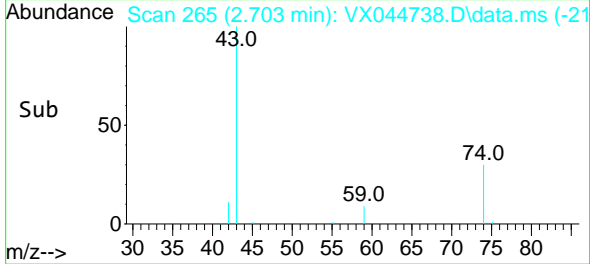


#15
 Methyl Acetate
 Concen: 9.240 ug/L
 RT: 2.703 min Scan# 20
 Delta R.T. -0.000 min
 Lab File: VX044738.D
 Acq: 28 Jan 2025 10:15

Instrument : MSVOA_X
 ClientSampleId :

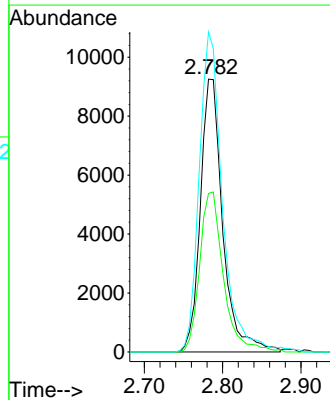
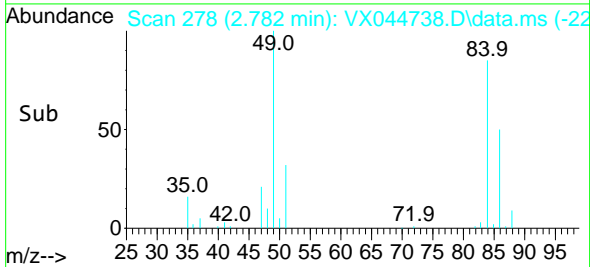
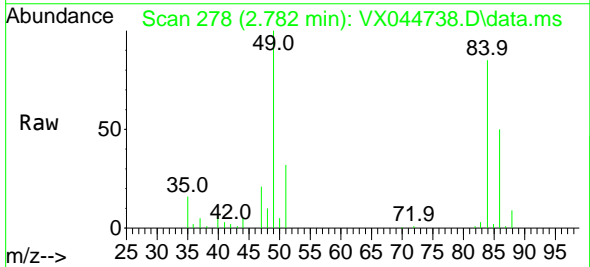


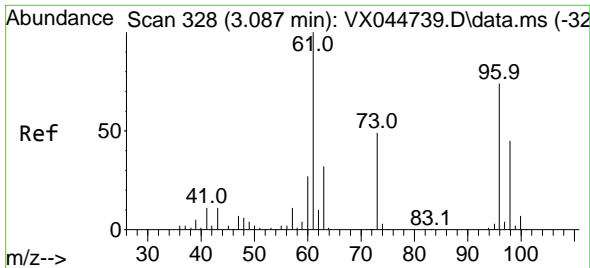
Tgt Ion: 43 Resp: 19003
 Ion Ratio Lower Upper
 43 100
 74 23.4 19.7 29.5



#16
 Methylene chloride
 Concen: 9.091 ug/L
 RT: 2.782 min Scan# 278
 Delta R.T. -0.000 min
 Lab File: VX044738.D
 Acq: 28 Jan 2025 10:15

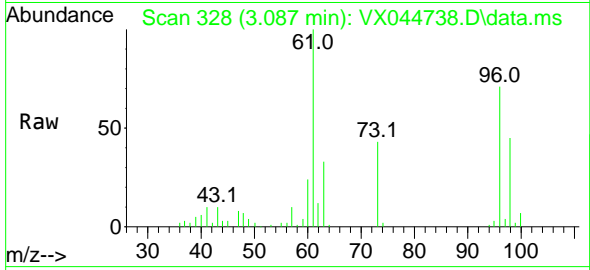
Tgt Ion: 84 Resp: 18418
 Ion Ratio Lower Upper
 84 100
 86 58.1 45.6 84.8
 49 117.3 84.6 157.0



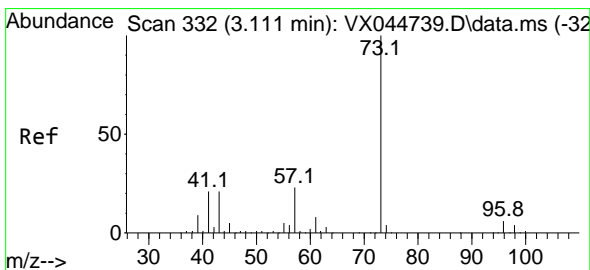
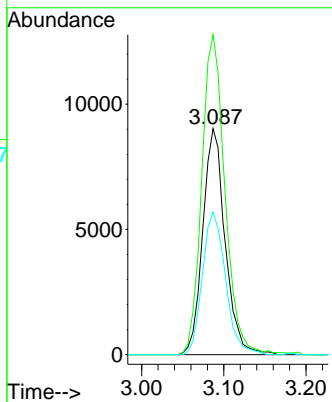
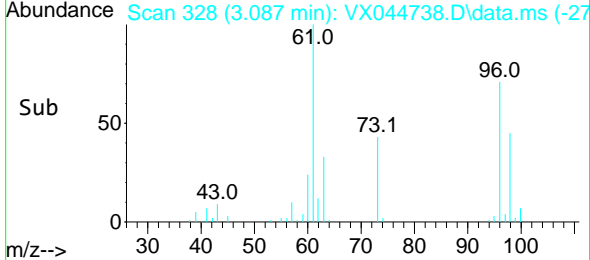


#17
 trans-1,2-Dichloroethene
 Concen: 9.319 ug/L
 RT: 3.087 min Scan# 311
 Delta R.T. -0.000 min
 Lab File: VX044738.D
 Acq: 28 Jan 2025 10:15

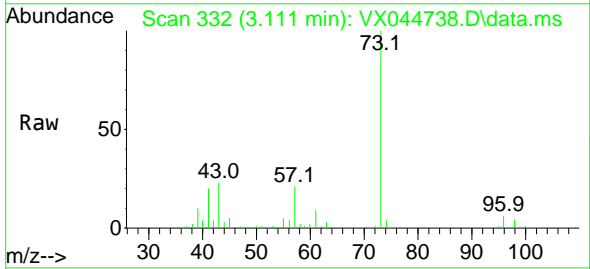
Instrument : MSVOA_X
 ClientSampleId :



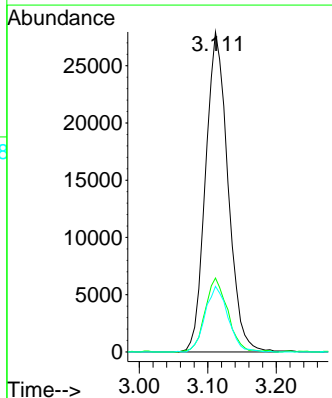
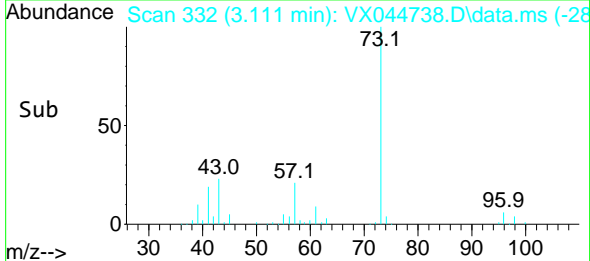
Tgt Ion: 96 Resp: 17068
 Ion Ratio Lower Upper
 96 100
 61 141.6 98.3 182.7
 98 63.1 44.1 81.9

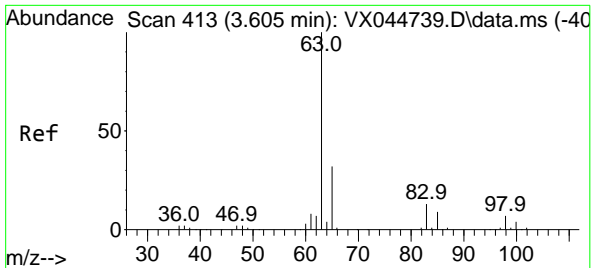


#18
 Methyl tert-butyl Ether
 Concen: 9.814 ug/L
 RT: 3.111 min Scan# 332
 Delta R.T. -0.000 min
 Lab File: VX044738.D
 Acq: 28 Jan 2025 10:15



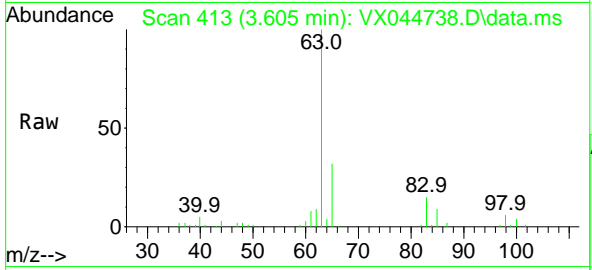
Tgt Ion: 73 Resp: 63692
 Ion Ratio Lower Upper
 73 100
 43 23.0 16.9 25.3
 57 20.9 17.4 26.0





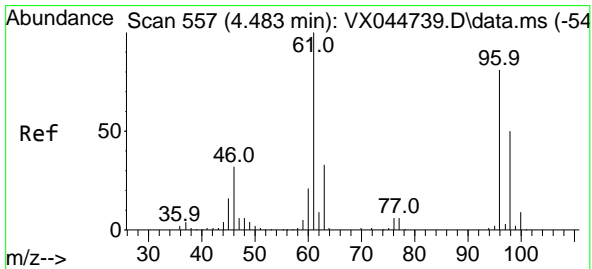
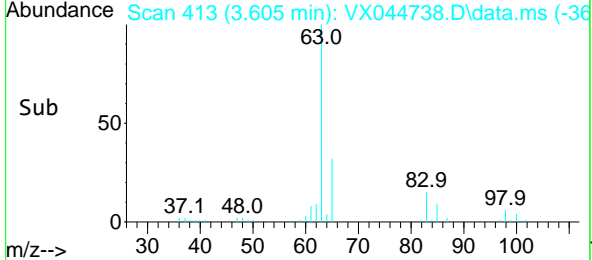
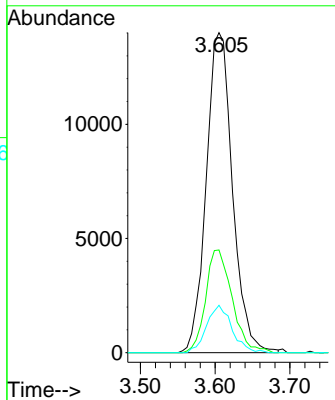
#19
 1,1-Dichloroethane
 Concen: 9.482 ug/L
 RT: 3.605 min Scan# 411
 Delta R.T. -0.000 min
 Lab File: VX044738.D
 Acq: 28 Jan 2025 10:15

Instrument : MSVOA_X
 ClientSampleId :



Tgt Ion: 63 Resp: 34249

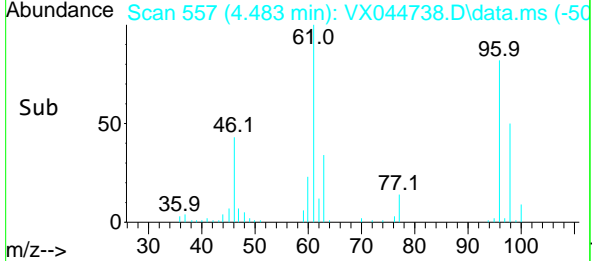
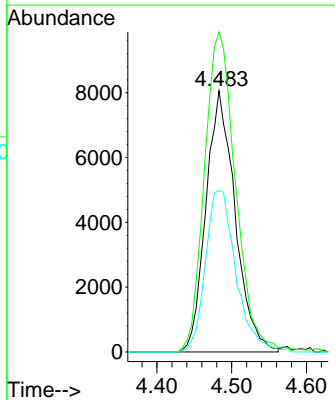
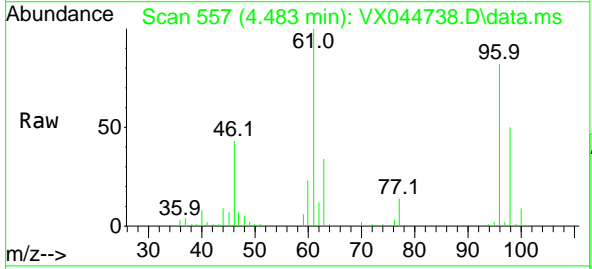
Ion	Ratio	Lower	Upper
63	100		
65	32.1	21.8	40.6
83	14.8	9.4	17.4

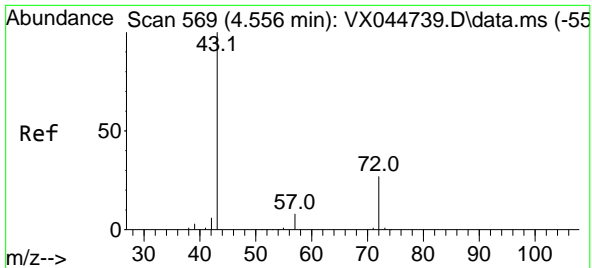


#20
 cis-1,2-Dichloroethene
 Concen: 9.945 ug/L
 RT: 4.483 min Scan# 557
 Delta R.T. -0.000 min
 Lab File: VX044738.D
 Acq: 28 Jan 2025 10:15

Tgt Ion: 96 Resp: 21877

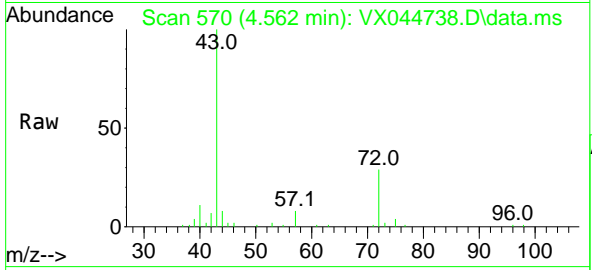
Ion	Ratio	Lower	Upper
96	100		
61	122.5	88.3	163.9
98	61.8	44.6	82.8



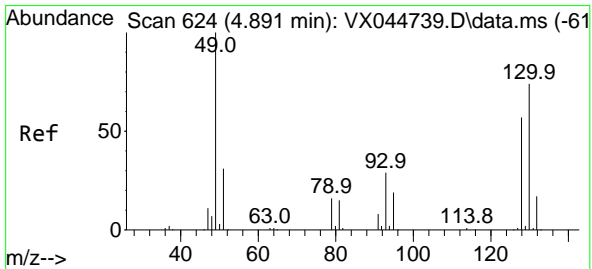
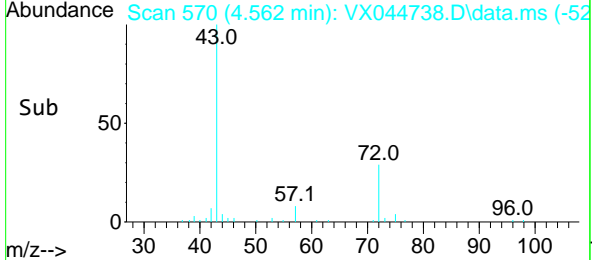
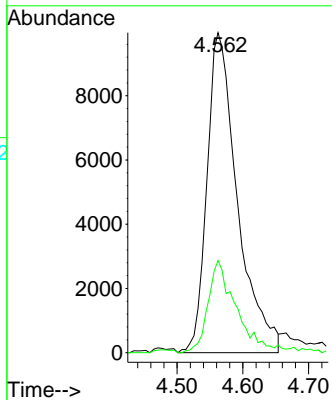


#22
 2-Butanone
 Concen: 23.655 ug/L
 RT: 4.562 min Scan# 51
 Delta R.T. 0.006 min
 Lab File: VX044738.D
 Acq: 28 Jan 2025 10:15

Instrument : MSVOA_X
 ClientSampleId :

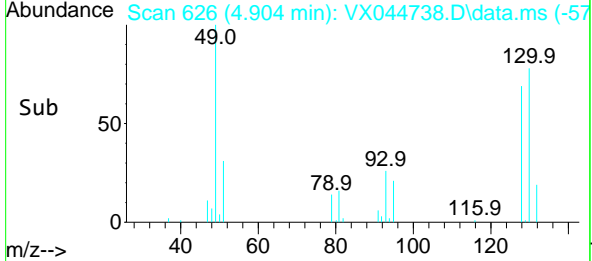
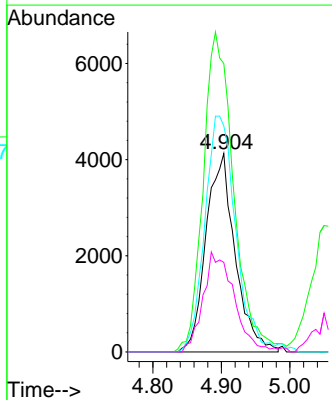
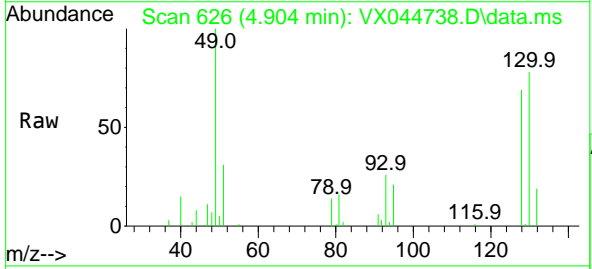


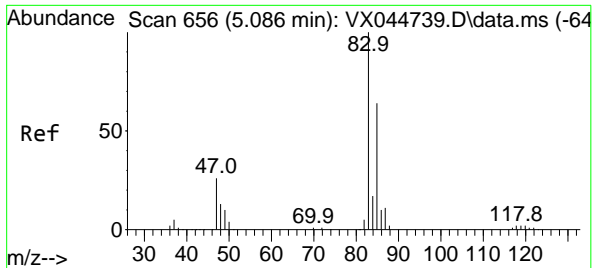
Tgt Ion: 43 Resp: 32066
 Ion Ratio Lower Upper
 43 100
 72 26.2 13.4 40.2



#23
 Bromochloromethane
 Concen: 11.375 ug/L
 RT: 4.904 min Scan# 626
 Delta R.T. 0.012 min
 Lab File: VX044738.D
 Acq: 28 Jan 2025 10:15

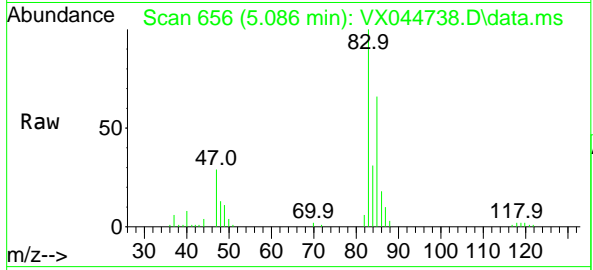
Tgt Ion:128 Resp: 12214
 Ion Ratio Lower Upper
 128 100
 49 145.4 117.6 218.4
 130 114.0 92.0 170.9
 51 45.1 44.2 66.4



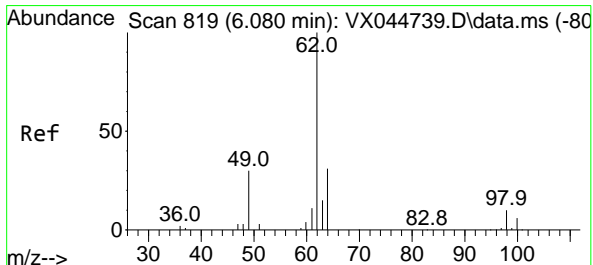
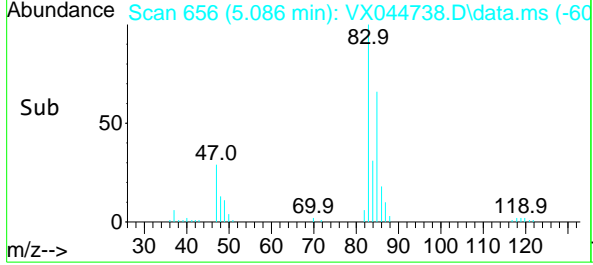
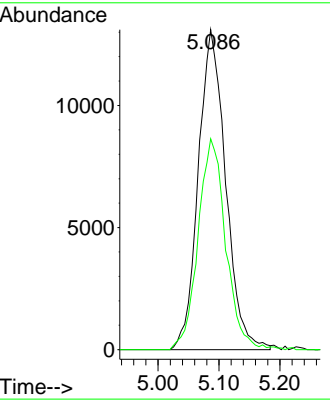


#25
 Chloroform
 Concen: 11.154 ug/L
 RT: 5.086 min Scan# 61
 Delta R.T. -0.000 min
 Lab File: VX044738.D
 Acq: 28 Jan 2025 10:15

Instrument : MSVOA_X
 ClientSampleId :

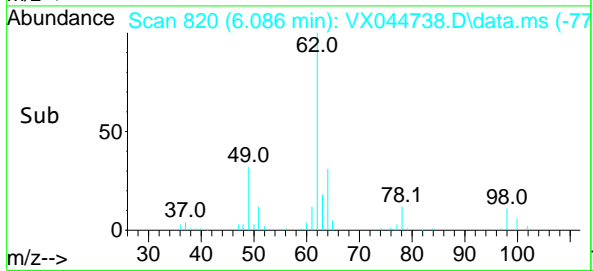
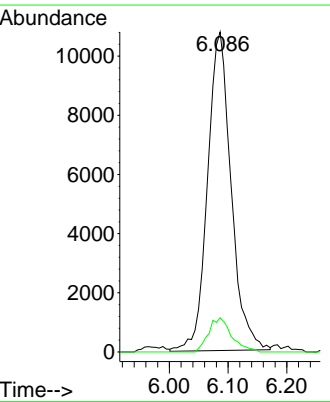
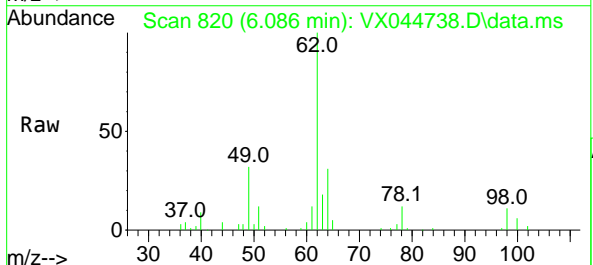


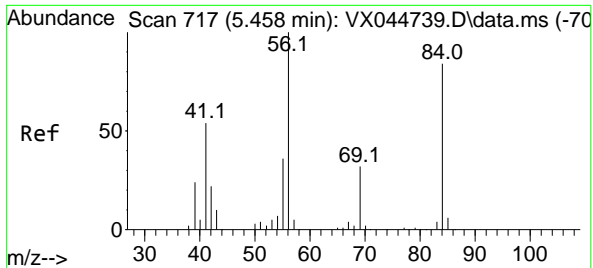
Tgt Ion: 83 Resp: 40861
 Ion Ratio Lower Upper
 83 100
 85 65.9 45.4 84.2



#27
 1,2-Dichloroethane
 Concen: 10.752 ug/L
 RT: 6.086 min Scan# 820
 Delta R.T. 0.006 min
 Lab File: VX044738.D
 Acq: 28 Jan 2025 10:15

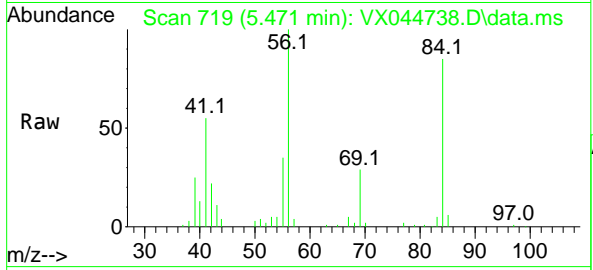
Tgt Ion: 62 Resp: 30050
 Ion Ratio Lower Upper
 62 100
 98 10.7 7.4 11.2





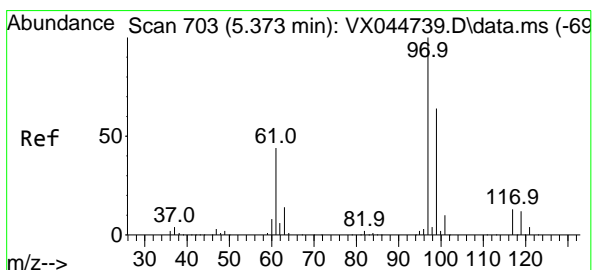
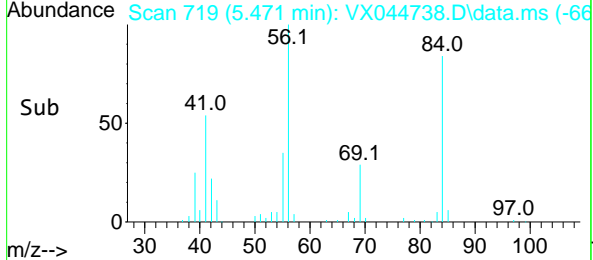
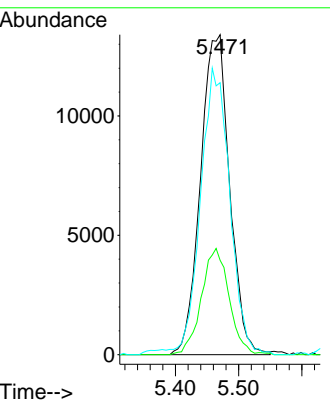
#29
 Cyclohexane
 Concen: 12.773 ug/L
 RT: 5.471 min Scan# 719
 Delta R.T. 0.012 min
 Lab File: VX044738.D
 Acq: 28 Jan 2025 10:15

Instrument : MSVOA_X
 ClientSampleId :

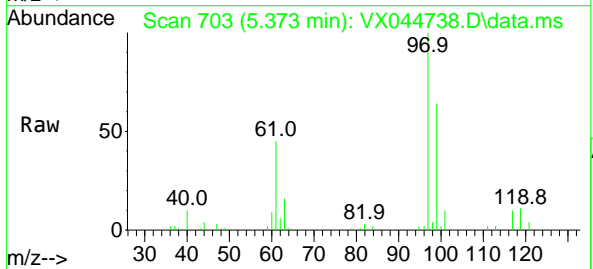


Tgt Ion: 56 Resp: 42940

Ion	Ratio	Lower	Upper
56	100		
69	31.3	25.4	38.2
84	88.9	71.6	107.4

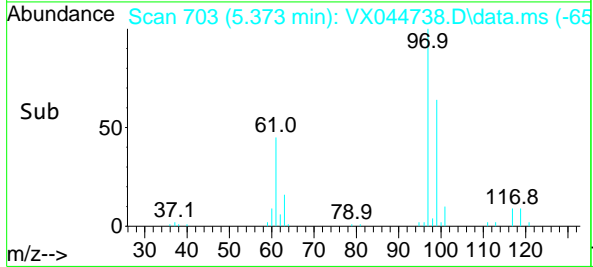
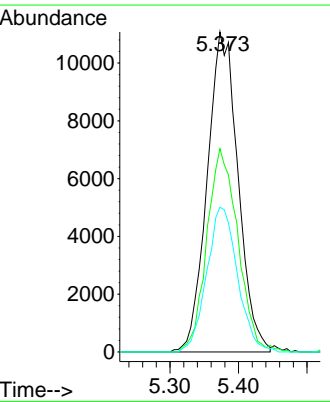


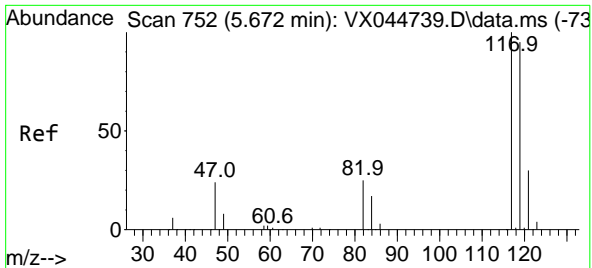
#30
 1,1,1-Trichloroethane
 Concen: 11.221 ug/L
 RT: 5.373 min Scan# 703
 Delta R.T. -0.000 min
 Lab File: VX044738.D
 Acq: 28 Jan 2025 10:15



Tgt Ion: 97 Resp: 34669

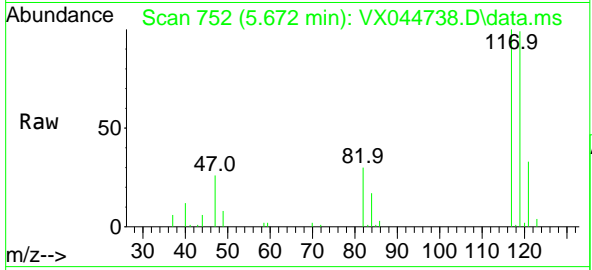
Ion	Ratio	Lower	Upper
97	100		
99	63.8	51.0	76.4
61	45.1	35.8	53.6



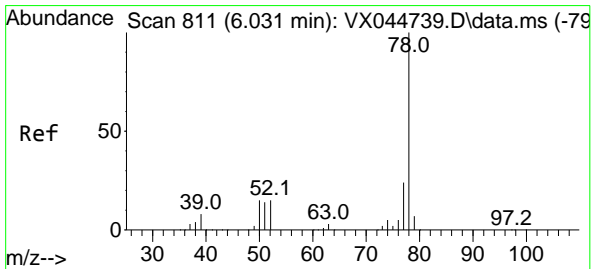
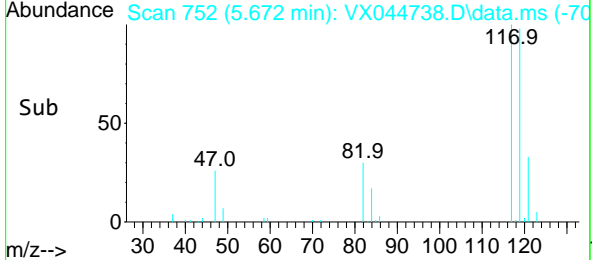
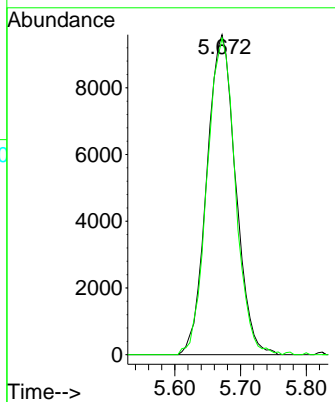


#31
 Carbon tetrachloride
 Concen: 11.004 ug/L
 RT: 5.672 min Scan# 711
 Delta R.T. -0.000 min
 Lab File: VX044738.D
 Acq: 28 Jan 2025 10:15

Instrument :
 MSVOA_X
 ClientSampleId :

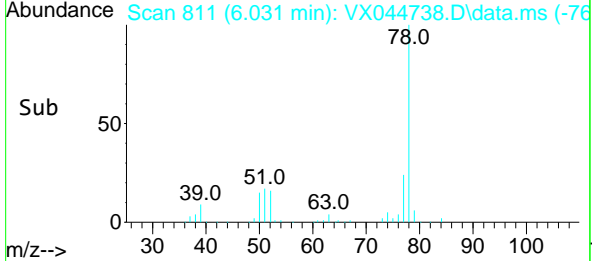
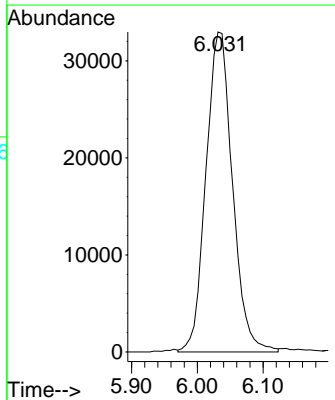
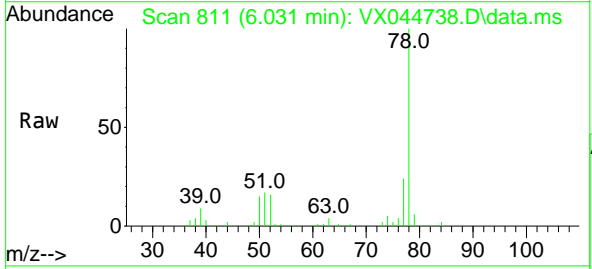


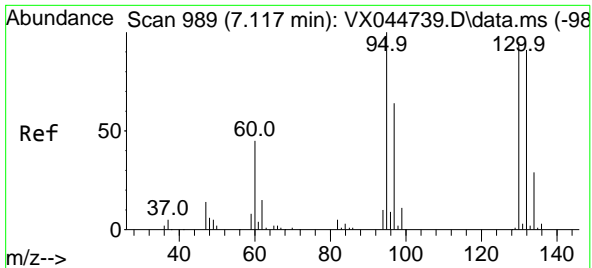
Tgt Ion:117 Resp: 29285
 Ion Ratio Lower Upper
 117 100
 119 96.9 77.1 115.7



#33
 Benzene
 Concen: 11.970 ug/L
 RT: 6.031 min Scan# 811
 Delta R.T. -0.000 min
 Lab File: VX044738.D
 Acq: 28 Jan 2025 10:15

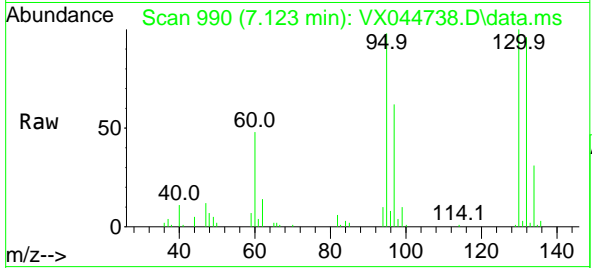
Tgt Ion: 78 Resp: 92689





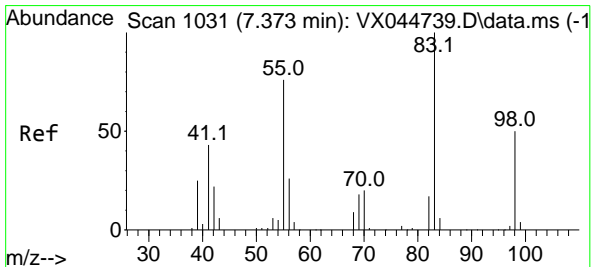
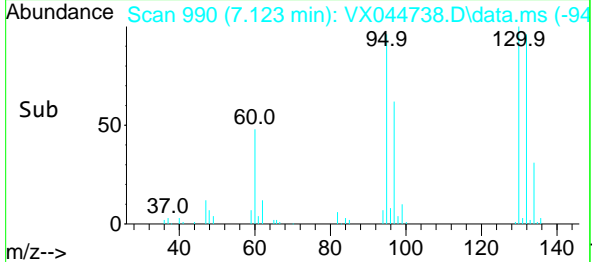
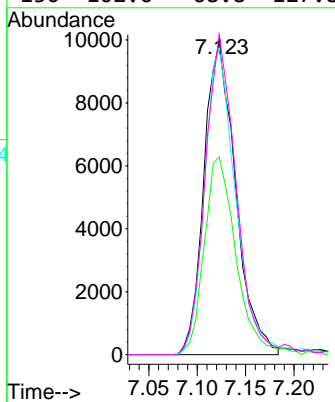
#34
 Trichloroethene
 Concen: 11.300 ug/L
 RT: 7.123 min Scan# 94
 Delta R.T. 0.006 min
 Lab File: VX044738.D
 Acq: 28 Jan 2025 10:15

Instrument : MSVOA_X
 ClientSampleId :



Tgt Ion: 95 Resp: 22687

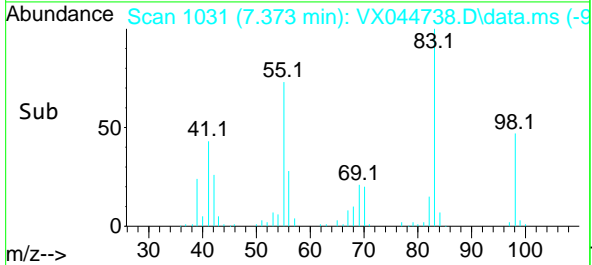
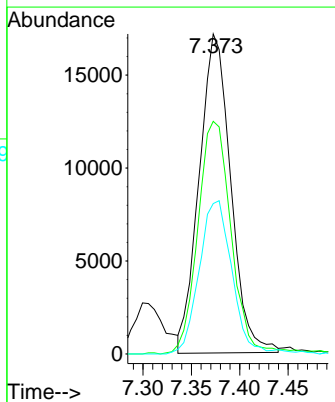
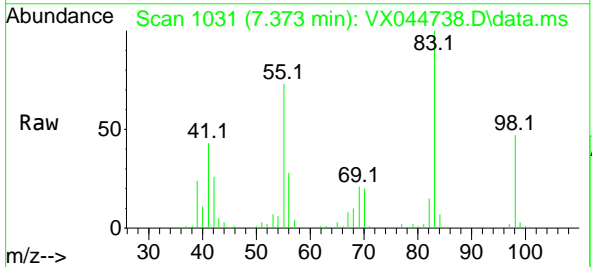
Ion	Ratio	Lower	Upper
95	100		
97	63.4	46.1	85.5
132	98.3	64.5	119.9
130	102.6	68.8	127.8

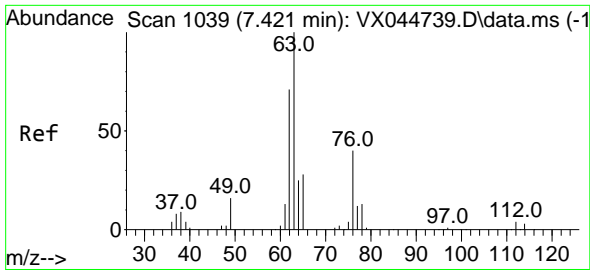


#35
 Methylcyclohexane
 Concen: 11.726 ug/L
 RT: 7.373 min Scan# 1031
 Delta R.T. -0.000 min
 Lab File: VX044738.D
 Acq: 28 Jan 2025 10:15

Tgt Ion: 83 Resp: 38970

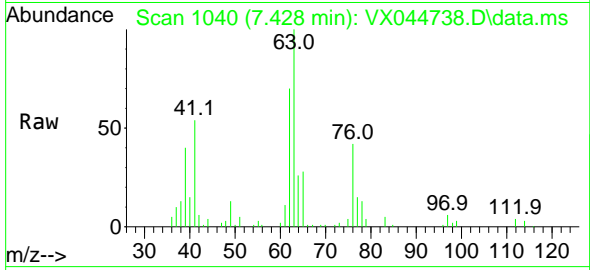
Ion	Ratio	Lower	Upper
83	100		
55	76.9	60.6	90.8
98	49.3	38.9	58.3



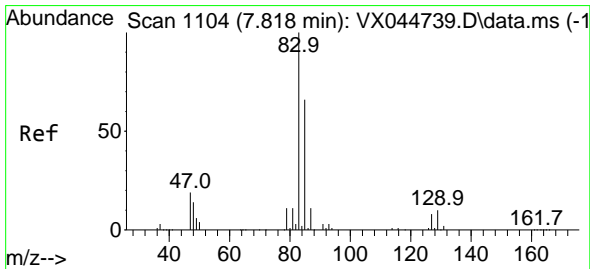
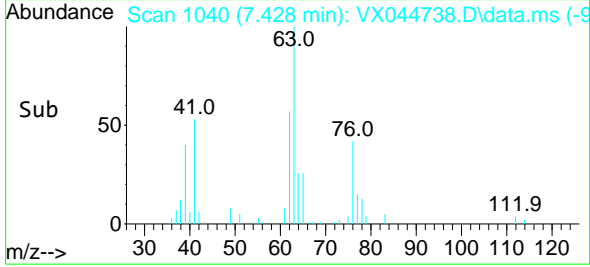
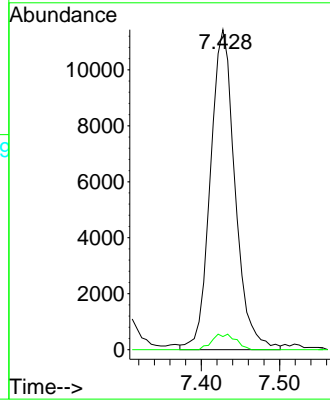


#37
 1,2-Dichloropropane
 Concen: 11.952 ug/L
 RT: 7.428 min Scan# 1040
 Delta R.T. 0.006 min
 Lab File: VX044738.D
 Acq: 28 Jan 2025 10:15

Instrument : MSVOA_X
 ClientSampleId :

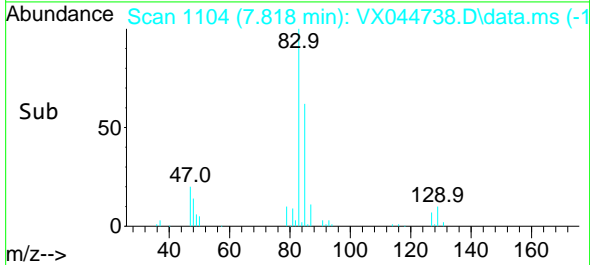
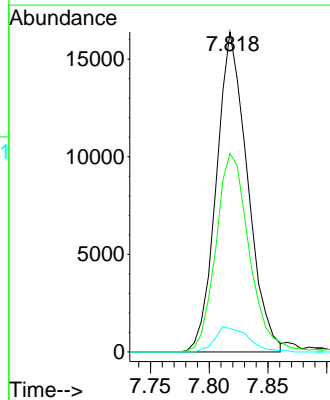
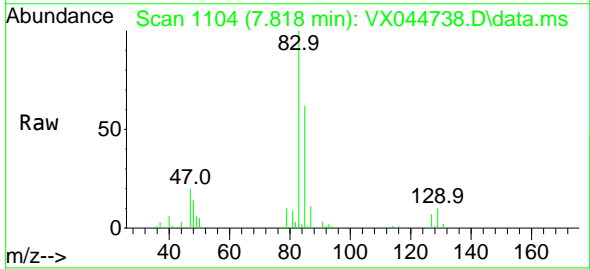


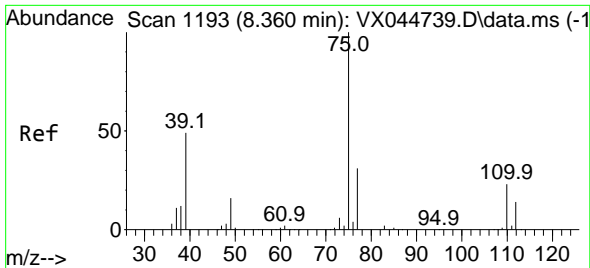
Tgt Ion: 63 Resp: 25046
 Ion Ratio Lower Upper
 63 100
 112 4.7 3.5 5.3



#38
 Bromodichloromethane
 Concen: 10.792 ug/L
 RT: 7.818 min Scan# 1104
 Delta R.T. -0.000 min
 Lab File: VX044738.D
 Acq: 28 Jan 2025 10:15

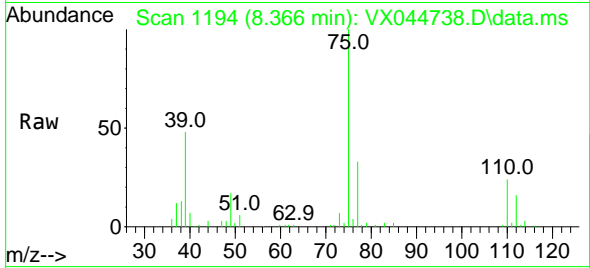
Tgt Ion: 83 Resp: 30160
 Ion Ratio Lower Upper
 83 100
 85 62.0 43.8 81.3
 127 7.3 6.5 9.7



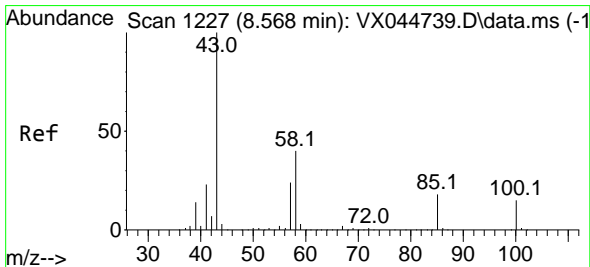
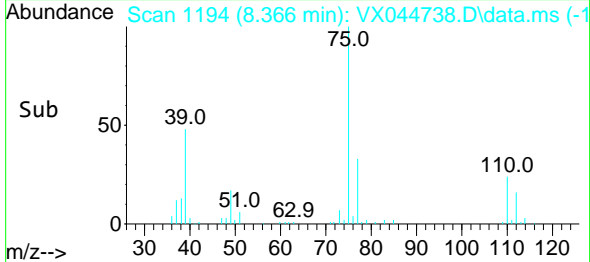
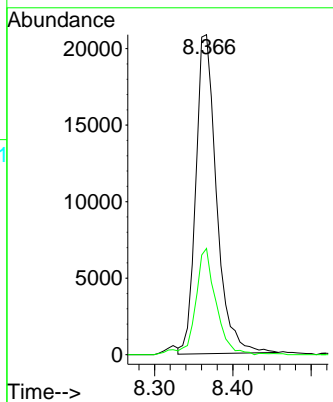


#39
 cis-1,3-Dichloropropene
 Concen: 10.768 ug/L
 RT: 8.366 min Scan# 1194
 Delta R.T. 0.006 min
 Lab File: VX044738.D
 Acq: 28 Jan 2025 10:15

Instrument : MSVOA_X
 ClientSampleId :

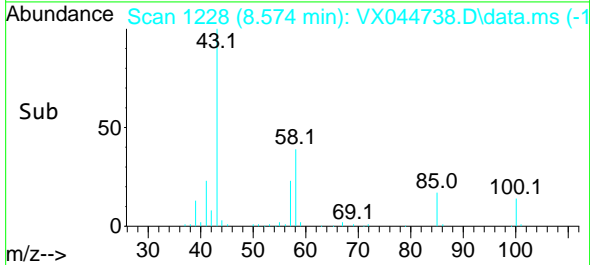
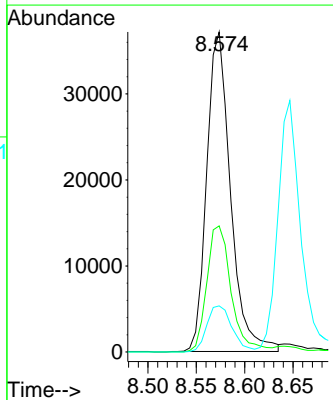
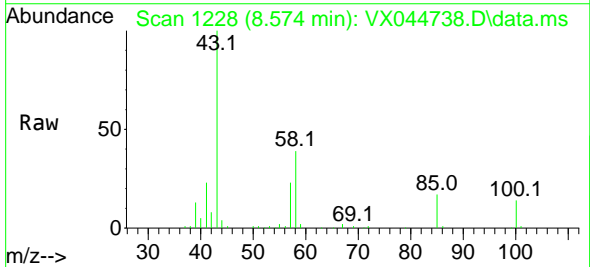


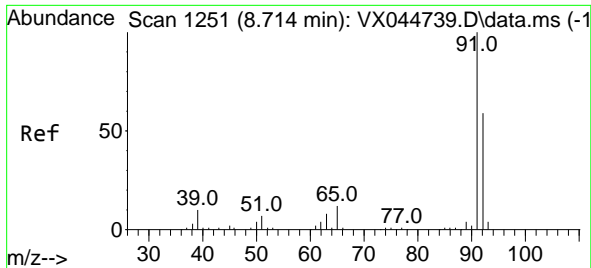
Tgt Ion: 75 Resp: 38425
 Ion Ratio Lower Upper
 75 100
 77 33.2 21.7 40.3



#40
 4-Methyl-2-pentanone
 Concen: 24.438 ug/L
 RT: 8.574 min Scan# 1228
 Delta R.T. 0.006 min
 Lab File: VX044738.D
 Acq: 28 Jan 2025 10:15

Tgt Ion: 43 Resp: 63756
 Ion Ratio Lower Upper
 43 100
 58 40.4 32.1 48.1
 100 15.3 12.9 19.3

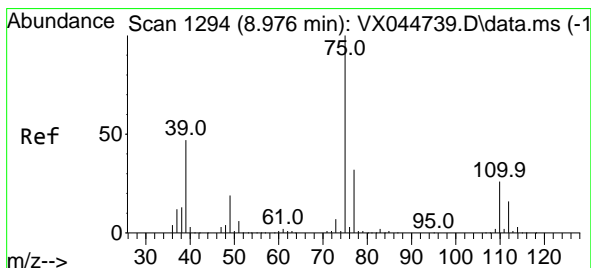
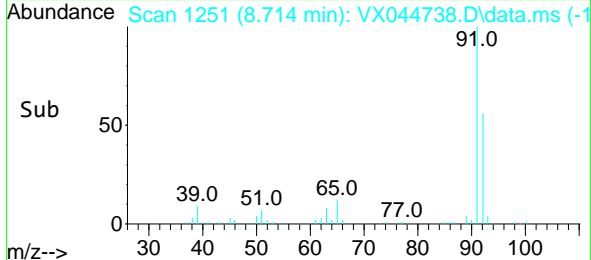
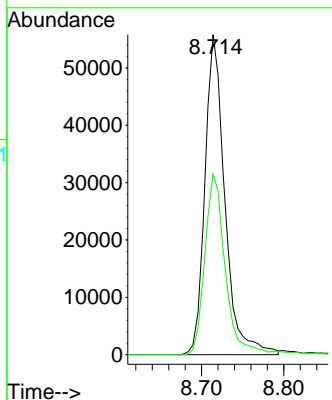
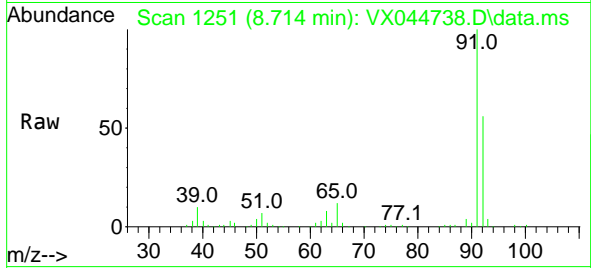




#42
 Toluene
 Concen: 11.680 ug/L
 RT: 8.714 min Scan# 1251
 Delta R.T. -0.000 min
 Lab File: VX044738.D
 Acq: 28 Jan 2025 10:15

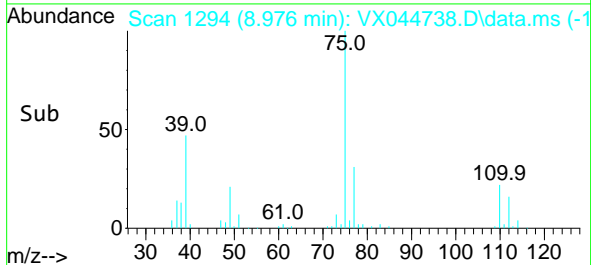
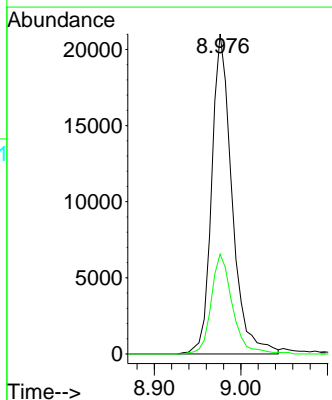
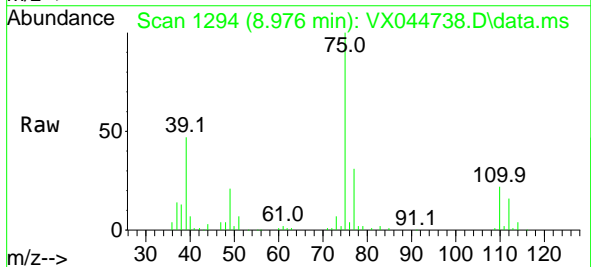
Instrument : MSVOA_X
 ClientSampleId :

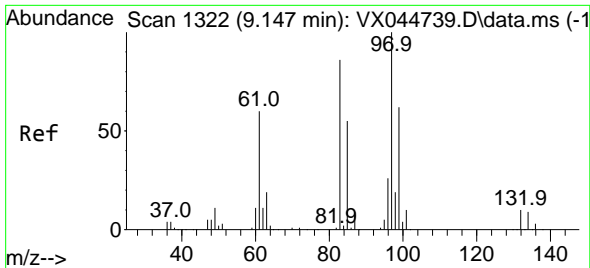
Tgt Ion: 91 Resp: 93864
 Ion Ratio Lower Upper
 91 100
 92 56.4 40.7 75.5



#44
 trans-1,3-Dichloropropene
 Concen: 10.623 ug/L
 RT: 8.976 min Scan# 1294
 Delta R.T. -0.000 min
 Lab File: VX044738.D
 Acq: 28 Jan 2025 10:15

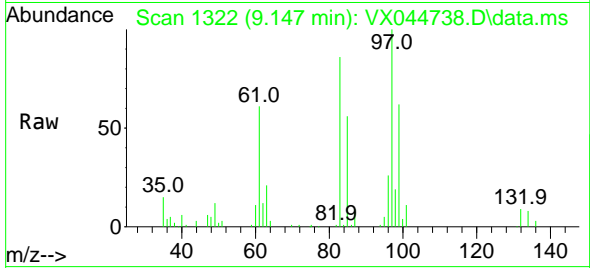
Tgt Ion: 75 Resp: 34292
 Ion Ratio Lower Upper
 75 100
 77 31.2 22.4 41.6





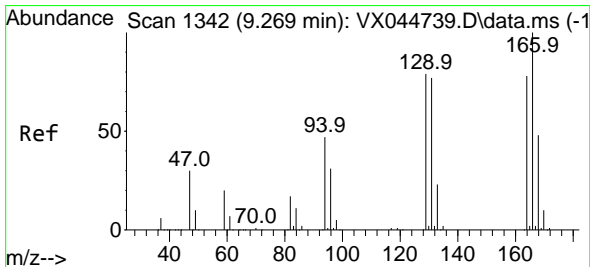
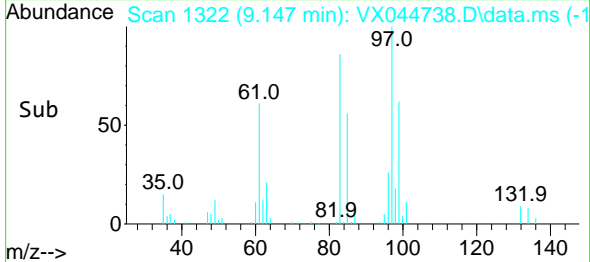
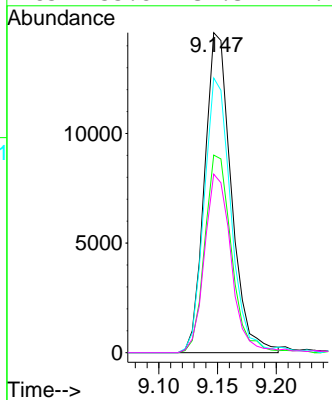
#45
 1,1,2-Trichloroethane
 Concen: 11.359 ug/L
 RT: 9.147 min Scan# 11
 Delta R.T. -0.000 min
 Lab File: VX044738.D
 Acq: 28 Jan 2025 10:15

Instrument : MSVOA_X
 ClientSampleId :



Tgt Ion: 97 Resp: 23129

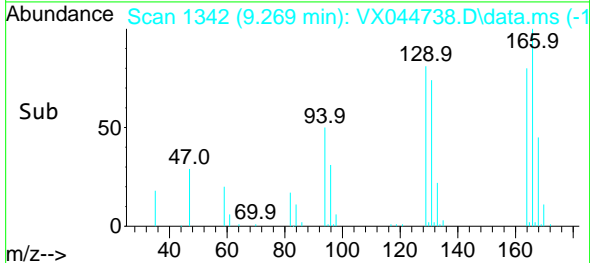
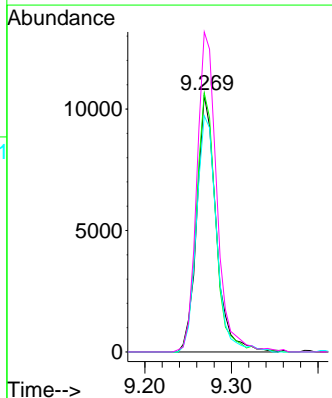
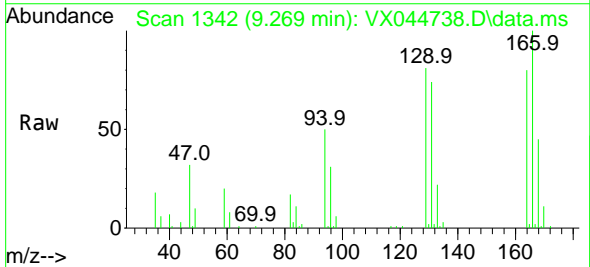
Ion	Ratio	Lower	Upper
97	100		
99	61.8	44.8	83.2
83	85.8	60.8	113.0
85	55.8	39.3	72.9

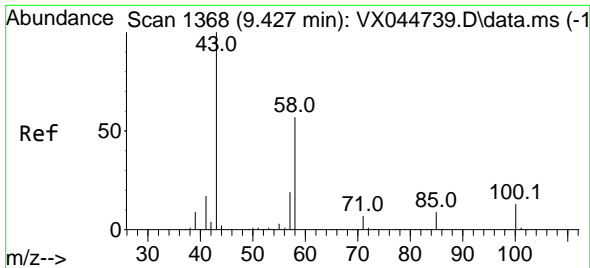


#46
 Tetrachloroethene
 Concen: 11.881 ug/L
 RT: 9.269 min Scan# 1342
 Delta R.T. -0.000 min
 Lab File: VX044738.D
 Acq: 28 Jan 2025 10:15

Tgt Ion: 164 Resp: 16377

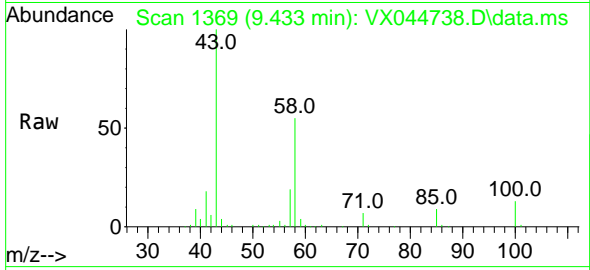
Ion	Ratio	Lower	Upper
164	100		
129	100.8	71.2	132.2
131	92.0	67.2	124.8
166	124.6	90.0	167.2





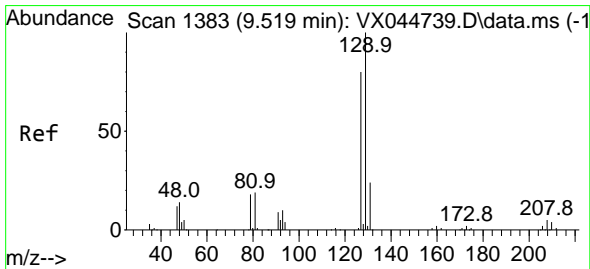
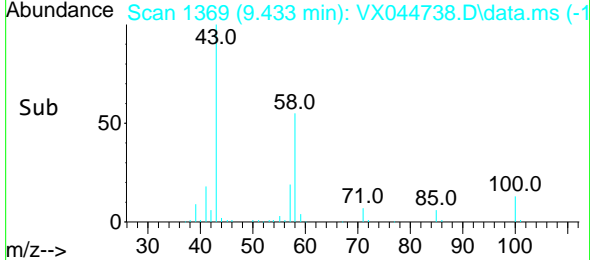
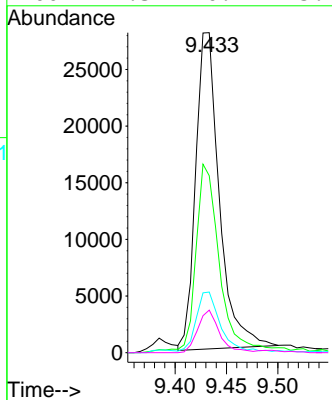
#48
 2-Hexanone
 Concen: 23.288 ug/L
 RT: 9.433 min Scan# 1369
 Delta R.T. 0.006 min
 Lab File: VX044738.D
 Acq: 28 Jan 2025 10:15

Instrument : MSVOA_X
 ClientSampleId :



Tgt Ion: 43 Resp: 44921

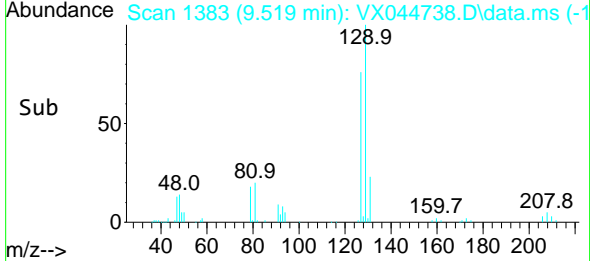
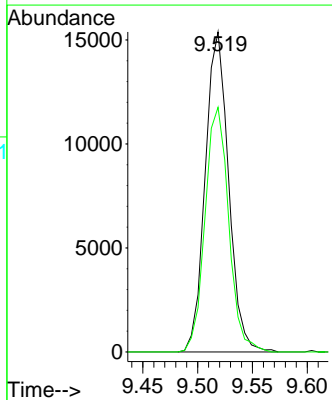
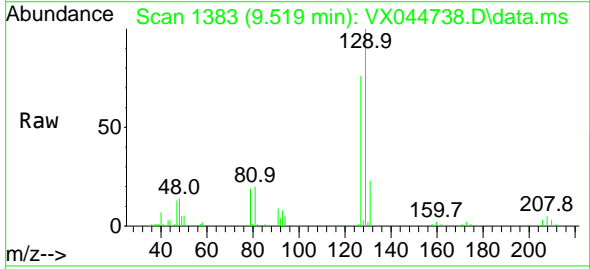
Ion	Ratio	Lower	Upper
43	100		
58	58.4	44.3	66.5
57	19.1	15.9	23.9
100	12.3	10.1	15.1

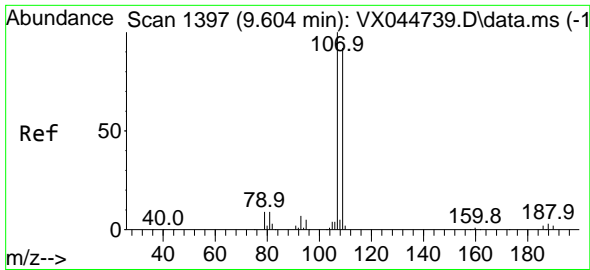


#49
 Dibromochloromethane
 Concen: 10.869 ug/L
 RT: 9.519 min Scan# 1383
 Delta R.T. -0.000 min
 Lab File: VX044738.D
 Acq: 28 Jan 2025 10:15

Tgt Ion: 129 Resp: 22817

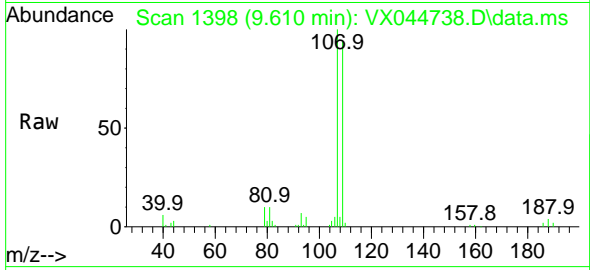
Ion	Ratio	Lower	Upper
129	100		
127	76.4	53.6	99.6



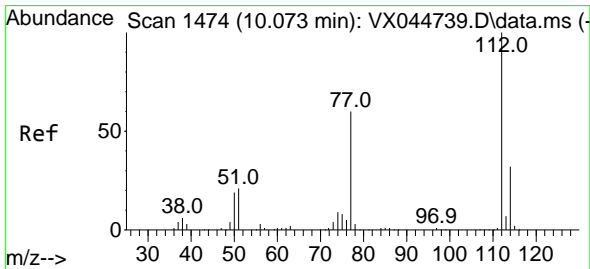
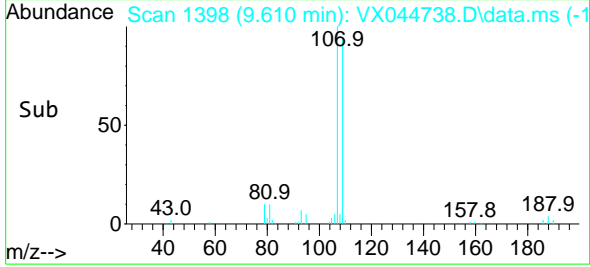
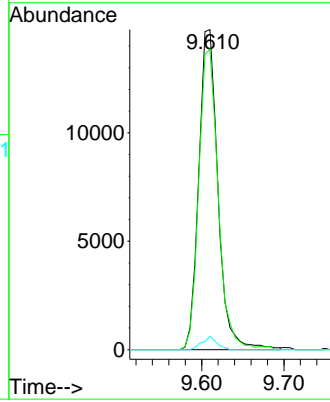


#50
 1,2-Dibromoethane
 Concen: 11.470 ug/L
 RT: 9.610 min Scan# 1398
 Delta R.T. 0.006 min
 Lab File: VX044738.D
 Acq: 28 Jan 2025 10:15

Instrument : MSVOA_X
 ClientSampleId :

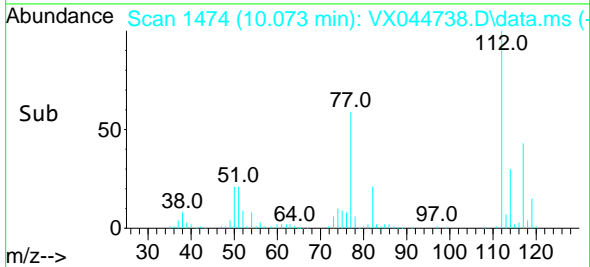
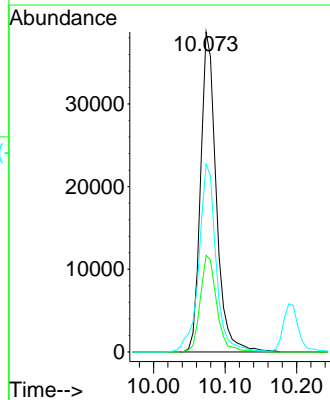
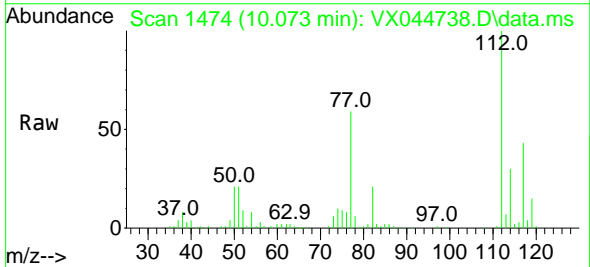


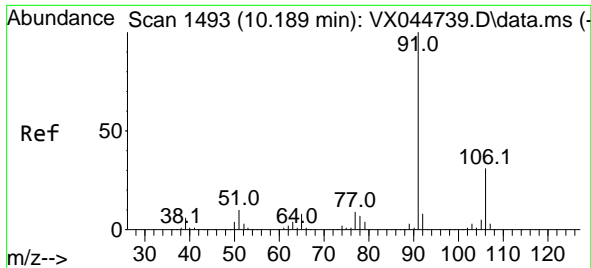
Tgt Ion:107 Resp: 23905
 Ion Ratio Lower Upper
 107 100
 109 93.9 67.2 124.8
 188 4.2 2.2 3.4#



#51
 Chlorobenzene
 Concen: 11.769 ug/L
 RT: 10.073 min Scan# 1474
 Delta R.T. -0.000 min
 Lab File: VX044738.D
 Acq: 28 Jan 2025 10:15

Tgt Ion:112 Resp: 58836
 Ion Ratio Lower Upper
 112 100
 114 30.2 22.4 41.6
 77 58.6 49.2 73.8

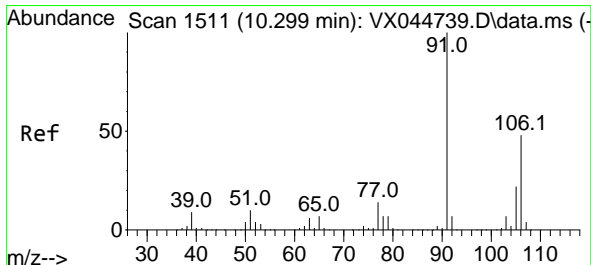
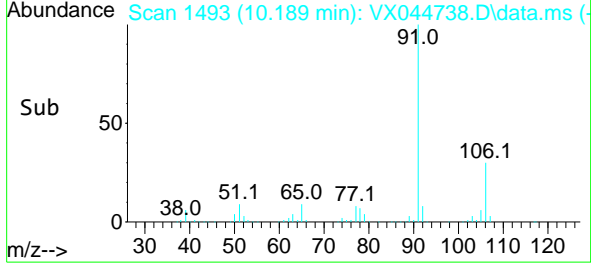
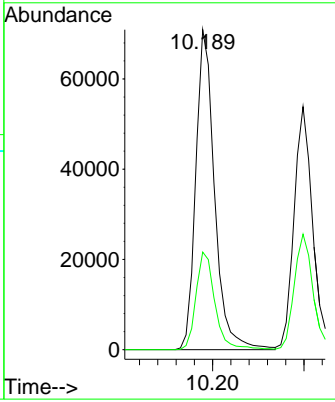
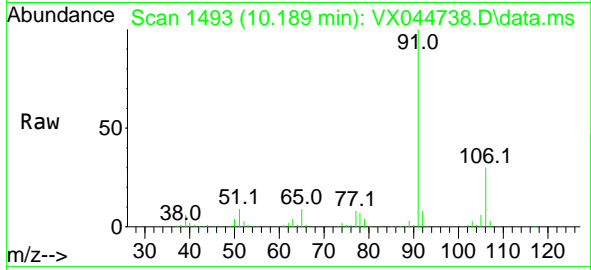




#52
 Ethylbenzene
 Concen: 11.628 ug/L
 RT: 10.189 min Scan# 1493
 Delta R.T. -0.000 min
 Lab File: VX044738.D
 Acq: 28 Jan 2025 10:15

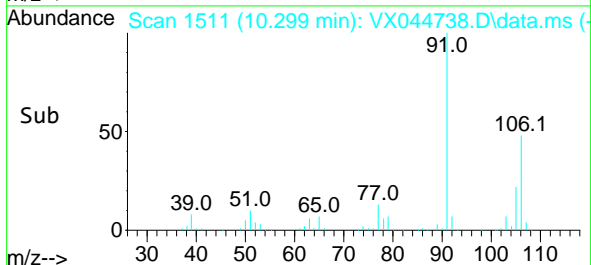
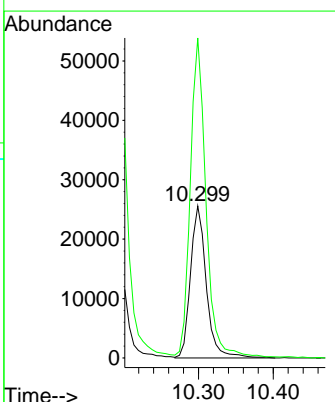
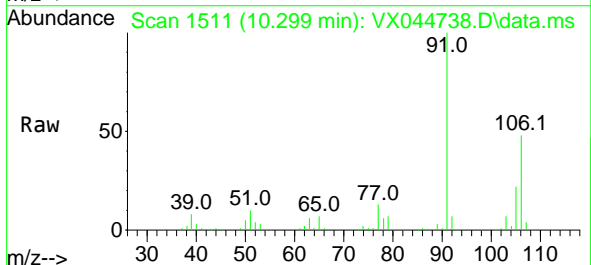
Instrument : MSVOA_X
 ClientSampleId :

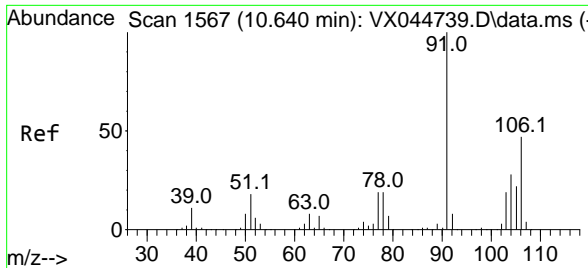
Tgt Ion: 91 Resp: 101237
 Ion Ratio Lower Upper
 91 100
 106 30.5 21.1 39.3



#53
 m,p-Xylene
 Concen: 11.564 ug/L
 RT: 10.299 min Scan# 1511
 Delta R.T. -0.000 min
 Lab File: VX044738.D
 Acq: 28 Jan 2025 10:15

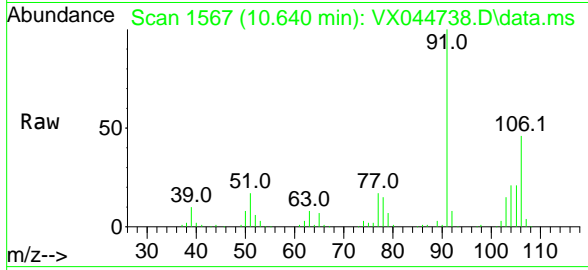
Tgt Ion: 106 Resp: 37681
 Ion Ratio Lower Upper
 106 100
 91 210.5 145.2 269.6



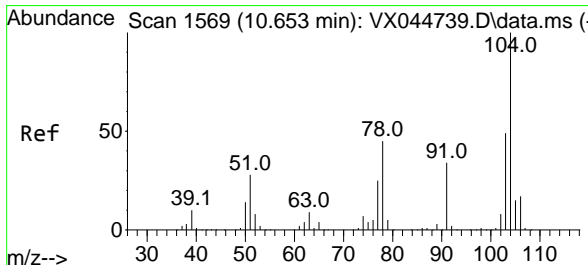
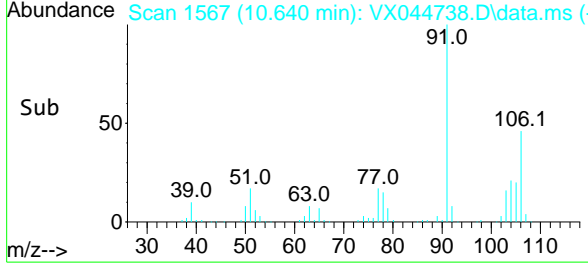
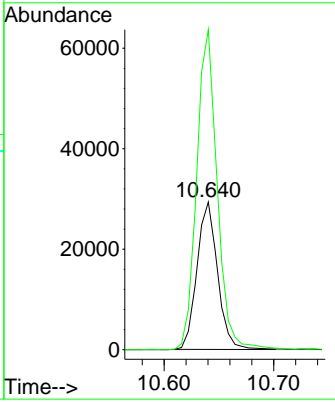


#54
 o-Xylene
 Concen: 11.770 ug/L
 RT: 10.640 min Scan# 1567
 Delta R.T. -0.000 min
 Lab File: VX044738.D
 Acq: 28 Jan 2025 10:15

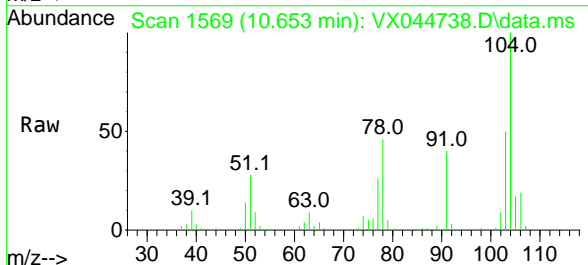
Instrument : MSVOA_X
 ClientSampleId :



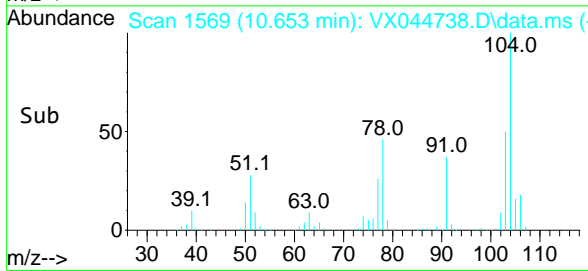
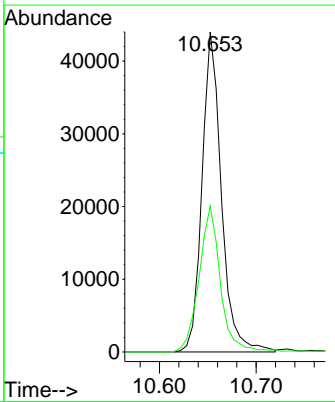
Tgt Ion:106 Resp: 38276
 Ion Ratio Lower Upper
 106 100
 91 216.8 153.2 284.4

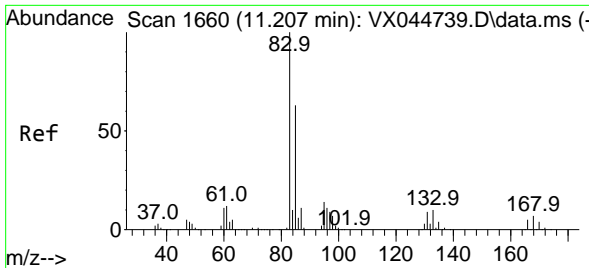


#55
 Styrene
 Concen: 11.584 ug/L
 RT: 10.653 min Scan# 1569
 Delta R.T. -0.000 min
 Lab File: VX044738.D
 Acq: 28 Jan 2025 10:15



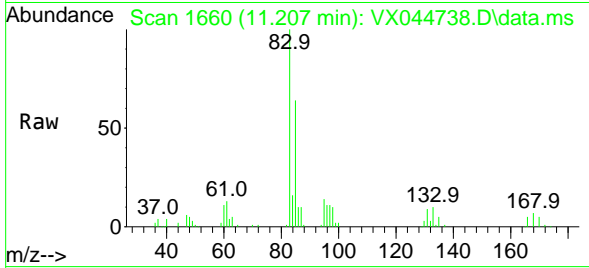
Tgt Ion:104 Resp: 61369
 Ion Ratio Lower Upper
 104 100
 78 45.6 32.7 60.7





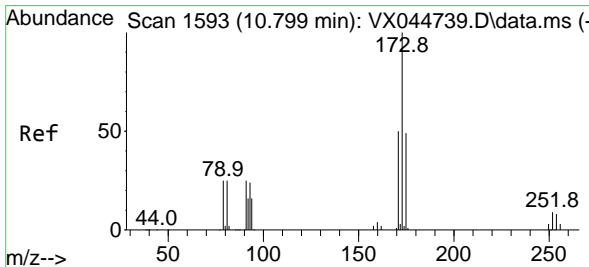
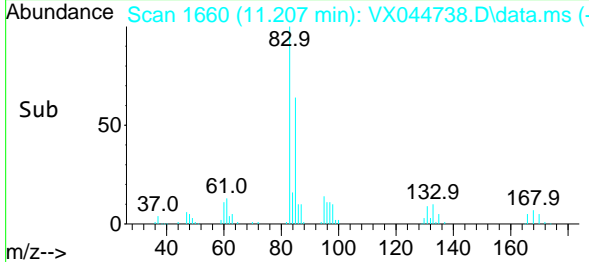
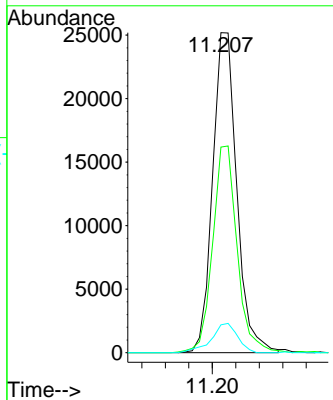
#57
 1,1,2,2-Tetrachloroethane
 Concen: 11.910 ug/L
 RT: 11.207 min Scan# 1660
 Delta R.T. -0.000 min
 Lab File: VX044738.D
 Acq: 28 Jan 2025 10:15

Instrument : MSVOA_X
 ClientSampleId :



Tgt Ion: 83 Resp: 36004

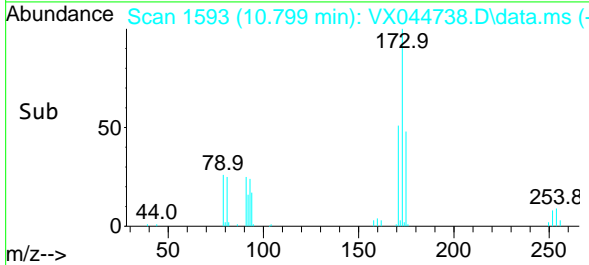
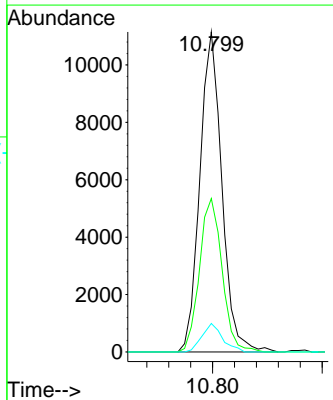
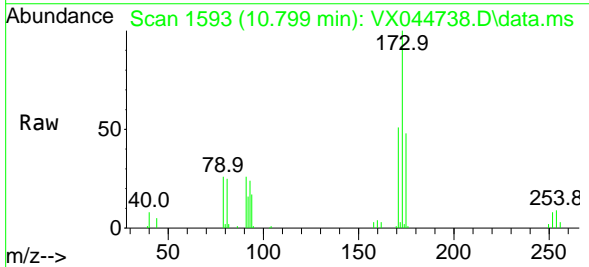
Ion	Ratio	Lower	Upper
83	100		
85	64.3	44.9	83.5
131	8.7	8.0	12.0

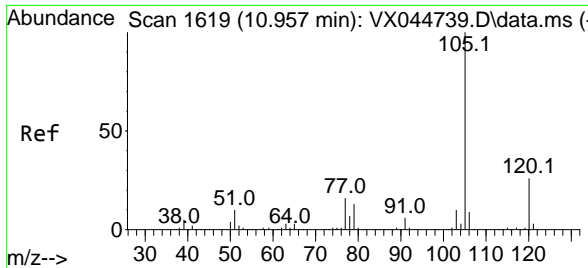


#59
 Bromoform
 Concen: 10.544 ug/L
 RT: 10.799 min Scan# 1593
 Delta R.T. -0.000 min
 Lab File: VX044738.D
 Acq: 28 Jan 2025 10:15

Tgt Ion: 173 Resp: 15546

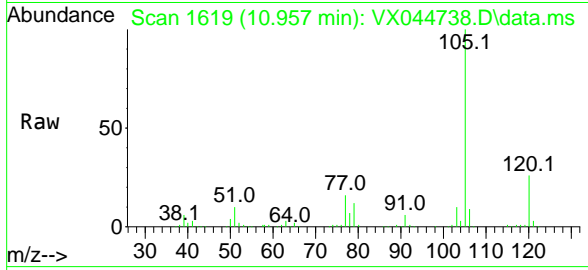
Ion	Ratio	Lower	Upper
173	100		
175	49.2	38.6	58.0
254	8.3	6.6	10.0





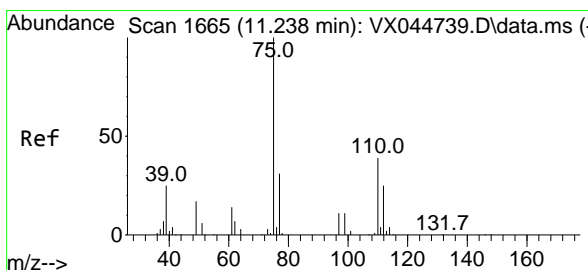
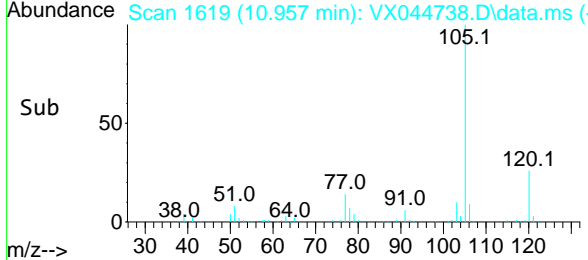
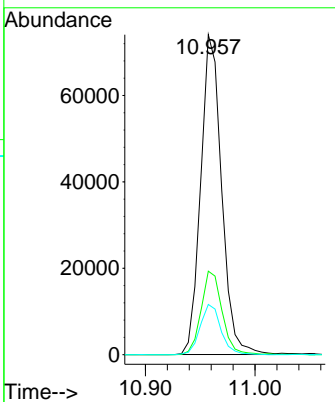
#60
 Isopropylbenzene
 Concen: 11.674 ug/L
 RT: 10.957 min Scan# 1619
 Delta R.T. -0.000 min
 Lab File: VX044738.D
 Acq: 28 Jan 2025 10:15

Instrument : MSVOA_X
 ClientSampleId :

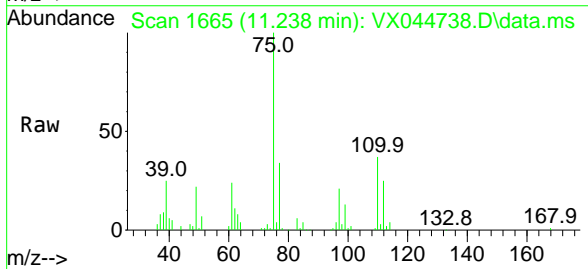


Tgt Ion: 105 Resp: 97811

Ion	Ratio	Lower	Upper
105	100		
120	26.4	20.9	31.3
77	15.7	12.6	19.0

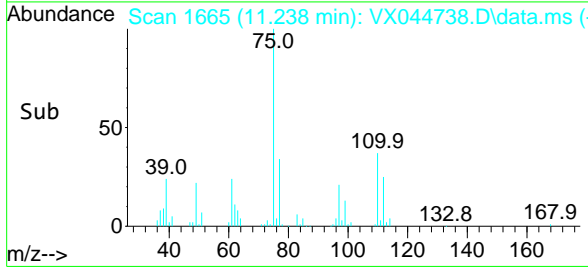
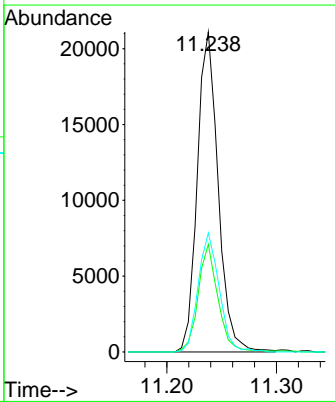


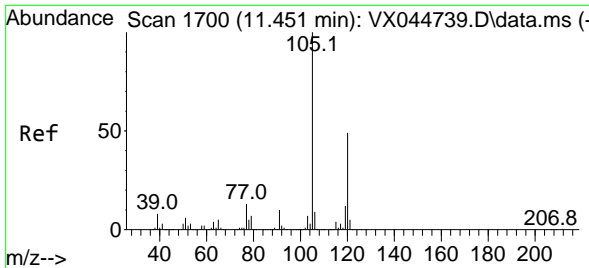
#61
 1,2,3-Trichloropropane
 Concen: 11.988 ug/L
 RT: 11.238 min Scan# 1665
 Delta R.T. -0.000 min
 Lab File: VX044738.D
 Acq: 28 Jan 2025 10:15



Tgt Ion: 75 Resp: 27971

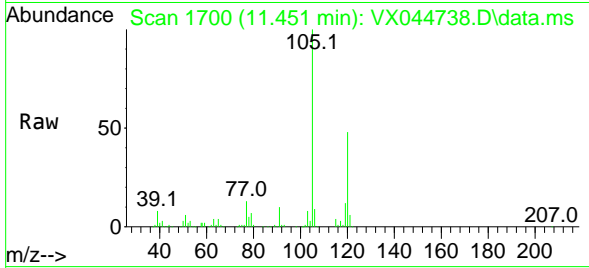
Ion	Ratio	Lower	Upper
75	100		
77	31.8	25.8	38.6
110	37.5	30.8	46.2



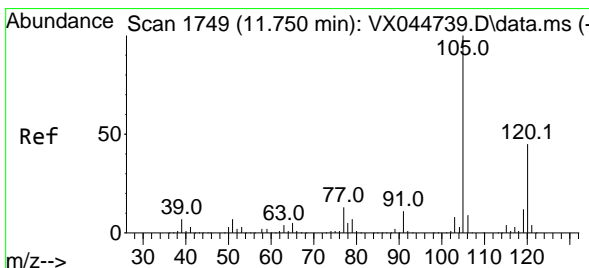
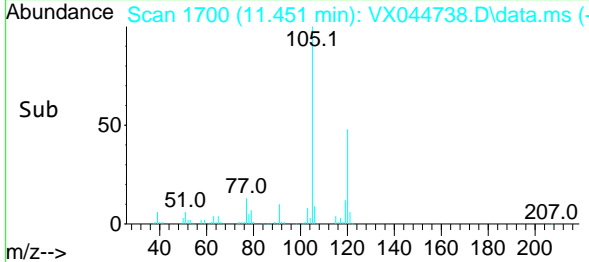
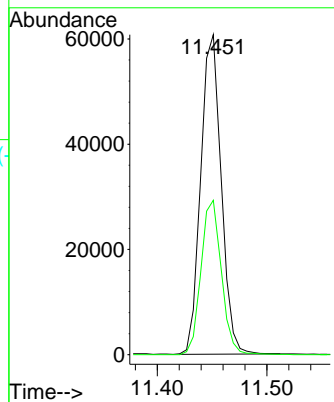


#62
 1,3,5-Trimethylbenzene
 Concen: 11.315 ug/L
 RT: 11.451 min Scan# 1700
 Delta R.T. -0.000 min
 Lab File: VX044738.D
 Acq: 28 Jan 2025 10:15

Instrument : MSVOA_X
 ClientSampleId :

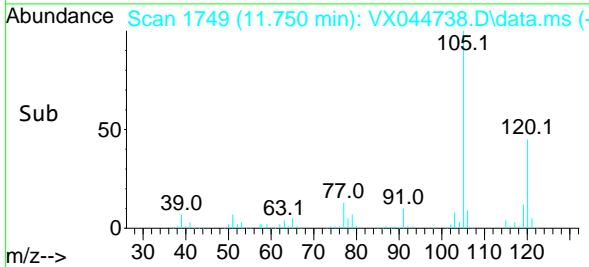
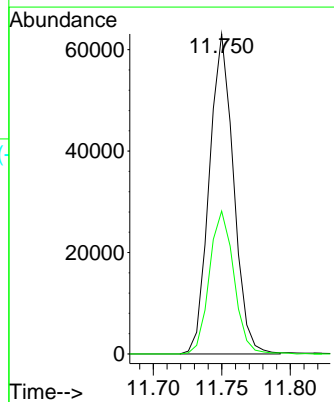
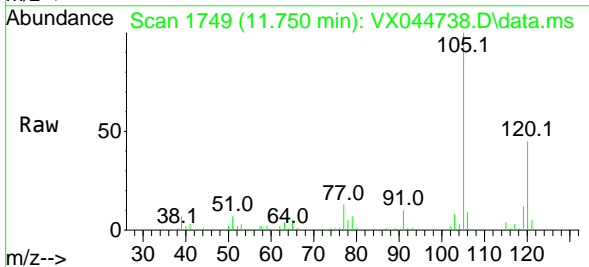


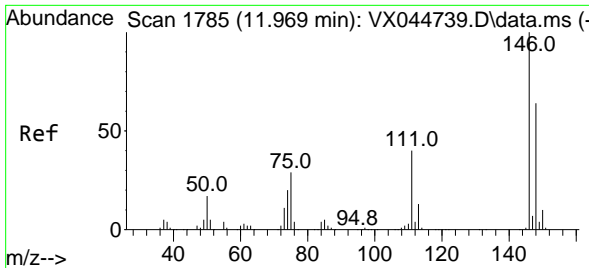
Tgt Ion:105 Resp: 78926
 Ion Ratio Lower Upper
 105 100
 120 48.2 38.3 57.5



#63
 1,2,4-Trimethylbenzene
 Concen: 11.397 ug/L
 RT: 11.750 min Scan# 1749
 Delta R.T. -0.000 min
 Lab File: VX044738.D
 Acq: 28 Jan 2025 10:15

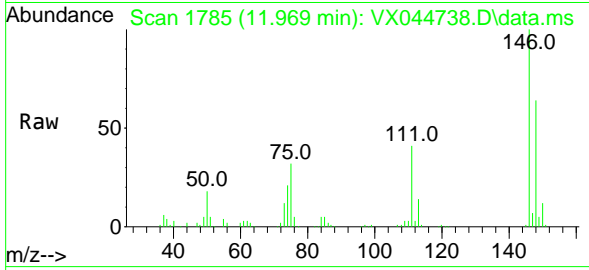
Tgt Ion:105 Resp: 77542
 Ion Ratio Lower Upper
 105 100
 120 45.1 35.7 53.5



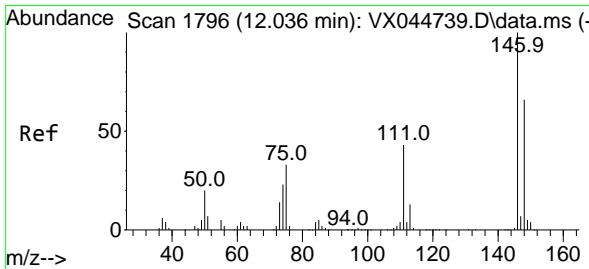
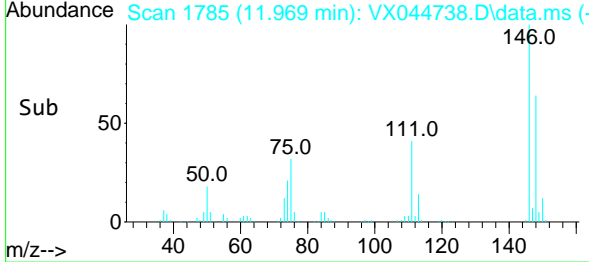
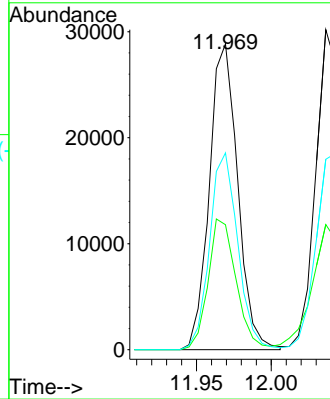


#64
 1,3-Dichlorobenzene
 Concen: 11.241 ug/L
 RT: 11.969 min Scan# 1785
 Delta R.T. -0.000 min
 Lab File: VX044738.D
 Acq: 28 Jan 2025 10:15

Instrument : MSVOA_X
 ClientSampleId :

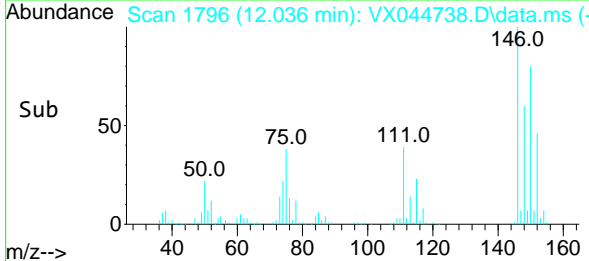
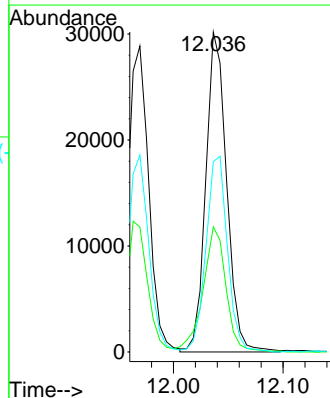
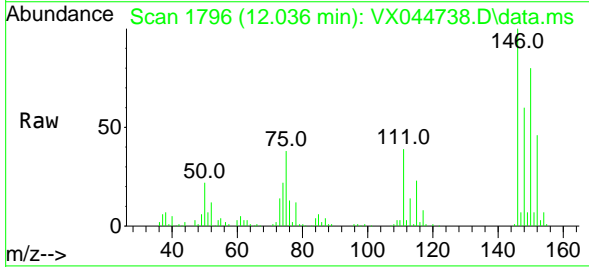


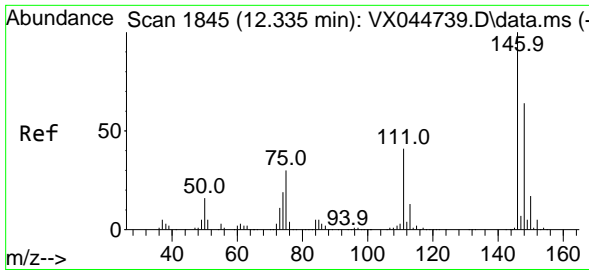
Tgt Ion:146 Resp: 38085
 Ion Ratio Lower Upper
 146 100
 111 40.9 29.5 54.9
 148 64.3 44.4 82.5



#65
 1,4-Dichlorobenzene
 Concen: 11.737 ug/L
 RT: 12.036 min Scan# 1796
 Delta R.T. -0.000 min
 Lab File: VX044738.D
 Acq: 28 Jan 2025 10:15

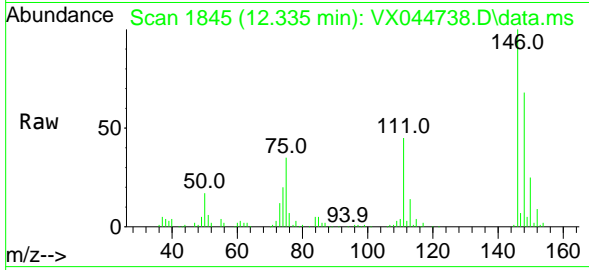
Tgt Ion:146 Resp: 39853
 Ion Ratio Lower Upper
 146 100
 111 39.1 29.7 55.1
 148 59.5 43.5 80.7



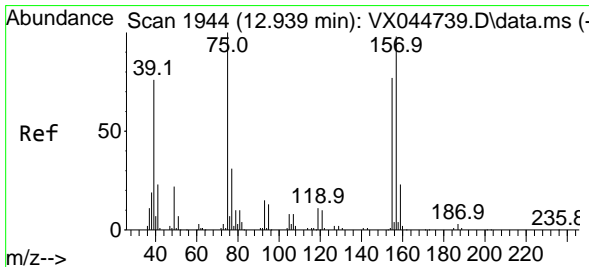
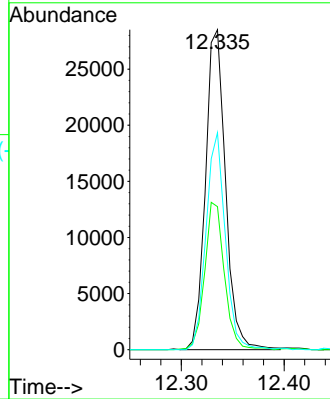
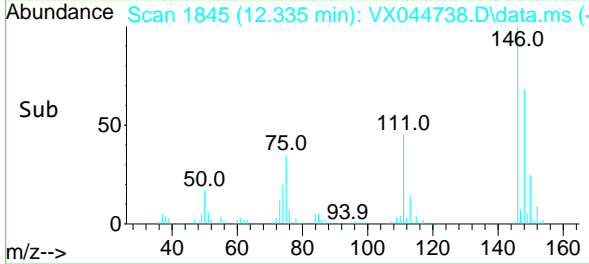


#67
 1,2-Dichlorobenzene
 Concen: 11.411 ug/L
 RT: 12.335 min Scan# 1845
 Delta R.T. -0.000 min
 Lab File: VX044738.D
 Acq: 28 Jan 2025 10:15

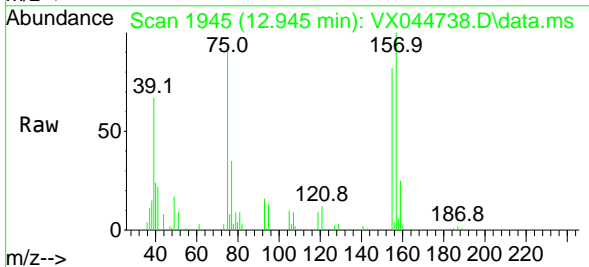
Instrument : MSVOA_X
 ClientSampleId :



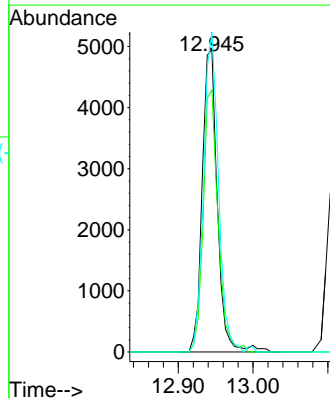
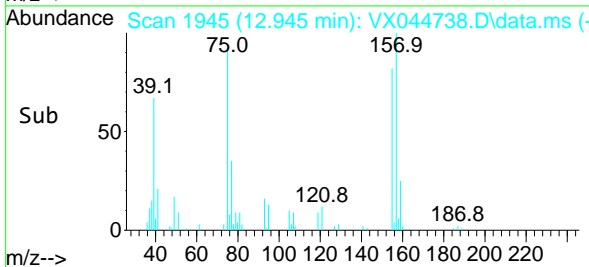
Tgt Ion:146 Resp: 38800
 Ion Ratio Lower Upper
 146 100
 111 44.7 36.1 54.1
 148 67.8 51.5 77.3

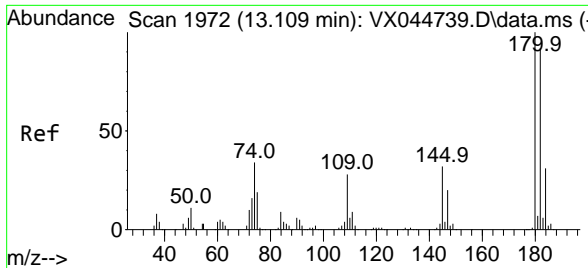


#68
 1,2-Dibromo-3-chloropropane
 Concen: 10.495 ug/L
 RT: 12.945 min Scan# 1945
 Delta R.T. 0.006 min
 Lab File: VX044738.D
 Acq: 28 Jan 2025 10:15



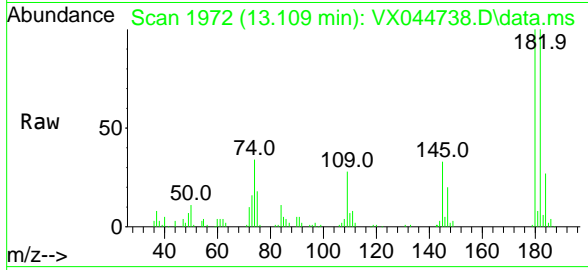
Tgt Ion: 75 Resp: 6942
 Ion Ratio Lower Upper
 75 100
 155 86.7 62.5 93.7
 157 105.9 83.5 125.3



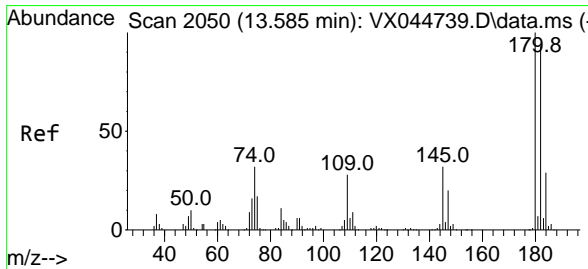
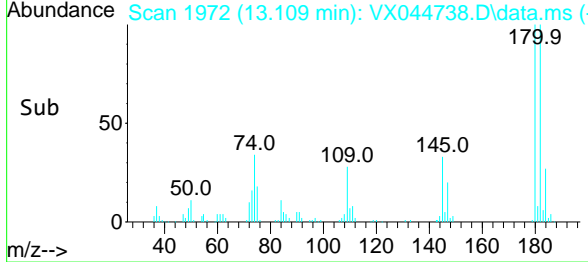
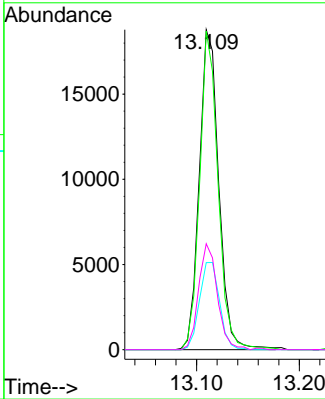


#69
 1,3,5-Trichlorobenzene
 Concen: 11.175 ug/L
 RT: 13.109 min Scan# 1972
 Delta R.T. -0.000 min
 Lab File: VX044738.D
 Acq: 28 Jan 2025 10:15

Instrument : MSVOA_X
 ClientSampleId :

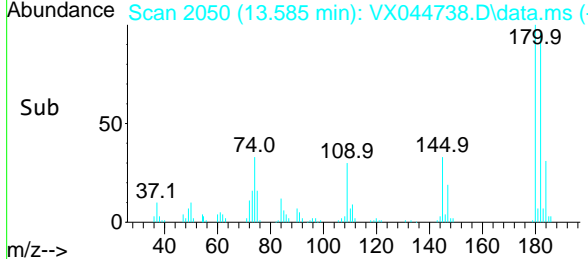
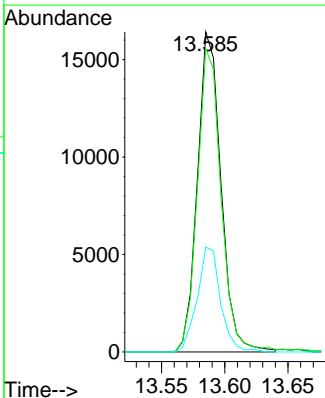
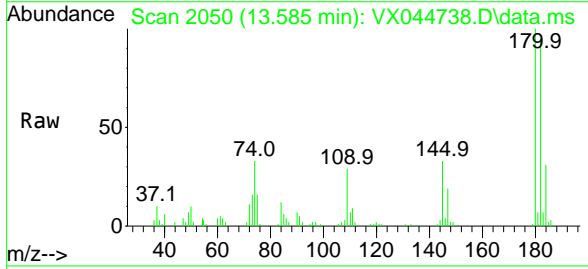


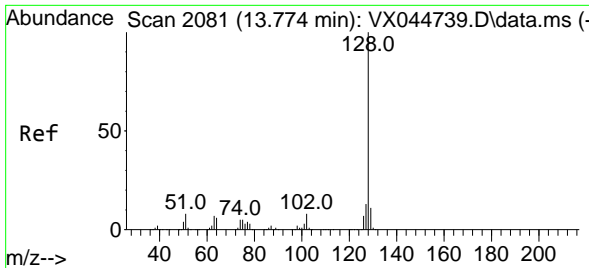
Tgt Ion:180 Resp: 24766
 Ion Ratio Lower Upper
 180 100
 182 94.1 77.0 115.6
 184 28.1 24.0 36.0
 145 31.9 26.2 39.4



#70
 1,2,4-trichlorobenzene
 Concen: 10.683 ug/L
 RT: 13.585 min Scan# 2050
 Delta R.T. -0.000 min
 Lab File: VX044738.D
 Acq: 28 Jan 2025 10:15

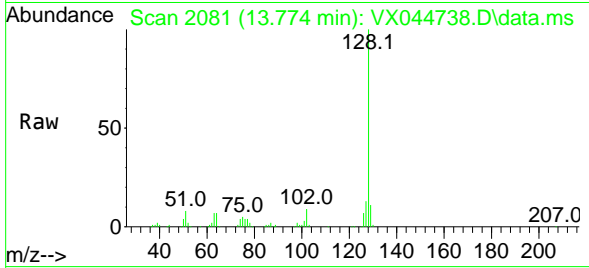
Tgt Ion:180 Resp: 21290
 Ion Ratio Lower Upper
 180 100
 182 95.2 76.5 114.7
 145 32.6 27.0 40.4



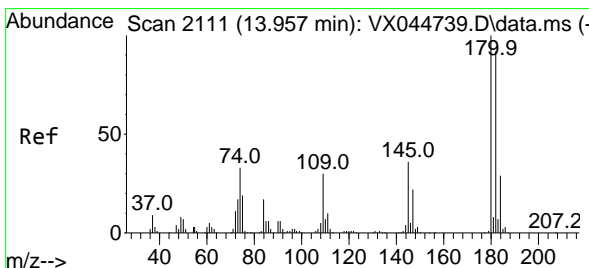
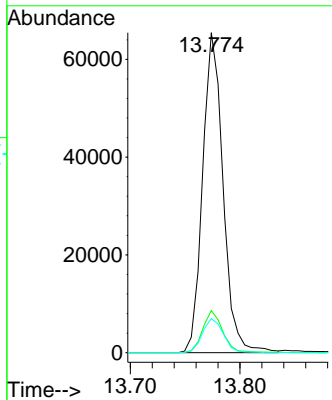
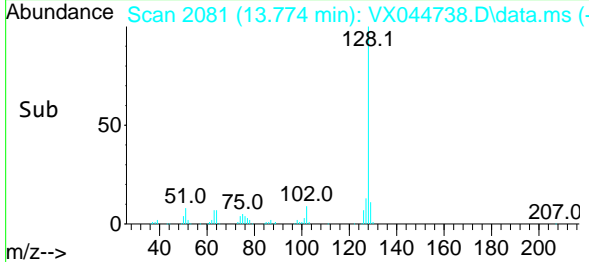


#71
 Naphthalene
 Concen: 11.153 ug/L
 RT: 13.774 min Scan# 2081
 Delta R.T. -0.000 min
 Lab File: VX044738.D
 Acq: 28 Jan 2025 10:15

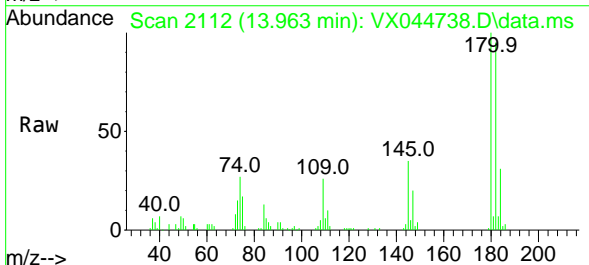
Instrument : MSVOA_X
 ClientSampleId :



Tgt Ion:128 Resp: 84830
 Ion Ratio Lower Upper
 128 100
 127 12.6 10.1 15.1
 129 10.9 8.7 13.1



#72
 1,2,3-Trichlorobenzene
 Concen: 10.888 ug/L
 RT: 13.963 min Scan# 2112
 Delta R.T. 0.006 min
 Lab File: VX044738.D
 Acq: 28 Jan 2025 10:15



Tgt Ion:180 Resp: 22234
 Ion Ratio Lower Upper
 180 100
 182 95.9 77.1 115.7
 145 34.1 28.3 42.5

