

Data Path : Z:\voasrv\HPCHEM1\MSVOA\_X\Data\VX012825\  
 Data File : VX044742.D  
 Acq On : 28 Jan 2025 11:47  
 Operator : JC/MD  
 Sample : VIBLK  
 Misc : 5.0mL/MSVOA\_X/WATER  
 ALS Vial : 8 Sample Multiplier: 1

Instrument :  
 MSVOA\_X  
 ClientSampleId :

Quant Time: Jan 29 07:29:54 2025  
 Quant Method : Z:\voasrv\HPCHEM1\MSVOA\_X\Method\SFAMXML012825WMA.M  
 Quant Title : VOC Analysis  
 QLast Update : Tue Jan 28 12:04:44 2025  
 Response via : Initial Calibration

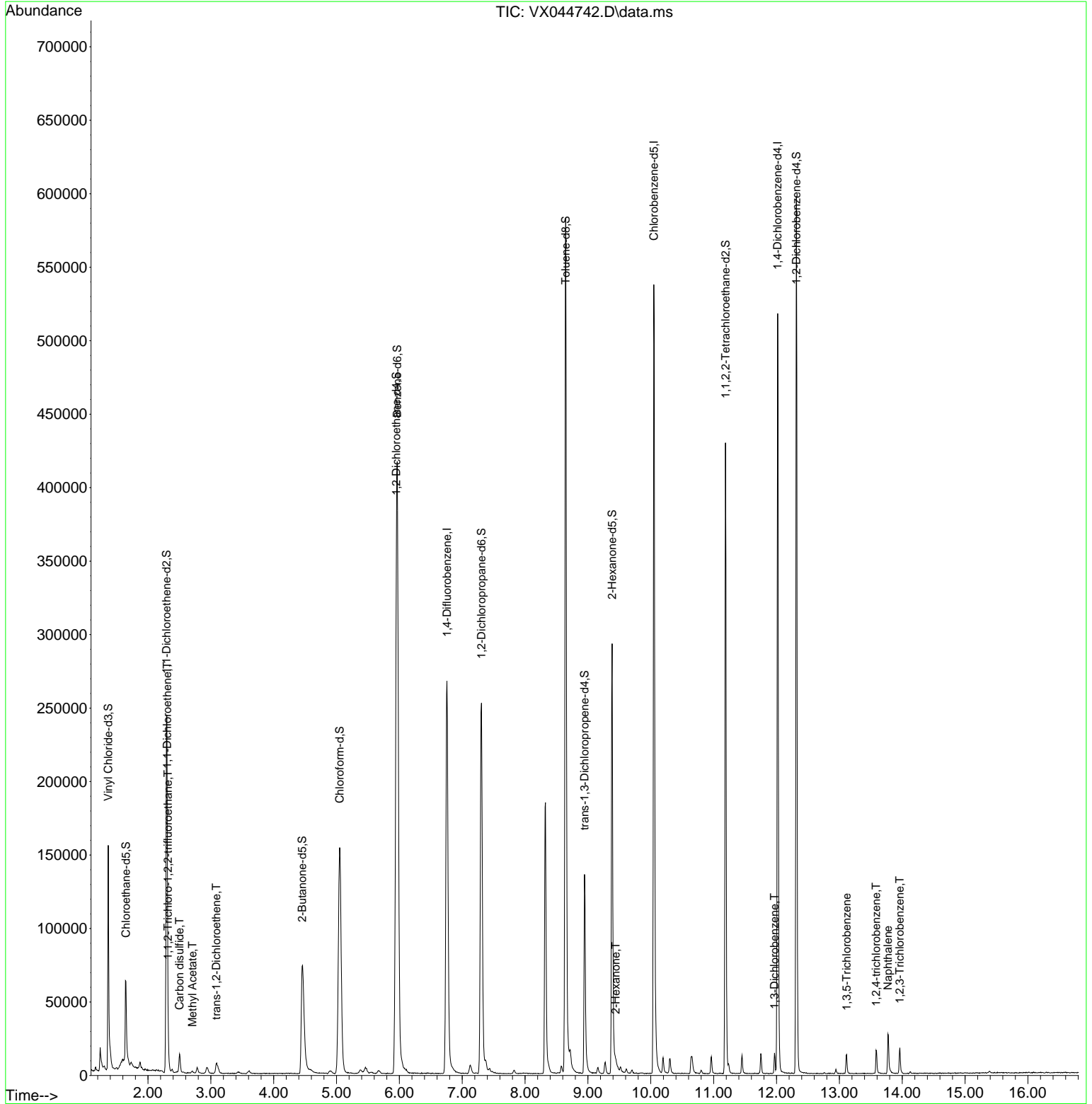
Compound	R.T.	QIon	Response	Conc	Units	Dev(Min)
Internal Standards						
1) 1,4-Difluorobenzene	6.757	114	286351	50.000	ug/L	0.00
28) Chlorobenzene-d5	10.049	117	252220	50.000	ug/L	0.00
58) 1,4-Dichlorobenzene-d4	12.018	152	105603	50.000	ug/L	0.00
System Monitoring Compounds						
4) Vinyl Chloride-d3	1.368	65	109140	50.634	ug/L	0.00
Spiked Amount	50.000	Range 60 - 135	Recovery	=	101.260%	
7) Chloroethane-d5	1.648	69	43841	53.539	ug/L	0.00
Spiked Amount	50.000	Range 70 - 130	Recovery	=	107.080%	
11) 1,1-Dichloroethene-d2	2.294	65	46927	50.933	ug/L	0.00
Spiked Amount	50.000	Range 60 - 125	Recovery	=	101.860%	
21) 2-Butanone-d5	4.452	46	132910	144.236	ug/L	0.00
Spiked Amount	100.000	Range 40 - 130	Recovery	=	144.240%#	
24) Chloroform-d	5.050	84	201190	53.118	ug/L	0.00
Spiked Amount	50.000	Range 70 - 125	Recovery	=	106.240%	
26) 1,2-Dichloroethane-d4	5.952	65	127476	56.071	ug/L	0.00
Spiked Amount	50.000	Range 70 - 125	Recovery	=	112.140%	
32) Benzene-d6	5.964	84	427848	54.252	ug/L	0.00
Spiked Amount	50.000	Range 70 - 125	Recovery	=	108.500%	
36) 1,2-Dichloropropane-d6	7.306	67	136852	54.824	ug/L	0.00
Spiked Amount	50.000	Range 70 - 120	Recovery	=	109.640%	
41) Toluene-d8	8.647	98	384665	55.110	ug/L	0.00
Spiked Amount	50.000	Range 80 - 120	Recovery	=	110.220%	
43) trans-1,3-Dichloroprop...	8.945	79	65276	55.129	ug/L	0.00
Spiked Amount	50.000	Range 60 - 125	Recovery	=	110.260%	
47) 2-Hexanone-d5	9.384	63	86743	117.417	ug/L	0.00
Spiked Amount	100.000	Range 45 - 130	Recovery	=	117.420%	
56) 1,1,2,2-Tetrachloroeth...	11.189	84	175934	56.718	ug/L	0.00
Spiked Amount	50.000	Range 65 - 120	Recovery	=	113.440%	
66) 1,2-Dichlorobenzene-d4	12.317	152	117622	56.924	ug/L	0.00
Spiked Amount	50.000	Range 80 - 120	Recovery	=	113.840%	
Target Compounds						
10) 1,1,2-Trichloro-1,2,2-...	2.319	101	3072	1.615	ug/L #	64
12) 1,1-Dichloroethene	2.306	96	2449	1.380	ug/L #	1
14) Carbon disulfide	2.501	76	15598	2.870	ug/L	98
15) Methyl Acetate	2.709	43	1855	0.872	ug/L	97
17) trans-1,2-Dichloroethene	3.087	96	2725	1.468	ug/L	93
48) 2-Hexanone	9.439	43	6275	2.946	ug/L #	76
64) 1,3-Dichlorobenzene	11.969	146	4658	1.336	ug/L	100
69) 1,3,5-Trichlorobenzene	13.115	180	3450	1.510	ug/L	96
70) 1,2,4-trichlorobenzene	13.585	180	4240	2.059	ug/L	98
71) Naphthalene	13.774	128	20767	2.600	ug/L	98
72) 1,2,3-Trichlorobenzene	13.963	180	4660	2.231	ug/L	92

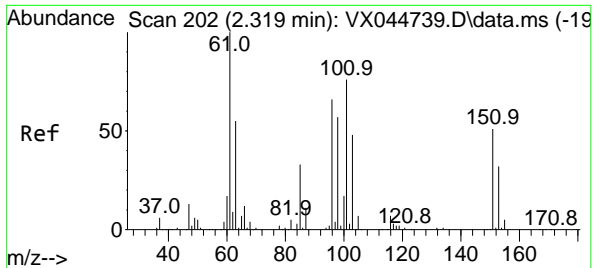
(#) = qualifier out of range (m) = manual integration (+) = signals summed

Data Path : Z:\voasrv\HPCHEM1\MSVOA\_X\Data\VX012825\  
 Data File : VX044742.D  
 Acq On : 28 Jan 2025 11:47  
 Operator : JC/MD  
 Sample : VIBLK  
 Misc : 5.0mL/MSVOA\_X/WATER  
 ALS Vial : 8 Sample Multiplier: 1

Instrument :  
 MSVOA\_X  
 ClientSampleId :

Quant Time: Jan 29 07:29:54 2025  
 Quant Method : Z:\voasrv\HPCHEM1\MSVOA\_X\Method\SFAMXML012825WMA.M  
 Quant Title : VOC Analysis  
 QLast Update : Tue Jan 28 12:04:44 2025  
 Response via : Initial Calibration

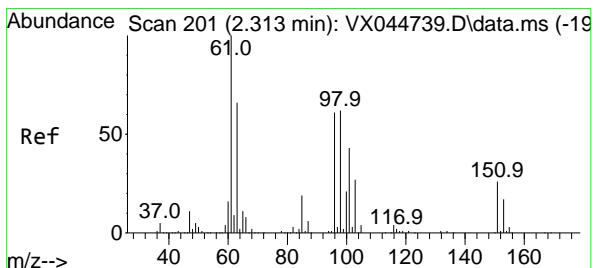
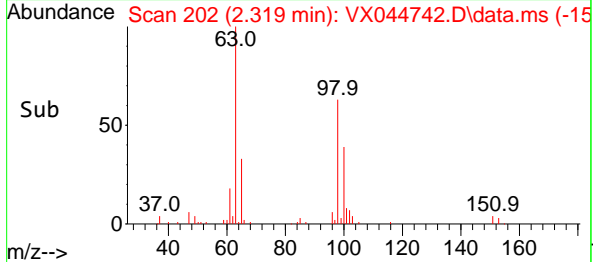
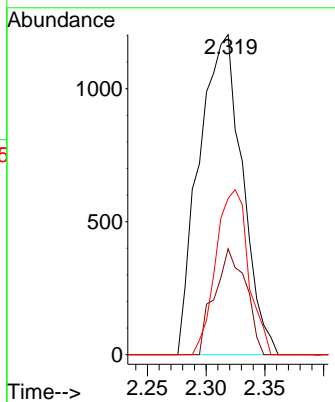
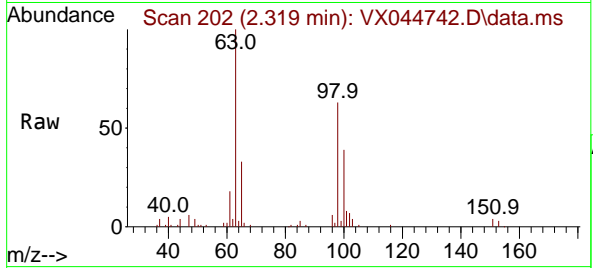




#10  
 1,1,2-Trichloro-1,2,2-trifluoroethane  
 Concen: 1.615 ug/L  
 RT: 2.319 min Scan# 20  
 Delta R.T. -0.000 min  
 Lab File: VX044742.D  
 Acq: 28 Jan 2025 11:47

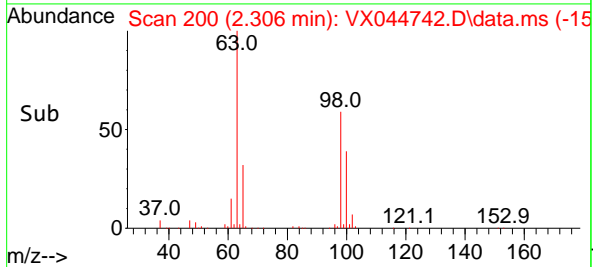
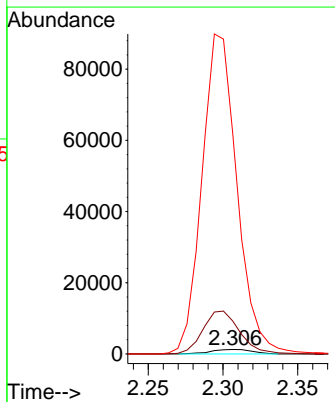
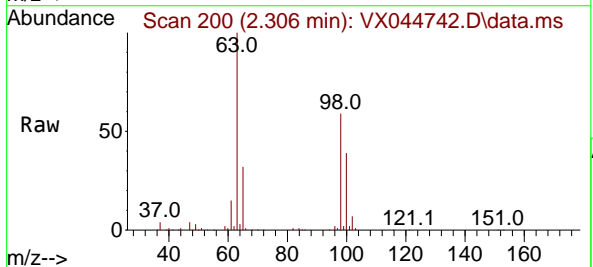
Instrument : MSVOA\_X  
 ClientSampleId :

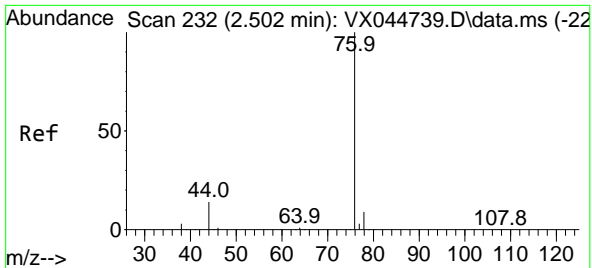
Tgt Ion	Resp	Ion Ratio	Lower	Upper
101	3072	100		
85		24.0	35.4	53.0#
151		39.1	57.0	85.4#



#12  
 1,1-Dichloroethene  
 Concen: 1.380 ug/L  
 RT: 2.306 min Scan# 200  
 Delta R.T. -0.006 min  
 Lab File: VX044742.D  
 Acq: 28 Jan 2025 11:47

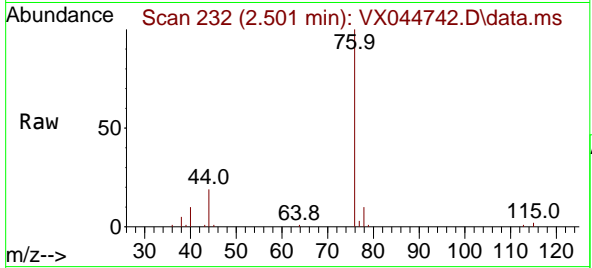
Tgt Ion	Resp	Ion Ratio	Lower	Upper
96	2449	100		
61		746.1	115.1	213.8#
63		5008.0	74.1	137.5#



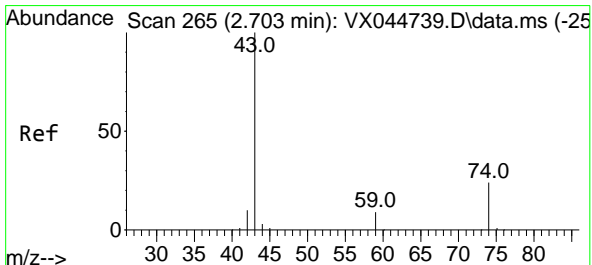
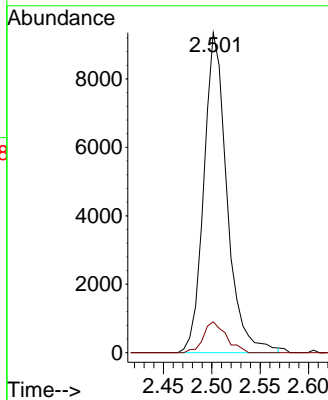
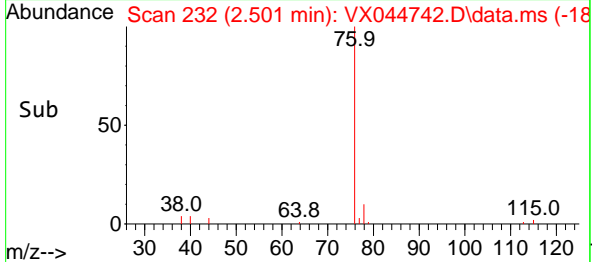


#14  
 Carbon disulfide  
 Concen: 2.870 ug/L  
 RT: 2.501 min Scan# 21  
 Delta R.T. -0.000 min  
 Lab File: VX044742.D  
 Acq: 28 Jan 2025 11:47

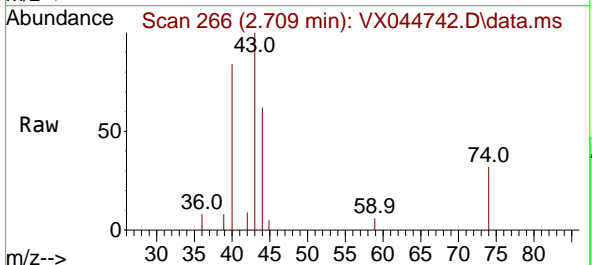
Instrument : MSVOA\_X  
 ClientSampleId :



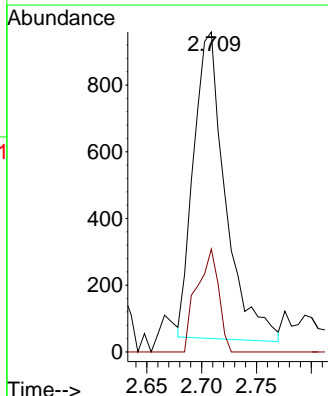
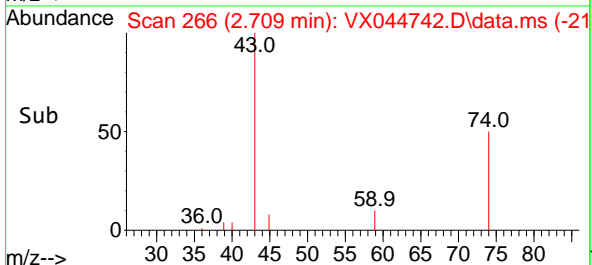
Tgt Ion: 76 Resp: 15598  
 Ion Ratio Lower Upper  
 76 100  
 78 9.7 7.2 10.8

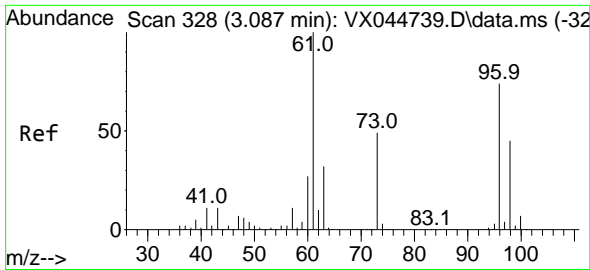


#15  
 Methyl Acetate  
 Concen: 0.872 ug/L  
 RT: 2.709 min Scan# 266  
 Delta R.T. 0.006 min  
 Lab File: VX044742.D  
 Acq: 28 Jan 2025 11:47



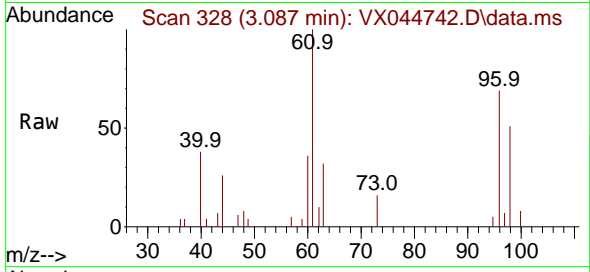
Tgt Ion: 43 Resp: 1855  
 Ion Ratio Lower Upper  
 43 100  
 74 23.0 19.7 29.5





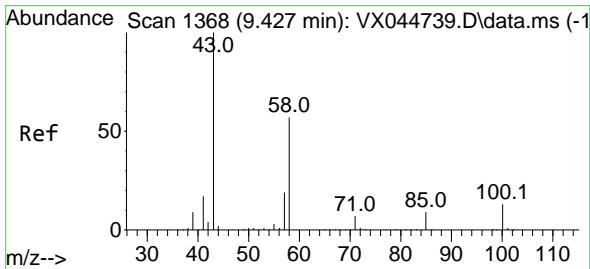
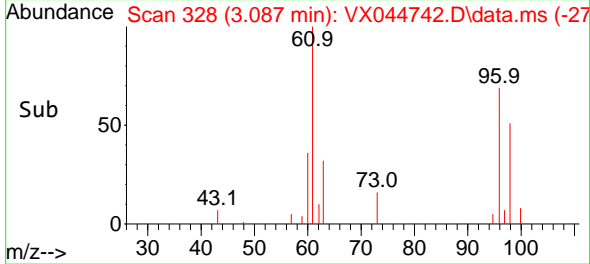
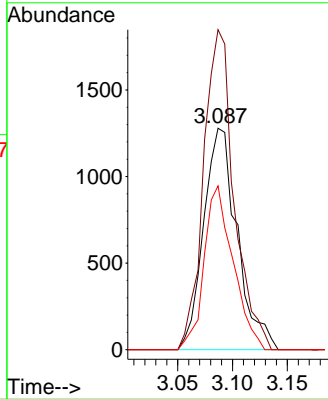
#17  
 trans-1,2-Dichloroethene  
 Concen: 1.468 ug/L  
 RT: 3.087 min Scan# 31  
 Delta R.T. -0.000 min  
 Lab File: VX044742.D  
 Acq: 28 Jan 2025 11:47

Instrument : MSVOA\_X  
 ClientSampleId :



Tgt Ion: 96 Resp: 2725

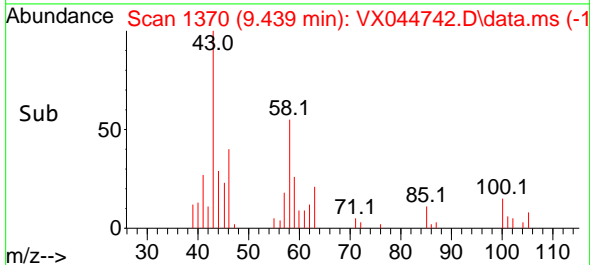
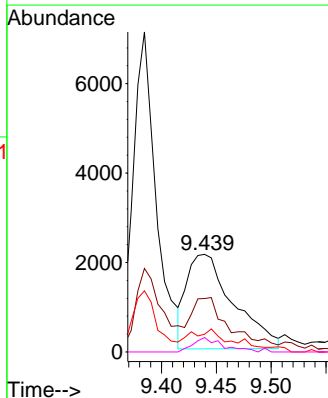
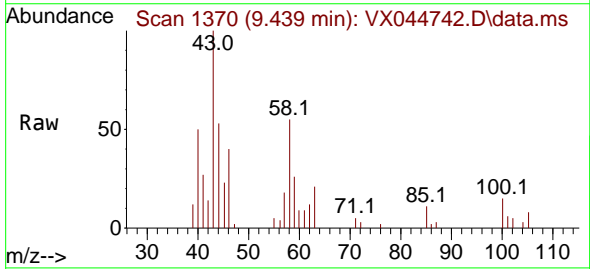
Ion	Ratio	Lower	Upper
96	100		
61	144.5	98.3	182.7
98	74.0	44.1	81.9

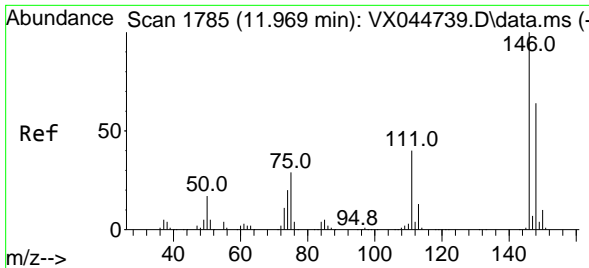


#48  
 2-Hexanone  
 Concen: 2.946 ug/L  
 RT: 9.439 min Scan# 1370  
 Delta R.T. 0.012 min  
 Lab File: VX044742.D  
 Acq: 28 Jan 2025 11:47

Tgt Ion: 43 Resp: 6275

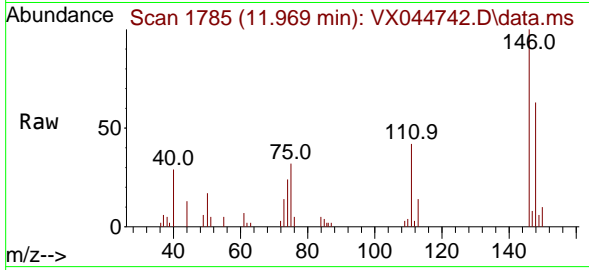
Ion	Ratio	Lower	Upper
43	100		
58	36.7	44.3	66.5#
57	8.8	15.9	23.9#
100	7.7	10.1	15.1#





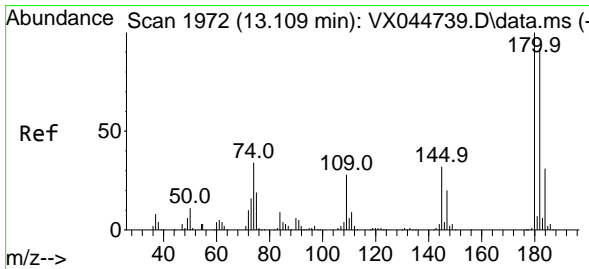
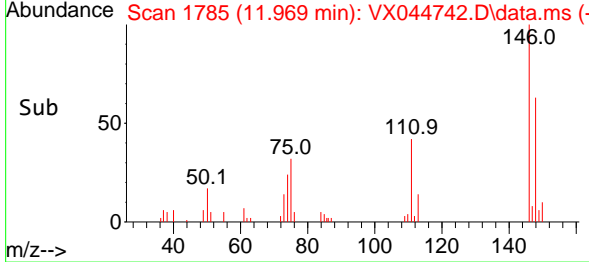
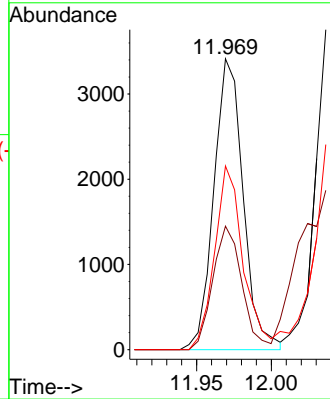
#64  
 1,3-Dichlorobenzene  
 Concen: 1.336 ug/L  
 RT: 11.969 min Scan# 1785  
 Delta R.T. -0.000 min  
 Lab File: VX044742.D  
 Acq: 28 Jan 2025 11:47

Instrument : MSVOA\_X  
 ClientSampleId :

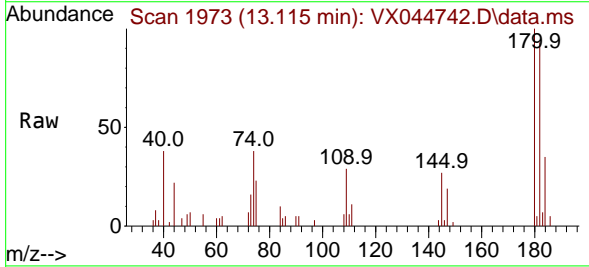


Tgt Ion:146 Resp: 4658

Ion	Ratio	Lower	Upper
146	100		
111	42.5	29.5	54.9
148	63.2	44.4	82.5

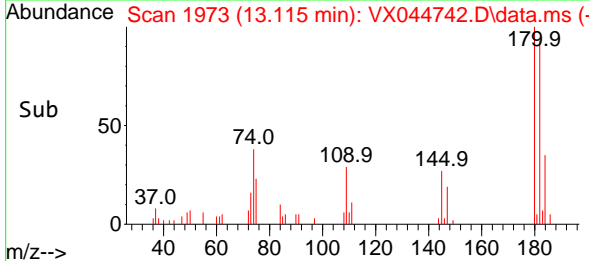
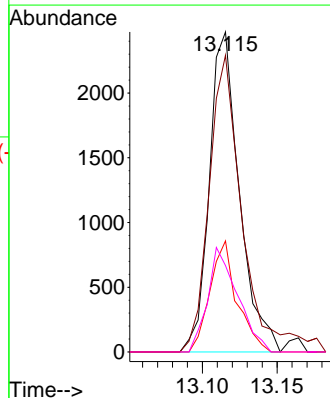


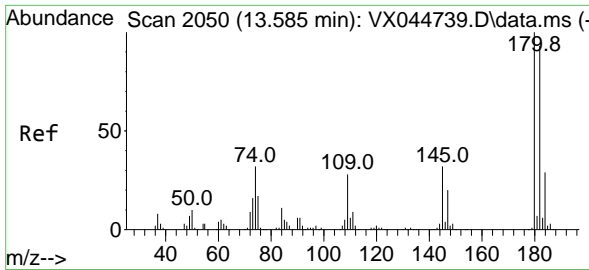
#69  
 1,3,5-Trichlorobenzene  
 Concen: 1.510 ug/L  
 RT: 13.115 min Scan# 1973  
 Delta R.T. 0.006 min  
 Lab File: VX044742.D  
 Acq: 28 Jan 2025 11:47



Tgt Ion:180 Resp: 3450

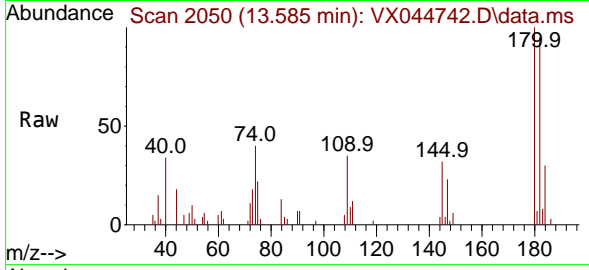
Ion	Ratio	Lower	Upper
180	100		
182	101.2	77.0	115.6
184	31.3	24.0	36.0
145	32.6	26.2	39.4



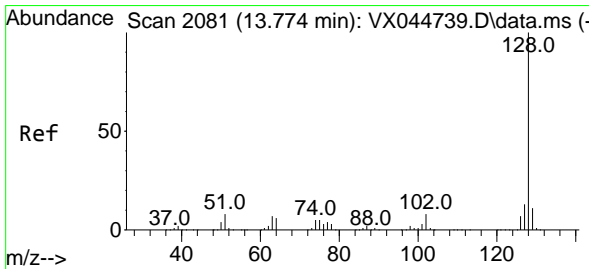
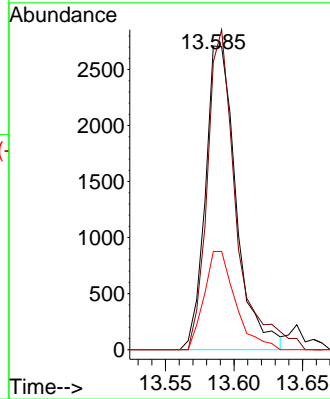
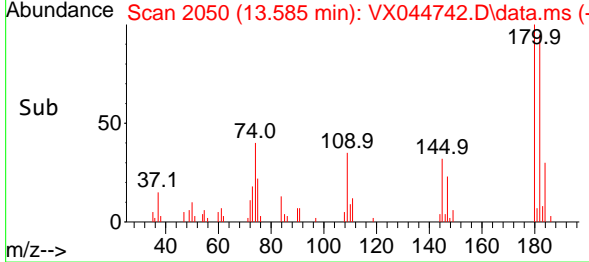


#70  
 1,2,4-trichlorobenzene  
 Concen: 2.059 ug/L  
 RT: 13.585 min Scan# 2050  
 Delta R.T. -0.000 min  
 Lab File: VX044742.D  
 Acq: 28 Jan 2025 11:47

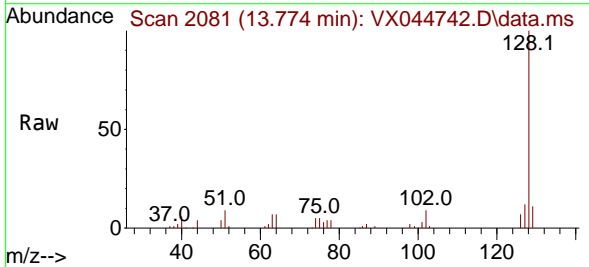
Instrument : MSVOA\_X  
 ClientSampleId :



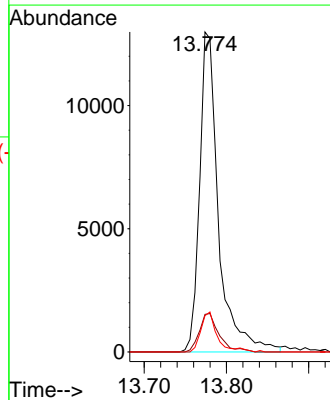
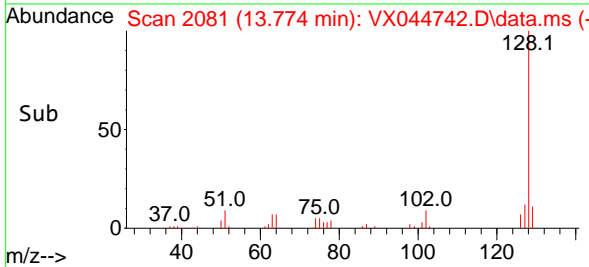
Tgt Ion:180 Resp: 4240  
 Ion Ratio Lower Upper  
 180 100  
 182 98.0 76.5 114.7  
 145 32.9 27.0 40.4

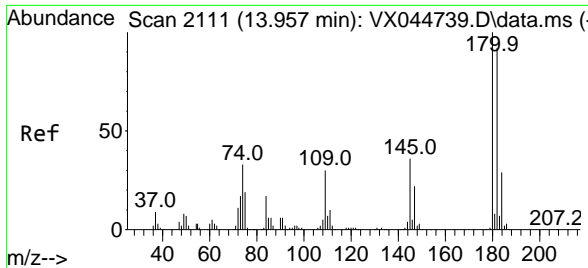


#71  
 Naphthalene  
 Concen: 2.600 ug/L  
 RT: 13.774 min Scan# 2081  
 Delta R.T. -0.000 min  
 Lab File: VX044742.D  
 Acq: 28 Jan 2025 11:47



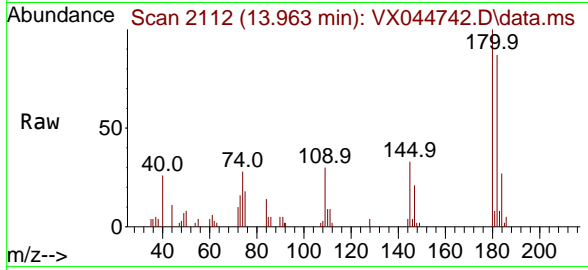
Tgt Ion:128 Resp: 20767  
 Ion Ratio Lower Upper  
 128 100  
 127 12.0 10.1 15.1  
 129 10.2 8.7 13.1





#72  
 1,2,3-Trichlorobenzene  
 Concen: 2.231 ug/L  
 RT: 13.963 min Scan# 21  
 Delta R.T. 0.006 min  
 Lab File: VX044742.D  
 Acq: 28 Jan 2025 11:47

Instrument :  
 MSVOA\_X  
 ClientSampleId :



Tgt Ion:180 Resp: 4660

Ion	Ratio	Lower	Upper
180	100		
182	86.4	77.1	115.7
145	34.7	28.3	42.5

