

Data Path : Z:\VOASRV\HPCHEM1\MSVOA X\DATA\VX012919\  
 Data File : VX007286.D  
 Acq On : 29 Jan 2019 14:22  
 Operator : JC/SP  
 Sample : K1262-01 5X  
 Misc : 5.0mL/MSVOA X/WATER  
 ALS Vial : 12 Sample Multiplier: 1

Quant Time: Jan 30 00:55:56 2019  
 Quant Method : Z:\VOASRV\HPCHEM1\MSVOA X\METHOD\624X012519W.M  
 Quant Title : METHOD 624 VOLATILE ORGANIC ANALYSIS  
 QLast Update : Mon Jan 28 10:35:22 2019  
 Response via : Initial Calibration

Internal Standards	R.T.	QIon	Response	Conc	Units	Dev(Min)
1) Bromochloromethane	5.02	128	77588	30.00	ug/l	0.00
28) 1,4-Difluorobenzene	6.86	114	409354	30.00	ug/l	0.00
57) Chlorobenzene-d5	10.11	117	369953	30.00	ug/l	0.00

System Monitoring Compounds

27) 1,2-Dichloroethane-d4	6.07	65	158633	31.15	ug/l	0.00
Spiked Amount	30.000	Range	50 - 169	Recovery	=	103.83%
60) 4-Bromofluorobenzene	11.13	95	165048	28.91	ug/l	0.00
Spiked Amount	30.000	Range	56 - 143	Recovery	=	96.37%
63) Toluene-d8	8.71	98	485483	29.11	ug/l	0.00
Spiked Amount	30.000	Range	66 - 137	Recovery	=	97.03%

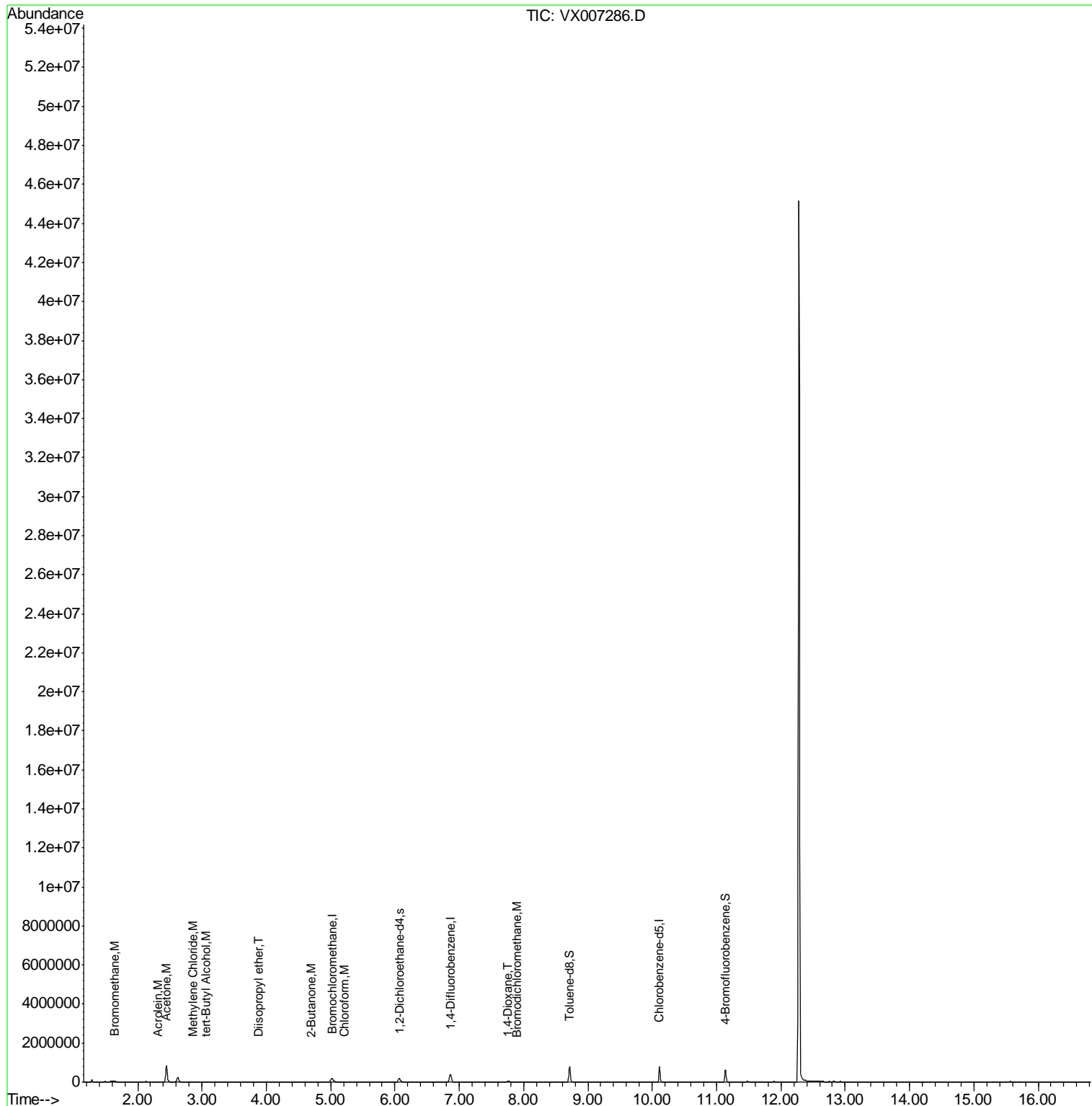
Target Compounds

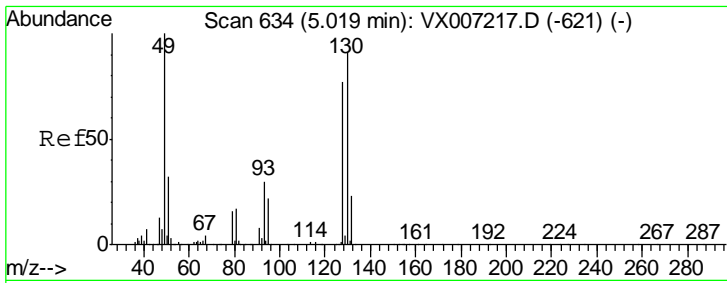
					Ovalue
5) Bromomethane	1.64	94	1724	0.374	ug/l 96
13) Acrolein	2.32	56	141	0.286	ug/l 93
15) Acetone	2.45	58	270656	372.940	ug/l 95
18) Methylene Chloride	2.85	84	2531	0.548	ug/l # 75
20) Diisopropyl ether	3.87	45	8464	0.653	ug/l # 85
23) tert-Butyl Alcohol	3.07	59	480	0.447	ug/l # 75
25) Chloroform	5.21	83	19818	2.590	ug/l 100
30) 2-Butanone	4.70	43	4799	1.505	ug/l # 69
41) Bromodichloromethane	7.90	83	1285	0.246	ug/l # 73
45) 1,4-Dioxane	7.75	88	61	0.542	ug/l # 1

(#) = qualifier out of range (m) = manual integration (+) = signals summed

Data Path : Z:\VOASRV\HPCHEM1\MSVOA X\DATA\VX012919\  
 Data File : VX007286.D  
 Acq On : 29 Jan 2019 14:22  
 Operator : JC/SP  
 Sample : K1262-01 5X  
 Misc : 5.0mL/MSVOA X/WATER  
 ALS Vial : 12 Sample Multiplier: 1

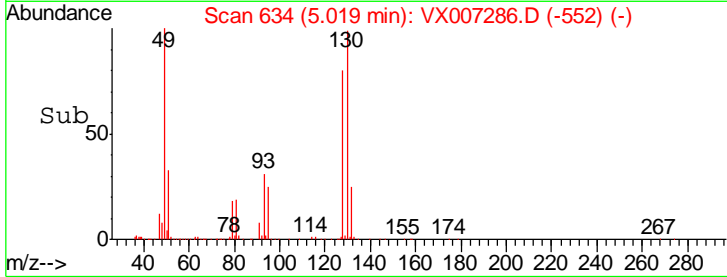
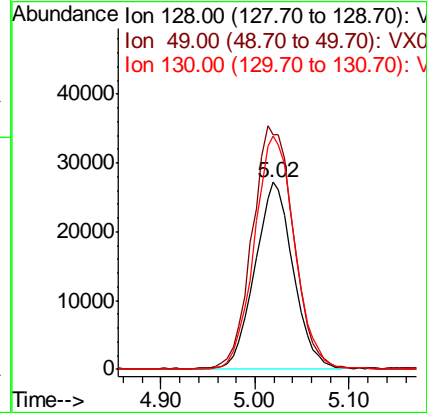
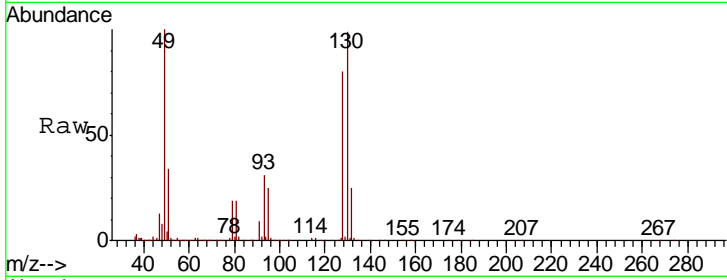
Quant Time: Jan 30 00:55:56 2019  
 Quant Method : Z:\VOASRV\HPCHEM1\MSVOA X\METHOD\624X012519W.M  
 Quant Title : METHOD 624 VOLATILE ORGANIC ANALYSIS  
 QLast Update : Mon Jan 28 10:35:22 2019  
 Response via : Initial Calibration





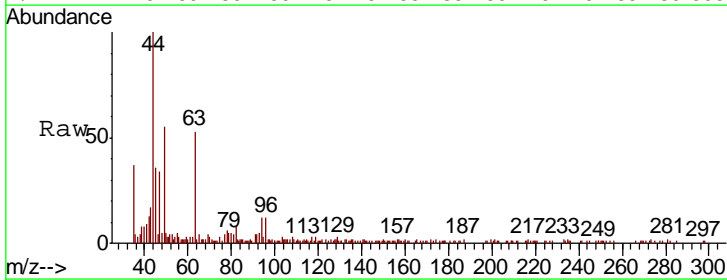
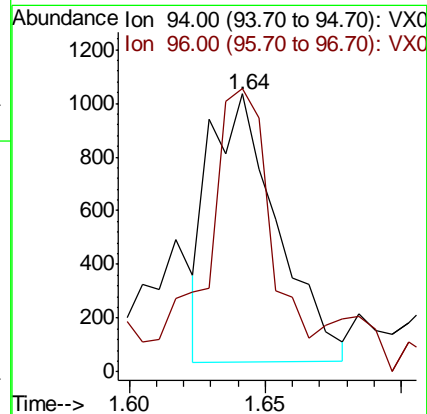
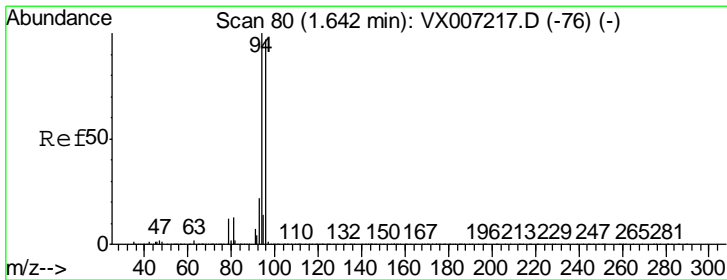
#1  
 Bromochloromethane  
 Concen: 30.000 ug/l  
 RT: 5.02 min Scan# 634  
 Delta R.T. -0.00 min  
 Lab File: VX007286.D  
 Acq: 29 Jan 2019 14:22

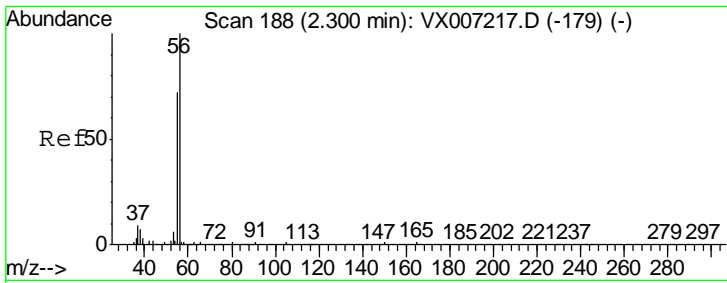
Tgt Ion	Resp	Lower	Upper
128	77588		
49	138.5	0.0	345.5
130	131.3	0.0	320.0



#5  
 Bromomethane  
 Concen: 0.374 ug/l  
 RT: 1.64 min Scan# 80  
 Delta R.T. -0.00 min  
 Lab File: VX007286.D  
 Acq: 29 Jan 2019 14:22

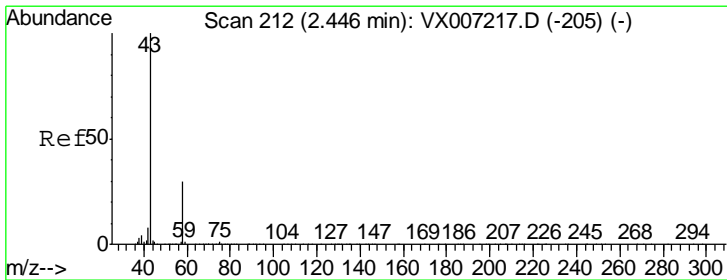
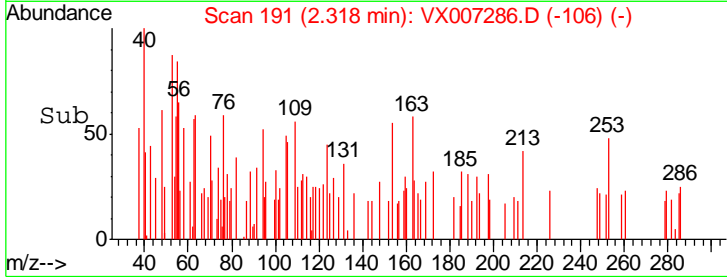
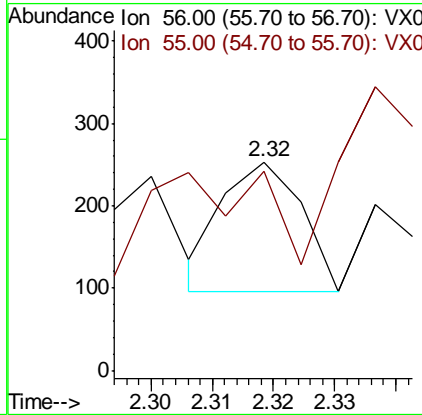
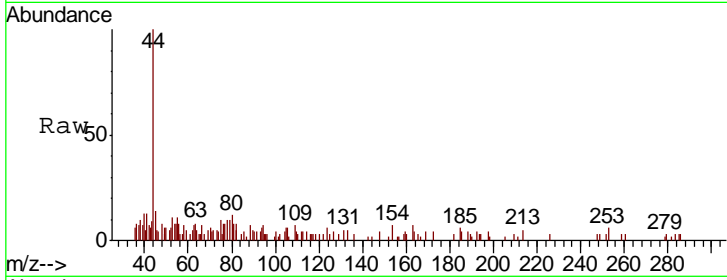
Tgt Ion	Resp	Lower	Upper
94	1724		
96	92.6	77.4	116.2





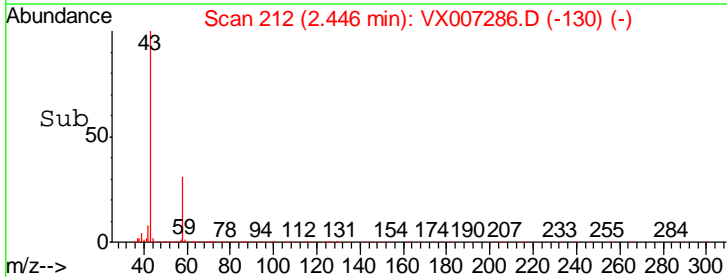
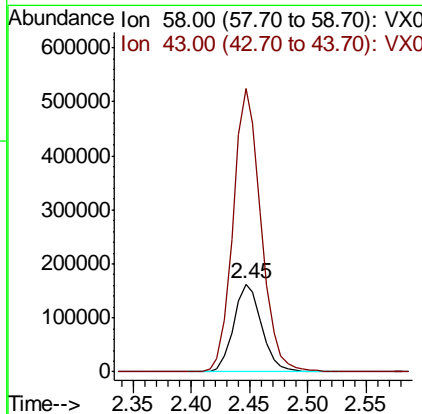
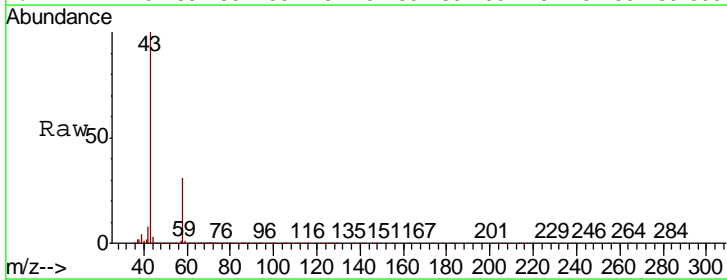
#13  
 Acrolein  
 Concen: 0.286 ug/l  
 RT: 2.32 min Scan# 191  
 Delta R.T. 0.02 min  
 Lab File: VX007286.D  
 Acq: 29 Jan 2019 14:22

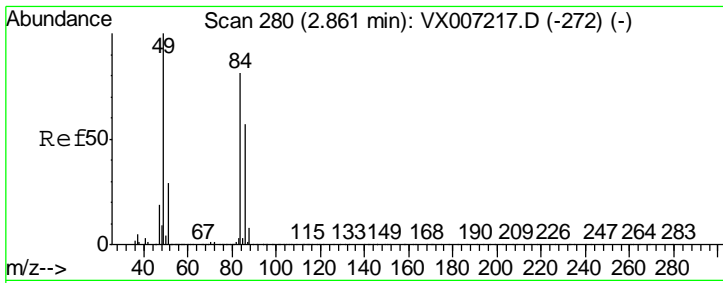
Tgt Ion	Resp	Lower	Upper
56	141		
55	79.4	58.6	87.8



#15  
 Acetone  
 Concen: 372.940 ug/l  
 RT: 2.45 min Scan# 212  
 Delta R.T. -0.00 min  
 Lab File: VX007286.D  
 Acq: 29 Jan 2019 14:22

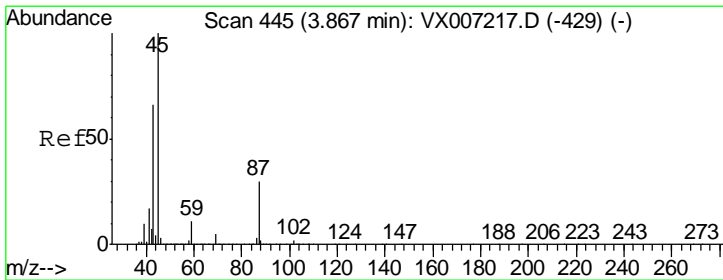
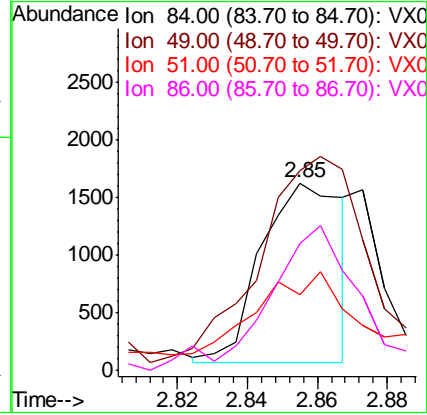
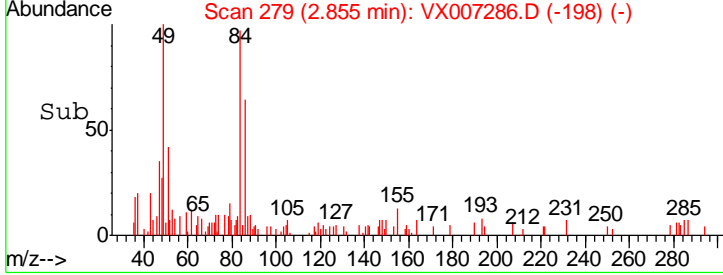
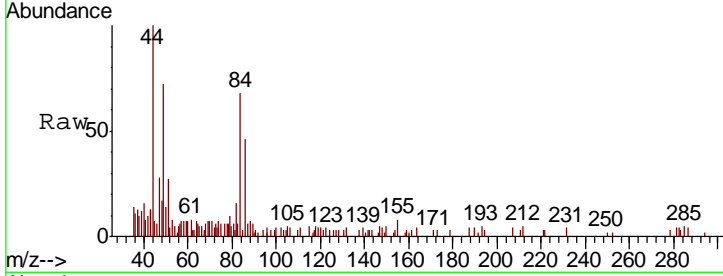
Tgt Ion	Resp	Lower	Upper
58	270656		
43	322.8	265.9	398.9





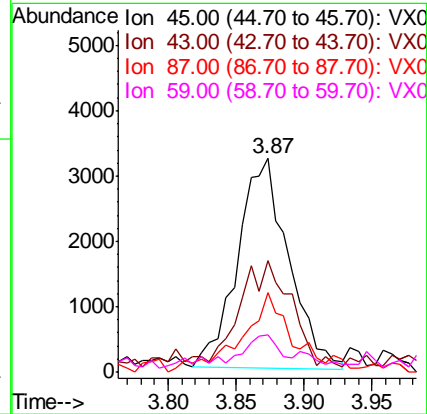
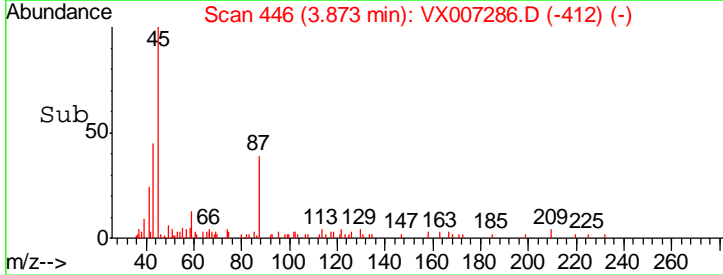
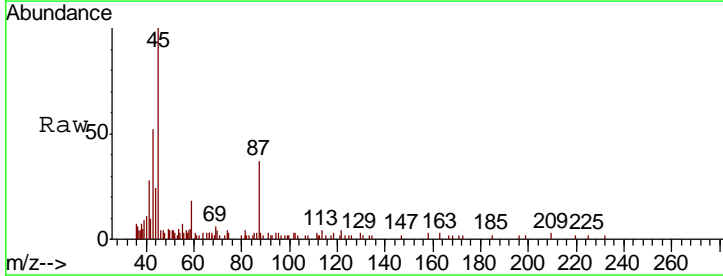
#18  
 Methylene Chloride  
 Concen: 0.548 ug/l  
 RT: 2.85 min Scan# 279  
 Delta R.T. -0.01 min  
 Lab File: VX007286.D  
 Acq: 29 Jan 2019 14:22

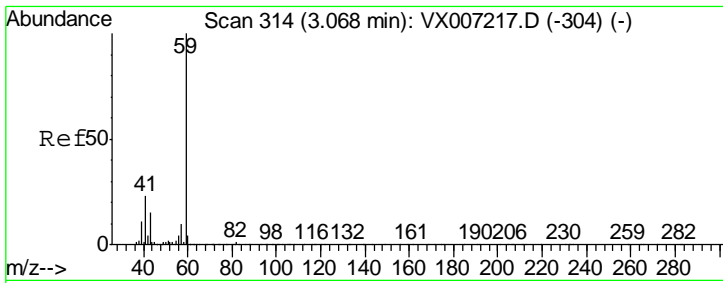
Tgt Ion	Resp	Lower	Upper
84	2531		
49	89.4	98.4	147.6#
51	19.7	28.9	43.3#
86	58.2	56.1	84.1



#20  
 Diisopropyl ether  
 Concen: 0.653 ug/l  
 RT: 3.87 min Scan# 446  
 Delta R.T. 0.01 min  
 Lab File: VX007286.D  
 Acq: 29 Jan 2019 14:22

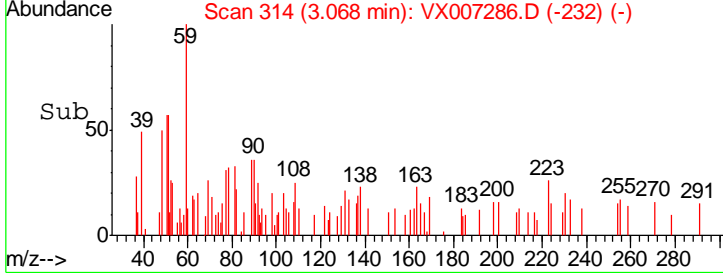
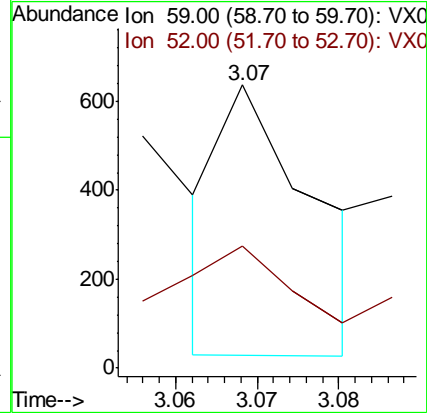
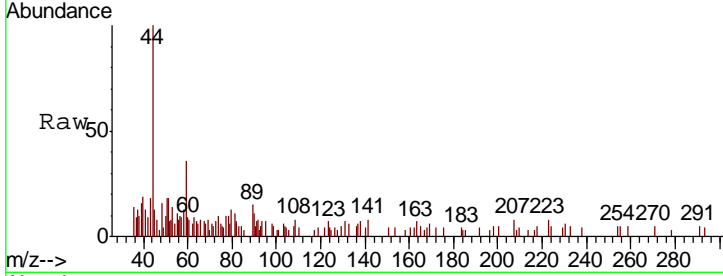
Tgt Ion	Resp	Lower	Upper
45	8464		
43	51.0	53.1	79.7#
87	34.0	23.7	35.5
59	14.3	9.0	13.4#





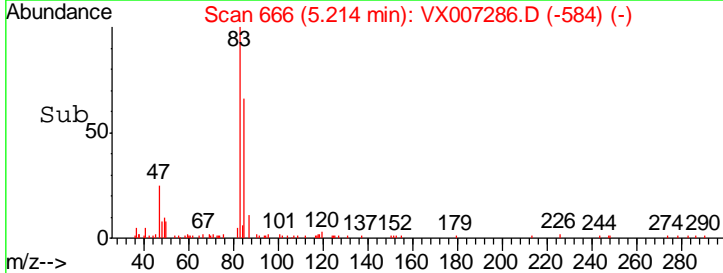
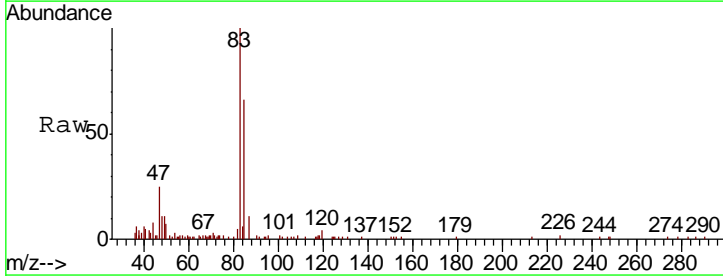
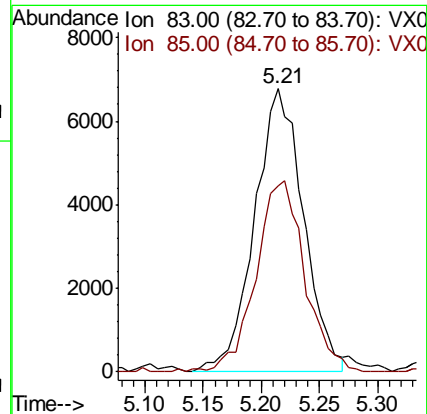
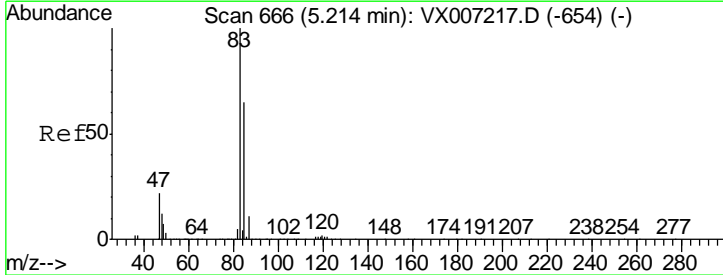
#23  
 tert-Butyl Alcohol  
 Concen: 0.447 ug/l  
 RT: 3.07 min Scan# 314  
 Delta R.T. -0.00 min  
 Lab File: VX007286.D  
 Acq: 29 Jan 2019 14:22

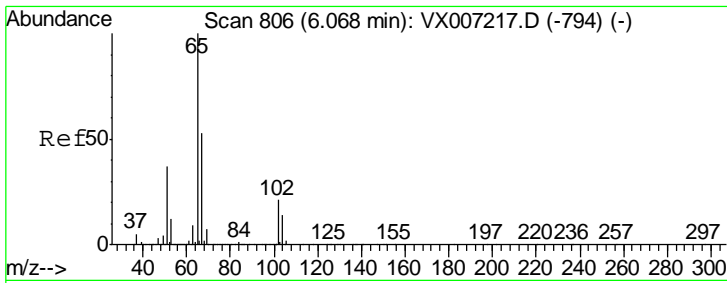
Tgt Ion	Resp	Lower	Upper
59	480		
59	100		
52	32.3	0.2	0.2#



#25  
 Chloroform  
 Concen: 2.590 ug/l  
 RT: 5.21 min Scan# 666  
 Delta R.T. -0.00 min  
 Lab File: VX007286.D  
 Acq: 29 Jan 2019 14:22

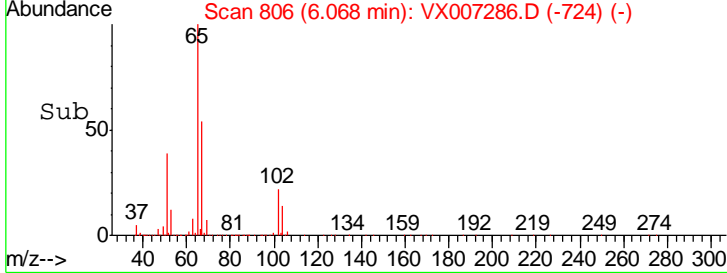
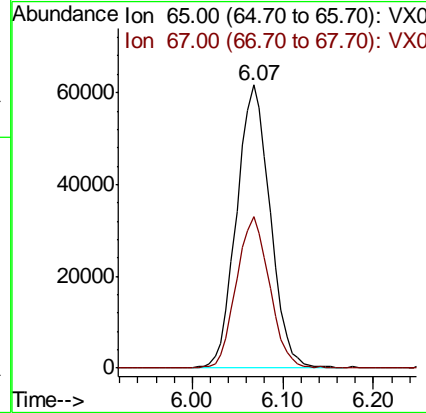
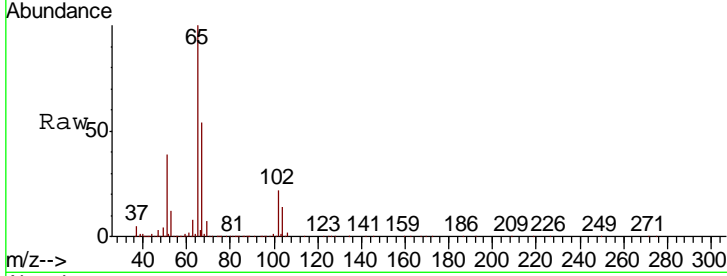
Tgt Ion	Resp	Lower	Upper
83	19818		
83	100		
85	65.1	51.9	77.9





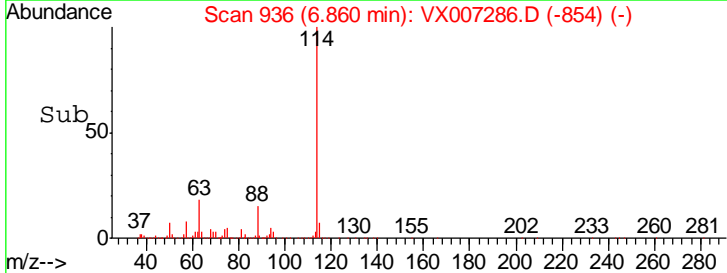
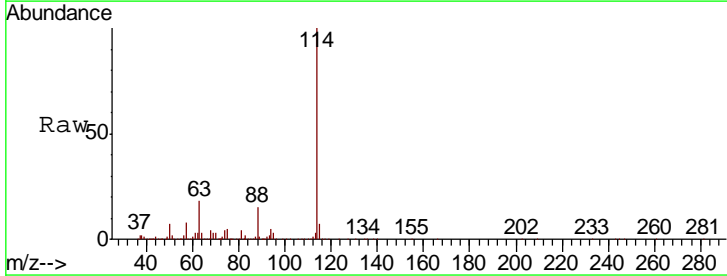
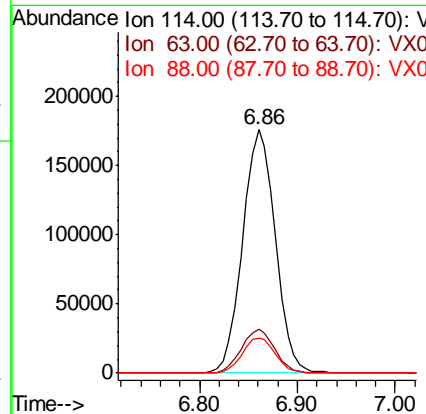
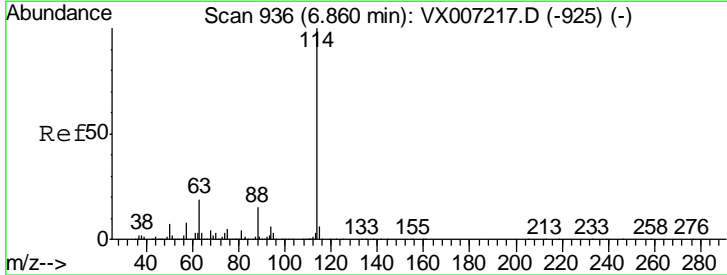
#27  
 1,2-Dichloroethane-d4  
 Concen: 31.147 ug/l  
 RT: 6.07 min Scan# 806  
 Delta R.T. 0.00 min  
 Lab File: VX007286.D  
 Acq: 29 Jan 2019 14:22

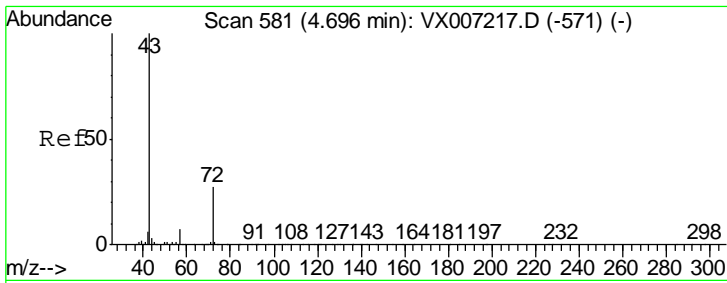
Tgt Ion	Resp	Lower	Upper
65	158633		
67	52.8	42.0	63.0



#28  
 1,4-Difluorobenzene  
 Concen: 30.000 ug/l  
 RT: 6.86 min Scan# 936  
 Delta R.T. -0.00 min  
 Lab File: VX007286.D  
 Acq: 29 Jan 2019 14:22

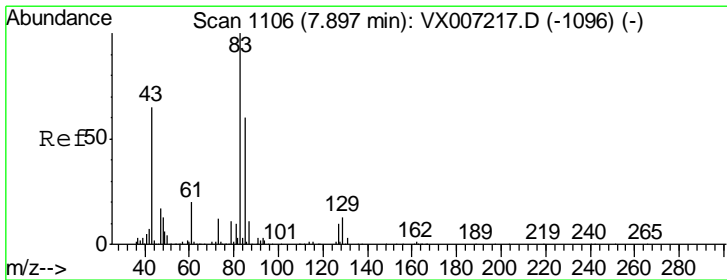
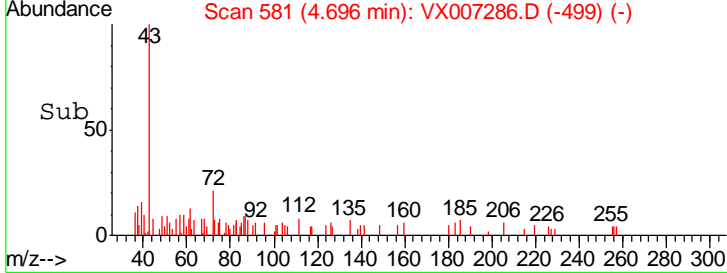
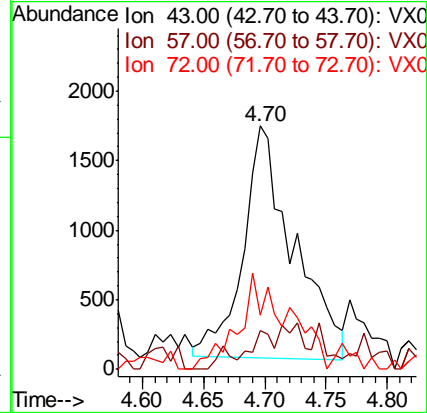
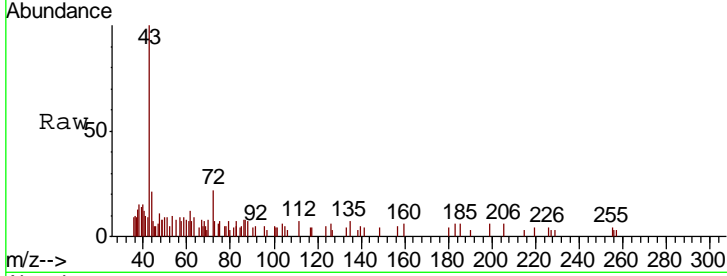
Tgt Ion	Resp	Lower	Upper
114	409354		
63	18.2	14.6	21.8
88	14.6	11.8	17.6





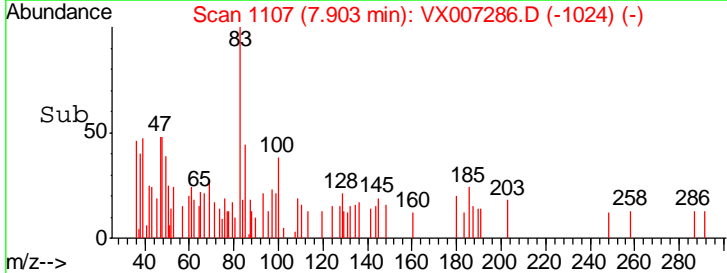
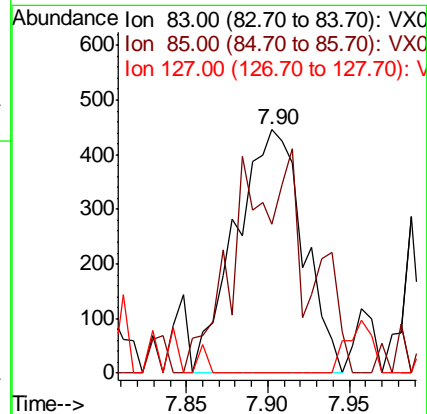
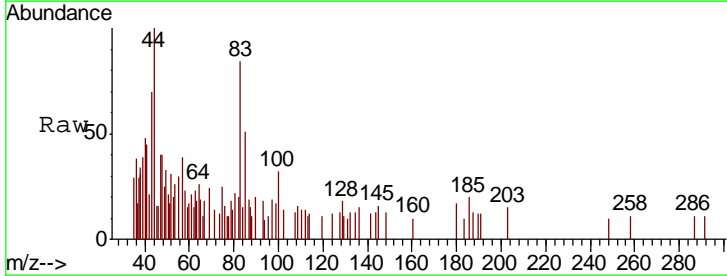
#30  
 2-Butanone  
 Concen: 1.505 ug/l  
 RT: 4.70 min Scan# 581  
 Delta R.T. -0.00 min  
 Lab File: VX007286.D  
 Acq: 29 Jan 2019 14:22

Tgt Ion	Resp	Lower	Upper
43	100		
57	4.9	3.3	4.9
72	8.8	22.0	33.0#

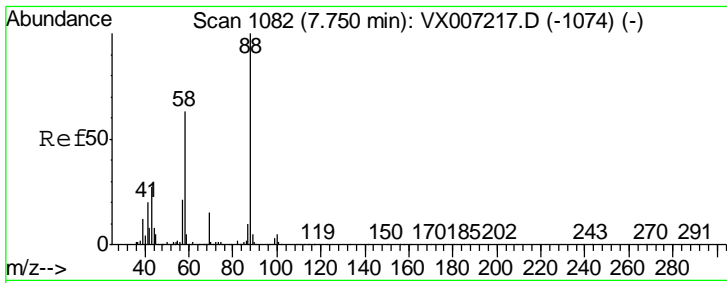


#41  
 Bromodichloromethane  
 Concen: 0.246 ug/l  
 RT: 7.90 min Scan# 1107  
 Delta R.T. 0.01 min  
 Lab File: VX007286.D  
 Acq: 29 Jan 2019 14:22

Tgt Ion	Resp	Lower	Upper
83	100		
85	39.5	48.2	72.2#
127	0.0	8.3	12.5#

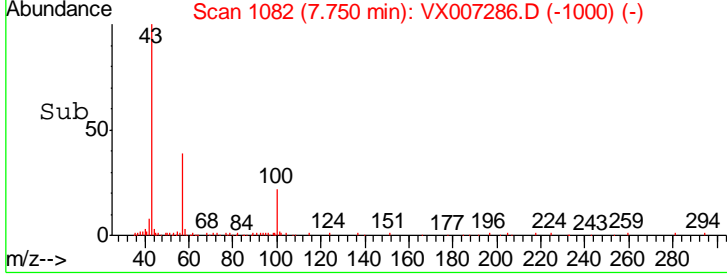
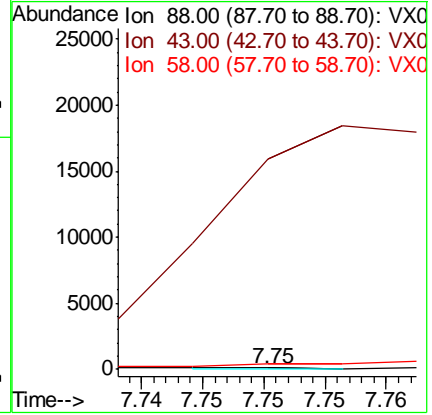
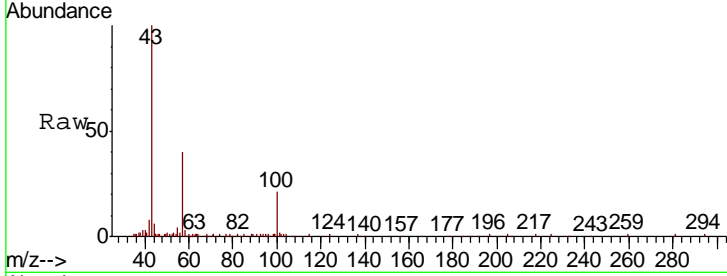






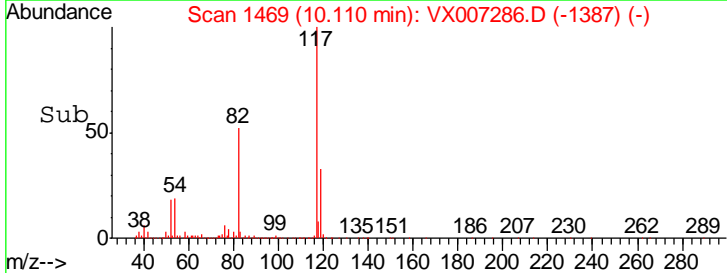
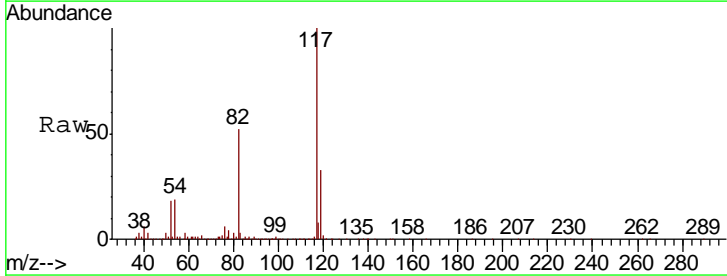
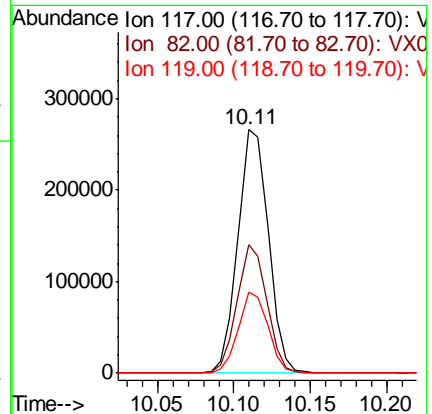
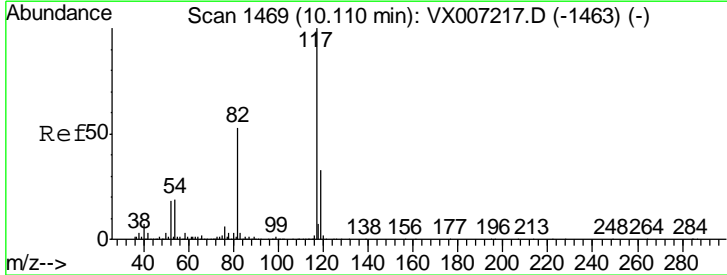
#45  
 1,4-Dioxane  
 Concen: 0.542 ug/l  
 RT: 7.75 min Scan# 1082  
 Delta R.T. -0.00 min  
 Lab File: VX007286.D  
 Acq: 29 Jan 2019 14:22

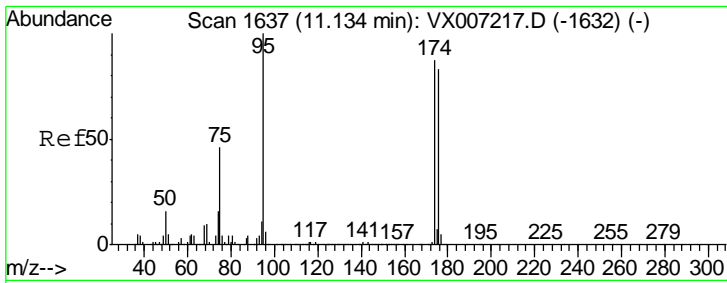
Tgt Ion	Resp	Lower	Upper
88	100		
43	61152.5	23.5	35.3#
58	0.0	51.6	77.4#



#57  
 Chlorobenzene-d5  
 Concen: 30.000 ug/l  
 RT: 10.11 min Scan# 1469  
 Delta R.T. -0.00 min  
 Lab File: VX007286.D  
 Acq: 29 Jan 2019 14:22

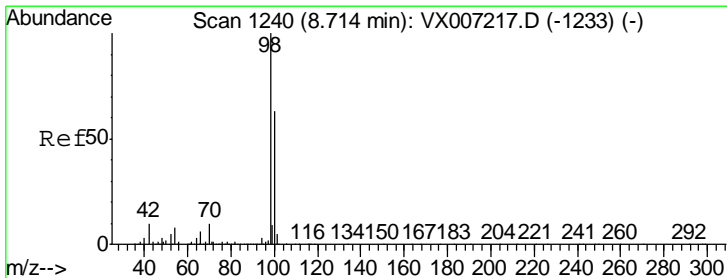
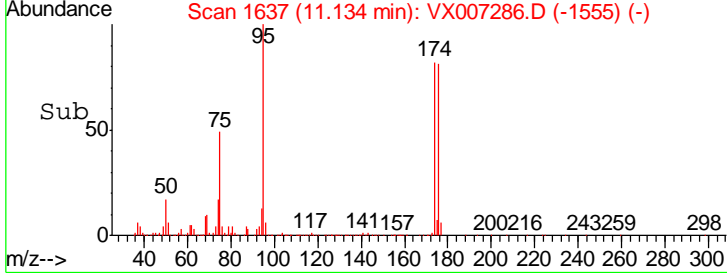
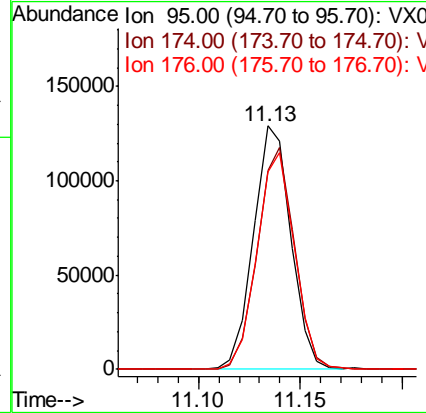
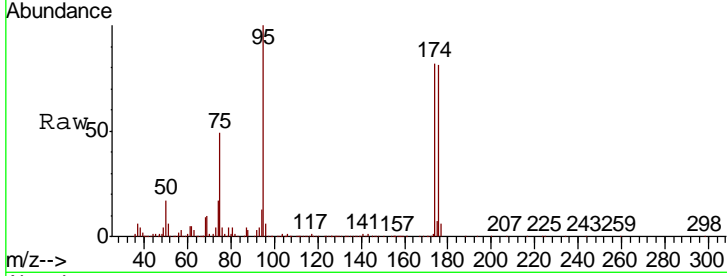
Tgt Ion	Resp	Lower	Upper
117	100		
82	51.1	41.4	62.0
119	32.1	25.7	38.5





#60  
 4-Bromofluorobenzene  
 Concen: 28.905 ug/l  
 RT: 11.13 min Scan# 1637  
 Delta R.T. -0.00 min  
 Lab File: VX007286.D  
 Acq: 29 Jan 2019 14:22

Tgt Ion	Resp	Lower	Upper
95	165048		
174	90.5	74.8	112.2
176	89.3	72.5	108.7



#63  
 Toluene-d8  
 Concen: 29.114 ug/l  
 RT: 8.71 min Scan# 1240  
 Delta R.T. -0.00 min  
 Lab File: VX007286.D  
 Acq: 29 Jan 2019 14:22

Tgt Ion	Resp	Lower	Upper
98	485483		
100	63.9	49.9	74.9

