

Data Path : Z:\VOASRV\HPCHEM1\MSVOA_X\DATA\VX013120\
 Data File : VX014782.D
 Acq On : 31 Jan 2020 15:33
 Operator : JC/SP
 Sample : L1344-03
 Misc : 5.0mL/MSVOA_X/WATER
 ALS Vial : 9 Sample Multiplier: 1

Instrument :
 MSVOA_X
 ClientSampleId :
 STORAGE-BLANK-WATER-REF-4

Quant Time: Jan 31 16:39:45 2020
 Quant Method : Z:\VOASRV\HPCHEM1\MSVOA_X\METHOD\82X012220W.M
 Quant Title : SW846 8260
 QLast Update : Wed Jan 22 12:35:15 2020
 Response via : Initial Calibration

Internal Standards	R.T.	QIon	Response	Conc	Units	Dev(Min)
1) Pentafluorobenzene	5.65	168	420612	50.00	ug/l	0.00
34) 1,4-Difluorobenzene	6.85	114	655999	50.00	ug/l	0.00
63) Chlorobenzene-d5	10.11	117	608728	50.00	ug/l	0.00
72) 1,4-Dichlorobenzene-d4	12.07	152	274280	50.00	ug/l	0.00

System Monitoring Compounds

33) 1,2-Dichloroethane-d4	6.05	65	249290	50.75	ug/l	0.00
Spiked Amount	50.000		Recovery	=	101.50%	
35) Dibromofluoromethane	5.48	113	205773	49.71	ug/l	0.00
Spiked Amount	50.000		Recovery	=	99.42%	
50) Toluene-d8	8.71	98	792131	49.78	ug/l	0.00
Spiked Amount	50.000		Recovery	=	99.56%	
62) 4-Bromofluorobenzene	11.13	95	269610	47.56	ug/l	0.00
Spiked Amount	50.000		Recovery	=	95.12%	

Target Compounds

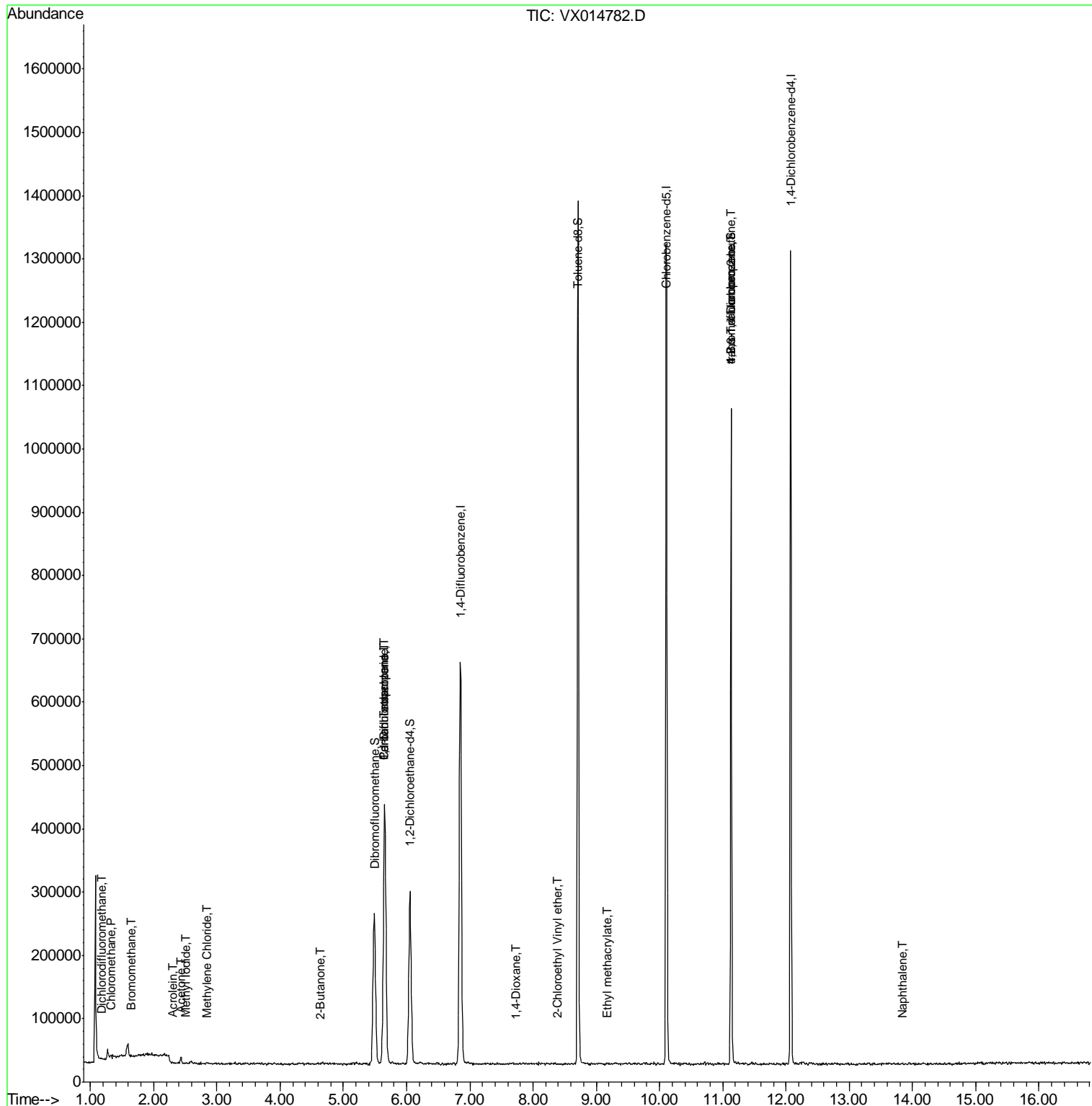
						Qvalue
2) Dichlorodifluoromethane	1.19	85	338	0.59	ug/l	87
3) Chloromethane	1.32	50	2852	0.50	ug/l #	88
5) Bromomethane	1.64	94	1306	0.31	ug/l	99
6) Chloroethane	1.73	64	570	Below Cal	#	65
10) Methyl Iodide	2.52	142	2214	0.40	ug/l #	89
13) Acrolein	2.30	56	273	0.31	ug/l #	14
16) Acetone	2.43	43	11965	4.59	ug/l	99
20) Methylene Chloride	2.85	84	2018	0.41	ug/l	97
25) 2-Butanone	4.64	43	781	0.20	ug/l	91
36) 1,1-Dichloropropene	5.65	75	31036	5.09	ug/l #	51
38) Carbon Tetrachloride	5.65	117	36125	6.21	ug/l #	16
41) Methacrylonitrile	5.03	41	315	Below Cal	#	1
49) 1,4-Dioxane	7.73	88	157	1.36	ug/l #	1
56) Ethyl methacrylate	9.18	69	300	1.82	ug/l #	1
58) 2-Chloroethyl Vinyl ether	8.39	63	986	0.41	ug/l	91
76) 1,2,3-Trichloropropane	11.13	75	134008	21.00	ug/l #	39
81) trans-1,4-Dichloro-2-buten	11.13	75	134008	59.76	ug/l #	10
95) Naphthalene	13.83	128	1261	1.00	ug/l #	38

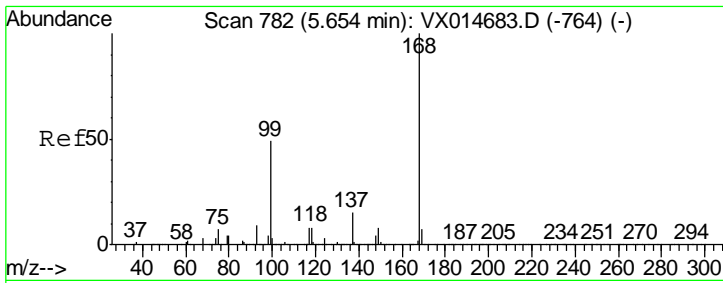
(#) = qualifier out of range (m) = manual integration (+) = signals summed

Data Path : Z:\VOASRV\HPCHEM1\MSVOA_X\DATA\VX013120\
 Data File : VX014782.D
 Acq On : 31 Jan 2020 15:33
 Operator : JC/SP
 Sample : L1344-03
 Misc : 5.0mL/MSVOA_X/WATER
 ALS Vial : 9 Sample Multiplier: 1

Instrument :
 MSVOA_X
Client Sampled :
 STORAGE-BLANK-WATER-REF-4

Quant Time: Jan 31 16:39:45 2020
 Quant Method : Z:\VOASRV\HPCHEM1\MSVOA_X\METHOD\82X012220W.M
 Quant Title : SW846 8260
 QLast Update : Wed Jan 22 12:35:15 2020
 Response via : Initial Calibration

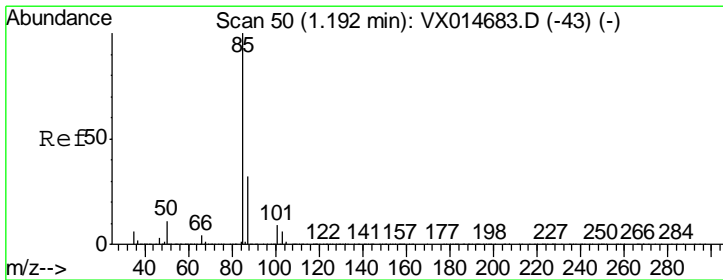
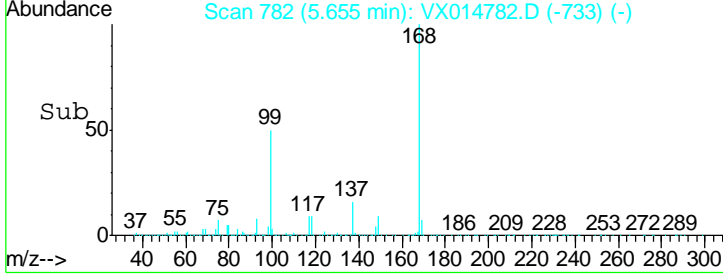
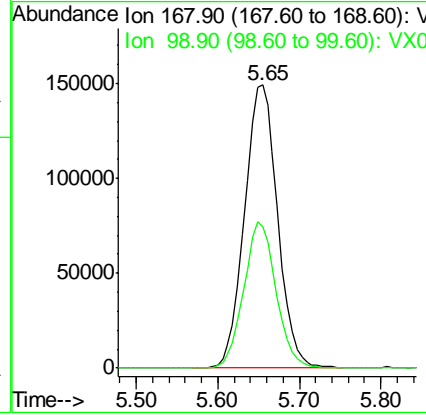
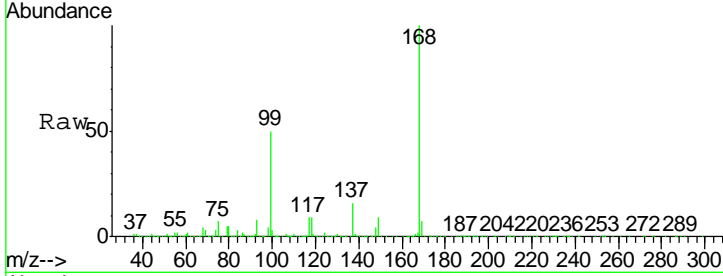




#1
 Pentafluorobenzene
 Concen: 50.00 ug/l
 RT: 5.65 min Scan# 782
 Delta R.T. 0.00 min
 Lab File: VX014782.D
 Acq: 31 Jan 2020 15:33

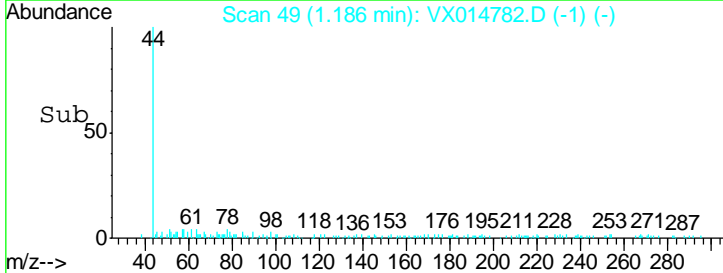
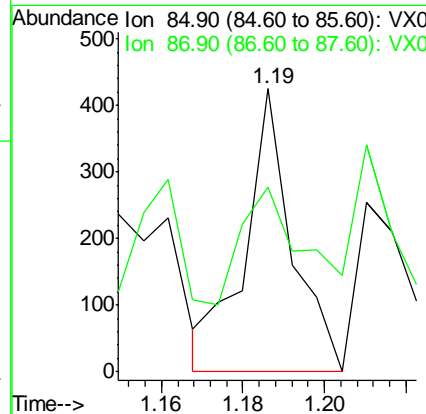
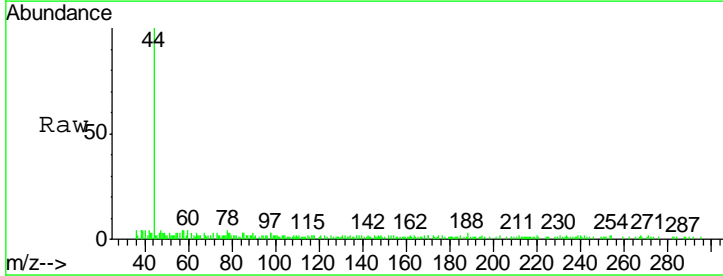
Instrument :
 MSVOA_X
ClientSampled :
 STORAGE-BLANK-WATER-REF-4

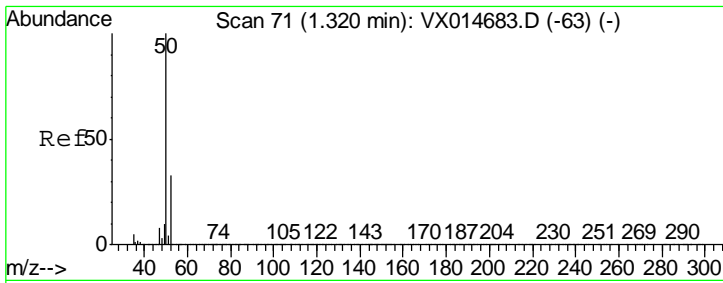
Tgt Ion: 168 Resp: 420612
 Ion Ratio Lower Upper
 168 100
 99 49.7 39.8 59.6



#2
 Dichlorodifluoromethane
 Concen: 0.59 ug/l
 RT: 1.19 min Scan# 49
 Delta R.T. -0.01 min
 Lab File: VX014782.D
 Acq: 31 Jan 2020 15:33

Tgt Ion: 85 Resp: 338
 Ion Ratio Lower Upper
 85 100
 87 39.5 16.2 48.5

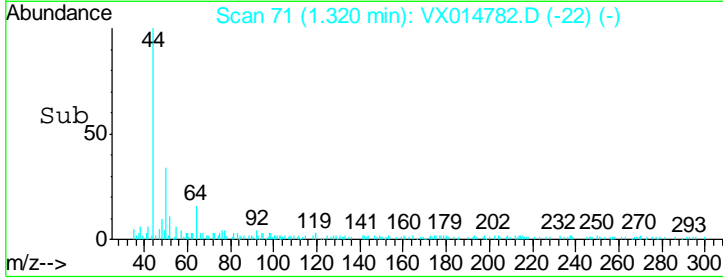
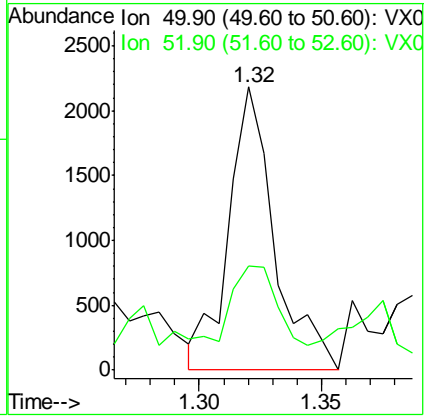
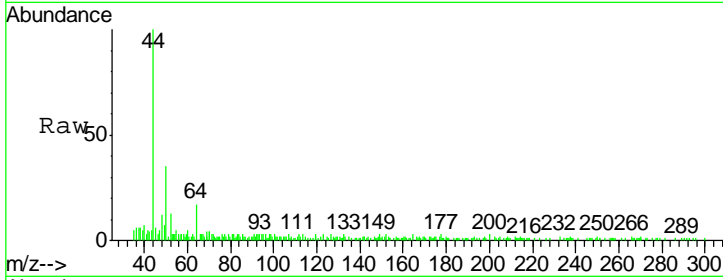




#3
 Chloromethane
 Concen: 0.50 ug/l
 RT: 1.32 min Scan# 71
 Delta R.T. 0.00 min
 Lab File: VX014782.D
 Acq: 31 Jan 2020 15:33

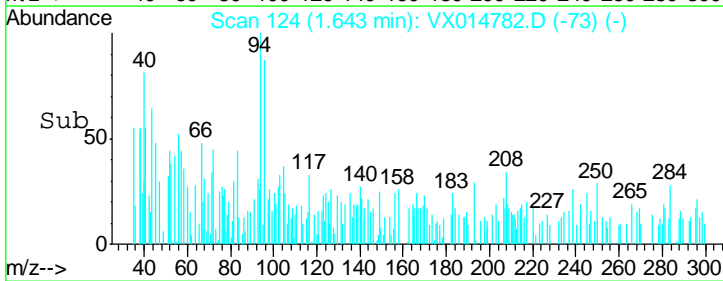
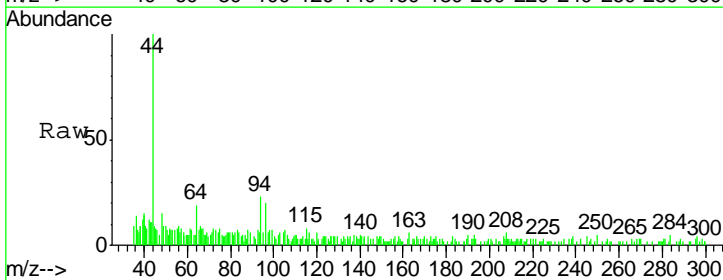
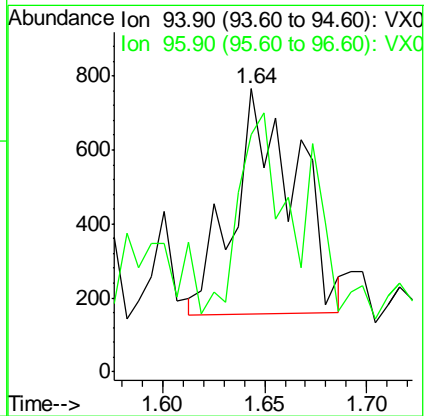
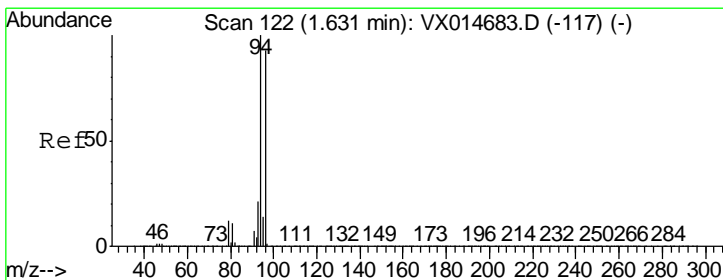
Instrument :
 MSVOA_X
ClientSampleId :
 STORAGE-BLANK-WATER-REF-4

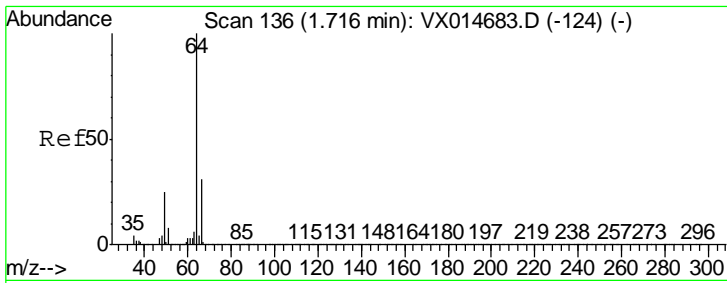
Tgt Ion: 50 Resp: 2852
 Ion Ratio Lower Upper
 50 100
 52 25.8 26.2 39.2#



#5
 Bromomethane
 Concen: 0.31 ug/l
 RT: 1.64 min Scan# 124
 Delta R.T. 0.01 min
 Lab File: VX014782.D
 Acq: 31 Jan 2020 15:33

Tgt Ion: 94 Resp: 1306
 Ion Ratio Lower Upper
 94 100
 96 94.1 74.7 112.1

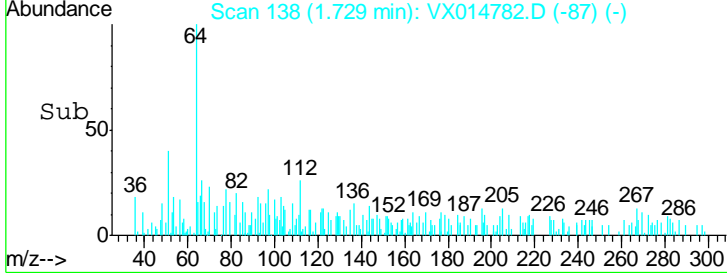
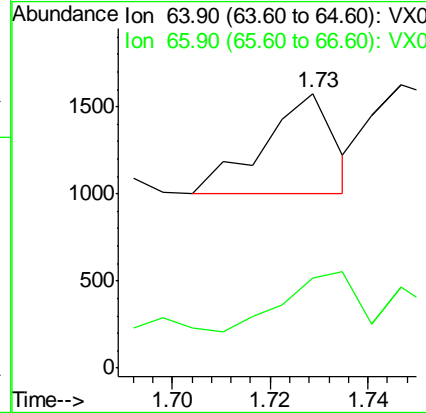
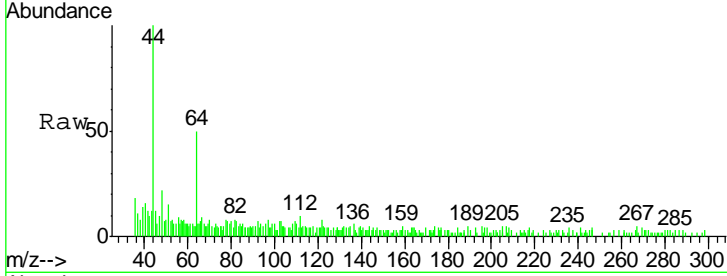




#6
 Chloroethane
 Concen: Below Cal
 RT: 1.73 min Scan# 138
 Delta R.T. 0.01 min
 Lab File: VX014782.D
 Acq: 31 Jan 2020 15:33

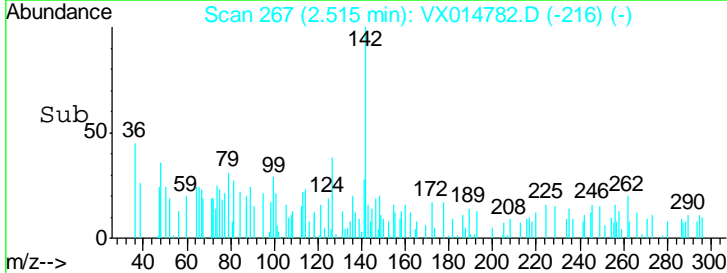
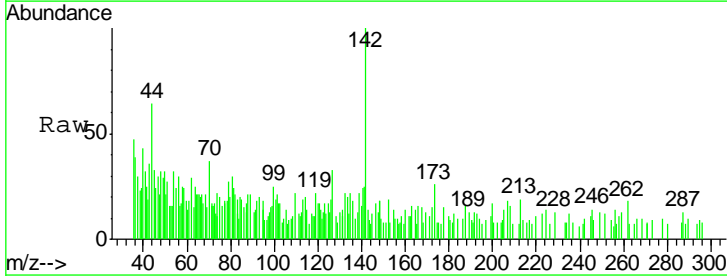
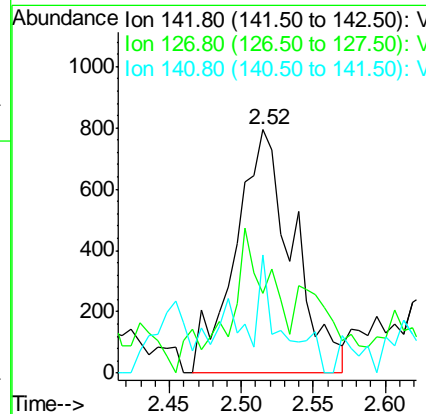
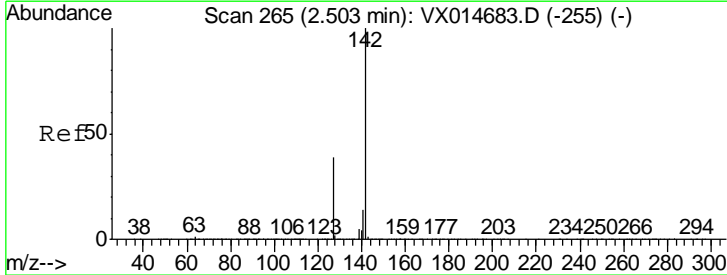
Instrument :
 MSVOA_X
ClientSampled :
 STORAGE-BLANK-WATER-REF-4

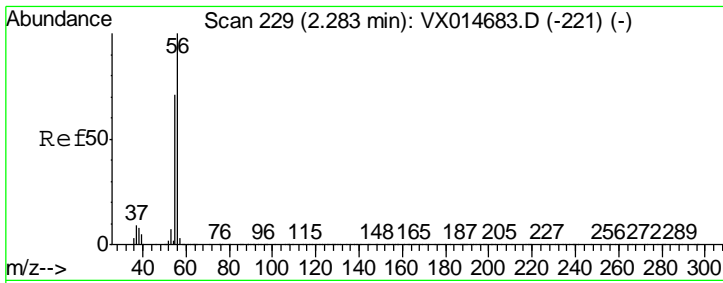
Tgt Ion: 64 Resp: 570
 Ion Ratio Lower Upper
 64 100
 66 50.7 25.2 37.8#



#10
 Methyl Iodide
 Concen: 0.40 ug/l
 RT: 2.52 min Scan# 267
 Delta R.T. 0.01 min
 Lab File: VX014782.D
 Acq: 31 Jan 2020 15:33

Tgt Ion: 142 Resp: 2214
 Ion Ratio Lower Upper
 142 100
 127 31.8 31.1 46.7
 141 18.1 11.3 16.9#

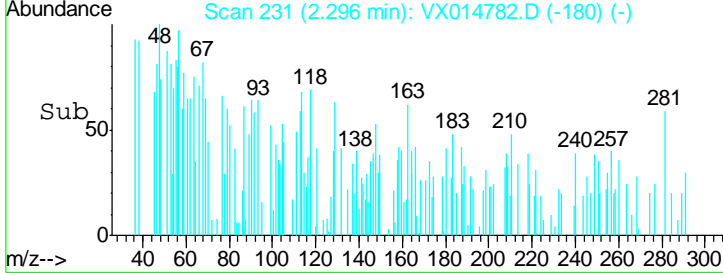
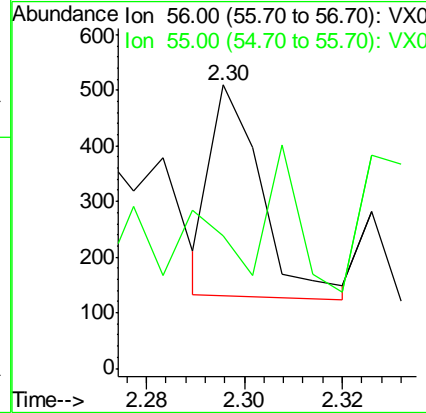
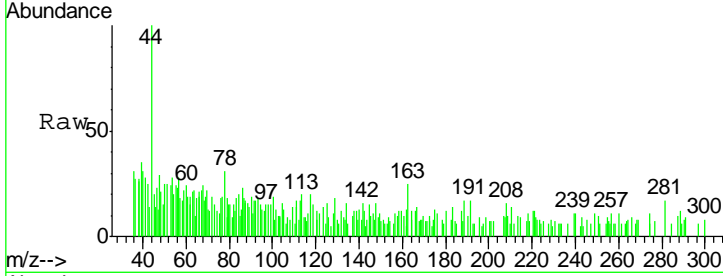




#13
 Acrolein
 Concen: 0.31 ug/l
 RT: 2.30 min Scan# 231
 Delta R.T. 0.01 min
 Lab File: VX014782.D
 Acq: 31 Jan 2020 15:33

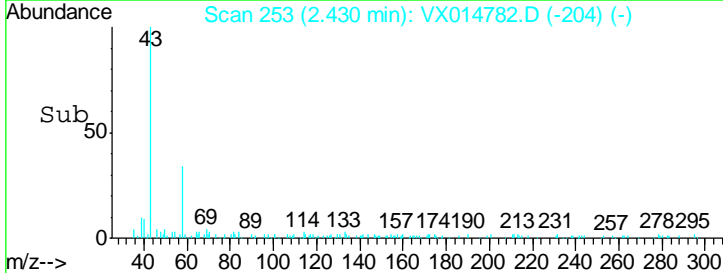
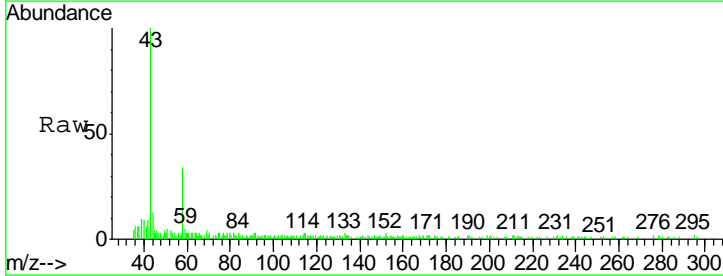
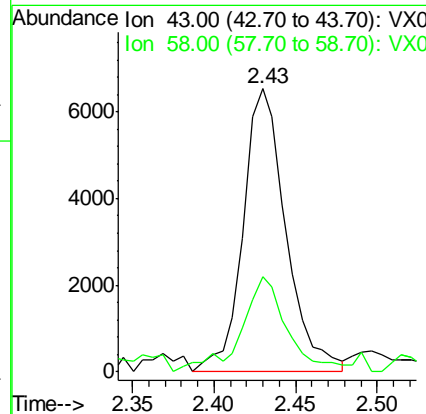
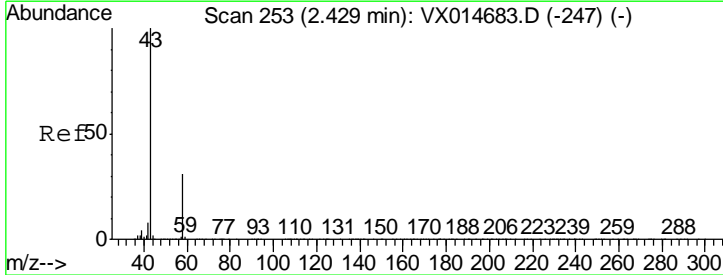
Instrument :
 MSVOA_X
 ClientSampleID :
 STORAGE-BLANK-WATER-REF-4

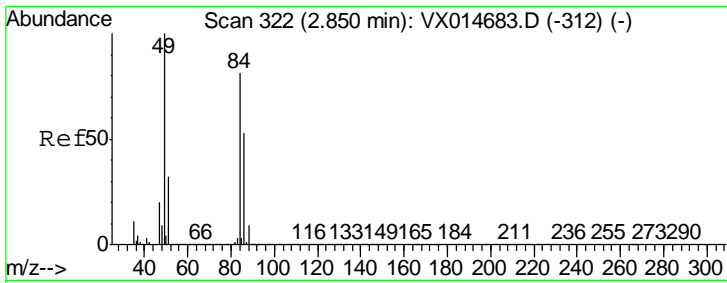
Tgt Ion: 56 Resp: 273
 Ion Ratio Lower Upper
 56 100
 55 0.0 56.6 84.8#



#16
 Acetone
 Concen: 4.59 ug/l
 RT: 2.43 min Scan# 253
 Delta R.T. 0.00 min
 Lab File: VX014782.D
 Acq: 31 Jan 2020 15:33

Tgt Ion: 43 Resp: 11965
 Ion Ratio Lower Upper
 43 100
 58 31.0 24.5 36.7

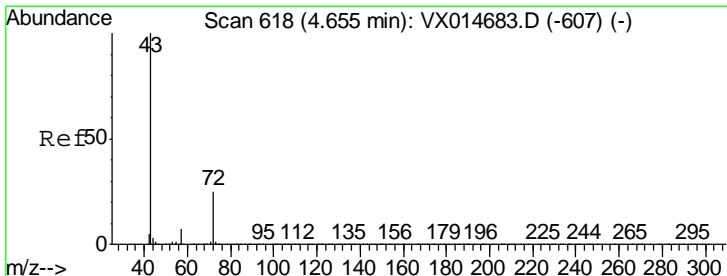
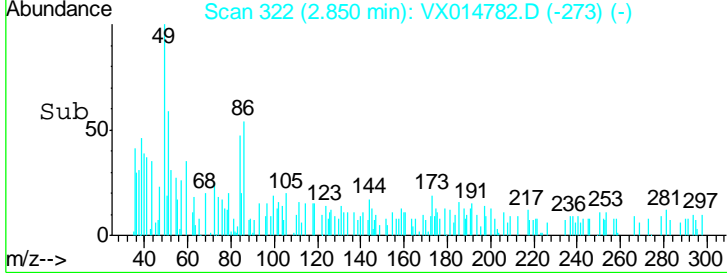
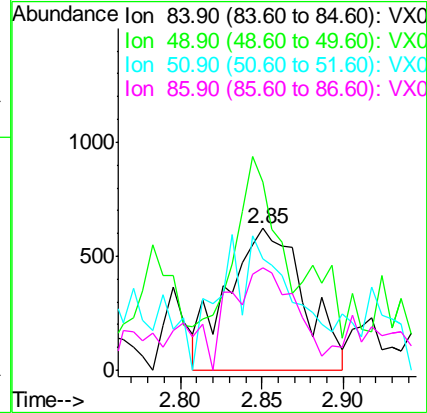
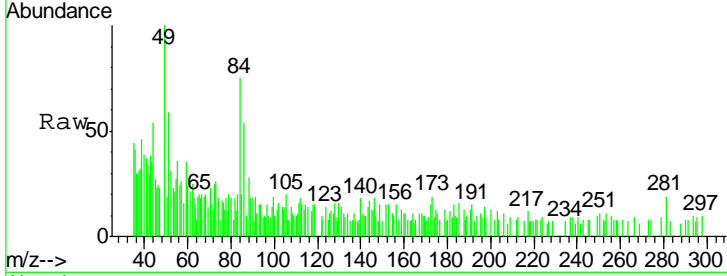




#20
 Methylene Chloride
 Concen: 0.41 ug/l
 RT: 2.85 min Scan# 322
 Delta R.T. 0.00 min
 Lab File: VX014782.D
 Acq: 31 Jan 2020 15:33

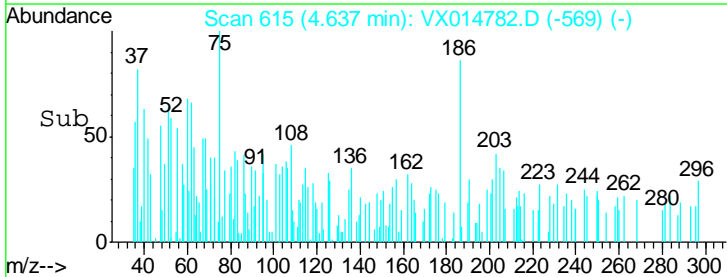
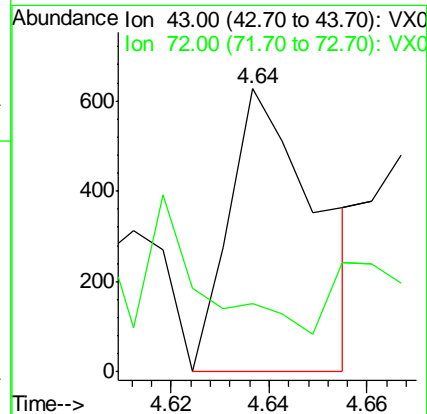
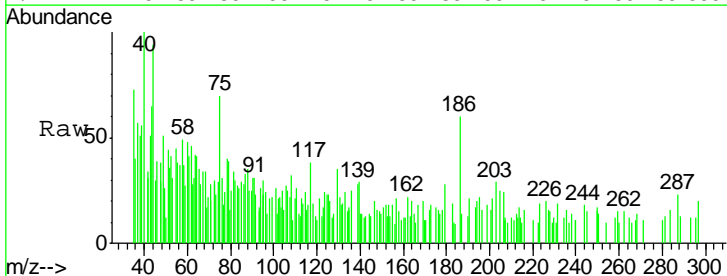
Instrument :
 MSVOA_X
ClientSampled :
 STORAGE-BLANK-WATER-REF-4

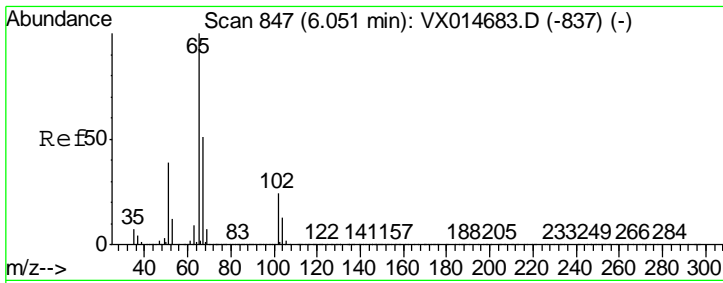
Tgt Ion	Resp	Lower	Upper
84	100		
49	120.0	98.2	147.4
51	45.4	31.3	46.9
86	65.3	51.8	77.6



#25
 2-Butanone
 Concen: 0.20 ug/l
 RT: 4.64 min Scan# 615
 Delta R.T. -0.02 min
 Lab File: VX014782.D
 Acq: 31 Jan 2020 15:33

Tgt Ion	Resp	Lower	Upper
43	100		
72	20.3	19.9	29.9

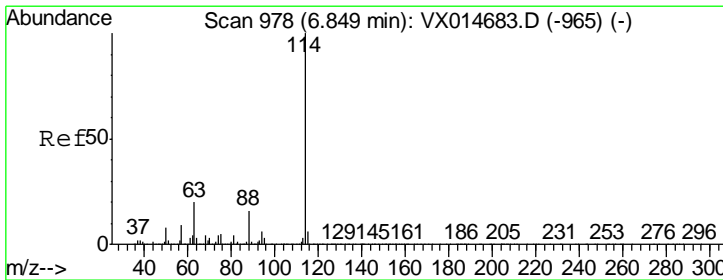
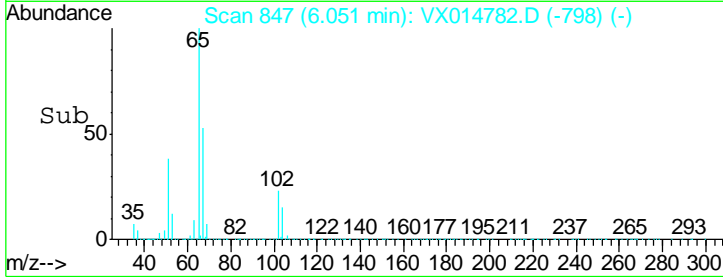
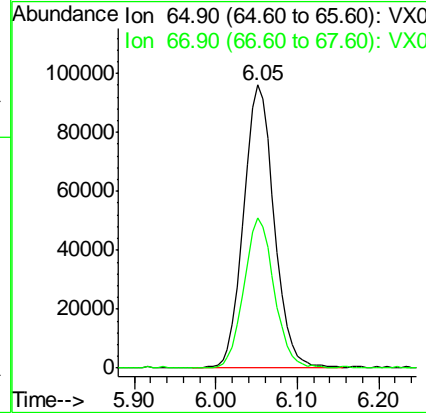
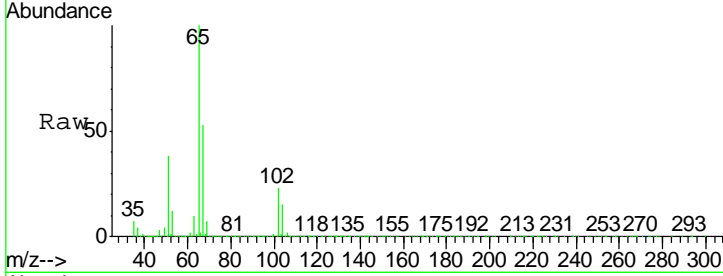




#33
 1,2-Dichloroethane-d4
 Concen: 50.75 ug/l
 RT: 6.05 min Scan# 847
 Delta R.T. 0.00 min
 Lab File: VX014782.D
 Acq: 31 Jan 2020 15:33

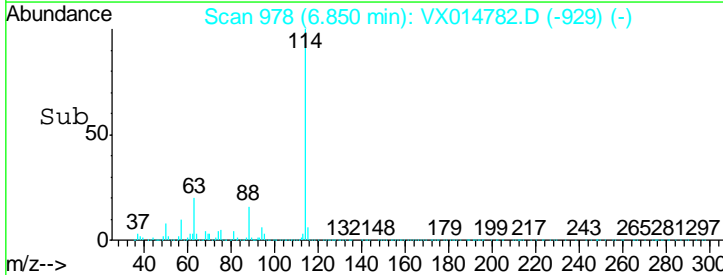
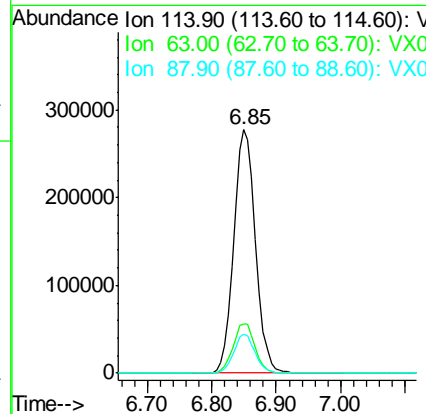
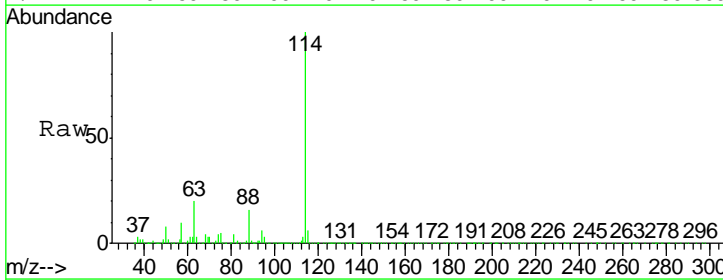
Instrument :
 MSVOA_X
ClientSampled :
 STORAGE-BLANK-WATER-REF-4

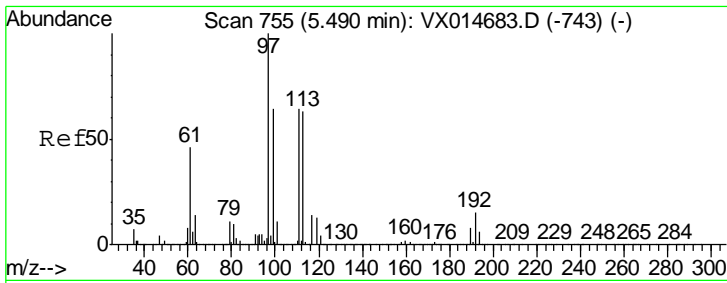
Tgt Ion: 65 Resp: 249290
 Ion Ratio Lower Upper
 65 100
 67 52.2 0.0 107.4



#34
 1,4-Difluorobenzene
 Concen: 50.00 ug/l
 RT: 6.85 min Scan# 978
 Delta R.T. 0.00 min
 Lab File: VX014782.D
 Acq: 31 Jan 2020 15:33

Tgt Ion: 114 Resp: 655999
 Ion Ratio Lower Upper
 114 100
 63 20.2 0.0 40.6
 88 15.9 0.0 31.2

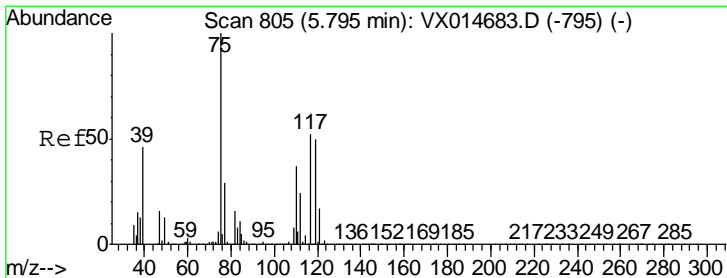
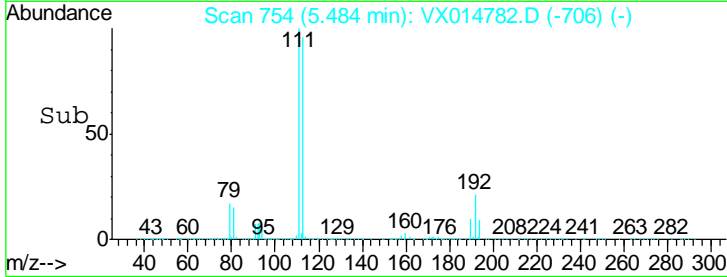
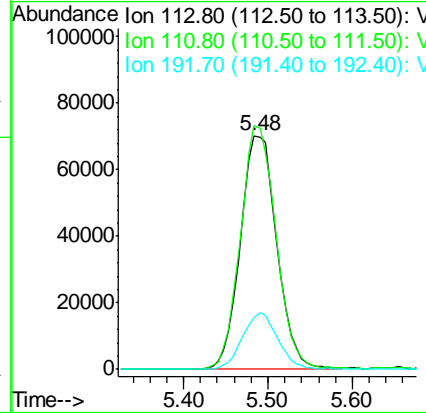
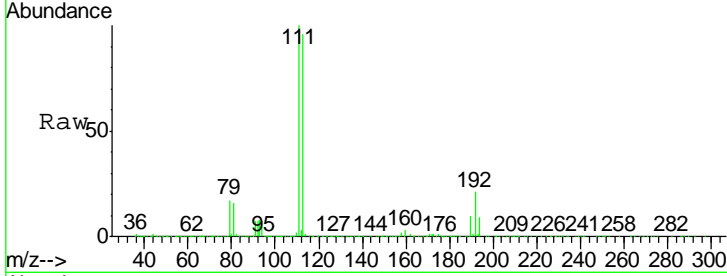




#35
 Dibromofluoromethane
 Concen: 49.71 ug/l
 RT: 5.48 min Scan# 754
 Delta R.T. -0.01 min
 Lab File: VX014782.D
 Acq: 31 Jan 2020 15:33

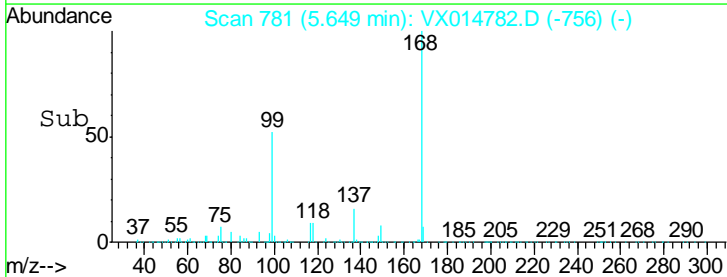
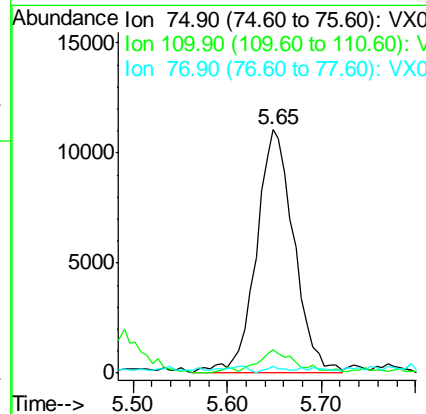
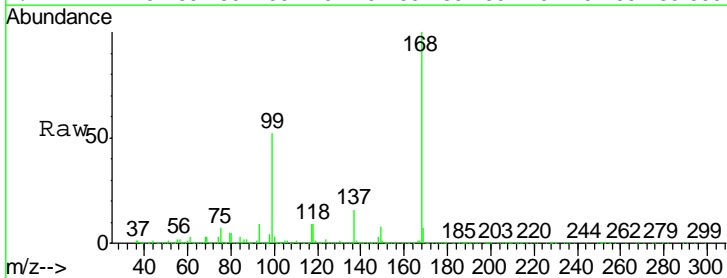
Instrument :
 MSVOA_X
ClientSampleId :
 STORAGE-BLANK-WATER-REF-4

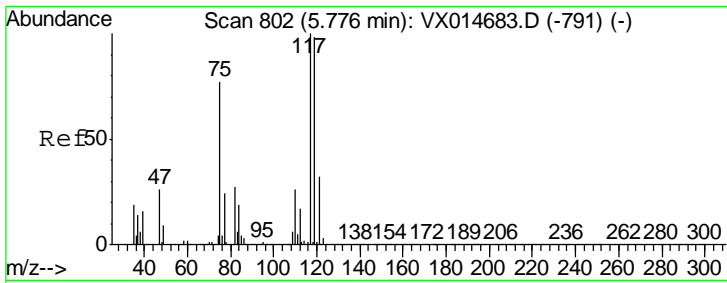
Tgt Ion	Resp	Lower	Upper
113	205773		
113	100		
111	102.0	80.7	121.1
192	23.4	18.5	27.7



#36
 1,1-Dichloropropene
 Concen: 5.09 ug/l
 RT: 5.65 min Scan# 781
 Delta R.T. -0.15 min
 Lab File: VX014782.D
 Acq: 31 Jan 2020 15:33

Tgt Ion	Resp	Lower	Upper
75	31036		
75	100		
110	8.8	17.9	53.7#
77	1.4	24.1	36.1#

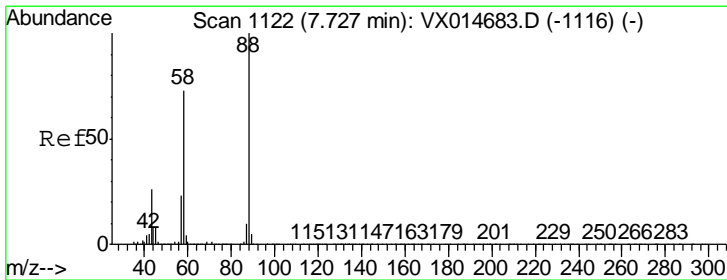
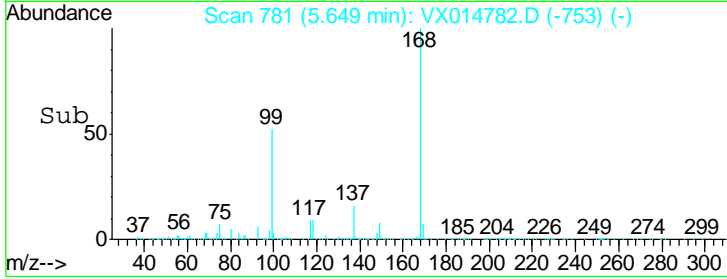
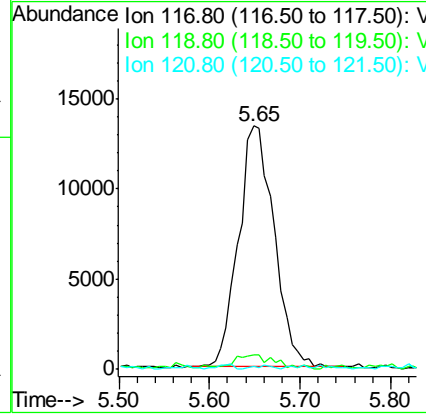
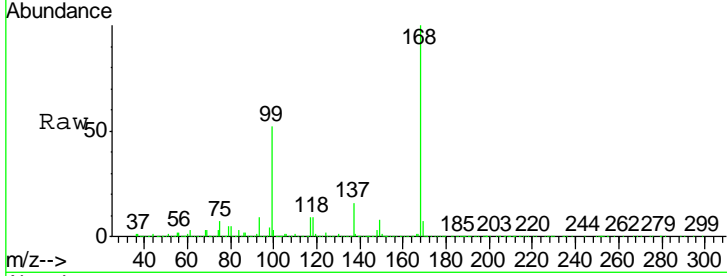




#38
 Carbon Tetrachloride
 Concen: 6.21 ug/l
 RT: 5.65 min Scan# 781
 Delta R.T. -0.13 min
 Lab File: VX014782.D
 Acq: 31 Jan 2020 15:33

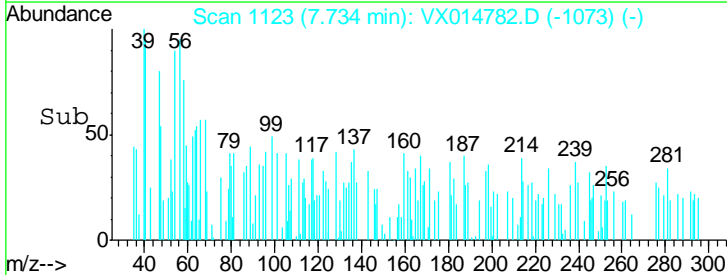
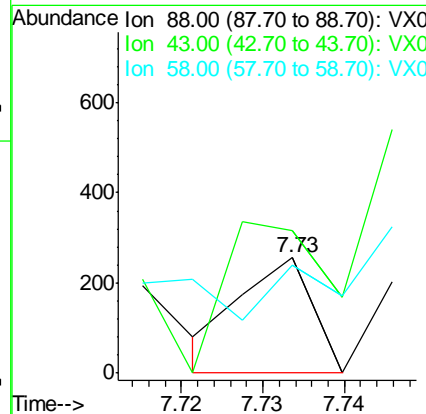
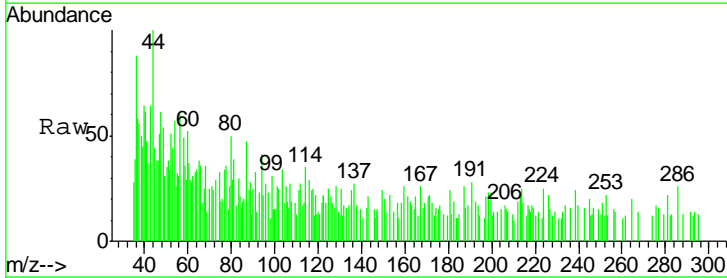
Instrument :
 MSVOA_X
ClientSampled :
 STORAGE-BLANK-WATER-REF-4

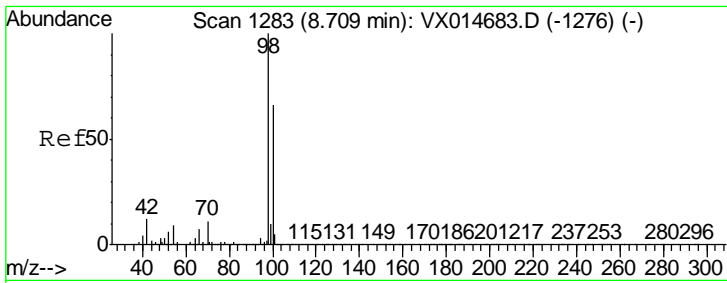
Tgt Ion	Resp	Lower	Upper
117	36125		
119	5.5	77.9	116.9#
121	0.7	25.4	38.2#



#49
 1,4-Dioxane
 Concen: 1.36 ug/l
 RT: 7.73 min Scan# 1123
 Delta R.T. 0.01 min
 Lab File: VX014782.D
 Acq: 31 Jan 2020 15:33

Tgt Ion	Resp	Lower	Upper
88	157		
43	191.7	26.2	39.2#
58	0.0	56.6	85.0#

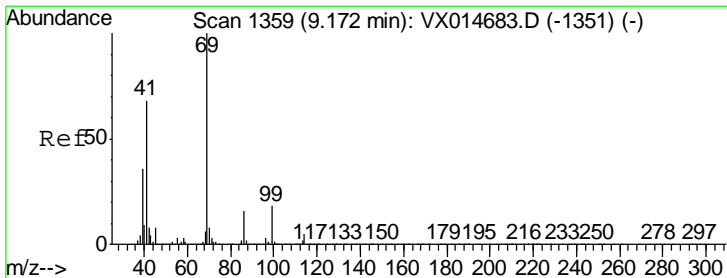
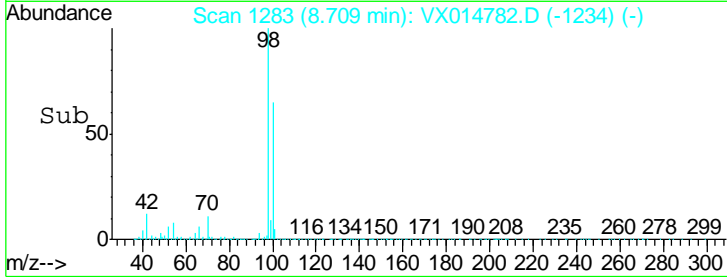
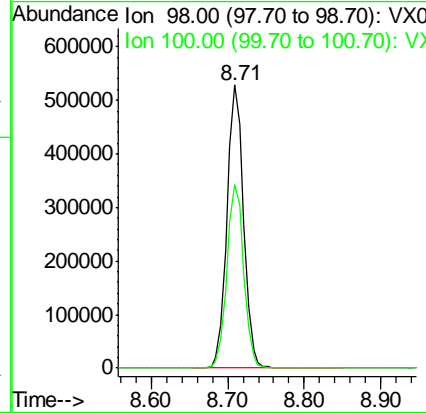
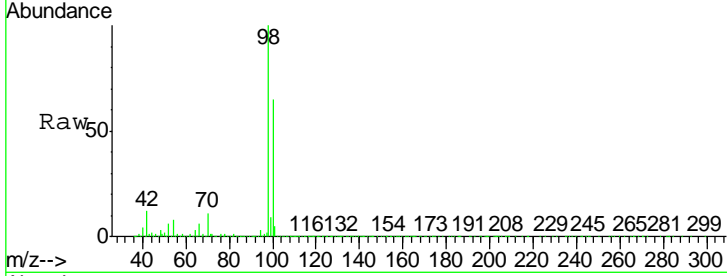




#50
 Toluene-d8
 Concen: 49.78 ug/l
 RT: 8.71 min Scan# 1283
 Delta R.T. 0.00 min
 Lab File: VX014782.D
 Acq: 31 Jan 2020 15:33

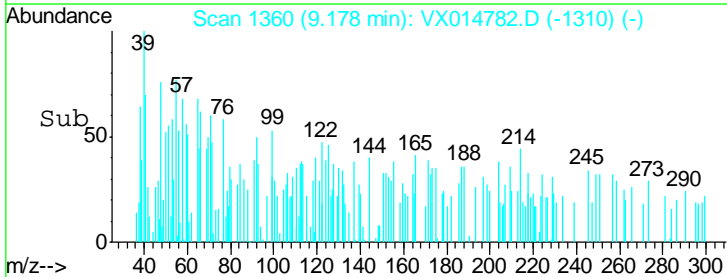
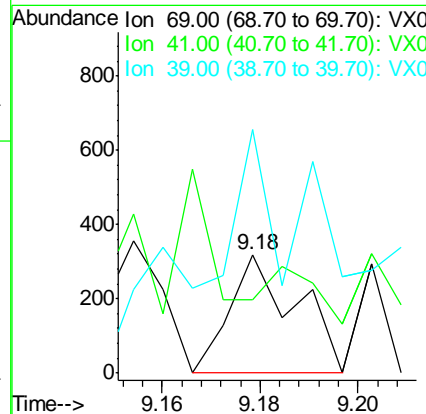
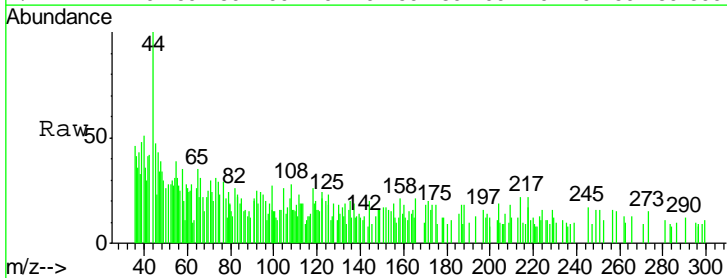
Instrument :
 MSVOA_X
ClientSampled :
 STORAGE-BLANK-WATER-REF-4

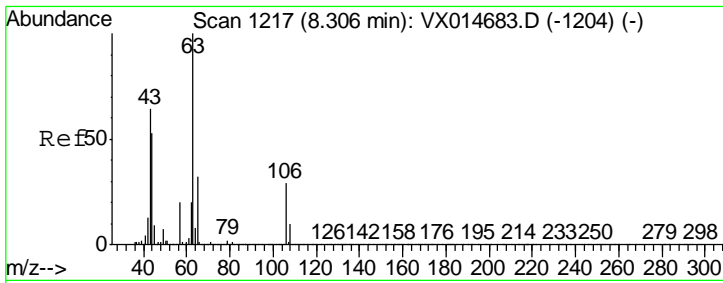
Tgt Ion	Resp	Lower	Upper
98	792131		
100	65.6	53.0	79.6



#56
 Ethyl methacrylate
 Concen: 1.82 ug/l
 RT: 9.18 min Scan# 1360
 Delta R.T. 0.01 min
 Lab File: VX014782.D
 Acq: 31 Jan 2020 15:33

Tgt Ion	Resp	Lower	Upper
69	300		
41	0.0	54.9	82.3#
39	125.0	29.3	43.9#

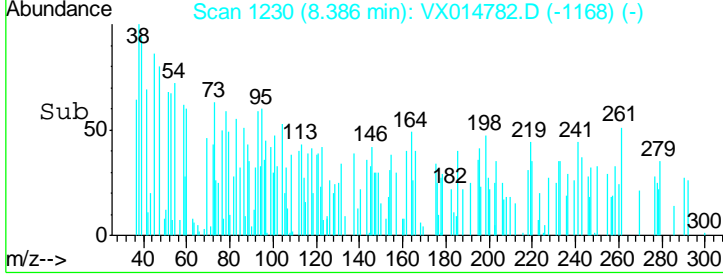
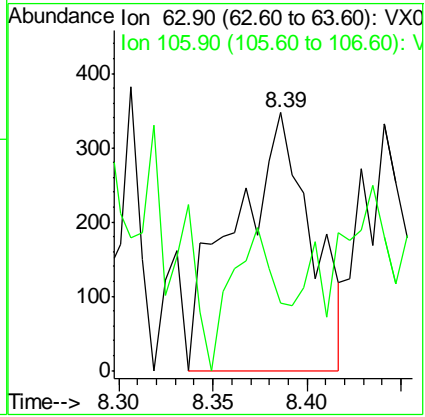
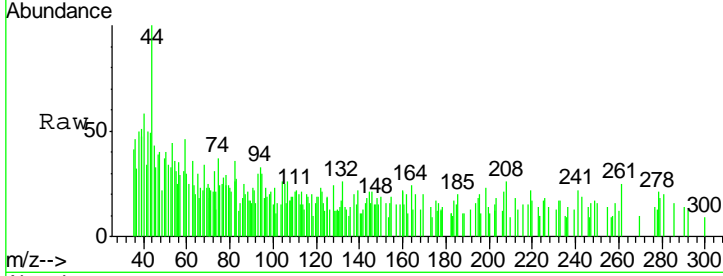




#58
 2-Chloroethyl Vinyl ether
 Concen: 0.41 ug/l
 RT: 8.39 min Scan# 1230
 Delta R.T. 0.08 min
 Lab File: VX014782.D
 Acq: 31 Jan 2020 15:33

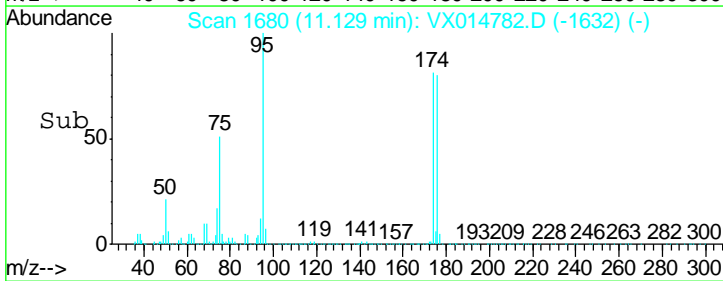
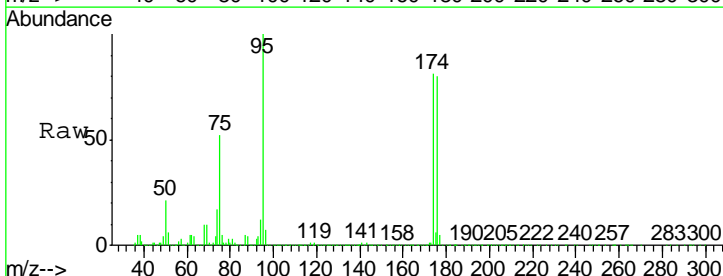
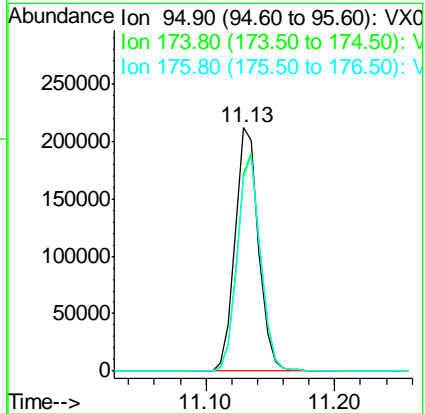
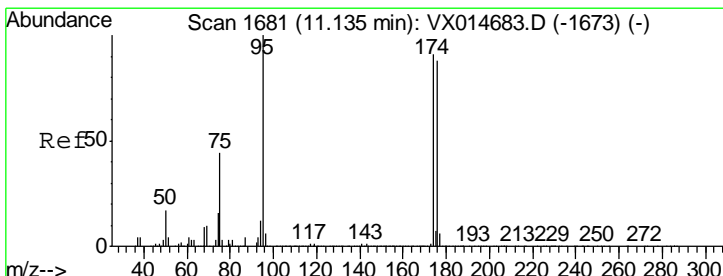
Instrument :
 MSVOA_X
ClientSampled :
 STORAGE-BLANK-WATER-REF-4

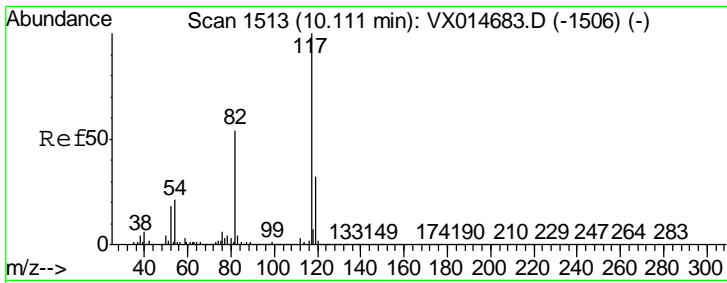
Tgt Ion	Resp	Lower	Upper
63	100		
106	33.4	22.7	34.1



#62
 4-Bromofluorobenzene
 Concen: 47.56 ug/l
 RT: 11.13 min Scan# 1680
 Delta R.T. -0.01 min
 Lab File: VX014782.D
 Acq: 31 Jan 2020 15:33

Tgt Ion	Resp	Lower	Upper
95	100		
174	88.6	0.0	176.0
176	86.3	0.0	172.2

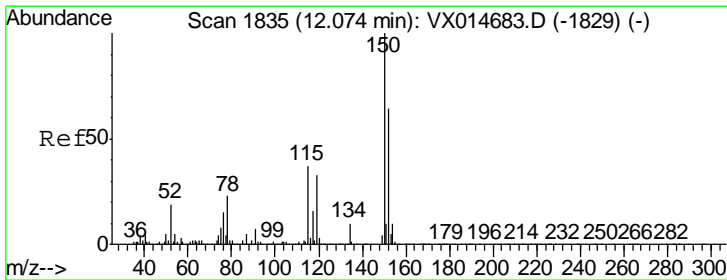
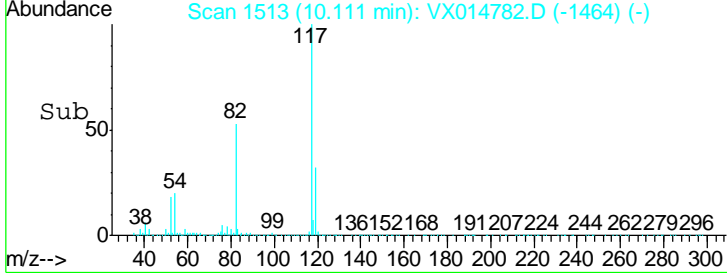
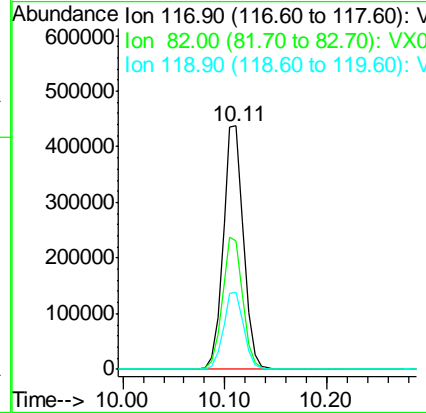
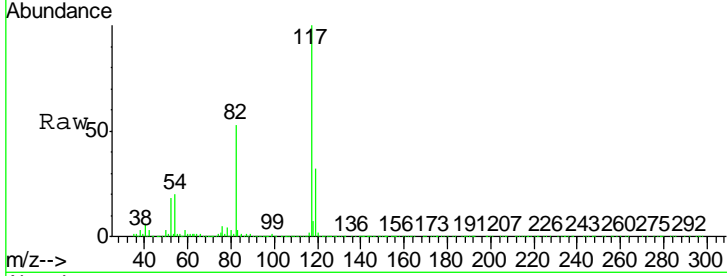




#63
 Chlorobenzene-d5
 Concen: 50.00 ug/l
 RT: 10.11 min Scan# 1513
 Delta R.T. 0.00 min
 Lab File: VX014782.D
 Acq: 31 Jan 2020 15:33

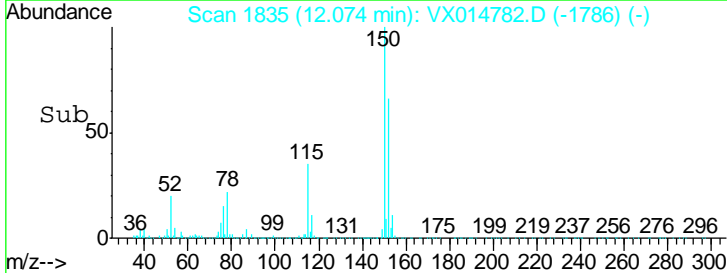
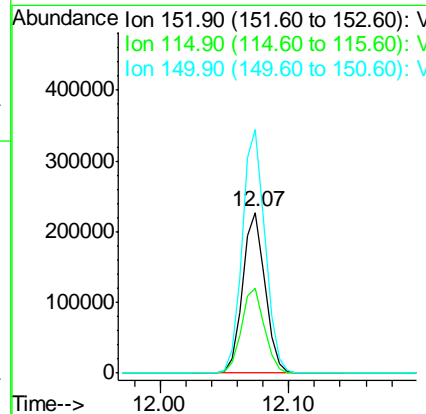
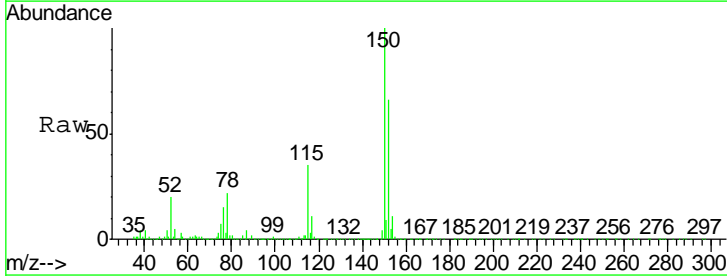
Instrument : MSVOA_X
 ClientSampled : STORAGE-BLANK-WATER-REF-4

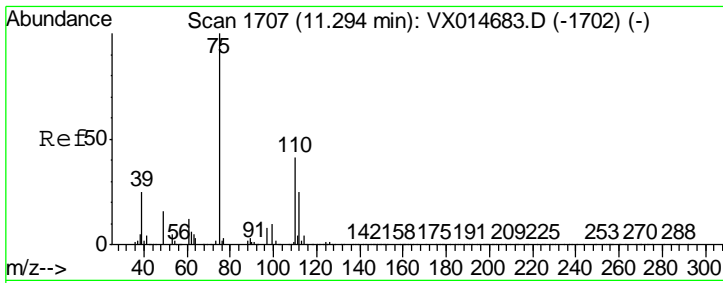
Tgt Ion	Resp	Lower	Upper
117	100		
82	52.6	43.2	64.8
119	32.0	25.8	38.6



#72
 1,4-Dichlorobenzene-d4
 Concen: 50.00 ug/l
 RT: 12.07 min Scan# 1835
 Delta R.T. 0.00 min
 Lab File: VX014782.D
 Acq: 31 Jan 2020 15:33

Tgt Ion	Resp	Lower	Upper
152	100		
115	54.3	39.4	118.1
150	154.0	0.0	351.2

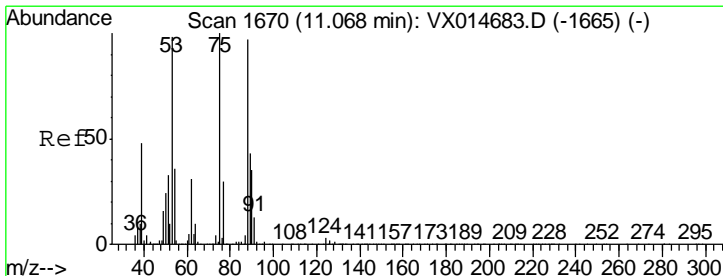
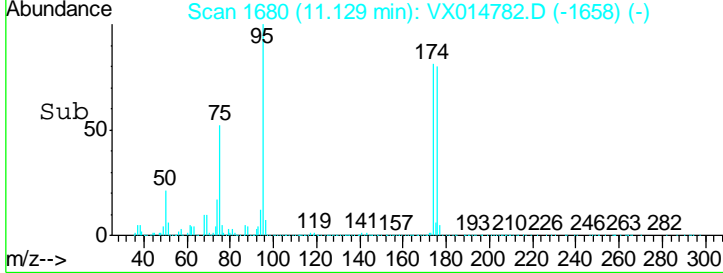
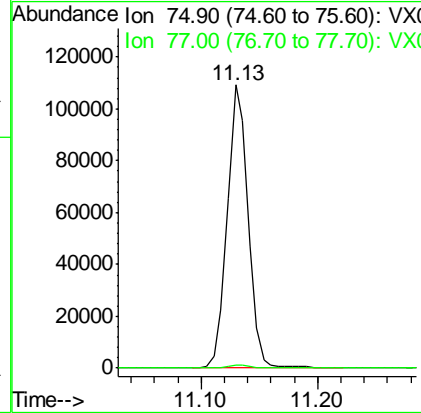
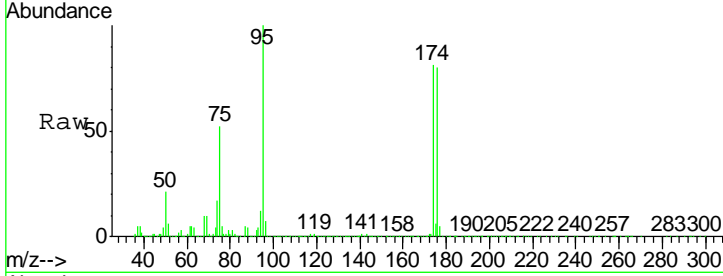




#76
 1,2,3-Trichloropropane
 Concen: 21.00 ug/l
 RT: 11.13 min Scan# 1680
 Delta R.T. -0.16 min
 Lab File: VX014782.D
 Acq: 31 Jan 2020 15:33

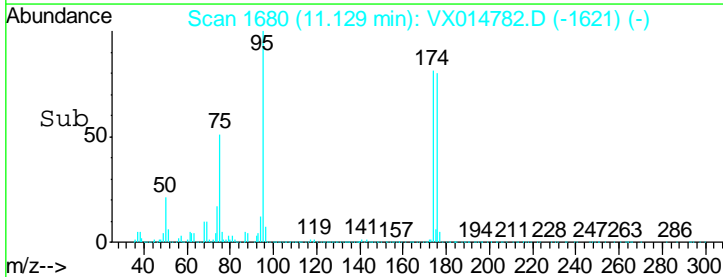
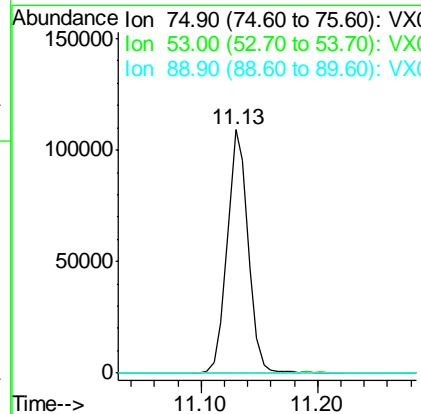
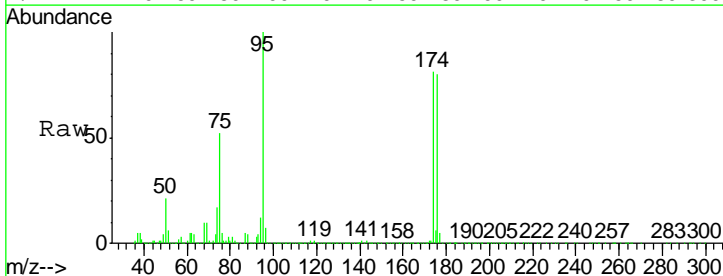
Instrument : MSVOA_X
 ClientSampled : STORAGE-BLANK-WATER-REF-4

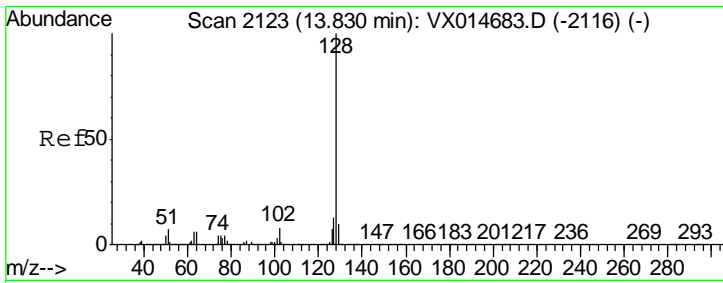
Tgt Ion: 75 Resp: 134008
 Ion Ratio Lower Upper
 75 100
 77 1.1 18.7 56.1#



#81
 trans-1,4-Dichloro-2-butene
 Concen: 59.76 ug/l
 RT: 11.13 min Scan# 1680
 Delta R.T. 0.06 min
 Lab File: VX014782.D
 Acq: 31 Jan 2020 15:33

Tgt Ion: 75 Resp: 134008
 Ion Ratio Lower Upper
 75 100
 53 0.2 78.8 118.2#
 89 0.1 35.4 53.0#





#95
 Naphthalene
 Concen: 1.00 ug/l
 RT: 13.83 min Scan# 2123
 Delta R.T. 0.00 min
 Lab File: VX014782.D
 Acq: 31 Jan 2020 15:33

Instrument :
 MSVOA_X
ClientSampled :
 STORAGE-BLANK-WATER-REF-4

Tgt Ion	Resp	Lower	Upper
128	1261		
127	52.1	10.3	15.5#
129	4.0	8.6	12.8#

