

Data Path : Z:\voasrv\HPCHEM1\MSVOA\_X\Data\VX020122\  
 Data File : VX026704.D  
 Acq On : 01 Feb 2022 14:11  
 Operator : JC/MD  
 Sample : N1325-20  
 Misc : 5.0mL/MSVOA\_X/WATER  
 ALS Vial : 9 Sample Multiplier: 1

Instrument :  
 MSVOA\_X  
 ClientSampleId :  
 TEX-3

Quant Time: Feb 02 04:35:29 2022  
 Quant Method : Z:\voasrv\HPCHEM1\MSVOA\_X\Method\82X011122W.M  
 Quant Title : SW846 8260  
 QLast Update : Tue Jan 11 14:45:13 2022  
 Response via : Initial Calibration

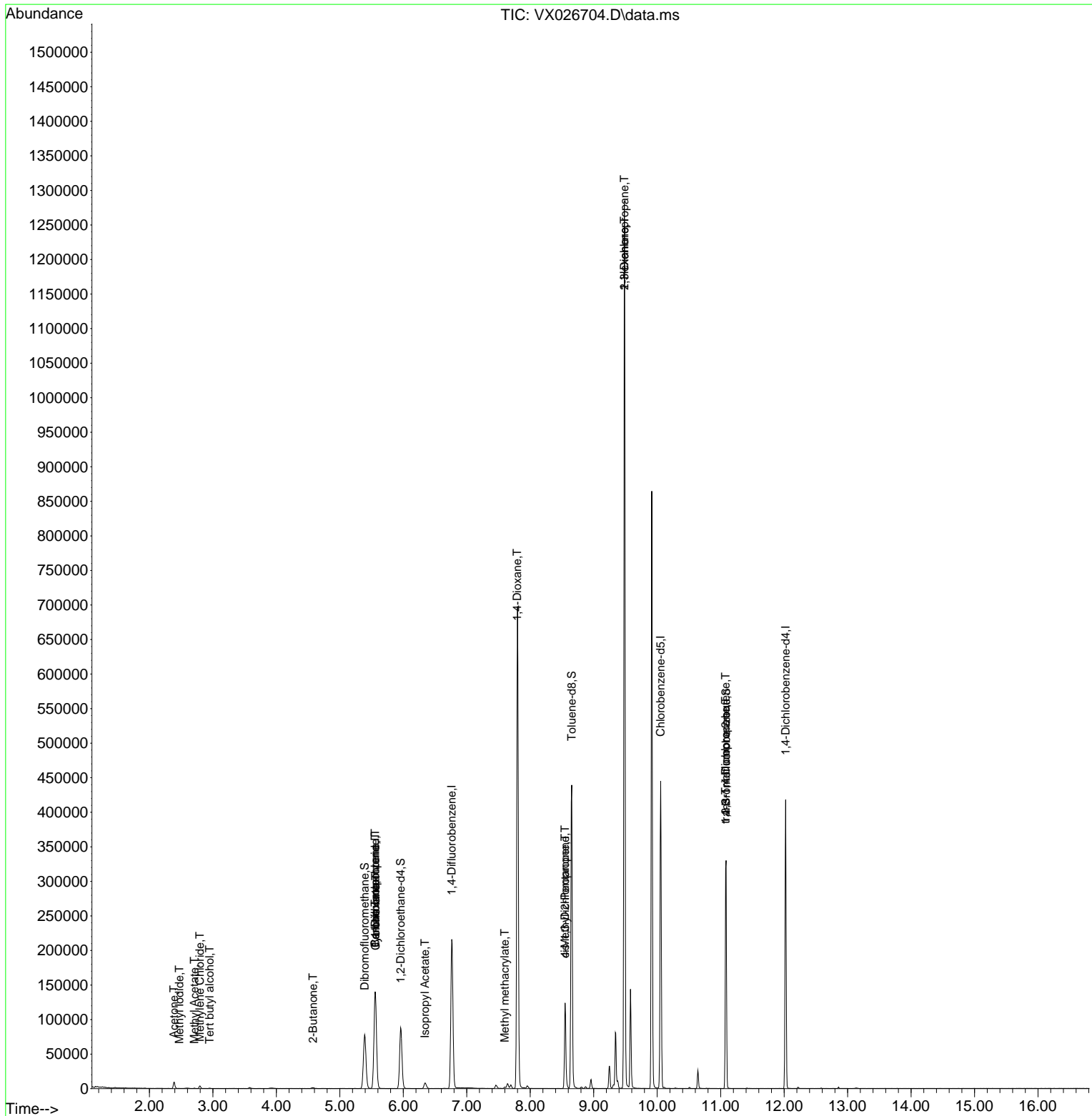
| Compound                      | R.T.   | QIon           | Response | Conc   | Units    | Dev(Min) |
|-------------------------------|--------|----------------|----------|--------|----------|----------|
| -----                         |        |                |          |        |          |          |
| Internal Standards            |        |                |          |        |          |          |
| 1) Pentafluorobenzene         | 5.556  | 168            | 132536   | 50.000 | ug/l     | 0.00     |
| 34) 1,4-Difluorobenzene       | 6.763  | 114            | 222830   | 50.000 | ug/l     | 0.00     |
| 63) Chlorobenzene-d5          | 10.055 | 117            | 199334   | 50.000 | ug/l     | 0.00     |
| 72) 1,4-Dichlorobenzene-d4    | 12.024 | 152            | 84046    | 50.000 | ug/l     | 0.00     |
| System Monitoring Compounds   |        |                |          |        |          |          |
| 33) 1,2-Dichloroethane-d4     | 5.958  | 65             | 84734    | 45.767 | ug/l     | 0.00     |
| Spiked Amount                 | 50.000 | Range 78 - 117 | Recovery | =      | 91.540%  |          |
| 35) Dibromofluoromethane      | 5.391  | 113            | 68835    | 47.836 | ug/l     | 0.00     |
| Spiked Amount                 | 50.000 | Range 75 - 124 | Recovery | =      | 95.680%  |          |
| 50) Toluene-d8                | 8.653  | 98             | 260679   | 50.272 | ug/l     | 0.00     |
| Spiked Amount                 | 50.000 | Range 92 - 112 | Recovery | =      | 100.540% |          |
| 62) 4-Bromofluorobenzene      | 11.085 | 95             | 92834    | 50.397 | ug/l     | 0.00     |
| Spiked Amount                 | 50.000 | Range 83 - 123 | Recovery | =      | 100.800% |          |
| Target Compounds              |        |                |          |        |          |          |
|                               |        |                |          |        |          | Qvalue   |
| 10) Methyl Iodide             | 2.471  | 142            | 242      | 4.586  | ug/l #   | 60       |
| 11) Tert butyl alcohol        | 2.946  | 59             | 339      | 1.316  | ug/l #   | 75       |
| 16) Acetone                   | 2.386  | 43             | 10852    | 11.494 | ug/l     | 97       |
| 18) Methyl Acetate            | 2.709  | 43             | 768      | 0.409  | ug/l #   | 84       |
| 20) Methylene Chloride        | 2.794  | 84             | 1749     | 1.121  | ug/l     | 96       |
| 25) 2-Butanone                | 4.574  | 43             | 2196     | 1.788  | ug/l     | 93       |
| 31) Cyclohexane               | 5.562  | 56             | 2619     | 0.959  | ug/l #   | 1        |
| 36) 1,1-Dichloropropene       | 5.556  | 75             | 10059    | 4.428  | ug/l #   | 51       |
| 38) Carbon Tetrachloride      | 5.556  | 117            | 13312    | 5.697  | ug/l #   | 17       |
| 43) Isopropyl Acetate         | 6.342  | 43             | 11509    | 3.101  | ug/l     | 99       |
| 48) Methyl methacrylate       | 7.598  | 41             | 3452     | 1.877  | ug/l #   | 16       |
| 49) 1,4-Dioxane               | 7.793  | 88             | 58       | 1.921  | ug/l #   | 1        |
| 51) 4-Methyl-2-Pentanone      | 8.549  | 43             | 42898    | 19.484 | ug/l #   | 51       |
| 54) cis-1,3-Dichloropropene   | 8.549  | 75             | 19965    | 8.327  | ug/l #   | 58       |
| 57) 1,3-Dichloropropane       | 9.482  | 76             | 11046    | 4.240  | ug/l #   | 43       |
| 59) 2-Hexanone                | 9.482  | 43             | 153768   | 91.252 | ug/l #   | 52       |
| 76) 1,2,3-Trichloropropane    | 11.079 | 75             | 45873    | 24.789 | ug/l #   | 40       |
| 81) trans-1,4-Dichloro-2-b... | 11.079 | 75             | 45873    | 75.392 | ug/l #   | 3        |
| -----                         |        |                |          |        |          |          |

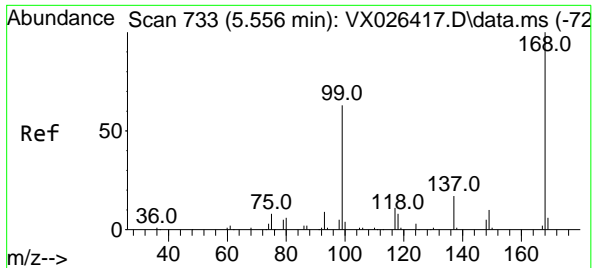
(#) = qualifier out of range (m) = manual integration (+) = signals summed

Data Path : Z:\voasrv\HPCHEM1\MSVOA\_X\Data\VX020122\  
 Data File : VX026704.D  
 Acq On : 01 Feb 2022 14:11  
 Operator : JC/MD  
 Sample : N1325-20  
 Misc : 5.0mL/MSVOA\_X/WATER  
 ALS Vial : 9 Sample Multiplier: 1

Instrument :  
 MSVOA\_X  
 ClientSampleId :  
 TEX-3

Quant Time: Feb 02 04:35:29 2022  
 Quant Method : Z:\voasrv\HPCHEM1\MSVOA\_X\Method\82X011122W.M  
 Quant Title : SW846 8260  
 QLast Update : Tue Jan 11 14:45:13 2022  
 Response via : Initial Calibration

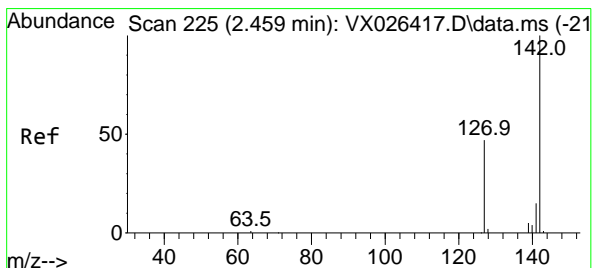
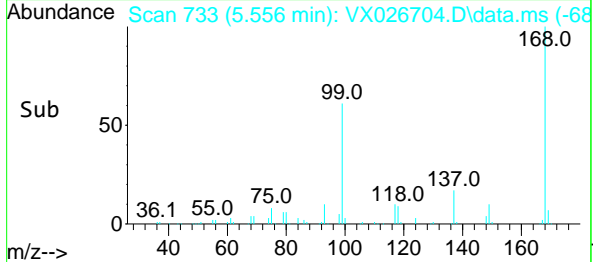
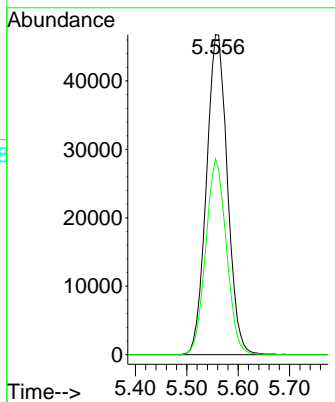
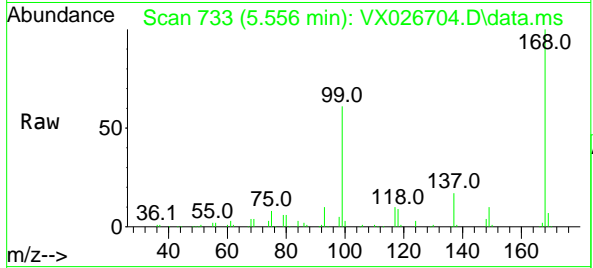




#1  
 Pentafluorobenzene  
 Concen: 50.000 ug/l  
 RT: 5.556 min Scan# 71  
 Delta R.T. -0.000 min  
 Lab File: VX026704.D  
 Acq: 01 Feb 2022 14:11

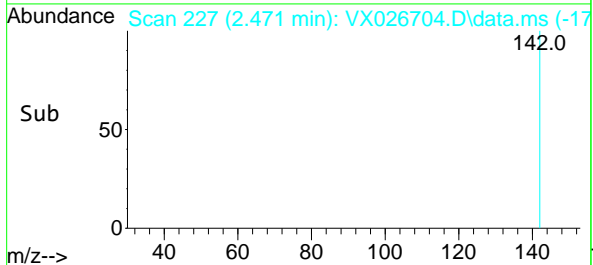
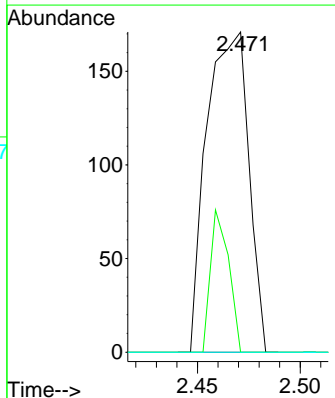
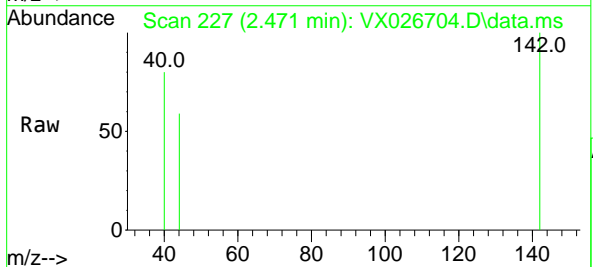
Instrument :  
 MSVOA\_X  
 ClientSampleId :  
 TEX-3

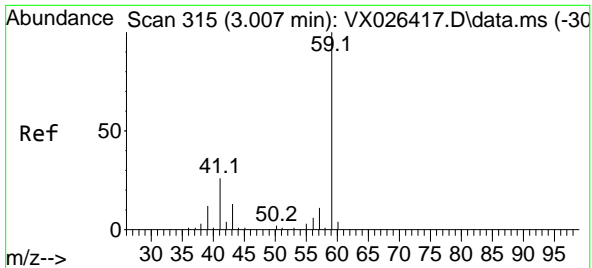
Tgt Ion:168 Resp: 132536  
 Ion Ratio Lower Upper  
 168 100  
 99 61.2 50.3 75.5



#10  
 Methyl Iodide  
 Concen: 4.586 ug/l  
 RT: 2.471 min Scan# 227  
 Delta R.T. 0.012 min  
 Lab File: VX026704.D  
 Acq: 01 Feb 2022 14:11

Tgt Ion:142 Resp: 242  
 Ion Ratio Lower Upper  
 142 100  
 127 19.4 38.1 57.1#  
 141 0.0 11.2 16.8#

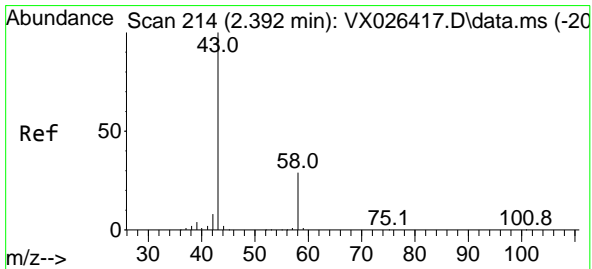
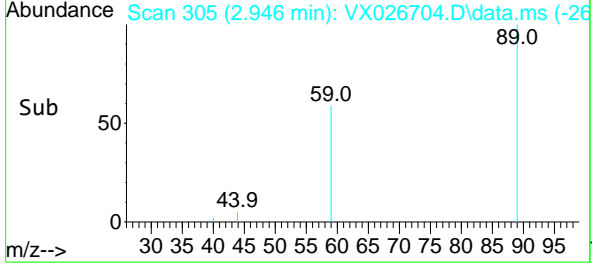
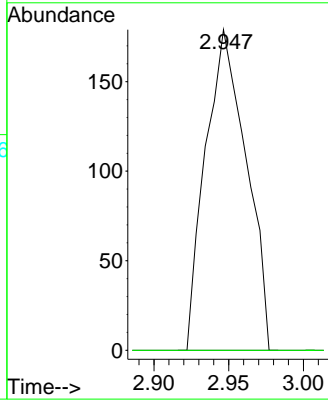
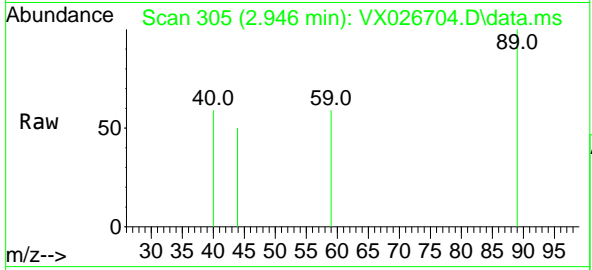




#11  
 Tert butyl alcohol  
 Concen: 1.316 ug/l  
 RT: 2.946 min Scan# 305  
 Delta R.T. -0.061 min  
 Lab File: VX026704.D  
 Acq: 01 Feb 2022 14:11

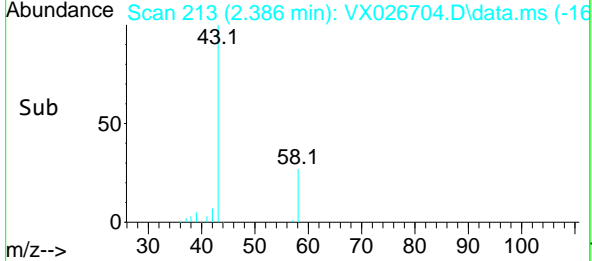
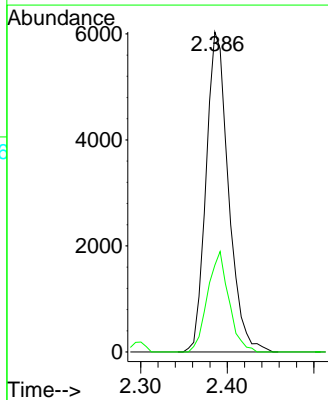
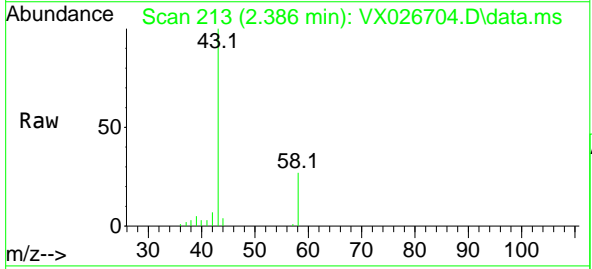
Instrument : MSVOA\_X  
 ClientSampleId : TEX-3

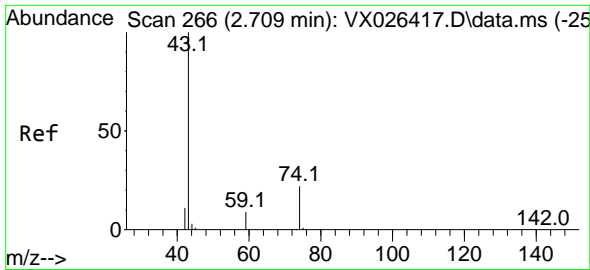
Tgt Ion: 59 Resp: 339  
 Ion Ratio Lower Upper  
 59 100  
 57 0.0 7.2 10.8#



#16  
 Acetone  
 Concen: 11.494 ug/l  
 RT: 2.386 min Scan# 213  
 Delta R.T. -0.006 min  
 Lab File: VX026704.D  
 Acq: 01 Feb 2022 14:11

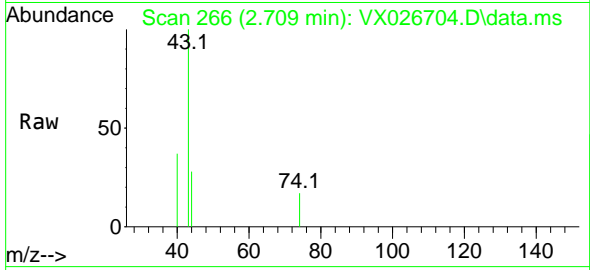
Tgt Ion: 43 Resp: 10852  
 Ion Ratio Lower Upper  
 43 100  
 58 27.1 23.0 34.6



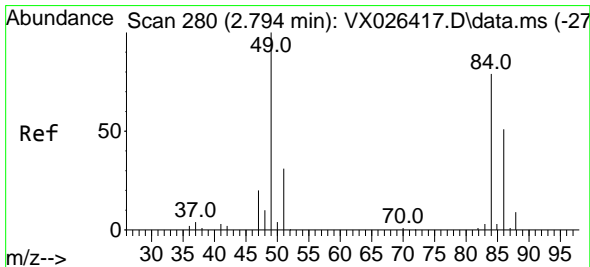
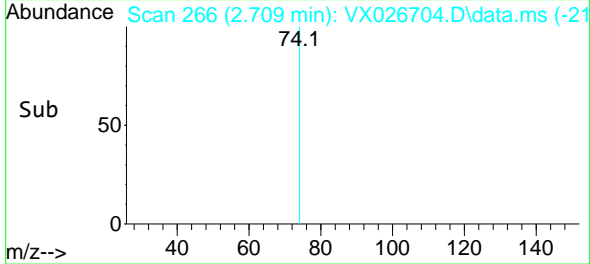
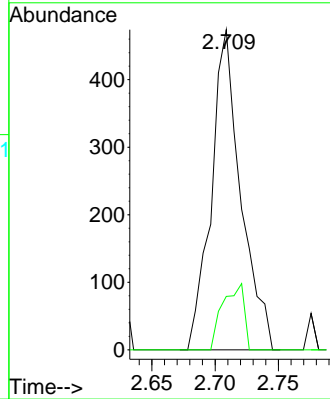


#18  
 Methyl Acetate  
 Concen: 0.409 ug/l  
 RT: 2.709 min Scan# 20  
 Delta R.T. -0.000 min  
 Lab File: VX026704.D  
 Acq: 01 Feb 2022 14:11

Instrument : MSVOA\_X  
 ClientSampleId : TEX-3

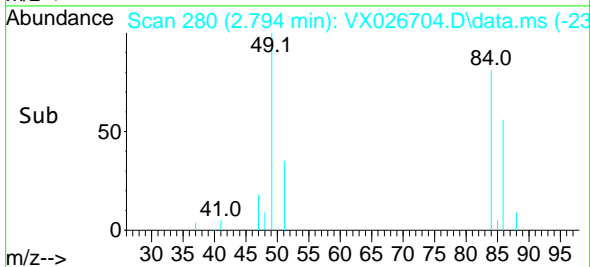
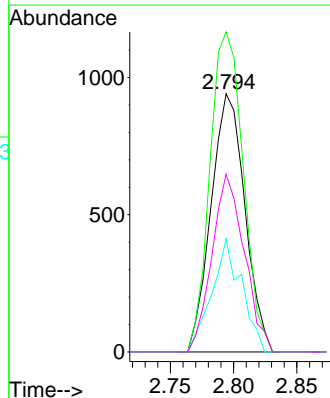
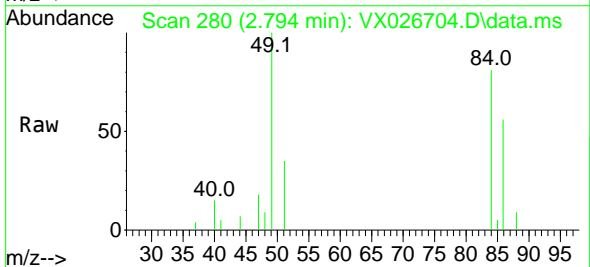


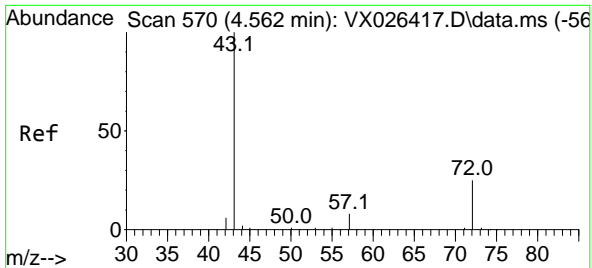
Tgt Ion: 43 Resp: 768  
 Ion Ratio Lower Upper  
 43 100  
 74 15.0 18.3 27.5#



#20  
 Methylene Chloride  
 Concen: 1.121 ug/l  
 RT: 2.794 min Scan# 280  
 Delta R.T. -0.000 min  
 Lab File: VX026704.D  
 Acq: 01 Feb 2022 14:11

Tgt Ion: 84 Resp: 1749  
 Ion Ratio Lower Upper  
 84 100  
 49 123.9 101.5 152.3  
 51 43.9 31.2 46.8  
 86 68.9 51.3 76.9

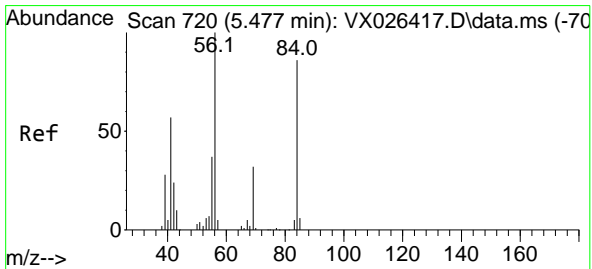
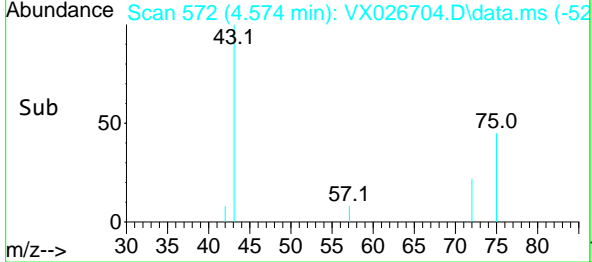
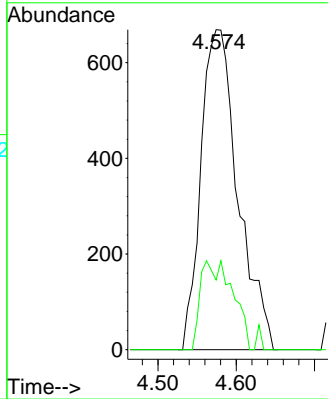
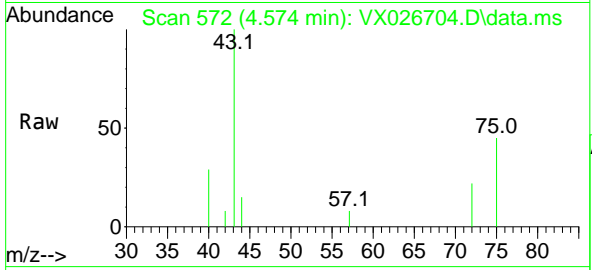




#25  
 2-Butanone  
 Concen: 1.788 ug/l  
 RT: 4.574 min Scan# 51  
 Delta R.T. 0.012 min  
 Lab File: VX026704.D  
 Acq: 01 Feb 2022 14:11

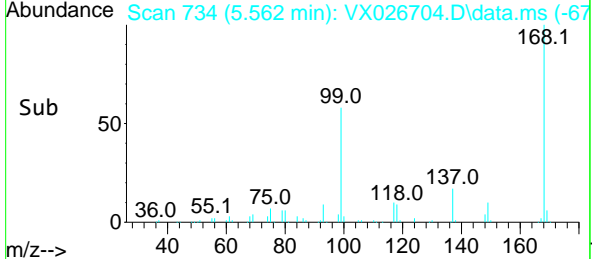
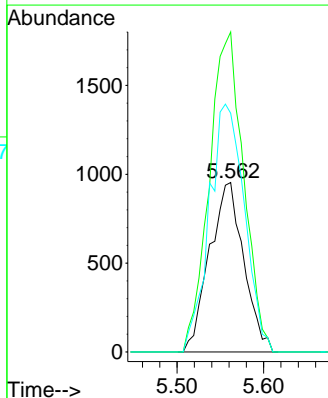
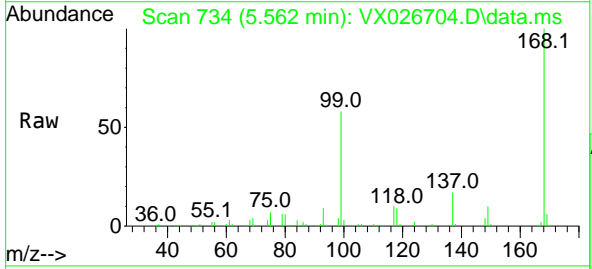
Instrument :  
 MSVOA\_X  
 ClientSampleId :  
 TEX-3

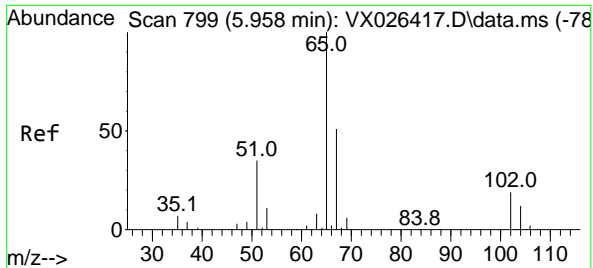
Tgt Ion: 43 Resp: 2196  
 Ion Ratio Lower Upper  
 43 100  
 72 21.8 20.4 30.6



#31  
 Cyclohexane  
 Concen: 0.959 ug/l  
 RT: 5.562 min Scan# 734  
 Delta R.T. 0.085 min  
 Lab File: VX026704.D  
 Acq: 01 Feb 2022 14:11

Tgt Ion: 56 Resp: 2619  
 Ion Ratio Lower Upper  
 56 100  
 69 188.8 25.8 38.6#  
 84 140.9 68.9 103.3#

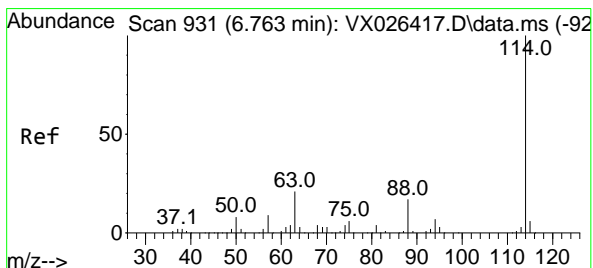
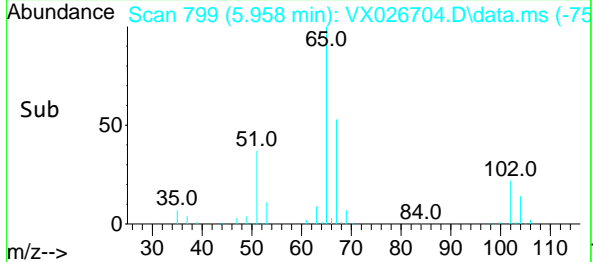
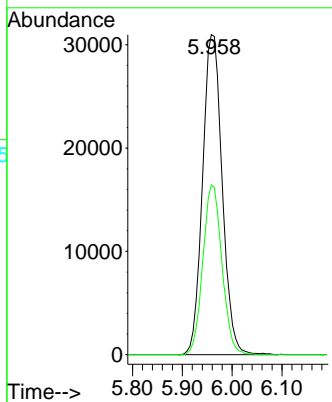
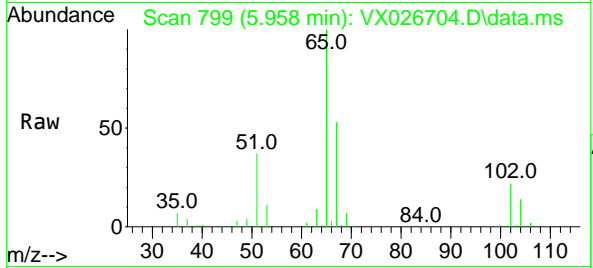




#33  
 1,2-Dichloroethane-d4  
 Concen: 45.767 ug/l  
 RT: 5.958 min Scan# 799  
 Delta R.T. -0.000 min  
 Lab File: VX026704.D  
 Acq: 01 Feb 2022 14:11

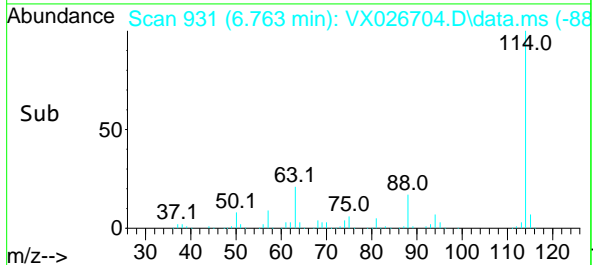
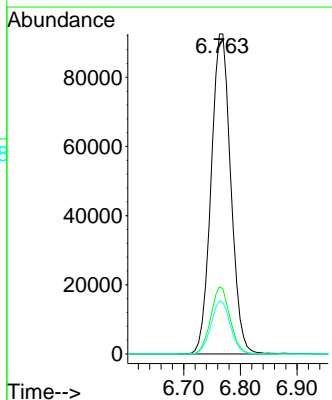
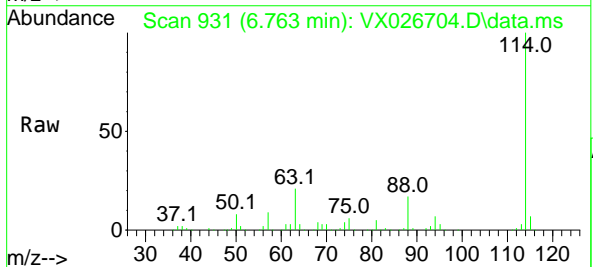
Instrument :  
 MSVOA\_X  
 ClientSampleId :  
 TEX-3

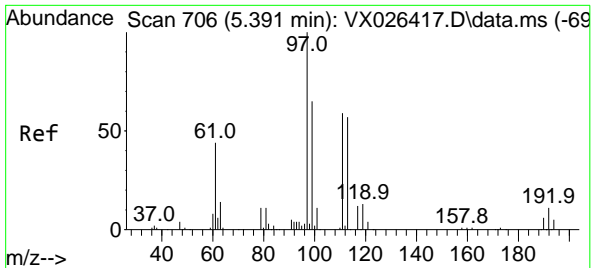
Tgt Ion: 65 Resp: 84734  
 Ion Ratio Lower Upper  
 65 100  
 67 51.5 0.0 100.8



#34  
 1,4-Difluorobenzene  
 Concen: 50.000 ug/l  
 RT: 6.763 min Scan# 931  
 Delta R.T. -0.000 min  
 Lab File: VX026704.D  
 Acq: 01 Feb 2022 14:11

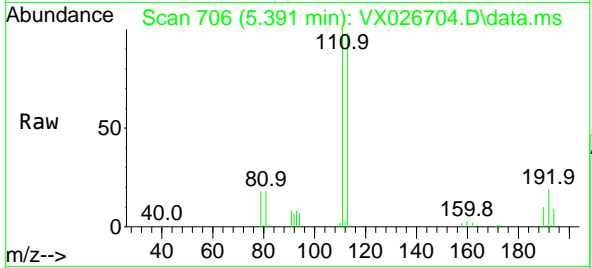
Tgt Ion: 114 Resp: 222830  
 Ion Ratio Lower Upper  
 114 100  
 63 21.0 0.0 42.8  
 88 16.6 0.0 33.0





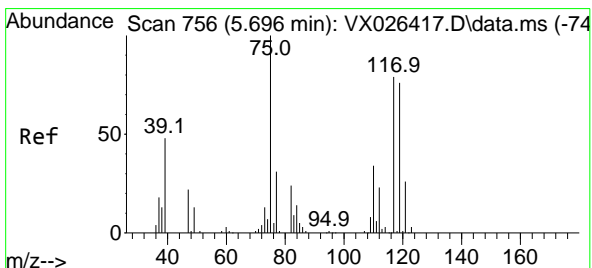
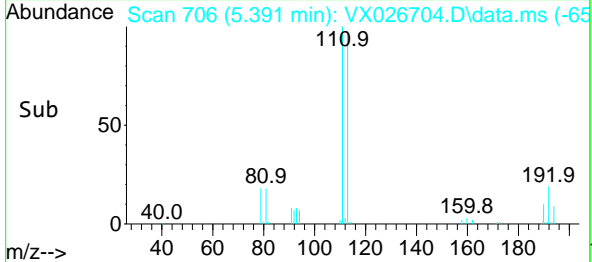
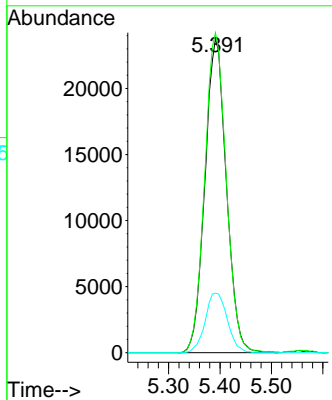
#35  
 Dibromofluoromethane  
 Concen: 47.836 ug/l  
 RT: 5.391 min Scan# 706  
 Delta R.T. -0.000 min  
 Lab File: VX026704.D  
 Acq: 01 Feb 2022 14:11

Instrument : MSVOA\_X  
 ClientSampleId : TEX-3



Tgt Ion: 113 Resp: 68835

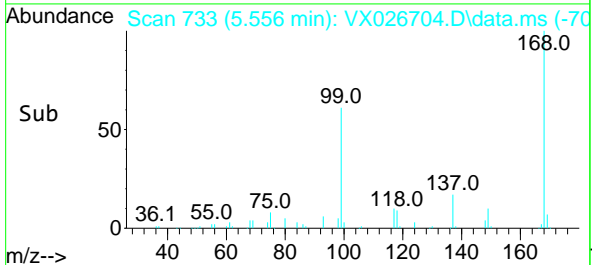
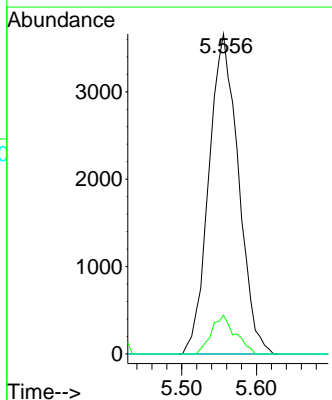
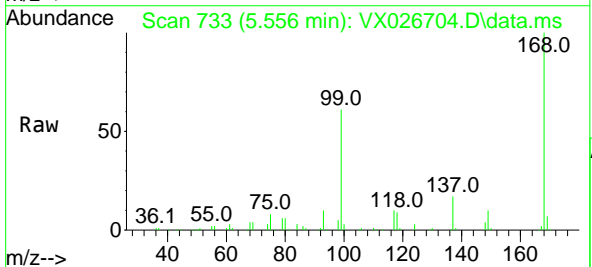
| Ion | Ratio | Lower | Upper |
|-----|-------|-------|-------|
| 113 | 100   |       |       |
| 111 | 102.4 | 81.2  | 121.8 |
| 192 | 19.6  | 15.0  | 22.4  |



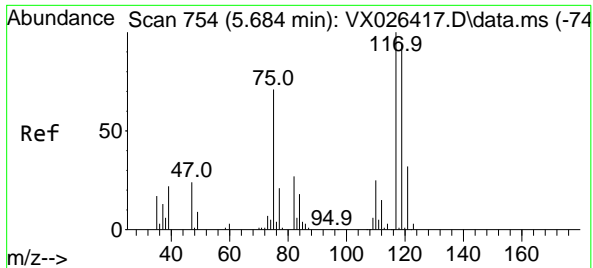
#36  
 1,1-Dichloropropene  
 Concen: 4.428 ug/l  
 RT: 5.556 min Scan# 733  
 Delta R.T. -0.140 min  
 Lab File: VX026704.D  
 Acq: 01 Feb 2022 14:11

Tgt Ion: 75 Resp: 10059

| Ion | Ratio | Lower | Upper |
|-----|-------|-------|-------|
| 75  | 100   |       |       |
| 110 | 9.7   | 17.2  | 51.6# |
| 77  | 0.0   | 24.6  | 36.8# |

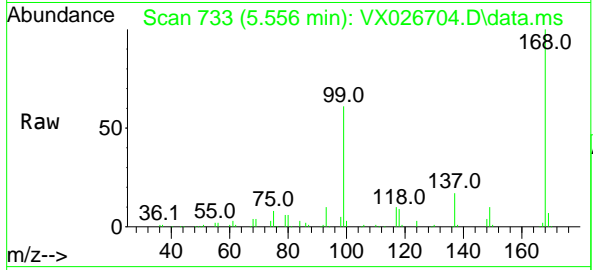




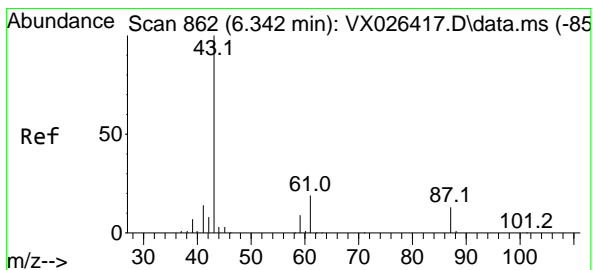
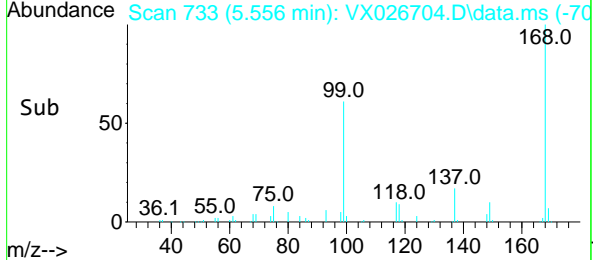
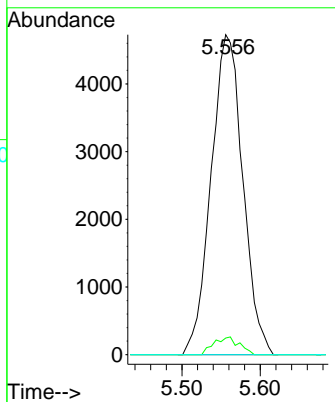


#38  
 Carbon Tetrachloride  
 Concen: 5.697 ug/l  
 RT: 5.556 min Scan# 711  
 Delta R.T. -0.128 min  
 Lab File: VX026704.D  
 Acq: 01 Feb 2022 14:11

Instrument : MSVOA\_X  
 ClientSampleId : TEX-3

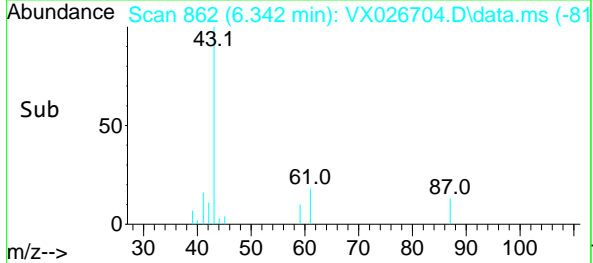
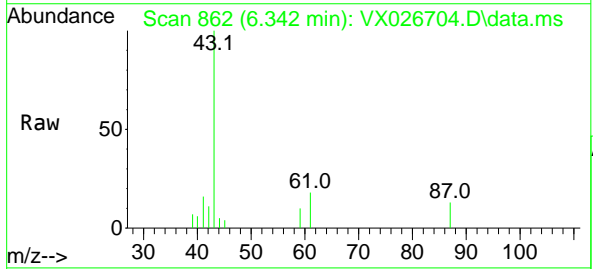
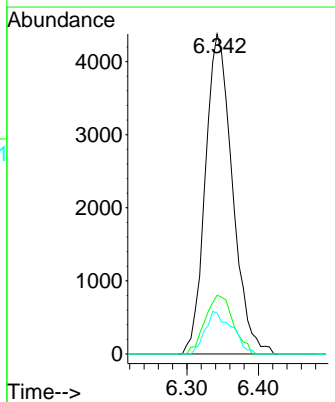


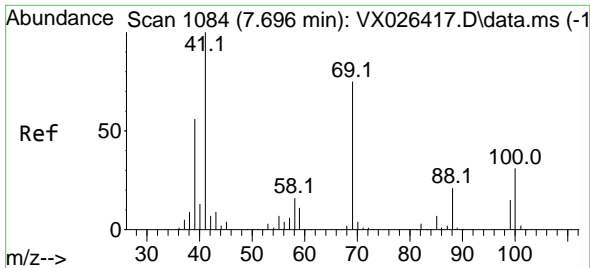
Tgt Ion:117 Resp: 13312  
 Ion Ratio Lower Upper  
 117 100  
 119 5.2 74.7 112.1#  
 121 0.0 25.4 38.0#



#43  
 Isopropyl Acetate  
 Concen: 3.101 ug/l  
 RT: 6.342 min Scan# 862  
 Delta R.T. -0.000 min  
 Lab File: VX026704.D  
 Acq: 01 Feb 2022 14:11

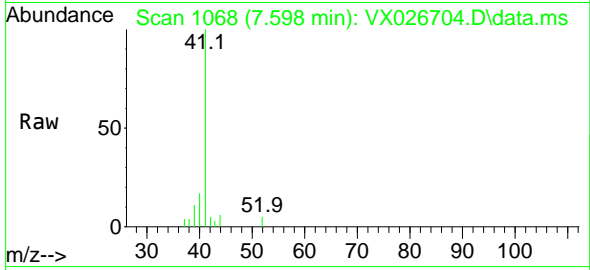
Tgt Ion: 43 Resp: 11509  
 Ion Ratio Lower Upper  
 43 100  
 61 19.0 15.4 23.0  
 87 13.1 10.2 15.2



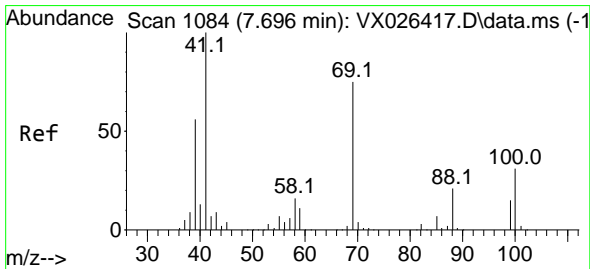
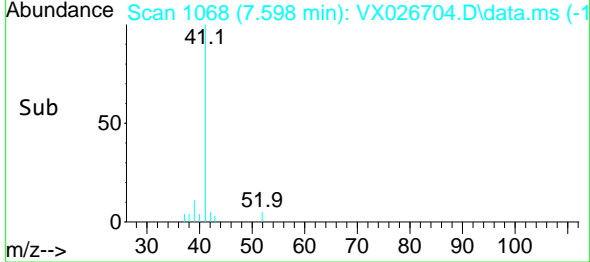
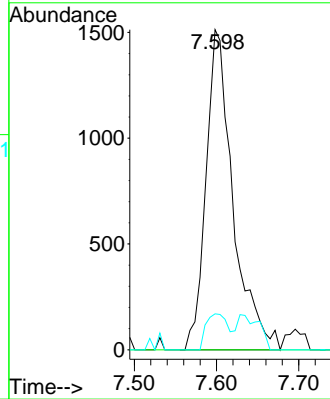


#48  
 Methyl methacrylate  
 Concen: 1.877 ug/l  
 RT: 7.598 min Scan# 1068  
 Delta R.T. -0.098 min  
 Lab File: VX026704.D  
 Acq: 01 Feb 2022 14:11

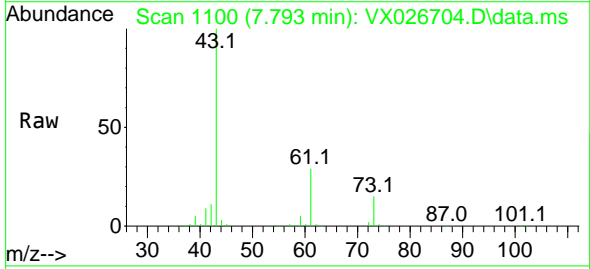
Instrument : MSVOA\_X  
 ClientSampleId : TEX-3



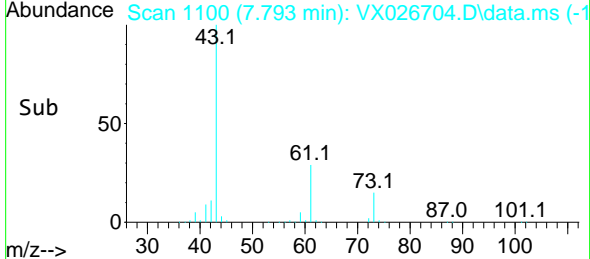
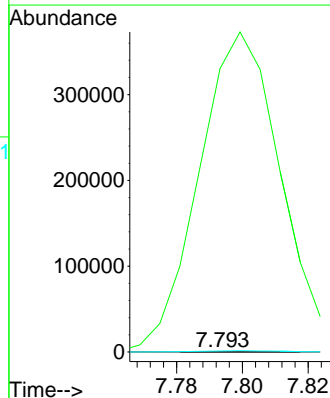
Tgt Ion: 41 Resp: 3452  
 Ion Ratio Lower Upper  
 41 100  
 69 0.0 62.2 93.4#  
 39 0.0 45.4 68.0#

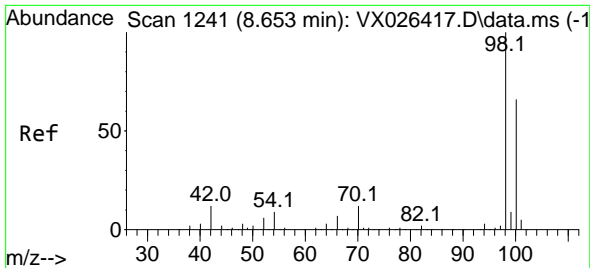


#49  
 1,4-Dioxane  
 Concen: 1.921 ug/l  
 RT: 7.793 min Scan# 1100  
 Delta R.T. 0.098 min  
 Lab File: VX026704.D  
 Acq: 01 Feb 2022 14:11



Tgt Ion: 88 Resp: 58  
 Ion Ratio Lower Upper  
 88 100  
 43 1121287.9 29.9 44.9#  
 58 4322.4 57.8 86.6#

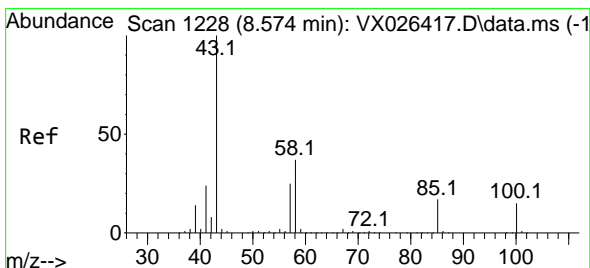
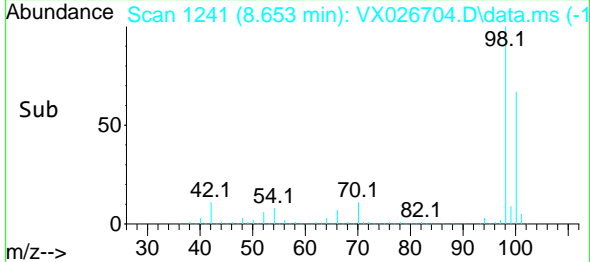
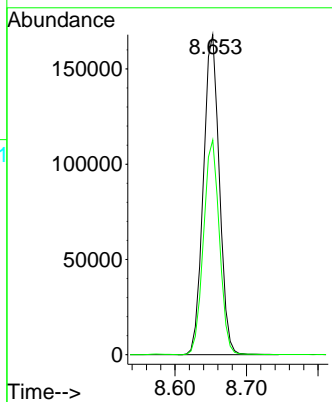
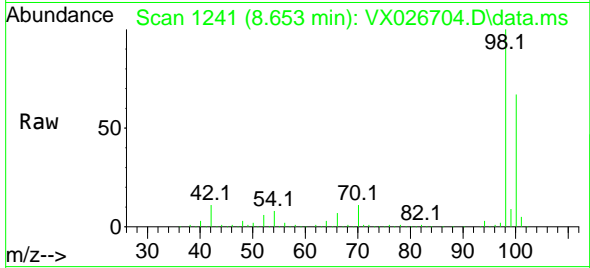




#50  
 Toluene-d8  
 Concen: 50.272 ug/l  
 RT: 8.653 min Scan# 11  
 Delta R.T. -0.000 min  
 Lab File: VX026704.D  
 Acq: 01 Feb 2022 14:11

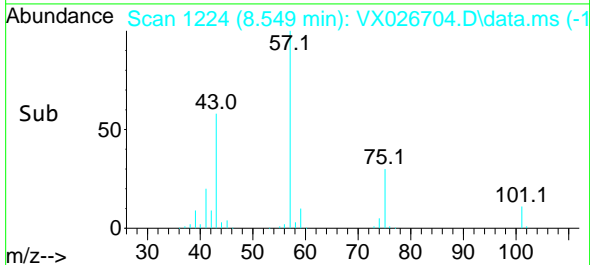
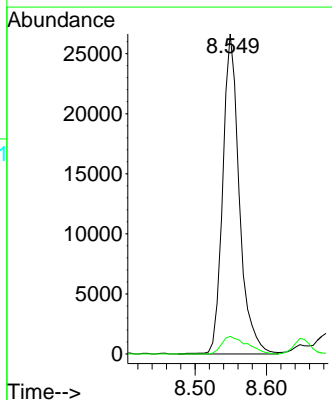
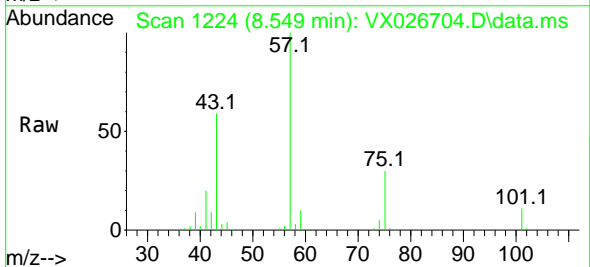
Instrument :  
 MSVOA\_X  
 ClientSampleId :  
 TEX-3

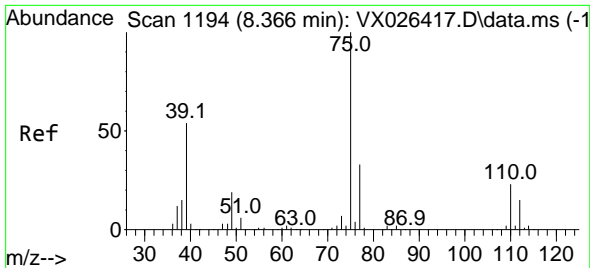
Tgt Ion: 98 Resp: 260679  
 Ion Ratio Lower Upper  
 98 100  
 100 66.9 53.2 79.8



#51  
 4-Methyl-2-Pentanone  
 Concen: 19.484 ug/l  
 RT: 8.549 min Scan# 1224  
 Delta R.T. -0.024 min  
 Lab File: VX026704.D  
 Acq: 01 Feb 2022 14:11

Tgt Ion: 43 Resp: 42898  
 Ion Ratio Lower Upper  
 43 100  
 58 8.3 30.5 45.7#

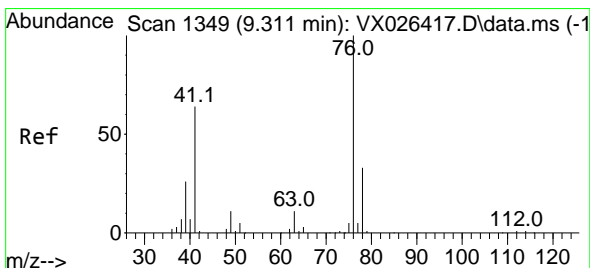
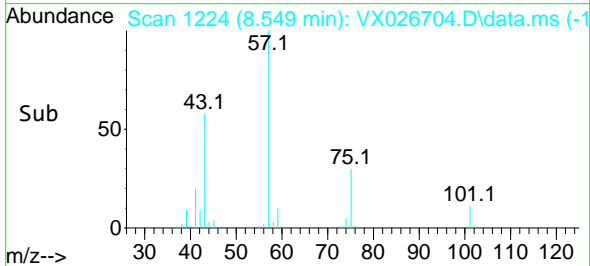
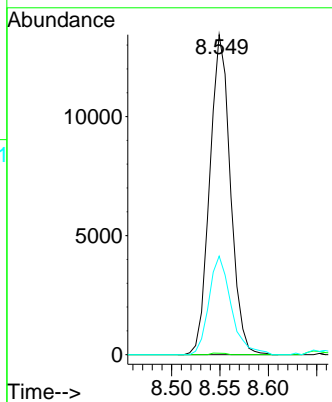
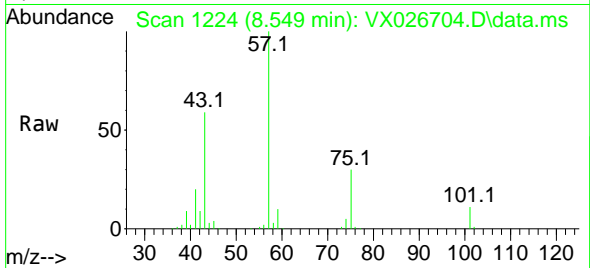




#54  
 cis-1,3-Dichloropropene  
 Concen: 8.327 ug/l  
 RT: 8.549 min Scan# 1194  
 Delta R.T. 0.183 min  
 Lab File: VX026704.D  
 Acq: 01 Feb 2022 14:11

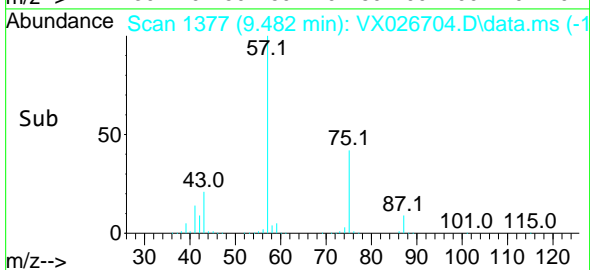
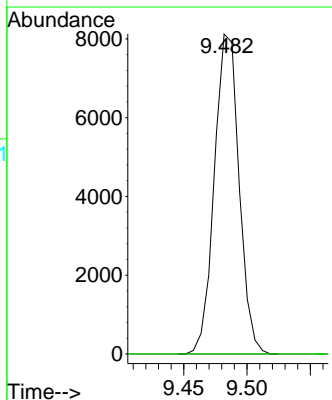
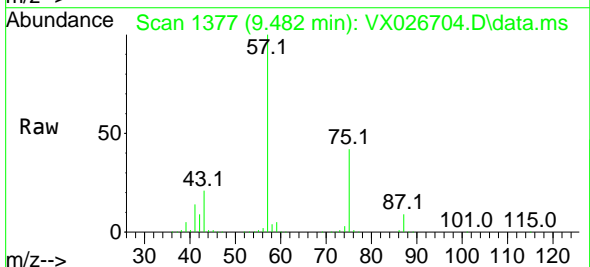
Instrument :  
 MSVOA\_X  
 ClientSampleId :  
 TEX-3

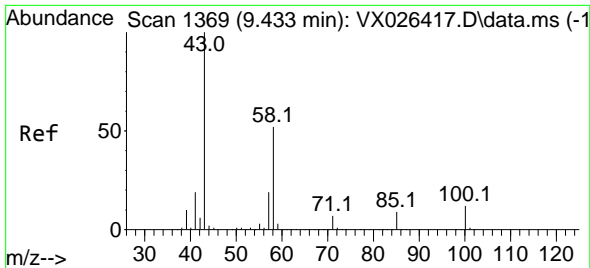
Tgt Ion: 75 Resp: 19965  
 Ion Ratio Lower Upper  
 75 100  
 77 0.4 26.2 39.2#  
 39 30.8 43.5 65.3#



#57  
 1,3-Dichloropropane  
 Concen: 4.240 ug/l  
 RT: 9.482 min Scan# 1377  
 Delta R.T. 0.171 min  
 Lab File: VX026704.D  
 Acq: 01 Feb 2022 14:11

Tgt Ion: 76 Resp: 11046  
 Ion Ratio Lower Upper  
 76 100  
 78 0.0 25.7 38.5#

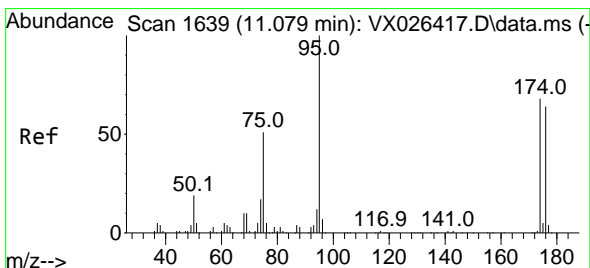
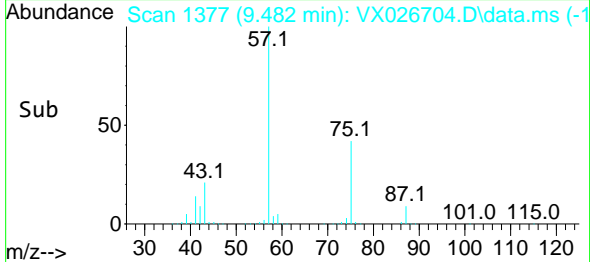
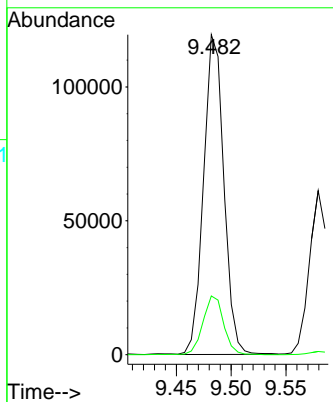
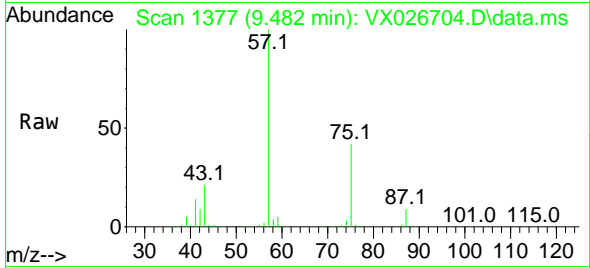




#59  
 2-Hexanone  
 Concen: 91.252 ug/l  
 RT: 9.482 min Scan# 11  
 Delta R.T. 0.049 min  
 Lab File: VX026704.D  
 Acq: 01 Feb 2022 14:11

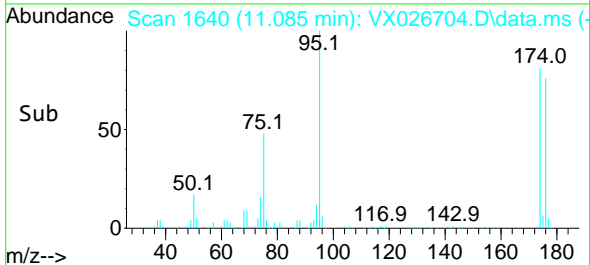
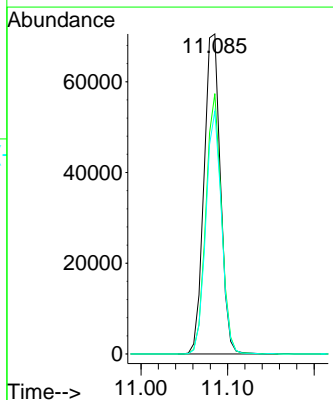
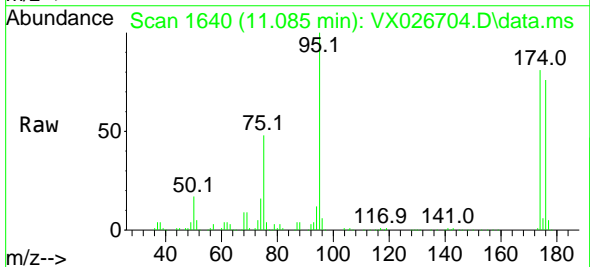
Instrument :  
 MSVOA\_X  
 ClientSampleId :  
 TEX-3

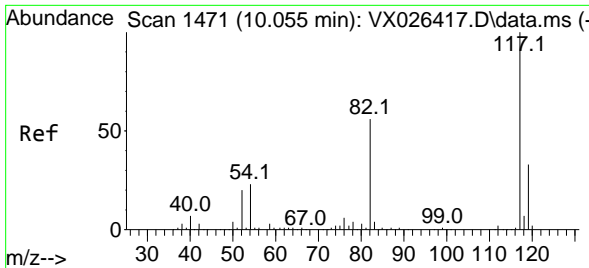
Tgt Ion: 43 Resp: 153768  
 Ion Ratio Lower Upper  
 43 100  
 58 18.7 26.4 79.2#



#62  
 4-Bromofluorobenzene  
 Concen: 50.397 ug/l  
 RT: 11.085 min Scan# 1640  
 Delta R.T. 0.006 min  
 Lab File: VX026704.D  
 Acq: 01 Feb 2022 14:11

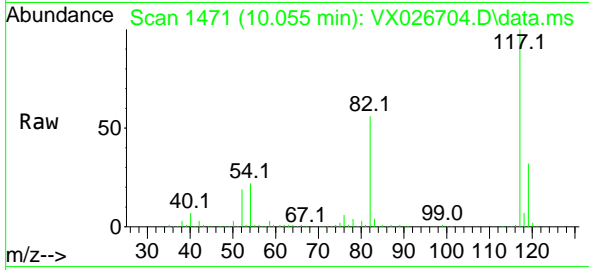
Tgt Ion: 95 Resp: 92834  
 Ion Ratio Lower Upper  
 95 100  
 174 76.9 0.0 148.6  
 176 72.7 0.0 141.4



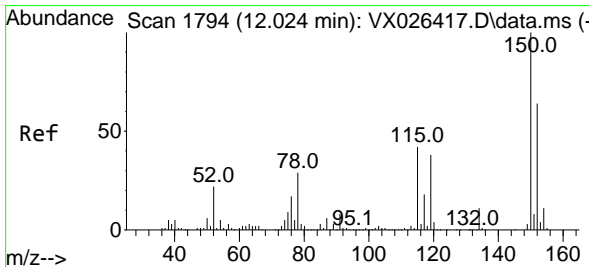
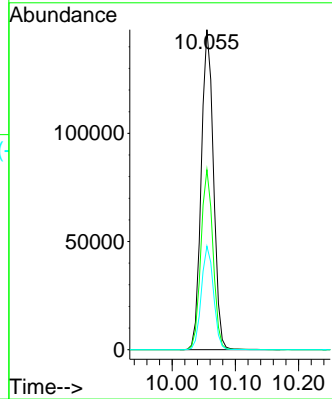
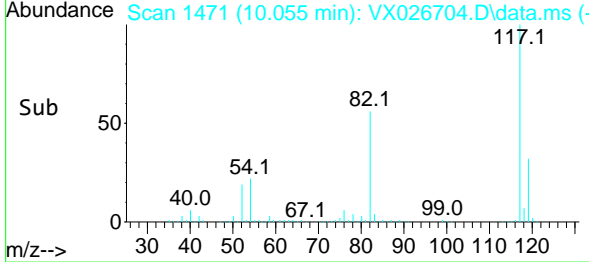


#63  
 Chlorobenzene-d5  
 Concen: 50.000 ug/l  
 RT: 10.055 min Scan# 1471  
 Delta R.T. -0.000 min  
 Lab File: VX026704.D  
 Acq: 01 Feb 2022 14:11

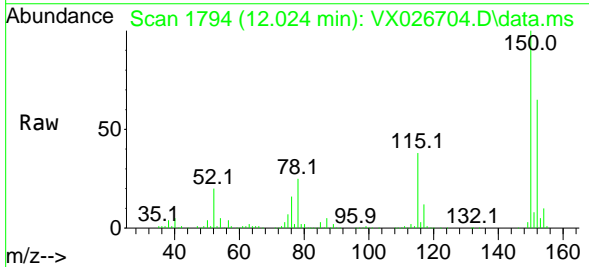
Instrument :  
 MSVOA\_X  
 ClientSampleId :  
 TEX-3



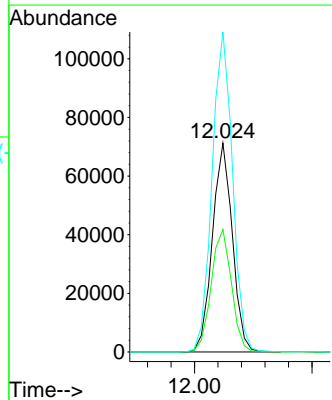
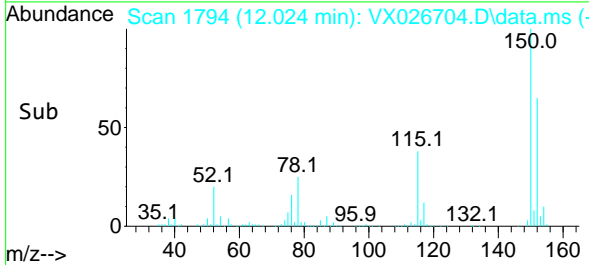
Tgt Ion:117 Resp: 199334  
 Ion Ratio Lower Upper  
 117 100  
 82 56.2 45.2 67.8  
 119 32.4 26.2 39.2

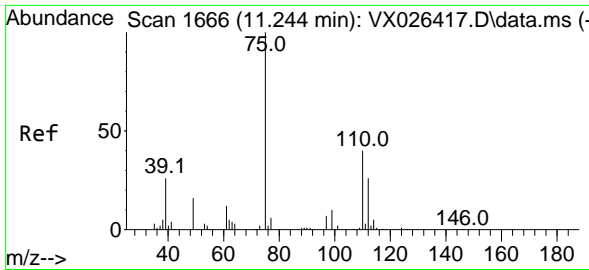


#72  
 1,4-Dichlorobenzene-d4  
 Concen: 50.000 ug/l  
 RT: 12.024 min Scan# 1794  
 Delta R.T. -0.000 min  
 Lab File: VX026704.D  
 Acq: 01 Feb 2022 14:11



Tgt Ion:152 Resp: 84046  
 Ion Ratio Lower Upper  
 152 100  
 115 59.4 44.2 132.6  
 150 156.6 0.0 348.2

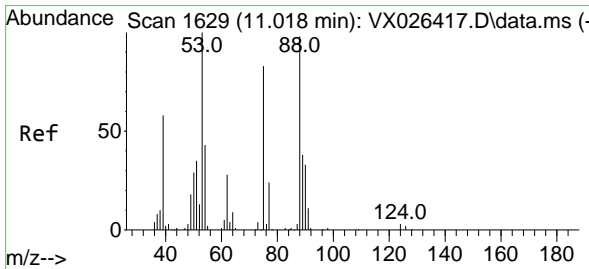
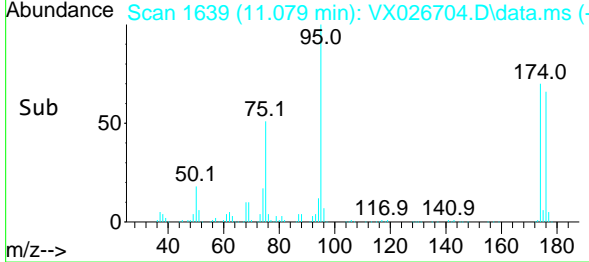
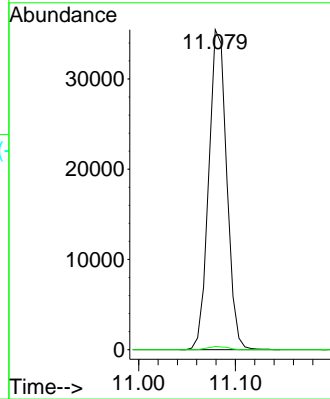
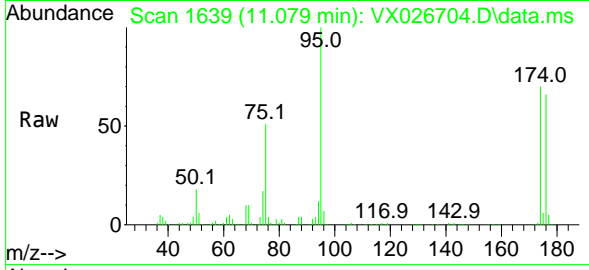




#76  
 1,2,3-Trichloropropane  
 Concen: 24.789 ug/l  
 RT: 11.079 min Scan# 1639  
 Delta R.T. -0.165 min  
 Lab File: VX026704.D  
 Acq: 01 Feb 2022 14:11

Instrument :  
 MSVOA\_X  
 ClientSampleId :  
 TEX-3

Tgt Ion: 75 Resp: 45873  
 Ion Ratio Lower Upper  
 75 100  
 77 1.1 18.3 54.8#



#81  
 trans-1,4-Dichloro-2-butene  
 Concen: 75.392 ug/l  
 RT: 11.079 min Scan# 1639  
 Delta R.T. 0.061 min  
 Lab File: VX026704.D  
 Acq: 01 Feb 2022 14:11

Tgt Ion: 75 Resp: 45873  
 Ion Ratio Lower Upper  
 75 100  
 53 0.0 94.0 141.0#  
 89 0.0 37.0 55.4#

