

Data Path : Z:\voasrv\HPCHEM1\MSVOA_X\Data\VX020122\
 Data File : VX026708.D
 Acq On : 01 Feb 2022 15:43
 Operator : JC/MD
 Sample : PB142403ZHE#01
 Misc : 5.0mL/MSVOA_X/WATER
 ALS Vial : 13 Sample Multiplier: 1

Instrument :
 MSVOA_X
 ClientSampleId :
 PB142403ZHE#01

Quant Time: Feb 02 04:36:12 2022
 Quant Method : Z:\voasrv\HPCHEM1\MSVOA_X\Method\82X011122W.M
 Quant Title : SW846 8260
 QLast Update : Tue Jan 11 14:45:13 2022
 Response via : Initial Calibration

Compound	R.T.	QIon	Response	Conc	Units	Dev(Min)

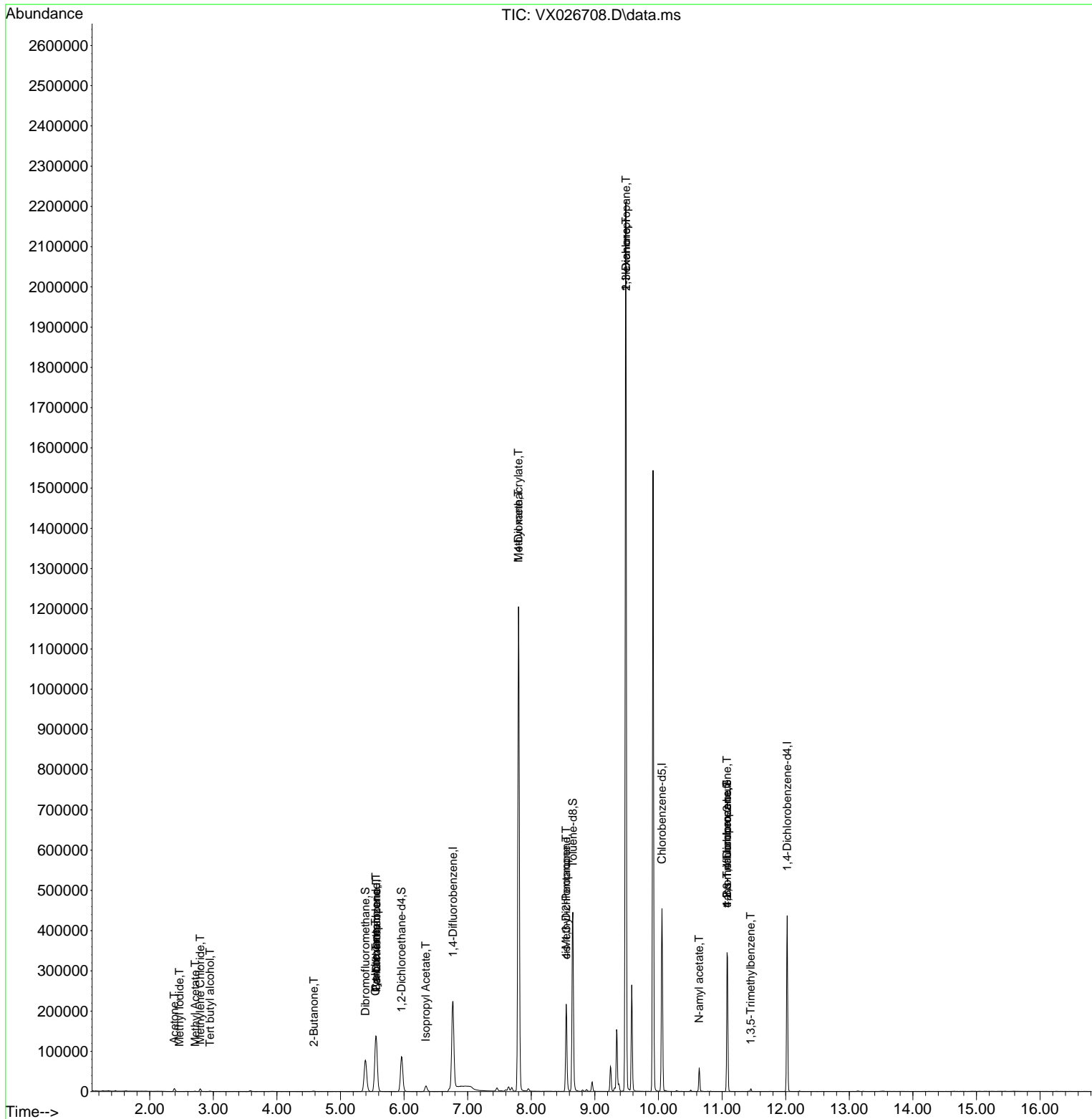
Internal Standards						
1) Pentafluorobenzene	5.562	168	132353	50.000	ug/l	0.00
34) 1,4-Difluorobenzene	6.769	114	225476	50.000	ug/l	0.00
63) Chlorobenzene-d5	10.055	117	201732	50.000	ug/l	0.00
72) 1,4-Dichlorobenzene-d4	12.024	152	87839	50.000	ug/l	0.00
System Monitoring Compounds						
33) 1,2-Dichloroethane-d4	5.958	65	83758	45.302	ug/l	0.00
Spiked Amount	50.000	Range 78 - 117	Recovery	=	90.600%	
35) Dibromofluoromethane	5.391	113	68932	47.342	ug/l	0.00
Spiked Amount	50.000	Range 75 - 124	Recovery	=	94.680%	
50) Toluene-d8	8.653	98	266334	50.759	ug/l	0.00
Spiked Amount	50.000	Range 92 - 112	Recovery	=	101.520%	
62) 4-Bromofluorobenzene	11.079	95	96285	51.657	ug/l	0.00
Spiked Amount	50.000	Range 83 - 123	Recovery	=	103.320%	
Target Compounds						
						Qvalue
10) Methyl Iodide	2.465	142	78	4.491	ug/l #	37
11) Tert butyl alcohol	2.946	59	710	2.761	ug/l #	75
16) Acetone	2.386	43	8546	9.064	ug/l	99
18) Methyl Acetate	2.715	43	1319	0.704	ug/l #	84
20) Methylene Chloride	2.794	84	2741	1.760	ug/l	97
25) 2-Butanone	4.580	43	1678	1.369	ug/l #	77
31) Cyclohexane	5.550	56	2628	0.964	ug/l #	1
36) 1,1-Dichloropropene	5.562	75	10195	4.435	ug/l #	50
38) Carbon Tetrachloride	5.556	117	13810	5.841	ug/l #	17
43) Isopropyl Acetate	6.342	43	19060	5.075	ug/l	99
48) Methyl methacrylate	7.799	41	99398	53.400	ug/l #	44
49) 1,4-Dioxane	7.799	88	175	5.729	ug/l #	1
51) 4-Methyl-2-Pentanone	8.549	43	72141	32.382	ug/l #	50
54) cis-1,3-Dichloropropene	8.549	75	34439	14.195	ug/l #	55
57) 1,3-Dichloropropane	9.488	76	19776	7.503	ug/l #	43
59) 2-Hexanone	9.488	43	270358	158.558	ug/l #	51
74) N-amyl acetate	10.640	43	13852	4.983	ug/l #	53
76) 1,2,3-Trichloropropane	11.079	75	47148	24.378	ug/l #	40
80) 1,3,5-Trimethylbenzene	11.451	105	3095	0.521	ug/l	98
81) trans-1,4-Dichloro-2-b...	11.079	75	47148	74.224	ug/l #	3

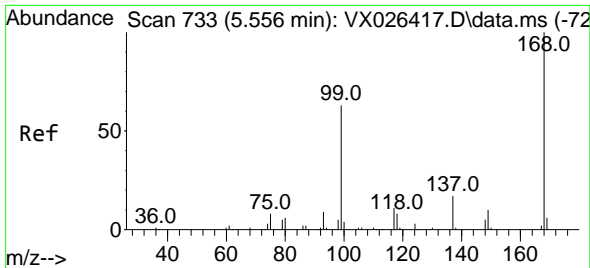
(#) = qualifier out of range (m) = manual integration (+) = signals summed

Data Path : Z:\voasrv\HPCHEM1\MSVOA_X\Data\VX020122\
 Data File : VX026708.D
 Acq On : 01 Feb 2022 15:43
 Operator : JC/MD
 Sample : PB142403ZHE#01
 Misc : 5.0mL/MSVOA_X/WATER
 ALS Vial : 13 Sample Multiplier: 1

Instrument :
 MSVOA_X
 ClientSampleId :
 PB142403ZHE#01

Quant Time: Feb 02 04:36:12 2022
 Quant Method : Z:\voasrv\HPCHEM1\MSVOA_X\Method\82X011122W.M
 Quant Title : SW846 8260
 QLast Update : Tue Jan 11 14:45:13 2022
 Response via : Initial Calibration

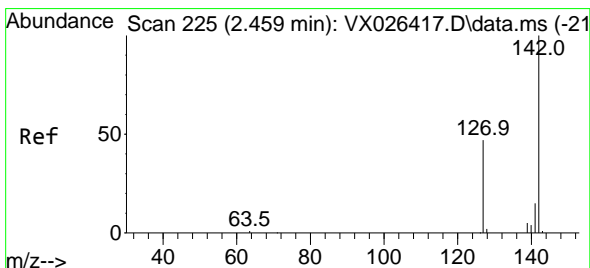
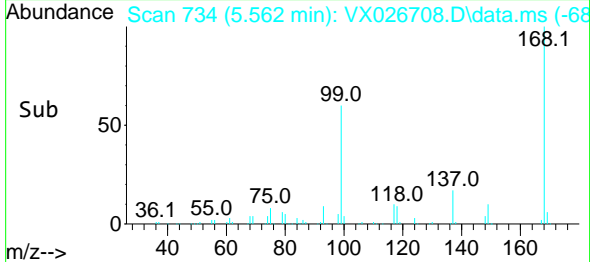
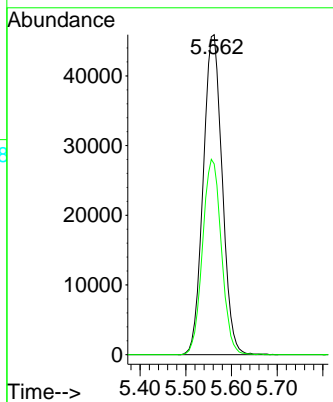
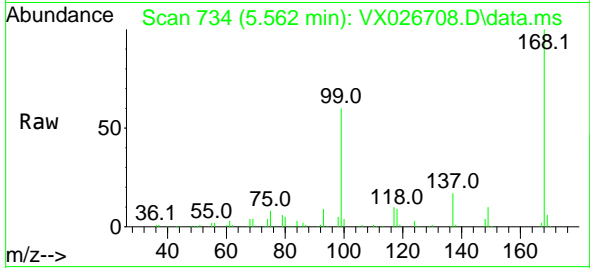




#1
 Pentafluorobenzene
 Concen: 50.000 ug/l
 RT: 5.562 min Scan# 71
 Delta R.T. 0.006 min
 Lab File: VX026708.D
 Acq: 01 Feb 2022 15:43

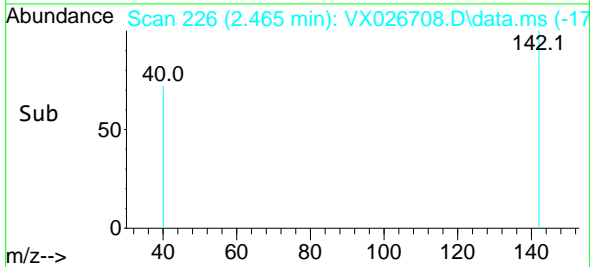
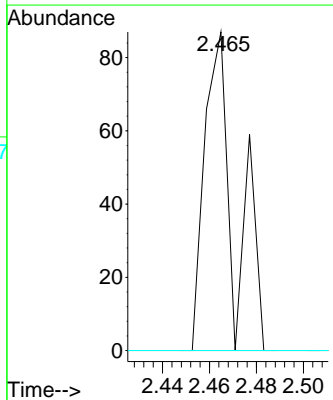
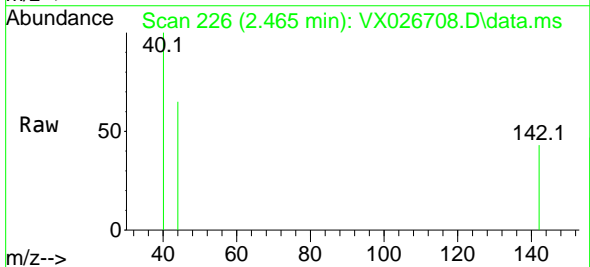
Instrument : MSVOA_X
 ClientSampleId : PB142403ZHE#01

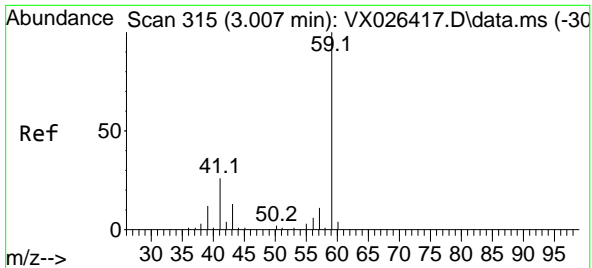
Tgt Ion:168 Resp: 132353
 Ion Ratio Lower Upper
 168 100
 99 59.6 50.3 75.5



#10
 Methyl Iodide
 Concen: 4.491 ug/l
 RT: 2.465 min Scan# 226
 Delta R.T. 0.006 min
 Lab File: VX026708.D
 Acq: 01 Feb 2022 15:43

Tgt Ion:142 Resp: 78
 Ion Ratio Lower Upper
 142 100
 127 0.0 38.1 57.1#
 141 0.0 11.2 16.8#

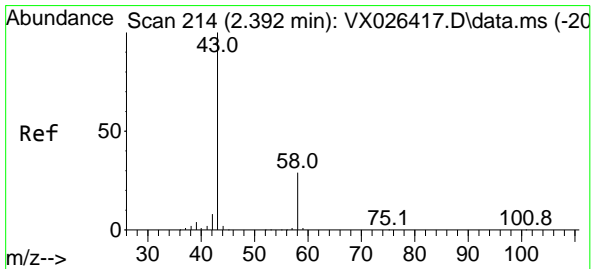
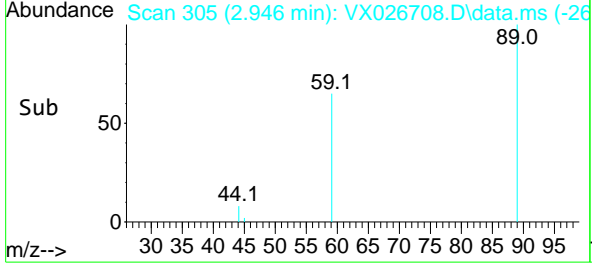
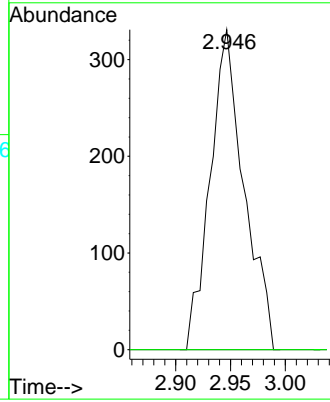
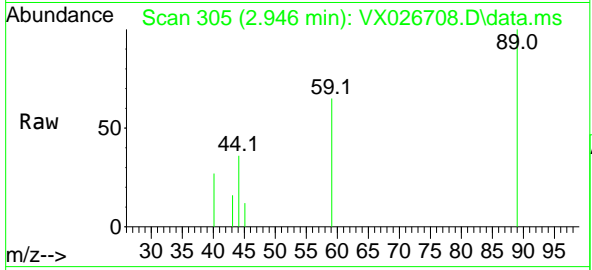




#11
 Tert butyl alcohol
 Concen: 2.761 ug/l
 RT: 2.946 min Scan# 30
 Delta R.T. -0.061 min
 Lab File: VX026708.D
 Acq: 01 Feb 2022 15:43

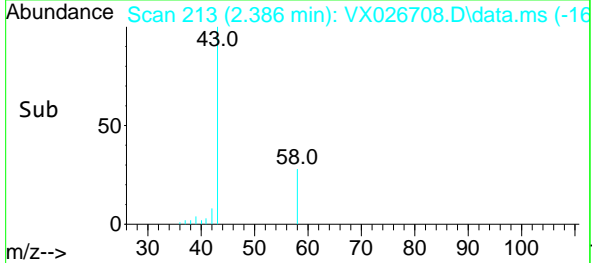
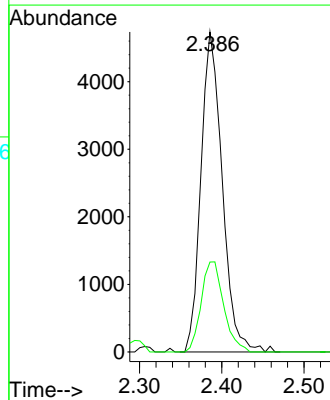
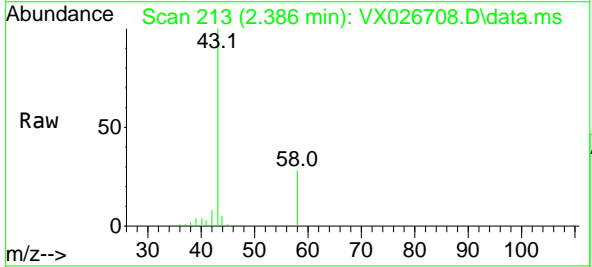
Instrument : MSVOA_X
 ClientSampleId : PB142403ZHE#01

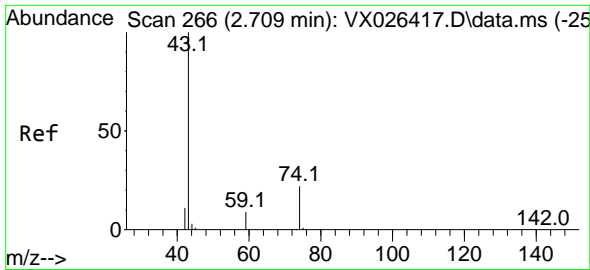
Tgt Ion: 59 Resp: 710
 Ion Ratio Lower Upper
 59 100
 57 0.0 7.2 10.8#



#16
 Acetone
 Concen: 9.064 ug/l
 RT: 2.386 min Scan# 213
 Delta R.T. -0.006 min
 Lab File: VX026708.D
 Acq: 01 Feb 2022 15:43

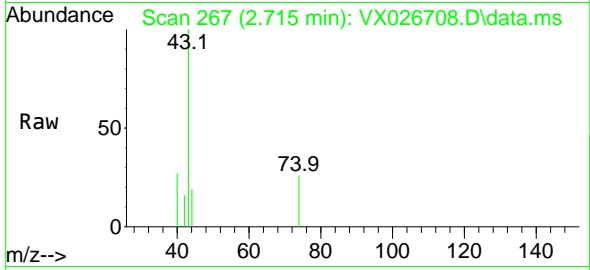
Tgt Ion: 43 Resp: 8546
 Ion Ratio Lower Upper
 43 100
 58 28.1 23.0 34.6



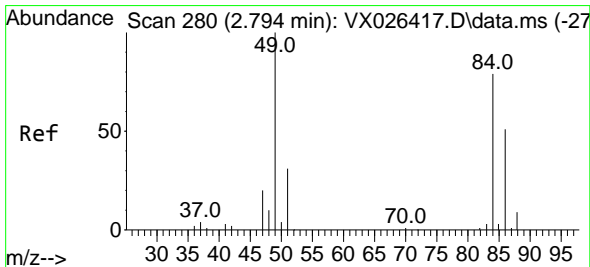
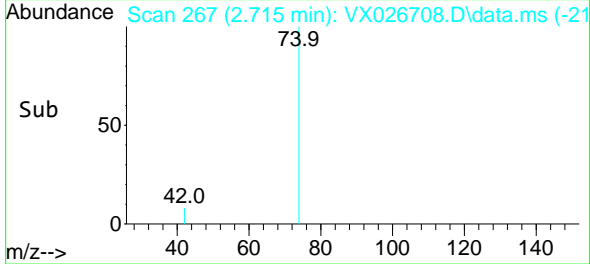
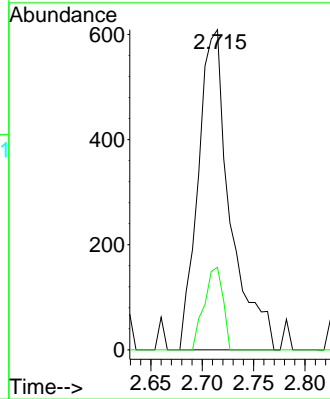


#18
 Methyl Acetate
 Concen: 0.704 ug/l
 RT: 2.715 min Scan# 20
 Delta R.T. 0.006 min
 Lab File: VX026708.D
 Acq: 01 Feb 2022 15:43

Instrument : MSVOA_X
 ClientSampleId : PB142403ZHE#01

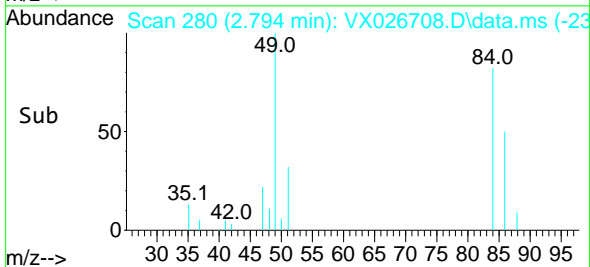
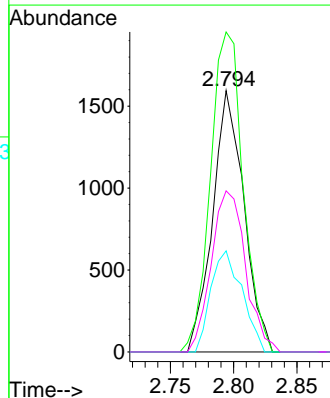
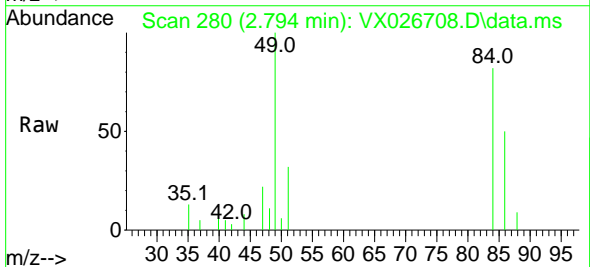


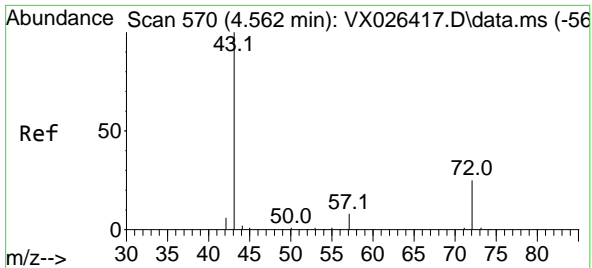
Tgt Ion: 43 Resp: 1319
 Ion Ratio Lower Upper
 43 100
 74 15.1 18.3 27.5#



#20
 Methylene Chloride
 Concen: 1.760 ug/l
 RT: 2.794 min Scan# 280
 Delta R.T. -0.000 min
 Lab File: VX026708.D
 Acq: 01 Feb 2022 15:43

Tgt Ion: 84 Resp: 2741
 Ion Ratio Lower Upper
 84 100
 49 122.4 101.5 152.3
 51 38.7 31.2 46.8
 86 61.6 51.3 76.9

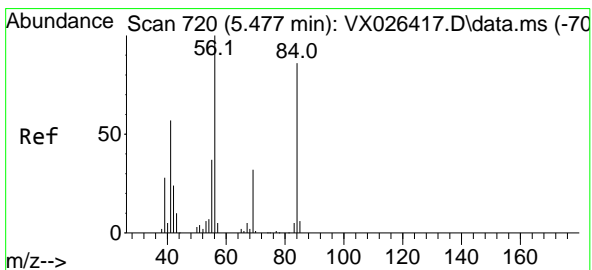
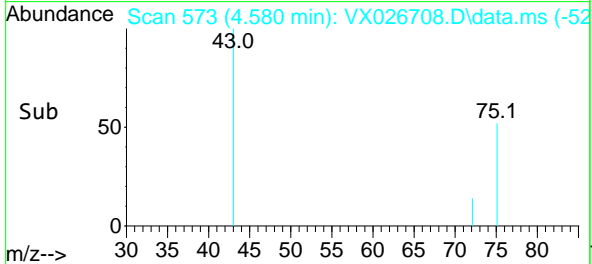
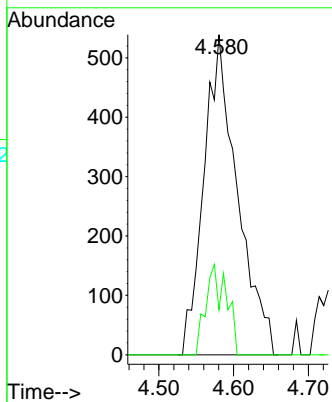
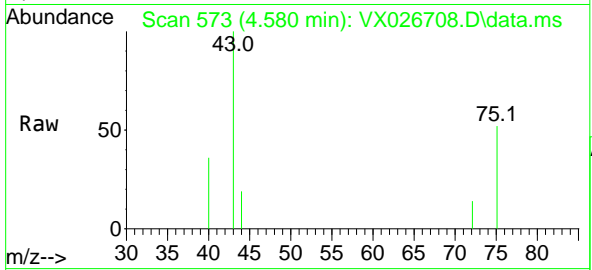




#25
 2-Butanone
 Concen: 1.369 ug/l
 RT: 4.580 min Scan# 51
 Delta R.T. 0.018 min
 Lab File: VX026708.D
 Acq: 01 Feb 2022 15:43

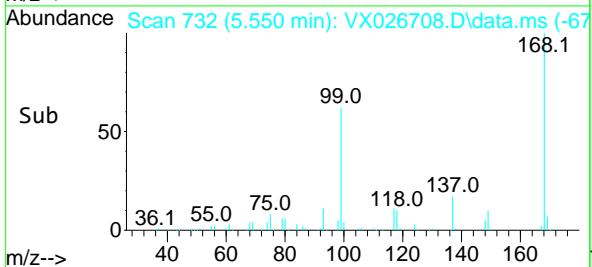
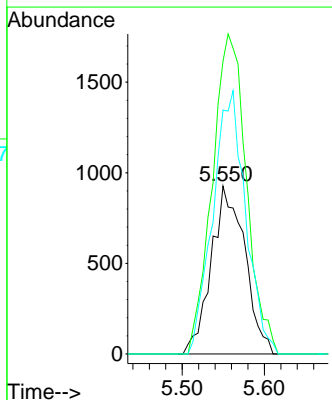
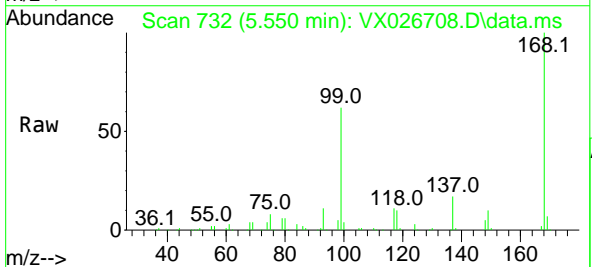
Instrument : MSVOA_X
 ClientSampleId : PB142403ZHE#01

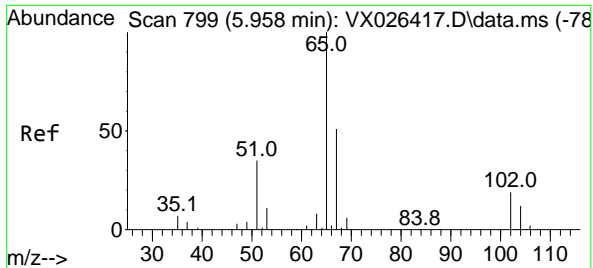
Tgt Ion: 43 Resp: 1678
 Ion Ratio Lower Upper
 43 100
 72 14.1 20.4 30.6#



#31
 Cyclohexane
 Concen: 0.964 ug/l
 RT: 5.550 min Scan# 732
 Delta R.T. 0.073 min
 Lab File: VX026708.D
 Acq: 01 Feb 2022 15:43

Tgt Ion: 56 Resp: 2628
 Ion Ratio Lower Upper
 56 100
 69 174.4 25.8 38.6#
 84 145.4 68.9 103.3#

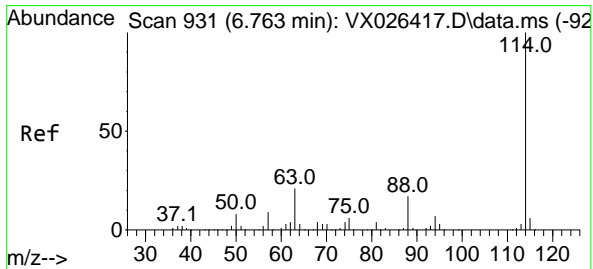
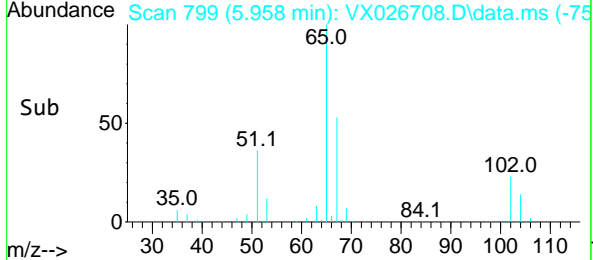
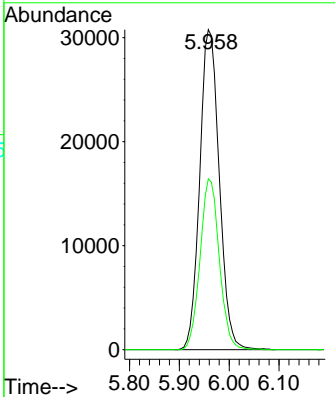
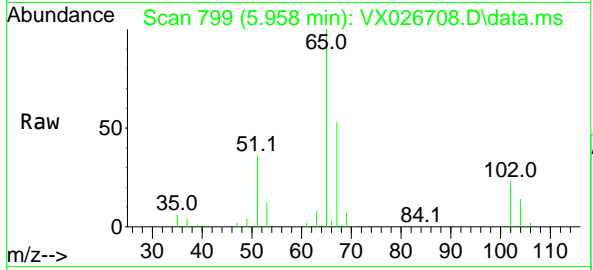




#33
 1,2-Dichloroethane-d4
 Concen: 45.302 ug/l
 RT: 5.958 min Scan# 799
 Delta R.T. -0.000 min
 Lab File: VX026708.D
 Acq: 01 Feb 2022 15:43

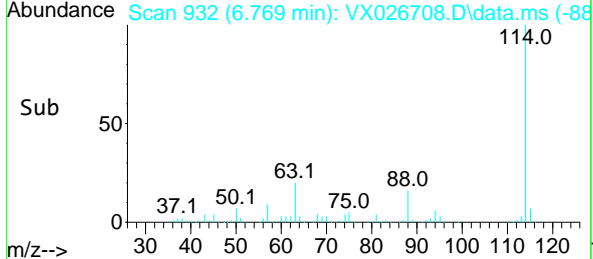
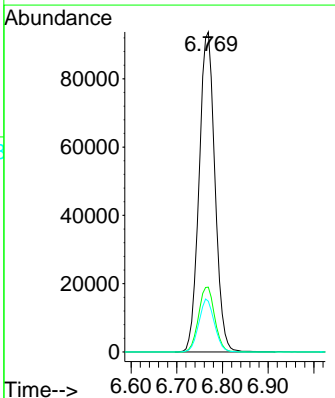
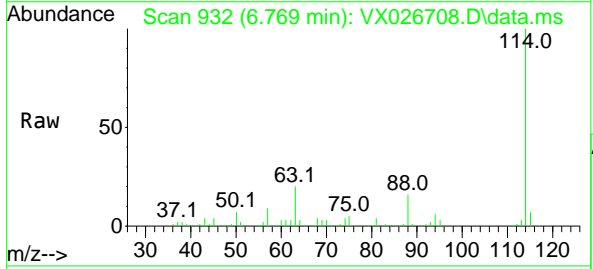
Instrument : MSVOA_X
 ClientSampleId : PB142403ZHE#01

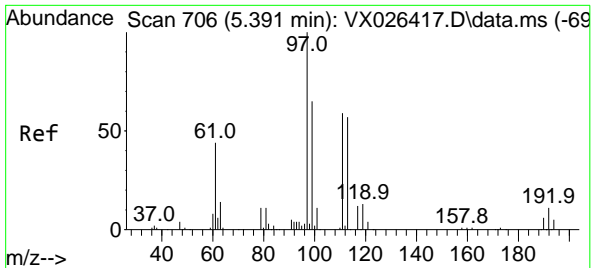
Tgt Ion: 65 Resp: 83758
 Ion Ratio Lower Upper
 65 100
 67 52.4 0.0 100.8



#34
 1,4-Difluorobenzene
 Concen: 50.000 ug/l
 RT: 6.769 min Scan# 932
 Delta R.T. 0.006 min
 Lab File: VX026708.D
 Acq: 01 Feb 2022 15:43

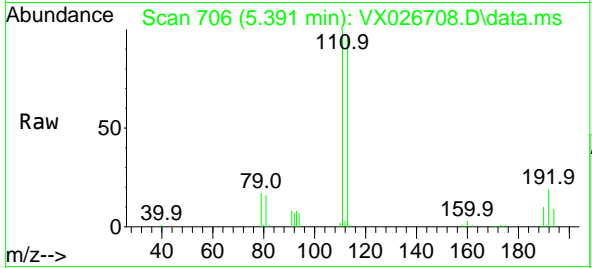
Tgt Ion: 114 Resp: 225476
 Ion Ratio Lower Upper
 114 100
 63 20.3 0.0 42.8
 88 15.9 0.0 33.0





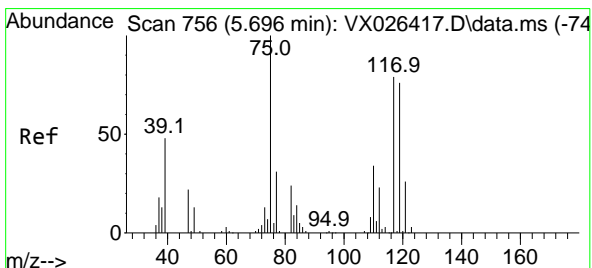
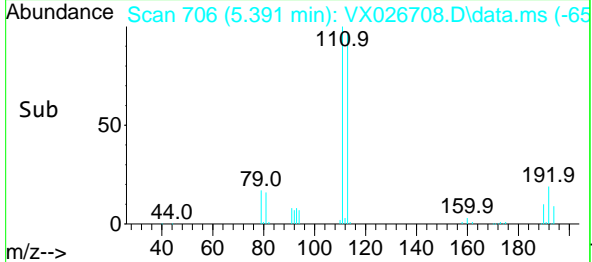
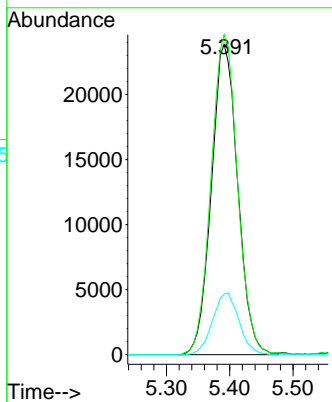
#35
 Dibromofluoromethane
 Concen: 47.342 ug/l
 RT: 5.391 min Scan# 706
 Delta R.T. -0.000 min
 Lab File: VX026708.D
 Acq: 01 Feb 2022 15:43

Instrument : MSVOA_X
 ClientSampleId : PB142403ZHE#01



Tgt Ion: 113 Resp: 68932

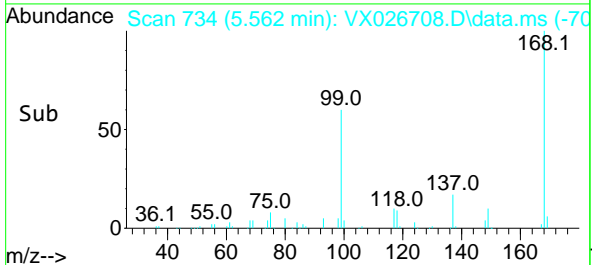
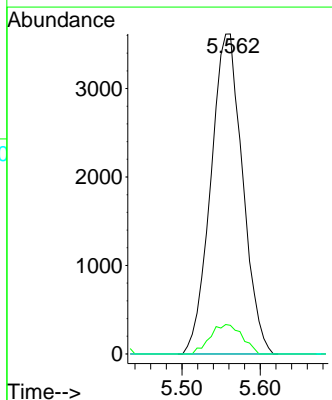
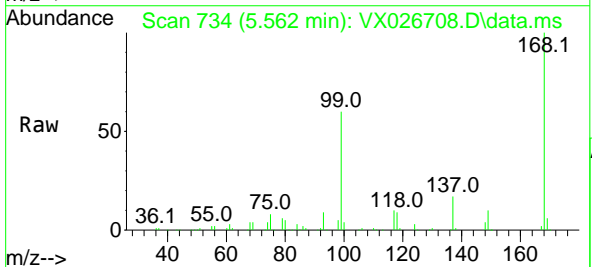
Ion	Ratio	Lower	Upper
113	100		
111	104.1	81.2	121.8
192	19.9	15.0	22.4

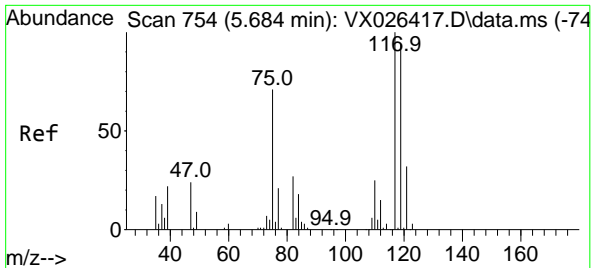


#36
 1,1-Dichloropropene
 Concen: 4.435 ug/l
 RT: 5.562 min Scan# 734
 Delta R.T. -0.134 min
 Lab File: VX026708.D
 Acq: 01 Feb 2022 15:43

Tgt Ion: 75 Resp: 10195

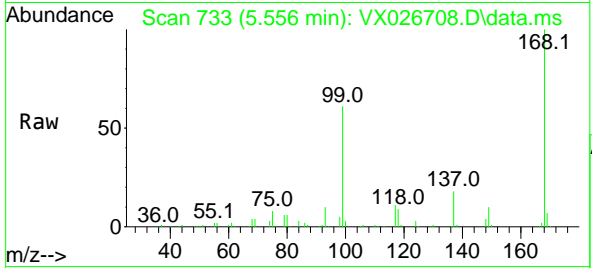
Ion	Ratio	Lower	Upper
75	100		
110	9.2	17.2	51.6#
77	0.0	24.6	36.8#



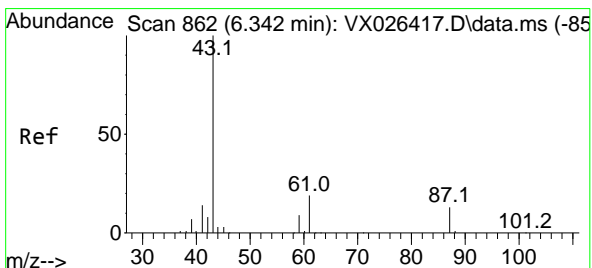
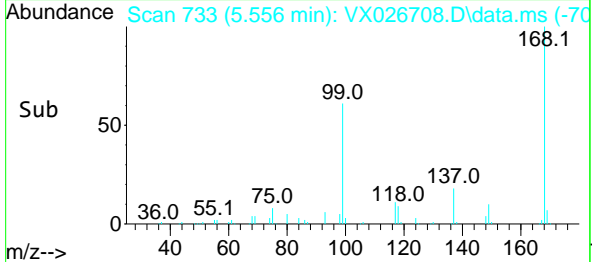
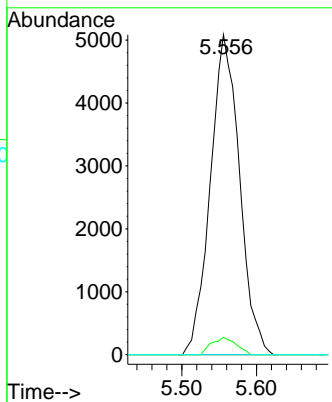


#38
 Carbon Tetrachloride
 Concen: 5.841 ug/l
 RT: 5.556 min Scan# 711
 Delta R.T. -0.128 min
 Lab File: VX026708.D
 Acq: 01 Feb 2022 15:43

Instrument : MSVOA_X
 ClientSampleId : PB142403ZHE#01

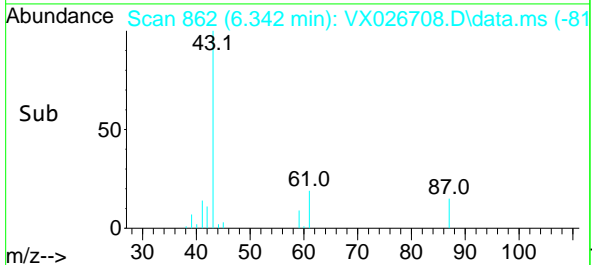
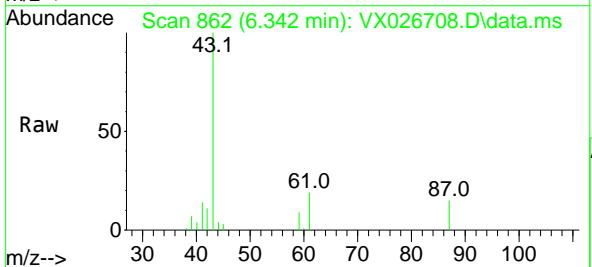
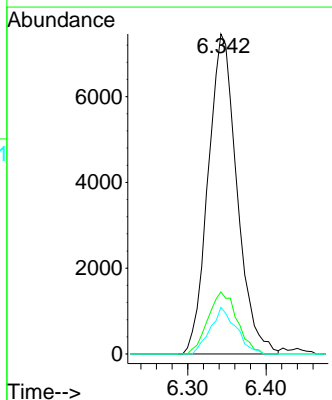


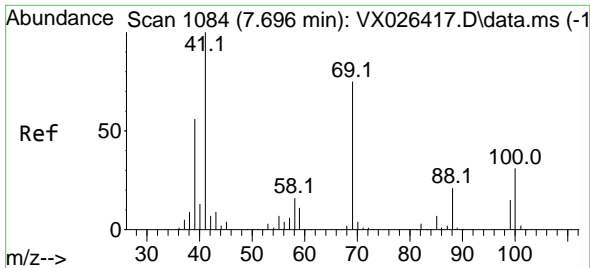
Tgt Ion:117 Resp: 13810
 Ion Ratio Lower Upper
 117 100
 119 5.4 74.7 112.1#
 121 0.0 25.4 38.0#



#43
 Isopropyl Acetate
 Concen: 5.075 ug/l
 RT: 6.342 min Scan# 862
 Delta R.T. -0.000 min
 Lab File: VX026708.D
 Acq: 01 Feb 2022 15:43

Tgt Ion: 43 Resp: 19060
 Ion Ratio Lower Upper
 43 100
 61 19.6 15.4 23.0
 87 13.0 10.2 15.2



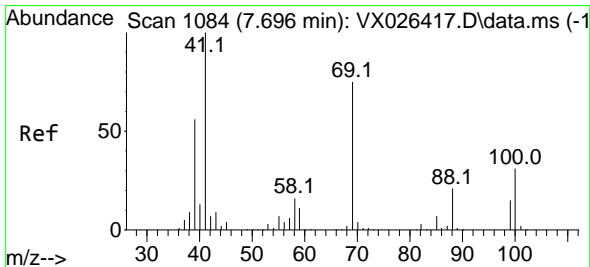
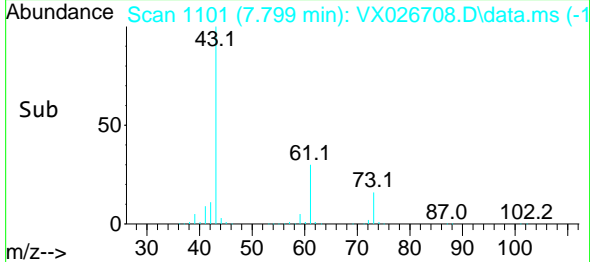
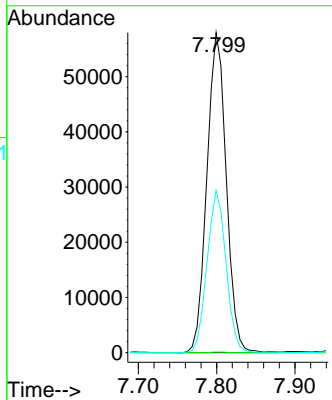
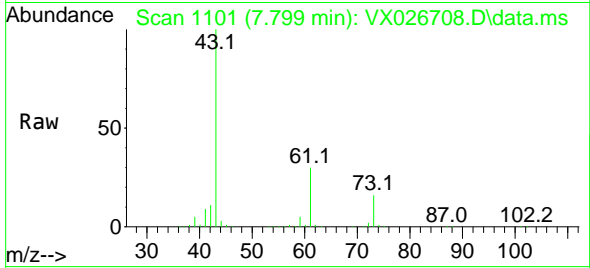


#48
 Methyl methacrylate
 Concen: 53.400 ug/l
 RT: 7.799 min Scan# 1101
 Delta R.T. 0.104 min
 Lab File: VX026708.D
 Acq: 01 Feb 2022 15:43

Instrument : MSVOA_X
 ClientSampleId : PB142403ZHE#01

Tgt Ion: 41 Resp: 99398

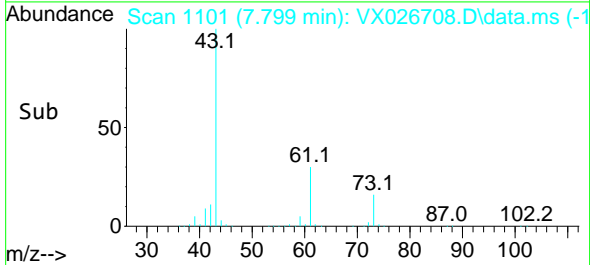
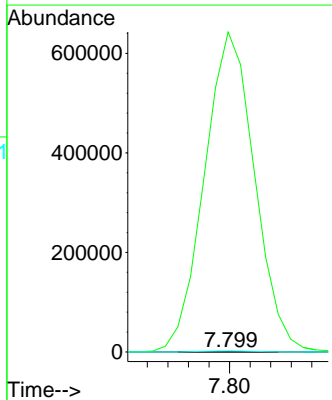
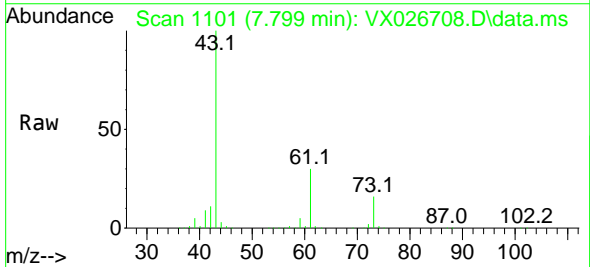
Ion	Ratio	Lower	Upper
41	100		
69	0.1	62.2	93.4#
39	49.8	45.4	68.0

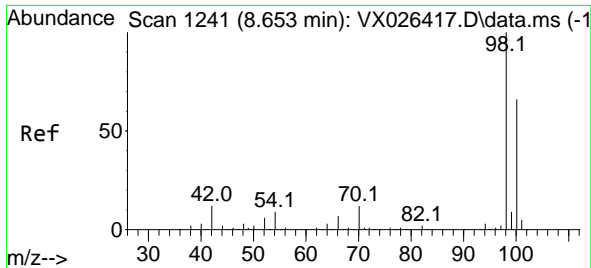


#49
 1,4-Dioxane
 Concen: 5.729 ug/l
 RT: 7.799 min Scan# 1101
 Delta R.T. 0.104 min
 Lab File: VX026708.D
 Acq: 01 Feb 2022 15:43

Tgt Ion: 88 Resp: 175

Ion	Ratio	Lower	Upper
88	100		
43	625886.3	29.9	44.9#
58	2289.1	57.8	86.6#

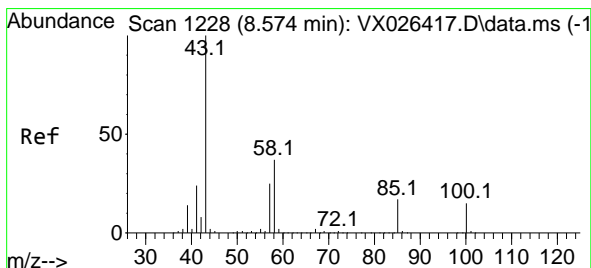
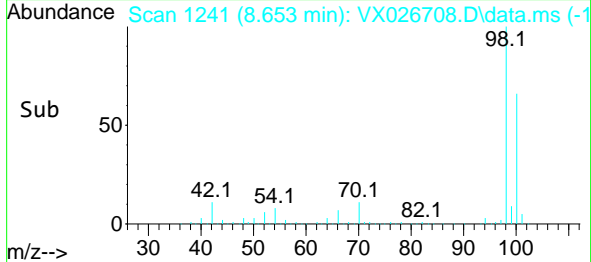
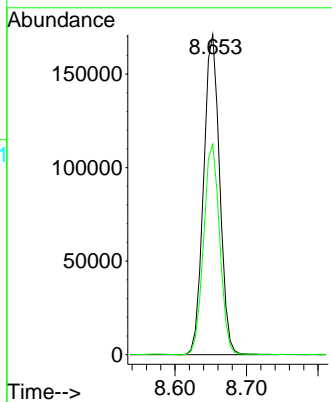
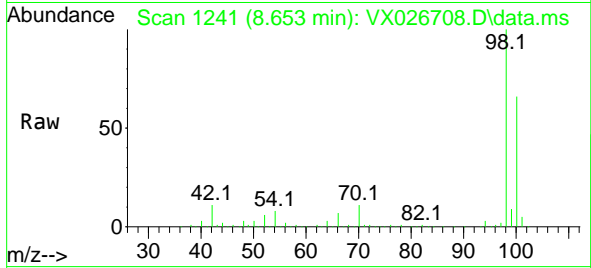




#50
 Toluene-d8
 Concen: 50.759 ug/l
 RT: 8.653 min Scan# 11
 Delta R.T. -0.000 min
 Lab File: VX026708.D
 Acq: 01 Feb 2022 15:43

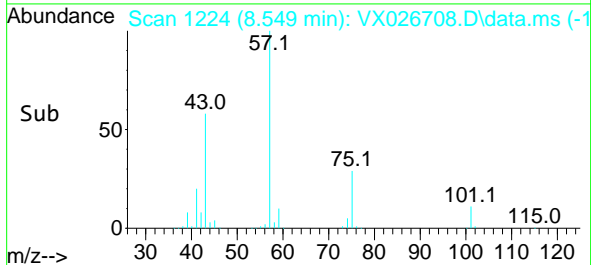
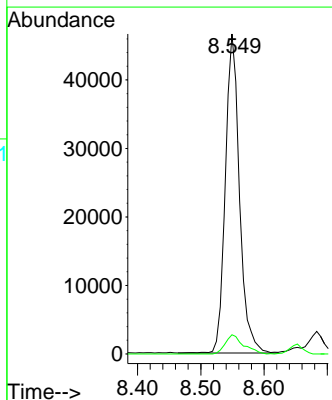
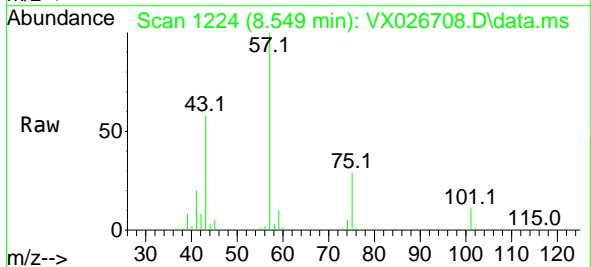
Instrument : MSVOA_X
 ClientSampleId : PB142403ZHE#01

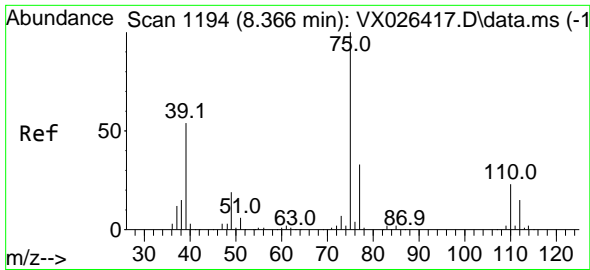
Tgt Ion: 98 Resp: 266334
 Ion Ratio Lower Upper
 98 100
 100 66.1 53.2 79.8



#51
 4-Methyl-2-Pentanone
 Concen: 32.382 ug/l
 RT: 8.549 min Scan# 1224
 Delta R.T. -0.024 min
 Lab File: VX026708.D
 Acq: 01 Feb 2022 15:43

Tgt Ion: 43 Resp: 72141
 Ion Ratio Lower Upper
 43 100
 58 7.8 30.5 45.7#

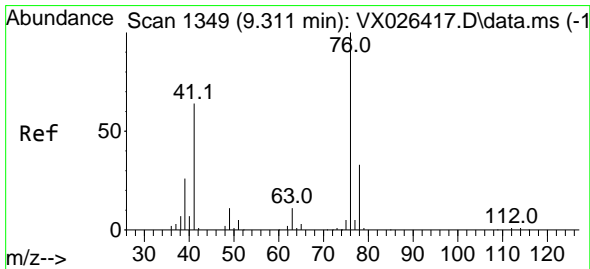
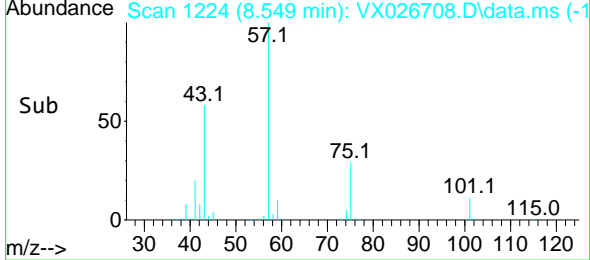
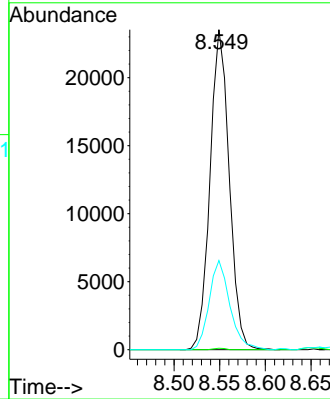
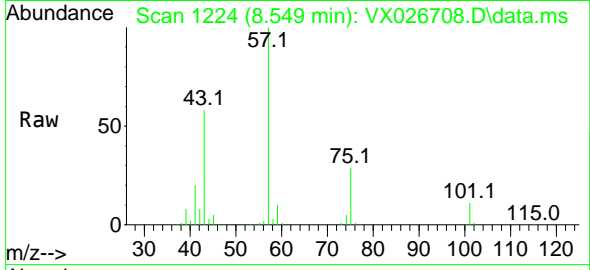




#54
 cis-1,3-Dichloropropene
 Concen: 14.195 ug/l
 RT: 8.549 min Scan# 1194
 Delta R.T. 0.183 min
 Lab File: VX026708.D
 Acq: 01 Feb 2022 15:43

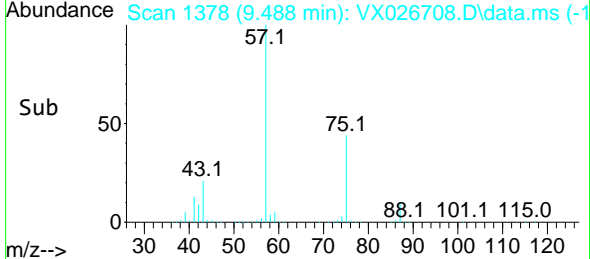
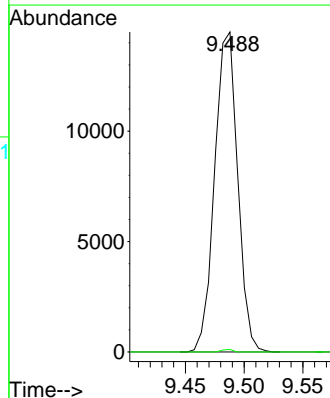
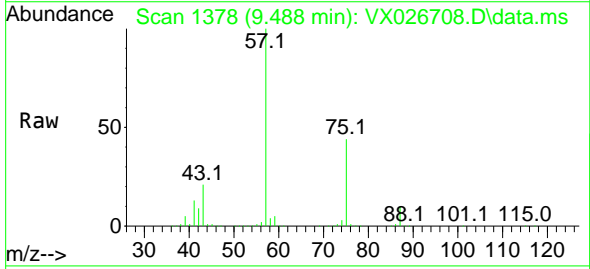
Instrument : MSVOA_X
 ClientSampleId : PB142403ZHE#01

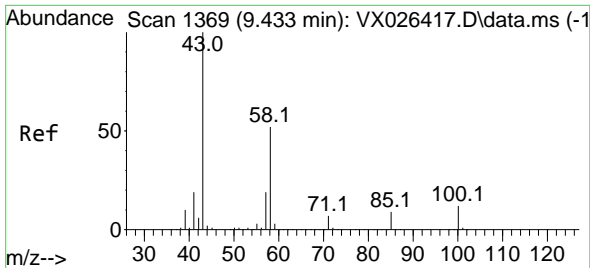
Tgt Ion	Resp	Lower	Upper
75	34439		
75	100		
77	0.4	26.2	39.2#
39	27.9	43.5	65.3#



#57
 1,3-Dichloropropane
 Concen: 7.503 ug/l
 RT: 9.488 min Scan# 1378
 Delta R.T. 0.177 min
 Lab File: VX026708.D
 Acq: 01 Feb 2022 15:43

Tgt Ion	Resp	Lower	Upper
76	19776		
76	100		
78	0.4	25.7	38.5#

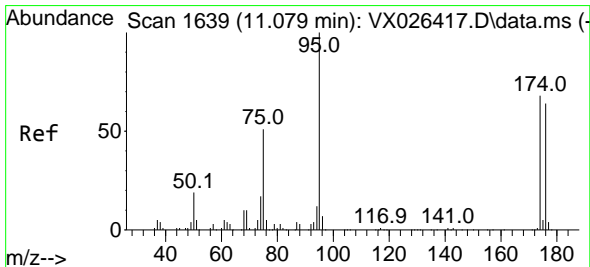
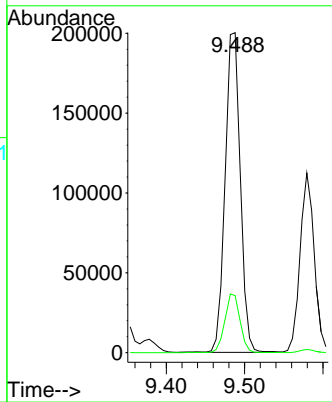
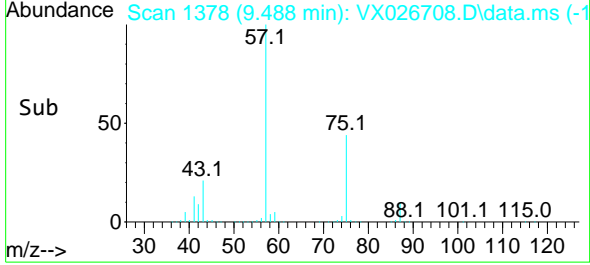
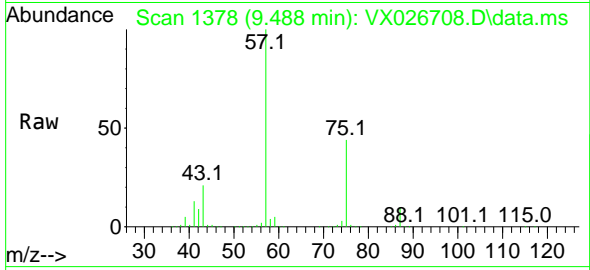




#59
 2-Hexanone
 Concen: 158.558 ug/l
 RT: 9.488 min Scan# 11
 Delta R.T. 0.055 min
 Lab File: VX026708.D
 Acq: 01 Feb 2022 15:43

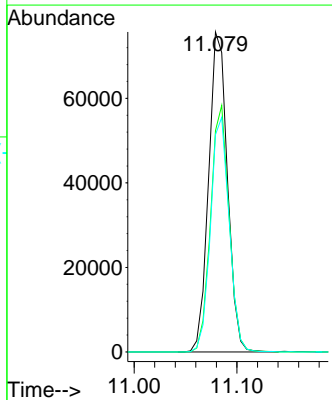
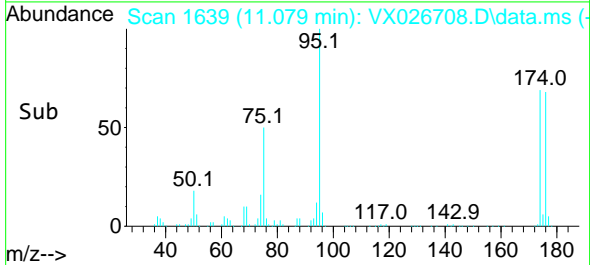
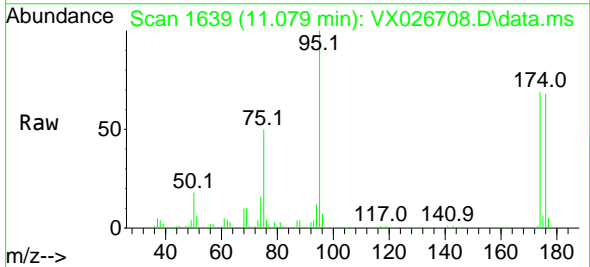
Instrument : MSVOA_X
 ClientSampleId : PB142403ZHE#01

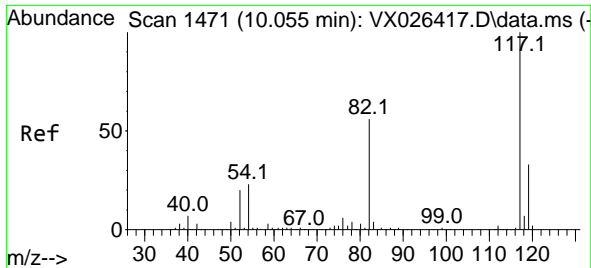
Tgt Ion: 43 Resp: 270358
 Ion Ratio Lower Upper
 43 100
 58 18.3 26.4 79.2#



#62
 4-Bromofluorobenzene
 Concen: 51.657 ug/l
 RT: 11.079 min Scan# 1639
 Delta R.T. -0.000 min
 Lab File: VX026708.D
 Acq: 01 Feb 2022 15:43

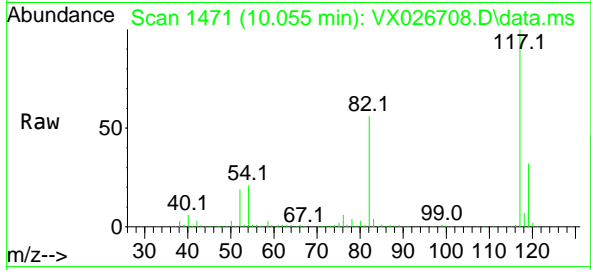
Tgt Ion: 95 Resp: 96285
 Ion Ratio Lower Upper
 95 100
 174 75.6 0.0 148.6
 176 72.8 0.0 141.4





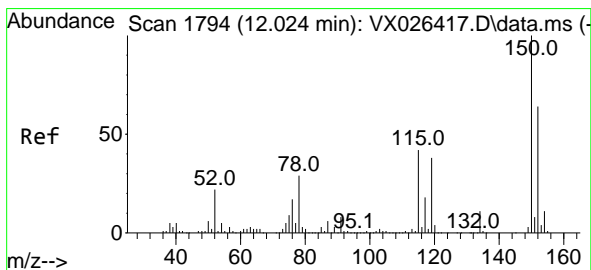
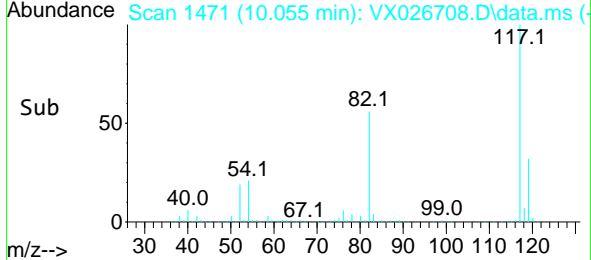
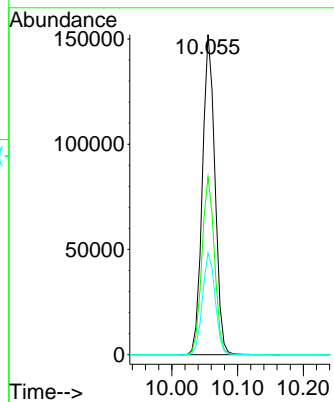
#63
 Chlorobenzene-d5
 Concen: 50.000 ug/l
 RT: 10.055 min Scan# 1471
 Delta R.T. -0.000 min
 Lab File: VX026708.D
 Acq: 01 Feb 2022 15:43

Instrument : MSVOA_X
 ClientSampleId : PB142403ZHE#01



Tgt Ion:117 Resp: 201732

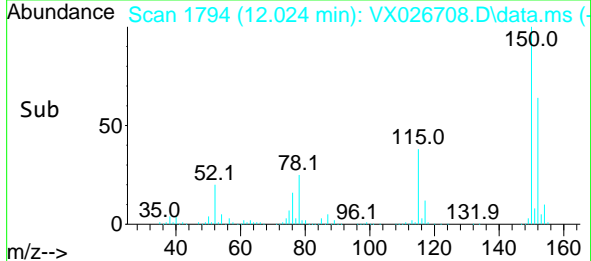
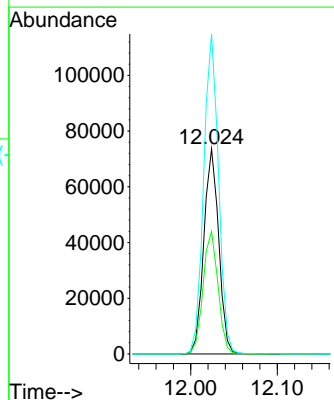
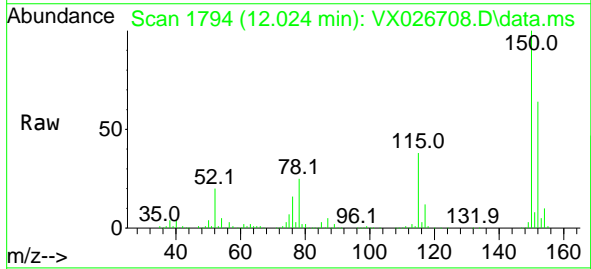
Ion	Ratio	Lower	Upper
117	100		
82	55.6	45.2	67.8
119	31.8	26.2	39.2

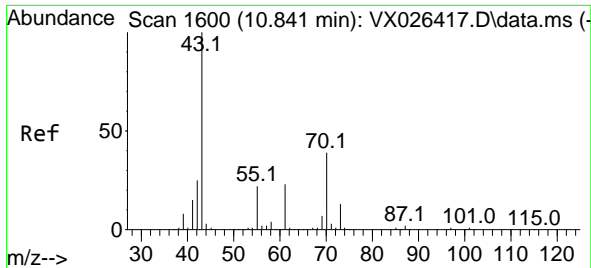


#72
 1,4-Dichlorobenzene-d4
 Concen: 50.000 ug/l
 RT: 12.024 min Scan# 1794
 Delta R.T. -0.000 min
 Lab File: VX026708.D
 Acq: 01 Feb 2022 15:43

Tgt Ion:152 Resp: 87839

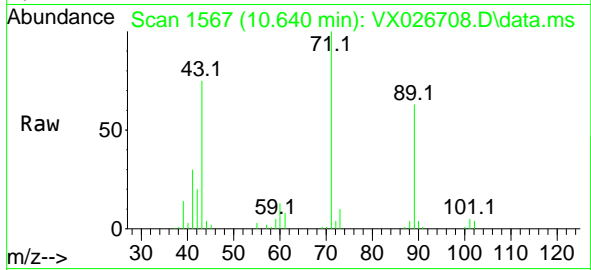
Ion	Ratio	Lower	Upper
152	100		
115	60.2	44.2	132.6
150	156.1	0.0	348.2





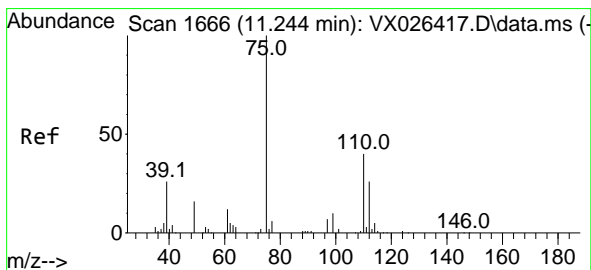
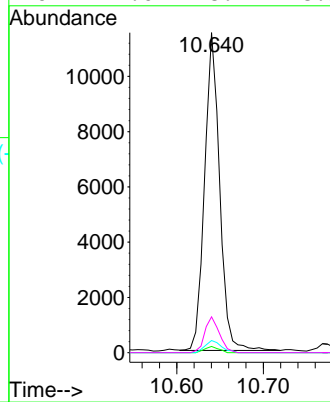
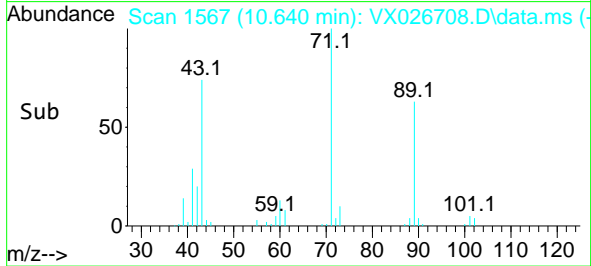
#74
 N-amy1 acetate
 Concen: 4.983 ug/l
 RT: 10.640 min Scan# 1639
 Delta R.T. -0.201 min
 Lab File: VX026708.D
 Acq: 01 Feb 2022 15:43

Instrument : MSVOA_X
 ClientSampleId : PB142403ZHE#01

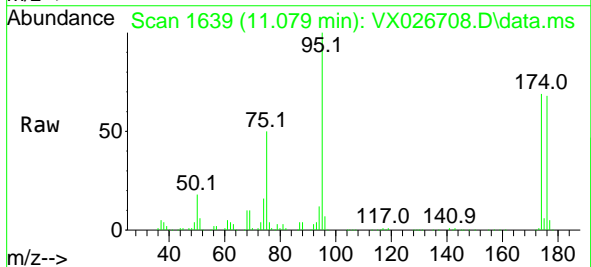


Tgt Ion: 43 Resp: 13852

Ion	Ratio	Lower	Upper
43	100		
70	1.8	32.9	49.3#
55	4.1	18.3	27.5#
61	11.0	18.9	28.3#

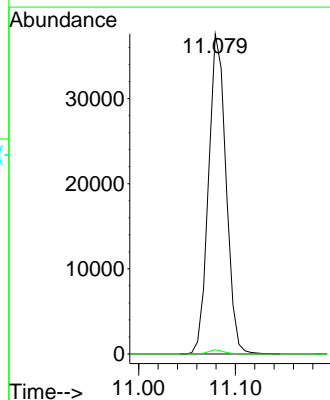
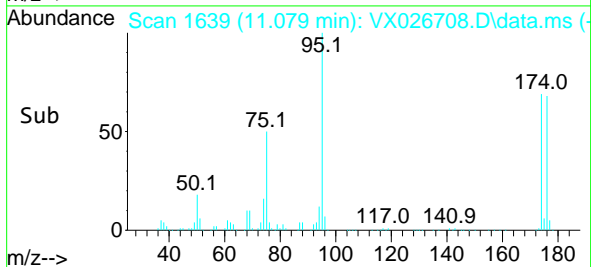


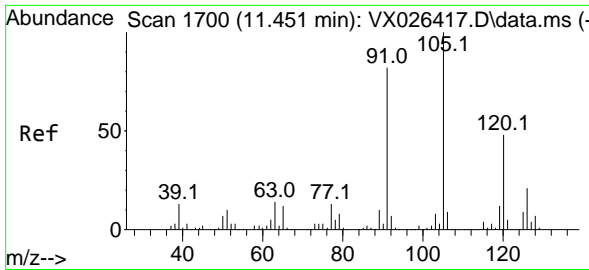
#76
 1,2,3-Trichloropropane
 Concen: 24.378 ug/l
 RT: 11.079 min Scan# 1639
 Delta R.T. -0.165 min
 Lab File: VX026708.D
 Acq: 01 Feb 2022 15:43



Tgt Ion: 75 Resp: 47148

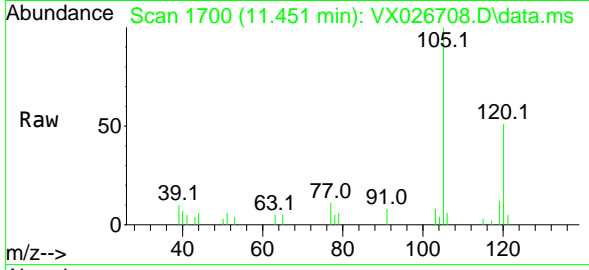
Ion	Ratio	Lower	Upper
75	100		
77	1.1	18.3	54.8#



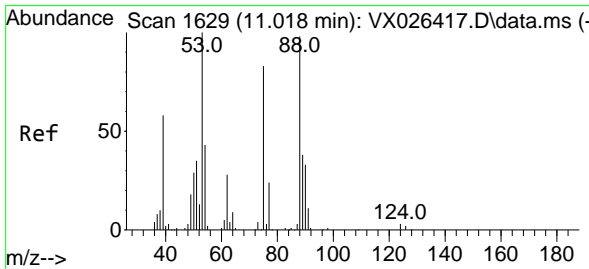
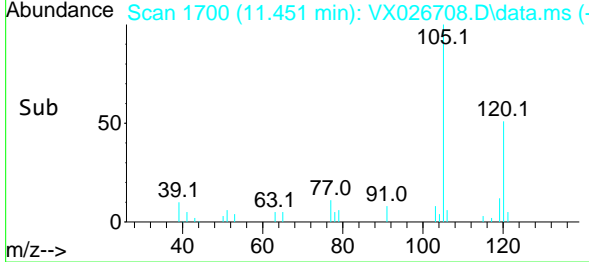
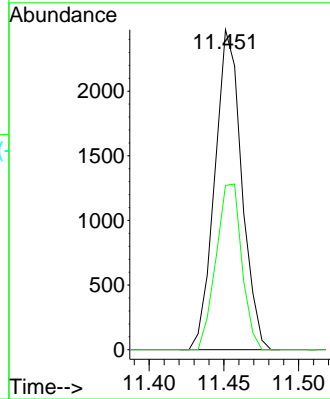


#80
 1,3,5-Trimethylbenzene
 Concen: 0.521 ug/l
 RT: 11.451 min Scan# 11
 Delta R.T. -0.000 min
 Lab File: VX026708.D
 Acq: 01 Feb 2022 15:43

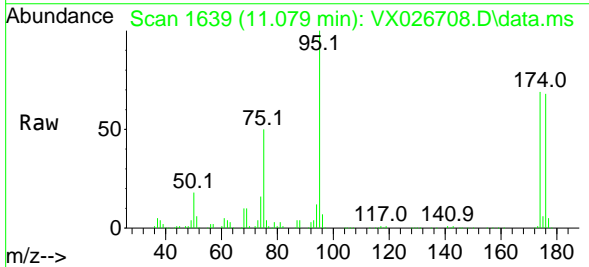
Instrument : MSVOA_X
 ClientSampleId : PB142403ZHE#01



Tgt Ion:105 Resp: 3095
 Ion Ratio Lower Upper
 105 100
 120 49.5 24.0 72.0



#81
 trans-1,4-Dichloro-2-butene
 Concen: 74.224 ug/l
 RT: 11.079 min Scan# 1639
 Delta R.T. 0.061 min
 Lab File: VX026708.D
 Acq: 01 Feb 2022 15:43



Tgt Ion: 75 Resp: 47148
 Ion Ratio Lower Upper
 75 100
 53 0.0 94.0 141.0#
 89 0.0 37.0 55.4#

