

Data Path : Z:\voasrv\HPCHEM1\MSVOA\_X\Data\VX020322\  
 Data File : VX026762.D  
 Acq On : 03 Feb 2022 16:49  
 Operator : JC/MD  
 Sample : N1356-04  
 Misc : 5.0mL/MSVOA\_X/WATER  
 ALS Vial : 11 Sample Multiplier: 1

Instrument :  
 MSVOA\_X  
 ClientSampleId :  
 M-PHC

Quant Time: Feb 04 02:34:06 2022  
 Quant Method : Z:\voasrv\HPCHEM1\MSVOA\_X\Method\82X011122W.M  
 Quant Title : SW846 8260  
 QLast Update : Tue Jan 11 14:45:13 2022  
 Response via : Initial Calibration

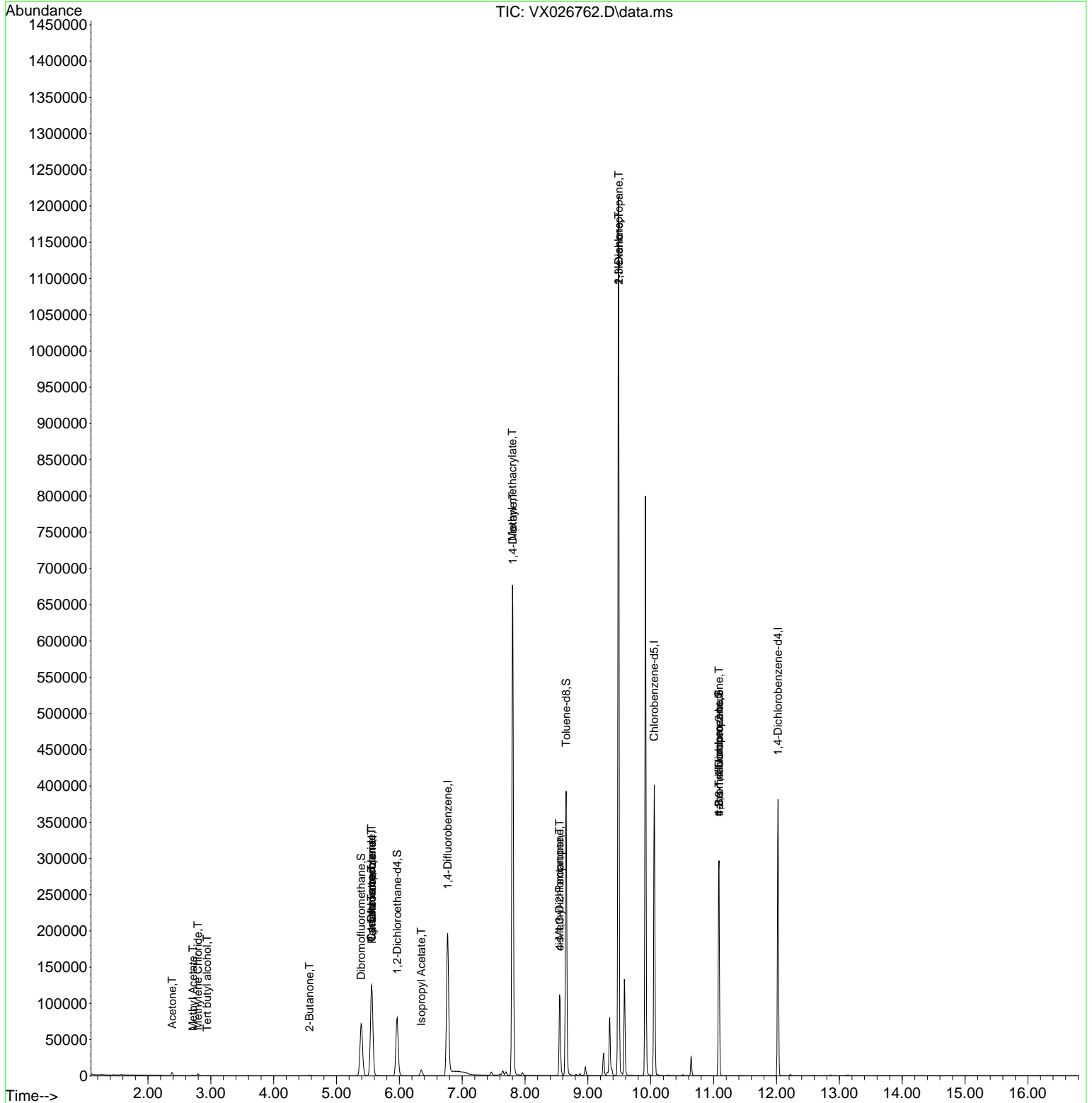
Compound	R.T.	QIon	Response	Conc	Units	Dev(Min)
Internal Standards						
1) Pentafluorobenzene	5.562	168	118100	50.000	ug/l	0.00
34) 1,4-Difluorobenzene	6.769	114	200121	50.000	ug/l	0.00
63) Chlorobenzene-d5	10.055	117	174660	50.000	ug/l	0.00
72) 1,4-Dichlorobenzene-d4	12.024	152	76149	50.000	ug/l	0.00
System Monitoring Compounds						
33) 1,2-Dichloroethane-d4	5.964	65	76706	46.495	ug/l	0.00
Spiked Amount	50.000	Range 78 - 117	Recovery	=	93.000%	
35) Dibromofluoromethane	5.391	113	63633	49.239	ug/l	0.00
Spiked Amount	50.000	Range 75 - 124	Recovery	=	98.480%	
50) Toluene-d8	8.653	98	229361	49.251	ug/l	0.00
Spiked Amount	50.000	Range 92 - 112	Recovery	=	98.500%	
62) 4-Bromofluorobenzene	11.085	95	81944	49.533	ug/l	0.00
Spiked Amount	50.000	Range 83 - 123	Recovery	=	99.060%	
Target Compounds						
						Qvalue
11) Tert butyl alcohol	2.940	59	275	1.198	ug/l #	75
16) Acetone	2.386	43	5116	6.081	ug/l	99
18) Methyl Acetate	2.715	43	1392	0.832	ug/l #	85
20) Methylene Chloride	2.794	84	1200	0.863	ug/l #	91
25) 2-Butanone	4.568	43	1025	0.937	ug/l	98
31) Cyclohexane	5.556	56	2281	0.937	ug/l #	1
36) 1,1-Dichloropropene	5.556	75	8954	4.389	ug/l #	50
38) Carbon Tetrachloride	5.556	117	12519	5.966	ug/l #	17
43) Isopropyl Acetate	6.348	43	10963	3.289	ug/l	99
48) Methyl methacrylate	7.799	41	57740	34.950	ug/l #	44
49) 1,4-Dioxane	7.805	88	75	2.766	ug/l #	1
51) 4-Methyl-2-Pentanone	8.549	43	38407	19.424	ug/l #	50
54) cis-1,3-Dichloropropene	8.549	75	17889	8.308	ug/l #	55
57) 1,3-Dichloropropane	9.488	76	10601	4.531	ug/l #	43
59) 2-Hexanone	9.488	43	146824	97.018	ug/l #	52
76) 1,2,3-Trichloropropane	11.085	75	40844	24.361	ug/l #	40
81) trans-1,4-Dichloro-2-b...	11.085	75	40844	74.174	ug/l #	3

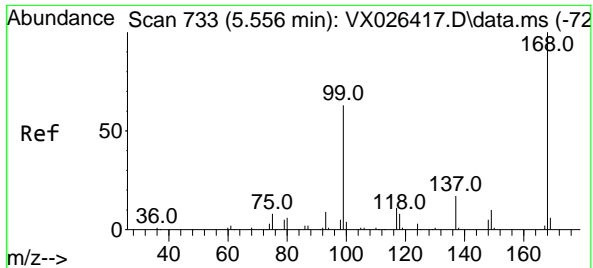
(#) = qualifier out of range (m) = manual integration (+) = signals summed

Data Path : Z:\voasrv\HPCHEM1\MSVOA\_X\Data\VX020322\  
 Data File : VX026762.D  
 Acq On : 03 Feb 2022 16:49  
 Operator : JC/MD  
 Sample : N1356-04  
 Misc : 5.0mL/MSVOA\_X/WATER  
 ALS Vial : 11 Sample Multiplier: 1

Instrument :  
 MSVOA\_X  
 ClientSampleId :  
 M-PHC

Quant Time: Feb 04 02:34:06 2022  
 Quant Method : Z:\voasrv\HPCHEM1\MSVOA\_X\Method\82X011122W.M  
 Quant Title : SW846 8260  
 QLast Update : Tue Jan 11 14:45:13 2022  
 Response via : Initial Calibration

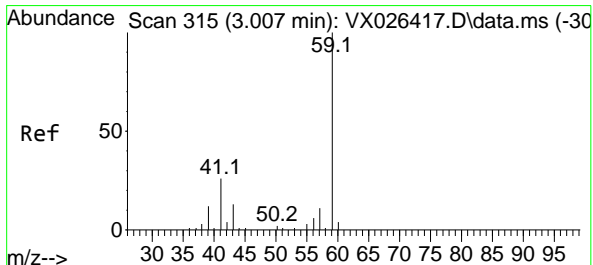
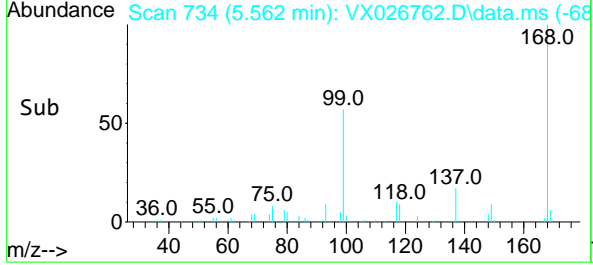
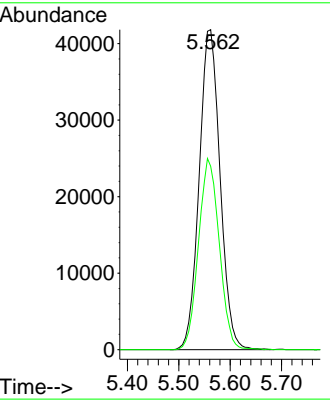
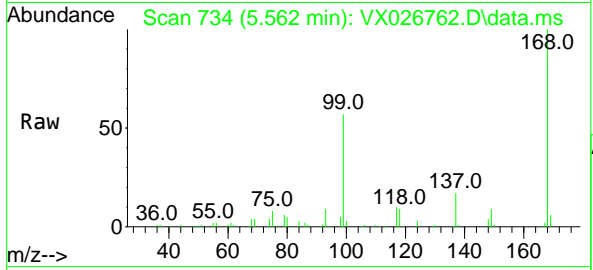




#1  
 Pentafluorobenzene  
 Concen: 50.000 ug/l  
 RT: 5.562 min Scan# 71  
 Delta R.T. 0.006 min  
 Lab File: VX026762.D  
 Acq: 03 Feb 2022 16:49

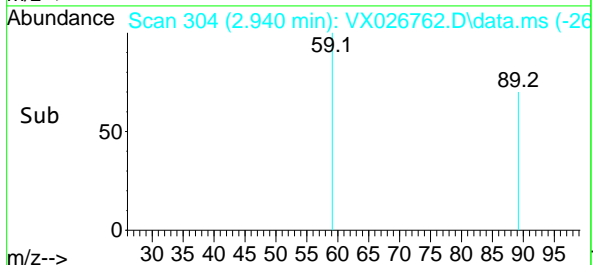
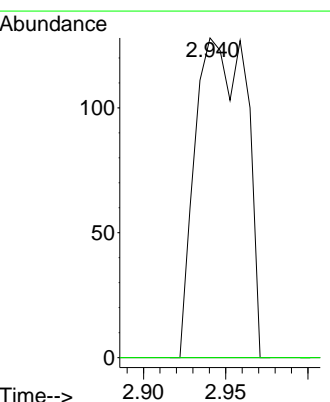
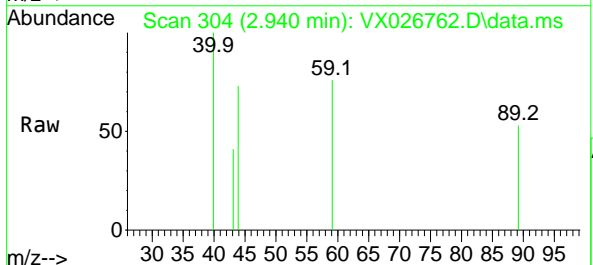
Instrument : MSVOA\_X  
 ClientSampleId : M-PHC

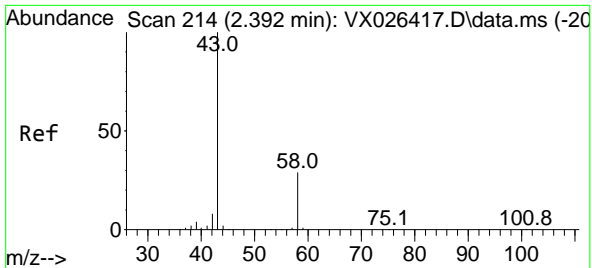
Tgt Ion:168 Resp: 118100  
 Ion Ratio Lower Upper  
 168 100  
 99 57.3 50.3 75.5



#11  
 Tert butyl alcohol  
 Concen: 1.198 ug/l  
 RT: 2.940 min Scan# 304  
 Delta R.T. -0.067 min  
 Lab File: VX026762.D  
 Acq: 03 Feb 2022 16:49

Tgt Ion: 59 Resp: 275  
 Ion Ratio Lower Upper  
 59 100  
 57 0.0 7.2 10.8#

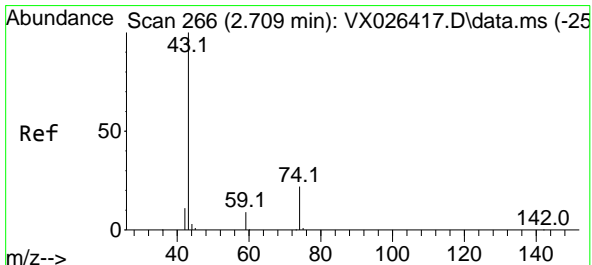
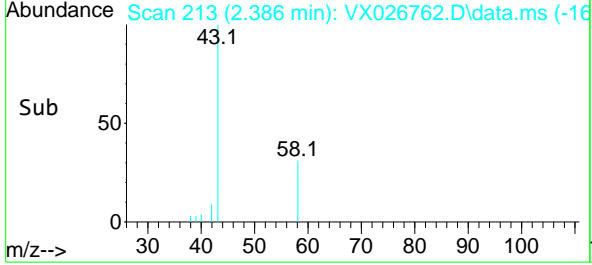
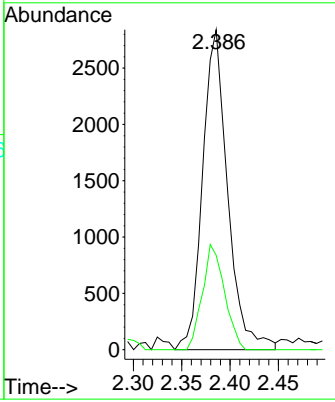
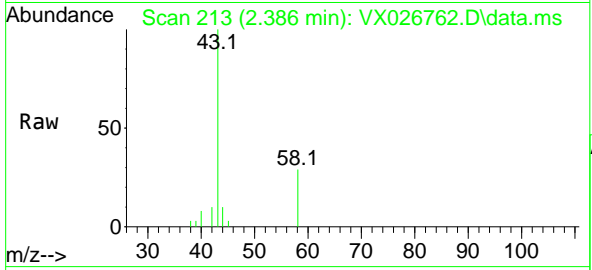




#16  
 Acetone  
 Concen: 6.081 ug/l  
 RT: 2.386 min Scan# 211  
 Delta R.T. -0.006 min  
 Lab File: VX026762.D  
 Acq: 03 Feb 2022 16:49

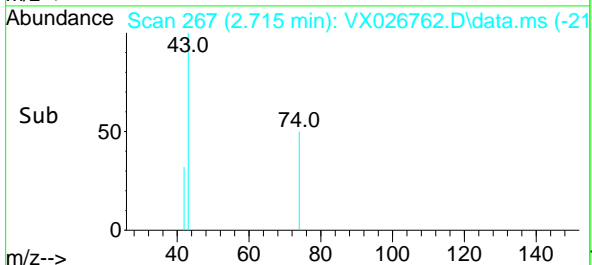
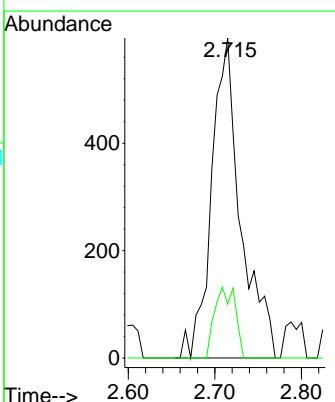
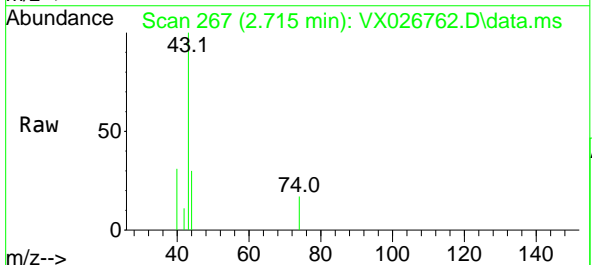
Instrument : MSVOA\_X  
 ClientSampleId : M-PHC

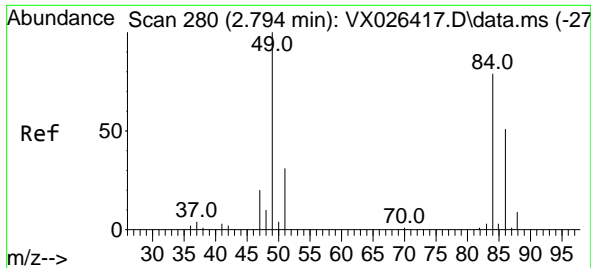
Tgt Ion: 43 Resp: 5116  
 Ion Ratio Lower Upper  
 43 100  
 58 29.5 23.0 34.6



#18  
 Methyl Acetate  
 Concen: 0.832 ug/l  
 RT: 2.715 min Scan# 267  
 Delta R.T. 0.006 min  
 Lab File: VX026762.D  
 Acq: 03 Feb 2022 16:49

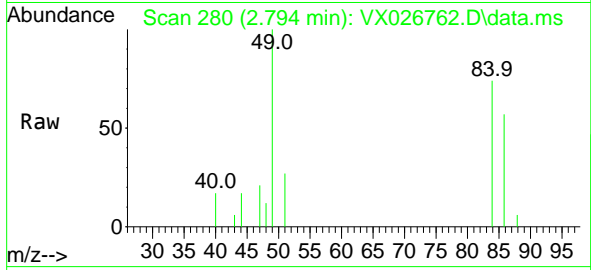
Tgt Ion: 43 Resp: 1392  
 Ion Ratio Lower Upper  
 43 100  
 74 15.6 18.3 27.5#





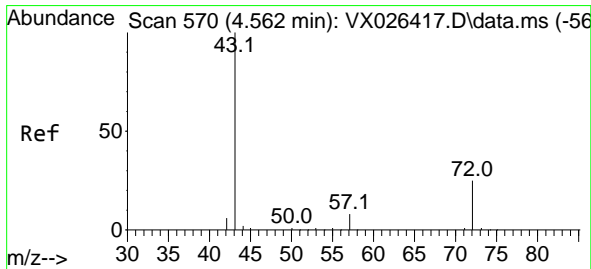
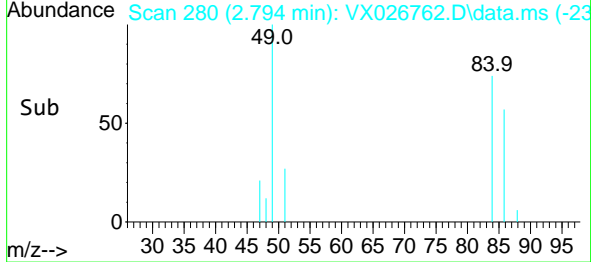
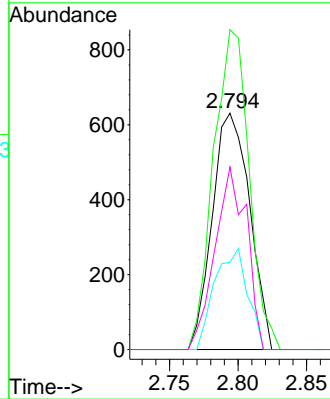
#20  
 Methylene Chloride  
 Concen: 0.863 ug/l  
 RT: 2.794 min Scan# 21  
 Delta R.T. -0.000 min  
 Lab File: VX026762.D  
 Acq: 03 Feb 2022 16:49

Instrument : MSVOA\_X  
 ClientSampleId : M-PHC



Tgt Ion: 84 Resp: 1200

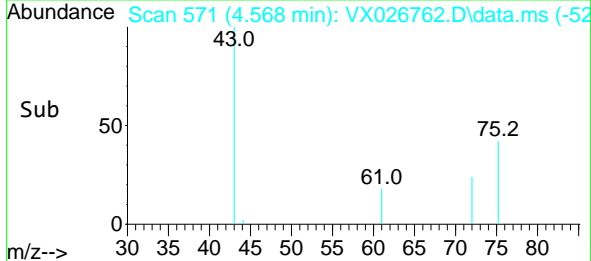
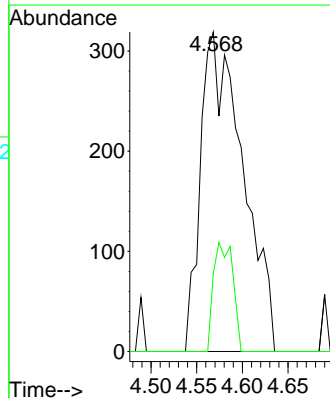
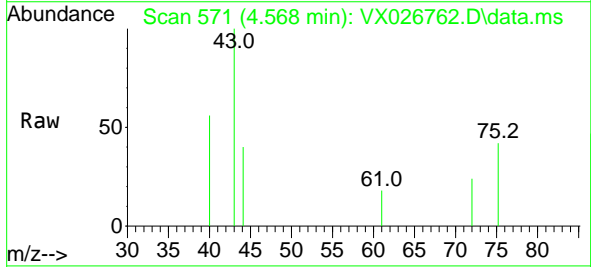
Ion	Ratio	Lower	Upper
84	100		
49	135.3	101.5	152.3
51	36.9	31.2	46.8
86	77.2	51.3	76.9

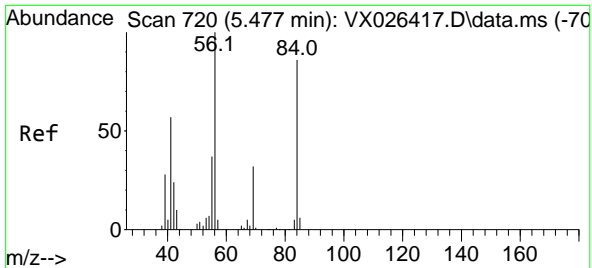


#25  
 2-Butanone  
 Concen: 0.937 ug/l  
 RT: 4.568 min Scan# 571  
 Delta R.T. 0.006 min  
 Lab File: VX026762.D  
 Acq: 03 Feb 2022 16:49

Tgt Ion: 43 Resp: 1025

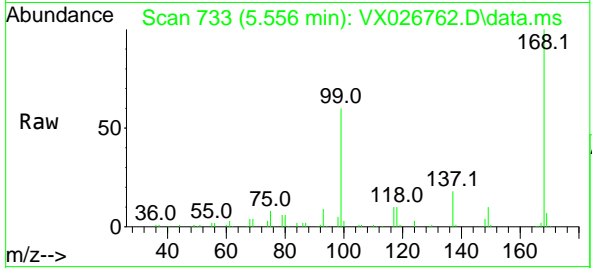
Ion	Ratio	Lower	Upper
43	100		
72	24.5	20.4	30.6



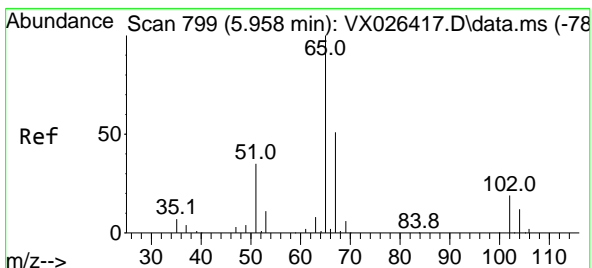
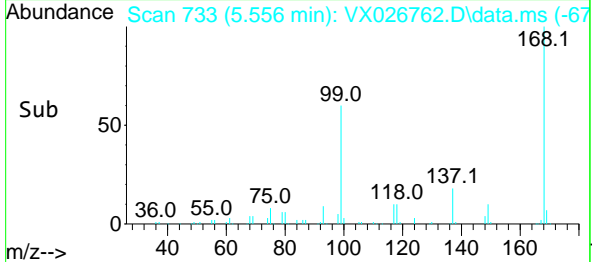
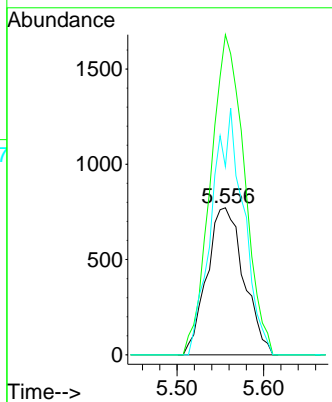


#31  
 Cyclohexane  
 Concen: 0.937 ug/l  
 RT: 5.556 min Scan# 71  
 Delta R.T. 0.079 min  
 Lab File: VX026762.D  
 Acq: 03 Feb 2022 16:49

Instrument :  
 MSVOA\_X  
 ClientSampleId :  
 M-PHC

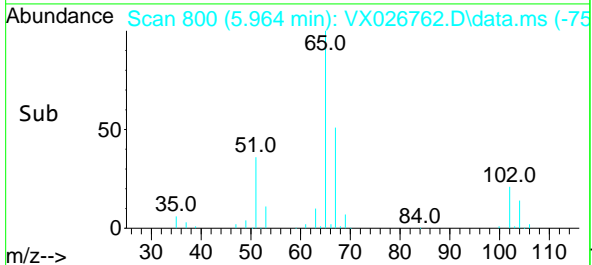
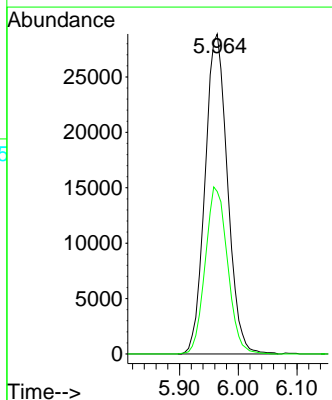
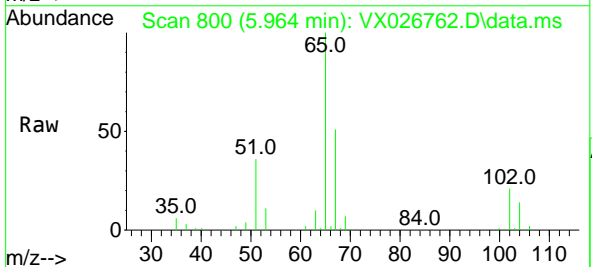


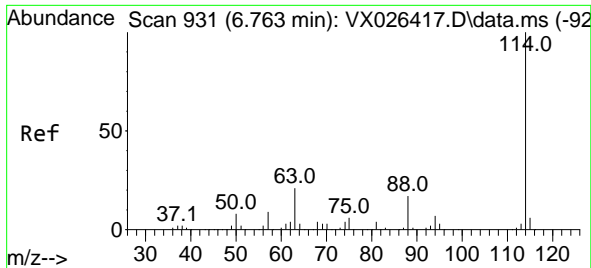
Tgt Ion: 56 Resp: 2281  
 Ion Ratio Lower Upper  
 56 100  
 69 217.7 25.8 38.6#  
 84 128.0 68.9 103.3#



#33  
 1,2-Dichloroethane-d4  
 Concen: 46.495 ug/l  
 RT: 5.964 min Scan# 800  
 Delta R.T. 0.006 min  
 Lab File: VX026762.D  
 Acq: 03 Feb 2022 16:49

Tgt Ion: 65 Resp: 76706  
 Ion Ratio Lower Upper  
 65 100  
 67 51.9 0.0 100.8



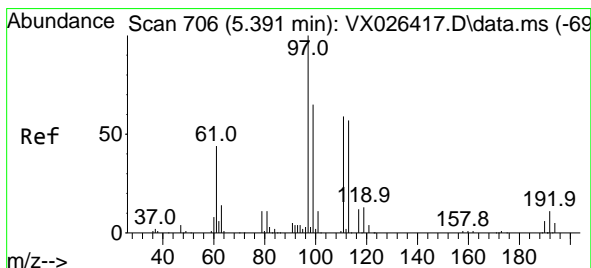
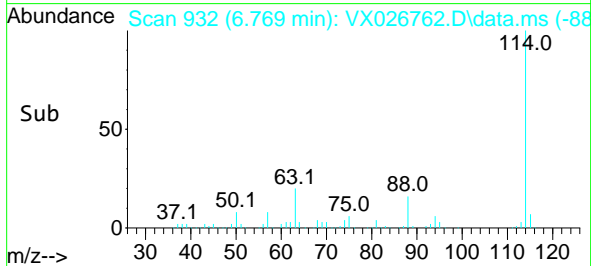
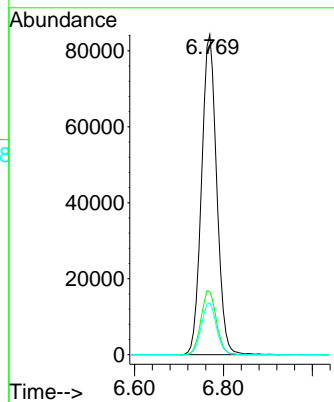
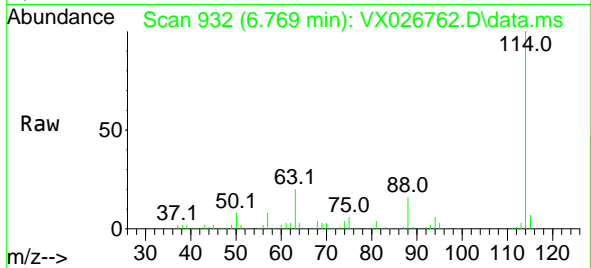


#34  
 1,4-Difluorobenzene  
 Concen: 50.000 ug/l  
 RT: 6.769 min Scan# 911  
 Delta R.T. 0.006 min  
 Lab File: VX026762.D  
 Acq: 03 Feb 2022 16:49

Instrument :  
 MSVOA\_X  
 ClientSampleId :  
 M-PHC

Tgt Ion:114 Resp: 200121

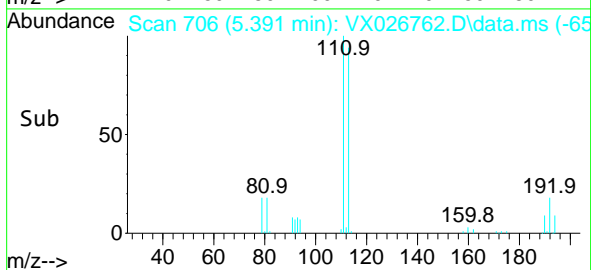
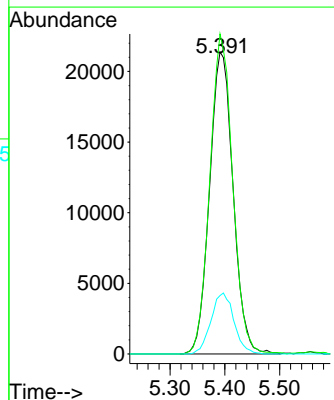
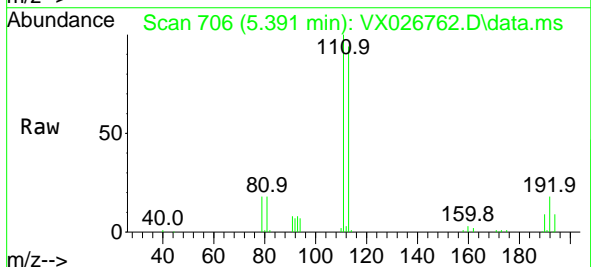
Ion	Ratio	Lower	Upper
114	100		
63	19.7	0.0	42.8
88	16.1	0.0	33.0

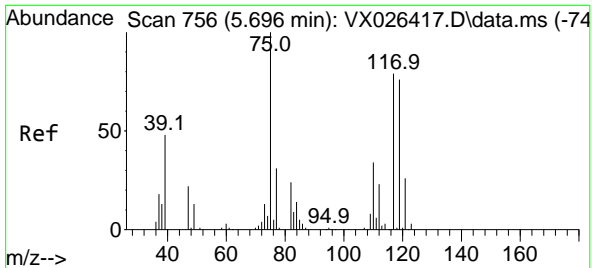


#35  
 Dibromofluoromethane  
 Concen: 49.239 ug/l  
 RT: 5.391 min Scan# 706  
 Delta R.T. -0.000 min  
 Lab File: VX026762.D  
 Acq: 03 Feb 2022 16:49

Tgt Ion:113 Resp: 63633

Ion	Ratio	Lower	Upper
113	100		
111	102.9	81.2	121.8
192	19.8	15.0	22.4

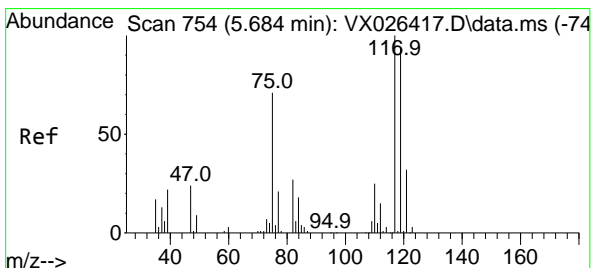
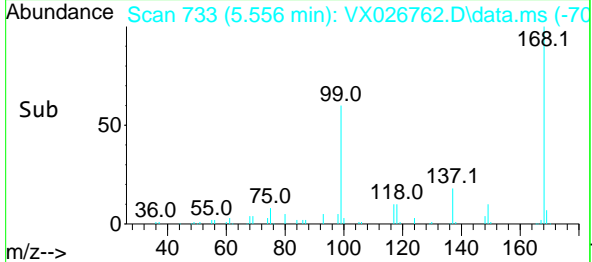
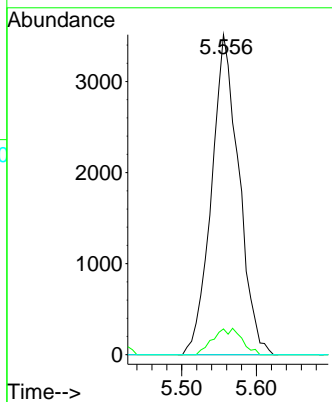
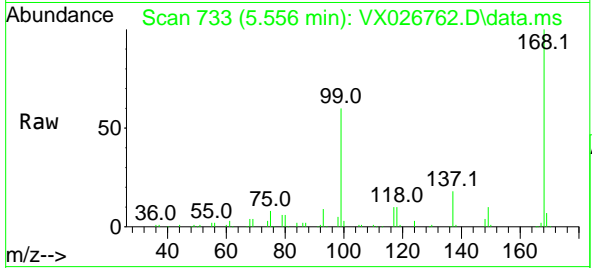




#36  
 1,1-Dichloropropene  
 Concen: 4.389 ug/l  
 RT: 5.556 min Scan# 711  
 Delta R.T. -0.140 min  
 Lab File: VX026762.D  
 Acq: 03 Feb 2022 16:49

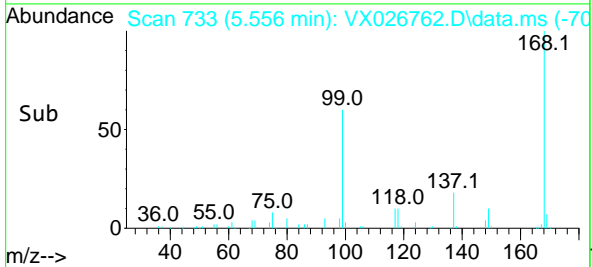
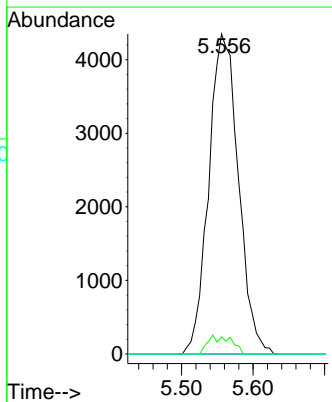
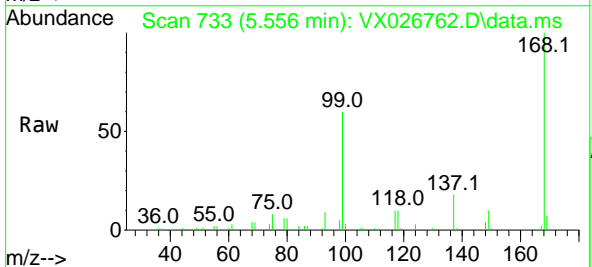
Instrument : MSVOA\_X  
 ClientSampleId : M-PHC

Tgt Ion	Resp	Lower	Upper
75	8954		
75	100		
110	8.7	17.2	51.6#
77	0.0	24.6	36.8#

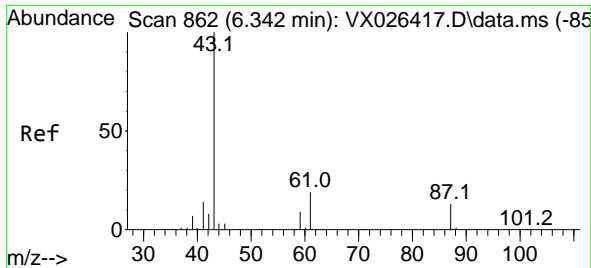


#38  
 Carbon Tetrachloride  
 Concen: 5.966 ug/l  
 RT: 5.556 min Scan# 733  
 Delta R.T. -0.128 min  
 Lab File: VX026762.D  
 Acq: 03 Feb 2022 16:49

Tgt Ion	Resp	Lower	Upper
117	12519		
117	100		
119	5.4	74.7	112.1#
121	0.0	25.4	38.0#





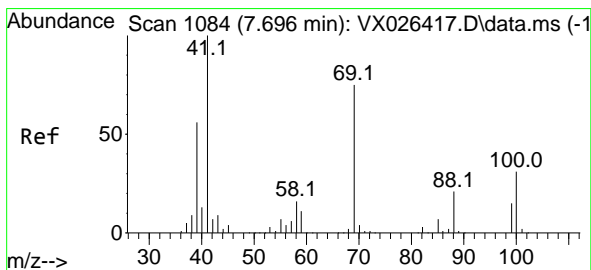
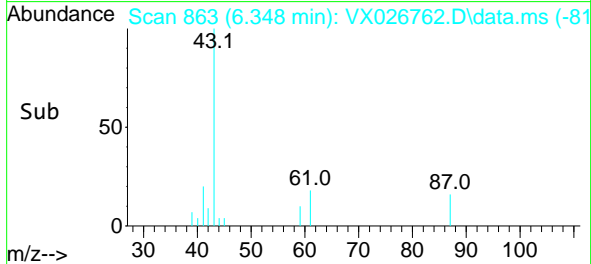
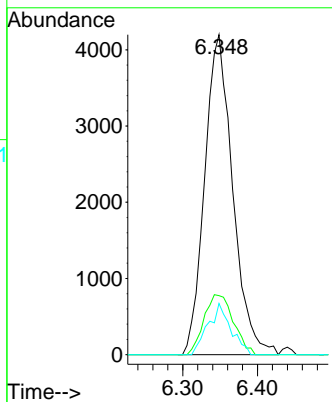
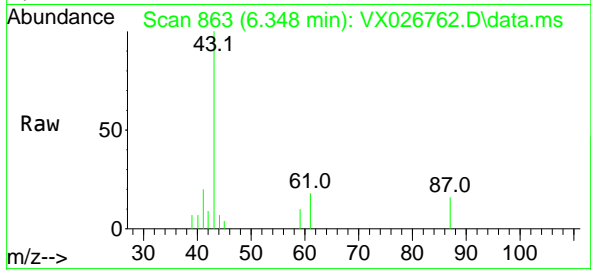


#43  
 Isopropyl Acetate  
 Concen: 3.289 ug/l  
 RT: 6.348 min Scan# 80  
 Delta R.T. 0.006 min  
 Lab File: VX026762.D  
 Acq: 03 Feb 2022 16:49

Instrument :  
 MSVOA\_X  
 ClientSampleId :  
 M-PHC

Tgt Ion: 43 Resp: 10963

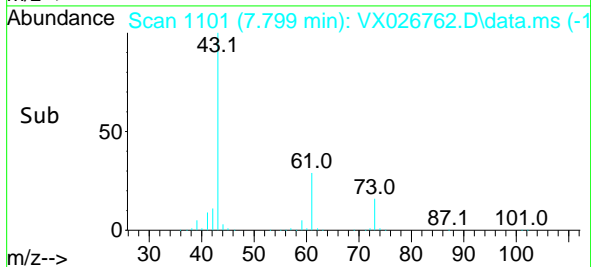
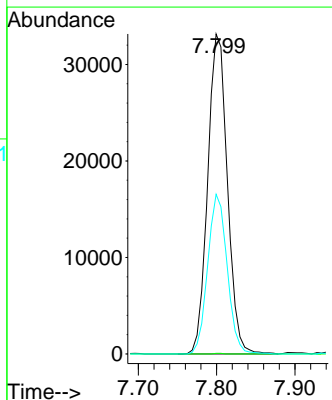
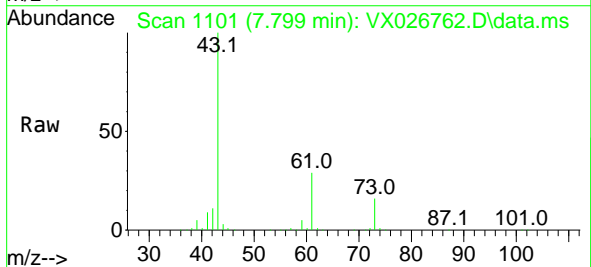
Ion	Ratio	Lower	Upper
43	100		
61	19.7	15.4	23.0
87	13.1	10.2	15.2

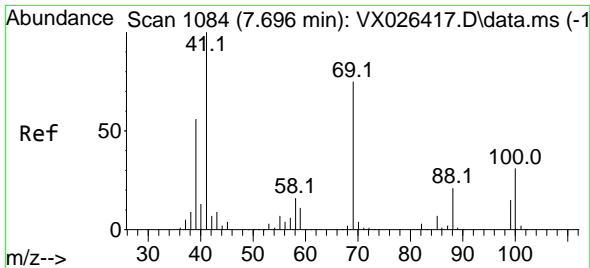


#48  
 Methyl methacrylate  
 Concen: 34.950 ug/l  
 RT: 7.799 min Scan# 1101  
 Delta R.T. 0.104 min  
 Lab File: VX026762.D  
 Acq: 03 Feb 2022 16:49

Tgt Ion: 41 Resp: 57740

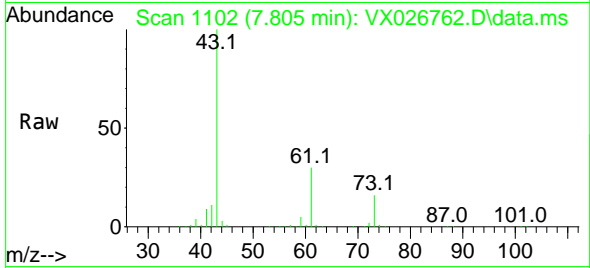
Ion	Ratio	Lower	Upper
41	100		
69	0.1	62.2	93.4#
39	49.5	45.4	68.0



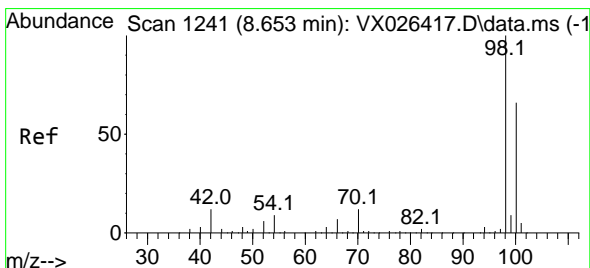
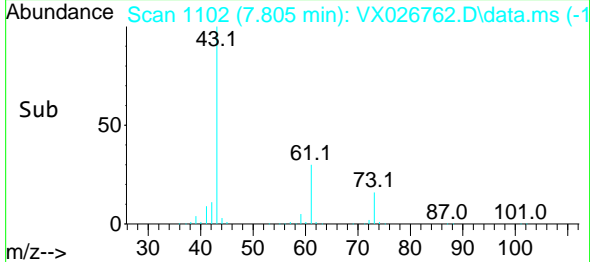
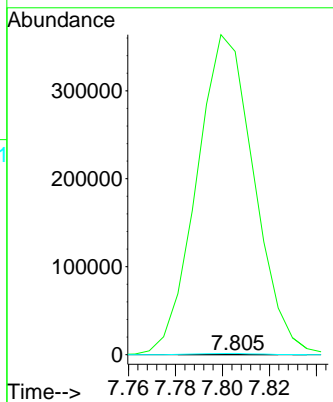


#49  
 1,4-Dioxane  
 Concen: 2.766 ug/l  
 RT: 7.805 min Scan# 1102  
 Delta R.T. 0.110 min  
 Lab File: VX026762.D  
 Acq: 03 Feb 2022 16:49

Instrument : MSVOA\_X  
 ClientSampleId : M-PHC

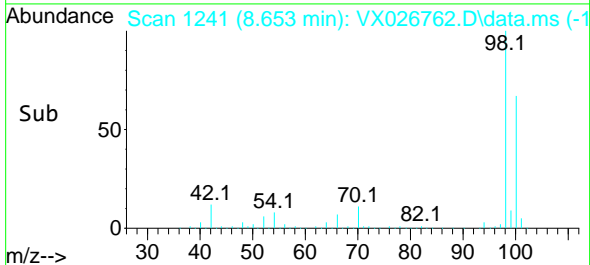
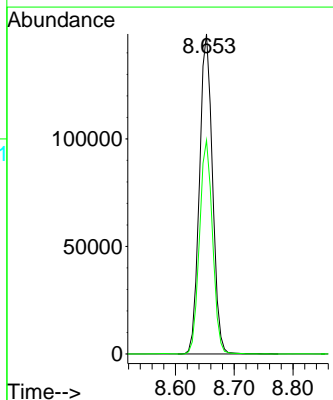
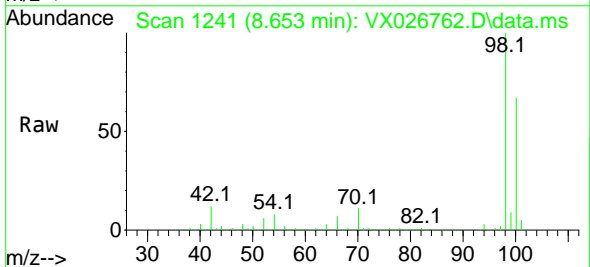


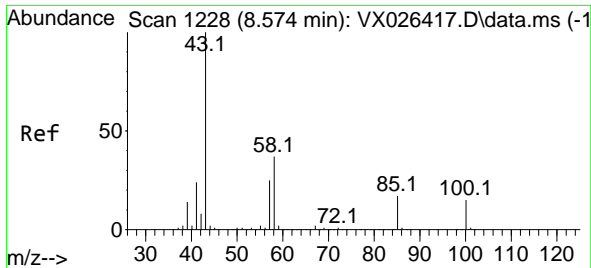
Tgt Ion: 88 Resp: 75  
 Ion Ratio Lower Upper  
 88 100  
 43 831638.7 29.9 44.9#  
 58 3300.0 57.8 86.6#



#50  
 Toluene-d8  
 Concen: 49.251 ug/l  
 RT: 8.653 min Scan# 1241  
 Delta R.T. -0.000 min  
 Lab File: VX026762.D  
 Acq: 03 Feb 2022 16:49

Tgt Ion: 98 Resp: 229361  
 Ion Ratio Lower Upper  
 98 100  
 100 66.8 53.2 79.8

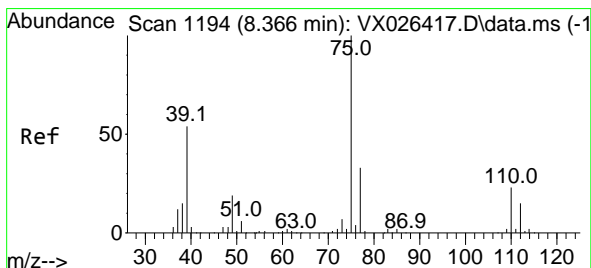
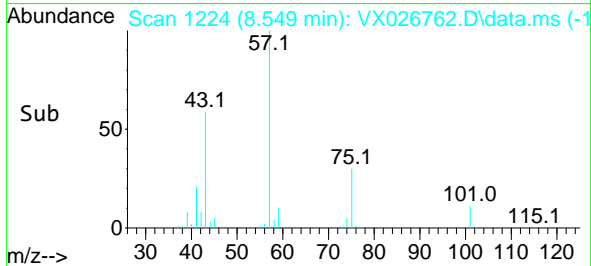
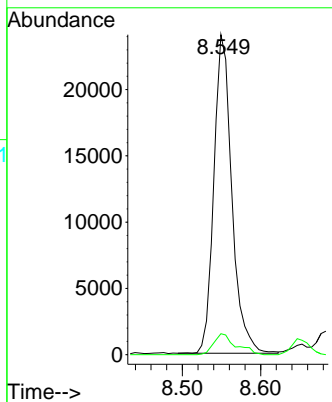
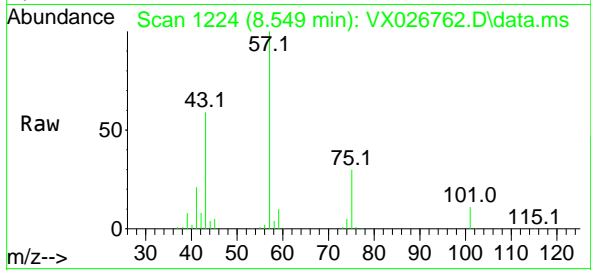




#51  
 4-Methyl-2-Pentanone  
 Concen: 19.424 ug/l  
 RT: 8.549 min Scan# 1224  
 Delta R.T. -0.024 min  
 Lab File: VX026762.D  
 Acq: 03 Feb 2022 16:49

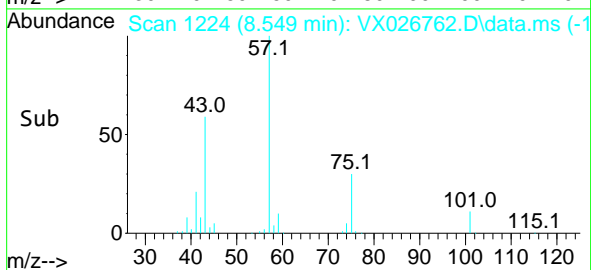
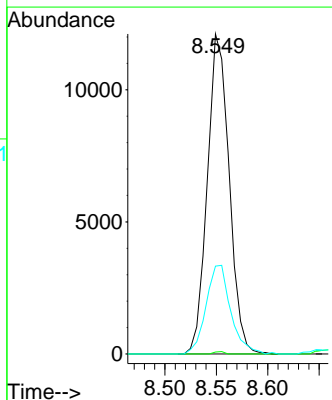
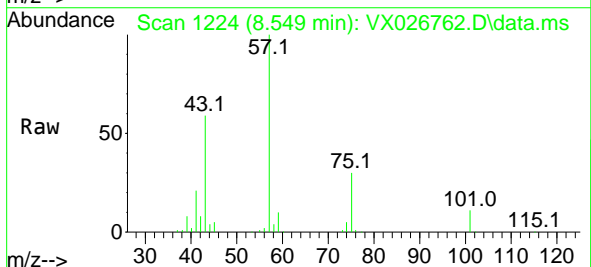
Instrument : MSVOA\_X  
 ClientSampleId : M-PHC

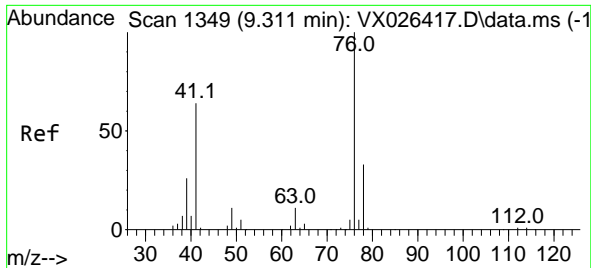
Tgt Ion: 43 Resp: 38407  
 Ion Ratio Lower Upper  
 43 100  
 58 8.1 30.5 45.7#



#54  
 cis-1,3-Dichloropropene  
 Concen: 8.308 ug/l  
 RT: 8.549 min Scan# 1224  
 Delta R.T. 0.183 min  
 Lab File: VX026762.D  
 Acq: 03 Feb 2022 16:49

Tgt Ion: 75 Resp: 17889  
 Ion Ratio Lower Upper  
 75 100  
 77 0.6 26.2 39.2#  
 39 27.4 43.5 65.3#

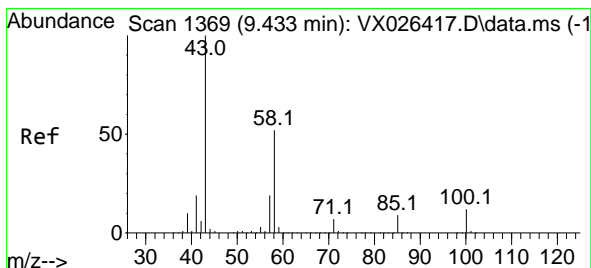
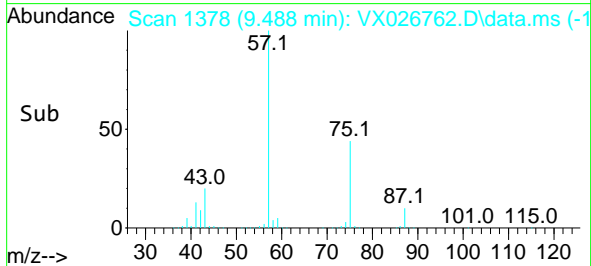
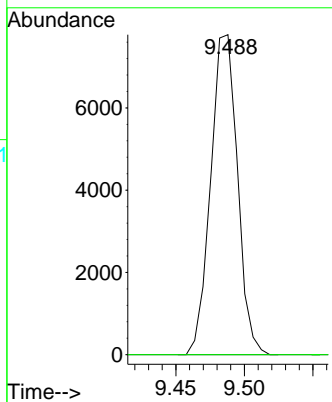
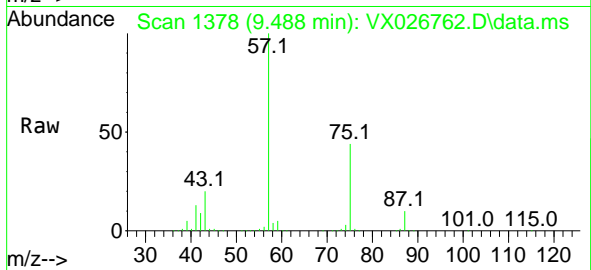




#57  
 1,3-Dichloropropane  
 Concen: 4.531 ug/l  
 RT: 9.488 min Scan# 1378  
 Delta R.T. 0.177 min  
 Lab File: VX026762.D  
 Acq: 03 Feb 2022 16:49

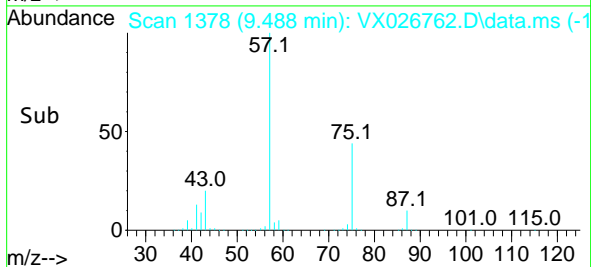
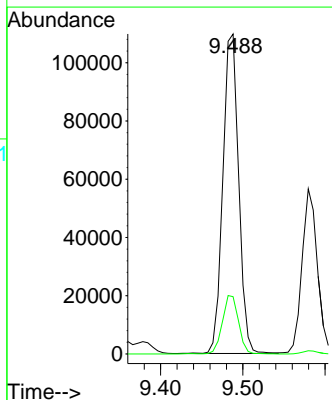
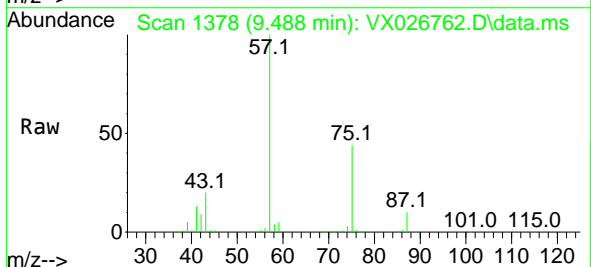
Instrument : MSVOA\_X  
 ClientSampleId : M-PHC

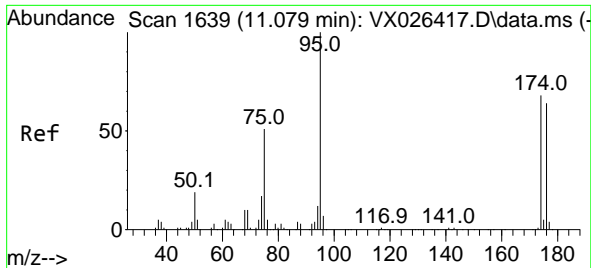
Tgt Ion: 76 Resp: 10601  
 Ion Ratio Lower Upper  
 76 100  
 78 0.0 25.7 38.5#



#59  
 2-Hexanone  
 Concen: 97.018 ug/l  
 RT: 9.488 min Scan# 1378  
 Delta R.T. 0.055 min  
 Lab File: VX026762.D  
 Acq: 03 Feb 2022 16:49

Tgt Ion: 43 Resp: 146824  
 Ion Ratio Lower Upper  
 43 100  
 58 18.6 26.4 79.2#

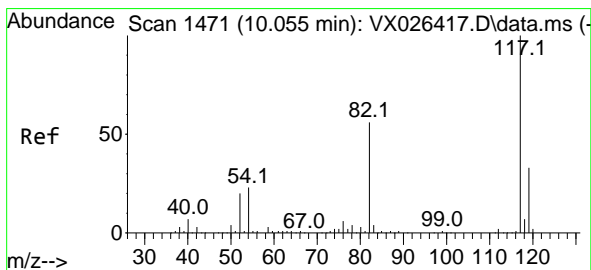
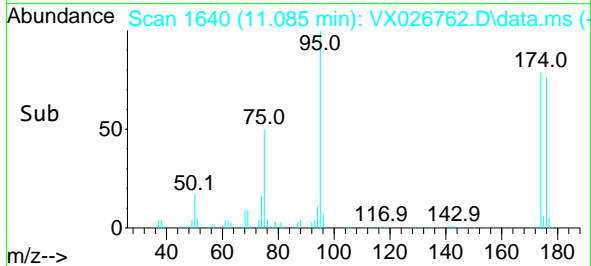
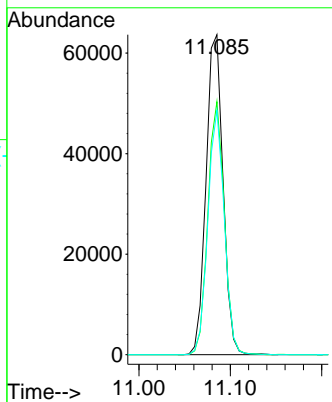
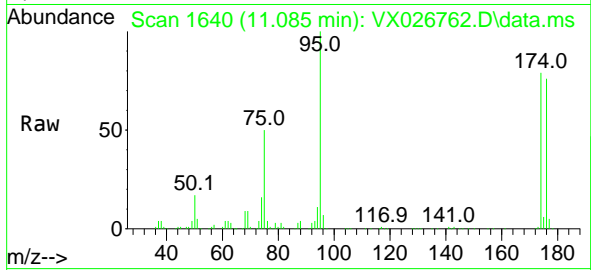




#62  
 4-Bromofluorobenzene  
 Concen: 49.533 ug/l  
 RT: 11.085 min Scan# 11  
 Delta R.T. 0.006 min  
 Lab File: VX026762.D  
 Acq: 03 Feb 2022 16:49

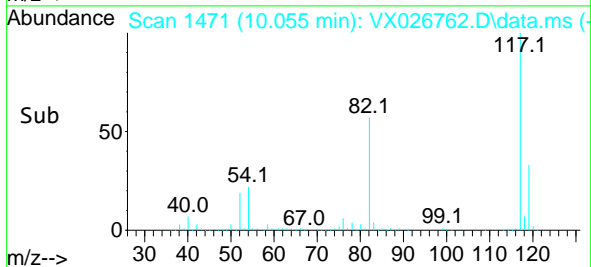
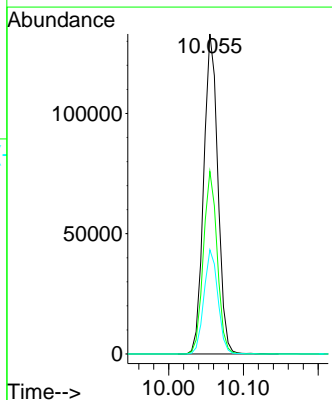
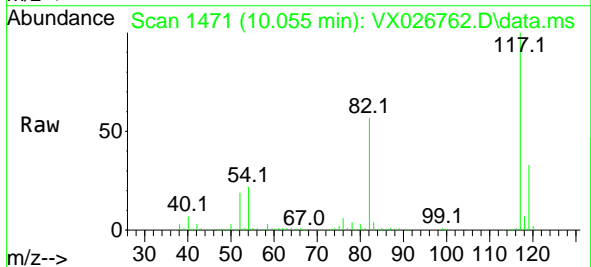
Instrument :  
 MSVOA\_X  
 ClientSampleId :  
 M-PHC

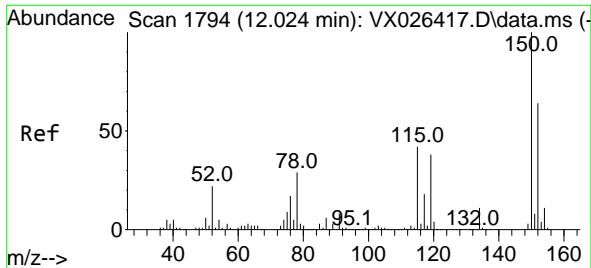
Tgt Ion: 95 Resp: 81944  
 Ion Ratio Lower Upper  
 95 100  
 174 76.5 0.0 148.6  
 176 73.7 0.0 141.4



#63  
 Chlorobenzene-d5  
 Concen: 50.000 ug/l  
 RT: 10.055 min Scan# 1471  
 Delta R.T. -0.000 min  
 Lab File: VX026762.D  
 Acq: 03 Feb 2022 16:49

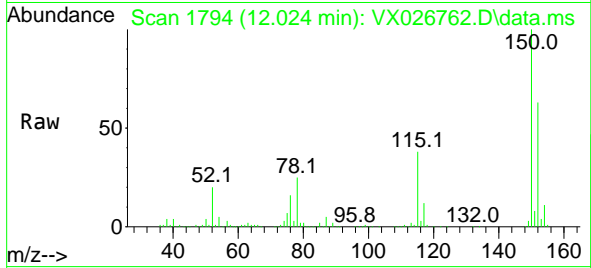
Tgt Ion: 117 Resp: 174660  
 Ion Ratio Lower Upper  
 117 100  
 82 57.1 45.2 67.8  
 119 32.5 26.2 39.2



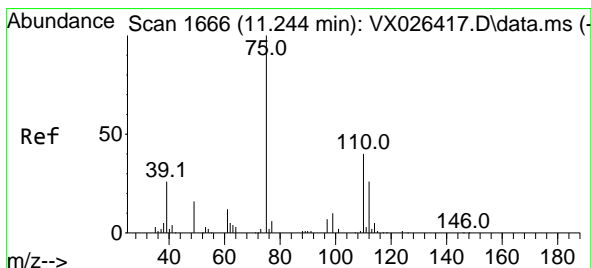
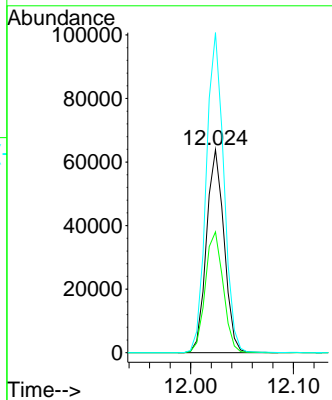
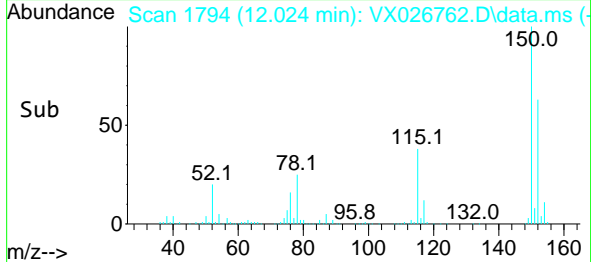


#72  
 1,4-Dichlorobenzene-d4  
 Concen: 50.000 ug/l  
 RT: 12.024 min Scan# 11  
 Delta R.T. -0.000 min  
 Lab File: VX026762.D  
 Acq: 03 Feb 2022 16:49

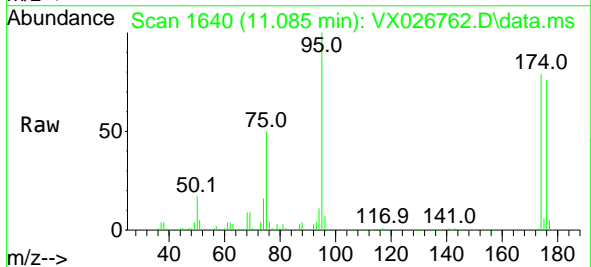
Instrument :  
 MSVOA\_X  
 ClientSampleId :  
 M-PHC



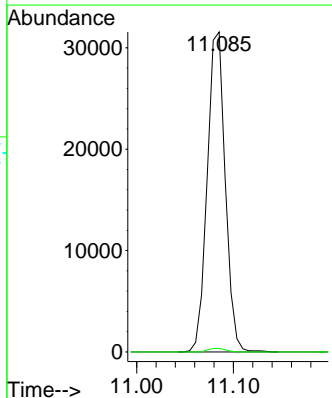
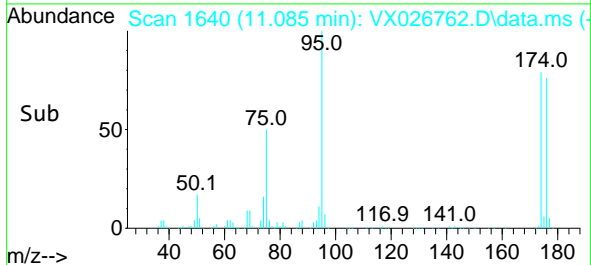
Tgt Ion:152 Resp: 76149  
 Ion Ratio Lower Upper  
 152 100  
 115 60.5 44.2 132.6  
 150 157.2 0.0 348.2

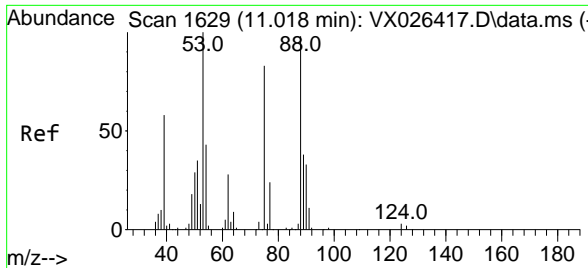


#76  
 1,2,3-Trichloropropane  
 Concen: 24.361 ug/l  
 RT: 11.085 min Scan# 1640  
 Delta R.T. -0.159 min  
 Lab File: VX026762.D  
 Acq: 03 Feb 2022 16:49



Tgt Ion: 75 Resp: 40844  
 Ion Ratio Lower Upper  
 75 100  
 77 1.1 18.3 54.8#





#81  
 trans-1,4-Dichloro-2-butene  
 Concen: 74.174 ug/l  
 RT: 11.085 min Scan# 10  
 Delta R.T. 0.067 min  
 Lab File: VX026762.D  
 Acq: 03 Feb 2022 16:49

Instrument :  
 MSVOA\_X  
 ClientSampleId :  
 M-PHC

Tgt Ion: 75 Resp: 40844

Ion	Ratio	Lower	Upper
75	100		
53	0.0	94.0	141.0#
89	0.0	37.0	55.4#

