

Data Path : Z:\voasrv\HPCHEM1\MSVOA_X\Data\VX020322\
 Data File : VX026766.D
 Acq On : 03 Feb 2022 18:22
 Operator : JC/MD
 Sample : N1392-01
 Misc : 5.0mL/MSVOA_X/WATER
 ALS Vial : 15 Sample Multiplier: 1

Instrument :
 MSVOA_X
 ClientSampleId :
 OILY-WATER-NWB-1735

Quant Time: Feb 04 02:34:44 2022
 Quant Method : Z:\voasrv\HPCHEM1\MSVOA_X\Method\82X011122W.M
 Quant Title : SW846 8260
 QLast Update : Tue Jan 11 14:45:13 2022
 Response via : Initial Calibration

Compound	R.T.	QIon	Response	Conc	Units	Dev(Min)

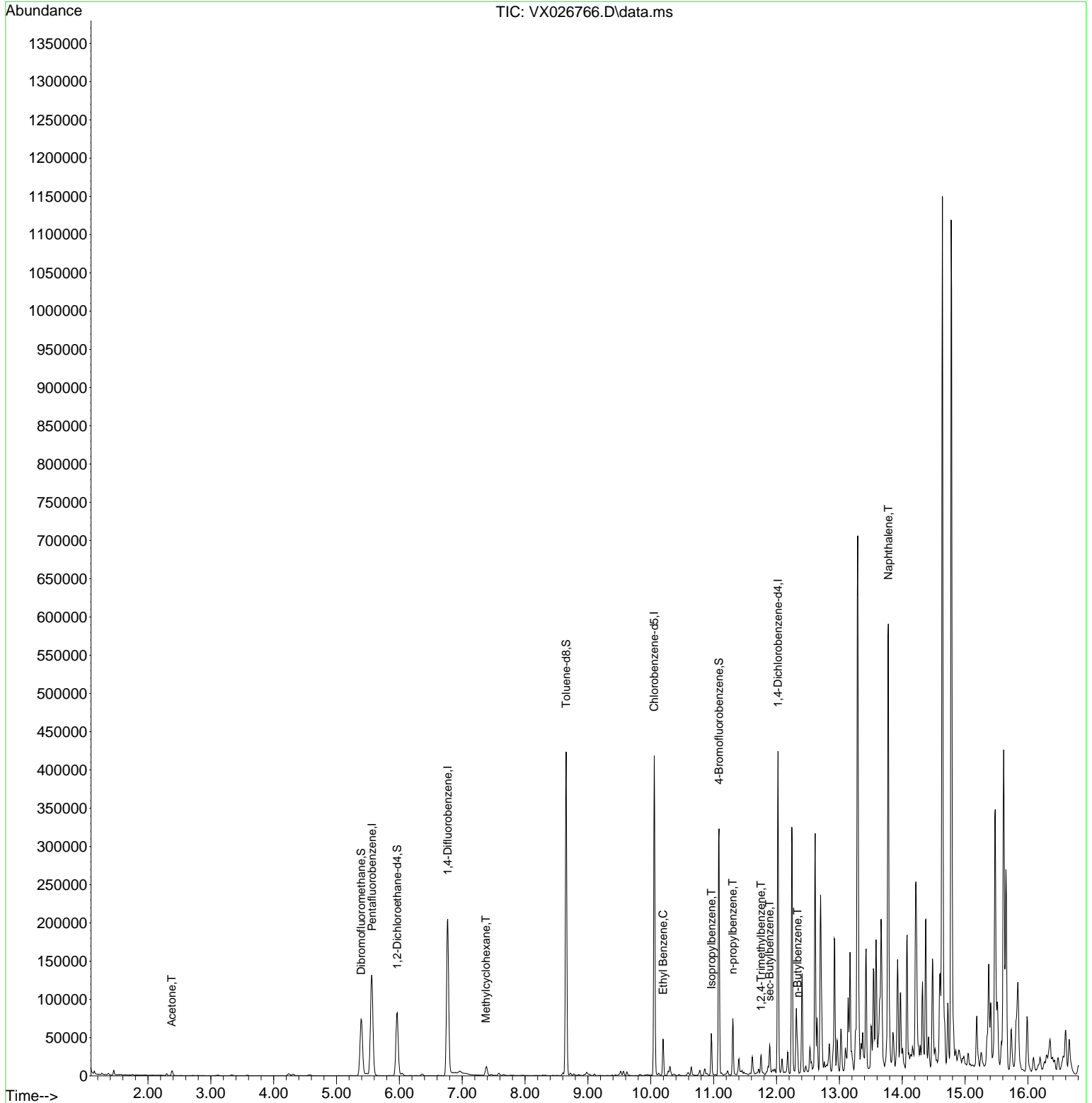
Internal Standards						
1) Pentafluorobenzene	5.562	168	124927	50.000	ug/l	0.00
34) 1,4-Difluorobenzene	6.769	114	211084	50.000	ug/l	0.00
63) Chlorobenzene-d5	10.055	117	185978	50.000	ug/l	0.00
72) 1,4-Dichlorobenzene-d4	12.024	152	83471	50.000	ug/l	0.00
System Monitoring Compounds						
33) 1,2-Dichloroethane-d4	5.964	65	79944	45.810	ug/l	0.00
Spiked Amount	50.000	Range 78 - 117	Recovery	=	91.620%	
35) Dibromofluoromethane	5.391	113	65295	47.901	ug/l	0.00
Spiked Amount	50.000	Range 75 - 124	Recovery	=	95.800%	
50) Toluene-d8	8.653	98	242618	49.392	ug/l	0.00
Spiked Amount	50.000	Range 92 - 112	Recovery	=	98.780%	
62) 4-Bromofluorobenzene	11.085	95	88193	50.542	ug/l	0.00
Spiked Amount	50.000	Range 83 - 123	Recovery	=	101.080%	
Target Compounds						
						Qvalue
16) Acetone	2.379	43	7516	8.445	ug/l	99
39) Methylcyclohexane	7.379	83	5233	2.016	ug/l	95
67) Ethyl Benzene	10.195	91	26727	3.755	ug/l	99
73) Isopropylbenzene	10.963	105	26680	3.899	ug/l	100
78) n-propylbenzene	11.305	91	44113	5.654	ug/l	100
84) 1,2,4-Trimethylbenzene	11.756	105	10190	1.806	ug/l	96
85) sec-Butylbenzene	11.890	105	18475	2.712	ug/l	89
89) n-Butylbenzene	12.335	91	20379	4.156	ug/l #	63
95) Naphthalene	13.780	128	364032	61.311	ug/l	99

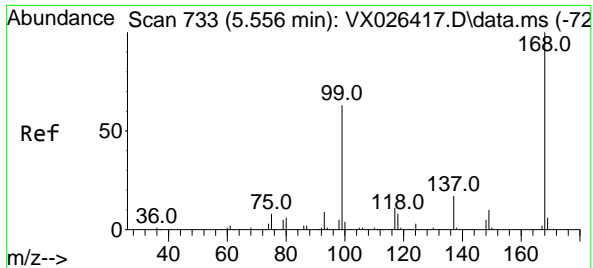
(#) = qualifier out of range (m) = manual integration (+) = signals summed

Data Path : Z:\voasrv\HPCHEM1\MSVOA_X\Data\VX020322\
 Data File : VX026766.D
 Acq On : 03 Feb 2022 18:22
 Operator : JC/MD
 Sample : N1392-01
 Misc : 5.0mL/MSVOA_X/WATER
 ALS Vial : 15 Sample Multiplier: 1

Instrument :
 MSVOA_X
ClientSampleId :
 OILY-WATER-NWB-1735

Quant Time: Feb 04 02:34:44 2022
 Quant Method : Z:\voasrv\HPCHEM1\MSVOA_X\Method\82X011122W.M
 Quant Title : SW846 8260
 QLast Update : Tue Jan 11 14:45:13 2022
 Response via : Initial Calibration

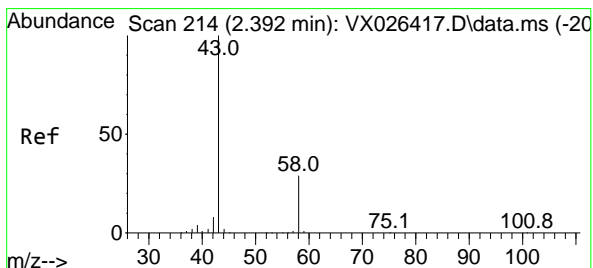
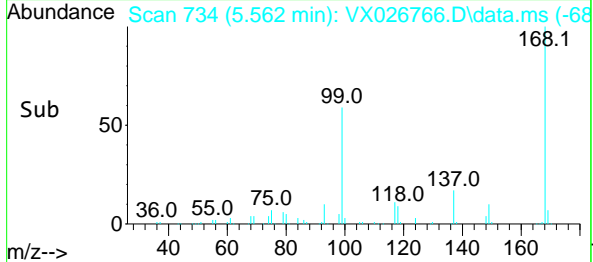
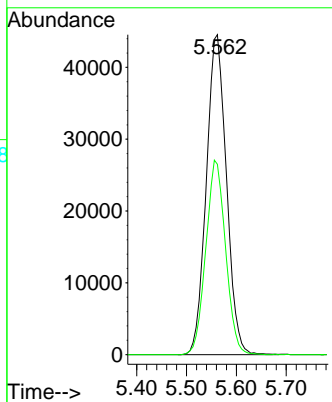
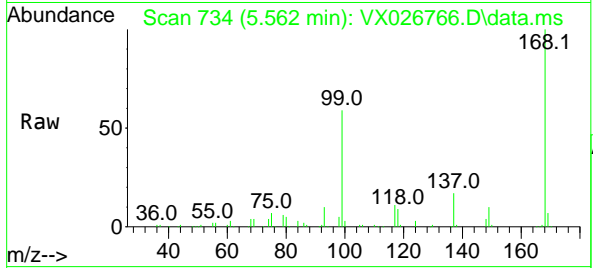




#1
 Pentafluorobenzene
 Concen: 50.000 ug/l
 RT: 5.562 min Scan# 71
 Delta R.T. 0.006 min
 Lab File: VX026766.D
 Acq: 03 Feb 2022 18:22

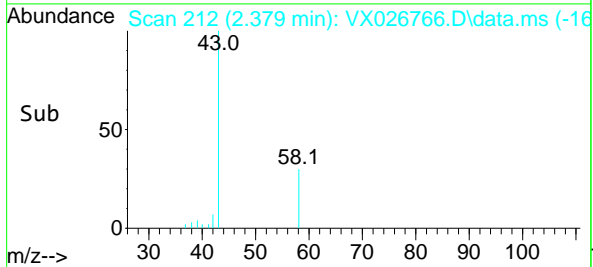
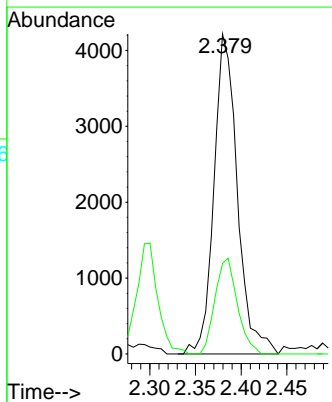
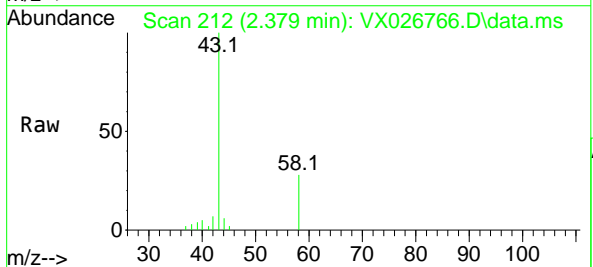
Instrument : MSVOA_X
 ClientSampleId : OILY-WATER-NWB-1735

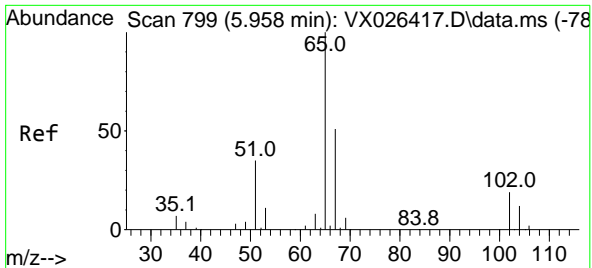
Tgt Ion:168 Resp: 124927
 Ion Ratio Lower Upper
 168 100
 99 59.5 50.3 75.5



#16
 Acetone
 Concen: 8.445 ug/l
 RT: 2.379 min Scan# 212
 Delta R.T. -0.012 min
 Lab File: VX026766.D
 Acq: 03 Feb 2022 18:22

Tgt Ion: 43 Resp: 7516
 Ion Ratio Lower Upper
 43 100
 58 28.3 23.0 34.6

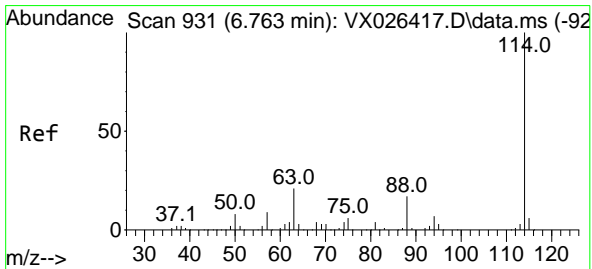
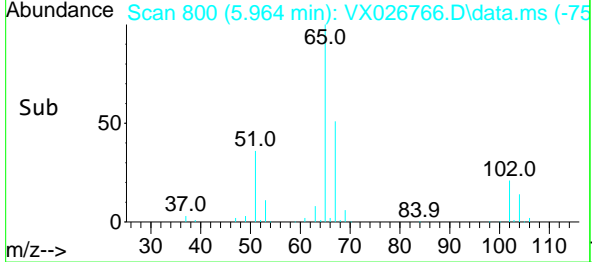
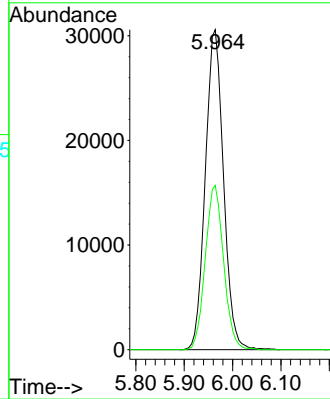
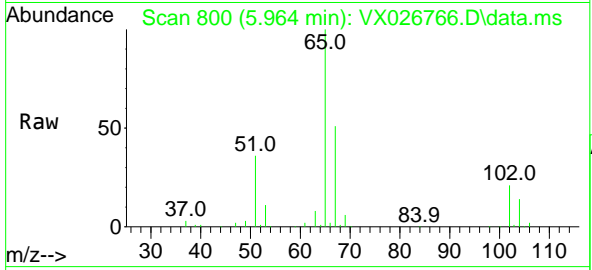




#33
 1,2-Dichloroethane-d4
 Concen: 45.810 ug/l
 RT: 5.964 min Scan# 80
 Delta R.T. 0.006 min
 Lab File: VX026766.D
 Acq: 03 Feb 2022 18:22

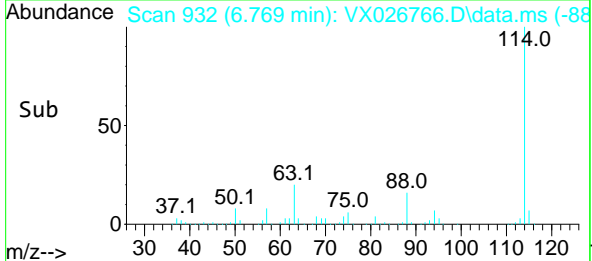
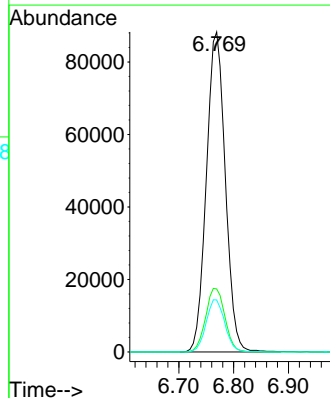
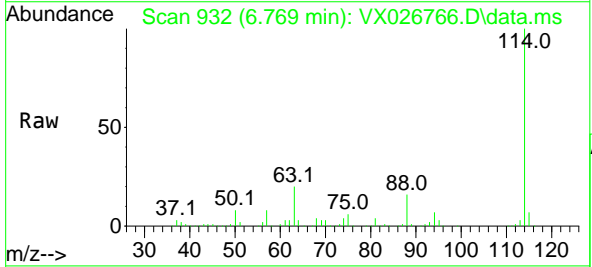
Instrument : MSVOA_X
 ClientSampleId : OILY-WATER-NWB-1735

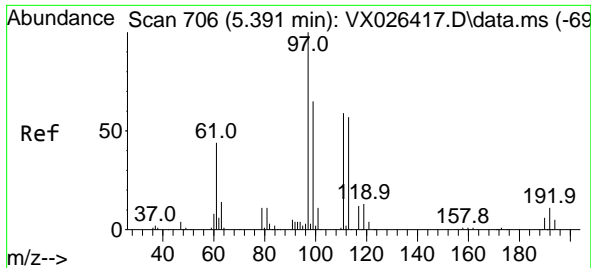
Tgt Ion: 65 Resp: 79944
 Ion Ratio Lower Upper
 65 100
 67 51.8 0.0 100.8



#34
 1,4-Difluorobenzene
 Concen: 50.000 ug/l
 RT: 6.769 min Scan# 932
 Delta R.T. 0.006 min
 Lab File: VX026766.D
 Acq: 03 Feb 2022 18:22

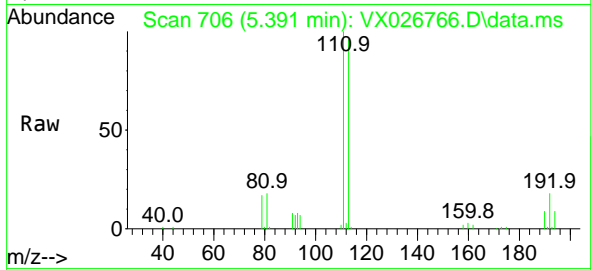
Tgt Ion:114 Resp: 211084
 Ion Ratio Lower Upper
 114 100
 63 19.7 0.0 42.8
 88 16.2 0.0 33.0





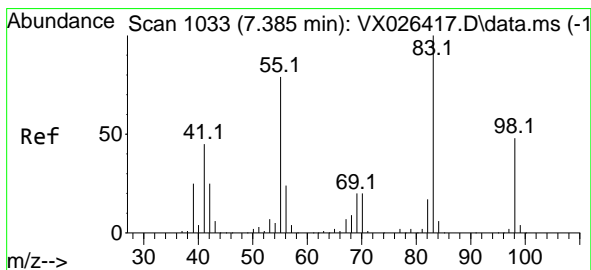
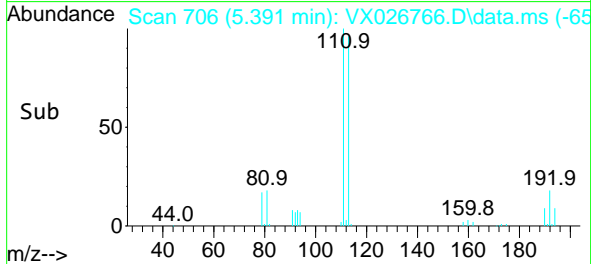
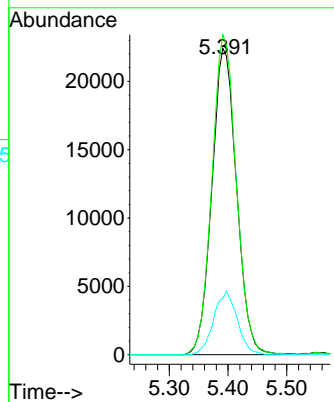
#35
 Dibromofluoromethane
 Concen: 47.901 ug/l
 RT: 5.391 min Scan# 706
 Delta R.T. -0.000 min
 Lab File: VX026766.D
 Acq: 03 Feb 2022 18:22

Instrument : MSVOA_X
 ClientSampleId : OILY-WATER-NWB-1735



Tgt Ion: 113 Resp: 65295

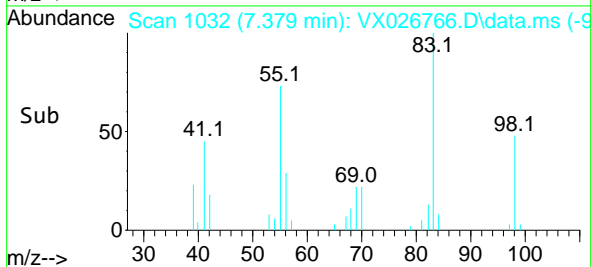
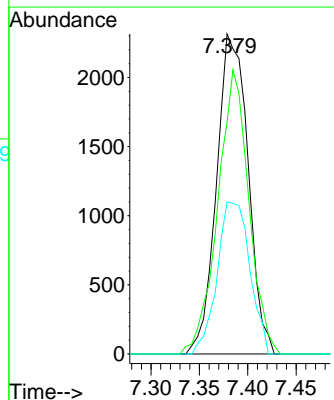
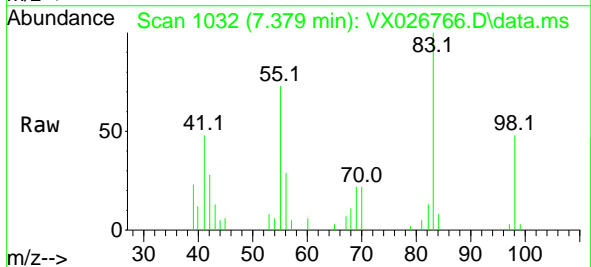
Ion	Ratio	Lower	Upper
113	100		
111	103.5	81.2	121.8
192	19.8	15.0	22.4

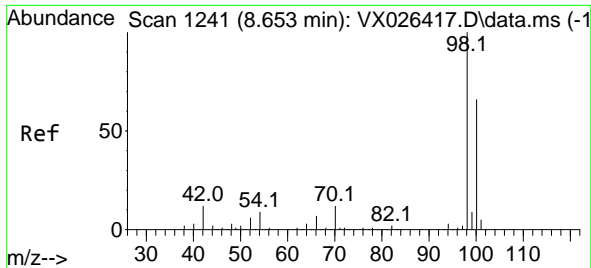


#39
 Methylcyclohexane
 Concen: 2.016 ug/l
 RT: 7.379 min Scan# 1032
 Delta R.T. -0.006 min
 Lab File: VX026766.D
 Acq: 03 Feb 2022 18:22

Tgt Ion: 83 Resp: 5233

Ion	Ratio	Lower	Upper
83	100		
55	72.5	63.6	95.4
98	47.6	38.4	57.6

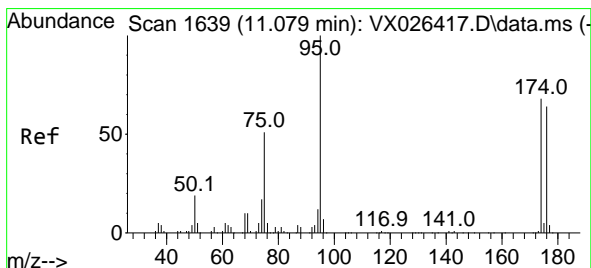
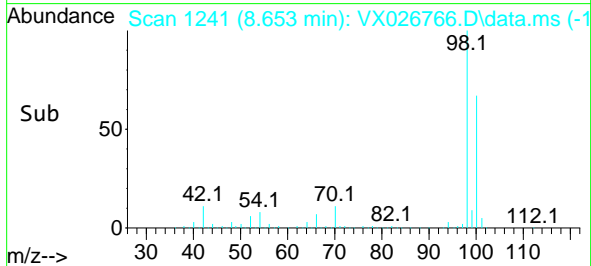
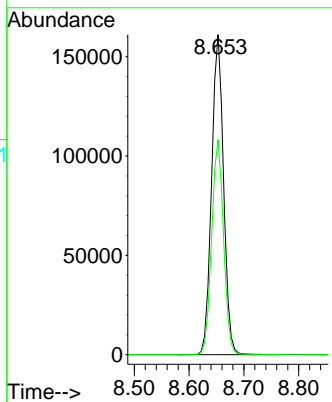
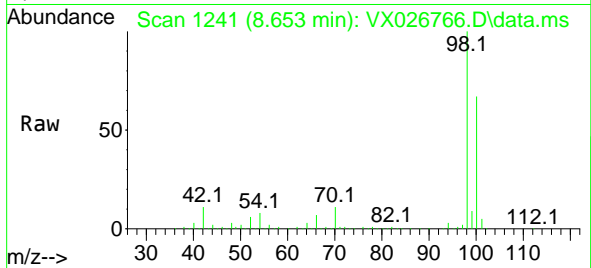




#50
 Toluene-d8
 Concen: 49.392 ug/l
 RT: 8.653 min Scan# 11
 Delta R.T. -0.000 min
 Lab File: VX026766.D
 Acq: 03 Feb 2022 18:22

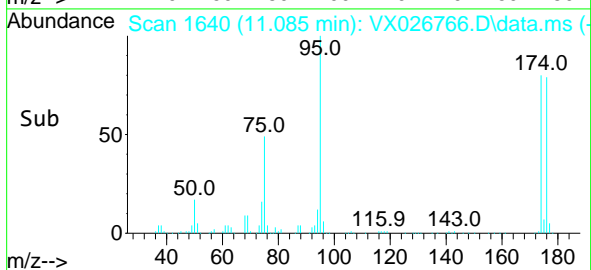
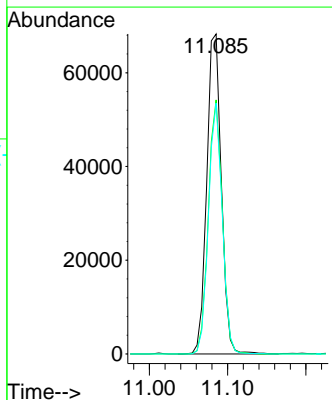
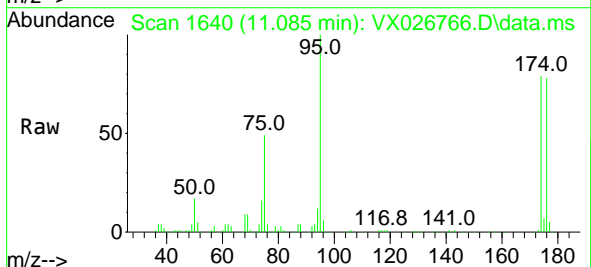
Instrument :
 MSVOA_X
 ClientSampleId :
 OILY-WATER-NWB-1735

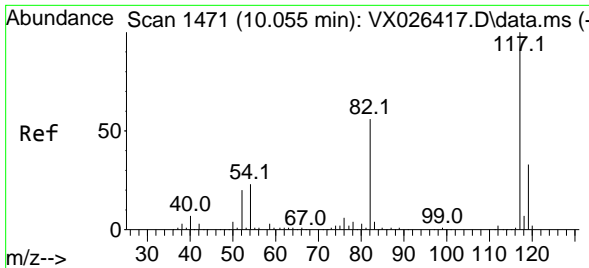
Tgt Ion: 98 Resp: 242618
 Ion Ratio Lower Upper
 98 100
 100 67.0 53.2 79.8



#62
 4-Bromofluorobenzene
 Concen: 50.542 ug/l
 RT: 11.085 min Scan# 1640
 Delta R.T. 0.006 min
 Lab File: VX026766.D
 Acq: 03 Feb 2022 18:22

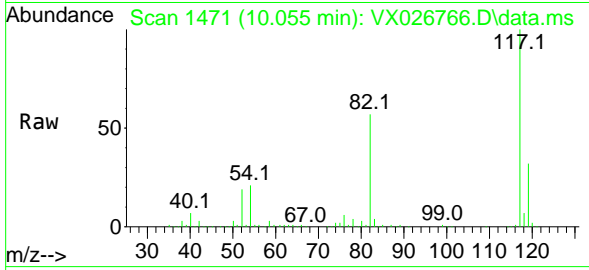
Tgt Ion: 95 Resp: 88193
 Ion Ratio Lower Upper
 95 100
 174 76.0 0.0 148.6
 176 74.0 0.0 141.4





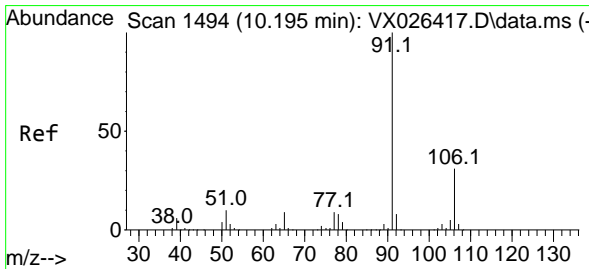
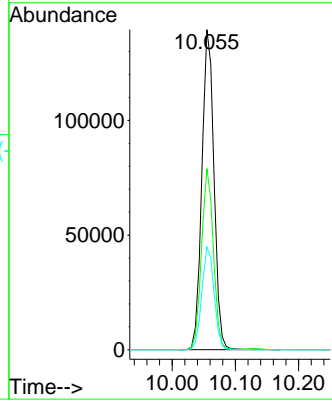
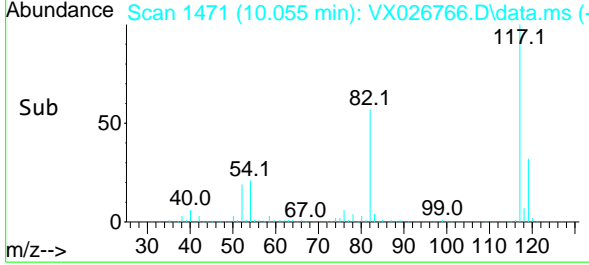
#63
 Chlorobenzene-d5
 Concen: 50.000 ug/l
 RT: 10.055 min Scan# 1471
 Delta R.T. -0.000 min
 Lab File: VX026766.D
 Acq: 03 Feb 2022 18:22

Instrument : MSVOA_X
 ClientSampleId : OILY-WATER-NWB-1735

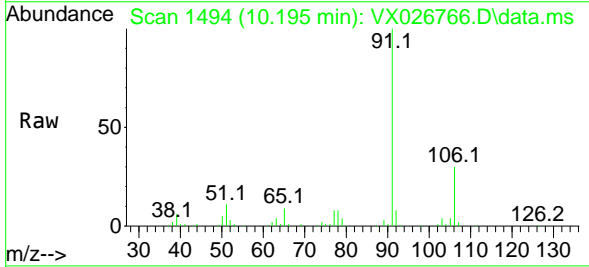


Tgt Ion:117 Resp: 185978

Ion	Ratio	Lower	Upper
117	100		
82	56.6	45.2	67.8
119	32.0	26.2	39.2

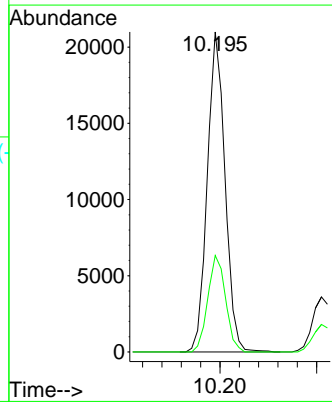
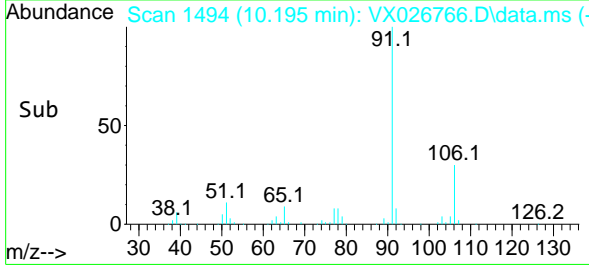


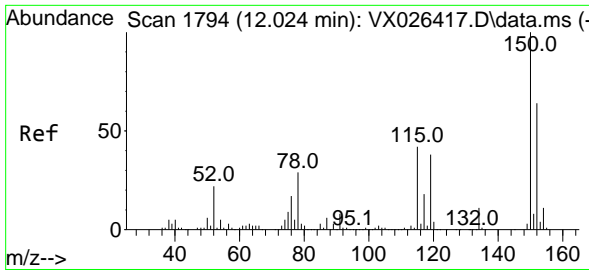
#67
 Ethyl Benzene
 Concen: 3.755 ug/l
 RT: 10.195 min Scan# 1494
 Delta R.T. -0.000 min
 Lab File: VX026766.D
 Acq: 03 Feb 2022 18:22



Tgt Ion: 91 Resp: 26727

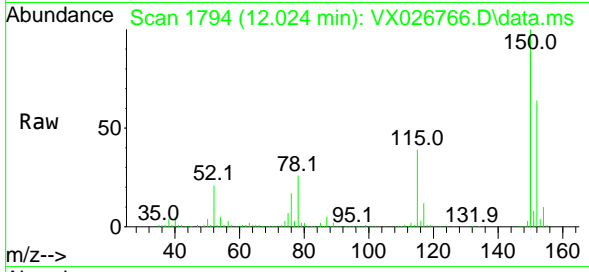
Ion	Ratio	Lower	Upper
91	100		
106	30.2	24.7	37.1



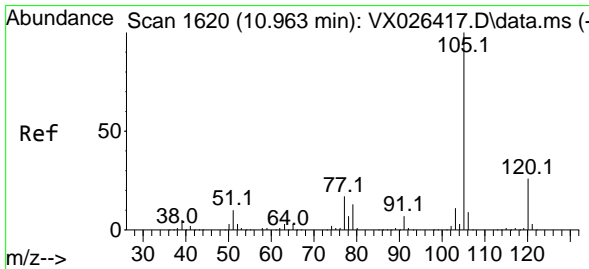
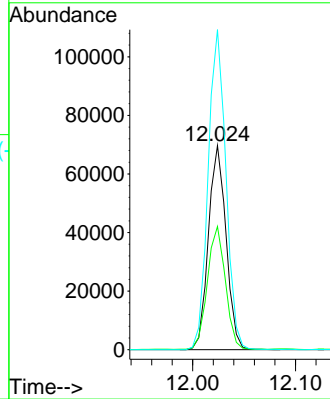
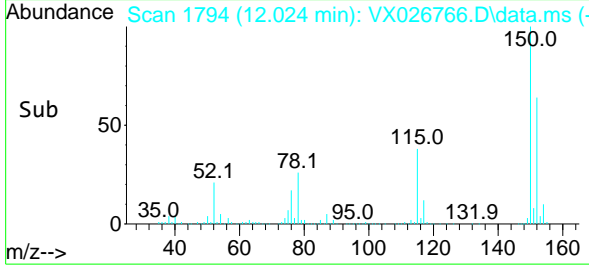


#72
 1,4-Dichlorobenzene-d4
 Concen: 50.000 ug/l
 RT: 12.024 min Scan# 1794
 Delta R.T. -0.000 min
 Lab File: VX026766.D
 Acq: 03 Feb 2022 18:22

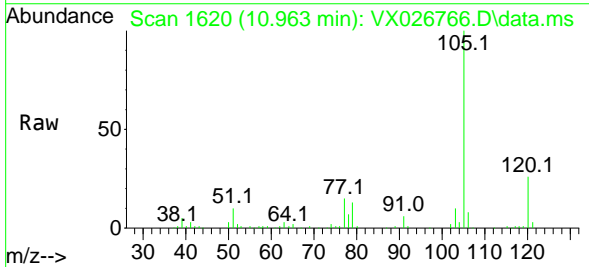
Instrument : MSVOA_X
 ClientSampleId : OILY-WATER-NWB-1735



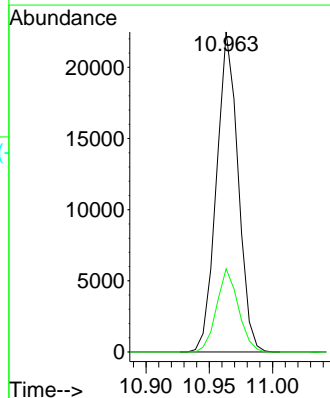
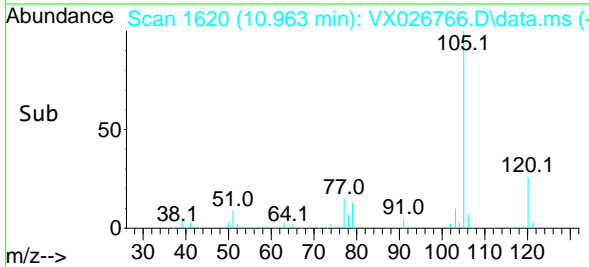
Tgt Ion:152 Resp: 83471
 Ion Ratio Lower Upper
 152 100
 115 61.3 44.2 132.6
 150 157.5 0.0 348.2

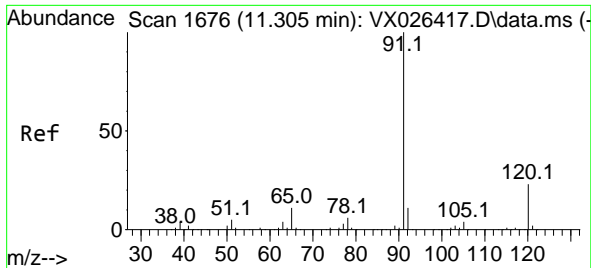


#73
 Isopropylbenzene
 Concen: 3.899 ug/l
 RT: 10.963 min Scan# 1620
 Delta R.T. -0.000 min
 Lab File: VX026766.D
 Acq: 03 Feb 2022 18:22



Tgt Ion:105 Resp: 26680
 Ion Ratio Lower Upper
 105 100
 120 26.0 13.1 39.1

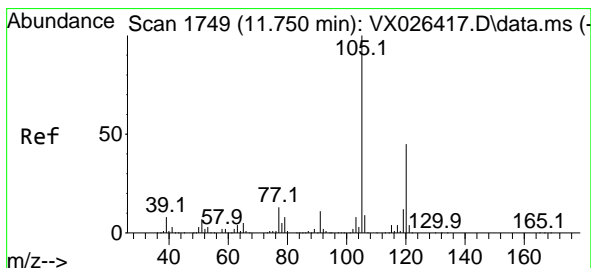
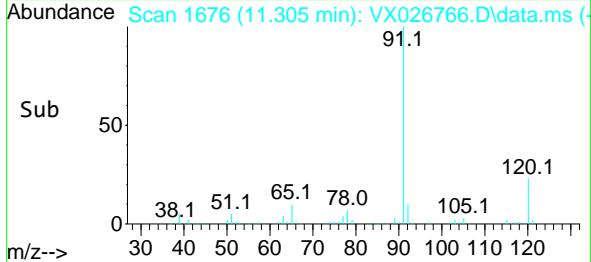
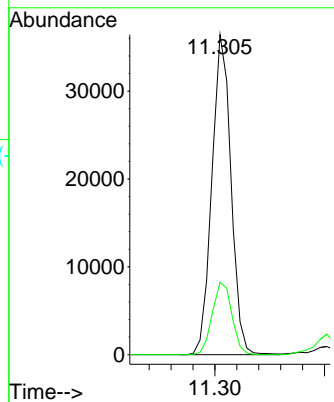
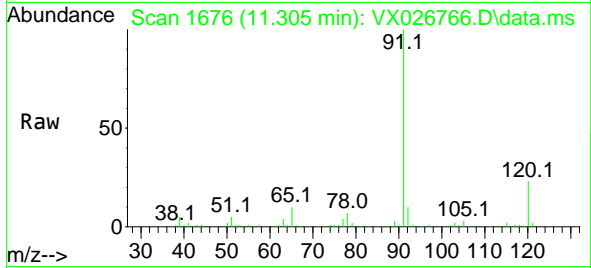




#78
 n-propylbenzene
 Concen: 5.654 ug/l
 RT: 11.305 min Scan# 11
 Delta R.T. -0.000 min
 Lab File: VX026766.D
 Acq: 03 Feb 2022 18:22

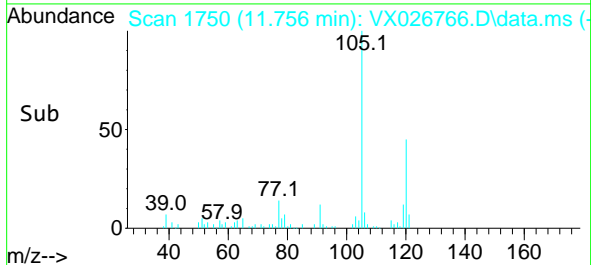
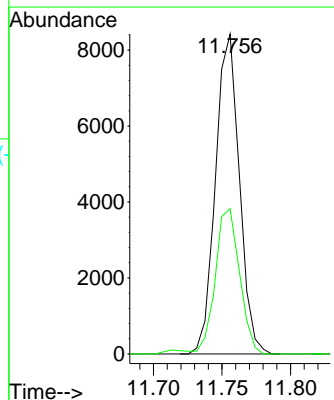
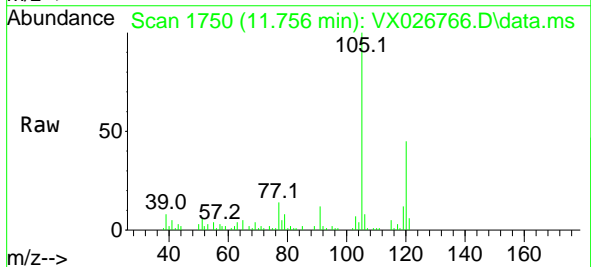
Instrument : MSVOA_X
 ClientSampleId : OILY-WATER-NWB-1735

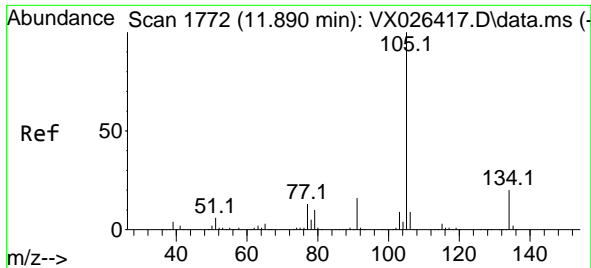
Tgt Ion: 91 Resp: 44113
 Ion Ratio Lower Upper
 91 100
 120 23.2 11.6 34.7



#84
 1,2,4-Trimethylbenzene
 Concen: 1.806 ug/l
 RT: 11.756 min Scan# 1750
 Delta R.T. 0.006 min
 Lab File: VX026766.D
 Acq: 03 Feb 2022 18:22

Tgt Ion: 105 Resp: 10190
 Ion Ratio Lower Upper
 105 100
 120 46.1 21.9 65.5

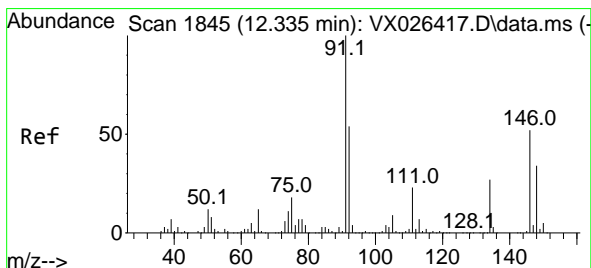
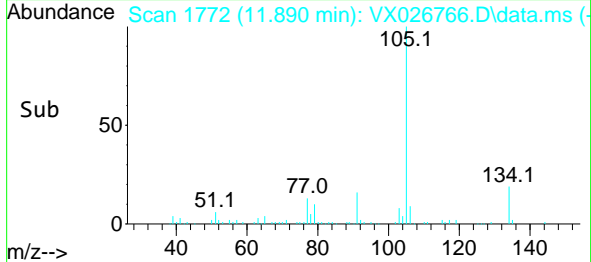
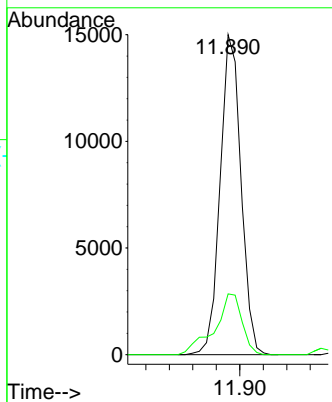
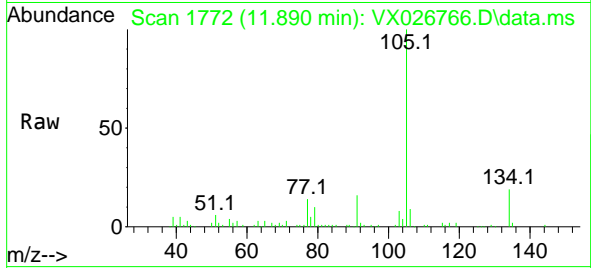




#85
 sec-Butylbenzene
 Concen: 2.712 ug/l
 RT: 11.890 min Scan# 111
 Delta R.T. -0.000 min
 Lab File: VX026766.D
 Acq: 03 Feb 2022 18:22

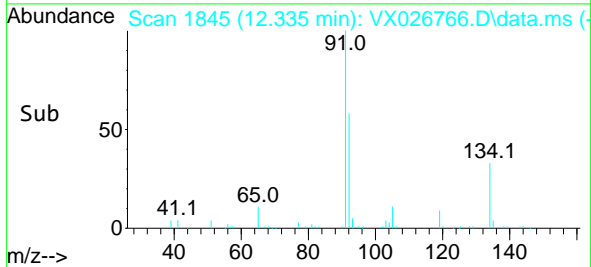
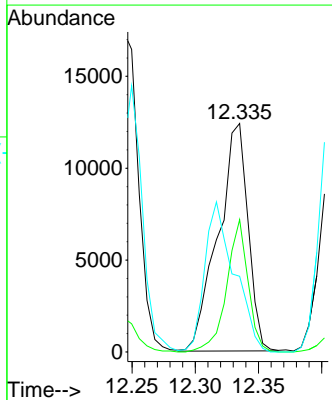
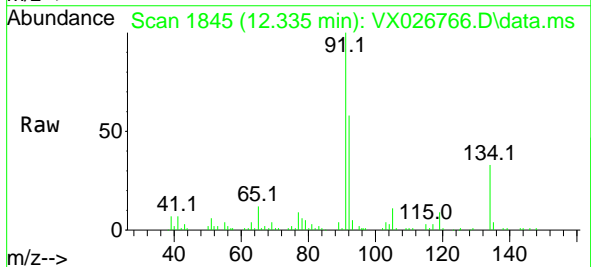
Instrument : MSVOA_X
 ClientSampleId : OILY-WATER-NWB-1735

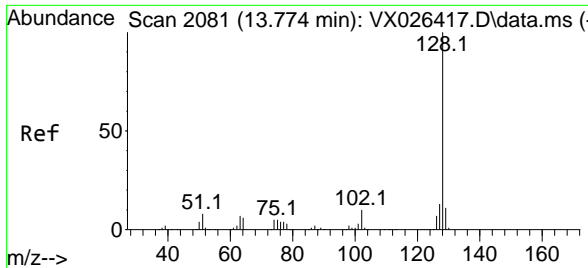
Tgt Ion:105 Resp: 18475
 Ion Ratio Lower Upper
 105 100
 134 25.0 10.1 30.1



#89
 n-Butylbenzene
 Concen: 4.156 ug/l
 RT: 12.335 min Scan# 1845
 Delta R.T. -0.000 min
 Lab File: VX026766.D
 Acq: 03 Feb 2022 18:22

Tgt Ion: 91 Resp: 20379
 Ion Ratio Lower Upper
 91 100
 92 41.5 27.2 81.6
 134 65.5 13.1 39.1#





#95
 Naphthalene
 Concen: 61.311 ug/l
 RT: 13.780 min Scan# 2082
 Delta R.T. 0.006 min
 Lab File: VX026766.D
 Acq: 03 Feb 2022 18:22

Instrument : MSVOA_X
 ClientSampleId : OILY-WATER-NWB-1735

Tgt Ion:128 Resp: 364032

Ion	Ratio	Lower	Upper
128	100		
127	13.1	10.3	15.5
129	11.6	8.7	13.1

