

Data Path : Z:\VOASRV\HPCHEM1\MSVOA X\DATA\VX020420\
 Data File : VX014807.D
 Acq On : 04 Feb 2020 14:40
 Operator : JC/SP
 Sample : IBLK
 Misc : 5.0mL/MSVOA X/WATER
 ALS Vial : 9 Sample Multiplier: 1

Instrument :
 MSVOA_X
 ClientSampleID :
 IBLK

Quant Time: Feb 05 03:03:18 2020
 Quant Method : Z:\VOASRV\HPCHEM1\MSVOA_X\METHOD\82X012220W.M
 Quant Title : SW846 8260
 QLast Update : Wed Jan 22 12:35:15 2020
 Response via : Initial Calibration

Internal Standards	R.T.	QIon	Response	Conc	Units	Dev(Min)
1) Pentafluorobenzene	5.65	168	447994	50.00	ug/l	0.00
34) 1,4-Difluorobenzene	6.85	114	703041	50.00	ug/l	0.00
63) Chlorobenzene-d5	10.10	117	648397	50.00	ug/l	0.00
72) 1,4-Dichlorobenzene-d4	12.07	152	314789	50.00	ug/l	0.00

System Monitoring Compounds

33) 1,2-Dichloroethane-d4	6.05	65	257675	49.25	ug/l	0.00
Spiked Amount	50.000		Recovery	=	98.50%	
35) Dibromofluoromethane	5.48	113	212730	47.95	ug/l	0.00
Spiked Amount	50.000		Recovery	=	95.90%	
50) Toluene-d8	8.71	98	839116	49.20	ug/l	0.00
Spiked Amount	50.000		Recovery	=	98.40%	
62) 4-Bromofluorobenzene	11.13	95	292745	48.19	ug/l	0.00
Spiked Amount	50.000		Recovery	=	96.38%	

Target Compounds

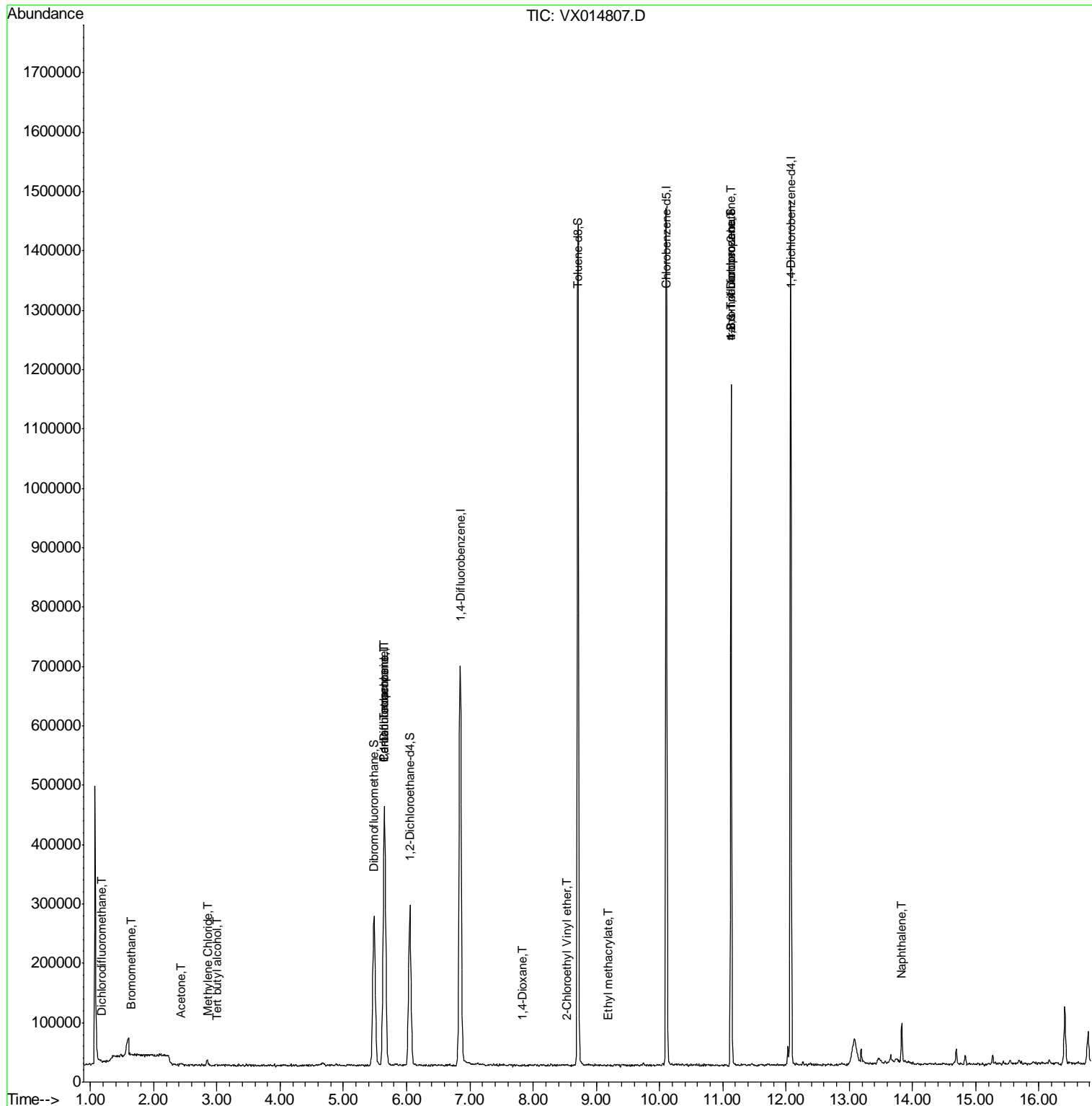
					Qvalue	
2) Dichlorodifluoromethane	1.18	85	301	0.581	ug/l #	42
5) Bromomethane	1.64	94	1501	0.337	ug/l	87
6) Chloroethane	1.75	64	797	Below Cal	#	43
11) Tert butyl alcohol	3.01	59	954	0.812	ug/l #	1
16) Acetone	2.43	43	4649	1.771	ug/l	98
20) Methylene Chloride	2.84	84	4831	0.911	ug/l #	88
36) 1,1-Dichloropropene	5.65	75	30879	4.727	ug/l #	52
38) Carbon Tetrachloride	5.65	117	40422	6.479	ug/l #	14
41) Methacrylonitrile	5.04	41	466	Below Cal	#	52
49) 1,4-Dioxane	7.83	88	178	1.434	ug/l	95
56) Ethyl methacrylate	9.18	69	292	1.817	ug/l #	76
58) 2-Chloroethyl Vinyl ether	8.53	63	552	0.216	ug/l	99
76) 1,2,3-Trichloropropane	11.13	75	146528	20.007	ug/l #	40
81) trans-1,4-Dichloro-2-buten	11.13	75	146528	56.937	ug/l #	10
95) Naphthalene	13.83	128	43859	2.882	ug/l	99

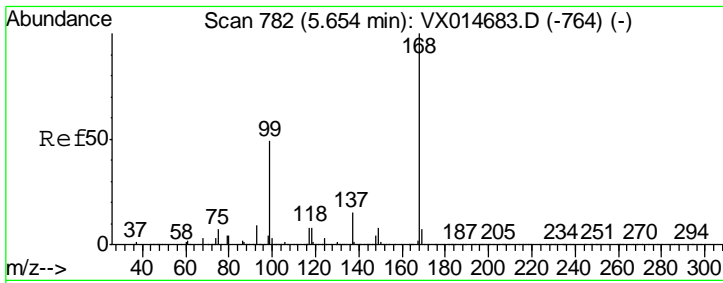
(#) = qualifier out of range (m) = manual integration (+) = signals summed

Data Path : Z:\VOASRV\HPCHEM1\MSVOA X\DATA\VX020420\
 Data File : VX014807.D
 Acq On : 04 Feb 2020 14:40
 Operator : JC/SP
 Sample : IBLK
 Misc : 5.0mL/MSVOA X/WATER
 ALS Vial : 9 Sample Multiplier: 1

Instrument :
 MSVOA_X
 Client Sampled :
 IBLK

Quant Time: Feb 05 03:03:18 2020
 Quant Method : Z:\VOASRV\HPCHEM1\MSVOA_X\METHOD\82X012220W.M
 Quant Title : SW846 8260
 QLast Update : Wed Jan 22 12:35:15 2020
 Response via : Initial Calibration

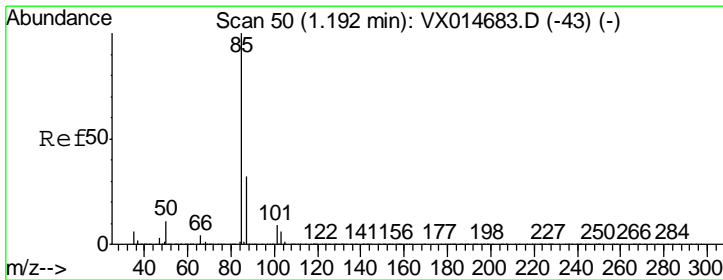
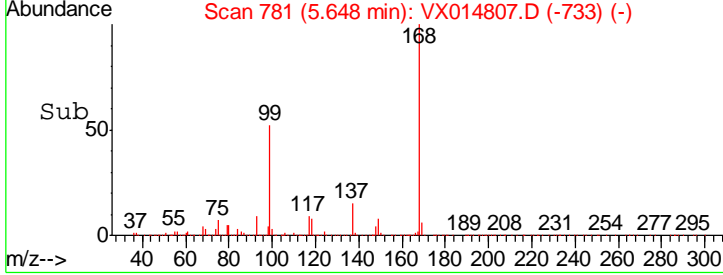
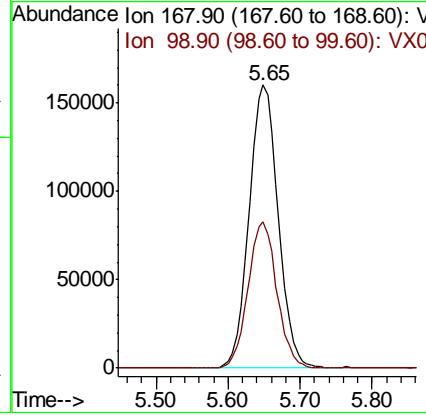
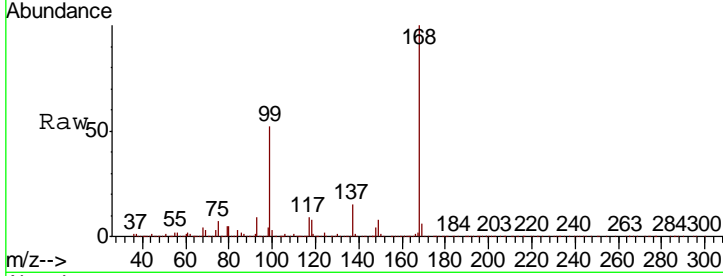




#1
 Pentafluorobenzene
 Concen: 50.000 ug/l
 RT: 5.65 min Scan# 781
 Delta R.T. -0.01 min
 Lab File: VX014807.D
 Acq: 04 Feb 2020 14:40

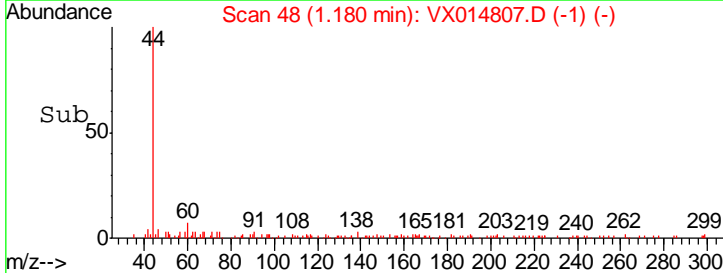
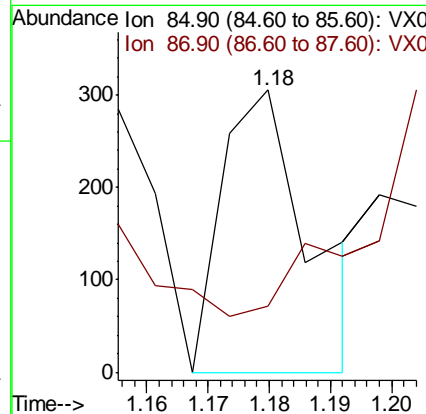
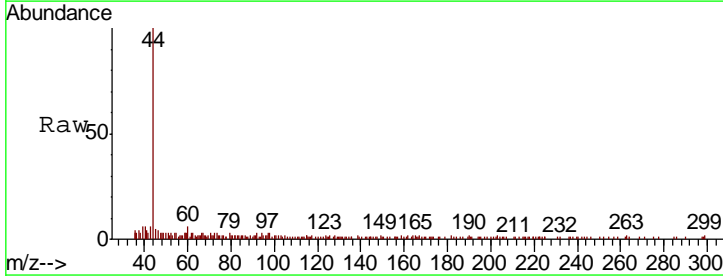
Instrument : MSVOA_X
 ClientSampled : IBLK

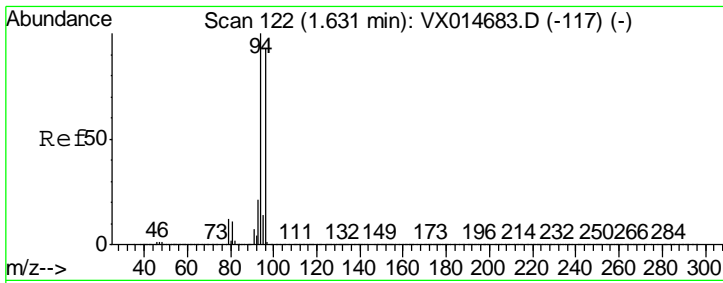
Tgt Ion	Resp	Lower	Upper
168	100		
99	51.8	39.8	59.6



#2
 Dichlorodifluoromethane
 Concen: 0.581 ug/l
 RT: 1.18 min Scan# 48
 Delta R.T. -0.01 min
 Lab File: VX014807.D
 Acq: 04 Feb 2020 14:40

Tgt Ion	Resp	Lower	Upper
85	100		
87	0.0	16.2	48.5#

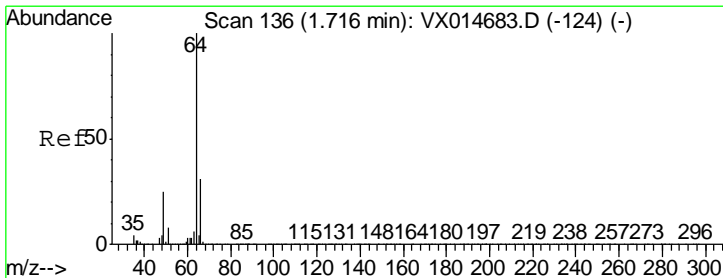
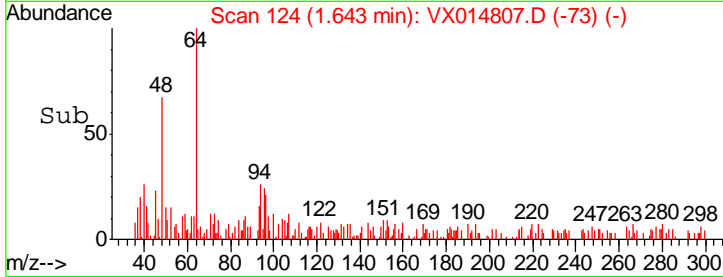
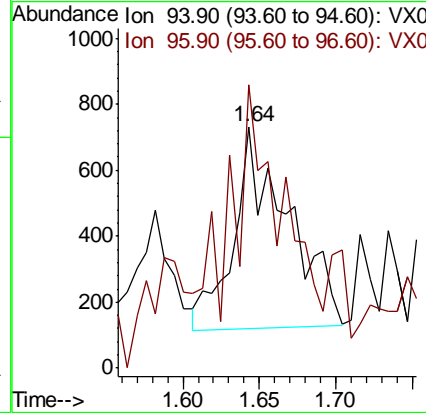
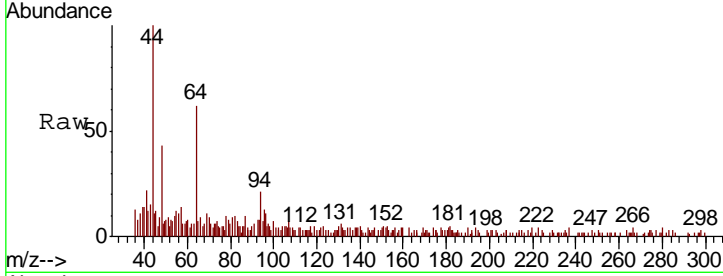




#5
 Bromomethane
 Concen: 0.337 ug/l
 RT: 1.64 min Scan# 124
 Delta R.T. 0.01 min
 Lab File: VX014807.D
 Acq: 04 Feb 2020 14:40

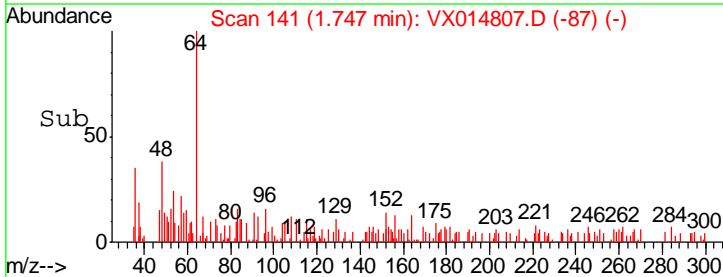
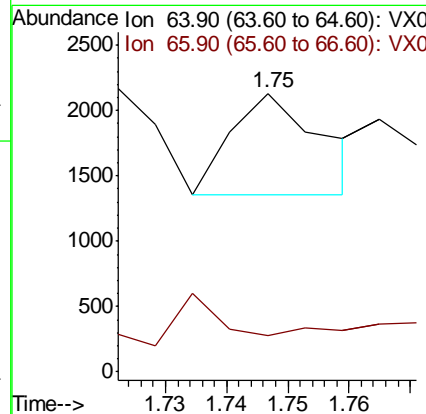
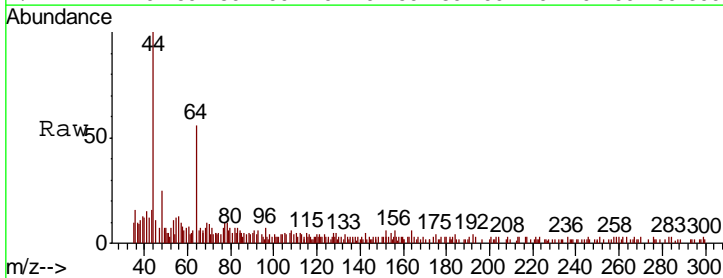
Instrument :
 MSVOA_X
 Client Sampled :
 IBLK

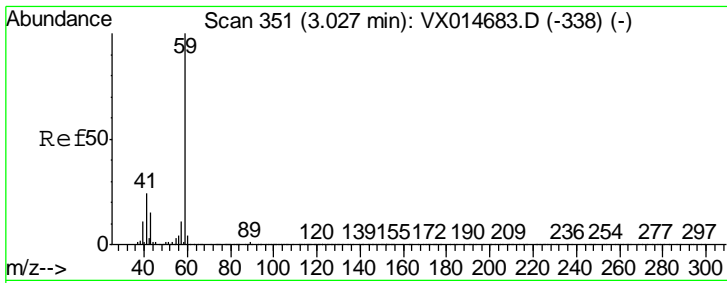
Tgt Ion: 94 Resp: 1501
 Ion Ratio Lower Upper
 94 100
 96 105.7 74.7 112.1



#6
 Chloroethane
 Concen: Below Cal
 RT: 1.75 min Scan# 141
 Delta R.T. 0.03 min
 Lab File: VX014807.D
 Acq: 04 Feb 2020 14:40

Tgt Ion: 64 Resp: 797
 Ion Ratio Lower Upper
 64 100
 66 0.0 25.2 37.8#

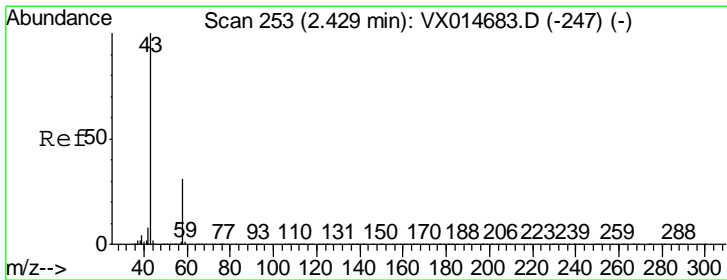
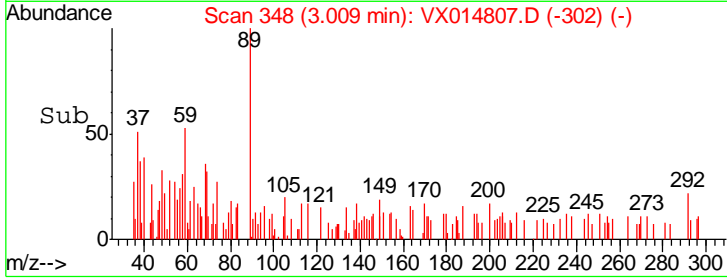
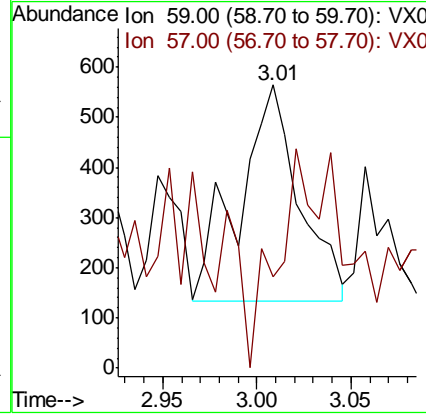
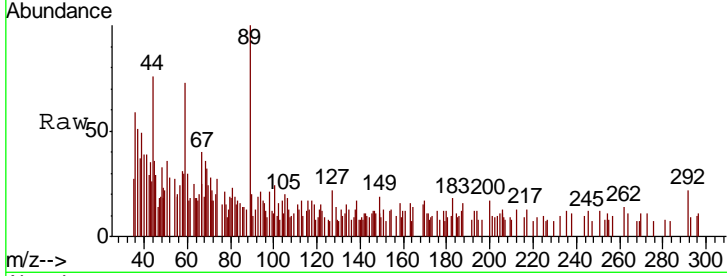




#11
 Tert butyl alcohol
 Concen: 0.812 ug/l
 RT: 3.01 min Scan# 348
 Delta R.T. -0.02 min
 Lab File: VX014807.D
 Acq: 04 Feb 2020 14:40

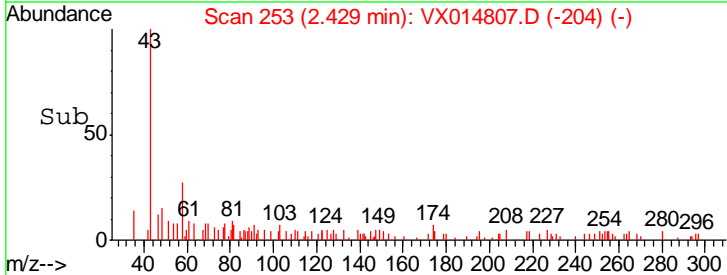
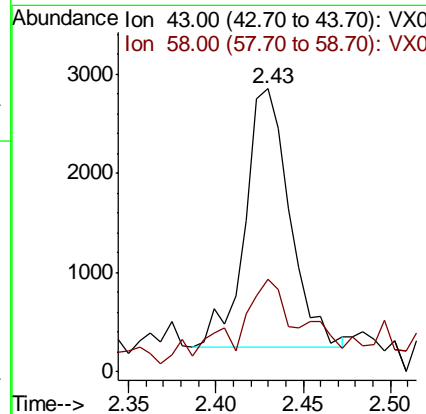
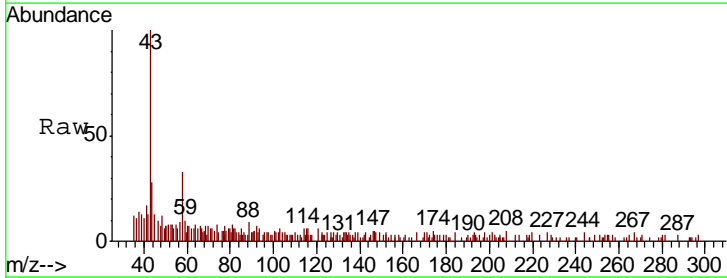
Instrument :
 MSVOA_X
 ClientSampled :
 IBLK

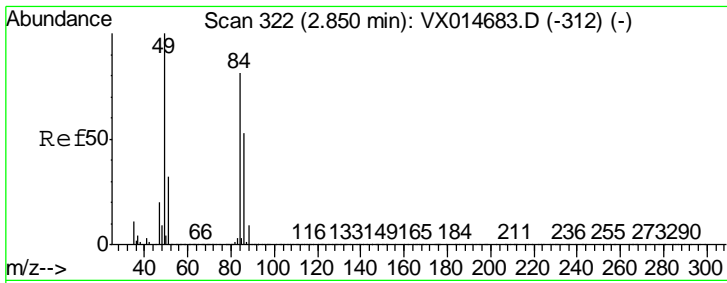
Tgt Ion	Resp	Lower	Upper
59	100		
57	110.9	8.3	12.5#



#16
 Acetone
 Concen: 1.771 ug/l
 RT: 2.43 min Scan# 253
 Delta R.T. 0.00 min
 Lab File: VX014807.D
 Acq: 04 Feb 2020 14:40

Tgt Ion	Resp	Lower	Upper
43	100		
58	29.4	24.5	36.7

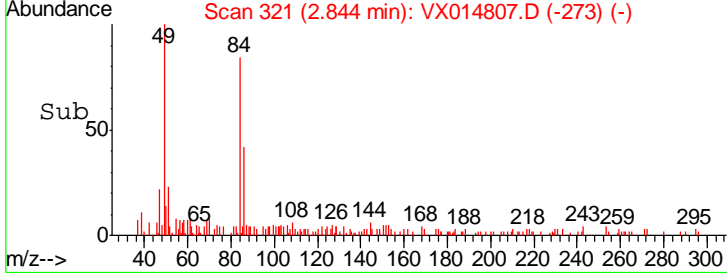
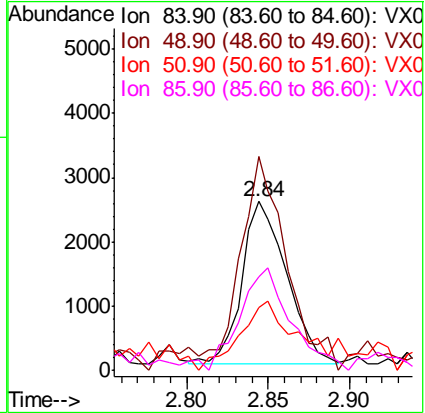
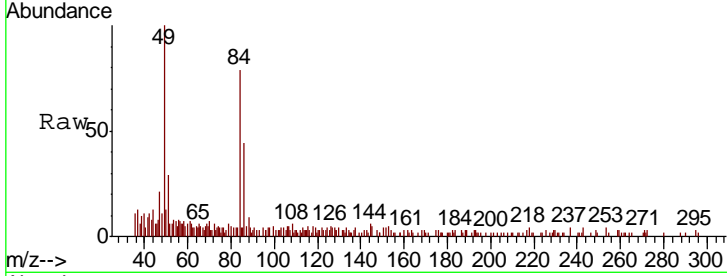




#20
 Methylene Chloride
 Concen: 0.911 ug/l
 RT: 2.84 min Scan# 321
 Delta R.T. -0.01 min
 Lab File: VX014807.D
 Acq: 04 Feb 2020 14:40

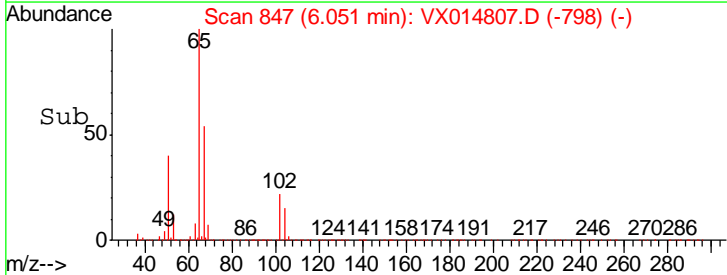
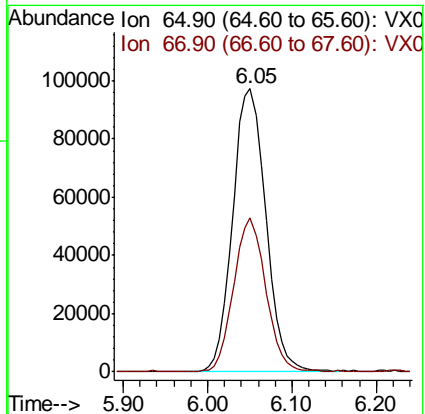
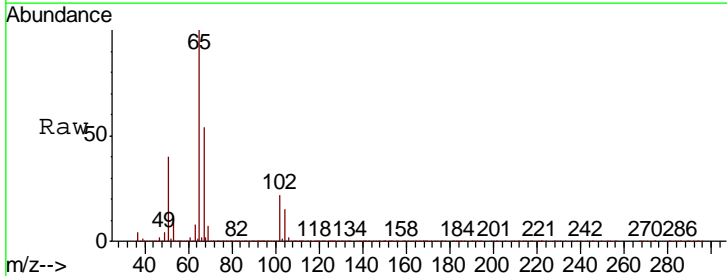
Instrument :
 MSVOA_X
 ClientSampled :
 BLK

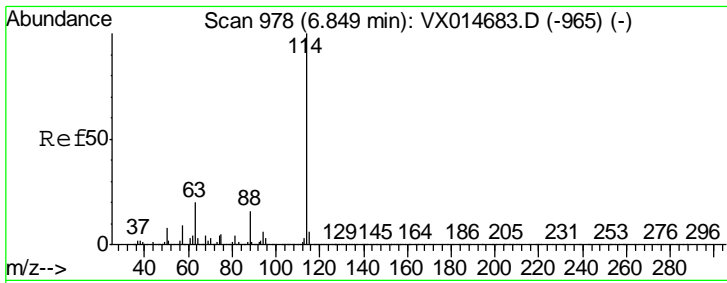
Tgt Ion	Resp	Lower	Upper
84	4831		
49	133.1	98.2	147.4
51	30.3	31.3	46.9#
86	53.0	51.8	77.6



#33
 1,2-Dichloroethane-d4
 Concen: 49.254 ug/l
 RT: 6.05 min Scan# 847
 Delta R.T. 0.00 min
 Lab File: VX014807.D
 Acq: 04 Feb 2020 14:40

Tgt Ion	Resp	Lower	Upper
65	257675		
67	53.2	0.0	107.4

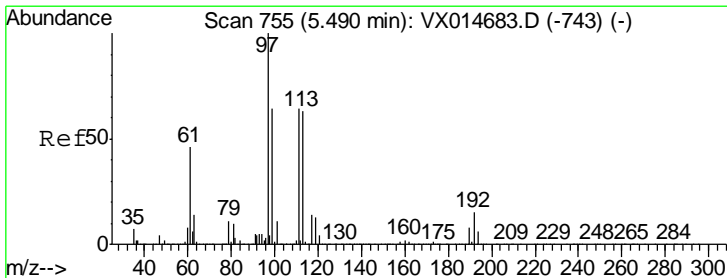
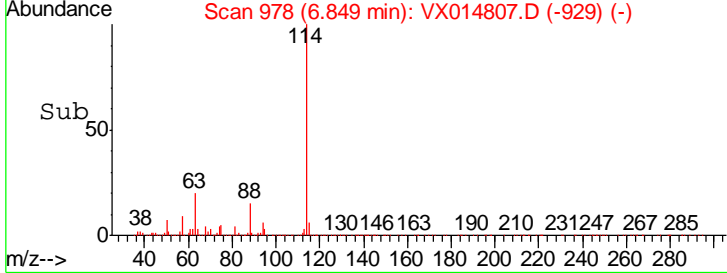
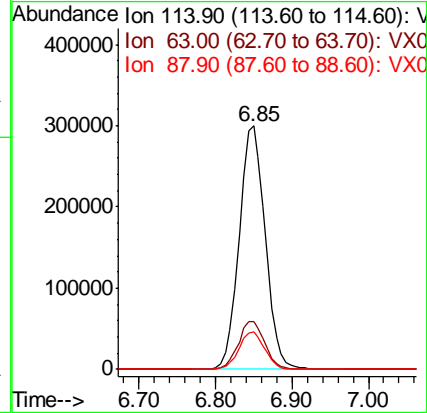
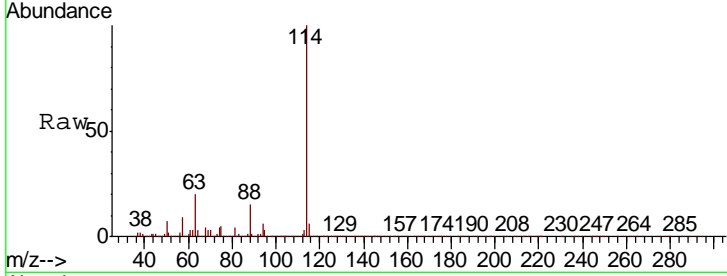




#34
 1,4-Difluorobenzene
 Concen: 50.000 ug/l
 RT: 6.85 min Scan# 978
 Delta R.T. 0.00 min
 Lab File: VX014807.D
 Acq: 04 Feb 2020 14:40

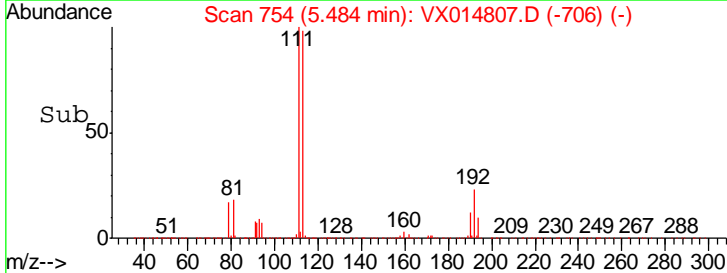
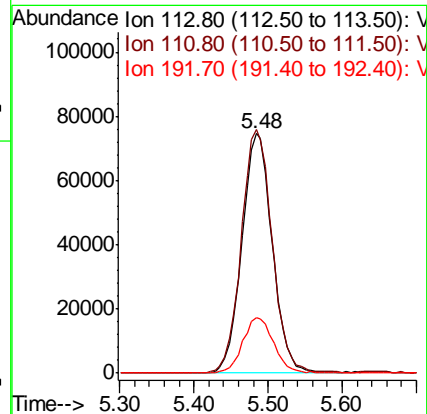
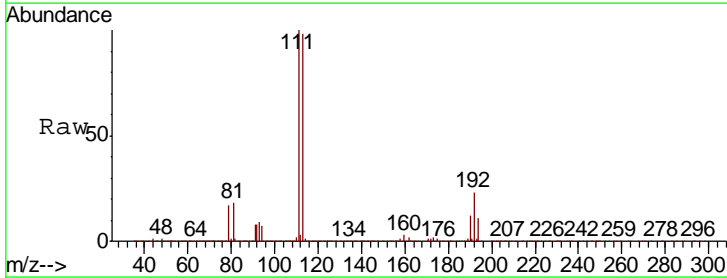
Instrument :
 MSVOA_X
 ClientSampled :
 IBLK

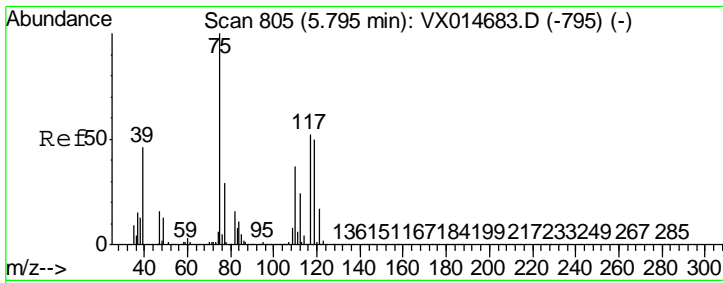
Tgt Ion	Resp	Lower	Upper
114	703041		
63	19.5	0.0	40.6
88	15.3	0.0	31.2



#35
 Dibromofluoromethane
 Concen: 47.954 ug/l
 RT: 5.48 min Scan# 754
 Delta R.T. -0.01 min
 Lab File: VX014807.D
 Acq: 04 Feb 2020 14:40

Tgt Ion	Resp	Lower	Upper
113	212730		
111	103.6	80.7	121.1
192	23.7	18.5	27.7

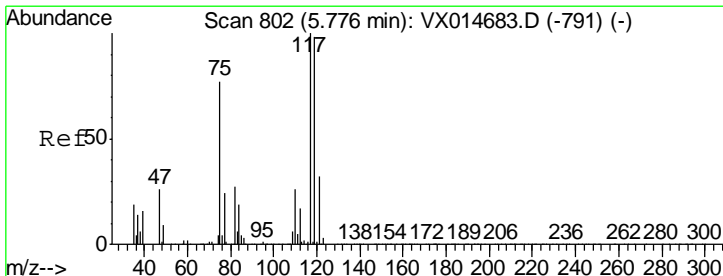
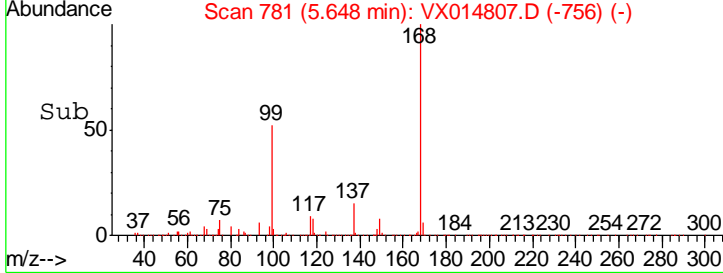
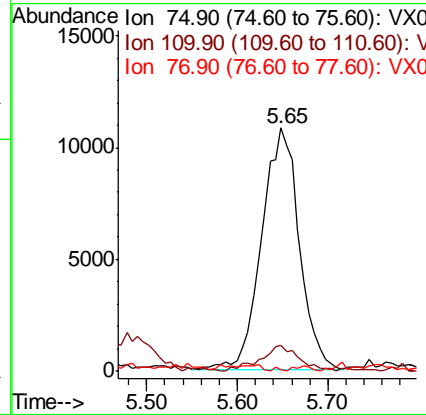
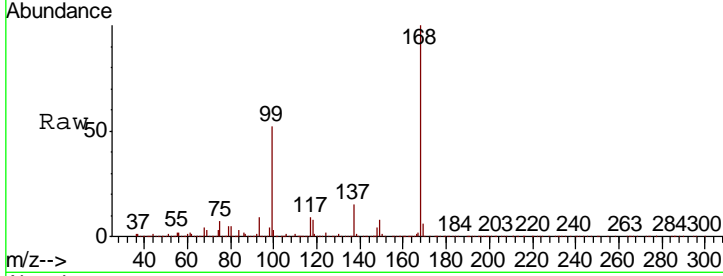




#36
 1,1-Dichloropropene
 Concen: 4.727 ug/l
 RT: 5.65 min Scan# 781
 Delta R.T. -0.15 min
 Lab File: VX014807.D
 Acq: 04 Feb 2020 14:40

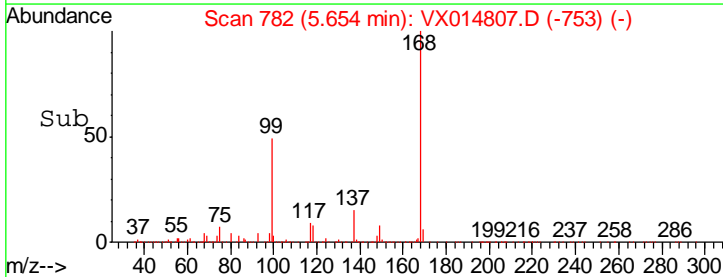
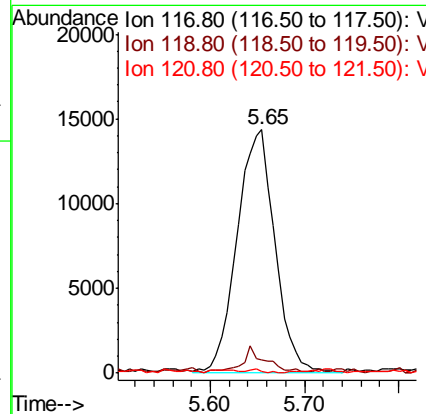
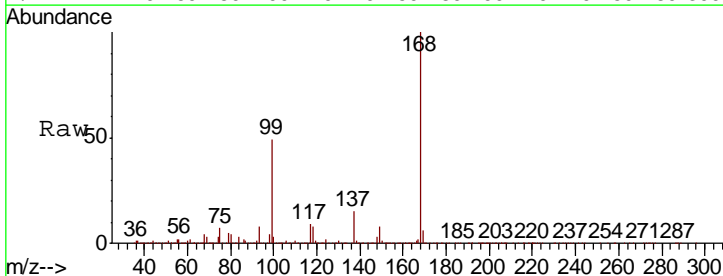
Instrument :
 MSVOA_X
 ClientSampled :
 IBLK

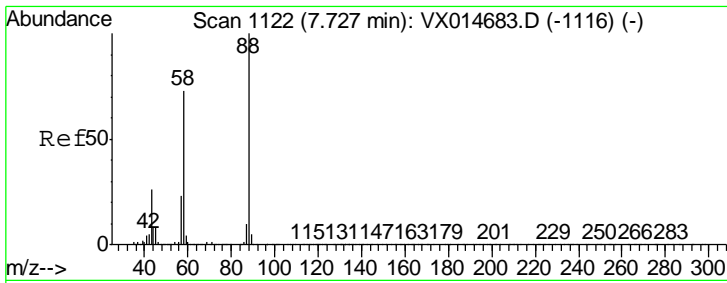
Tgt Ion	Resp	Lower	Upper
75	30879		
110	11.1	17.9	53.7#
77	0.3	24.1	36.1#



#38
 Carbon Tetrachloride
 Concen: 6.479 ug/l
 RT: 5.65 min Scan# 782
 Delta R.T. -0.12 min
 Lab File: VX014807.D
 Acq: 04 Feb 2020 14:40

Tgt Ion	Resp	Lower	Upper
117	40422		
119	3.6	77.9	116.9#
121	0.4	25.4	38.2#

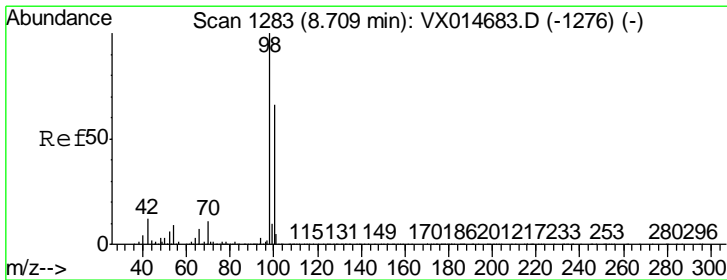
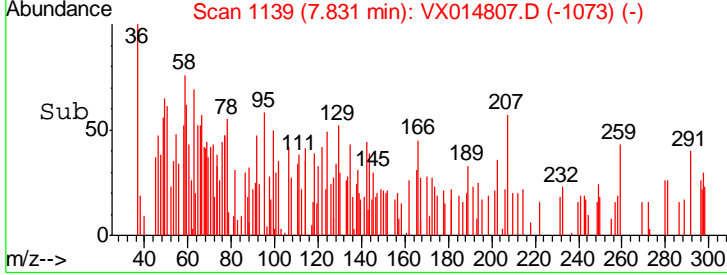
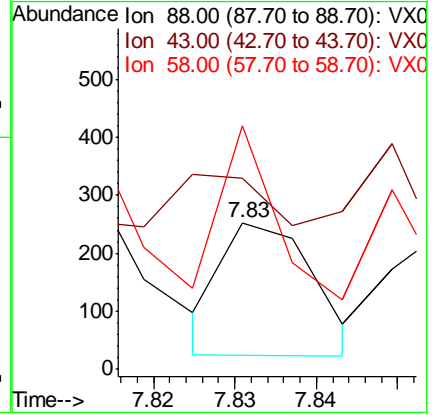
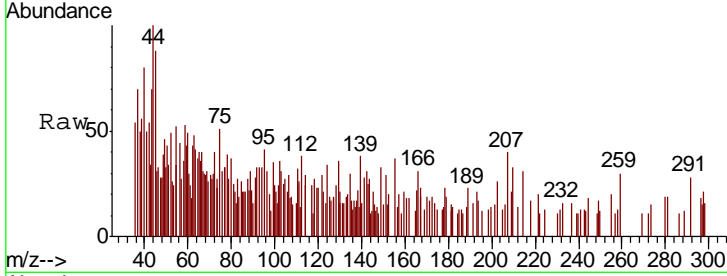




#49
 1,4-Dioxane
 Concen: 1.434 ug/l
 RT: 7.83 min Scan# 1139
 Delta R.T. 0.10 min
 Lab File: VX014807.D
 Acq: 04 Feb 2020 14:40

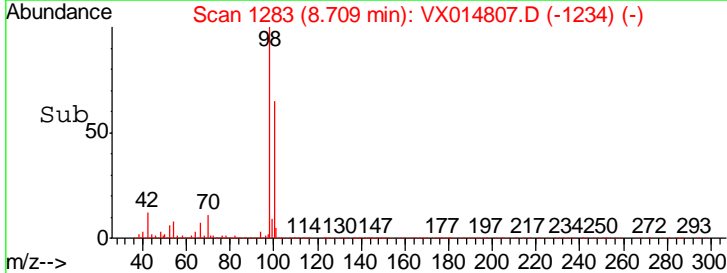
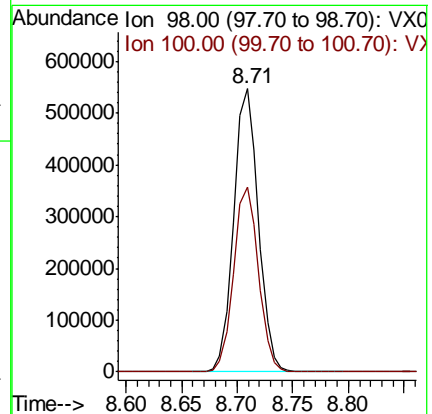
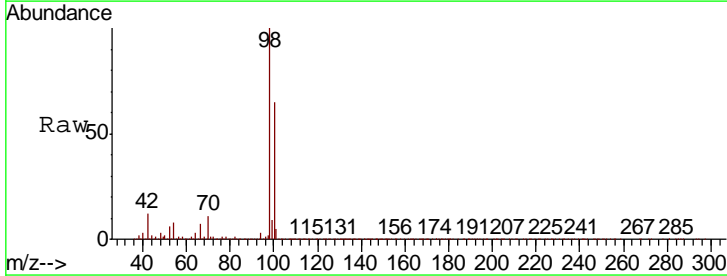
Instrument : MSVOA_X
 ClientSampled : IBLK

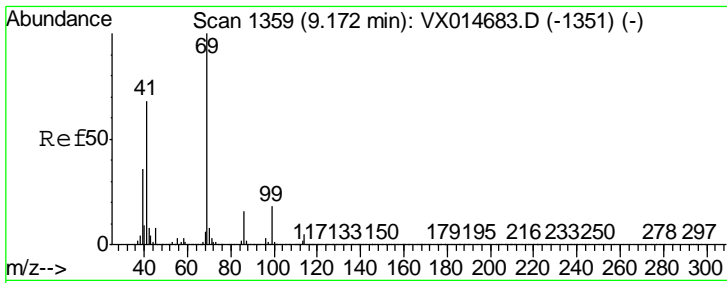
Tgt Ion	Resp	Lower	Upper
88	178		
43	36.0	26.2	39.2
58	74.7	56.6	85.0



#50
 Toluene-d8
 Concen: 49.203 ug/l
 RT: 8.71 min Scan# 1283
 Delta R.T. 0.00 min
 Lab File: VX014807.D
 Acq: 04 Feb 2020 14:40

Tgt Ion	Resp	Lower	Upper
98	839116		
100	65.5	53.0	79.6

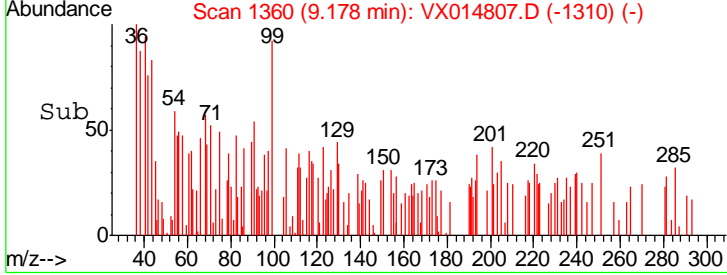
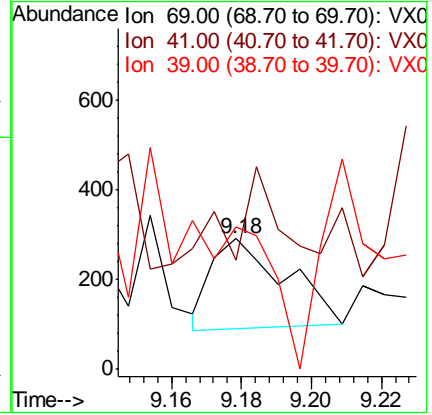
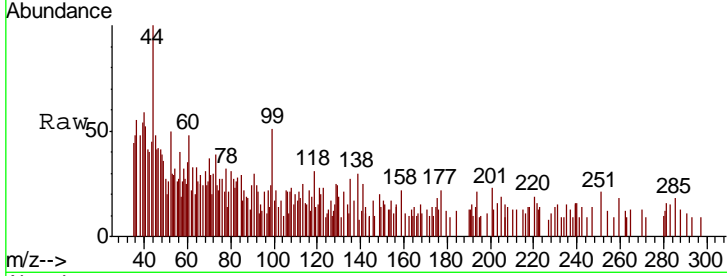




#56
 Ethyl methacrylate
 Concen: 1.817 ug/l
 RT: 9.18 min Scan# 1360
 Delta R.T. 0.01 min
 Lab File: VX014807.D
 Acq: 04 Feb 2020 14:40

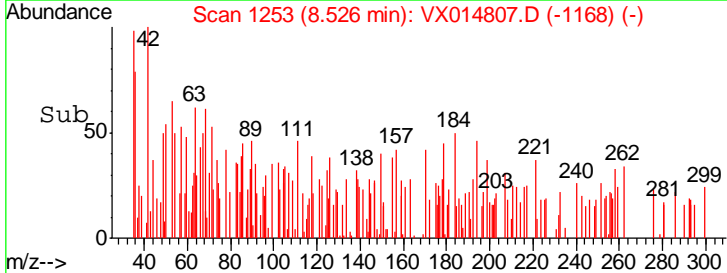
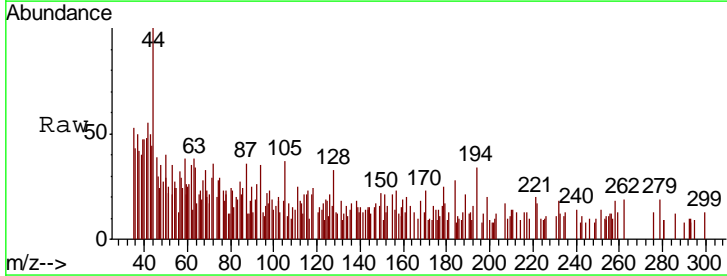
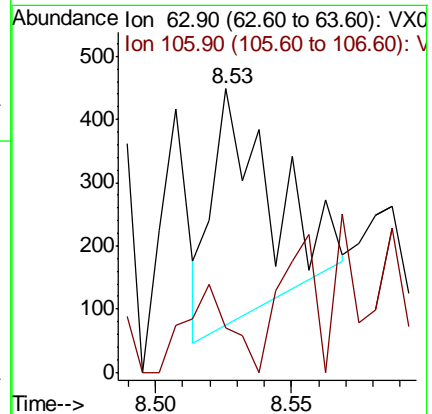
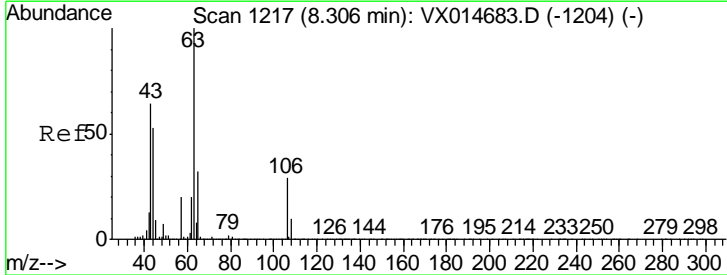
Instrument :
 MSVOA_X
ClientSampled :
 IBLK

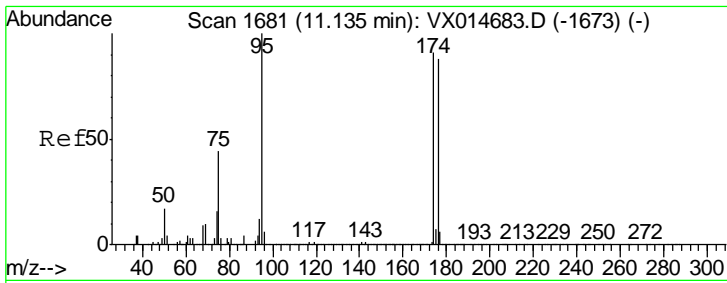
Tgt Ion	Resp	Lower	Upper
69	100		
41	65.1	54.9	82.3
39	0.0	29.3	43.9#



#58
 2-Chloroethyl Vinyl ether
 Concen: 0.216 ug/l
 RT: 8.53 min Scan# 1253
 Delta R.T. 0.22 min
 Lab File: VX014807.D
 Acq: 04 Feb 2020 14:40

Tgt Ion	Resp	Lower	Upper
63	100		
106	28.1	22.7	34.1

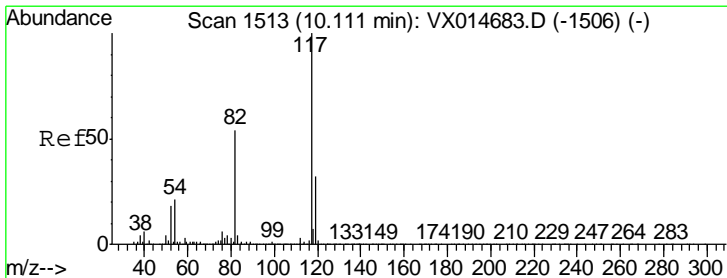
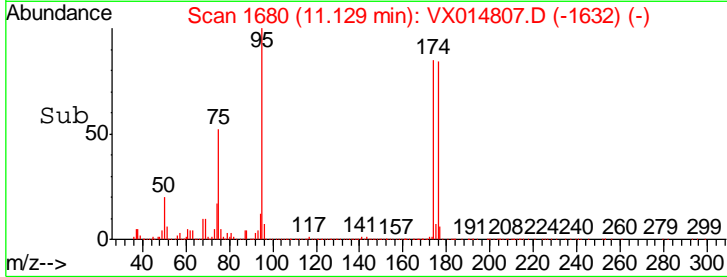
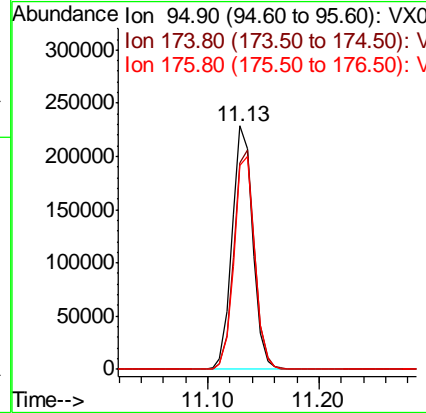
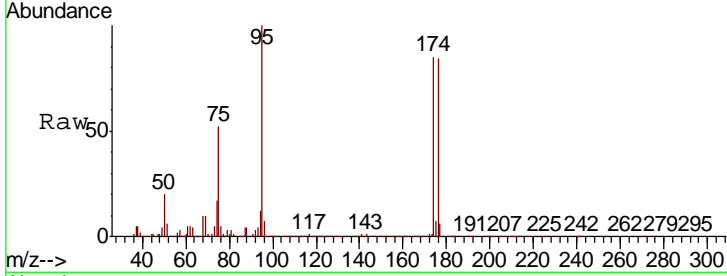




#62
 4-Bromofluorobenzene
 Concen: 48.187 ug/l
 RT: 11.13 min Scan# 1680
 Delta R.T. -0.01 min
 Lab File: VX014807.D
 Acq: 04 Feb 2020 14:40

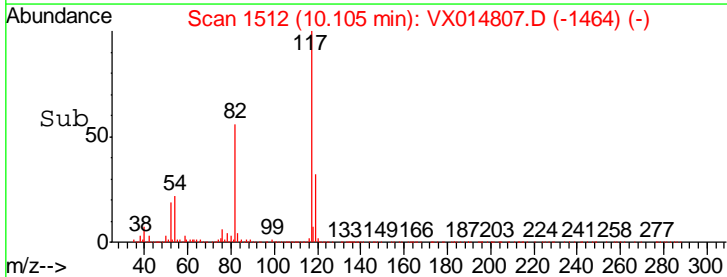
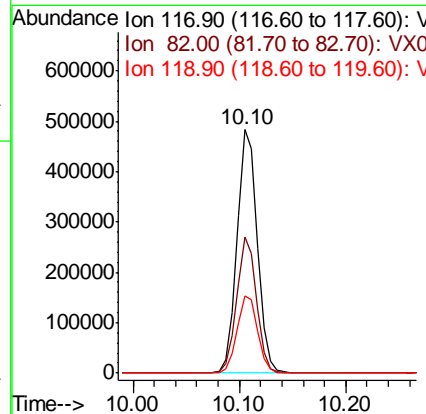
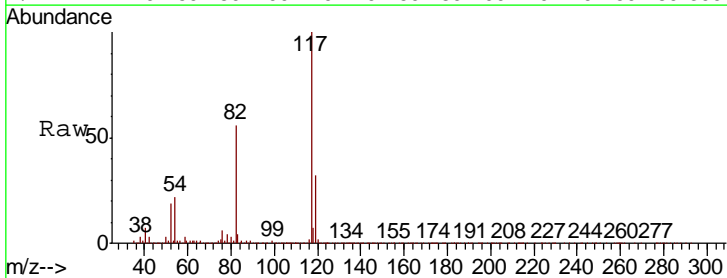
Instrument :
 MSVOA_X
 ClientSampled :
 IBLK

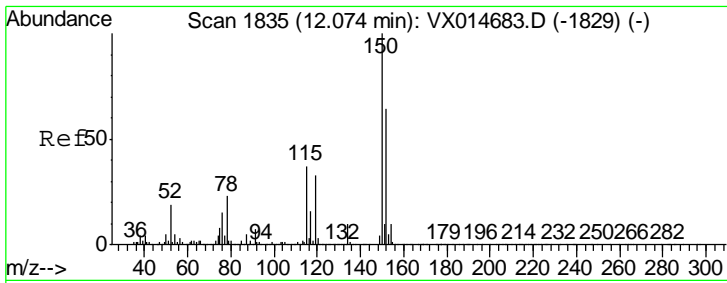
Tgt Ion	Resp	Lower	Upper
95	100		
174	90.1	0.0	176.0
176	87.8	0.0	172.2



#63
 Chlorobenzene-d5
 Concen: 50.000 ug/l
 RT: 10.10 min Scan# 1512
 Delta R.T. -0.01 min
 Lab File: VX014807.D
 Acq: 04 Feb 2020 14:40

Tgt Ion	Resp	Lower	Upper
117	100		
82	56.0	43.2	64.8
119	31.6	25.8	38.6

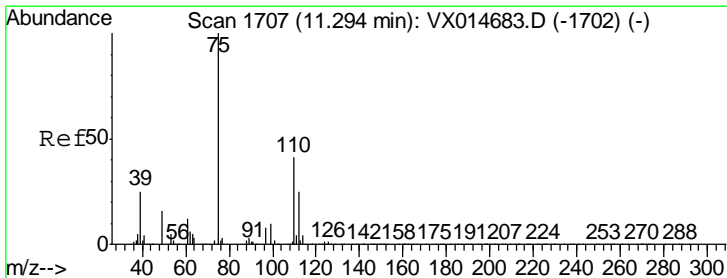
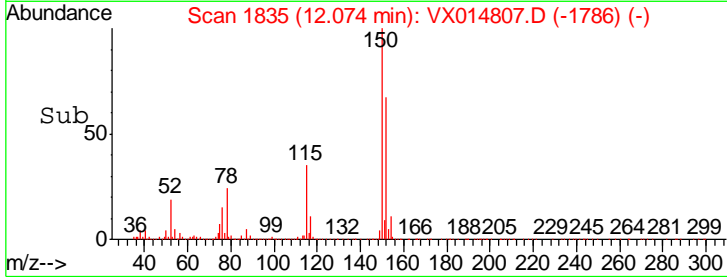
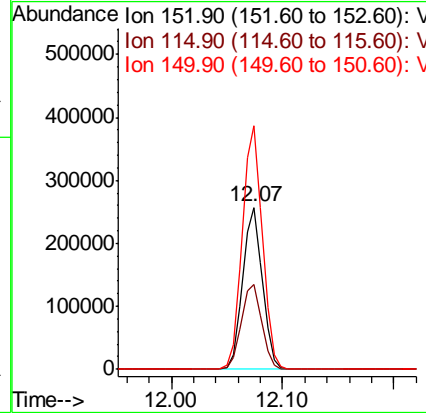
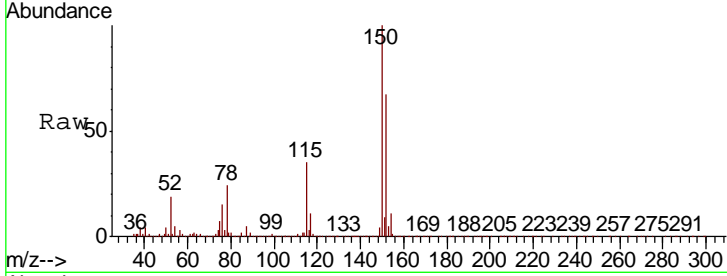




#72
 1,4-Dichlorobenzene-d4
 Concen: 50.000 ug/l
 RT: 12.07 min Scan# 1835
 Delta R.T. 0.00 min
 Lab File: VX014807.D
 Acq: 04 Feb 2020 14:40

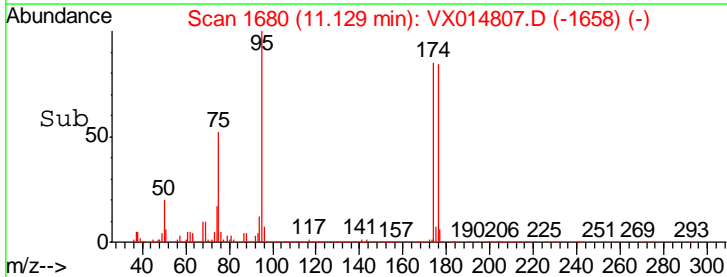
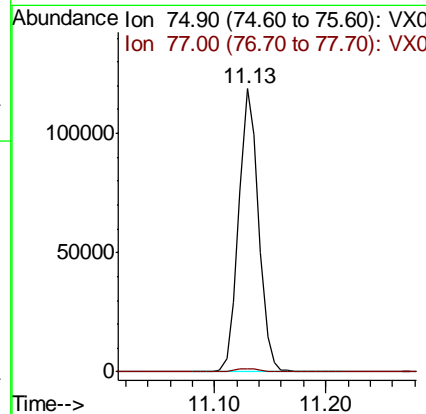
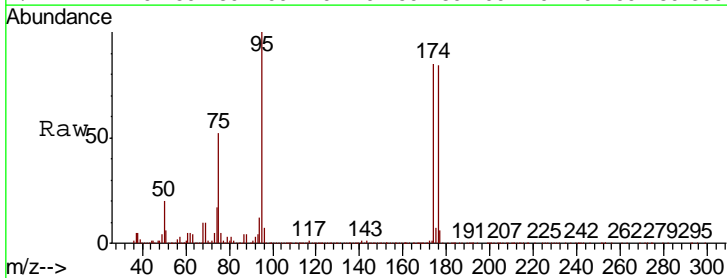
Instrument :
 MSVOA_X
 ClientSampled :
 IBLK

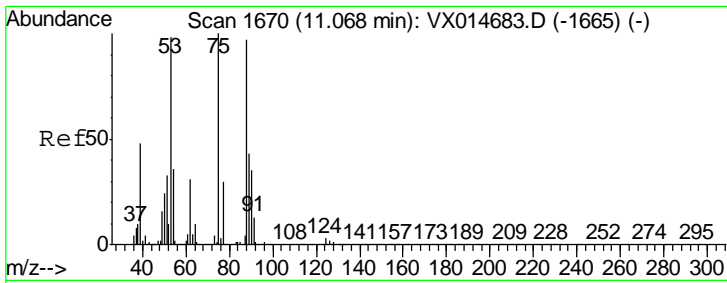
Tgt Ion	Resp	Lower	Upper
152	100		
115	54.6	39.4	118.1
150	152.7	0.0	351.2



#76
 1,2,3-Trichloropropane
 Concen: 20.007 ug/l
 RT: 11.13 min Scan# 1680
 Delta R.T. -0.16 min
 Lab File: VX014807.D
 Acq: 04 Feb 2020 14:40

Tgt Ion	Resp	Lower	Upper
75	100		
77	1.3	18.7	56.1#

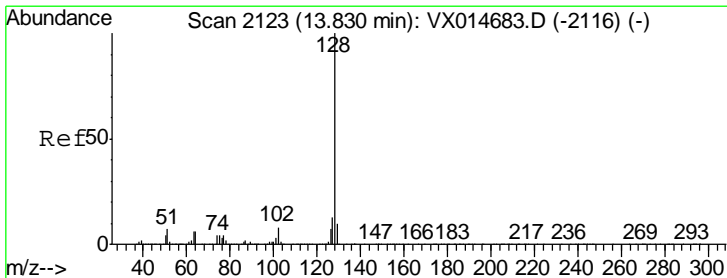
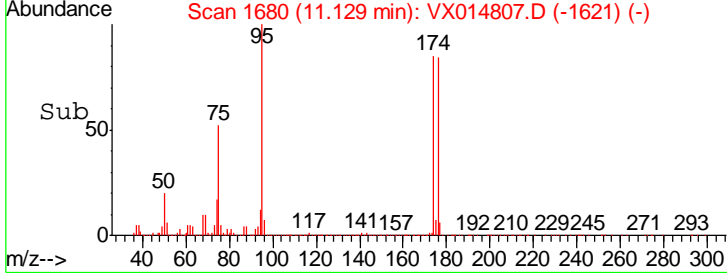
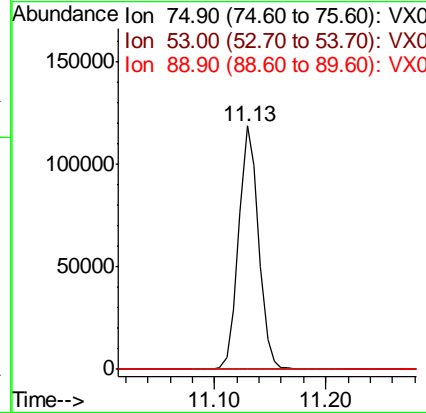
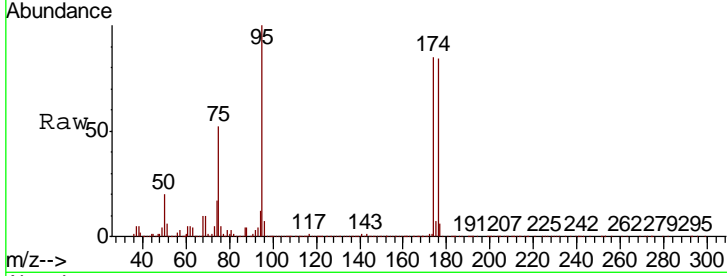




#81
 trans-1,4-Dichloro-2-butene
 Concen: 56.937 ug/l
 RT: 11.13 min Scan# 1680
 Delta R.T. 0.06 min
 Lab File: VX014807.D
 Acq: 04 Feb 2020 14:40

Instrument :
 MSVOA_X
 ClientSampled :
 IBLK

Tgt Ion	Resp	Lower	Upper
75	100		
53	0.0	78.8	118.2#
89	0.2	35.4	53.0#



#95
 Naphthalene
 Concen: 2.882 ug/l
 RT: 13.83 min Scan# 2123
 Delta R.T. 0.00 min
 Lab File: VX014807.D
 Acq: 04 Feb 2020 14:40

Tgt Ion	Resp	Lower	Upper
128	100		
127	13.4	10.3	15.5
129	10.4	8.6	12.8

