

Data Path : Z:\VOASRV\HPCHEM1\MSVOA X\DATA\WX020420\
 Data File : VX014808.D
 Acq On : 04 Feb 2020 15:45
 Operator : JC/SP
 Sample : IBLK
 Misc : 5.0mL/MSVOA X/WATER
 ALS Vial : 10 Sample Multiplier: 1

Instrument :
 MSVOA_X
 ClientSampleId :
 IBLK

Quant Time: Feb 05 03:03:33 2020
 Quant Method : Z:\VOASRV\HPCHEM1\MSVOA_X\METHOD\82X012220W.M
 Quant Title : SW846 8260
 QLast Update : Wed Jan 22 12:35:15 2020
 Response via : Initial Calibration

Internal Standards	R.T.	QIon	Response	Conc	Units	Dev(Min)
1) Pentafluorobenzene	5.65	168	441595	50.00	ug/l	0.00
34) 1,4-Difluorobenzene	6.84	114	692830	50.00	ug/l	0.00
63) Chlorobenzene-d5	10.11	117	631943	50.00	ug/l	0.00
72) 1,4-Dichlorobenzene-d4	12.07	152	301850	50.00	ug/l	0.00

System Monitoring Compounds

33) 1,2-Dichloroethane-d4	6.04	65	256511	49.74	ug/l	0.00
Spiked Amount	50.000		Recovery	=	99.48%	
35) Dibromofluoromethane	5.48	113	211643	48.41	ug/l	0.00
Spiked Amount	50.000		Recovery	=	96.82%	
50) Toluene-d8	8.71	98	822923	48.96	ug/l	0.00
Spiked Amount	50.000		Recovery	=	97.92%	
62) 4-Bromofluorobenzene	11.13	95	288424	48.18	ug/l	0.00
Spiked Amount	50.000		Recovery	=	96.36%	

Target Compounds

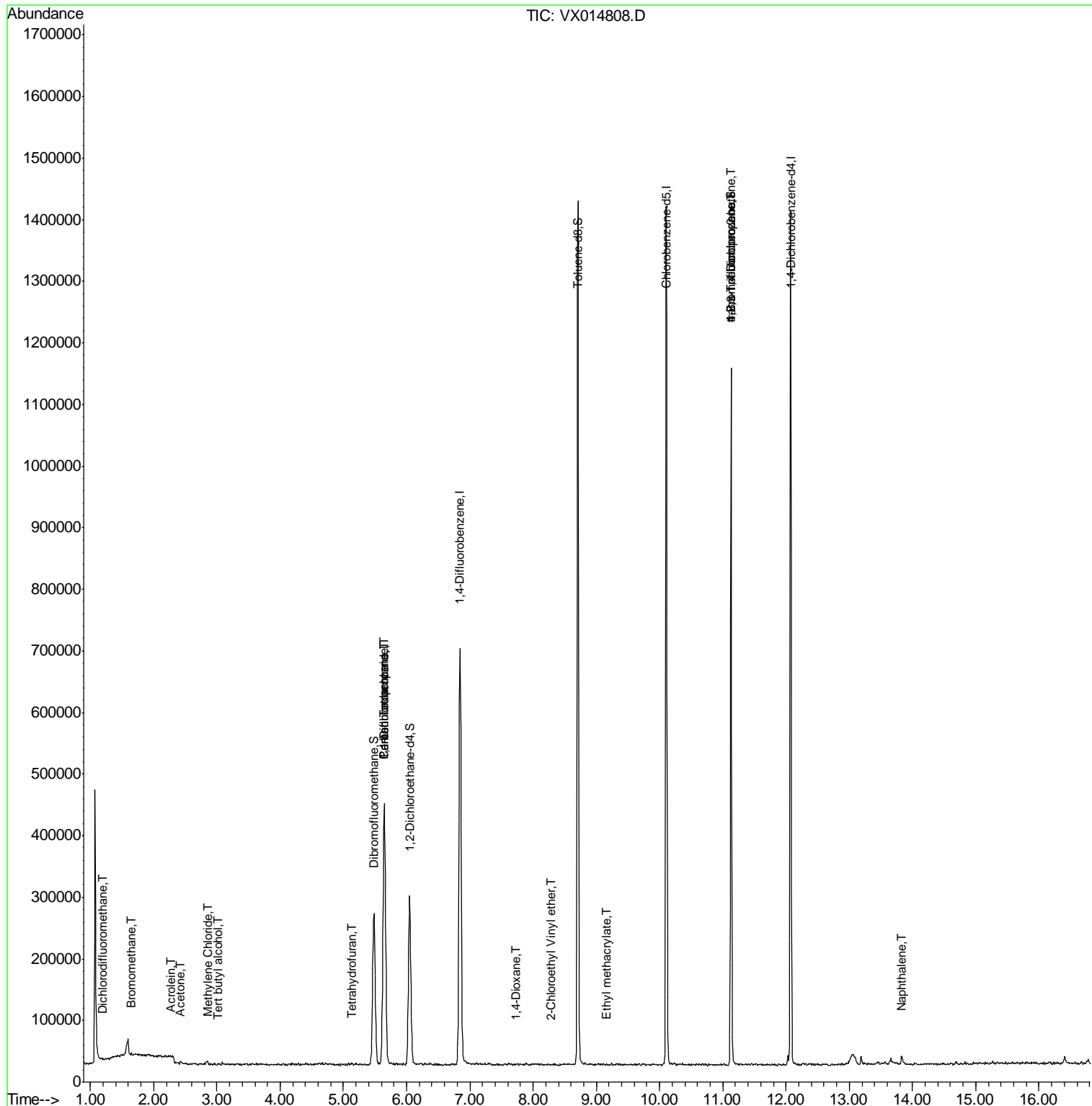
					Qvalue	
2) Dichlorodifluoromethane	1.20	85	276	0.577	ug/l #	14
5) Bromomethane	1.65	94	1106	0.252	ug/l #	76
6) Chloroethane	1.80	64	850	Below Cal	#	43
11) Tert butyl alcohol	3.01	59	1326	1.145	ug/l	96
13) Acrolein	2.27	56	374	0.410	ug/l #	14
16) Acetone	2.43	43	4584	1.771	ug/l	95
20) Methylene Chloride	2.85	84	3399	0.650	ug/l #	68
29) Tetrahydrofuran	5.13	42	1760	0.732	ug/l #	70
36) 1,1-Dichloropropene	5.64	75	30690	4.767	ug/l #	52
38) Carbon Tetrachloride	5.65	117	38253	6.222	ug/l #	17
41) Methacrylonitrile	5.03	41	188	Below Cal	#	1
49) 1,4-Dioxane	7.73	88	219	1.791	ug/l #	23
56) Ethyl methacrylate	9.16	69	197	1.807	ug/l #	30
58) 2-Chloroethyl Vinyl ether	8.28	63	735	0.292	ug/l	92
76) 1,2,3-Trichloropropane	11.13	75	144393	20.561	ug/l #	40
81) trans-1,4-Dichloro-2-buten	11.13	75	144393	58.512	ug/l #	11
95) Naphthalene	13.83	128	9157	1.356	ug/l #	90

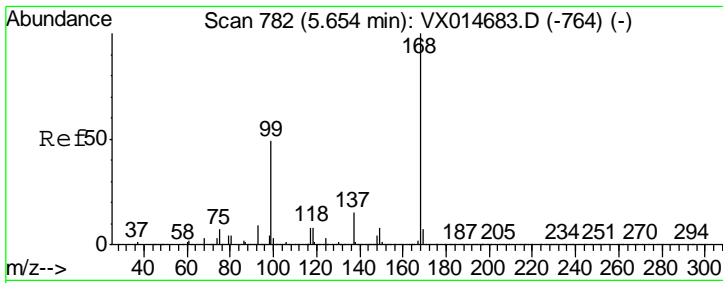
(#) = qualifier out of range (m) = manual integration (+) = signals summed

Data Path : Z:\VOASRV\HPCHEM1\MSVOA X\DATA\VX020420\
 Data File : VX014808.D
 Acq On : 04 Feb 2020 15:45
 Operator : JC/SP
 Sample : IBLK
 Misc : 5.0mL/MSVOA X/WATER
 ALS Vial : 10 Sample Multiplier: 1

Instrument :
 MSVOA_X
 Client Sampled :
 IBLK

Quant Time: Feb 05 03:03:33 2020
 Quant Method : Z:\VOASRV\HPCHEM1\MSVOA_X\METHOD\82X012220W.M
 Quant Title : SW846 8260
 QLast Update : Wed Jan 22 12:35:15 2020
 Response via : Initial Calibration

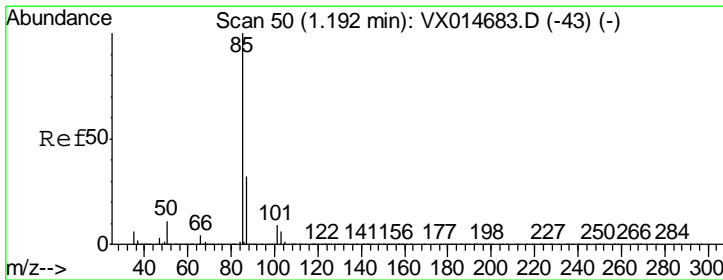
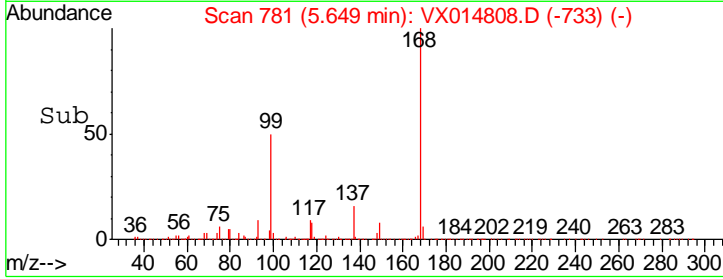
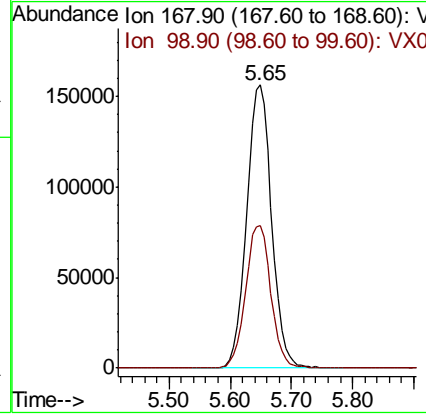
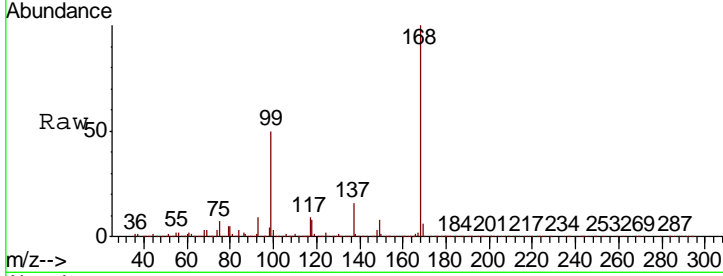




#1
 Pentafluorobenzene
 Concen: 50.000 ug/l
 RT: 5.65 min Scan# 781
 Delta R.T. -0.01 min
 Lab File: VX014808.D
 Acq: 04 Feb 2020 15:45

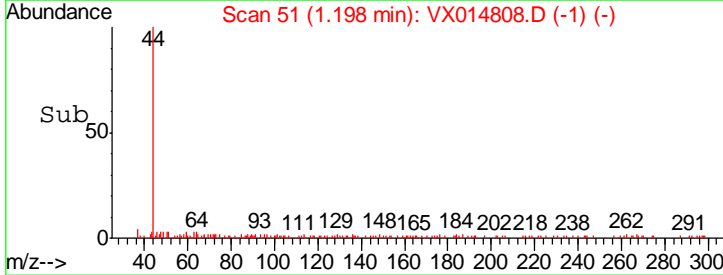
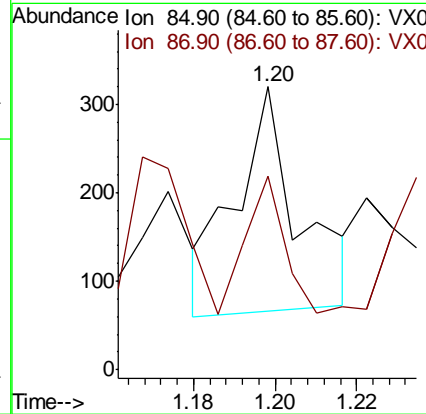
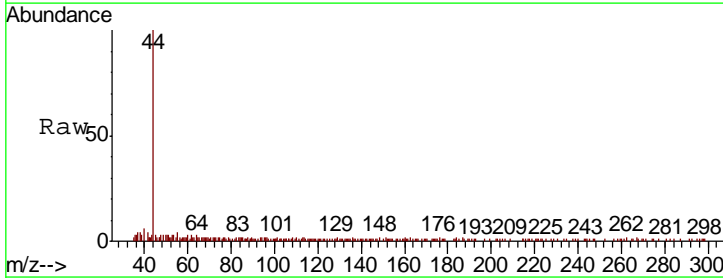
Instrument :
 MSVOA_X
 ClientSampled :
 IBLK

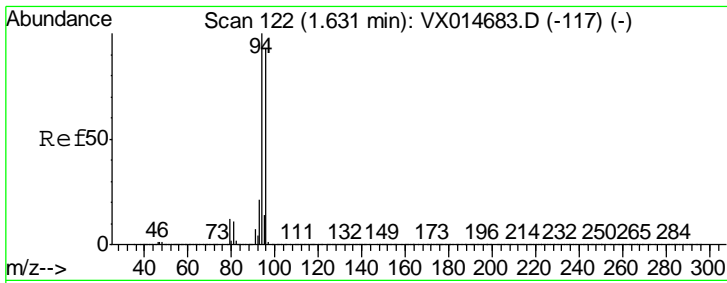
Tgt Ion	Resp	Lower	Upper
168	441595		
99	50.3	39.8	59.6



#2
 Dichlorodifluoromethane
 Concen: 0.577 ug/l
 RT: 1.20 min Scan# 51
 Delta R.T. 0.01 min
 Lab File: VX014808.D
 Acq: 04 Feb 2020 15:45

Tgt Ion	Resp	Lower	Upper
85	276		
87	80.4	16.2	48.5#

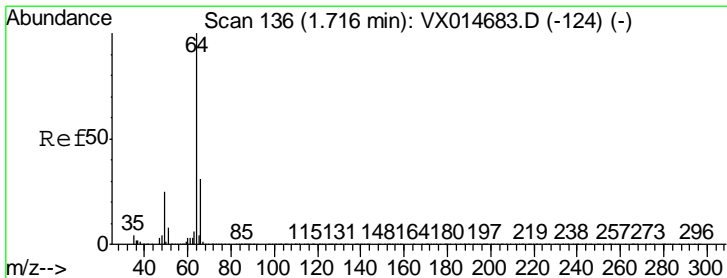
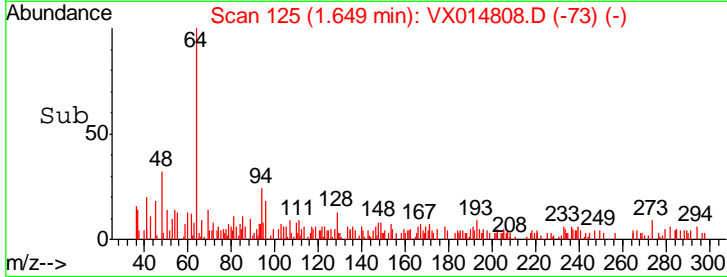
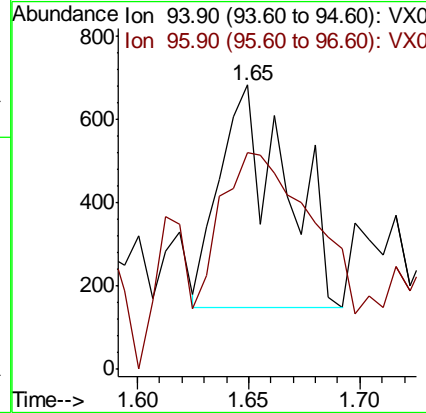
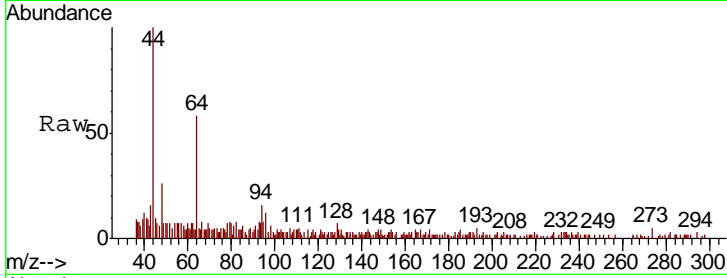




#5
 Bromomethane
 Concen: 0.252 ug/l
 RT: 1.65 min Scan# 125
 Delta R.T. 0.02 min
 Lab File: VX014808.D
 Acq: 04 Feb 2020 15:45

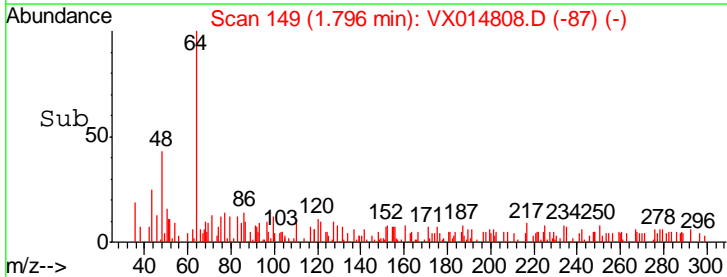
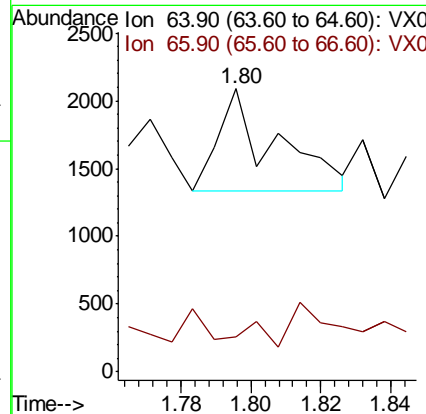
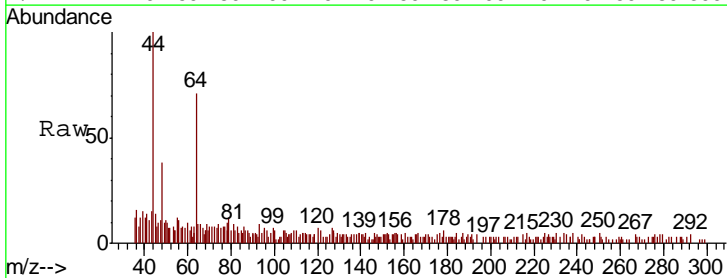
Instrument :
 MSVOA_X
 ClientSampled :
 IBLK

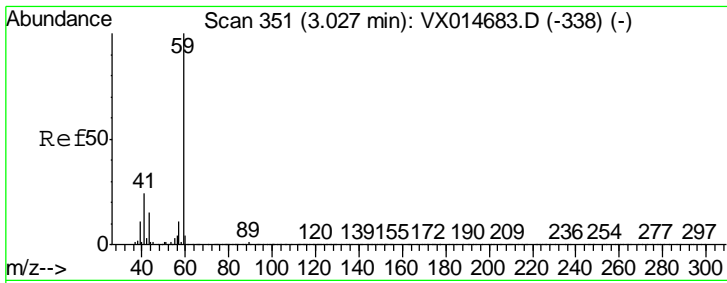
Tgt Ion: 94 Resp: 1106
 Ion Ratio Lower Upper
 94 100
 96 70.1 74.7 112.1#



#6
 Chloroethane
 Concen: Below Cal
 RT: 1.80 min Scan# 149
 Delta R.T. 0.08 min
 Lab File: VX014808.D
 Acq: 04 Feb 2020 15:45

Tgt Ion: 64 Resp: 850
 Ion Ratio Lower Upper
 64 100
 66 0.0 25.2 37.8#

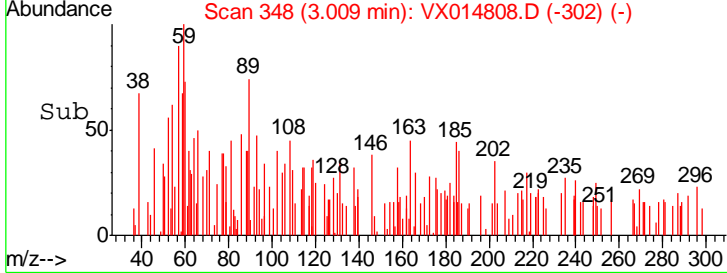
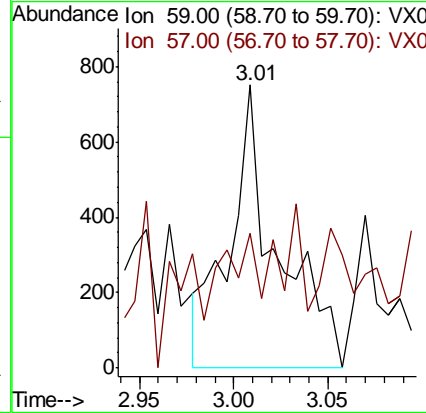
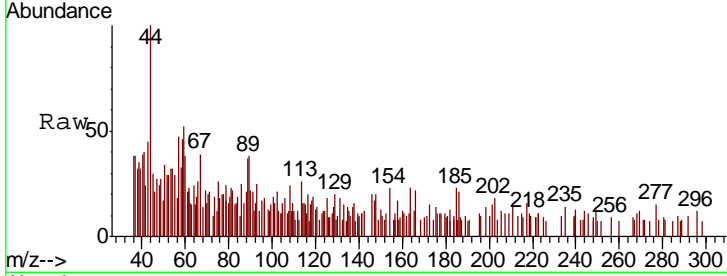




#11
 Tert butyl alcohol
 Concen: 1.145 ug/l
 RT: 3.01 min Scan# 348
 Delta R.T. -0.02 min
 Lab File: VX014808.D
 Acq: 04 Feb 2020 15:45

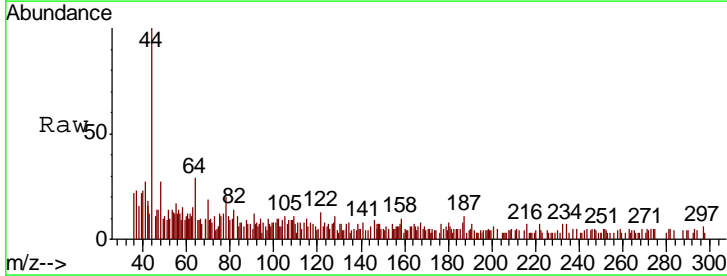
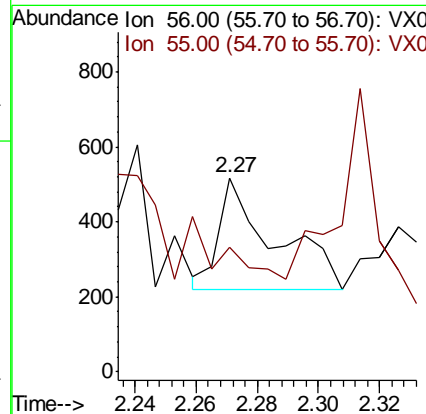
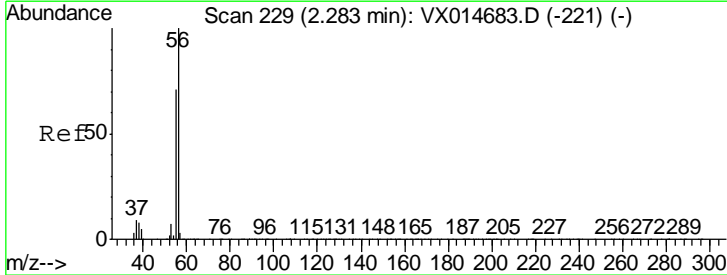
Instrument :
 MSVOA_X
 ClientSampled :
 IBLK

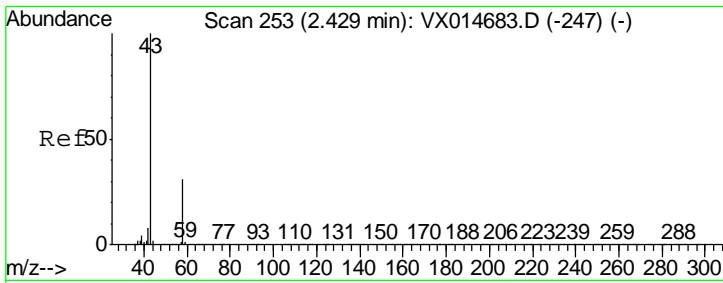
Tgt Ion: 59 Resp: 1326
 Ion Ratio Lower Upper
 59 100
 57 12.1 8.3 12.5



#13
 Acrolein
 Concen: 0.410 ug/l
 RT: 2.27 min Scan# 227
 Delta R.T. -0.01 min
 Lab File: VX014808.D
 Acq: 04 Feb 2020 15:45

Tgt Ion: 56 Resp: 374
 Ion Ratio Lower Upper
 56 100
 55 0.0 56.6 84.8#

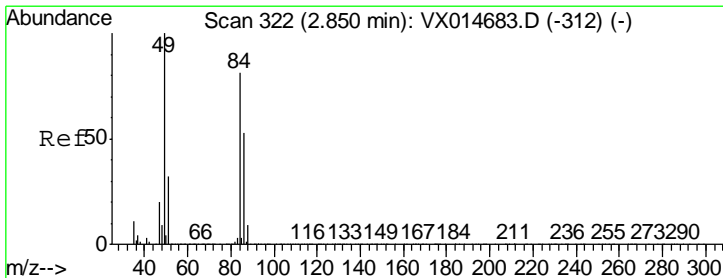
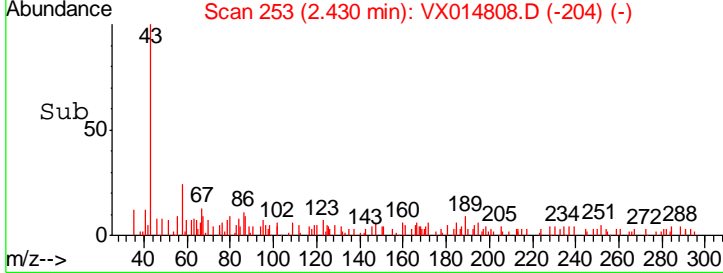
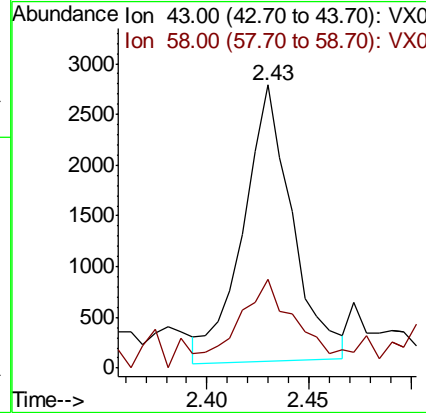
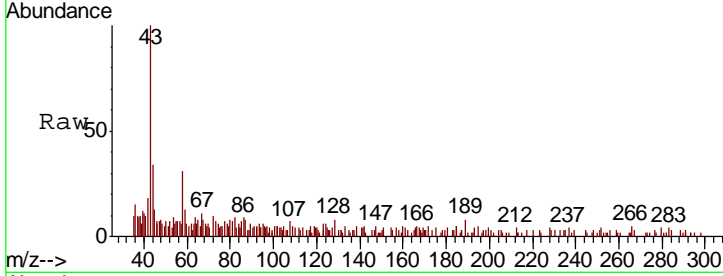




#16
 Acetone
 Concen: 1.771 ug/l
 RT: 2.43 min Scan# 253
 Delta R.T. 0.00 min
 Lab File: VX014808.D
 Acq: 04 Feb 2020 15:45

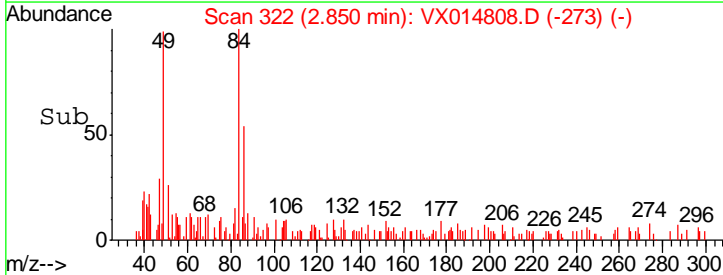
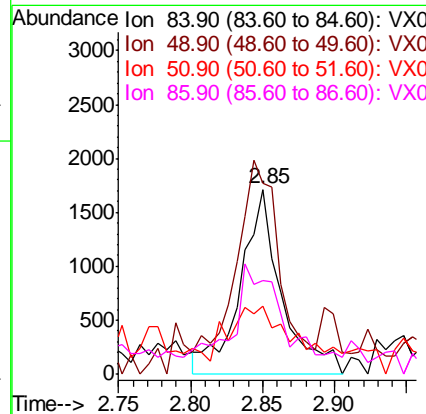
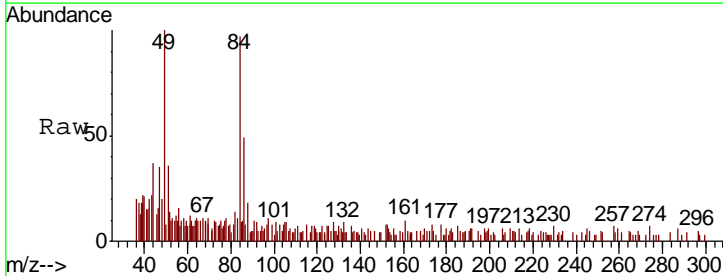
Instrument : MSVOA_X
 ClientSampled : IBLK

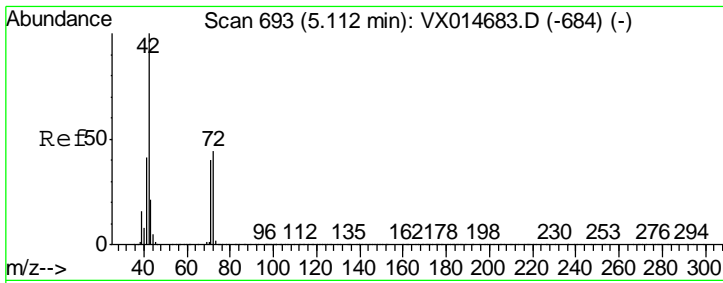
Tgt Ion	Ratio	Lower	Upper
43	100		
58	27.8	24.5	36.7



#20
 Methylene Chloride
 Concen: 0.650 ug/l
 RT: 2.85 min Scan# 322
 Delta R.T. 0.00 min
 Lab File: VX014808.D
 Acq: 04 Feb 2020 15:45

Tgt Ion	Ratio	Lower	Upper
84	100		
49	84.2	98.2	147.4#
51	24.0	31.3	46.9#
86	38.2	51.8	77.6#

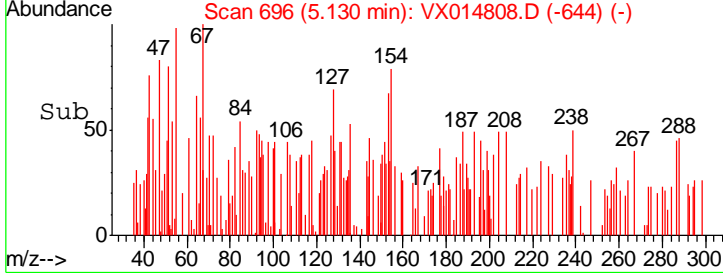
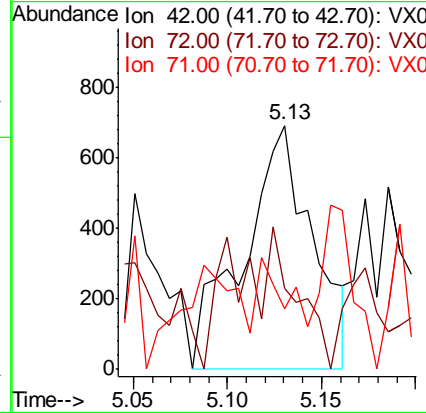
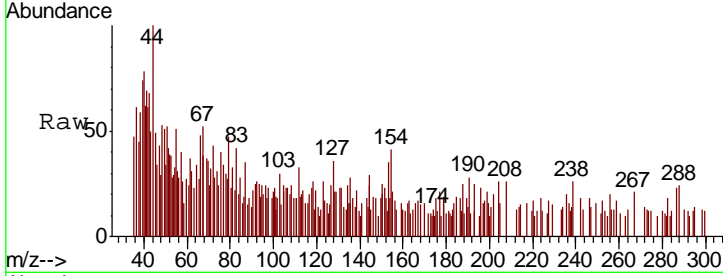




#29
 Tetrahydrofuran
 Concen: 0.732 ug/l
 RT: 5.13 min Scan# 696
 Delta R.T. 0.02 min
 Lab File: VX014808.D
 Acq: 04 Feb 2020 15:45

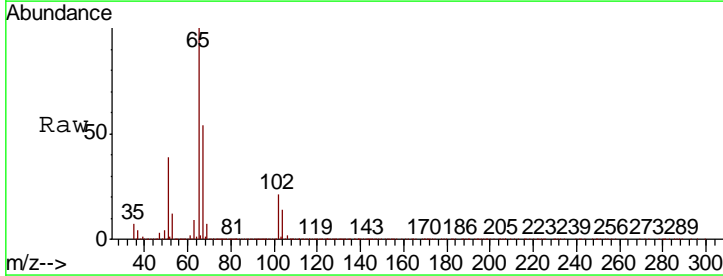
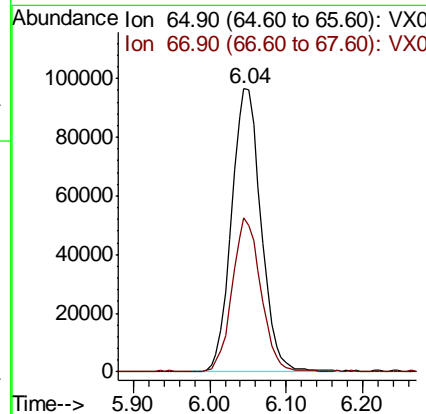
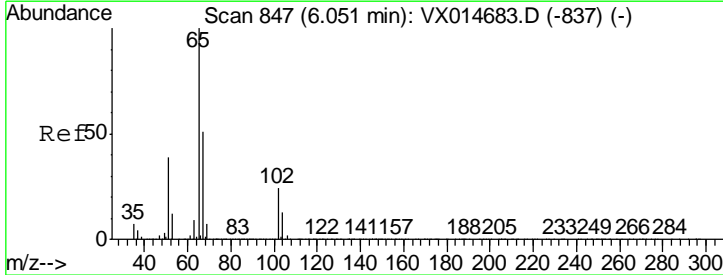
Instrument :
 MSVOA_X
ClientSampled :
 BLK

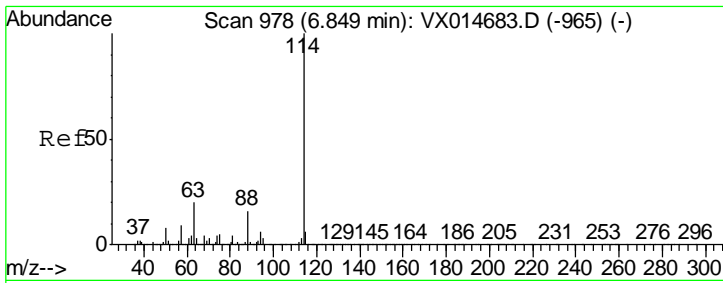
Tgt Ion	Resp	Lower	Upper
42	1760		
72	24.3	35.3	52.9#
71	22.4	33.1	49.7#



#33
 1,2-Dichloroethane-d4
 Concen: 49.742 ug/l
 RT: 6.04 min Scan# 846
 Delta R.T. -0.01 min
 Lab File: VX014808.D
 Acq: 04 Feb 2020 15:45

Tgt Ion	Resp	Lower	Upper
65	256511		
67	53.4	0.0	107.4

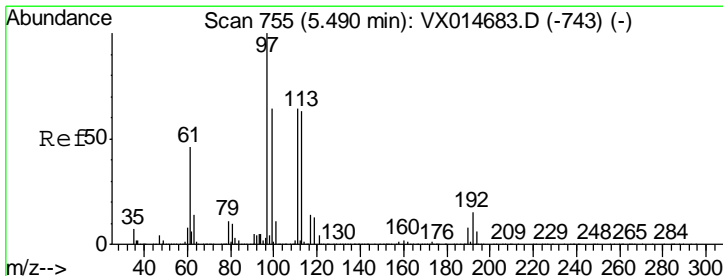
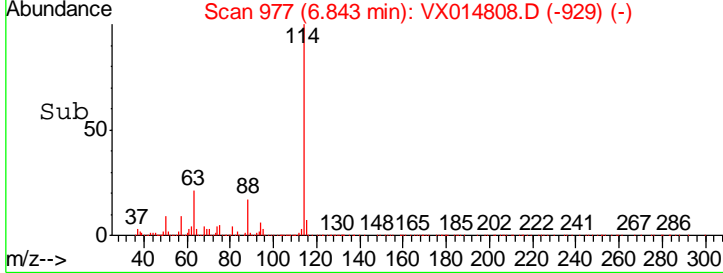
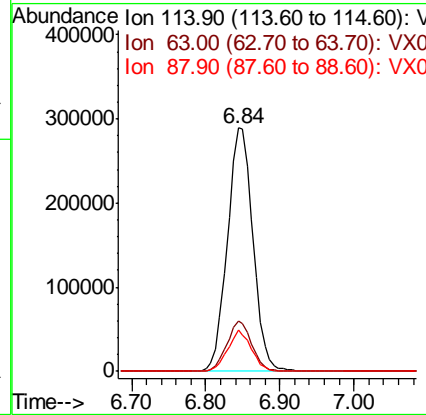
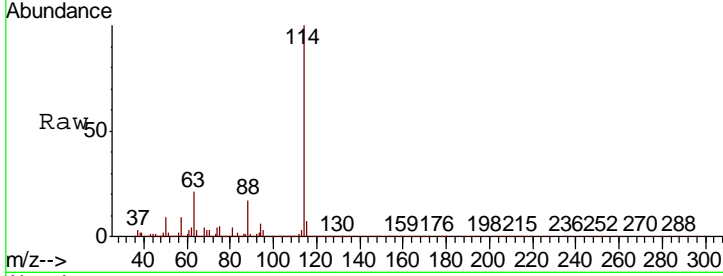




#34
 1,4-Difluorobenzene
 Concen: 50.000 ug/l
 RT: 6.84 min Scan# 977
 Delta R.T. -0.01 min
 Lab File: VX014808.D
 Acq: 04 Feb 2020 15:45

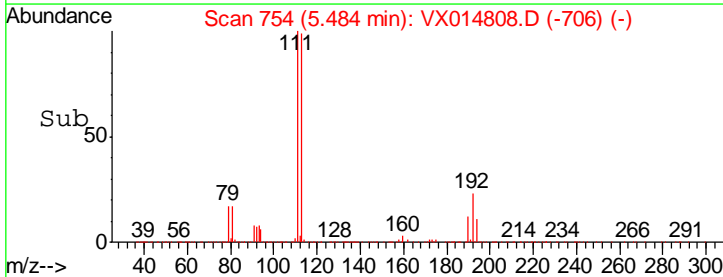
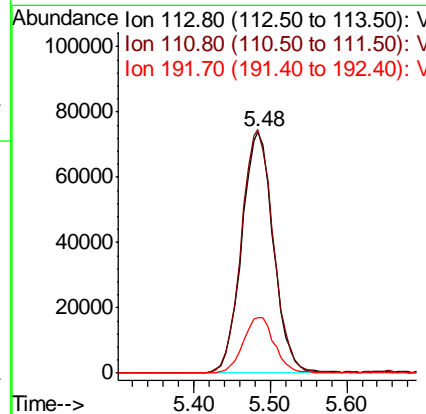
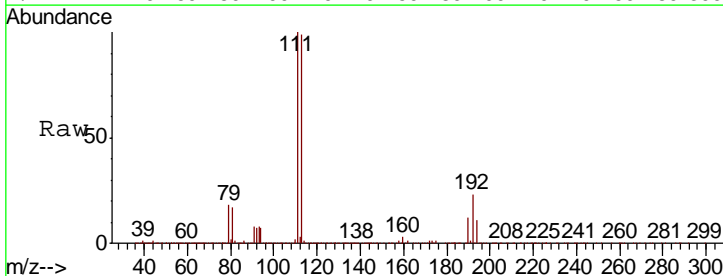
Instrument :
 MSVOA_X
 ClientSampled :
 IBLK

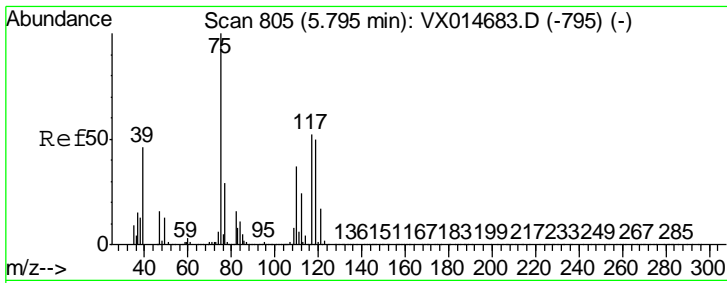
Tgt Ion	Resp	Lower	Upper
114	692830		
63	20.8	0.0	40.6
88	16.7	0.0	31.2



#35
 Dibromofluoromethane
 Concen: 48.412 ug/l
 RT: 5.48 min Scan# 754
 Delta R.T. -0.01 min
 Lab File: VX014808.D
 Acq: 04 Feb 2020 15:45

Tgt Ion	Resp	Lower	Upper
113	211643		
111	101.9	80.7	121.1
192	23.1	18.5	27.7

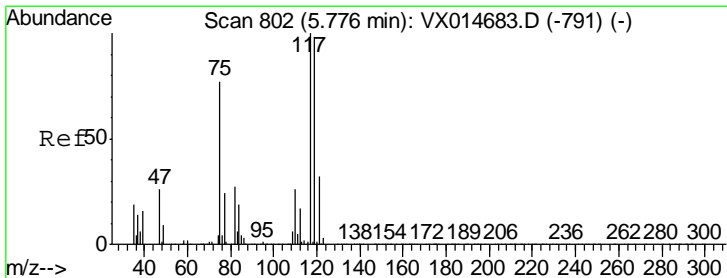
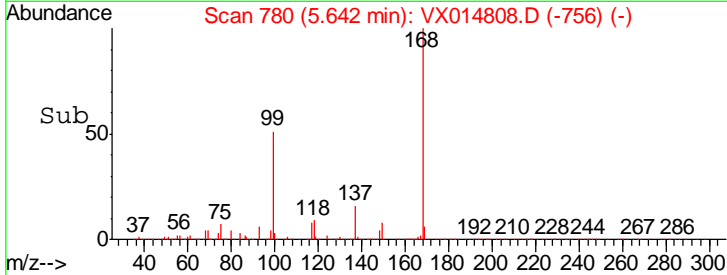
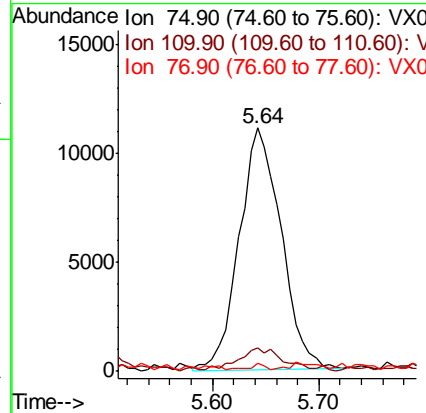
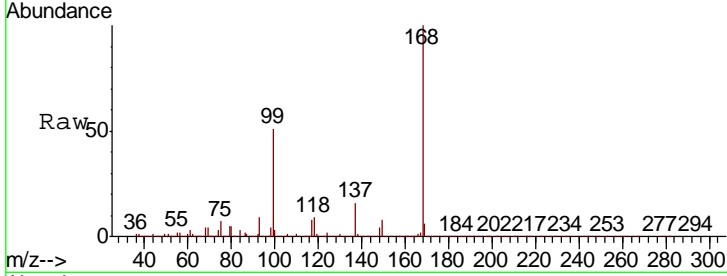




#36
 1,1-Dichloropropene
 Concen: 4.767 ug/l
 RT: 5.64 min Scan# 780
 Delta R.T. -0.15 min
 Lab File: VX014808.D
 Acq: 04 Feb 2020 15:45

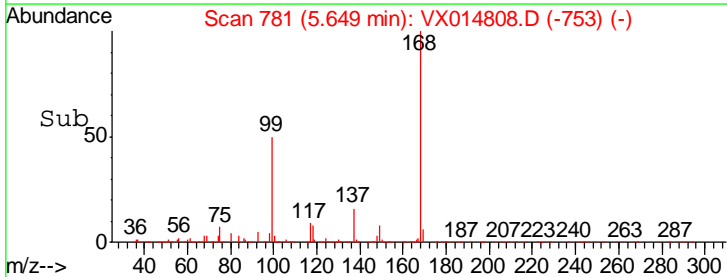
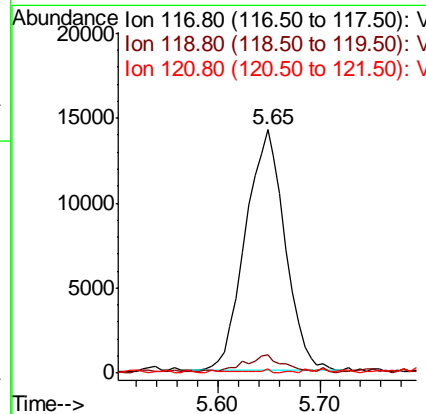
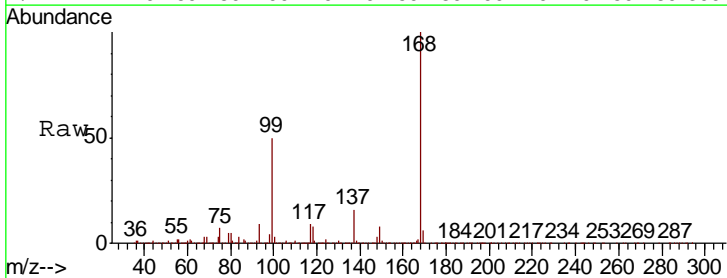
Instrument :
 MSVOA_X
 ClientSampled :
 IBLK

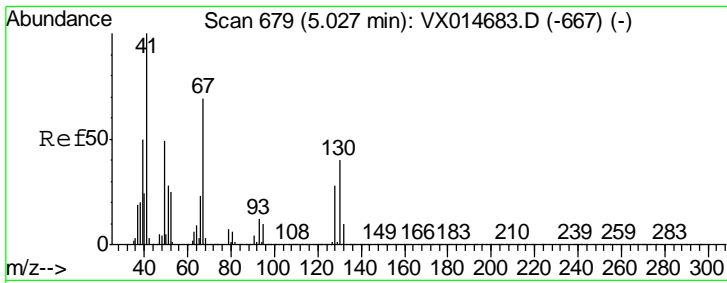
Tgt Ion	Resp	Lower	Upper
75	30690		
110	10.8	17.9	53.7#
77	0.6	24.1	36.1#



#38
 Carbon Tetrachloride
 Concen: 6.222 ug/l
 RT: 5.65 min Scan# 781
 Delta R.T. -0.13 min
 Lab File: VX014808.D
 Acq: 04 Feb 2020 15:45

Tgt Ion	Resp	Lower	Upper
117	38253		
119	7.2	77.9	116.9#
121	0.5	25.4	38.2#

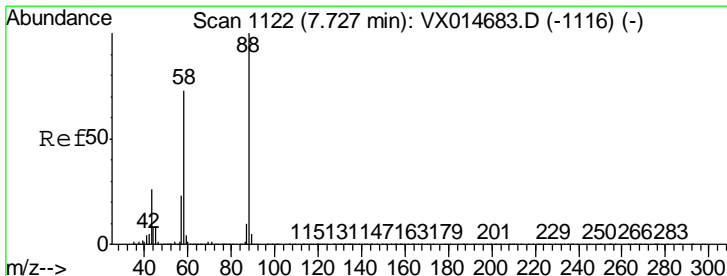
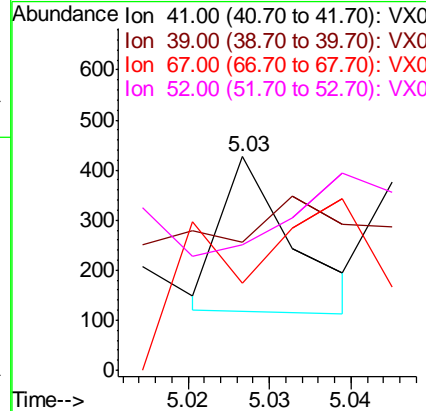
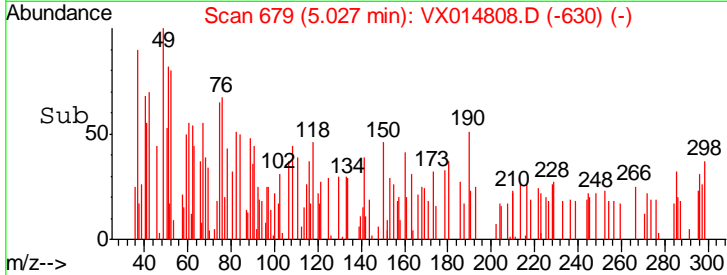
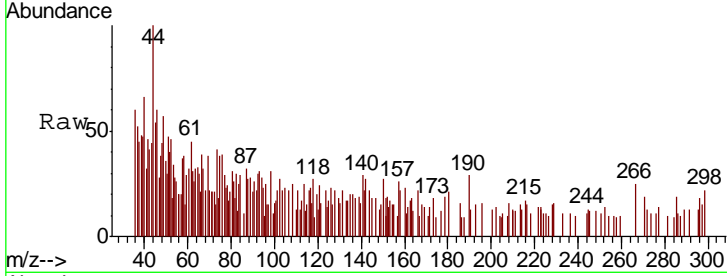




#41
 Methacrylonitrile
 Concen: Below Cal
 RT: 5.03 min Scan# 679
 Delta R.T. 0.00 min
 Lab File: VX014808.D
 Acq: 04 Feb 2020 15:45

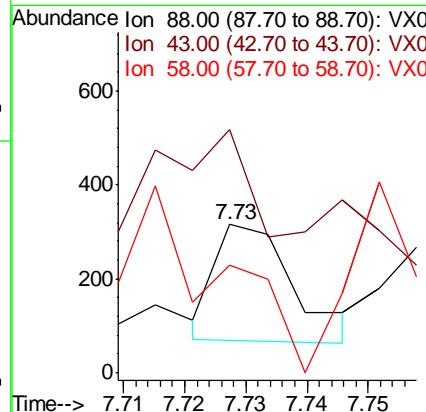
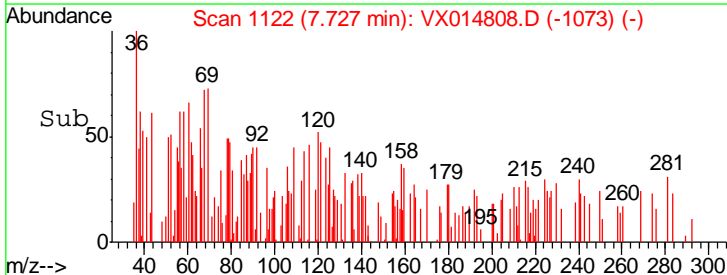
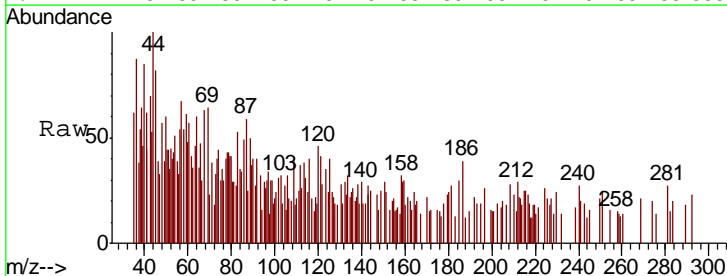
Instrument : MSVOA_X
 ClientSampled : IBLK

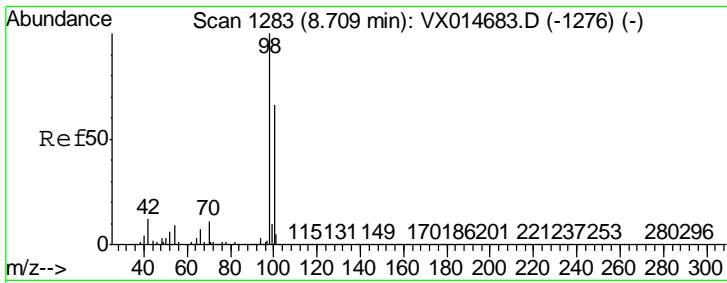
Tgt Ion	Resp	Lower	Upper
41	188		
39	0.0	42.2	63.2#
67	245.7	55.4	83.0#
52	0.0	22.1	33.1#



#49
 1,4-Dioxane
 Concen: 1.791 ug/l
 RT: 7.73 min Scan# 1122
 Delta R.T. 0.00 min
 Lab File: VX014808.D
 Acq: 04 Feb 2020 15:45

Tgt Ion	Resp	Lower	Upper
88	219		
43	0.0	26.2	39.2#
58	0.0	56.6	85.0#

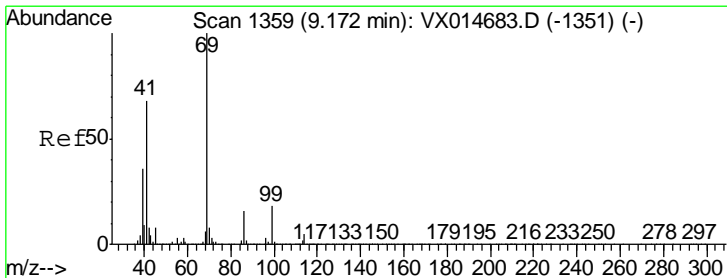
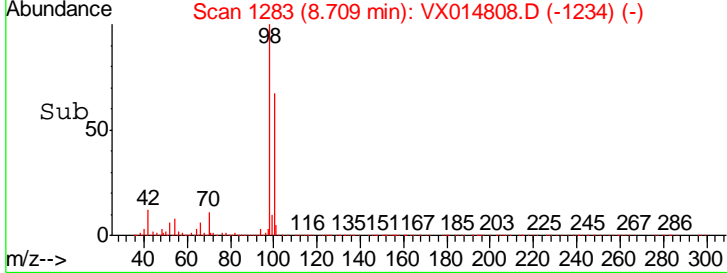
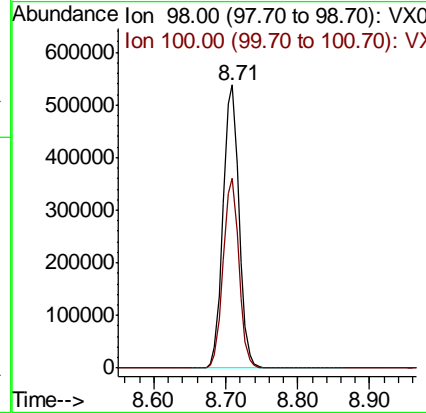
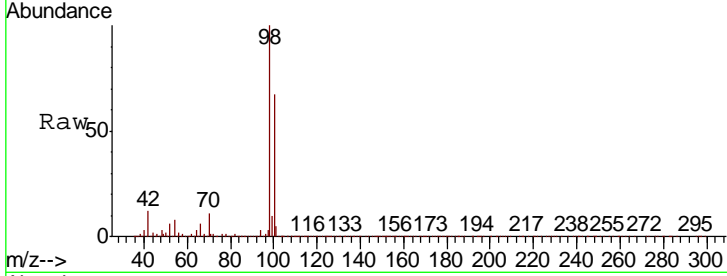




#50
 Toluene-d8
 Concen: 48.964 ug/l
 RT: 8.71 min Scan# 1283
 Delta R.T. 0.00 min
 Lab File: VX014808.D
 Acq: 04 Feb 2020 15:45

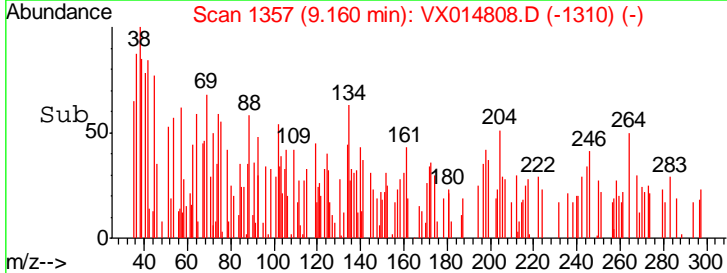
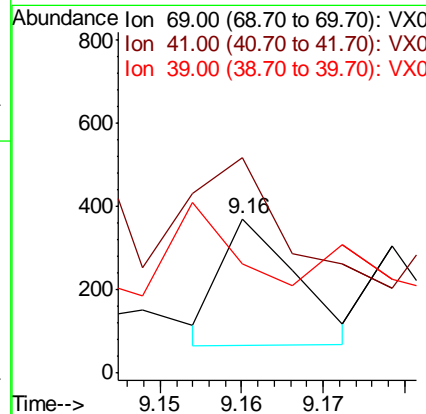
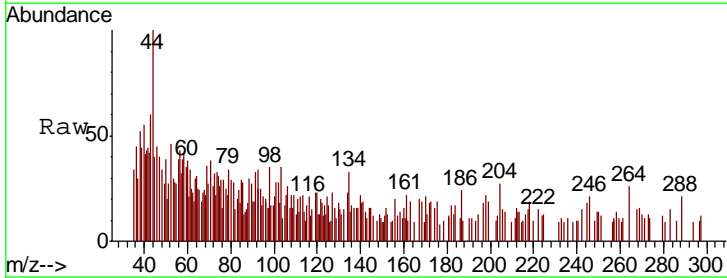
Instrument :
 MSVOA_X
 ClientSampled :
 BLK

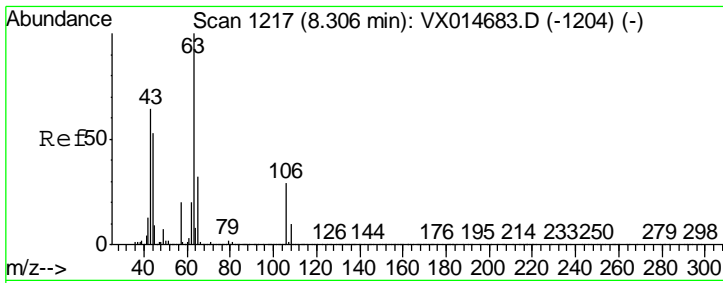
Tgt Ion	Resp	Lower	Upper
98	100		
100	66.3	53.0	79.6



#56
 Ethyl methacrylate
 Concen: 1.807 ug/l
 RT: 9.16 min Scan# 1357
 Delta R.T. -0.01 min
 Lab File: VX014808.D
 Acq: 04 Feb 2020 15:45

Tgt Ion	Resp	Lower	Upper
69	100		
41	0.0	54.9	82.3#
39	61.4	29.3	43.9#

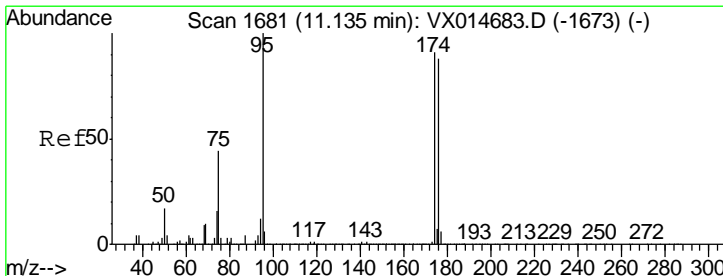
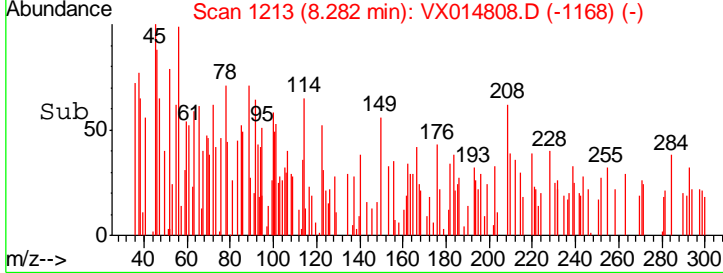
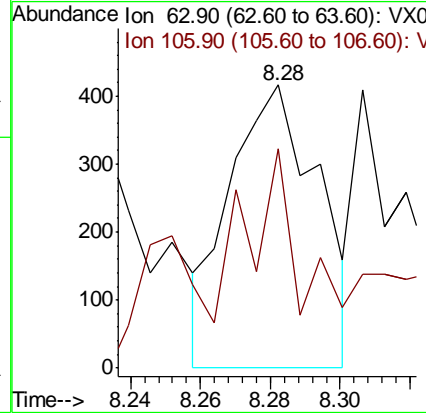
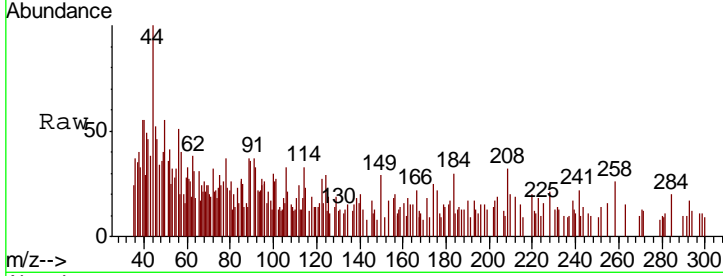




#58
 2-Chloroethyl Vinyl ether
 Concen: 0.292 ug/l
 RT: 8.28 min Scan# 1213
 Delta R.T. -0.02 min
 Lab File: VX014808.D
 Acq: 04 Feb 2020 15:45

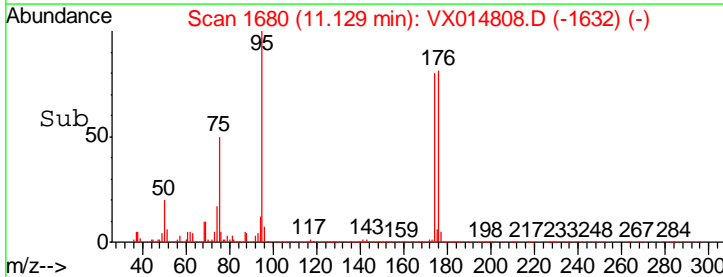
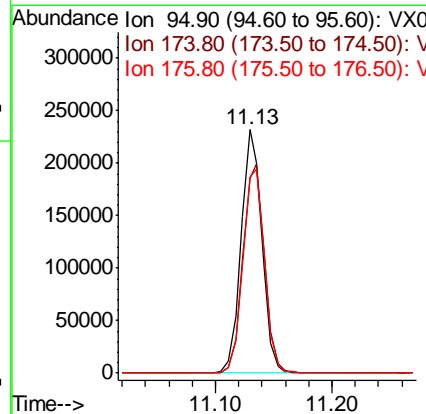
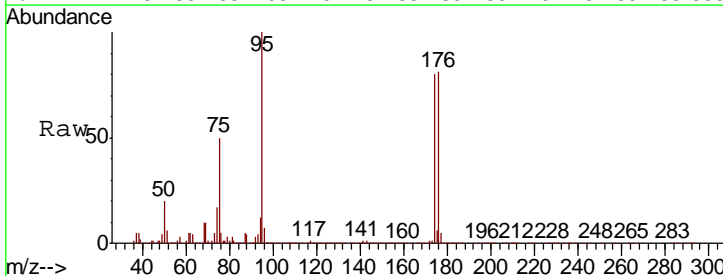
Instrument :
 MSVOA_X
 ClientSampled :
 BLK

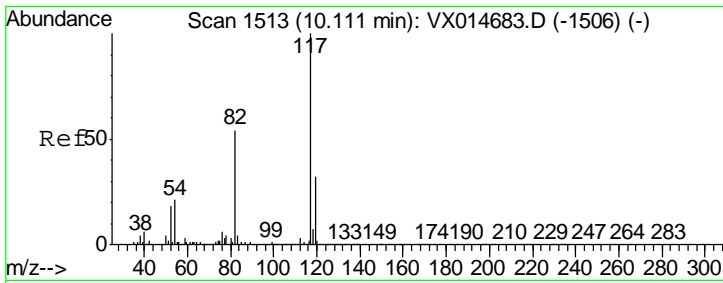
Tgt Ion	Resp	Lower	Upper
63	735		
106	32.5	22.7	34.1



#62
 4-Bromofluorobenzene
 Concen: 48.176 ug/l
 RT: 11.13 min Scan# 1680
 Delta R.T. -0.01 min
 Lab File: VX014808.D
 Acq: 04 Feb 2020 15:45

Tgt Ion	Resp	Lower	Upper
95	288424		
174	89.1	0.0	176.0
176	87.3	0.0	172.2

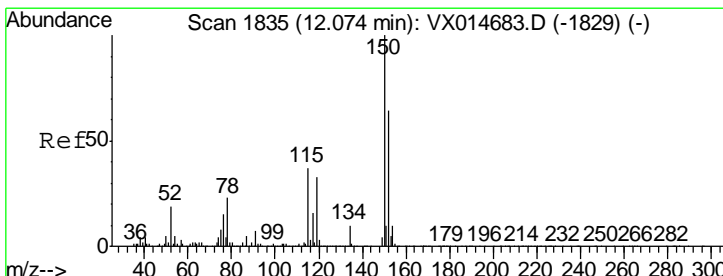
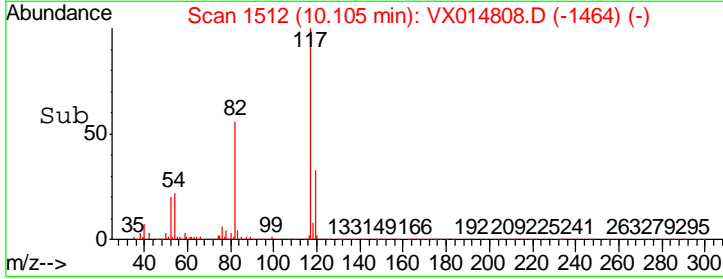
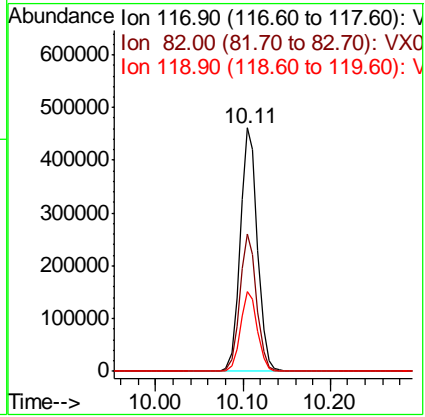
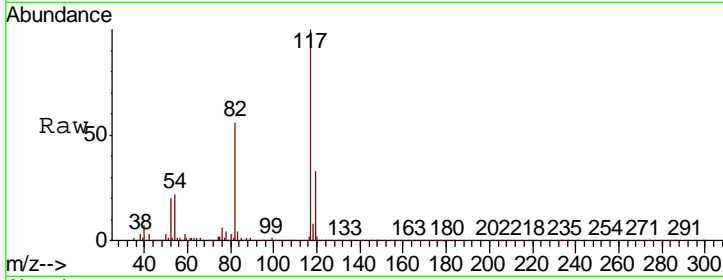




#63
 Chlorobenzene-d5
 Concen: 50.000 ug/l
 RT: 10.11 min Scan# 1512
 Delta R.T. -0.01 min
 Lab File: VX014808.D
 Acq: 04 Feb 2020 15:45

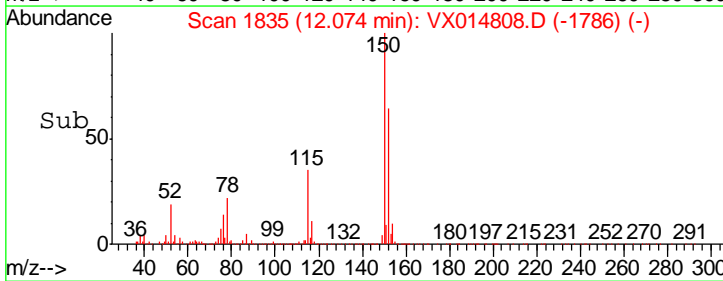
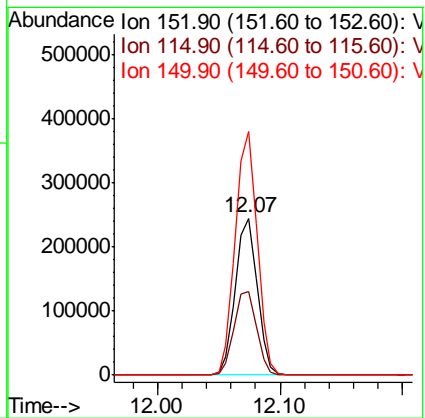
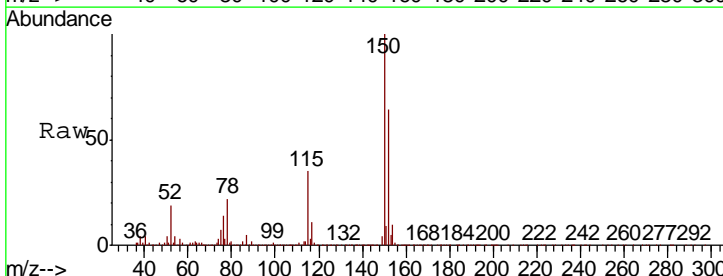
Instrument : MSVOA_X
 ClientSampled : IBLK

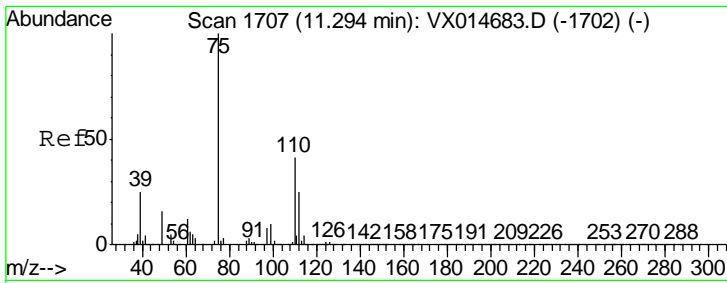
Tgt Ion	Resp	Lower	Upper
117	631943		
82	56.2	43.2	64.8
119	32.6	25.8	38.6



#72
 1,4-Dichlorobenzene-d4
 Concen: 50.000 ug/l
 RT: 12.07 min Scan# 1835
 Delta R.T. 0.00 min
 Lab File: VX014808.D
 Acq: 04 Feb 2020 15:45

Tgt Ion	Resp	Lower	Upper
152	301850		
115	55.1	39.4	118.1
150	156.3	0.0	351.2

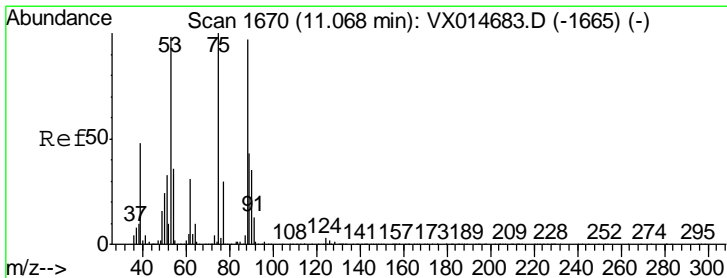
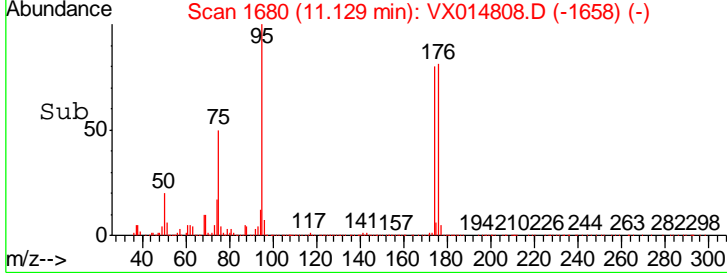
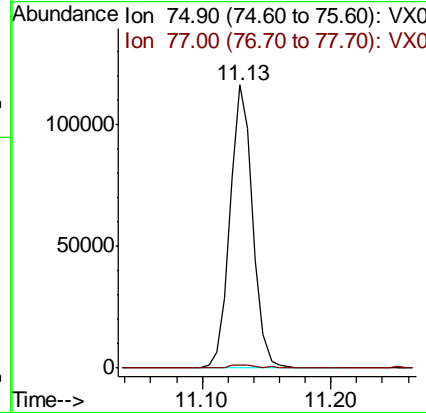
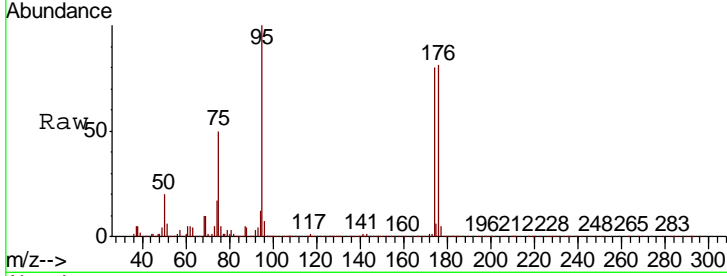




#76
 1,2,3-Trichloropropane
 Concen: 20.561 ug/l
 RT: 11.13 min Scan# 1680
 Delta R.T. -0.16 min
 Lab File: VX014808.D
 Acq: 04 Feb 2020 15:45

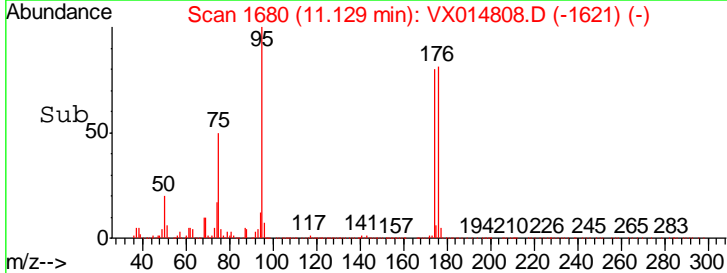
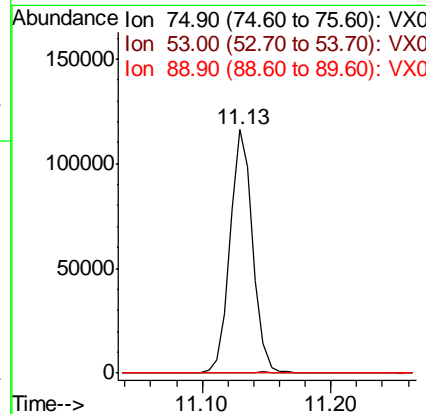
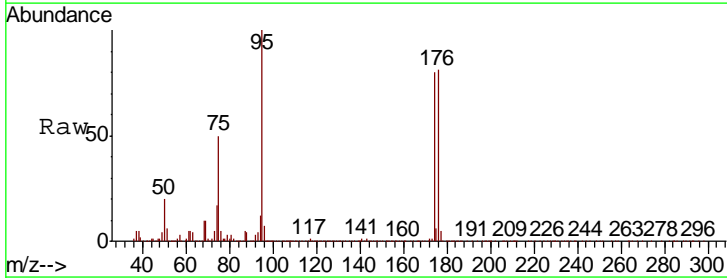
Instrument :
 MSVOA_X
 Client Sampled :
 IBLK

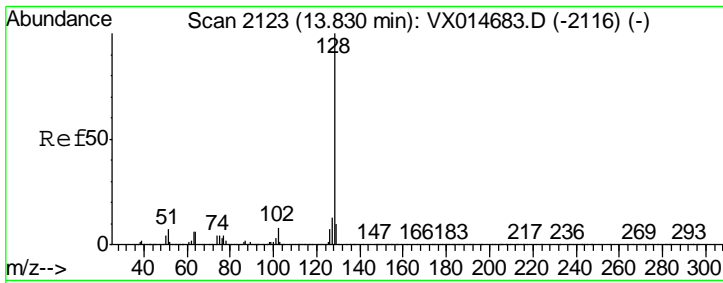
Tgt Ion: 75 Resp: 144393
 Ion Ratio Lower Upper
 75 100
 77 1.6 18.7 56.1#



#81
 trans-1,4-Dichloro-2-butene
 Concen: 58.512 ug/l
 RT: 11.13 min Scan# 1680
 Delta R.T. 0.06 min
 Lab File: VX014808.D
 Acq: 04 Feb 2020 15:45

Tgt Ion: 75 Resp: 144393
 Ion Ratio Lower Upper
 75 100
 53 0.4 78.8 118.2#
 89 0.1 35.4 53.0#





#95
 Naphthalene
 Concen: 1.356 ug/l
 RT: 13.83 min Scan# 2123
 Delta R.T. 0.00 min
 Lab File: VX014808.D
 Acq: 04 Feb 2020 15:45

Instrument : MSVOA_X
 ClientSampled : IBLK

Tot Ion	128	Resp	9157
Ion	Ratio	Lower	Upper
128	100		
127	14.8	10.3	15.5
129	16.8	8.6	12.8#

