

Data Path : Z:\voasrv\HPCHEM1\MSVOA\_X\Data\VX020525\  
 Data File : VX044844.D  
 Acq On : 05 Feb 2025 15:27  
 Operator : JC/MD  
 Sample : Q1250-04  
 Misc : 5.0mL/MSVOA\_X/WATER  
 ALS Vial : 14 Sample Multiplier: 1

Instrument :  
 MSVOA\_X  
 ClientSampleId :

Quant Time: Feb 06 04:39:55 2025  
 Quant Method : Z:\voasrv\HPCHEM1\MSVOA\_X\Method\82X011525W.M  
 Quant Title : SW846 8260  
 QLast Update : Thu Jan 16 01:16:09 2025  
 Response via : Initial Calibration

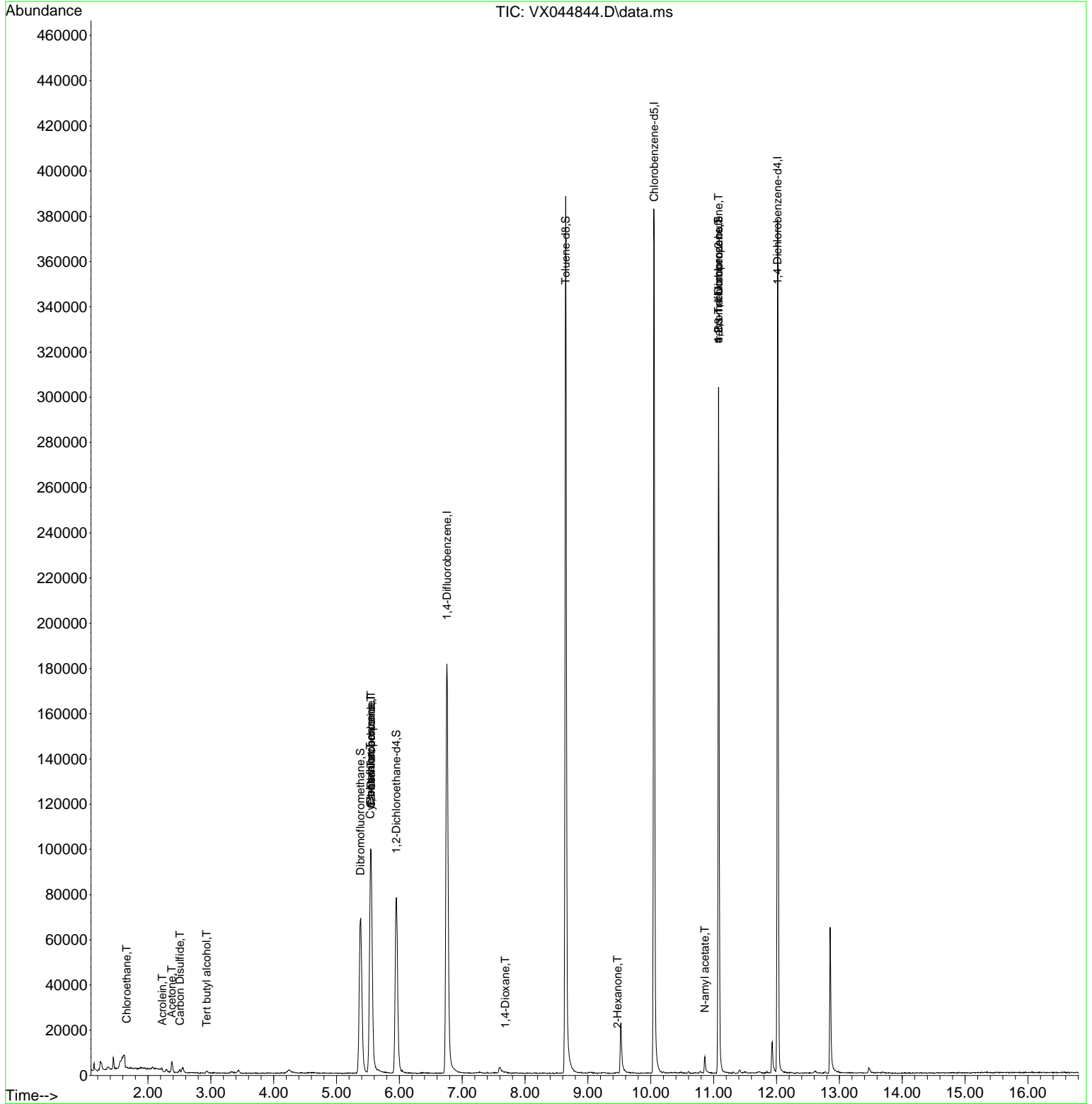
Compound	R.T.	QIon	Response	Conc	Units	Dev(Min)
-----						
Internal Standards						
1) Pentafluorobenzene	5.543	168	96567	50.000	ug/l	0.00
34) 1,4-Difluorobenzene	6.757	114	200426	50.000	ug/l	0.00
63) Chlorobenzene-d5	10.055	117	179324	50.000	ug/l	0.00
72) 1,4-Dichlorobenzene-d4	12.018	152	75535	50.000	ug/l	0.00
System Monitoring Compounds						
33) 1,2-Dichloroethane-d4	5.952	65	72469	49.718	ug/l	0.00
Spiked Amount	50.000	Range 74 - 125	Recovery	=	99.440%	
35) Dibromofluoromethane	5.379	113	62564	49.136	ug/l	0.00
Spiked Amount	50.000	Range 75 - 124	Recovery	=	98.280%	
50) Toluene-d8	8.646	98	238291	53.673	ug/l	0.00
Spiked Amount	50.000	Range 86 - 113	Recovery	=	107.340%	
62) 4-Bromofluorobenzene	11.079	95	80944	48.907	ug/l	0.00
Spiked Amount	50.000	Range 77 - 121	Recovery	=	97.820%	
Target Compounds						
					Qvalue	
6) Chloroethane	1.660	64	75	0.295	ug/l #	41
11) Tert butyl alcohol	2.934	59	247	0.760	ug/l #	85
13) Acrolein	2.227	56	131	0.857	ug/l #	69
16) Acetone	2.379	43	5015	8.696	ug/l	97
17) Carbon Disulfide	2.507	76	1565	0.507	ug/l #	88
31) Cyclohexane	5.537	56	2369	1.291	ug/l #	8
36) 1,1-Dichloropropene	5.549	75	8545	4.821	ug/l #	49
38) Carbon Tetrachloride	5.549	117	10254	5.143	ug/l #	16
49) 1,4-Dioxane	7.683	88	219	6.513	ug/l #	53
59) 2-Hexanone	9.469	43	354	0.251	ug/l #	59
74) N-amyl acetate	10.859	43	1444	0.475	ug/l #	12
76) 1,2,3-Trichloropropane	11.079	75	41453	22.613	ug/l #	32
81) trans-1,4-Dichloro-2-b...	11.079	75	41453	51.713	ug/l #	12
-----						

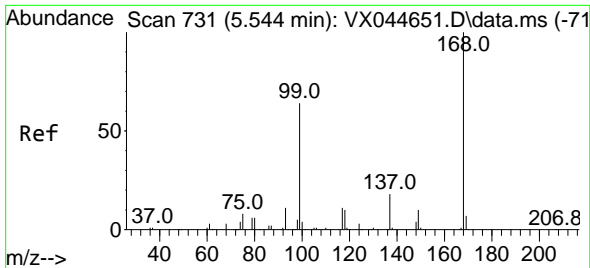
(#) = qualifier out of range (m) = manual integration (+) = signals summed

Data Path : Z:\voasrv\HPCHEM1\MSVOA\_X\Data\VX020525\  
 Data File : VX044844.D  
 Acq On : 05 Feb 2025 15:27  
 Operator : JC/MD  
 Sample : Q1250-04  
 Misc : 5.0mL/MSVOA\_X/WATER  
 ALS Vial : 14 Sample Multiplier: 1

Instrument :  
 MSVOA\_X  
 ClientSampleId :

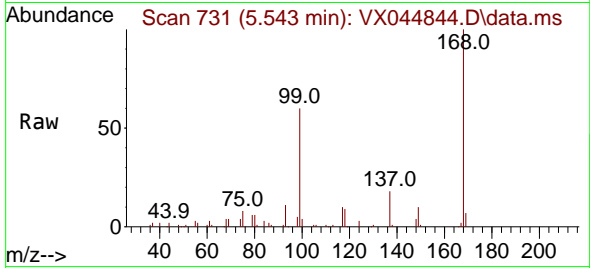
Quant Time: Feb 06 04:39:55 2025  
 Quant Method : Z:\voasrv\HPCHEM1\MSVOA\_X\Method\82X011525W.M  
 Quant Title : SW846 8260  
 QLast Update : Thu Jan 16 01:16:09 2025  
 Response via : Initial Calibration



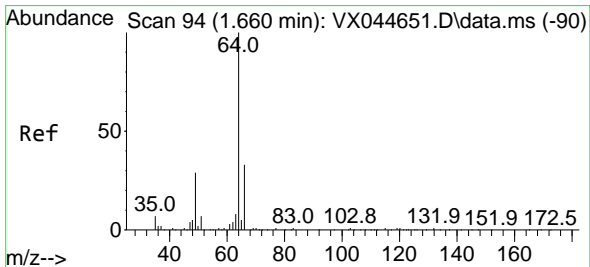
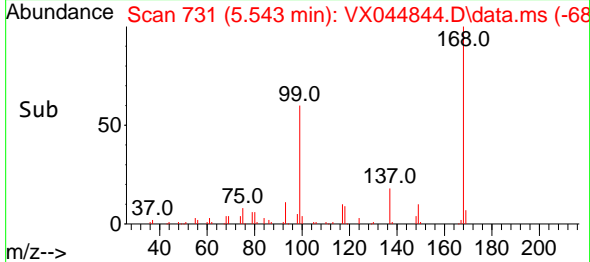
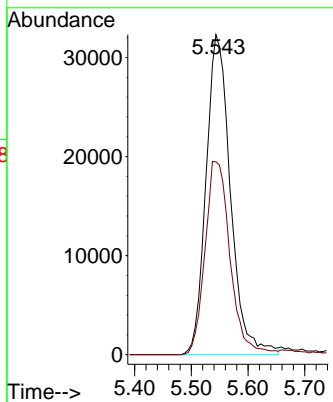


#1  
 Pentafluorobenzene  
 Concen: 50.000 ug/l  
 RT: 5.543 min Scan# 71  
 Delta R.T. -0.001 min  
 Lab File: VX044844.D  
 Acq: 05 Feb 2025 15:27

Instrument :  
 MSVOA\_X  
 ClientSampleId :

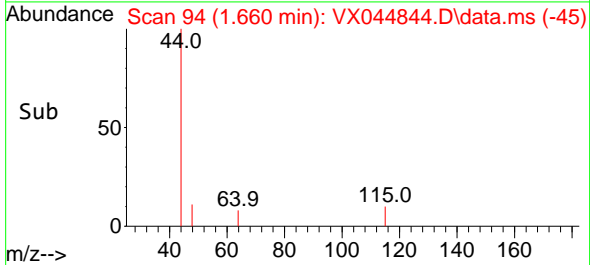
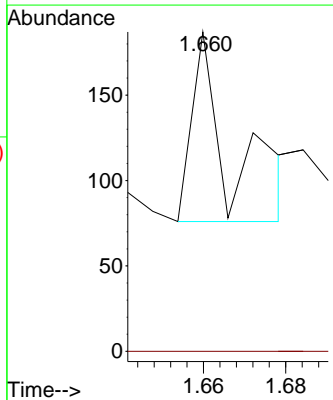
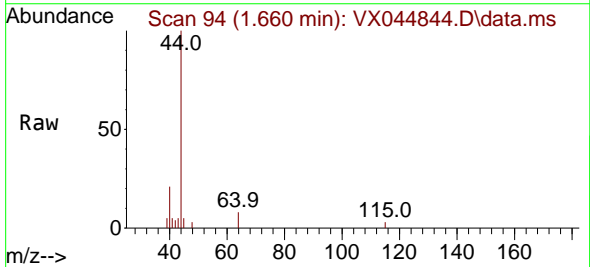


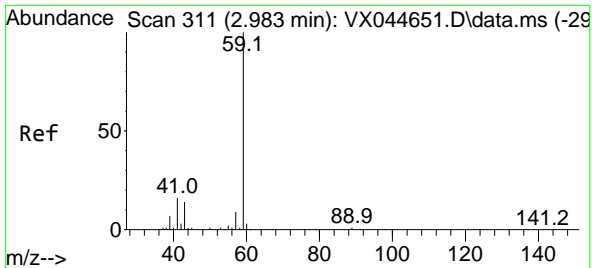
Tgt Ion:168 Resp: 96567  
 Ion Ratio Lower Upper  
 168 100  
 99 60.3 51.1 76.7



#6  
 Chloroethane  
 Concen: 0.295 ug/l  
 RT: 1.660 min Scan# 94  
 Delta R.T. -0.000 min  
 Lab File: VX044844.D  
 Acq: 05 Feb 2025 15:27

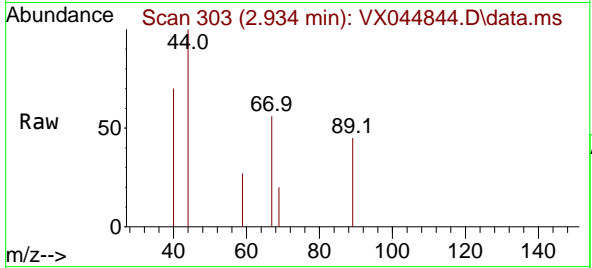
Tgt Ion: 64 Resp: 75  
 Ion Ratio Lower Upper  
 64 100  
 66 0.0 26.6 39.8#



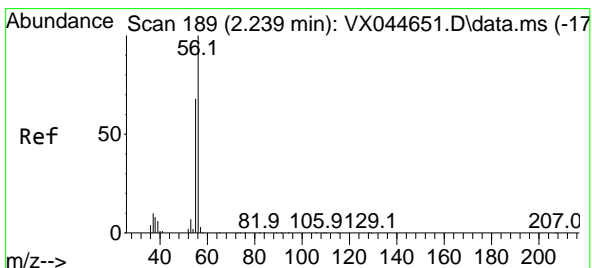
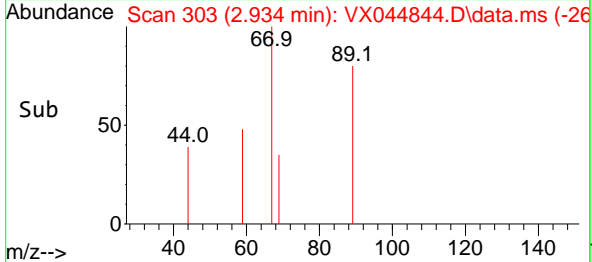
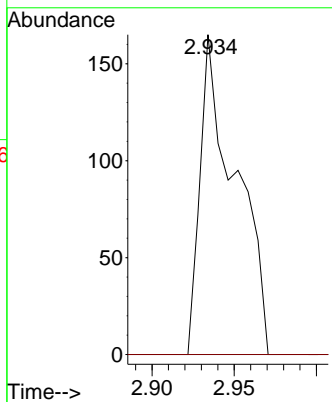


#11  
 Tert butyl alcohol  
 Concen: 0.760 ug/l  
 RT: 2.934 min Scan# 30  
 Delta R.T. -0.049 min  
 Lab File: VX044844.D  
 Acq: 05 Feb 2025 15:27

Instrument :  
 MSVOA\_X  
 ClientSampleId :

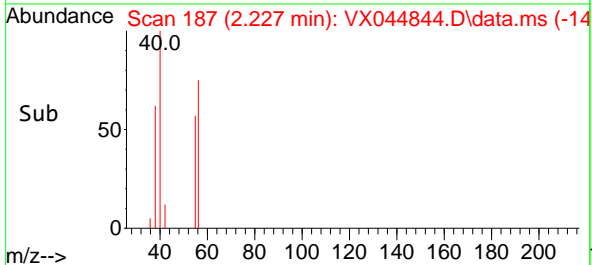
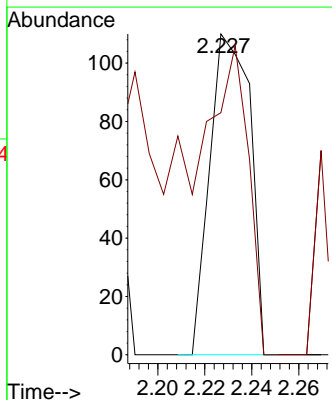
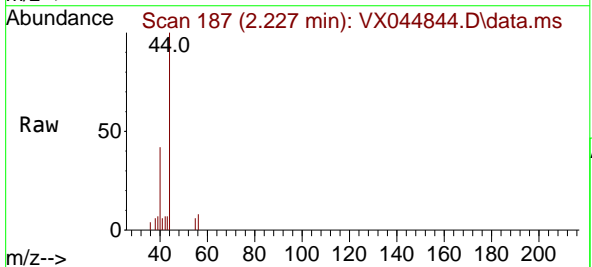


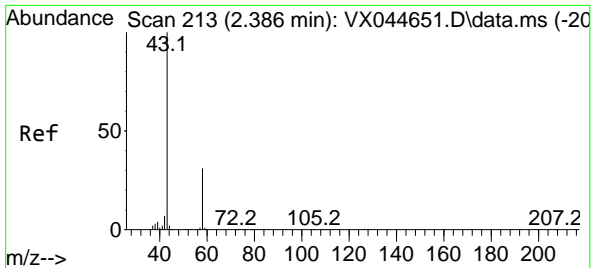
Tgt Ion: 59 Resp: 247  
 Ion Ratio Lower Upper  
 59 100  
 57 0.0 3.9 5.9#



#13  
 Acrolein  
 Concen: 0.857 ug/l  
 RT: 2.227 min Scan# 187  
 Delta R.T. -0.012 min  
 Lab File: VX044844.D  
 Acq: 05 Feb 2025 15:27

Tgt Ion: 56 Resp: 131  
 Ion Ratio Lower Upper  
 56 100  
 55 93.9 55.1 82.7#

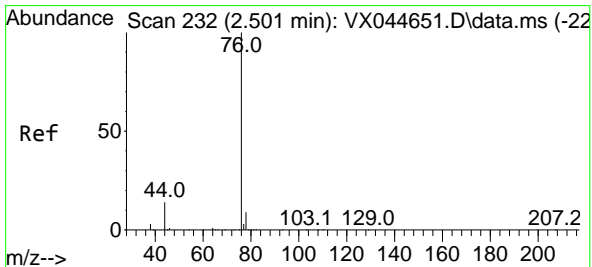
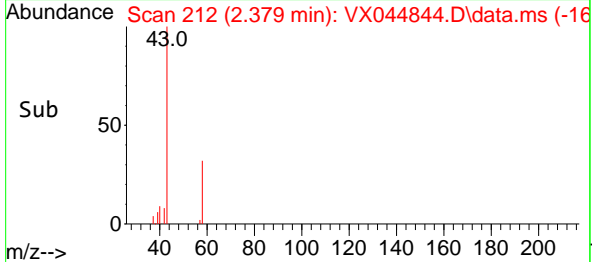
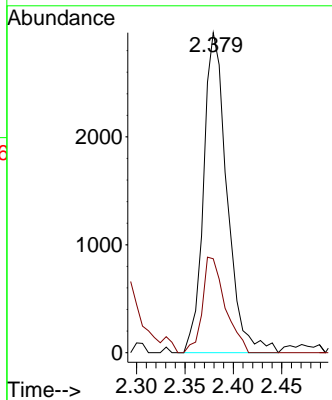
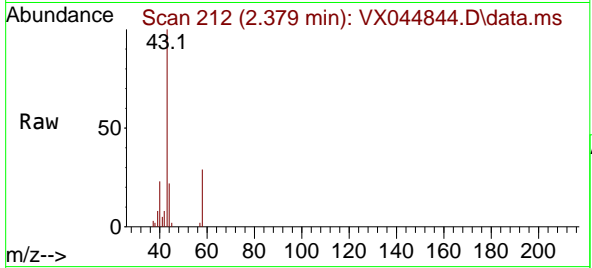




#16  
 Acetone  
 Concen: 8.696 ug/l  
 RT: 2.379 min Scan# 211  
 Delta R.T. -0.006 min  
 Lab File: VX044844.D  
 Acq: 05 Feb 2025 15:27

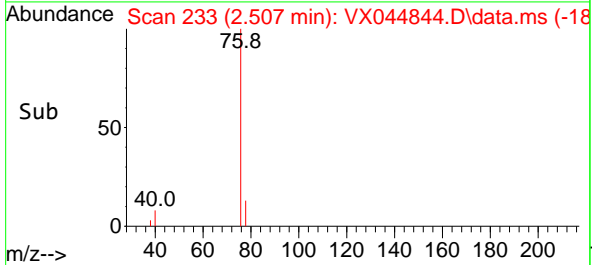
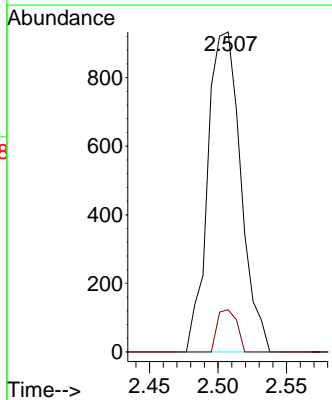
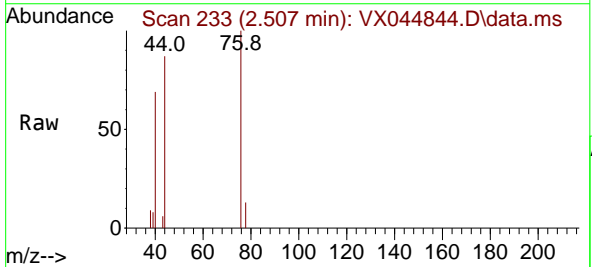
Instrument :  
 MSVOA\_X  
 ClientSampleId :

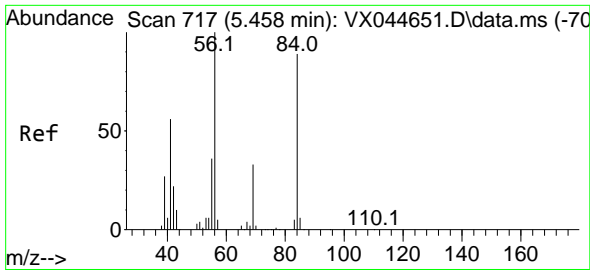
Tgt Ion: 43 Resp: 5015  
 Ion Ratio Lower Upper  
 43 100  
 58 29.4 24.6 37.0



#17  
 Carbon Disulfide  
 Concen: 0.507 ug/l  
 RT: 2.507 min Scan# 233  
 Delta R.T. 0.006 min  
 Lab File: VX044844.D  
 Acq: 05 Feb 2025 15:27

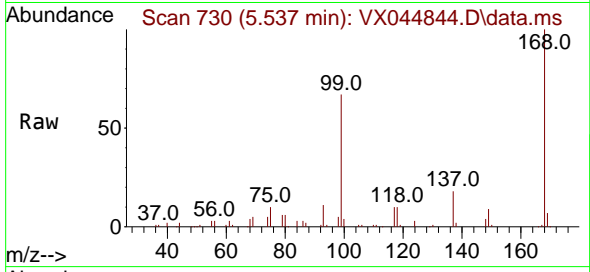
Tgt Ion: 76 Resp: 1565  
 Ion Ratio Lower Upper  
 76 100  
 78 13.2 7.1 10.7#



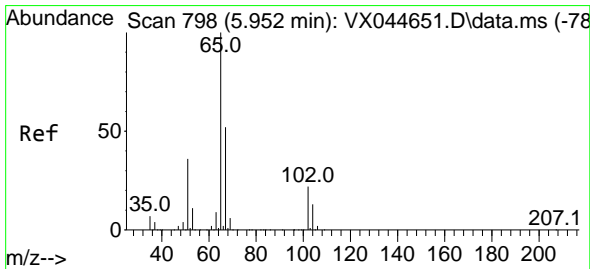
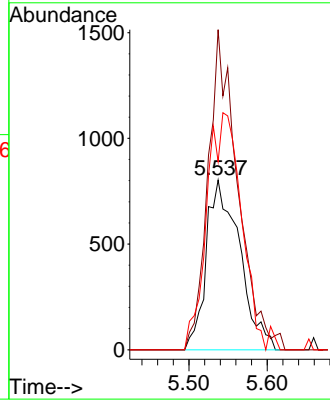
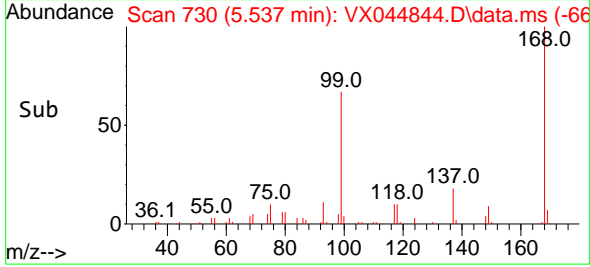


#31  
 Cyclohexane  
 Concen: 1.291 ug/l  
 RT: 5.537 min Scan# 717  
 Delta R.T. 0.079 min  
 Lab File: VX044844.D  
 Acq: 05 Feb 2025 15:27

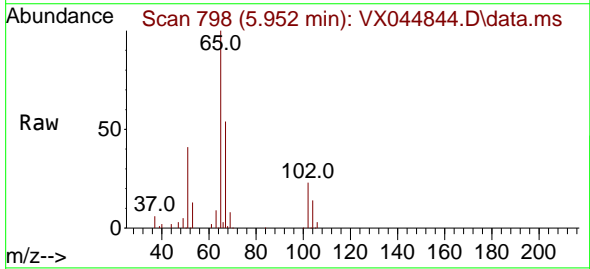
Instrument : MSVOA\_X  
 ClientSampleId :



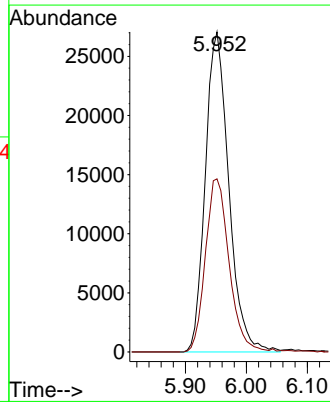
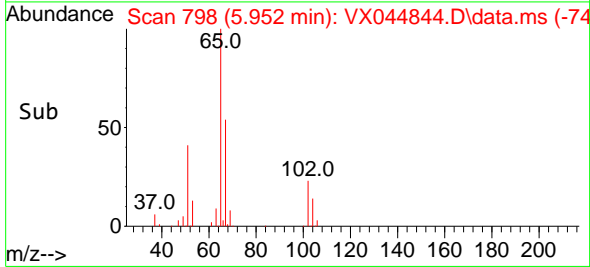
Tgt Ion: 56 Resp: 2369  
 Ion Ratio Lower Upper  
 56 100  
 69 188.5 26.8 40.2#  
 84 110.8 71.0 106.4#

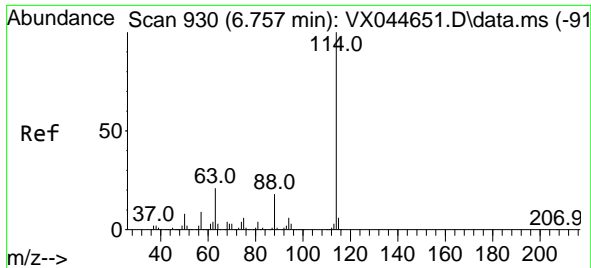


#33  
 1,2-Dichloroethane-d4  
 Concen: 49.718 ug/l  
 RT: 5.952 min Scan# 798  
 Delta R.T. -0.000 min  
 Lab File: VX044844.D  
 Acq: 05 Feb 2025 15:27



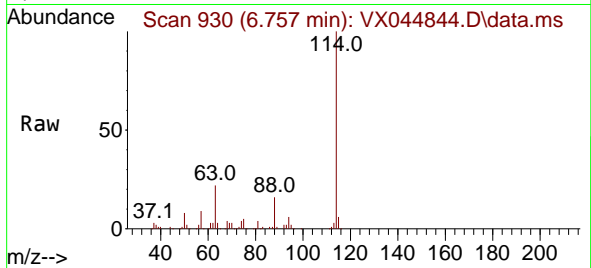
Tgt Ion: 65 Resp: 72469  
 Ion Ratio Lower Upper  
 65 100  
 67 54.6 0.0 103.4



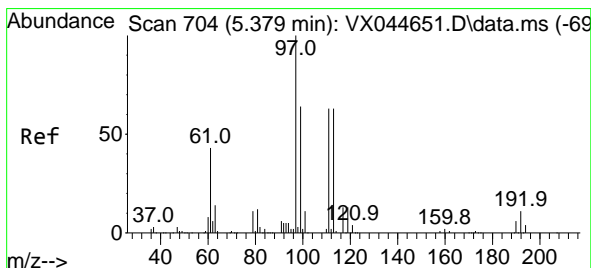
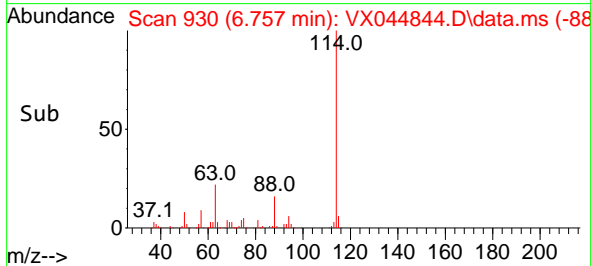
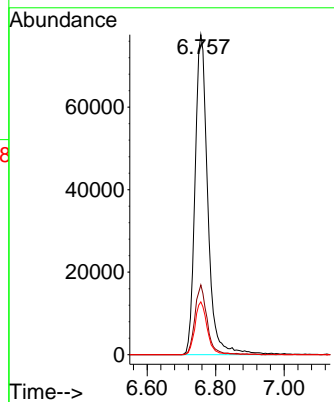


#34  
 1,4-Difluorobenzene  
 Concen: 50.000 ug/l  
 RT: 6.757 min Scan# 91  
 Delta R.T. -0.000 min  
 Lab File: VX044844.D  
 Acq: 05 Feb 2025 15:27

Instrument :  
 MSVOA\_X  
 ClientSampleId :

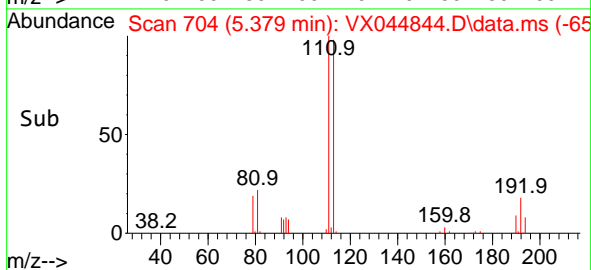
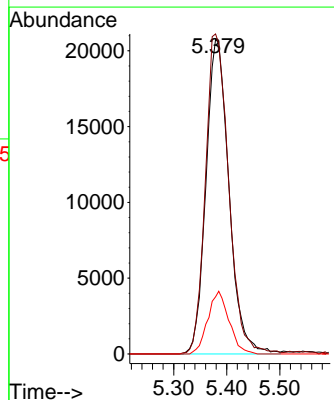
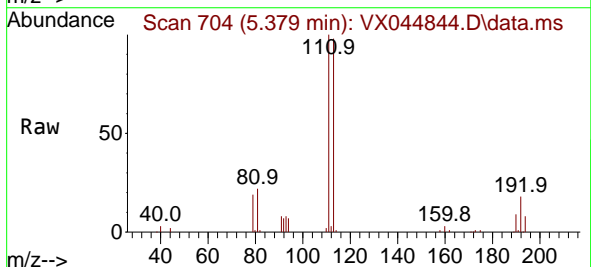


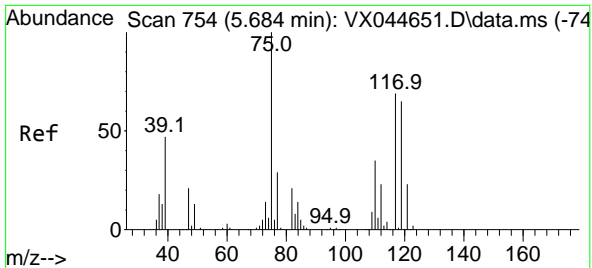
Tgt Ion:114 Resp: 200426  
 Ion Ratio Lower Upper  
 114 100  
 63 21.8 0.0 43.0  
 88 16.5 0.0 35.4



#35  
 Dibromofluoromethane  
 Concen: 49.136 ug/l  
 RT: 5.379 min Scan# 704  
 Delta R.T. -0.000 min  
 Lab File: VX044844.D  
 Acq: 05 Feb 2025 15:27

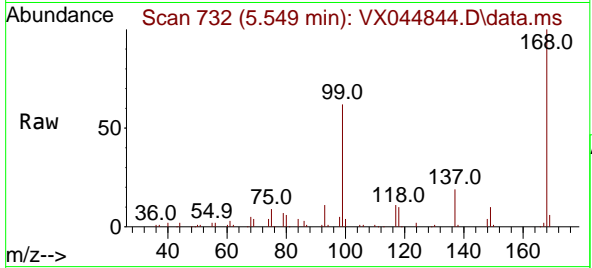
Tgt Ion:113 Resp: 62564  
 Ion Ratio Lower Upper  
 113 100  
 111 102.9 81.6 122.4  
 192 18.4 14.4 21.6



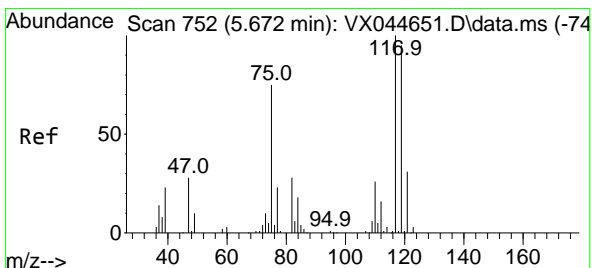
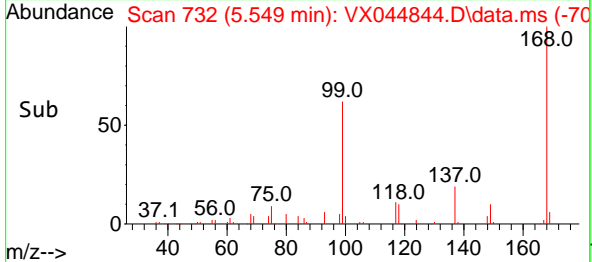
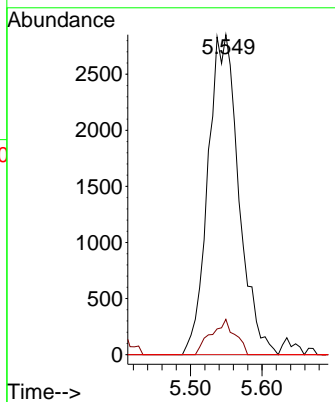


#36  
 1,1-Dichloropropene  
 Concen: 4.821 ug/l  
 RT: 5.549 min Scan# 711  
 Delta R.T. -0.134 min  
 Lab File: VX044844.D  
 Acq: 05 Feb 2025 15:27

Instrument :  
 MSVOA\_X  
 ClientSampleId :

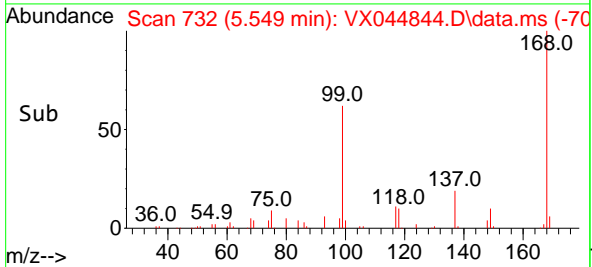
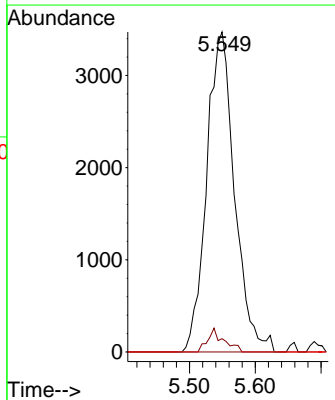
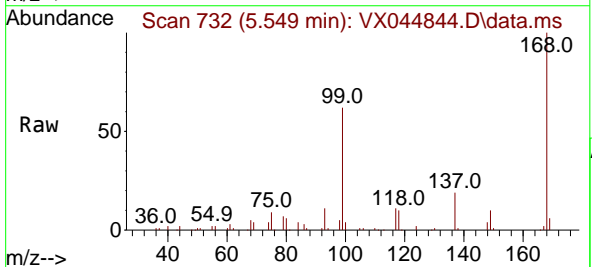


Tgt Ion: 75 Resp: 8545  
 Ion Ratio Lower Upper  
 75 100  
 110 8.5 17.9 53.8#  
 77 0.0 24.5 36.7#

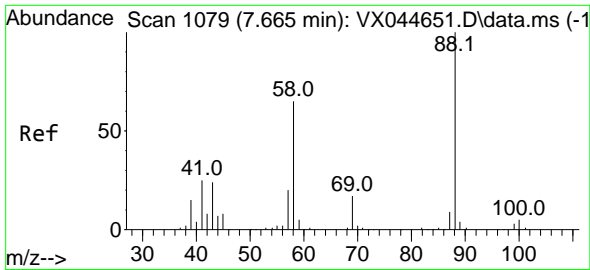


#38  
 Carbon Tetrachloride  
 Concen: 5.143 ug/l  
 RT: 5.549 min Scan# 732  
 Delta R.T. -0.122 min  
 Lab File: VX044844.D  
 Acq: 05 Feb 2025 15:27

Tgt Ion: 117 Resp: 10254  
 Ion Ratio Lower Upper  
 117 100  
 119 4.1 76.0 114.0#  
 121 0.0 24.6 36.8#

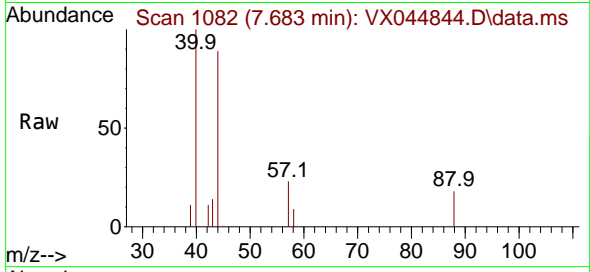




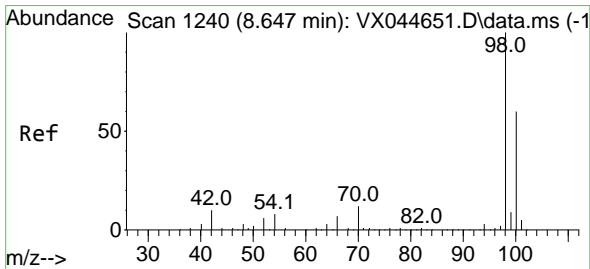
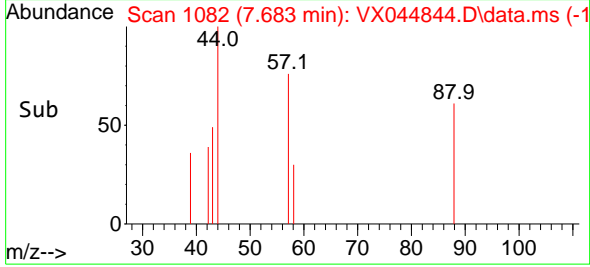
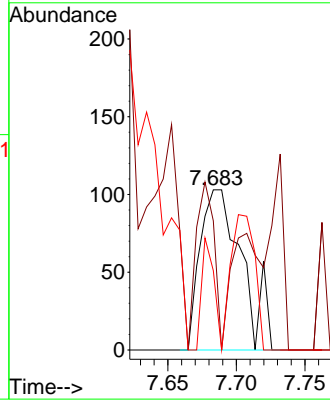


#49  
 1,4-Dioxane  
 Concen: 6.513 ug/l  
 RT: 7.683 min Scan# 1079  
 Delta R.T. 0.018 min  
 Lab File: VX044844.D  
 Acq: 05 Feb 2025 15:27

Instrument : MSVOA\_X  
 ClientSampleId :

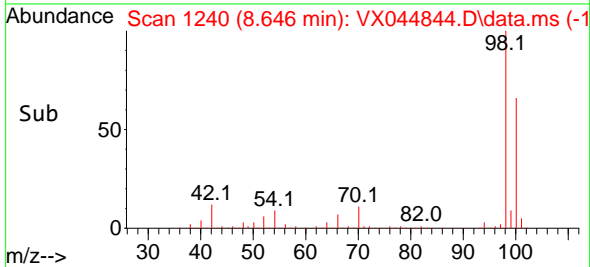
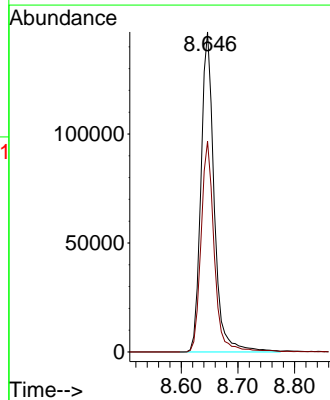
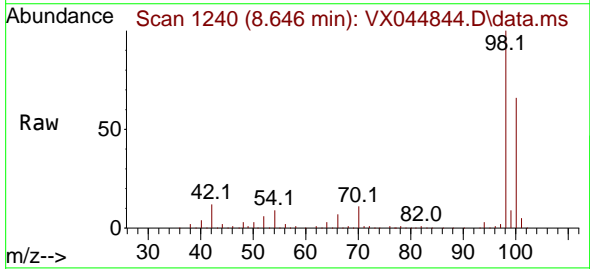


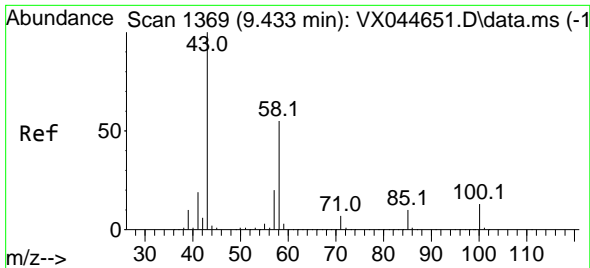
Tgt Ion: 88 Resp: 219  
 Ion Ratio Lower Upper  
 88 100  
 43 45.2 27.0 40.4#  
 58 20.5 55.8 83.8#



#50  
 Toluene-d8  
 Concen: 53.673 ug/l  
 RT: 8.646 min Scan# 1240  
 Delta R.T. -0.000 min  
 Lab File: VX044844.D  
 Acq: 05 Feb 2025 15:27

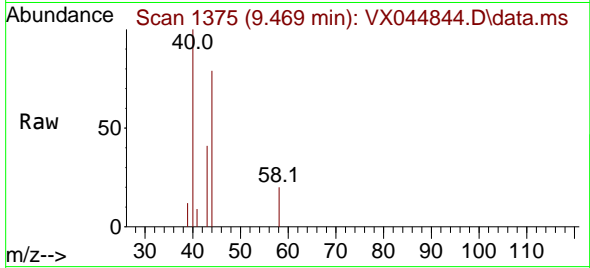
Tgt Ion: 98 Resp: 238291  
 Ion Ratio Lower Upper  
 98 100  
 100 65.6 53.2 79.8



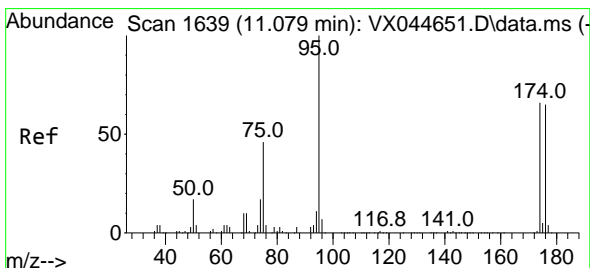
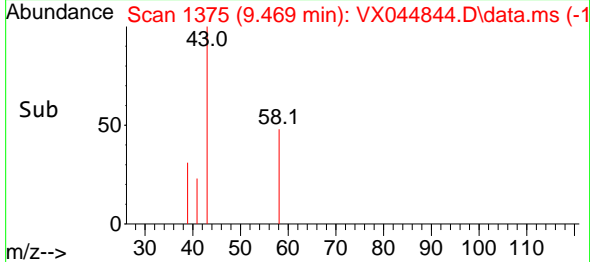
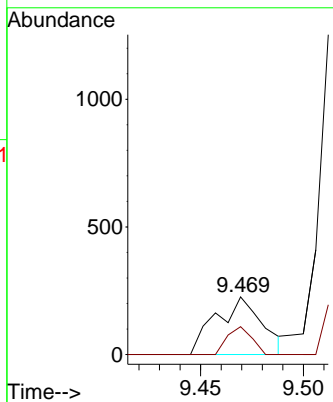


#59  
 2-Hexanone  
 Concen: 0.251 ug/l  
 RT: 9.469 min Scan# 11  
 Delta R.T. 0.036 min  
 Lab File: VX044844.D  
 Acq: 05 Feb 2025 15:27

Instrument :  
 MSVOA\_X  
 ClientSampleId :

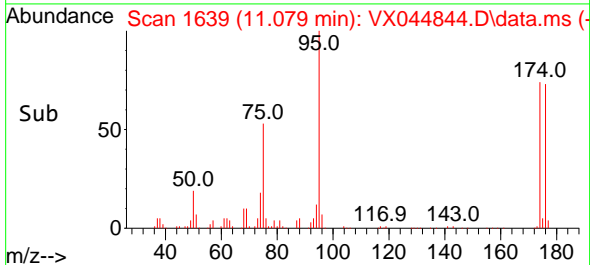
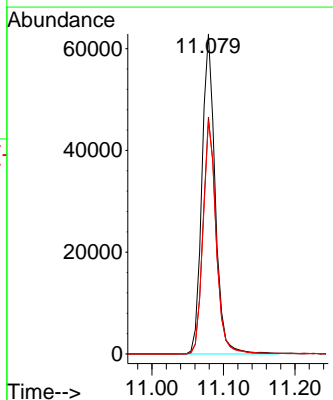
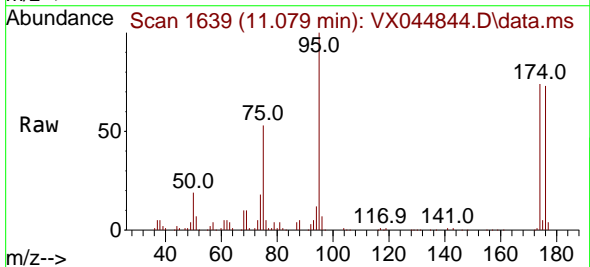


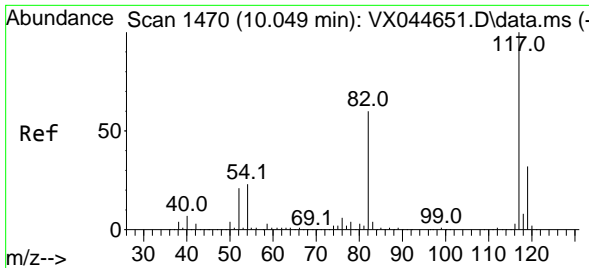
Tgt Ion: 43 Resp: 354  
 Ion Ratio Lower Upper  
 43 100  
 58 25.4 27.8 83.3#



#62  
 4-Bromofluorobenzene  
 Concen: 48.907 ug/l  
 RT: 11.079 min Scan# 1639  
 Delta R.T. -0.000 min  
 Lab File: VX044844.D  
 Acq: 05 Feb 2025 15:27

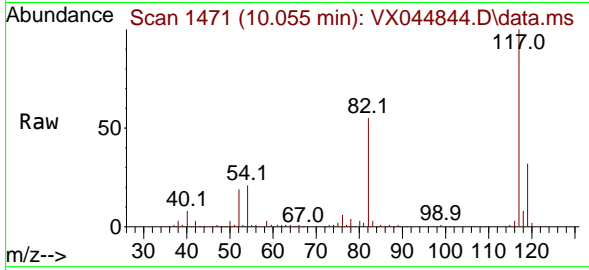
Tgt Ion: 95 Resp: 80944  
 Ion Ratio Lower Upper  
 95 100  
 174 72.9 0.0 133.0  
 176 72.3 0.0 129.4



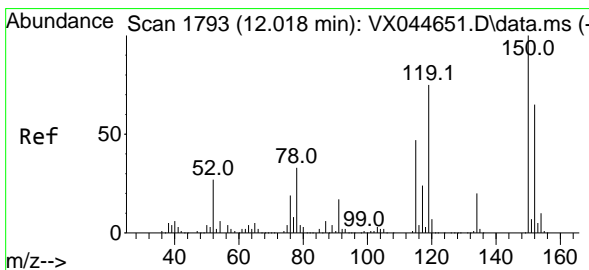
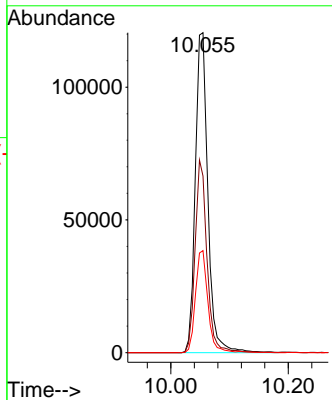
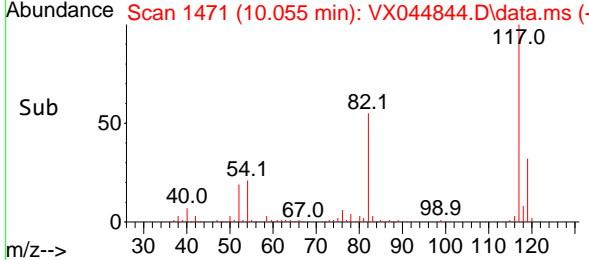


#63  
 Chlorobenzene-d5  
 Concen: 50.000 ug/l  
 RT: 10.055 min Scan# 1470  
 Delta R.T. 0.006 min  
 Lab File: VX044844.D  
 Acq: 05 Feb 2025 15:27

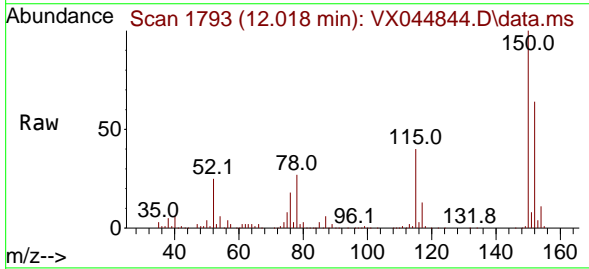
Instrument : MSVOA\_X  
 ClientSampleId :



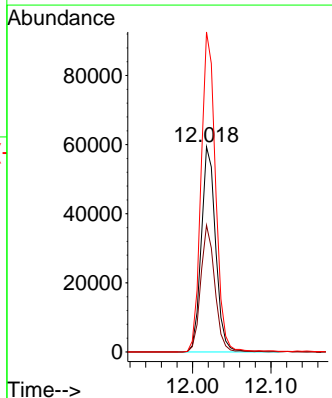
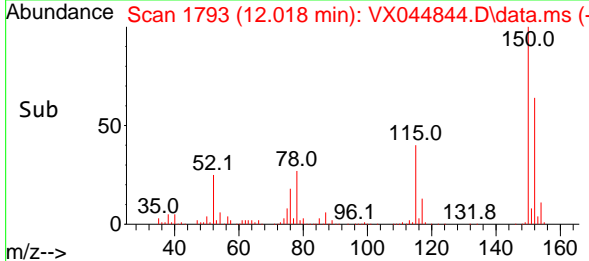
Tgt Ion:117 Resp: 179324  
 Ion Ratio Lower Upper  
 117 100  
 82 55.2 47.6 71.4  
 119 31.9 25.4 38.2

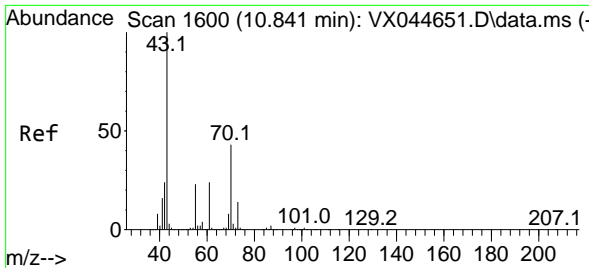


#72  
 1,4-Dichlorobenzene-d4  
 Concen: 50.000 ug/l  
 RT: 12.018 min Scan# 1793  
 Delta R.T. -0.000 min  
 Lab File: VX044844.D  
 Acq: 05 Feb 2025 15:27



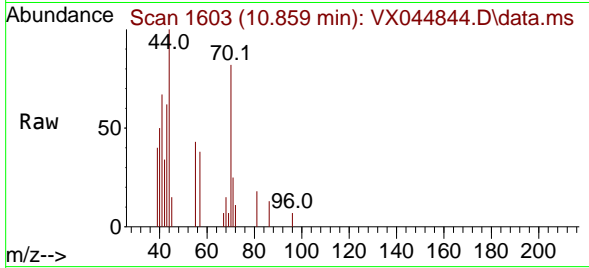
Tgt Ion:152 Resp: 75535  
 Ion Ratio Lower Upper  
 152 100  
 115 60.7 43.8 131.4  
 150 157.5 0.0 347.8



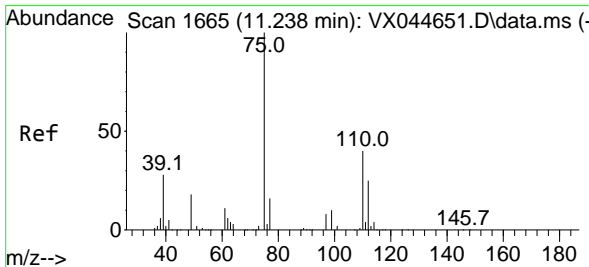
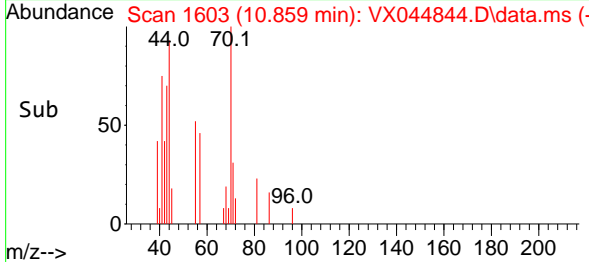
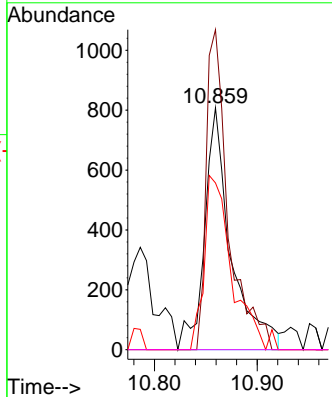


#74  
 N-amy1 acetate  
 Concen: 0.475 ug/l  
 RT: 10.859 min Scan# 1603  
 Delta R.T. 0.018 min  
 Lab File: VX044844.D  
 Acq: 05 Feb 2025 15:27

Instrument : MSVOA\_X  
 ClientSampleId :

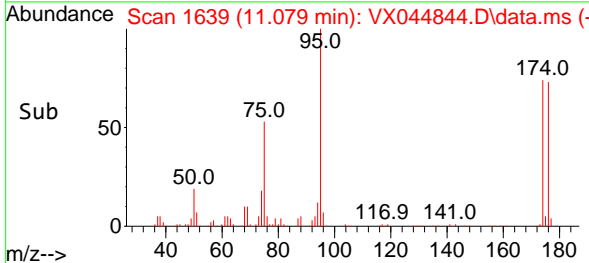
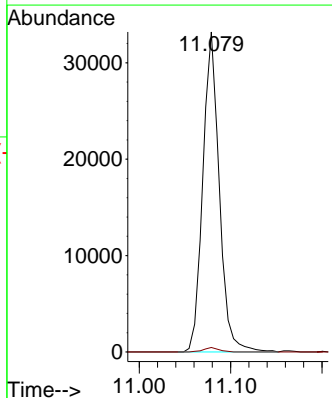
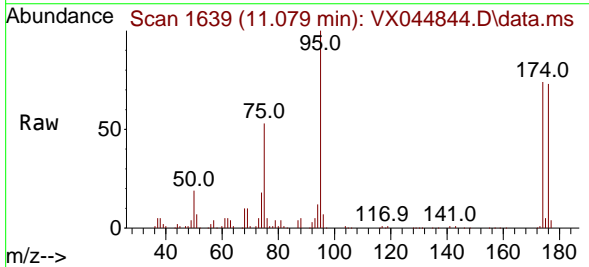


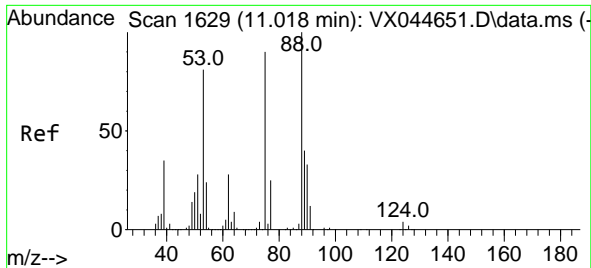
Tgt Ion	Resp	Lower	Upper
43	1444		
43	100		
70	110.5	35.2	52.8#
55	73.8	19.0	28.4#
61	0.0	20.0	30.0#



#76  
 1,2,3-Trichloropropane  
 Concen: 22.613 ug/l  
 RT: 11.079 min Scan# 1639  
 Delta R.T. -0.159 min  
 Lab File: VX044844.D  
 Acq: 05 Feb 2025 15:27

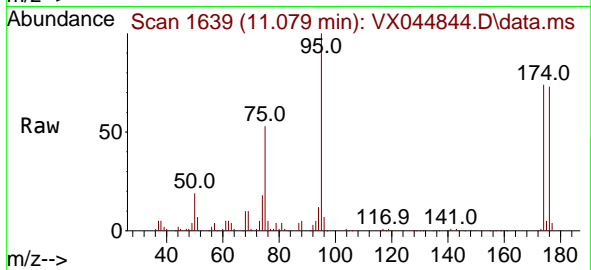
Tgt Ion	Resp	Lower	Upper
75	41453		
75	100		
77	1.3	23.4	70.2#





#81  
 trans-1,4-Dichloro-2-butene  
 Concen: 51.713 ug/l  
 RT: 11.079 min Scan# 1  
 Delta R.T. 0.061 min  
 Lab File: VX044844.D  
 Acq: 05 Feb 2025 15:27

Instrument :  
 MSVOA\_X  
 ClientSampleId :



Tgt Ion: 75 Resp: 41453

Ion	Ratio	Lower	Upper
75	100		
53	0.0	74.3	111.5#
89	0.0	37.4	56.0#

