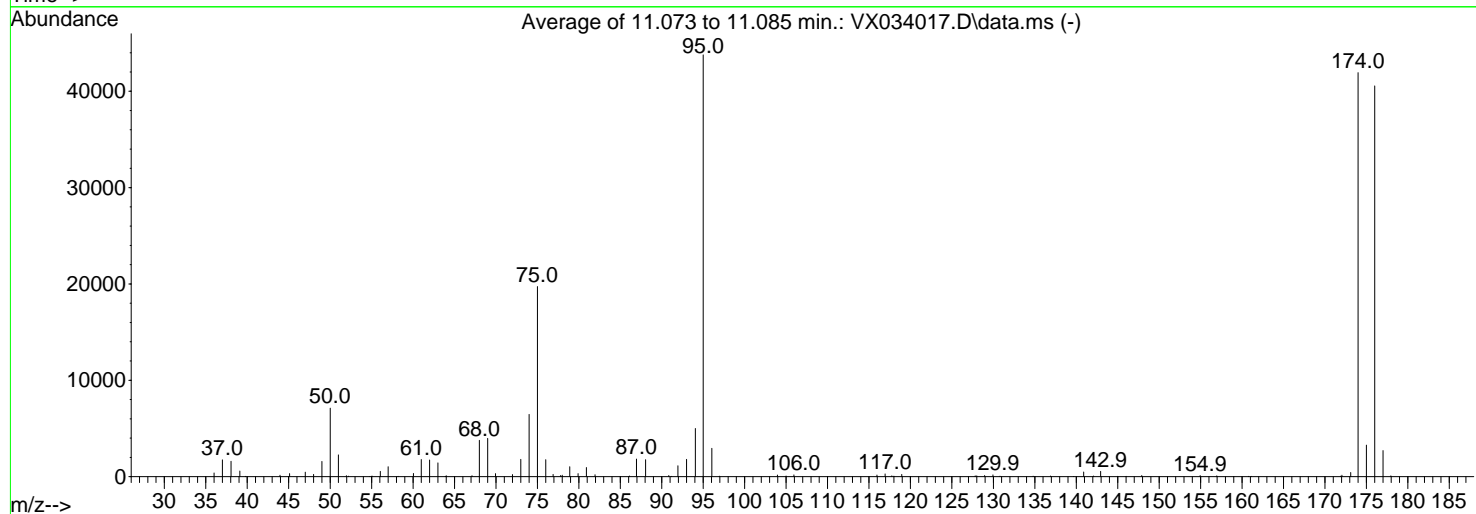
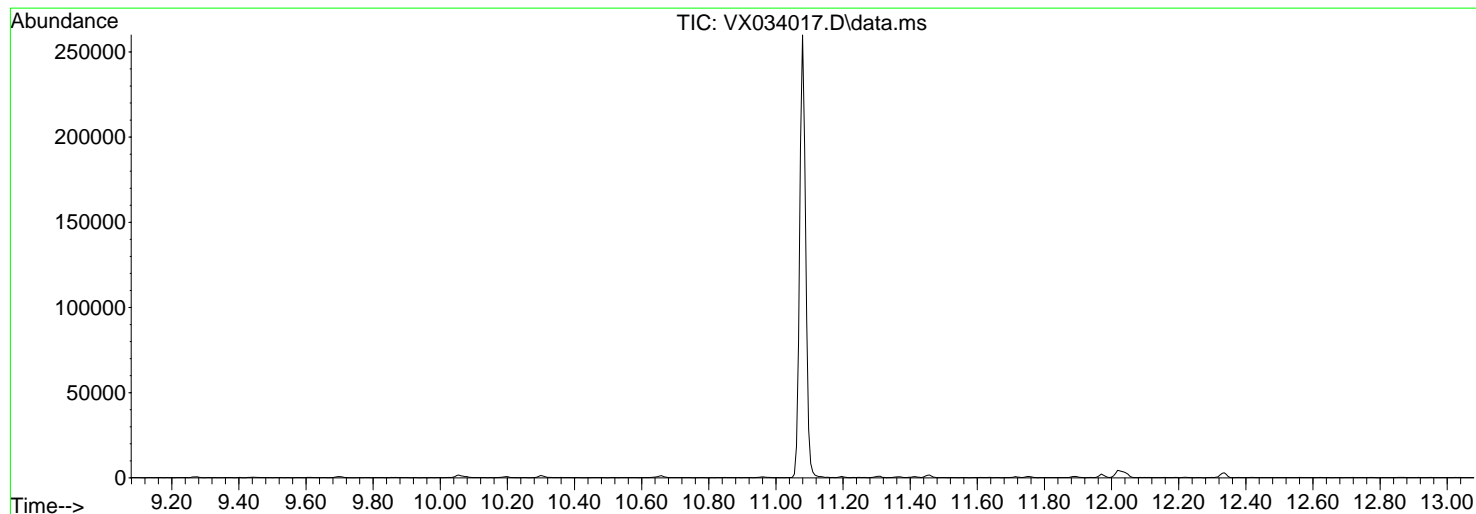


Data Path : Z:\voasrv\HPCHEM1\MSVOA_X\Data\VX020623\
 Data File : VX034017.D
 Acq On : 06 Feb 2023 08:58
 Operator : JC/MD
 Sample : BFB609
 Misc : 5.0mL/MSVOA_X/WATER
 ALS Vial : 1 Sample Multiplier: 1

Instrument :
 MSVOA_X
 ClientSampleId :
 BFB609

Integration File: LSCINT.P

Method : Z:\voasrv\HPCHEM1\MSVOA_X\Method\SFAMXLM020223WMA.M
 Title : VOC Analysis
 Last Update : Tue Feb 07 03:27:39 2023



AutoFind: Scans 1638, 1639, 1640; Background Corrected with Scan 1632

Target Mass	Rel. to Mass	Lower Limit%	Upper Limit%	Rel. Abn%	Raw Abn	Result Pass/Fail
50	95	15	40	16.2	7101	PASS
75	95	30	80	45.1	19731	PASS
95	95	100	100	100.0	43779	PASS
96	95	5	9	6.7	2939	PASS
173	174	0.00	2	1.0	433	PASS
174	95	50	120	95.8	41939	PASS
175	174	5	9	7.8	3280	PASS
176	174	95	101	96.7	40555	PASS
177	176	5	9	6.7	2713	PASS

m/z	Abundance
40.00	76.0
44.10	74.0

Instrument :
MSVOA_X
ClientSampleId :
BFB609

m/z	Abundance
36.00	416.0
37.00	1789.0
38.10	1589.0
39.10	528.0
39.80	122.0
44.00	282.0
45.10	368.0
47.00	525.0
48.00	325.0
49.00	1425.0
50.00	7154.0
51.00	2363.0
51.90	183.0
55.00	62.0
56.10	527.0
57.00	992.0
58.20	72.0
60.00	307.0
61.00	1816.0
62.00	1754.0
63.00	1471.0
63.90	142.0
67.10	123.0
68.00	4002.0
69.00	3750.0
69.90	263.0
72.00	186.0
73.00	1792.0
74.00	6401.0
75.00	19184.0
76.00	1801.0
76.90	210.0
77.80	174.0
78.90	949.0
79.90	310.0
80.90	917.0
81.90	207.0
86.10	73.0
87.00	1785.0
88.00	1862.0
90.80	123.0
91.20	115.0
92.00	929.0
93.00	1757.0
94.00	4666.0
95.00	41136.0
96.00	2761.0
96.90	85.0
104.00	135.0
104.90	63.0
106.00	145.0
116.00	178.0
116.90	233.0
117.70	93.0
119.00	258.0
127.80	116.0
129.10	78.0
129.90	125.0
130.80	65.0
134.80	56.0
136.80	94.0
140.90	401.0
142.10	51.0
142.90	464.0
148.00	110.0
155.00	105.0
157.00	59.0
160.80	55.0
171.90	145.0
174.00	33720.0
175.00	2948.0
176.00	32320.0
177.00	2335.0
177.90	78.0

Instrument :
MSVOA_X
ClientSampleId :
BFB609

m/z	Abundance
36.00	446.0
37.00	2041.0
38.10	1943.0
39.10	728.0
40.00	108.0
43.90	194.0
45.10	364.0
47.00	586.0
48.00	187.0
49.00	1988.0
50.00	8581.0
51.00	2597.0
52.20	155.0
55.10	148.0
56.00	698.0
57.00	1380.0
58.20	56.0
60.00	435.0
61.00	2203.0
62.00	2245.0
63.00	1718.0
64.10	136.0
67.10	129.0
68.00	4221.0
69.00	4961.0
70.00	452.0
72.10	252.0
73.00	1985.0
74.00	7787.0
75.00	23352.0
76.00	2082.0
77.00	354.0
78.00	285.0
78.90	1252.0
79.90	326.0
80.90	1131.0
82.00	259.0
86.10	111.0
86.90	2189.0
88.00	1871.0
90.80	135.0
91.90	1478.0
93.00	2148.0
94.00	6116.0
95.00	52728.0
96.10	3868.0
97.00	85.0
103.90	198.0
105.00	90.0
105.90	169.0
116.00	181.0
117.00	376.0
117.80	174.0
119.00	285.0
128.00	232.0
128.90	167.0
129.90	259.0
130.80	73.0
134.80	78.0
136.90	78.0
139.70	54.0
141.00	590.0
142.10	86.0
143.00	590.0
145.00	88.0
146.00	56.0
147.90	138.0
154.90	117.0
157.00	132.0
160.80	57.0
161.10	70.0
172.10	201.0
173.10	735.0
174.00	50624.0
175.00	3842.0
176.00	48360.0
177.00	3221.0
178.00	102.0

Instrument :
MSVOA_X
ClientSampleId :
BFB609

m/z	Abundance
36.00	298.0
37.00	1413.0
38.00	1260.0
39.10	478.0
39.90	118.0
44.00	200.0
45.00	222.0
47.10	293.0
48.00	192.0
49.00	1342.0
50.00	5567.0
51.00	1799.0
52.00	98.0
54.80	62.0
56.00	402.0
57.00	740.0
60.10	270.0
61.00	1294.0
62.00	1191.0
63.00	1112.0
64.00	98.0
67.10	70.0
68.00	3067.0
69.00	3179.0
70.00	229.0
71.90	191.0
73.00	1625.0
74.00	5195.0
75.00	16656.0
76.00	1417.0
76.80	158.0
77.80	160.0
78.00	146.0
78.90	902.0
79.90	337.0
80.90	791.0
82.00	158.0
87.00	1523.0
88.10	1540.0
90.90	106.0
92.00	970.0
93.00	1476.0
94.10	4222.0
95.00	37472.0
96.00	2189.0
104.00	161.0
105.10	61.0
105.90	222.0
115.90	133.0
117.00	253.0
118.00	144.0
118.80	166.0
127.80	142.0
129.00	85.0
130.00	158.0
135.00	55.0
137.00	54.0
140.80	467.0
142.10	53.0
142.90	593.0
146.00	50.0
147.80	116.0
155.00	111.0
156.90	69.0
159.00	75.0
161.10	53.0
172.00	231.0
173.10	565.0
174.00	41472.0
175.00	3049.0
176.00	40984.0
177.00	2582.0
178.00	75.0

Instrument :
MSVOA_X
ClientSampleId :
BFB609