

Data Path : Z:\voasrv\HPCHEM1\MSVOA_X\Data\VX020722\
 Data File : VX026788.D
 Acq On : 07 Feb 2022 16:38
 Operator : JC/MD
 Sample : N1359-05
 Misc : 5.0mL/MSVOA_X/WATER
 ALS Vial : 16 Sample Multiplier: 1

Instrument :
 MSVOA_X
 ClientSampleId :
 MW-19R

Quant Time: Feb 07 23:31:03 2022
 Quant Method : Z:\voasrv\HPCHEM1\MSVOA_X\Method\82X011122W.M
 Quant Title : SW846 8260
 QLast Update : Tue Jan 11 14:45:13 2022
 Response via : Initial Calibration

Compound	R.T.	QIon	Response	Conc	Units	Dev(Min)

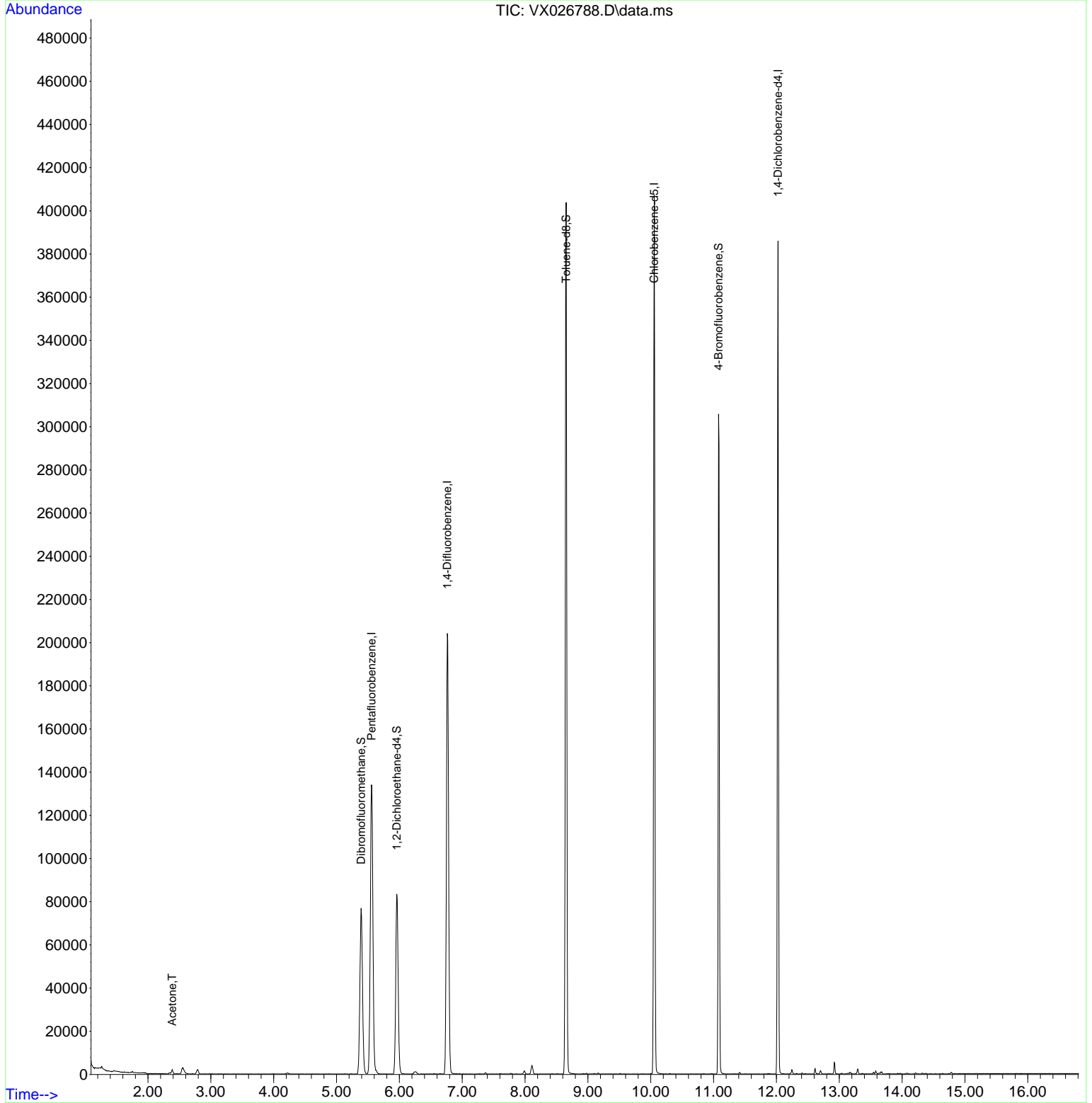
Internal Standards						
1) Pentafluorobenzene	5.556	168	129113	50.000	ug/l	0.00
34) 1,4-Difluorobenzene	6.763	114	215162	50.000	ug/l	0.00
63) Chlorobenzene-d5	10.055	117	182873	50.000	ug/l	0.00
72) 1,4-Dichlorobenzene-d4	12.024	152	76902	50.000	ug/l	0.00
System Monitoring Compounds						
33) 1,2-Dichloroethane-d4	5.958	65	81368	45.114	ug/l	0.00
Spiked Amount	50.000	Range	78 - 117	Recovery	=	90.220%
35) Dibromofluoromethane	5.391	113	66998	48.219	ug/l	0.00
Spiked Amount	50.000	Range	75 - 124	Recovery	=	96.440%
50) Toluene-d8	8.653	98	244335	48.799	ug/l	0.00
Spiked Amount	50.000	Range	92 - 112	Recovery	=	97.600%
62) 4-Bromofluorobenzene	11.079	95	85317	47.967	ug/l	0.00
Spiked Amount	50.000	Range	83 - 123	Recovery	=	95.940%
Target Compounds						
16) Acetone	2.386	43	2254	2.451	ug/l #	83

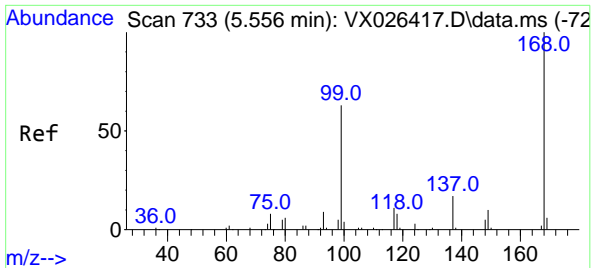
(#) = qualifier out of range (m) = manual integration (+) = signals summed

Data Path : Z:\voasrv\HPCHEM1\MSVOA_X\Data\VX020722\
 Data File : VX026788.D
 Acq On : 07 Feb 2022 16:38
 Operator : JC/MD
 Sample : N1359-05
 Misc : 5.0mL/MSVOA_X/WATER
 ALS Vial : 16 Sample Multiplier: 1

Instrument :
 MSVOA_X
 ClientSampleId :
 MW-19R

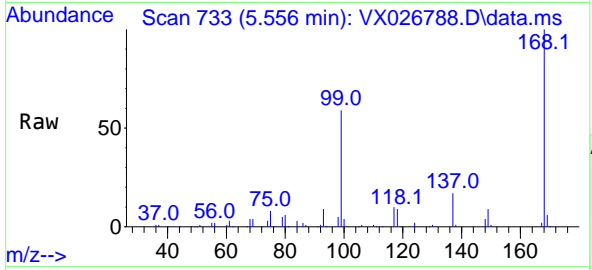
Quant Time: Feb 07 23:31:03 2022
 Quant Method : Z:\voasrv\HPCHEM1\MSVOA_X\Method\82X011122W.M
 Quant Title : SW846 8260
 QLast Update : Tue Jan 11 14:45:13 2022
 Response via : Initial Calibration



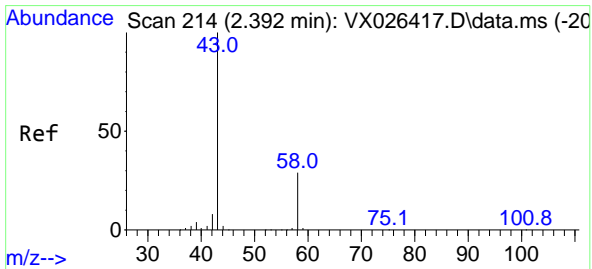
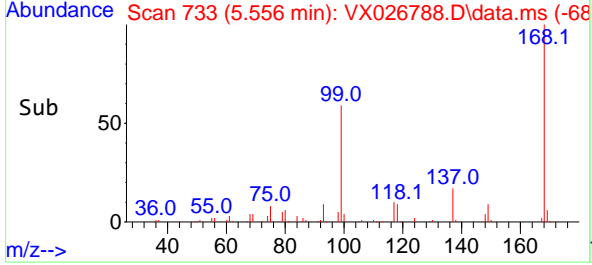
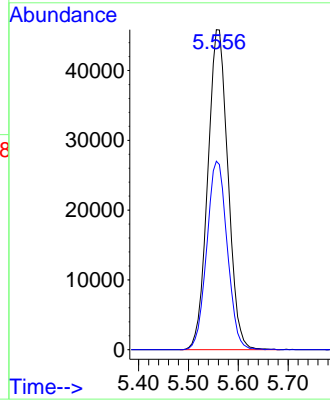


#1
 Pentafluorobenzene
 Concen: 50.000 ug/l
 RT: 5.556 min Scan# 71
 Delta R.T. -0.000 min
 Lab File: VX026788.D
 Acq: 07 Feb 2022 16:38

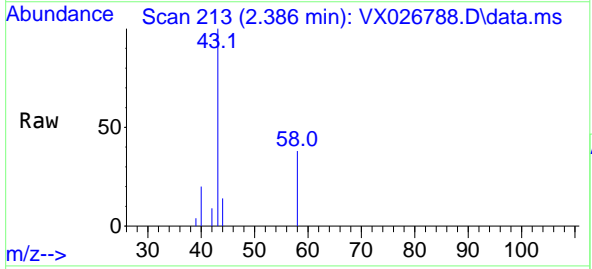
Instrument : MSVOA_X
 ClientSampleId : MW-19R



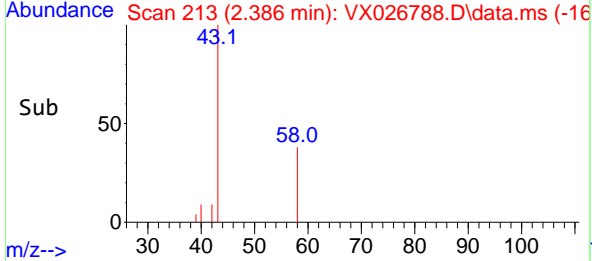
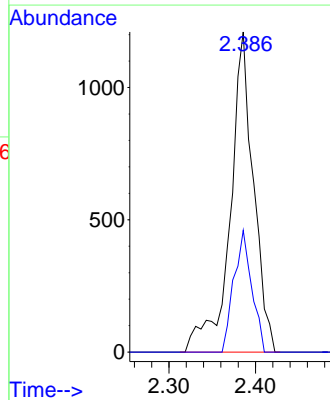
Tgt Ion:168 Resp: 129113
 Ion Ratio Lower Upper
 168 100
 99 58.9 50.3 75.5

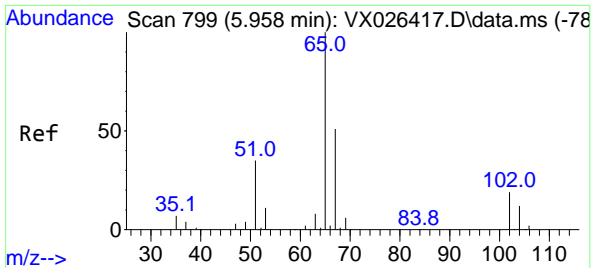


#16
 Acetone
 Concen: 2.451 ug/l
 RT: 2.386 min Scan# 213
 Delta R.T. -0.006 min
 Lab File: VX026788.D
 Acq: 07 Feb 2022 16:38



Tgt Ion: 43 Resp: 2254
 Ion Ratio Lower Upper
 43 100
 58 38.0 23.0 34.6#

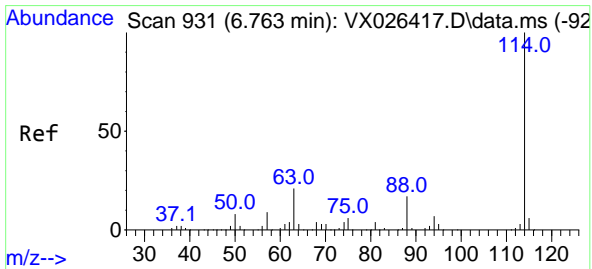
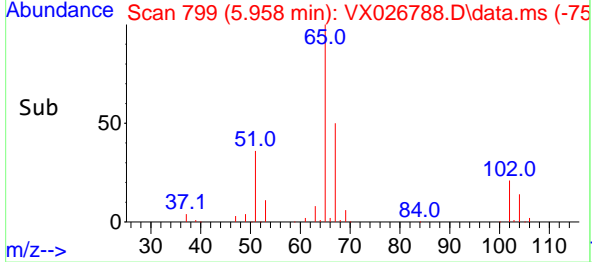
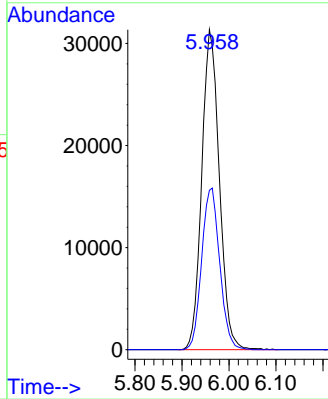
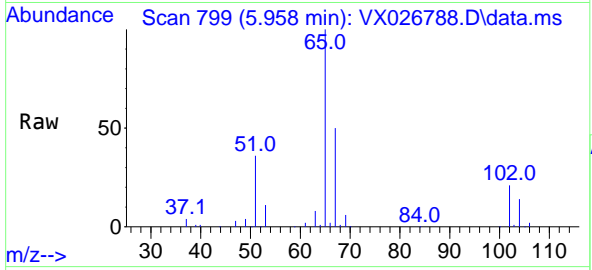




#33
 1,2-Dichloroethane-d4
 Concen: 45.114 ug/l
 RT: 5.958 min Scan# 799
 Delta R.T. 0.000 min
 Lab File: VX026788.D
 Acq: 07 Feb 2022 16:38

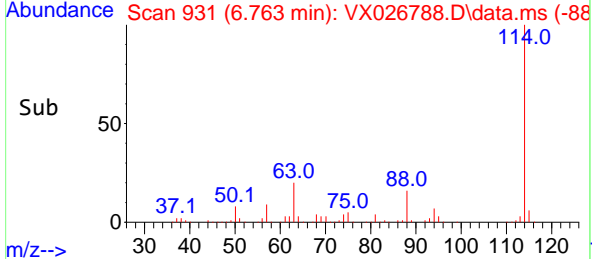
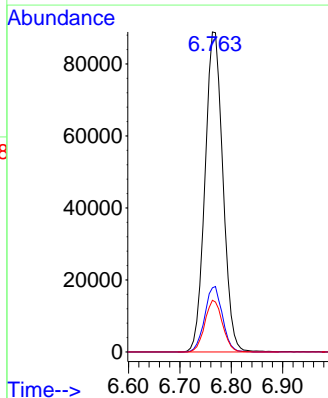
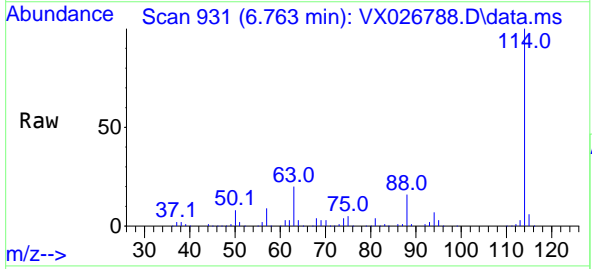
Instrument : MSVOA_X
 ClientSampleId : MW-19R

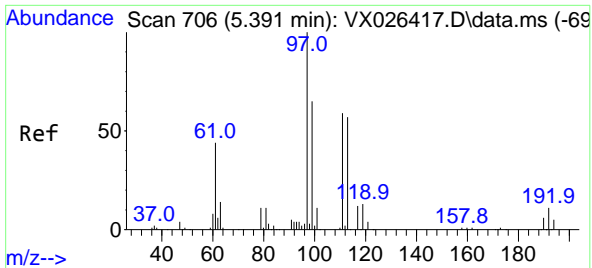
Tgt Ion: 65 Resp: 81368
 Ion Ratio Lower Upper
 65 100
 67 51.7 0.0 100.8



#34
 1,4-Difluorobenzene
 Concen: 50.000 ug/l
 RT: 6.763 min Scan# 931
 Delta R.T. 0.000 min
 Lab File: VX026788.D
 Acq: 07 Feb 2022 16:38

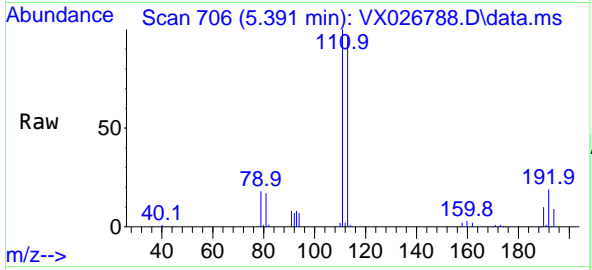
Tgt Ion: 114 Resp: 215162
 Ion Ratio Lower Upper
 114 100
 63 20.1 0.0 42.8
 88 16.2 0.0 33.0





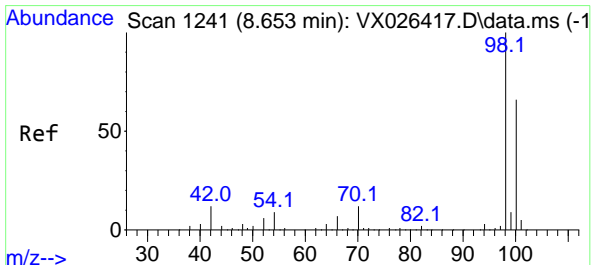
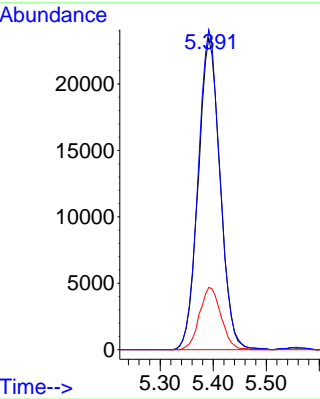
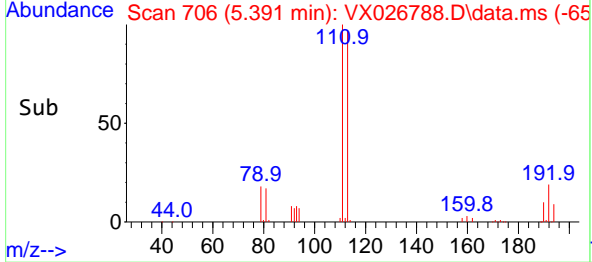
#35
 Dibromofluoromethane
 Concen: 48.219 ug/l
 RT: 5.391 min Scan# 706
 Delta R.T. 0.000 min
 Lab File: VX026788.D
 Acq: 07 Feb 2022 16:38

Instrument : MSVOA_X
 ClientSampleId : MW-19R

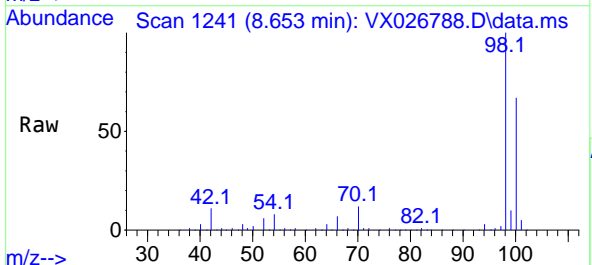


Tgt Ion: 113 Resp: 66998

Ion	Ratio	Lower	Upper
113	100		
111	102.6	81.2	121.8
192	19.7	15.0	22.4

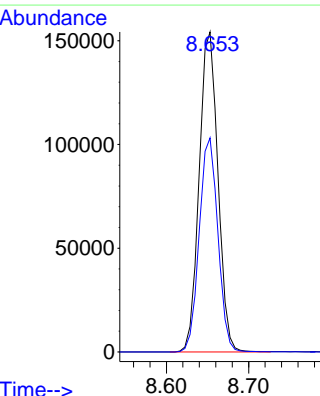
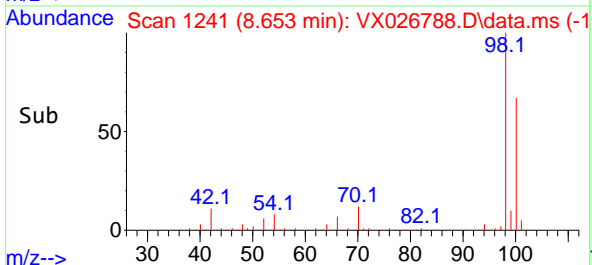


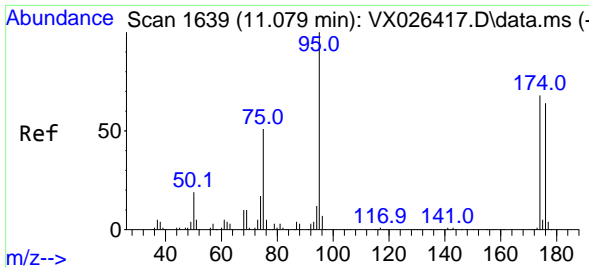
#50
 Toluene-d8
 Concen: 48.799 ug/l
 RT: 8.653 min Scan# 1241
 Delta R.T. 0.000 min
 Lab File: VX026788.D
 Acq: 07 Feb 2022 16:38



Tgt Ion: 98 Resp: 244335

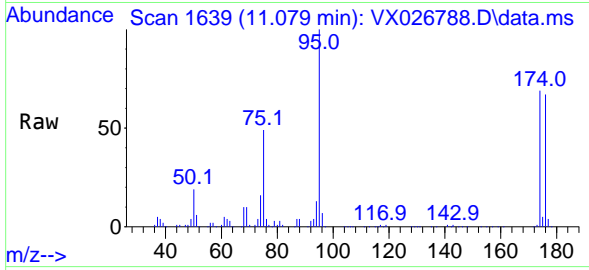
Ion	Ratio	Lower	Upper
98	100		
100	66.6	53.2	79.8



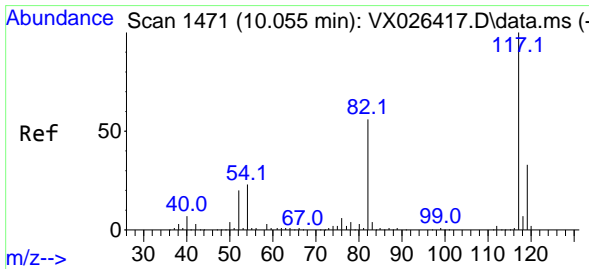
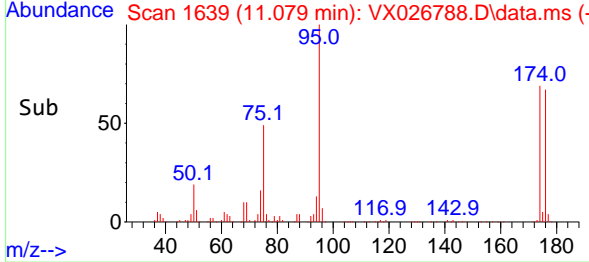
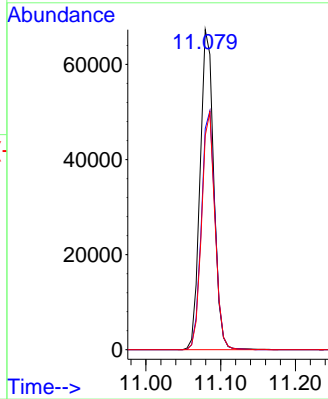


#62
 4-Bromofluorobenzene
 Concen: 47.967 ug/l
 RT: 11.079 min Scan# 11
 Delta R.T. 0.000 min
 Lab File: VX026788.D
 Acq: 07 Feb 2022 16:38

Instrument :
 MSVOA_X
 ClientSampleId :
 MW-19R

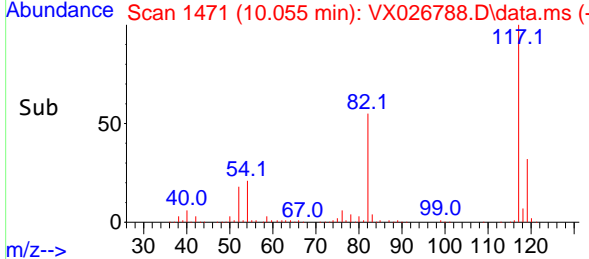
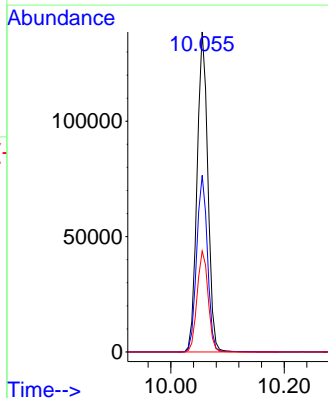
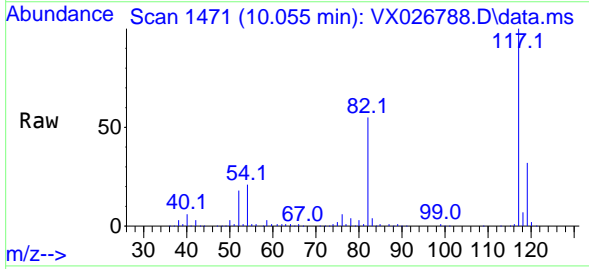


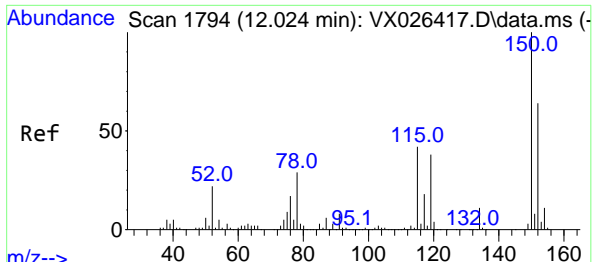
Tgt Ion: 95 Resp: 85317
 Ion Ratio Lower Upper
 95 100
 174 74.6 0.0 148.6
 176 72.6 0.0 141.4



#63
 Chlorobenzene-d5
 Concen: 50.000 ug/l
 RT: 10.055 min Scan# 1471
 Delta R.T. 0.000 min
 Lab File: VX026788.D
 Acq: 07 Feb 2022 16:38

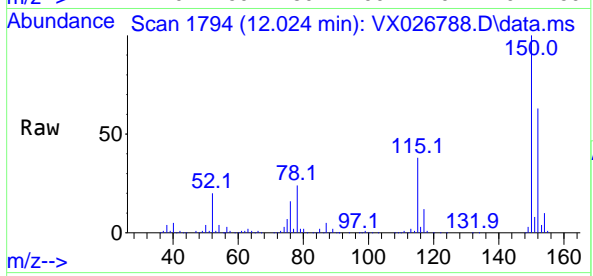
Tgt Ion: 117 Resp: 182873
 Ion Ratio Lower Upper
 117 100
 82 55.2 45.2 67.8
 119 31.5 26.2 39.2





#72
 1,4-Dichlorobenzene-d4
 Concen: 50.000 ug/l
 RT: 12.024 min Scan# 1
 Delta R.T. 0.000 min
 Lab File: VX026788.D
 Acq: 07 Feb 2022 16:38

Instrument :
 MSVOA_X
 ClientSampleId :
 MW-19R



Tgt Ion:152 Resp: 76902

Ion	Ratio	Lower	Upper
152	100		
115	60.3	44.2	132.6
150	157.1	0.0	348.2

