

Data Path : Z:\voasrv\HPCHEM1\MSVOA_X\Data\VX020723\
 Data File : VX034044.D
 Acq On : 06 Feb 2023 21:44
 Operator : JC/MD
 Sample : 01416-04
 Misc : 5.0mL/MSVOA_X/WATER
 ALS Vial : 21 Sample Multiplier: 1

Instrument :
 MSVOA_X
 ClientSampleId :
 TB-2023-2-2

Quant Time: Feb 07 00:59:17 2023
 Quant Method : Z:\voasrv\HPCHEM1\MSVOA_X\Method\82X020423W.M
 Quant Title : SW846 8260
 QLast Update : Fri Feb 03 23:25:45 2023
 Response via : Initial Calibration

Compound	R.T.	QIon	Response	Conc	Units	Dev(Min)

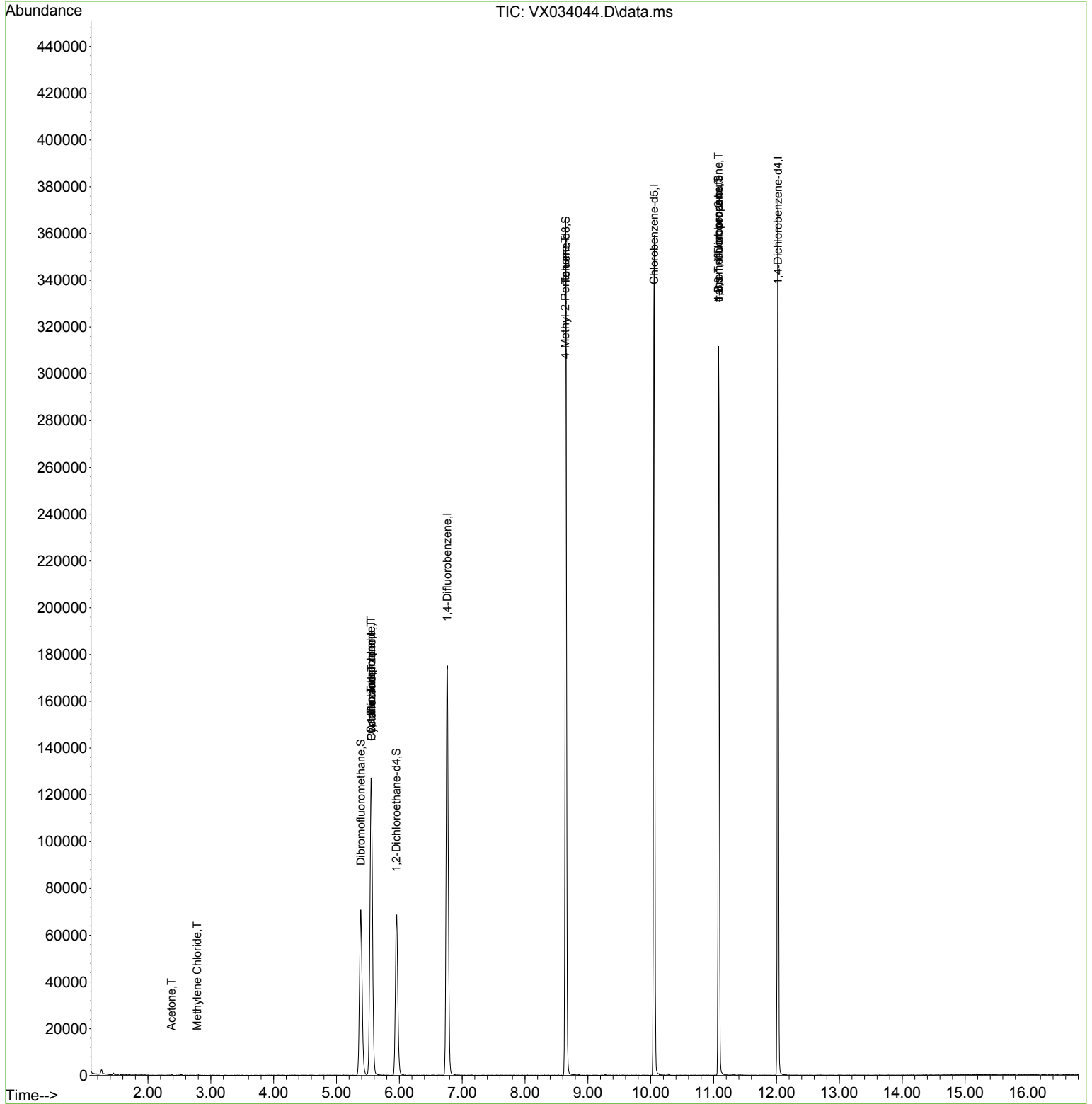
Internal Standards						
1) Pentafluorobenzene	5.556	168	140807	50.000	ug/l	0.00
34) 1,4-Difluorobenzene	6.763	114	195083	50.000	ug/l	0.00
63) Chlorobenzene-d5	10.055	117	178599	50.000	ug/l	0.00
72) 1,4-Dichlorobenzene-d4	12.024	152	88013	50.000	ug/l	0.00
System Monitoring Compounds						
33) 1,2-Dichloroethane-d4	5.952	65	66742	49.167	ug/l	0.00
Spiked Amount	50.000	Range 78 - 117	Recovery	=	98.340%	
35) Dibromofluoromethane	5.385	113	61468	49.508	ug/l	0.00
Spiked Amount	50.000	Range 75 - 124	Recovery	=	99.020%	
50) Toluene-d8	8.647	98	223907	50.054	ug/l	0.00
Spiked Amount	50.000	Range 92 - 112	Recovery	=	100.100%	
62) 4-Bromofluorobenzene	11.079	95	79717	49.896	ug/l	0.00
Spiked Amount	50.000	Range 83 - 123	Recovery	=	99.800%	
Target Compounds						
						Qvalue
16) Acetone	2.373	43	390	0.680	ug/l	90
20) Methylene Chloride	2.782	84	292	0.223	ug/l #	38
31) Cyclohexane	5.556	56	2004	1.014	ug/l #	6
36) 1,1-Dichloropropene	5.550	75	8053	4.731	ug/l #	48
38) Carbon Tetrachloride	5.550	117	11543	6.358	ug/l #	15
51) 4-Methyl-2-Pentanone	8.641	43	883	0.569	ug/l #	1
76) 1,2,3-Trichloropropane	11.079	75	37383	24.736	ug/l #	34
81) trans-1,4-Dichloro-2-b...	11.079	75	37383	76.179	ug/l #	8

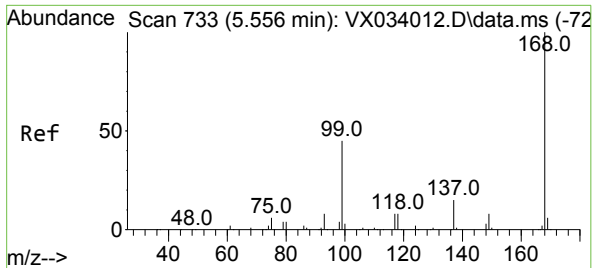
(#) = qualifier out of range (m) = manual integration (+) = signals summed

Data Path : Z:\voasrv\HPCHEM1\MSVOA_X\Data\VX020723\
Data File : VX034044.D
Acq On : 06 Feb 2023 21:44
Operator : JC/MD
Sample : 01416-04
Misc : 5.0mL/MSVOA_X/WATER
ALS Vial : 21 Sample Multiplier: 1

Instrument :
MSVOA_X
ClientSampleId :
TB-2023-2-2

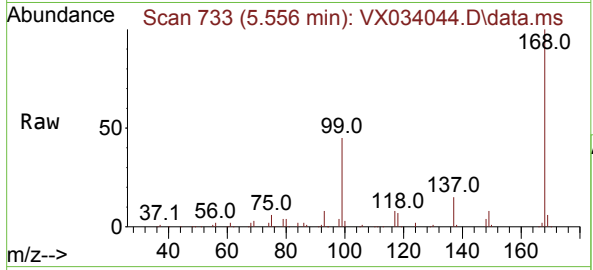
Quant Time: Feb 07 00:59:17 2023
Quant Method : Z:\voasrv\HPCHEM1\MSVOA_X\Method\82X020423W.M
Quant Title : SW846 8260
QLast Update : Fri Feb 03 23:25:45 2023
Response via : Initial Calibration



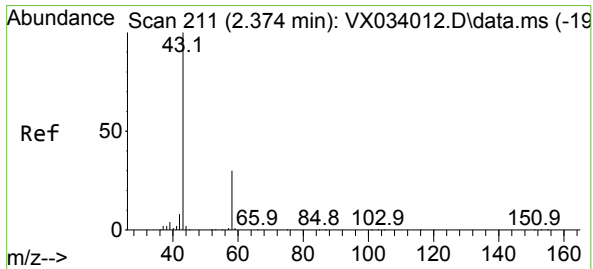
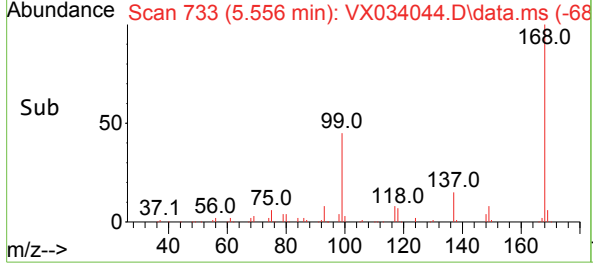
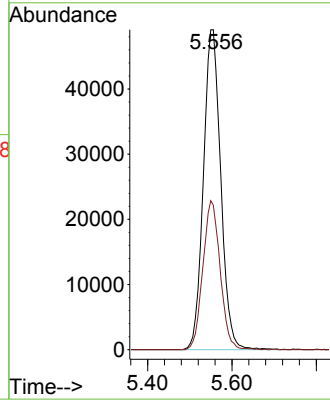


#1
 Pentafluorobenzene
 Concen: 50.000 ug/l
 RT: 5.556 min Scan# 71
 Delta R.T. -0.000 min
 Lab File: VX034044.D
 Acq: 06 Feb 2023 21:44

Instrument : MSVOA_X
 ClientSampleId : TB-2023-2-2

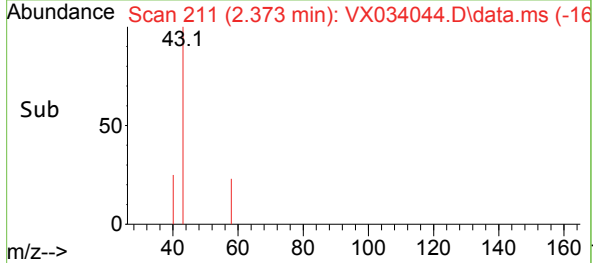
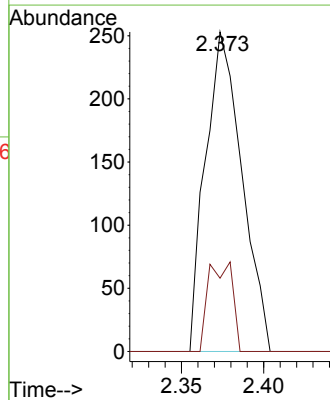
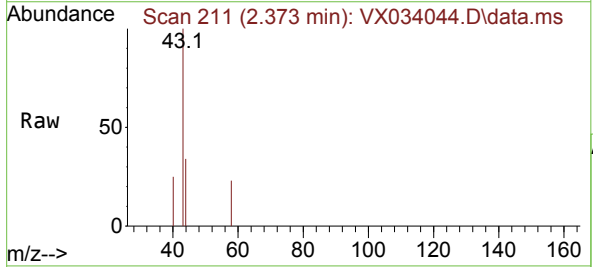


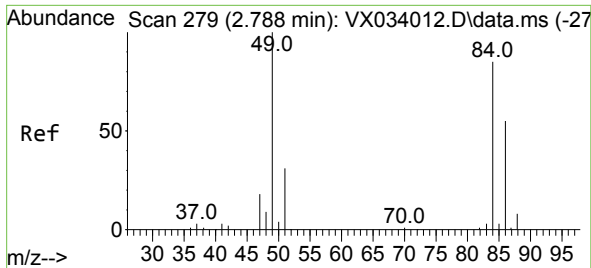
Tgt Ion:168 Resp: 140807
 Ion Ratio Lower Upper
 168 100
 99 45.1 39.6 59.4



#16
 Acetone
 Concen: 0.680 ug/l
 RT: 2.373 min Scan# 211
 Delta R.T. -0.000 min
 Lab File: VX034044.D
 Acq: 06 Feb 2023 21:44

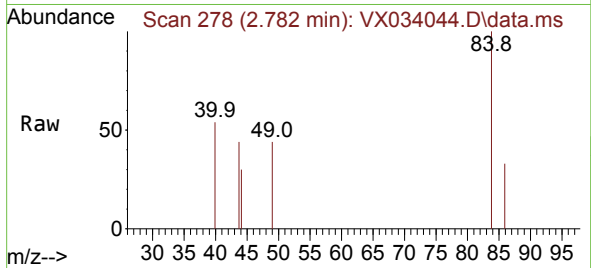
Tgt Ion: 43 Resp: 390
 Ion Ratio Lower Upper
 43 100
 58 22.9 22.6 33.8





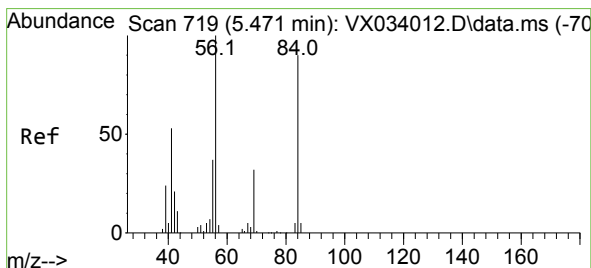
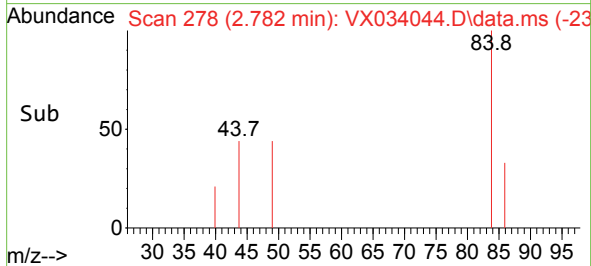
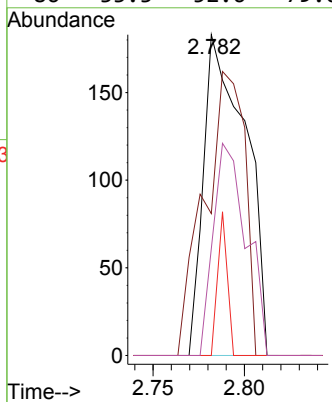
#20
 Methylene Chloride
 Concen: 0.223 ug/l
 RT: 2.782 min Scan# 21
 Delta R.T. -0.006 min
 Lab File: VX034044.D
 Acq: 06 Feb 2023 21:44

Instrument : MSVOA_X
 ClientSampleId : TB-2023-2-2



Tgt Ion: 84 Resp: 292

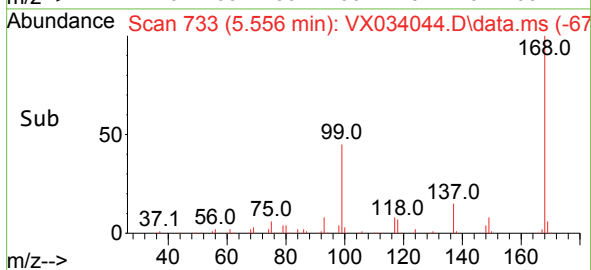
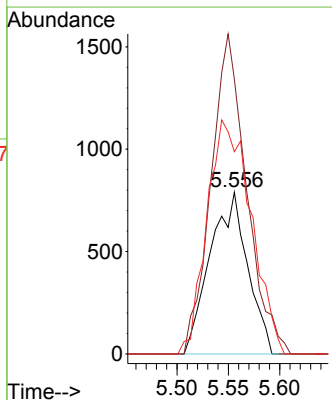
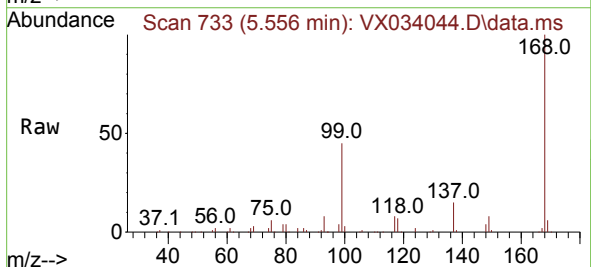
Ion	Ratio	Lower	Upper
84	100		
49	44.3	101.1	151.7#
51	0.0	31.0	46.6#
86	33.3	52.6	79.0#

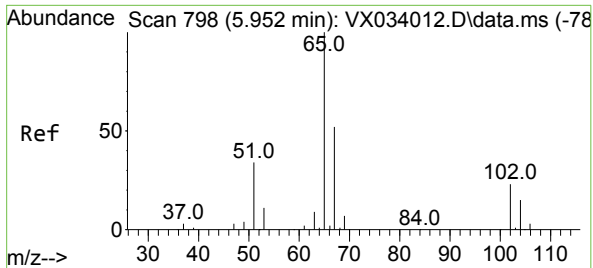


#31
 Cyclohexane
 Concen: 1.014 ug/l
 RT: 5.556 min Scan# 733
 Delta R.T. 0.085 min
 Lab File: VX034044.D
 Acq: 06 Feb 2023 21:44

Tgt Ion: 56 Resp: 2004

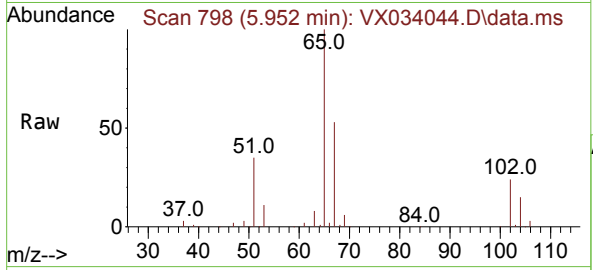
Ion	Ratio	Lower	Upper
56	100		
69	170.0	24.6	37.0#
84	125.1	71.0	106.6#



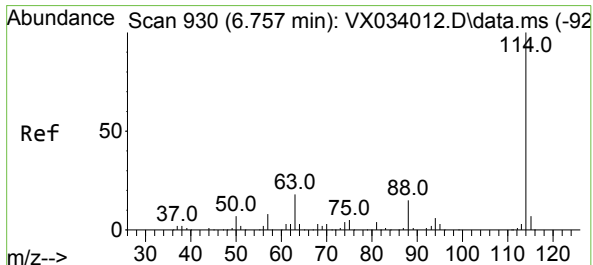
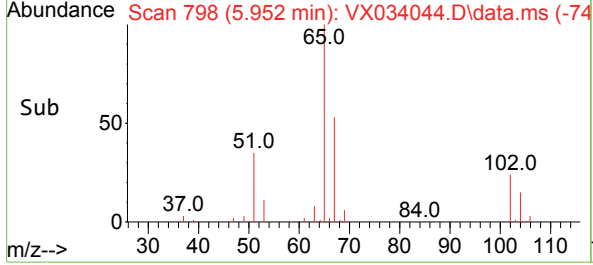
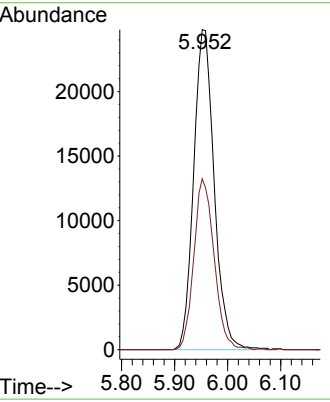


#33
 1,2-Dichloroethane-d4
 Concen: 49.167 ug/l
 RT: 5.952 min Scan# 798
 Delta R.T. -0.000 min
 Lab File: VX034044.D
 Acq: 06 Feb 2023 21:44

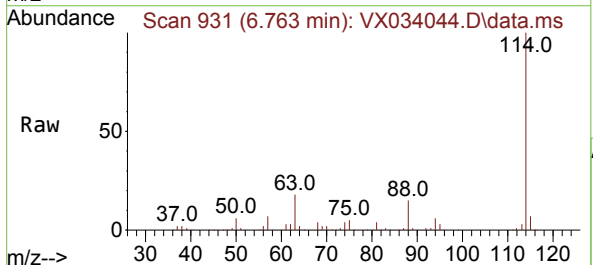
Instrument : MSVOA_X
 ClientSampleId : TB-2023-2-2



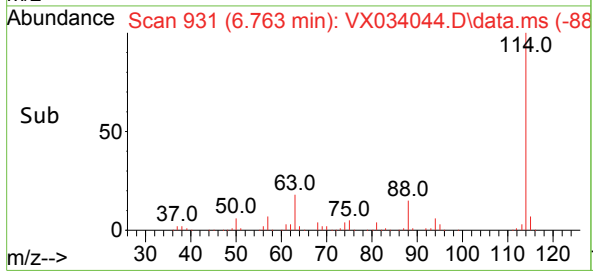
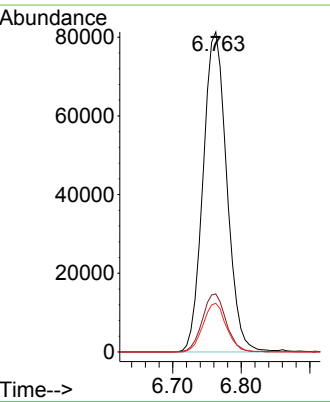
Tgt Ion: 65 Resp: 66742
 Ion Ratio Lower Upper
 65 100
 67 52.8 0.0 104.8

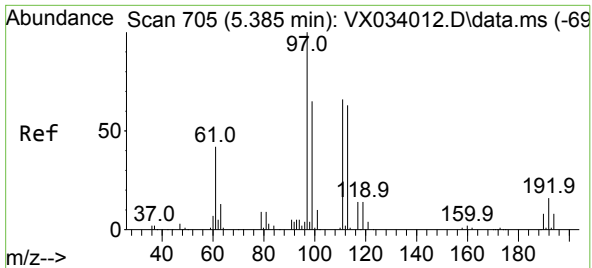


#34
 1,4-Difluorobenzene
 Concen: 50.000 ug/l
 RT: 6.763 min Scan# 931
 Delta R.T. 0.006 min
 Lab File: VX034044.D
 Acq: 06 Feb 2023 21:44



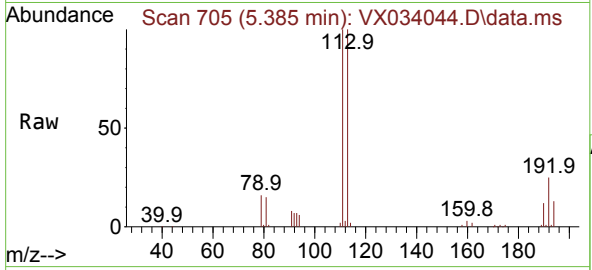
Tgt Ion: 114 Resp: 195083
 Ion Ratio Lower Upper
 114 100
 63 18.2 0.0 37.4
 88 15.2 0.0 30.6



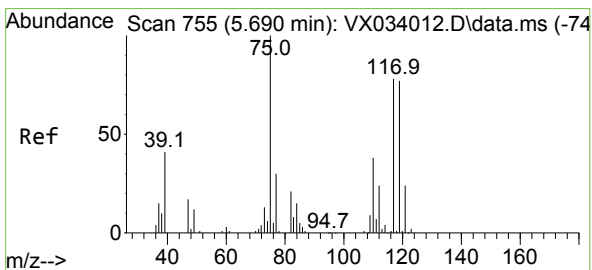
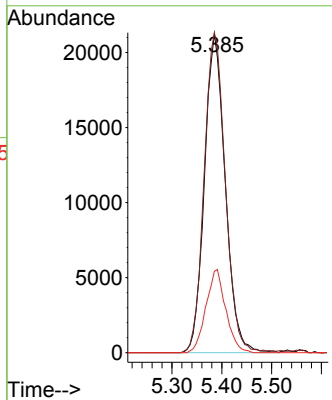
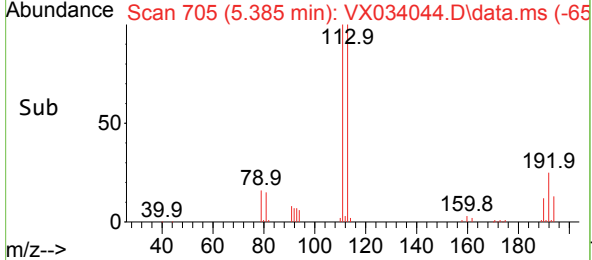


#35
 Dibromofluoromethane
 Concen: 49.508 ug/l
 RT: 5.385 min Scan# 705
 Delta R.T. -0.000 min
 Lab File: VX034044.D
 Acq: 06 Feb 2023 21:44

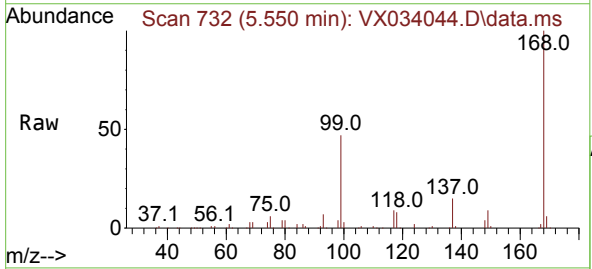
Instrument : MSVOA_X
 ClientSampleId : TB-2023-2-2



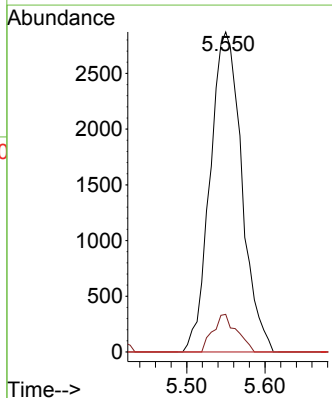
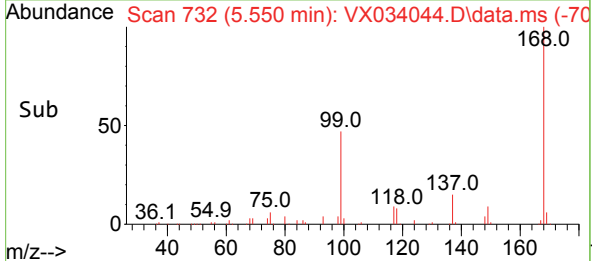
Tgt Ion: 113 Resp: 61468
 Ion Ratio Lower Upper
 113 100
 111 102.4 83.0 124.6
 192 24.9 19.0 28.4

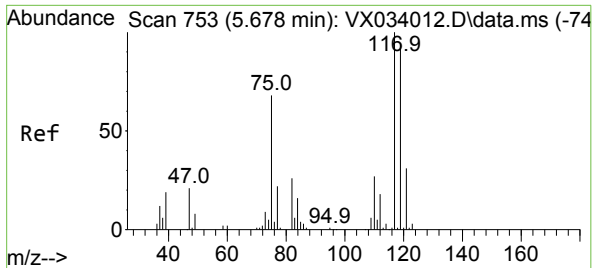


#36
 1,1-Dichloropropene
 Concen: 4.731 ug/l
 RT: 5.550 min Scan# 732
 Delta R.T. -0.140 min
 Lab File: VX034044.D
 Acq: 06 Feb 2023 21:44



Tgt Ion: 75 Resp: 8053
 Ion Ratio Lower Upper
 75 100
 110 8.8 18.8 56.4#
 77 0.0 25.1 37.7#

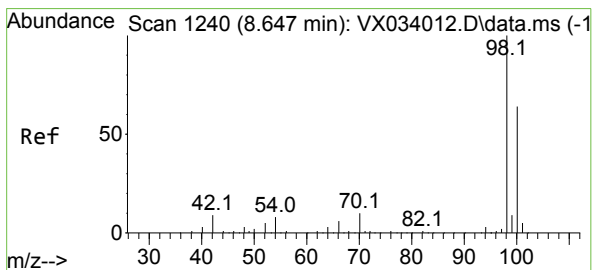
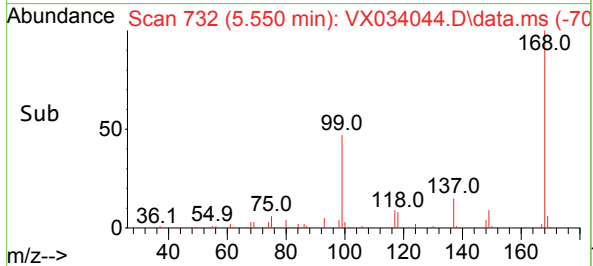
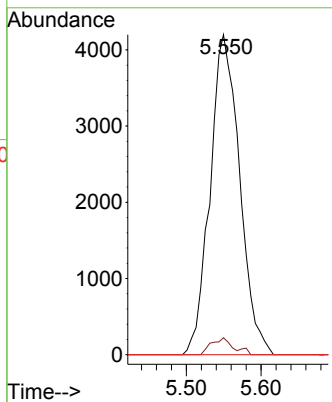
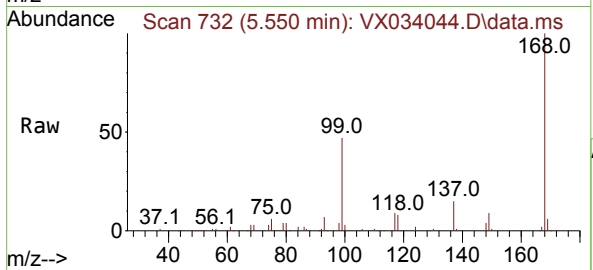




#38
 Carbon Tetrachloride
 Concen: 6.358 ug/l
 RT: 5.550 min Scan# 71
 Delta R.T. -0.128 min
 Lab File: VX034044.D
 Acq: 06 Feb 2023 21:44

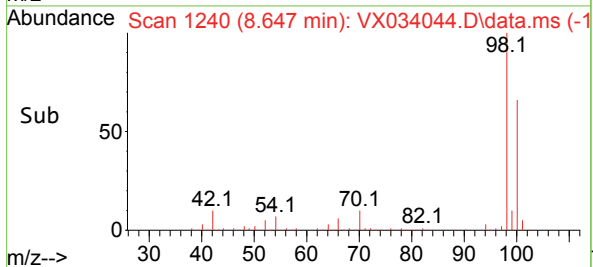
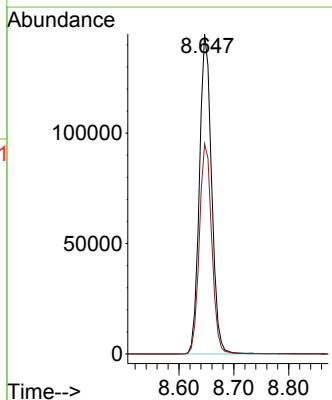
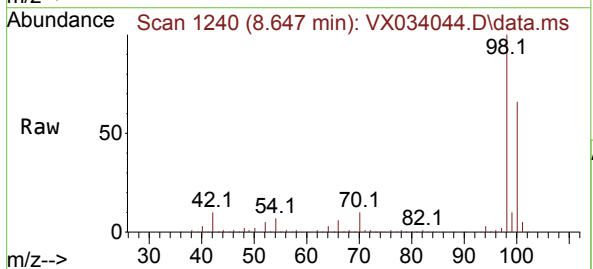
Instrument : MSVOA_X
 ClientSampleId : TB-2023-2-2

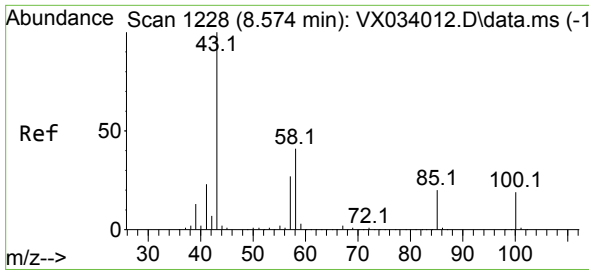
Tgt Ion	Resp	Lower	Upper
117	11543		
119	5.3	78.0	117.0#
121	0.0	24.4	36.6#



#50
 Toluene-d8
 Concen: 50.054 ug/l
 RT: 8.647 min Scan# 1240
 Delta R.T. -0.000 min
 Lab File: VX034044.D
 Acq: 06 Feb 2023 21:44

Tgt Ion	Resp	Lower	Upper
98	223907		
100	66.8	53.6	80.4

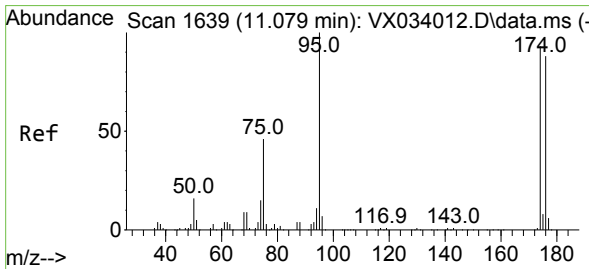
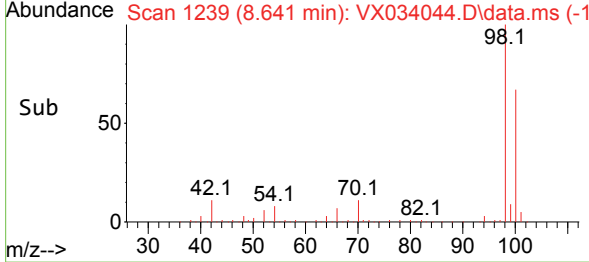
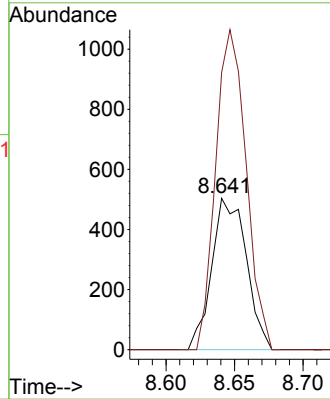
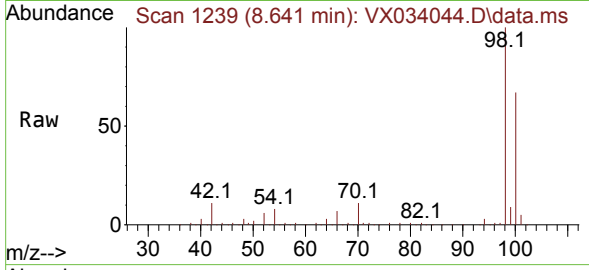




#51
 4-Methyl-2-Pentanone
 Concen: 0.569 ug/l
 RT: 8.641 min Scan# 11
 Delta R.T. 0.067 min
 Lab File: VX034044.D
 Acq: 06 Feb 2023 21:44

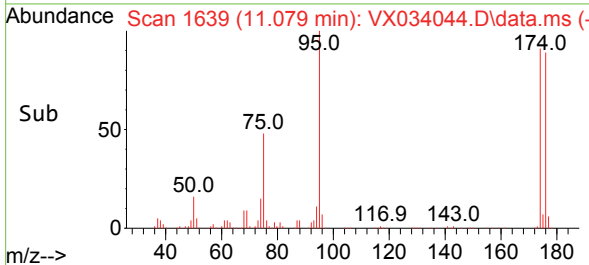
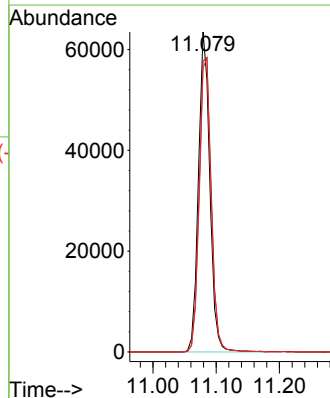
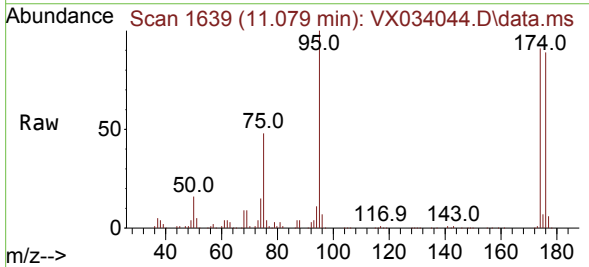
Instrument : MSVOA_X
 ClientSampleId : TB-2023-2-2

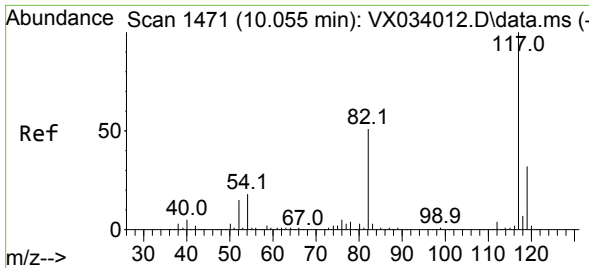
Tgt Ion: 43 Resp: 883
 Ion Ratio Lower Upper
 43 100
 58 186.5 31.2 46.8#



#62
 4-Bromofluorobenzene
 Concen: 49.896 ug/l
 RT: 11.079 min Scan# 1639
 Delta R.T. -0.000 min
 Lab File: VX034044.D
 Acq: 06 Feb 2023 21:44

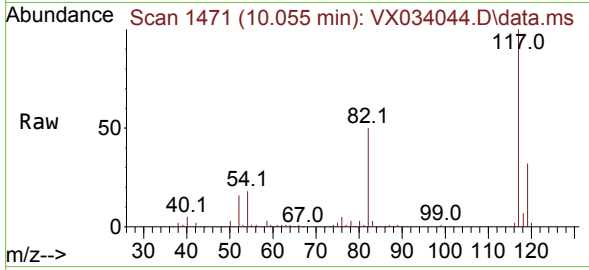
Tgt Ion: 95 Resp: 79717
 Ion Ratio Lower Upper
 95 100
 174 98.3 0.0 184.4
 176 95.4 0.0 178.8



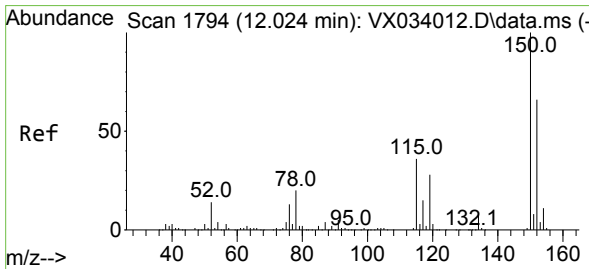
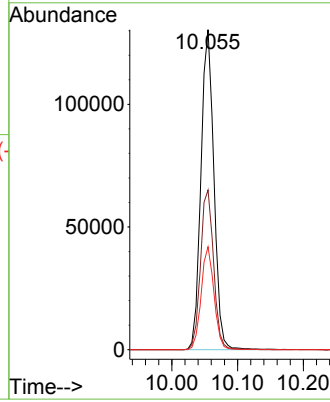
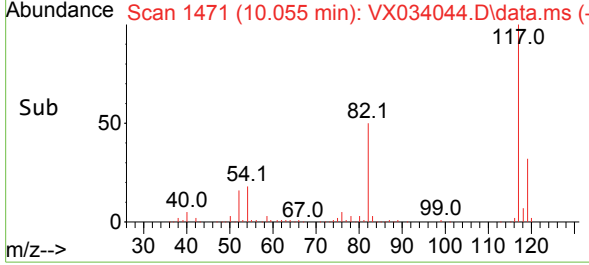


#63
 Chlorobenzene-d5
 Concen: 50.000 ug/l
 RT: 10.055 min Scan# 1471
 Delta R.T. -0.000 min
 Lab File: VX034044.D
 Acq: 06 Feb 2023 21:44

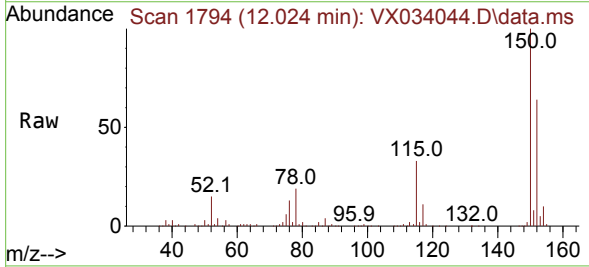
Instrument : MSVOA_X
 ClientSampleId : TB-2023-2-2



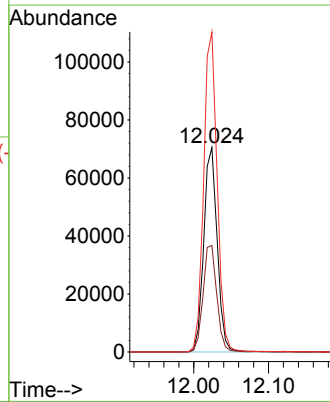
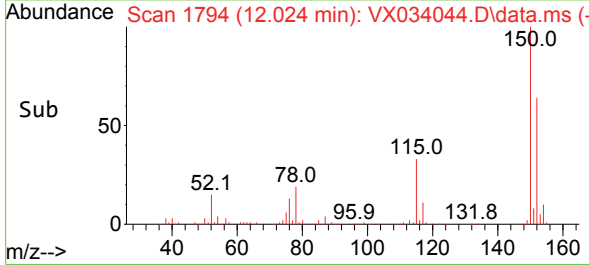
Tgt Ion:117 Resp: 178599
 Ion Ratio Lower Upper
 117 100
 82 49.9 40.6 60.8
 119 32.2 25.6 38.4

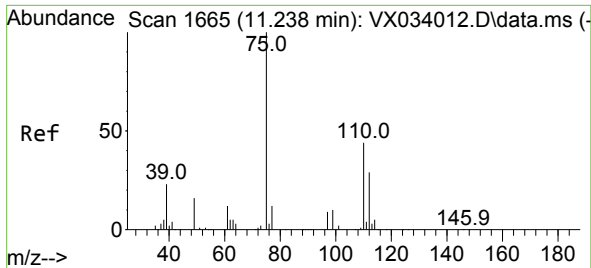


#72
 1,4-Dichlorobenzene-d4
 Concen: 50.000 ug/l
 RT: 12.024 min Scan# 1794
 Delta R.T. -0.000 min
 Lab File: VX034044.D
 Acq: 06 Feb 2023 21:44



Tgt Ion:152 Resp: 88013
 Ion Ratio Lower Upper
 152 100
 115 53.2 38.7 116.1
 150 157.1 0.0 348.2

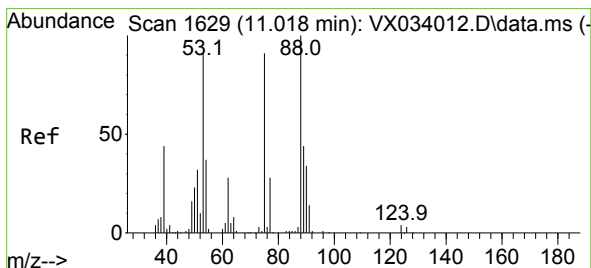
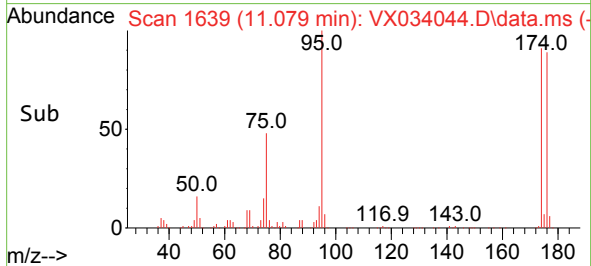
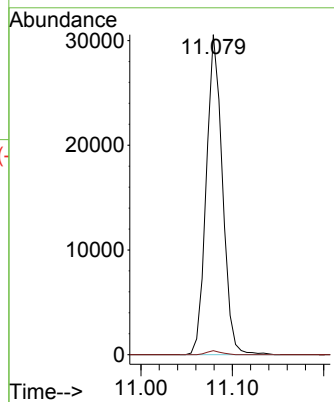
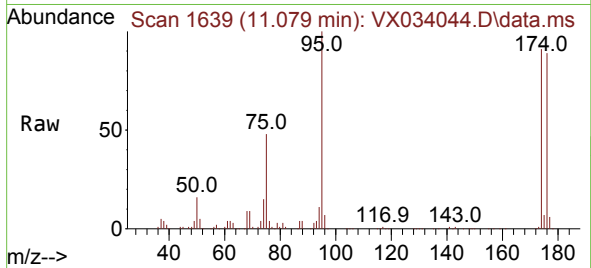




#76
 1,2,3-Trichloropropane
 Concen: 24.736 ug/l
 RT: 11.079 min Scan# 1639
 Delta R.T. -0.159 min
 Lab File: VX034044.D
 Acq: 06 Feb 2023 21:44

Instrument : MSVOA_X
 ClientSampleId : TB-2023-2-2

Tgt Ion: 75 Resp: 37383
 Ion Ratio Lower Upper
 75 100
 77 1.1 21.8 65.4#



#81
 trans-1,4-Dichloro-2-butene
 Concen: 76.179 ug/l
 RT: 11.079 min Scan# 1639
 Delta R.T. 0.061 min
 Lab File: VX034044.D
 Acq: 06 Feb 2023 21:44

Tgt Ion: 75 Resp: 37383
 Ion Ratio Lower Upper
 75 100
 53 0.0 83.0 124.6#
 89 0.1 37.7 56.5#

