

Data Path : Z:\voasrv\HPCHEM1\MSVOA\_X\Data\VX020723\  
 Data File : VX034048.D  
 Acq On : 06 Feb 2023 23:16  
 Operator : JC/MD  
 Sample : 01455-04  
 Misc : 5.0mL/MSVOA\_X/WATER  
 ALS Vial : 25 Sample Multiplier: 1

Instrument :  
 MSVOA\_X  
 ClientSampleId :  
 STORAGE-BLANK-SAMPLE-MANAG

Quant Time: Feb 07 01:00:58 2023  
 Quant Method : Z:\voasrv\HPCHEM1\MSVOA\_X\Method\82X020423W.M  
 Quant Title : SW846 8260  
 QLast Update : Fri Feb 03 23:25:45 2023  
 Response via : Initial Calibration

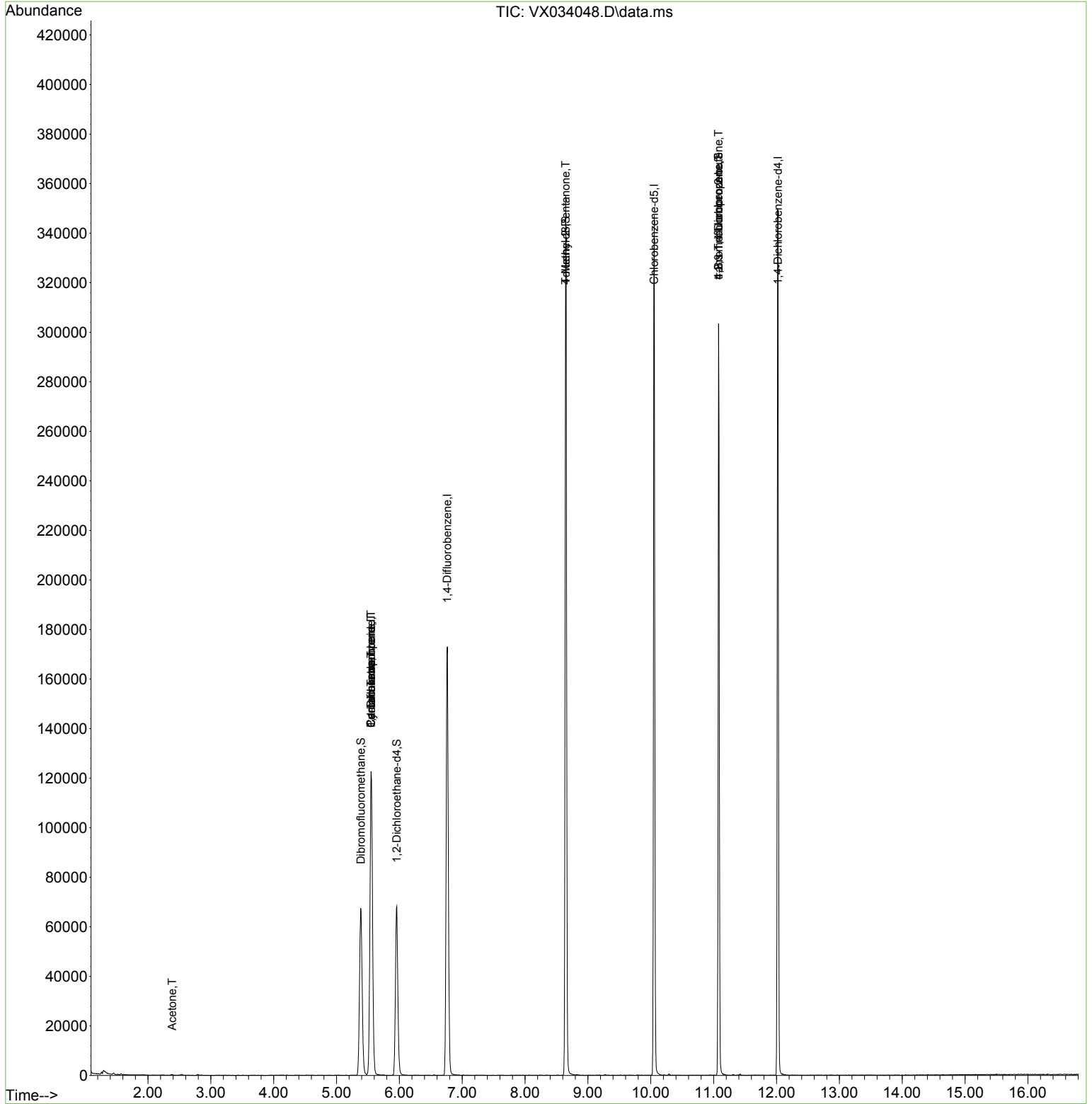
Compound	R.T.	QIon	Response	Conc	Units	Dev(Min)
-----						
Internal Standards						
1) Pentafluorobenzene	5.550	168	134779	50.000	ug/l	0.00
34) 1,4-Difluorobenzene	6.763	114	190384	50.000	ug/l	0.00
63) Chlorobenzene-d5	10.055	117	171687	50.000	ug/l	0.00
72) 1,4-Dichlorobenzene-d4	12.024	152	85066	50.000	ug/l	0.00
System Monitoring Compounds						
33) 1,2-Dichloroethane-d4	5.958	65	64324	49.505	ug/l	0.00
Spiked Amount	50.000	Range	78 - 117	Recovery	=	99.020%
35) Dibromofluoromethane	5.385	113	59484	49.093	ug/l	0.00
Spiked Amount	50.000	Range	75 - 124	Recovery	=	98.180%
50) Toluene-d8	8.647	98	215842	49.442	ug/l	0.00
Spiked Amount	50.000	Range	92 - 112	Recovery	=	98.880%
62) 4-Bromofluorobenzene	11.079	95	77369	49.622	ug/l	0.00
Spiked Amount	50.000	Range	83 - 123	Recovery	=	99.240%
Target Compounds						
					Qvalue	
16) Acetone	2.386	43	353	0.643	ug/l #	47
31) Cyclohexane	5.550	56	1949	1.030	ug/l #	1
36) 1,1-Dichloropropene	5.550	75	7573	4.559	ug/l #	50
38) Carbon Tetrachloride	5.550	117	11326	6.392	ug/l #	15
51) 4-Methyl-2-Pentanone	8.647	43	834	0.551	ug/l #	1
76) 1,2,3-Trichloropropane	11.079	75	35536	24.329	ug/l #	34
81) trans-1,4-Dichloro-2-b...	11.079	75	35536	74.924	ug/l #	8

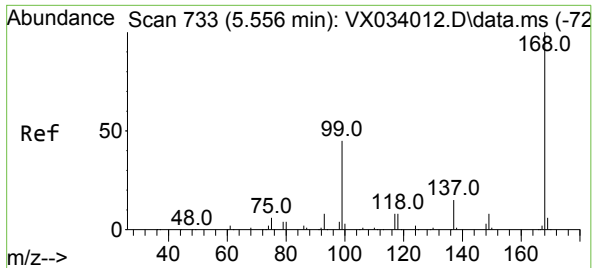
(#) = qualifier out of range (m) = manual integration (+) = signals summed

Data Path : Z:\voasrv\HPCHEM1\MSVOA\_X\Data\VX020723\  
 Data File : VX034048.D  
 Acq On : 06 Feb 2023 23:16  
 Operator : JC/MD  
 Sample : 01455-04  
 Misc : 5.0mL/MSVOA\_X/WATER  
 ALS Vial : 25 Sample Multiplier: 1

**Instrument :**  
 MSVOA\_X  
**ClientSampleId :**  
 STORAGE-BLANK-SAMPLE-MANAG

Quant Time: Feb 07 01:00:58 2023  
 Quant Method : Z:\voasrv\HPCHEM1\MSVOA\_X\Method\82X020423W.M  
 Quant Title : SW846 8260  
 QLast Update : Fri Feb 03 23:25:45 2023  
 Response via : Initial Calibration

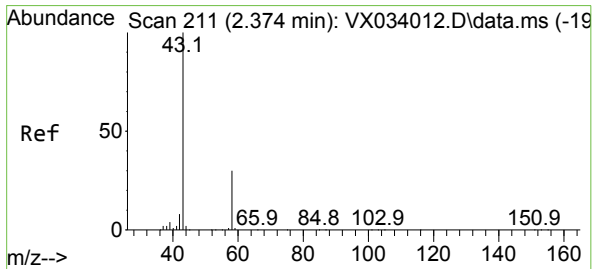
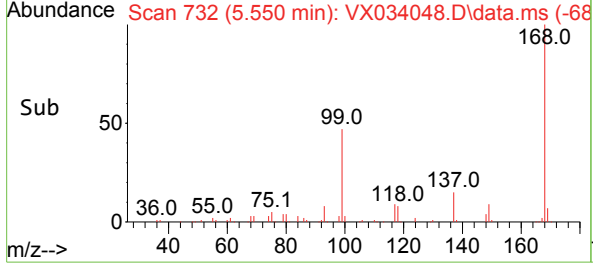
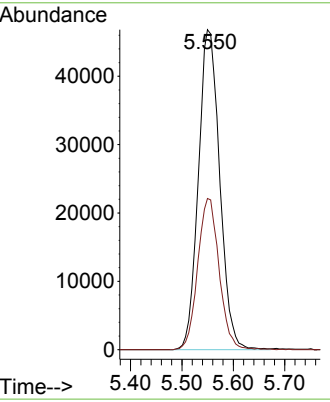
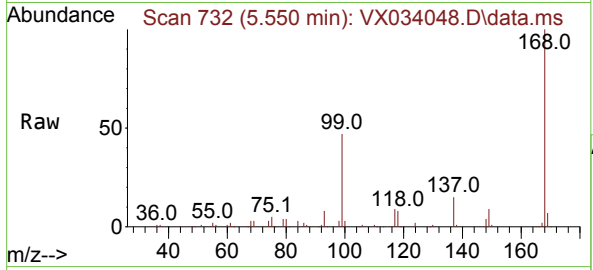




#1  
 Pentafluorobenzene  
 Concen: 50.000 ug/l  
 RT: 5.550 min Scan# 71  
 Delta R.T. -0.006 min  
 Lab File: VX034048.D  
 Acq: 06 Feb 2023 23:16

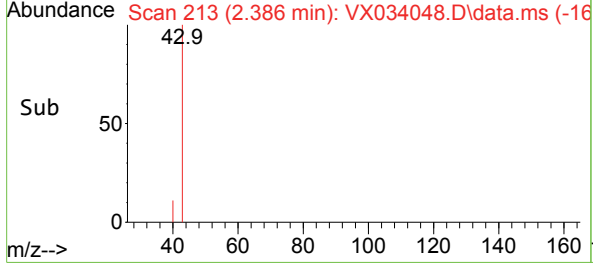
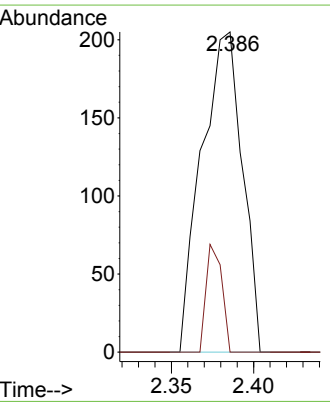
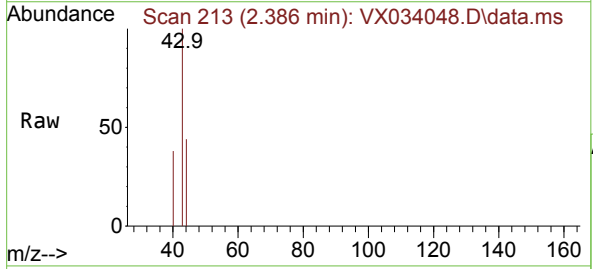
Instrument : MSVOA\_X  
 ClientSampleId : STORAGE-BLANK-SAMPLE-MANAG

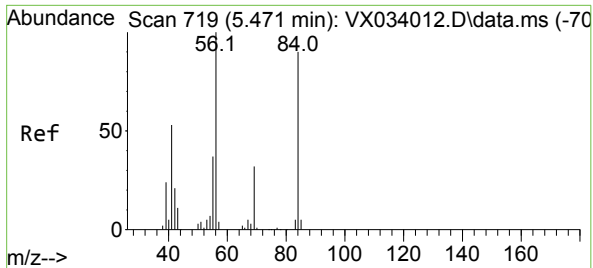
Tgt Ion:168 Resp: 134779  
 Ion Ratio Lower Upper  
 168 100  
 99 47.3 39.6 59.4



#16  
 Acetone  
 Concen: 0.643 ug/l  
 RT: 2.386 min Scan# 213  
 Delta R.T. 0.012 min  
 Lab File: VX034048.D  
 Acq: 06 Feb 2023 23:16

Tgt Ion: 43 Resp: 353  
 Ion Ratio Lower Upper  
 43 100  
 58 0.0 22.6 33.8#

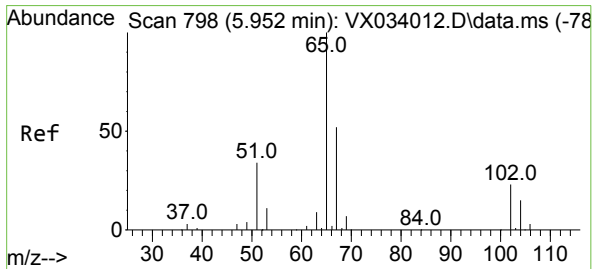
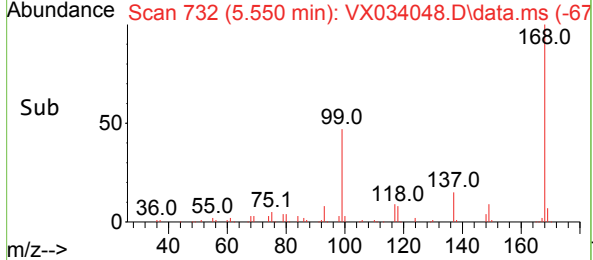
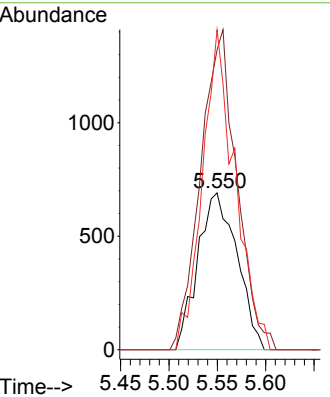
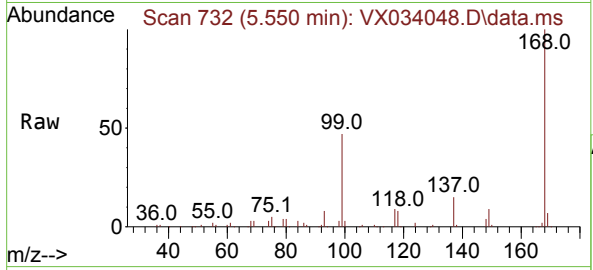




#31  
 Cyclohexane  
 Concen: 1.030 ug/l  
 RT: 5.550 min Scan# 719  
 Delta R.T. 0.079 min  
 Lab File: VX034048.D  
 Acq: 06 Feb 2023 23:16

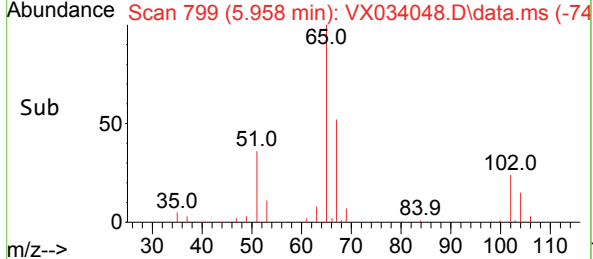
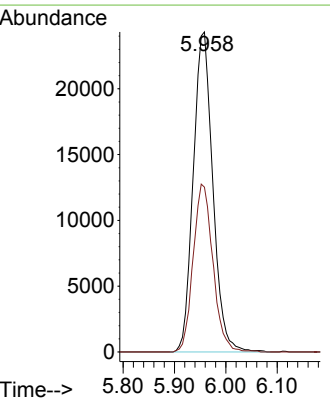
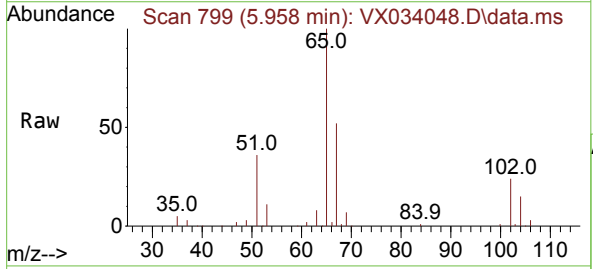
Instrument : MSVOA\_X  
 ClientSampleId : STORAGE-BLANK-SAMPLE-MANAG

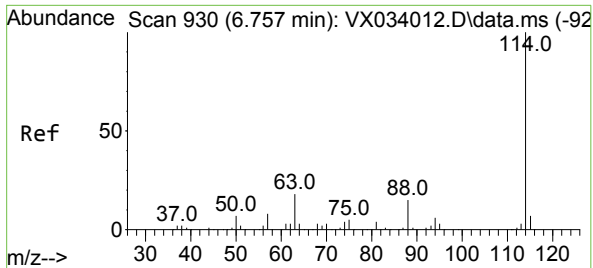
Tgt Ion	Resp	Ion Ratio	Lower	Upper
56	1949	100		
69	191.2	24.6	24.6	37.0#
84	203.9	71.0	71.0	106.6#



#33  
 1,2-Dichloroethane-d4  
 Concen: 49.505 ug/l  
 RT: 5.958 min Scan# 799  
 Delta R.T. 0.006 min  
 Lab File: VX034048.D  
 Acq: 06 Feb 2023 23:16

Tgt Ion	Resp	Ion Ratio	Lower	Upper
65	64324	100		
67	53.1	0.0	0.0	104.8



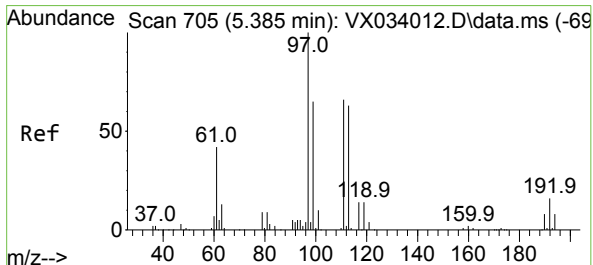
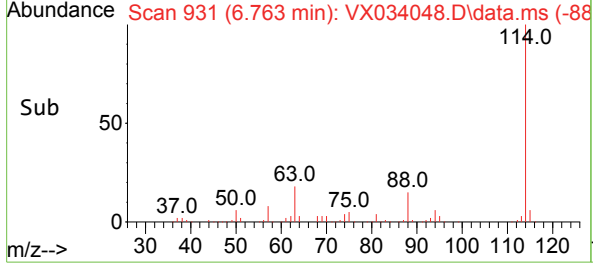
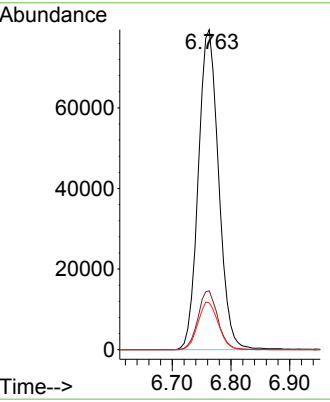
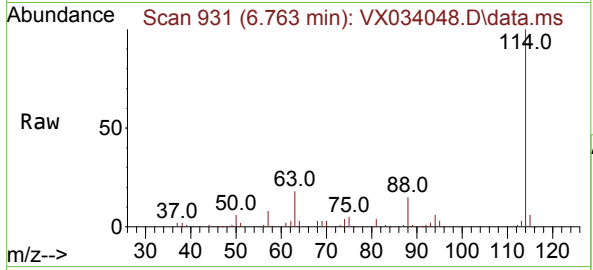


#34  
 1,4-Difluorobenzene  
 Concen: 50.000 ug/l  
 RT: 6.763 min Scan# 911  
 Delta R.T. 0.006 min  
 Lab File: VX034048.D  
 Acq: 06 Feb 2023 23:16

Instrument : MSVOA\_X  
 ClientSampleId : STORAGE-BLANK-SAMPLE-MANAG

Tgt Ion:114 Resp: 190384

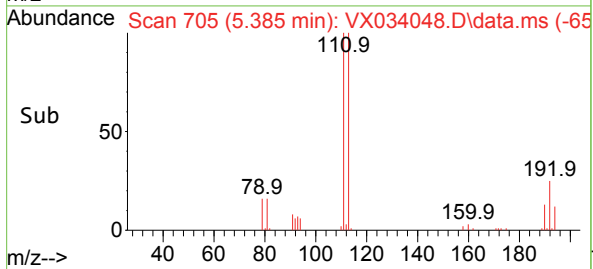
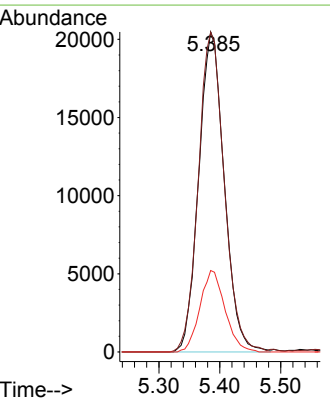
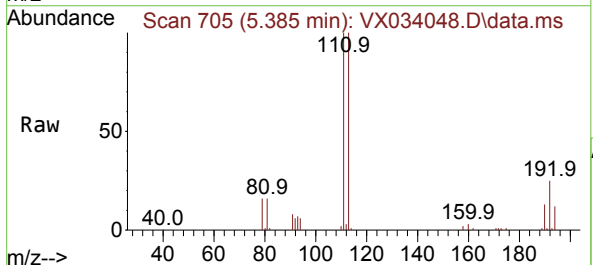
Ion	Ratio	Lower	Upper
114	100		
63	18.4	0.0	37.4
88	14.6	0.0	30.6

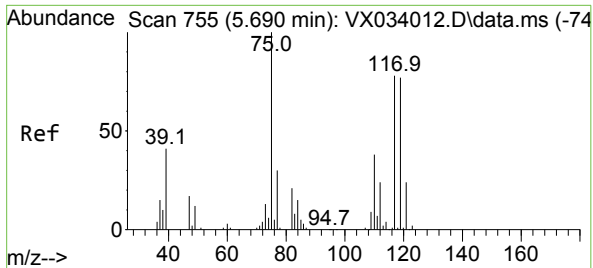


#35  
 Dibromofluoromethane  
 Concen: 49.093 ug/l  
 RT: 5.385 min Scan# 705  
 Delta R.T. -0.000 min  
 Lab File: VX034048.D  
 Acq: 06 Feb 2023 23:16

Tgt Ion:113 Resp: 59484

Ion	Ratio	Lower	Upper
113	100		
111	101.4	83.0	124.6
192	25.0	19.0	28.4

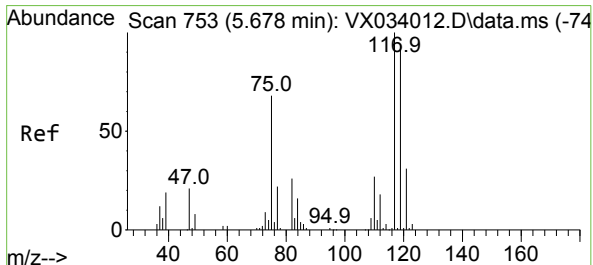
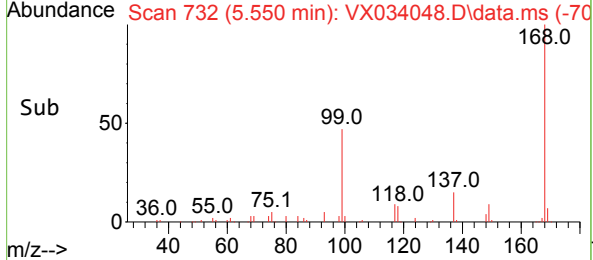
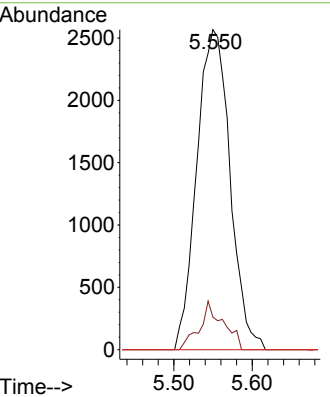
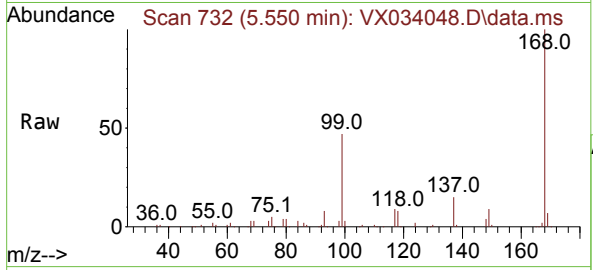




#36  
 1,1-Dichloropropene  
 Concen: 4.559 ug/l  
 RT: 5.550 min Scan# 711  
 Delta R.T. -0.140 min  
 Lab File: VX034048.D  
 Acq: 06 Feb 2023 23:16

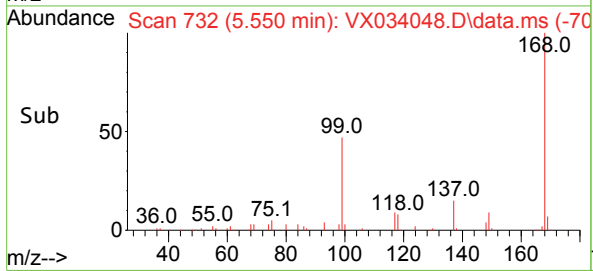
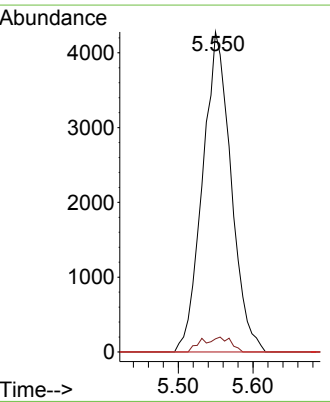
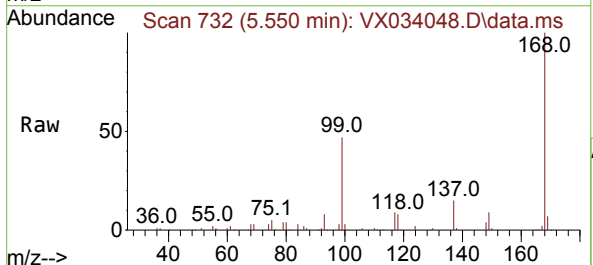
Instrument : MSVOA\_X  
 ClientSampleId : STORAGE-BLANK-SAMPLE-MANAG

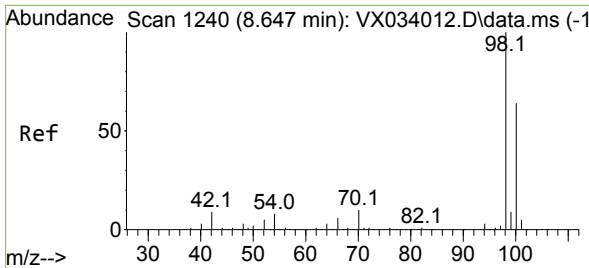
Tgt Ion	Resp	Lower	Upper
75	7573		
75	100		
110	10.8	18.8	56.4#
77	0.0	25.1	37.7#



#38  
 Carbon Tetrachloride  
 Concen: 6.392 ug/l  
 RT: 5.550 min Scan# 732  
 Delta R.T. -0.128 min  
 Lab File: VX034048.D  
 Acq: 06 Feb 2023 23:16

Tgt Ion	Resp	Lower	Upper
117	11326		
117	100		
119	4.1	78.0	117.0#
121	0.0	24.4	36.6#

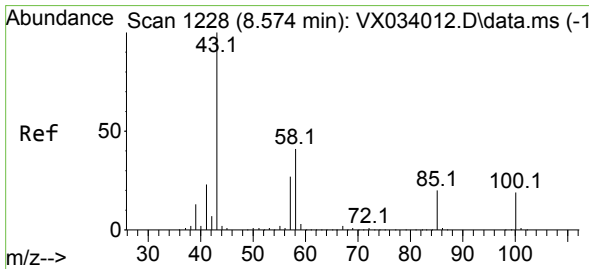
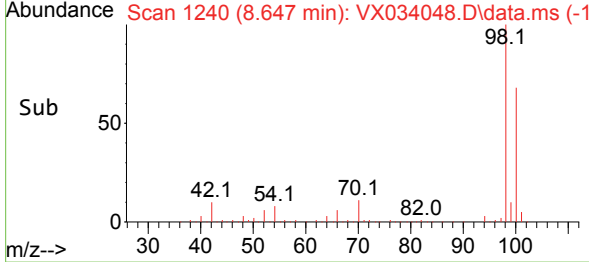
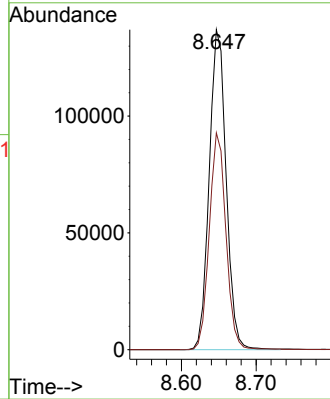
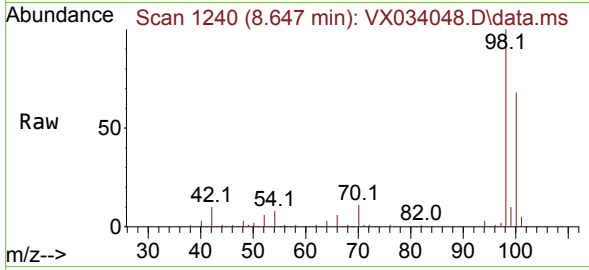




#50  
 Toluene-d8  
 Concen: 49.442 ug/l  
 RT: 8.647 min Scan# 1240  
 Delta R.T. -0.000 min  
 Lab File: VX034048.D  
 Acq: 06 Feb 2023 23:16

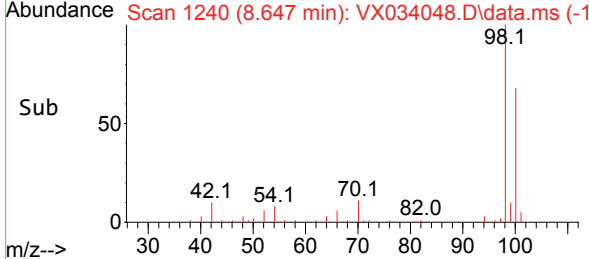
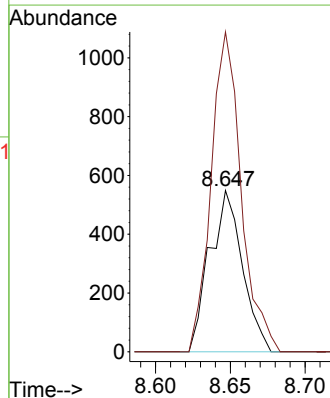
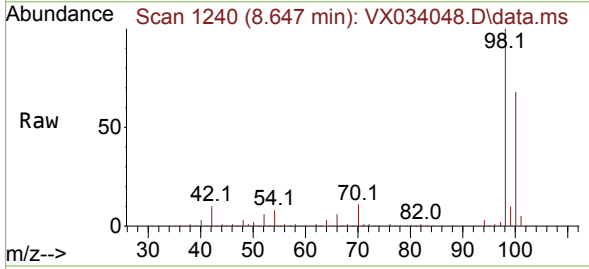
Instrument : MSVOA\_X  
 ClientSampleId : STORAGE-BLANK-SAMPLE-MANAG

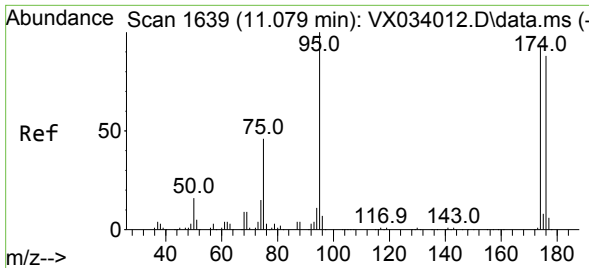
Tgt Ion: 98 Resp: 215842  
 Ion Ratio Lower Upper  
 98 100  
 100 66.8 53.6 80.4



#51  
 4-Methyl-2-Pentanone  
 Concen: 0.551 ug/l  
 RT: 8.647 min Scan# 1240  
 Delta R.T. 0.073 min  
 Lab File: VX034048.D  
 Acq: 06 Feb 2023 23:16

Tgt Ion: 43 Resp: 834  
 Ion Ratio Lower Upper  
 43 100  
 58 182.5 31.2 46.8#

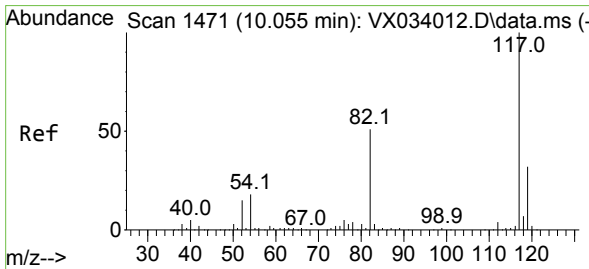
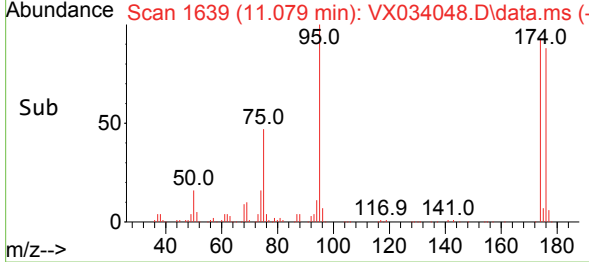
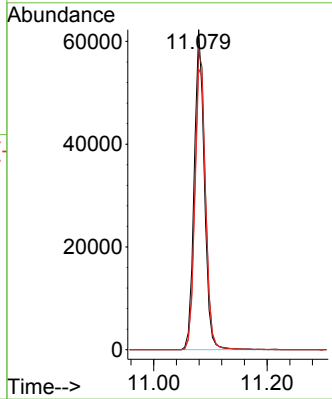
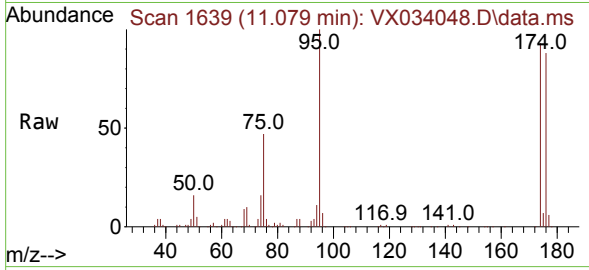




#62  
 4-Bromofluorobenzene  
 Concen: 49.622 ug/l  
 RT: 11.079 min Scan# 1639  
 Delta R.T. -0.000 min  
 Lab File: VX034048.D  
 Acq: 06 Feb 2023 23:16

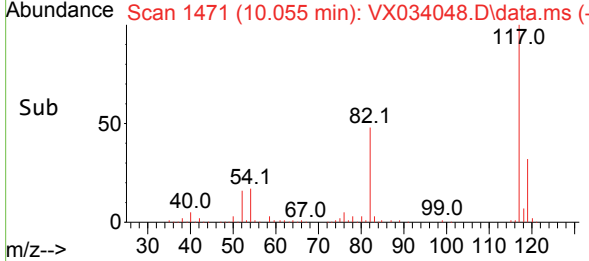
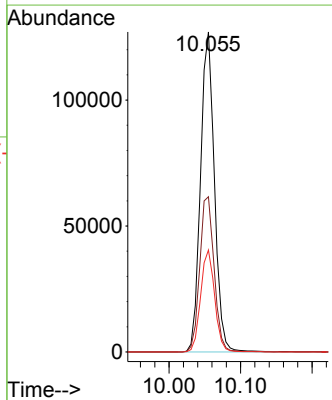
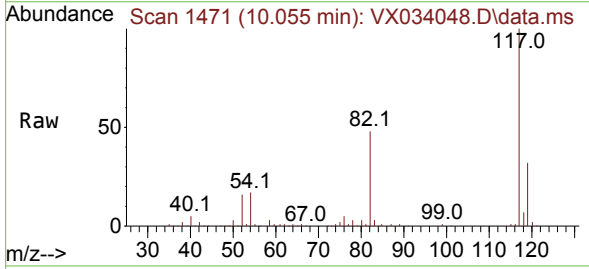
Instrument : MSVOA\_X  
 ClientSampleId : STORAGE-BLANK-SAMPLE-MANAG

Tgt Ion	Resp	Ion Ratio	Lower	Upper
95	77369	100		
174		98.4	0.0	184.4
176		93.3	0.0	178.8

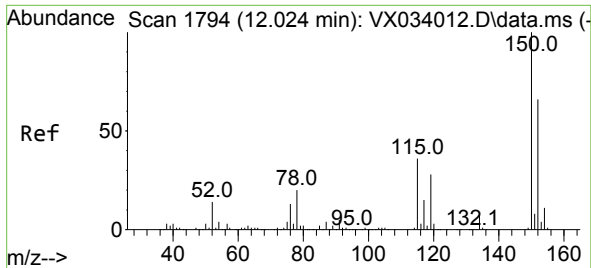


#63  
 Chlorobenzene-d5  
 Concen: 50.000 ug/l  
 RT: 10.055 min Scan# 1471  
 Delta R.T. -0.000 min  
 Lab File: VX034048.D  
 Acq: 06 Feb 2023 23:16

Tgt Ion	Resp	Ion Ratio	Lower	Upper
117	171687	100		
82		48.5	40.6	60.8
119		31.8	25.6	38.4

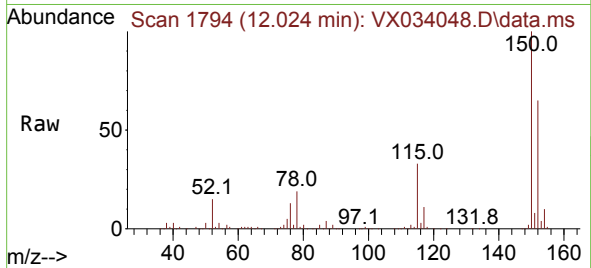




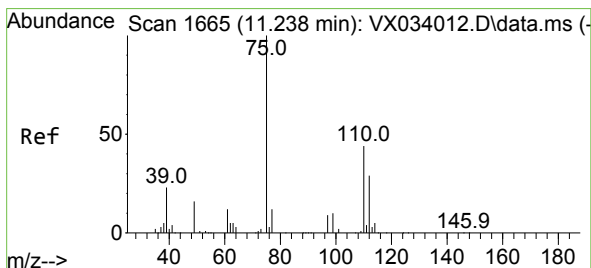
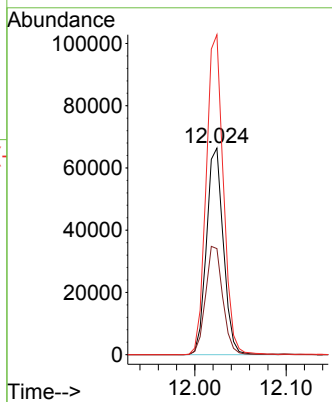
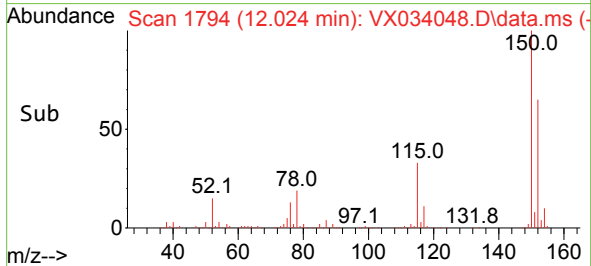


#72  
 1,4-Dichlorobenzene-d4  
 Concen: 50.000 ug/l  
 RT: 12.024 min Scan# 1  
 Delta R.T. -0.000 min  
 Lab File: VX034048.D  
 Acq: 06 Feb 2023 23:16

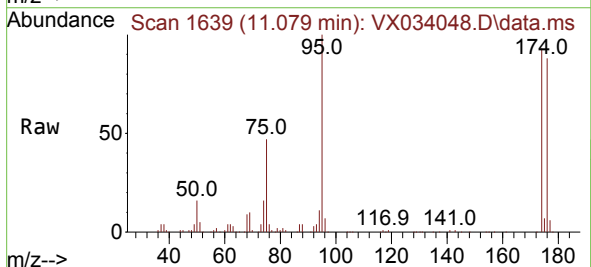
Instrument : MSVOA\_X  
 ClientSampleId : STORAGE-BLANK-SAMPLE-MANAG



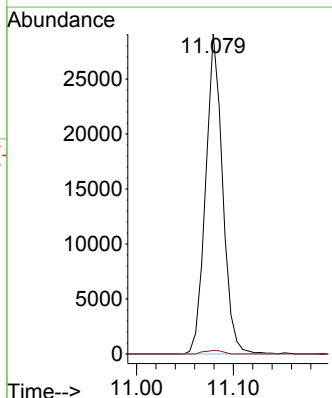
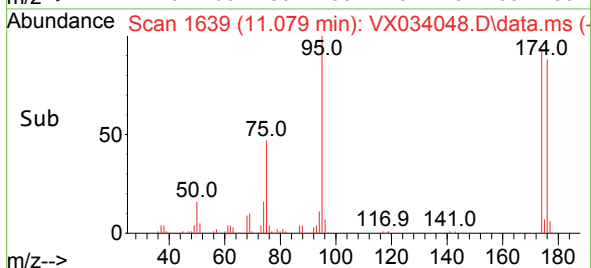
Tgt Ion:152 Resp: 85066  
 Ion Ratio Lower Upper  
 152 100  
 115 53.5 38.7 116.1  
 150 157.3 0.0 348.2

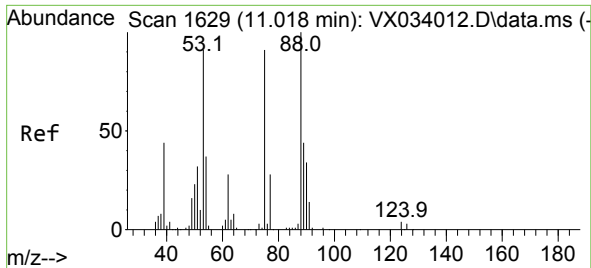


#76  
 1,2,3-Trichloropropane  
 Concen: 24.329 ug/l  
 RT: 11.079 min Scan# 1639  
 Delta R.T. -0.159 min  
 Lab File: VX034048.D  
 Acq: 06 Feb 2023 23:16



Tgt Ion: 75 Resp: 35536  
 Ion Ratio Lower Upper  
 75 100  
 77 1.2 21.8 65.4#





#81  
 trans-1,4-Dichloro-2-butene  
 Concen: 74.924 ug/l  
 RT: 11.079 min Scan# 10  
 Delta R.T. 0.061 min  
 Lab File: VX034048.D  
 Acq: 06 Feb 2023 23:16

Instrument : MSVOA\_X  
 ClientSampleId : STORAGE-BLANK-SAMPLE-MANAG

Tgt Ion: 75 Resp: 35536  
 Ion Ratio Lower Upper  
 75 100  
 53 0.0 83.0 124.6#  
 89 0.0 37.7 56.5#

