

Data Path : Z:\voasrv\HPCHEM1\MSVOA_X\Data\VX020723\
 Data File : VX034038.D
 Acq On : 06 Feb 2023 19:25
 Operator : JC/MD
 Sample : 01308-23
 Misc : 5.0mL/MSVOA_X/WATER
 ALS Vial : 15 Sample Multiplier: 1

Instrument :
 MSVOA_X
 ClientSampleId :
 TRIP-BLANK

Integration Parameters: RTEINT.P

Integrator: RTE
 Smoothing : ON Filtering: 5
 Sampling : 1 Min Area: 3 % of largest Peak
 Start Thrs: 0.2 Max Peaks: 100
 Stop Thrs : 0 Peak Location: TOP

If leading or trailing edge < 100 prefer < Baseline drop else tangent >
 Peak separation: 5

Method : Z:\voasrv\HPCHEM1\MSVOA_X\Method\82X020423W.M
 Title : SW846 8260

Signal : TIC: VX034038.D\data.ms

peak #	R.T. min	first scan	max scan	last scan	PK TY	peak height	corr. area	corr. % max.	% of total
1	5.385	691	705	722	rBV2	70969	208196	35.56%	6.617%
2	5.550	722	732	748	rVB	128744	368426	62.92%	11.710%
3	5.952	787	798	814	rBV	69266	186090	31.78%	5.915%
4	6.763	921	931	948	rBV	182273	434959	74.29%	13.825%
5	8.647	1234	1240	1251	rBV	378631	585514	100.00%	18.610%
6	10.055	1465	1471	1487	rBV	365789	497979	85.05%	15.828%
7	11.079	1634	1639	1654	rBV	304835	394421	67.36%	12.536%
8	12.018	1788	1793	1802	rBV	354254	470663	80.38%	14.960%

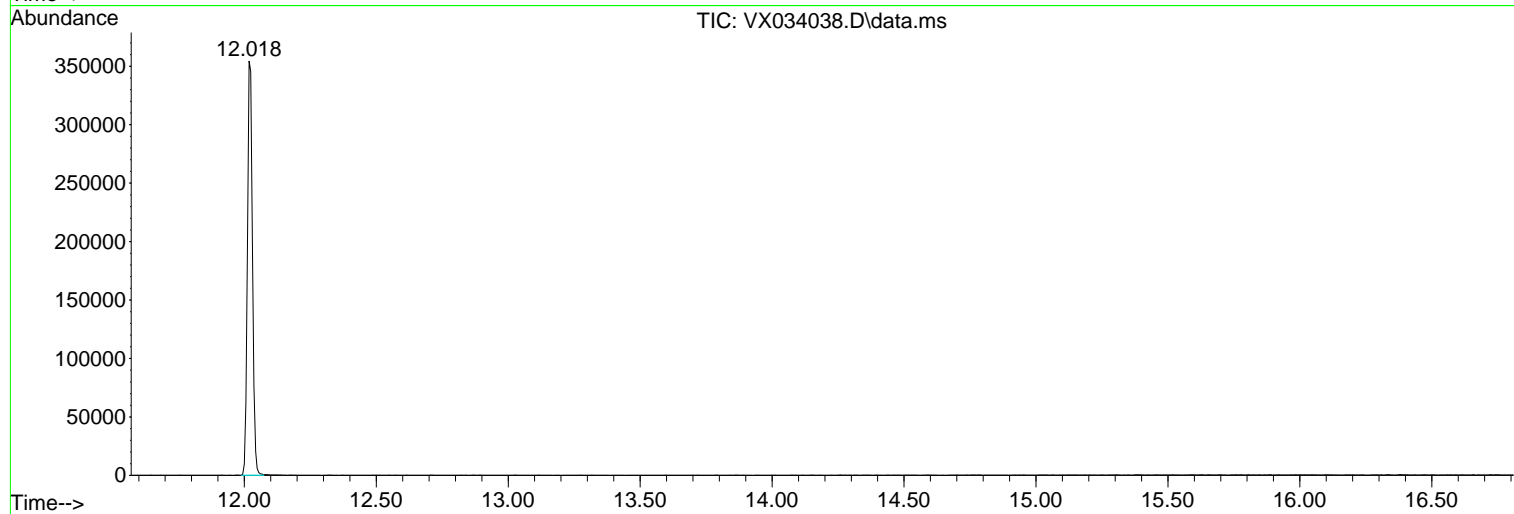
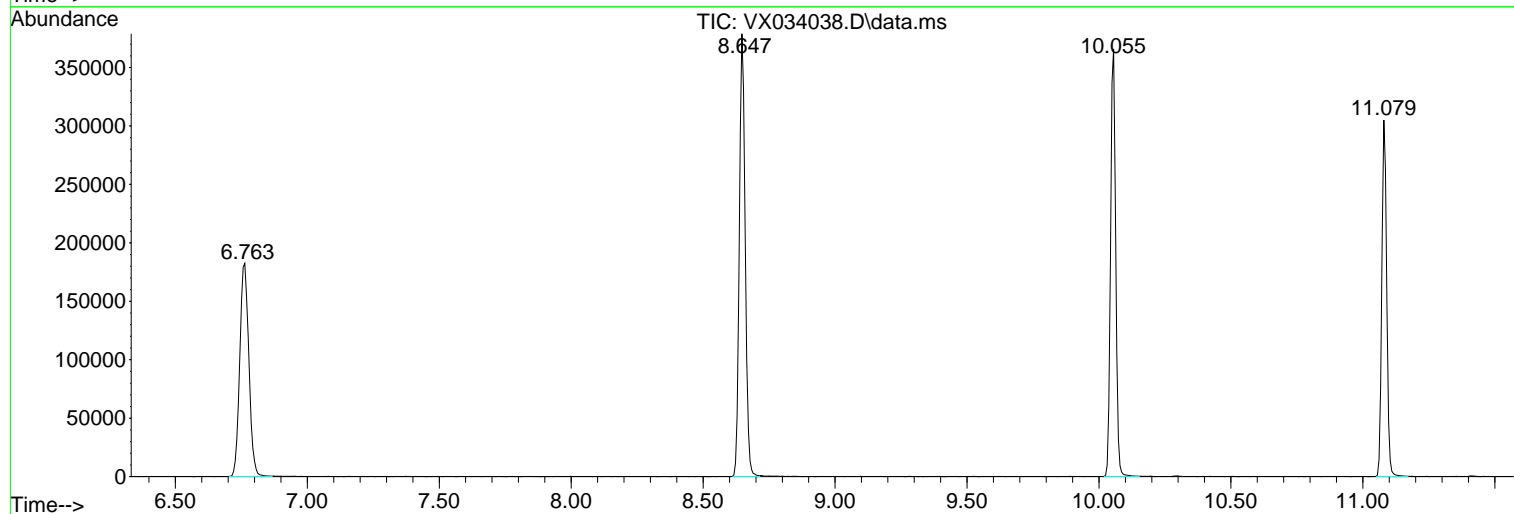
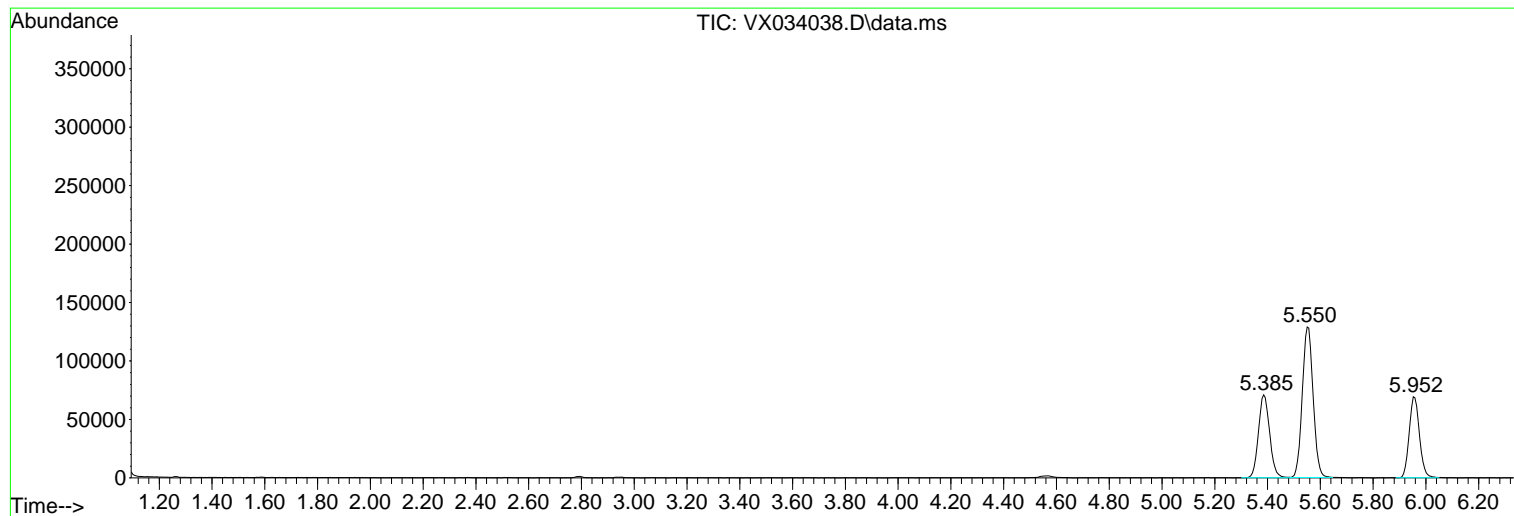
Sum of corrected areas: 3146248

Data Path : Z:\voasrv\HPCHEM1\MSVOA_X\Data\VX020723\
Data File : VX034038.D
Acq On : 06 Feb 2023 19:25
Operator : JC/MD
Sample : 01308-23
Misc : 5.0mL/MSVOA_X/WATER
ALS Vial : 15 Sample Multiplier: 1

Instrument :
MSVOA_X
ClientSampleId :
TRIP-BLANK

Quant Method : Z:\voasrv\HPCHEM1\MSVOA_X\Method\82X020423W.M
Quant Title : SW846 8260

TIC Library : C:\Database\NIST20.L
TIC Integration Parameters: LSCINT.P



Library Search Compound Report

Data Path : Z:\voasrv\HPCHEM1\MSVOA_X\Data\VX020723\
Data File : VX034038.D
Acq On : 06 Feb 2023 19:25
Operator : JC/MD
Sample : 01308-23
Misc : 5.0mL/MSVOA_X/WATER
ALS Vial : 15 Sample Multiplier: 1

Instrument :
MSVOA_X
ClientSampleId :
TRIP-BLANK

Quant Method : Z:\voasrv\HPCHEM1\MSVOA_X\Method\82X020423W.M
Quant Title : SW846 8260

TIC Library : C:\Database\NIST20.L
TIC Integration Parameters: LSCINT.P

No Library Search Compounds Detected

Data Path : Z:\voasrv\HPCHEM1\MSVOA_X\Data\VX020723\
Data File : VX034038.D
Acq On : 06 Feb 2023 19:25
Operator : JC/MD
Sample : 01308-23
Misc : 5.0mL/MSVOA_X/WATER
ALS Vial : 15 Sample Multiplier: 1

Instrument :
MSVOA_X
ClientSampleId :
TRIP-BLANK

Quant Method : Z:\voasrv\HPCHEM1\MSVOA_X\Method\82X020423W.M
Quant Title : SW846 8260

TIC Library : C:\Database\NIST20.L
TIC Integration Parameters: LSCINT.P

TIC Top Hit name	RT	EstConc	Units	Response	#	RT	Resp	Conc
------------------	----	---------	-------	----------	---	----	------	------
