

Data Path : Z:\voasrv\HPCHEM1\MSVOA_X\Data\VX021022\
 Data File : VX026934.D
 Acq On : 10 Feb 2022 20:36
 Operator : JC/MD
 Sample : N1425-03 40X
 Misc : 5.0mL/MSVOA_X/WATER
 ALS Vial : 25 Sample Multiplier: 1

Instrument :
 MSVOA_X
 ClientSampleId :
 31377

Quant Time: Feb 11 04:03:40 2022
 Quant Method : Z:\voasrv\HPCHEM1\MSVOA_X\Method\82X020822W.M
 Quant Title : SW846 8260
 QLast Update : Tue Feb 08 07:07:46 2022
 Response via : Initial Calibration

Compound	R.T.	QIon	Response	Conc	Units	Dev(Min)

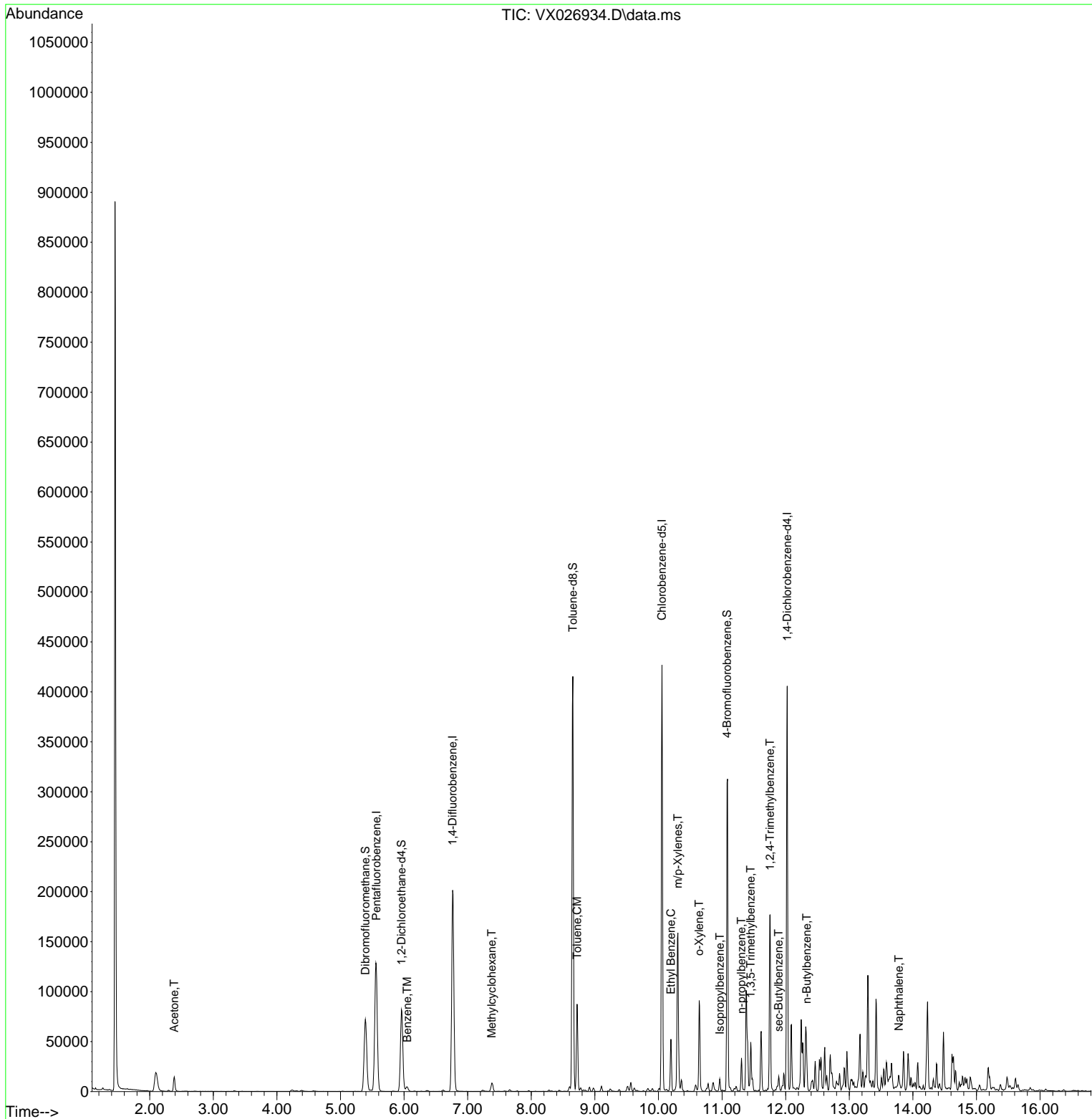
Internal Standards						
1) Pentafluorobenzene	5.562	168	121359	50.000	ug/l	0.00
34) 1,4-Difluorobenzene	6.763	114	206805	50.000	ug/l	0.00
63) Chlorobenzene-d5	10.055	117	185907	50.000	ug/l	0.00
72) 1,4-Dichlorobenzene-d4	12.024	152	81554	50.000	ug/l	0.00
System Monitoring Compounds						
33) 1,2-Dichloroethane-d4	5.958	65	80538	55.284	ug/l	0.00
Spiked Amount	50.000	Range 78 - 117	Recovery	=	110.560%	
35) Dibromofluoromethane	5.391	113	64339	52.219	ug/l	0.00
Spiked Amount	50.000	Range 75 - 124	Recovery	=	104.440%	
50) Toluene-d8	8.653	98	241562	53.411	ug/l	0.00
Spiked Amount	50.000	Range 92 - 112	Recovery	=	106.820%	
62) 4-Bromofluorobenzene	11.079	95	88382	55.506	ug/l	0.00
Spiked Amount	50.000	Range 83 - 123	Recovery	=	111.020%	
Target Compounds						
						Qvalue
16) Acetone	2.386	43	16126	25.203	ug/l	96
39) Methylcyclohexane	7.379	83	3968	1.665	ug/l	89
40) Benzene	6.050	78	5526	0.975	ug/l	95
52) Toluene	8.720	92	32534	9.071	ug/l	100
67) Ethyl Benzene	10.195	91	28292	4.158	ug/l	97
68) m/p-Xylenes	10.305	106	34622	13.224	ug/l	100
69) o-Xylene	10.640	106	19710	7.683	ug/l	97
73) Isopropylbenzene	10.963	105	6154	0.958	ug/l	98
78) n-propylbenzene	11.305	91	19550	2.745	ug/l	99
80) 1,3,5-Trimethylbenzene	11.451	105	20655	3.907	ug/l	97
84) 1,2,4-Trimethylbenzene	11.756	105	80356	15.068	ug/l	98
85) sec-Butylbenzene	11.890	105	6623	1.037	ug/l	87
89) n-Butylbenzene	12.329	91	12223	2.761	ug/l #	50
95) Naphthalene	13.780	128	9683	1.622	ug/l #	94

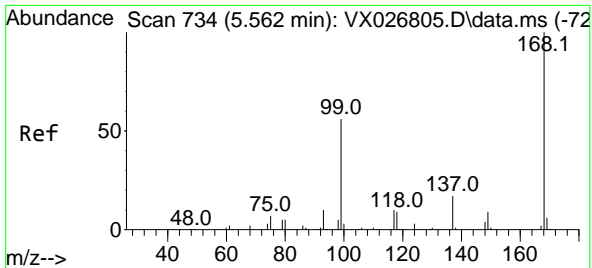
(#) = qualifier out of range (m) = manual integration (+) = signals summed

Data Path : Z:\voasrv\HPCHEM1\MSVOA_X\Data\VX021022\
 Data File : VX026934.D
 Acq On : 10 Feb 2022 20:36
 Operator : JC/MD
 Sample : N1425-03 40X
 Misc : 5.0mL/MSVOA_X/WATER
 ALS Vial : 25 Sample Multiplier: 1

Instrument :
 MSVOA_X
 ClientSampleId :
 31377

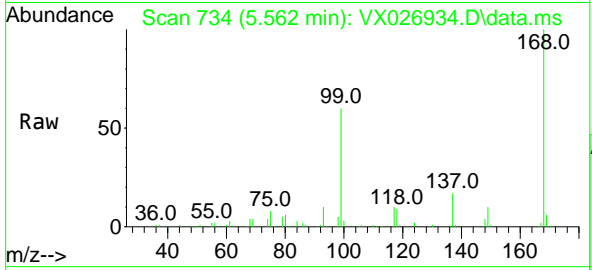
Quant Time: Feb 11 04:03:40 2022
 Quant Method : Z:\voasrv\HPCHEM1\MSVOA_X\Method\82X020822W.M
 Quant Title : SW846 8260
 QLast Update : Tue Feb 08 07:07:46 2022
 Response via : Initial Calibration



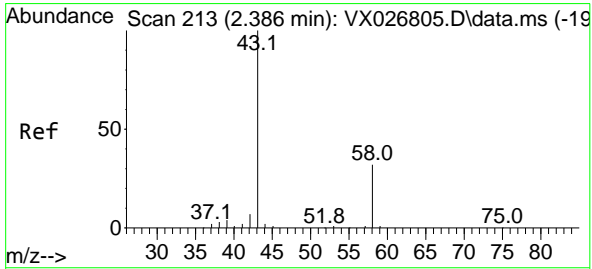
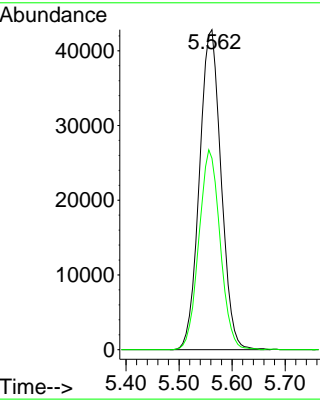
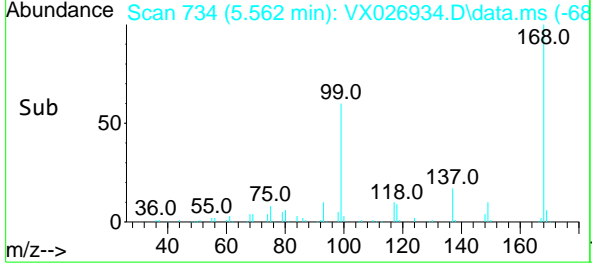


#1
 Pentafluorobenzene
 Concen: 50.000 ug/l
 RT: 5.562 min Scan# 71
 Delta R.T. -0.000 min
 Lab File: VX026934.D
 Acq: 10 Feb 2022 20:36

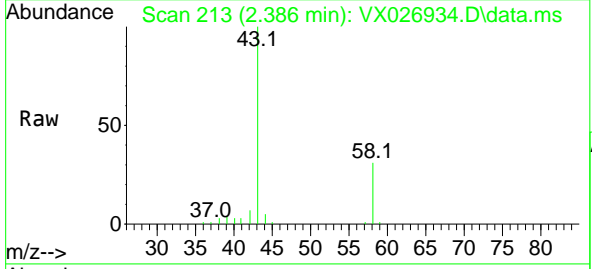
Instrument : MSVOA_X
 ClientSampleId : 31377



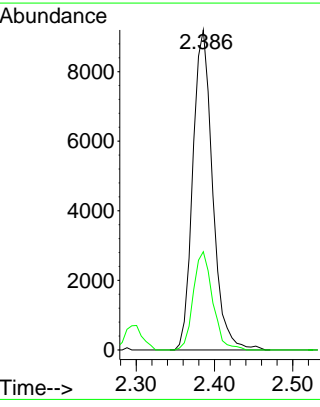
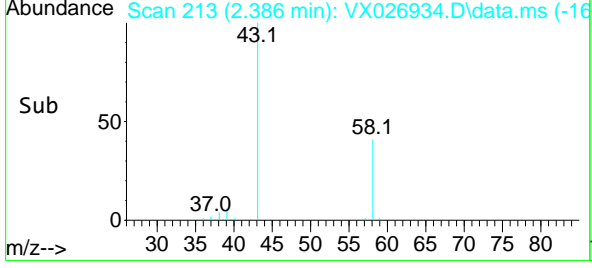
Tgt Ion:168 Resp: 121359
 Ion Ratio Lower Upper
 168 100
 99 59.8 50.3 75.5

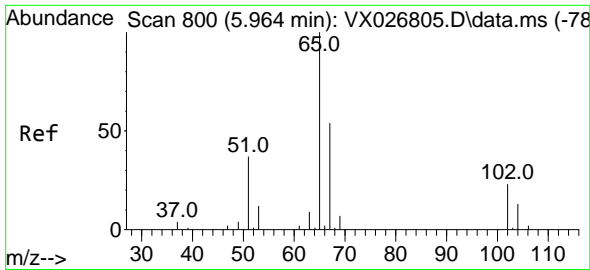


#16
 Acetone
 Concen: 25.203 ug/l
 RT: 2.386 min Scan# 213
 Delta R.T. 0.000 min
 Lab File: VX026934.D
 Acq: 10 Feb 2022 20:36



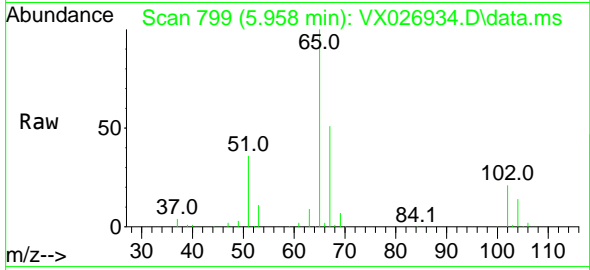
Tgt Ion: 43 Resp: 16126
 Ion Ratio Lower Upper
 43 100
 58 30.7 23.0 34.6



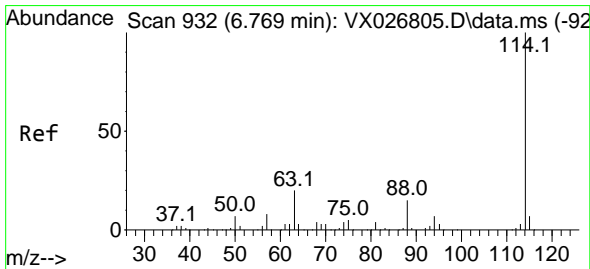
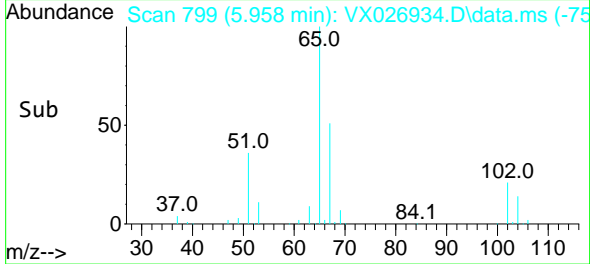
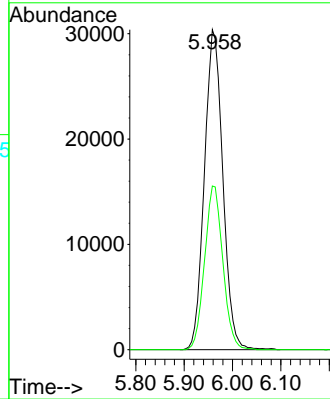


#33
 1,2-Dichloroethane-d4
 Concen: 55.284 ug/l
 RT: 5.958 min Scan# 799
 Delta R.T. -0.006 min
 Lab File: VX026934.D
 Acq: 10 Feb 2022 20:36

Instrument : MSVOA_X
 ClientSampleId : 31377

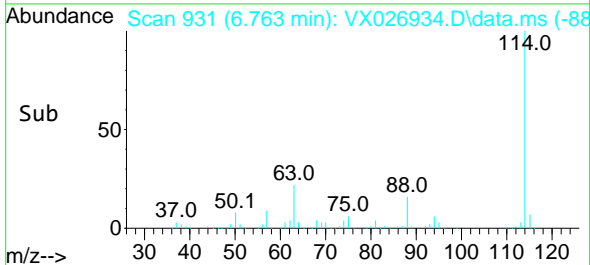
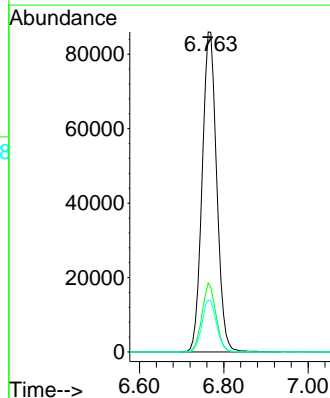
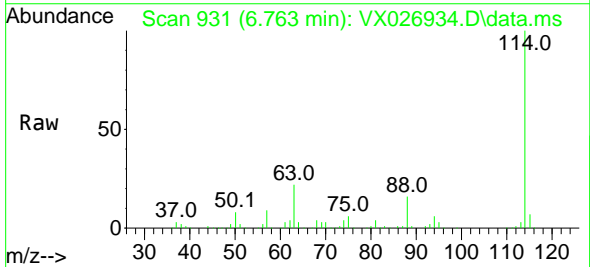


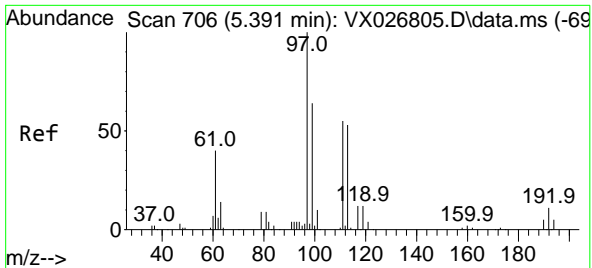
Tgt Ion: 65 Resp: 80538
 Ion Ratio Lower Upper
 65 100
 67 50.7 0.0 100.8



#34
 1,4-Difluorobenzene
 Concen: 50.000 ug/l
 RT: 6.763 min Scan# 931
 Delta R.T. -0.006 min
 Lab File: VX026934.D
 Acq: 10 Feb 2022 20:36

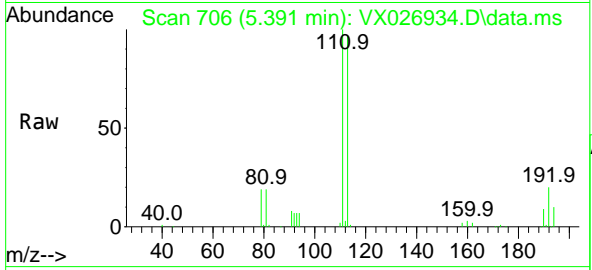
Tgt Ion: 114 Resp: 206805
 Ion Ratio Lower Upper
 114 100
 63 21.6 0.0 42.8
 88 16.2 0.0 33.0





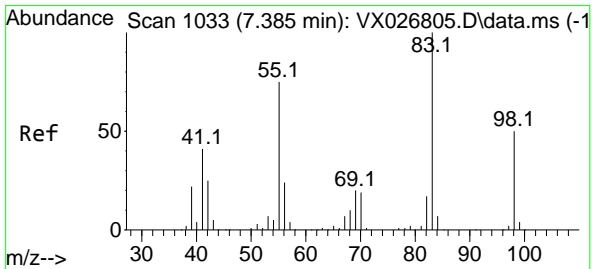
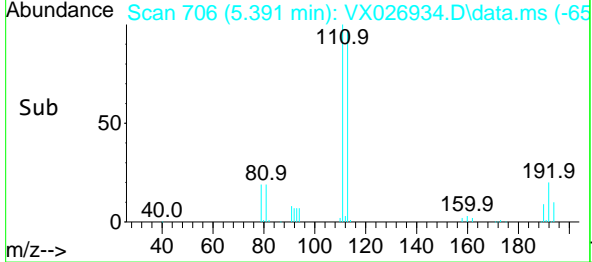
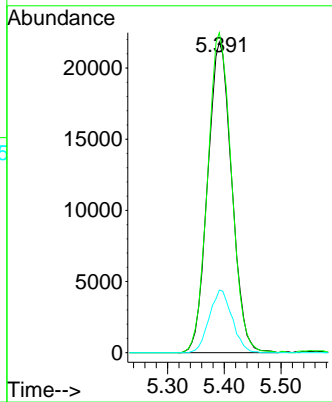
#35
 Dibromofluoromethane
 Concen: 52.219 ug/l
 RT: 5.391 min Scan# 706
 Delta R.T. 0.000 min
 Lab File: VX026934.D
 Acq: 10 Feb 2022 20:36

Instrument : MSVOA_X
 ClientSampleId : 31377



Tgt Ion: 113 Resp: 64339

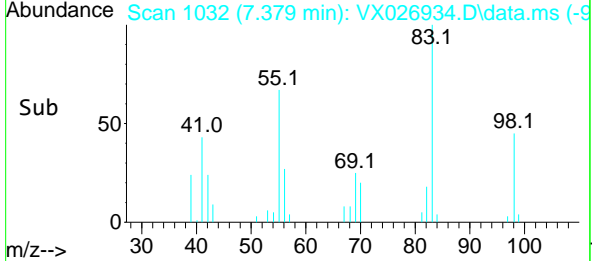
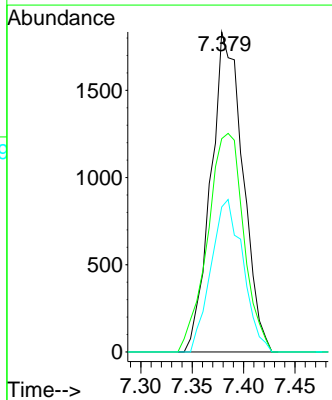
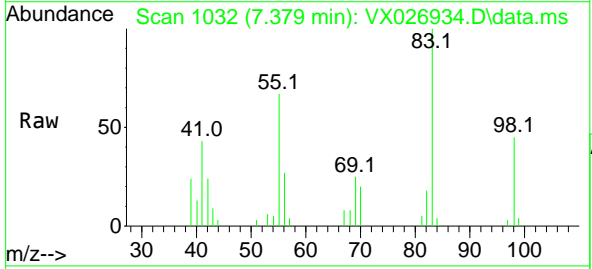
Ion	Ratio	Lower	Upper
113	100		
111	102.2	81.2	121.8
192	19.1	15.0	22.4

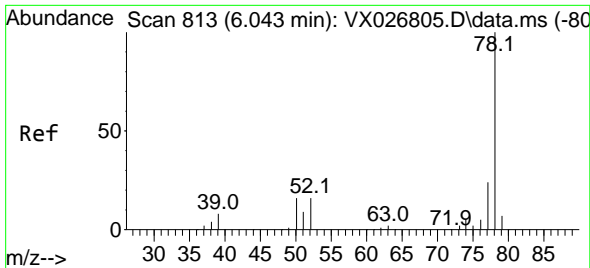


#39
 Methylcyclohexane
 Concen: 1.665 ug/l
 RT: 7.379 min Scan# 1032
 Delta R.T. -0.006 min
 Lab File: VX026934.D
 Acq: 10 Feb 2022 20:36

Tgt Ion: 83 Resp: 3968

Ion	Ratio	Lower	Upper
83	100		
55	66.6	63.6	95.4
98	45.3	38.4	57.6

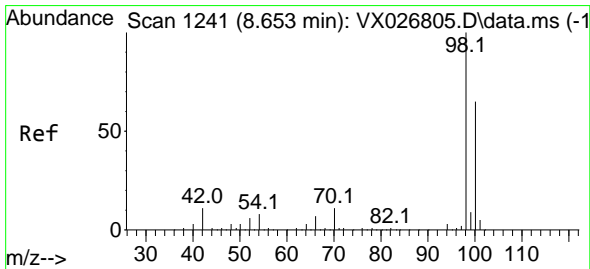
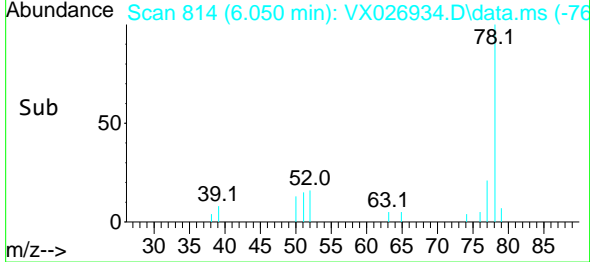
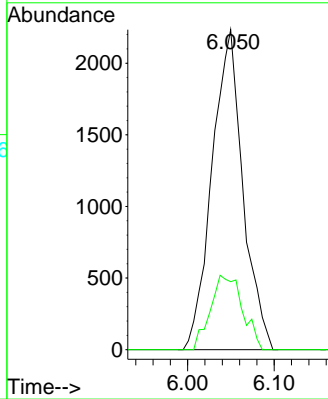
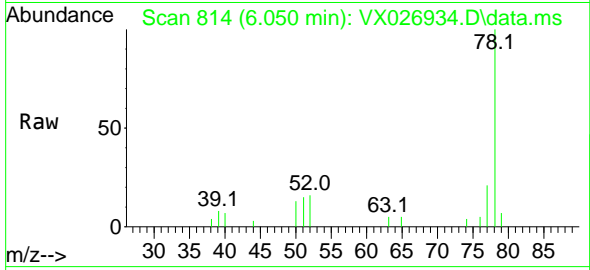




#40
Benzene
Concen: 0.975 ug/l
RT: 6.050 min Scan# 813
Delta R.T. 0.006 min
Lab File: VX026934.D
Acq: 10 Feb 2022 20:36

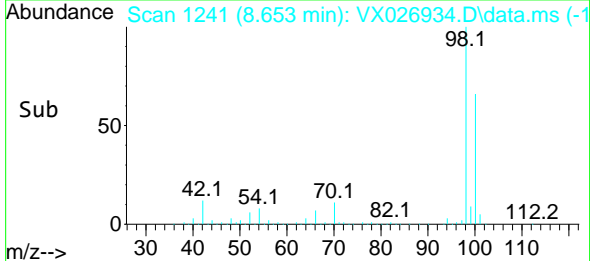
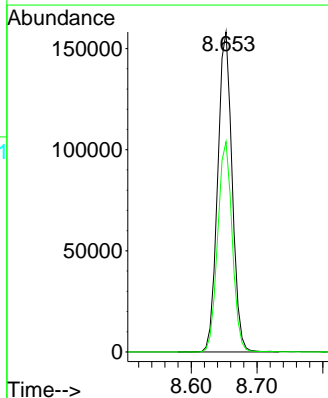
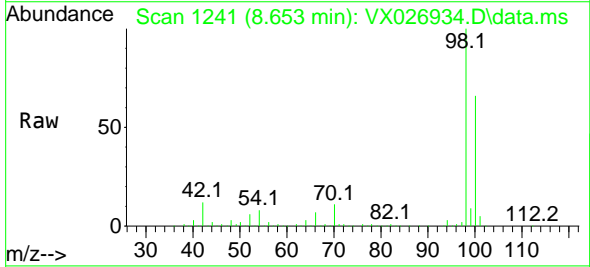
Instrument : MSVOA_X
ClientSampleId : 31377

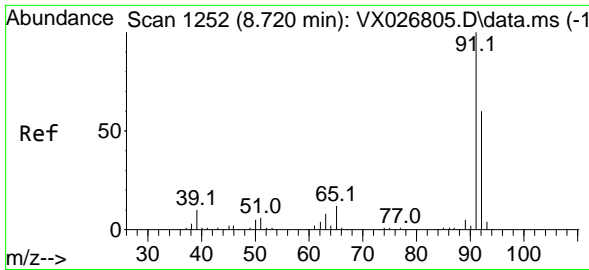
Tgt Ion: 78 Resp: 5526
Ion Ratio Lower Upper
78 100
77 21.3 18.9 28.3



#50
Toluene-d8
Concen: 53.411 ug/l
RT: 8.653 min Scan# 1241
Delta R.T. 0.000 min
Lab File: VX026934.D
Acq: 10 Feb 2022 20:36

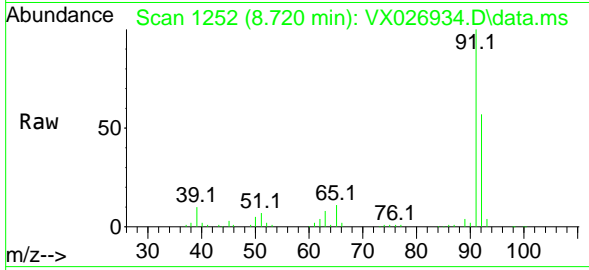
Tgt Ion: 98 Resp: 241562
Ion Ratio Lower Upper
98 100
100 66.1 53.2 79.8



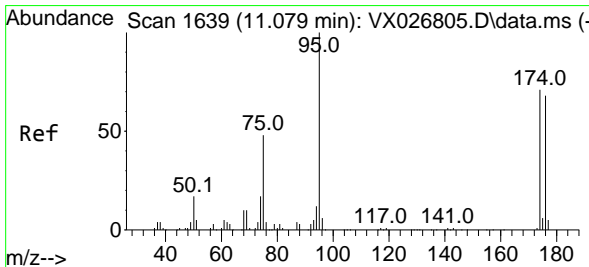
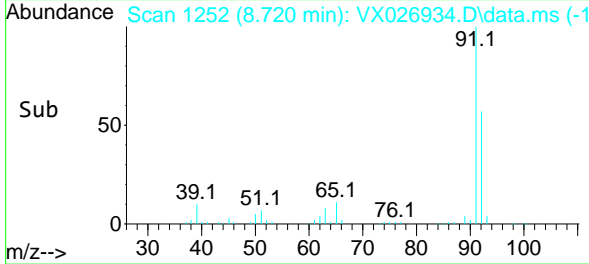
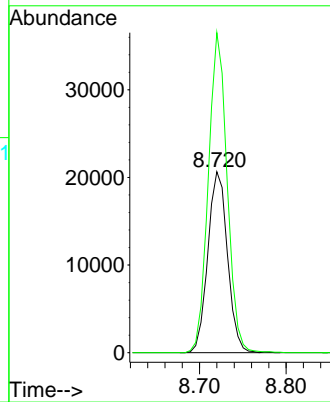


#52
 Toluene
 Concen: 9.071 ug/l
 RT: 8.720 min Scan# 11
 Delta R.T. 0.000 min
 Lab File: VX026934.D
 Acq: 10 Feb 2022 20:36

Instrument :
 MSVOA_X
 ClientSampleId :
 31377

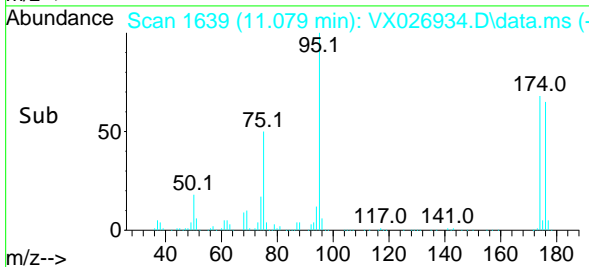
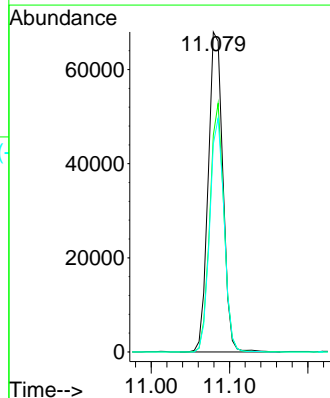
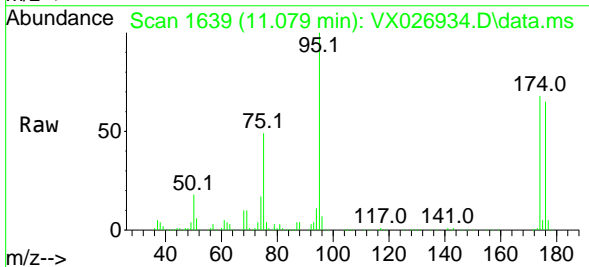


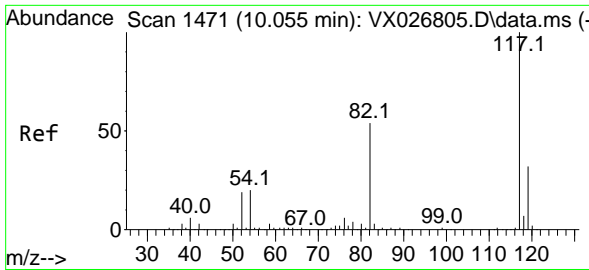
Tgt Ion: 92 Resp: 32534
 Ion Ratio Lower Upper
 92 100
 91 169.2 135.7 203.5



#62
 4-Bromofluorobenzene
 Concen: 55.506 ug/l
 RT: 11.079 min Scan# 1639
 Delta R.T. 0.000 min
 Lab File: VX026934.D
 Acq: 10 Feb 2022 20:36

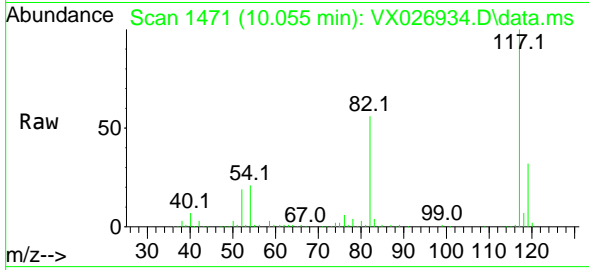
Tgt Ion: 95 Resp: 88382
 Ion Ratio Lower Upper
 95 100
 174 74.3 0.0 148.6
 176 71.4 0.0 141.4





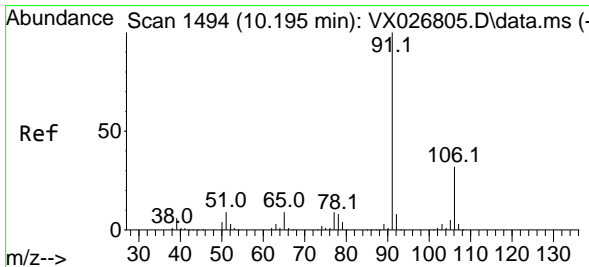
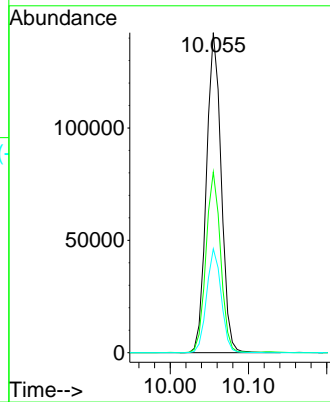
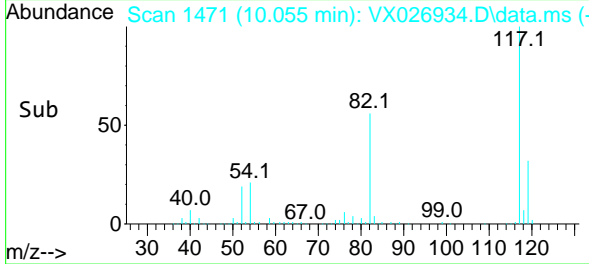
#63
 Chlorobenzene-d5
 Concen: 50.000 ug/l
 RT: 10.055 min Scan# 1471
 Delta R.T. 0.000 min
 Lab File: VX026934.D
 Acq: 10 Feb 2022 20:36

Instrument : MSVOA_X
 ClientSampleId : 31377

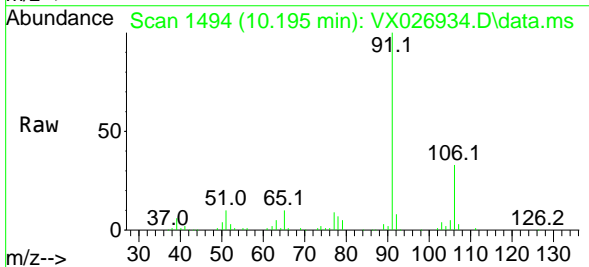


Tgt Ion: 117 Resp: 185907

Ion	Ratio	Lower	Upper
117	100		
82	56.4	45.2	67.8
119	32.5	26.2	39.2

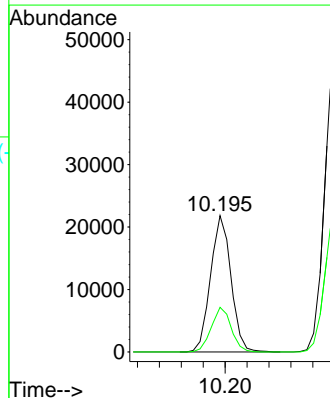
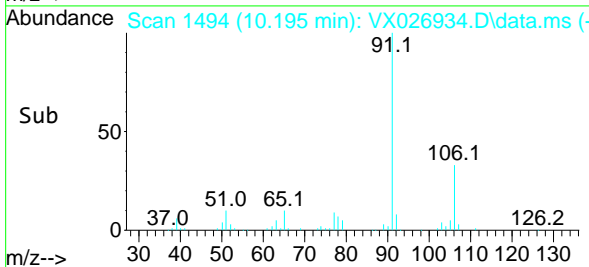


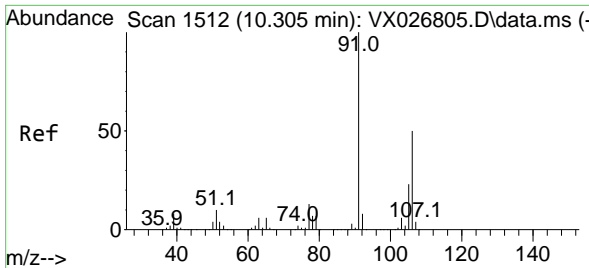
#67
 Ethyl Benzene
 Concen: 4.158 ug/l
 RT: 10.195 min Scan# 1494
 Delta R.T. 0.000 min
 Lab File: VX026934.D
 Acq: 10 Feb 2022 20:36



Tgt Ion: 91 Resp: 28292

Ion	Ratio	Lower	Upper
91	100		
106	32.8	24.7	37.1

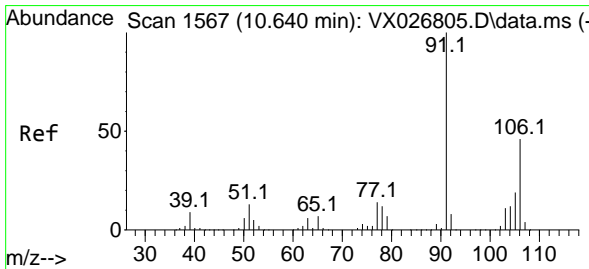
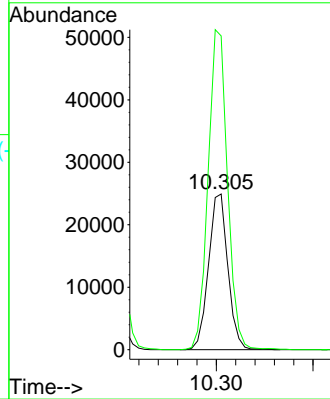
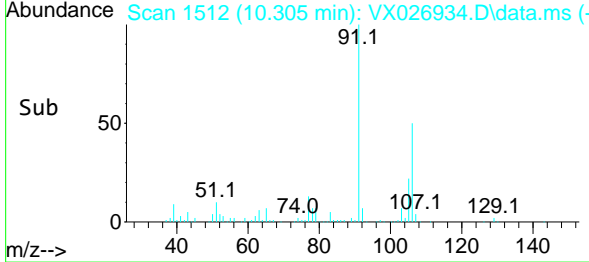
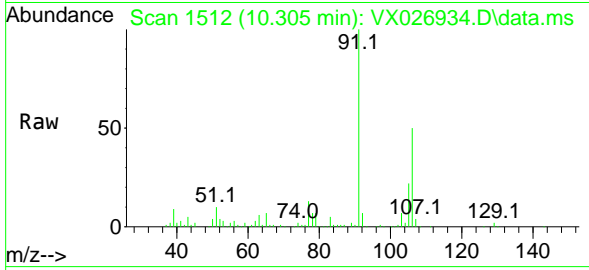




#68
 m/p-Xylenes
 Concen: 13.224 ug/l
 RT: 10.305 min Scan# 1512
 Delta R.T. 0.000 min
 Lab File: VX026934.D
 Acq: 10 Feb 2022 20:36

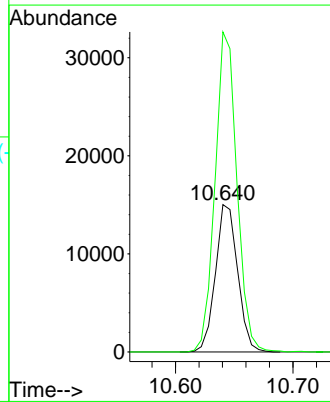
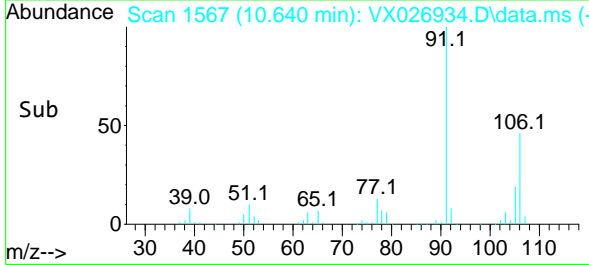
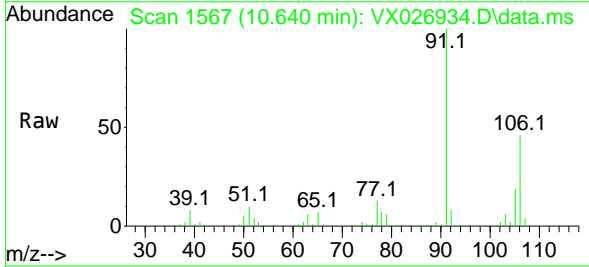
Instrument : MSVOA_X
 ClientSampleId : 31377

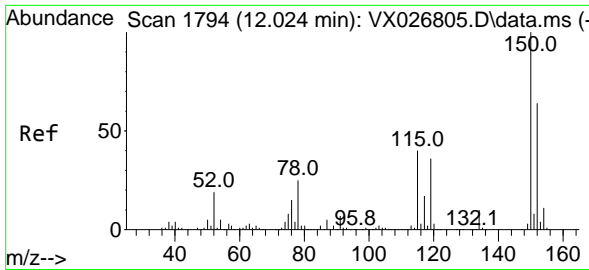
Tgt Ion:106 Resp: 34622
 Ion Ratio Lower Upper
 106 100
 91 206.4 165.3 247.9



#69
 o-Xylene
 Concen: 7.683 ug/l
 RT: 10.640 min Scan# 1567
 Delta R.T. 0.000 min
 Lab File: VX026934.D
 Acq: 10 Feb 2022 20:36

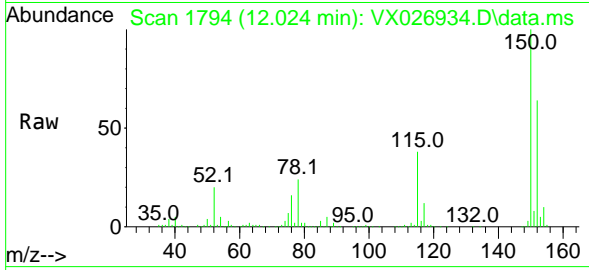
Tgt Ion:106 Resp: 19710
 Ion Ratio Lower Upper
 106 100
 91 214.6 109.7 329.0



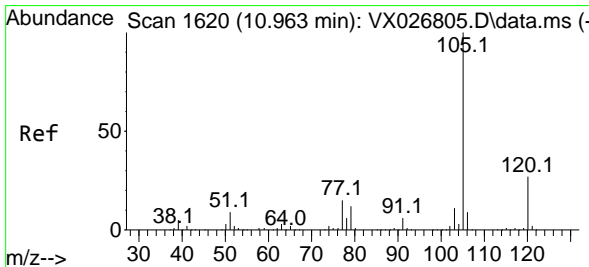
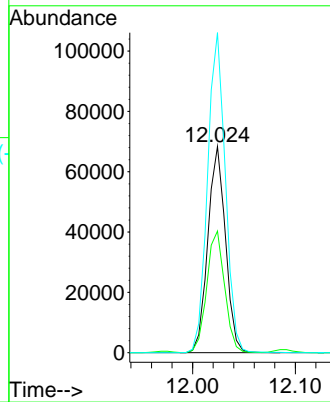
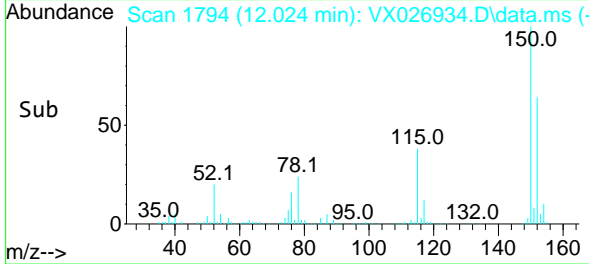


#72
 1,4-Dichlorobenzene-d4
 Concen: 50.000 ug/l
 RT: 12.024 min Scan# 11
 Delta R.T. 0.000 min
 Lab File: VX026934.D
 Acq: 10 Feb 2022 20:36

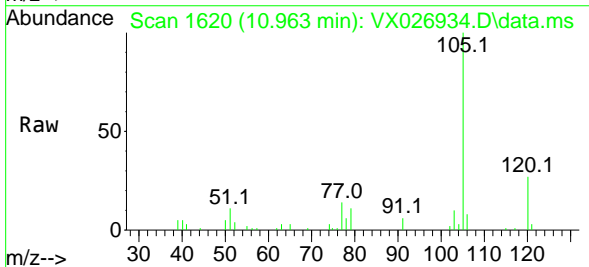
Instrument :
 MSVOA_X
 ClientSampleId :
 31377



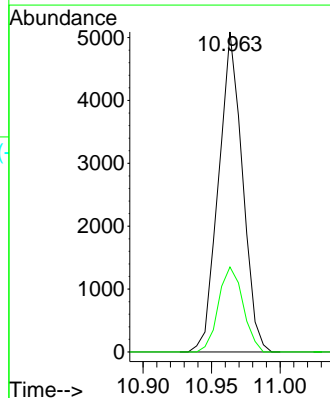
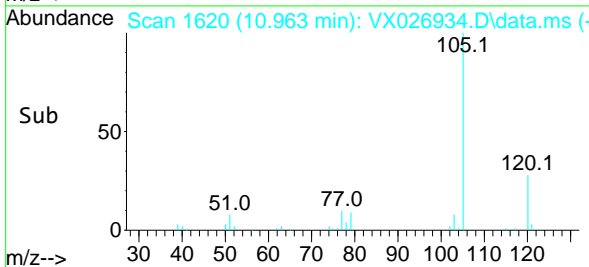
Tgt Ion:152 Resp: 81554
 Ion Ratio Lower Upper
 152 100
 115 59.8 44.2 132.6
 150 156.6 0.0 348.2

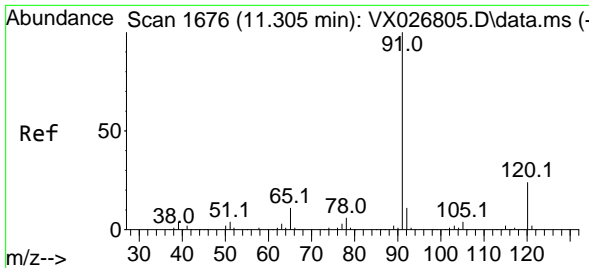


#73
 Isopropylbenzene
 Concen: 0.958 ug/l
 RT: 10.963 min Scan# 1620
 Delta R.T. 0.000 min
 Lab File: VX026934.D
 Acq: 10 Feb 2022 20:36



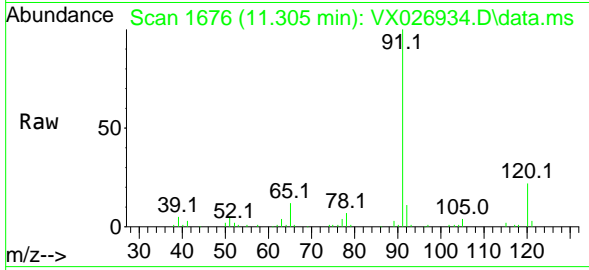
Tgt Ion:105 Resp: 6154
 Ion Ratio Lower Upper
 105 100
 120 27.3 13.1 39.1



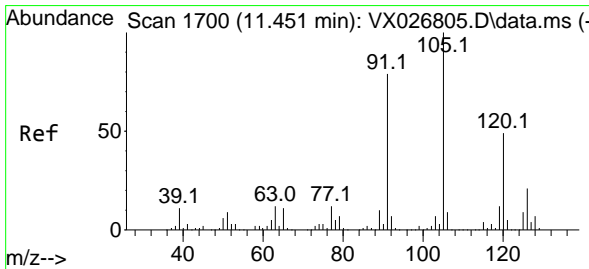
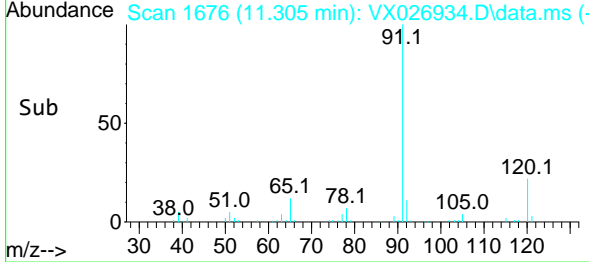
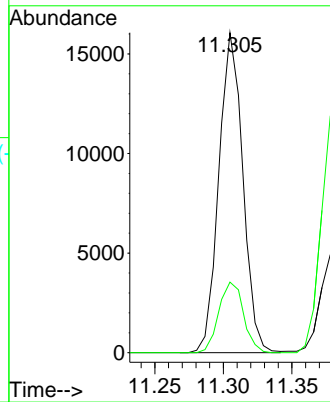


#78
 n-propylbenzene
 Concen: 2.745 ug/l
 RT: 11.305 min Scan# 1100
 Delta R.T. 0.000 min
 Lab File: VX026934.D
 Acq: 10 Feb 2022 20:36

Instrument : MSVOA_X
 ClientSampleId : 31377

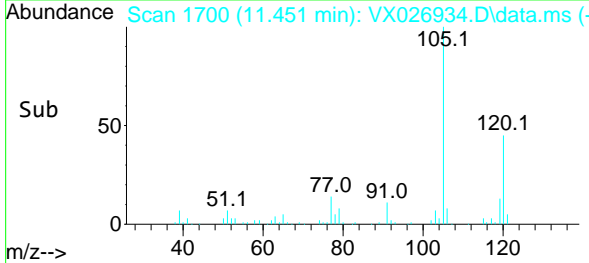
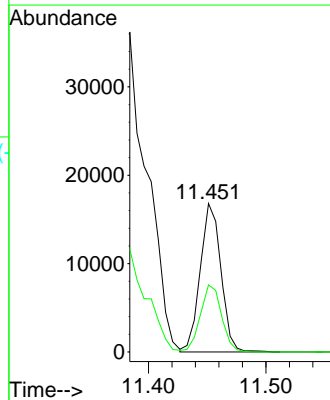
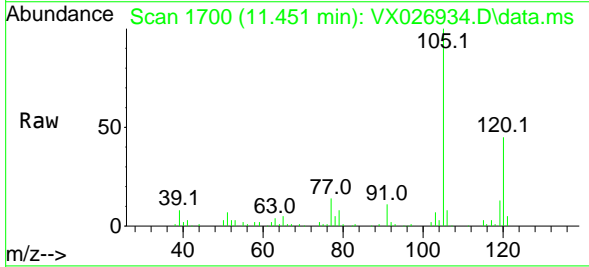


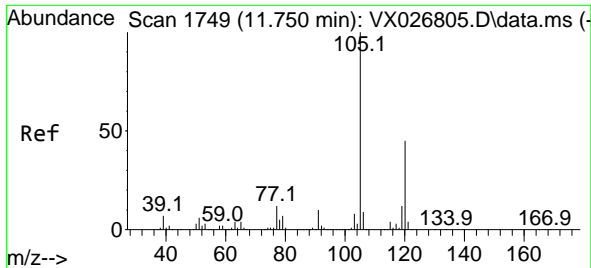
Tgt Ion: 91 Resp: 19550
 Ion Ratio Lower Upper
 91 100
 120 22.7 11.6 34.7



#80
 1,3,5-Trimethylbenzene
 Concen: 3.907 ug/l
 RT: 11.451 min Scan# 1700
 Delta R.T. 0.000 min
 Lab File: VX026934.D
 Acq: 10 Feb 2022 20:36

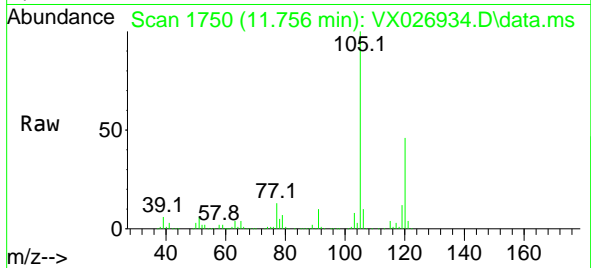
Tgt Ion: 105 Resp: 20655
 Ion Ratio Lower Upper
 105 100
 120 46.1 24.0 72.0



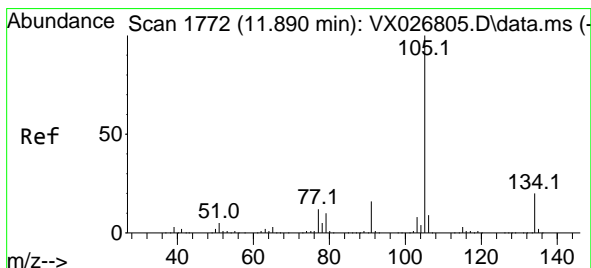
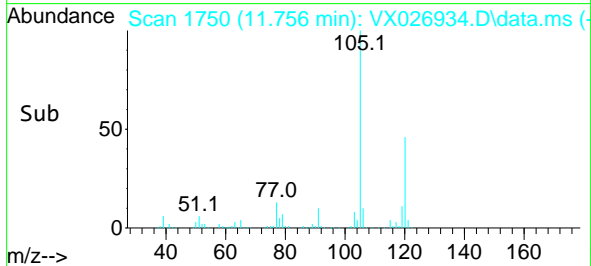
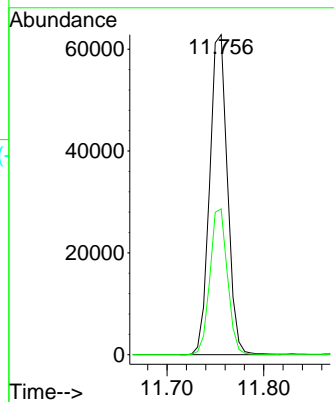


#84
 1,2,4-Trimethylbenzene
 Concen: 15.068 ug/l
 RT: 11.756 min Scan# 11756
 Delta R.T. 0.006 min
 Lab File: VX026934.D
 Acq: 10 Feb 2022 20:36

Instrument :
 MSVOA_X
 ClientSampleId :
 31377

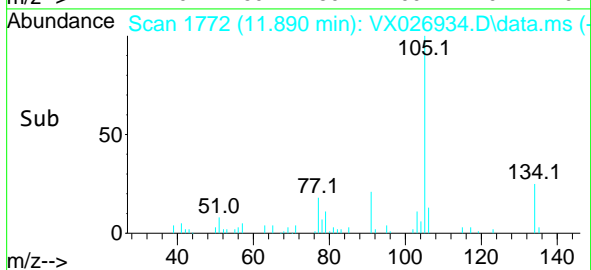
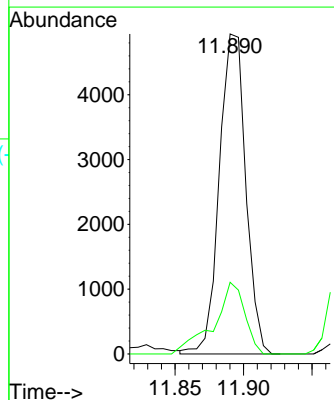
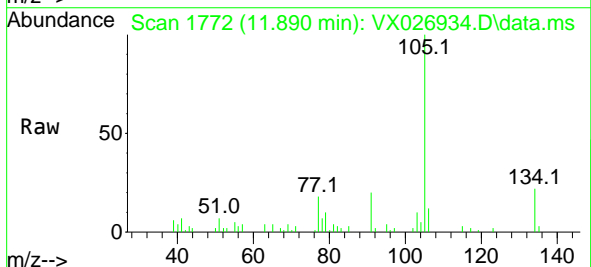


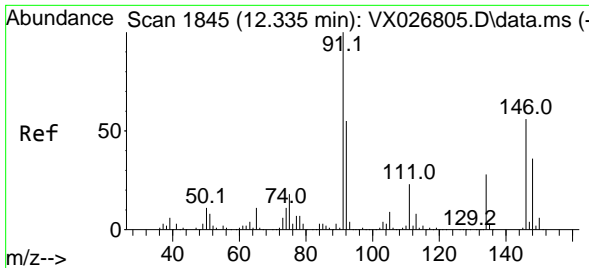
Tgt Ion:105 Resp: 80356
 Ion Ratio Lower Upper
 105 100
 120 44.9 21.9 65.5



#85
 sec-Butylbenzene
 Concen: 1.037 ug/l
 RT: 11.890 min Scan# 1772
 Delta R.T. 0.000 min
 Lab File: VX026934.D
 Acq: 10 Feb 2022 20:36

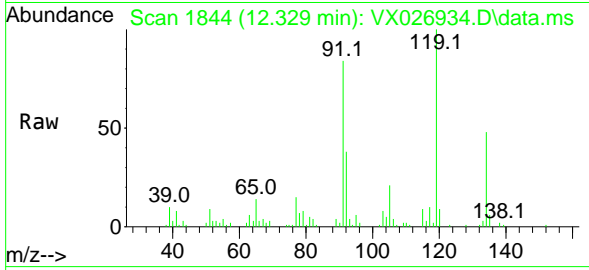
Tgt Ion:105 Resp: 6623
 Ion Ratio Lower Upper
 105 100
 134 26.2 10.1 30.1



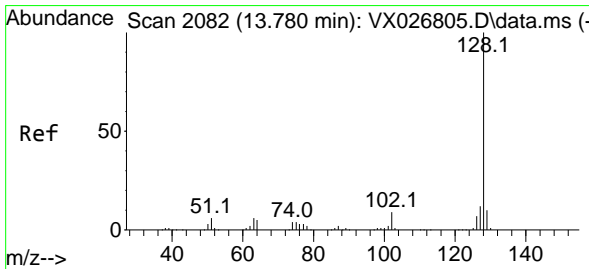
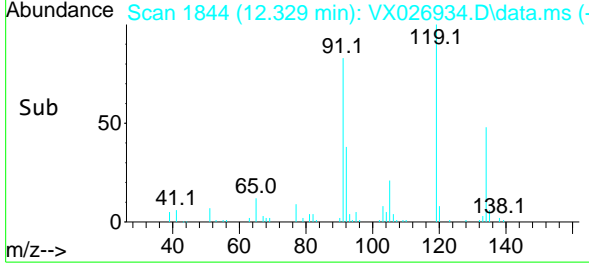
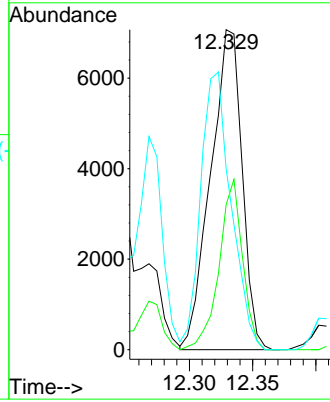


#89
 n-Butylbenzene
 Concen: 2.761 ug/l
 RT: 12.329 min Scan# 1844
 Delta R.T. -0.006 min
 Lab File: VX026934.D
 Acq: 10 Feb 2022 20:36

Instrument : MSVOA_X
 Client Sample Id : 31377



Tgt Ion: 91 Resp: 12223
 Ion Ratio Lower Upper
 91 100
 92 39.8 27.2 81.6
 134 83.6 13.1 39.1#



#95
 Naphthalene
 Concen: 1.622 ug/l
 RT: 13.780 min Scan# 2082
 Delta R.T. 0.000 min
 Lab File: VX026934.D
 Acq: 10 Feb 2022 20:36

Tgt Ion: 128 Resp: 9683
 Ion Ratio Lower Upper
 128 100
 127 14.1 10.3 15.5
 129 14.3 8.7 13.1#

