

Data Path : Z:\voasrv\HPCHEM1\MSVOA_X\Data\VX021023\
 Data File : VX034081.D
 Acq On : 08 Feb 2023 13:33
 Operator : JC/MD
 Sample : IBLK
 Misc : 5.0mL/MSVOA_X/WATER
 ALS Vial : 10 Sample Multiplier: 1

Instrument :
 MSVOA_X
 ClientSampleId :
 IBLK

Integration Parameters: RTEINT.P

Integrator: RTE
 Smoothing : ON Filtering: 5
 Sampling : 1 Min Area: 3 % of largest Peak
 Start Thrs: 0.2 Max Peaks: 100
 Stop Thrs : 0 Peak Location: TOP

If leading or trailing edge < 100 prefer < Baseline drop else tangent >
 Peak separation: 5

Method : Z:\voasrv\HPCHEM1\MSVOA_X\Method\82X020423W.M
 Title : SW846 8260

Signal : TIC: VX034081.D\data.ms

peak #	R.T. min	first scan	max scan	last scan	PK TY	peak height	corr. area	corr. % max.	% of total
1	5.385	694	705	719	rBV	60632	175487	35.21%	6.387%
2	5.549	721	732	747	rVV	111567	312111	62.61%	11.360%
3	5.952	789	798	817	rBV	59440	159226	31.94%	5.796%
4	6.763	921	931	945	rBV	154196	367159	73.66%	13.364%
5	8.646	1234	1240	1249	rBV	320705	498470	100.00%	18.144%
6	10.055	1465	1471	1482	rBV	322576	432927	86.85%	15.758%
7	11.079	1634	1639	1650	rBV	280673	357467	71.71%	13.011%
8	12.024	1788	1794	1802	rBV	335569	433808	87.03%	15.790%
9	14.078	2125	2131	2141	rVB9	1747	5078	1.02%	0.185%
10	14.231	2148	2156	2163	rVB9	2584	5629	1.13%	0.205%

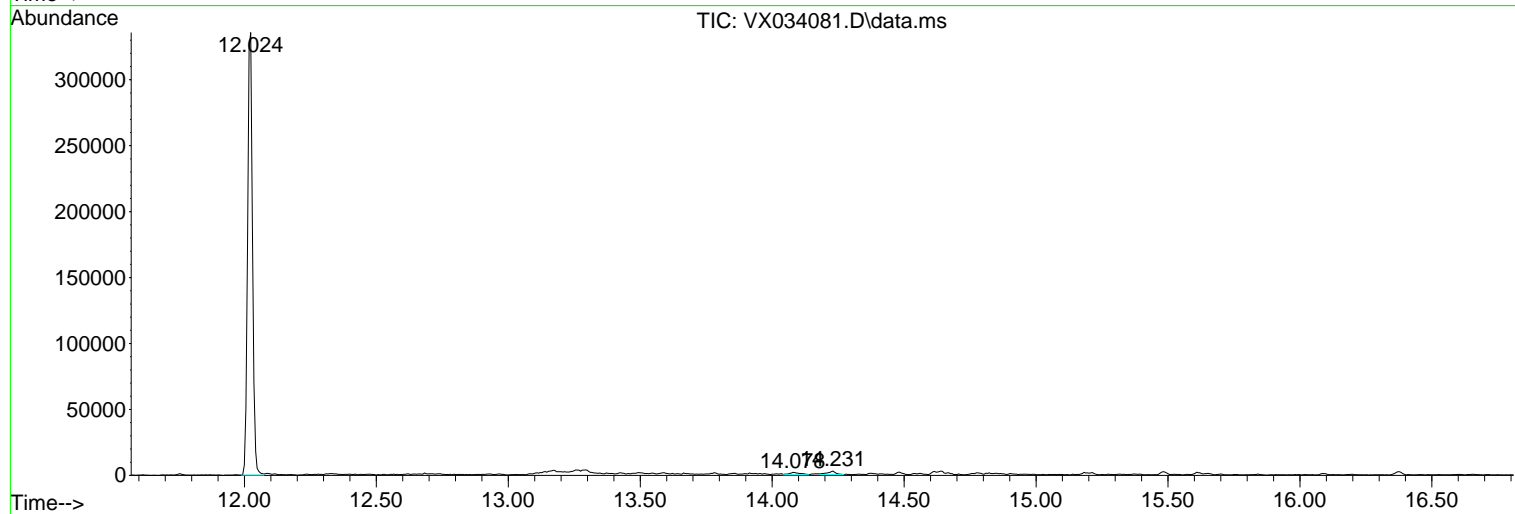
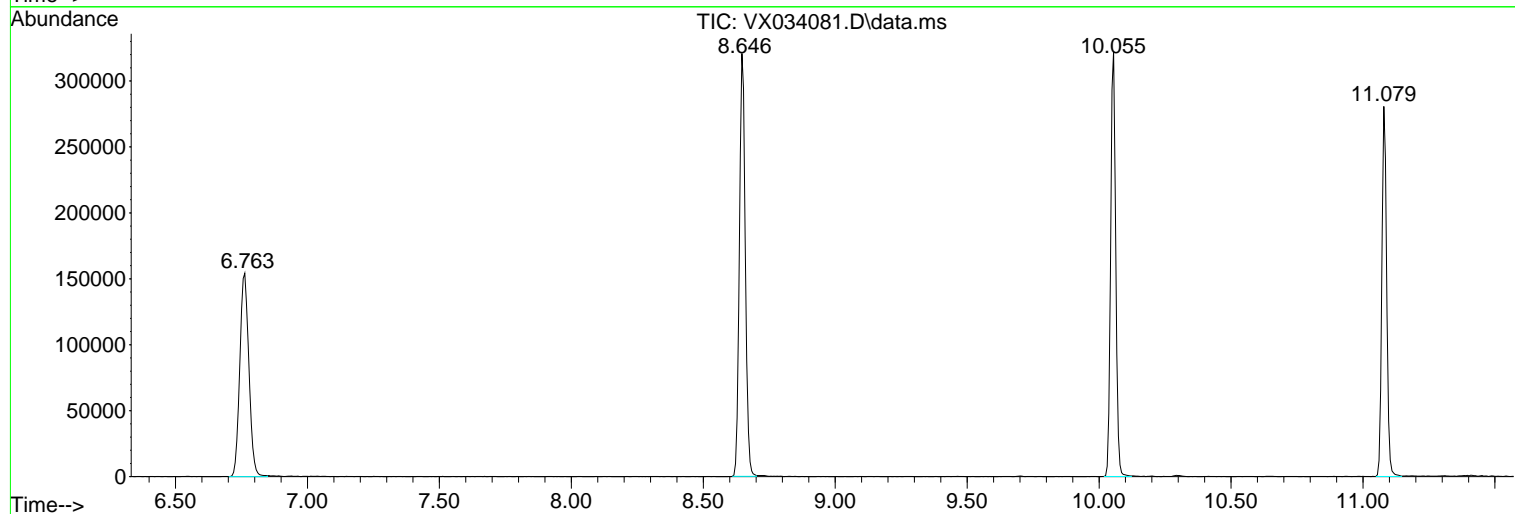
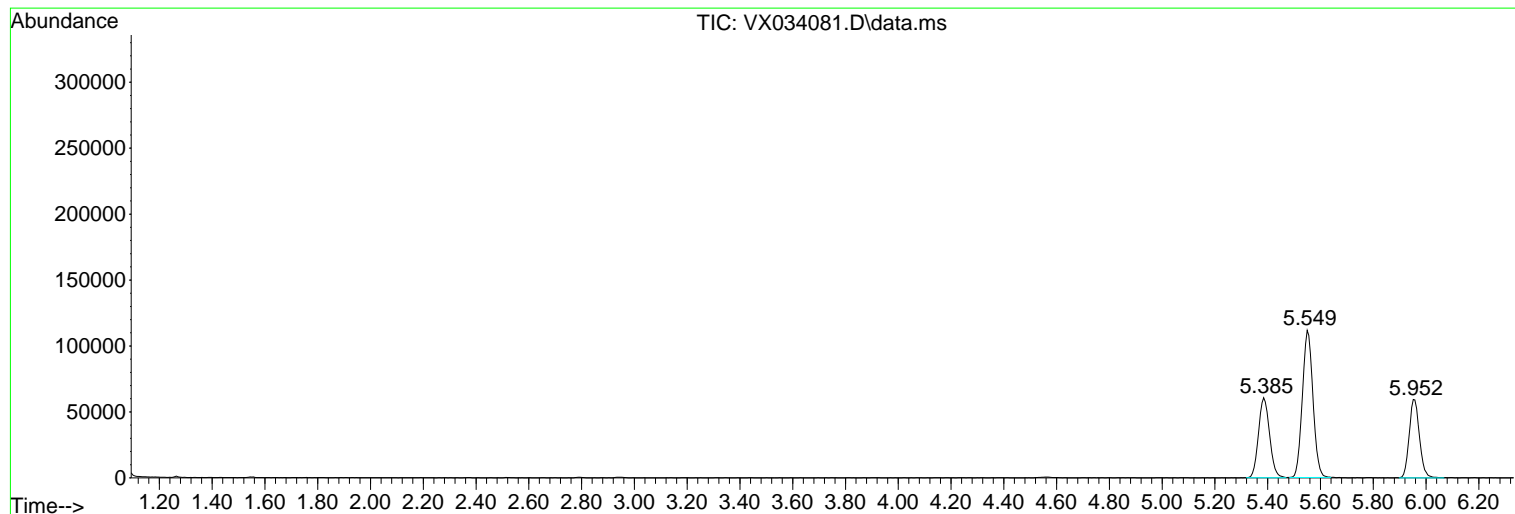
Sum of corrected areas: 2747362

Data Path : Z:\voasrv\HPCHEM1\MSVOA_X\Data\VX021023\
 Data File : VX034081.D
 Acq On : 08 Feb 2023 13:33
 Operator : JC/MD
 Sample : IBLK
 Misc : 5.0mL/MSVOA_X/WATER
 ALS Vial : 10 Sample Multiplier: 1

Instrument :
 MSVOA_X
 ClientSampleId :
 IBLK

Quant Method : Z:\voasrv\HPCHEM1\MSVOA_X\Method\82X020423W.M
 Quant Title : SW846 8260

TIC Library : C:\Database\NIST20.L
 TIC Integration Parameters: LSCINT.P



Library Search Compound Report

Data Path : Z:\voasrv\HPCHEM1\MSVOA_X\Data\VX021023\
Data File : VX034081.D
Acq On : 08 Feb 2023 13:33
Operator : JC/MD
Sample : IBLK
Misc : 5.0mL/MSVOA_X/WATER
ALS Vial : 10 Sample Multiplier: 1

Instrument :
MSVOA_X
ClientSampleId :
IBLK

Quant Method : Z:\voasrv\HPCHEM1\MSVOA_X\Method\82X020423W.M
Quant Title : SW846 8260

TIC Library : C:\Database\NIST20.L
TIC Integration Parameters: LSCINT.P

No Library Search Compounds Detected

Data Path : Z:\voasrv\HPCHEM1\MSVOA_X\Data\VX021023\
Data File : VX034081.D
Acq On : 08 Feb 2023 13:33
Operator : JC/MD
Sample : IBLK
Misc : 5.0mL/MSVOA_X/WATER
ALS Vial : 10 Sample Multiplier: 1

Instrument :
MSVOA_X
ClientSampleId :
IBLK

Quant Method : Z:\voasrv\HPCHEM1\MSVOA_X\Method\82X020423W.M
Quant Title : SW846 8260

TIC Library : C:\Database\NIST20.L
TIC Integration Parameters: LSCINT.P

TIC Top Hit name	RT	EstConc	Units	Response	--Internal Standard--		
					#	RT	Resp Conc
