

Data Path : Z:\voasrv\HPCHEM1\MSVOA\_X\Data\VX021122\  
 Data File : VX027004.D  
 Acq On : 12 Feb 2022 05:58  
 Operator : JC/MD  
 Sample : N1465-09 20X  
 Misc : 6.54g/5mL/100uL/5.00mL/MSVOA\_X/MEOH  
 ALS Vial : 48 Sample Multiplier: 1

Instrument :  
 MSVOA\_X  
 ClientSampleId :  
 A5-9-9.0

Integration Parameters: RTEINT.P

Integrator: RTE

Smoothing : ON

Filtering: 5

Sampling : 1

Min Area: 3 % of largest Peak

Start Thrs: 0.2

Max Peaks: 100

Stop Thrs : 0

Peak Location: TOP

If leading or trailing edge < 100 prefer < Baseline drop else tangent >

Peak separation: 5

Method : Z:\voasrv\HPCHEM1\MSVOA\_X\Method\82X020822W.M

Title : SW846 8260

Signal : TIC: VX027004.D\data.ms

peak #	R.T. min	first scan	max scan	last scan	PK TY	peak height	corr. area	corr. % max.	% of total
1	5.391	695	706	721	rBV	67628	196115	32.59%	6.224%
2	5.556	721	733	750	rVB	122814	347858	57.81%	11.041%
3	5.964	790	800	811	rBV	75696	201784	33.53%	6.404%
4	6.763	922	931	943	rBV	186518	447433	74.36%	14.201%
5	8.653	1232	1241	1259	rBV	391527	601719	100.00%	19.098%
6	10.055	1465	1471	1488	rVB	392956	523010	86.92%	16.600%
7	11.079	1634	1639	1652	rBV	295201	384225	63.85%	12.195%
8	12.024	1788	1794	1802	rBV	370364	448583	74.55%	14.237%

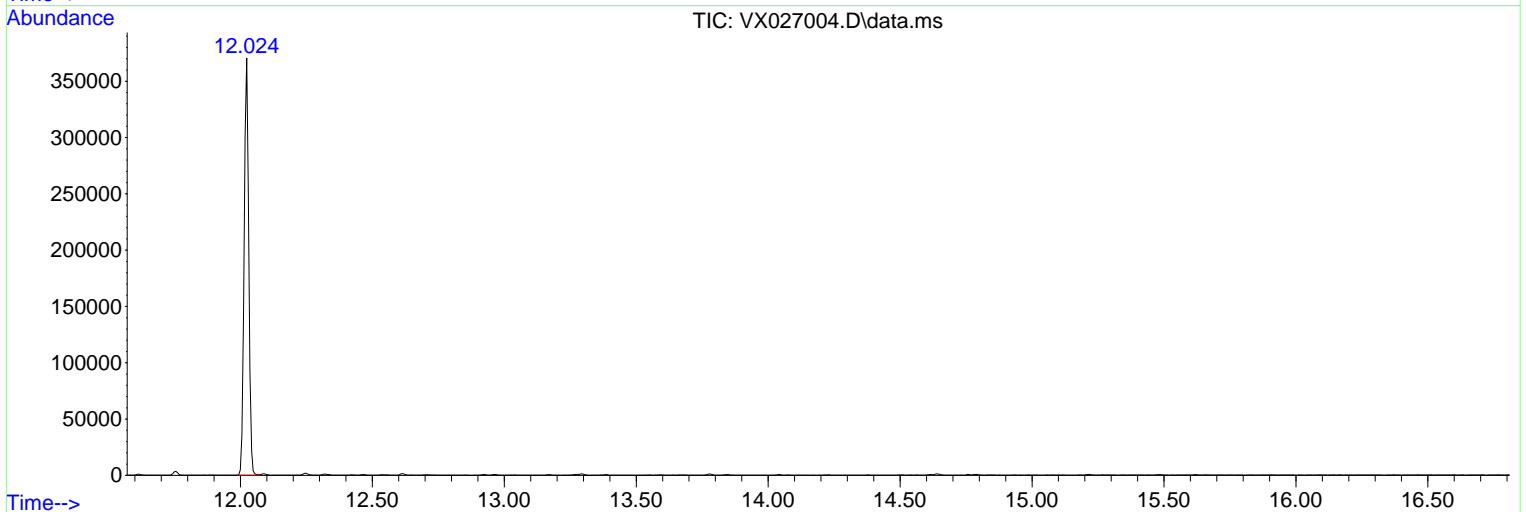
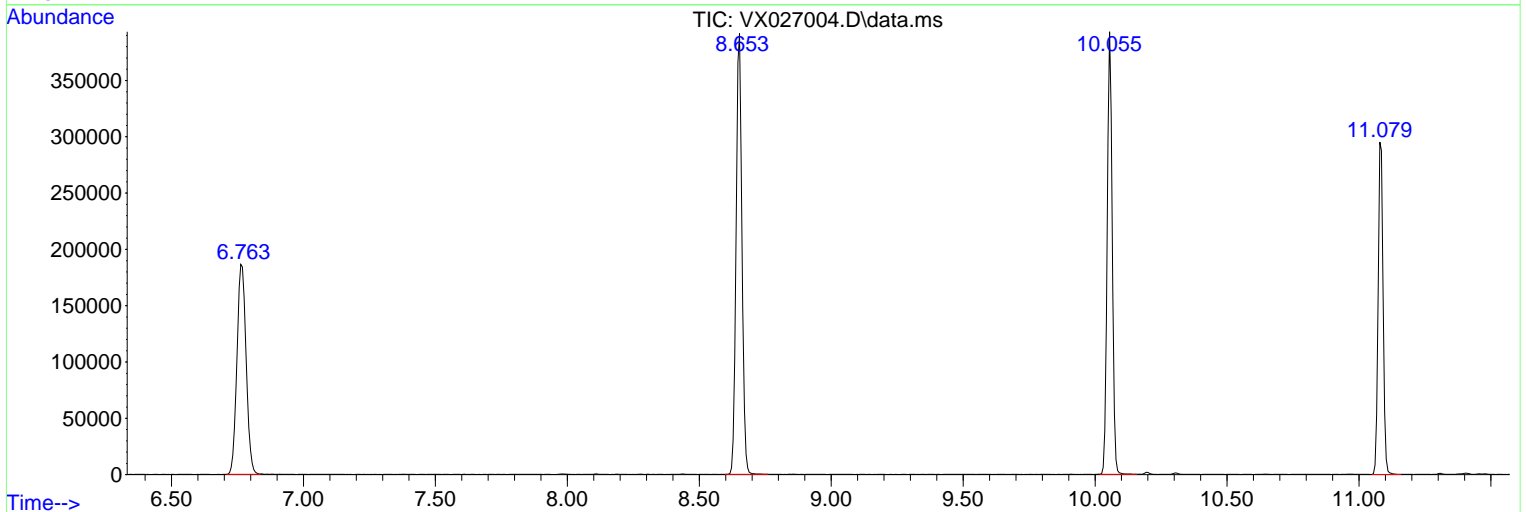
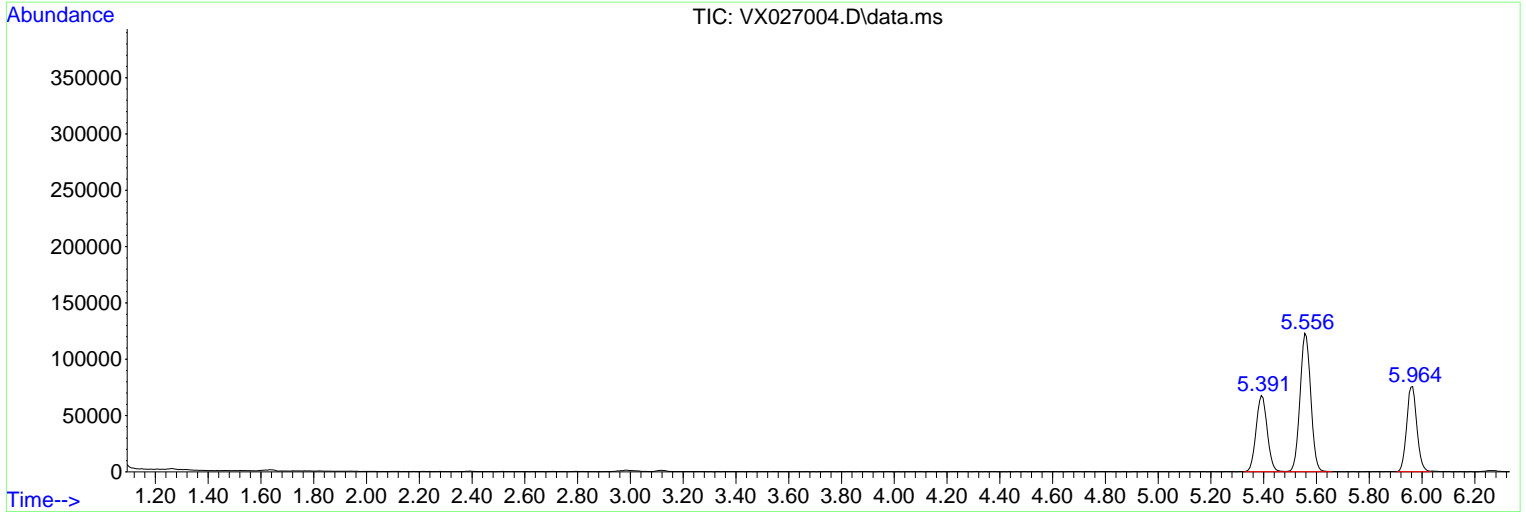
Sum of corrected areas: 3150727

Data Path : Z:\voasrv\HPCHEM1\MSVOA\_X\Data\VX021122\  
 Data File : VX027004.D  
 Acq On : 12 Feb 2022 05:58  
 Operator : JC/MD  
 Sample : N1465-09 20X  
 Misc : 6.54g/5mL/100uL/5.00mL/MSVOA\_X/MEOH  
 ALS Vial : 48 Sample Multiplier: 1

Instrument :  
 MSVOA\_X  
 ClientSampleId :  
 A5-9-9.0

Quant Method : Z:\voasrv\HPCHEM1\MSVOA\_X\Method\82X020822W.M  
 Quant Title : SW846 8260

TIC Library : C:\Database\NIST20.L  
 TIC Integration Parameters: LSCINT.P



Library Search Compound Report

Data Path : Z:\voasrv\HPCHEM1\MSVOA\_X\Data\VX021122\  
Data File : VX027004.D  
Acq On : 12 Feb 2022 05:58  
Operator : JC/MD  
Sample : N1465-09 20X  
Misc : 6.54g/5mL/100uL/5.00mL/MSVOA\_X/MEOH  
ALS Vial : 48 Sample Multiplier: 1

Instrument :  
MSVOA\_X  
ClientSampleId :  
A5-9-9.0

Quant Method : Z:\voasrv\HPCHEM1\MSVOA\_X\Method\82X020822W.M  
Quant Title : SW846 8260

TIC Library : C:\Database\NIST20.L  
TIC Integration Parameters: LSCINT.P

No Library Search Compounds Detected

\*\*\*\*\*

Data Path : Z:\voasrv\HPCHEM1\MSVOA\_X\Data\VX021122\  
Data File : VX027004.D  
Acq On : 12 Feb 2022 05:58  
Operator : JC/MD  
Sample : N1465-09 20X  
Misc : 6.54g/5mL/100uL/5.00mL/MSVOA\_X/MEOH  
ALS Vial : 48 Sample Multiplier: 1

Instrument :  
MSVOA\_X  
ClientSampleId :  
A5-9-9.0

Quant Method : Z:\voasrv\HPCHEM1\MSVOA\_X\Method\82X020822W.M  
Quant Title : SW846 8260

TIC Library : C:\Database\NIST20.L  
TIC Integration Parameters: LSCINT.P

TIC Top Hit name	RT	EstConc	Units	Response	--Internal Standard--			
					#	RT	Resp	Conc

---