

Data Path : Z:\voasrv\HPCHEM1\MSVOA_X\Data\VX021125\
 Data File : VX044894.D
 Acq On : 11 Feb 2025 10:37
 Operator : JC/MD
 Sample : VX0211MBL01
 Misc : 5.00g/10mL/100uL/5.00mL/MSVOA_X/MEOH
 ALS Vial : 3 Sample Multiplier: 1

Instrument :
 MSVOA_X
 ClientSampleId :
 VX0211MBL01

Quant Time: Feb 12 02:37:25 2025
 Quant Method : Z:\voasrv\HPCHEM1\MSVOA_X\Method\82X021025W.M
 Quant Title : SW846 8260
 QLast Update : Tue Feb 11 03:41:08 2025
 Response via : Initial Calibration

Compound	R.T.	QIon	Response	Conc	Units	Dev(Min)

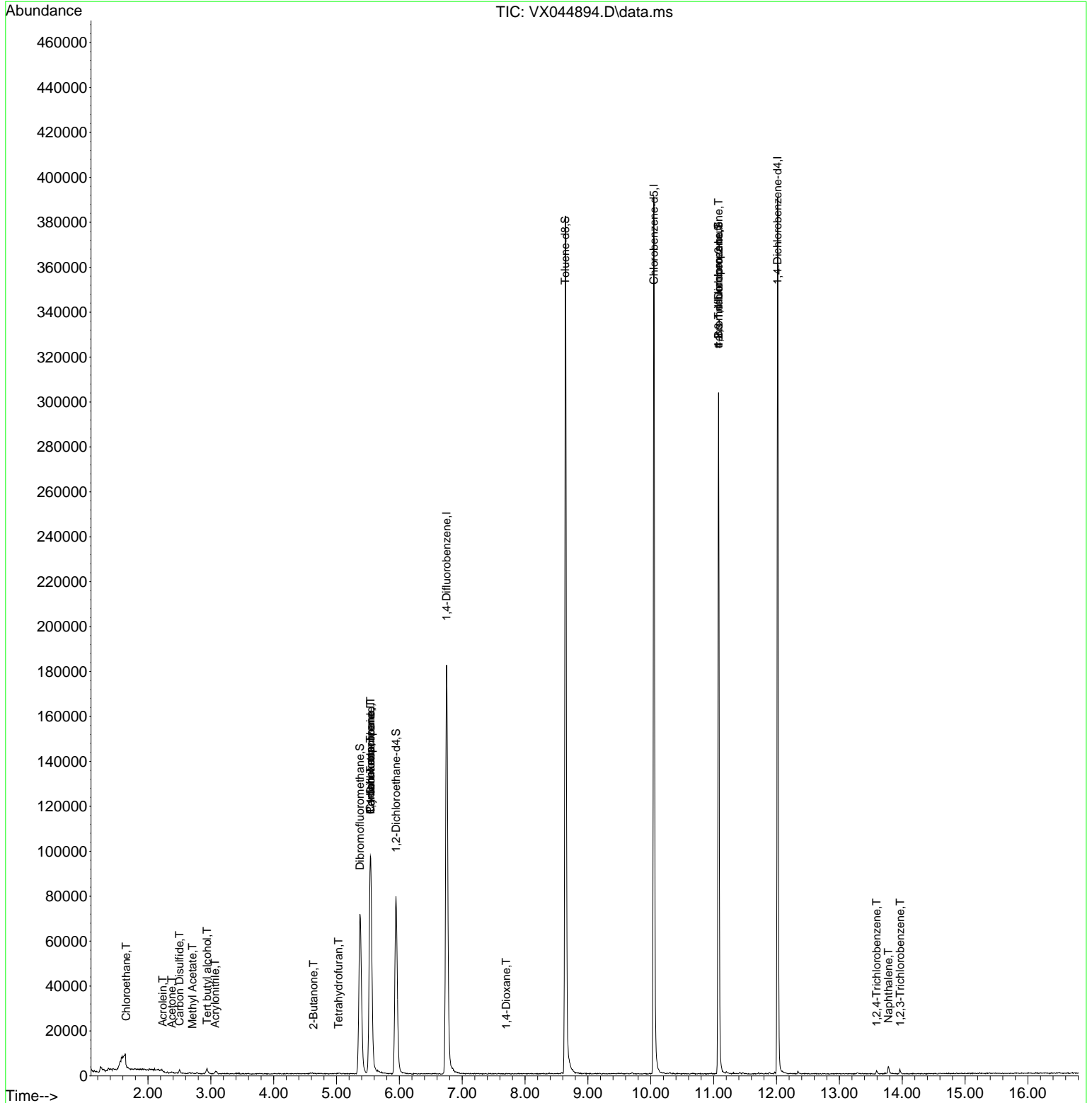
Internal Standards						
1) Pentafluorobenzene	5.544	168	95130	50.000	ug/l	0.00
34) 1,4-Difluorobenzene	6.751	114	194708	50.000	ug/l	0.00
63) Chlorobenzene-d5	10.049	117	173325	50.000	ug/l	0.00
72) 1,4-Dichlorobenzene-d4	12.018	152	75089	50.000	ug/l	0.00
System Monitoring Compounds						
33) 1,2-Dichloroethane-d4	5.946	65	73710	52.932	ug/l	0.00
Spiked Amount	50.000	Range 74 - 125	Recovery	=	105.860%	
35) Dibromofluoromethane	5.373	113	63297	50.001	ug/l	0.00
Spiked Amount	50.000	Range 75 - 124	Recovery	=	100.000%	
50) Toluene-d8	8.641	98	238878	49.902	ug/l	0.00
Spiked Amount	50.000	Range 86 - 113	Recovery	=	99.800%	
62) 4-Bromofluorobenzene	11.079	95	83411	51.686	ug/l	0.00
Spiked Amount	50.000	Range 77 - 121	Recovery	=	103.380%	
Target Compounds						
						Qvalue
6) Chloroethane	1.654	64	222	1.632	ug/l #	42
11) Tert butyl alcohol	2.940	59	1273	4.928	ug/l #	73
13) Acrolein	2.233	56	296	1.111	ug/l	100
15) Acrylonitrile	3.068	53	597	0.866	ug/l #	25
16) Acetone	2.380	43	721	1.288	ug/l #	72
17) Carbon Disulfide	2.501	76	1855	0.552	ug/l #	80
18) Methyl Acetate	2.709	43	409	0.232	ug/l #	52
25) 2-Butanone	4.635	43	298	0.328	ug/l #	48
29) Tetrahydrofuran	5.031	42	313	0.519	ug/l #	33
31) Cyclohexane	5.537	56	2313	1.070	ug/l #	9
36) 1,1-Dichloropropene	5.544	75	8302	4.546	ug/l #	50
38) Carbon Tetrachloride	5.544	117	10147	5.669	ug/l #	15
49) 1,4-Dioxane	7.702	88	42	1.266	ug/l #	62
76) 1,2,3-Trichloropropane	11.079	75	43801	26.310	ug/l #	34
81) trans-1,4-Dichloro-2-b...	11.079	75	43801	67.678	ug/l #	11
93) 1,2,4-Trichlorobenzene	13.591	180	609	0.406	ug/l	88
95) Naphthalene	13.780	128	3633	0.670	ug/l #	91
96) 1,2,3-Trichlorobenzene	13.969	180	676	0.448	ug/l	94

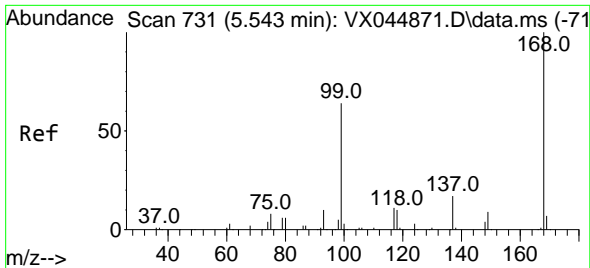
(#) = qualifier out of range (m) = manual integration (+) = signals summed

Data Path : Z:\voasrv\HPCHEM1\MSVOA_X\Data\VX021125\
 Data File : VX044894.D
 Acq On : 11 Feb 2025 10:37
 Operator : JC/MD
 Sample : VX0211MBL01
 Misc : 5.00g/10mL/100uL/5.00mL/MSVOA_X/MEOH
 ALS Vial : 3 Sample Multiplier: 1

Instrument :
 MSVOA_X
 ClientSampleId :
 VX0211MBL01

Quant Time: Feb 12 02:37:25 2025
 Quant Method : Z:\voasrv\HPCHEM1\MSVOA_X\Method\82X021025W.M
 Quant Title : SW846 8260
 QLast Update : Tue Feb 11 03:41:08 2025
 Response via : Initial Calibration

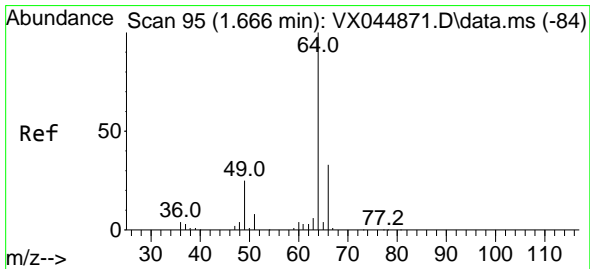
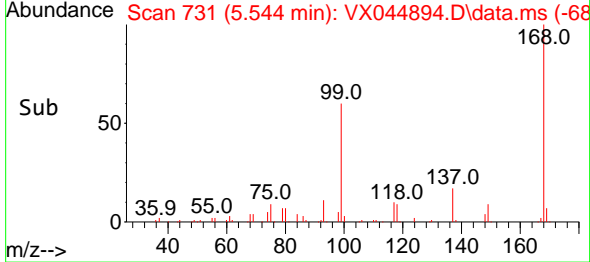
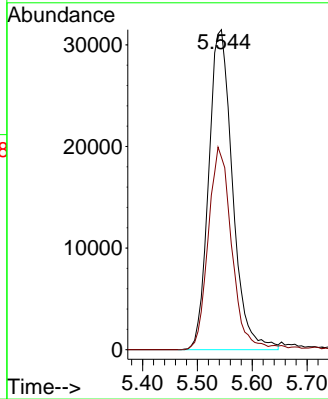
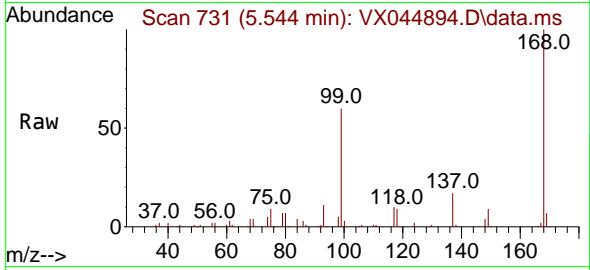




#1
 Pentafluorobenzene
 Concen: 50.000 ug/l
 RT: 5.544 min Scan# 71
 Delta R.T. 0.001 min
 Lab File: VX044894.D
 Acq: 11 Feb 2025 10:37

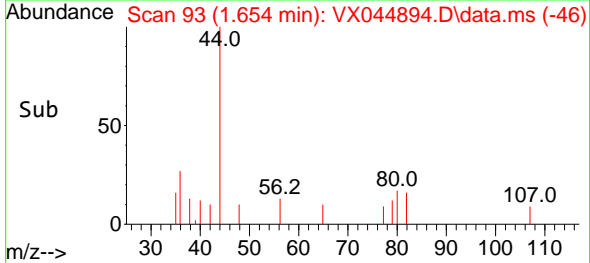
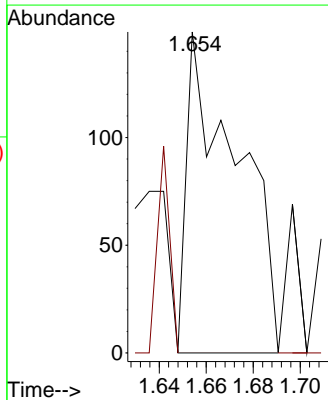
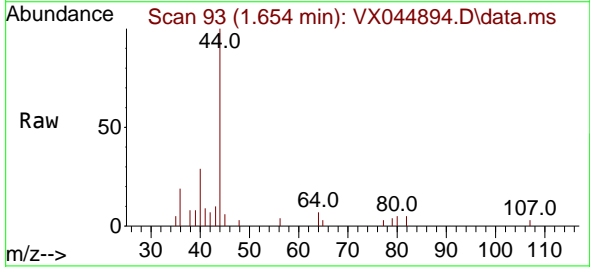
Instrument :
 MSVOA_X
 ClientSampleId :
 VX0211MBL01

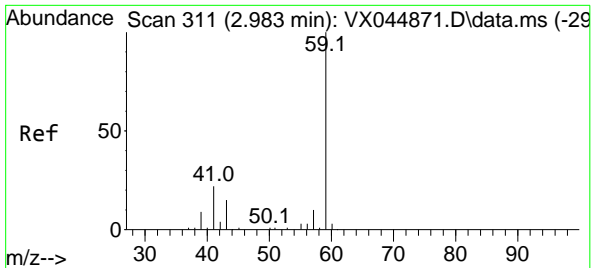
Tgt Ion:168 Resp: 95130
 Ion Ratio Lower Upper
 168 100
 99 60.2 51.2 76.8



#6
 Chloroethane
 Concen: 1.632 ug/l
 RT: 1.654 min Scan# 93
 Delta R.T. -0.012 min
 Lab File: VX044894.D
 Acq: 11 Feb 2025 10:37

Tgt Ion: 64 Resp: 222
 Ion Ratio Lower Upper
 64 100
 66 0.0 25.9 38.9#

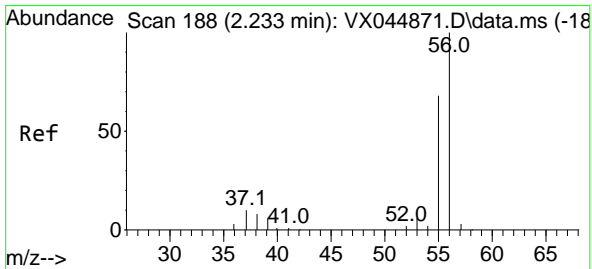
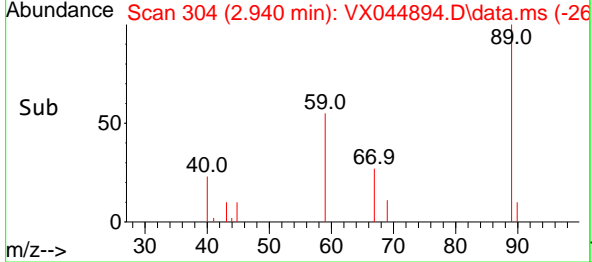
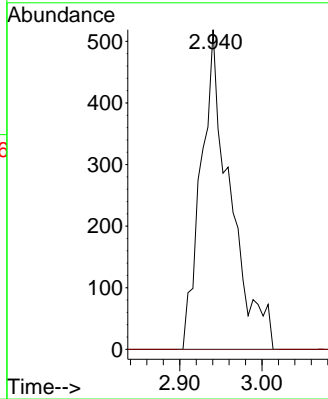
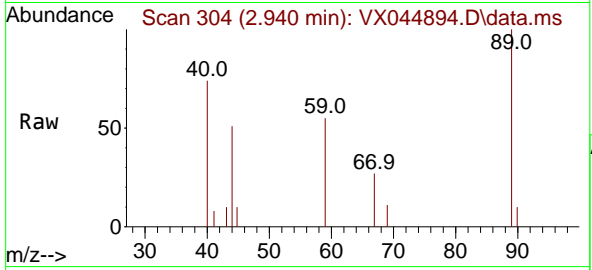




#11
 Tert butyl alcohol
 Concen: 4.928 ug/l
 RT: 2.940 min Scan# 304
 Delta R.T. -0.042 min
 Lab File: VX044894.D
 Acq: 11 Feb 2025 10:37

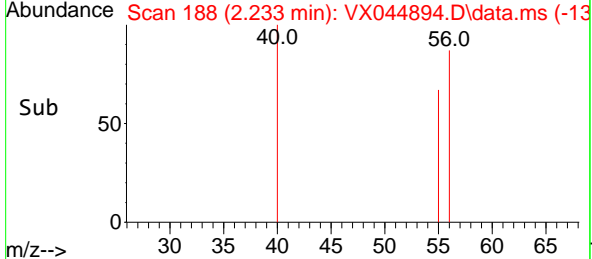
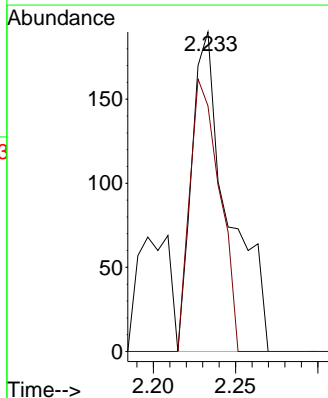
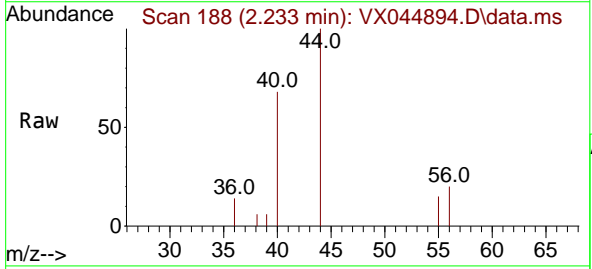
Instrument : MSVOA_X
 ClientSampleId : VX0211MBL01

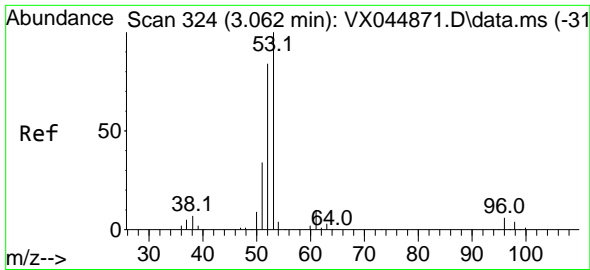
Tgt Ion: 59 Resp: 1273
 Ion Ratio Lower Upper
 59 100
 57 0.0 8.1 12.1#



#13
 Acrolein
 Concen: 1.111 ug/l
 RT: 2.233 min Scan# 188
 Delta R.T. 0.000 min
 Lab File: VX044894.D
 Acq: 11 Feb 2025 10:37

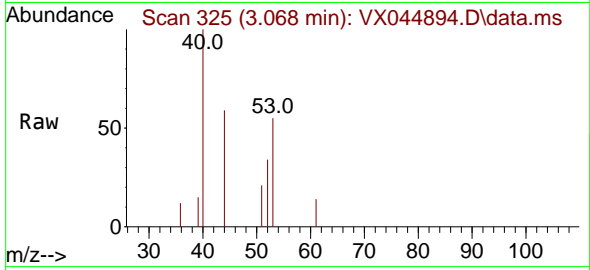
Tgt Ion: 56 Resp: 296
 Ion Ratio Lower Upper
 56 100
 55 69.3 55.7 83.5



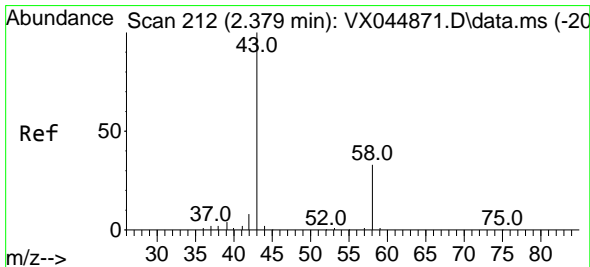
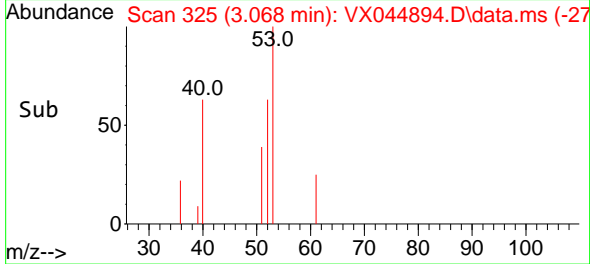
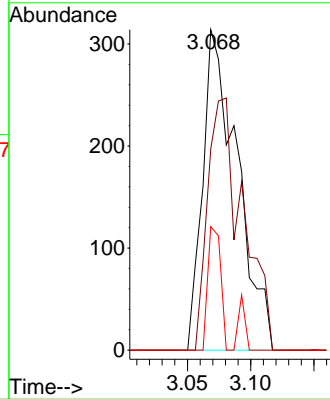


#15
 Acrylonitrile
 Concen: 0.866 ug/l
 RT: 3.068 min Scan# 31
 Delta R.T. 0.006 min
 Lab File: VX044894.D
 Acq: 11 Feb 2025 10:37

Instrument :
 MSVOA_X
 ClientSampleId :
 VX0211MBL01

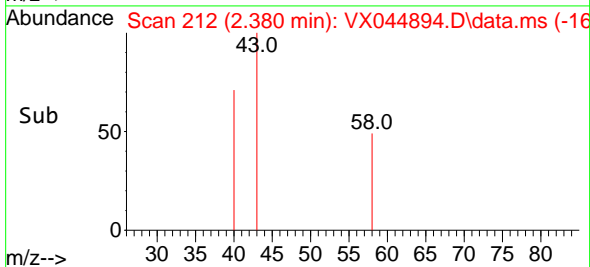
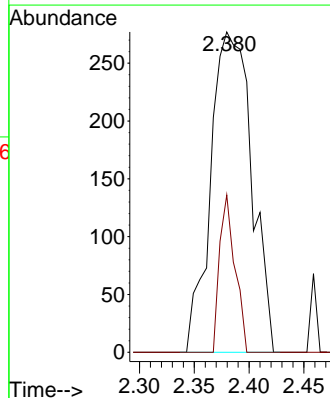
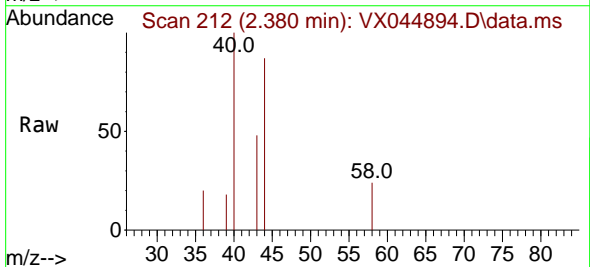


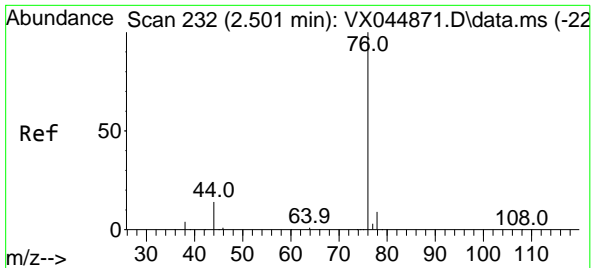
Tgt Ion: 53 Resp: 597
 Ion Ratio Lower Upper
 53 100
 52 0.0 65.0 97.6#
 51 14.2 28.0 42.0#



#16
 Acetone
 Concen: 1.288 ug/l
 RT: 2.380 min Scan# 212
 Delta R.T. 0.000 min
 Lab File: VX044894.D
 Acq: 11 Feb 2025 10:37

Tgt Ion: 43 Resp: 721
 Ion Ratio Lower Upper
 43 100
 58 49.1 26.5 39.7#

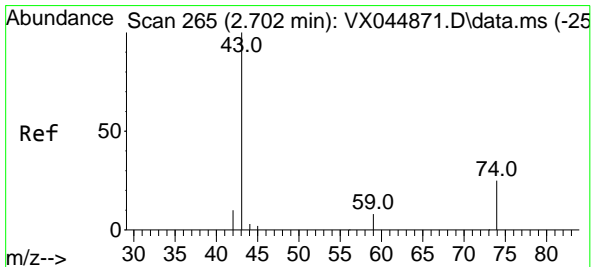
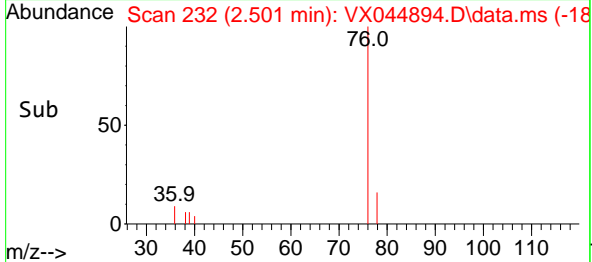
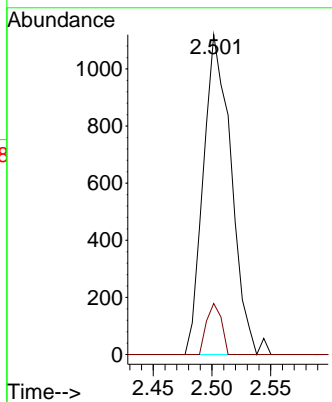
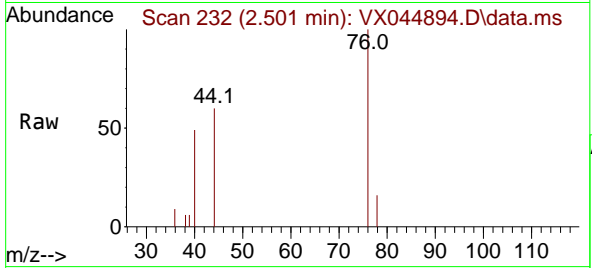




#17
 Carbon Disulfide
 Concen: 0.552 ug/l
 RT: 2.501 min Scan# 211
 Delta R.T. 0.000 min
 Lab File: VX044894.D
 Acq: 11 Feb 2025 10:37

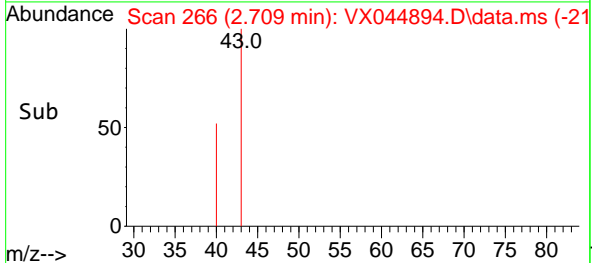
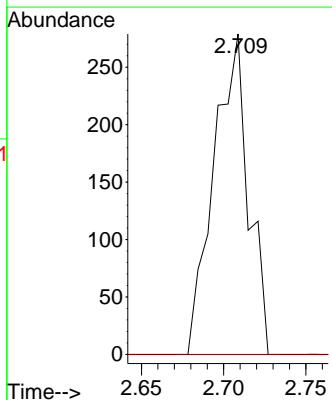
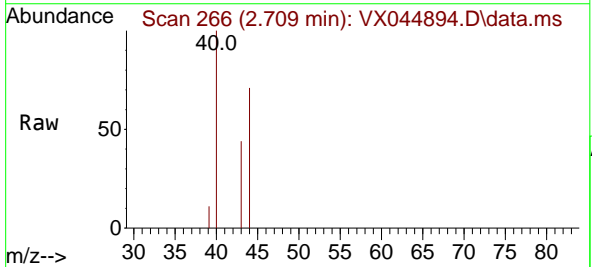
Instrument : MSVOA_X
 ClientSampleId : VX0211MBL01

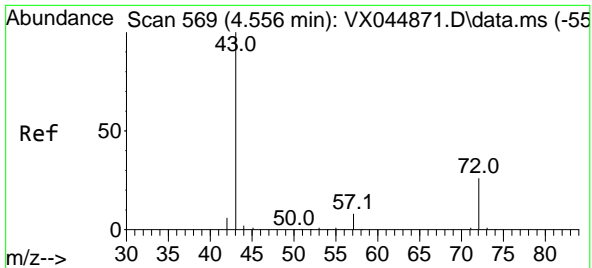
Tgt Ion: 76 Resp: 1855
 Ion Ratio Lower Upper
 76 100
 78 16.0 7.0 10.4#



#18
 Methyl Acetate
 Concen: 0.232 ug/l
 RT: 2.709 min Scan# 266
 Delta R.T. 0.006 min
 Lab File: VX044894.D
 Acq: 11 Feb 2025 10:37

Tgt Ion: 43 Resp: 409
 Ion Ratio Lower Upper
 43 100
 74 0.0 18.9 28.3#

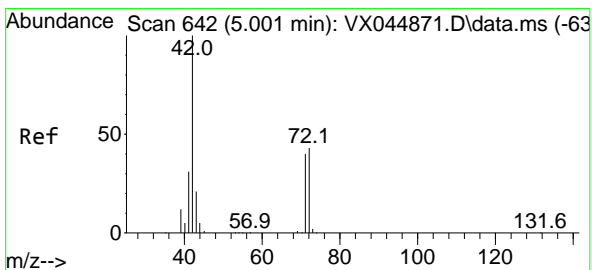
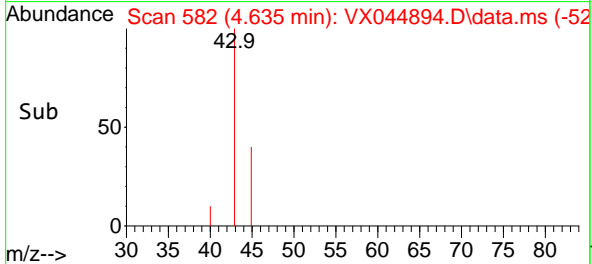
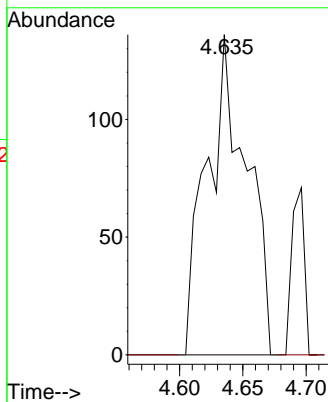
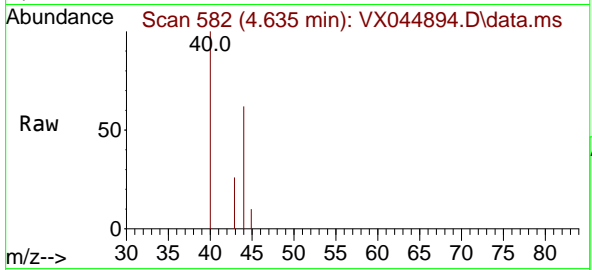




#25
 2-Butanone
 Concen: 0.328 ug/l
 RT: 4.635 min Scan# 582
 Delta R.T. 0.079 min
 Lab File: VX044894.D
 Acq: 11 Feb 2025 10:37

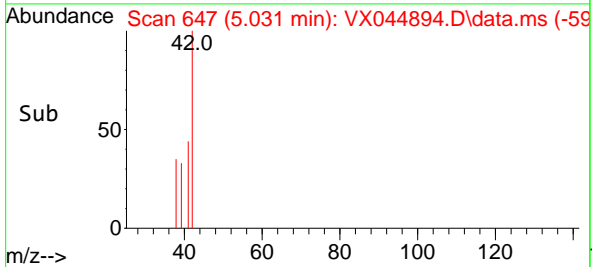
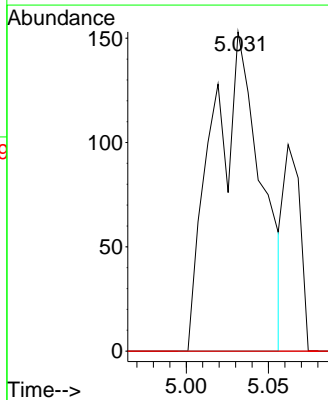
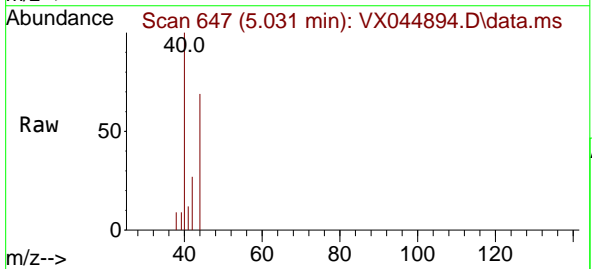
Instrument : MSVOA_X
 ClientSampleId : VX0211MBL01

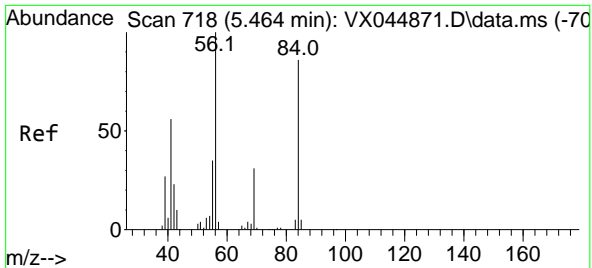
Tgt Ion: 43 Resp: 298
 Ion Ratio Lower Upper
 43 100
 72 0.0 21.2 31.8#



#29
 Tetrahydrofuran
 Concen: 0.519 ug/l
 RT: 5.031 min Scan# 647
 Delta R.T. 0.031 min
 Lab File: VX044894.D
 Acq: 11 Feb 2025 10:37

Tgt Ion: 42 Resp: 313
 Ion Ratio Lower Upper
 42 100
 72 0.0 35.0 52.4#
 71 0.0 32.6 48.8#

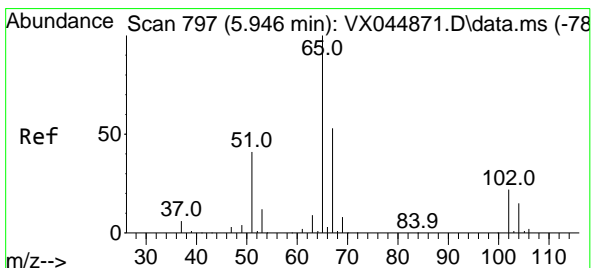
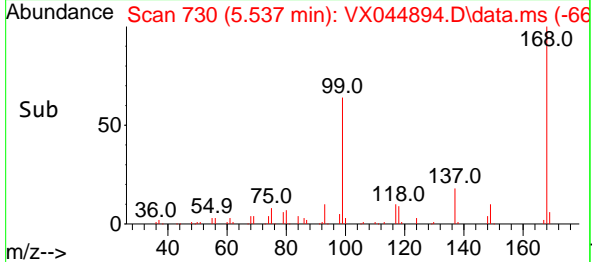
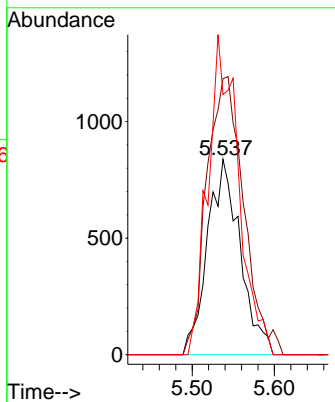
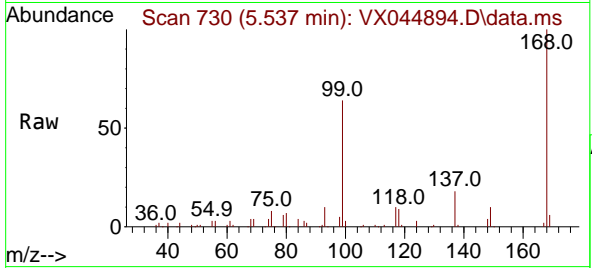




#31
 Cyclohexane
 Concen: 1.070 ug/l
 RT: 5.537 min Scan# 718
 Delta R.T. 0.073 min
 Lab File: VX044894.D
 Acq: 11 Feb 2025 10:37

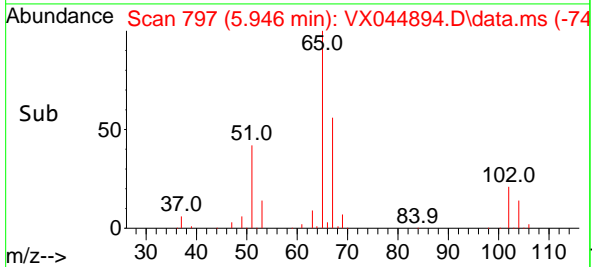
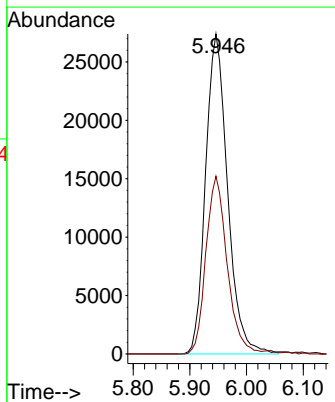
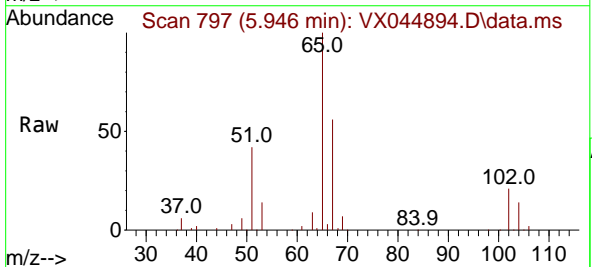
Instrument : MSVOA_X
 ClientSampleId : VX0211MBL01

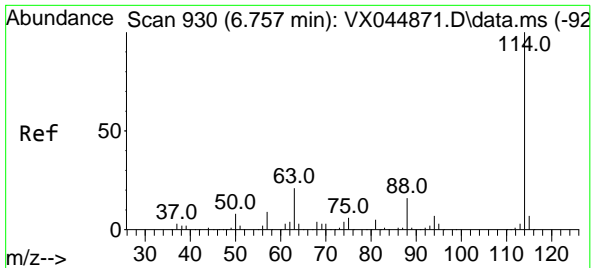
Tgt Ion	Resp	Lower	Upper
56	100		
69	141.3	24.4	36.6#
84	133.2	69.0	103.6#



#33
 1,2-Dichloroethane-d4
 Concen: 52.932 ug/l
 RT: 5.946 min Scan# 797
 Delta R.T. 0.000 min
 Lab File: VX044894.D
 Acq: 11 Feb 2025 10:37

Tgt Ion	Resp	Lower	Upper
65	100		
67	54.1	0.0	108.2



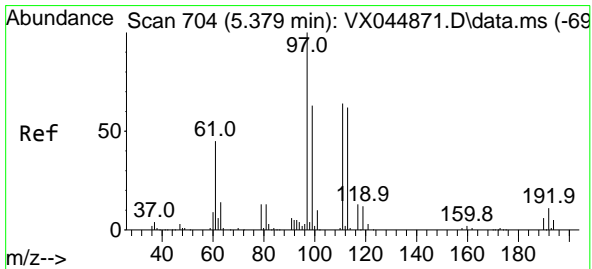
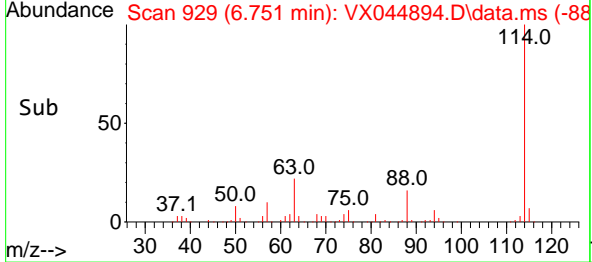
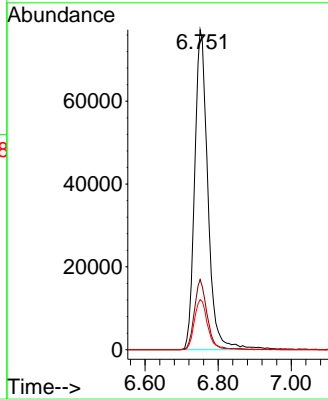
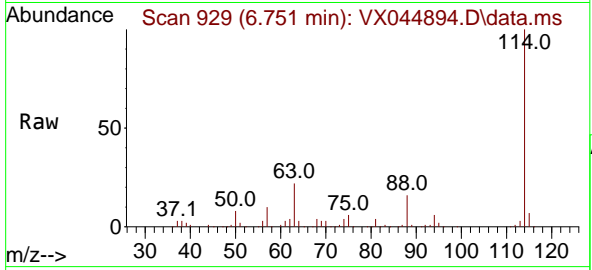


#34
 1,4-Difluorobenzene
 Concen: 50.000 ug/l
 RT: 6.751 min Scan# 91
 Delta R.T. -0.006 min
 Lab File: VX044894.D
 Acq: 11 Feb 2025 10:37

Instrument :
 MSVOA_X
 ClientSampleId :
 VX0211MBL01

Tgt Ion:114 Resp: 194708

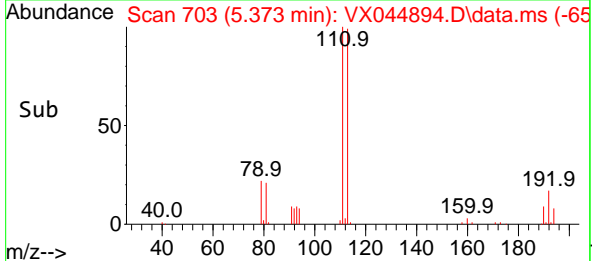
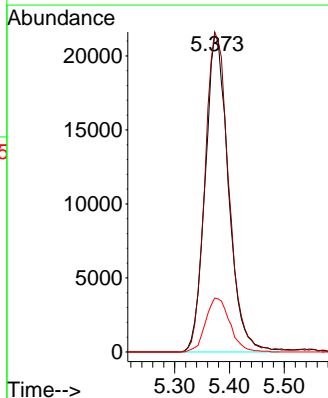
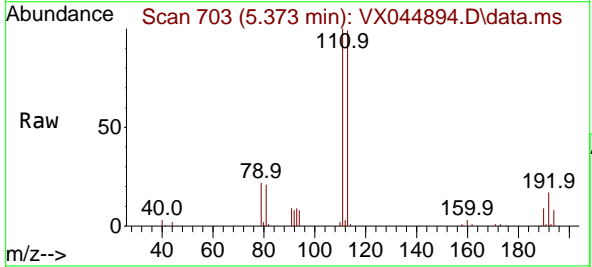
Ion	Ratio	Lower	Upper
114	100		
63	21.9	0.0	42.4
88	15.6	0.0	31.4

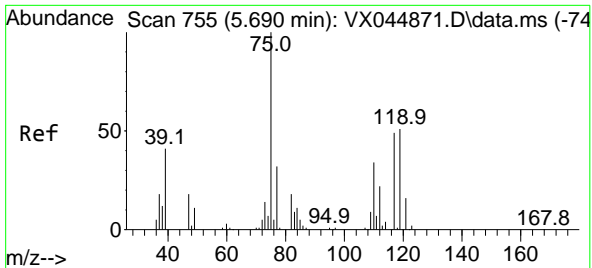


#35
 Dibromofluoromethane
 Concen: 50.001 ug/l
 RT: 5.373 min Scan# 703
 Delta R.T. -0.006 min
 Lab File: VX044894.D
 Acq: 11 Feb 2025 10:37

Tgt Ion:113 Resp: 63297

Ion	Ratio	Lower	Upper
113	100		
111	103.1	83.5	125.3
192	17.6	14.4	21.6

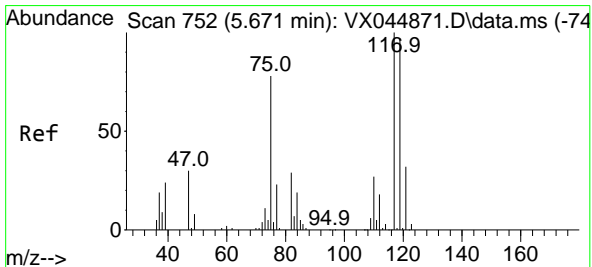
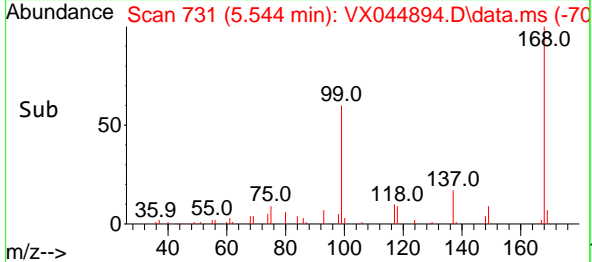
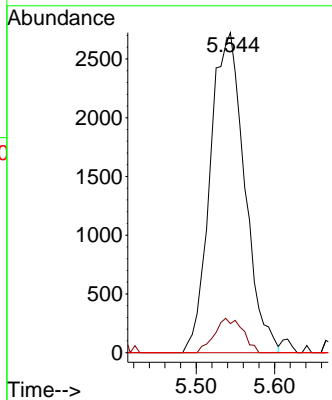
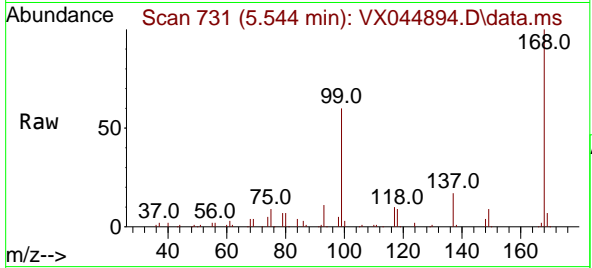




#36
 1,1-Dichloropropene
 Concen: 4.546 ug/l
 RT: 5.544 min Scan# 711
 Delta R.T. -0.146 min
 Lab File: VX044894.D
 Acq: 11 Feb 2025 10:37

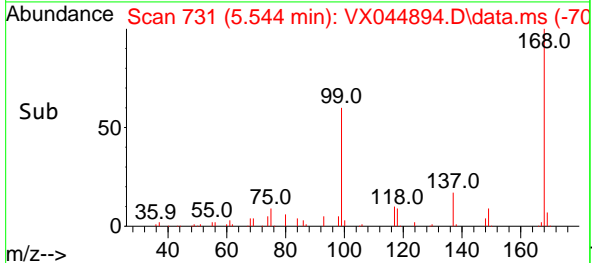
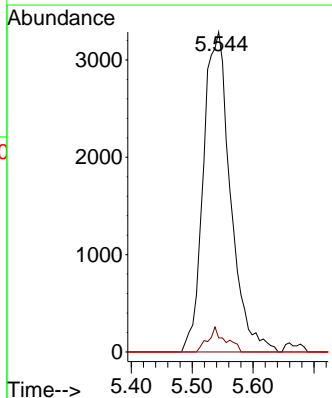
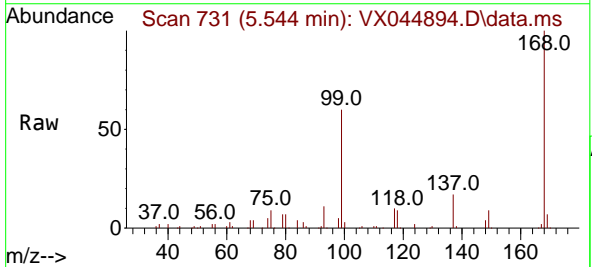
Instrument : MSVOA_X
 ClientSampleId : VX0211MBL01

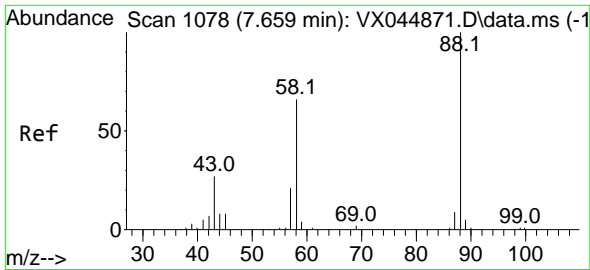
Tgt Ion	Resp	Lower	Upper
75	8302		
75	100		
110	8.9	17.2	51.6#
77	0.0	24.6	37.0#



#38
 Carbon Tetrachloride
 Concen: 5.669 ug/l
 RT: 5.544 min Scan# 731
 Delta R.T. -0.128 min
 Lab File: VX044894.D
 Acq: 11 Feb 2025 10:37

Tgt Ion	Resp	Lower	Upper
117	10147		
117	100		
119	4.4	77.5	116.3#
121	0.0	25.6	38.4#

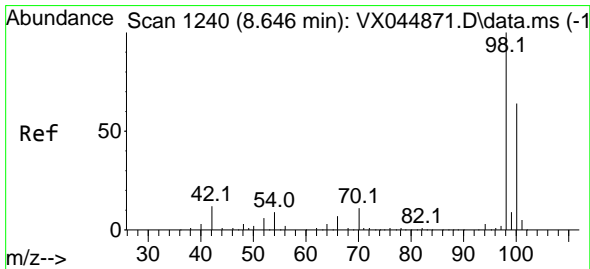
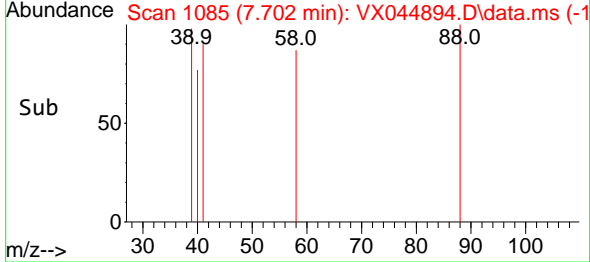
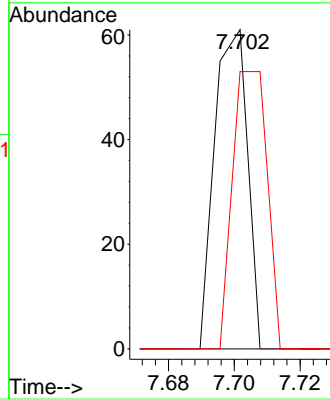
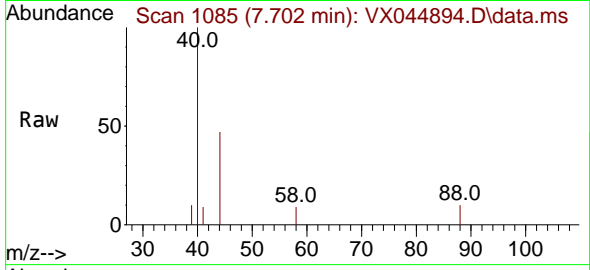




#49
 1,4-Dioxane
 Concen: 1.266 ug/l
 RT: 7.702 min Scan# 1085
 Delta R.T. 0.043 min
 Lab File: VX044894.D
 Acq: 11 Feb 2025 10:37

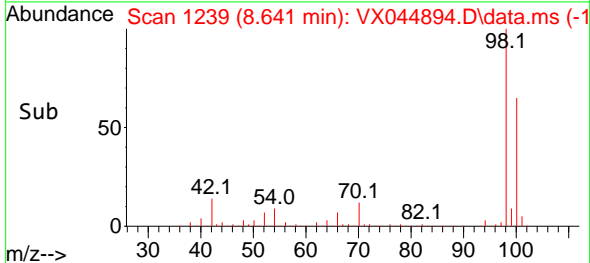
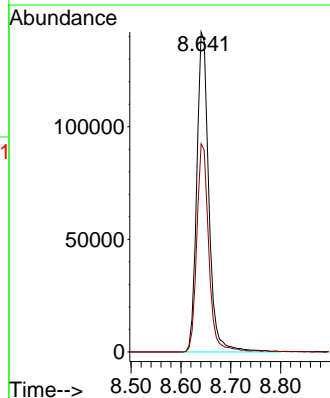
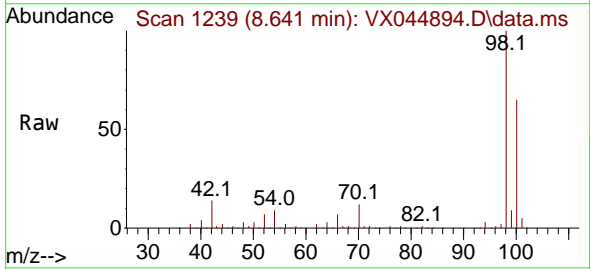
Instrument :
 MSVOA_X
 ClientSampleId :
 VX0211MBL01

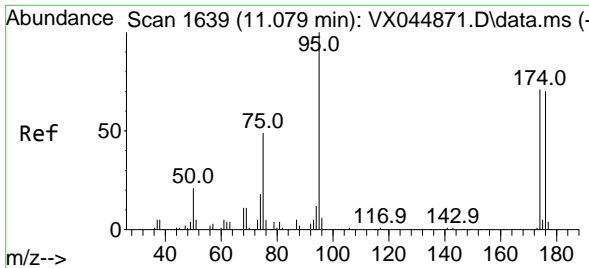
Tgt Ion	Resp	Lower	Upper
88	100		
43	0.0	26.6	39.8#
58	92.9	55.9	83.9#



#50
 Toluene-d8
 Concen: 49.902 ug/l
 RT: 8.641 min Scan# 1239
 Delta R.T. -0.006 min
 Lab File: VX044894.D
 Acq: 11 Feb 2025 10:37

Tgt Ion	Resp	Lower	Upper
98	100		
100	64.4	52.7	79.1



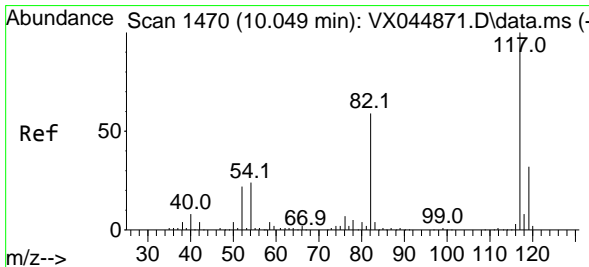
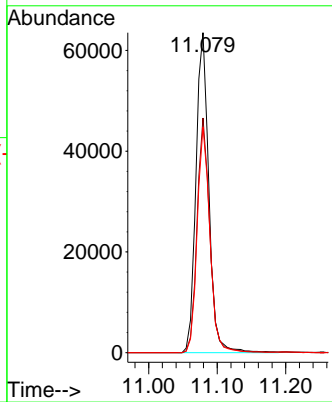
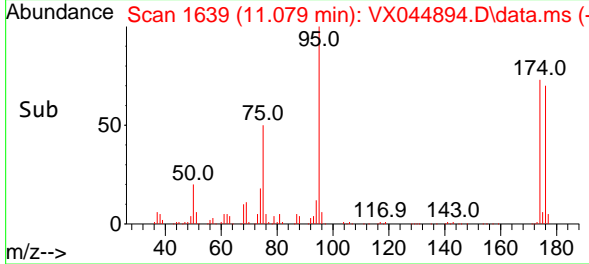
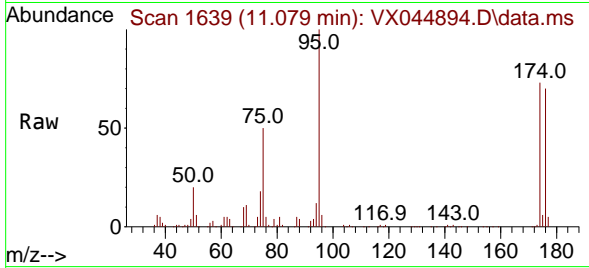


#62
 4-Bromofluorobenzene
 Concen: 51.686 ug/l
 RT: 11.079 min Scan# 1639
 Delta R.T. 0.000 min
 Lab File: VX044894.D
 Acq: 11 Feb 2025 10:37

Instrument : MSVOA_X
 ClientSampleId : VX0211MBL01

Tgt Ion: 95 Resp: 83411

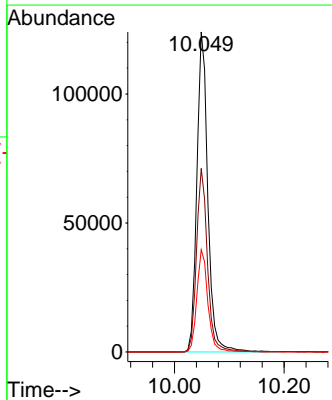
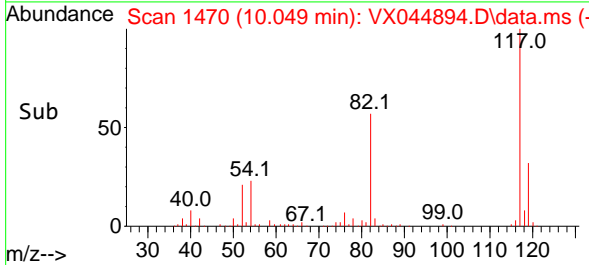
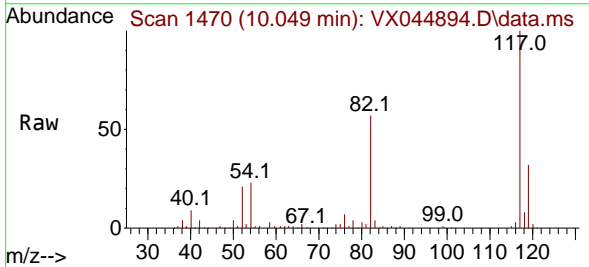
Ion	Ratio	Lower	Upper
95	100		
174	72.6	0.0	142.6
176	69.5	0.0	141.6

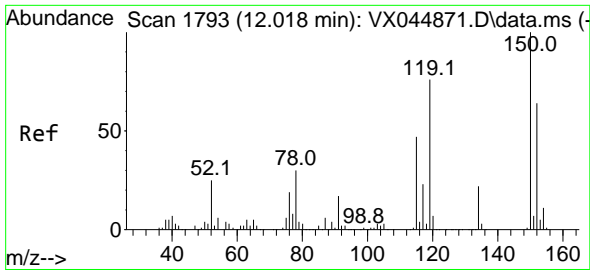


#63
 Chlorobenzene-d5
 Concen: 50.000 ug/l
 RT: 10.049 min Scan# 1470
 Delta R.T. 0.000 min
 Lab File: VX044894.D
 Acq: 11 Feb 2025 10:37

Tgt Ion: 117 Resp: 173325

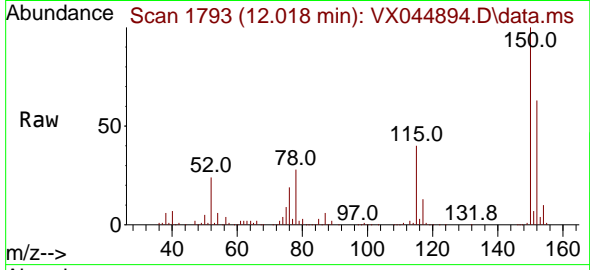
Ion	Ratio	Lower	Upper
117	100		
82	57.3	47.5	71.3
119	31.9	25.4	38.0



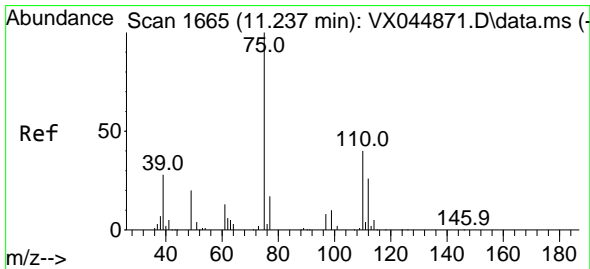
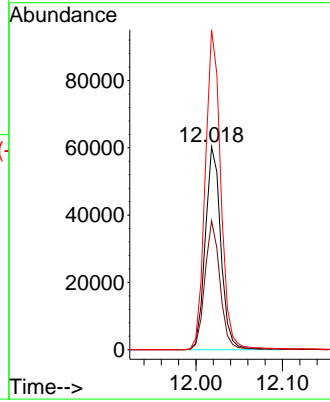
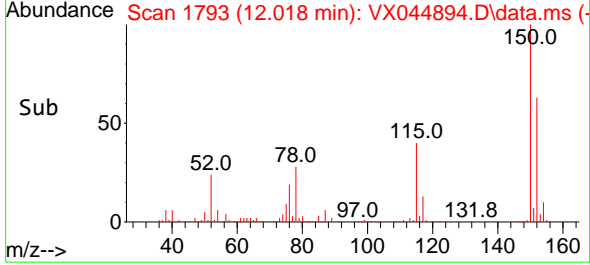


#72
 1,4-Dichlorobenzene-d4
 Concen: 50.000 ug/l
 RT: 12.018 min Scan# 11
 Delta R.T. 0.000 min
 Lab File: VX044894.D
 Acq: 11 Feb 2025 10:37

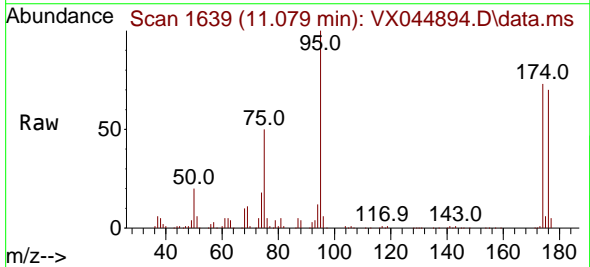
Instrument :
 MSVOA_X
 ClientSampleId :
 VX0211MBL01



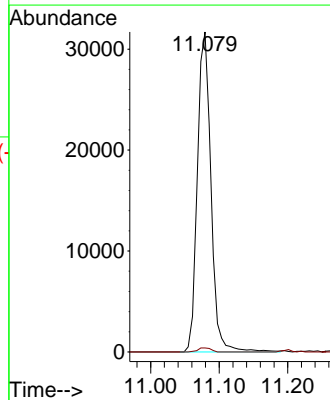
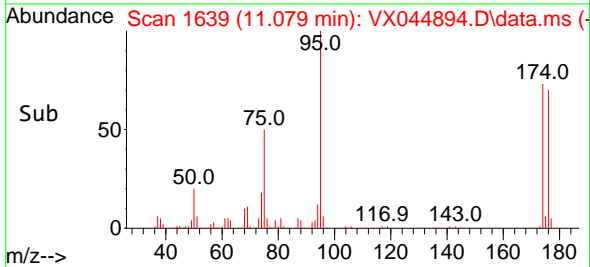
Tgt Ion:152 Resp: 75089
 Ion Ratio Lower Upper
 152 100
 115 61.9 43.4 130.1
 150 157.9 0.0 350.4

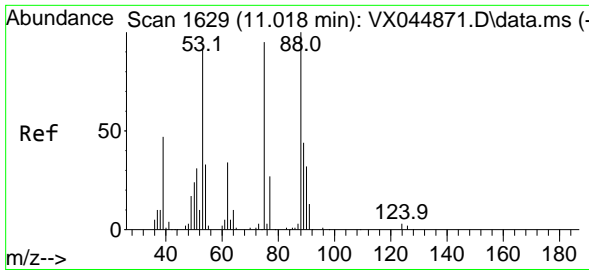


#76
 1,2,3-Trichloropropane
 Concen: 26.310 ug/l
 RT: 11.079 min Scan# 1639
 Delta R.T. -0.158 min
 Lab File: VX044894.D
 Acq: 11 Feb 2025 10:37



Tgt Ion: 75 Resp: 43801
 Ion Ratio Lower Upper
 75 100
 77 1.2 21.9 65.7#



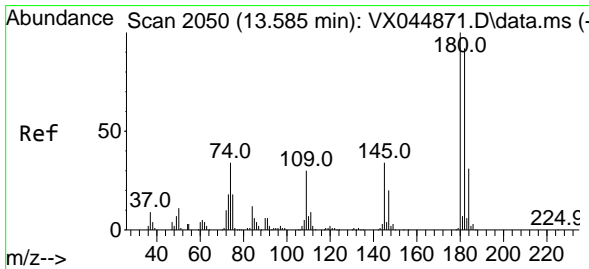
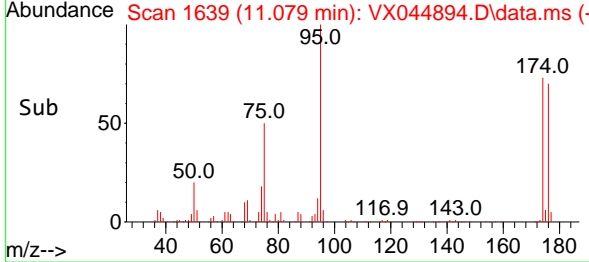
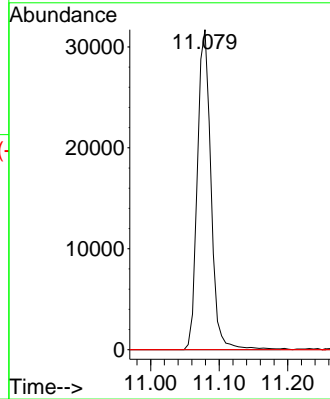
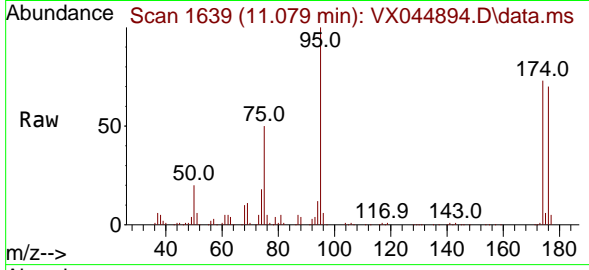


#81
 trans-1,4-Dichloro-2-butene
 Concen: 67.678 ug/l
 RT: 11.079 min Scan# 1639
 Delta R.T. 0.061 min
 Lab File: VX044894.D
 Acq: 11 Feb 2025 10:37

Instrument :
 MSVOA_X
 ClientSampleId :
 VX0211MBL01

Tgt Ion: 75 Resp: 43801

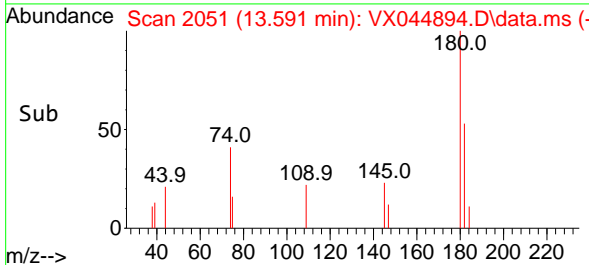
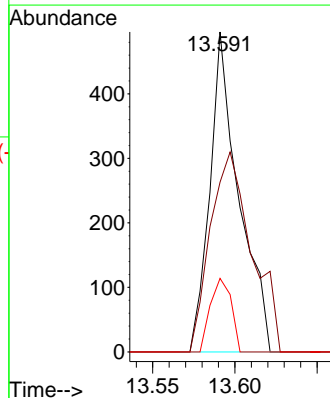
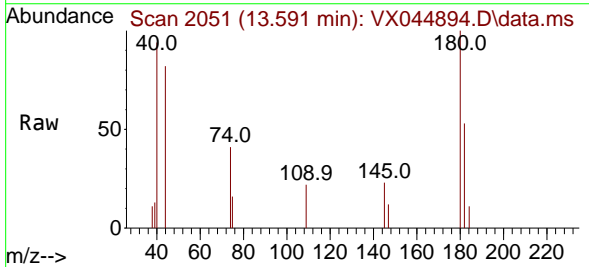
Ion	Ratio	Lower	Upper
75	100		
53	0.0	78.0	117.0#
89	0.0	36.6	54.8#

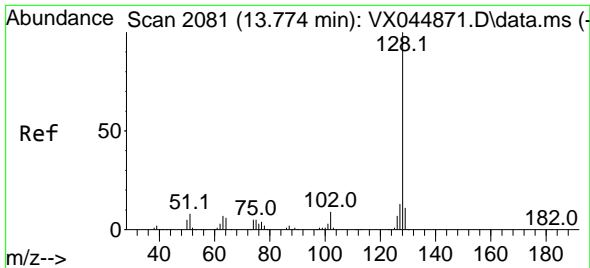


#93
 1,2,4-Trichlorobenzene
 Concen: 0.406 ug/l
 RT: 13.591 min Scan# 2051
 Delta R.T. 0.006 min
 Lab File: VX044894.D
 Acq: 11 Feb 2025 10:37

Tgt Ion: 180 Resp: 609

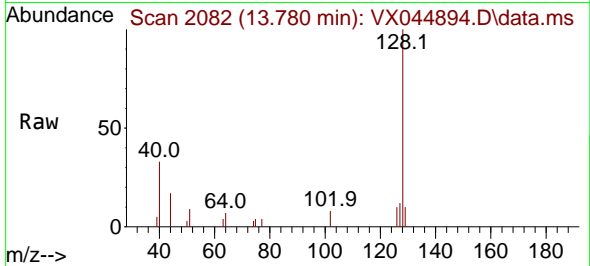
Ion	Ratio	Lower	Upper
180	100		
182	89.0	47.6	142.8
145	16.6	16.4	49.1



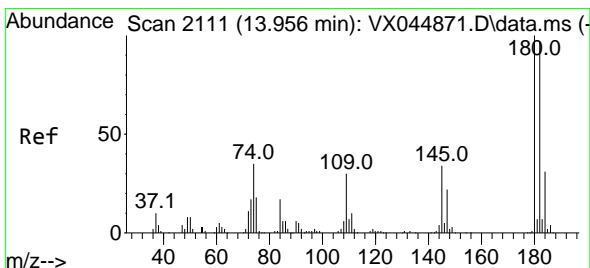
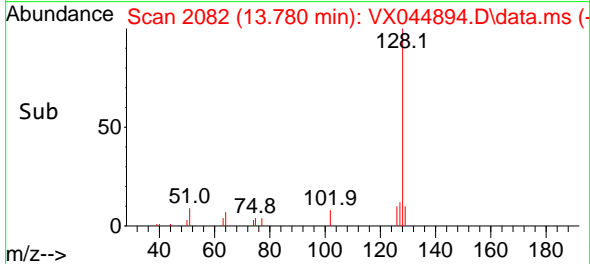
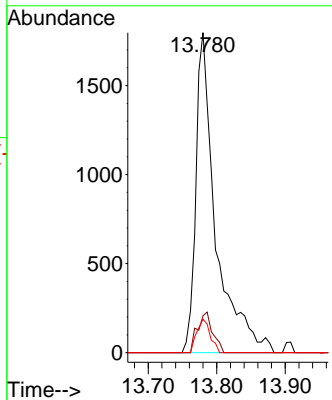


#95
 Naphthalene
 Concen: 0.670 ug/l
 RT: 13.780 min Scan# 2081
 Delta R.T. 0.006 min
 Lab File: VX044894.D
 Acq: 11 Feb 2025 10:37

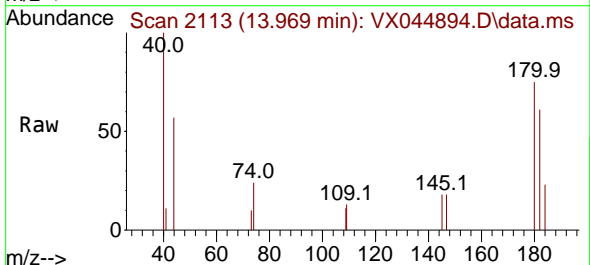
Instrument :
 MSVOA_X
 ClientSampleId :
 VX0211MBL01



Tgt Ion:128 Resp: 3633
 Ion Ratio Lower Upper
 128 100
 127 9.7 10.1 15.1#
 129 7.0 8.9 13.3#



#96
 1,2,3-Trichlorobenzene
 Concen: 0.448 ug/l
 RT: 13.969 min Scan# 2113
 Delta R.T. 0.012 min
 Lab File: VX044894.D
 Acq: 11 Feb 2025 10:37



Tgt Ion:180 Resp: 676
 Ion Ratio Lower Upper
 180 100
 182 92.6 47.9 143.6
 145 26.5 17.1 51.3

