

Data Path : Z:\VOASRV\HPCHEM1\MSVOA X\DATA\VX021220\
 Data File : VX014933.D
 Acq On : 12 Feb 2020 18:02
 Operator : JC/SP
 Sample : L1432-08
 Misc : 5.0mL/MSVOA X/WATER
 ALS Vial : 19 Sample Multiplier: 1

Instrument :
 MSVOA_X
 ClientSampleId :
 OD-COMP

Integration Parameters: RTEINT.P

Integrator: RTE
 Smoothing : ON
 Sampling : 1
 Start Thrs: 0.2
 Stop Thrs : 0

Filtering: 5
 Min Area: 3 % of largest Peak
 Max Peaks: 100
 Peak Location: TOP

If leading or trailing edge < 100 prefer < Baseline drop else tangent >
 Peak separation: 5

Method : Z:\VOASRV\HPCHEM1\MSVOA_X\METHOD\82X021020W.M
 Title : SW846 8260

Signal : TIC

peak #	R.T. min	first scan	max scan	last scan	PK TY	peak height	corr. area	corr. % max.	% of total
1	1.070	26	30	42	rBV	935729	1165165	1.42%	0.199%
2	1.460	92	94	126	rBV	39305165	82121550	100.00%	13.997%
3	2.149	192	207	210	rBV	16486531	45935604	55.94%	7.830%
4	2.344	233	239	247	rBV	1873869	2938589	3.58%	0.501%
5	2.436	247	254	272	rVB	8498617	14215773	17.31%	2.423%
6	2.594	272	280	292	rVB	2466531	4448461	5.42%	0.758%
7	2.759	302	307	318	rVB	560782	996277	1.21%	0.170%
8	3.399	403	412	425	rBV	577972	1324446	1.61%	0.226%
9	3.941	491	501	515	rBV	683384	1823665	2.22%	0.311%
10	4.325	550	564	582	rBV	4484807	12015730	14.63%	2.048%
11	4.813	634	644	656	rBV	470229	1343936	1.64%	0.229%
12	5.655	769	782	799	rVB	443437	1233644	1.50%	0.210%
13	5.923	813	826	839	rBV	2801692	7353247	8.95%	1.253%
14	6.209	864	873	889	rVB	534009	1453574	1.77%	0.248%
15	6.849	970	978	990	rBV	702457	1614689	1.97%	0.275%
16	7.294	1041	1051	1069	rBV	3377308	6963131	8.48%	1.187%
17	7.648	1101	1109	1118	rBV	589475	1078091	1.31%	0.184%
18	8.636	1262	1271	1278	rBV	3780040	6126167	7.46%	1.044%
19	8.709	1278	1283	1288	rVV	1462535	2355946	2.87%	0.402%
20	8.782	1288	1295	1308	rVB	19036263	29127525	35.47%	4.965%
21	9.008	1327	1332	1340	rVB	5730417	8407781	10.24%	1.433%
22	9.575	1415	1425	1430	rBV	5794093	7653448	9.32%	1.305%
23	10.111	1508	1513	1519	rVB2	1533591	2245208	2.73%	0.383%
24	10.245	1531	1535	1540	rVB	1664912	2099312	2.56%	0.358%
25	10.355	1540	1553	1558	rBV	5788394	8122115	9.89%	1.384%
26	10.410	1558	1562	1567	rVB	718859	840918	1.02%	0.143%
27	10.629	1593	1598	1604	rBV	7721285	9889649	12.04%	1.686%
28	10.690	1604	1608	1618	rVB	2433221	3888873	4.74%	0.663%
29	10.904	1635	1643	1648	rBV3	921939	1436574	1.75%	0.245%
30	11.001	1654	1659	1664	rBV2	581798	831264	1.01%	0.142%
31	11.135	1675	1681	1691	rVB2	1742111	3028844	3.69%	0.516%
32	11.428	1725	1729	1734	rBV	1323792	2127303	2.59%	0.363%
33	11.525	1739	1745	1749	rVB2	2990537	3990191	4.86%	0.680%
34	11.666	1763	1768	1771	rBV	879500	1433732	1.75%	0.244%

Data Path : Z:\VOASRV\HPCHEM1\MSVOA X\DATA\VX021220\
 Data File : VX014933.D
 Acq On : 12 Feb 2020 18:02
 Operator : JC/SP
 Sample : L1432-08
 Misc : 5.0mL/MSVOA X/WATER
 ALS Vial : 19 Sample Multiplier: 1

Instrument :
 MSVOA_X
 ClientSampleId :
 OD-COMP

Integration Parameters: RTEINT.P

Integrator: RTE
 Smoothing : ON
 Sampling : 1
 Start Thrs: 0.2
 Stop Thrs : 0

Filtering: 5
 Min Area: 3 % of largest Peak
 Max Peaks: 100
 Peak Location: TOP

If leading or trailing edge < 100 prefer < Baseline drop else tangent >
 Peak separation: 5

Method : Z:\VOASRV\HPCHEM1\MSVOA_X\METHOD\82X021020W.M
 Title : SW846 8260

35	11.702	1771	1774	1777	rVV	1210913	1321840	1.61%	0.225%
36	11.763	1781	1784	1787	rVV	1265824	1341690	1.63%	0.229%
37	11.800	1787	1790	1800	rVB	2531778	3645416	4.44%	0.621%
38	11.940	1807	1813	1816	rBV2	762516	1046476	1.27%	0.178%
39	11.977	1816	1819	1824	rBV2	1868325	2856732	3.48%	0.487%
40	12.074	1829	1835	1840	rVV4	1847754	3876885	4.72%	0.661%
41	12.147	1840	1847	1851	rVV3	1733752	3543997	4.32%	0.604%
42	12.220	1856	1859	1862	rVB	953865	979800	1.19%	0.167%
43	12.269	1862	1867	1869	rBV	3886282	4748980	5.78%	0.809%
44	12.294	1869	1871	1873	rVV	1172251	1379958	1.68%	0.235%
45	12.318	1873	1875	1879	rVB	932855	1008556	1.23%	0.172%
46	12.367	1879	1883	1889	rVB3	2038642	3536213	4.31%	0.603%
47	12.470	1889	1900	1904	rBV	9189566	11993817	14.60%	2.044%
48	12.513	1904	1907	1913	rVB3	1201060	1997032	2.43%	0.340%
49	12.586	1913	1919	1920	rBV2	1084204	1503533	1.83%	0.256%
50	12.605	1920	1922	1923	rVV	1100662	1077314	1.31%	0.184%
51	12.635	1923	1927	1934	rVV2	14902486	18152270	22.10%	3.094%
52	12.739	1940	1944	1947	rBV3	1182096	2193266	2.67%	0.374%
53	12.775	1947	1950	1954	rVB3	1029636	1678190	2.04%	0.286%
54	12.873	1959	1966	1972	rVB5	2104690	3062306	3.73%	0.522%
55	12.940	1972	1977	1984	rBV5	2130253	5460960	6.65%	0.931%
56	12.995	1984	1986	1987	rVV	1147487	1026700	1.25%	0.175%
57	13.025	1987	1991	1996	rVB4	2847733	4675816	5.69%	0.797%
58	13.092	1996	2002	2005	rBV3	2909755	3664654	4.46%	0.625%
59	13.208	2016	2021	2027	rBV4	3626857	6406040	7.80%	1.092%
60	13.263	2027	2030	2033	rBV2	1613400	1835581	2.24%	0.313%
61	13.318	2033	2039	2042	rVV	15805656	19966047	24.31%	3.403%
62	13.348	2042	2044	2048	rVV2	6451654	7358913	8.96%	1.254%
63	13.391	2048	2051	2055	rVV2	3992688	5191662	6.32%	0.885%
64	13.434	2055	2058	2061	rVV2	3512827	4643424	5.65%	0.791%
65	13.476	2061	2065	2073	rVB4	5763955	11881988	14.47%	2.025%
66	13.556	2073	2078	2081	rBV4	1892495	3146046	3.83%	0.536%
67	13.598	2081	2085	2088	rBV	1161228	1514030	1.84%	0.258%
68	13.641	2088	2092	2096	rBV6	1917222	3476245	4.23%	0.593%
69	13.732	2102	2107	2109	rBV3	2436880	4340811	5.29%	0.740%
70	13.787	2113	2116	2119	rVV3	3181580	4281298	5.21%	0.730%
71	13.818	2119	2121	2124	rVV2	2195389	2190544	2.67%	0.373%

Data Path : Z:\VOASRV\HPCHEM1\MSVOA X\DATA\VX021220\
 Data File : VX014933.D
 Acq On : 12 Feb 2020 18:02
 Operator : JC/SP
 Sample : L1432-08
 Misc : 5.0mL/MSVOA X/WATER
 ALS Vial : 19 Sample Multiplier: 1

Instrument :
 MSVOA_X
 ClientSampleId :
 OD-COMP

Integration Parameters: RTEINT.P

Integrator: RTE
 Smoothing : ON Filtering: 5
 Sampling : 1 Min Area: 3 % of largest Peak
 Start Thrs: 0.2 Max Peaks: 100
 Stop Thrs : 0 Peak Location: TOP

If leading or trailing edge < 100 prefer < Baseline drop else tangent >
 Peak separation: 5

Method : Z:\VOASRV\HPCHEM1\MSVOA_X\METHOD\82X021020W.M
 Title : SW846 8260

72	13.854	2124	2127	2129	rVV3	1470952	1565349	1.91%	0.267%
73	13.897	2129	2134	2141	rVB4	5608489	11445450	13.94%	1.951%
74	13.982	2141	2148	2153	rBV5	3342823	7754888	9.44%	1.322%
75	14.055	2157	2160	2162	rBV2	1013354	1231389	1.50%	0.210%
76	14.092	2162	2166	2169	rVV	15377706	16591361	20.20%	2.828%
77	14.129	2169	2172	2175	rVV2	3074777	3794219	4.62%	0.647%
78	14.159	2175	2177	2180	rVV2	1551224	1879173	2.29%	0.320%
79	14.214	2184	2186	2189	rVV	923215	996754	1.21%	0.170%
80	14.281	2192	2197	2205	rVB2	8701214	14966004	18.22%	2.551%
81	14.372	2209	2212	2217	rBV4	1432113	1930778	2.35%	0.329%
82	14.427	2218	2221	2225	rBV	2711795	3021734	3.68%	0.515%
83	14.537	2234	2239	2248	rVV5	5717143	11475748	13.97%	1.956%
84	14.610	2248	2251	2257	rVV6	1675129	3476281	4.23%	0.593%
85	14.671	2257	2261	2267	rVV3	8471570	15312189	18.65%	2.610%
86	14.726	2267	2270	2275	rVB2	3884423	5092496	6.20%	0.868%
87	14.781	2275	2279	2281	rBV2	1712971	2441442	2.97%	0.416%
88	14.805	2281	2283	2286	rVV	4398349	4999459	6.09%	0.852%
89	14.842	2286	2289	2292	rVV2	2010482	3405006	4.15%	0.580%
90	14.872	2292	2294	2296	rVV2	2283796	2690464	3.28%	0.459%
91	14.903	2296	2299	2305	rVV4	2905116	4665776	5.68%	0.795%
92	14.958	2305	2308	2326	rVB4	2569048	8438081	10.28%	1.438%
93	15.104	2326	2332	2336	rBV3	1097822	1976806	2.41%	0.337%
94	15.244	2350	2355	2362	rVB2	3350502	6219968	7.57%	1.060%
95	15.378	2374	2377	2382	rVB4	534129	926694	1.13%	0.158%
96	15.439	2382	2387	2396	rBV2	1021781	1739769	2.12%	0.297%
97	15.543	2400	2404	2409	rVV2	1219729	1779692	2.17%	0.303%
98	15.677	2422	2426	2430	rBV2	878660	1375386	1.67%	0.234%
99	15.720	2430	2433	2441	rVB3	555736	1022130	1.24%	0.174%
100	15.915	2461	2465	2479	rVB7	244506	841019	1.02%	0.143%

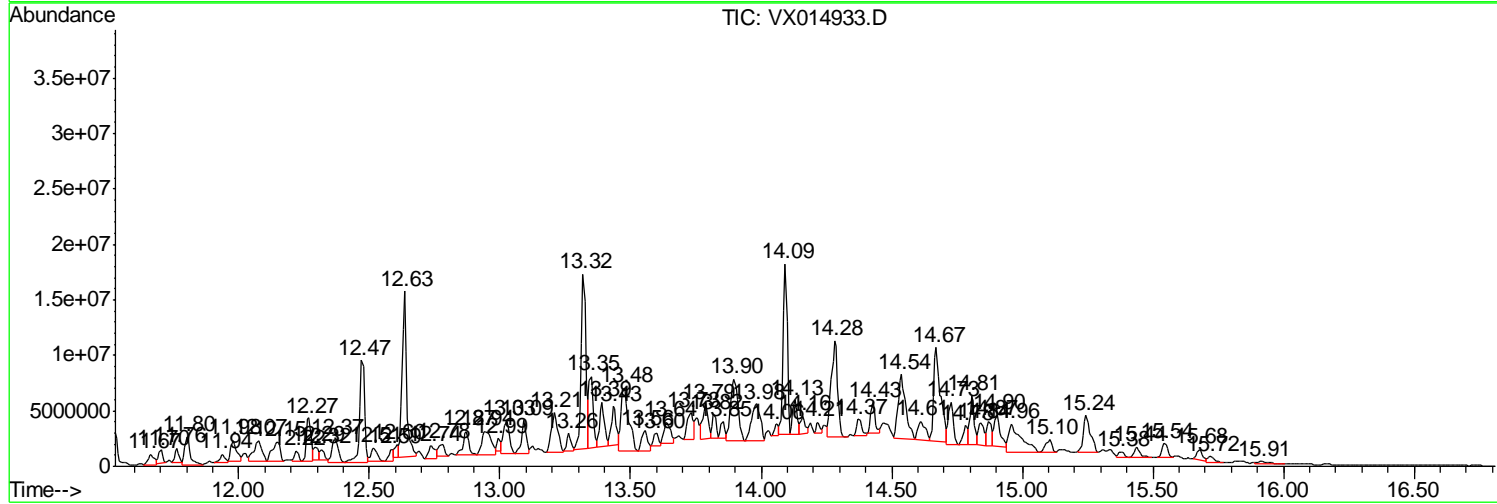
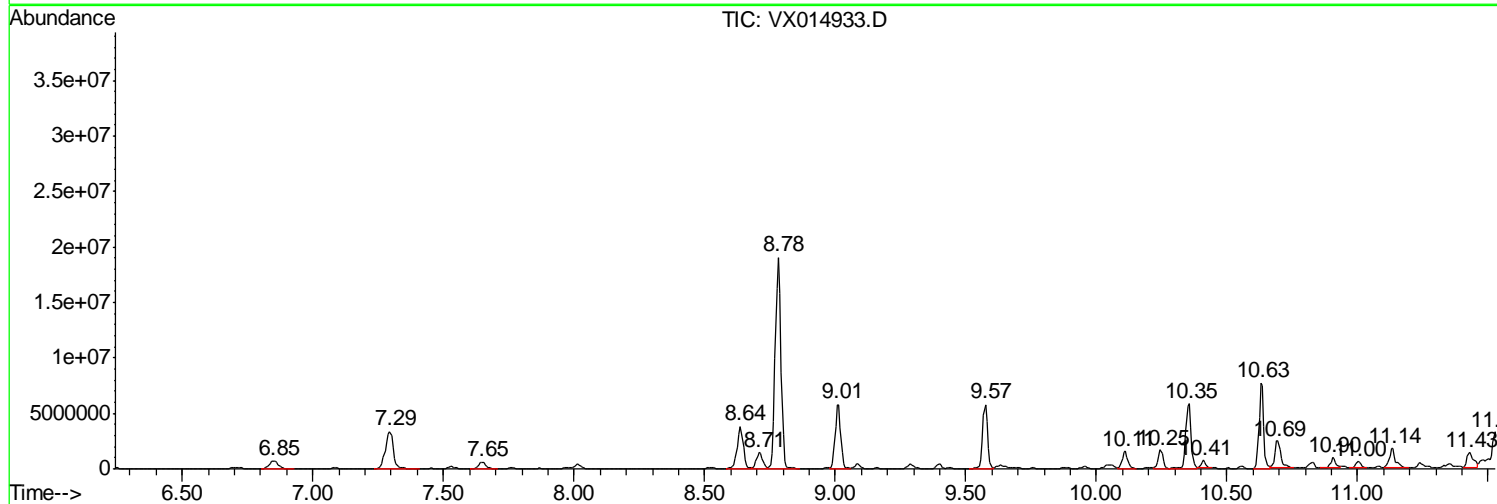
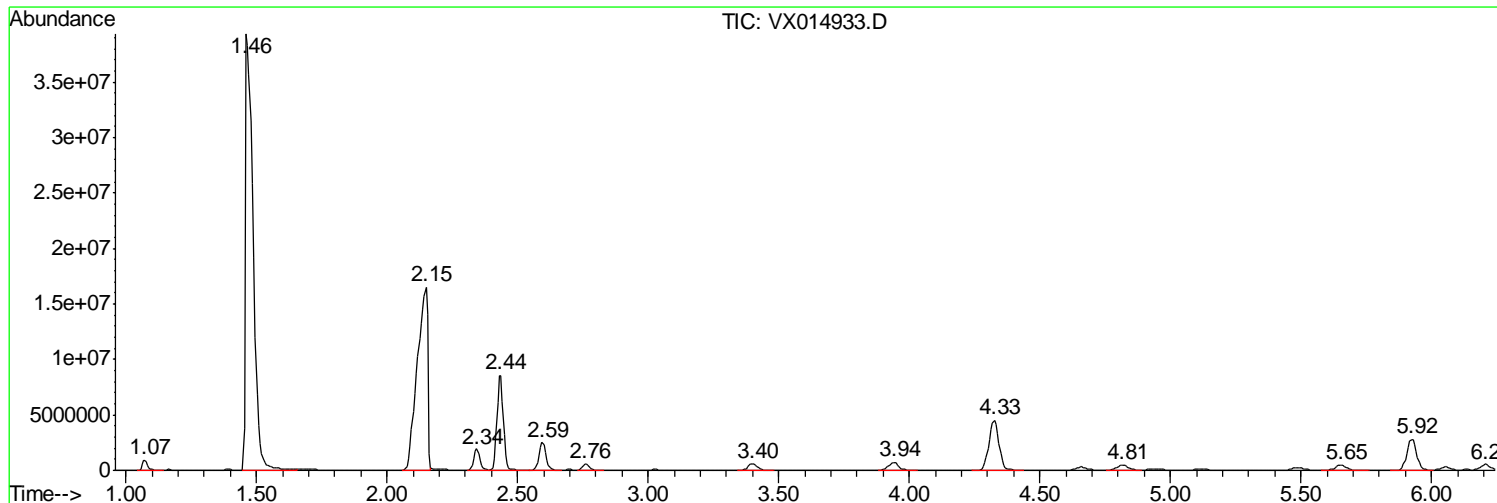
Sum of corrected areas: 586690957

Data Path : Z:\VOASRV\HPCHEM1\MSVOA X\DATA\VX021220\
 Data File : VX014933.D
 Acq On : 12 Feb 2020 18:02
 Operator : JC/SP
 Sample : L1432-08
 Misc : 5.0mL/MSVOA X/WATER
 ALS Vial : 19 Sample Multiplier: 1

Instrument :
 MSVOA_X
ClientSampled :
 OD-COMP

Quant Method : Z:\VOASRV\HPCHEM1\MSVOA_X\METHOD\82X021020W.M
 Quant Title : SW846 8260

TIC Library : C:\DATABASE\NIST11.L
 TIC Integration Parameters: LSCINT.P



Data Path : Z:\VOASRV\HPCHEM1\MSVOA X\DATA\VX021220\
 Data File : VX014933.D
 Acq On : 12 Feb 2020 18:02
 Operator : JC/SP
 Sample : L1432-08
 Misc : 5.0mL/MSVOA X/WATER
 ALS Vial : 19 Sample Multiplier: 1

Instrument :
 MSVOA_X
 ClientSampled :
 OD-COMP

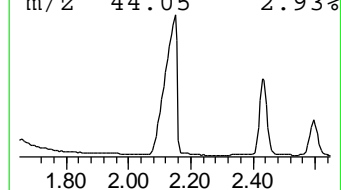
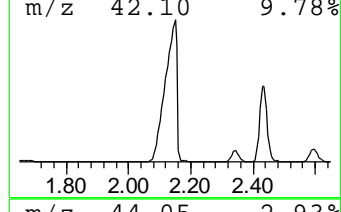
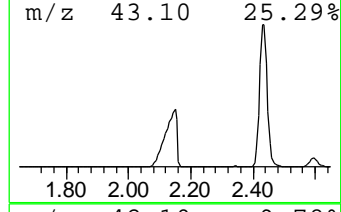
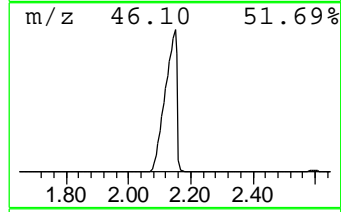
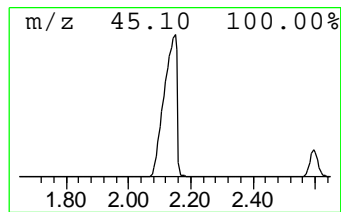
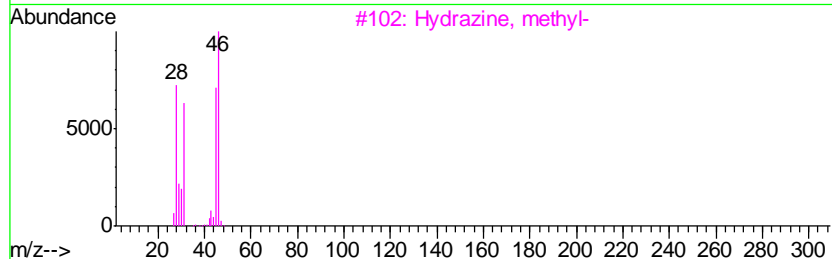
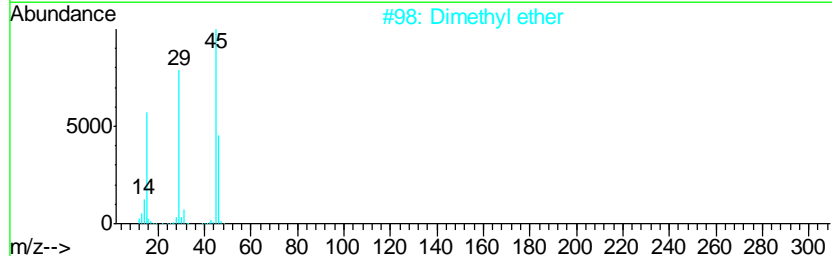
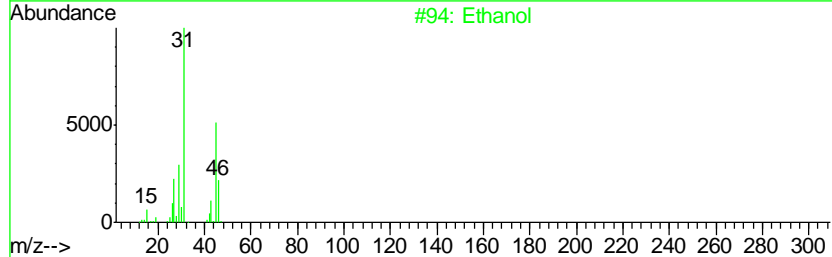
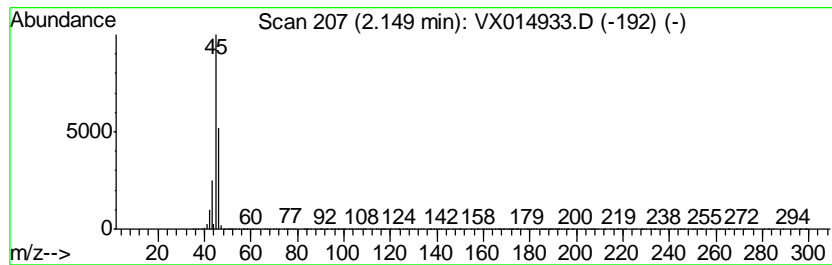
Quant Method : Z:\VOASRV\HPCHEM1\MSVOA_X\METHOD\82X021020W.M
 Quant Title : SW846 8260

TIC Library : C:\DATABASE\NIST11.L
 TIC Integration Parameters: LSCINT.P

 Peak Number 2 Ethanol Concentration Rank 2

R.T.	EstConc	Area	Relative to ISTD	R.T.
2.15	1861.79 ug/l	45935600	Pentafluorobenzene	5.65

Hit#	of	Tentative ID	MW	MolForm	CAS#	Qual
1	5	Ethanol	46	C2H6O	000064-17-5	86
2		Dimethyl ether	46	C2H6O	000115-10-6	9
3		Hydrazine, methyl-	46	CH6N2	000060-34-4	9
4		Methane, nitroso-	45	CH3NO	000865-40-7	4
5		Formic acid	46	CH2O2	000064-18-6	4



Data Path : Z:\VOASRV\HPCHEM1\MSVOA X\DATA\VX021220\
 Data File : VX014933.D
 Acq On : 12 Feb 2020 18:02
 Operator : JC/SP
 Sample : L1432-08
 Misc : 5.0mL/MSVOA X/WATER
 ALS Vial : 19 Sample Multiplier: 1

Instrument :
 MSVOA_X
 ClientSampleID :
 OD-COMP

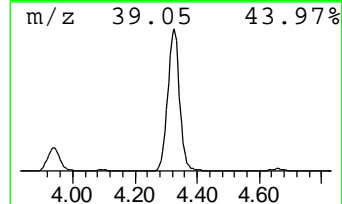
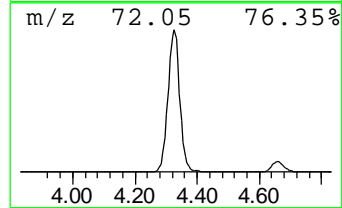
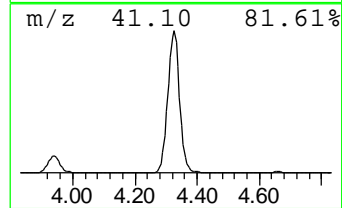
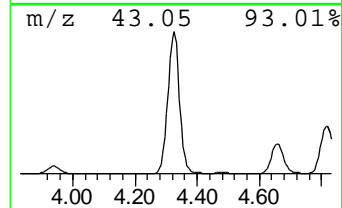
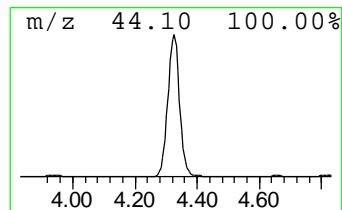
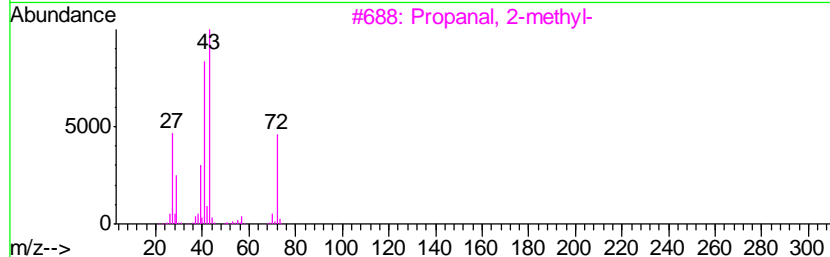
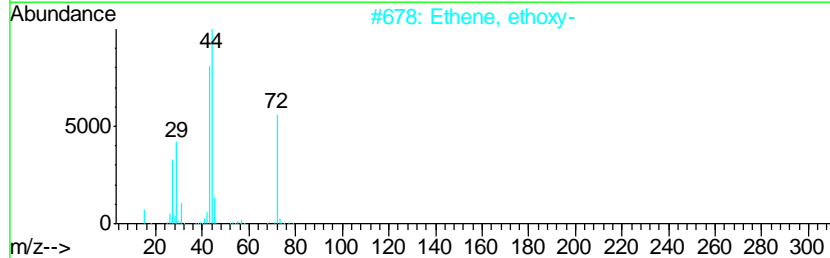
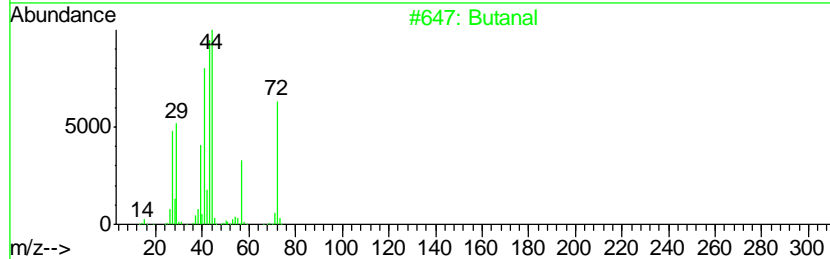
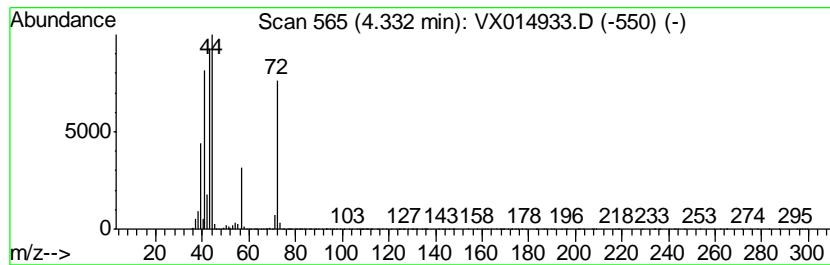
Quant Method : Z:\VOASRV\HPCHEM1\MSVOA_X\METHOD\82X021020W.M
 Quant Title : SW846 8260

TIC Library : C:\DATABASE\NIST11.L
 TIC Integration Parameters: LSCINT.P

 Peak Number 3 Butanal Concentration Rank 3

R.T.	EstConc	Area	Relative to ISTD	R.T.
4.33	487.00 ug/l	12015700	Pentafluorobenzene	5.65

Hit#	of	Tentative ID	MW	MolForm	CAS#	Qual
1	5	Butanal	72	C4H8O	000123-72-8	94
2		Ethene, ethoxy-	72	C4H8O	000109-92-2	52
3		Propanal, 2-methyl-	72	C4H8O	000078-84-2	43
4		1-Propene, 3-methoxy-	72	C4H8O	000627-40-7	37
5		Isobutylene epoxide	72	C4H8O	000558-30-5	35



Data Path : Z:\VOASRV\HPCHEM1\MSVOA X\DATA\VX021220\
 Data File : VX014933.D
 Acq On : 12 Feb 2020 18:02
 Operator : JC/SP
 Sample : L1432-08
 Misc : 5.0mL/MSVOA X/WATER
 ALS Vial : 19 Sample Multiplier: 1

Instrument :
 MSVOA_X
 ClientSampled :
 OD-COMP

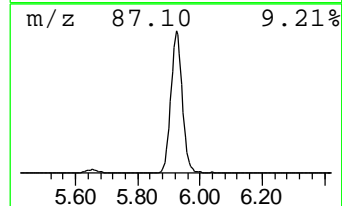
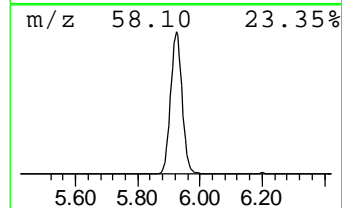
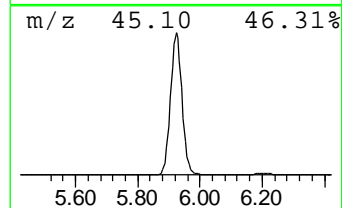
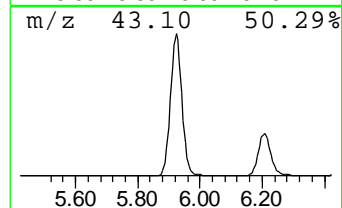
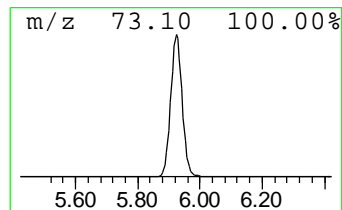
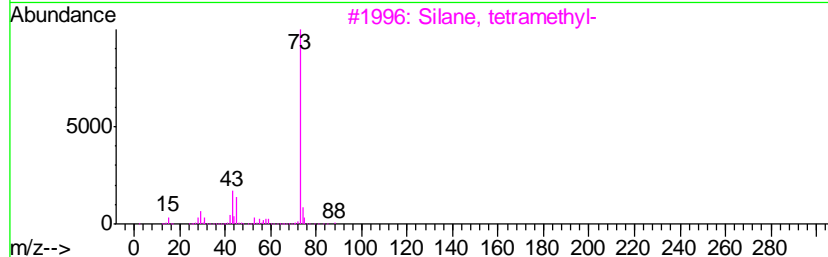
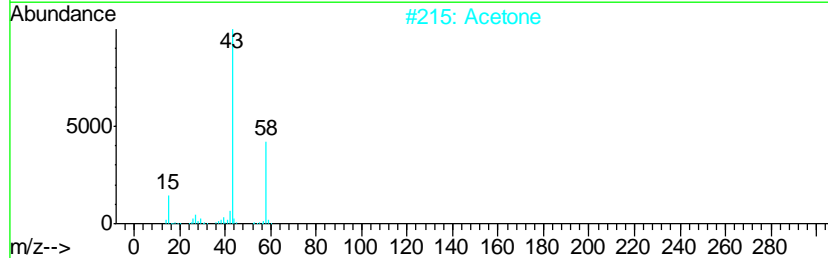
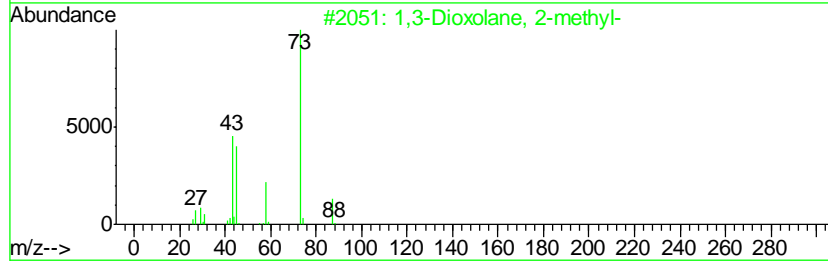
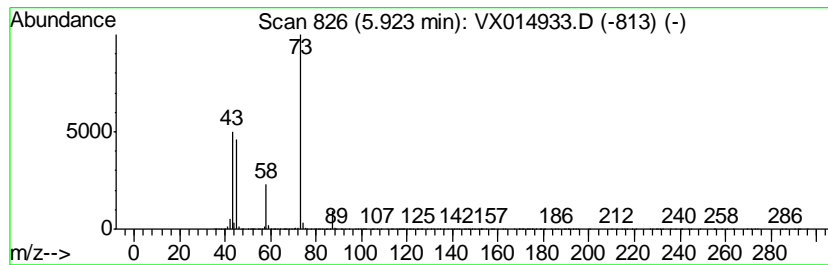
Quant Method : Z:\VOASRV\HPCHEM1\MSVOA_X\METHOD\82X021020W.M
 Quant Title : SW846 8260

TIC Library : C:\DATABASE\NIST11.L
 TIC Integration Parameters: LSCINT.P

 Peak Number 4 1,3-Dioxolane, 2-methyl- Concentration Rank 4

R.T.	EstConc	Area	Relative to ISTD	R.T.
5.92	298.03 ug/l	7353250	Pentafluorobenzene	5.65

Hit#	of	Tentative ID	MW	MolForm	CAS#	Qual
1	5	1,3-Dioxolane, 2-methyl-	88	C4H8O2	000497-26-7	91
2		Acetone	58	C3H6O	000067-64-1	9
3		Silane, tetramethyl-	88	C4H12Si	000075-76-3	9
4		(R)-3-Pyrrolidinol	87	C4H9NO	002799-21-5	9
5		Pentane, 3-methoxy-	102	C6H14O	036839-67-5	9



Data Path : Z:\VOASRV\HPCHEM1\MSVOA X\DATA\VX021220\
 Data File : VX014933.D
 Acq On : 12 Feb 2020 18:02
 Operator : JC/SP
 Sample : L1432-08
 Misc : 5.0mL/MSVOA X/WATER
 ALS Vial : 19 Sample Multiplier: 1

Instrument :
 MSVOA_X
 ClientSampleID :
 OD-COMP

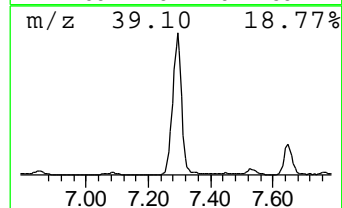
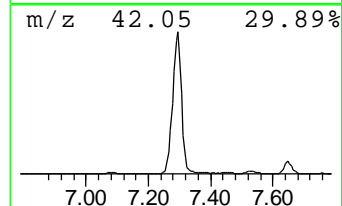
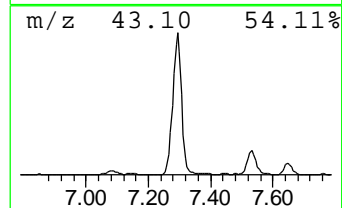
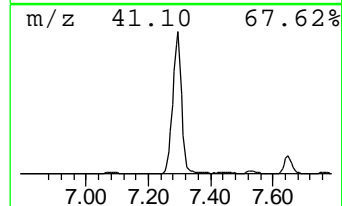
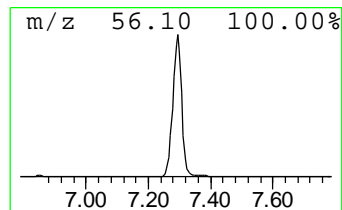
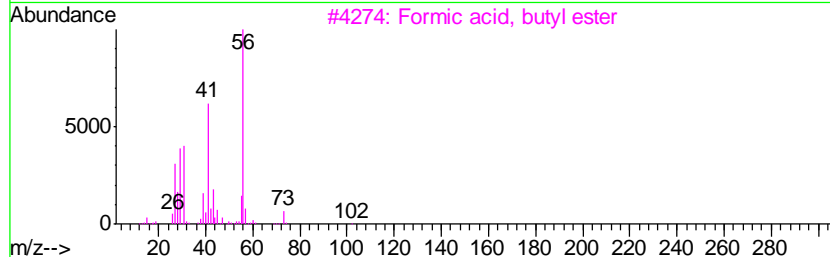
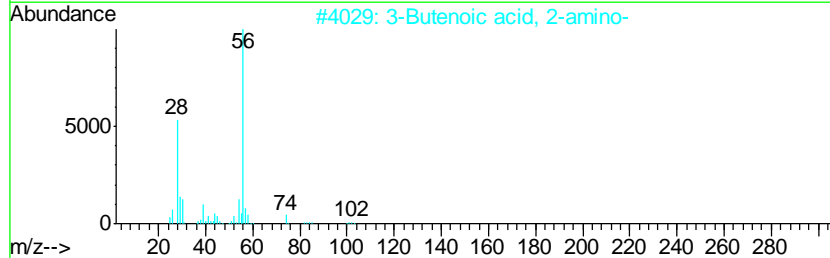
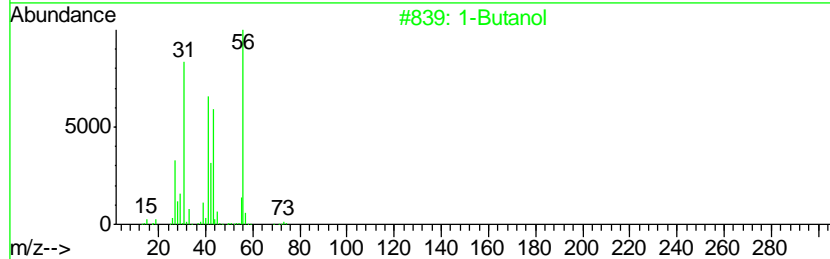
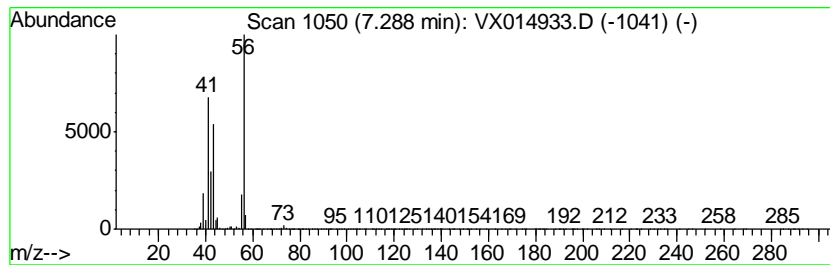
Quant Method : Z:\VOASRV\HPCHEM1\MSVOA_X\METHOD\82X021020W.M
 Quant Title : SW846 8260

TIC Library : C:\DATABASE\NIST11.L
 TIC Integration Parameters: LSCINT.P

 Peak Number 5 1-Butanol Concentration Rank 8

R.T.	EstConc	Area	Relative to ISTD	R.T.
7.29	215.62 ug/l	6963130	1,4-Difluorobenzene	6.85

Hit#	of	Tentative ID	MW	MolForm	CAS#	Qual
1	5	1-Butanol	74	C4H10O	000071-36-3	90
2		3-Butenoic acid, 2-amino-	101	C4H7NO2	056512-51-7	9
3		Formic acid, butyl ester	102	C5H10O2	000592-84-7	9
4		Propanesulfonylacetonitrile	147	C5H9NO2S	175137-61-8	9
5		Oxetane, 3,3-dimethyl-	86	C5H10O	006921-35-3	9



Data Path : Z:\VOASRV\HPCHEM1\MSVOA X\DATA\VX021220\
 Data File : VX014933.D
 Acq On : 12 Feb 2020 18:02
 Operator : JC/SP
 Sample : L1432-08
 Misc : 5.0mL/MSVOA X/WATER
 ALS Vial : 19 Sample Multiplier: 1

Instrument :
 MSVOA_X
 ClientSampleID :
 OD-COMP

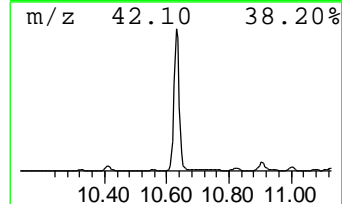
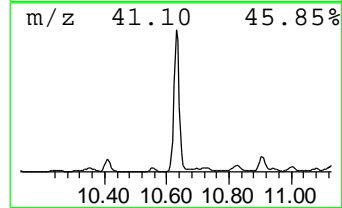
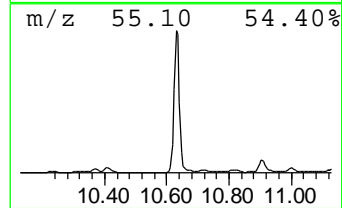
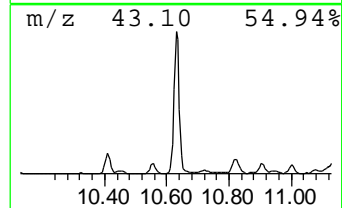
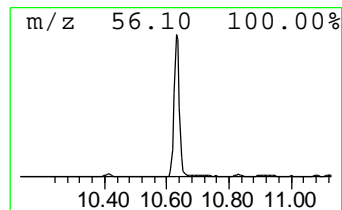
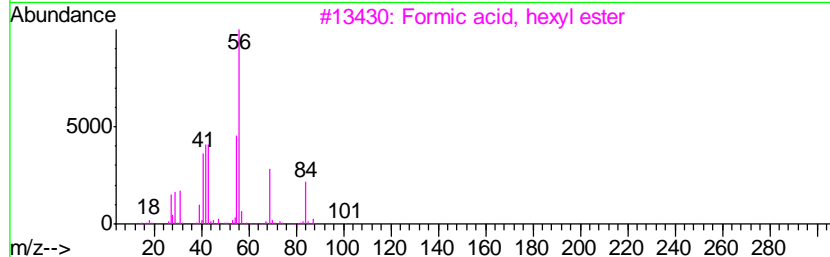
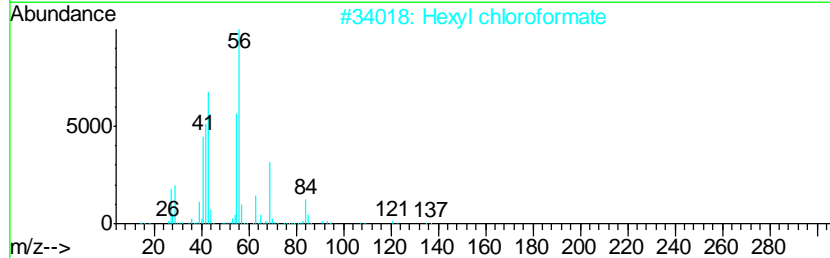
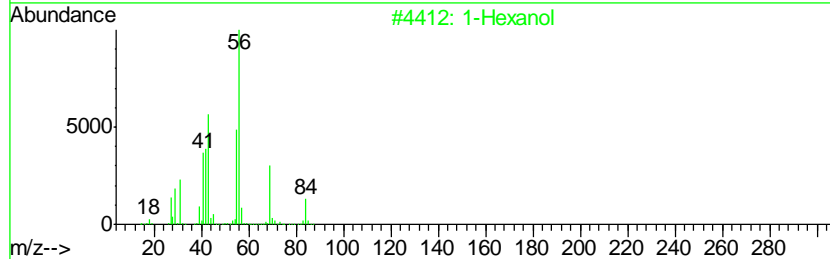
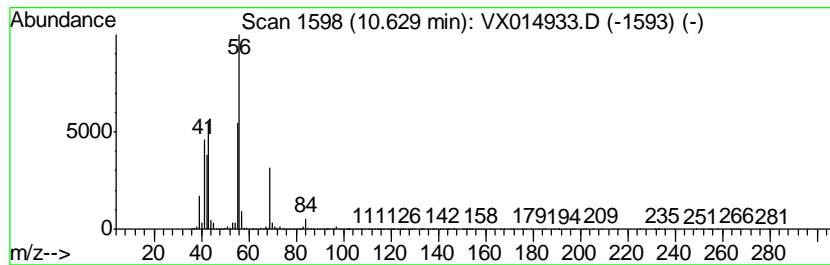
Quant Method : Z:\VOASRV\HPCHEM1\MSVOA_X\METHOD\82X021020W.M
 Quant Title : SW846 8260

TIC Library : C:\DATABASE\NIST11.L
 TIC Integration Parameters: LSCINT.P

 Peak Number 6 1-Hexanol Concentration Rank 7

R.T.	EstConc	Area	Relative to ISTD	R.T.
10.63	220.24 ug/l	9889650	Chlorobenzene-d5	10.11

Hit#	of	Tentative ID	MW	MolForm	CAS#	Qual
1	5	1-Hexanol	102	C6H14O	000111-27-3	90
2		Hexyl chloroformate	164	C7H13ClO2	006092-54-2	83
3		Formic acid, hexyl ester	130	C7H14O2	000629-33-4	78
4		1-Pentanol, 4-methyl-	102	C6H14O	000626-89-1	72
5		3-Chlorohexane	120	C6H13Cl	002346-81-8	56



Data Path : Z:\VOASRV\HPCHEM1\MSVOA X\DATA\VX021220\
 Data File : VX014933.D
 Acq On : 12 Feb 2020 18:02
 Operator : JC/SP
 Sample : L1432-08
 Misc : 5.0mL/MSVOA X/WATER
 ALS Vial : 19 Sample Multiplier: 1

Instrument :
 MSVOA_X
 ClientSampleID :
 OD-COMP

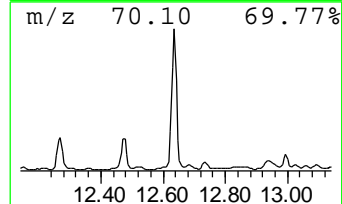
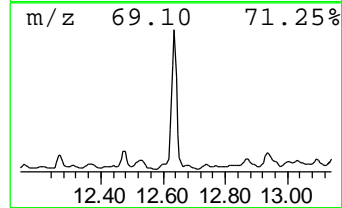
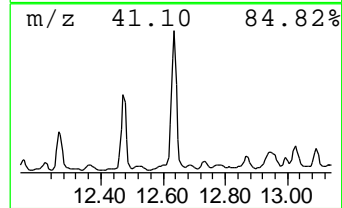
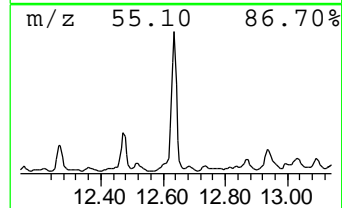
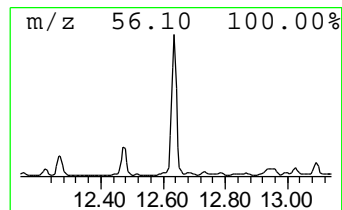
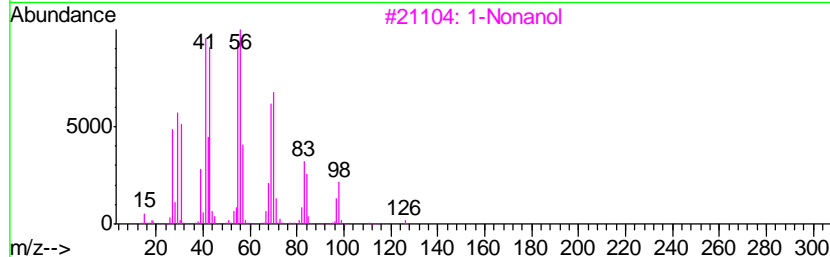
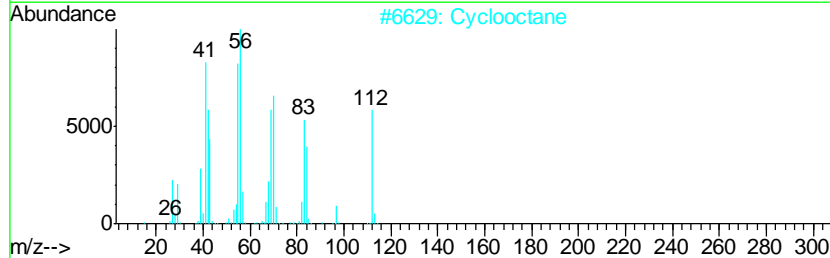
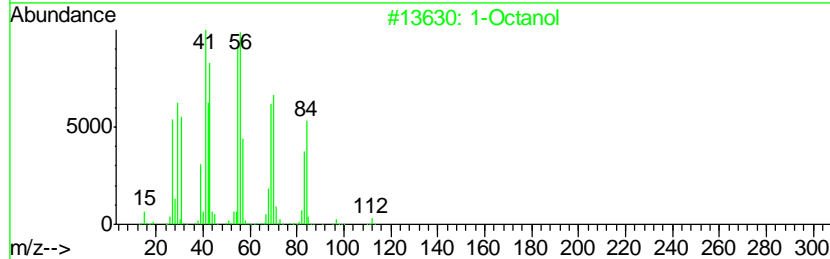
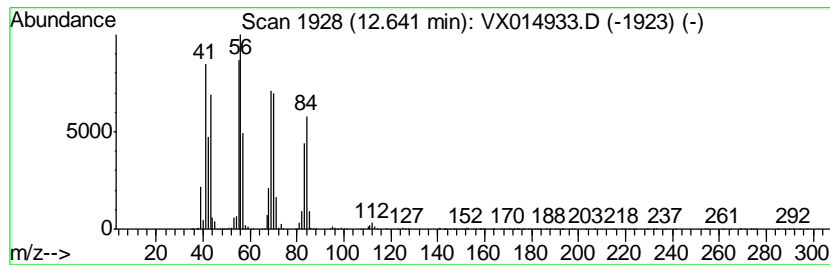
Quant Method : Z:\VOASRV\HPCHEM1\MSVOA_X\METHOD\82X021020W.M
 Quant Title : SW846 8260

TIC Library : C:\DATABASE\NIST11.L
 TIC Integration Parameters: LSCINT.P

 Peak Number 7 1-Octanol Concentration Rank 6

R.T.	EstConc	Area	Relative to ISTD	R.T.
12.64	234.11 ug/l	18152300	1,4-Dichlorobenzene-d4	12.07

Hit#	of	Tentative ID	MW	MolForm	CAS#	Qual
1	5	1-Octanol	130	C8H18O	000111-87-5	90
2		Cyclooctane	112	C8H16	000292-64-8	83
3		1-Nonanol	144	C9H20O	000143-08-8	78
4		Octyl chloroformate	192	C9H17ClO2	007452-59-7	78
5		Cycloheptane	98	C7H14	000291-64-5	62



Data Path : Z:\VOASRV\HPCHEM1\MSVOA X\DATA\VX021220\
 Data File : VX014933.D
 Acq On : 12 Feb 2020 18:02
 Operator : JC/SP
 Sample : L1432-08
 Misc : 5.0mL/MSVOA X/WATER
 ALS Vial : 19 Sample Multiplier: 1

Instrument :
 MSVOA_X
 ClientSampleID :
 OD-COMP

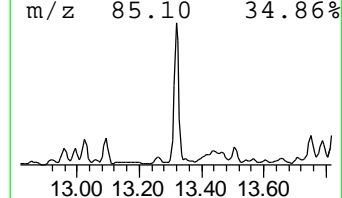
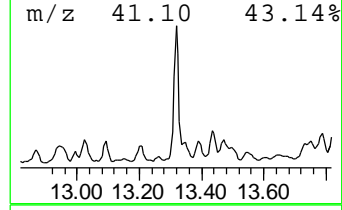
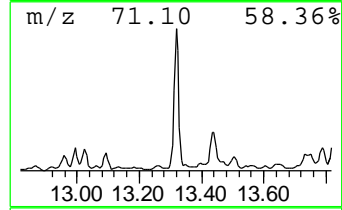
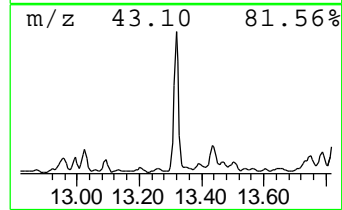
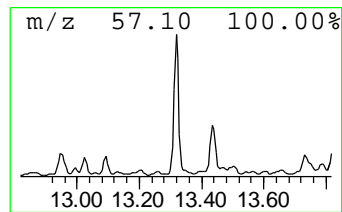
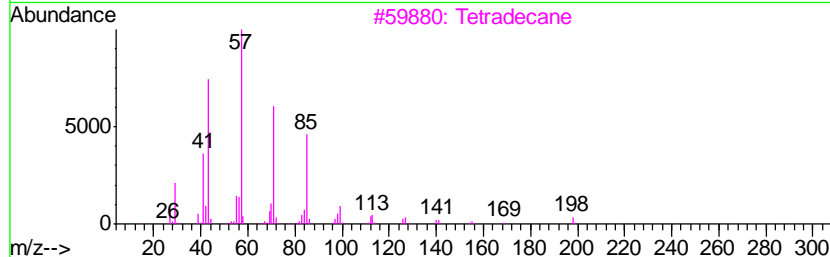
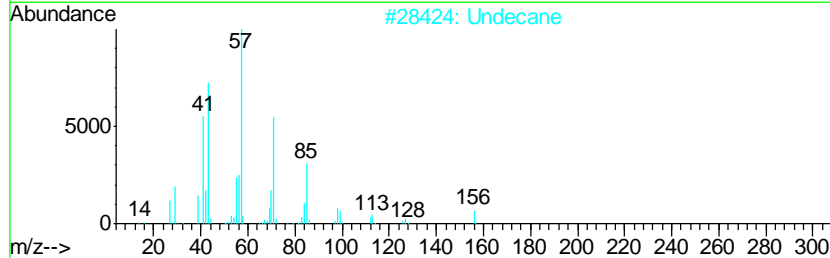
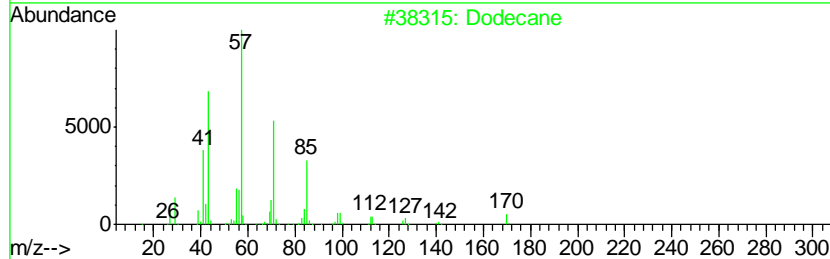
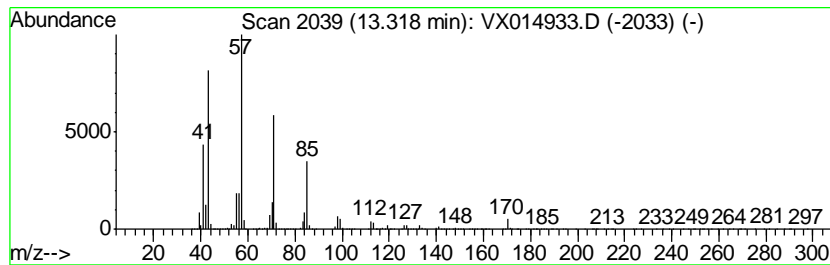
Quant Method : Z:\VOASRV\HPCHEM1\MSVOA_X\METHOD\82X021020W.M
 Quant Title : SW846 8260

TIC Library : C:\DATABASE\NIST11.L
 TIC Integration Parameters: LSCINT.P

 Peak Number 8 Dodecane Concentration Rank 5

R.T.	EstConc	Area	Relative to ISTD	R.T.
13.32	257.50 ug/l	19966000	1,4-Dichlorobenzene-d4	12.07

Hit#	of	Tentative ID	MW	MolForm	CAS#	Qual
1	5	Dodecane	170	C12H26	000112-40-3	96
2		Undecane	156	C11H24	001120-21-4	91
3		Tetradecane	198	C14H30	000629-59-4	90
4		Hexadecane	226	C16H34	000544-76-3	86
5		Undecane, 4,6-dimethyl-	184	C13H28	017312-82-2	81



Data Path : Z:\VOASRV\HPCHEM1\MSVOA X\DATA\VX021220\
 Data File : VX014933.D
 Acq On : 12 Feb 2020 18:02
 Operator : JC/SP
 Sample : L1432-08
 Misc : 5.0mL/MSVOA X/WATER
 ALS Vial : 19 Sample Multiplier: 1

Instrument :
 MSVOA_X
 ClientSampleID :
 OD-COMP

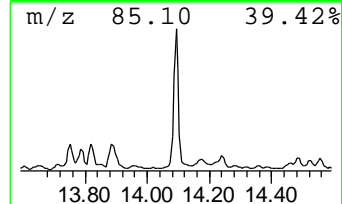
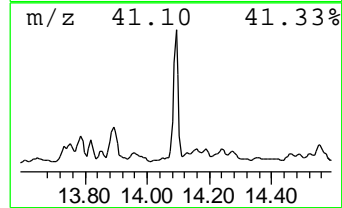
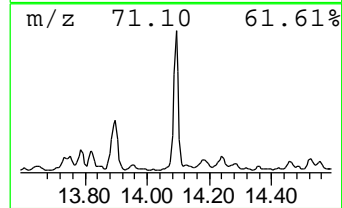
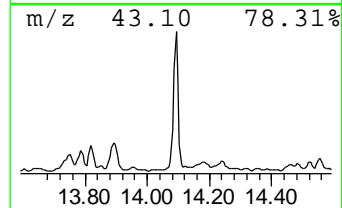
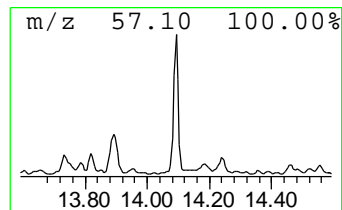
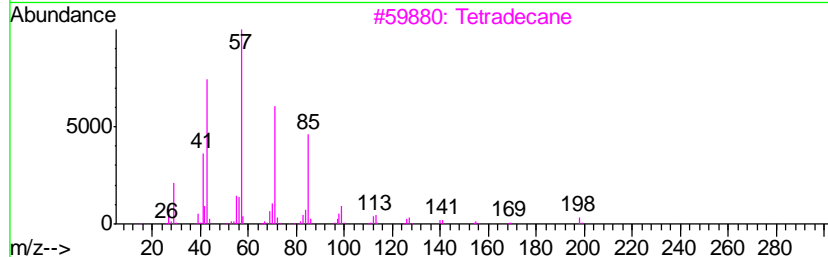
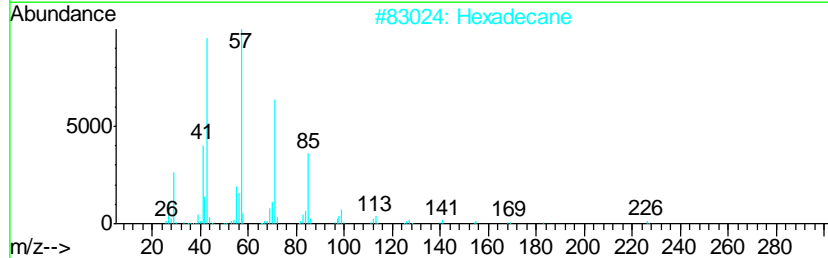
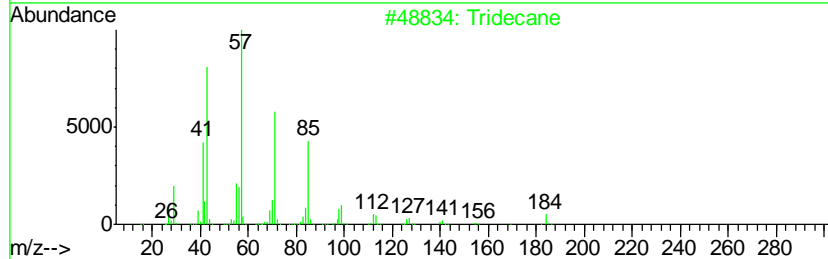
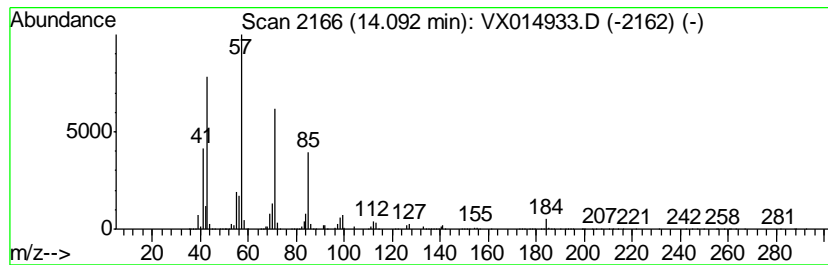
Quant Method : Z:\VOASRV\HPCHEM1\MSVOA_X\METHOD\82X021020W.M
 Quant Title : SW846 8260

TIC Library : C:\DATABASE\NIST11.L
 TIC Integration Parameters: LSCINT.P

 Peak Number 9 Tridecane Concentration Rank 9

R.T.	EstConc	Area	Relative to ISTD	R.T.
14.09	213.98 ug/l	16591400	1,4-Dichlorobenzene-d4	12.07

Hit#	of	Tentative ID	MW	MolForm	CAS#	Qual
1	5	Tridecane	184	C13H28	000629-50-5	96
2		Hexadecane	226	C16H34	000544-76-3	87
3		Tetradecane	198	C14H30	000629-59-4	86
4		Decane, 2,3,6-trimethyl-	184	C13H28	062238-12-4	86
5		Dodecane	170	C12H26	000112-40-3	86



Data Path : Z:\VOASRV\HPCHEM1\MSVOA X\DATA\VX021220\
 Data File : VX014933.D
 Acq On : 12 Feb 2020 18:02
 Operator : JC/SP
 Sample : L1432-08
 Misc : 5.0mL/MSVOA X/WATER
 ALS Vial : 19 Sample Multiplier: 1

Instrument :
 MSVOA_X
 ClientSampled :
 OD-COMP

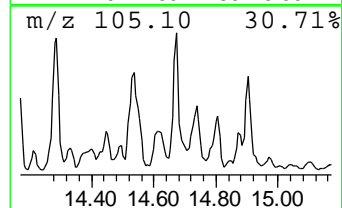
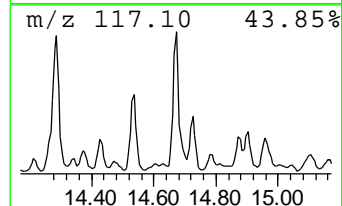
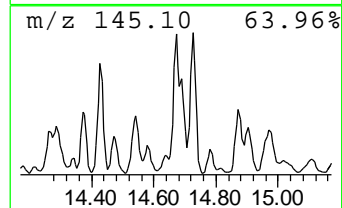
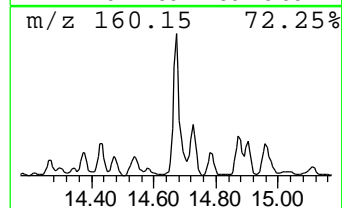
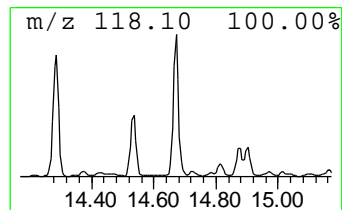
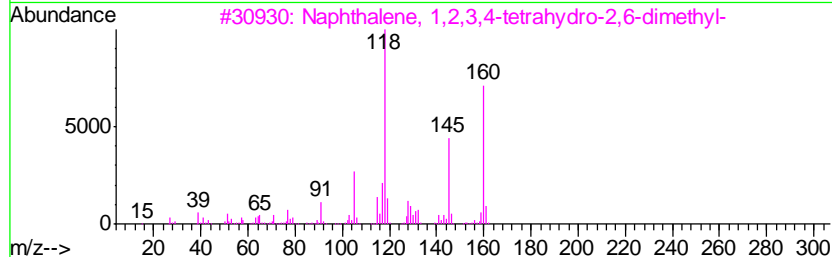
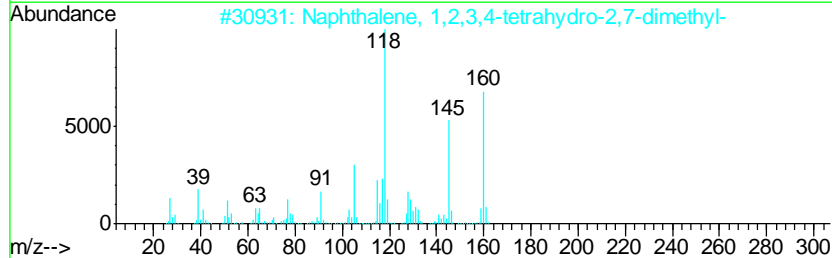
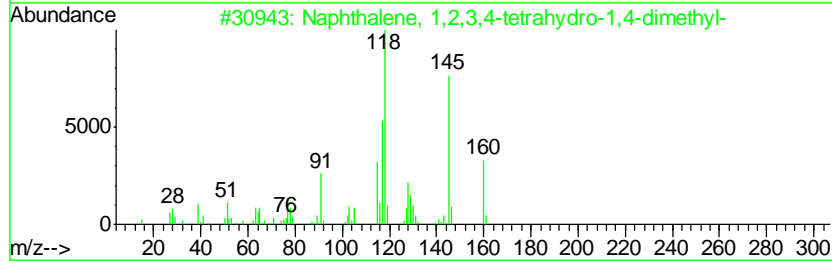
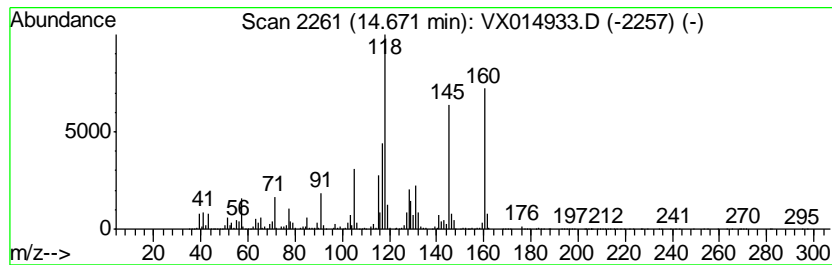
Quant Method : Z:\VOASRV\HPCHEM1\MSVOA_X\METHOD\82X021020W.M
 Quant Title : SW846 8260

TIC Library : C:\DATABASE\NIST11.L
 TIC Integration Parameters: LSCINT.P

 Peak Number 10 Naphthalene, 1,2,3,4-tetra... Concentration Rank 10

R.T.	EstConc	Area	Relative to ISTD	R.T.
14.67	197.48 ug/l	15312200	1,4-Dichlorobenzene-d4	12.07

Hit#	of	Tentative ID	MW	MolForm	CAS#	Qual
1	5	Naphthalene, 1,2,3,4-tetrahydro-...	160	C12H16	004175-54-6	95
2		Naphthalene, 1,2,3,4-tetrahydro-...	160	C12H16	013065-07-1	93
3		Naphthalene, 1,2,3,4-tetrahydro-...	160	C12H16	007524-63-2	70
4		Benzene, 1,3,5-trimethyl-2-(1-me...	160	C12H16	014679-13-1	59
5		Benzene, (3-methyl-1-methylenebu...	160	C12H16	038212-14-5	53



Data Path : Z:\VOASRV\HPCHEM1\MSVOA_X\DATA\VX021220\
 Data File : VX014933.D
 Acq On : 12 Feb 2020 18:02
 Operator : JC/SP
 Sample : L1432-08
 Misc : 5.0mL/MSVOA_X/WATER
 ALS Vial : 19 Sample Multiplier: 1

Instrument :
 MSVOA_X
 ClientSampleId :
 OD-COMP

Quant Method : Z:\VOASRV\HPCHEM1\MSVOA_X\METHOD\82X021020W.M
 Quant Title : SW846 8260

TIC Library : C:\DATABASE\NIST11.L
 TIC Integration Parameters: LSCINT.P

TIC Top Hit name	RT	EstConc	Units	Response	--Internal Standard--			
					#	RT	Resp	Conc
Ethanol	2.15	1861.8	ug/l	45935600	1	5.65	1233640	50.0
Butanal	4.33	487.0	ug/l	12015700	1	5.65	1233640	50.0
1,3-Dioxolane, 2-...	5.92	298.0	ug/l	7353250	1	5.65	1233640	50.0
1-Butanol	7.29	215.6	ug/l	6963130	2	6.85	1614690	50.0
1-Hexanol	10.63	220.2	ug/l	9889650	3	10.11	2245210	50.0
1-Octanol	12.64	234.1	ug/l	18152300	4	12.07	3876890	50.0
Dodecane	13.32	257.5	ug/l	19966000	4	12.07	3876890	50.0
Tridecane	14.09	214.0	ug/l	16591400	4	12.07	3876890	50.0
Naphthalene, 1,2,...	14.67	197.5	ug/l	15312200	4	12.07	3876890	50.0