

Data Path : Z:\voasrv\HPCHEM1\MSVOA\_X\Data\VX021425\  
 Data File : VX044954.D  
 Acq On : 14 Feb 2025 12:26  
 Operator : JC/MD  
 Sample : Q1347-01RE  
 Misc : 5.0mL/MSVOA\_X/WATER  
 ALS Vial : 8 Sample Multiplier: 1

Instrument :  
 MSVOA\_X  
 ClientSampleId :  
 BP-VPB-192-EB-20250207

Quant Time: Feb 14 12:51:35 2025  
 Quant Method : Z:\voasrv\HPCHEM1\MSVOA\_X\Method\82X021025W.M  
 Quant Title : SW846 8260  
 QLast Update : Tue Feb 11 03:41:08 2025  
 Response via : Initial Calibration

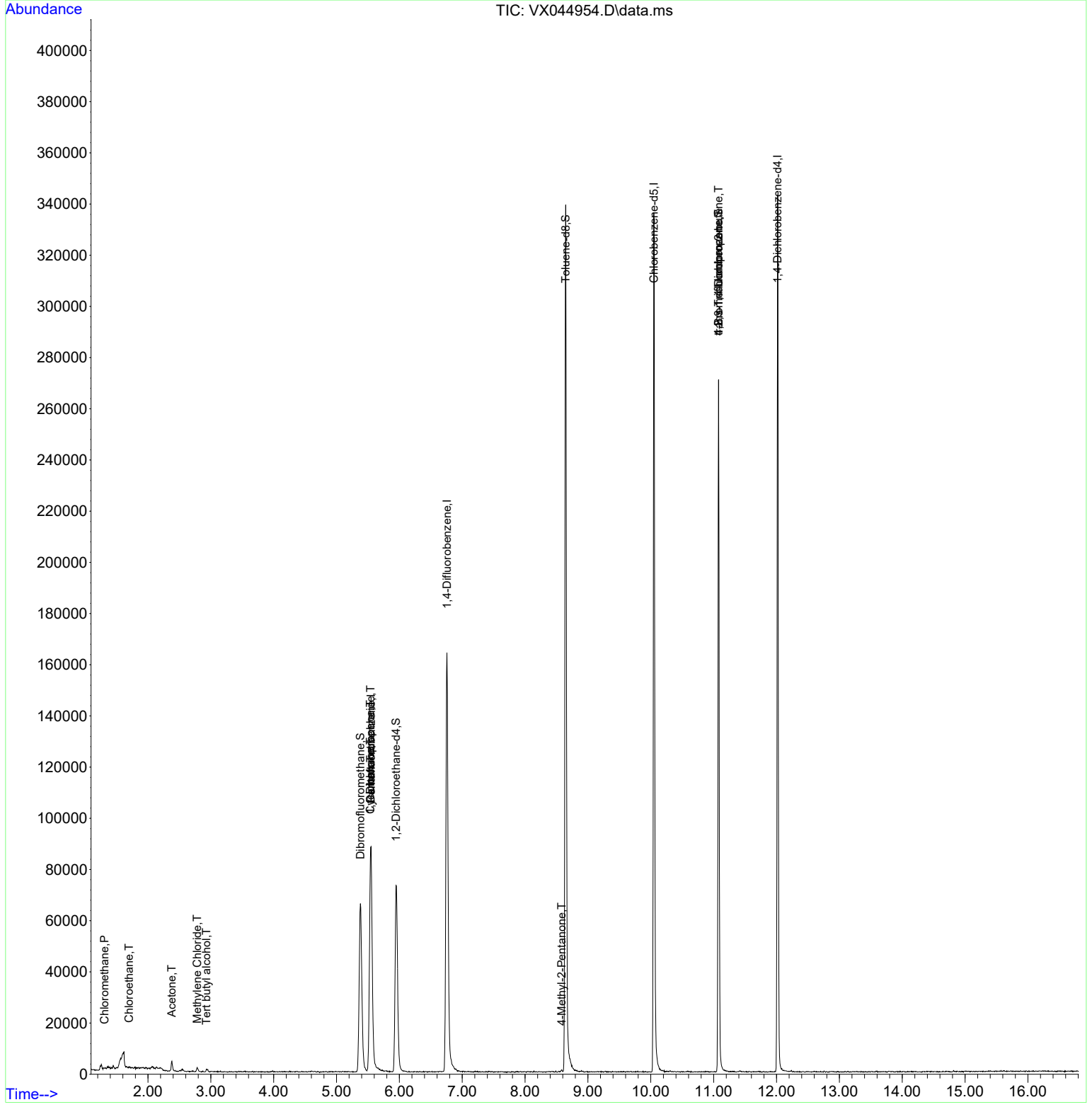
Compound	R.T.	QIon	Response	Conc	Units	Dev(Min)
-----						
Internal Standards						
1) Pentafluorobenzene	5.550	168	84246	50.00	ug/l	0.00
34) 1,4-Difluorobenzene	6.757	114	171322	50.00	ug/l	0.00
63) Chlorobenzene-d5	10.049	117	154790	50.00	ug/l	0.00
72) 1,4-Dichlorobenzene-d4	12.018	152	64957	50.00	ug/l	0.00
System Monitoring Compounds						
33) 1,2-Dichloroethane-d4	5.946	65	70435	57.12	ug/l	0.00
Spiked Amount	50.000	Range	74 - 125	Recovery	=	114.24%
35) Dibromofluoromethane	5.379	113	58500	52.52	ug/l	0.00
Spiked Amount	50.000	Range	75 - 124	Recovery	=	105.04%
50) Toluene-d8	8.647	98	209395	49.71	ug/l	0.00
Spiked Amount	50.000	Range	86 - 113	Recovery	=	99.42%
62) 4-Bromofluorobenzene	11.079	95	72716	51.21	ug/l	0.00
Spiked Amount	50.000	Range	77 - 121	Recovery	=	102.42%
Target Compounds						
						Qvalue
3) Chloromethane	1.307	50	481	0.33	ug/l	98
6) Chloroethane	1.697	64	27	1.38	ug/l #	42
11) Tert butyl alcohol	2.928	59	477	2.08	ug/l #	73
16) Acetone	2.380	43	3820	7.71	ug/l	100
20) Methylene Chloride	2.782	84	630	0.52	ug/l #	84
31) Cyclohexane	5.538	56	2216	1.16	ug/l #	1
36) 1,1-Dichloropropene	5.538	75	7493	4.66	ug/l #	51
38) Carbon Tetrachloride	5.544	117	9122	5.79	ug/l #	14
51) 4-Methyl-2-Pentanone	8.580	43	532	0.30	ug/l #	72
76) 1,2,3-Trichloropropane	11.079	75	38265	26.57	ug/l #	34
81) trans-1,4-Dichloro-2-b...	11.079	75	38265	68.35	ug/l #	11
-----						

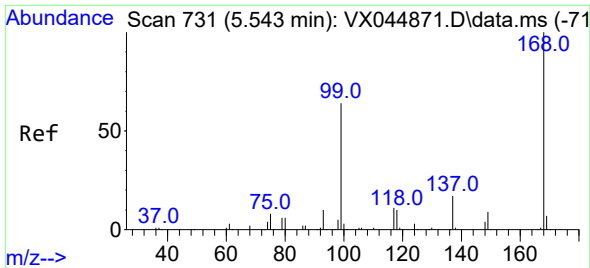
(#) = qualifier out of range (m) = manual integration (+) = signals summed

Data Path : Z:\voasrv\HPCHEM1\MSVOA\_X\Data\VX021425\  
 Data File : VX044954.D  
 Acq On : 14 Feb 2025 12:26  
 Operator : JC/MD  
 Sample : Q1347-01RE  
 Misc : 5.0mL/MSVOA\_X/WATER  
 ALS Vial : 8 Sample Multiplier: 1

**Instrument :**  
 MSVOA\_X  
**ClientSampleId :**  
 BP-VPB-192-EB-20250207

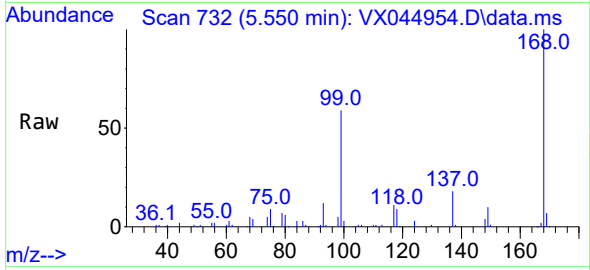
Quant Time: Feb 14 12:51:35 2025  
 Quant Method : Z:\voasrv\HPCHEM1\MSVOA\_X\Method\82X021025W.M  
 Quant Title : SW846 8260  
 QLast Update : Tue Feb 11 03:41:08 2025  
 Response via : Initial Calibration



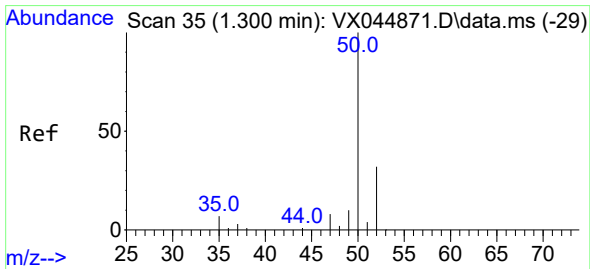
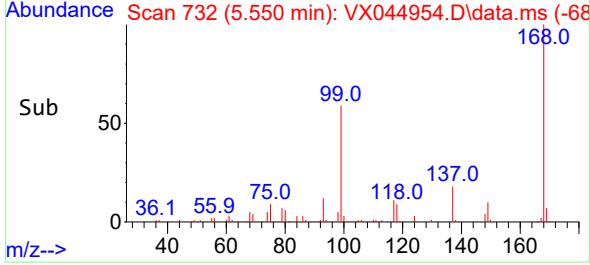
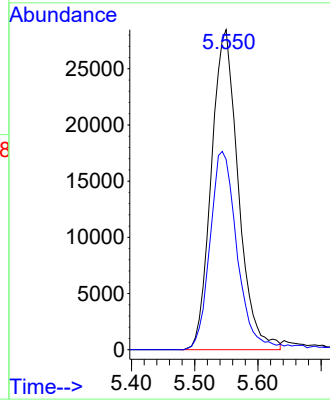


#1  
 Pentafluorobenzene  
 Concen: 50.00 ug/l  
 RT: 5.550 min Scan# 71  
 Delta R.T. 0.007 min  
 Lab File: VX044954.D  
 Acq: 14 Feb 2025 12:26

Instrument : MSVOA\_X  
 ClientSampleId : BP-VPB-192-EB-20250207

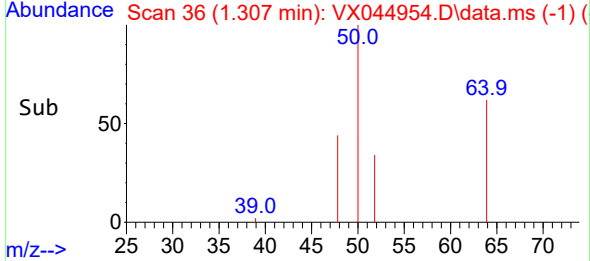
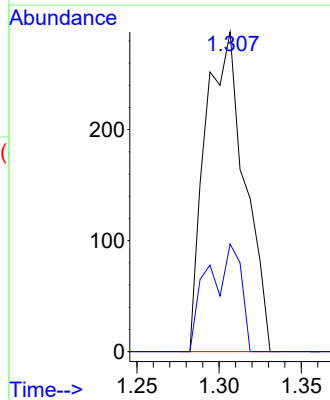
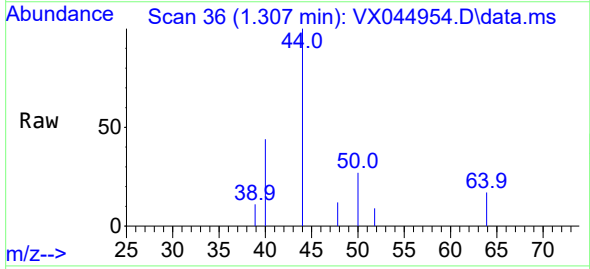


Tgt Ion:168 Resp: 84246  
 Ion Ratio Lower Upper  
 168 100  
 99 59.4 51.2 76.8

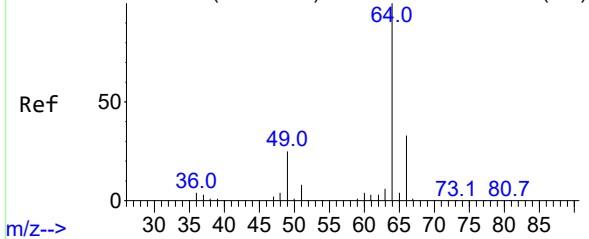


#3  
 Chloromethane  
 Concen: 0.33 ug/l  
 RT: 1.307 min Scan# 36  
 Delta R.T. 0.006 min  
 Lab File: VX044954.D  
 Acq: 14 Feb 2025 12:26

Tgt Ion: 50 Resp: 481  
 Ion Ratio Lower Upper  
 50 100  
 52 33.7 25.9 38.9



Abundance Scan 95 (1.666 min): VX044871.D\data.ms (-84)

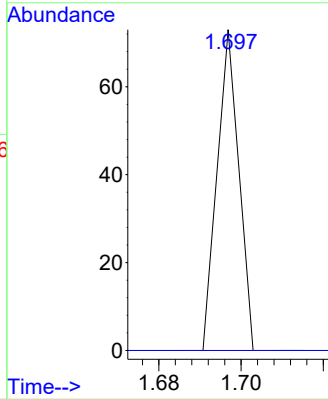
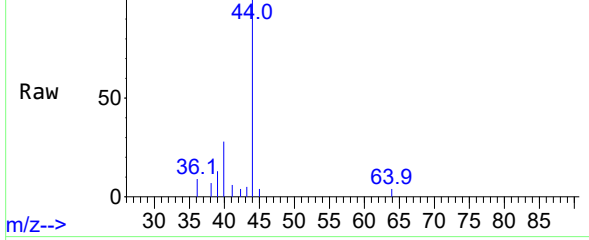


#6  
 Chloroethane  
 Concen: 1.38 ug/l  
 RT: 1.697 min Scan# 10  
 Delta R.T. 0.031 min  
 Lab File: VX044954.D  
 Acq: 14 Feb 2025 12:26

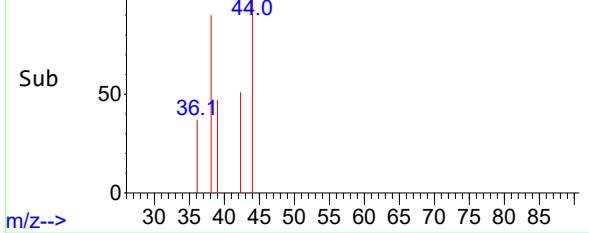
Instrument : MSVOA\_X  
 ClientSampleId : BP-VPB-192-EB-20250207

Tgt Ion: 64 Resp: 27  
 Ion Ratio Lower Upper  
 64 100  
 66 0.0 25.9 38.9#

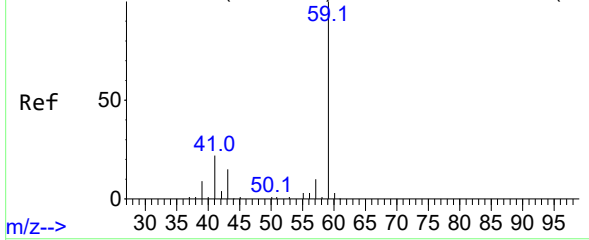
Abundance Scan 100 (1.697 min): VX044954.D\data.ms



Abundance Scan 100 (1.697 min): VX044954.D\data.ms (-46)



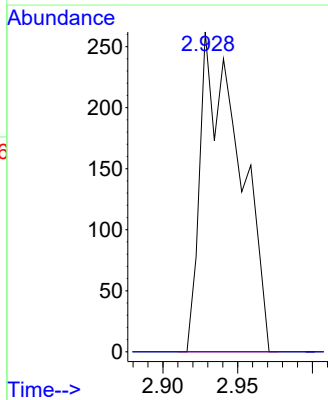
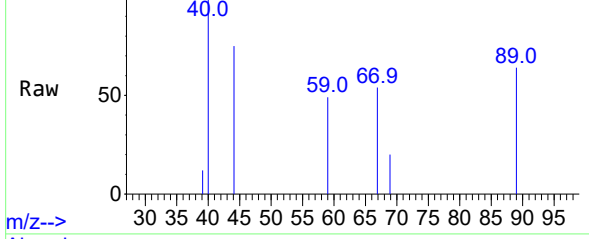
Abundance Scan 311 (2.983 min): VX044871.D\data.ms (-29)



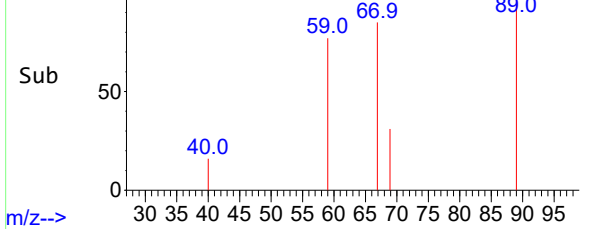
#11  
 Tert butyl alcohol  
 Concen: 2.08 ug/l  
 RT: 2.928 min Scan# 302  
 Delta R.T. -0.055 min  
 Lab File: VX044954.D  
 Acq: 14 Feb 2025 12:26

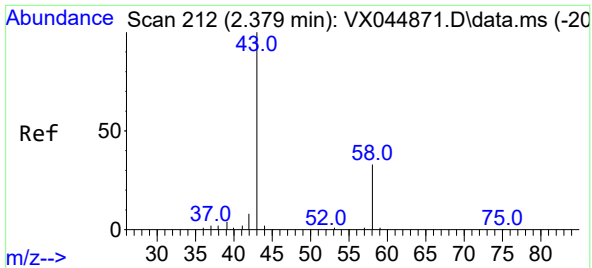
Tgt Ion: 59 Resp: 477  
 Ion Ratio Lower Upper  
 59 100  
 57 0.0 8.1 12.1#

Abundance Scan 302 (2.928 min): VX044954.D\data.ms



Abundance Scan 302 (2.928 min): VX044954.D\data.ms (-26)



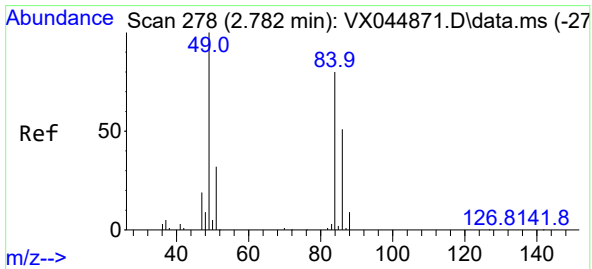
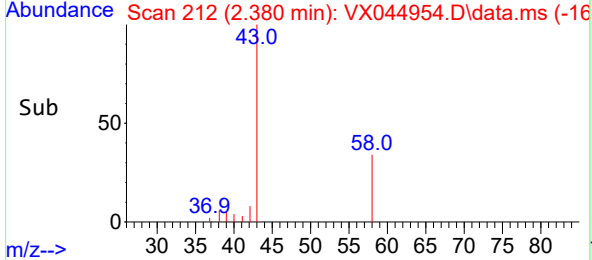
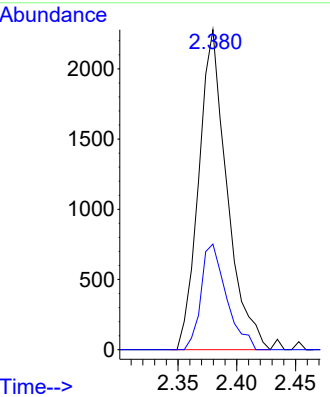
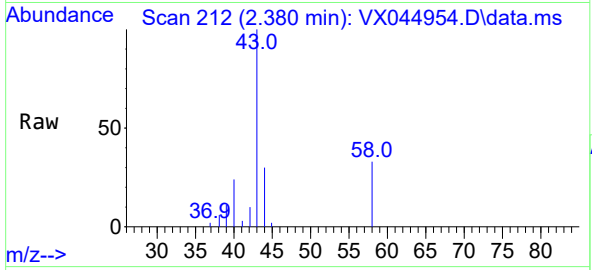


#16  
 Acetone  
 Concen: 7.71 ug/l  
 RT: 2.380 min Scan# 212  
 Delta R.T. 0.000 min  
 Lab File: VX044954.D  
 Acq: 14 Feb 2025 12:26

Instrument : MSVOA\_X  
 ClientSampleId : BP-VPB-192-EB-20250207

Tgt Ion: 43 Resp: 3820

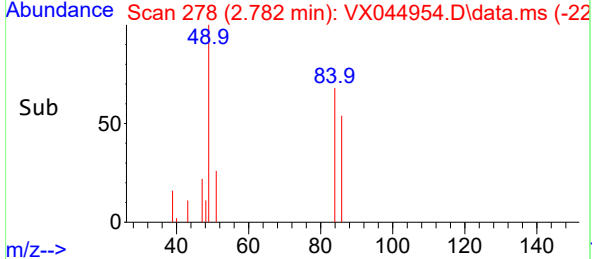
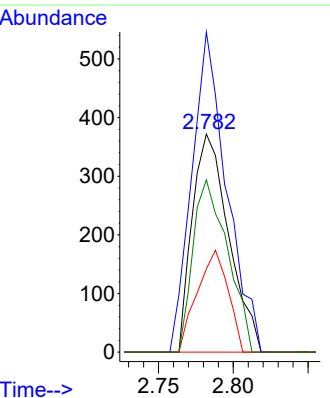
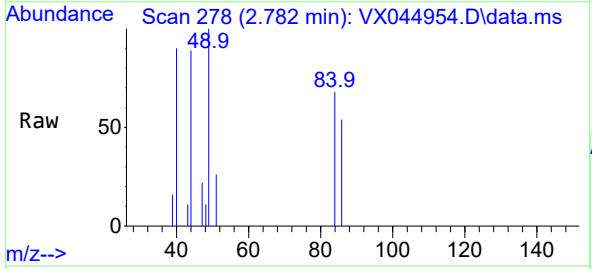
Ion	Ratio	Lower	Upper
43	100		
58	33.0	26.5	39.7

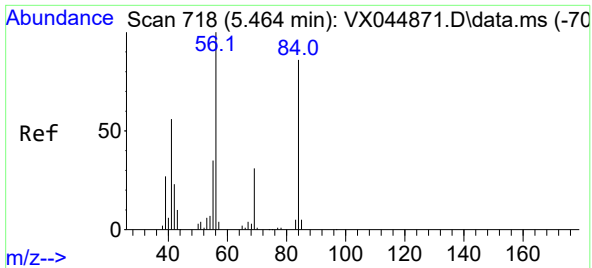


#20  
 Methylene Chloride  
 Concen: 0.52 ug/l  
 RT: 2.782 min Scan# 278  
 Delta R.T. 0.000 min  
 Lab File: VX044954.D  
 Acq: 14 Feb 2025 12:26

Tgt Ion: 84 Resp: 630

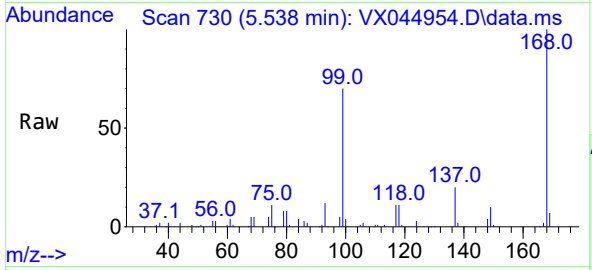
Ion	Ratio	Lower	Upper
84	100		
49	146.8	100.1	150.1
51	38.2	31.7	47.5
86	79.0	50.8	76.2



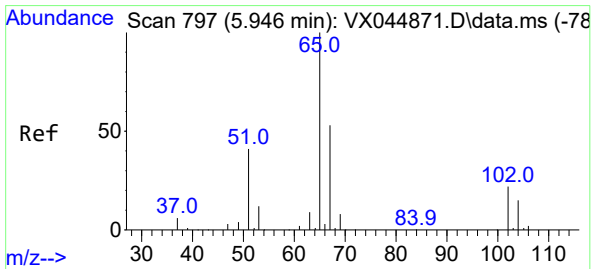
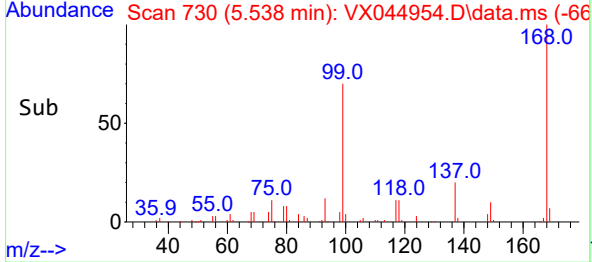
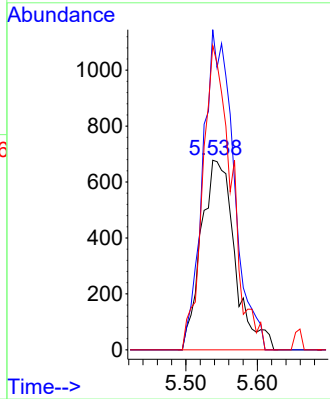


#31  
 Cyclohexane  
 Concen: 1.16 ug/l  
 RT: 5.538 min Scan# 718  
 Delta R.T. 0.073 min  
 Lab File: VX044954.D  
 Acq: 14 Feb 2025 12:26

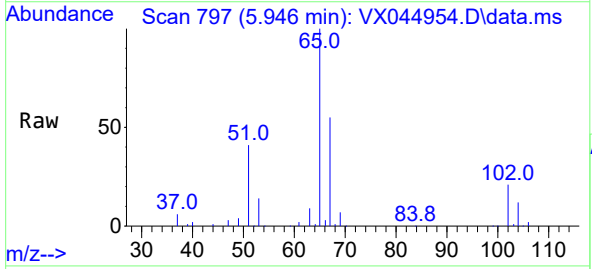
**Instrument :**  
 MSVOA\_X  
**ClientSampleId :**  
 BP-VPB-192-EB-20250207



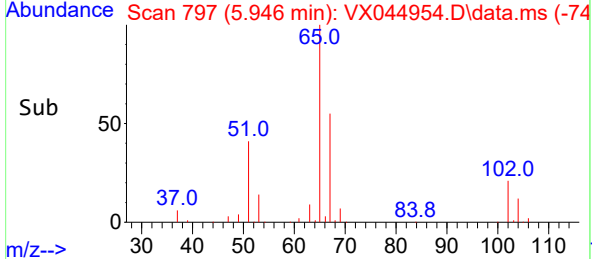
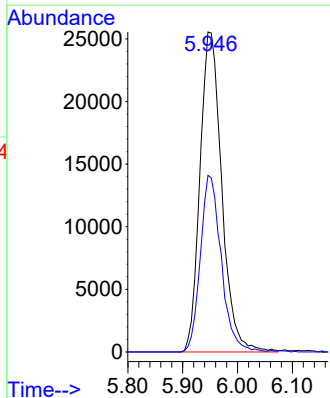
Tgt Ion: 56 Resp: 2216  
 Ion Ratio Lower Upper  
 56 100  
 69 168.9 24.4 36.6#  
 84 160.5 69.0 103.6#

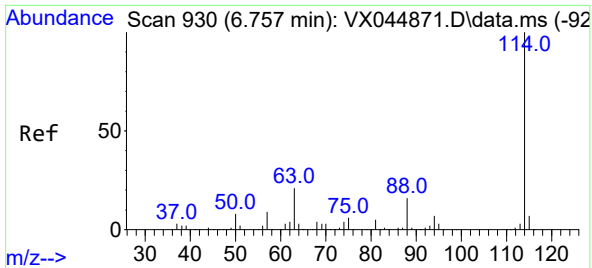


#33  
 1,2-Dichloroethane-d4  
 Concen: 57.12 ug/l  
 RT: 5.946 min Scan# 797  
 Delta R.T. 0.000 min  
 Lab File: VX044954.D  
 Acq: 14 Feb 2025 12:26



Tgt Ion: 65 Resp: 70435  
 Ion Ratio Lower Upper  
 65 100  
 67 52.8 0.0 108.2



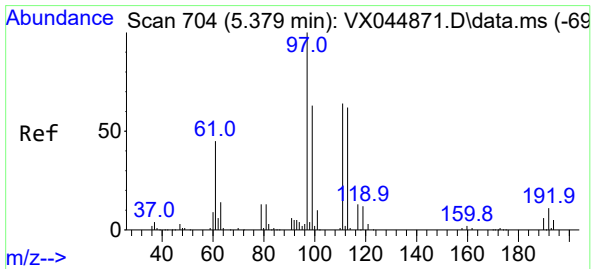
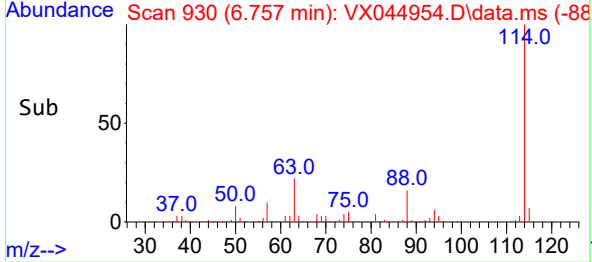
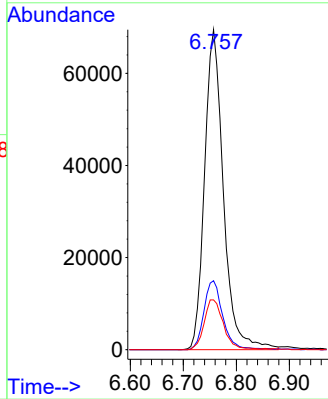
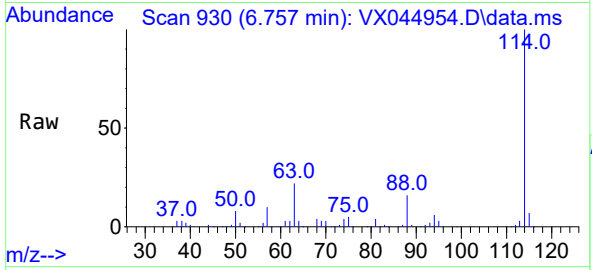


#34  
 1,4-Difluorobenzene  
 Concen: 50.00 ug/l  
 RT: 6.757 min Scan# 91  
 Delta R.T. 0.000 min  
 Lab File: VX044954.D  
 Acq: 14 Feb 2025 12:26

Instrument : MSVOA\_X  
 ClientSampleId : BP-VPB-192-EB-20250207

Tgt Ion:114 Resp: 171322

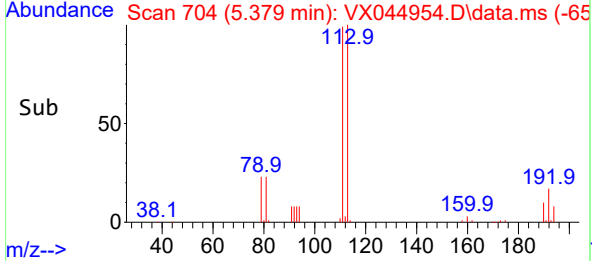
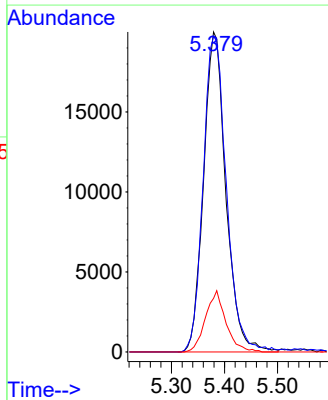
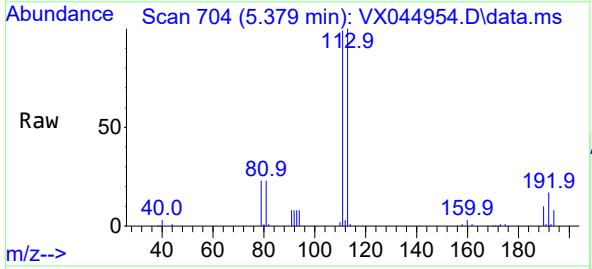
Ion	Ratio	Lower	Upper
114	100		
63	21.6	0.0	42.4
88	15.6	0.0	31.4

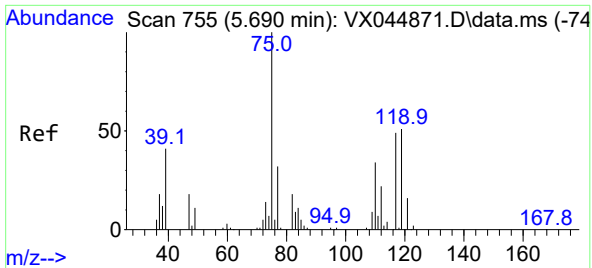


#35  
 Dibromofluoromethane  
 Concen: 52.52 ug/l  
 RT: 5.379 min Scan# 704  
 Delta R.T. 0.000 min  
 Lab File: VX044954.D  
 Acq: 14 Feb 2025 12:26

Tgt Ion:113 Resp: 58500

Ion	Ratio	Lower	Upper
113	100		
111	102.8	83.5	125.3
192	17.5	14.4	21.6



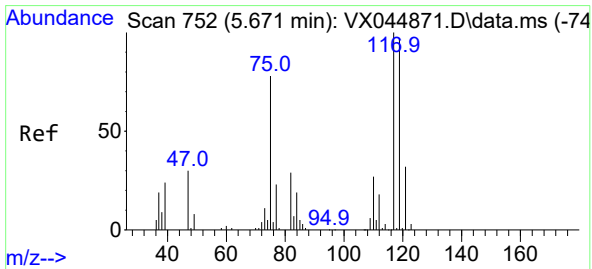
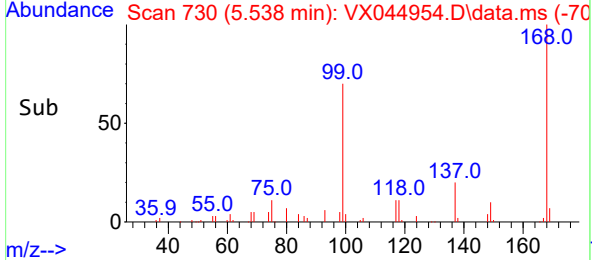
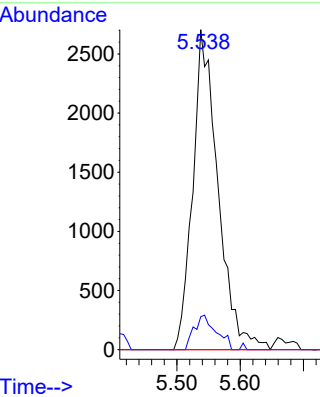
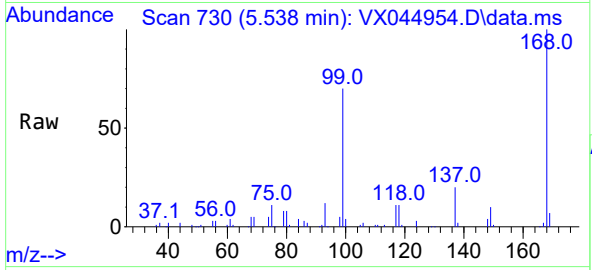


#36  
 1,1-Dichloropropene  
 Concen: 4.66 ug/l  
 RT: 5.538 min Scan# 711  
 Delta R.T. -0.152 min  
 Lab File: VX044954.D  
 Acq: 14 Feb 2025 12:26

Instrument : MSVOA\_X  
 ClientSampleId : BP-VPB-192-EB-20250207

Tgt Ion: 75 Resp: 7493

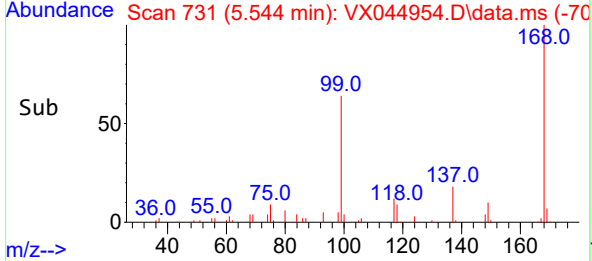
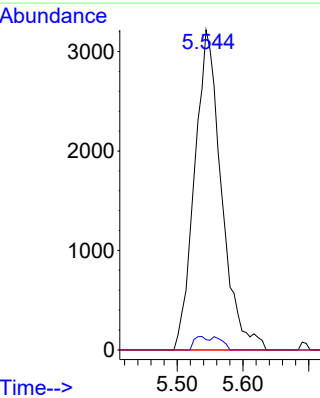
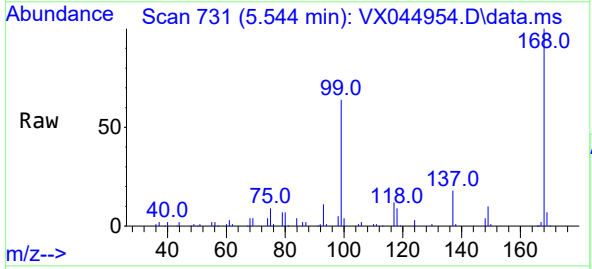
Ion	Ratio	Lower	Upper
75	100		
110	9.4	17.2	51.6#
77	0.0	24.6	37.0#



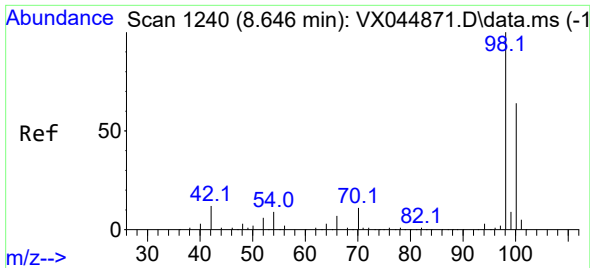
#38  
 Carbon Tetrachloride  
 Concen: 5.79 ug/l  
 RT: 5.544 min Scan# 731  
 Delta R.T. -0.128 min  
 Lab File: VX044954.D  
 Acq: 14 Feb 2025 12:26

Tgt Ion: 117 Resp: 9122

Ion	Ratio	Lower	Upper
117	100		
119	3.2	77.5	116.3#
121	0.0	25.6	38.4#

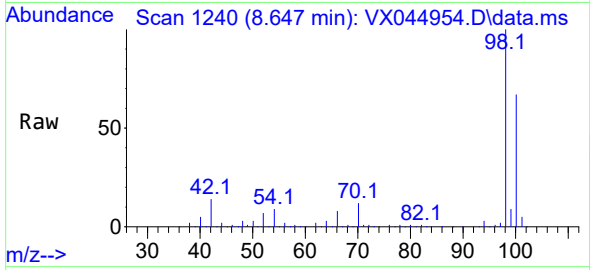




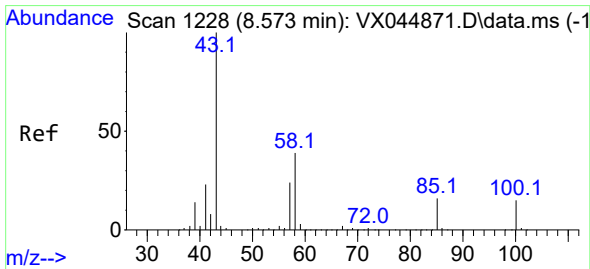
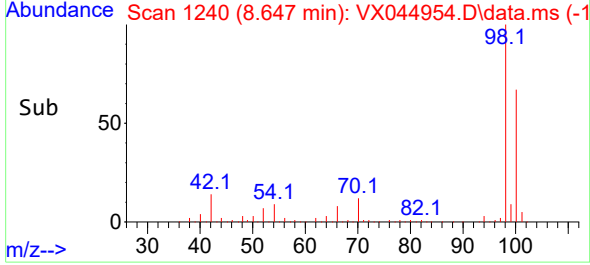
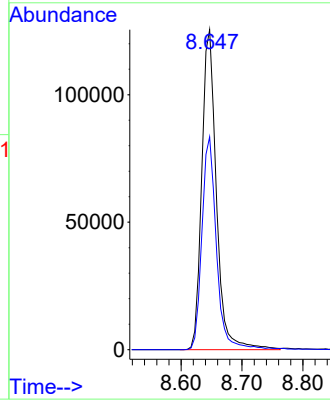


#50  
 Toluene-d8  
 Concen: 49.71 ug/l  
 RT: 8.647 min Scan# 11  
 Delta R.T. 0.000 min  
 Lab File: VX044954.D  
 Acq: 14 Feb 2025 12:26

Instrument : MSVOA\_X  
 ClientSampleId : BP-VPB-192-EB-20250207

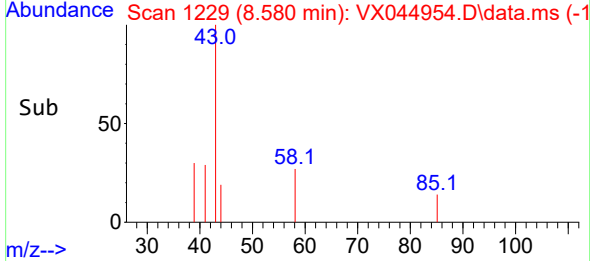
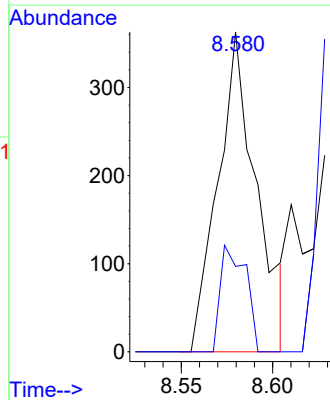
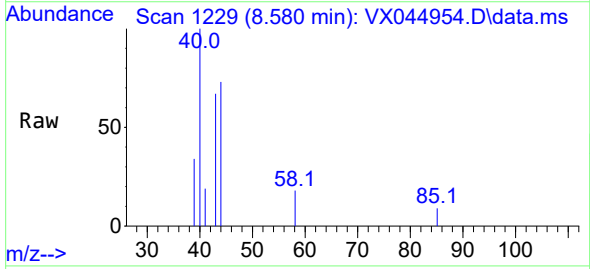


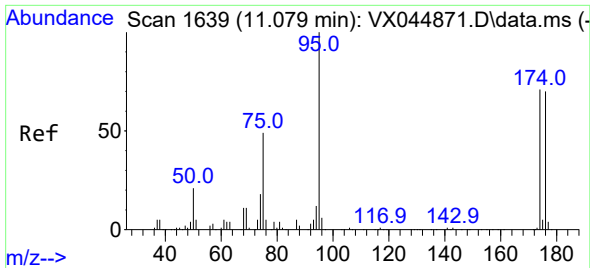
Tgt Ion: 98 Resp: 209395  
 Ion Ratio Lower Upper  
 98 100  
 100 66.5 52.7 79.1



#51  
 4-Methyl-2-Pentanone  
 Concen: 0.30 ug/l  
 RT: 8.580 min Scan# 1229  
 Delta R.T. 0.006 min  
 Lab File: VX044954.D  
 Acq: 14 Feb 2025 12:26

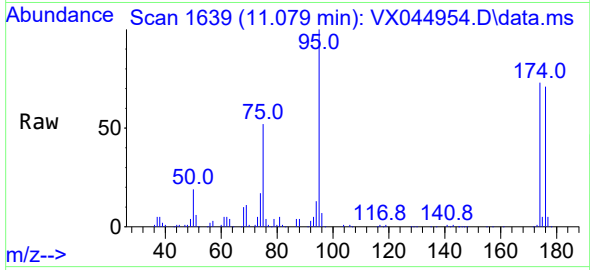
Tgt Ion: 43 Resp: 532  
 Ion Ratio Lower Upper  
 43 100  
 58 21.8 30.8 46.2#



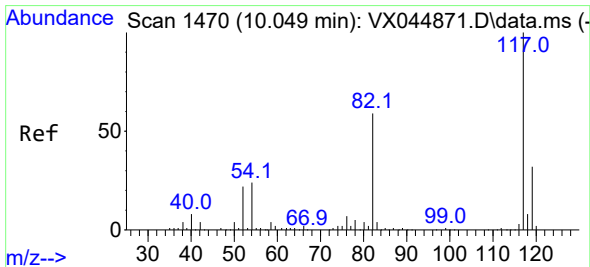
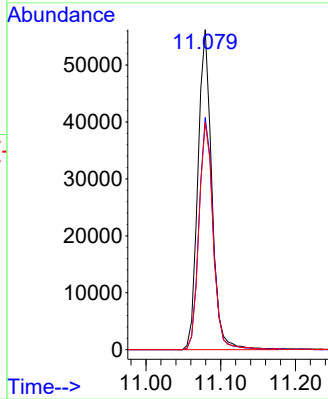
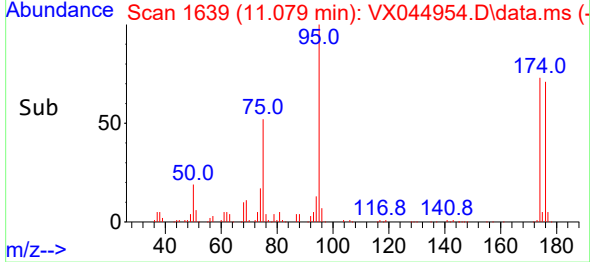


#62  
 4-Bromofluorobenzene  
 Concen: 51.21 ug/l  
 RT: 11.079 min Scan# 1639  
 Delta R.T. 0.000 min  
 Lab File: VX044954.D  
 Acq: 14 Feb 2025 12:26

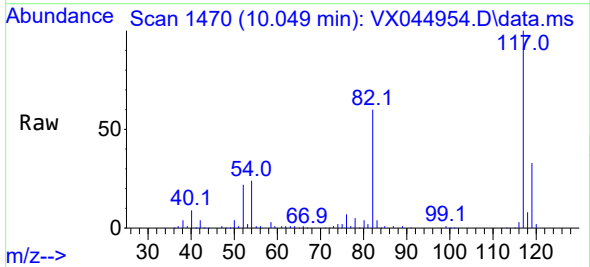
Instrument : MSVOA\_X  
 ClientSampleId : BP-VPB-192-EB-20250207



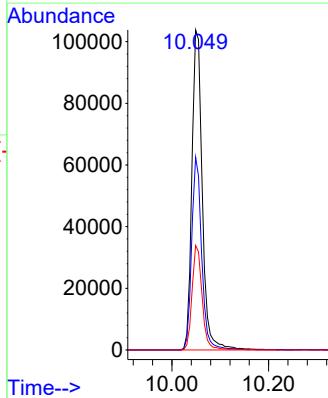
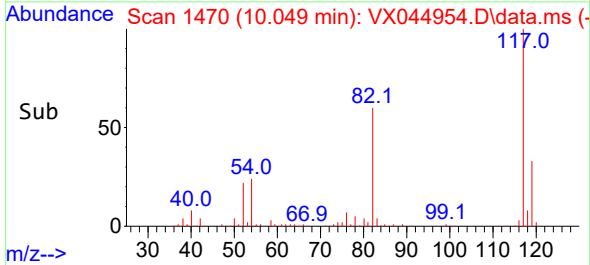
Tgt Ion: 95 Resp: 72716  
 Ion Ratio Lower Upper  
 95 100  
 174 73.6 0.0 142.6  
 176 72.2 0.0 141.6

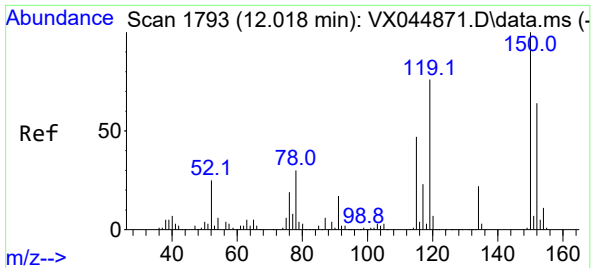


#63  
 Chlorobenzene-d5  
 Concen: 50.00 ug/l  
 RT: 10.049 min Scan# 1470  
 Delta R.T. 0.000 min  
 Lab File: VX044954.D  
 Acq: 14 Feb 2025 12:26



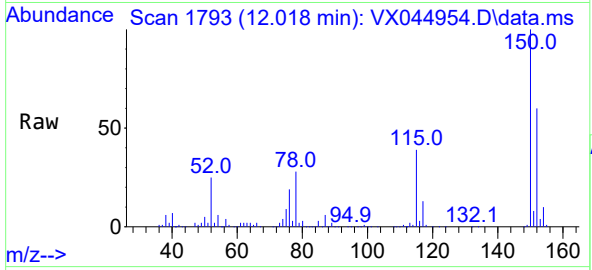
Tgt Ion: 117 Resp: 154790  
 Ion Ratio Lower Upper  
 117 100  
 82 60.2 47.5 71.3  
 119 32.6 25.4 38.0



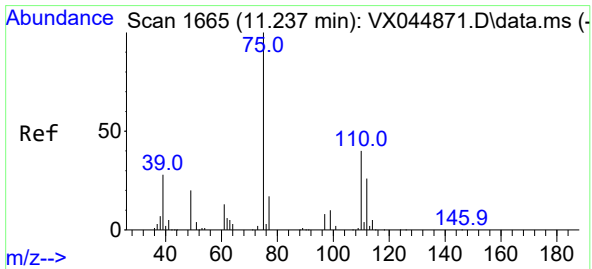
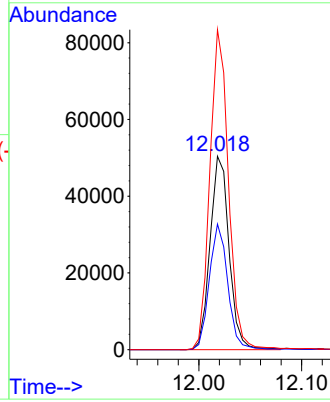
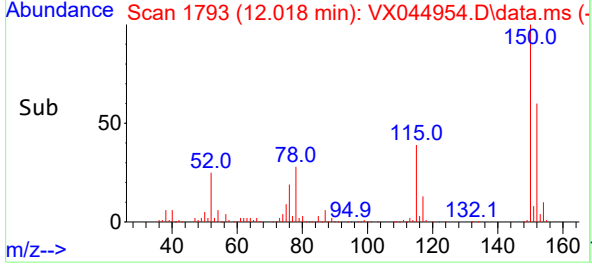


#72  
 1,4-Dichlorobenzene-d4  
 Concen: 50.00 ug/l  
 RT: 12.018 min Scan# 11  
 Delta R.T. 0.000 min  
 Lab File: VX044954.D  
 Acq: 14 Feb 2025 12:26

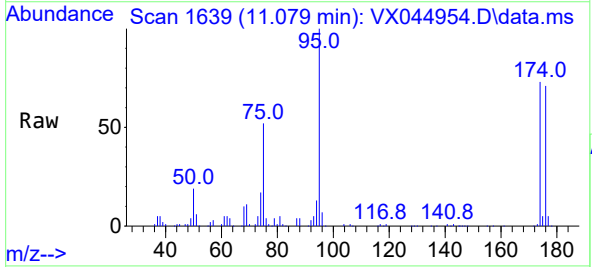
Instrument : MSVOA\_X  
 ClientSampleId : BP-VPB-192-EB-20250207



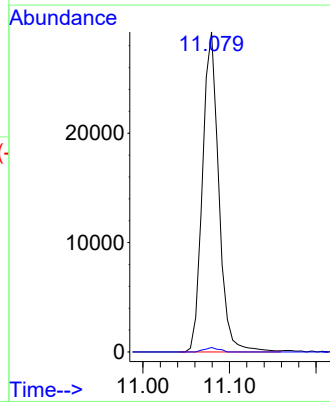
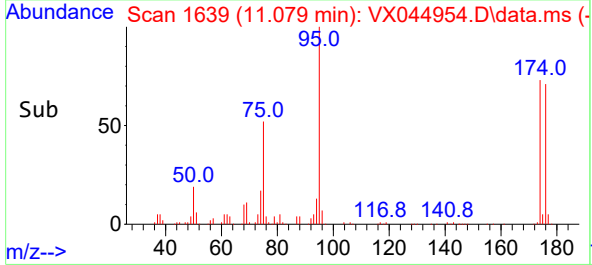
Tgt Ion:152 Resp: 64957  
 Ion Ratio Lower Upper  
 152 100  
 115 63.4 43.4 130.1  
 150 162.8 0.0 350.4

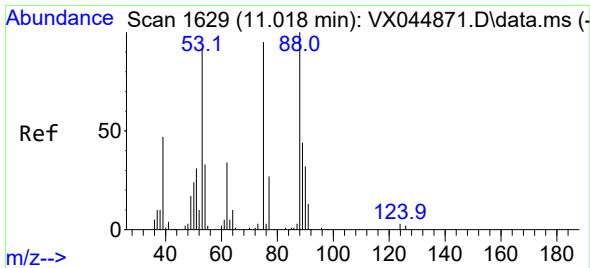


#76  
 1,2,3-Trichloropropane  
 Concen: 26.57 ug/l  
 RT: 11.079 min Scan# 1639  
 Delta R.T. -0.158 min  
 Lab File: VX044954.D  
 Acq: 14 Feb 2025 12:26



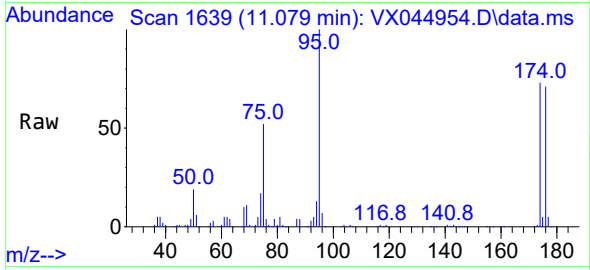
Tgt Ion: 75 Resp: 38265  
 Ion Ratio Lower Upper  
 75 100  
 77 1.2 21.9 65.7#





#81  
 trans-1,4-Dichloro-2-butene  
 Concen: 68.35 ug/l  
 RT: 11.079 min Scan# 10  
 Delta R.T. 0.061 min  
 Lab File: VX044954.D  
 Acq: 14 Feb 2025 12:26

Instrument :  
 MSVOA\_X  
 ClientSampleId :  
 BP-VPB-192-EB-20250207



Tgt Ion: 75 Resp: 38265

Ion	Ratio	Lower	Upper
75	100		
53	0.0	78.0	117.0#
89	0.0	36.6	54.8#

