

Data Path : Z:\VOASRV\HPCHEM1\MSVOA X\DATA\VX021420\
 Data File : VX014943.D
 Acq On : 14 Feb 2020 13:39
 Operator : JC/SP
 Sample : L1533-03
 Misc : 5.0mL/MSVOA X/WATER
 ALS Vial : 8 Sample Multiplier: 1

Instrument :
 MSVOA_X
 ClientSampleId :
 STORAGE-BLANK-WATER-REF-4

Integration Parameters: RTEINT.P
 Integrator: RTE
 Smoothing : ON Filtering: 5
 Sampling : 1 Min Area: 3 % of largest Peak
 Start Thrs: 0.2 Max Peaks: 100
 Stop Thrs : 0 Peak Location: TOP

If leading or trailing edge < 100 prefer < Baseline drop else tangent >
 Peak separation: 5

Method : Z:\VOASRV\HPCHEM1\MSVOA_X\METHOD\82X021020W.M
 Title : SW846 8260

Signal : TIC

peak #	R.T. min	first scan	max scan	last scan	PK TY	peak height	corr. area	corr. % max.	% of total
1	1.076	27	31	41	rBV	388798	485700	21.77%	3.819%
2	5.490	744	755	766	rBV	255812	724991	32.49%	5.700%
3	5.655	771	782	795	rVB	446450	1239588	55.55%	9.746%
4	6.051	835	847	858	rBV	279860	725213	32.50%	5.702%
5	6.849	969	978	991	rBV	684914	1590982	71.30%	12.509%
6	8.709	1277	1283	1292	rBV	1461504	2231349	100.00%	17.544%
7	10.105	1506	1512	1521	rBV	1487649	1999122	89.59%	15.718%
8	11.129	1675	1680	1694	rVB	1265696	1631966	73.14%	12.831%
9	12.074	1829	1835	1846	rBV	1670554	2089551	93.65%	16.429%

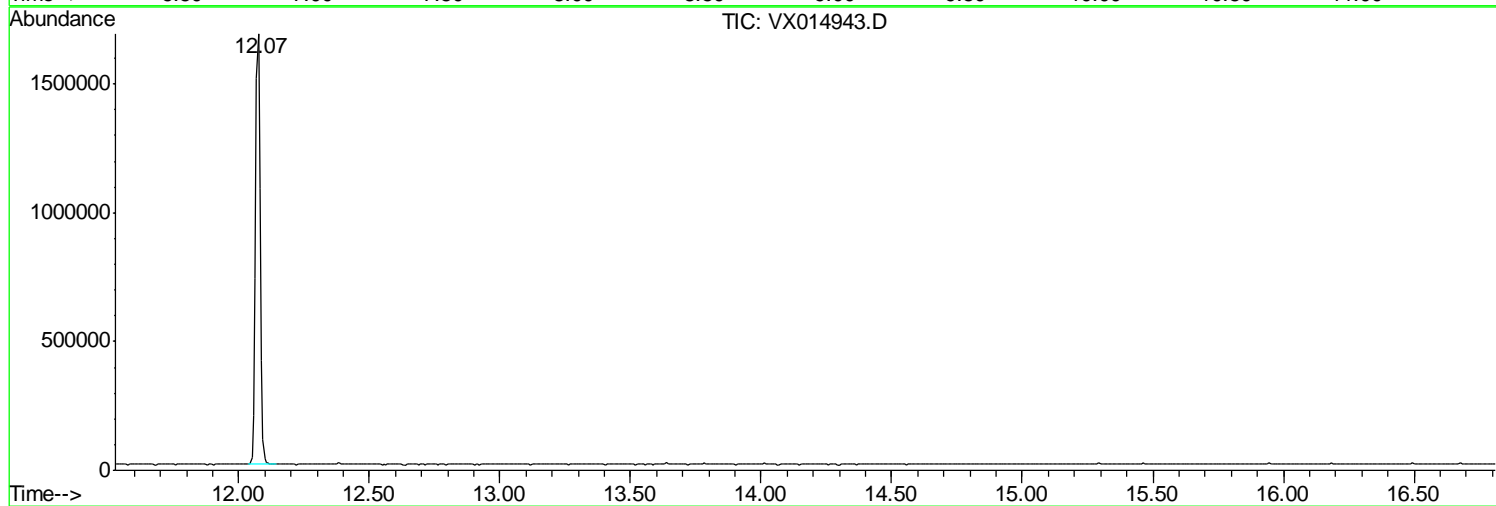
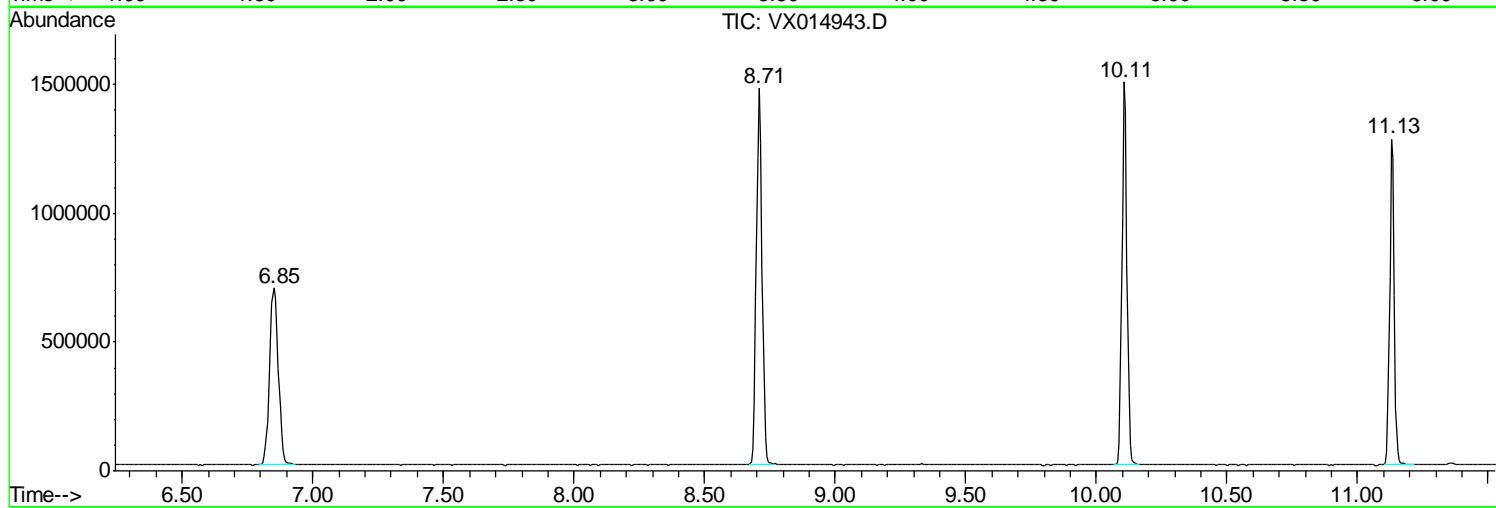
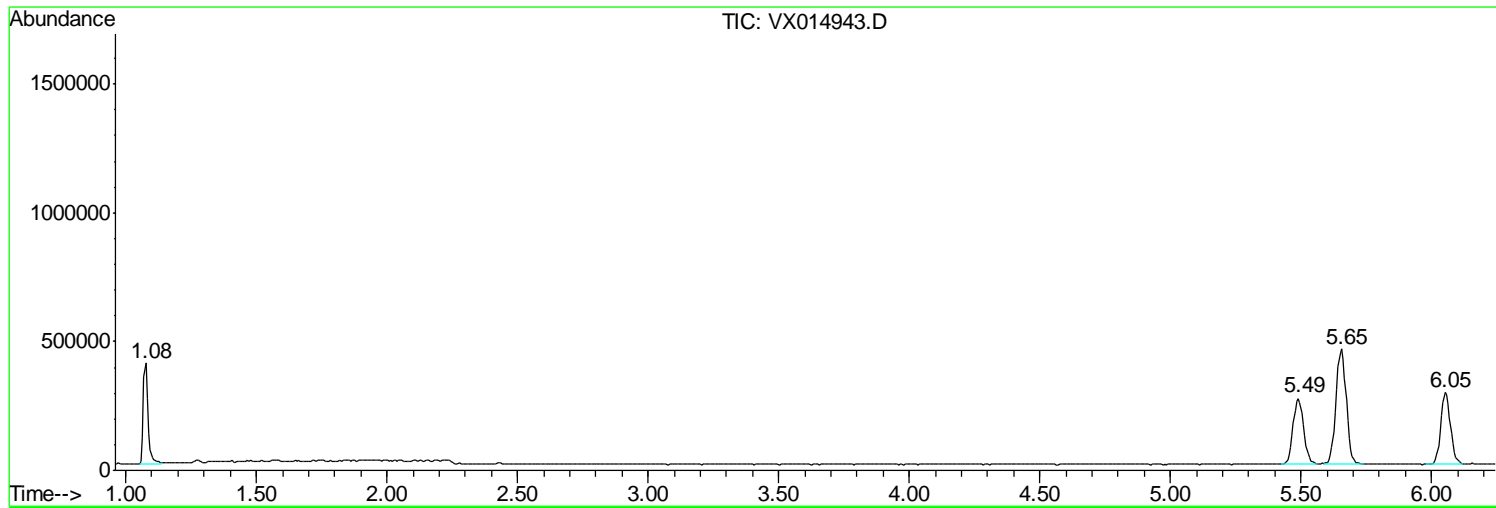
Sum of corrected areas: 12718462

Data Path : Z:\VOASRV\HPCHEM1\MSVOA X\DATA\VX021420\
Data File : VX014943.D
Acq On : 14 Feb 2020 13:39
Operator : JC/SP
Sample : L1533-03
Misc : 5.0mL/MSVOA X/WATER
ALS Vial : 8 Sample Multiplier: 1

Instrument :
MSVOA_X
ClientSampled :
STORAGE-BLANK-WATER-REF-4

Quant Method : Z:\VOASRV\HPCHEM1\MSVOA_X\METHOD\82X021020W.M
Quant Title : SW846 8260

TIC Library : C:\DATABASE\NIST11.L
TIC Integration Parameters: LSCINT.P



Data Path : Z:\VOASRV\HPCHEM1\MSVOA_X\DATA\VX021420\
Data File : VX014943.D
Acq On : 14 Feb 2020 13:39
Operator : JC/SP
Sample : L1533-03
Misc : 5.0mL/MSVOA_X/WATER
ALS Vial : 8 Sample Multiplier: 1

Instrument :
MSVOA_X
ClientSampleId :
STORAGE-BLANK-WATER-REF-4

Quant Method : Z:\VOASRV\HPCHEM1\MSVOA_X\METHOD\82X021020W.M
Quant Title : SW846 8260

TIC Library : C:\DATABASE\NIST11.L
TIC Integration Parameters: LSCINT.P

No Library Search Compounds Detected

Data Path : Z:\VOASRV\HPCHEM1\MSVOA_X\DATA\VX021420\
Data File : VX014943.D
Acq On : 14 Feb 2020 13:39
Operator : JC/SP
Sample : L1533-03
Misc : 5.0mL/MSVOA_X/WATER
ALS Vial : 8 Sample Multiplier: 1

Instrument :
MSVOA_X
ClientSampleId :
STORAGE-BLANK-WATER-REF-4

Quant Method : Z:\VOASRV\HPCHEM1\MSVOA_X\METHOD\82X021020W.M
Quant Title : SW846 8260

TIC Library : C:\DATABASE\NIST11.L
TIC Integration Parameters: LSCINT.P

TIC Top Hit name	RT	EstConc	Units	Response	--Internal Standard--			
					#	RT	Resp	Conc
