

Data Path : Z:\voasrv\HPCHEM1\MSVOA_X\Data\VX021424\
 Data File : VX040218.D
 Acq On : 14 Feb 2024 14:24
 Operator : JC/MD
 Sample : IBLK
 Misc : 5.0mL/MSVOA_X/WATER
 ALS Vial : 7 Sample Multiplier: 1

Instrument :
 MSVOA_X
 ClientSampleId :
 IBLK

Quant Time: Feb 15 00:02:41 2024
 Quant Method : Z:\voasrv\HPCHEM1\MSVOA_X\Method\82X020924W.M
 Quant Title : SW846 8260
 QLast Update : Mon Feb 12 00:21:14 2024
 Response via : Initial Calibration

Compound	R.T.	QIon	Response	Conc	Units	Dev(Min)

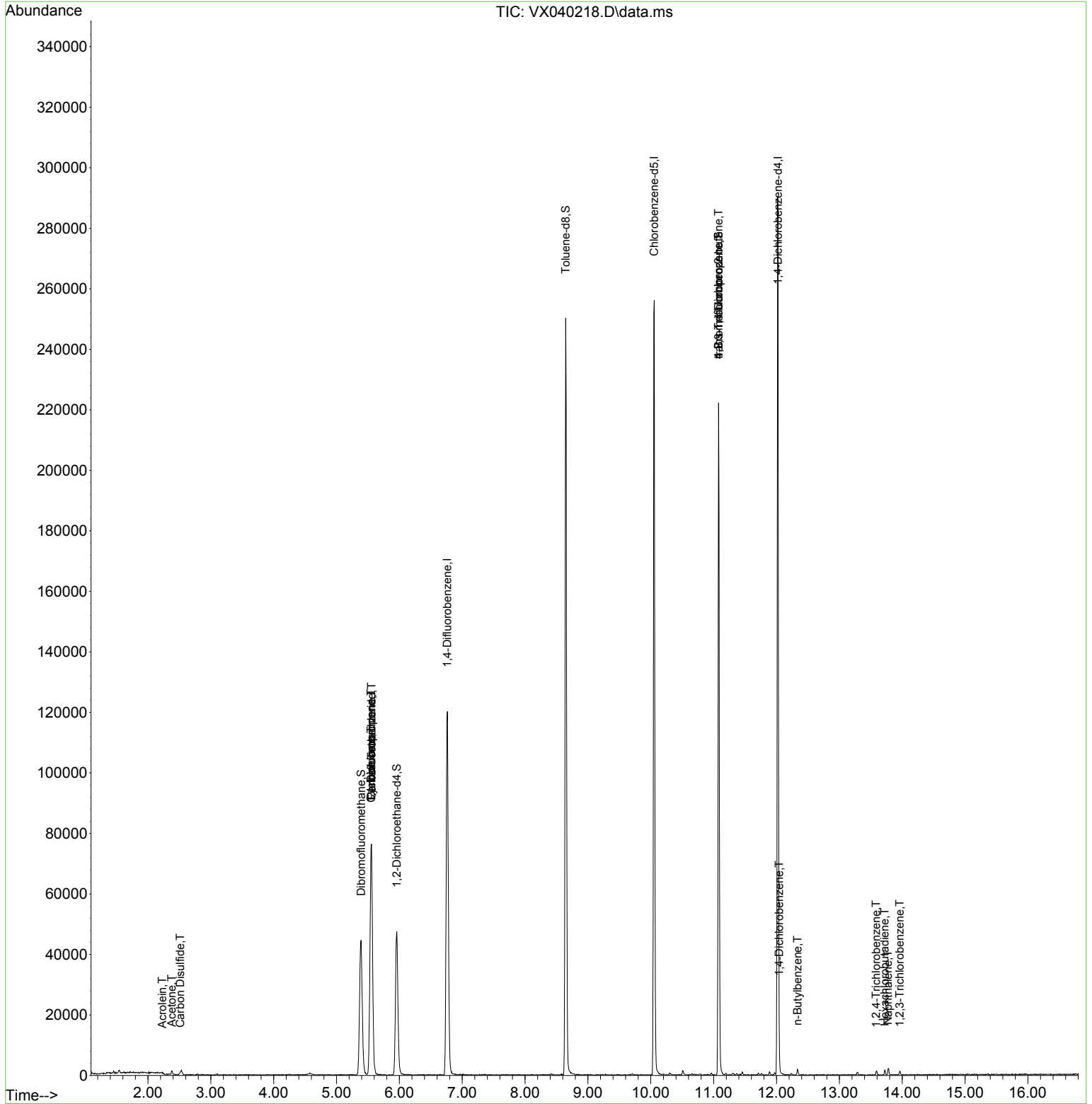
Internal Standards						
1) Pentafluorobenzene	5.556	168	73307	50.000	ug/l	0.00
34) 1,4-Difluorobenzene	6.763	114	124334	50.000	ug/l	0.00
63) Chlorobenzene-d5	10.055	117	118305	50.000	ug/l	0.00
72) 1,4-Dichlorobenzene-d4	12.024	152	62087	50.000	ug/l	0.00
System Monitoring Compounds						
33) 1,2-Dichloroethane-d4	5.958	65	45770	41.968	ug/l	0.00
Spiked Amount	50.000	Range 78 - 117	Recovery	=	83.940%	
35) Dibromofluoromethane	5.391	113	39652	45.667	ug/l	0.00
Spiked Amount	50.000	Range 75 - 124	Recovery	=	91.340%	
50) Toluene-d8	8.647	98	146123	44.989	ug/l	0.00
Spiked Amount	50.000	Range 92 - 112	Recovery	=	89.980%#	
62) 4-Bromofluorobenzene	11.079	95	59011	44.548	ug/l	0.00
Spiked Amount	50.000	Range 83 - 123	Recovery	=	89.100%	
Target Compounds						
						Qvalue
13) Acrolein	2.227	56	44	0.224	ug/l #	33
16) Acetone	2.379	43	1100	2.456	ug/l #	66
17) Carbon Disulfide	2.514	76	813	0.411	ug/l #	76
20) Methylene Chloride	2.788	84	98	Below Cal	#	39
31) Cyclohexane	5.550	56	1694	1.302	ug/l #	6
36) 1,1-Dichloropropene	5.550	75	5748	4.726	ug/l #	51
38) Carbon Tetrachloride	5.556	117	7602	6.573	ug/l #	13
76) 1,2,3-Trichloropropane	11.079	75	29347	23.342	ug/l #	38
81) trans-1,4-Dichloro-2-b...	11.079	75	29347	64.442	ug/l #	5
88) 1,4-Dichlorobenzene	12.042	146	542	0.250	ug/l #	1
89) n-Butylbenzene	12.335	91	823	0.224	ug/l	97
93) 1,2,4-Trichlorobenzene	13.585	180	455	0.335	ug/l	90
94) Hexachlorobutadiene	13.719	225	368	0.680	ug/l	84
95) Naphthalene	13.774	128	1756	0.410	ug/l	96
96) 1,2,3-Trichlorobenzene	13.963	180	432	0.334	ug/l	81

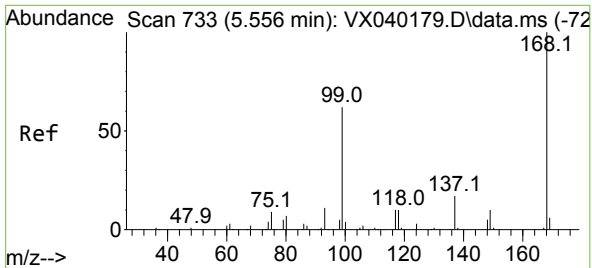
(#) = qualifier out of range (m) = manual integration (+) = signals summed

Data Path : Z:\voasrv\HPCHEM1\MSVOA_X\Data\VX021424\
Data File : VX040218.D
Acq On : 14 Feb 2024 14:24
Operator : JC/MD
Sample : IBLK
Misc : 5.0mL/MSVOA_X/WATER
ALS Vial : 7 Sample Multiplier: 1

Instrument :
MSVOA_X
ClientSampleId :
IBLK

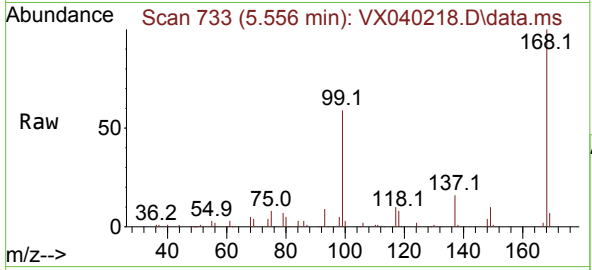
Quant Time: Feb 15 00:02:41 2024
Quant Method : Z:\voasrv\HPCHEM1\MSVOA_X\Method\82X020924W.M
Quant Title : SW846 8260
QLast Update : Mon Feb 12 00:21:14 2024
Response via : Initial Calibration



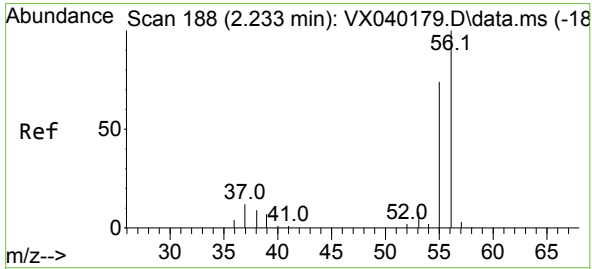
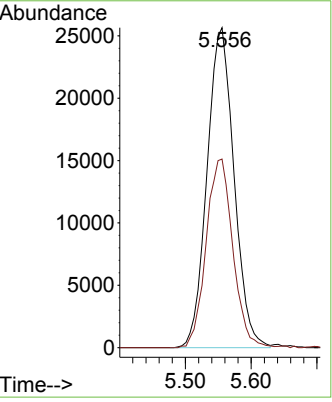
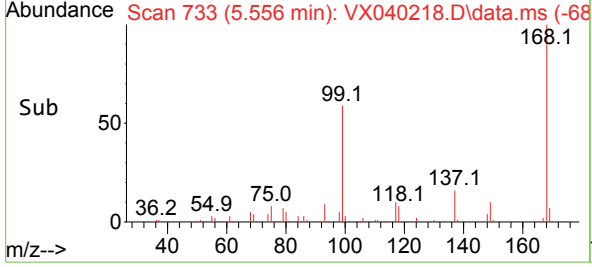


#1
 Pentafluorobenzene
 Concen: 50.000 ug/l
 RT: 5.556 min Scan# 71
 Delta R.T. 0.006 min
 Lab File: VX040218.D
 Acq: 14 Feb 2024 14:24

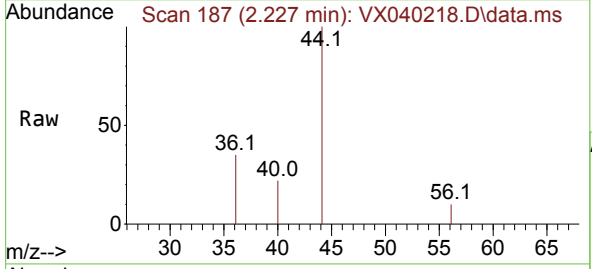
Instrument : MSVOA_X
 ClientSampleId : IBLK



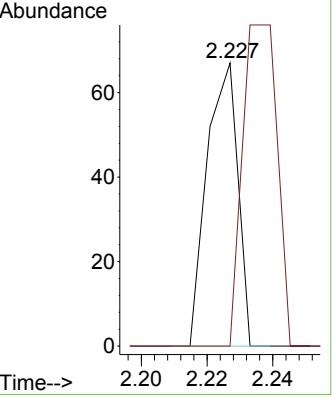
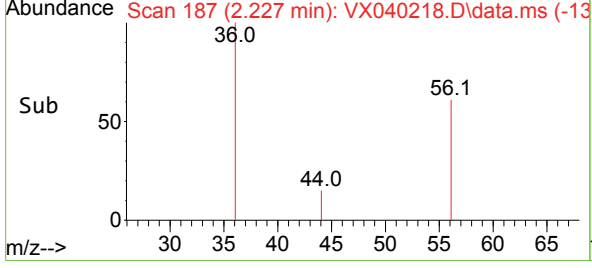
Tgt Ion:168 Resp: 73307
 Ion Ratio Lower Upper
 168 100
 99 59.0 56.6 85.0

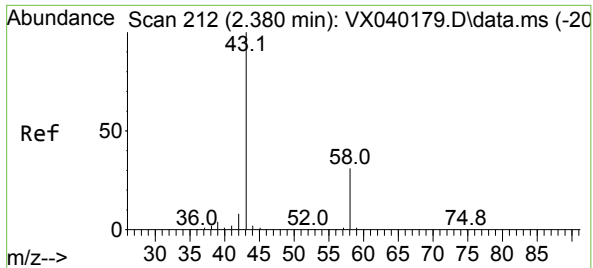


#13
 Acrolein
 Concen: 0.224 ug/l
 RT: 2.227 min Scan# 187
 Delta R.T. -0.006 min
 Lab File: VX040218.D
 Acq: 14 Feb 2024 14:24



Tgt Ion: 56 Resp: 44
 Ion Ratio Lower Upper
 56 100
 55 127.3 57.1 85.7#

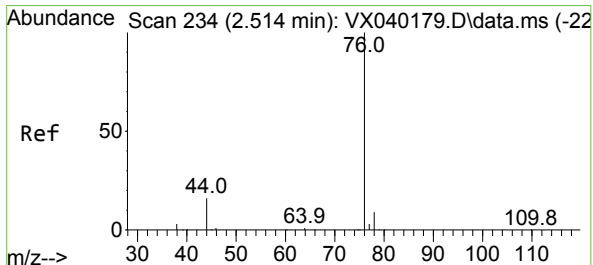
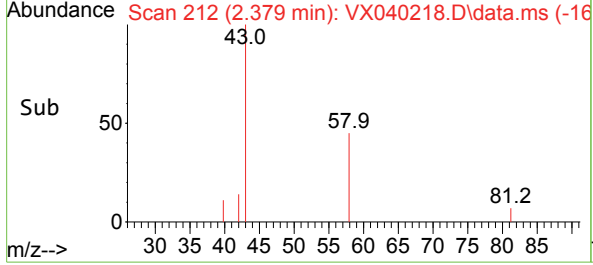
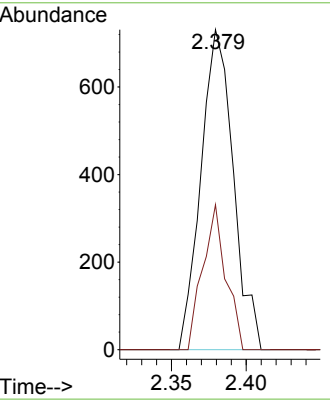
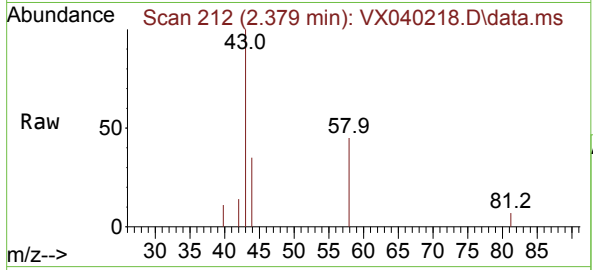




#16
 Acetone
 Concen: 2.456 ug/l
 RT: 2.379 min Scan# 212
 Delta R.T. -0.000 min
 Lab File: VX040218.D
 Acq: 14 Feb 2024 14:24

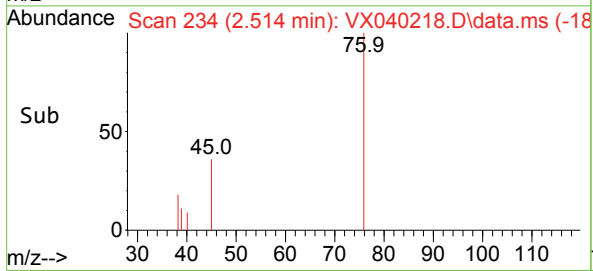
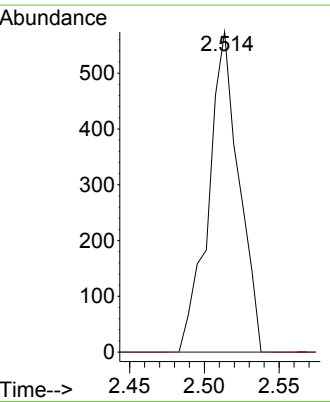
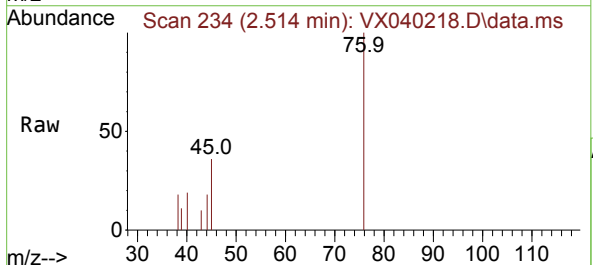
Instrument : MSVOA_X
 ClientSampleId : IBLK

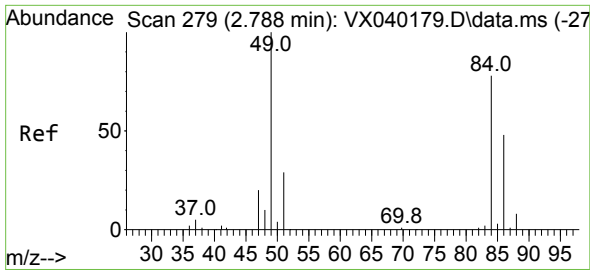
Tgt Ion	Resp	Ion Ratio	Lower	Upper
43	1100	100		
58		45.3	21.9	32.9#



#17
 Carbon Disulfide
 Concen: 0.411 ug/l
 RT: 2.514 min Scan# 234
 Delta R.T. 0.006 min
 Lab File: VX040218.D
 Acq: 14 Feb 2024 14:24

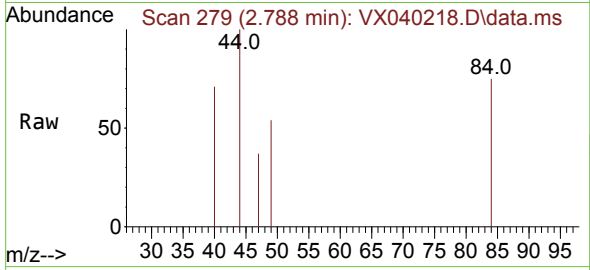
Tgt Ion	Resp	Ion Ratio	Lower	Upper
76	813	100		
78		0.0	7.0	10.6#





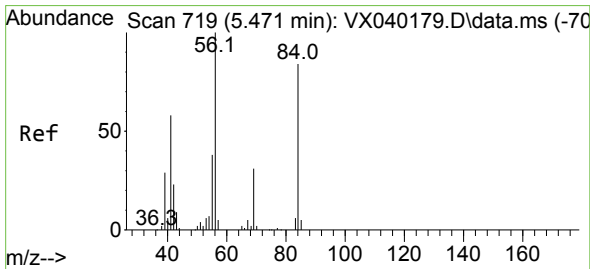
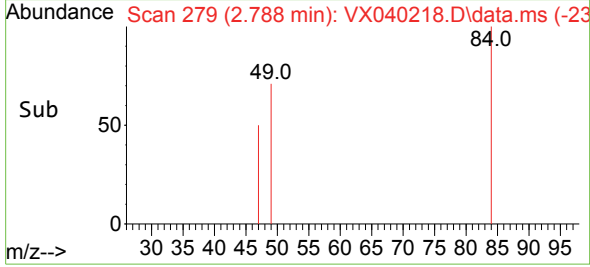
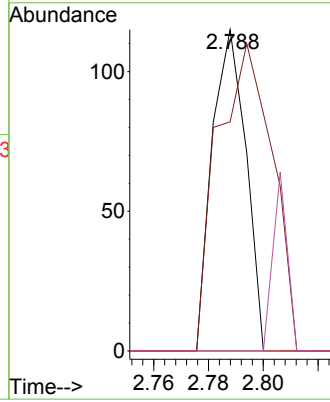
#20
 Methylene Chloride
 Concen: Below Cal
 RT: 2.788 min Scan# 21
 Delta R.T. -0.000 min
 Lab File: VX040218.D
 Acq: 14 Feb 2024 14:24

Instrument :
 MSVOA_X
 ClientSampleId :
 IBLK



Tgt Ion: 84 Resp: 98

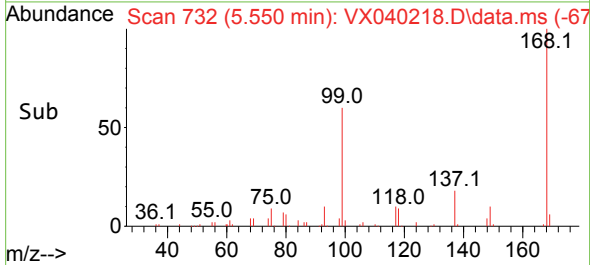
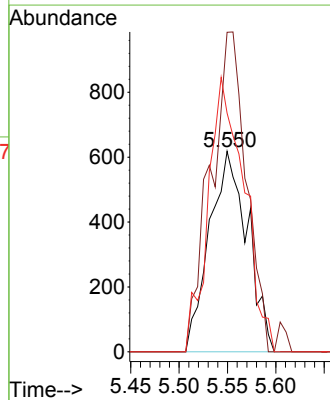
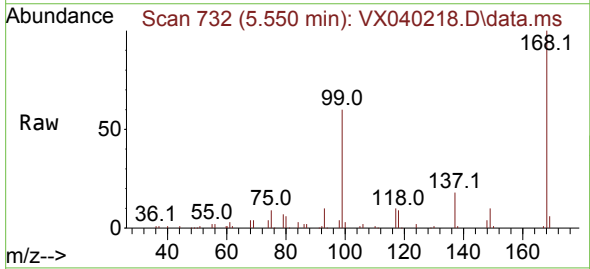
Ion	Ratio	Lower	Upper
84	100		
49	71.3	103.6	155.4#
51	0.0	33.8	50.6#
86	0.0	49.4	74.0#

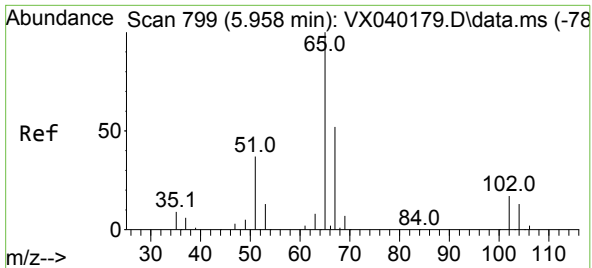


#31
 Cyclohexane
 Concen: 1.302 ug/l
 RT: 5.550 min Scan# 732
 Delta R.T. 0.079 min
 Lab File: VX040218.D
 Acq: 14 Feb 2024 14:24

Tgt Ion: 56 Resp: 1694

Ion	Ratio	Lower	Upper
56	100		
69	159.4	23.4	35.2#
84	119.1	65.9	98.9#

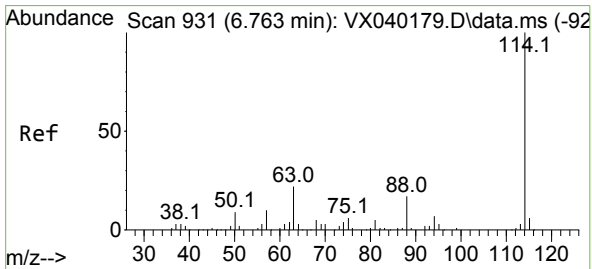
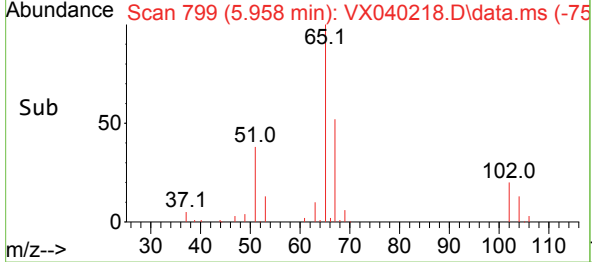
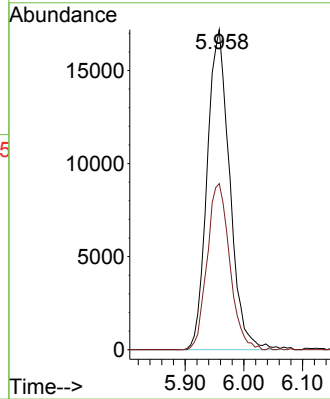
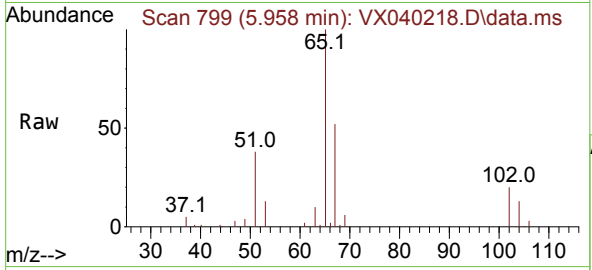




#33
 1,2-Dichloroethane-d4
 Concen: 41.968 ug/l
 RT: 5.958 min Scan# 799
 Delta R.T. -0.000 min
 Lab File: VX040218.D
 Acq: 14 Feb 2024 14:24

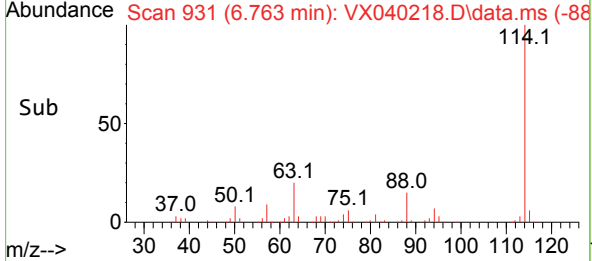
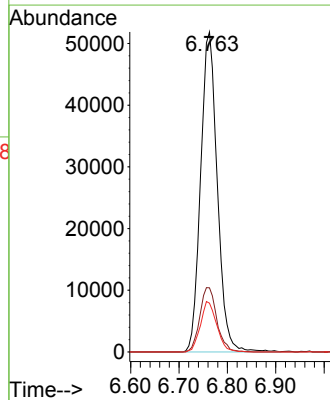
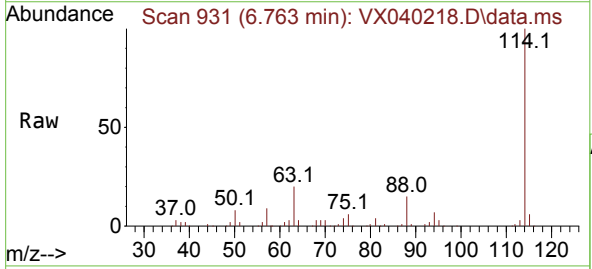
Instrument : MSVOA_X
 ClientSampleId : IBLK

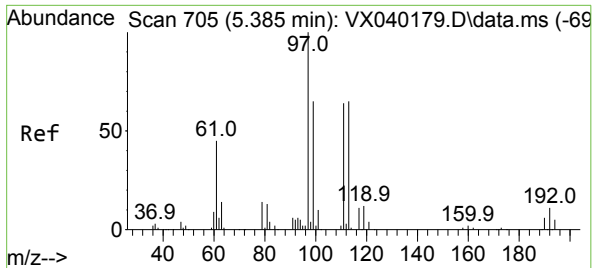
Tgt Ion: 65 Resp: 45770
 Ion Ratio Lower Upper
 65 100
 67 52.0 0.0 100.2



#34
 1,4-Difluorobenzene
 Concen: 50.000 ug/l
 RT: 6.763 min Scan# 931
 Delta R.T. -0.000 min
 Lab File: VX040218.D
 Acq: 14 Feb 2024 14:24

Tgt Ion: 114 Resp: 124334
 Ion Ratio Lower Upper
 114 100
 63 20.1 0.0 45.0
 88 15.2 0.0 36.6



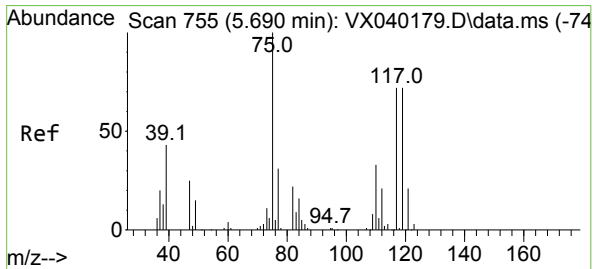
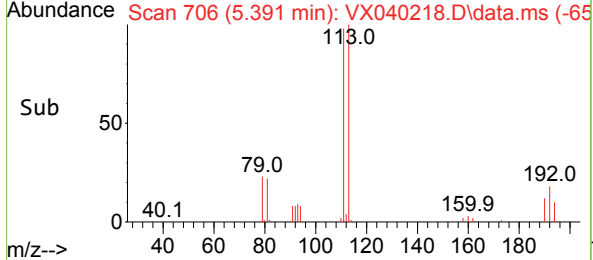
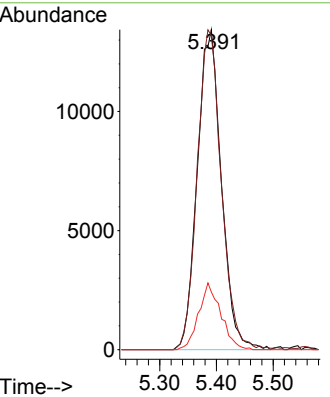
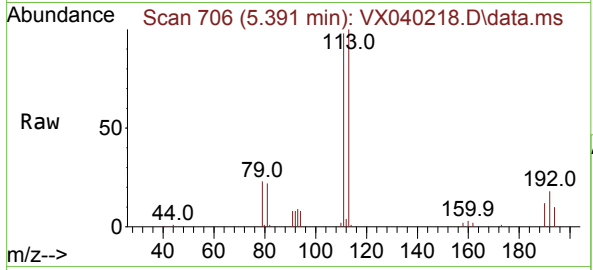


#35
 Dibromofluoromethane
 Concen: 45.667 ug/l
 RT: 5.391 min Scan# 705
 Delta R.T. 0.006 min
 Lab File: VX040218.D
 Acq: 14 Feb 2024 14:24

Instrument : MSVOA_X
 ClientSampleId : IBLK

Tgt Ion:113 Resp: 39652

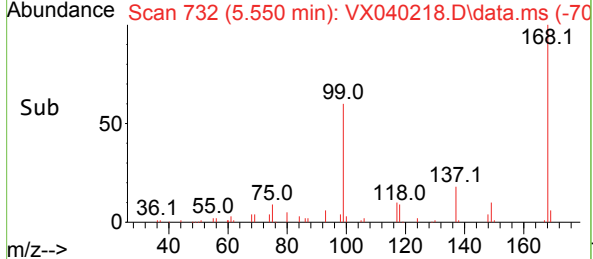
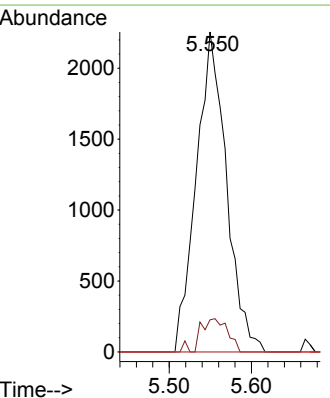
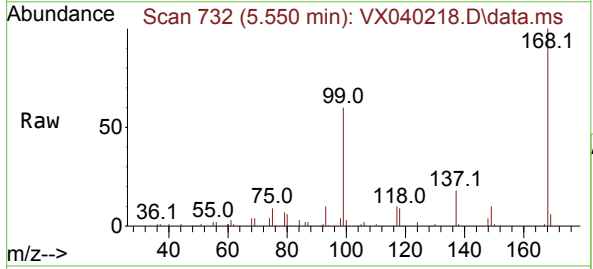
Ion	Ratio	Lower	Upper
113	100		
111	100.1	82.9	124.3
192	19.1	13.3	19.9

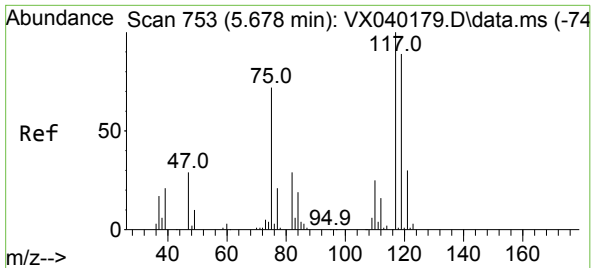


#36
 1,1-Dichloropropene
 Concen: 4.726 ug/l
 RT: 5.550 min Scan# 732
 Delta R.T. -0.146 min
 Lab File: VX040218.D
 Acq: 14 Feb 2024 14:24

Tgt Ion: 75 Resp: 5748

Ion	Ratio	Lower	Upper
75	100		
110	9.4	17.0	50.9#
77	0.0	24.7	37.1#

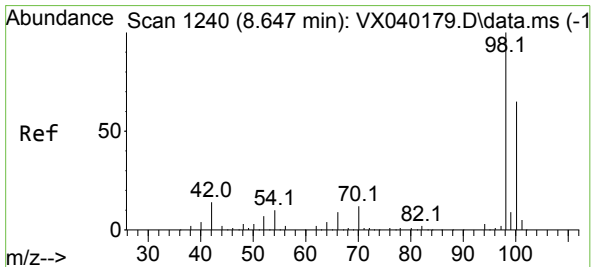
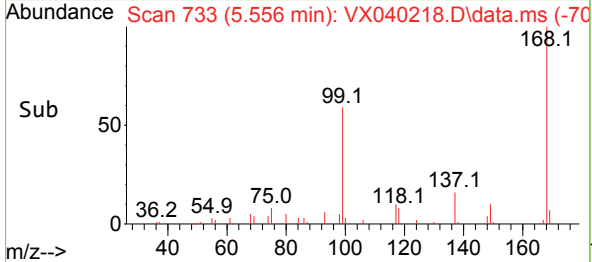
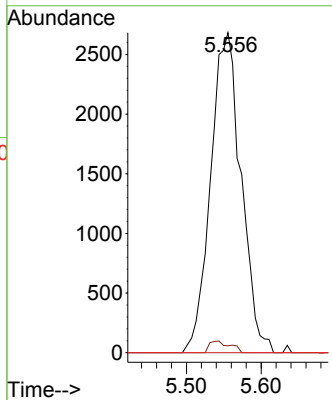
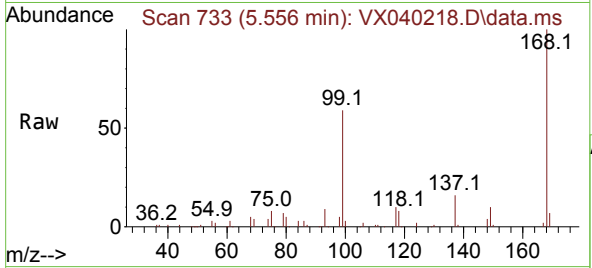




#38
 Carbon Tetrachloride
 Concen: 6.573 ug/l
 RT: 5.556 min Scan# 711
 Delta R.T. -0.116 min
 Lab File: VX040218.D
 Acq: 14 Feb 2024 14:24

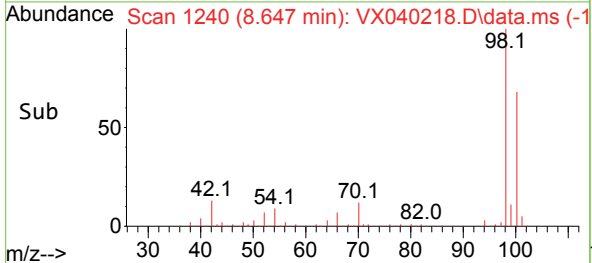
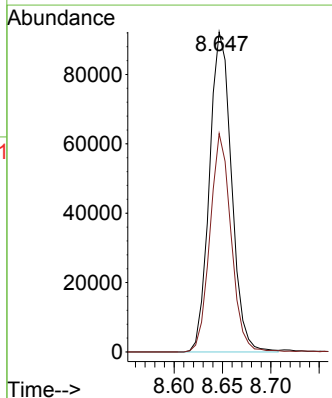
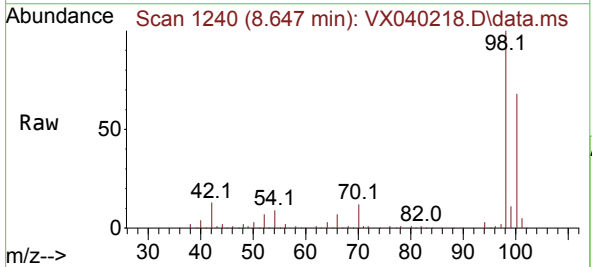
Instrument :
 MSVOA_X
 ClientSampleId :
 IBLK

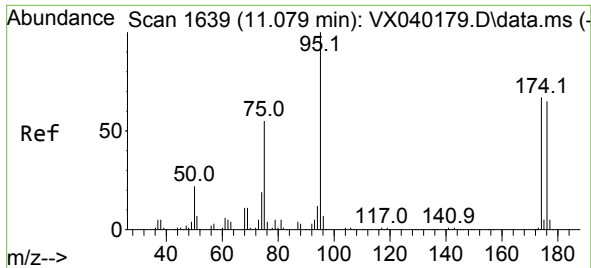
Tgt Ion:117 Resp: 7602
 Ion Ratio Lower Upper
 117 100
 119 2.2 78.2 117.2#
 121 0.0 24.4 36.6#



#50
 Toluene-d8
 Concen: 44.989 ug/l
 RT: 8.647 min Scan# 1240
 Delta R.T. -0.006 min
 Lab File: VX040218.D
 Acq: 14 Feb 2024 14:24

Tgt Ion: 98 Resp: 146123
 Ion Ratio Lower Upper
 98 100
 100 65.4 53.1 79.7

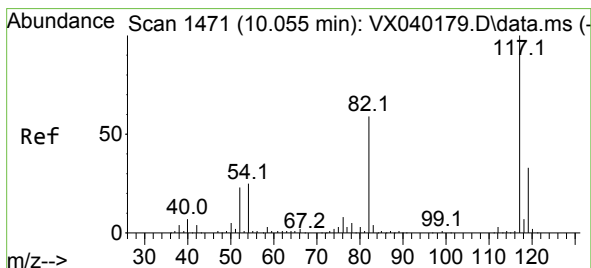
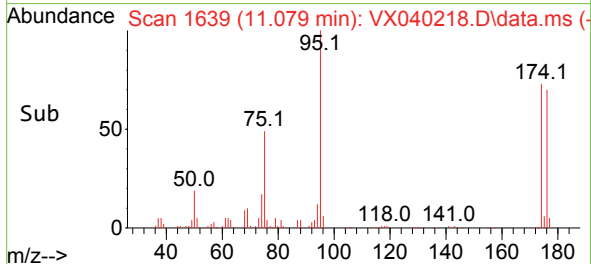
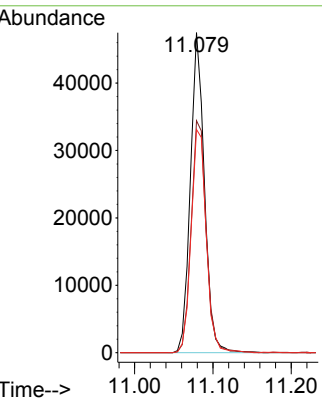
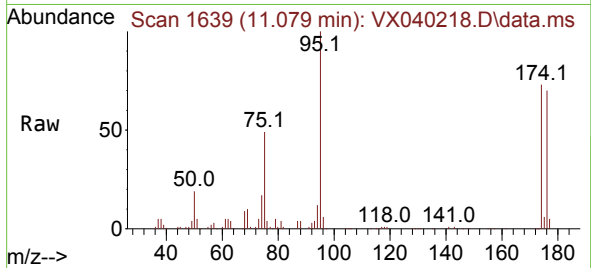




#62
 4-Bromofluorobenzene
 Concen: 44.548 ug/l
 RT: 11.079 min Scan# 1
 Delta R.T. -0.000 min
 Lab File: VX040218.D
 Acq: 14 Feb 2024 14:24

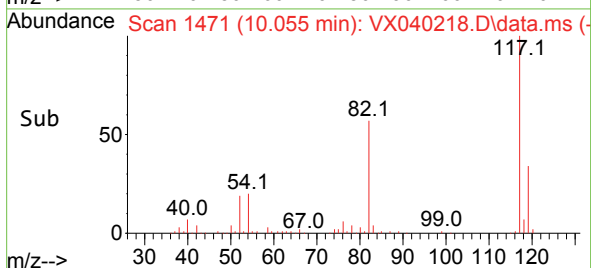
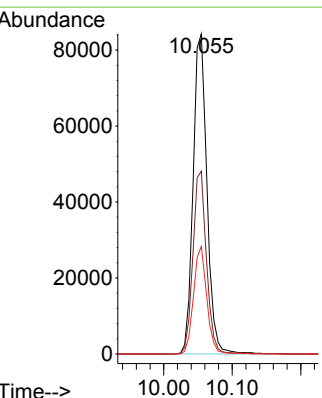
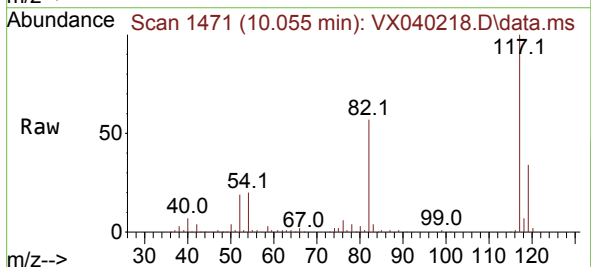
Instrument :
 MSVOA_X
 ClientSampleId :
 IBLK

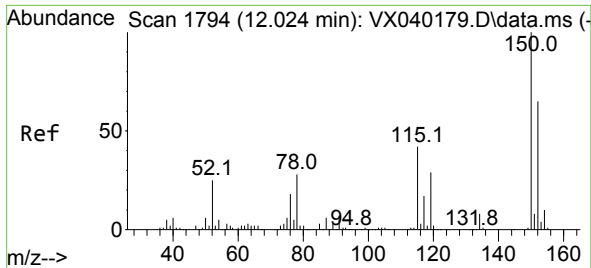
Tgt Ion: 95 Resp: 59011
 Ion Ratio Lower Upper
 95 100
 174 77.8 0.0 135.6
 176 75.0 0.0 131.0



#63
 Chlorobenzene-d5
 Concen: 50.000 ug/l
 RT: 10.055 min Scan# 1471
 Delta R.T. -0.000 min
 Lab File: VX040218.D
 Acq: 14 Feb 2024 14:24

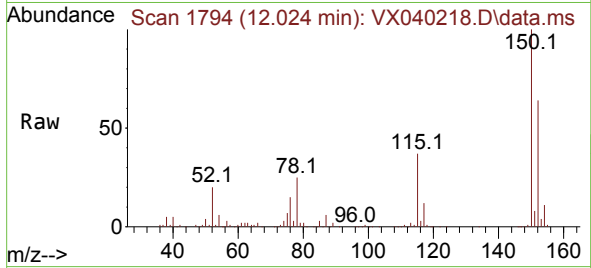
Tgt Ion: 117 Resp: 118305
 Ion Ratio Lower Upper
 117 100
 82 57.2 46.2 69.4
 119 33.6 25.5 38.3



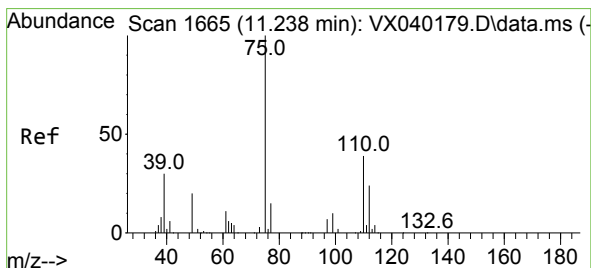
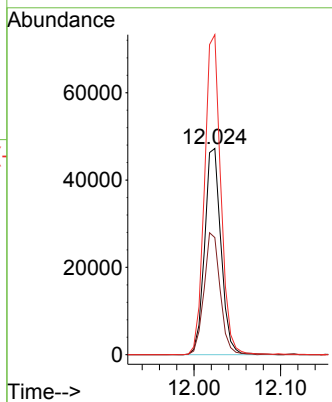
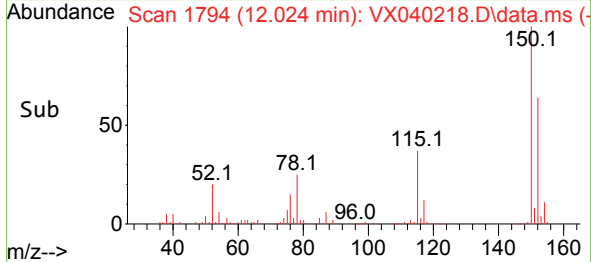


#72
 1,4-Dichlorobenzene-d4
 Concen: 50.000 ug/l
 RT: 12.024 min Scan# 11
 Delta R.T. -0.000 min
 Lab File: VX040218.D
 Acq: 14 Feb 2024 14:24

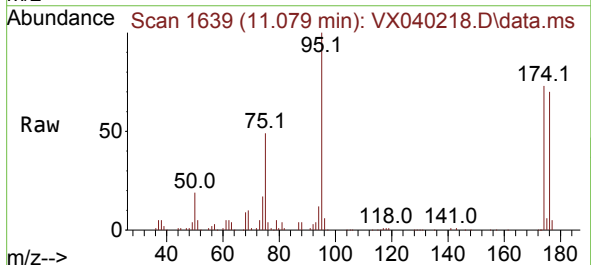
Instrument :
 MSVOA_X
 ClientSampleId :
 IBLK



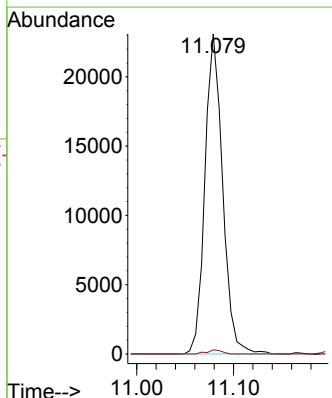
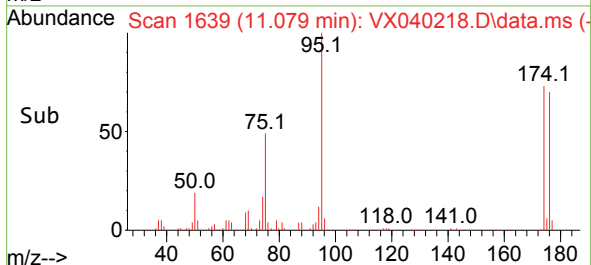
Tgt Ion:152 Resp: 62087
 Ion Ratio Lower Upper
 152 100
 115 58.3 43.3 129.9
 150 153.8 0.0 345.0

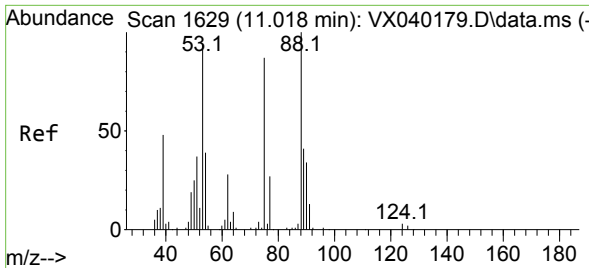


#76
 1,2,3-Trichloropropane
 Concen: 23.342 ug/l
 RT: 11.079 min Scan# 1639
 Delta R.T. -0.159 min
 Lab File: VX040218.D
 Acq: 14 Feb 2024 14:24



Tgt Ion: 75 Resp: 29347
 Ion Ratio Lower Upper
 75 100
 77 1.1 19.1 57.5#



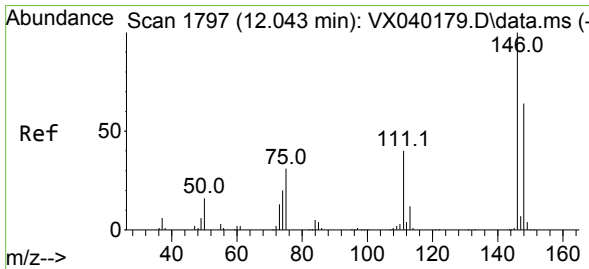
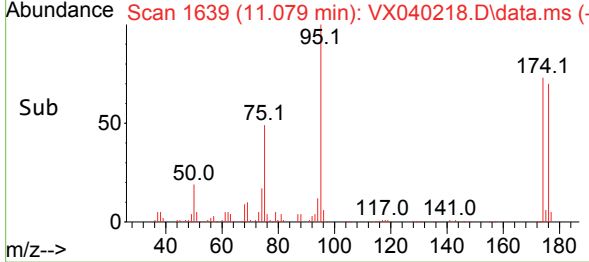
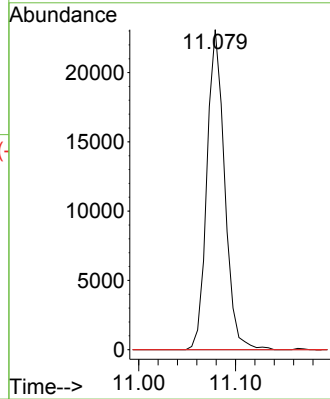
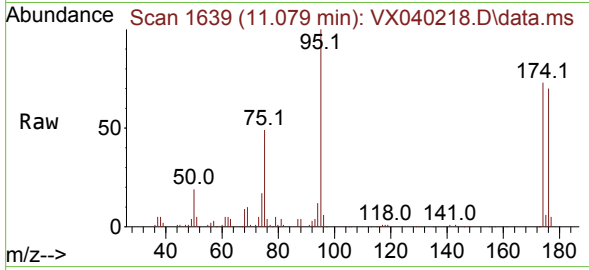


#81
 trans-1,4-Dichloro-2-butene
 Concen: 64.442 ug/l
 RT: 11.079 min Scan# 1639
 Delta R.T. 0.061 min
 Lab File: VX040218.D
 Acq: 14 Feb 2024 14:24

Instrument :
 MSVOA_X
 ClientSampleId :
 IBLK

Tgt Ion: 75 Resp: 29347

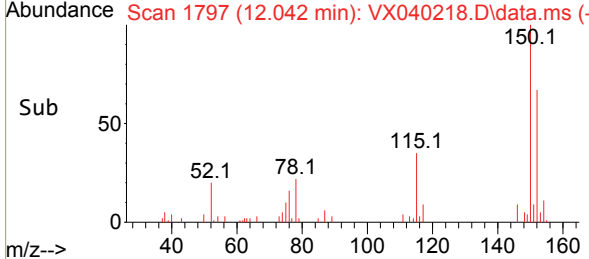
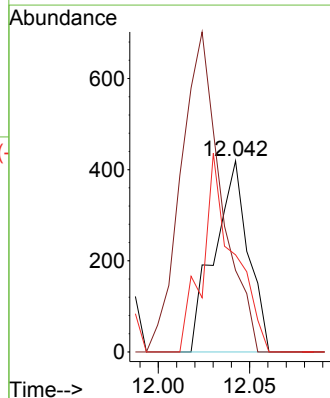
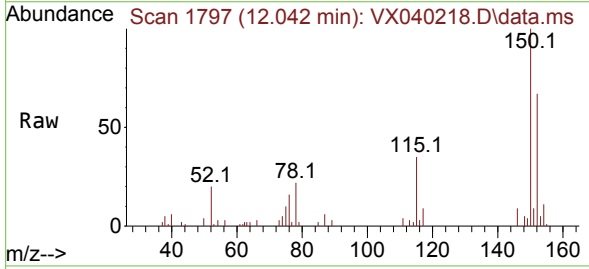
Ion	Ratio	Lower	Upper
75	100		
53	0.0	90.5	135.7#
89	0.0	36.9	55.3#

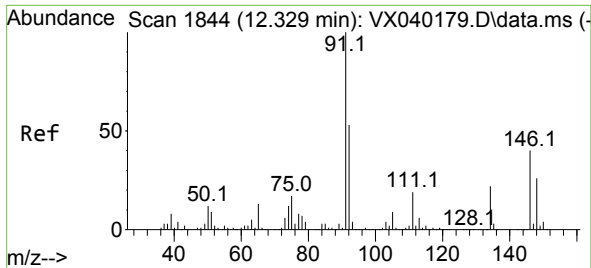


#88
 1,4-Dichlorobenzene
 Concen: 0.250 ug/l
 RT: 12.042 min Scan# 1797
 Delta R.T. -0.000 min
 Lab File: VX040218.D
 Acq: 14 Feb 2024 14:24

Tgt Ion: 146 Resp: 542

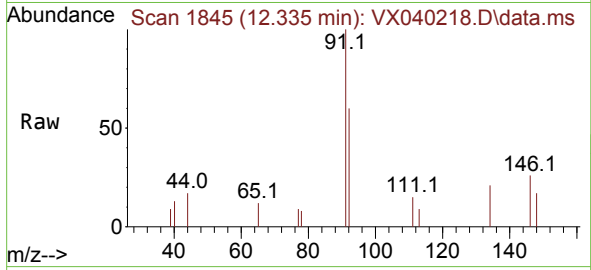
Ion	Ratio	Lower	Upper
146	100		
111	198.5	21.3	63.7#
148	95.4	31.8	95.4





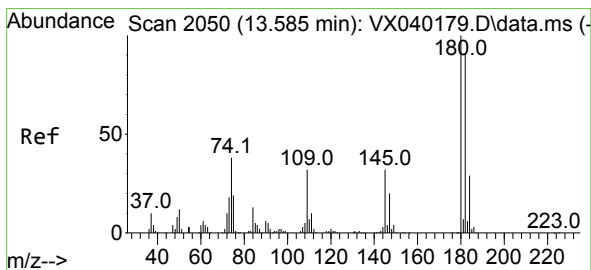
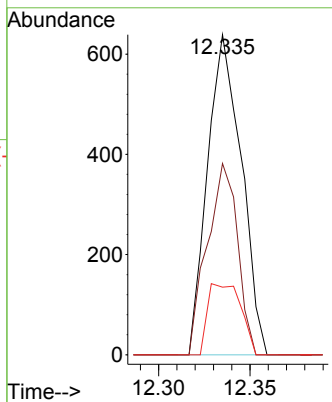
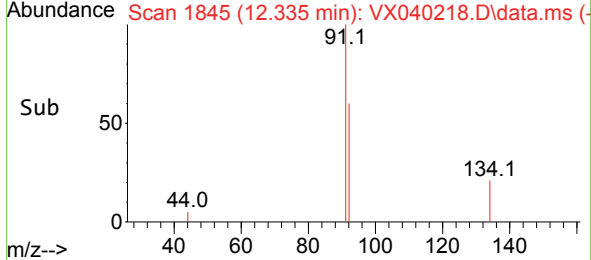
#89
 n-Butylbenzene
 Concen: 0.224 ug/l
 RT: 12.335 min Scan# 1845
 Delta R.T. -0.000 min
 Lab File: VX040218.D
 Acq: 14 Feb 2024 14:24

Instrument : MSVOA_X
 ClientSampleId : IBLK

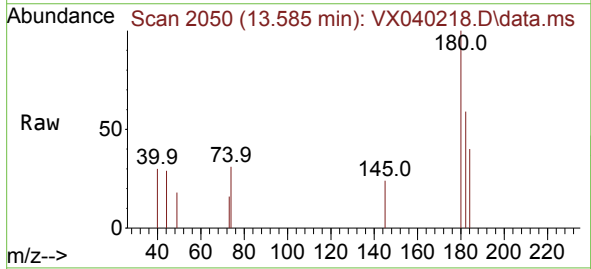


Tgt Ion: 91 Resp: 823

Ion	Ratio	Lower	Upper
91	100		
92	53.6	27.4	82.0
134	21.7	12.6	37.8

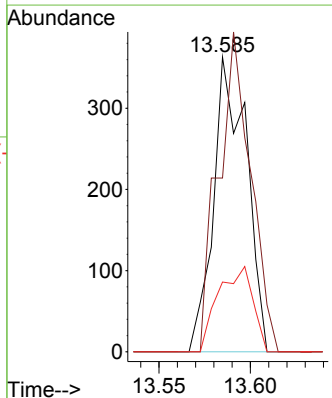
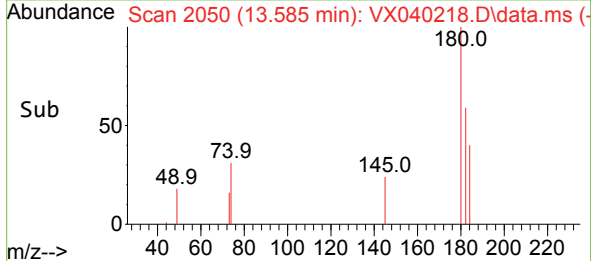


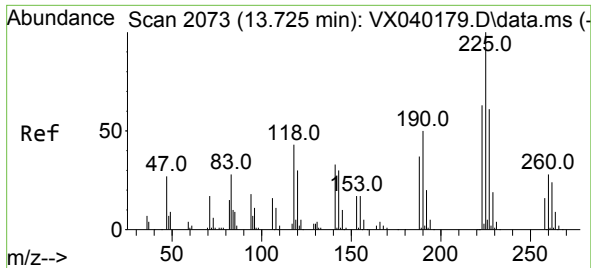
#93
 1,2,4-Trichlorobenzene
 Concen: 0.335 ug/l
 RT: 13.585 min Scan# 2050
 Delta R.T. -0.000 min
 Lab File: VX040218.D
 Acq: 14 Feb 2024 14:24



Tgt Ion: 180 Resp: 455

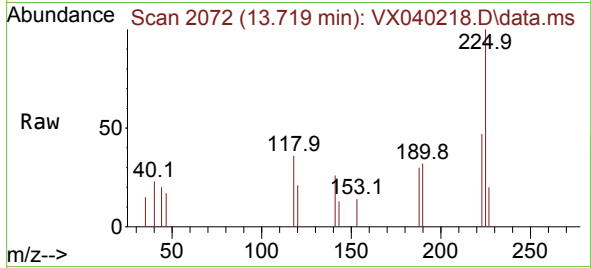
Ion	Ratio	Lower	Upper
180	100		
182	106.8	48.3	144.8
145	30.3	18.0	54.0





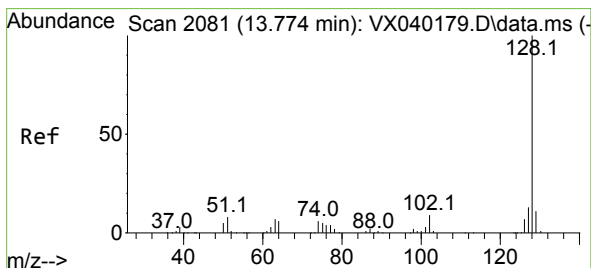
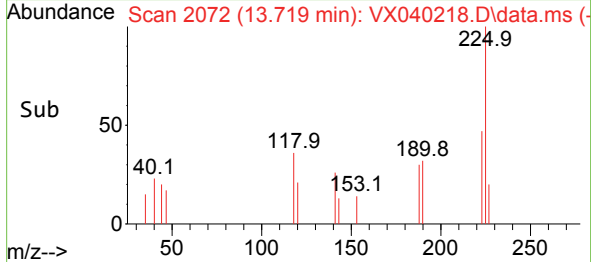
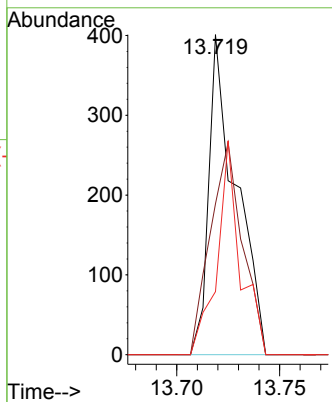
#94
 Hexachlorobutadiene
 Concen: 0.680 ug/l
 RT: 13.719 min Scan# 2072
 Delta R.T. -0.006 min
 Lab File: VX040218.D
 Acq: 14 Feb 2024 14:24

Instrument : MSVOA_X
 ClientSampleId : IBLK



Tgt Ion:225 Resp: 368

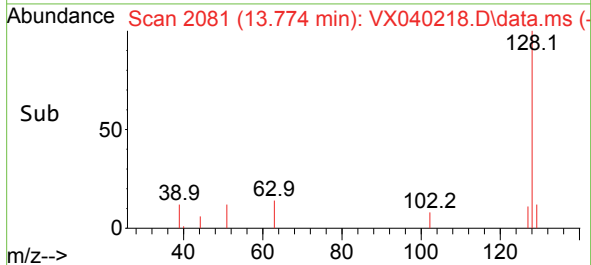
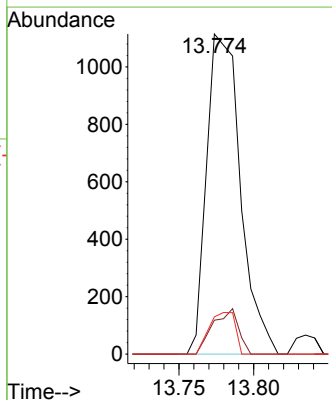
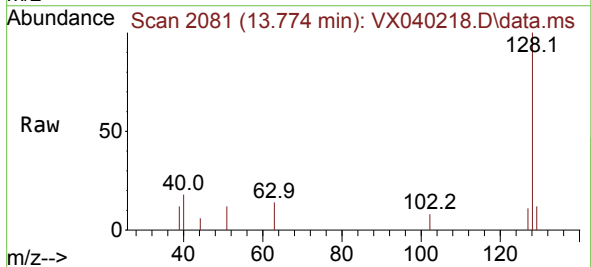
Ion	Ratio	Lower	Upper
225	100		
223	78.5	31.1	93.2
227	56.5	32.5	97.5

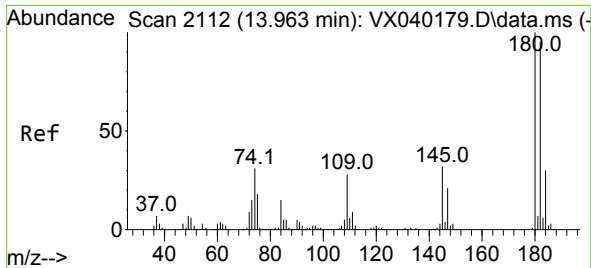


#95
 Naphthalene
 Concen: 0.410 ug/l
 RT: 13.774 min Scan# 2081
 Delta R.T. -0.000 min
 Lab File: VX040218.D
 Acq: 14 Feb 2024 14:24

Tgt Ion:128 Resp: 1756

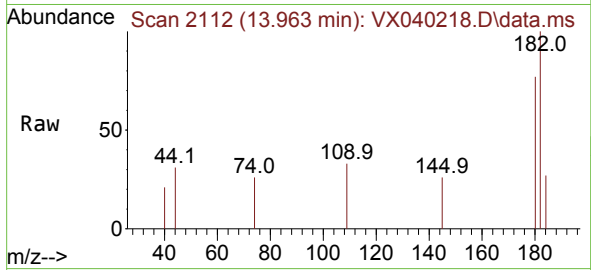
Ion	Ratio	Lower	Upper
128	100		
127	10.6	10.3	15.5
129	10.1	8.8	13.2





#96
 1,2,3-Trichlorobenzene
 Concen: 0.334 ug/l
 RT: 13.963 min Scan# 21
 Delta R.T. -0.000 min
 Lab File: VX040218.D
 Acq: 14 Feb 2024 14:24

Instrument :
 MSVOA_X
 ClientSampleId :
 IBLK



Tgt Ion:180 Resp: 432

Ion	Ratio	Lower	Upper
180	100		
182	118.5	46.9	140.6
145	36.8	17.8	53.5

