

Data Path : Z:\voasrv\HPCHEM1\MSVOA\_X\Data\VX021424\  
 Data File : VX040220.D  
 Acq On : 14 Feb 2024 15:09  
 Operator : JC/MD  
 Sample : P1465-01  
 Misc : 5.0mL/MSVOA\_X/WATER  
 ALS Vial : 9 Sample Multiplier: 1

Instrument :  
 MSVOA\_X  
 ClientSampleId :

Quant Time: Feb 15 00:03:28 2024  
 Quant Method : Z:\voasrv\HPCHEM1\MSVOA\_X\Method\82X020924W.M  
 Quant Title : SW846 8260  
 QLast Update : Mon Feb 12 00:21:14 2024  
 Response via : Initial Calibration

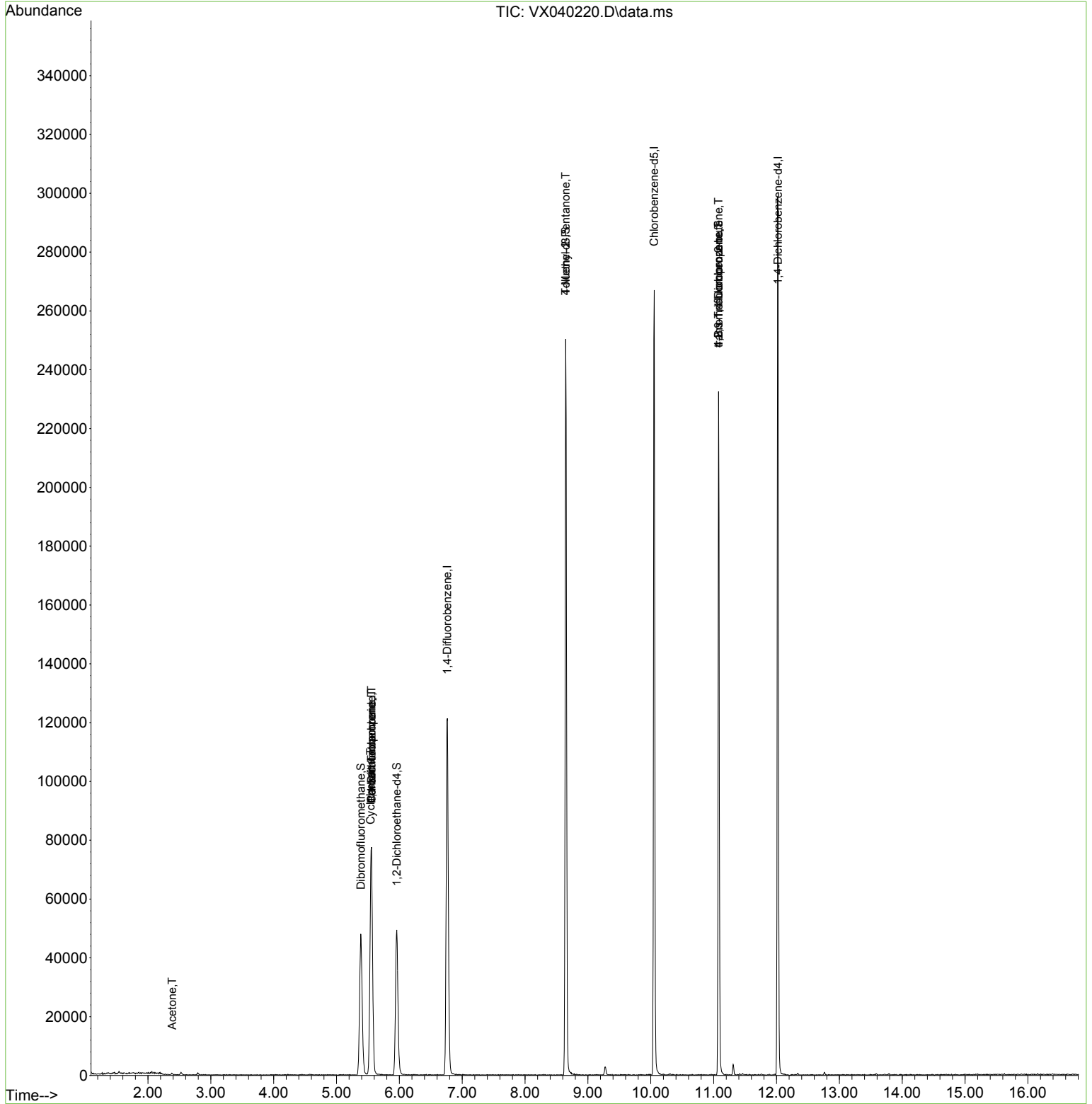
Compound	R.T.	QIon	Response	Conc	Units	Dev(Min)
-----						
Internal Standards						
1) Pentafluorobenzene	5.556	168	75305	50.000	ug/l	# 0.00
34) 1,4-Difluorobenzene	6.763	114	125445	50.000	ug/l	0.00
63) Chlorobenzene-d5	10.055	117	121281	50.000	ug/l	0.00
72) 1,4-Dichlorobenzene-d4	12.024	152	64510	50.000	ug/l	0.00
System Monitoring Compounds						
33) 1,2-Dichloroethane-d4	5.958	65	47628	42.513	ug/l	0.00
Spiked Amount	50.000	Range 78 - 117	Recovery	=	85.020%	
35) Dibromofluoromethane	5.385	113	40411	46.129	ug/l	0.00
Spiked Amount	50.000	Range 75 - 124	Recovery	=	92.260%	
50) Toluene-d8	8.646	98	150806	46.019	ug/l	0.00
Spiked Amount	50.000	Range 92 - 112	Recovery	=	92.040%	
62) 4-Bromofluorobenzene	11.079	95	60137	44.996	ug/l	0.00
Spiked Amount	50.000	Range 83 - 123	Recovery	=	90.000%	
Target Compounds						
						Qvalue
16) Acetone	2.385	43	528	1.148	ug/l	# 89
20) Methylene Chloride	2.782	84	360	Below Cal		# 39
31) Cyclohexane	5.543	56	1695	1.268	ug/l	# 18
36) 1,1-Dichloropropene	5.556	75	5480	4.466	ug/l	# 47
38) Carbon Tetrachloride	5.556	117	7637	6.545	ug/l	# 15
51) 4-Methyl-2-Pentanone	8.646	43	724	0.497	ug/l	# 1
76) 1,2,3-Trichloropropane	11.079	75	31028	23.752	ug/l	# 39
81) trans-1,4-Dichloro-2-b...	11.079	75	31028	65.512	ug/l	# 5
-----						

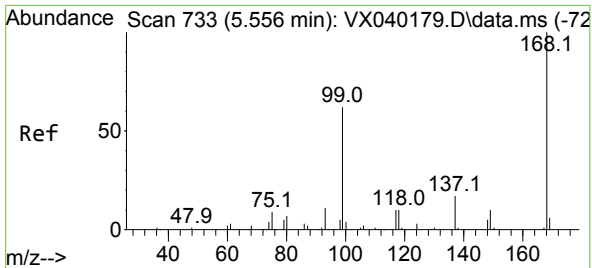
(#) = qualifier out of range (m) = manual integration (+) = signals summed

Data Path : Z:\voasrv\HPCHEM1\MSVOA\_X\Data\VX021424\  
 Data File : VX040220.D  
 Acq On : 14 Feb 2024 15:09  
 Operator : JC/MD  
 Sample : P1465-01  
 Misc : 5.0mL/MSVOA\_X/WATER  
 ALS Vial : 9 Sample Multiplier: 1

Instrument :  
 MSVOA\_X  
 ClientSampleId :

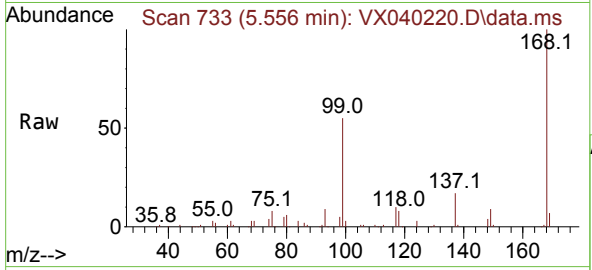
Quant Time: Feb 15 00:03:28 2024  
 Quant Method : Z:\voasrv\HPCHEM1\MSVOA\_X\Method\82X020924W.M  
 Quant Title : SW846 8260  
 QLast Update : Mon Feb 12 00:21:14 2024  
 Response via : Initial Calibration



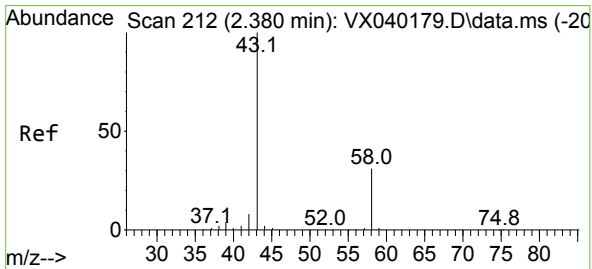
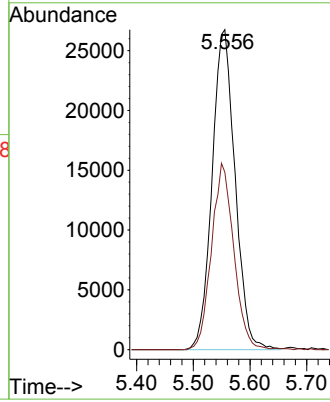
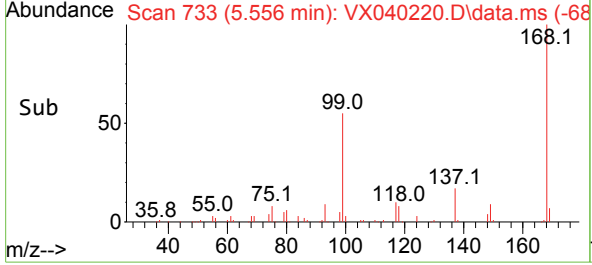


#1  
 Pentafluorobenzene  
 Concen: 50.000 ug/l  
 RT: 5.556 min Scan# 71  
 Delta R.T. 0.006 min  
 Lab File: VX040220.D  
 Acq: 14 Feb 2024 15:09

Instrument :  
 MSVOA\_X  
 ClientSampleId :

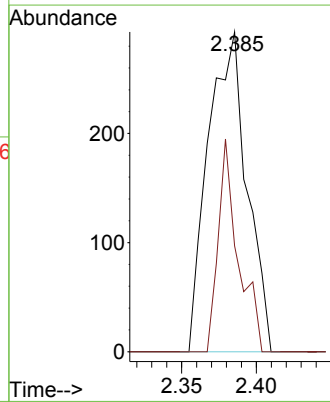
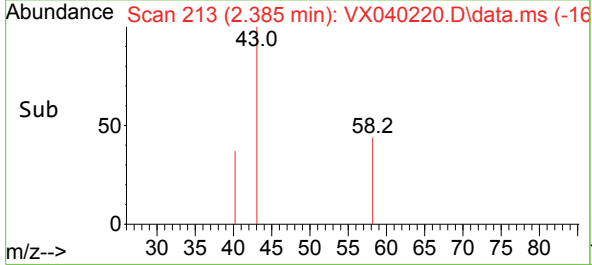
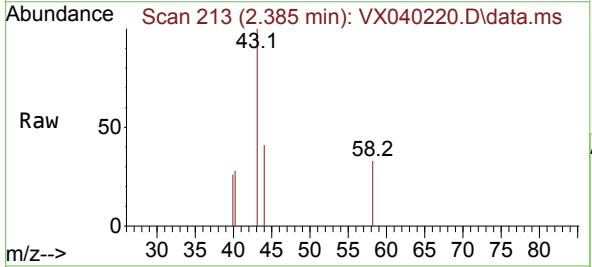


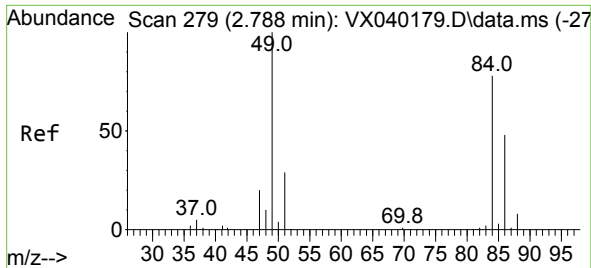
Tgt Ion:168 Resp: 75305  
 Ion Ratio Lower Upper  
 168 100  
 99 55.4 56.6 85.0#



#16  
 Acetone  
 Concen: 1.148 ug/l  
 RT: 2.385 min Scan# 213  
 Delta R.T. 0.006 min  
 Lab File: VX040220.D  
 Acq: 14 Feb 2024 15:09

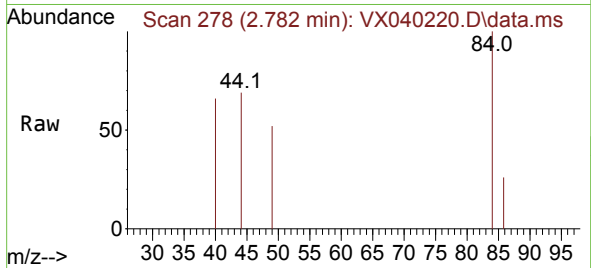
Tgt Ion: 43 Resp: 528  
 Ion Ratio Lower Upper  
 43 100  
 58 33.1 21.9 32.9#





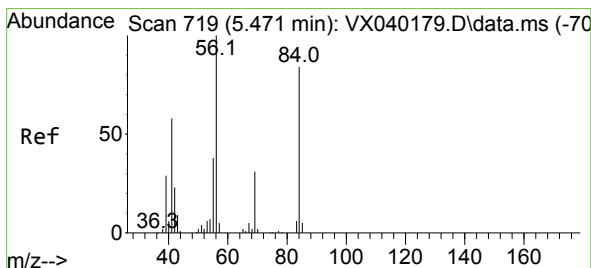
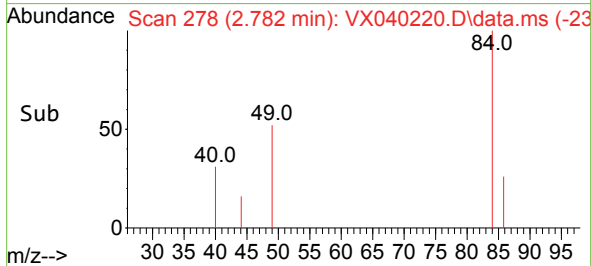
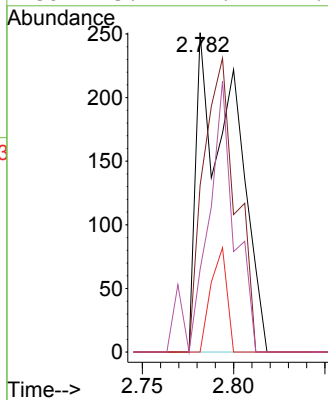
#20  
 Methylene Chloride  
 Concen: Below Cal  
 RT: 2.782 min Scan# 21  
 Delta R.T. -0.006 min  
 Lab File: VX040220.D  
 Acq: 14 Feb 2024 15:09

Instrument :  
 MSVOA\_X  
 ClientSampleId :



Tgt Ion: 84 Resp: 360

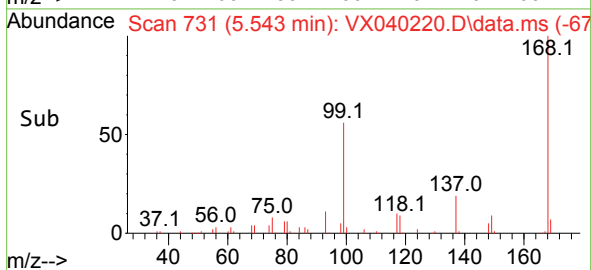
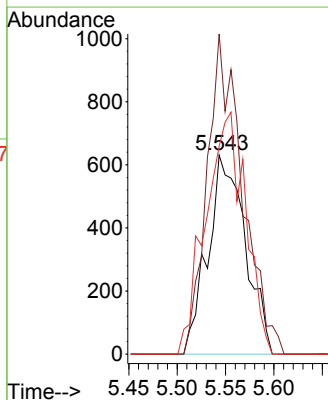
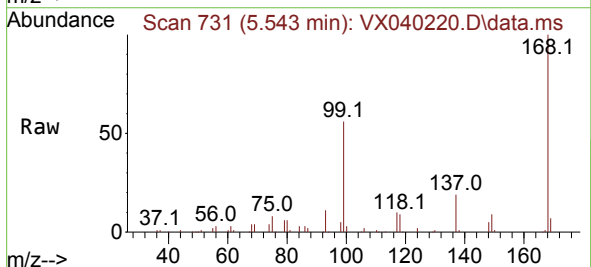
Ion	Ratio	Lower	Upper
84	100		
49	52.2	103.6	155.4#
51	0.0	33.8	50.6#
86	25.9	49.4	74.0#

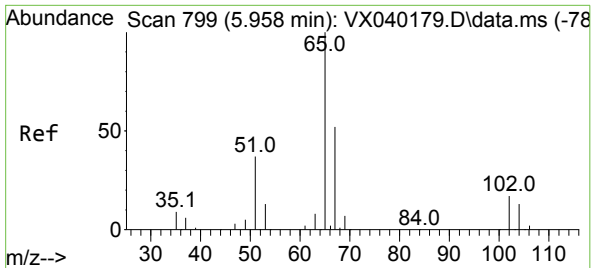


#31  
 Cyclohexane  
 Concen: 1.268 ug/l  
 RT: 5.543 min Scan# 731  
 Delta R.T. 0.073 min  
 Lab File: VX040220.D  
 Acq: 14 Feb 2024 15:09

Tgt Ion: 56 Resp: 1695

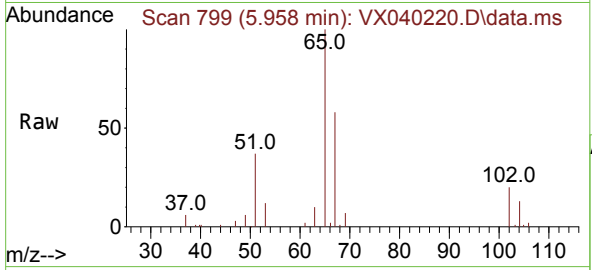
Ion	Ratio	Lower	Upper
56	100		
69	160.9	23.4	35.2#
84	104.4	65.9	98.9#



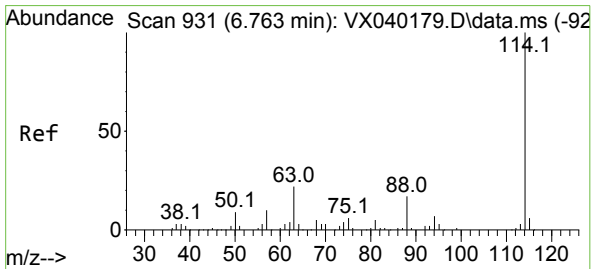
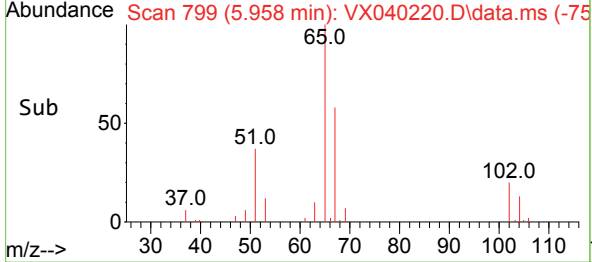
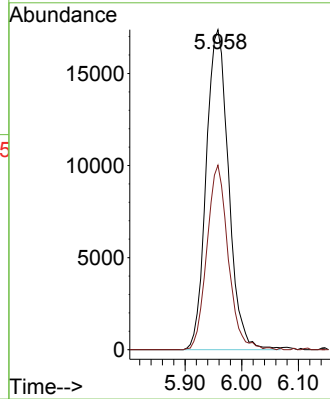


#33  
 1,2-Dichloroethane-d4  
 Concen: 42.513 ug/l  
 RT: 5.958 min Scan# 799  
 Delta R.T. -0.000 min  
 Lab File: VX040220.D  
 Acq: 14 Feb 2024 15:09

Instrument : MSVOA\_X  
 ClientSampleId :

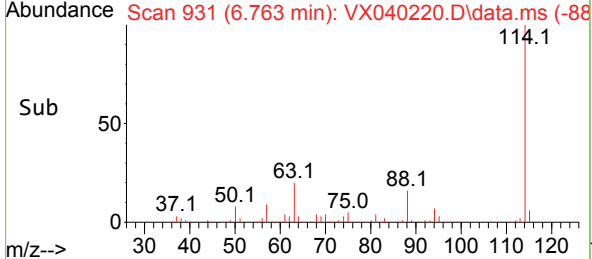
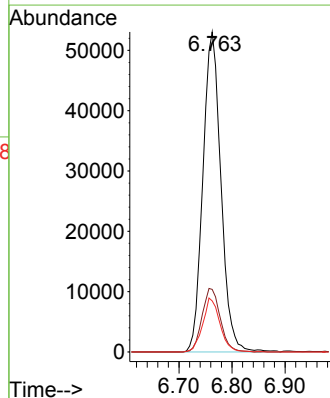
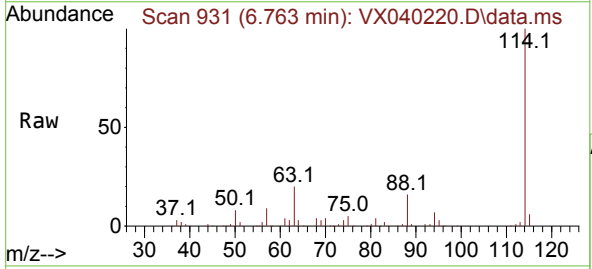


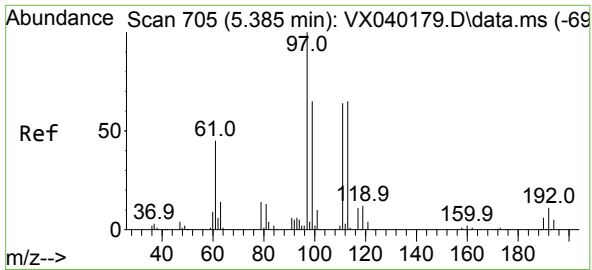
Tgt Ion: 65 Resp: 47628  
 Ion Ratio Lower Upper  
 65 100  
 67 54.9 0.0 100.2



#34  
 1,4-Difluorobenzene  
 Concen: 50.000 ug/l  
 RT: 6.763 min Scan# 931  
 Delta R.T. -0.000 min  
 Lab File: VX040220.D  
 Acq: 14 Feb 2024 15:09

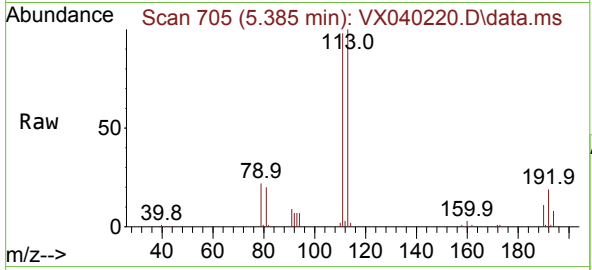
Tgt Ion: 114 Resp: 125445  
 Ion Ratio Lower Upper  
 114 100  
 63 19.6 0.0 45.0  
 88 15.9 0.0 36.6



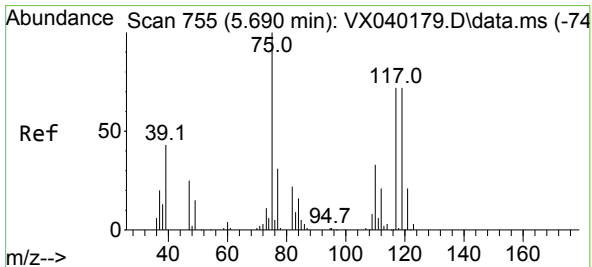
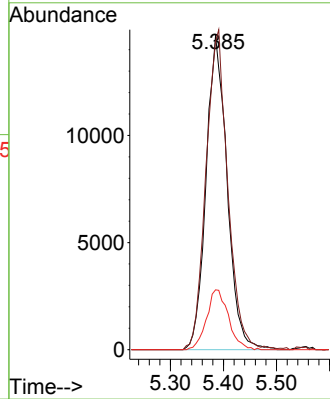
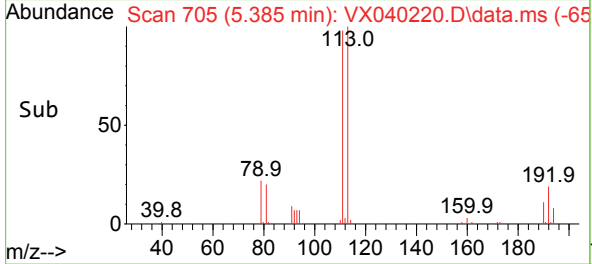


#35  
 Dibromofluoromethane  
 Concen: 46.129 ug/l  
 RT: 5.385 min Scan# 705  
 Delta R.T. -0.000 min  
 Lab File: VX040220.D  
 Acq: 14 Feb 2024 15:09

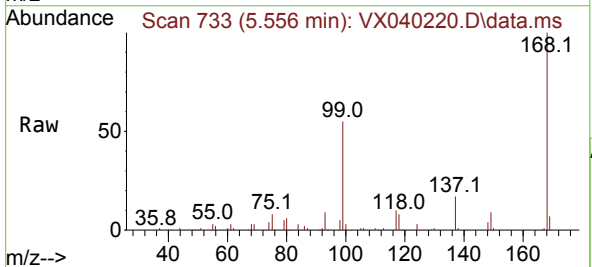
Instrument : MSVOA\_X  
 ClientSampleId :



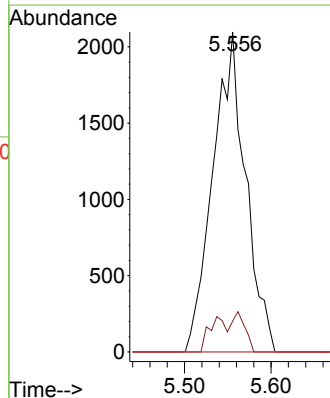
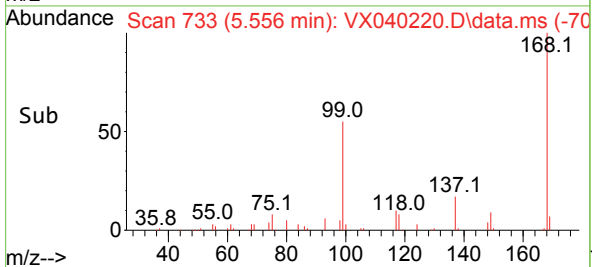
Tgt Ion:113 Resp: 40411  
 Ion Ratio Lower Upper  
 113 100  
 111 105.2 82.9 124.3  
 192 19.8 13.3 19.9

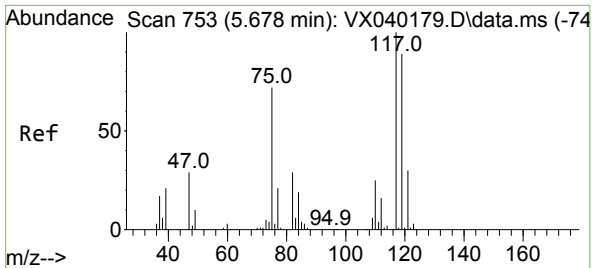


#36  
 1,1-Dichloropropene  
 Concen: 4.466 ug/l  
 RT: 5.556 min Scan# 733  
 Delta R.T. -0.140 min  
 Lab File: VX040220.D  
 Acq: 14 Feb 2024 15:09



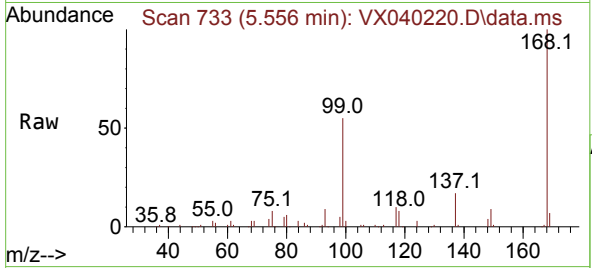
Tgt Ion: 75 Resp: 5480  
 Ion Ratio Lower Upper  
 75 100  
 110 5.1 17.0 50.9#  
 77 0.0 24.7 37.1#



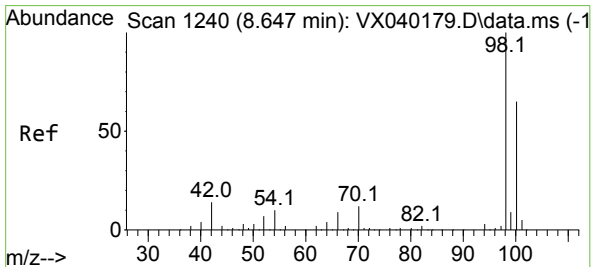
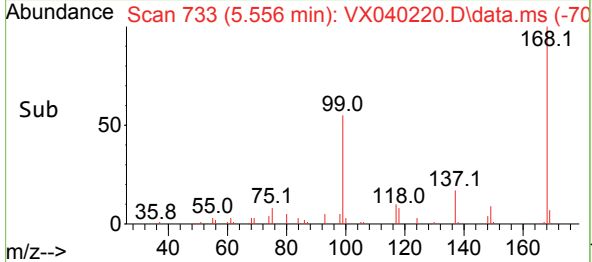
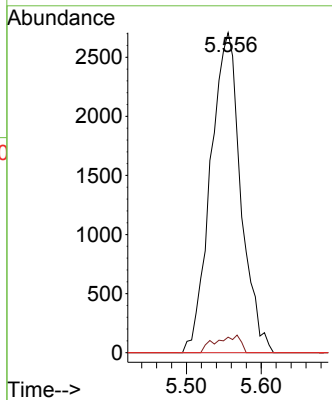


#38  
 Carbon Tetrachloride  
 Concen: 6.545 ug/l  
 RT: 5.556 min Scan# 71  
 Delta R.T. -0.116 min  
 Lab File: VX040220.D  
 Acq: 14 Feb 2024 15:09

Instrument :  
 MSVOA\_X  
 ClientSampleId :

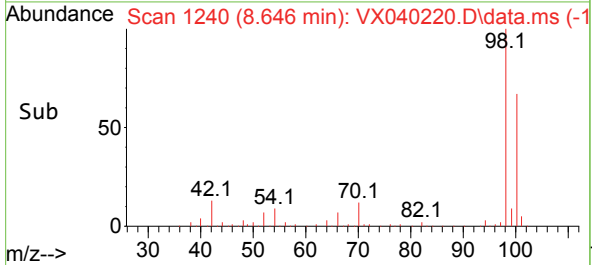
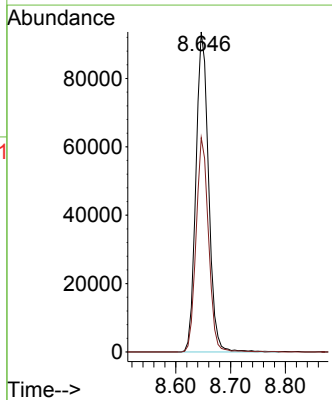
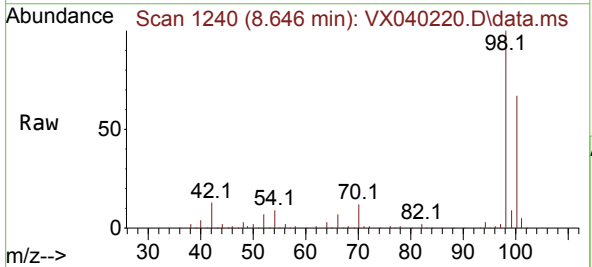


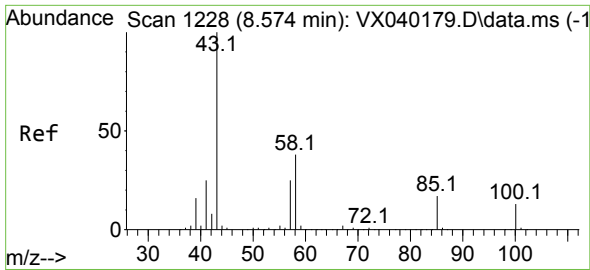
Tgt Ion:117 Resp: 7637  
 Ion Ratio Lower Upper  
 117 100  
 119 4.9 78.2 117.2#  
 121 0.0 24.4 36.6#



#50  
 Toluene-d8  
 Concen: 46.019 ug/l  
 RT: 8.646 min Scan# 1240  
 Delta R.T. -0.006 min  
 Lab File: VX040220.D  
 Acq: 14 Feb 2024 15:09

Tgt Ion: 98 Resp: 150806  
 Ion Ratio Lower Upper  
 98 100  
 100 65.8 53.1 79.7

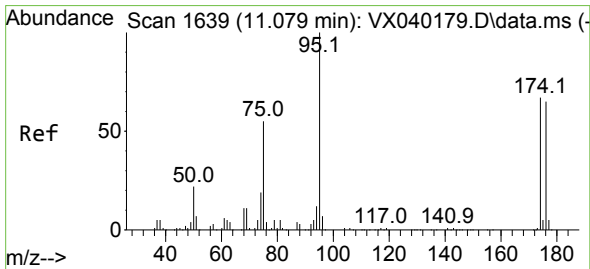
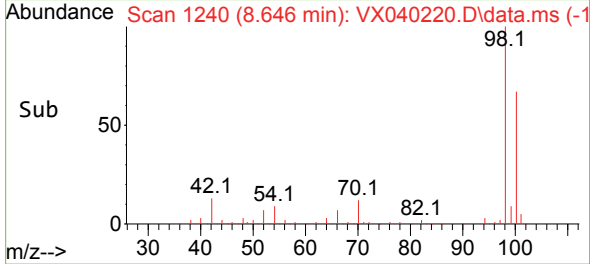
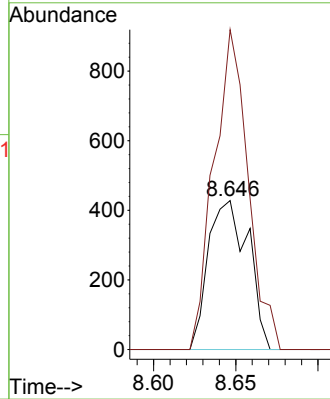
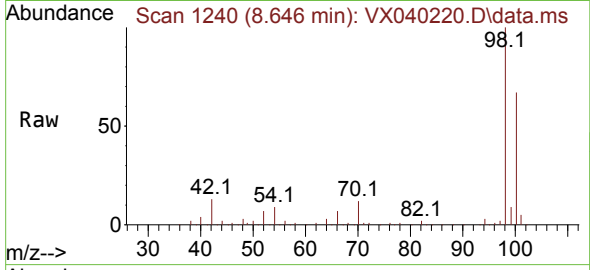




#51  
 4-Methyl-2-Pentanone  
 Concen: 0.497 ug/l  
 RT: 8.646 min Scan# 11  
 Delta R.T. 0.072 min  
 Lab File: VX040220.D  
 Acq: 14 Feb 2024 15:09

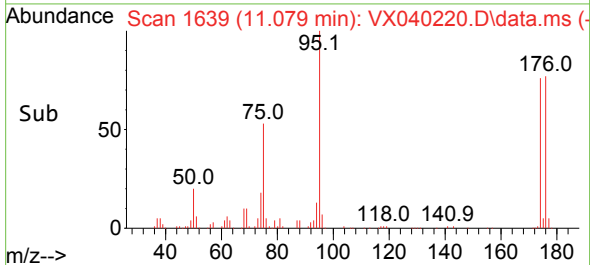
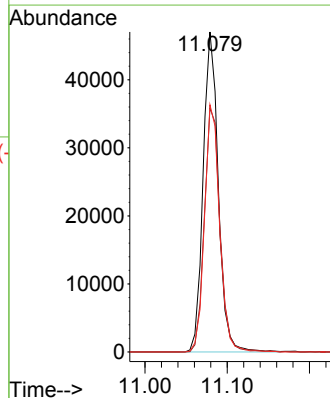
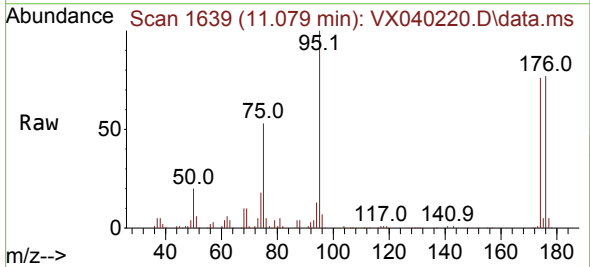
Instrument :  
 MSVOA\_X  
 ClientSampleId :

Tgt Ion: 43 Resp: 724  
 Ion Ratio Lower Upper  
 43 100  
 58 183.4 30.4 45.6#

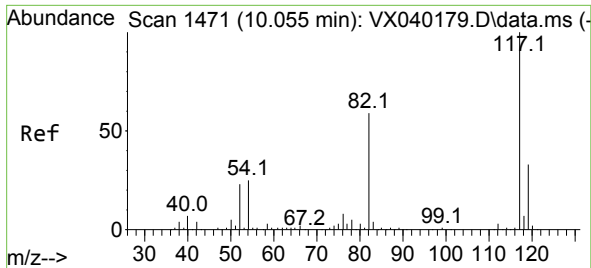


#62  
 4-Bromofluorobenzene  
 Concen: 44.996 ug/l  
 RT: 11.079 min Scan# 1639  
 Delta R.T. -0.000 min  
 Lab File: VX040220.D  
 Acq: 14 Feb 2024 15:09

Tgt Ion: 95 Resp: 60137  
 Ion Ratio Lower Upper  
 95 100  
 174 78.9 0.0 135.6  
 176 77.2 0.0 131.0

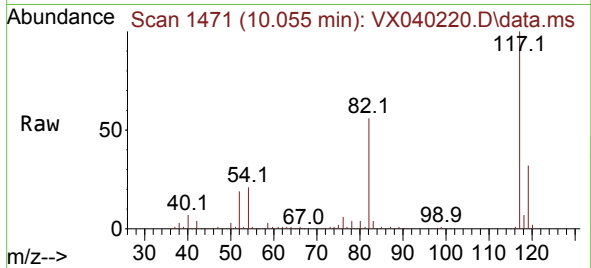




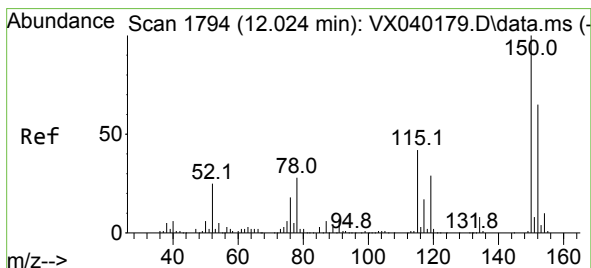
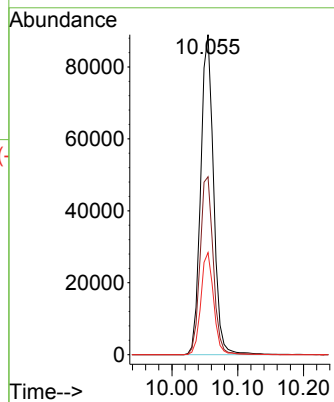
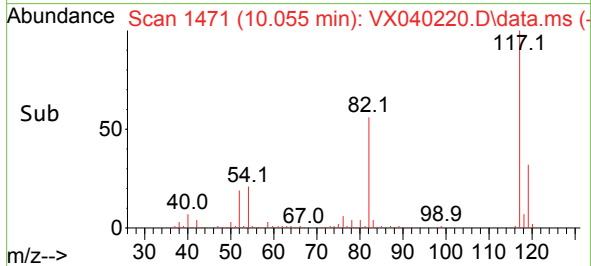


#63  
 Chlorobenzene-d5  
 Concen: 50.000 ug/l  
 RT: 10.055 min Scan# 14  
 Delta R.T. -0.000 min  
 Lab File: VX040220.D  
 Acq: 14 Feb 2024 15:09

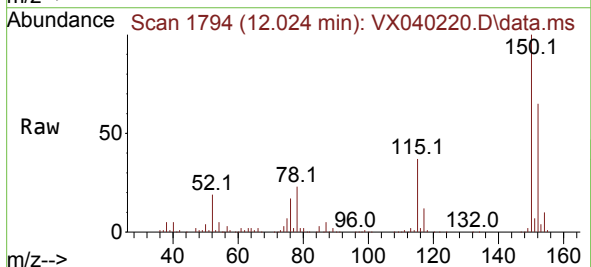
Instrument :  
 MSVOA\_X  
 ClientSampleId :



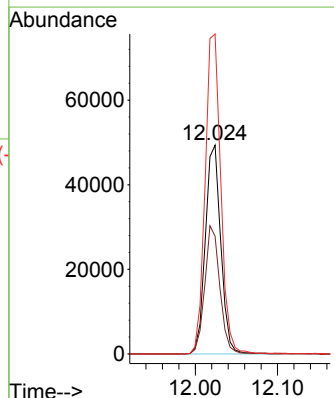
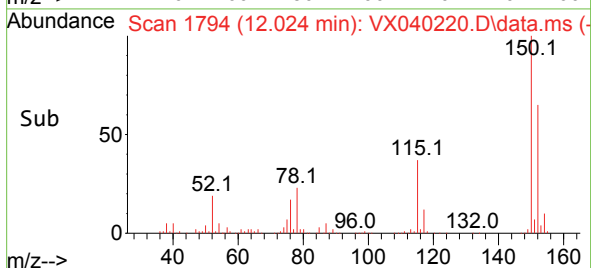
Tgt Ion:117 Resp: 121281  
 Ion Ratio Lower Upper  
 117 100  
 82 55.6 46.2 69.4  
 119 31.9 25.5 38.3

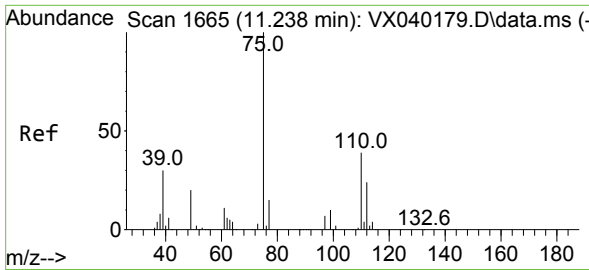


#72  
 1,4-Dichlorobenzene-d4  
 Concen: 50.000 ug/l  
 RT: 12.024 min Scan# 1794  
 Delta R.T. -0.000 min  
 Lab File: VX040220.D  
 Acq: 14 Feb 2024 15:09



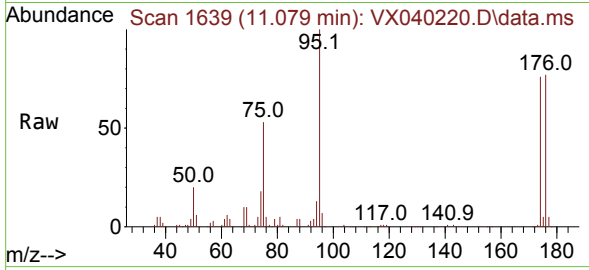
Tgt Ion:152 Resp: 64510  
 Ion Ratio Lower Upper  
 152 100  
 115 60.0 43.3 129.9  
 150 155.1 0.0 345.0



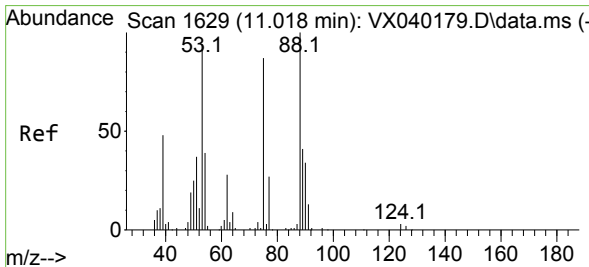
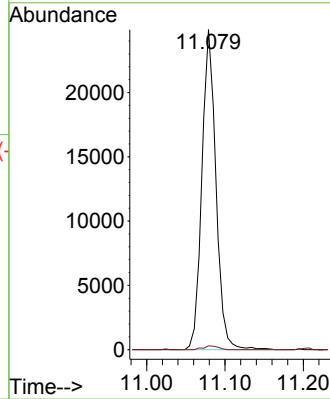
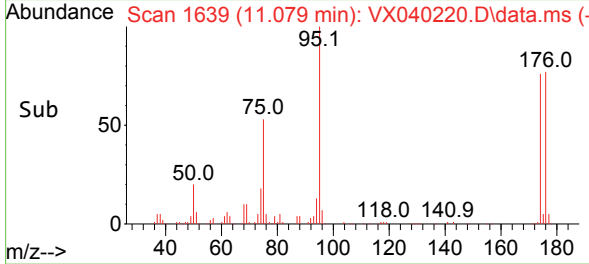


#76  
 1,2,3-Trichloropropane  
 Concen: 23.752 ug/l  
 RT: 11.079 min Scan# 1639  
 Delta R.T. -0.159 min  
 Lab File: VX040220.D  
 Acq: 14 Feb 2024 15:09

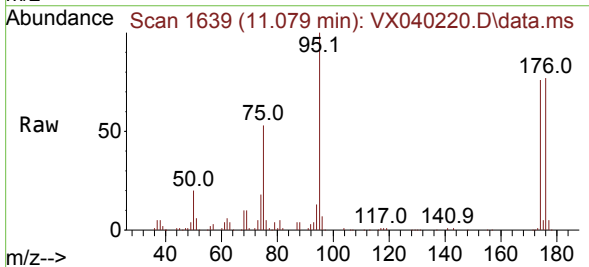
Instrument : MSVOA\_X  
 ClientSampleId :



Tgt Ion: 75 Resp: 31028  
 Ion Ratio Lower Upper  
 75 100  
 77 1.2 19.1 57.5#



#81  
 trans-1,4-Dichloro-2-butene  
 Concen: 65.512 ug/l  
 RT: 11.079 min Scan# 1639  
 Delta R.T. 0.061 min  
 Lab File: VX040220.D  
 Acq: 14 Feb 2024 15:09



Tgt Ion: 75 Resp: 31028  
 Ion Ratio Lower Upper  
 75 100  
 53 0.0 90.5 135.7#  
 89 0.0 36.9 55.3#

