

Data Path : Z:\VOASRV\HPCHEM1\MSVOA_X\DATA\VX021619\
 Data File : VX007563.D
 Acq On : 15 Feb 2019 13:05
 Operator : JC/SP
 Sample : VX0216WBL02
 Misc : 5.0mL/MSVOA_X/WATER
 ALS Vial : 5 Sample Multiplier: 1

Instrument :
 MSVOA_X
 ClientSampleId :
 VX0216WBL02

Quant Time: Feb 15 13:31:06 2019
 Quant Method : Z:\VOASRV\HPCHEM1\MSVOA_X\METHOD\624X021319W.M
 Quant Title : METHOD 624 VOLATILE ORGANIC ANALYSIS
 QLast Update : Wed Feb 13 07:51:18 2019
 Response via : Initial Calibration

Internal Standards	R.T.	QIon	Response	Conc	Units	Dev(Min)
1) Bromochloromethane	5.03	128	78296	30.00	ug/l	0.00
28) 1,4-Difluorobenzene	6.86	114	406989	30.00	ug/l	0.00
57) Chlorobenzene-d5	10.11	117	351357	30.00	ug/l	0.00

System Monitoring Compounds

27) 1,2-Dichloroethane-d4	6.07	65	150012	29.62	ug/l	0.00
Spiked Amount	30.000	Range	50 - 169	Recovery	=	98.73%
60) 4-Bromofluorobenzene	11.13	95	146857	27.23	ug/l	0.00
Spiked Amount	30.000	Range	56 - 143	Recovery	=	90.77%
63) Toluene-d8	8.71	98	467796	29.46	ug/l	0.00
Spiked Amount	30.000	Range	66 - 137	Recovery	=	98.20%

Target Compounds

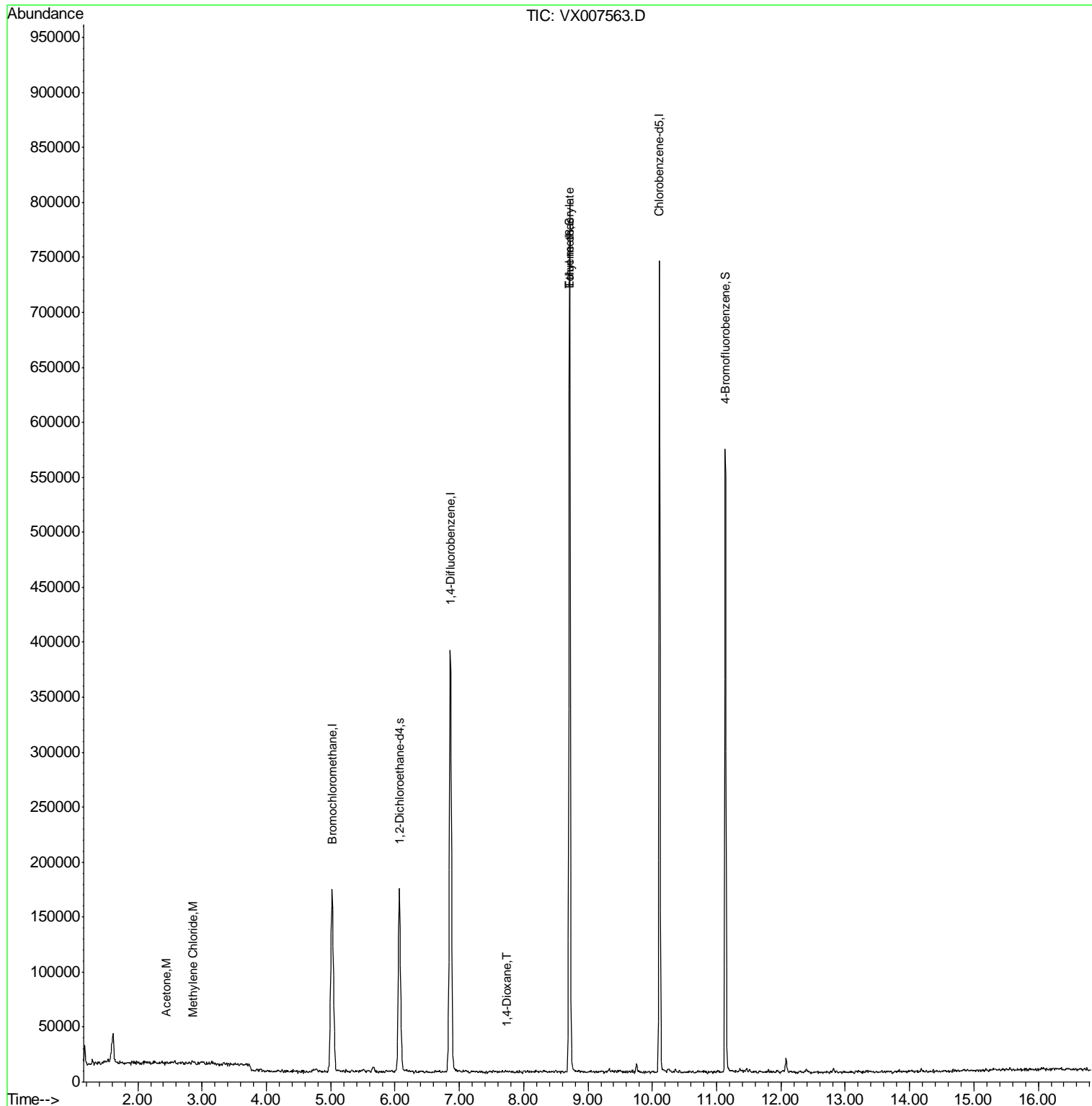
					Qvalue	
15) Acetone	2.45	58	161	0.217	ug/l #	52
18) Methylene Chloride	2.86	84	1329	0.275	ug/l #	83
45) 1,4-Dioxane	7.74	88	101	0.862	ug/l #	1
51) Ethyl methacrylate	8.72	69	1767	0.260	ug/l	75

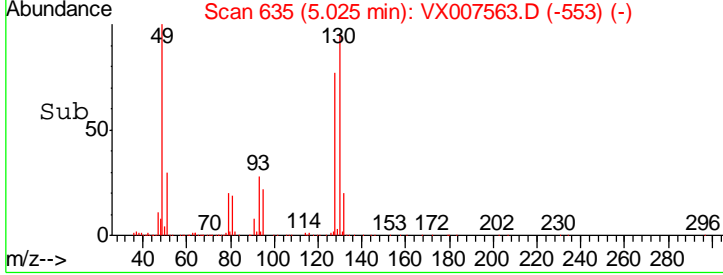
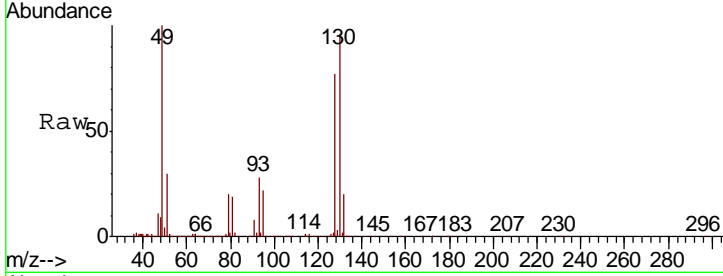
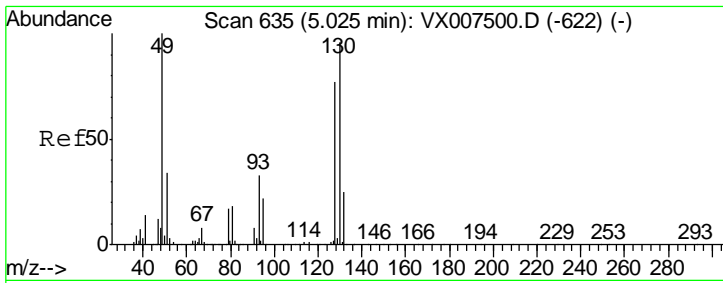
(#) = qualifier out of range (m) = manual integration (+) = signals summed

Data Path : Z:\VOASRV\HPCHEM1\MSVOA_X\DATA\VX021619\
 Data File : VX007563.D
 Acq On : 15 Feb 2019 13:05
 Operator : JC/SP
 Sample : VX0216WBL02
 Misc : 5.0mL/MSVOA_X/WATER
 ALS Vial : 5 Sample Multiplier: 1

Instrument :
 MSVOA_X
 ClientSampleId :
 VX0216WBL02

Quant Time: Feb 15 13:31:06 2019
 Quant Method : Z:\VOASRV\HPCHEM1\MSVOA_X\METHOD\624X021319W.M
 Quant Title : METHOD 624 VOLATILE ORGANIC ANALYSIS
 QLast Update : Wed Feb 13 07:51:18 2019
 Response via : Initial Calibration

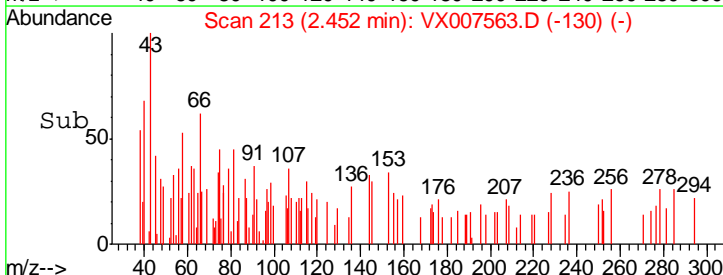
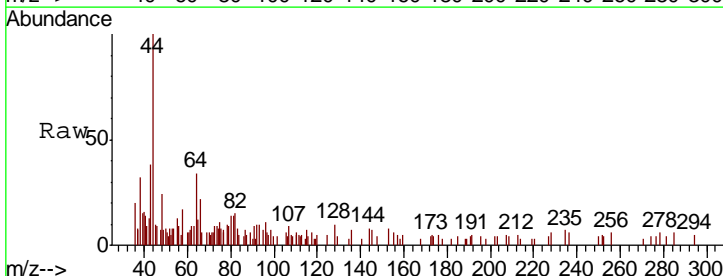
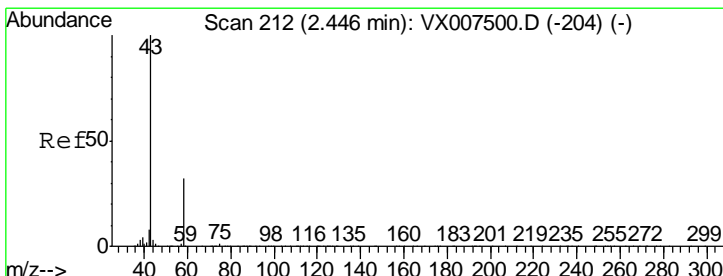
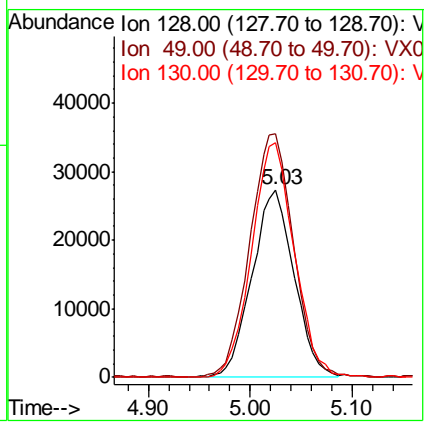




#1
 Bromochloromethane
 Concen: 30.000 ug/l
 RT: 5.03 min Scan# 635
 Delta R.T. -0.00 min
 Lab File: VX007563.D
 Acq: 15 Feb 2019 13:05

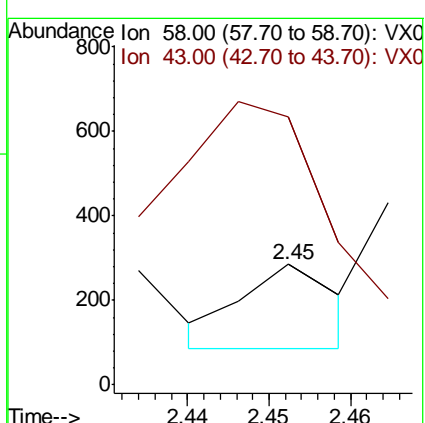
Instrument :
 MSVOA_X
 ClientSampleId :
 VX0216WBL02

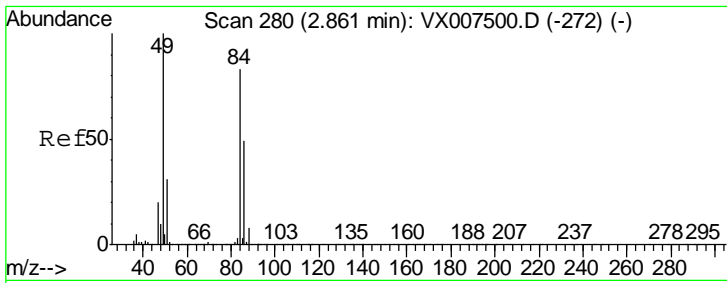
Tgt Ion	Resp	Lower	Upper
128	78296		
49	134.5	0.0	350.8
130	127.0	0.0	325.8



#15
 Acetone
 Concen: 0.217 ug/l
 RT: 2.45 min Scan# 213
 Delta R.T. 0.01 min
 Lab File: VX007563.D
 Acq: 15 Feb 2019 13:05

Tgt Ion	Resp	Lower	Upper
58	161		
43	214.6	249.8	374.6#

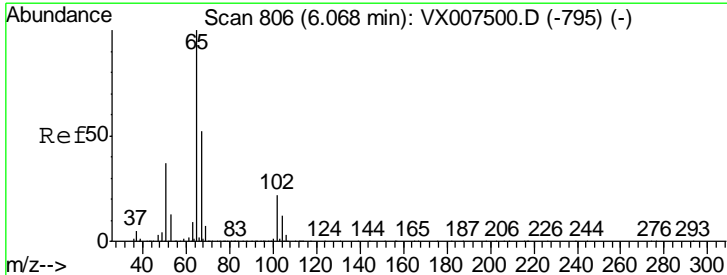
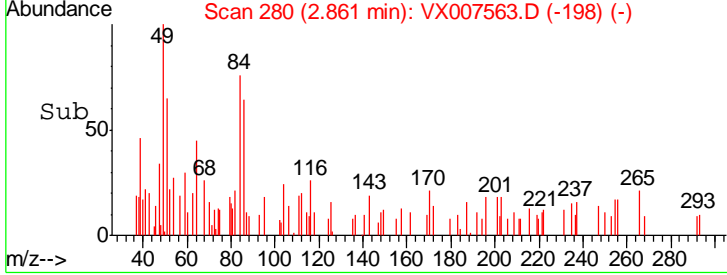
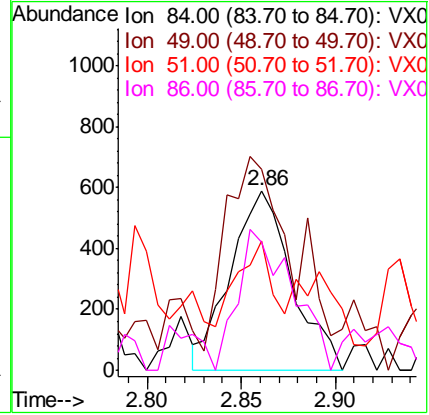
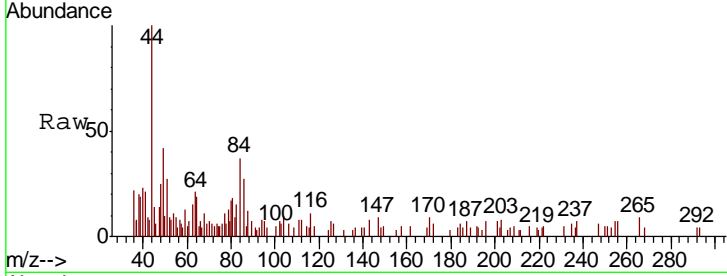




#18
 Methylene Chloride
 Concen: 0.275 ug/l
 RT: 2.86 min Scan# 280
 Delta R.T. -0.00 min
 Lab File: VX007563.D
 Acq: 15 Feb 2019 13:05

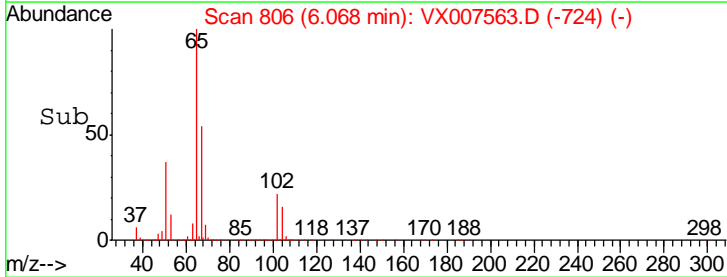
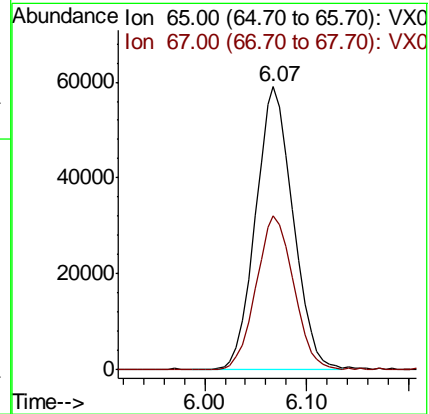
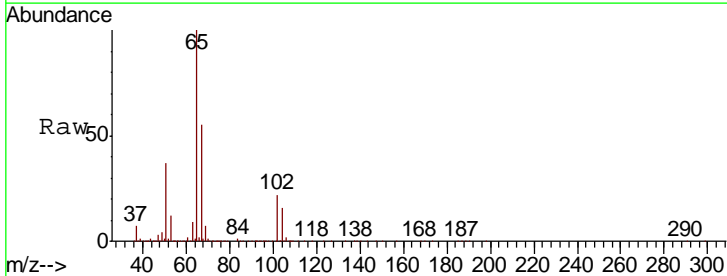
Instrument : MSVOA_X
 ClientSampled : VX0216WBL02

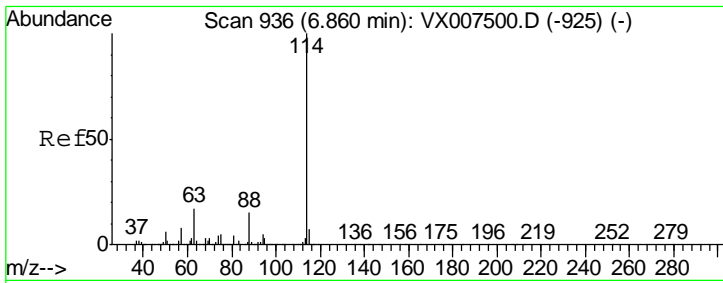
Tgt Ion	Resp	Lower	Upper
84	1329		
49	89.7	96.1	144.1#
51	38.1	29.1	43.7
86	55.8	47.3	70.9



#27
 1,2-Dichloroethane-d4
 Concen: 29.619 ug/l
 RT: 6.07 min Scan# 806
 Delta R.T. -0.00 min
 Lab File: VX007563.D
 Acq: 15 Feb 2019 13:05

Tgt Ion	Resp	Lower	Upper
65	150012		
67	54.8	42.9	64.3

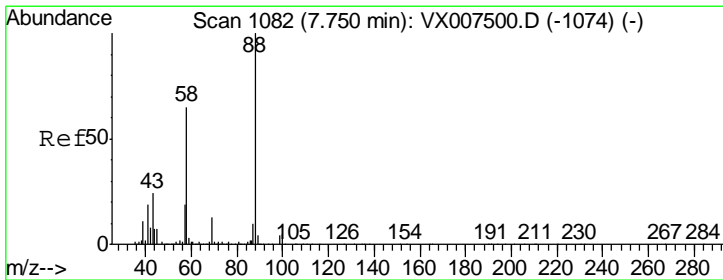
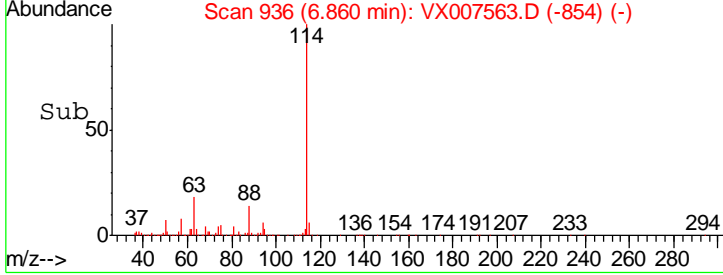
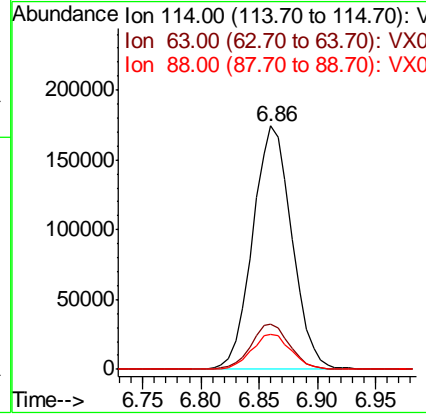
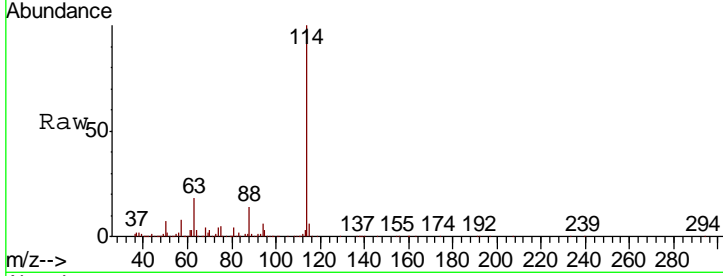




#28
 1,4-Difluorobenzene
 Concen: 30.000 ug/l
 RT: 6.86 min Scan# 936
 Delta R.T. -0.00 min
 Lab File: VX007563.D
 Acq: 15 Feb 2019 13:05

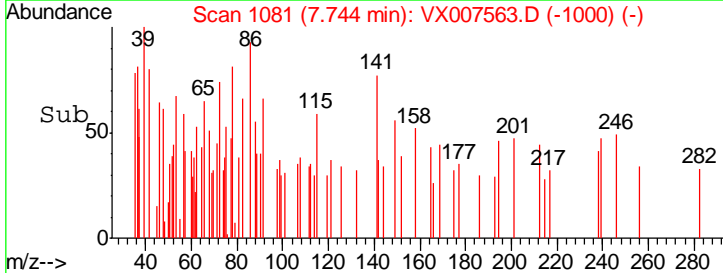
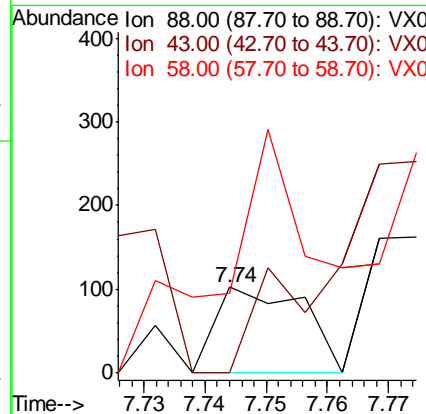
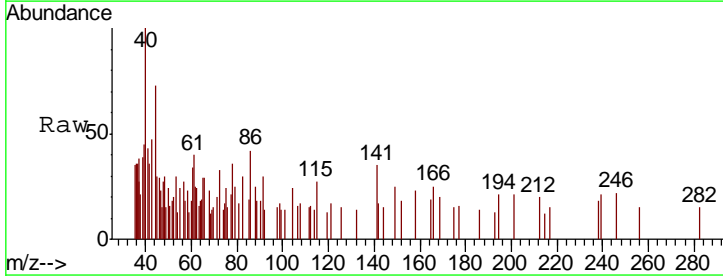
Instrument :
 MSVOA_X
 ClientSampled :
 VX0216WBL02

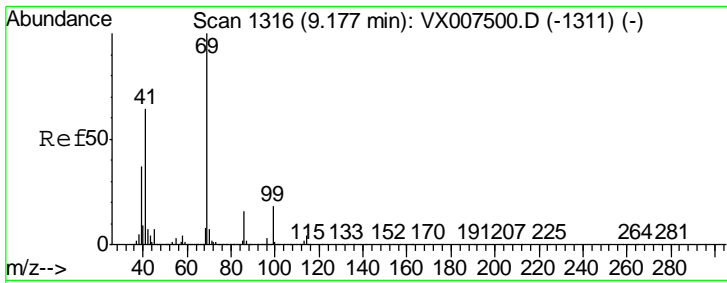
Tgt Ion	Resp	Lower	Upper
114	406989		
63	18.4	14.2	21.4
88	14.7	11.9	17.9



#45
 1,4-Dioxane
 Concen: 0.862 ug/l
 RT: 7.74 min Scan# 1081
 Delta R.T. -0.01 min
 Lab File: VX007563.D
 Acq: 15 Feb 2019 13:05

Tgt Ion	Resp	Lower	Upper
88	101		
43	71.3	23.6	35.4#
58	195.0	51.6	77.4#

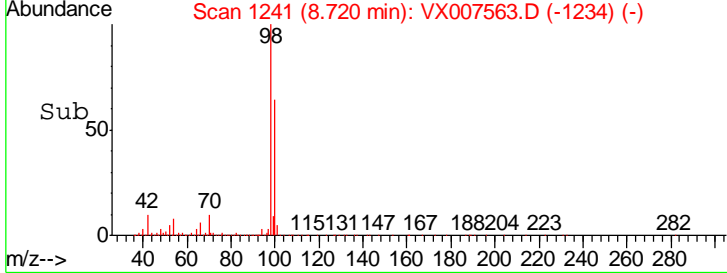
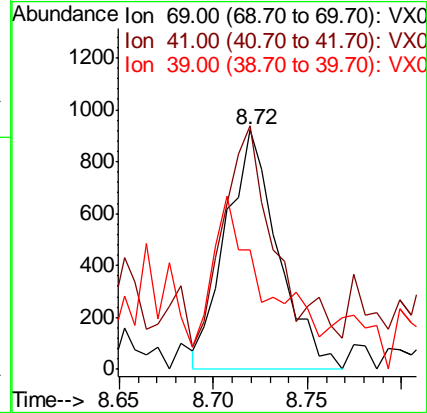
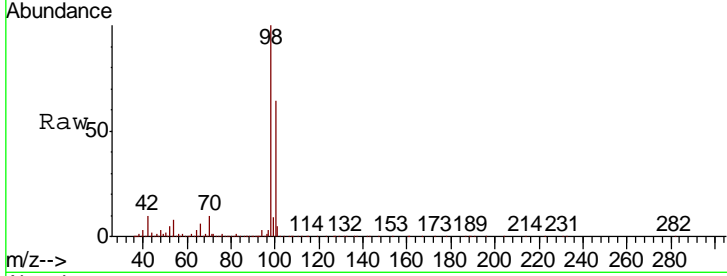




#51
 Ethyl methacrylate
 Concen: 0.260 ug/l
 RT: 8.72 min Scan# 1241
 Delta R.T. -0.46 min
 Lab File: VX007563.D
 Acq: 15 Feb 2019 13:05

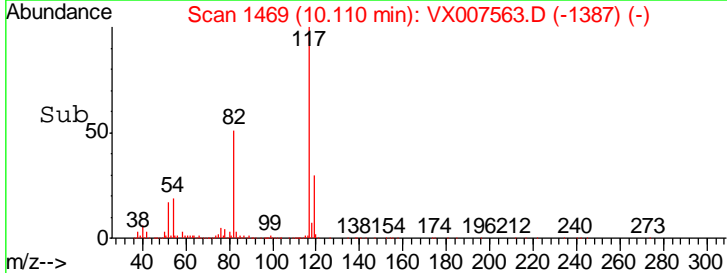
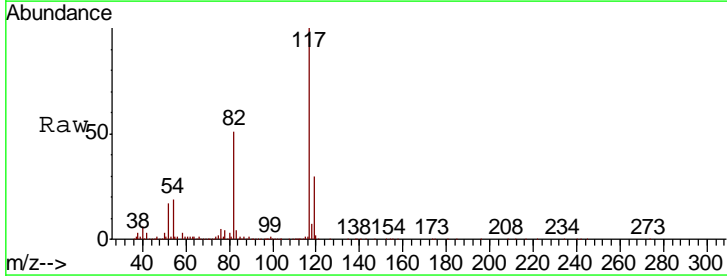
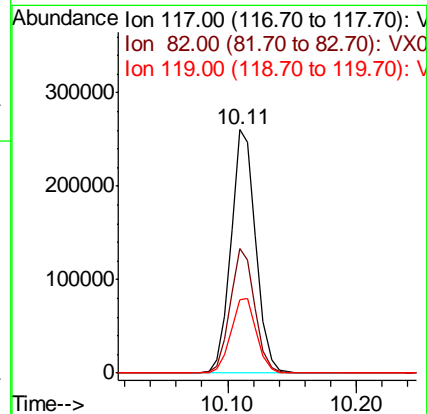
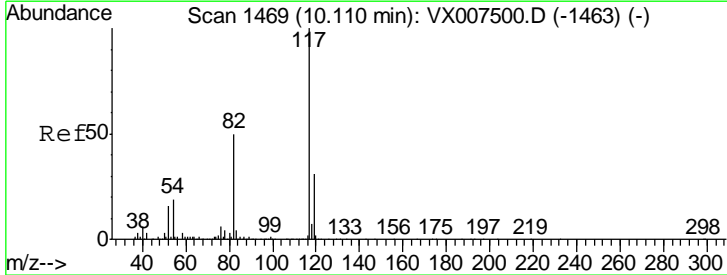
Instrument :
 MSVOA_X
 ClientSampled :
 VX0216WBL02

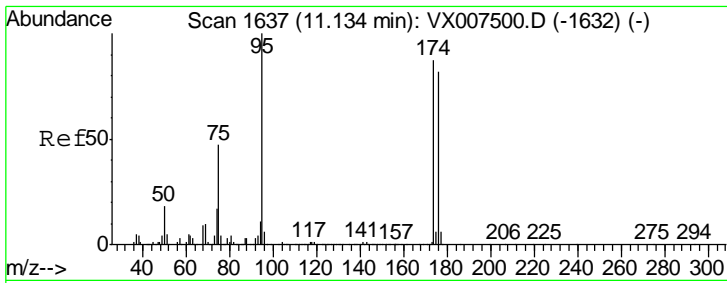
Tgt Ion	Resp	Lower	Upper
69	1767		
41	92.4	32.1	96.5
39	40.6	18.8	56.3



#57
 Chlorobenzene-d5
 Concen: 30.000 ug/l
 RT: 10.11 min Scan# 1469
 Delta R.T. -0.00 min
 Lab File: VX007563.D
 Acq: 15 Feb 2019 13:05

Tgt Ion	Resp	Lower	Upper
117	351357		
82	51.1	40.4	60.6
119	31.7	25.8	38.6

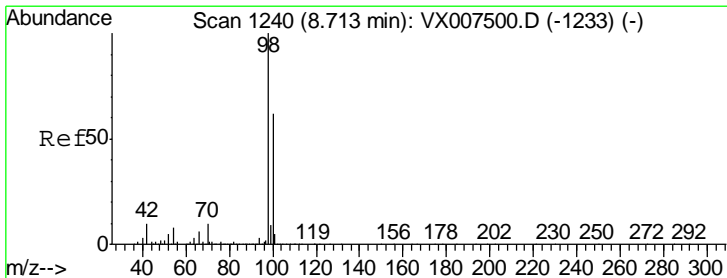
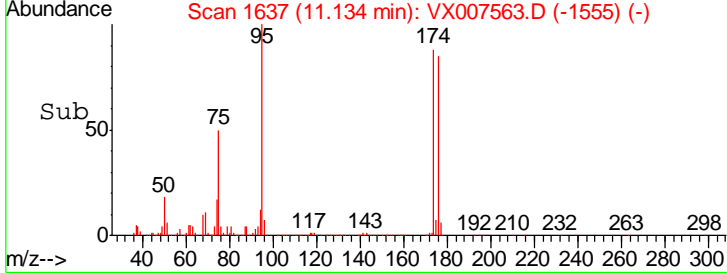
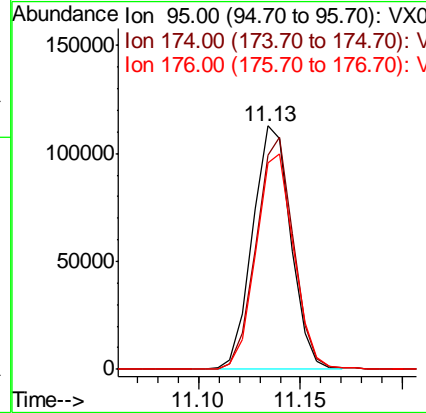
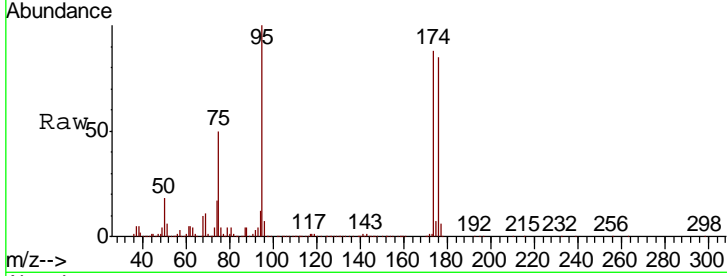




#60
 4-Bromofluorobenzene
 Concen: 27.233 ug/l
 RT: 11.13 min Scan# 1637
 Delta R.T. -0.00 min
 Lab File: VX007563.D
 Acq: 15 Feb 2019 13:05

Instrument :
 MSVOA_X
 Client Sampled :
 VX0216WBL02

Tgt Ion	Resp	Lower	Upper
95	146857		
174	93.3	74.9	112.3
176	87.7	70.7	106.1



#63
 Toluene-d8
 Concen: 29.457 ug/l
 RT: 8.71 min Scan# 1240
 Delta R.T. -0.00 min
 Lab File: VX007563.D
 Acq: 15 Feb 2019 13:05

Tgt Ion	Resp	Lower	Upper
98	467796		
100	64.2	50.9	76.3

