

Data Path : Z:\voasrv\HPCHEM1\MSVOA_X\Data\VX021622\
 Data File : VX027041.D
 Acq On : 15 Feb 2022 20:02
 Operator : JC/MD
 Sample : N1541-05
 Misc : 5.0mL/MSVOA_X/WATER
 ALS Vial : 11 Sample Multiplier: 1

Instrument :
 MSVOA_X
 ClientSampleId :
 MW-11

Quant Time: Feb 16 04:09:24 2022
 Quant Method : Z:\voasrv\HPCHEM1\MSVOA_X\Method\82X020822W.M
 Quant Title : SW846 8260
 QLast Update : Tue Feb 08 07:07:46 2022
 Response via : Initial Calibration

Compound	R.T.	QIon	Response	Conc	Units	Dev(Min)
Internal Standards						
1) Pentafluorobenzene	5.556	168	114176	50.000	ug/l	0.00
34) 1,4-Difluorobenzene	6.763	114	190408	50.000	ug/l	0.00
63) Chlorobenzene-d5	10.055	117	179281	50.000	ug/l	0.00
72) 1,4-Dichlorobenzene-d4	12.024	152	80671	50.000	ug/l	0.00
System Monitoring Compounds						
33) 1,2-Dichloroethane-d4	5.958	65	71857	52.429	ug/l	0.00
Spiked Amount	50.000	Range 78 - 117	Recovery	=	104.860%	
35) Dibromofluoromethane	5.391	113	58686	51.733	ug/l	0.00
Spiked Amount	50.000	Range 75 - 124	Recovery	=	103.460%	
50) Toluene-d8	8.653	98	224491	53.911	ug/l	0.00
Spiked Amount	50.000	Range 92 - 112	Recovery	=	107.820%	
62) 4-Bromofluorobenzene	11.079	95	89536	61.073	ug/l	0.00
Spiked Amount	50.000	Range 83 - 123	Recovery	=	122.140%	
Target Compounds						
						Qvalue
4) Vinyl Chloride	1.374	62	260925	215.817	ug/l	99
5) Bromomethane	1.624	94	133	0.259	ug/l #	46
8) Diethyl Ether	2.136	74	964	1.463	ug/l	99
10) Methyl Iodide	2.459	142	157	2.347	ug/l #	37
11) Tert butyl alcohol	2.953	59	2008	8.110	ug/l #	75
15) Acrylonitrile	3.111	53	1593	2.245	ug/l #	29
16) Acetone	2.380	43	7886	13.100	ug/l	92
19) Methyl tert-butyl Ether	3.117	73	140349	33.934	ug/l	100
21) trans-1,2-Dichloroethene	3.099	96	8627	7.016	ug/l	97
22) Diisopropyl ether	3.764	45	1830	0.439	ug/l #	82
23) Vinyl Acetate	3.764	43	901	0.257	ug/l #	73
25) 2-Butanone	4.568	43	2748	2.833	ug/l #	80
27) cis-1,2-Dichloroethene	4.489	96	443704	314.287	ug/l	88
29) Tetrahydrofuran	5.038	42	415	0.629	ug/l #	69
31) Cyclohexane	5.489	56	578	0.265	ug/l #	45
36) 1,1-Dichloropropene	5.550	75	8597	4.804	ug/l #	51
37) Ethyl Acetate	4.568	43	2748	1.351	ug/l #	69
38) Carbon Tetrachloride	5.556	117	11391	6.070	ug/l #	17
39) Methylcyclohexane	7.385	83	2433	1.109	ug/l	96
40) Benzene	6.044	78	116735	22.381	ug/l	100
41) Methacrylonitrile	5.026	41	274	0.249	ug/l #	29
42) 1,2-Dichloroethane	6.050	62	1148	0.625	ug/l #	75
43) Isopropyl Acetate	6.330	43	60818	19.435	ug/l #	13
44) Trichloroethene	7.129	130	412	0.263	ug/l	82
48) Methyl methacrylate	7.690	41	682	0.440	ug/l #	36
51) 4-Methyl-2-Pentanone	8.580	43	579	0.305	ug/l	95
52) Toluene	8.720	92	120387	36.456	ug/l	100
53) t-1,3-Dichloropropene	8.720	75	1510	2.126	ug/l #	1
55) 1,1,2-Trichloroethane	9.104	97	945	0.756	ug/l #	15
59) 2-Hexanone	9.452	43	1049	0.756	ug/l	69
60) Dibromochloromethane	9.281	129	658	0.512	ug/l #	11
64) Tetrachloroethene	9.275	164	664	0.369	ug/l #	82
67) Ethyl Benzene	10.195	91	451082	68.739	ug/l	99
68) m/p-Xylenes	10.305	106	340988	135.056	ug/l	97
69) o-Xylene	10.646	106	354032	143.103	ug/l	97
70) Styrene	10.640	104	17307	4.313	ug/l #	1

Data Path : Z:\voasrv\HPCHEM1\MSVOA_X\Data\VX021622\
 Data File : VX027041.D
 Acq On : 15 Feb 2022 20:02
 Operator : JC/MD
 Sample : N1541-05
 Misc : 5.0mL/MSVOA_X/WATER
 ALS Vial : 11 Sample Multiplier: 1

Instrument :
 MSVOA_X
 ClientSampleId :
 MW-11

Quant Time: Feb 16 04:09:24 2022
 Quant Method : Z:\voasrv\HPCHEM1\MSVOA_X\Method\82X020822W.M
 Quant Title : SW846 8260
 QLast Update : Tue Feb 08 07:07:46 2022
 Response via : Initial Calibration

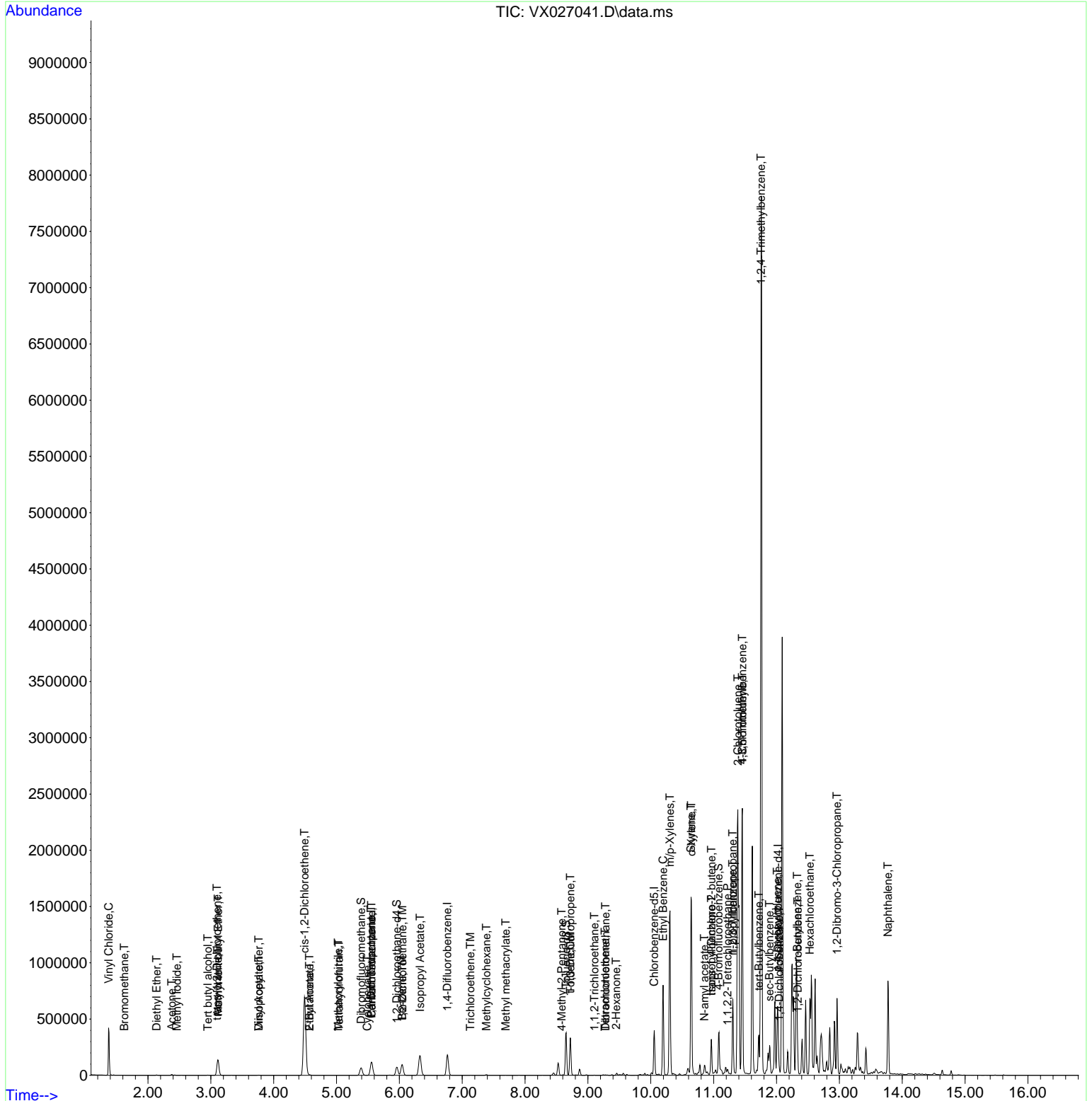
Compound	R.T.	QIon	Response	Conc	Units	Dev(Min)
73) Isopropylbenzene	10.963	105	157353	24.763	ug/l	98
74) N-amyl acetate	10.854	43	7767	3.059	ug/l #	1
75) 1,1,2,2-Tetrachloroethane	11.220	83	3383	1.962	ug/l #	26
76) 1,2,3-Trichloropropane	11.305	75	2488	1.409	ug/l #	1
78) n-propylbenzene	11.305	91	397549	56.435	ug/l	100
79) 2-Chlorotoluene	11.384	91	218150	50.120	ug/l #	42
80) 1,3,5-Trimethylbenzene	11.457	105	1050842	200.936	ug/l	98
81) trans-1,4-Dichloro-2-b...	10.963	75	1841	6.431	ug/l #	61
82) 4-Chlorotoluene	11.457	91	114709	23.492	ug/l #	46
83) tert-Butylbenzene	11.719	119	114833	23.038	ug/l	94
84) 1,2,4-Trimethylbenzene	11.756	105	3468363	657.507	ug/l	94
85) sec-Butylbenzene	11.890	105	122236	19.347	ug/l	99
86) p-Isopropyltoluene	12.012	119	157768	29.475	ug/l	98
88) 1,4-Dichlorobenzene	12.043	146	773	0.277	ug/l #	1
89) n-Butylbenzene	12.329	91	159032	36.314	ug/l #	30
90) Hexachloroethane	12.530	117	27583	35.654	ug/l #	14
91) 1,2-Dichlorobenzene	12.341	146	631	0.236	ug/l	91
92) 1,2-Dibromo-3-Chloropr...	12.963	75	2119	4.997	ug/l #	3
95) Naphthalene	13.774	128	499427	84.598	ug/l	100

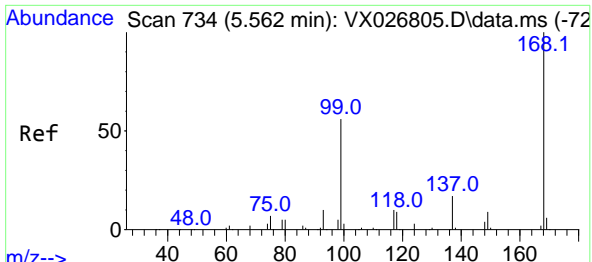
(#) = qualifier out of range (m) = manual integration (+) = signals summed

Data Path : Z:\voasrv\HPCHEM1\MSVOA_X\Data\VX021622\
 Data File : VX027041.D
 Acq On : 15 Feb 2022 20:02
 Operator : JC/MD
 Sample : N1541-05
 Misc : 5.0mL/MSVOA_X/WATER
 ALS Vial : 11 Sample Multiplier: 1

Instrument :
 MSVOA_X
 ClientSampleId :
 MW-11

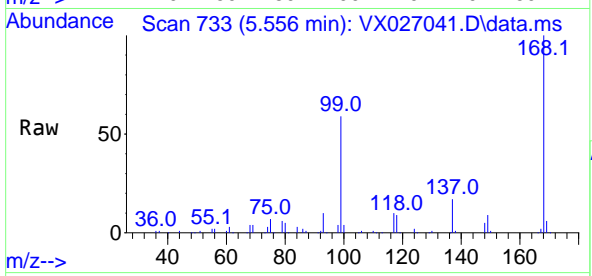
Quant Time: Feb 16 04:09:24 2022
 Quant Method : Z:\voasrv\HPCHEM1\MSVOA_X\Method\82X020822W.M
 Quant Title : SW846 8260
 QLast Update : Tue Feb 08 07:07:46 2022
 Response via : Initial Calibration



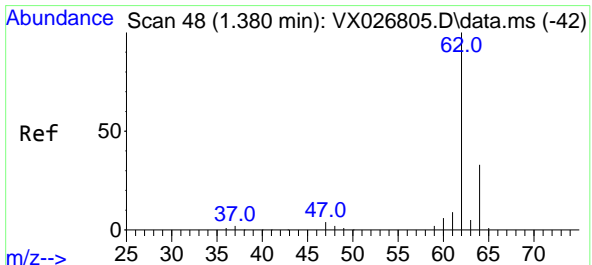
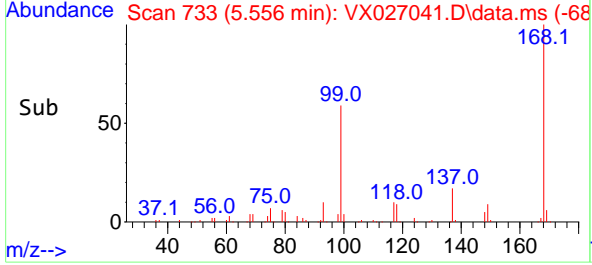
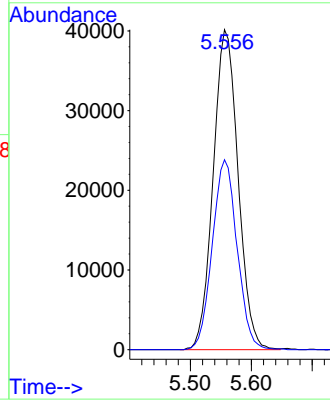


#1
 Pentafluorobenzene
 Concen: 50.000 ug/l
 RT: 5.556 min Scan# 71
 Delta R.T. -0.006 min
 Lab File: VX027041.D
 Acq: 15 Feb 2022 20:02

Instrument :
 MSVOA_X
 ClientSampleId :
 MW-11

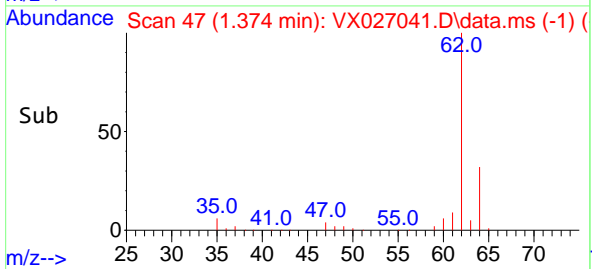
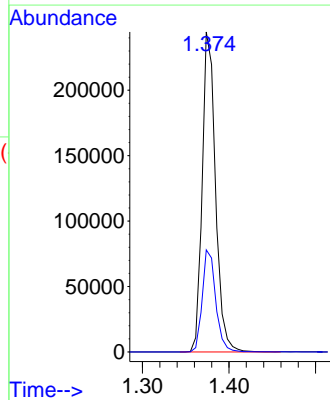
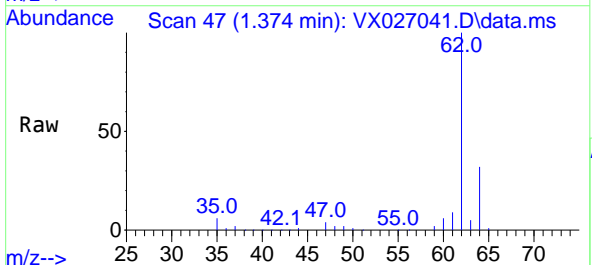


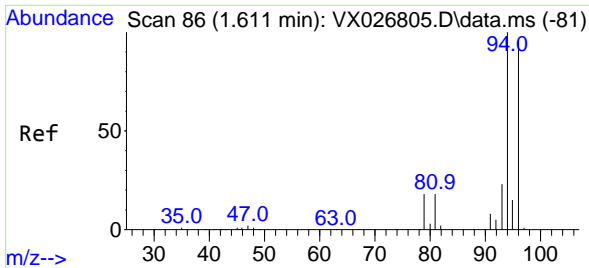
Tgt Ion:168 Resp: 114176
 Ion Ratio Lower Upper
 168 100
 99 59.3 50.3 75.5



#4
 Vinyl Chloride
 Concen: 215.817 ug/l
 RT: 1.374 min Scan# 47
 Delta R.T. -0.006 min
 Lab File: VX027041.D
 Acq: 15 Feb 2022 20:02

Tgt Ion: 62 Resp: 260925
 Ion Ratio Lower Upper
 62 100
 64 31.9 26.2 39.2

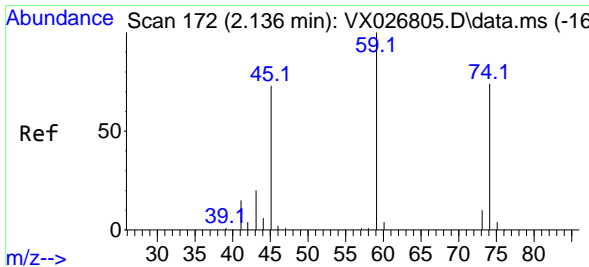
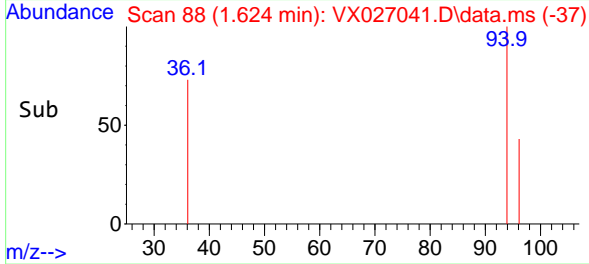
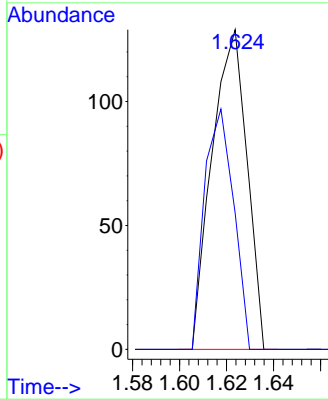
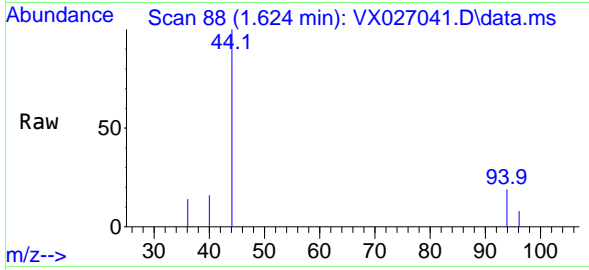




#5
 Bromomethane
 Concen: 0.259 ug/l
 RT: 1.624 min Scan# 81
 Delta R.T. 0.012 min
 Lab File: VX027041.D
 Acq: 15 Feb 2022 20:02

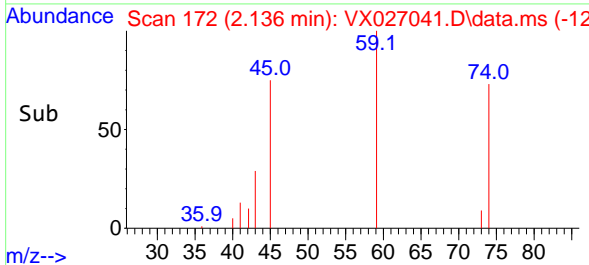
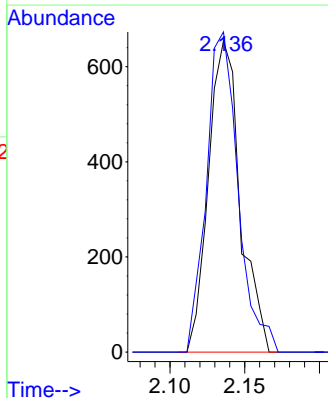
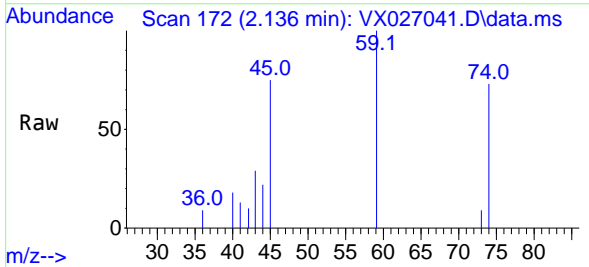
Instrument :
 MSVOA_X
 ClientSampleId :
 MW-11

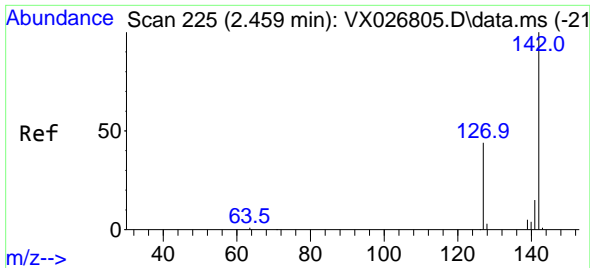
Tgt Ion: 94 Resp: 133
 Ion Ratio Lower Upper
 94 100
 96 42.6 75.9 113.9#



#8
 Diethyl Ether
 Concen: 1.463 ug/l
 RT: 2.136 min Scan# 172
 Delta R.T. 0.000 min
 Lab File: VX027041.D
 Acq: 15 Feb 2022 20:02

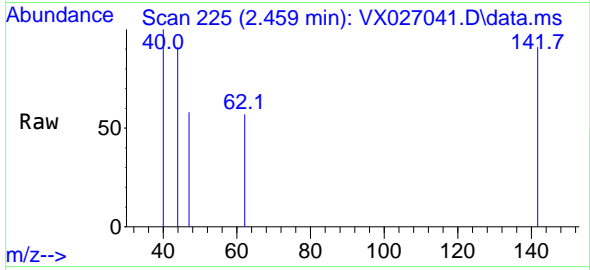
Tgt Ion: 74 Resp: 964
 Ion Ratio Lower Upper
 74 100
 45 102.7 50.7 152.1



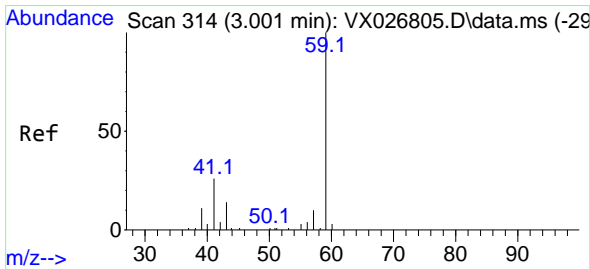
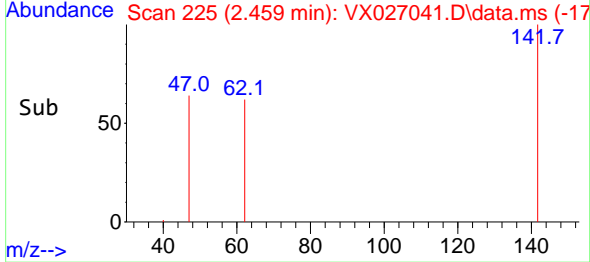
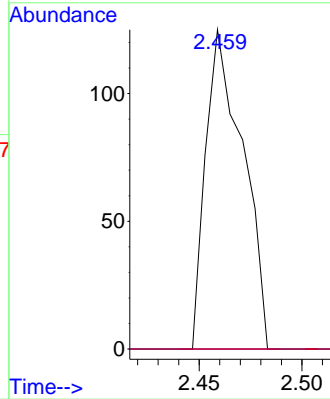


#10
Methyl Iodide
Concen: 2.347 ug/l
RT: 2.459 min Scan# 21
Delta R.T. -0.000 min
Lab File: VX027041.D
Acq: 15 Feb 2022 20:02

Instrument : MSVOA_X
ClientSampleId : MW-11

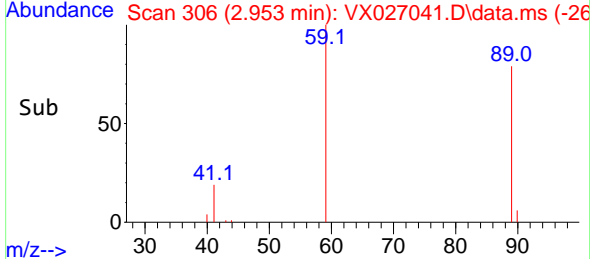
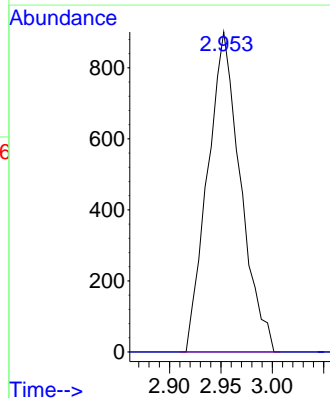
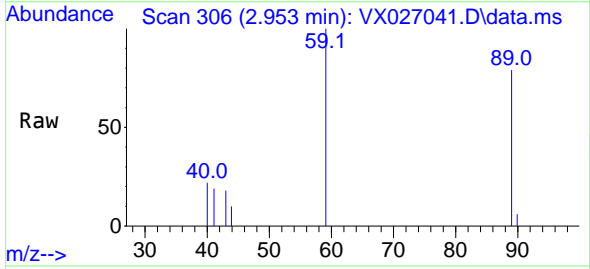


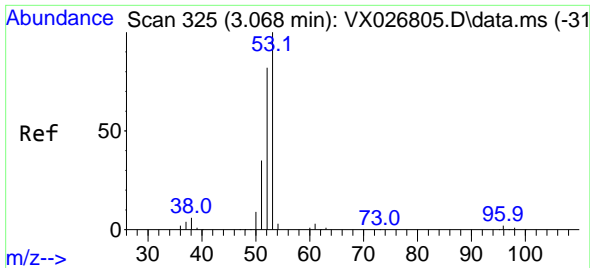
Tgt Ion:142 Resp: 157
Ion Ratio Lower Upper
142 100
127 0.0 38.1 57.1#
141 0.0 11.2 16.8#



#11
Tert butyl alcohol
Concen: 8.110 ug/l
RT: 2.953 min Scan# 306
Delta R.T. -0.048 min
Lab File: VX027041.D
Acq: 15 Feb 2022 20:02

Tgt Ion: 59 Resp: 2008
Ion Ratio Lower Upper
59 100
57 0.0 7.2 10.8#

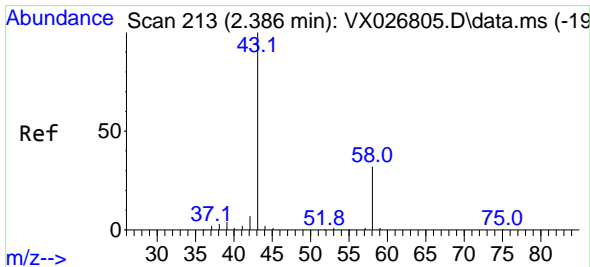
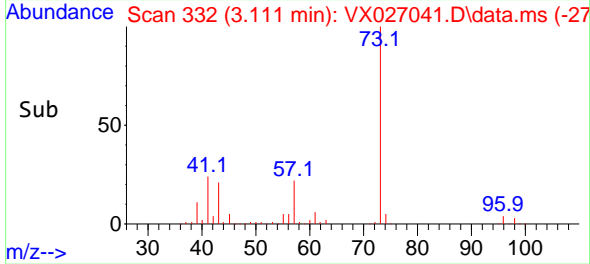
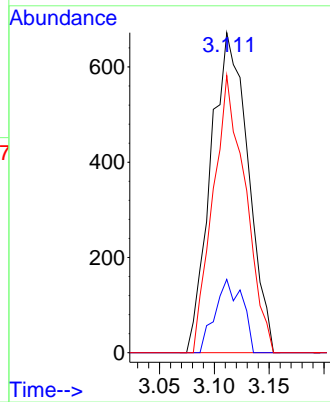
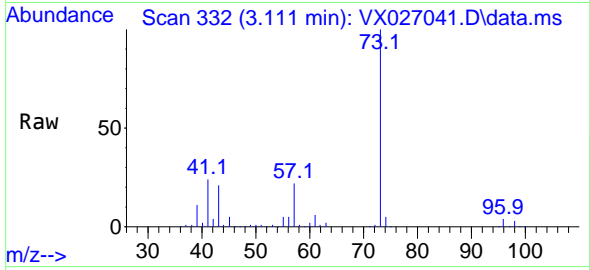




#15
 Acrylonitrile
 Concen: 2.245 ug/l
 RT: 3.111 min Scan# 31
 Delta R.T. 0.043 min
 Lab File: VX027041.D
 Acq: 15 Feb 2022 20:02

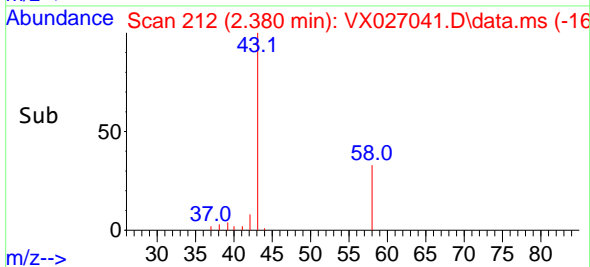
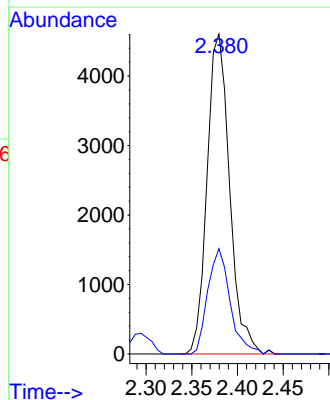
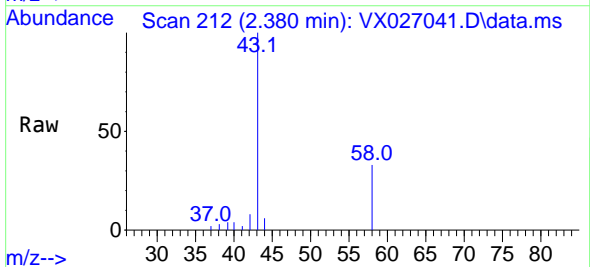
Instrument :
 MSVOA_X
 ClientSampleId :
 MW-11

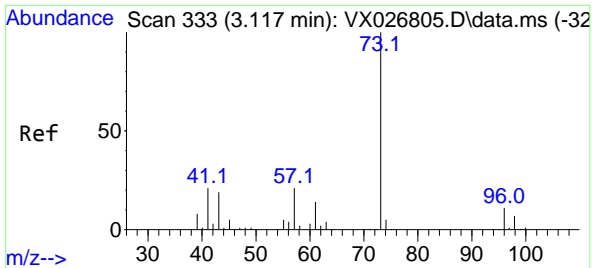
Tgt Ion: 53 Resp: 1593
 Ion Ratio Lower Upper
 53 100
 52 16.6 66.6 100.0#
 51 75.2 29.5 44.3#



#16
 Acetone
 Concen: 13.100 ug/l
 RT: 2.380 min Scan# 212
 Delta R.T. -0.006 min
 Lab File: VX027041.D
 Acq: 15 Feb 2022 20:02

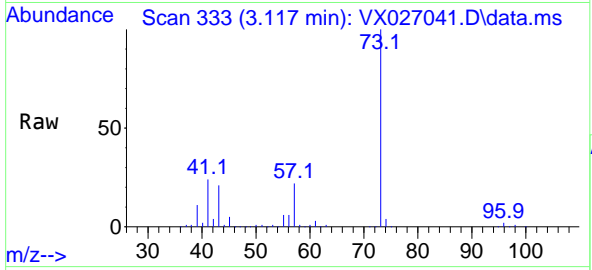
Tgt Ion: 43 Resp: 7886
 Ion Ratio Lower Upper
 43 100
 58 32.9 23.0 34.6



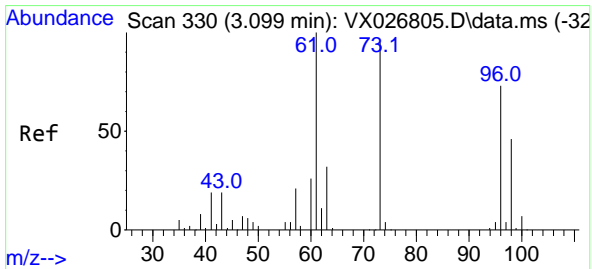
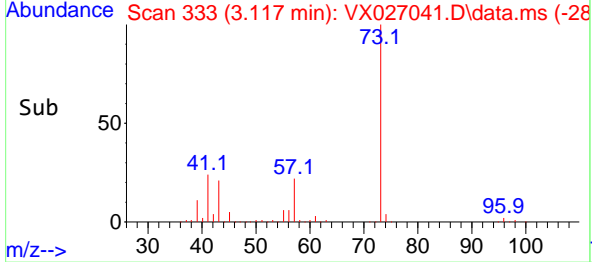
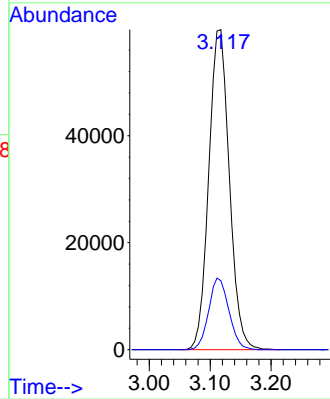


#19
 Methyl tert-butyl Ether
 Concen: 33.934 ug/l
 RT: 3.117 min Scan# 31
 Delta R.T. 0.000 min
 Lab File: VX027041.D
 Acq: 15 Feb 2022 20:02

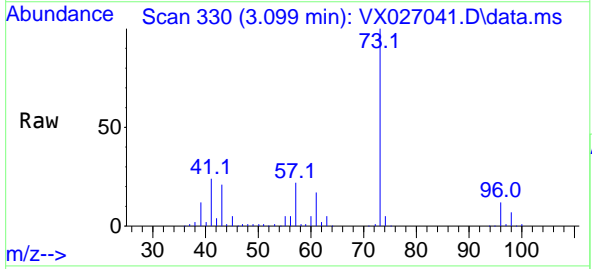
Instrument :
 MSVOA_X
 ClientSampleId :
 MW-11



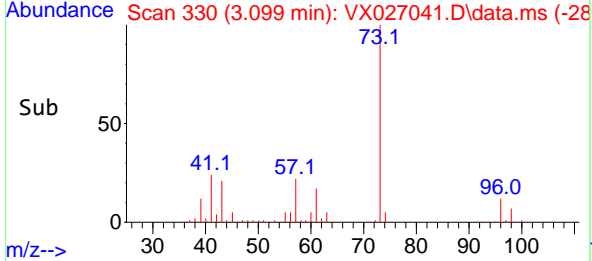
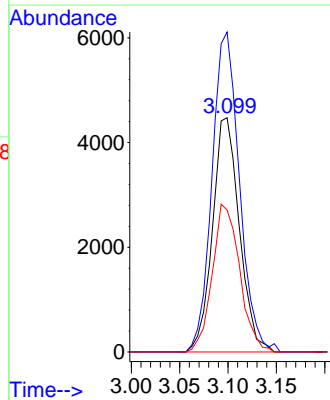
Tgt Ion: 73 Resp: 140349
 Ion Ratio Lower Upper
 73 100
 57 21.6 17.4 26.2

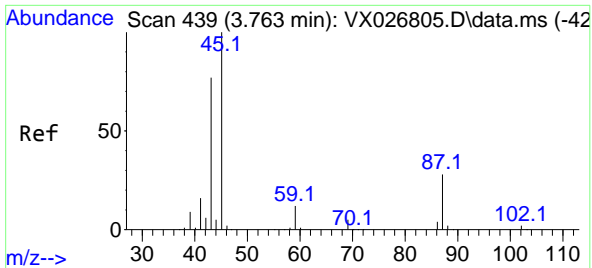


#21
 trans-1,2-Dichloroethene
 Concen: 7.016 ug/l
 RT: 3.099 min Scan# 330
 Delta R.T. 0.000 min
 Lab File: VX027041.D
 Acq: 15 Feb 2022 20:02



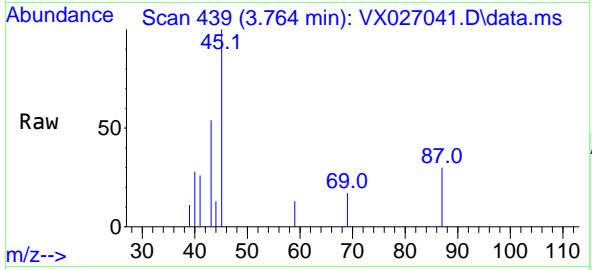
Tgt Ion: 96 Resp: 8627
 Ion Ratio Lower Upper
 96 100
 61 136.6 112.9 169.3
 98 60.6 49.5 74.3





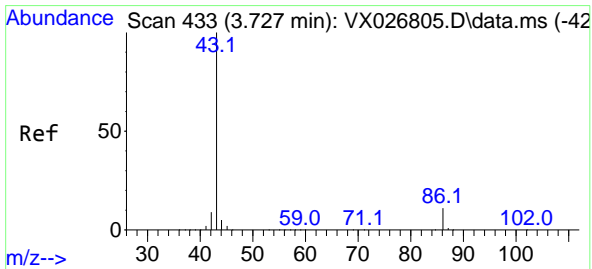
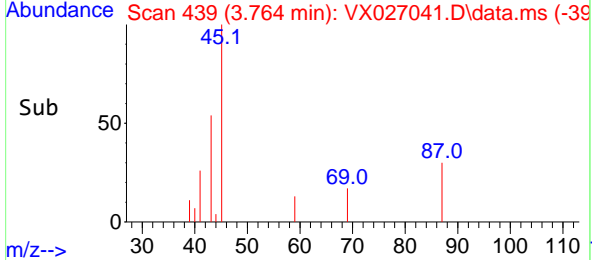
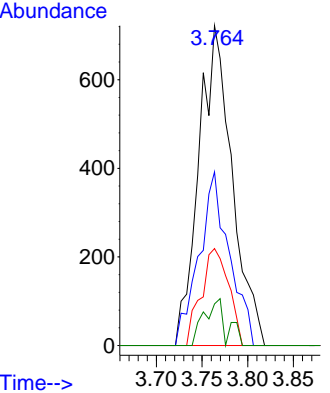
#22
 Diisopropyl ether
 Concen: 0.439 ug/l
 RT: 3.764 min Scan# 41
 Delta R.T. 0.000 min
 Lab File: VX027041.D
 Acq: 15 Feb 2022 20:02

Instrument :
 MSVOA_X
 ClientSampleId :
 MW-11

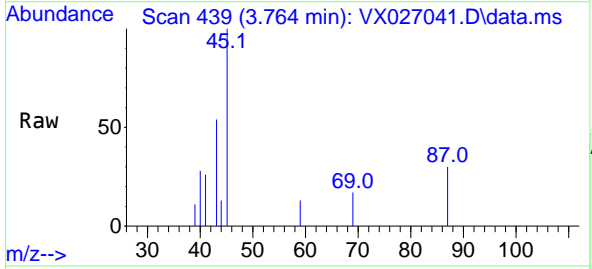


Tgt Ion: 45 Resp: 1830

Ion	Ratio	Lower	Upper
45	100		
43	54.3	60.6	91.0#
87	30.3	22.0	33.0
59	13.0	9.0	13.4

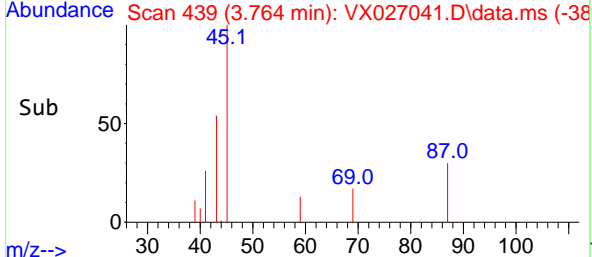
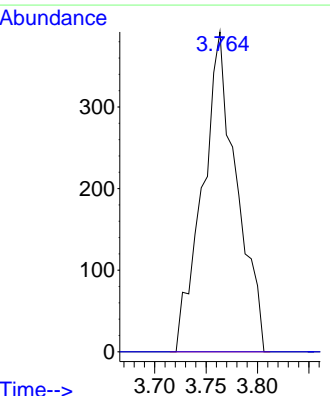


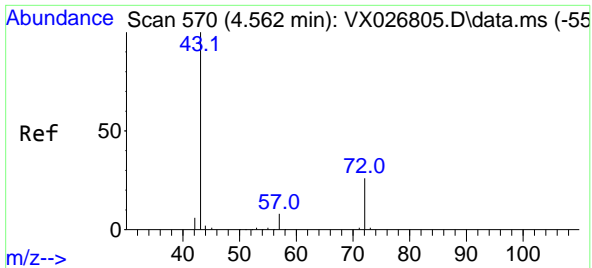
#23
 Vinyl Acetate
 Concen: 0.257 ug/l
 RT: 3.764 min Scan# 439
 Delta R.T. 0.037 min
 Lab File: VX027041.D
 Acq: 15 Feb 2022 20:02



Tgt Ion: 43 Resp: 901

Ion	Ratio	Lower	Upper
43	100		
86	0.0	8.1	12.1#

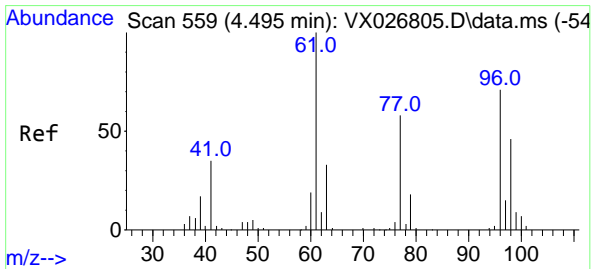
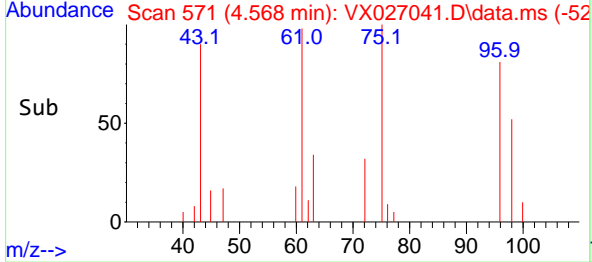
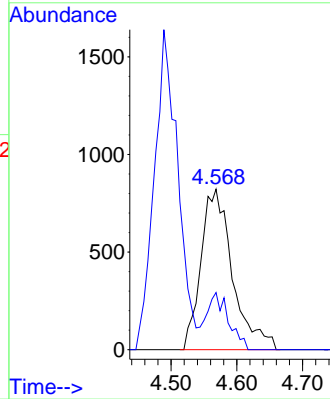
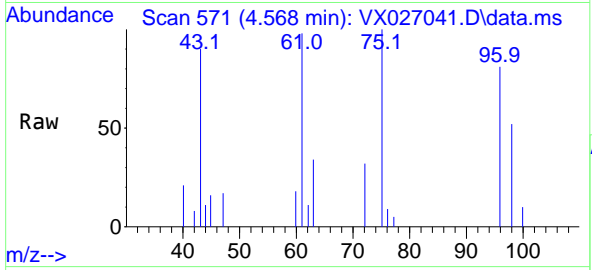




#25
 2-Butanone
 Concen: 2.833 ug/l
 RT: 4.568 min Scan# 51
 Delta R.T. 0.006 min
 Lab File: VX027041.D
 Acq: 15 Feb 2022 20:02

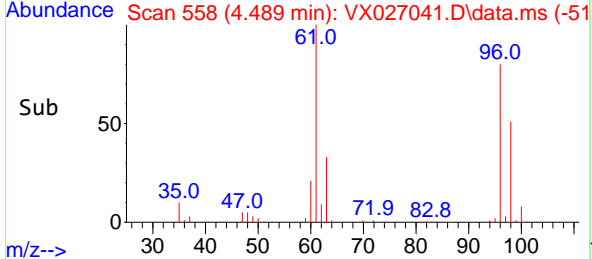
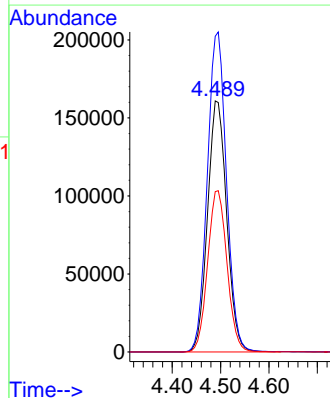
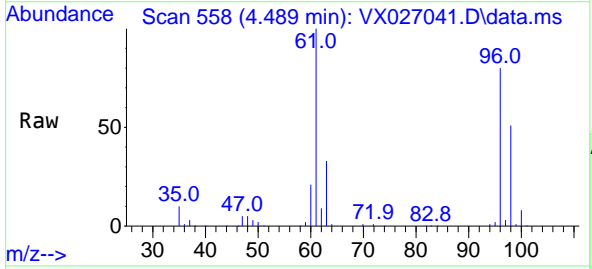
Instrument :
 MSVOA_X
 ClientSampleId :
 MW-11

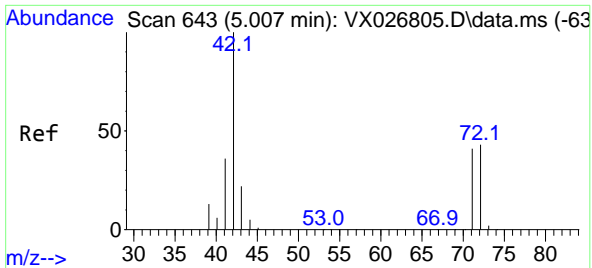
Tgt Ion: 43 Resp: 2748
 Ion Ratio Lower Upper
 43 100
 72 35.6 20.4 30.6#



#27
 cis-1,2-Dichloroethene
 Concen: 314.287 ug/l
 RT: 4.489 min Scan# 558
 Delta R.T. -0.006 min
 Lab File: VX027041.D
 Acq: 15 Feb 2022 20:02

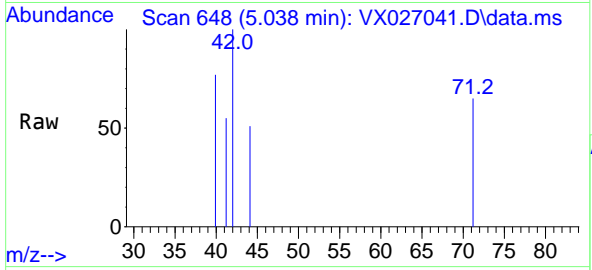
Tgt Ion: 96 Resp: 443704
 Ion Ratio Lower Upper
 96 100
 61 127.3 0.0 296.6
 98 64.9 0.0 128.8





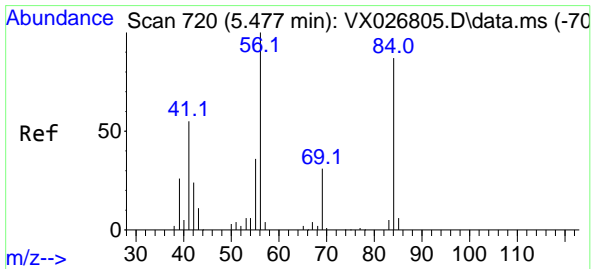
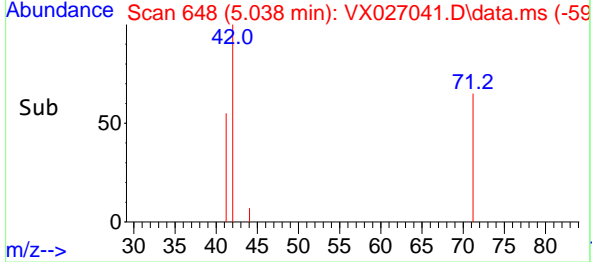
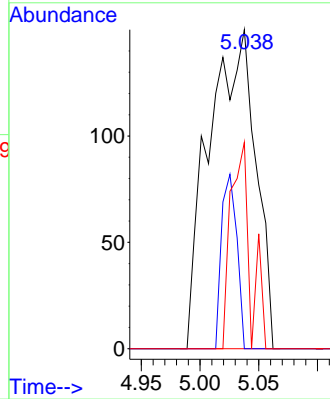
#29
 Tetrahydrofuran
 Concen: 0.629 ug/l
 RT: 5.038 min Scan# 643
 Delta R.T. 0.031 min
 Lab File: VX027041.D
 Acq: 15 Feb 2022 20:02

Instrument : MSVOA_X
 ClientSampleId : MW-11

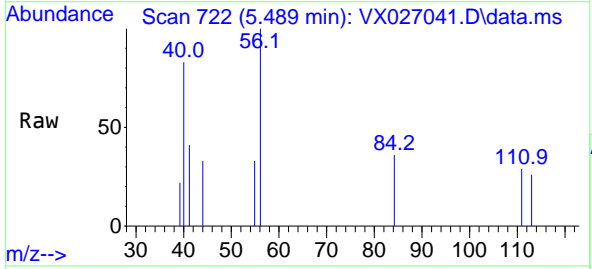


Tgt Ion: 42 Resp: 415

Ion	Ratio	Lower	Upper
42	100		
72	17.8	34.6	52.0#
71	27.0	31.8	47.8#

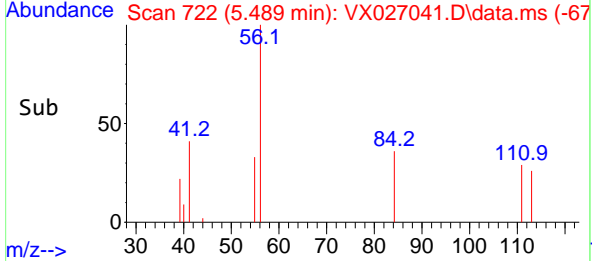
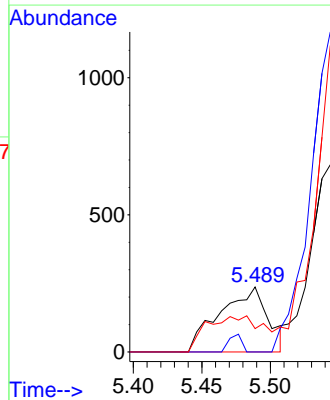


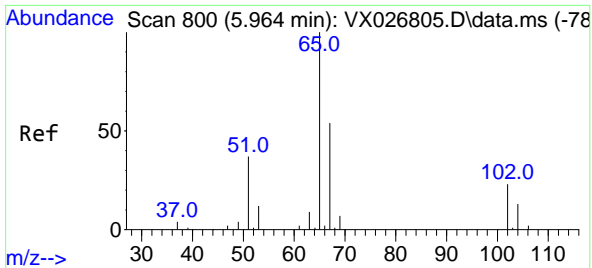
#31
 Cyclohexane
 Concen: 0.265 ug/l
 RT: 5.489 min Scan# 722
 Delta R.T. 0.012 min
 Lab File: VX027041.D
 Acq: 15 Feb 2022 20:02



Tgt Ion: 56 Resp: 578

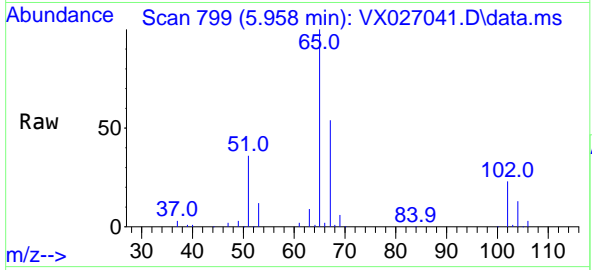
Ion	Ratio	Lower	Upper
56	100		
69	0.0	25.8	38.6#
84	35.9	68.9	103.3#



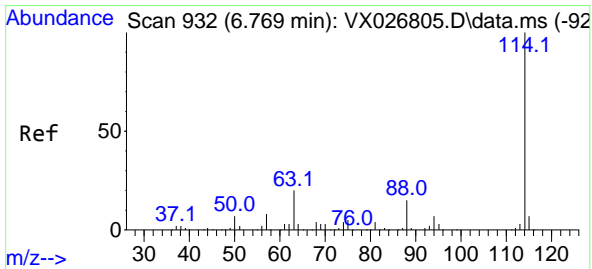
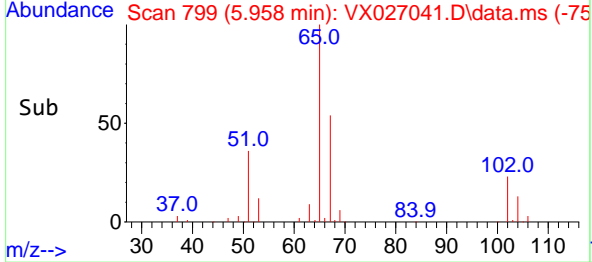
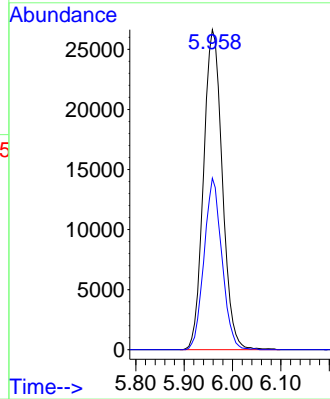


#33
 1,2-Dichloroethane-d4
 Concen: 52.429 ug/l
 RT: 5.958 min Scan# 71
 Delta R.T. -0.006 min
 Lab File: VX027041.D
 Acq: 15 Feb 2022 20:02

Instrument : MSVOA_X
 ClientSampleId : MW-11

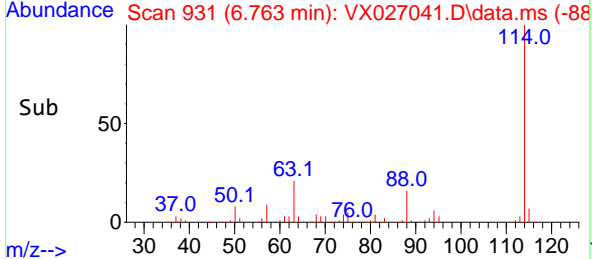
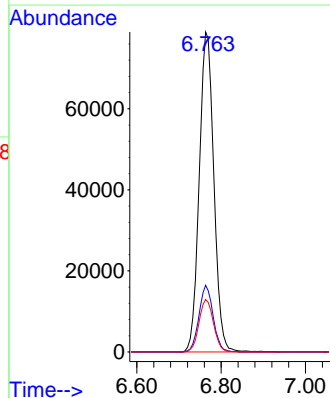
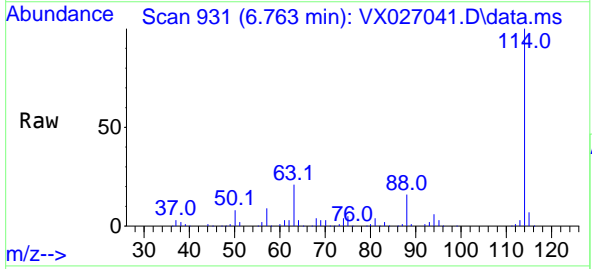


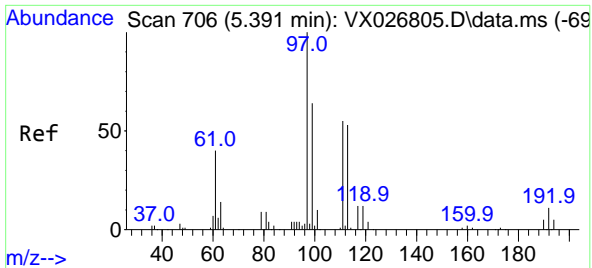
Tgt Ion: 65 Resp: 71857
 Ion Ratio Lower Upper
 65 100
 67 51.1 0.0 100.8



#34
 1,4-Difluorobenzene
 Concen: 50.000 ug/l
 RT: 6.763 min Scan# 931
 Delta R.T. -0.006 min
 Lab File: VX027041.D
 Acq: 15 Feb 2022 20:02

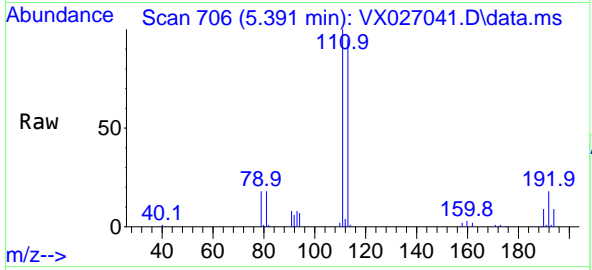
Tgt Ion: 114 Resp: 190408
 Ion Ratio Lower Upper
 114 100
 63 20.9 0.0 42.8
 88 16.4 0.0 33.0





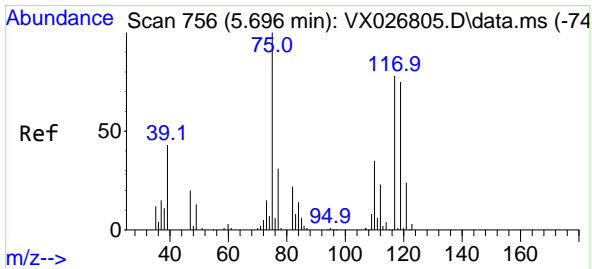
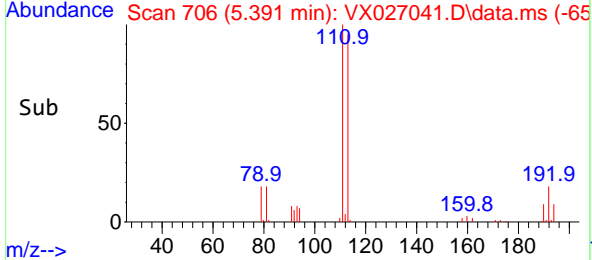
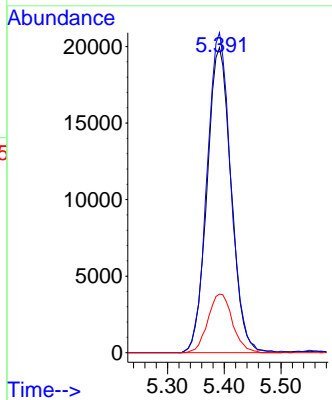
#35
 Dibromofluoromethane
 Concen: 51.733 ug/l
 RT: 5.391 min Scan# 706
 Delta R.T. 0.000 min
 Lab File: VX027041.D
 Acq: 15 Feb 2022 20:02

Instrument : MSVOA_X
 ClientSampleId : MW-11



Tgt Ion: 113 Resp: 58686

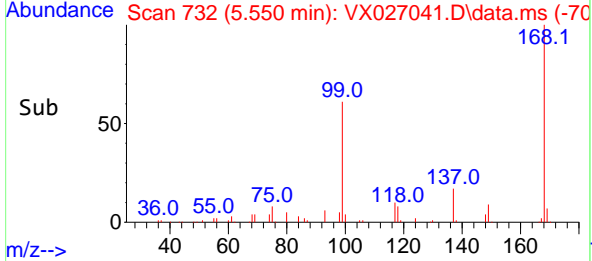
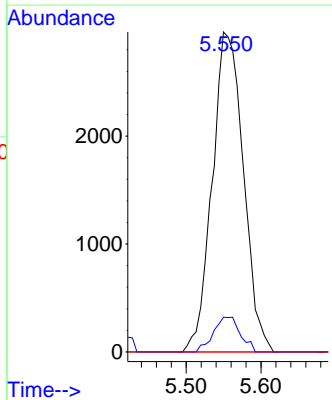
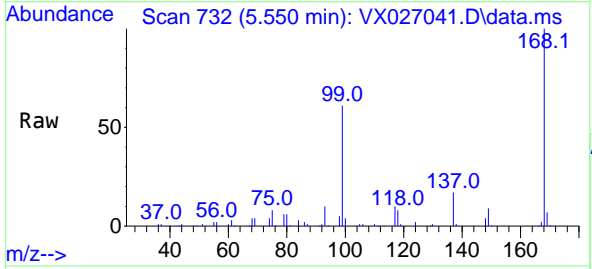
Ion	Ratio	Lower	Upper
113	100		
111	103.7	81.2	121.8
192	19.6	15.0	22.4

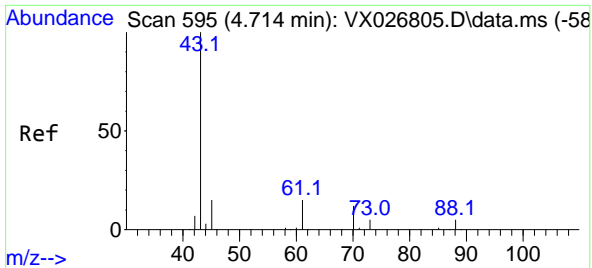


#36
 1,1-Dichloropropene
 Concen: 4.804 ug/l
 RT: 5.550 min Scan# 732
 Delta R.T. -0.146 min
 Lab File: VX027041.D
 Acq: 15 Feb 2022 20:02

Tgt Ion: 75 Resp: 8597

Ion	Ratio	Lower	Upper
75	100		
110	9.4	17.2	51.6#
77	0.0	24.6	36.8#



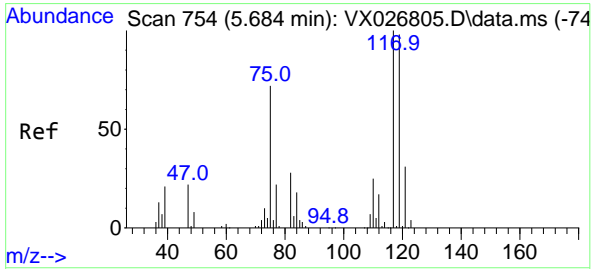
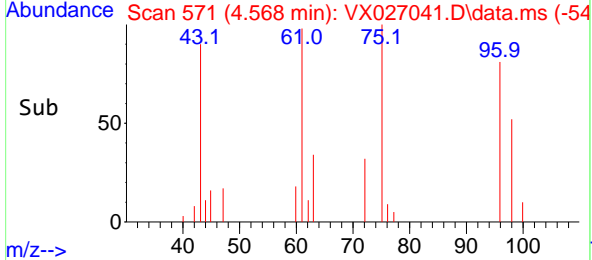
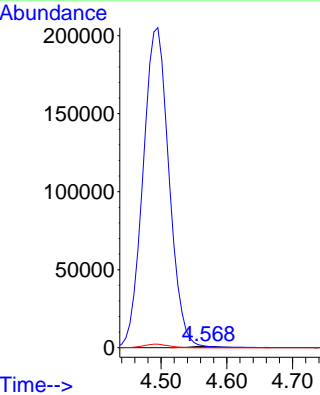
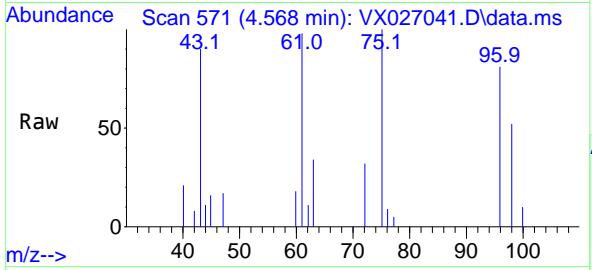


#37
 Ethyl Acetate
 Concen: 1.351 ug/l
 RT: 4.568 min Scan# 51
 Delta R.T. -0.146 min
 Lab File: VX027041.D
 Acq: 15 Feb 2022 20:02

Instrument : MSVOA_X
 ClientSampleId : MW-11

Tgt Ion: 43 Resp: 2748

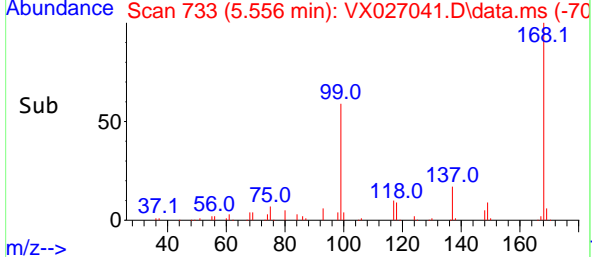
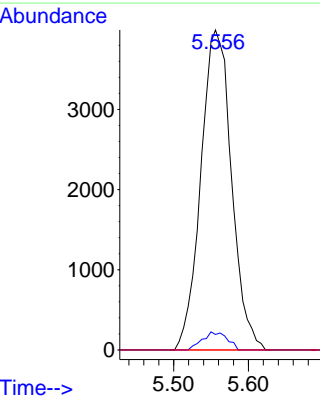
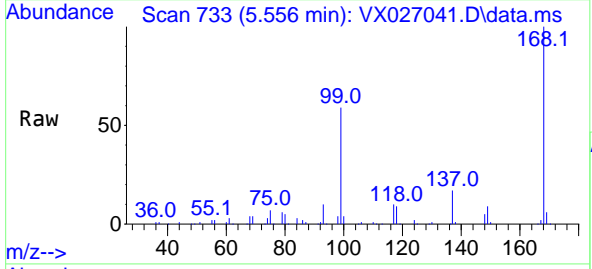
Ion	Ratio	Lower	Upper
43	100		
61	0.0	10.6	16.0#
70	0.0	8.5	12.7#

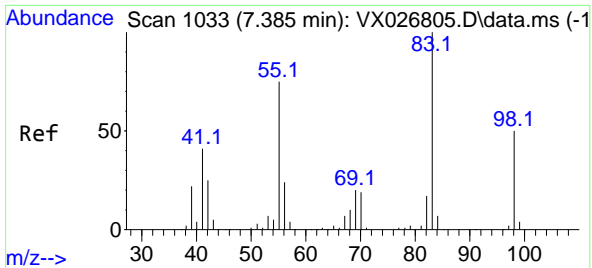


#38
 Carbon Tetrachloride
 Concen: 6.070 ug/l
 RT: 5.556 min Scan# 733
 Delta R.T. -0.128 min
 Lab File: VX027041.D
 Acq: 15 Feb 2022 20:02

Tgt Ion: 117 Resp: 11391

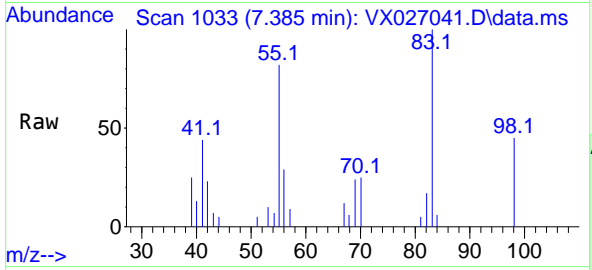
Ion	Ratio	Lower	Upper
117	100		
119	4.8	74.7	112.1#
121	0.0	25.4	38.0#





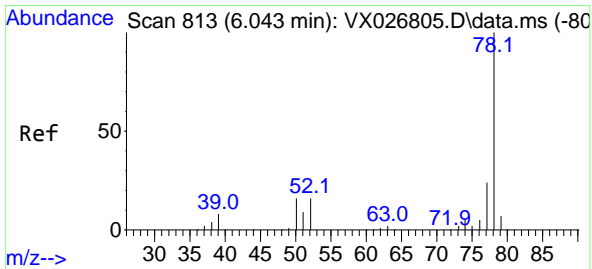
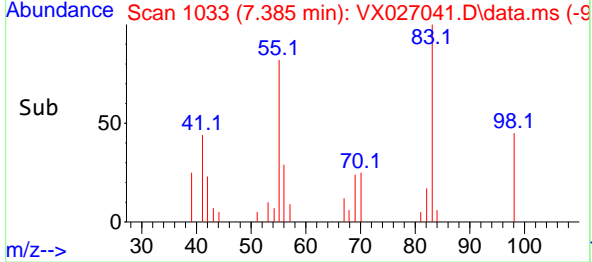
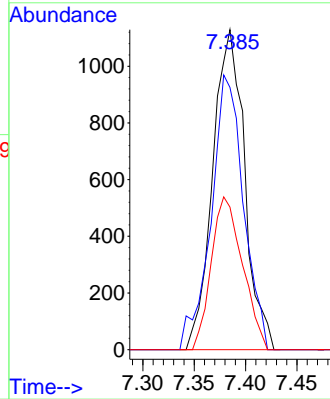
#39
 Methylcyclohexane
 Concen: 1.109 ug/l
 RT: 7.385 min Scan# 1033
 Delta R.T. 0.000 min
 Lab File: VX027041.D
 Acq: 15 Feb 2022 20:02

Instrument : MSVOA_X
 ClientSampleId : MW-11



Tgt Ion: 83 Resp: 2433

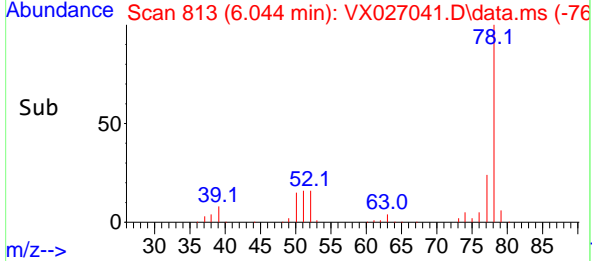
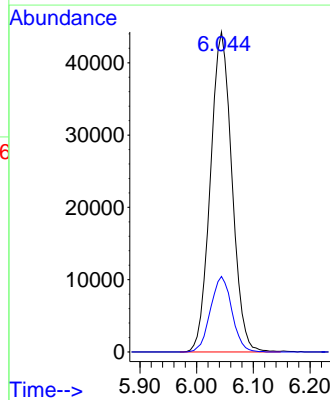
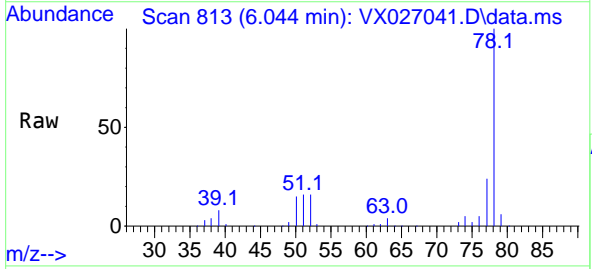
Ion	Ratio	Lower	Upper
83	100		
55	81.9	63.6	95.4
98	44.6	38.4	57.6

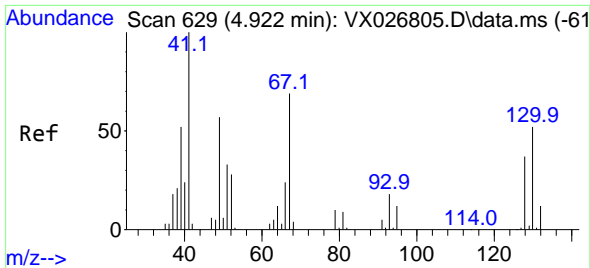


#40
 Benzene
 Concen: 22.381 ug/l
 RT: 6.044 min Scan# 813
 Delta R.T. 0.000 min
 Lab File: VX027041.D
 Acq: 15 Feb 2022 20:02

Tgt Ion: 78 Resp: 116735

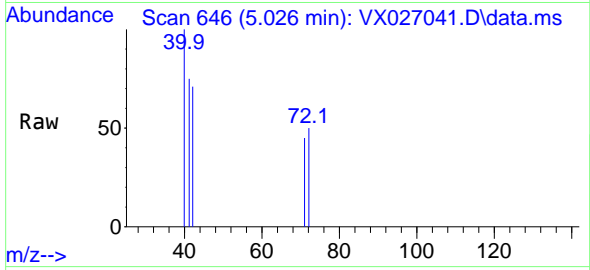
Ion	Ratio	Lower	Upper
78	100		
77	23.6	18.9	28.3





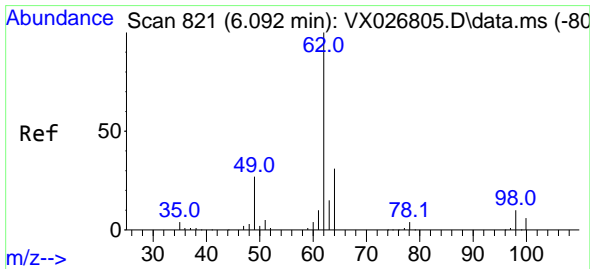
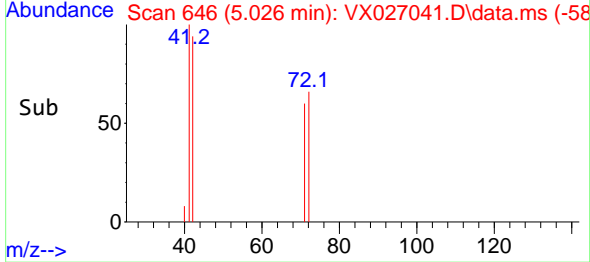
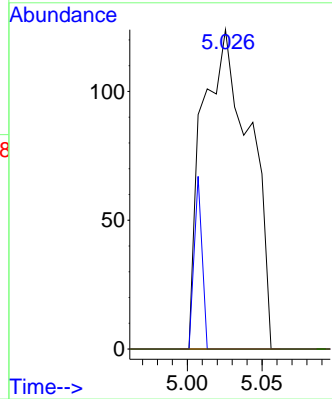
#41
 Methacrylonitrile
 Concen: 0.249 ug/l
 RT: 5.026 min Scan# 641
 Delta R.T. 0.104 min
 Lab File: VX027041.D
 Acq: 15 Feb 2022 20:02

Instrument : MSVOA_X
 ClientSampleId : MW-11

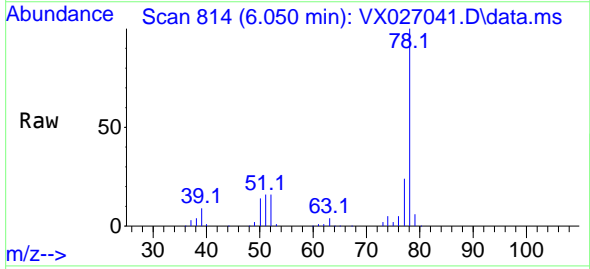


Tgt Ion: 41 Resp: 274

Ion	Ratio	Lower	Upper
41	100		
39	9.1	45.4	68.0#
67	0.0	53.2	79.8#
52	0.0	23.0	34.6#

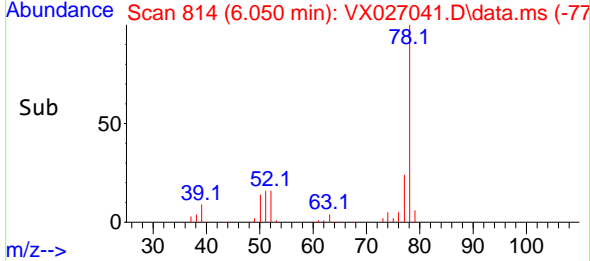
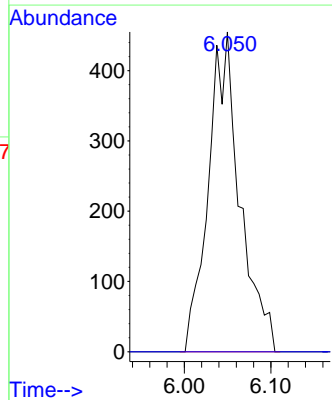


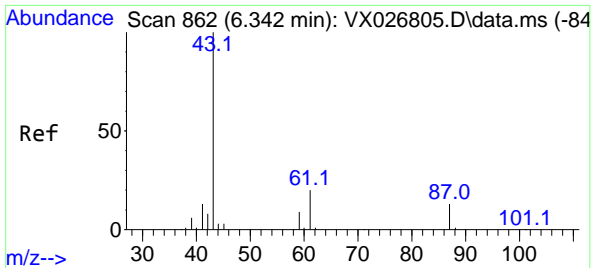
#42
 1,2-Dichloroethane
 Concen: 0.625 ug/l
 RT: 6.050 min Scan# 814
 Delta R.T. -0.043 min
 Lab File: VX027041.D
 Acq: 15 Feb 2022 20:02



Tgt Ion: 62 Resp: 1148

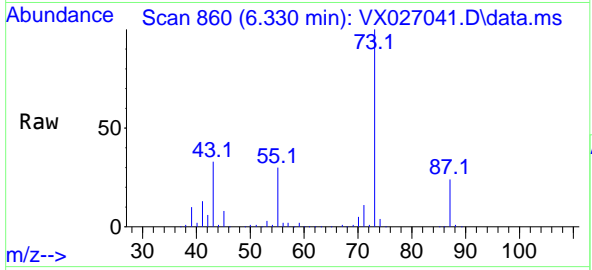
Ion	Ratio	Lower	Upper
62	100		
98	0.0	0.0	17.8



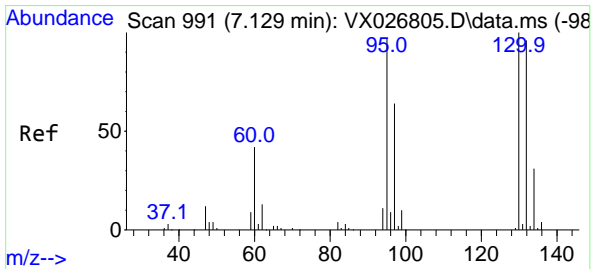
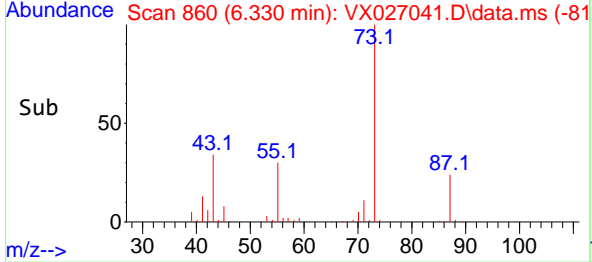
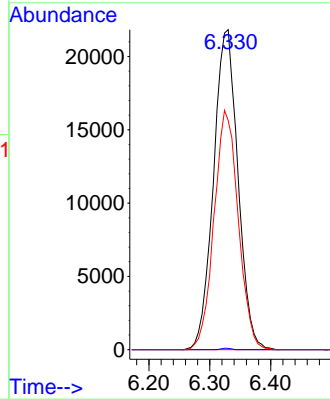


#43
 Isopropyl Acetate
 Concen: 19.435 ug/l
 RT: 6.330 min Scan# 862
 Delta R.T. -0.012 min
 Lab File: VX027041.D
 Acq: 15 Feb 2022 20:02

Instrument : MSVOA_X
 ClientSampleId : MW-11

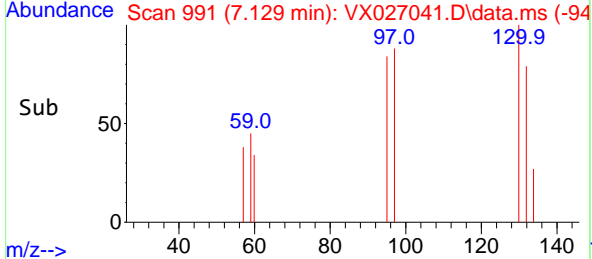
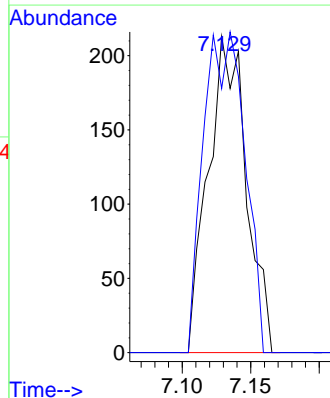
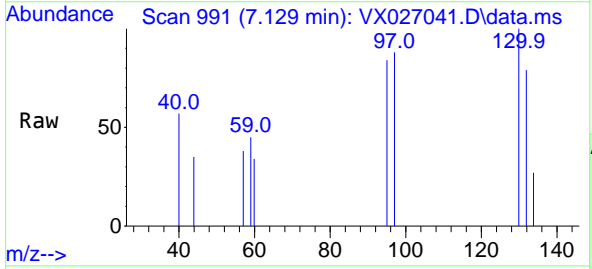


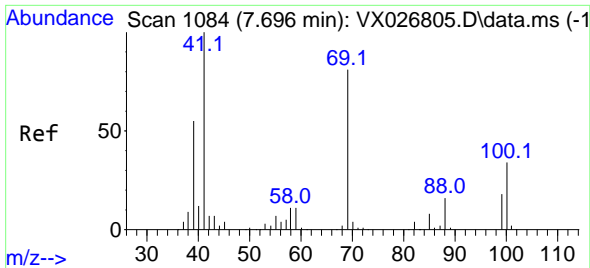
Tgt Ion: 43 Resp: 60818
 Ion Ratio Lower Upper
 43 100
 61 0.2 15.4 23.0#
 87 74.2 10.2 15.2#



#44
 Trichloroethene
 Concen: 0.263 ug/l
 RT: 7.129 min Scan# 991
 Delta R.T. 0.000 min
 Lab File: VX027041.D
 Acq: 15 Feb 2022 20:02

Tgt Ion:130 Resp: 412
 Ion Ratio Lower Upper
 130 100
 95 83.6 0.0 202.6



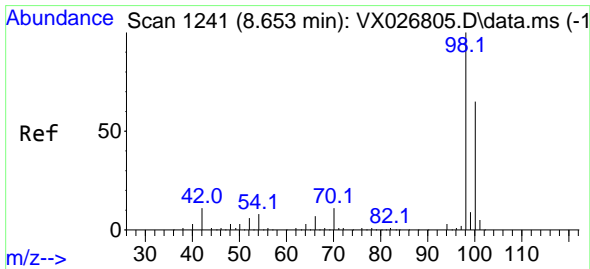
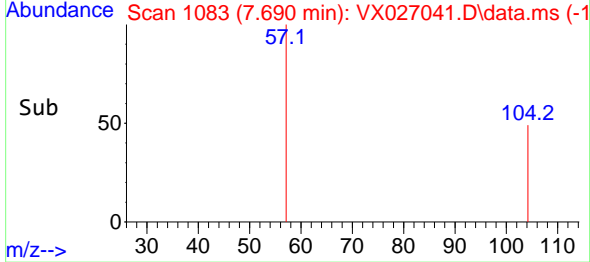
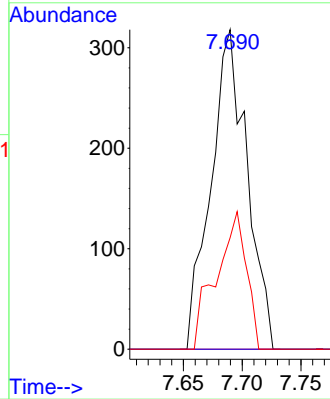
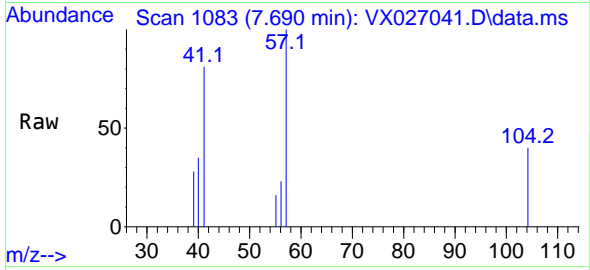


#48
 Methyl methacrylate
 Concen: 0.440 ug/l
 RT: 7.690 min Scan# 1084
 Delta R.T. -0.006 min
 Lab File: VX027041.D
 Acq: 15 Feb 2022 20:02

Instrument : MSVOA_X
 ClientSampleId : MW-11

Tgt Ion: 41 Resp: 682

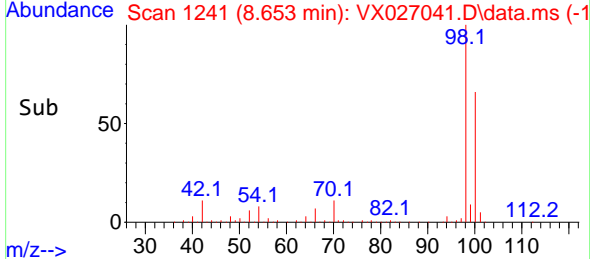
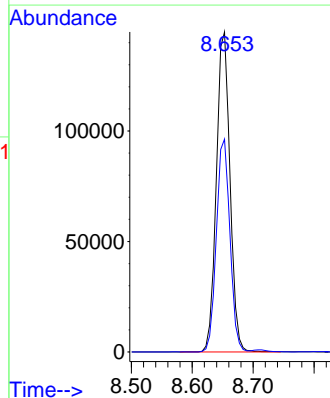
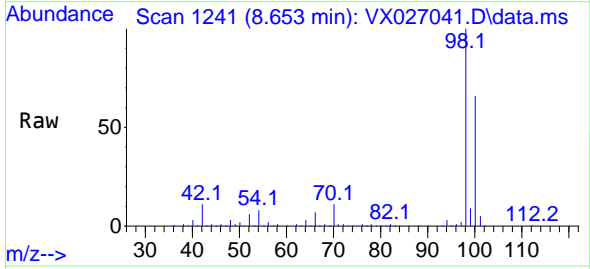
Ion	Ratio	Lower	Upper
41	100		
69	0.0	62.2	93.4#
39	36.1	45.4	68.0#

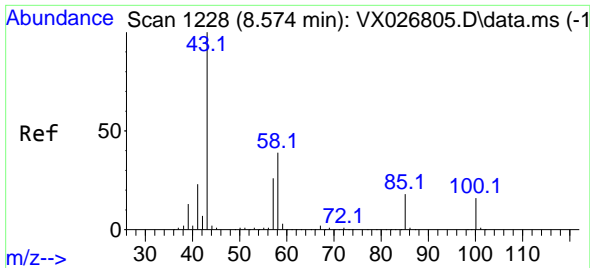


#50
 Toluene-d8
 Concen: 53.911 ug/l
 RT: 8.653 min Scan# 1241
 Delta R.T. 0.000 min
 Lab File: VX027041.D
 Acq: 15 Feb 2022 20:02

Tgt Ion: 98 Resp: 224491

Ion	Ratio	Lower	Upper
98	100		
100	66.1	53.2	79.8

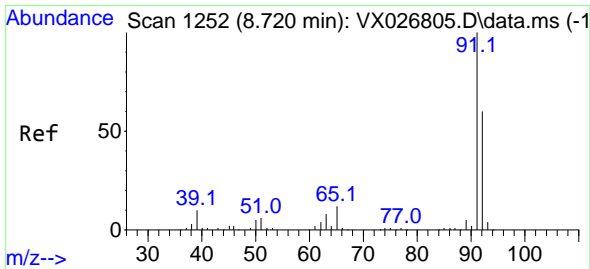
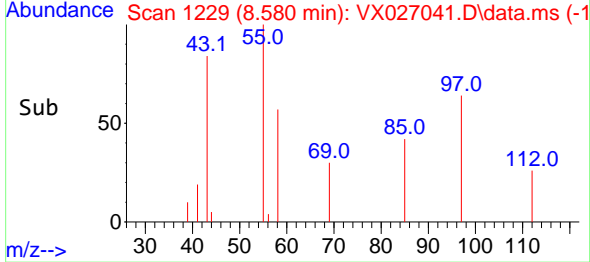
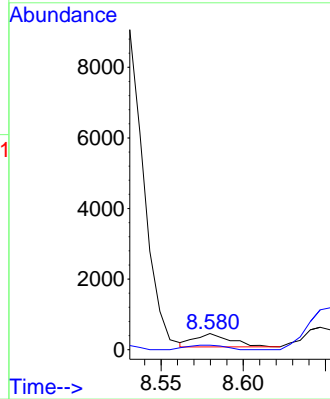
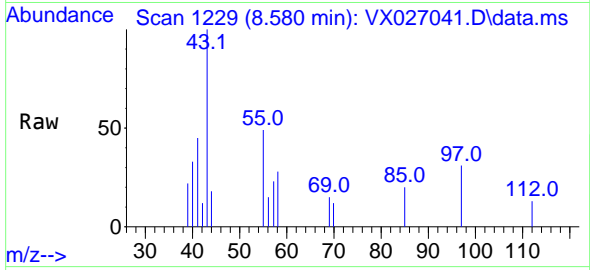




#51
 4-Methyl-2-Pentanone
 Concen: 0.305 ug/l
 RT: 8.580 min Scan# 11
 Delta R.T. 0.006 min
 Lab File: VX027041.D
 Acq: 15 Feb 2022 20:02

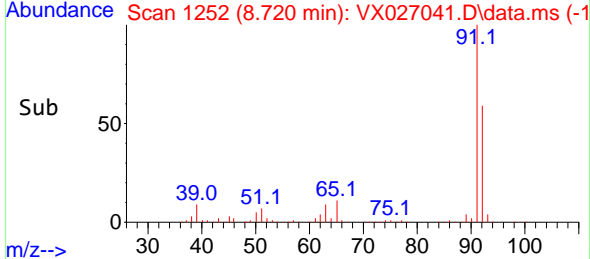
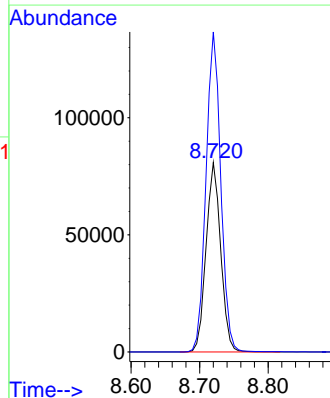
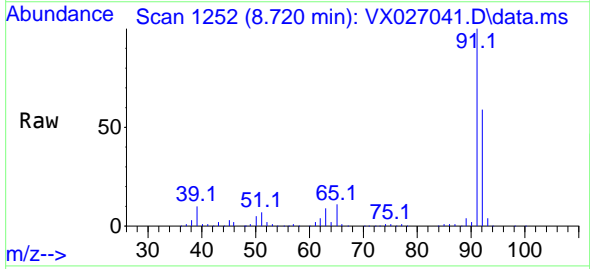
Instrument :
 MSVOA_X
 ClientSampleId :
 MW-11

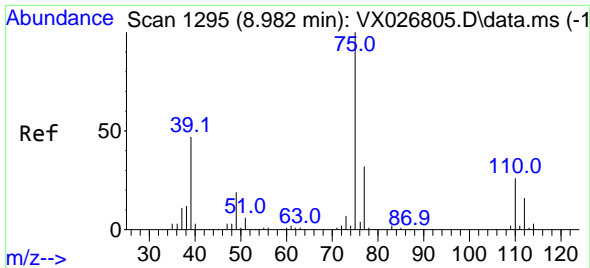
Tgt Ion: 43 Resp: 579
 Ion Ratio Lower Upper
 43 100
 58 35.2 30.5 45.7



#52
 Toluene
 Concen: 36.456 ug/l
 RT: 8.720 min Scan# 1252
 Delta R.T. 0.000 min
 Lab File: VX027041.D
 Acq: 15 Feb 2022 20:02

Tgt Ion: 92 Resp: 120387
 Ion Ratio Lower Upper
 92 100
 91 170.1 135.7 203.5

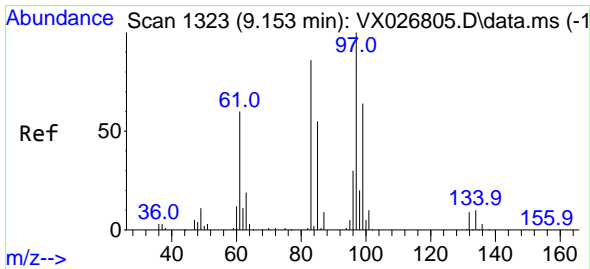
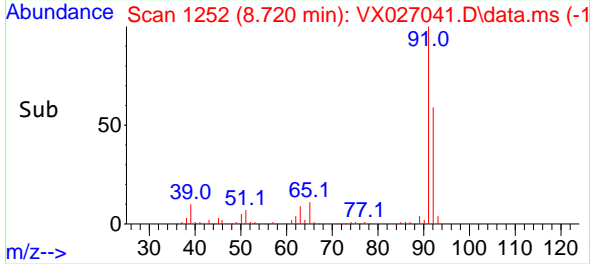
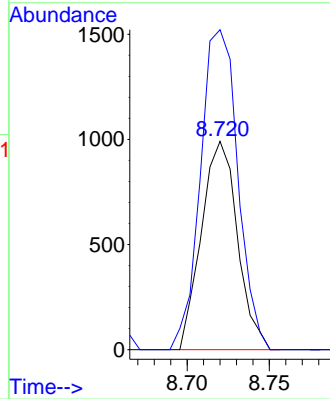
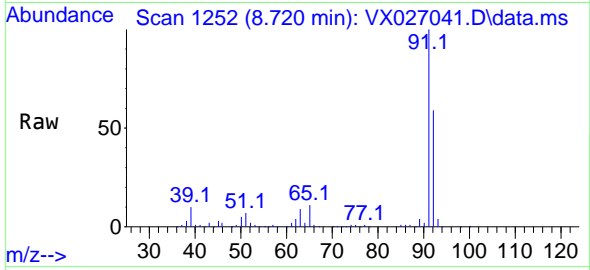




#53
 t-1,3-Dichloropropene
 Concen: 2.126 ug/l
 RT: 8.720 min Scan# 1111
 Delta R.T. -0.262 min
 Lab File: VX027041.D
 Acq: 15 Feb 2022 20:02

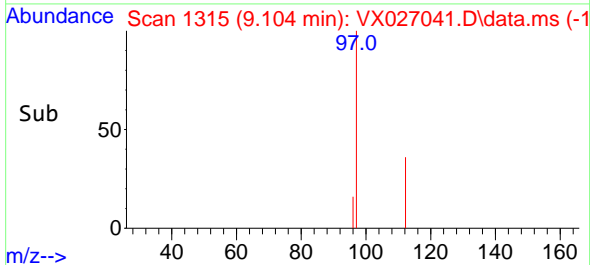
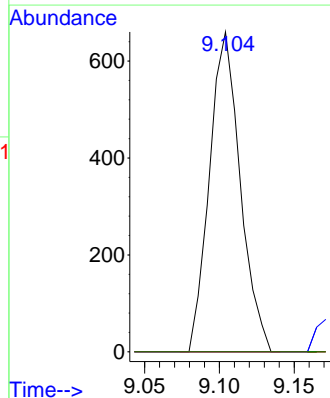
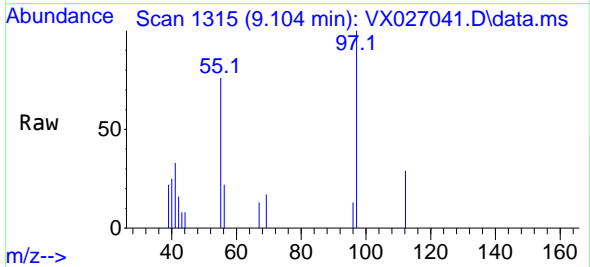
Instrument : MSVOA_X
 ClientSampleId : MW-11

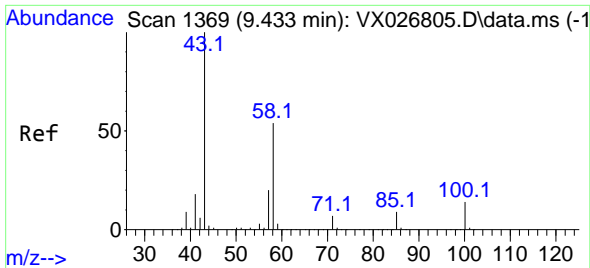
Tgt Ion: 75 Resp: 1510
 Ion Ratio Lower Upper
 75 100
 77 153.6 25.7 38.5#



#55
 1,1,2-Trichloroethane
 Concen: 0.756 ug/l
 RT: 9.104 min Scan# 1315
 Delta R.T. -0.049 min
 Lab File: VX027041.D
 Acq: 15 Feb 2022 20:02

Tgt Ion: 97 Resp: 945
 Ion Ratio Lower Upper
 97 100
 83 0.0 68.4 102.6#
 85 0.0 44.0 66.0#
 99 0.0 49.8 74.6#

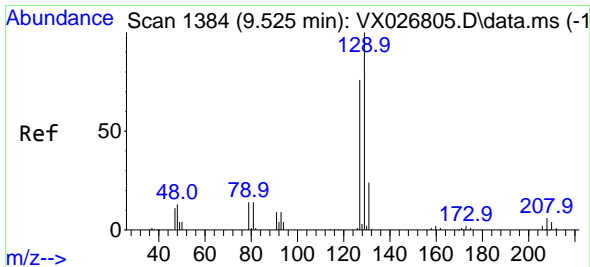
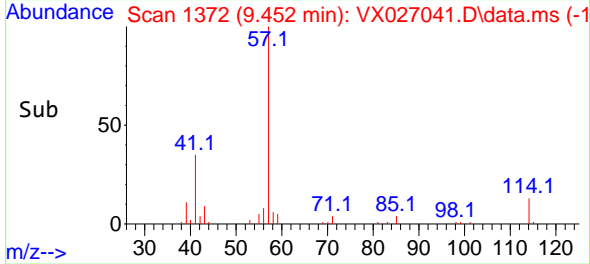
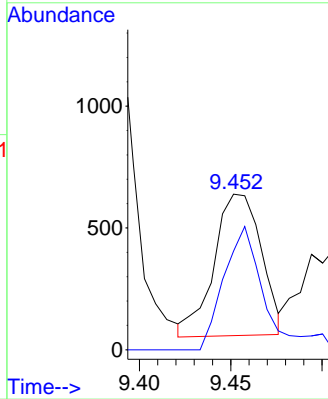
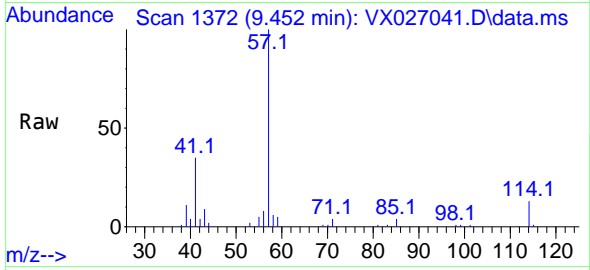




#59
 2-Hexanone
 Concen: 0.756 ug/l
 RT: 9.452 min Scan# 11
 Delta R.T. 0.018 min
 Lab File: VX027041.D
 Acq: 15 Feb 2022 20:02

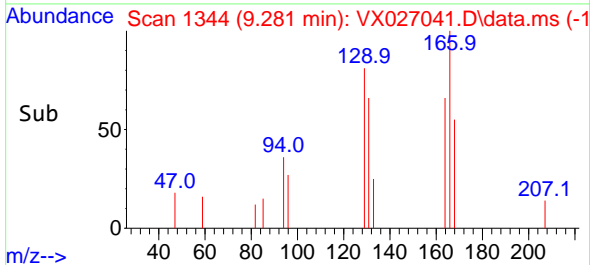
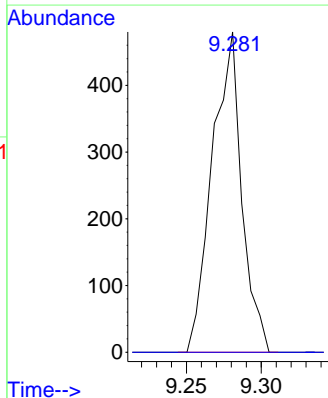
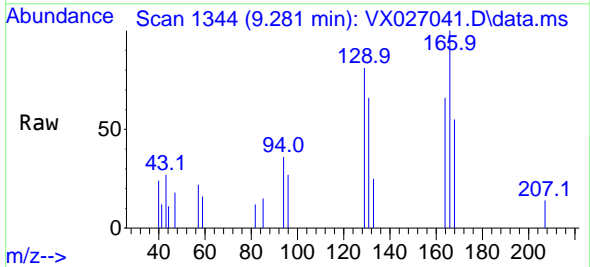
Instrument :
 MSVOA_X
 ClientSampleId :
 MW-11

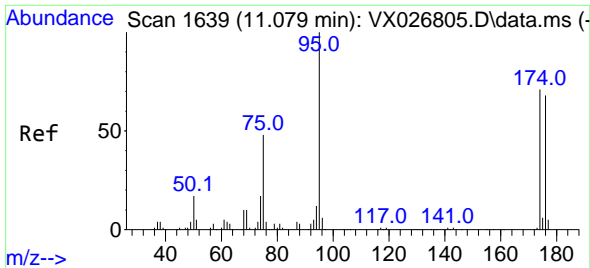
Tgt Ion: 43 Resp: 1049
 Ion Ratio Lower Upper
 43 100
 58 74.7 26.4 79.2



#60
 Dibromochloromethane
 Concen: 0.512 ug/l
 RT: 9.281 min Scan# 1344
 Delta R.T. -0.244 min
 Lab File: VX027041.D
 Acq: 15 Feb 2022 20:02

Tgt Ion: 129 Resp: 658
 Ion Ratio Lower Upper
 129 100
 127 0.0 38.5 115.5#



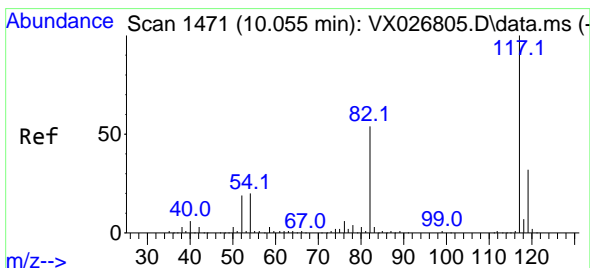
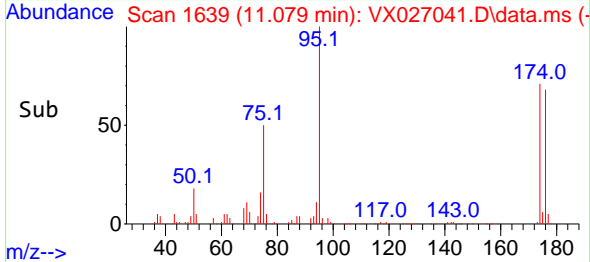
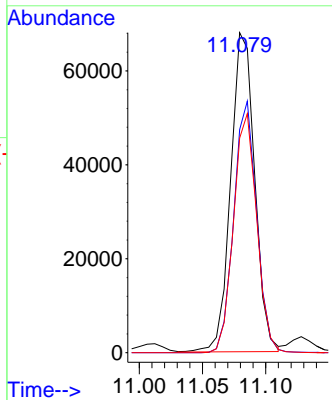
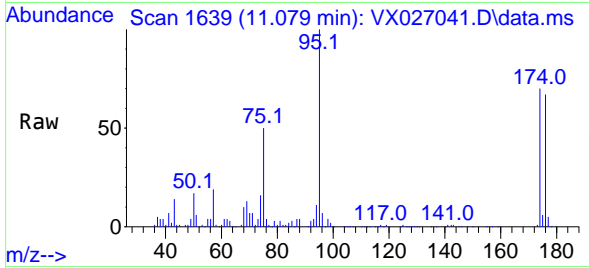


#62
 4-Bromofluorobenzene
 Concen: 61.073 ug/l
 RT: 11.079 min Scan# 1639
 Delta R.T. 0.000 min
 Lab File: VX027041.D
 Acq: 15 Feb 2022 20:02

Instrument : MSVOA_X
 ClientSampleId : MW-11

Tgt Ion: 95 Resp: 89536

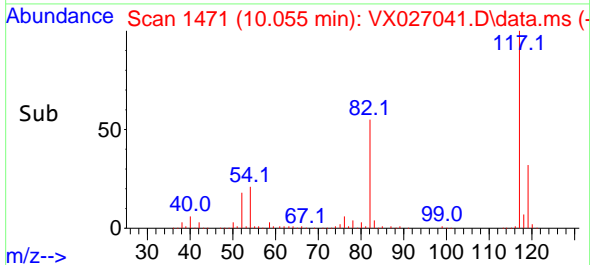
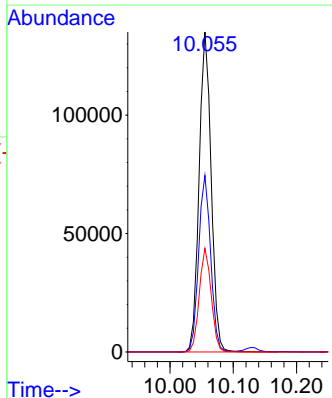
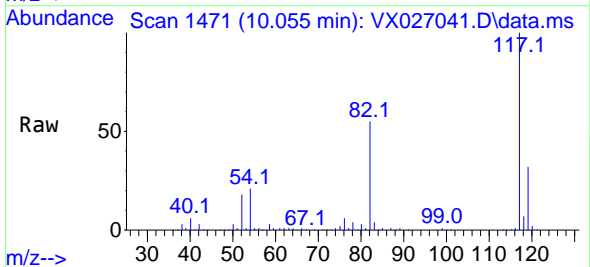
Ion	Ratio	Lower	Upper
95	100		
174	75.2	0.0	148.6
176	72.7	0.0	141.4

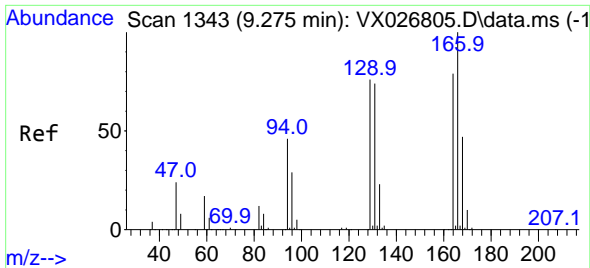


#63
 Chlorobenzene-d5
 Concen: 50.000 ug/l
 RT: 10.055 min Scan# 1471
 Delta R.T. 0.000 min
 Lab File: VX027041.D
 Acq: 15 Feb 2022 20:02

Tgt Ion: 117 Resp: 179281

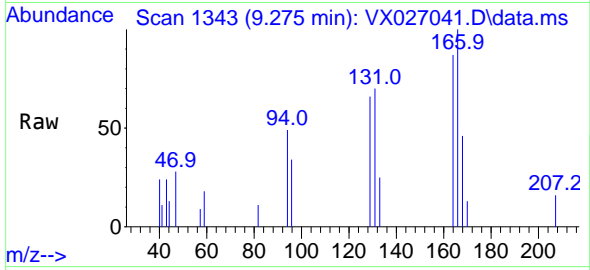
Ion	Ratio	Lower	Upper
117	100		
82	55.2	45.2	67.8
119	32.4	26.2	39.2



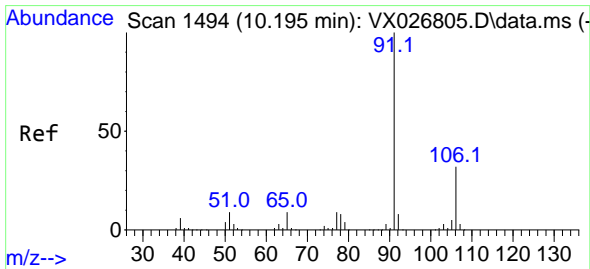
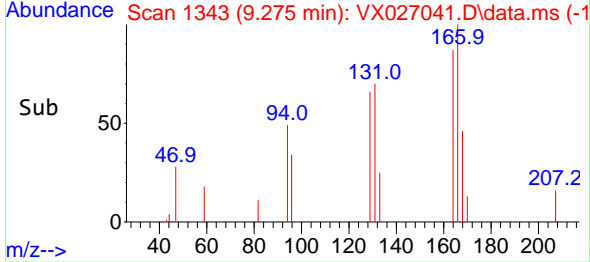
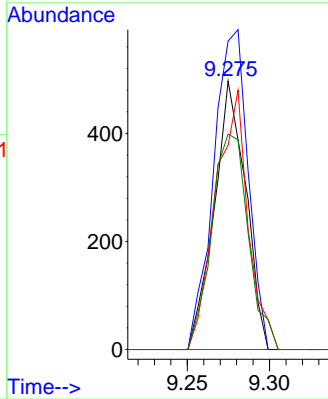


#64
 Tetrachloroethene
 Concen: 0.369 ug/l
 RT: 9.275 min Scan# 11
 Delta R.T. 0.000 min
 Lab File: VX027041.D
 Acq: 15 Feb 2022 20:02

Instrument :
 MSVOA_X
 ClientSampleId :
 MW-11

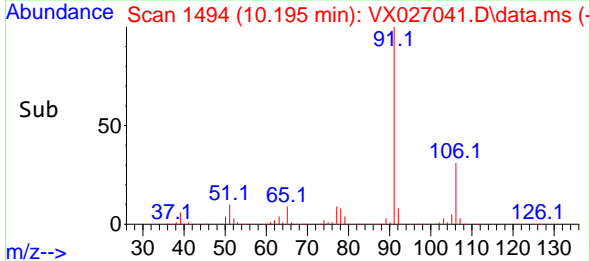
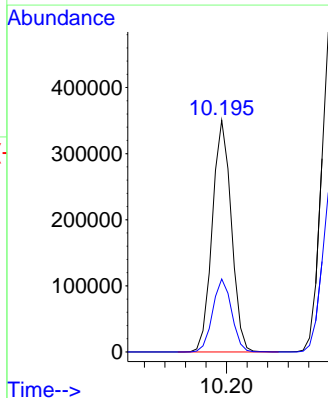
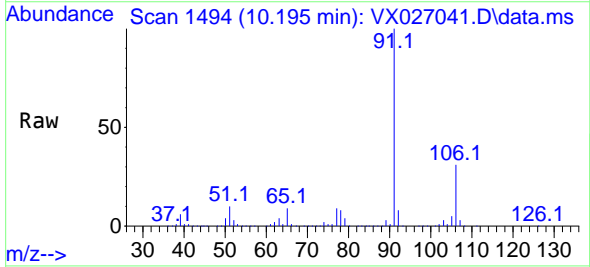


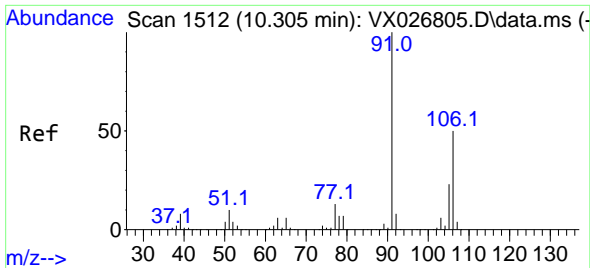
Tgt Ion:164 Resp: 664
 Ion Ratio Lower Upper
 164 100
 166 114.9 101.8 152.6
 129 76.1 83.3 124.9#
 131 80.3 78.0 117.0



#67
 Ethyl Benzene
 Concen: 68.739 ug/l
 RT: 10.195 min Scan# 1494
 Delta R.T. 0.000 min
 Lab File: VX027041.D
 Acq: 15 Feb 2022 20:02

Tgt Ion: 91 Resp: 451082
 Ion Ratio Lower Upper
 91 100
 106 31.5 24.7 37.1

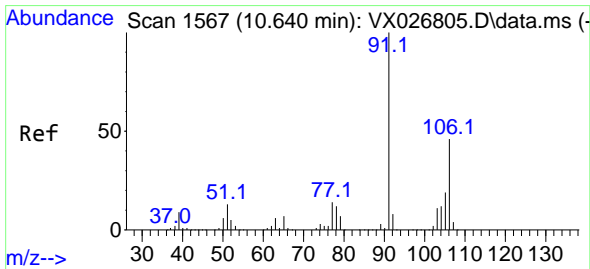
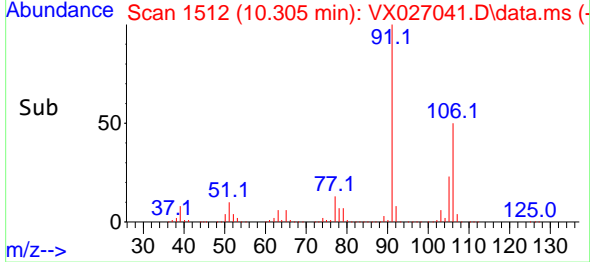
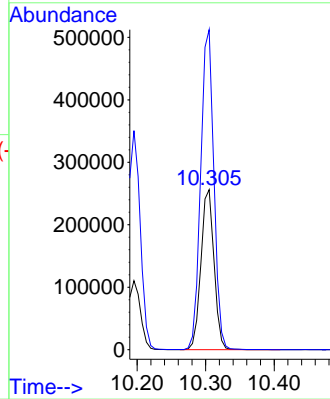
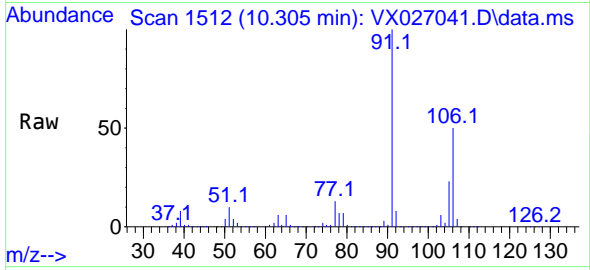




#68
 m/p-Xylenes
 Concen: 135.056 ug/l
 RT: 10.305 min Scan# 1512
 Delta R.T. 0.000 min
 Lab File: VX027041.D
 Acq: 15 Feb 2022 20:02

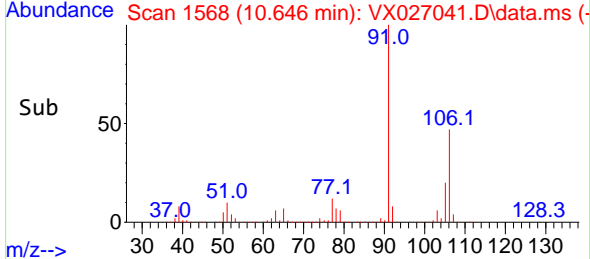
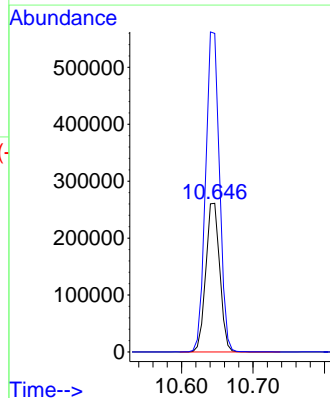
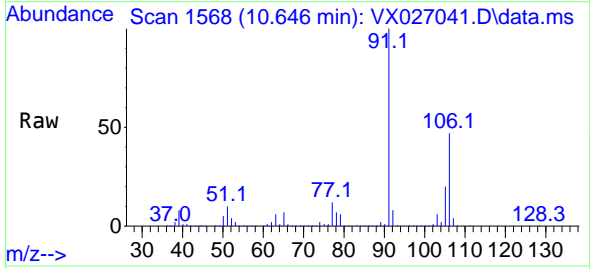
Instrument :
 MSVOA_X
 ClientSampleId :
 MW-11

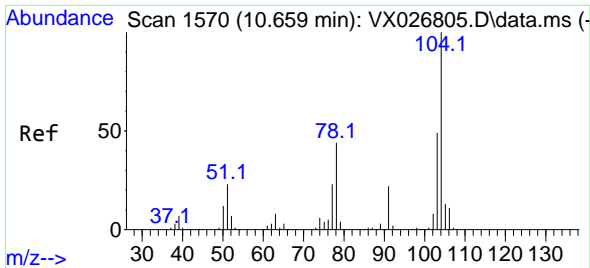
Tgt Ion:106 Resp: 340988
 Ion Ratio Lower Upper
 106 100
 91 201.6 165.3 247.9



#69
 o-Xylene
 Concen: 143.103 ug/l
 RT: 10.646 min Scan# 1568
 Delta R.T. 0.006 min
 Lab File: VX027041.D
 Acq: 15 Feb 2022 20:02

Tgt Ion:106 Resp: 354032
 Ion Ratio Lower Upper
 106 100
 91 214.7 109.7 329.0

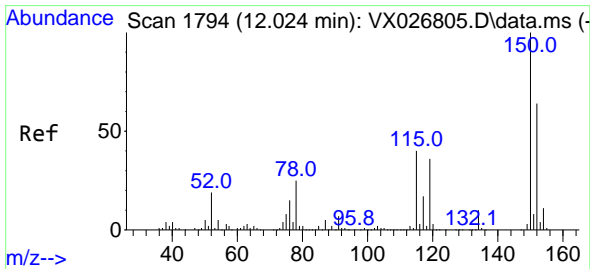
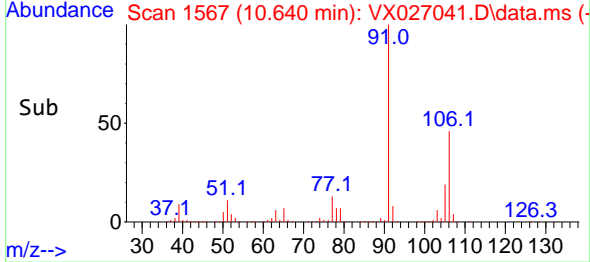
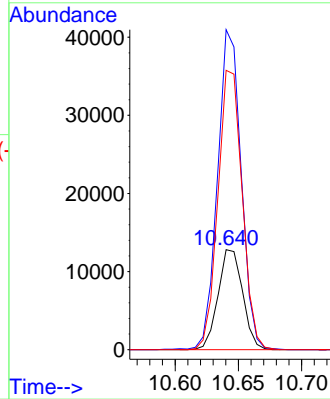
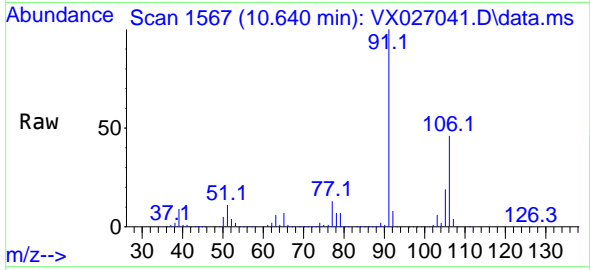




#70
 Styrene
 Concen: 4.313 ug/l
 RT: 10.640 min Scan# 11
 Delta R.T. -0.018 min
 Lab File: VX027041.D
 Acq: 15 Feb 2022 20:02

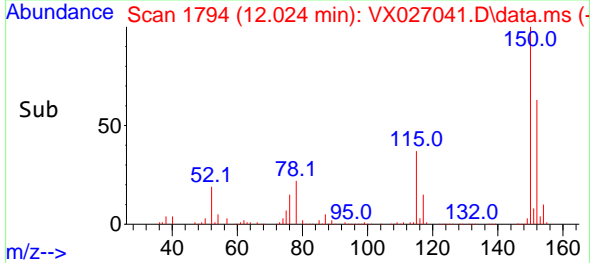
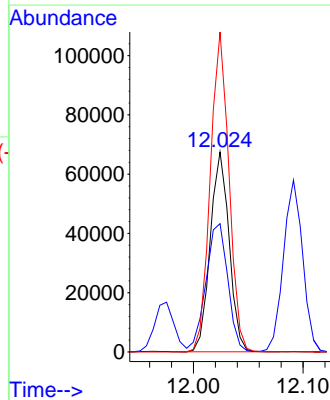
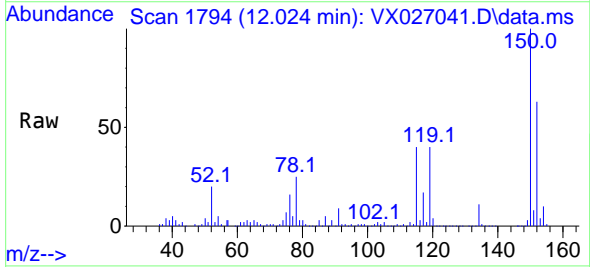
Instrument : MSVOA_X
 ClientSampleId : MW-11

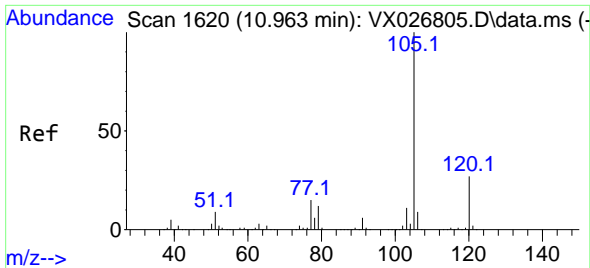
Tgt Ion:104 Resp: 17307
 Ion Ratio Lower Upper
 104 100
 78 307.0 42.5 63.7#
 103 275.2 43.3 64.9#



#72
 1,4-Dichlorobenzene-d4
 Concen: 50.000 ug/l
 RT: 12.024 min Scan# 1794
 Delta R.T. 0.000 min
 Lab File: VX027041.D
 Acq: 15 Feb 2022 20:02

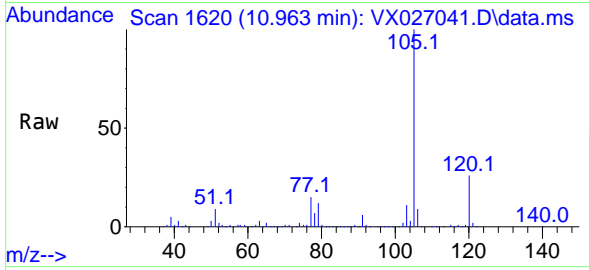
Tgt Ion:152 Resp: 80671
 Ion Ratio Lower Upper
 152 100
 115 74.2 44.2 132.6
 150 158.4 0.0 348.2



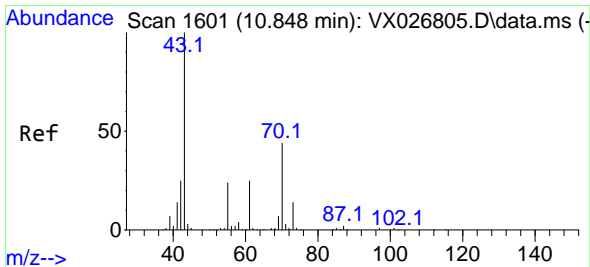
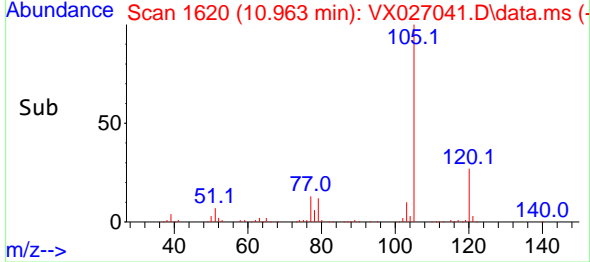
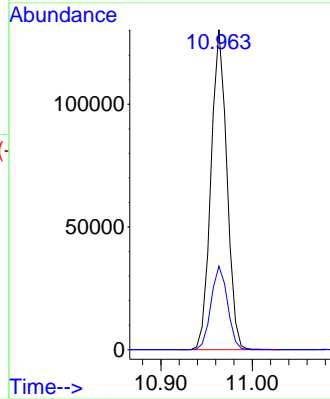


#73
 Isopropylbenzene
 Concen: 24.763 ug/l
 RT: 10.963 min Scan# 1602
 Delta R.T. 0.000 min
 Lab File: VX027041.D
 Acq: 15 Feb 2022 20:02

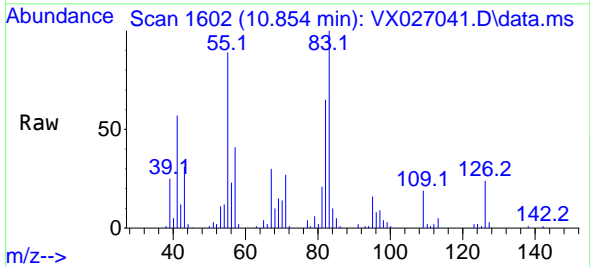
Instrument : MSVOA_X
 ClientSampleId : MW-11



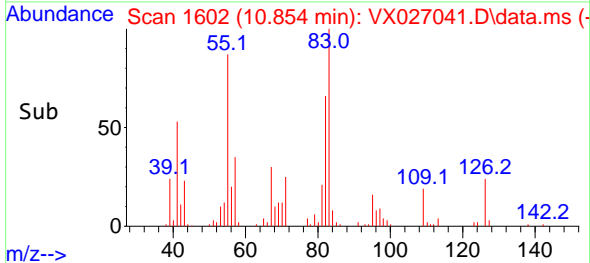
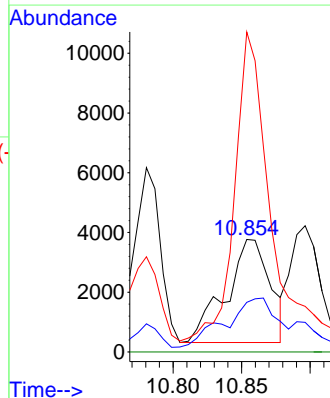
Tgt Ion:105 Resp: 157353
 Ion Ratio Lower Upper
 105 100
 120 26.9 13.1 39.1

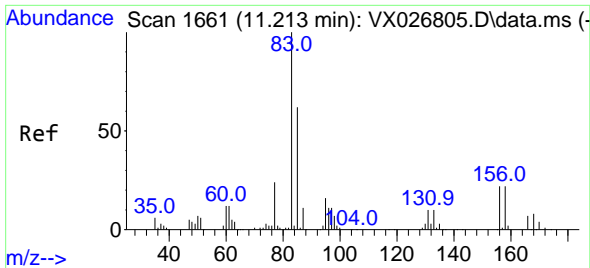


#74
 N-ethyl acetate
 Concen: 3.059 ug/l
 RT: 10.854 min Scan# 1602
 Delta R.T. 0.006 min
 Lab File: VX027041.D
 Acq: 15 Feb 2022 20:02



Tgt Ion: 43 Resp: 7767
 Ion Ratio Lower Upper
 43 100
 70 54.7 32.9 49.3#
 55 237.3 18.3 27.5#
 61 0.0 18.9 28.3#

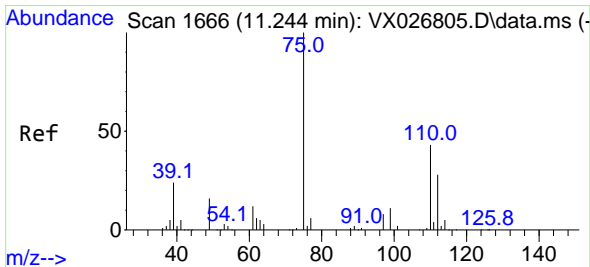
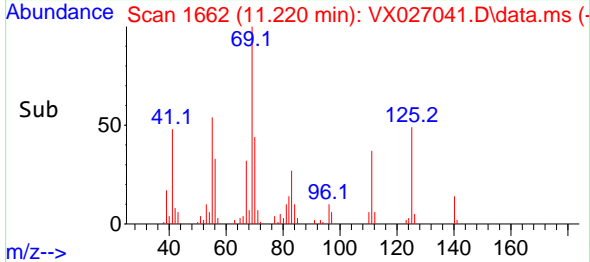
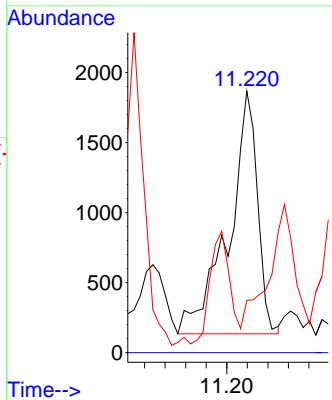
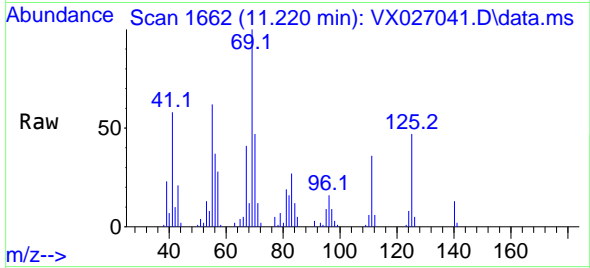




#75
 1,1,2,2-Tetrachloroethane
 Concen: 1.962 ug/l
 RT: 11.220 min Scan# 1662
 Delta R.T. 0.006 min
 Lab File: VX027041.D
 Acq: 15 Feb 2022 20:02

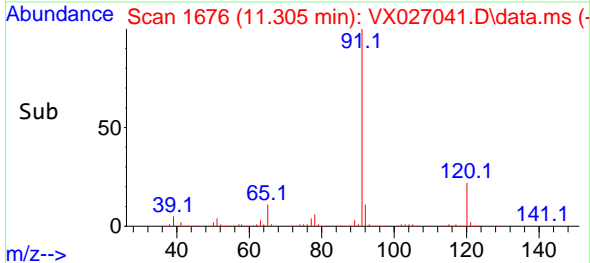
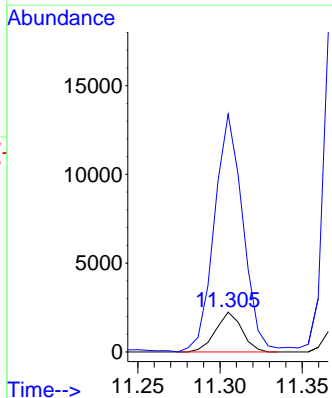
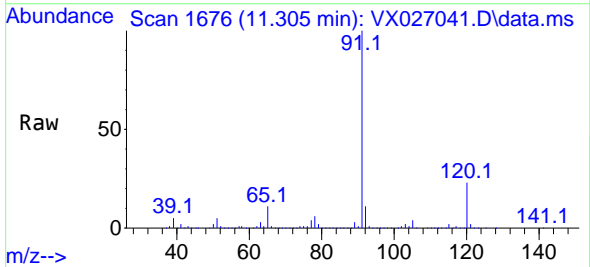
Instrument : MSVOA_X
 ClientSampleId : MW-11

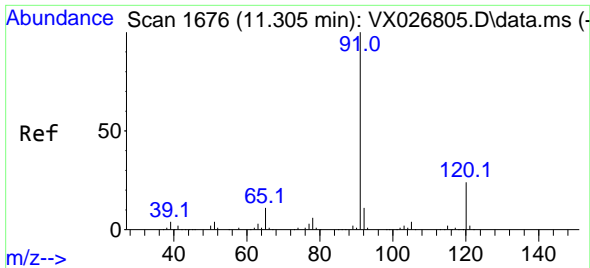
Tgt Ion: 83 Resp: 3383
 Ion Ratio Lower Upper
 83 100
 131 0.0 5.3 15.9#
 85 0.0 32.0 96.2#



#76
 1,2,3-Trichloropropane
 Concen: 1.409 ug/l
 RT: 11.305 min Scan# 1676
 Delta R.T. 0.061 min
 Lab File: VX027041.D
 Acq: 15 Feb 2022 20:02

Tgt Ion: 75 Resp: 2488
 Ion Ratio Lower Upper
 75 100
 77 651.3 18.3 54.8#

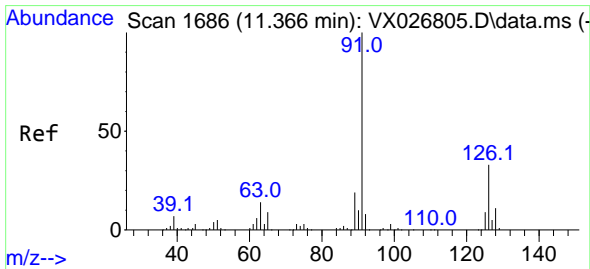
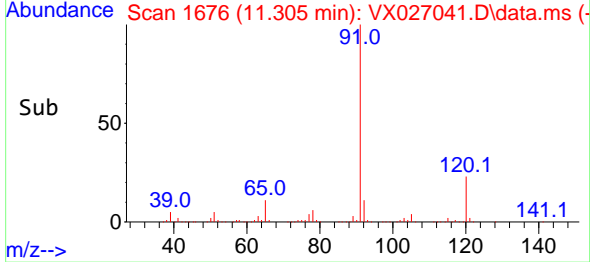
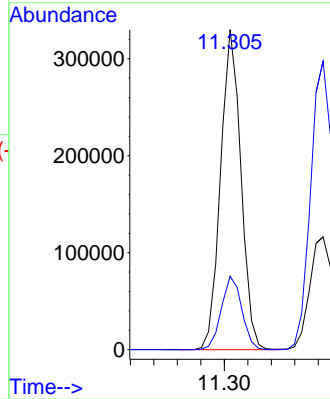
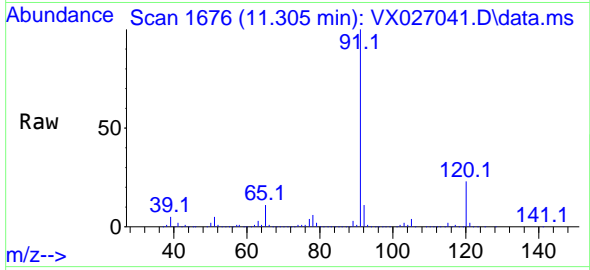




#78
 n-propylbenzene
 Concen: 56.435 ug/l
 RT: 11.305 min Scan# 1676
 Delta R.T. 0.000 min
 Lab File: VX027041.D
 Acq: 15 Feb 2022 20:02

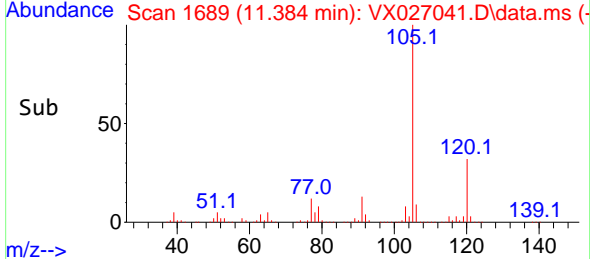
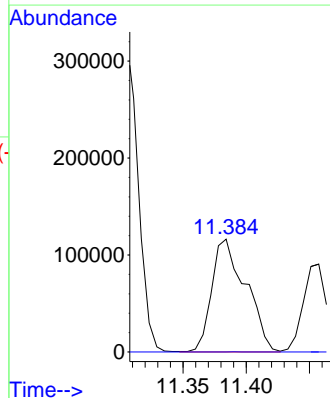
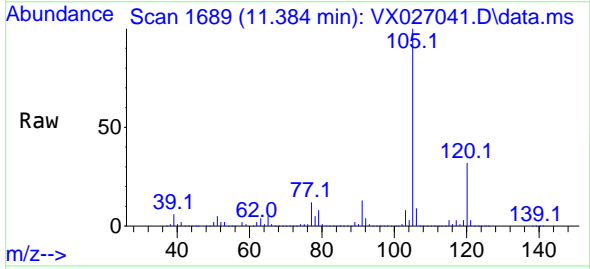
Instrument : MSVOA_X
 ClientSampleId : MW-11

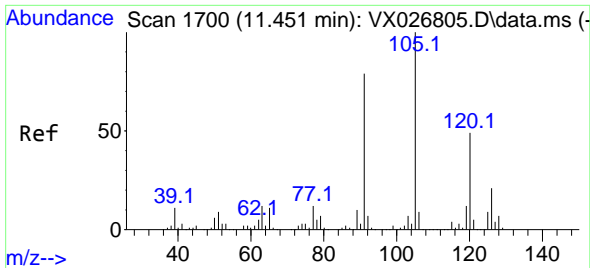
Tgt Ion: 91 Resp: 397549
 Ion Ratio Lower Upper
 91 100
 120 23.0 11.6 34.7



#79
 2-Chlorotoluene
 Concen: 50.120 ug/l
 RT: 11.384 min Scan# 1689
 Delta R.T. 0.018 min
 Lab File: VX027041.D
 Acq: 15 Feb 2022 20:02

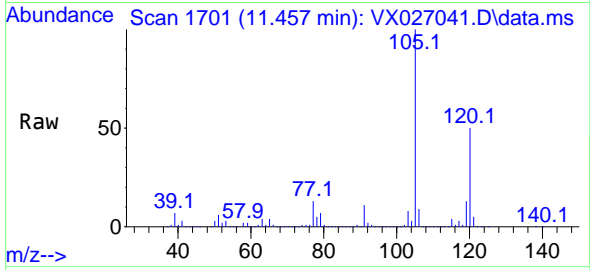
Tgt Ion: 91 Resp: 218150
 Ion Ratio Lower Upper
 91 100
 126 0.1 16.4 49.2#



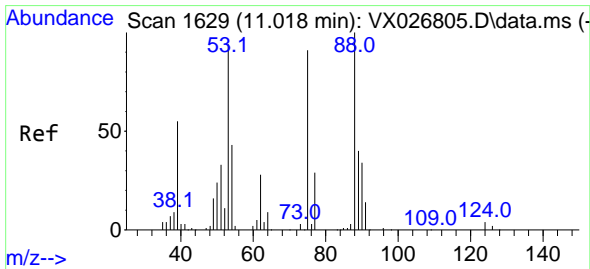
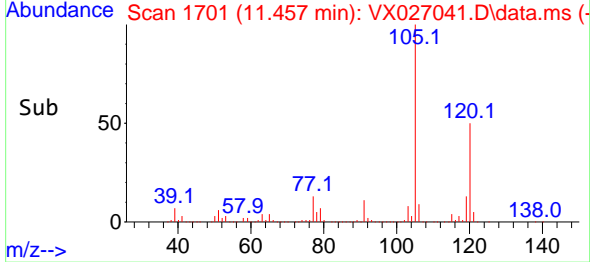
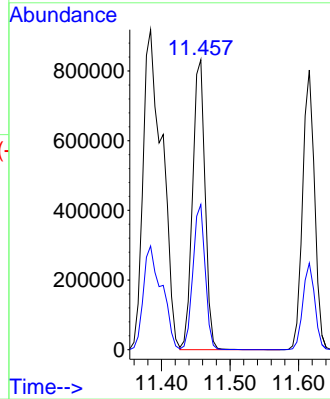


#80
 1,3,5-Trimethylbenzene
 Concen: 200.936 ug/l
 RT: 11.457 min Scan# 11
 Delta R.T. 0.006 min
 Lab File: VX027041.D
 Acq: 15 Feb 2022 20:02

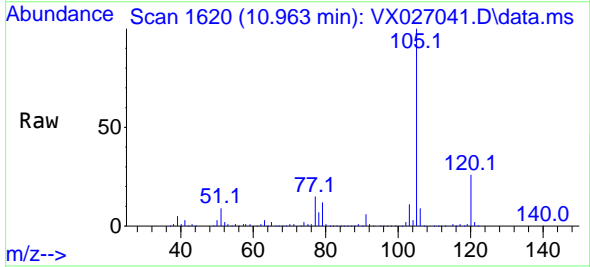
Instrument :
 MSVOA_X
 ClientSampleId :
 MW-11



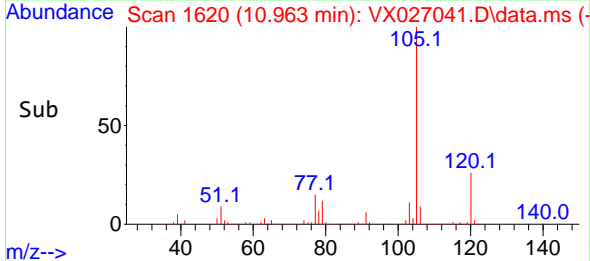
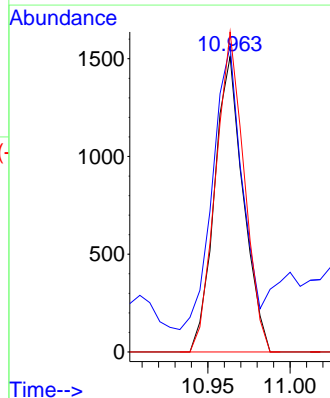
Tgt Ion:105 Resp: 1050842
 Ion Ratio Lower Upper
 105 100
 120 49.2 24.0 72.0

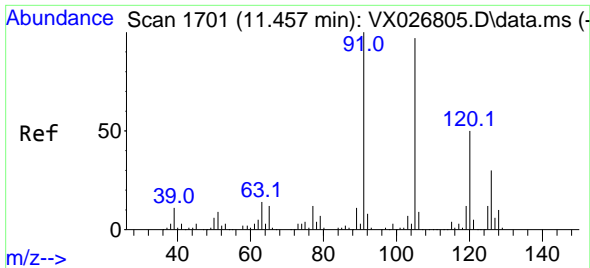


#81
 trans-1,4-Dichloro-2-butene
 Concen: 6.431 ug/l
 RT: 10.963 min Scan# 1620
 Delta R.T. -0.055 min
 Lab File: VX027041.D
 Acq: 15 Feb 2022 20:02



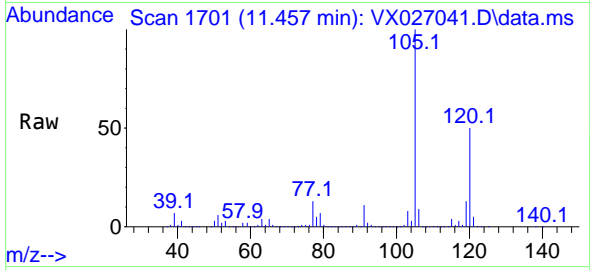
Tgt Ion: 75 Resp: 1841
 Ion Ratio Lower Upper
 75 100
 53 97.2 94.0 141.0
 89 106.8 37.0 55.4#



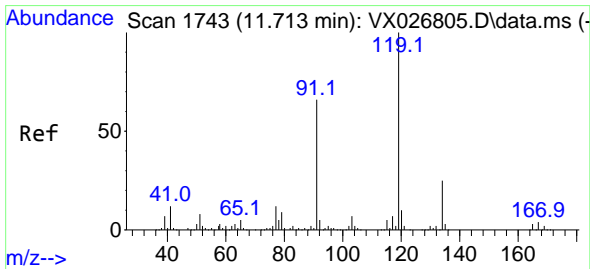
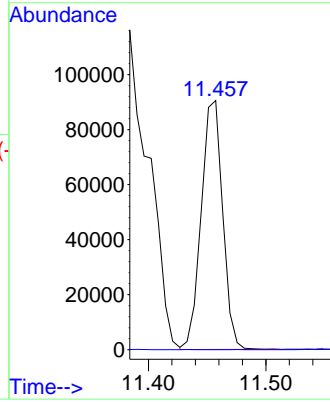
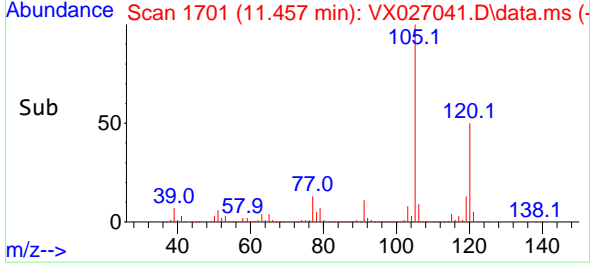


#82
 4-Chlorotoluene
 Concen: 23.492 ug/l
 RT: 11.457 min Scan# 11
 Delta R.T. 0.000 min
 Lab File: VX027041.D
 Acq: 15 Feb 2022 20:02

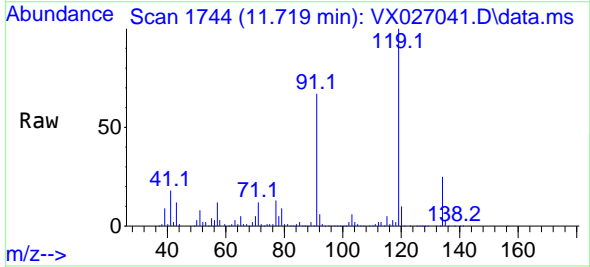
Instrument :
 MSVOA_X
 ClientSampleId :
 MW-11



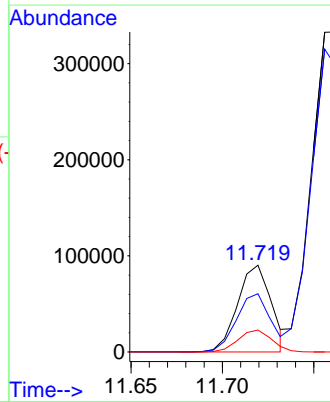
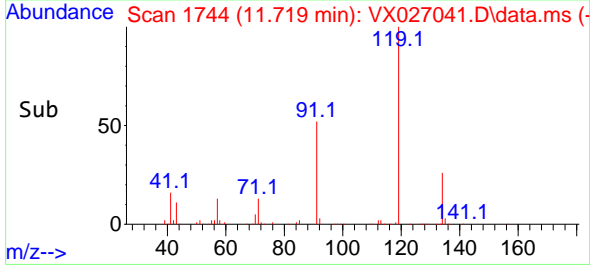
Tgt Ion: 91 Resp: 114709
 Ion Ratio Lower Upper
 91 100
 126 0.0 14.1 42.4#

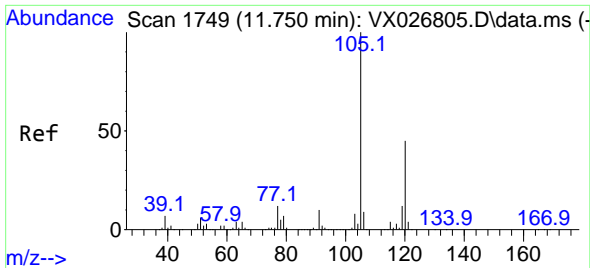


#83
 tert-Butylbenzene
 Concen: 23.038 ug/l
 RT: 11.719 min Scan# 1744
 Delta R.T. 0.006 min
 Lab File: VX027041.D
 Acq: 15 Feb 2022 20:02



Tgt Ion: 119 Resp: 114833
 Ion Ratio Lower Upper
 119 100
 91 68.1 31.4 94.0
 134 25.4 11.8 35.3

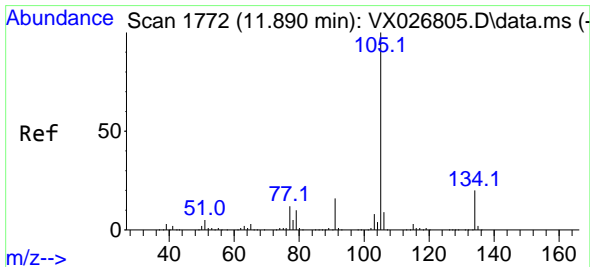
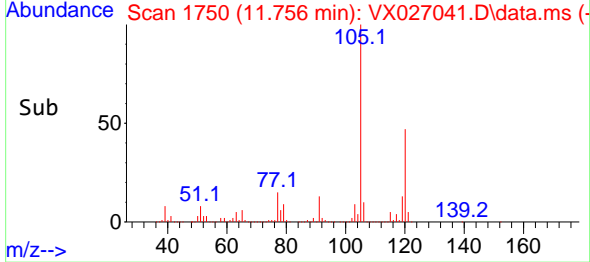
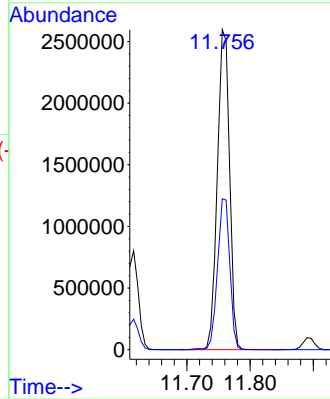
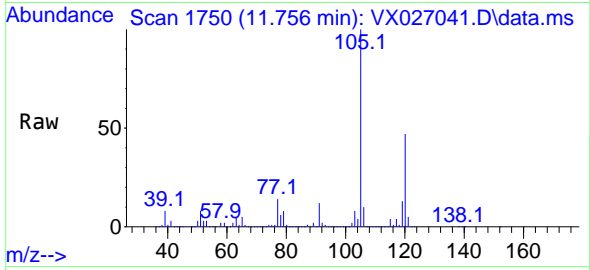




#84
 1,2,4-Trimethylbenzene
 Concen: 657.507 ug/l
 RT: 11.756 min Scan# 1
 Delta R.T. 0.006 min
 Lab File: VX027041.D
 Acq: 15 Feb 2022 20:02

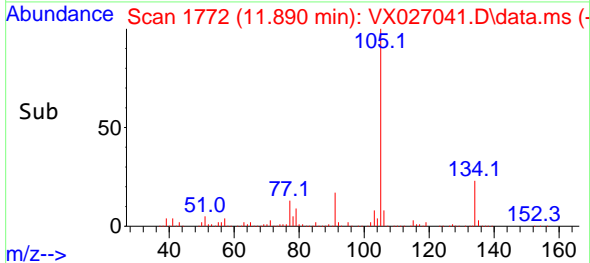
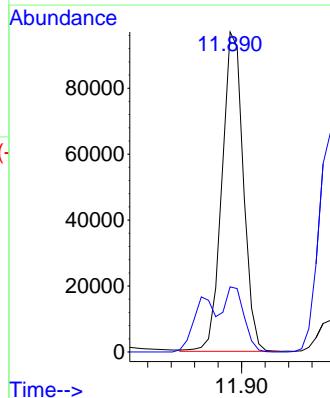
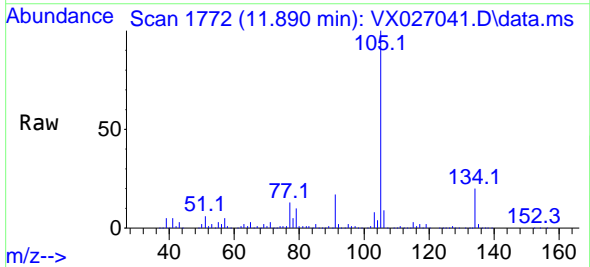
Instrument :
 MSVOA_X
 ClientSampleId :
 MW-11

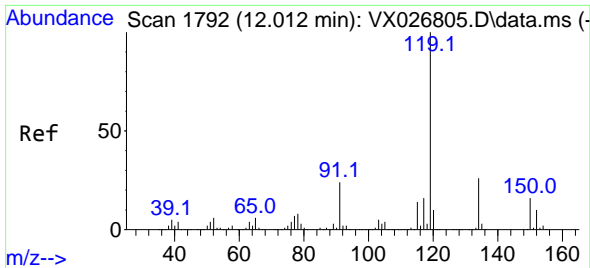
Tgt Ion:105 Resp: 3468363
 Ion Ratio Lower Upper
 105 100
 120 47.5 21.9 65.5



#85
 sec-Butylbenzene
 Concen: 19.347 ug/l
 RT: 11.890 min Scan# 1772
 Delta R.T. 0.000 min
 Lab File: VX027041.D
 Acq: 15 Feb 2022 20:02

Tgt Ion:105 Resp: 122236
 Ion Ratio Lower Upper
 105 100
 134 19.7 10.1 30.1



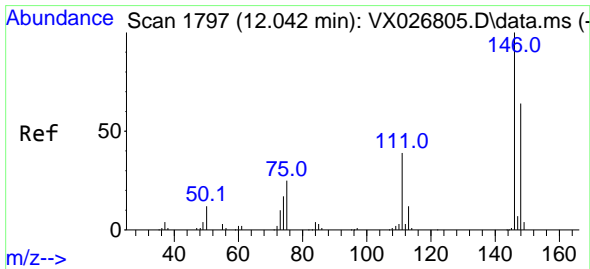
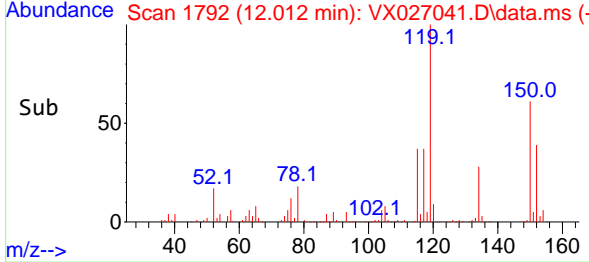
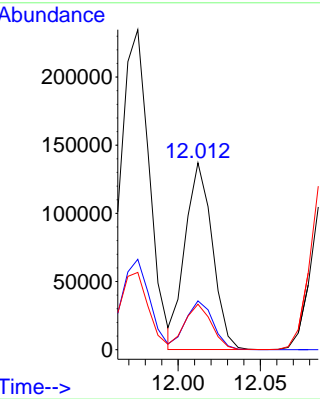
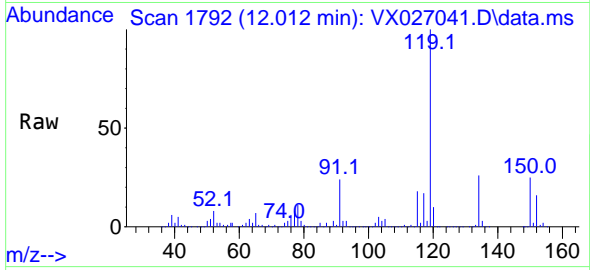


#86
 p-Isopropyltoluene
 Concen: 29.475 ug/l
 RT: 12.012 min Scan# 1792
 Delta R.T. 0.000 min
 Lab File: VX027041.D
 Acq: 15 Feb 2022 20:02

Instrument : MSVOA_X
 ClientSampleId : MW-11

Tgt Ion:119 Resp: 157768

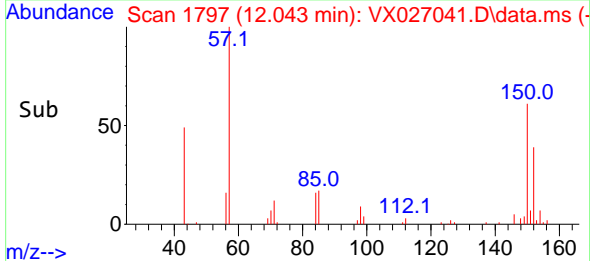
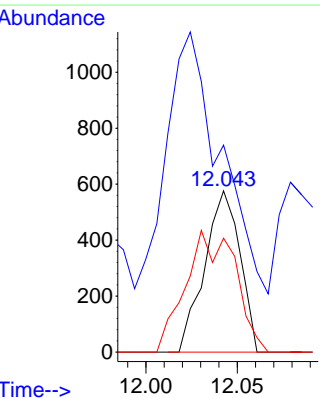
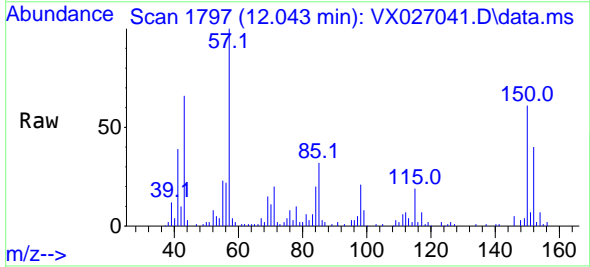
Ion	Ratio	Lower	Upper
119	100		
134	26.5	13.0	39.0
91	24.0	12.6	37.6

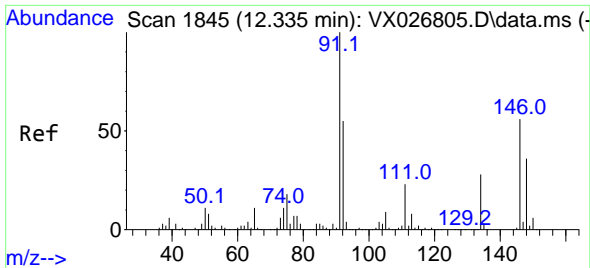


#88
 1,4-Dichlorobenzene
 Concen: 0.277 ug/l
 RT: 12.043 min Scan# 1797
 Delta R.T. 0.000 min
 Lab File: VX027041.D
 Acq: 15 Feb 2022 20:02

Tgt Ion:146 Resp: 773

Ion	Ratio	Lower	Upper
146	100		
111	260.5	20.2	60.6#
148	106.6	31.4	94.0#

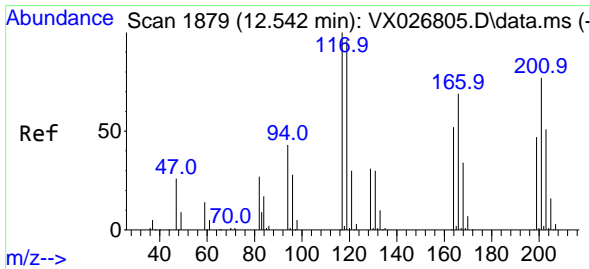
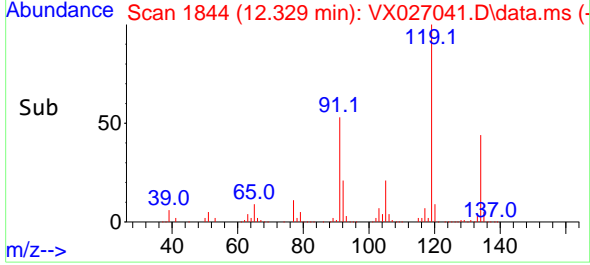
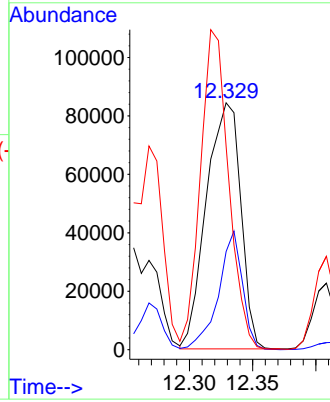
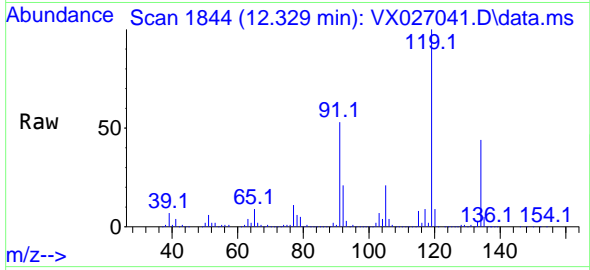




#89
 n-Butylbenzene
 Concen: 36.314 ug/l
 RT: 12.329 min Scan# 1844
 Delta R.T. -0.006 min
 Lab File: VX027041.D
 Acq: 15 Feb 2022 20:02

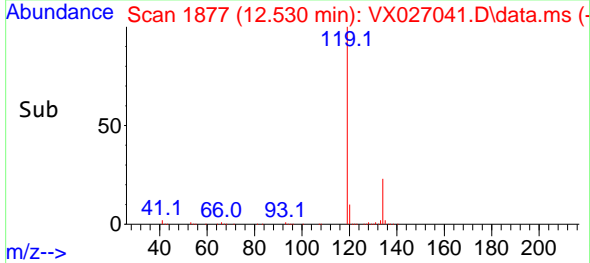
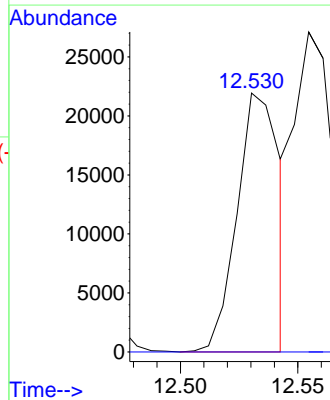
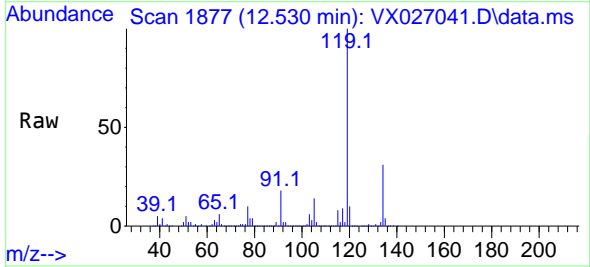
Instrument : MSVOA_X
 ClientSampleId : MW-11

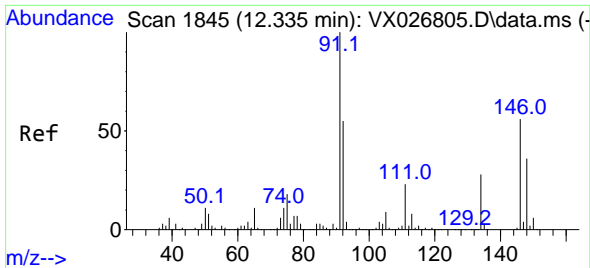
Tgt Ion: 91 Resp: 159032
 Ion Ratio Lower Upper
 91 100
 92 33.7 27.2 81.6
 134 106.5 13.1 39.1#



#90
 Hexachloroethane
 Concen: 35.654 ug/l
 RT: 12.530 min Scan# 1877
 Delta R.T. -0.012 min
 Lab File: VX027041.D
 Acq: 15 Feb 2022 20:02

Tgt Ion: 117 Resp: 27583
 Ion Ratio Lower Upper
 117 100
 201 0.0 35.6 106.8#



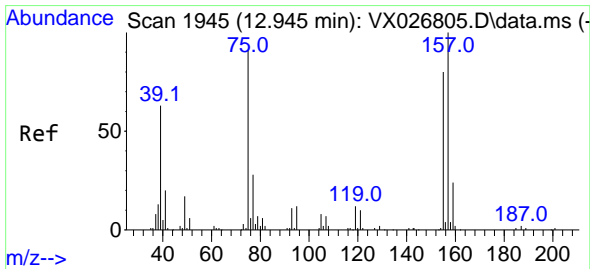
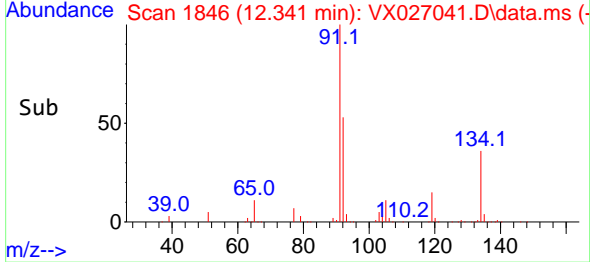
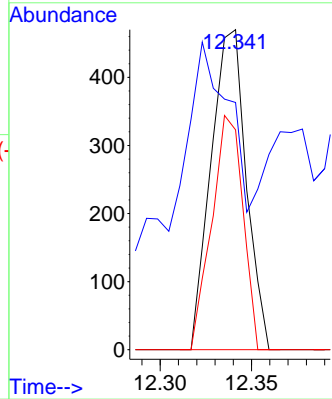
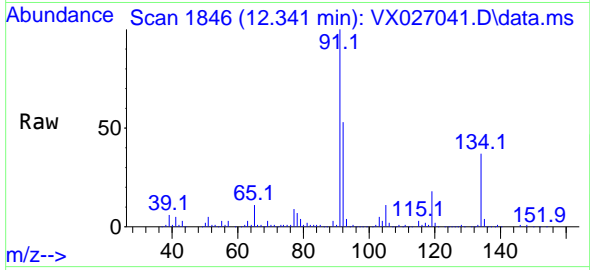


#91
 1,2-Dichlorobenzene
 Concen: 0.236 ug/l
 RT: 12.341 min Scan# 11
 Delta R.T. 0.006 min
 Lab File: VX027041.D
 Acq: 15 Feb 2022 20:02

Instrument :
 MSVOA_X
 ClientSampleId :
 MW-11

Tgt Ion:146 Resp: 631

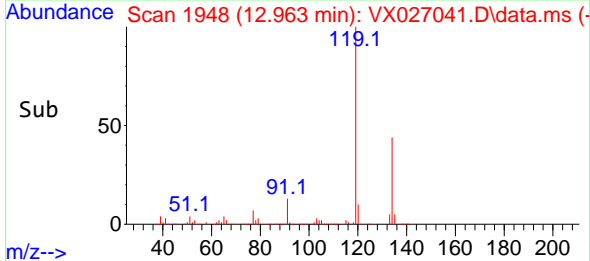
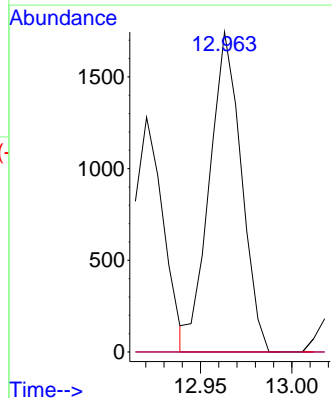
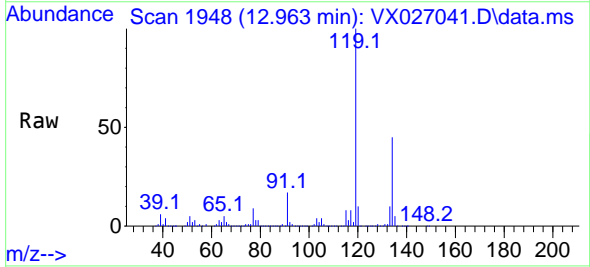
Ion	Ratio	Lower	Upper
146	100		
111	57.2	21.8	65.3
148	64.8	32.0	96.2

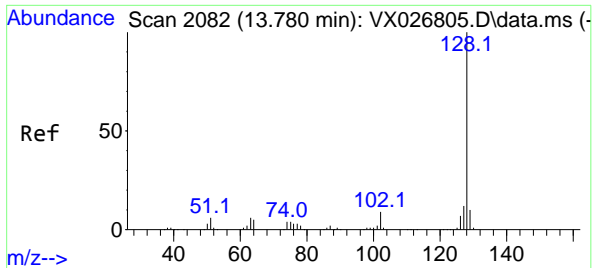


#92
 1,2-Dibromo-3-Chloropropane
 Concen: 4.997 ug/l
 RT: 12.963 min Scan# 1948
 Delta R.T. 0.018 min
 Lab File: VX027041.D
 Acq: 15 Feb 2022 20:02

Tgt Ion: 75 Resp: 2119

Ion	Ratio	Lower	Upper
75	100		
155	0.0	40.0	119.9#
157	0.0	51.6	154.8#





#95
 Naphthalene
 Concen: 84.598 ug/l
 RT: 13.774 min Scan# 20
 Delta R.T. -0.006 min
 Lab File: VX027041.D
 Acq: 15 Feb 2022 20:02

Instrument : MSVOA_X
 ClientSampleId : MW-11

Tgt Ion:128 Resp: 499427

Ion	Ratio	Lower	Upper
128	100		
127	13.0	10.3	15.5
129	11.0	8.7	13.1

