

Data Path : Z:\voasrv\HPCHEM1\MSVOA_X\Data\VX021724\
 Data File : VX040307.D
 Acq On : 17 Feb 2024 17:03
 Operator : JC/MD
 Sample : P1506-04
 Misc : 5.0mL/MSVOA_X/WATER
 ALS Vial : 18 Sample Multiplier: 1

Instrument :
 MSVOA_X
 ClientSampleId :
 BP-VPB-195-EB-20240215

Quant Time: Feb 19 03:59:21 2024
 Quant Method : Z:\voasrv\HPCHEM1\MSVOA_X\Method\82X020924W.M
 Quant Title : SW846 8260
 QLast Update : Mon Feb 12 00:21:14 2024
 Response via : Initial Calibration

Compound	R.T.	QIon	Response	Conc	Units	Dev(Min)

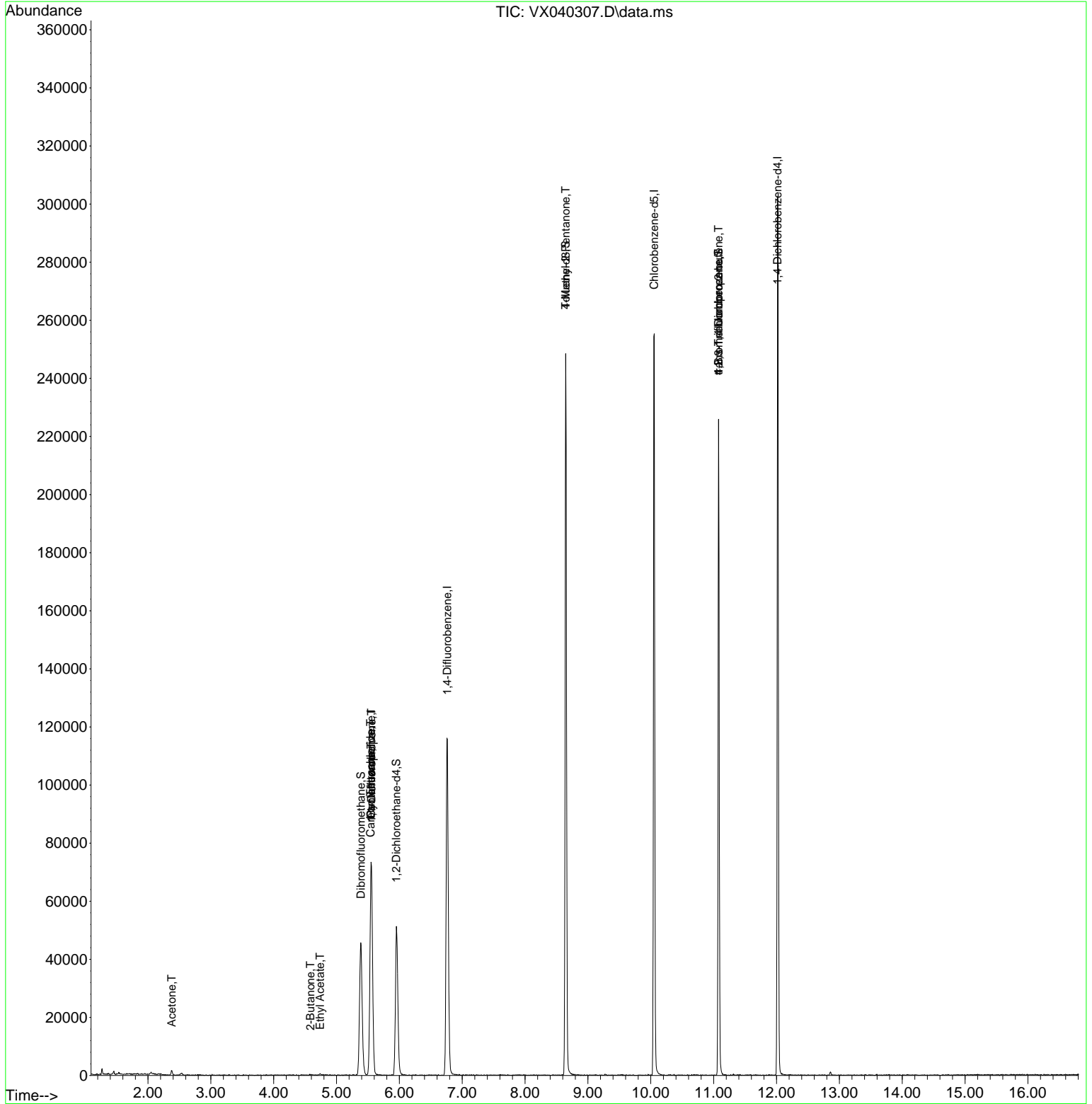
Internal Standards						
1) Pentafluorobenzene	5.550	168	71665	50.000	ug/l	# 0.00
34) 1,4-Difluorobenzene	6.763	114	118990	50.000	ug/l	0.00
63) Chlorobenzene-d5	10.055	117	116985	50.000	ug/l	0.00
72) 1,4-Dichlorobenzene-d4	12.018	152	62350	50.000	ug/l	0.00
System Monitoring Compounds						
33) 1,2-Dichloroethane-d4	5.952	65	48651	45.632	ug/l	0.00
Spiked Amount	50.000	Range	78 - 117	Recovery	=	91.260%
35) Dibromofluoromethane	5.385	113	39986	48.120	ug/l	0.00
Spiked Amount	50.000	Range	75 - 124	Recovery	=	96.240%
50) Toluene-d8	8.647	98	144526	46.496	ug/l	0.00
Spiked Amount	50.000	Range	92 - 112	Recovery	=	93.000%
62) 4-Bromofluorobenzene	11.079	95	58253	45.951	ug/l	0.00
Spiked Amount	50.000	Range	83 - 123	Recovery	=	91.900%
Target Compounds						
						Qvalue
16) Acetone	2.379	43	1524	3.480	ug/l	# 81
25) 2-Butanone	4.586	43	534	0.780	ug/l	# 51
31) Cyclohexane	5.550	56	1580	1.242	ug/l	# 1
36) 1,1-Dichloropropene	5.556	75	5636	4.842	ug/l	# 50
37) Ethyl Acetate	4.739	43	738	0.570	ug/l	# 69
38) Carbon Tetrachloride	5.544	117	7215	6.519	ug/l	# 16
51) 4-Methyl-2-Pentanone	8.647	43	734	0.532	ug/l	# 1
76) 1,2,3-Trichloropropane	11.079	75	30478	24.139	ug/l	# 38
81) trans-1,4-Dichloro-2-b...	11.079	75	30478	66.522	ug/l	# 5

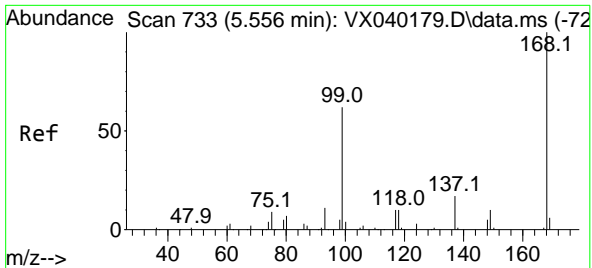
(#) = qualifier out of range (m) = manual integration (+) = signals summed

Data Path : Z:\voasrv\HPCHEM1\MSVOA_X\Data\VX021724\
 Data File : VX040307.D
 Acq On : 17 Feb 2024 17:03
 Operator : JC/MD
 Sample : P1506-04
 Misc : 5.0mL/MSVOA_X/WATER
 ALS Vial : 18 Sample Multiplier: 1

Instrument :
 MSVOA_X
ClientSampleId :
 BP-VPB-195-EB-20240215

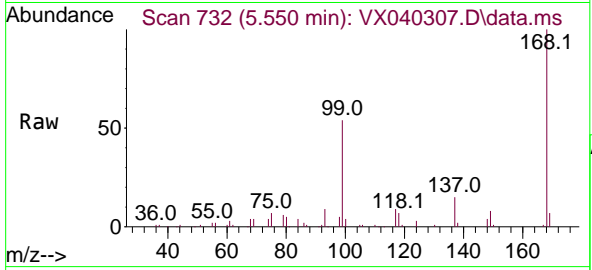
Quant Time: Feb 19 03:59:21 2024
 Quant Method : Z:\voasrv\HPCHEM1\MSVOA_X\Method\82X020924W.M
 Quant Title : SW846 8260
 QLast Update : Mon Feb 12 00:21:14 2024
 Response via : Initial Calibration



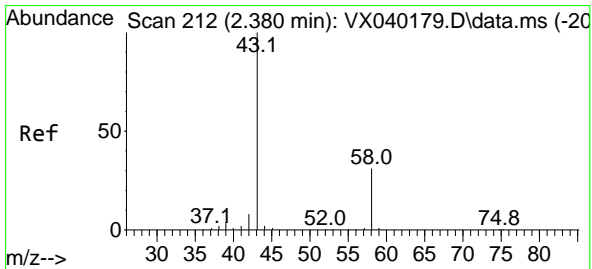
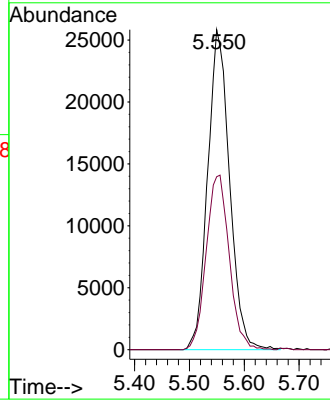
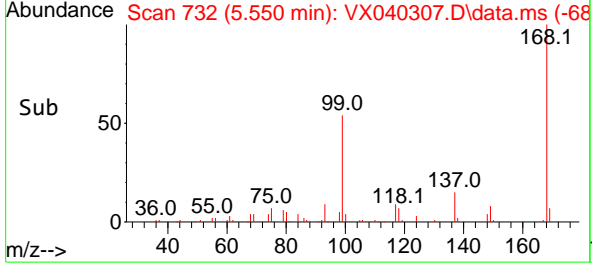


#1
 Pentafluorobenzene
 Concen: 50.000 ug/l
 RT: 5.550 min Scan# 71
 Delta R.T. -0.000 min
 Lab File: VX040307.D
 Acq: 17 Feb 2024 17:03

Instrument : MSVOA_X
 Client Sample Id : BP-VPB-195-EB-20240215

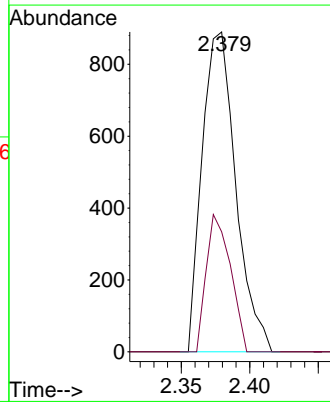
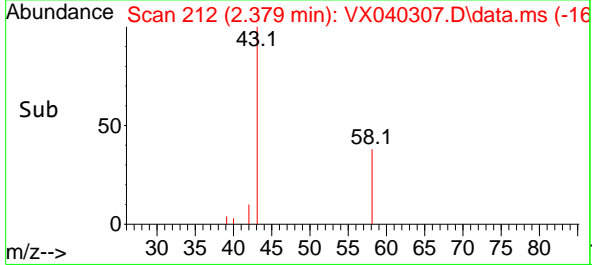
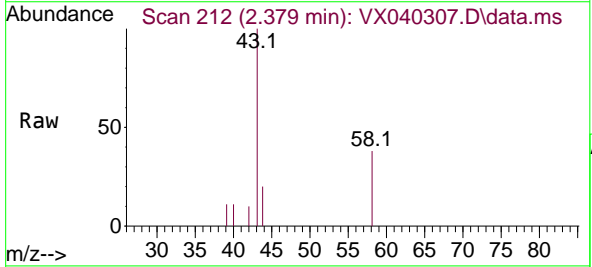


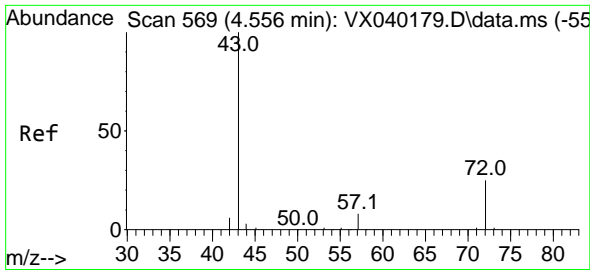
Tgt Ion:168 Resp: 71665
 Ion Ratio Lower Upper
 168 100
 99 54.1 56.6 85.0#



#16
 Acetone
 Concen: 3.480 ug/l
 RT: 2.379 min Scan# 212
 Delta R.T. -0.000 min
 Lab File: VX040307.D
 Acq: 17 Feb 2024 17:03

Tgt Ion: 43 Resp: 1524
 Ion Ratio Lower Upper
 43 100
 58 37.5 21.9 32.9#

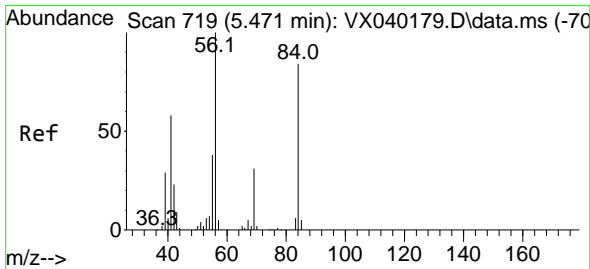
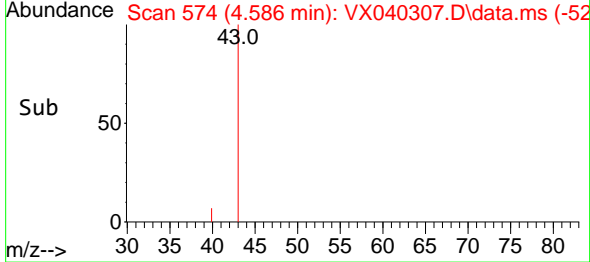
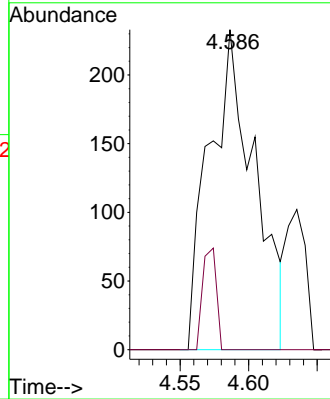
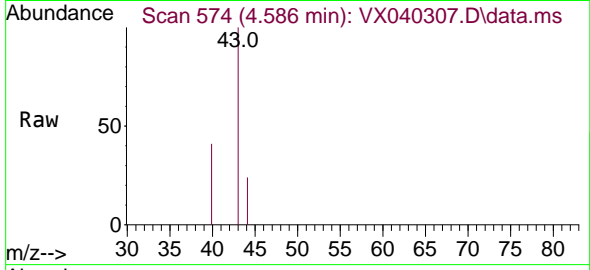




#25
 2-Butanone
 Concen: 0.780 ug/l
 RT: 4.586 min Scan# 51
 Delta R.T. 0.030 min
 Lab File: VX040307.D
 Acq: 17 Feb 2024 17:03

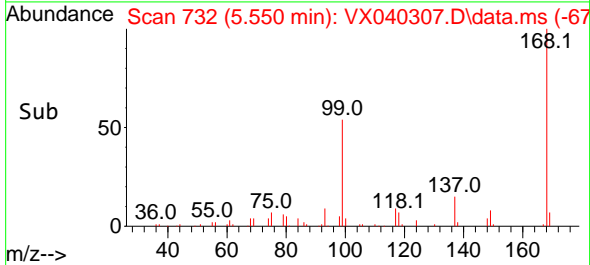
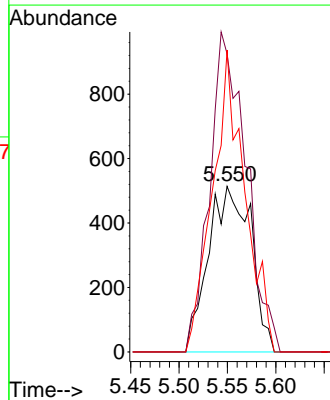
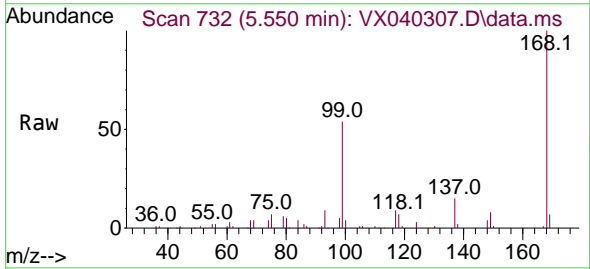
Instrument : MSVOA_X
 ClientSampleId : BP-VPB-195-EB-20240215

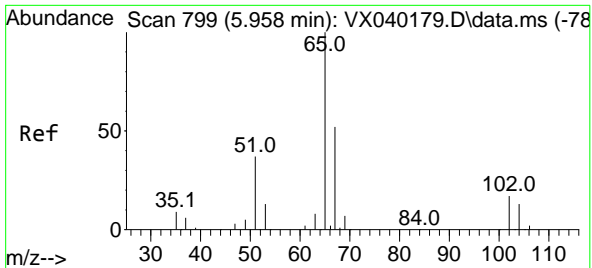
Tgt Ion: 43 Resp: 534
 Ion Ratio Lower Upper
 43 100
 72 0.0 19.4 29.2#



#31
 Cyclohexane
 Concen: 1.242 ug/l
 RT: 5.550 min Scan# 732
 Delta R.T. 0.079 min
 Lab File: VX040307.D
 Acq: 17 Feb 2024 17:03

Tgt Ion: 56 Resp: 1580
 Ion Ratio Lower Upper
 56 100
 69 180.0 23.4 35.2#
 84 182.3 65.9 98.9#

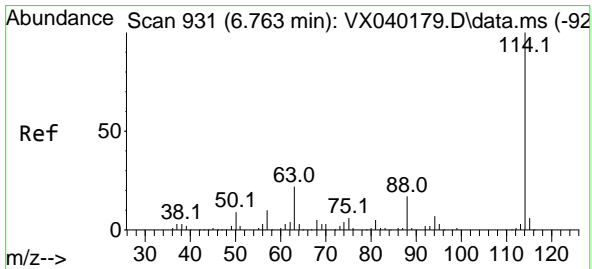
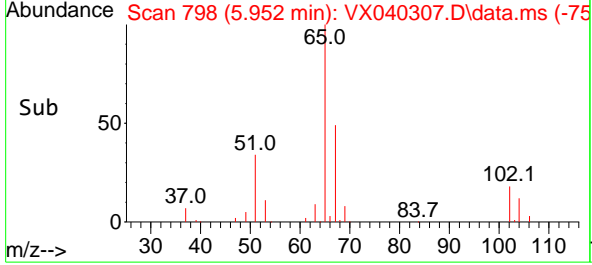
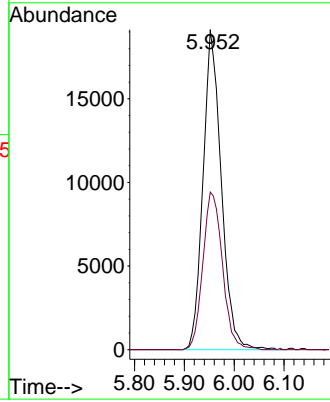
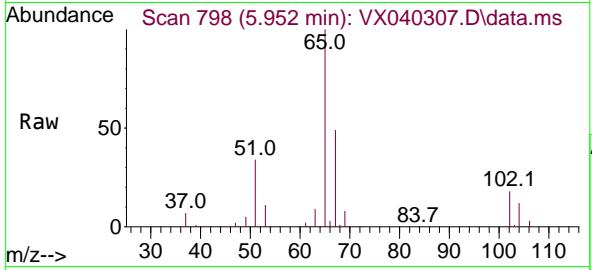




#33
 1,2-Dichloroethane-d4
 Concen: 45.632 ug/l
 RT: 5.952 min Scan# 798
 Delta R.T. -0.006 min
 Lab File: VX040307.D
 Acq: 17 Feb 2024 17:03

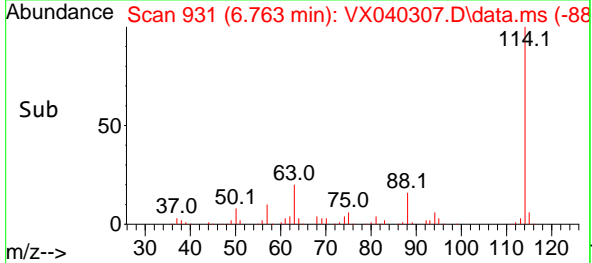
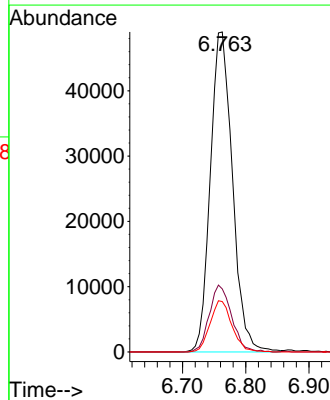
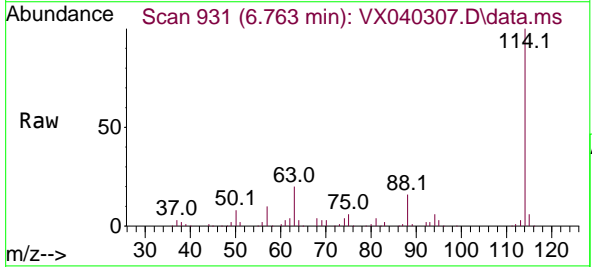
Instrument : MSVOA_X
 ClientSampleId : BP-VPB-195-EB-20240215

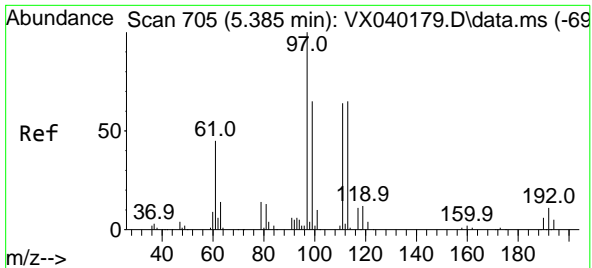
Tgt Ion: 65 Resp: 48651
 Ion Ratio Lower Upper
 65 100
 67 52.9 0.0 100.2



#34
 1,4-Difluorobenzene
 Concen: 50.000 ug/l
 RT: 6.763 min Scan# 931
 Delta R.T. -0.000 min
 Lab File: VX040307.D
 Acq: 17 Feb 2024 17:03

Tgt Ion:114 Resp: 118990
 Ion Ratio Lower Upper
 114 100
 63 19.7 0.0 45.0
 88 15.7 0.0 36.6

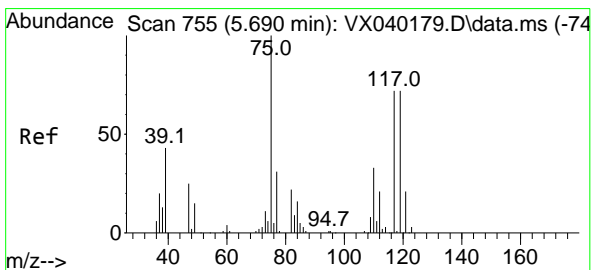
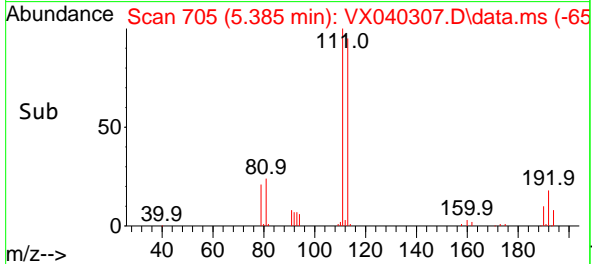
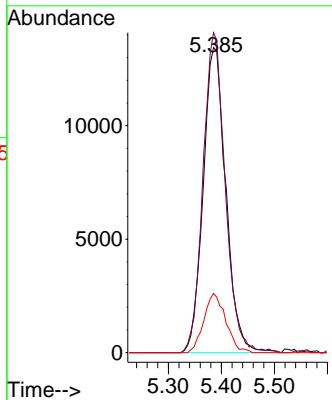
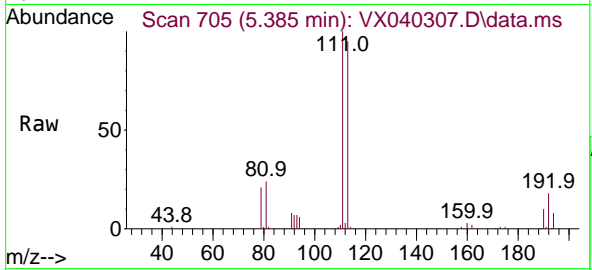




#35
 Dibromofluoromethane
 Concen: 48.120 ug/l
 RT: 5.385 min Scan# 705
 Delta R.T. -0.000 min
 Lab File: VX040307.D
 Acq: 17 Feb 2024 17:03

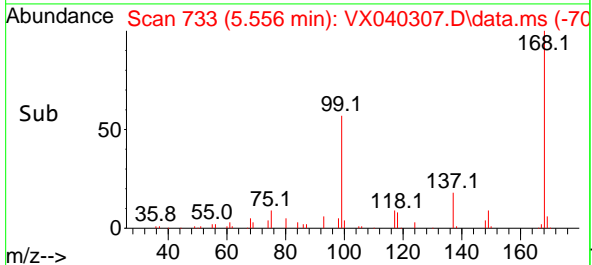
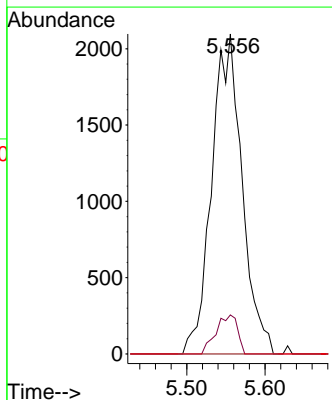
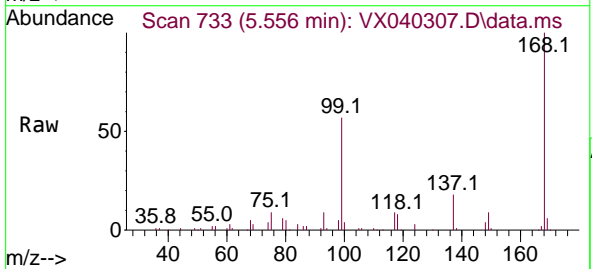
Instrument : MSVOA_X
 ClientSampleId : BP-VPB-195-EB-20240215

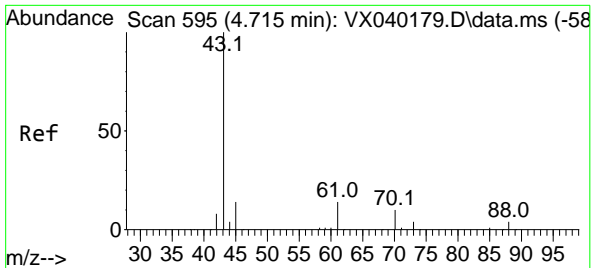
Tgt Ion	Resp	Lower	Upper
113	39986		
113	100		
111	102.5	82.9	124.3
192	18.7	13.3	19.9



#36
 1,1-Dichloropropene
 Concen: 4.842 ug/l
 RT: 5.556 min Scan# 733
 Delta R.T. -0.140 min
 Lab File: VX040307.D
 Acq: 17 Feb 2024 17:03

Tgt Ion	Resp	Lower	Upper
75	5636		
75	100		
110	8.7	17.0	50.9#
77	0.0	24.7	37.1#

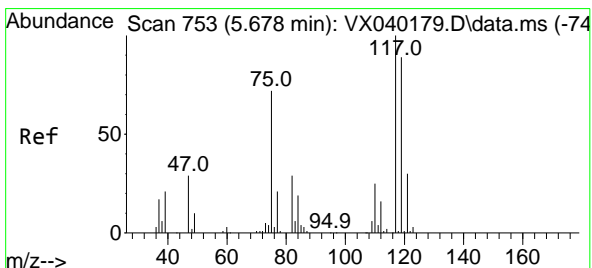
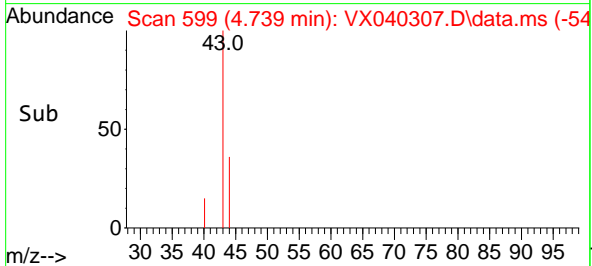
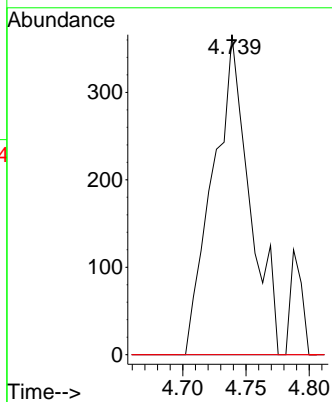
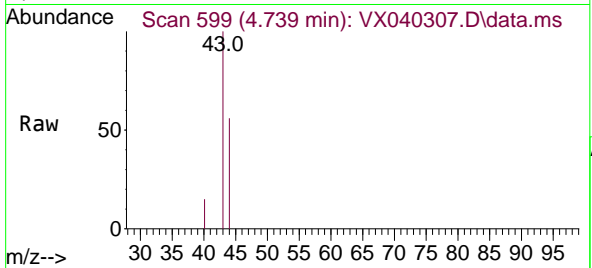




#37
 Ethyl Acetate
 Concen: 0.570 ug/l
 RT: 4.739 min Scan# 595
 Delta R.T. 0.018 min
 Lab File: VX040307.D
 Acq: 17 Feb 2024 17:03

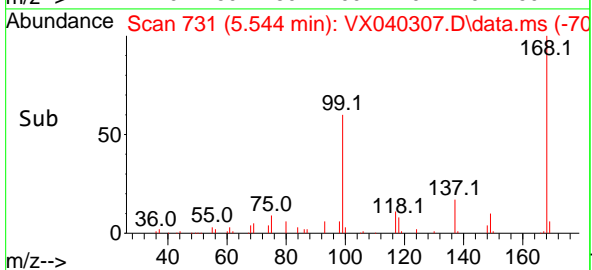
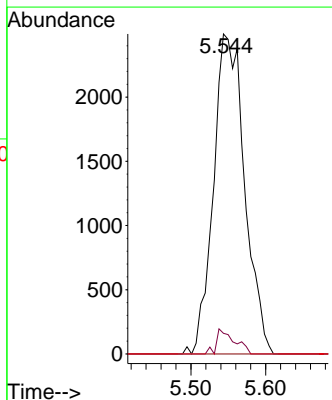
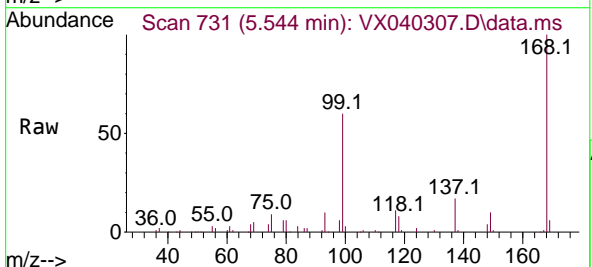
Instrument : MSVOA_X
 ClientSampleId : BP-VPB-195-EB-20240215

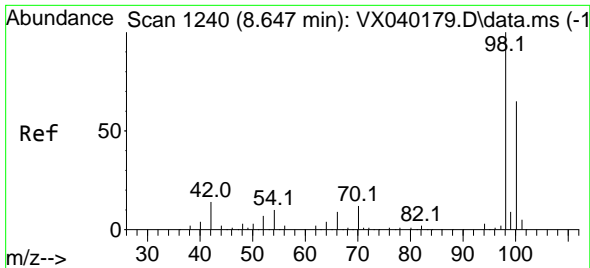
Tgt Ion	Resp	Lower	Upper
43	100		
61	0.0	10.6	16.0#
70	0.0	8.3	12.5#



#38
 Carbon Tetrachloride
 Concen: 6.519 ug/l
 RT: 5.544 min Scan# 731
 Delta R.T. -0.128 min
 Lab File: VX040307.D
 Acq: 17 Feb 2024 17:03

Tgt Ion	Resp	Lower	Upper
117	100		
119	6.5	78.2	117.2#
121	0.0	24.4	36.6#

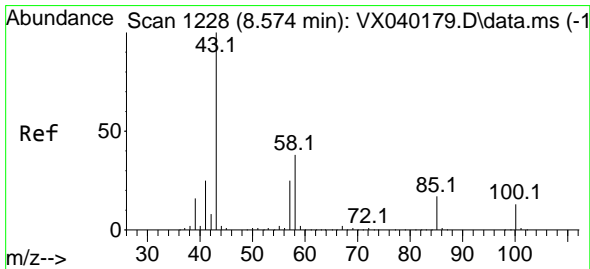
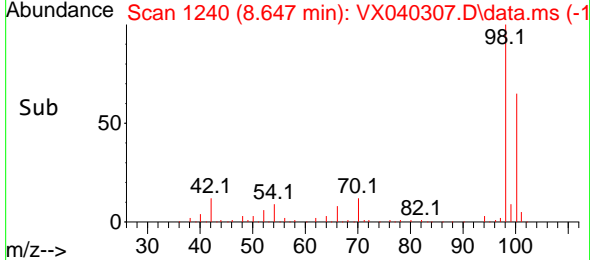
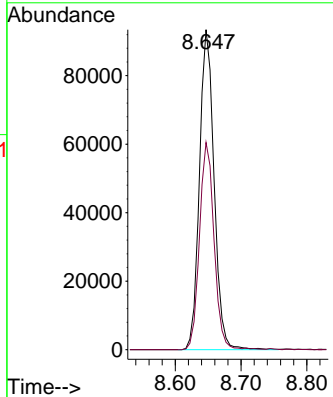
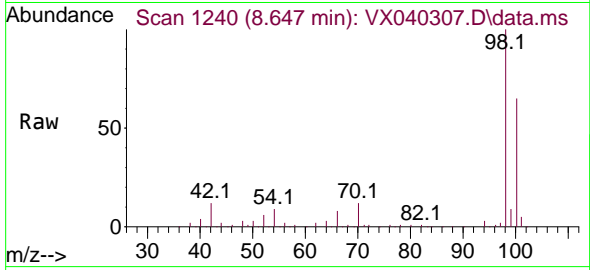




#50
 Toluene-d8
 Concen: 46.496 ug/l
 RT: 8.647 min Scan# 11
 Delta R.T. -0.006 min
 Lab File: VX040307.D
 Acq: 17 Feb 2024 17:03

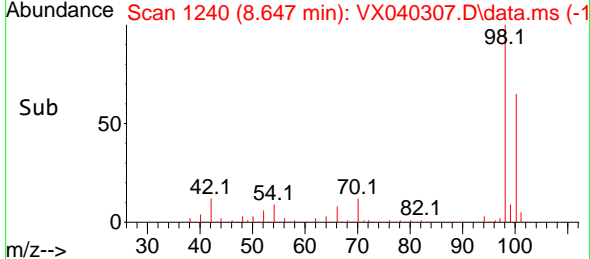
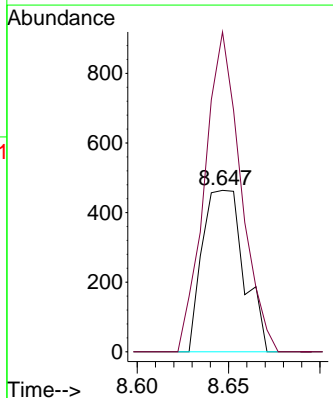
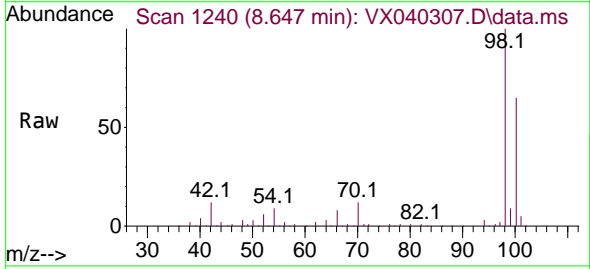
Instrument : MSVOA_X
 ClientSampleId : BP-VPB-195-EB-20240215

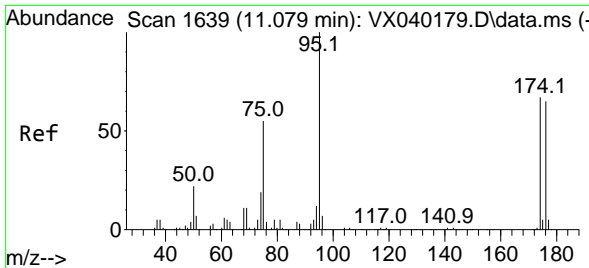
Tgt Ion: 98 Resp: 144526
 Ion Ratio Lower Upper
 98 100
 100 64.6 53.1 79.7



#51
 4-Methyl-2-Pentanone
 Concen: 0.532 ug/l
 RT: 8.647 min Scan# 1240
 Delta R.T. 0.073 min
 Lab File: VX040307.D
 Acq: 17 Feb 2024 17:03

Tgt Ion: 43 Resp: 734
 Ion Ratio Lower Upper
 43 100
 58 172.5 30.4 45.6#



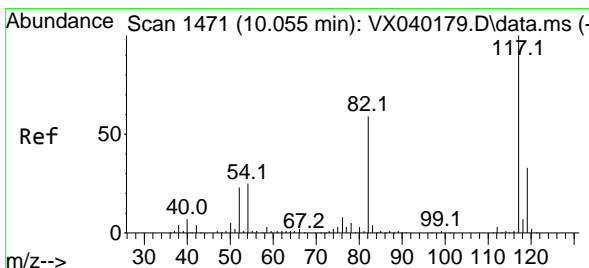
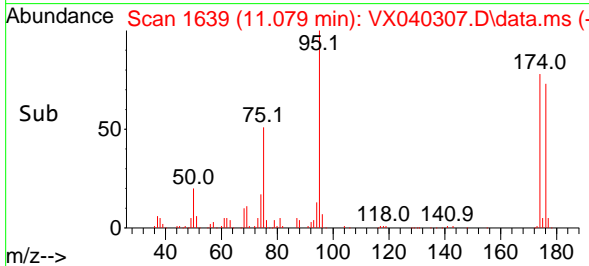
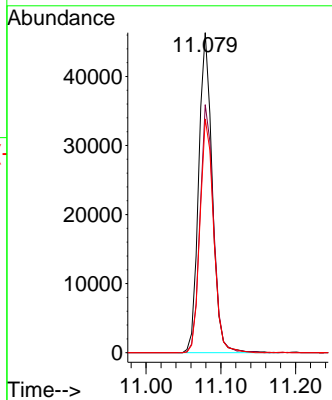
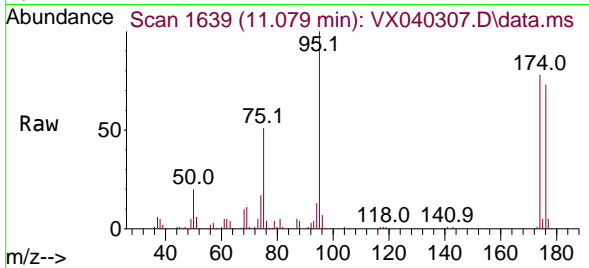


#62
 4-Bromofluorobenzene
 Concen: 45.951 ug/l
 RT: 11.079 min Scan# 1639
 Delta R.T. -0.000 min
 Lab File: VX040307.D
 Acq: 17 Feb 2024 17:03

Instrument : MSVOA_X
 ClientSampleId : BP-VPB-195-EB-20240215

Tgt Ion: 95 Resp: 58253

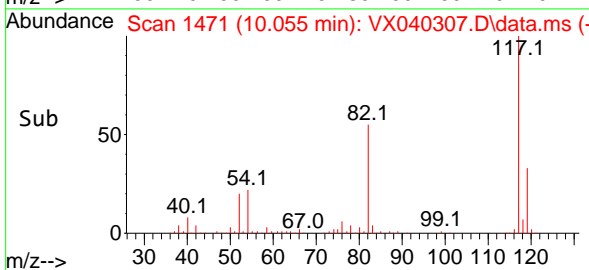
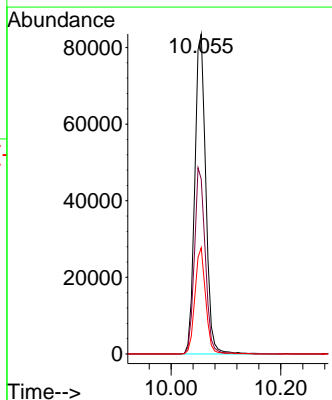
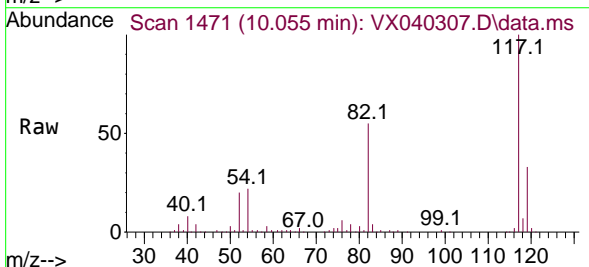
Ion	Ratio	Lower	Upper
95	100		
174	77.8	0.0	135.6
176	73.7	0.0	131.0

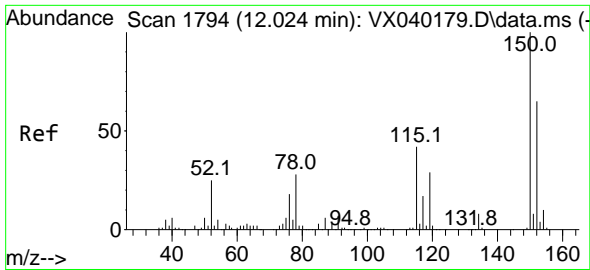


#63
 Chlorobenzene-d5
 Concen: 50.000 ug/l
 RT: 10.055 min Scan# 1471
 Delta R.T. -0.000 min
 Lab File: VX040307.D
 Acq: 17 Feb 2024 17:03

Tgt Ion: 117 Resp: 116985

Ion	Ratio	Lower	Upper
117	100		
82	54.6	46.2	69.4
119	33.2	25.5	38.3

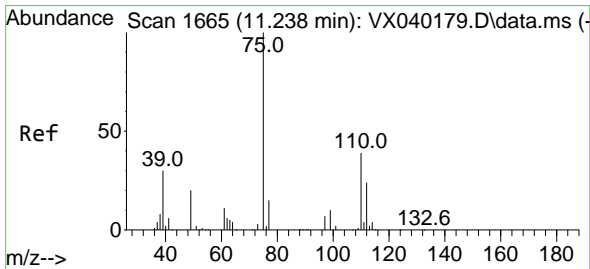
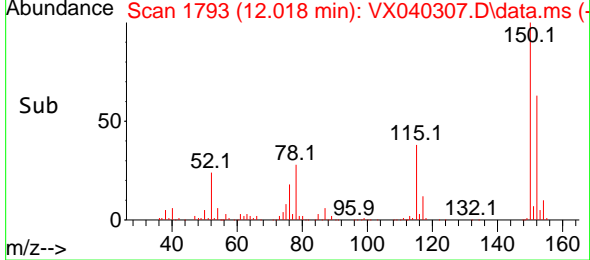
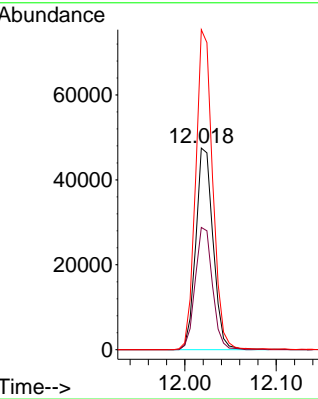
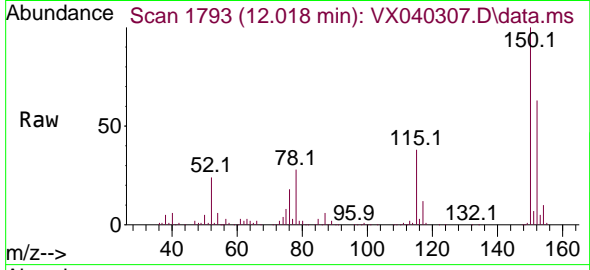




#72
 1,4-Dichlorobenzene-d4
 Concen: 50.000 ug/l
 RT: 12.018 min Scan# 11
 Delta R.T. -0.006 min
 Lab File: VX040307.D
 Acq: 17 Feb 2024 17:03

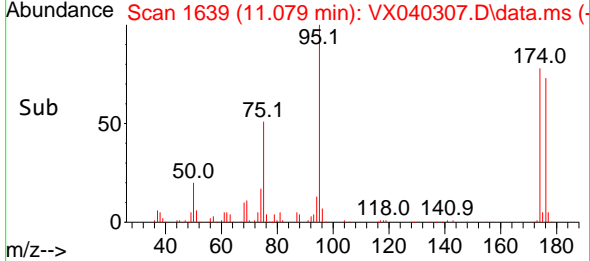
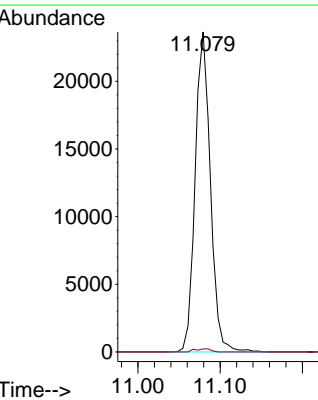
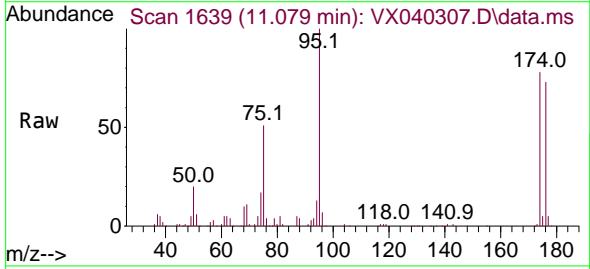
Instrument : MSVOA_X
 ClientSampleId : BP-VPB-195-EB-20240215

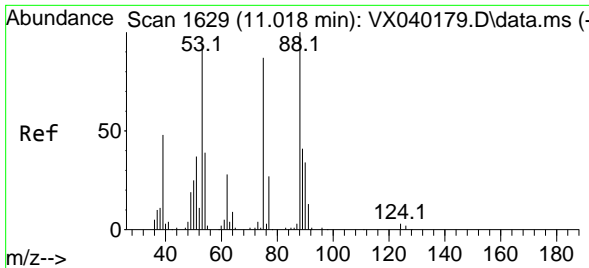
Tgt Ion	Resp	Lower	Upper
152	62350		
115	60.2	43.3	129.9
150	155.7	0.0	345.0



#76
 1,2,3-Trichloropropane
 Concen: 24.139 ug/l
 RT: 11.079 min Scan# 1639
 Delta R.T. -0.159 min
 Lab File: VX040307.D
 Acq: 17 Feb 2024 17:03

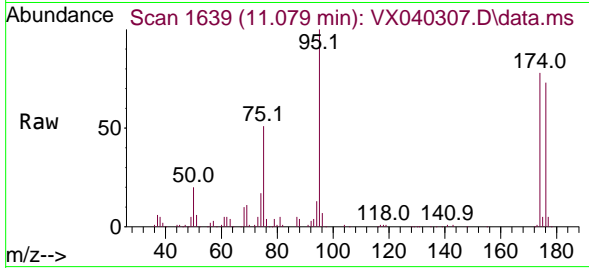
Tgt Ion	Resp	Lower	Upper
75	30478		
75	100		
77	1.0	19.1	57.5#





#81
 trans-1,4-Dichloro-2-butene
 Concen: 66.522 ug/l
 RT: 11.079 min Scan# 1
 Delta R.T. 0.061 min
 Lab File: VX040307.D
 Acq: 17 Feb 2024 17:03

Instrument : MSVOA_X
 ClientSampleId : BP-VPB-195-EB-20240215



Tgt Ion: 75 Resp: 30478

Ion	Ratio	Lower	Upper
75	100		
53	0.0	90.5	135.7#
89	0.0	36.9	55.3#

