

Data Path : Z:\VOASRV\HPCHEM1\MSVOA X\DATA\VX021919\
 Data File : VX007614.D
 Acq On : 19 Feb 2019 15:37
 Operator : JC/SP
 Sample : K1528-02DL 5X
 Misc : 5.0mL/MSVOA X/WATER
 ALS Vial : 15 Sample Multiplier: 1

Instrument :
 MSVOA_X
 Client Sampled :
 MW-2DL

Quant Time: Feb 20 04:05:06 2019
 Quant Method : Z:\VOASRV\HPCHEM1\MSVOA_X\METHOD\82X020119W.M
 Quant Title : SW846 8260
 QLast Update : Sat Feb 02 01:32:36 2019
 Response via : Initial Calibration

Internal Standards	R.T.	QIon	Response	Conc	Units	Dev(Min)
1) Pentafluorobenzene	5.67	168	496978	50.00	ug/l	0.00
34) 1,4-Difluorobenzene	6.86	114	773963	50.00	ug/l	0.00
63) Chlorobenzene-d5	10.11	117	740649	50.00	ug/l	0.00
72) 1,4-Dichlorobenzene-d4	12.08	152	380467	50.00	ug/l	0.00

System Monitoring Compounds

33) 1,2-Dichloroethane-d4	6.07	65	260155	49.32	ug/l	0.00
Spiked Amount	50.000		Recovery	=	98.64%	
35) Dibromofluoromethane	5.50	113	245032	48.66	ug/l	0.00
Spiked Amount	50.000		Recovery	=	97.32%	
50) Toluene-d8	8.71	98	935202	50.05	ug/l	0.00
Spiked Amount	50.000		Recovery	=	100.10%	
62) 4-Bromofluorobenzene	11.13	95	347473	50.94	ug/l	0.00
Spiked Amount	50.000		Recovery	=	101.88%	

Target Compounds

	R.T.	QIon	Response	Conc	Units	Qvalue
2) Dichlorodifluoromethane	1.20	85	427	0.247	ug/l #	43
5) Bromomethane	1.64	94	156	Below Cal	#	3
11) Tert butyl alcohol	3.05	59	259	0.237	ug/l #	73
13) Acrolein	2.40	56	16208	31.662	ug/l #	82
14) Allyl chloride	2.84	41	98243	12.707	ug/l #	62
15) Acrylonitrile	3.17	53	25652	9.499	ug/l #	41
16) Acetone	2.40	43	43638	18.060	ug/l #	51
17) Carbon Disulfide	2.57	76	782	2.181	ug/l #	64
18) Methyl Acetate	2.85	43	248435	39.585	ug/l #	51
20) Methylene Chloride	2.86	84	1254	Below Cal	#	1
23) Vinyl Acetate	3.74	43	3503	0.297	ug/l #	85
25) 2-Butanone	4.70	43	3732	1.085	ug/l	97
30) Chloroform	5.27	83	17509	2.054	ug/l #	36
31) Cyclohexane	5.58	56	153403	20.913	ug/l	94
36) 1,1-Dichloropropene	5.66	75	30973	4.460	ug/l #	50
38) Carbon Tetrachloride	5.66	117	44253	6.569	ug/l #	17
39) Methylcyclohexane	7.46	83	347964	41.415	ug/l	95
41) Methacrylonitrile	5.05	41	2714	0.721	ug/l #	33
43) Isopropyl Acetate	6.46	43	12259	1.131	ug/l #	63
44) Trichloroethene	7.21	130	2089	0.339	ug/l	82
47) Bromodichloromethane	7.85	83	2217	0.351	ug/l #	66
48) Methyl methacrylate	7.73	41	36876	6.804	ug/l #	54
49) 1,4-Dioxane	7.77	88	93	7.628	ug/l #	1
55) 1,1,2-Trichloroethane	9.16	97	28450	5.171	ug/l #	17
56) Ethyl methacrylate	9.16	69	7752	1.017	ug/l #	18
59) 2-Hexanone	9.50	43	1318	0.237	ug/l	81
60) Dibromochloromethane	9.34	129	13278	2.552	ug/l #	12
64) Tetrachloroethene	9.34	164	14694	2.105	ug/l	92
67) Ethyl Benzene	10.25	91	28452	1.093	ug/l	98
68) m/p-Xylenes	10.35	106	36231	3.502	ug/l	95
71) Bromoform	11.01	173	157	4.060	ug/l #	29
73) Isopropylbenzene	11.02	105	110839	4.287	ug/l	99
76) 1,2,3-Trichloropropane	11.43	75	16408	2.217	ug/l #	1
78) n-propylbenzene	11.36	91	609047	21.482	ug/l	100

Data Path : Z:\VOASRV\HPCHEM1\MSVOA X\DATA\VX021919\
 Data File : VX007614.D
 Acq On : 19 Feb 2019 15:37
 Operator : JC/SP
 Sample : K1528-02DL 5X
 Misc : 5.0mL/MSVOA X/WATER
 ALS Vial : 15 Sample Multiplier: 1

Instrument :
 MSVOA_X
 ClientSampleId :
 MW-2DL

Quant Time: Feb 20 04:05:06 2019
 Quant Method : Z:\VOASRV\HPCHEM1\MSVOA_X\METHOD\82X020119W.M
 Quant Title : SW846 8260
 QLast Update : Sat Feb 02 01:32:36 2019
 Response via : Initial Calibration

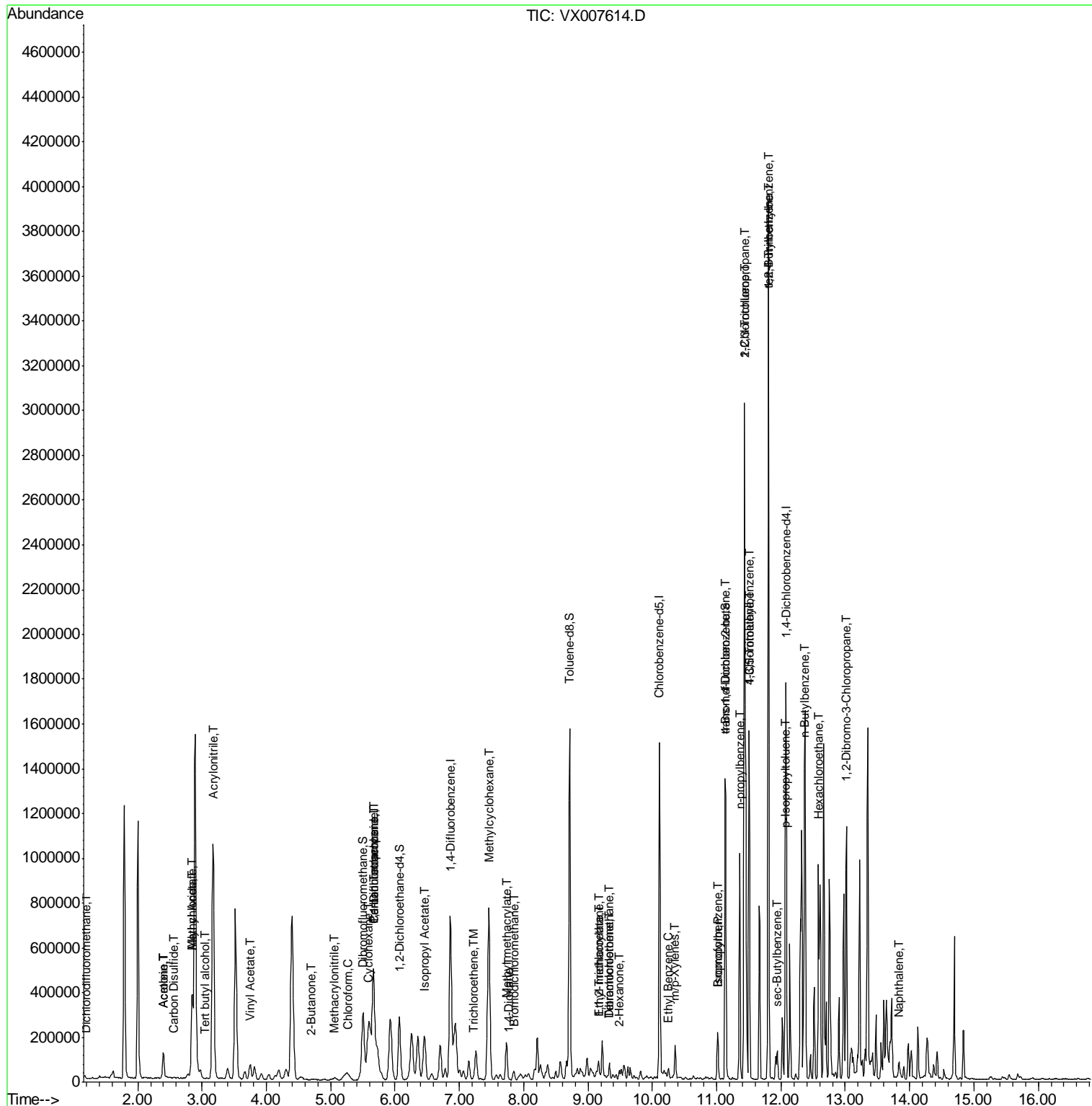
Internal Standards	R.T.	QIon	Response	Conc	Units	Dev(Min)
79) 2-Chlorotoluene	11.43	91	251480	14.618	ug/l #	38
80) 1,3,5-Trimethylbenzene	11.51	105	658273	31.121	ug/l	98
81) trans-1,4-Dichloro-2-buten	11.13	75	164836	67.252	ug/l #	9
82) 4-Chlorotoluene	11.51	91	67959	3.414	ug/l #	43
83) tert-Butylbenzene	11.80	119	212975	10.170	ug/l #	61
84) 1,2,4-Trimethylbenzene	11.80	105	1688633	78.634	ug/l	99
85) sec-Butylbenzene	11.94	105	67329	2.656	ug/l	98
86) p-Isopropyltoluene	12.06	119	39865	1.742	ug/l	93
89) n-Butylbenzene	12.38	91	246056	12.501	ug/l #	22
90) Hexachloroethane	12.58	117	39830	11.631	ug/l #	5
92) 1,2-Dibromo-3-Chloropropan	13.02	75	3081	1.881	ug/l #	2
95) Naphthalene	13.83	128	47259	1.842	ug/l #	92

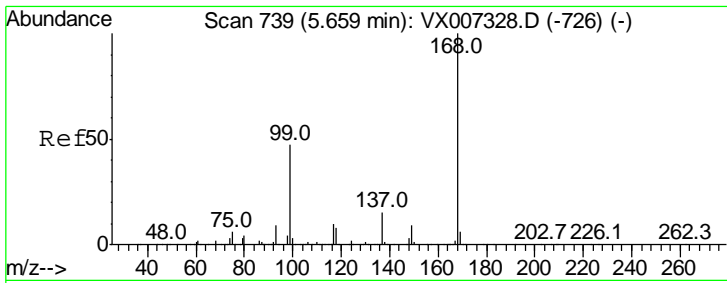
(#) = qualifier out of range (m) = manual integration (+) = signals summed

Data Path : Z:\VOASRV\HPCHEM1\MSVOA X\DATA\VX021919\
 Data File : VX007614.D
 Acq On : 19 Feb 2019 15:37
 Operator : JC/SP
 Sample : K1528-02DL 5X
 Misc : 5.0mL/MSVOA X/WATER
 ALS Vial : 15 Sample Multiplier: 1

Instrument :
 MSVOA_X
 Client Sampled :
 MW-2DL

Quant Time: Feb 20 04:05:06 2019
 Quant Method : Z:\VOASRV\HPCHEM1\MSVOA_X\METHOD\82X020119W.M
 Quant Title : SW846 8260
 QLast Update : Sat Feb 02 01:32:36 2019
 Response via : Initial Calibration

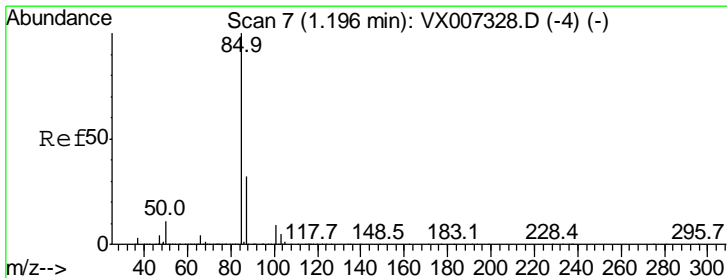
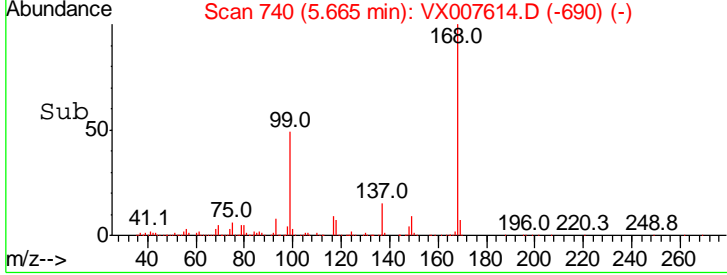
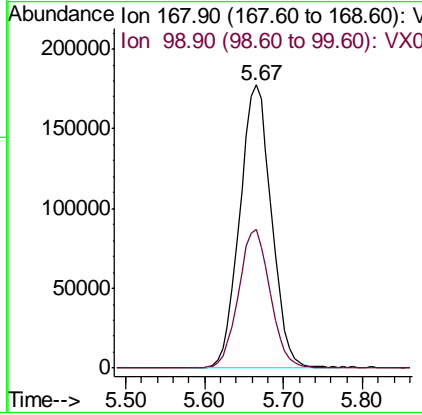
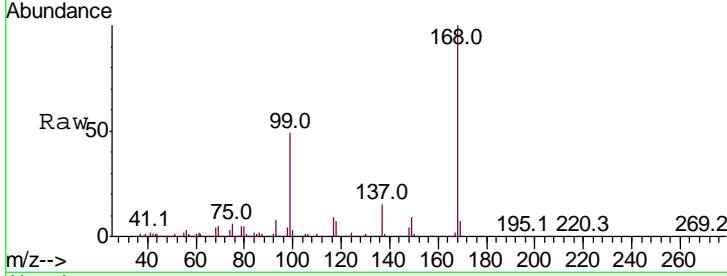




#1
 Pentafluorobenzene
 Concen: 50.000 ug/l
 RT: 5.67 min Scan# 740
 Delta R.T. 0.01 min
 Lab File: VX007614.D
 Acq: 19 Feb 2019 15:37

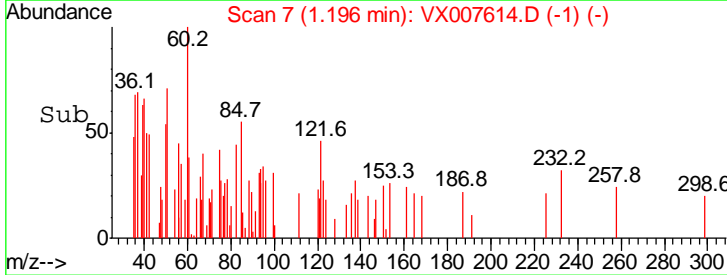
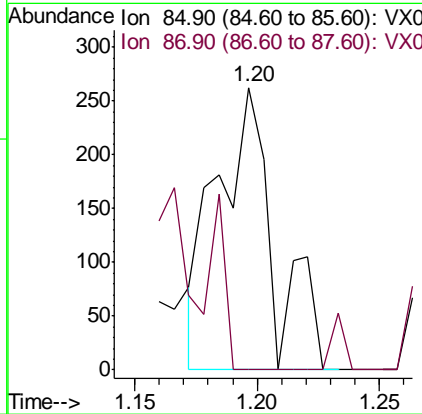
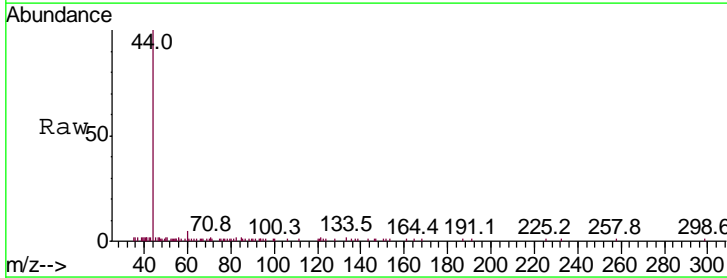
Instrument : MSVOA_X
 ClientSampled : MW-2DL

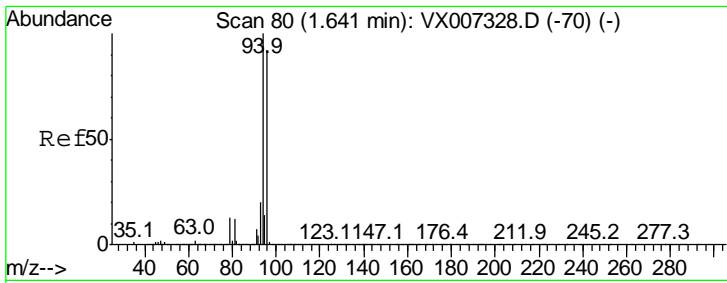
Tgt Ion	Resp	Lower	Upper
168	100		
99	49.0	37.9	56.9



#2
 Dichlorodifluoromethane
 Concen: 0.247 ug/l
 RT: 1.20 min Scan# 7
 Delta R.T. 0.00 min
 Lab File: VX007614.D
 Acq: 19 Feb 2019 15:37

Tgt Ion	Resp	Lower	Upper
85	100		
87	0.0	15.8	47.4#

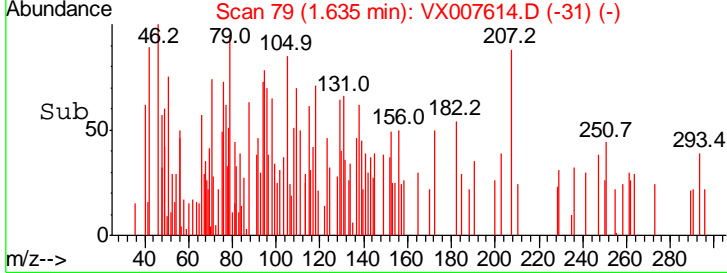
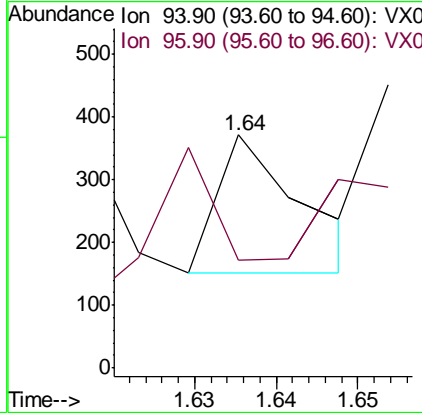
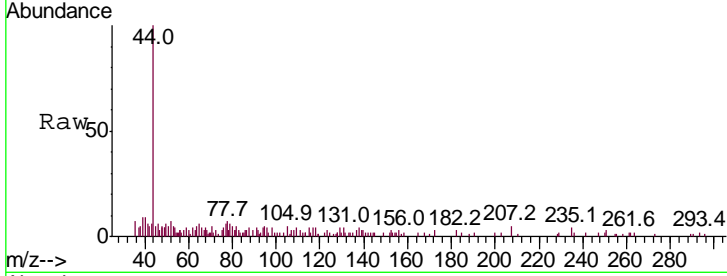




#5
 Bromomethane
 Concen: Below Cal
 RT: 1.64 min Scan# 79
 Delta R.T. -0.01 min
 Lab File: VX007614.D
 Acq: 19 Feb 2019 15:37

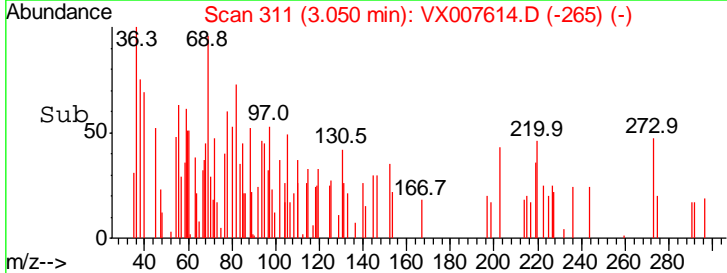
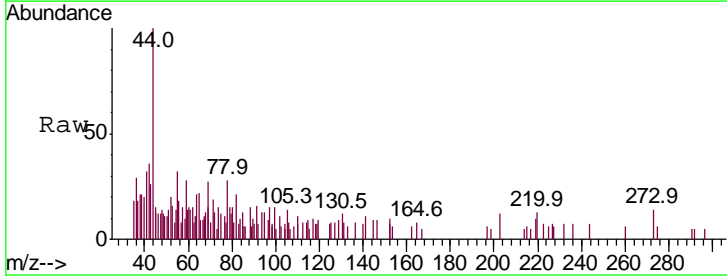
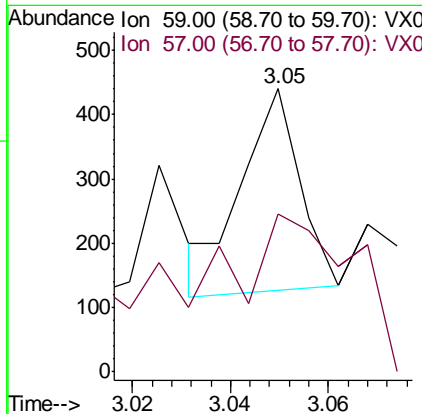
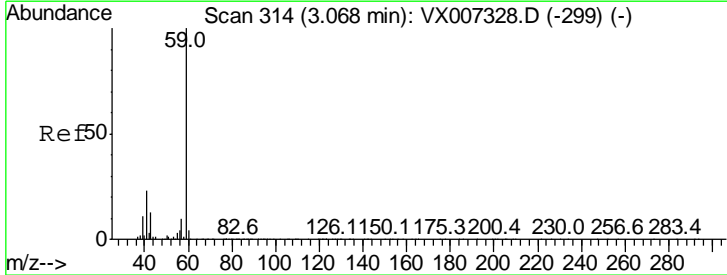
Instrument :
 MSVOA_X
 ClientSampled :
 MW-2DL

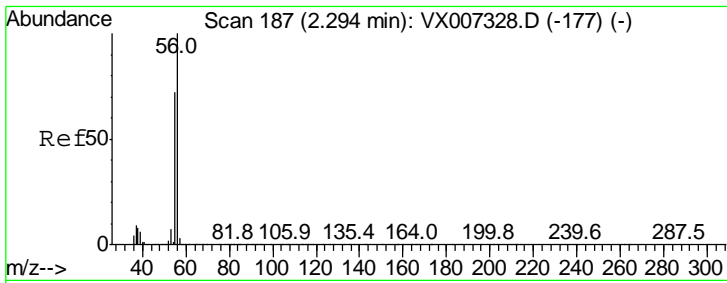
Tgt Ion: 94 Resp: 156
 Ion Ratio Lower Upper
 94 100
 96 0.0 73.9 110.9#



#11
 Tert butyl alcohol
 Concen: 0.237 ug/l
 RT: 3.05 min Scan# 311
 Delta R.T. -0.02 min
 Lab File: VX007614.D
 Acq: 19 Feb 2019 15:37

Tgt Ion: 59 Resp: 259
 Ion Ratio Lower Upper
 59 100
 57 0.0 8.1 12.1#

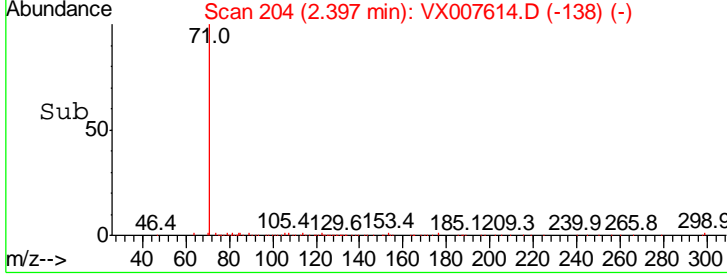
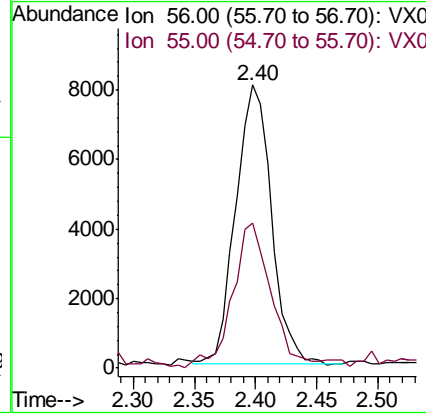
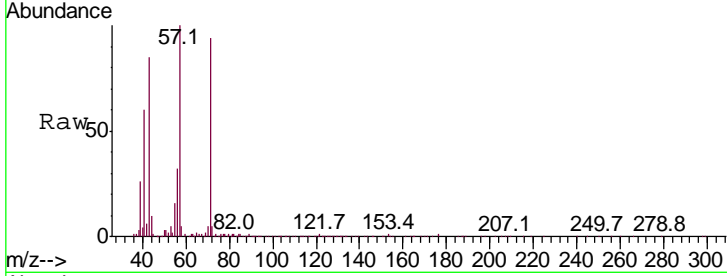




#13
 Acrolein
 Concen: 31.662 ug/l
 RT: 2.40 min Scan# 204
 Delta R.T. 0.10 min
 Lab File: VX007614.D
 Acq: 19 Feb 2019 15:37

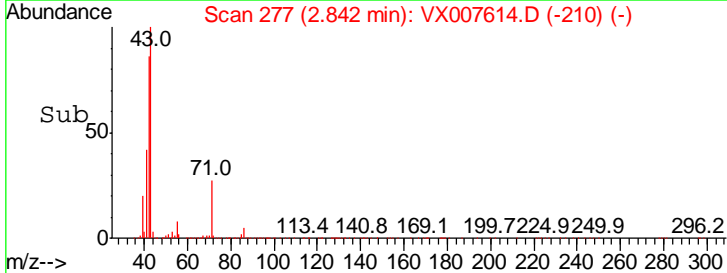
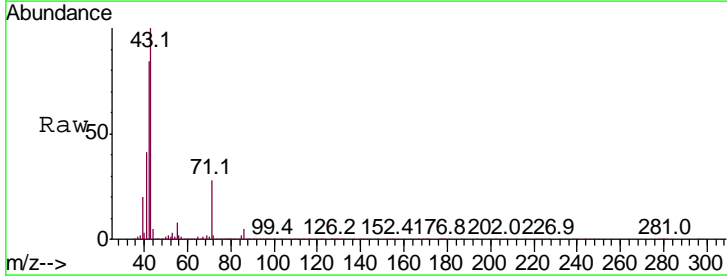
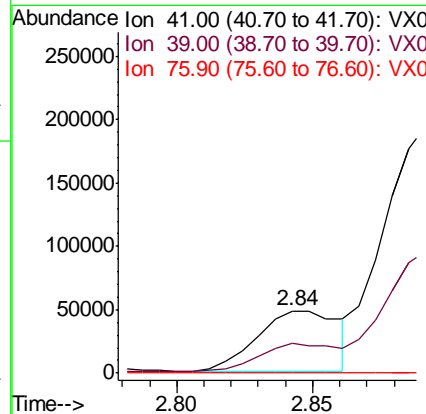
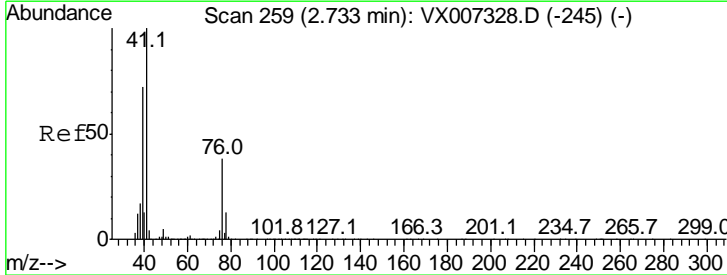
Instrument : MSVOA_X
 ClientSampled : MW-2DL

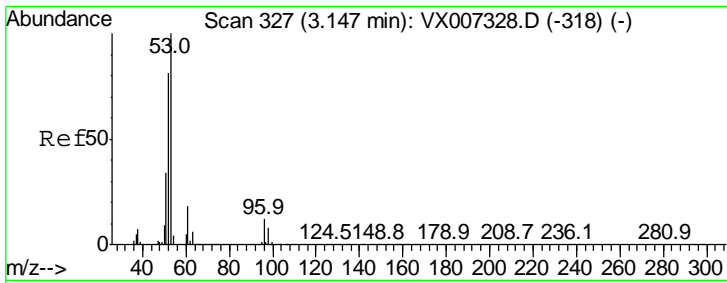
Tgt Ion	Resp	Lower	Upper
56	16208		
56	100		
55	56.5	56.9	85.3#



#14
 Allyl chloride
 Concen: 12.707 ug/l
 RT: 2.84 min Scan# 277
 Delta R.T. 0.11 min
 Lab File: VX007614.D
 Acq: 19 Feb 2019 15:37

Tgt Ion	Resp	Lower	Upper
41	98243		
41	100		
39	46.0	54.1	81.1#
76	0.2	27.8	41.8#

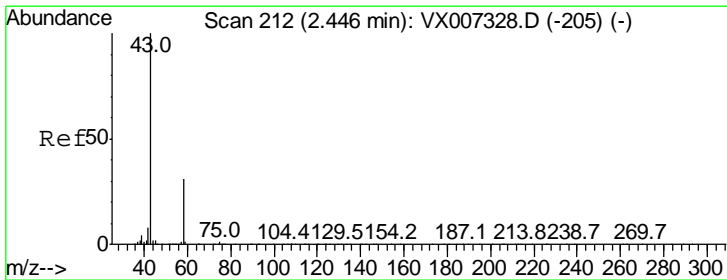
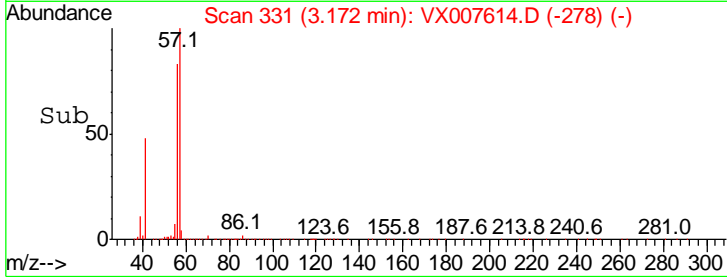
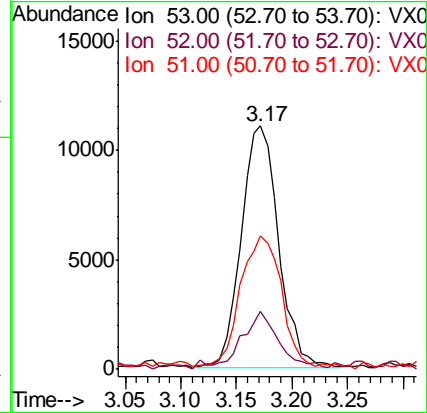
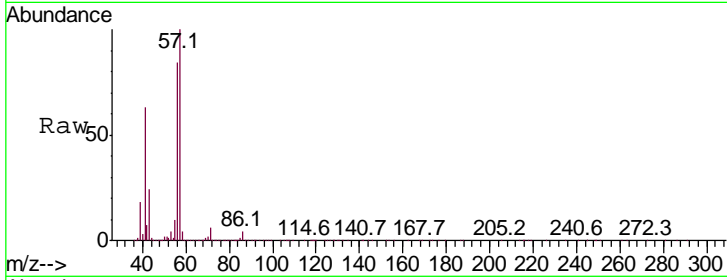




#15
 Acrylonitrile
 Concen: 9.499 ug/l
 RT: 3.17 min Scan# 331
 Delta R.T. 0.02 min
 Lab File: VX007614.D
 Acq: 19 Feb 2019 15:37

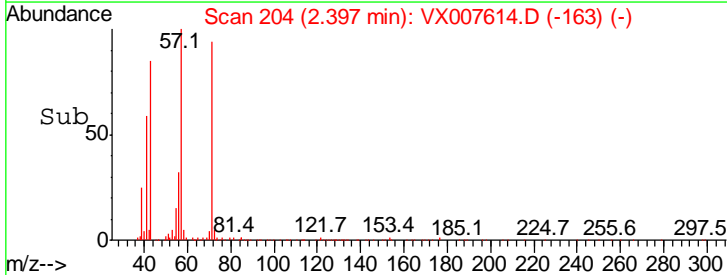
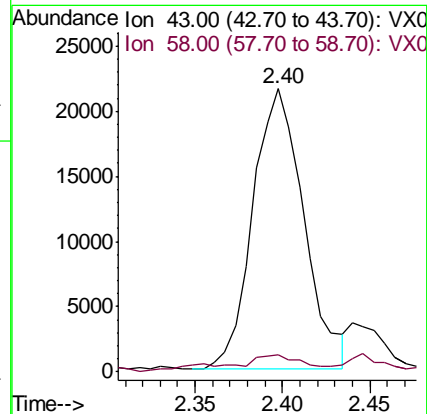
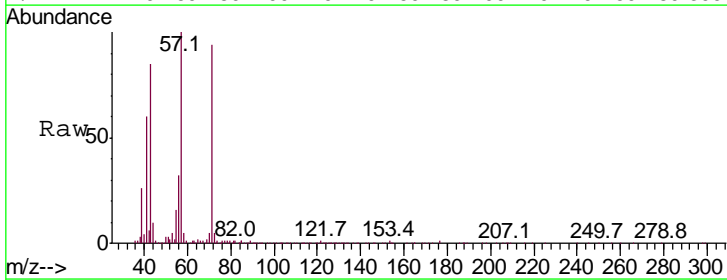
Instrument :
 MSVOA_X
 ClientSampled :
 MW-2DL

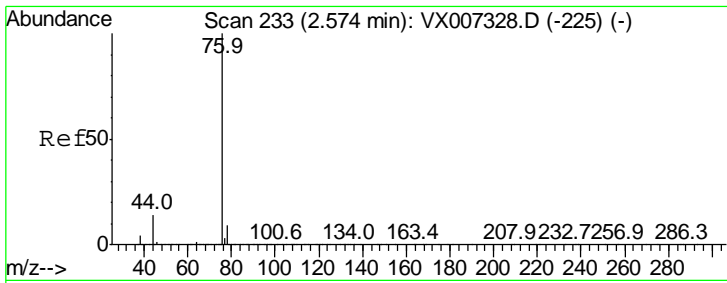
Tgt Ion	Resp	Lower	Upper
53	100		
52	22.0	66.4	99.6#
51	57.9	28.4	42.6#



#16
 Acetone
 Concen: 18.060 ug/l
 RT: 2.40 min Scan# 204
 Delta R.T. -0.05 min
 Lab File: VX007614.D
 Acq: 19 Feb 2019 15:37

Tgt Ion	Resp	Lower	Upper
43	100		
58	3.9	24.9	37.3#

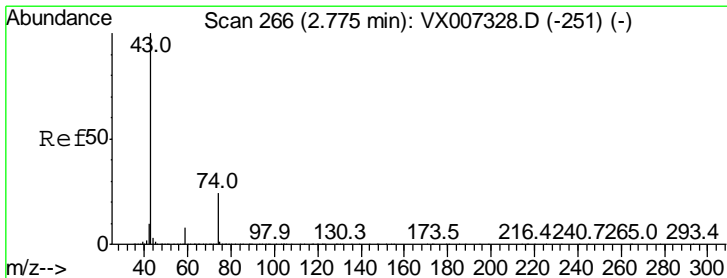
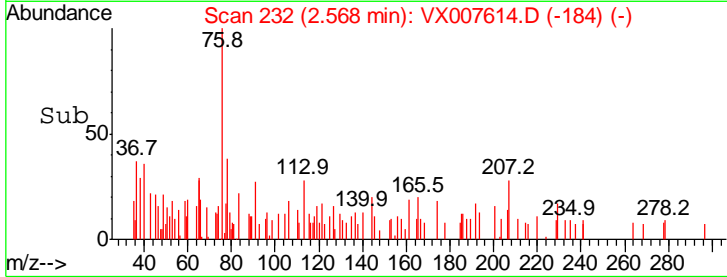
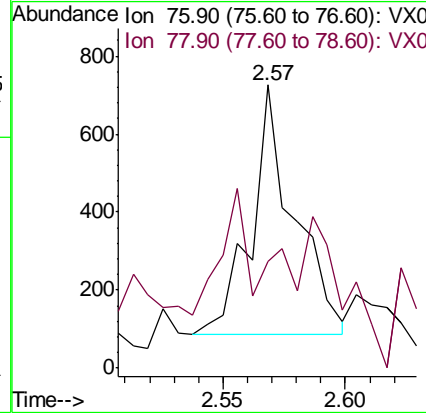
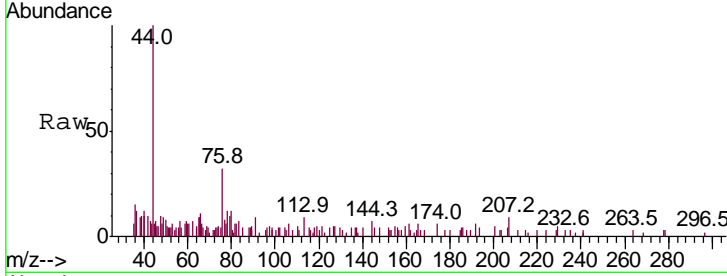




#17
 Carbon Disulfide
 Concen: 2.181 ug/l
 RT: 2.57 min Scan# 232
 Delta R.T. -0.01 min
 Lab File: VX007614.D
 Acq: 19 Feb 2019 15:37

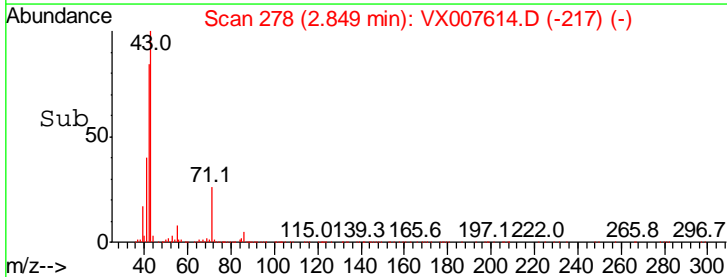
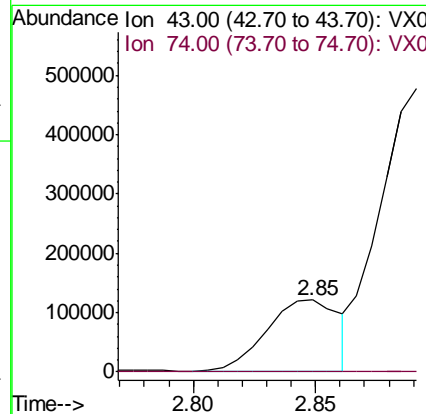
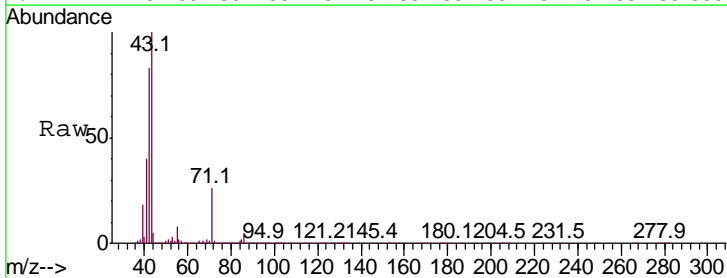
Instrument :
 MSVOA_X
 ClientSampled :
 MW-2DL

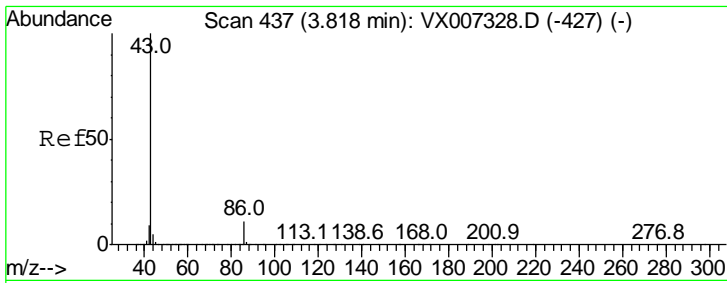
Tgt Ion: 76 Resp: 782
 Ion Ratio Lower Upper
 76 100
 78 21.8 7.1 10.7#



#18
 Methyl Acetate
 Concen: 39.585 ug/l
 RT: 2.85 min Scan# 278
 Delta R.T. 0.07 min
 Lab File: VX007614.D
 Acq: 19 Feb 2019 15:37

Tgt Ion: 43 Resp: 248435
 Ion Ratio Lower Upper
 43 100
 74 0.0 19.4 29.2#

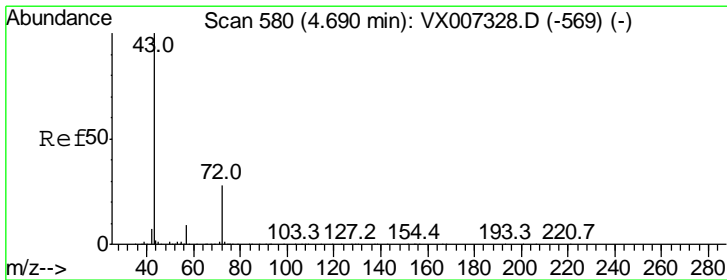
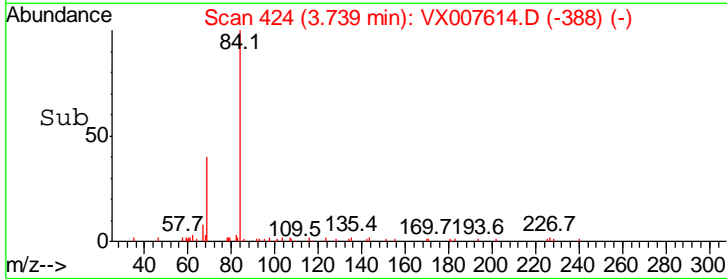
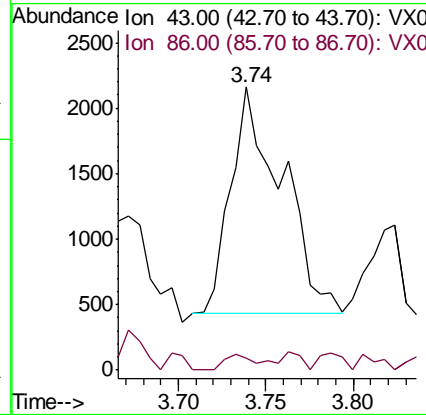
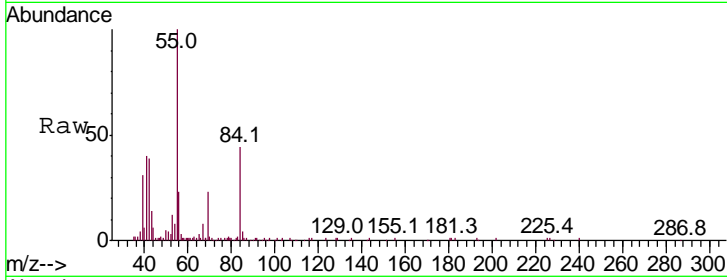




#23
 Vinyl Acetate
 Concen: 0.297 ug/l
 RT: 3.74 min Scan# 424
 Delta R.T. -0.08 min
 Lab File: VX007614.D
 Acq: 19 Feb 2019 15:37

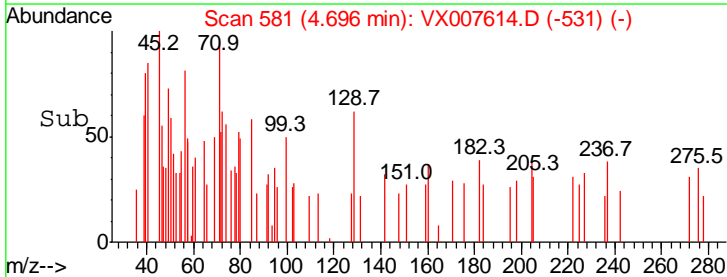
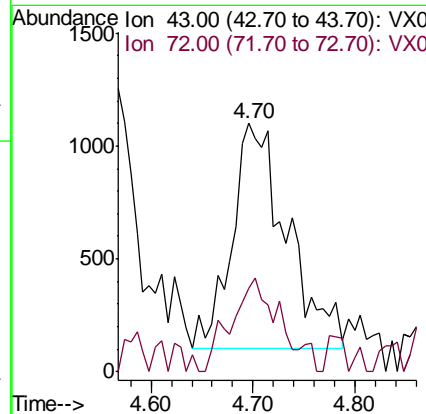
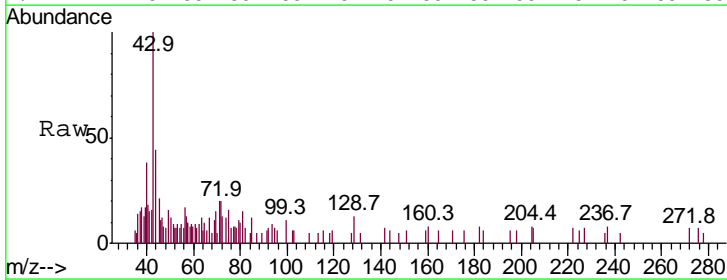
Instrument :
 MSVOA_X
 ClientSampled :
 MW-2DL

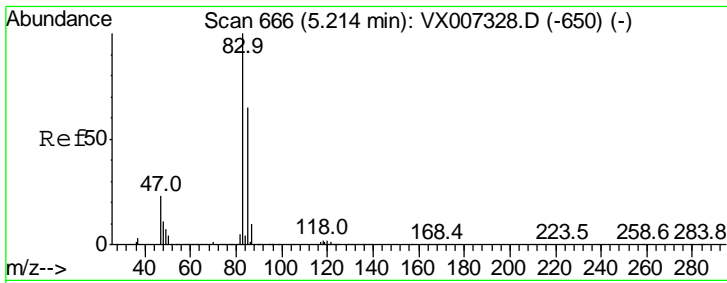
Tgt Ion: 43 Resp: 3503
 Ion Ratio Lower Upper
 43 100
 86 5.3 8.7 13.1#



#25
 2-Butanone
 Concen: 1.085 ug/l
 RT: 4.70 min Scan# 581
 Delta R.T. 0.01 min
 Lab File: VX007614.D
 Acq: 19 Feb 2019 15:37

Tgt Ion: 43 Resp: 3732
 Ion Ratio Lower Upper
 43 100
 72 29.3 22.2 33.2

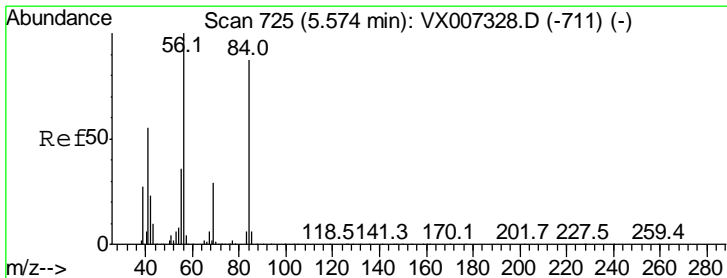
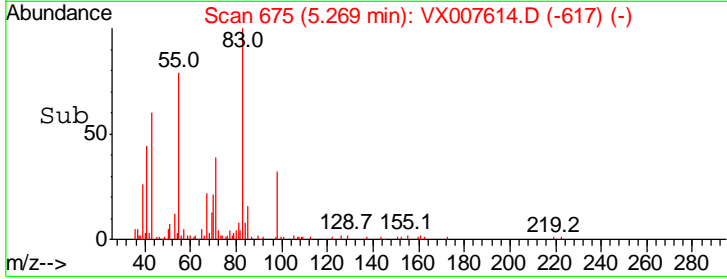
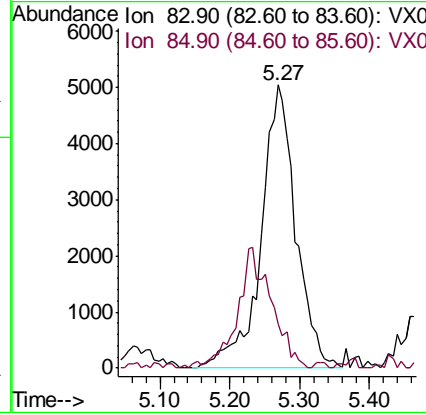
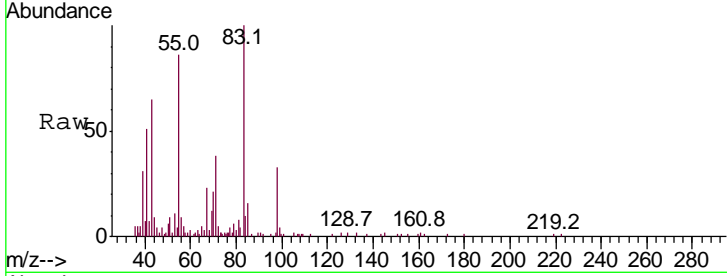




#30
 Chloroform
 Concen: 2.054 ug/l
 RT: 5.27 min Scan# 675
 Delta R.T. 0.05 min
 Lab File: VX007614.D
 Acq: 19 Feb 2019 15:37

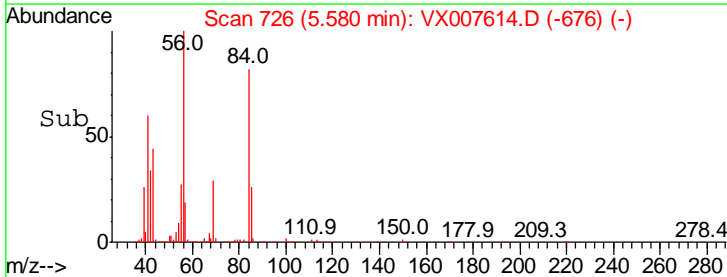
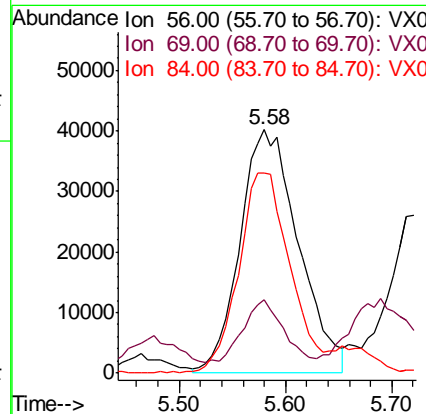
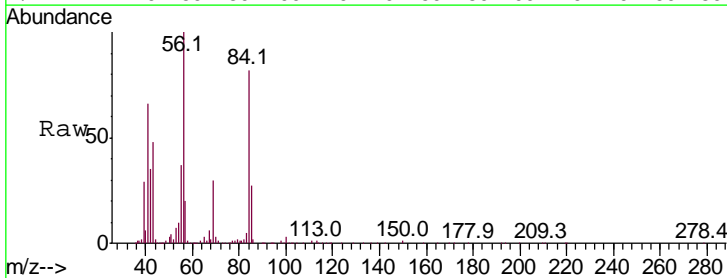
Instrument :
 MSVOA_X
 ClientSampled :
 MW-2DL

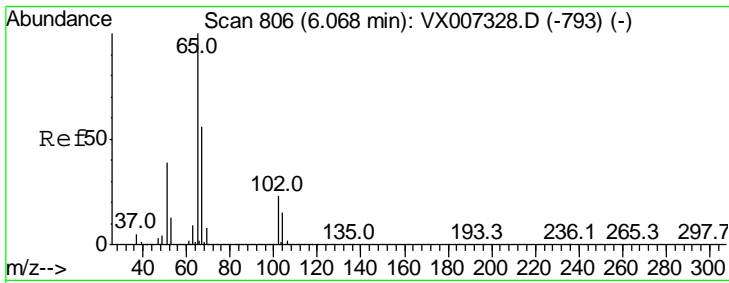
Tgt Ion	Resp	Lower	Upper
83	100		
85	14.2	51.6	77.4#



#31
 Cyclohexane
 Concen: 20.913 ug/l
 RT: 5.58 min Scan# 726
 Delta R.T. 0.01 min
 Lab File: VX007614.D
 Acq: 19 Feb 2019 15:37

Tgt Ion	Resp	Lower	Upper
56	100		
69	24.5	23.0	34.6
84	82.8	69.8	104.6

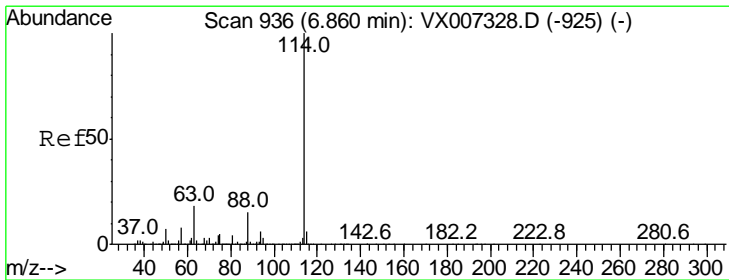
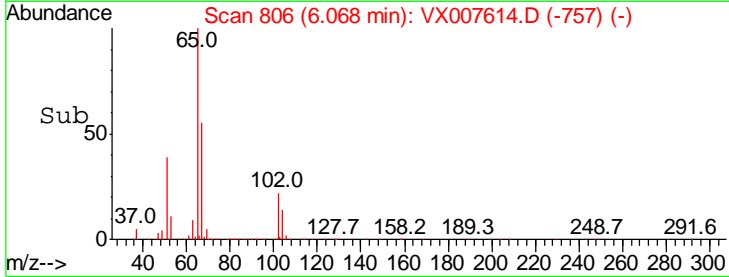
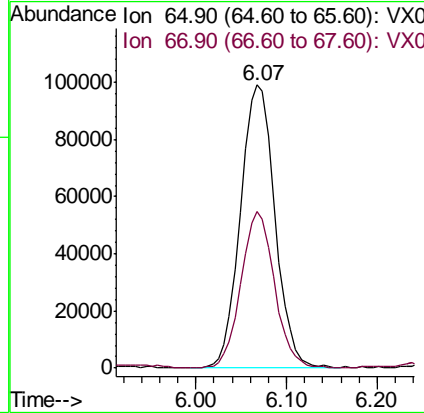
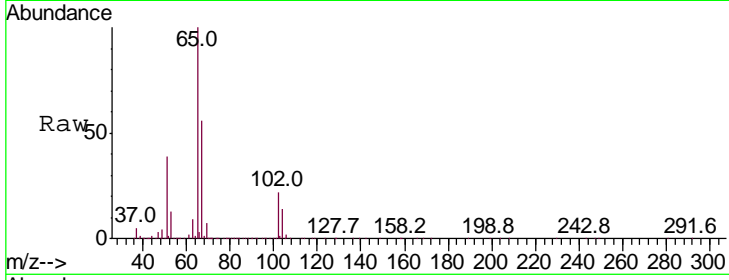




#33
 1,2-Dichloroethane-d4
 Concen: 49.318 ug/l
 RT: 6.07 min Scan# 806
 Delta R.T. 0.00 min
 Lab File: VX007614.D
 Acq: 19 Feb 2019 15:37

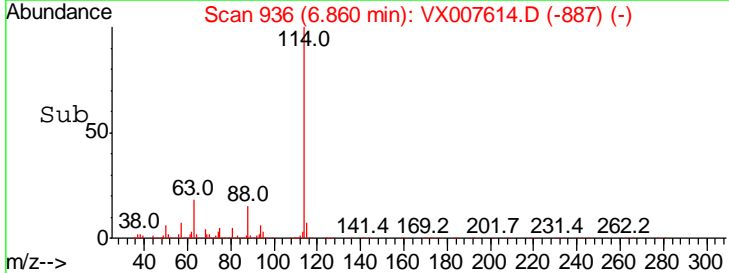
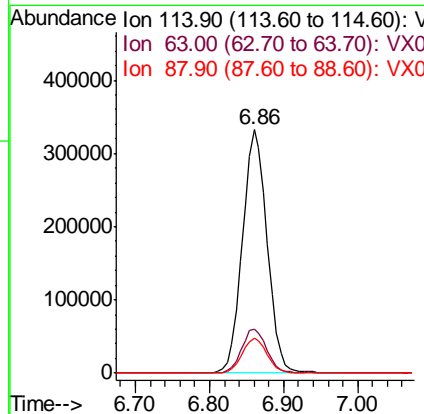
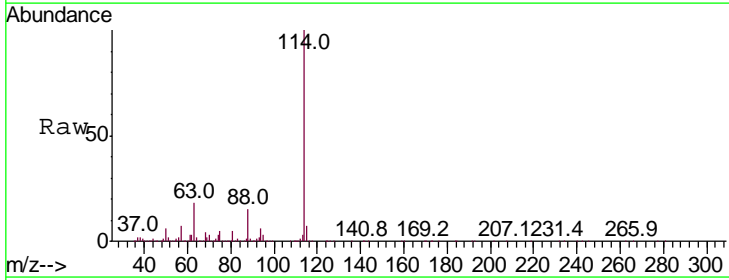
Instrument :
 MSVOA_X
 ClientSampled :
 MW-2DL

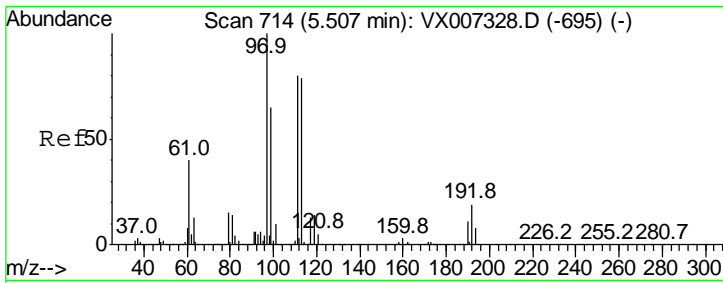
Tgt Ion	Resp	Lower	Upper
65	100		
67	53.7	0.0	108.8



#34
 1,4-Difluorobenzene
 Concen: 50.000 ug/l
 RT: 6.86 min Scan# 936
 Delta R.T. -0.00 min
 Lab File: VX007614.D
 Acq: 19 Feb 2019 15:37

Tgt Ion	Resp	Lower	Upper
114	100		
63	17.9	0.0	35.6
88	14.5	0.0	29.6

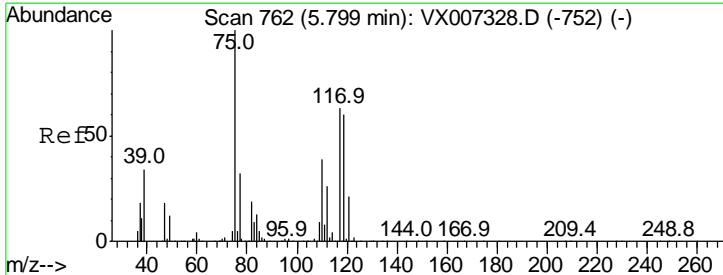
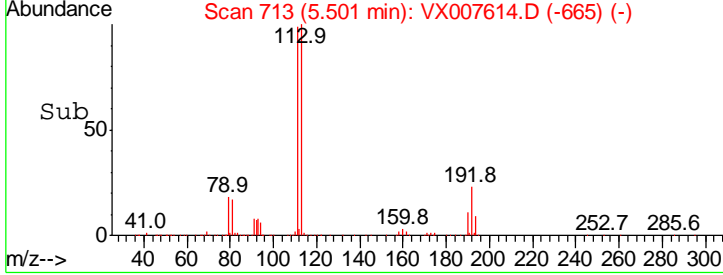
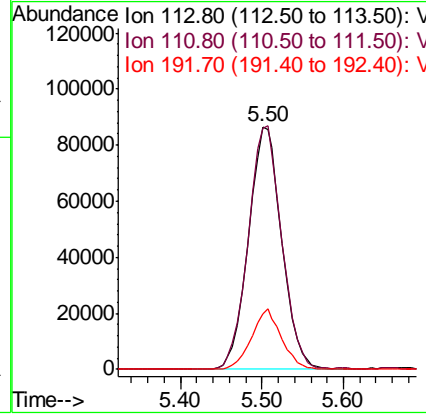
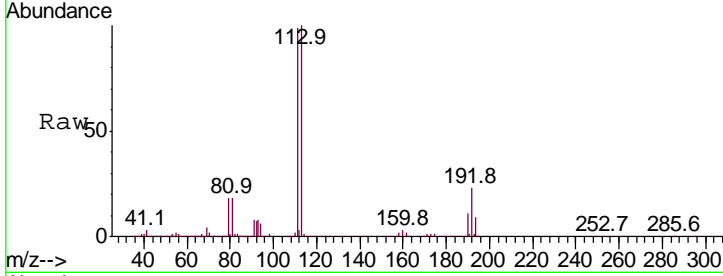




#35
 Dibromofluoromethane
 Concen: 48.657 ug/l
 RT: 5.50 min Scan# 713
 Delta R.T. -0.01 min
 Lab File: VX007614.D
 Acq: 19 Feb 2019 15:37

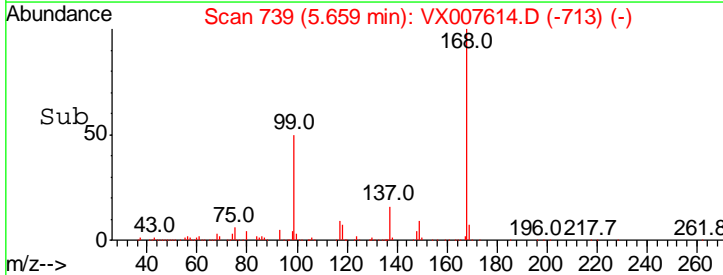
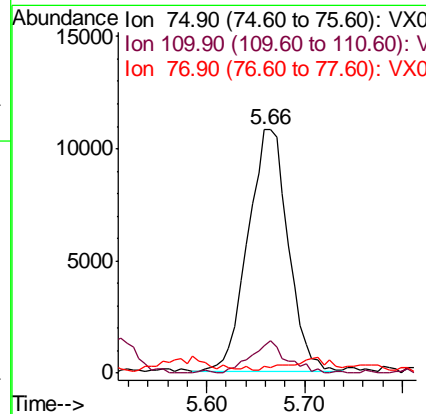
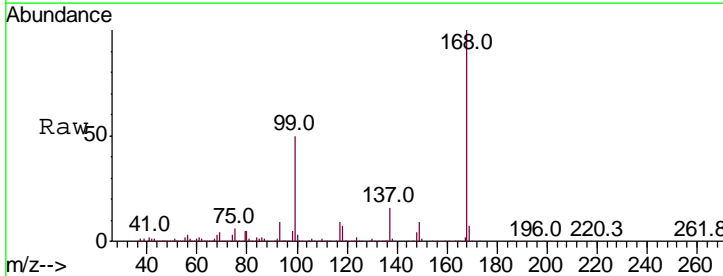
Instrument :
 MSVOA_X
ClientSampled :
 MW-2DL

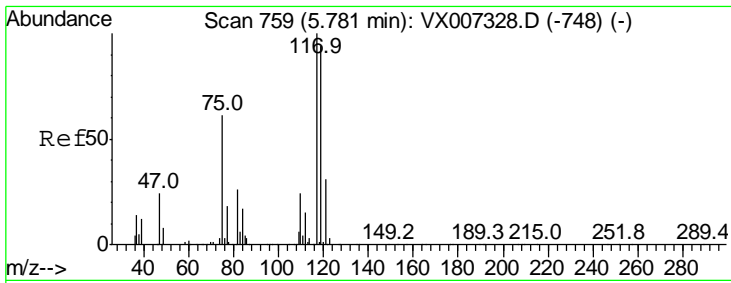
Tgt Ion	Resp	Lower	Upper
113	100		
111	100.9	81.8	122.8
192	22.6	18.5	27.7



#36
 1,1-Dichloropropene
 Concen: 4.460 ug/l
 RT: 5.66 min Scan# 739
 Delta R.T. -0.14 min
 Lab File: VX007614.D
 Acq: 19 Feb 2019 15:37

Tgt Ion	Resp	Lower	Upper
75	100		
110	11.6	20.0	59.9#
77	0.0	24.7	37.1#

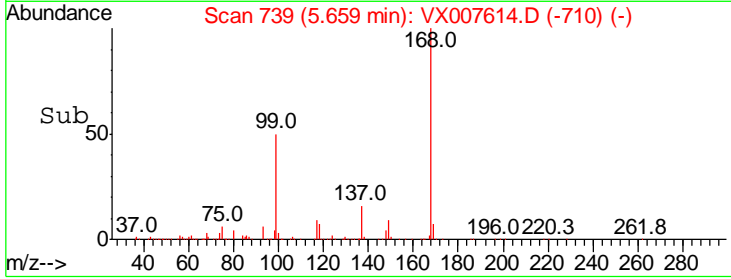
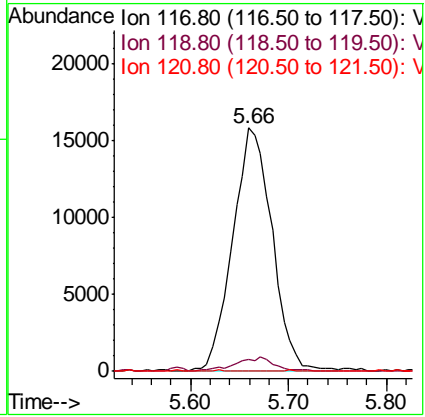
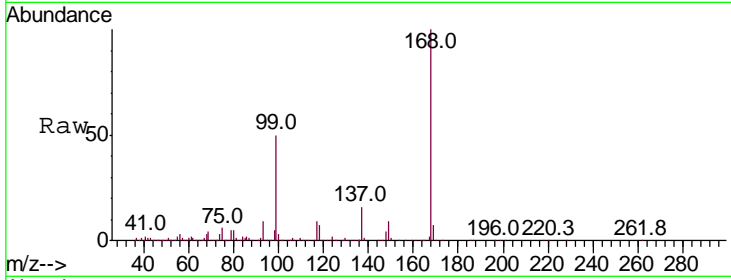




#38
 Carbon Tetrachloride
 Concen: 6.569 ug/l
 RT: 5.66 min Scan# 739
 Delta R.T. -0.12 min
 Lab File: VX007614.D
 Acq: 19 Feb 2019 15:37

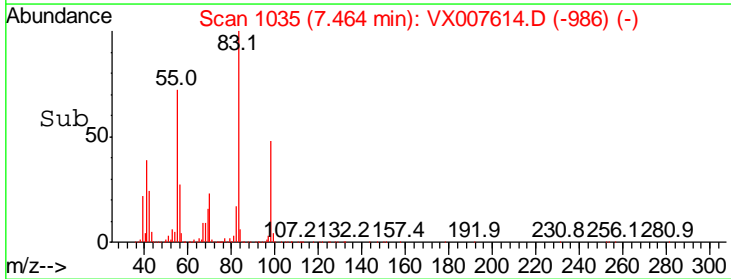
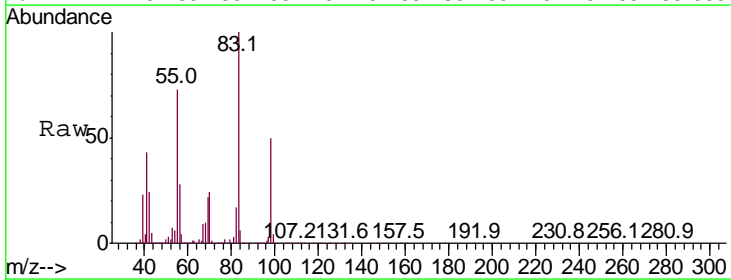
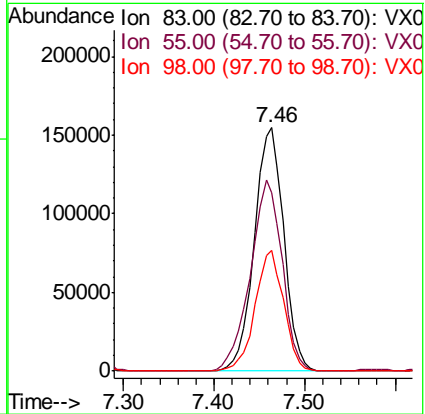
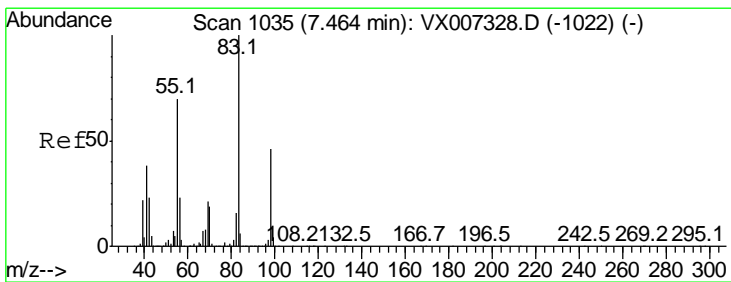
Instrument :
 MSVOA_X
Client Sampled :
 MW-2DL

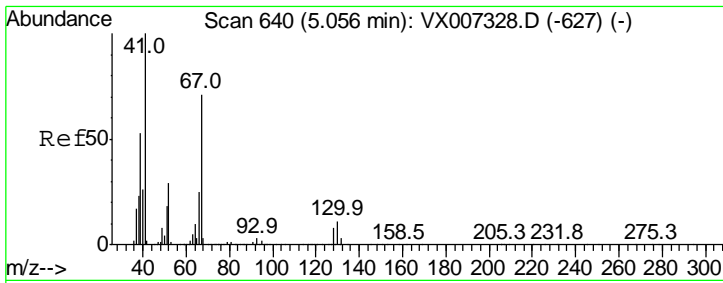
Tgt Ion	Ratio	Lower	Upper
117	100		
119	5.0	75.3	112.9#
121	0.0	25.0	37.4#



#39
 Methylcyclohexane
 Concen: 41.415 ug/l
 RT: 7.46 min Scan# 1035
 Delta R.T. -0.00 min
 Lab File: VX007614.D
 Acq: 19 Feb 2019 15:37

Tgt Ion	Ratio	Lower	Upper
83	100		
55	73.3	56.2	84.2
98	49.7	36.8	55.2

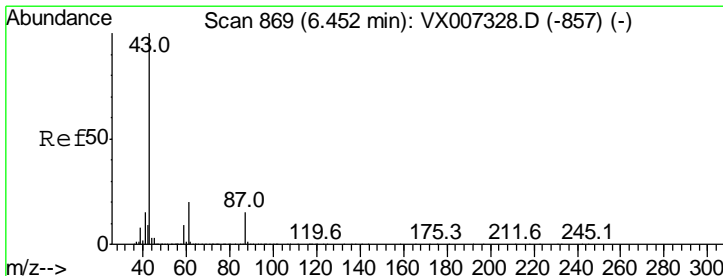
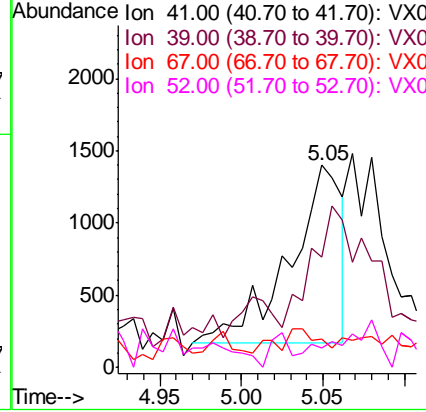
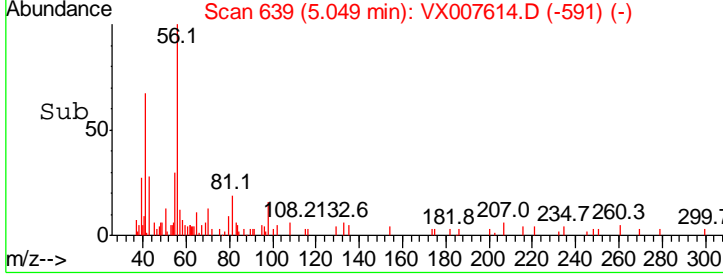
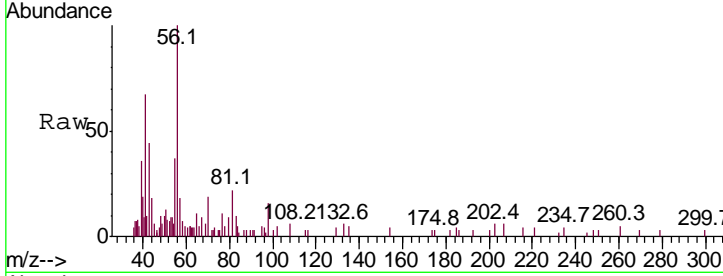




#41
 Methacrylonitrile
 Concen: 0.721 ug/l
 RT: 5.05 min Scan# 639
 Delta R.T. -0.01 min
 Lab File: VX007614.D
 Acq: 19 Feb 2019 15:37

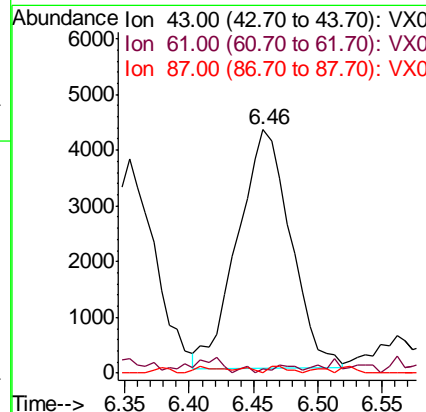
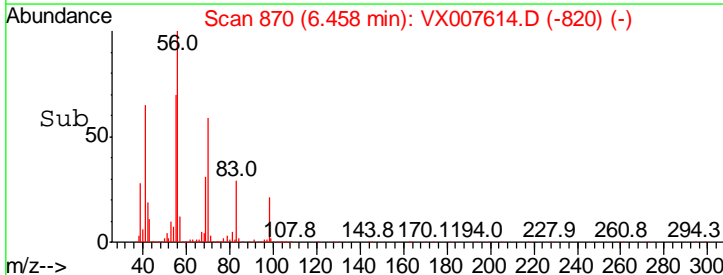
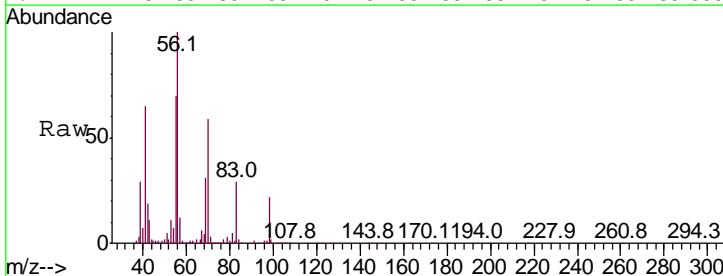
Instrument :
 MSVOA_X
 ClientSampled :
 MW-2DL

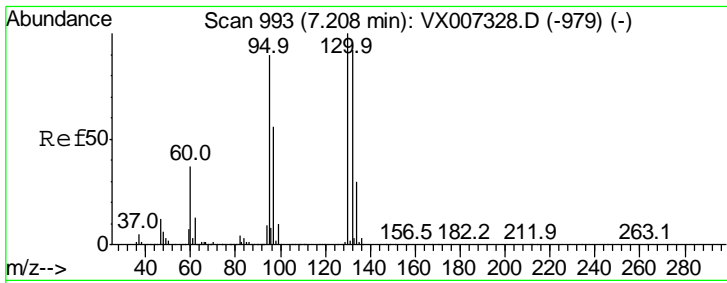
Tgt Ion	Ratio	Lower	Upper
41	100		
39	88.4	44.5	66.7#
67	0.0	60.4	90.6#
52	0.0	24.1	36.1#



#43
 Isopropyl Acetate
 Concen: 1.131 ug/l
 RT: 6.46 min Scan# 870
 Delta R.T. 0.01 min
 Lab File: VX007614.D
 Acq: 19 Feb 2019 15:37

Tgt Ion	Ratio	Lower	Upper
43	100		
61	1.7	16.1	24.1#
87	1.1	11.5	17.3#

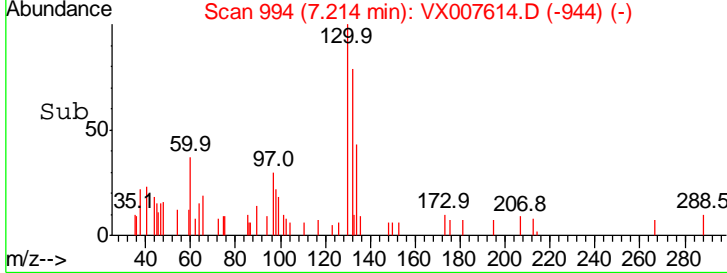
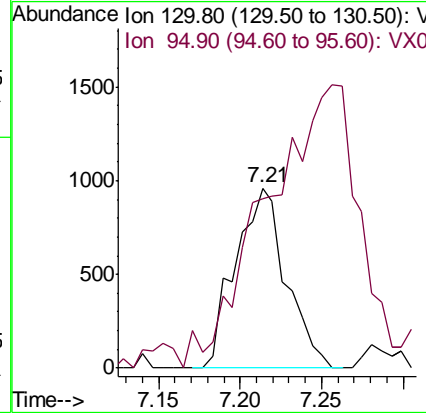
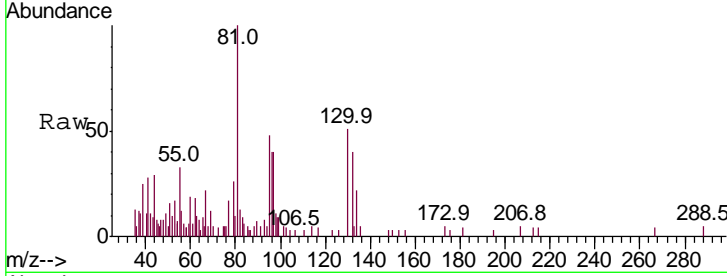




#44
 Trichloroethene
 Concen: 0.339 ug/l
 RT: 7.21 min Scan# 994
 Delta R.T. 0.01 min
 Lab File: VX007614.D
 Acq: 19 Feb 2019 15:37

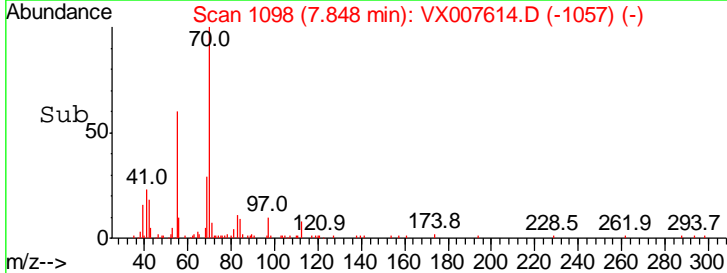
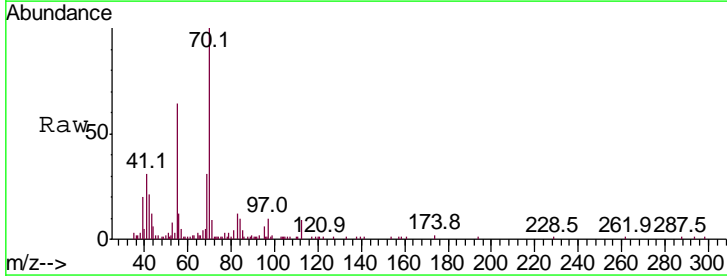
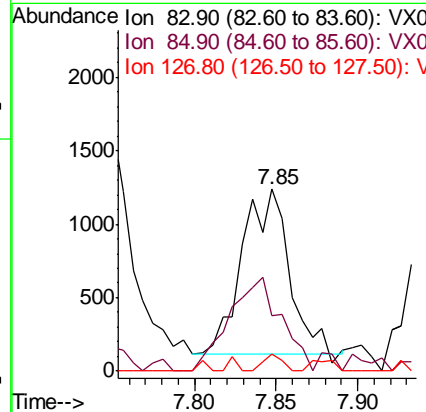
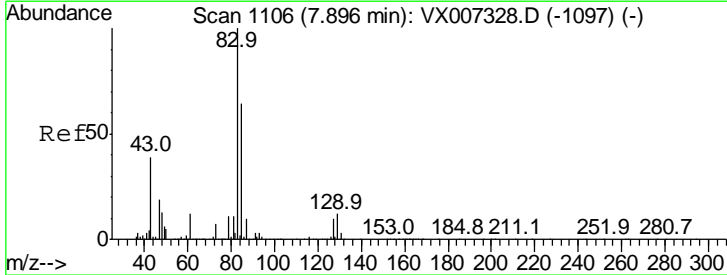
Instrument :
 MSVOA_X
 ClientSampled :
 MW-2DL

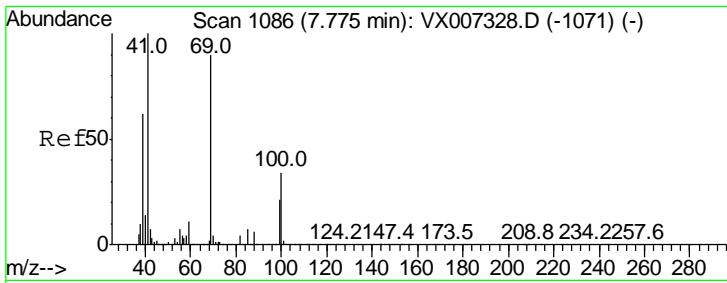
Tgt Ion: 130 Resp: 2089
 Ion Ratio Lower Upper
 130 100
 95 72.8 0.0 180.0



#47
 Bromodichloromethane
 Concen: 0.351 ug/l
 RT: 7.85 min Scan# 1098
 Delta R.T. -0.05 min
 Lab File: VX007614.D
 Acq: 19 Feb 2019 15:37

Tgt Ion: 83 Resp: 2217
 Ion Ratio Lower Upper
 83 100
 85 33.7 51.4 77.0#
 127 10.1 8.1 12.1

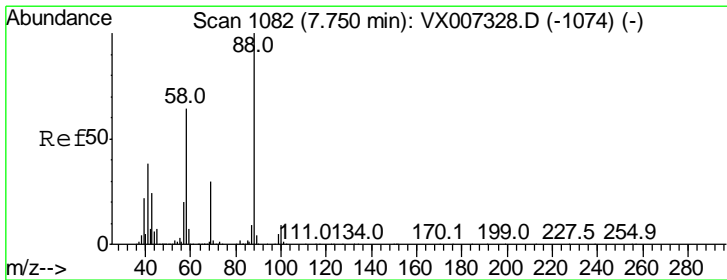
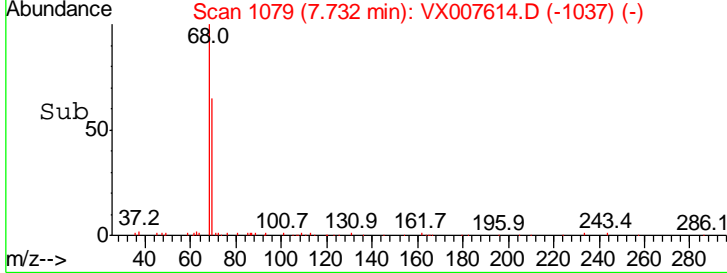
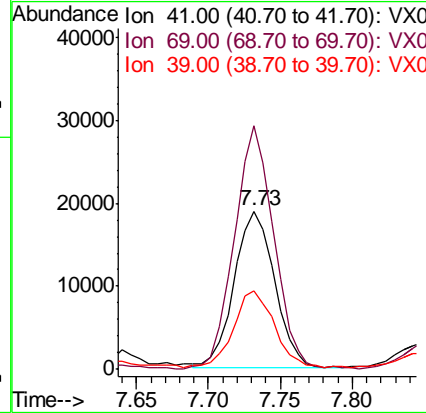
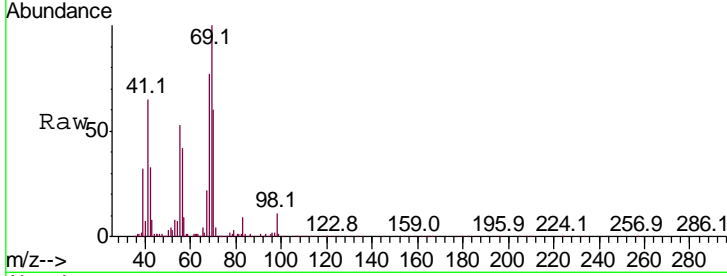




#48
 Methyl methacrylate
 Concen: 6.804 ug/l
 RT: 7.73 min Scan# 1079
 Delta R.T. -0.04 min
 Lab File: VX007614.D
 Acq: 19 Feb 2019 15:37

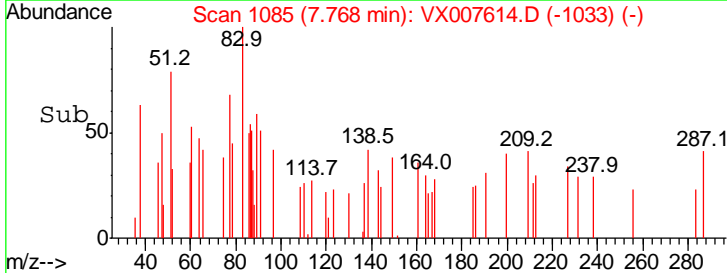
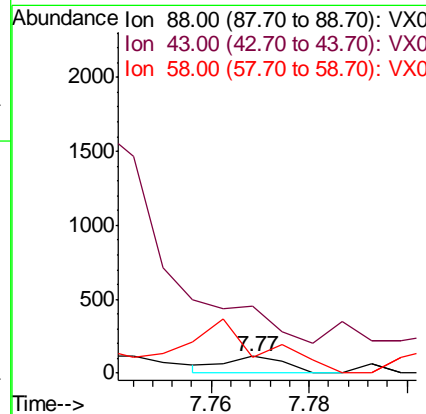
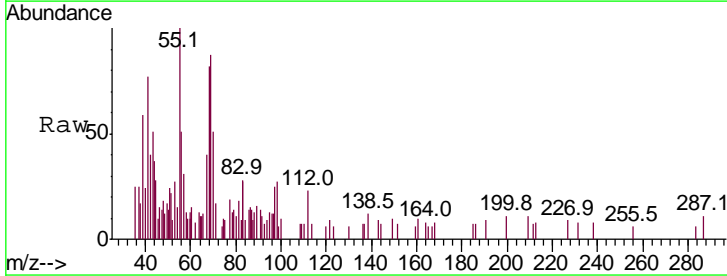
Instrument :
 MSVOA_X
 ClientSampled :
 MW-2DL

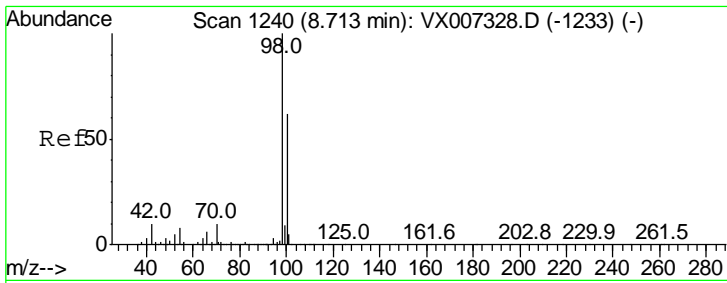
Tgt Ion	Resp	Lower	Upper
41	100		
69	151.3	70.2	105.4#
39	49.7	47.4	71.0



#49
 1,4-Dioxane
 Concen: 7.628 ug/l
 RT: 7.77 min Scan# 1085
 Delta R.T. 0.02 min
 Lab File: VX007614.D
 Acq: 19 Feb 2019 15:37

Tgt Ion	Resp	Lower	Upper
88	100		
43	0.0	24.2	36.4#
58	432.3	53.0	79.4#

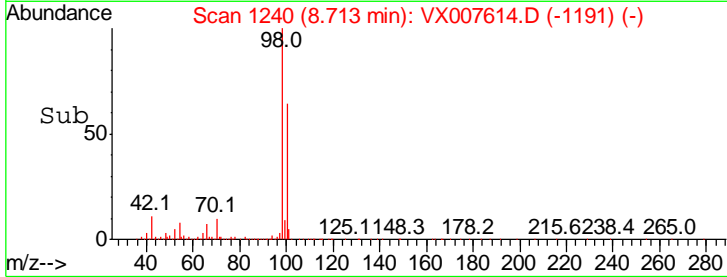
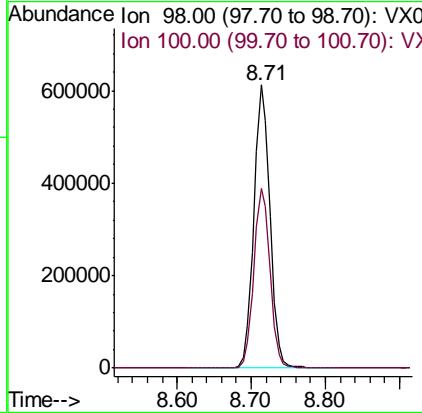
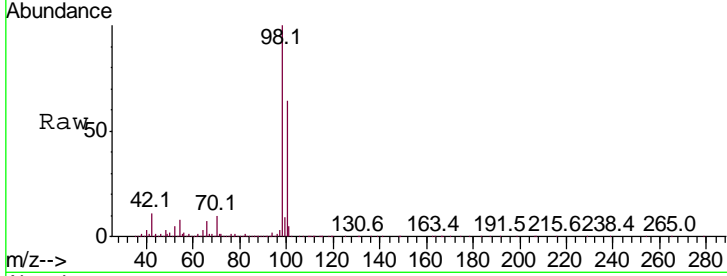




#50
 Toluene-d8
 Concen: 50.053 ug/l
 RT: 8.71 min Scan# 1240
 Delta R.T. 0.00 min
 Lab File: VX007614.D
 Acq: 19 Feb 2019 15:37

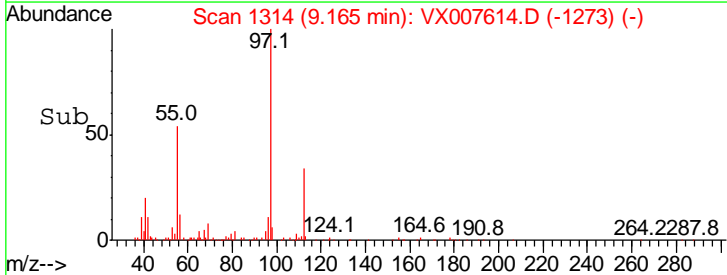
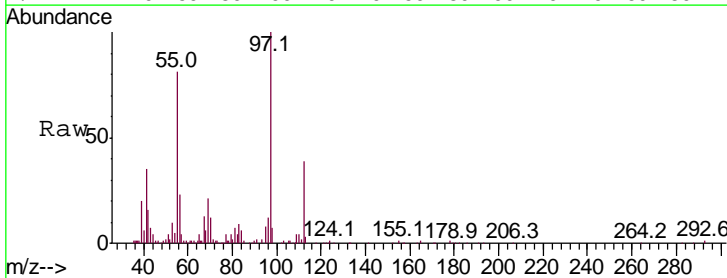
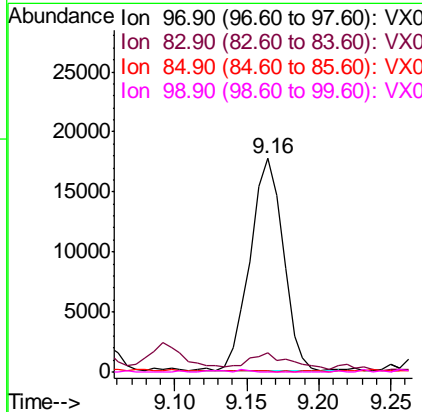
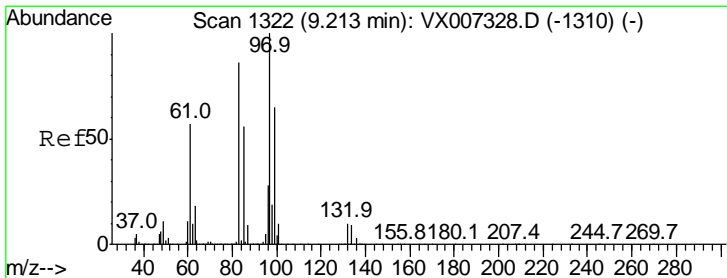
Instrument :
 MSVOA_X
ClientSampled :
 MW-2DL

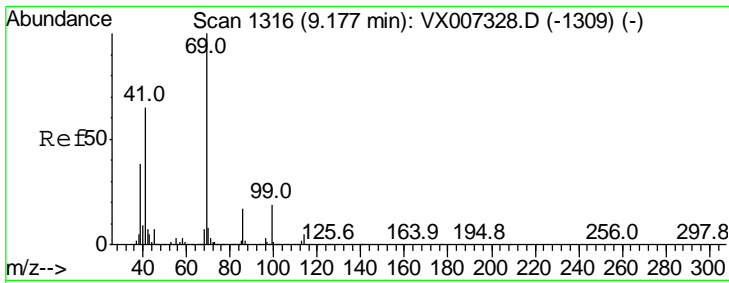
Tgt Ion	Resp	Lower	Upper
98	100		
100	63.8	51.6	77.4



#55
 1,1,2-Trichloroethane
 Concen: 5.171 ug/l
 RT: 9.16 min Scan# 1314
 Delta R.T. -0.05 min
 Lab File: VX007614.D
 Acq: 19 Feb 2019 15:37

Tgt Ion	Resp	Lower	Upper
97	100		
83	6.3	68.6	102.8#
85	0.1	44.5	66.7#
99	0.0	52.2	78.4#

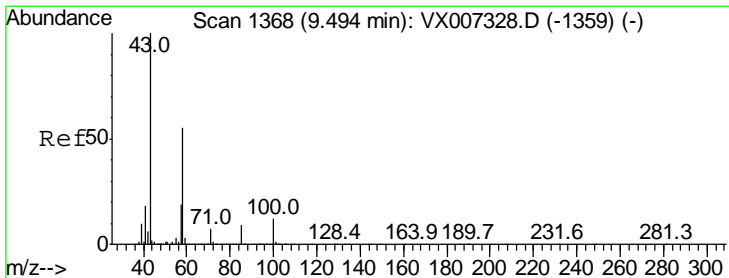
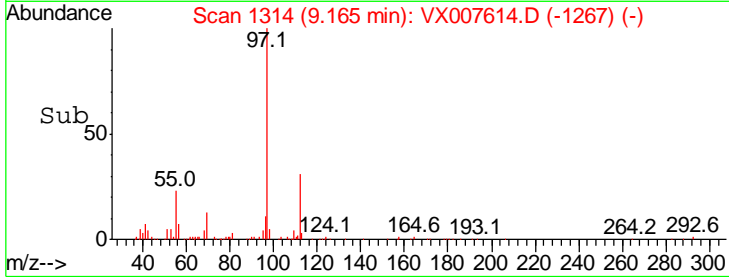
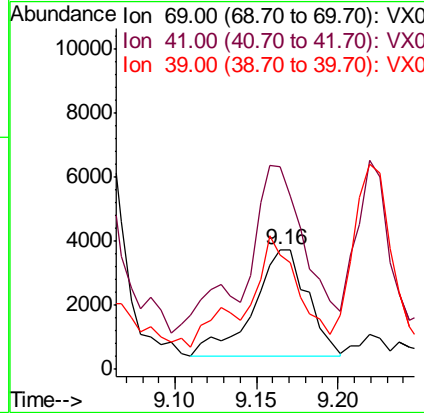
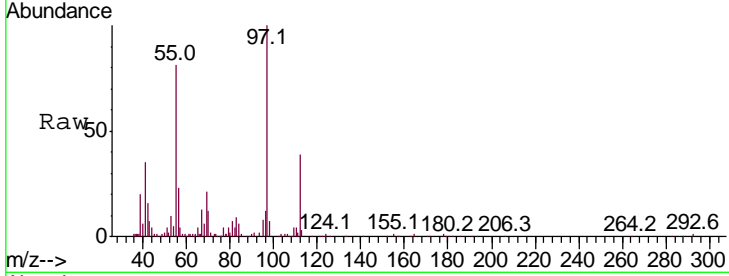




#56
 Ethyl methacrylate
 Concen: 1.017 ug/l
 RT: 9.16 min Scan# 1314
 Delta R.T. -0.01 min
 Lab File: VX007614.D
 Acq: 19 Feb 2019 15:37

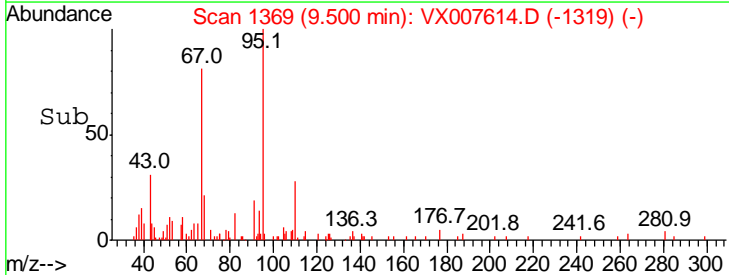
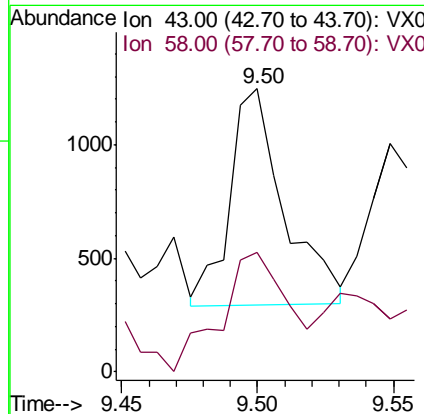
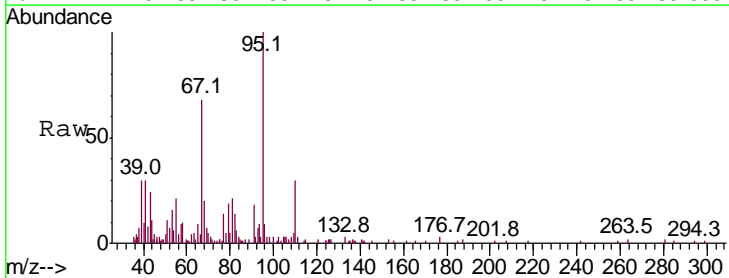
Instrument :
 MSVOA_X
 ClientSampled :
 MW-2DL

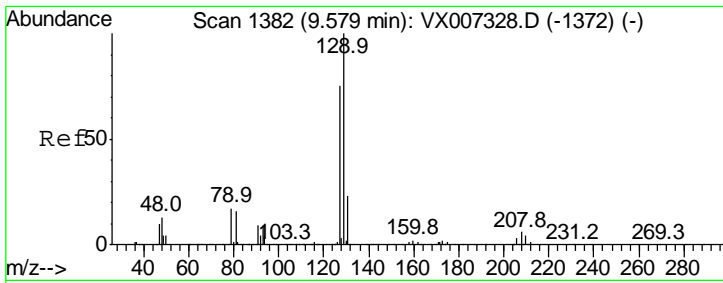
Tgt Ion	Resp	Lower	Upper
69	100		
41	137.2	52.1	78.1#
39	76.8	30.1	45.1#



#59
 2-Hexanone
 Concen: 0.237 ug/l
 RT: 9.50 min Scan# 1369
 Delta R.T. 0.01 min
 Lab File: VX007614.D
 Acq: 19 Feb 2019 15:37

Tgt Ion	Resp	Lower	Upper
43	100		
58	68.0	27.1	81.3

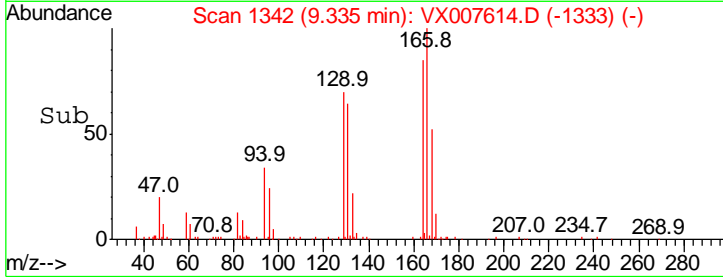
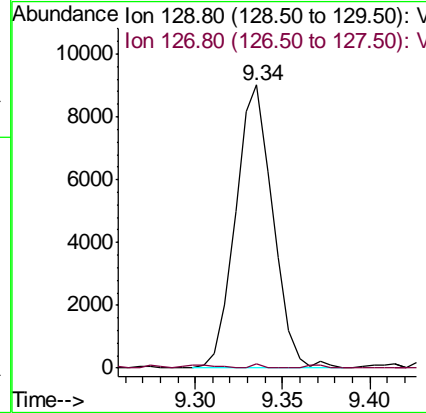
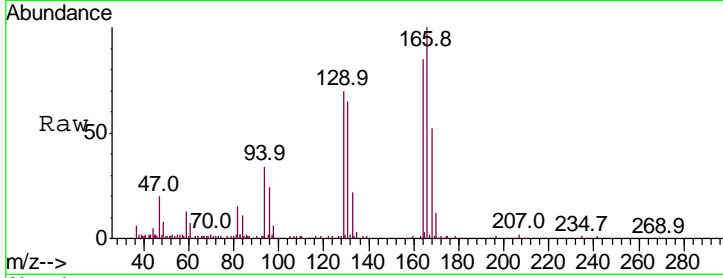




#60
 Dibromochloromethane
 Concen: 2.552 ug/l
 RT: 9.34 min Scan# 1342
 Delta R.T. -0.24 min
 Lab File: VX007614.D
 Acq: 19 Feb 2019 15:37

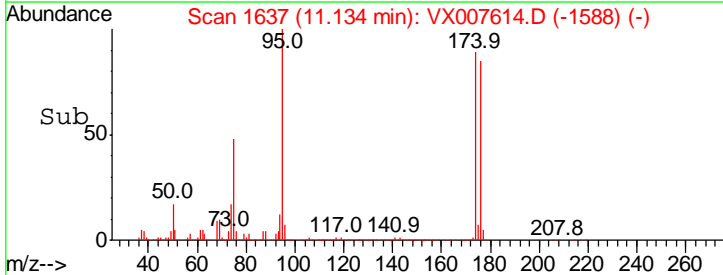
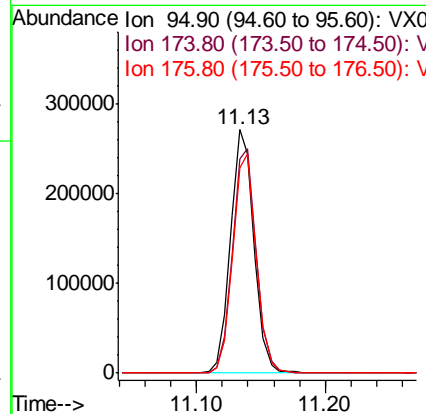
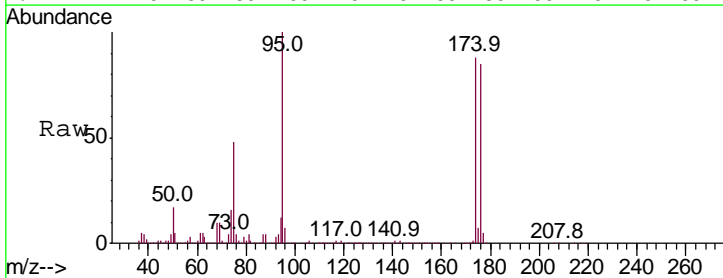
Instrument :
 MSVOA_X
ClientSampled :
 MW-2DL

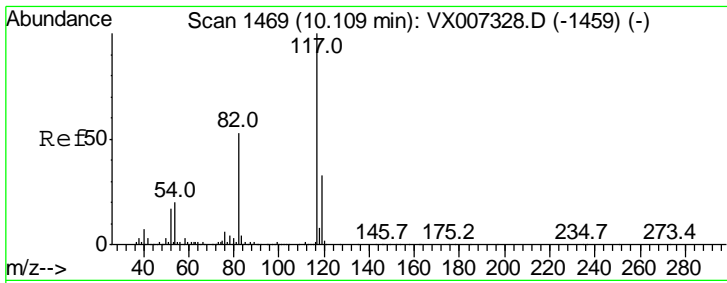
Tgt Ion	Resp	Lower	Upper
129	13278		
127	0.4	37.8	113.4#



#62
 4-Bromofluorobenzene
 Concen: 50.937 ug/l
 RT: 11.13 min Scan# 1637
 Delta R.T. -0.00 min
 Lab File: VX007614.D
 Acq: 19 Feb 2019 15:37

Tgt Ion	Resp	Lower	Upper
95	347473		
174	93.5	0.0	189.2
176	90.4	0.0	186.2

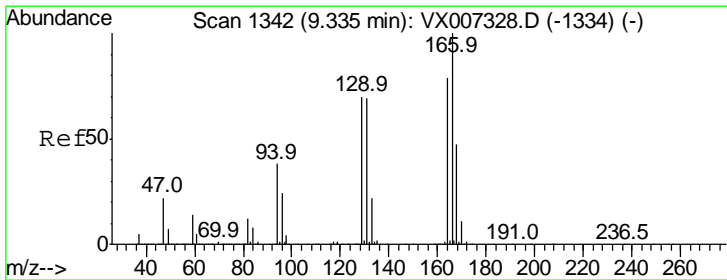
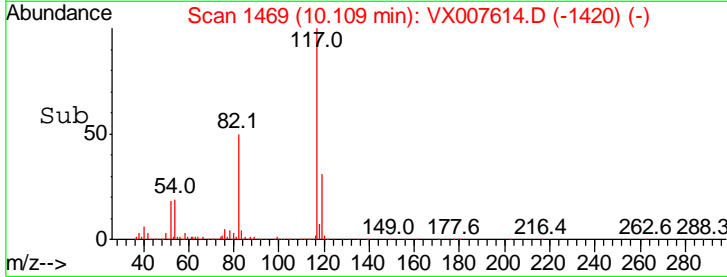
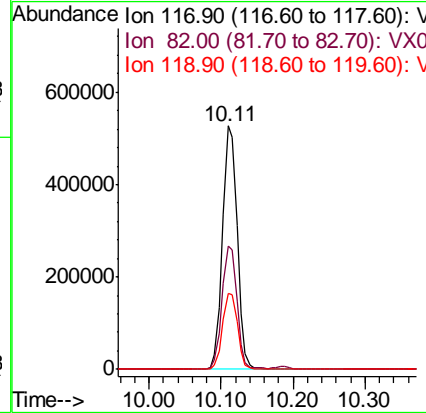
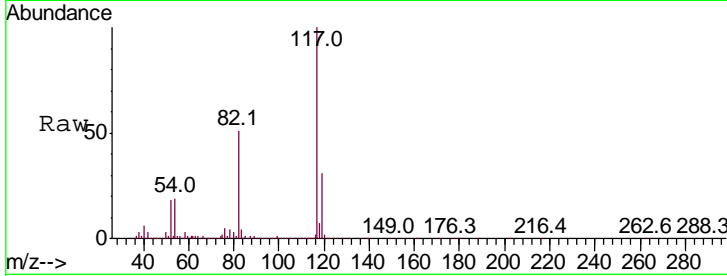




#63
 Chlorobenzene-d5
 Concen: 50.000 ug/l
 RT: 10.11 min Scan# 1469
 Delta R.T. -0.00 min
 Lab File: VX007614.D
 Acq: 19 Feb 2019 15:37

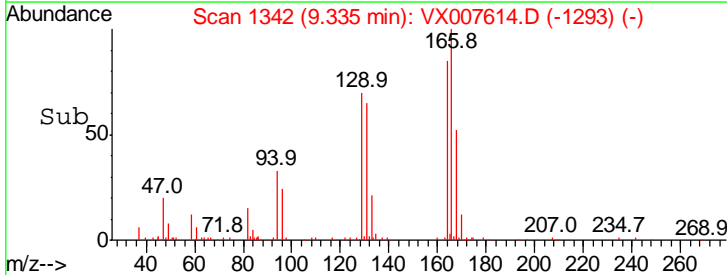
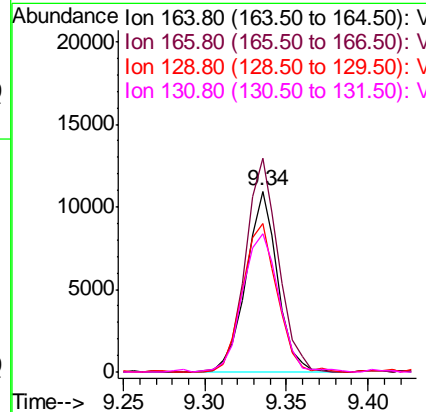
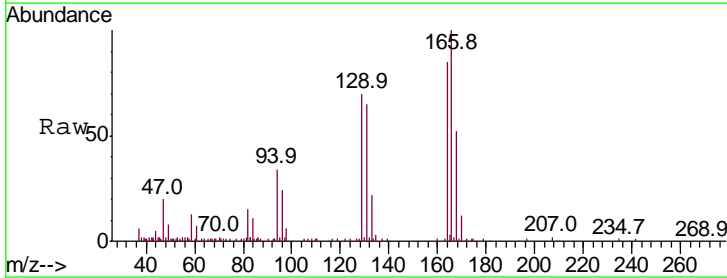
Instrument :
 MSVOA_X
 ClientSampled :
 MW-2DL

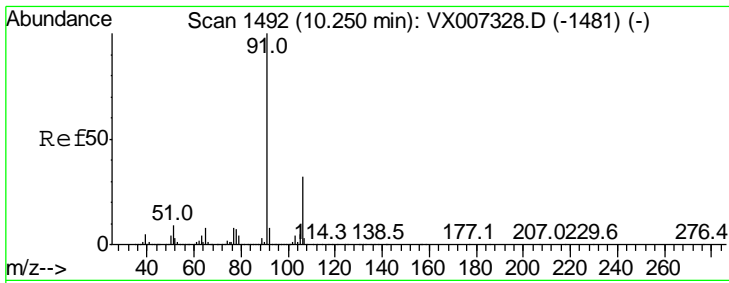
Tgt Ion	Resp	Lower	Upper
117	100		
82	50.6	42.1	63.1
119	30.9	26.5	39.7



#64
 Tetrachloroethene
 Concen: 2.105 ug/l
 RT: 9.34 min Scan# 1342
 Delta R.T. -0.00 min
 Lab File: VX007614.D
 Acq: 19 Feb 2019 15:37

Tgt Ion	Resp	Lower	Upper
164	100		
166	118.1	101.0	151.4
129	82.2	70.5	105.7
131	76.5	69.8	104.6

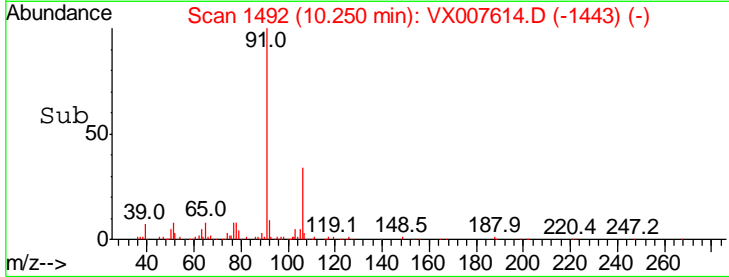
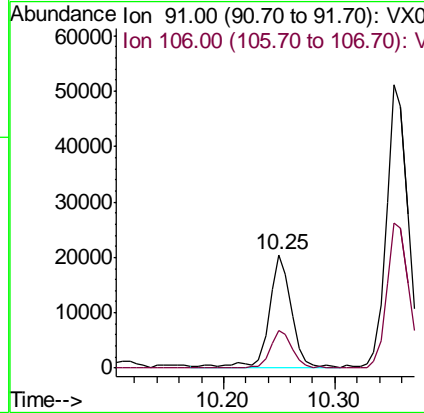
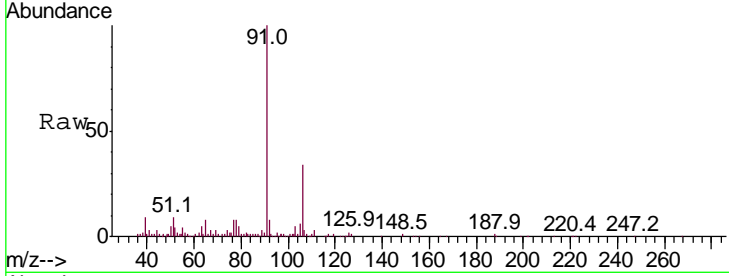




#67
 Ethyl Benzene
 Concen: 1.093 ug/l
 RT: 10.25 min Scan# 1492
 Delta R.T. -0.00 min
 Lab File: VX007614.D
 Acq: 19 Feb 2019 15:37

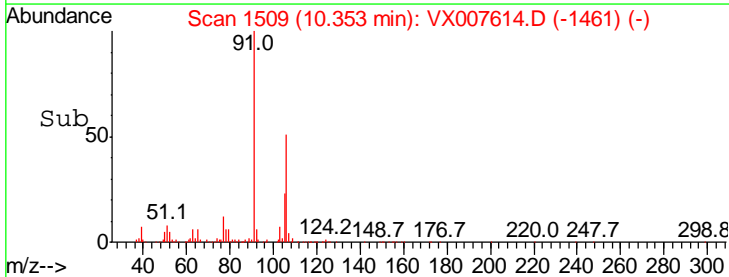
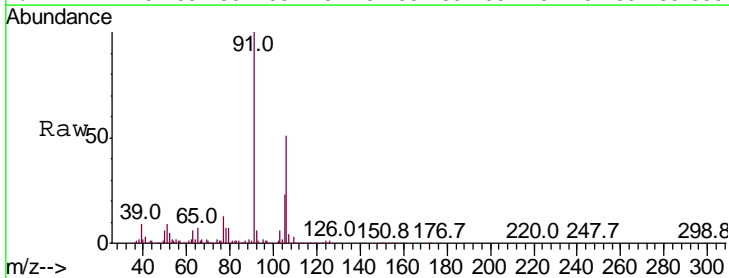
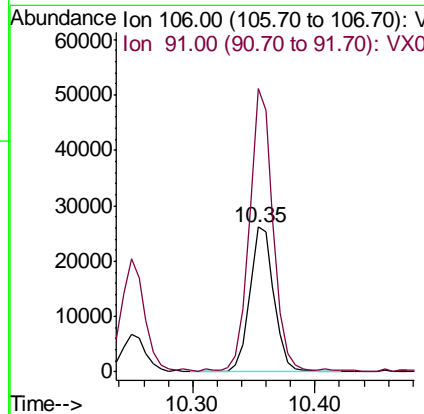
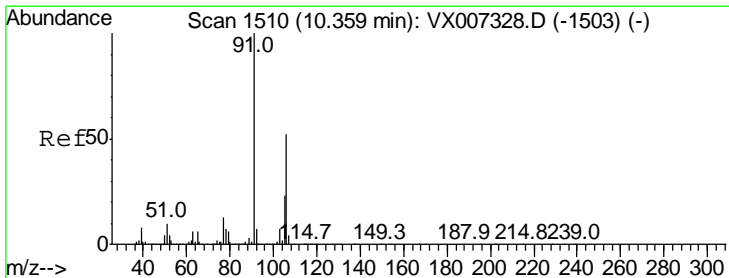
Instrument :
 MSVOA_X
 ClientSampled :
 MW-2DL

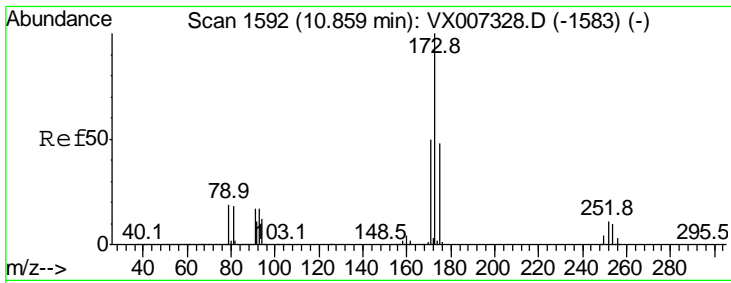
Tgt Ion: 91 Resp: 28452
 Ion Ratio Lower Upper
 91 100
 106 32.9 25.4 38.0



#68
 m/p-Xylenes
 Concen: 3.502 ug/l
 RT: 10.35 min Scan# 1509
 Delta R.T. -0.01 min
 Lab File: VX007614.D
 Acq: 19 Feb 2019 15:37

Tgt Ion: 106 Resp: 36231
 Ion Ratio Lower Upper
 106 100
 91 188.5 156.6 234.8

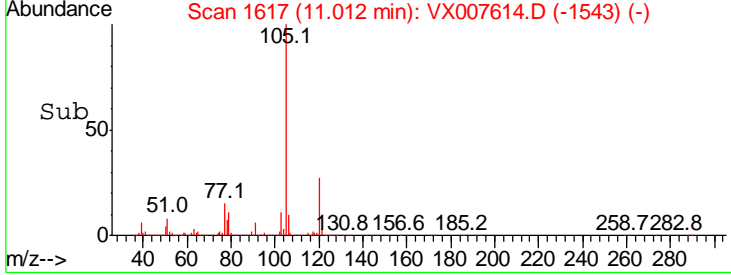
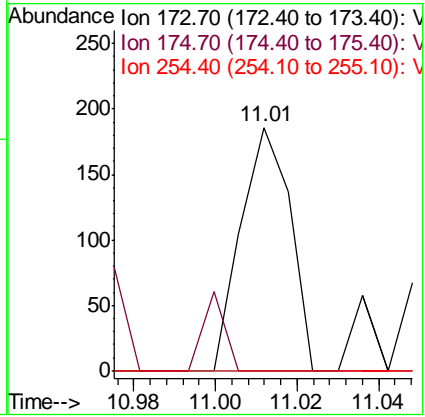
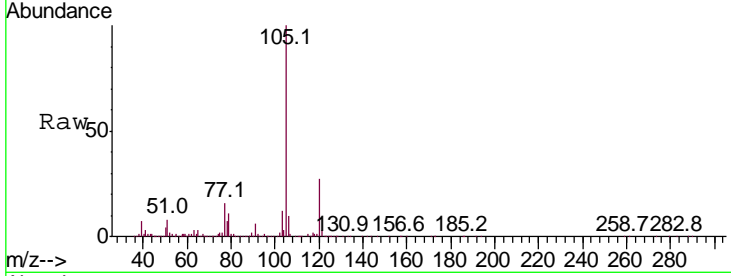




#71
 Bromoform
 Concen: 4.060 ug/l
 RT: 11.01 min Scan# 1617
 Delta R.T. 0.15 min
 Lab File: VX007614.D
 Acq: 19 Feb 2019 15:37

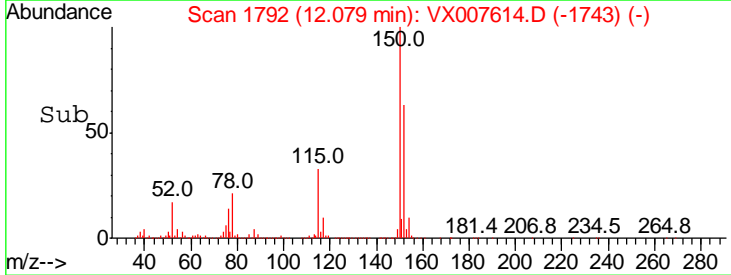
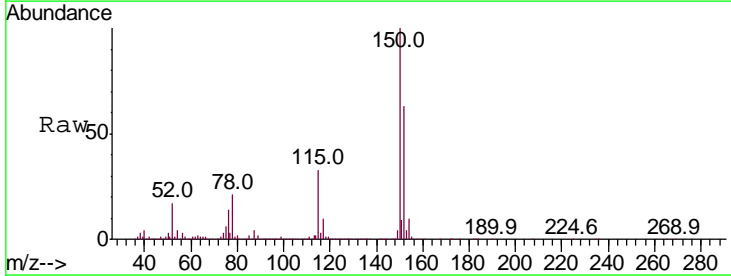
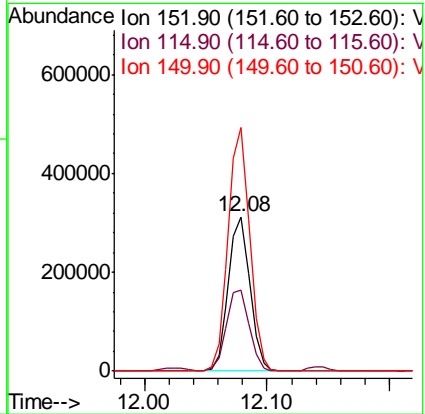
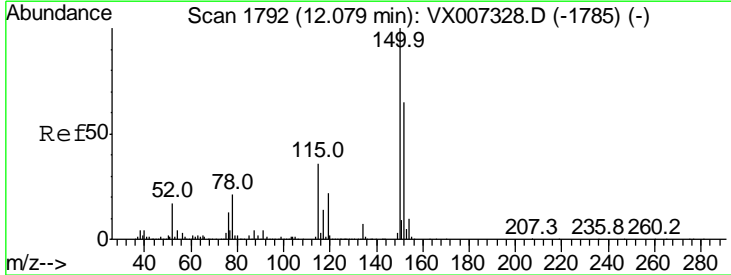
Instrument : MSVOA_X
 ClientSampled : MW-2DL

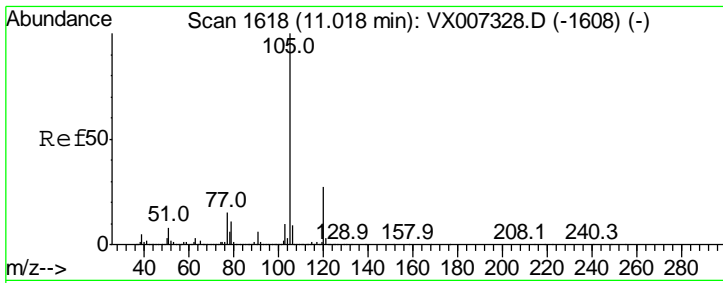
Tgt Ion	Ratio	Lower	Upper
173	100		
175	0.0	24.2	72.6#
254	0.0	0.2	0.2#



#72
 1,4-Dichlorobenzene-d4
 Concen: 50.000 ug/l
 RT: 12.08 min Scan# 1792
 Delta R.T. 0.00 min
 Lab File: VX007614.D
 Acq: 19 Feb 2019 15:37

Tgt Ion	Ratio	Lower	Upper
152	100		
115	56.0	38.0	114.0
150	157.6	0.0	346.4

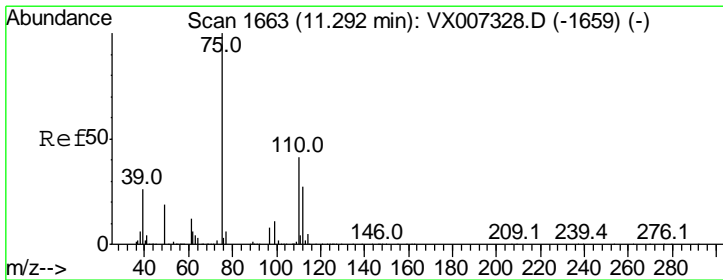
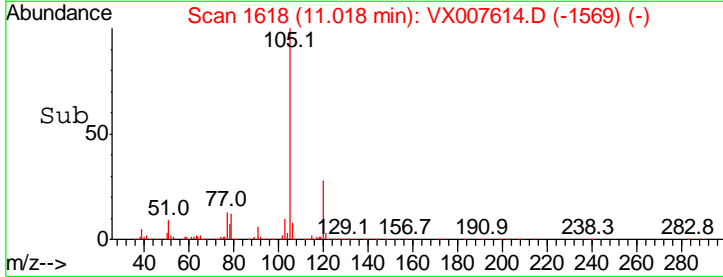
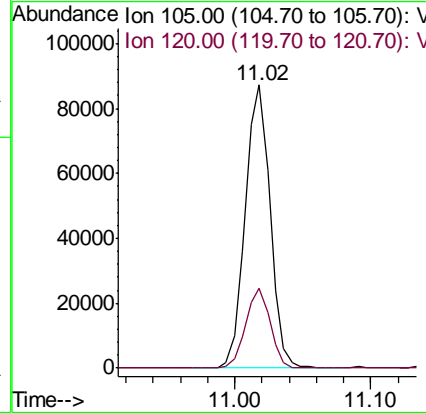
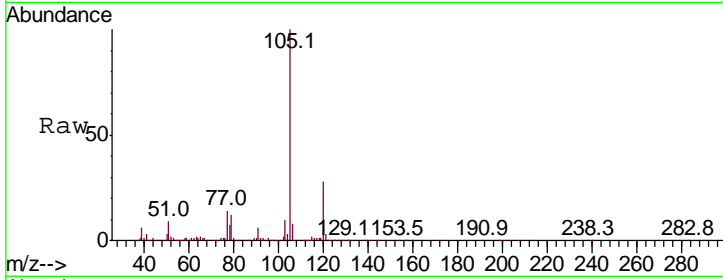




#73
 Isopropylbenzene
 Concen: 4.287 ug/l
 RT: 11.02 min Scan# 1618
 Delta R.T. 0.00 min
 Lab File: VX007614.D
 Acq: 19 Feb 2019 15:37

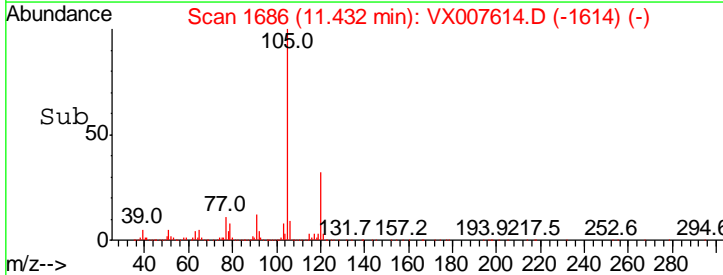
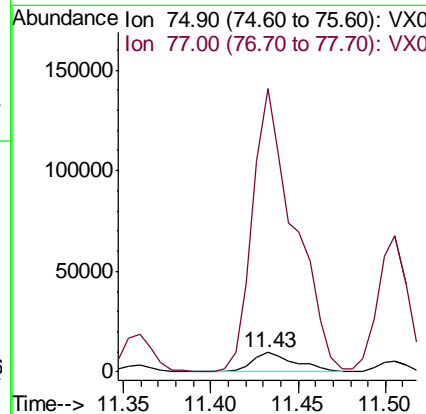
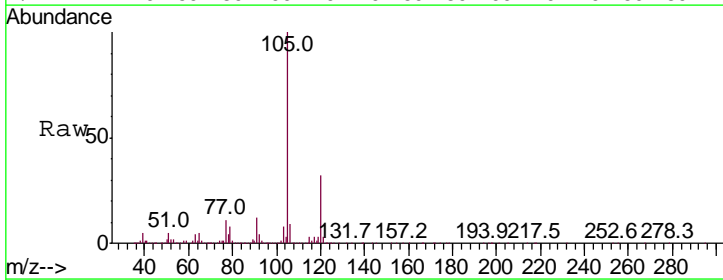
Instrument :
 MSVOA_X
 Client Sampled :
 MW-2DL

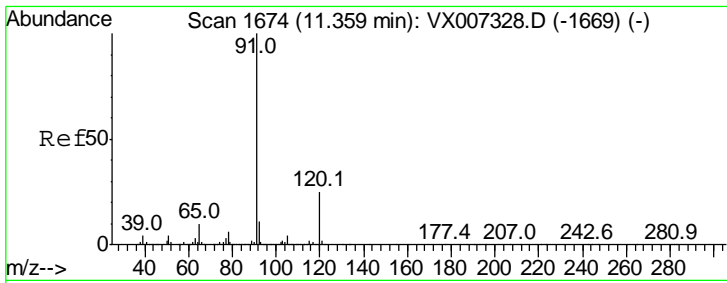
Tgt Ion: 105 Resp: 110839
 Ion Ratio Lower Upper
 105 100
 120 27.7 13.6 40.7



#76
 1,2,3-Trichloropropane
 Concen: 2.217 ug/l
 RT: 11.43 min Scan# 1686
 Delta R.T. 0.14 min
 Lab File: VX007614.D
 Acq: 19 Feb 2019 15:37

Tgt Ion: 75 Resp: 16408
 Ion Ratio Lower Upper
 75 100
 77 1432.1 23.0 69.0#

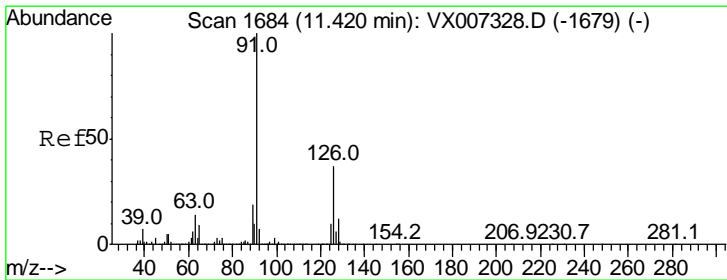
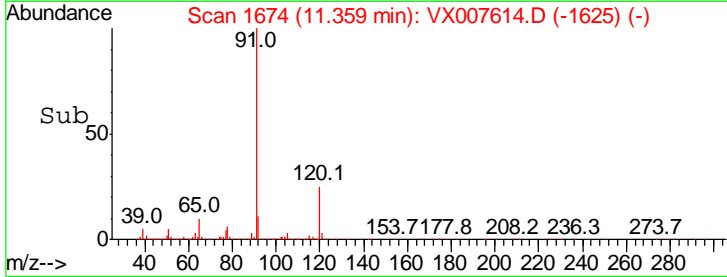
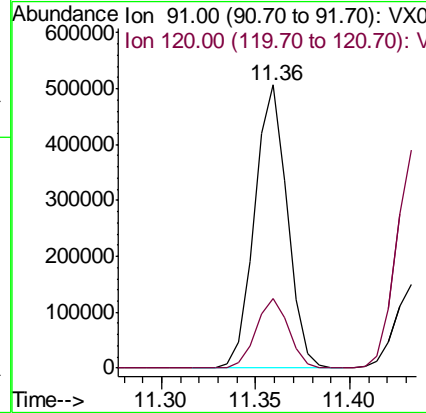
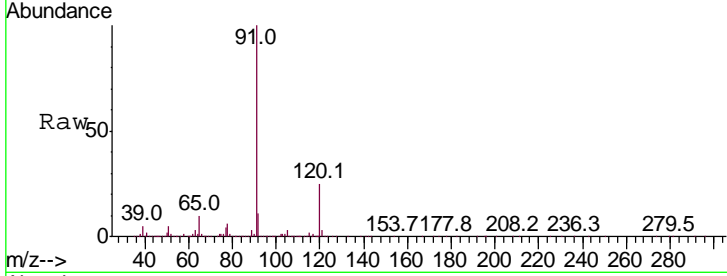




#78
 n-propylbenzene
 Concen: 21.482 ug/l
 RT: 11.36 min Scan# 1674
 Delta R.T. 0.00 min
 Lab File: VX007614.D
 Acq: 19 Feb 2019 15:37

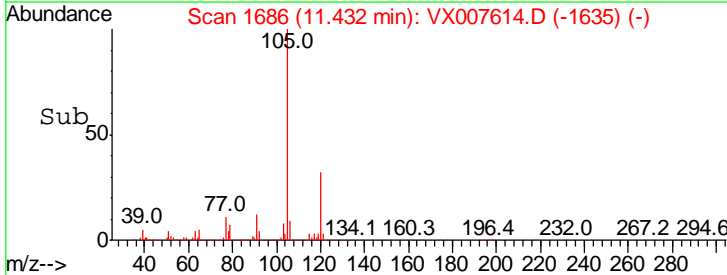
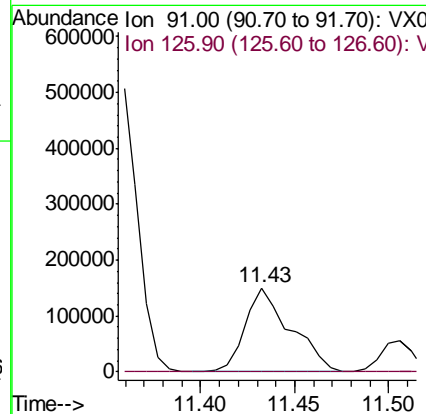
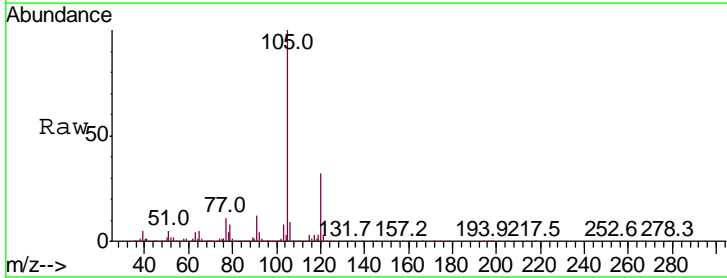
Instrument :
 MSVOA_X
 ClientSampled :
 MW-2DL

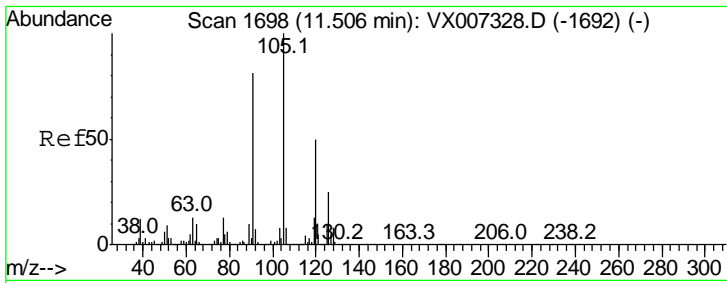
Tgt Ion: 91 Resp: 609047
 Ion Ratio Lower Upper
 91 100
 120 24.6 12.4 37.2



#79
 2-Chlorotoluene
 Concen: 14.618 ug/l
 RT: 11.43 min Scan# 1686
 Delta R.T. 0.01 min
 Lab File: VX007614.D
 Acq: 19 Feb 2019 15:37

Tgt Ion: 91 Resp: 251480
 Ion Ratio Lower Upper
 91 100
 126 0.4 18.7 56.1#

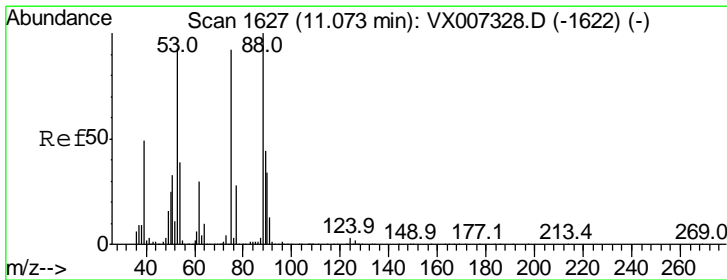
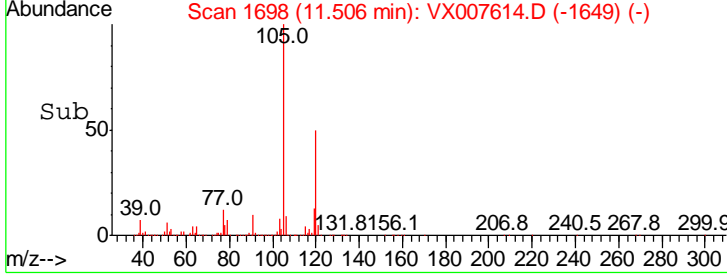
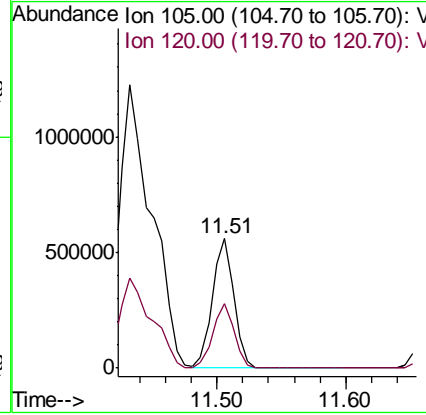
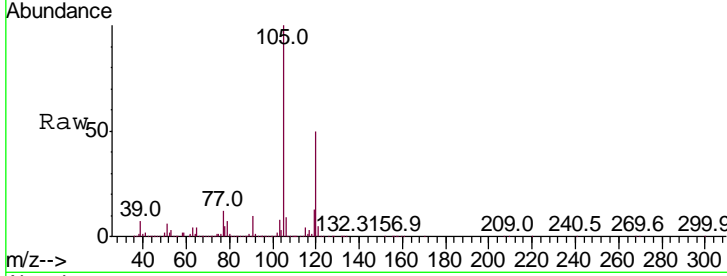




#80
 1,3,5-Trimethylbenzene
 Concen: 31.121 ug/l
 RT: 11.51 min Scan# 1698
 Delta R.T. 0.00 min
 Lab File: VX007614.D
 Acq: 19 Feb 2019 15:37

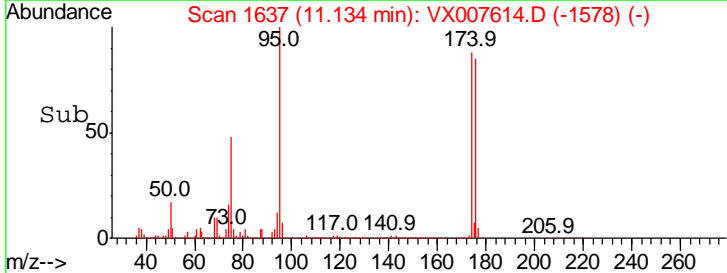
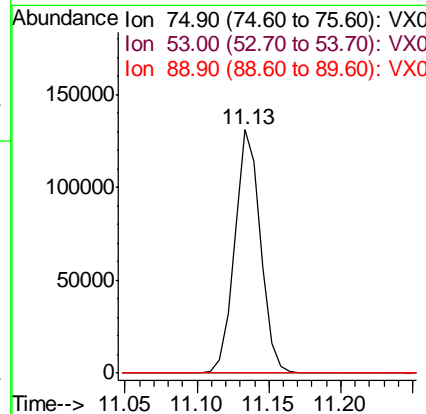
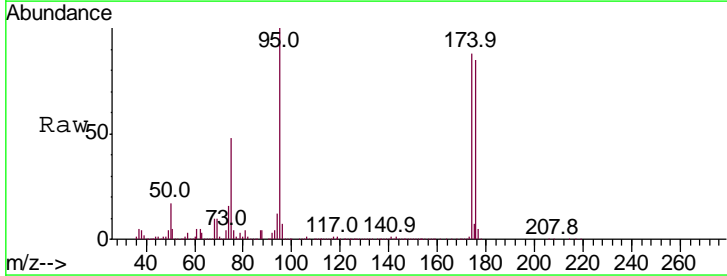
Instrument :
 MSVOA_X
 Client Sampled :
 MW-2DL

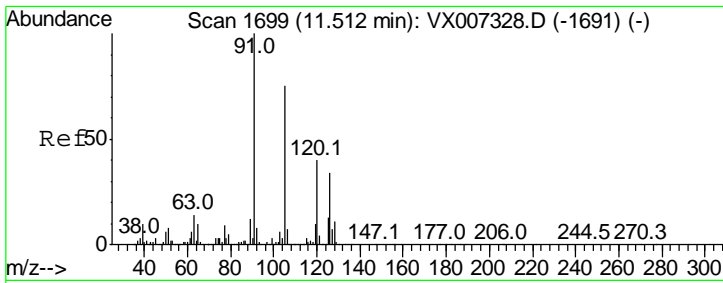
Tgt Ion	Resp	Lower	Upper
105	100		
120	49.2	25.3	75.8



#81
 trans-1,4-Dichloro-2-butene
 Concen: 67.252 ug/l
 RT: 11.13 min Scan# 1637
 Delta R.T. 0.06 min
 Lab File: VX007614.D
 Acq: 19 Feb 2019 15:37

Tgt Ion	Resp	Lower	Upper
75	100		
53	0.1	81.0	121.6#
89	0.0	41.4	62.0#

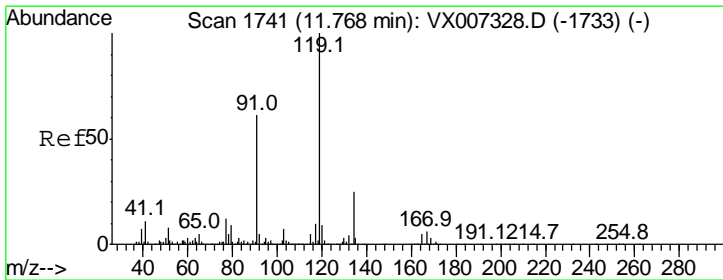
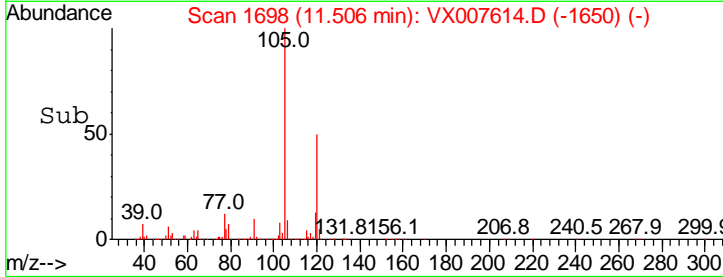
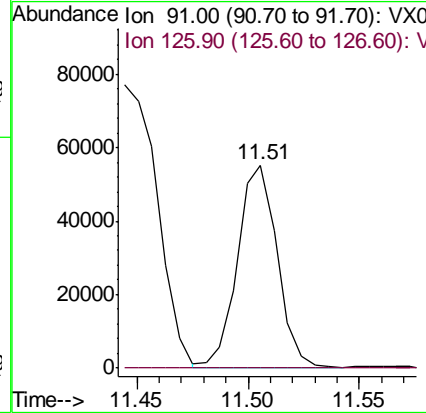
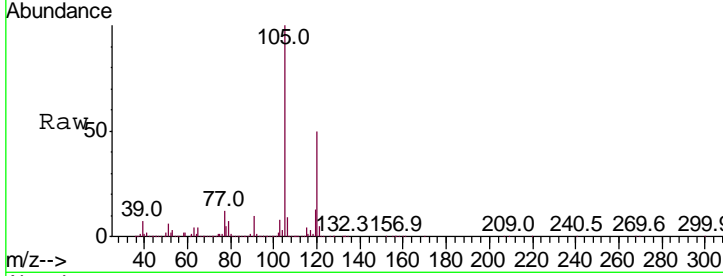




#82
 4-Chlorotoluene
 Concen: 3.414 ug/l
 RT: 11.51 min Scan# 1698
 Delta R.T. -0.01 min
 Lab File: VX007614.D
 Acq: 19 Feb 2019 15:37

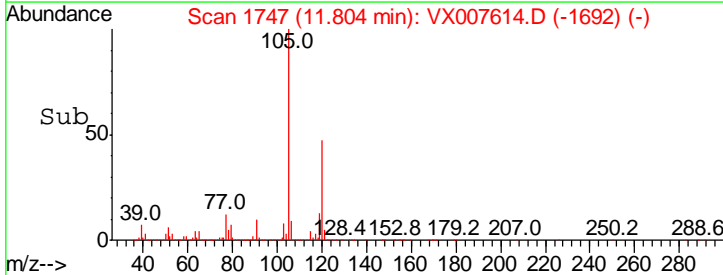
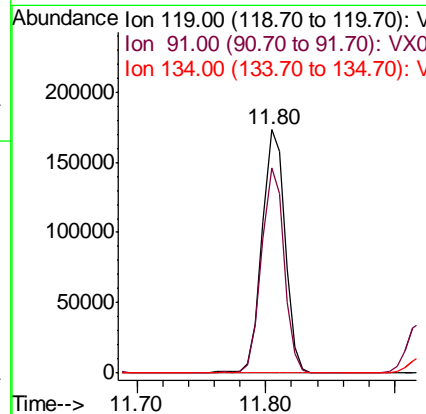
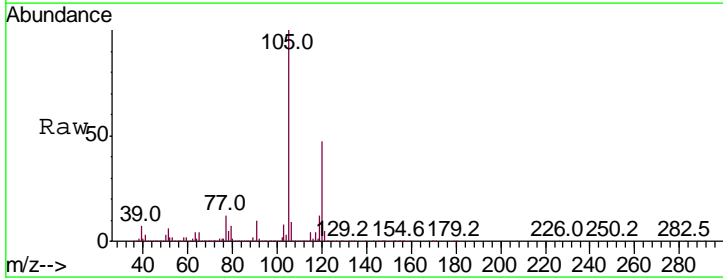
Instrument :
 MSVOA_X
 ClientSampled :
 MW-2DL

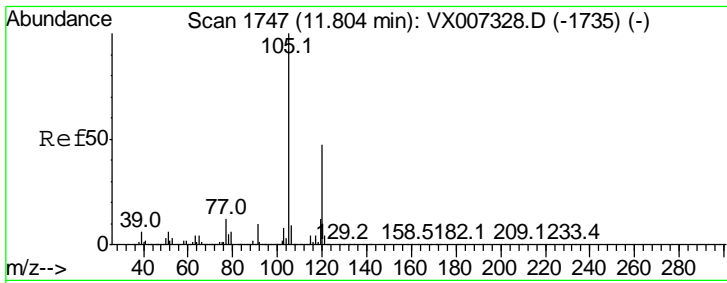
Tgt Ion	Resp	Lower	Upper
91	67959		
126	0.3	16.2	48.5#



#83
 tert-Butylbenzene
 Concen: 10.170 ug/l
 RT: 11.80 min Scan# 1747
 Delta R.T. 0.04 min
 Lab File: VX007614.D
 Acq: 19 Feb 2019 15:37

Tgt Ion	Resp	Lower	Upper
119	212975		
91	82.4	28.5	85.6
134	0.0	12.0	36.0#



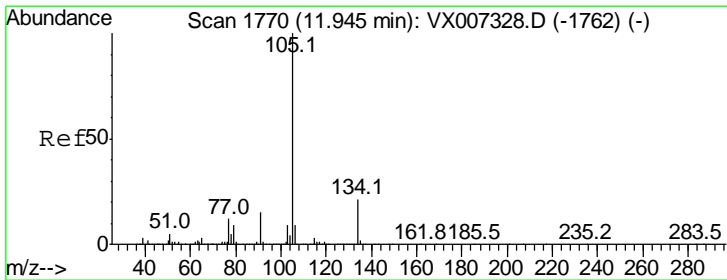
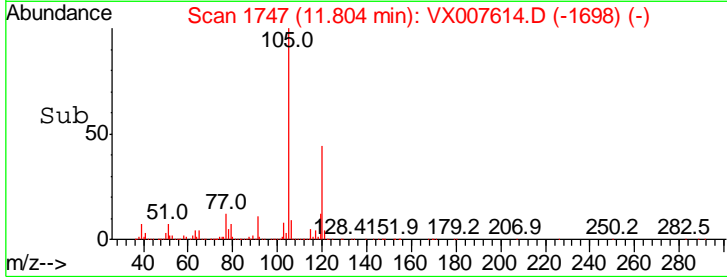
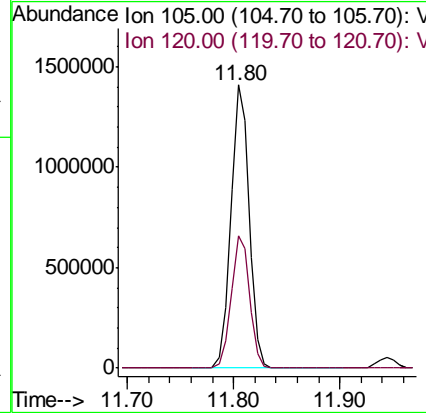
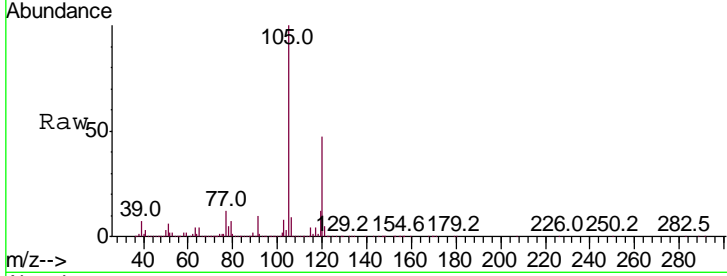


#84
 1,2,4-Trimethylbenzene
 Concen: 78.634 ug/l
 RT: 11.80 min Scan# 1747
 Delta R.T. -0.00 min
 Lab File: VX007614.D
 Acq: 19 Feb 2019 15:37

Instrument :
 MSVOA_X
 ClientSampled :
 MW-2DL

Tgt Ion:105 Resp: 1688633

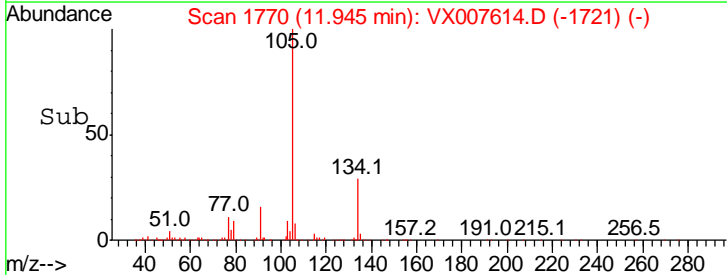
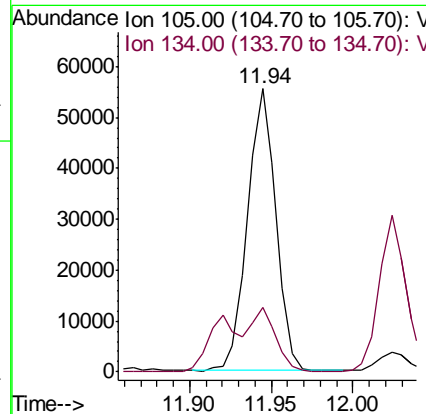
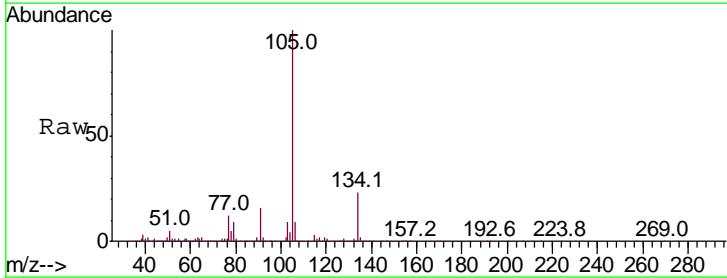
Ion	Ratio	Lower	Upper
105	100		
120	47.2	23.1	69.3

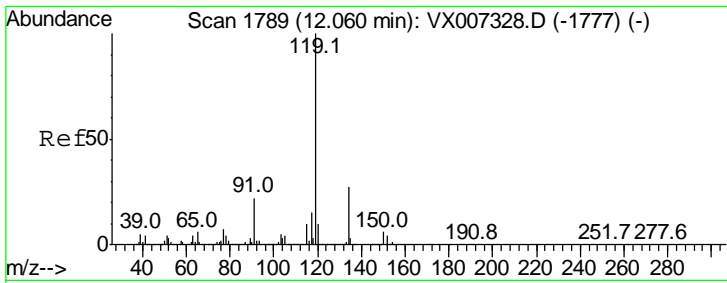


#85
 sec-Butylbenzene
 Concen: 2.656 ug/l
 RT: 11.94 min Scan# 1770
 Delta R.T. -0.00 min
 Lab File: VX007614.D
 Acq: 19 Feb 2019 15:37

Tgt Ion:105 Resp: 67329

Ion	Ratio	Lower	Upper
105	100		
134	20.1	10.6	31.8

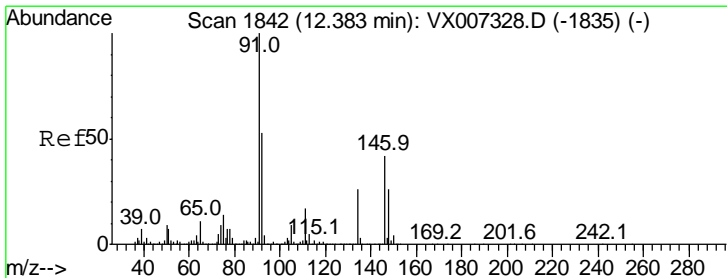
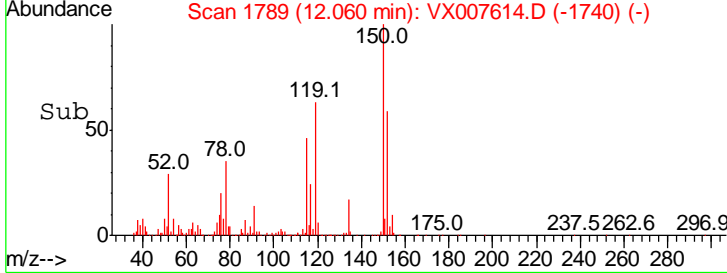
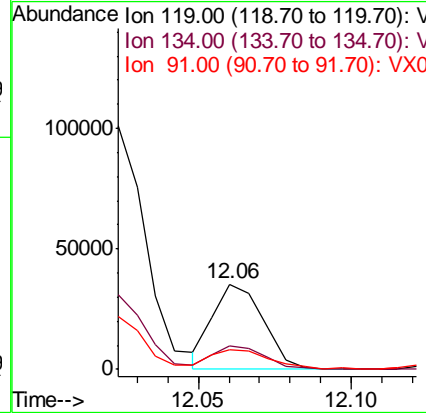
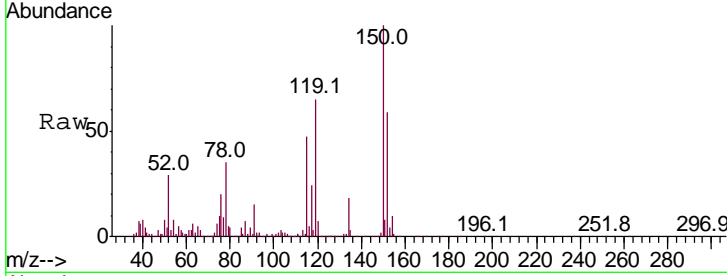




#86
 p-Isopropyltoluene
 Concen: 1.742 ug/l
 RT: 12.06 min Scan# 1789
 Delta R.T. -0.00 min
 Lab File: VX007614.D
 Acq: 19 Feb 2019 15:37

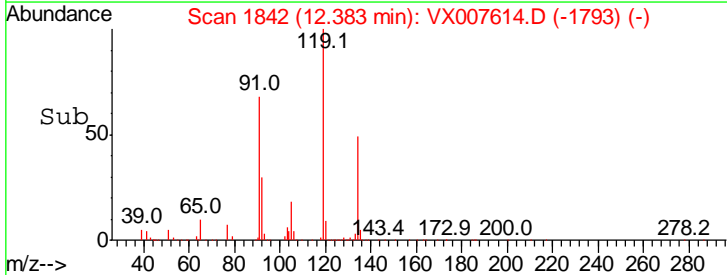
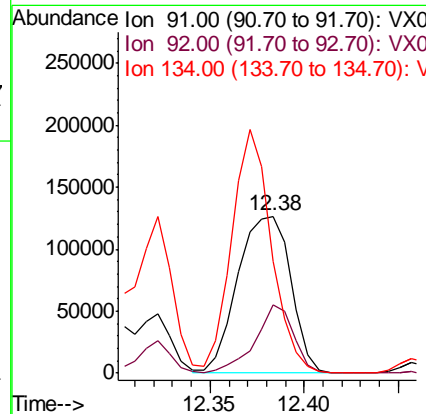
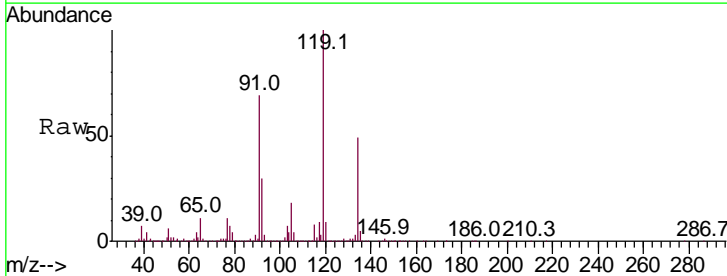
Instrument :
 MSVOA_X
 ClientSampled :
 MW-2DL

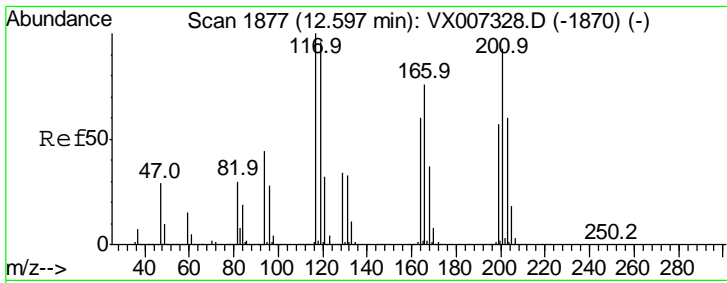
Tgt Ion	Resp	Lower	Upper
119	100		
134	28.5	13.7	41.1
91	28.4	11.2	33.5



#89
 n-Butylbenzene
 Concen: 12.501 ug/l
 RT: 12.38 min Scan# 1842
 Delta R.T. -0.00 min
 Lab File: VX007614.D
 Acq: 19 Feb 2019 15:37

Tgt Ion	Resp	Lower	Upper
91	100		
92	31.6	26.3	78.9
134	116.0	13.9	41.6#

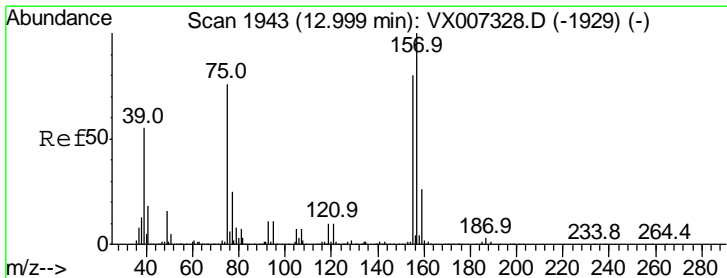
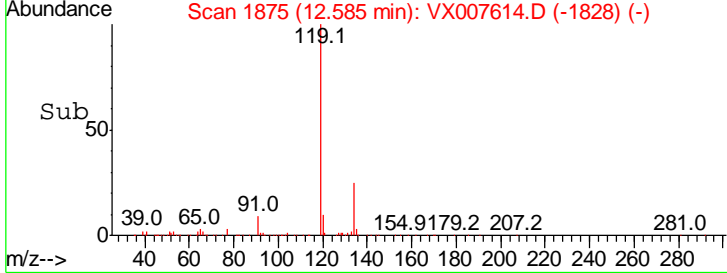
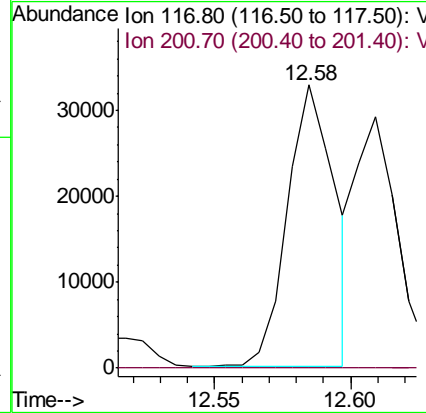
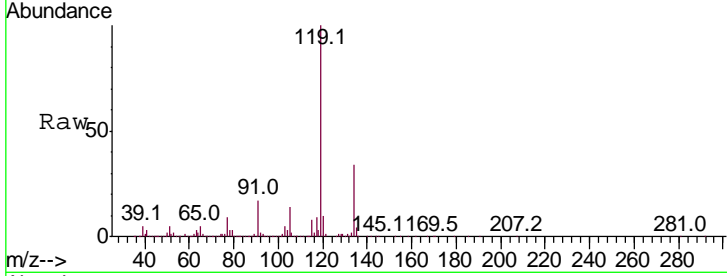




#90
 Hexachloroethane
 Concen: 11.631 ug/l
 RT: 12.58 min Scan# 1875
 Delta R.T. -0.01 min
 Lab File: VX007614.D
 Acq: 19 Feb 2019 15:37

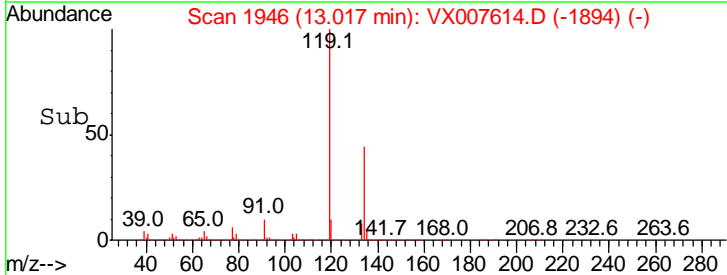
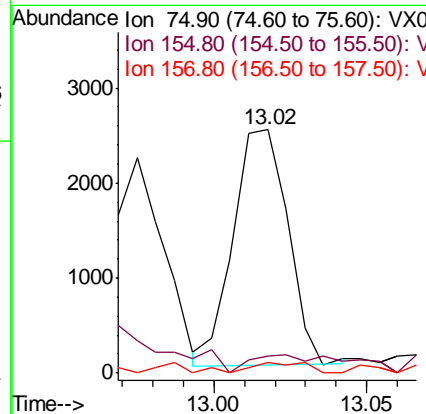
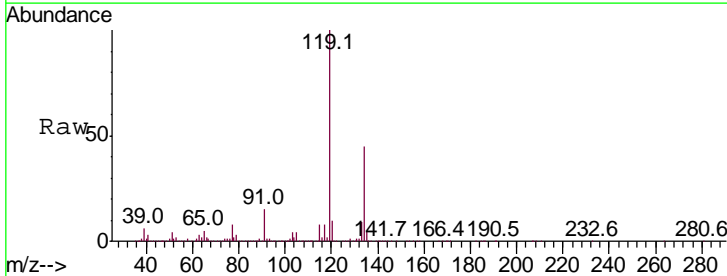
Instrument :
 MSVOA_X
 ClientSampled :
 MW-2DL

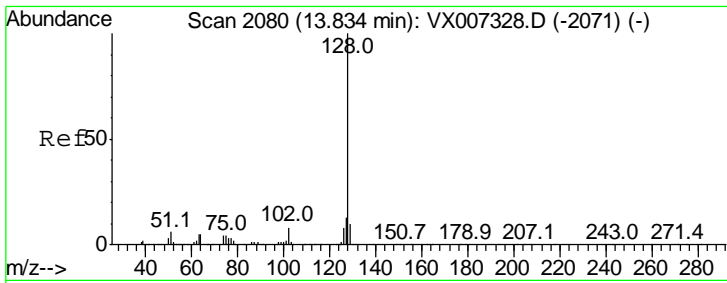
Tgt Ion: 117 Resp: 39830
 Ion Ratio Lower Upper
 117 100
 201 0.0 44.9 134.7#



#92
 1,2-Dibromo-3-Chloropropane
 Concen: 1.881 ug/l
 RT: 13.02 min Scan# 1946
 Delta R.T. 0.02 min
 Lab File: VX007614.D
 Acq: 19 Feb 2019 15:37

Tgt Ion: 75 Resp: 3081
 Ion Ratio Lower Upper
 75 100
 155 14.2 49.6 149.0#
 157 4.5 65.1 195.3#





#95
 Naphthalene
 Concen: 1.842 ug/l
 RT: 13.83 min Scan# 2080
 Delta R.T. 0.00 min
 Lab File: VX007614.D
 Acq: 19 Feb 2019 15:37

Instrument :
 MSVOA_X
 ClientSampled :
 MW-2DL

Tot Ion:128 Resp: 47259

Ion	Ratio	Lower	Upper
128	100		
127	14.8	10.5	15.7
129	15.8	8.7	13.1#

