

Data Path : Z:\voasrv\HPCHEM1\MSVOA\_X\Data\VX021924\  
 Data File : VX040323.D  
 Acq On : 19 Feb 2024 12:22  
 Operator : JC/MD  
 Sample : P1395-01 10X  
 Misc : 4.42g/5.0mL/100uL/5.0mL/MSVOA\_X/MEOH  
 ALS Vial : 7 Sample Multiplier: 1

Instrument :  
 MSVOA\_X  
 ClientSampleId :  
 B-4(4-6)

Quant Time: Feb 20 01:12:16 2024  
 Quant Method : Z:\voasrv\HPCHEM1\MSVOA\_X\Method\82X020924W.M  
 Quant Title : SW846 8260  
 QLast Update : Mon Feb 12 00:21:14 2024  
 Response via : Initial Calibration

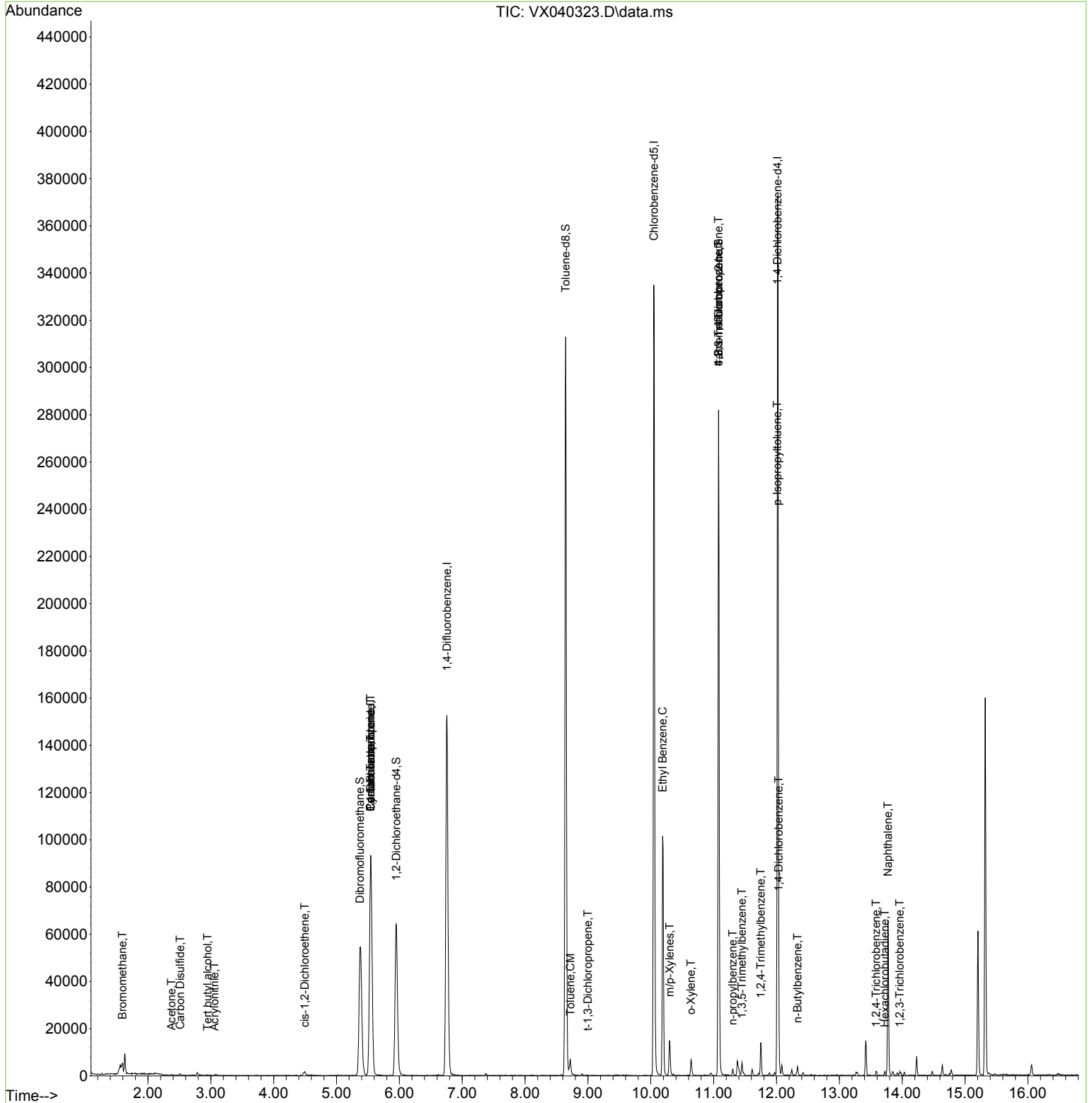
Compound	R.T.	QIon	Response	Conc	Units	Dev(Min)
-----						
Internal Standards						
1) Pentafluorobenzene	5.544	168	85251	50.000	ug/l	0.00
34) 1,4-Difluorobenzene	6.757	114	152523	50.000	ug/l	0.00
63) Chlorobenzene-d5	10.049	117	144935	50.000	ug/l	0.00
72) 1,4-Dichlorobenzene-d4	12.018	152	72384	50.000	ug/l	0.00
System Monitoring Compounds						
33) 1,2-Dichloroethane-d4	5.952	65	62936	49.623	ug/l	0.00
Spiked Amount	50.000	Range 78 - 117	Recovery	=	99.240%	
35) Dibromofluoromethane	5.373	113	49017	46.019	ug/l	-0.01
Spiked Amount	50.000	Range 75 - 124	Recovery	=	92.040%	
50) Toluene-d8	8.647	98	185582	46.578	ug/l	0.00
Spiked Amount	50.000	Range 92 - 112	Recovery	=	93.160%	
62) 4-Bromofluorobenzene	11.079	95	72397	44.553	ug/l	0.00
Spiked Amount	50.000	Range 83 - 123	Recovery	=	89.100%	
Target Compounds						
						Qvalue
5) Bromomethane	1.593	94	147	0.248	ug/l #	68
11) Tert butyl alcohol	2.947	59	101	0.409	ug/l #	78
15) Acrylonitrile	3.056	53	129	0.233	ug/l #	47
16) Acetone	2.374	43	322	0.618	ug/l #	68
17) Carbon Disulfide	2.514	76	671	0.292	ug/l #	76
20) Methylene Chloride	2.788	84	547	Below Cal	#	84
27) cis-1,2-Dichloroethene	4.495	96	1200	1.061	ug/l	65
31) Cyclohexane	5.544	56	2317	1.532	ug/l #	61
36) 1,1-Dichloropropene	5.544	75	7486	5.017	ug/l #	50
38) Carbon Tetrachloride	5.544	117	8972	6.324	ug/l #	15
52) Toluene	8.720	92	2352	0.861	ug/l	98
53) t-1,3-Dichloropropene	9.000	75	53	1.987	ug/l #	43
67) Ethyl Benzene	10.189	91	59507	11.046	ug/l	98
68) m/p-Xylenes	10.299	106	3654	1.796	ug/l	96
69) o-Xylene	10.640	106	1396	0.706	ug/l	84
76) 1,2,3-Trichloropropane	11.079	75	39202	26.744	ug/l #	39
78) n-propylbenzene	11.305	91	1946	0.315	ug/l	95
80) 1,3,5-Trimethylbenzene	11.451	105	2318	0.540	ug/l	98
81) trans-1,4-Dichloro-2-b...	11.079	75	39202	73.319	ug/l #	5
84) 1,2,4-Trimethylbenzene	11.750	105	6182	1.424	ug/l	95
86) p-Isopropyltoluene	12.012	119	943	0.213	ug/l #	66
88) 1,4-Dichlorobenzene	12.036	146	761	0.301	ug/l #	1
89) n-Butylbenzene	12.335	91	1268	0.296	ug/l	96
93) 1,2,4-Trichlorobenzene	13.585	180	531	0.336	ug/l #	80
94) Hexachlorobutadiene	13.725	225	340	0.539	ug/l	88
95) Naphthalene	13.774	128	39891	7.988	ug/l	99
96) 1,2,3-Trichlorobenzene	13.963	180	464	0.308	ug/l	83

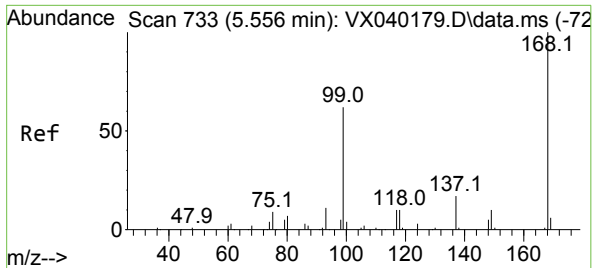
(#) = qualifier out of range (m) = manual integration (+) = signals summed

Data Path : Z:\voasrv\HPCHEM1\MSVOA\_X\Data\VX021924\  
 Data File : VX040323.D  
 Acq On : 19 Feb 2024 12:22  
 Operator : JC/MD  
 Sample : P1395-01 10X  
 Misc : 4.42g/5.0mL/100uL/5.0mL/MSVOA\_X/MEOH  
 ALS Vial : 7 Sample Multiplier: 1

Instrument :  
 MSVOA\_X  
 ClientSampleId :  
 B-4(4-6)

Quant Time: Feb 20 01:12:16 2024  
 Quant Method : Z:\voasrv\HPCHEM1\MSVOA\_X\Method\82X020924W.M  
 Quant Title : SW846 8260  
 QLast Update : Mon Feb 12 00:21:14 2024  
 Response via : Initial Calibration

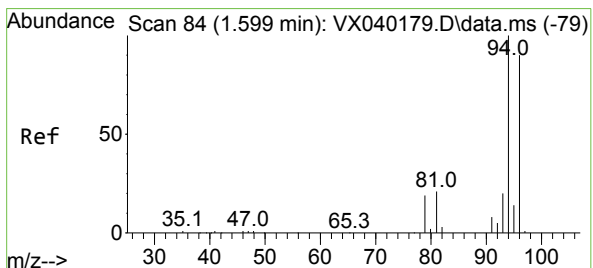
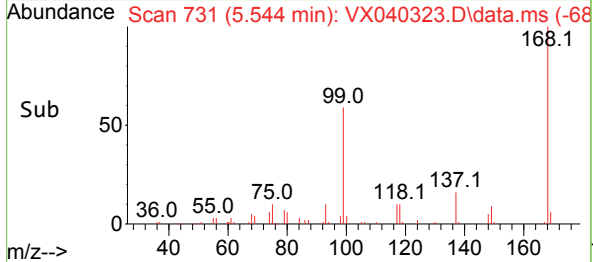
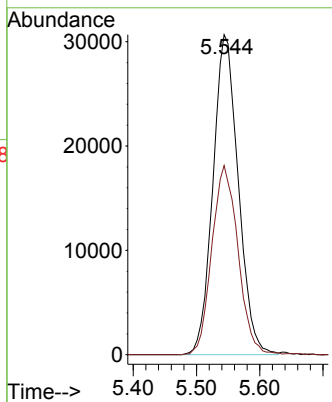
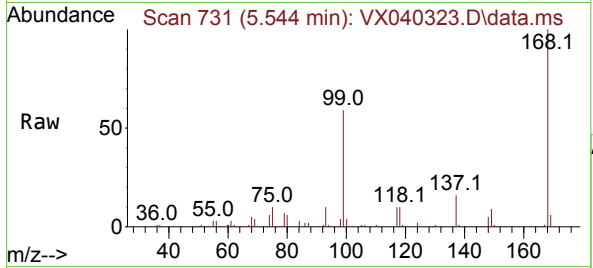




#1  
 Pentafluorobenzene  
 Concen: 50.000 ug/l  
 RT: 5.544 min Scan# 71  
 Delta R.T. -0.006 min  
 Lab File: VX040323.D  
 Acq: 19 Feb 2024 12:22

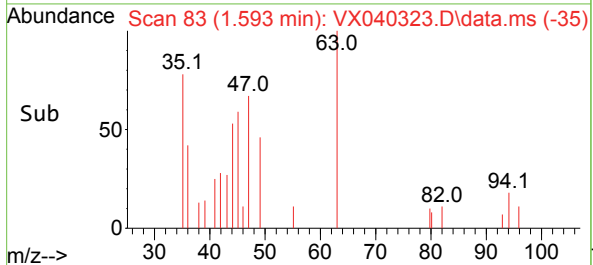
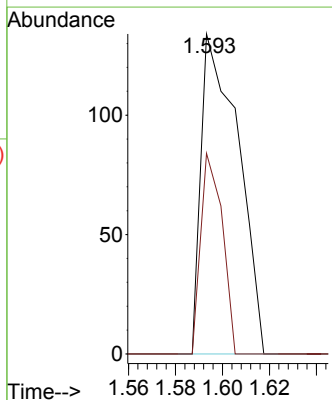
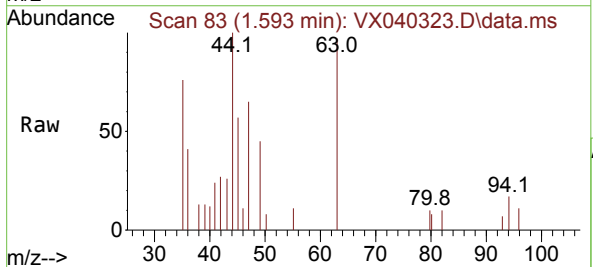
Instrument :  
 MSVOA\_X  
 ClientSampleId :  
 B-4(4-6)

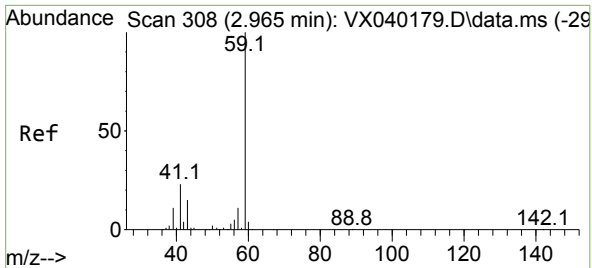
Tgt Ion:168 Resp: 85251  
 Ion Ratio Lower Upper  
 168 100  
 99 59.1 56.6 85.0



#5  
 Bromomethane  
 Concen: 0.248 ug/l  
 RT: 1.593 min Scan# 83  
 Delta R.T. -0.006 min  
 Lab File: VX040323.D  
 Acq: 19 Feb 2024 12:22

Tgt Ion: 94 Resp: 147  
 Ion Ratio Lower Upper  
 94 100  
 96 62.7 74.6 111.8#

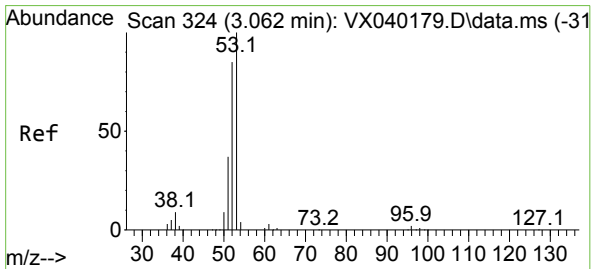
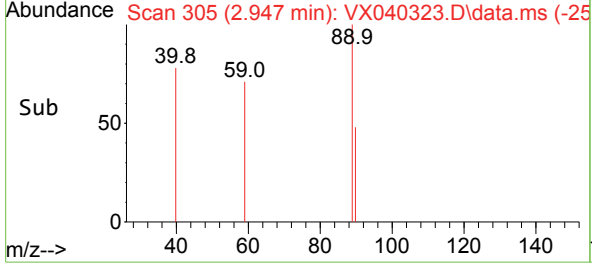
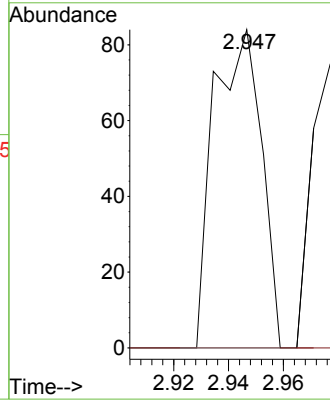
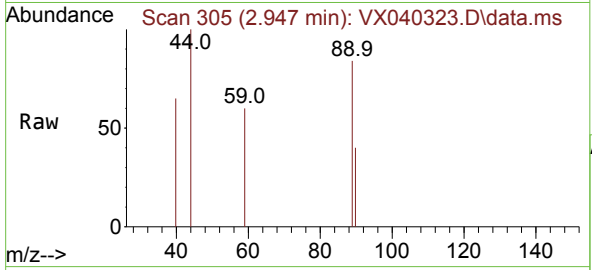




#11  
 Tert butyl alcohol  
 Concen: 0.409 ug/l  
 RT: 2.947 min Scan# 30  
 Delta R.T. -0.018 min  
 Lab File: VX040323.D  
 Acq: 19 Feb 2024 12:22

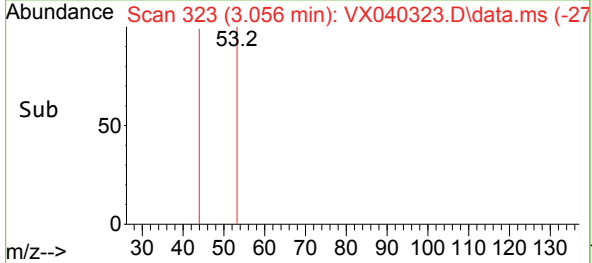
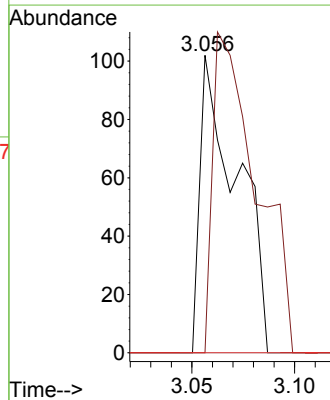
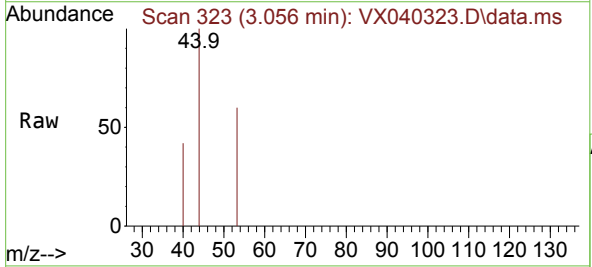
Instrument :  
 MSVOA\_X  
 ClientSampleId :  
 B-4(4-6)

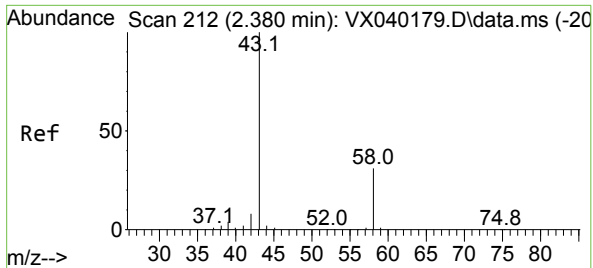
Tgt Ion: 59 Resp: 101  
 Ion Ratio Lower Upper  
 59 100  
 57 0.0 6.0 9.0#



#15  
 Acrylonitrile  
 Concen: 0.233 ug/l  
 RT: 3.056 min Scan# 323  
 Delta R.T. -0.006 min  
 Lab File: VX040323.D  
 Acq: 19 Feb 2024 12:22

Tgt Ion: 53 Resp: 129  
 Ion Ratio Lower Upper  
 53 100  
 52 126.4 66.0 99.0#  
 51 0.0 29.8 44.6#



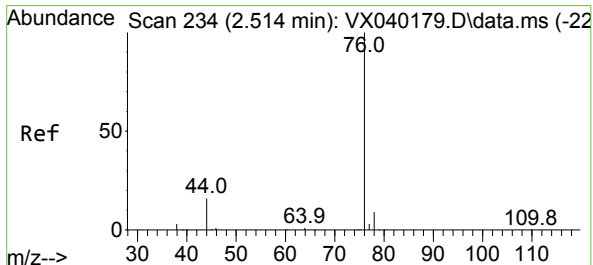
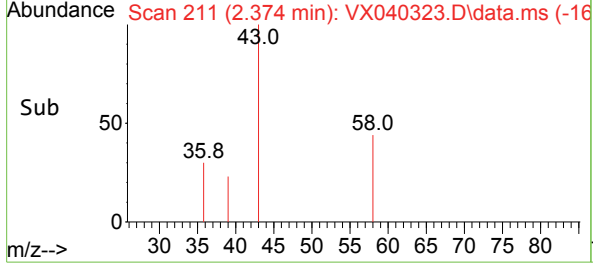
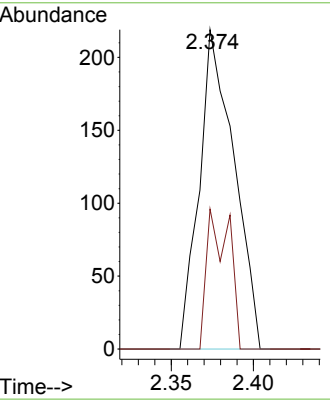
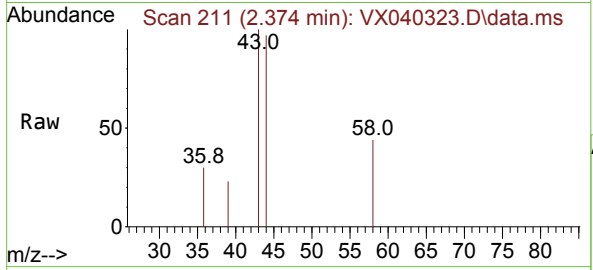


#16  
 Acetone  
 Concen: 0.618 ug/l  
 RT: 2.374 min Scan# 211  
 Delta R.T. -0.006 min  
 Lab File: VX040323.D  
 Acq: 19 Feb 2024 12:22

Instrument : MSVOA\_X  
 ClientSampleId : B-4(4-6)

Tgt Ion: 43 Resp: 322

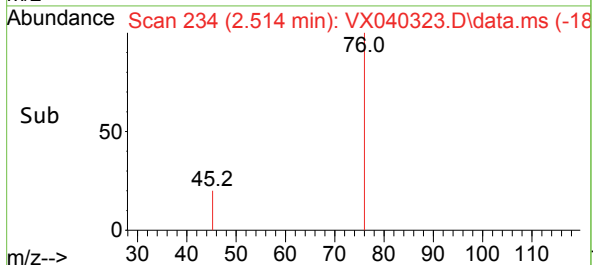
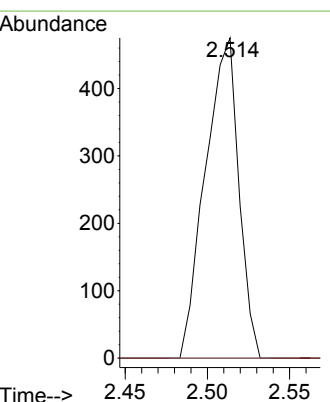
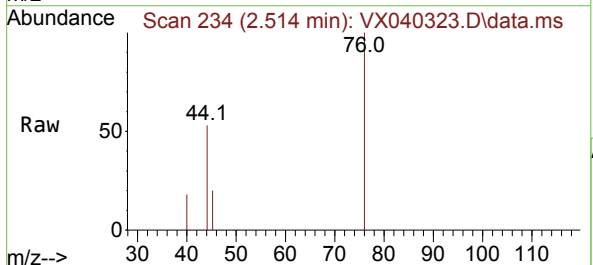
Ion	Ratio	Lower	Upper
43	100		
58	43.8	21.9	32.9#

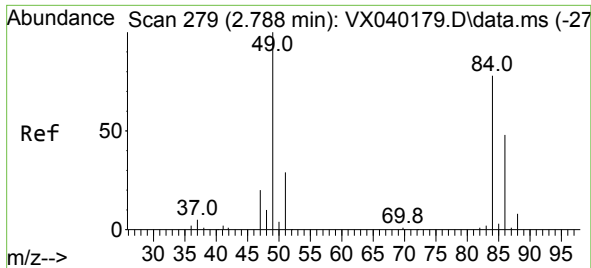


#17  
 Carbon Disulfide  
 Concen: 0.292 ug/l  
 RT: 2.514 min Scan# 234  
 Delta R.T. 0.006 min  
 Lab File: VX040323.D  
 Acq: 19 Feb 2024 12:22

Tgt Ion: 76 Resp: 671

Ion	Ratio	Lower	Upper
76	100		
78	0.0	7.0	10.6#



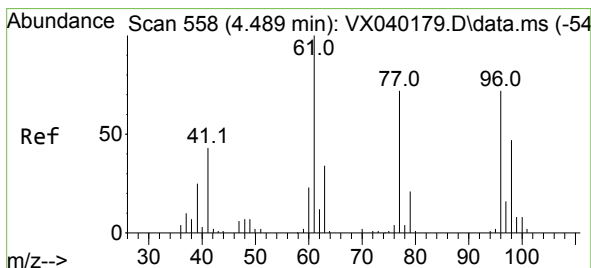
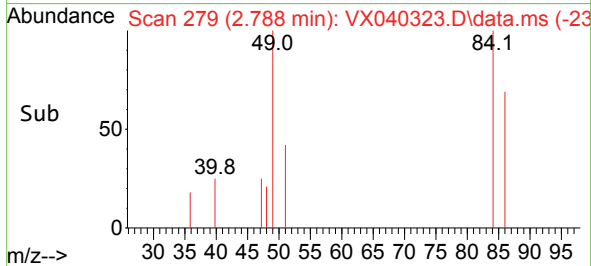
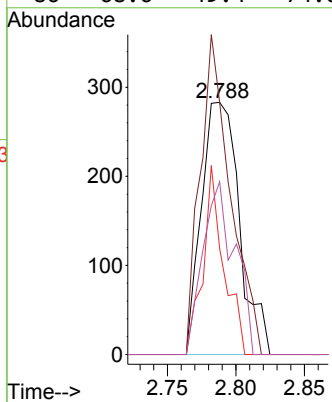
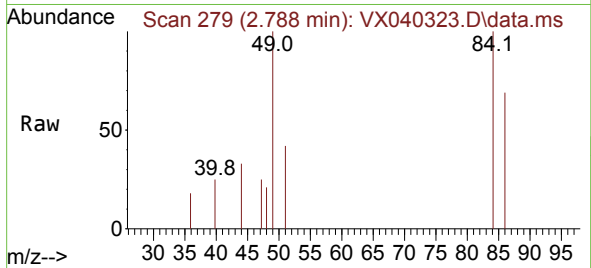


#20  
 Methylene Chloride  
 Concen: Below Cal  
 RT: 2.788 min Scan# 21  
 Delta R.T. 0.000 min  
 Lab File: VX040323.D  
 Acq: 19 Feb 2024 12:22

Instrument :  
 MSVOA\_X  
 ClientSampleId :  
 B-4(4-6)

Tgt Ion: 84 Resp: 547

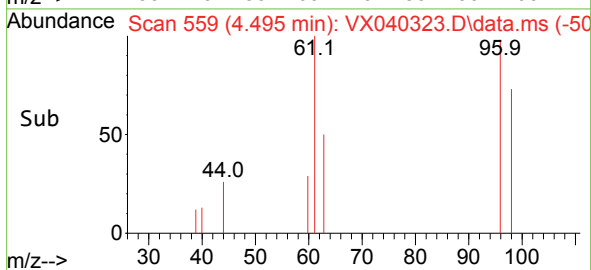
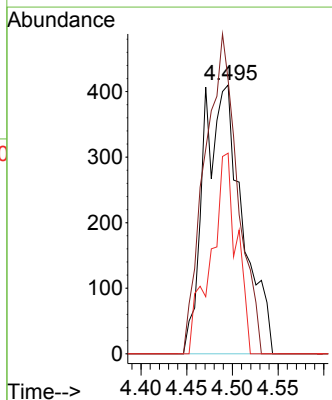
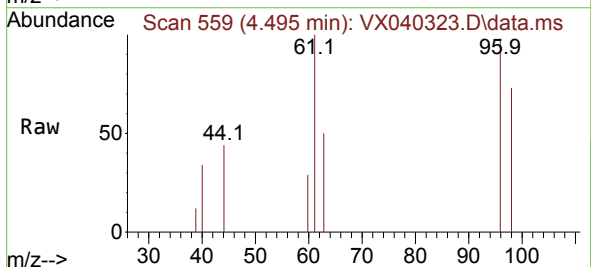
Ion	Ratio	Lower	Upper
84	100		
49	100.0	103.6	155.4#
51	42.0	33.8	50.6
86	68.6	49.4	74.0

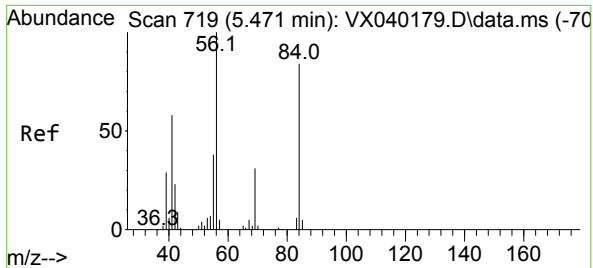


#27  
 cis-1,2-Dichloroethene  
 Concen: 1.061 ug/l  
 RT: 4.495 min Scan# 559  
 Delta R.T. 0.006 min  
 Lab File: VX040323.D  
 Acq: 19 Feb 2024 12:22

Tgt Ion: 96 Resp: 1200

Ion	Ratio	Lower	Upper
96	100		
61	102.0	0.0	312.2
98	50.2	0.0	129.0



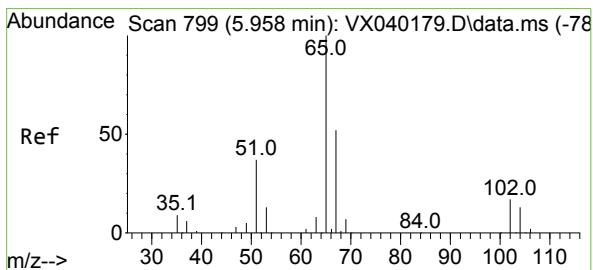
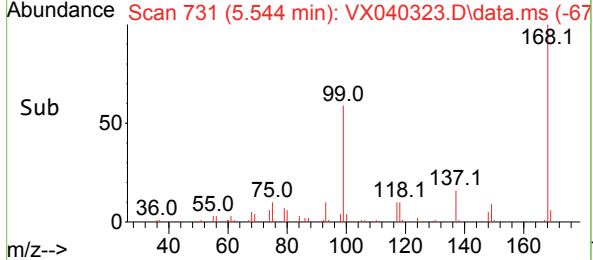
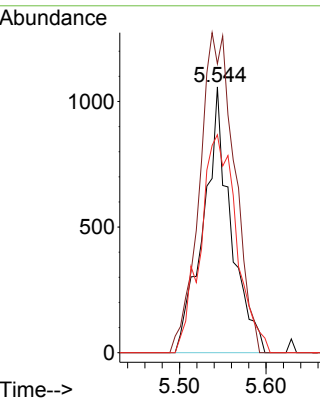
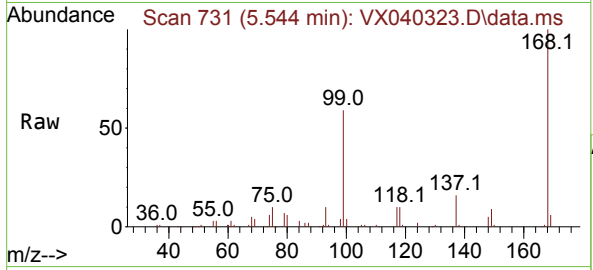


#31  
 Cyclohexane  
 Concen: 1.532 ug/l  
 RT: 5.544 min Scan# 719  
 Delta R.T. 0.073 min  
 Lab File: VX040323.D  
 Acq: 19 Feb 2024 12:22

Instrument : MSVOA\_X  
 ClientSampleId : B-4(4-6)

Tgt Ion: 56 Resp: 2317

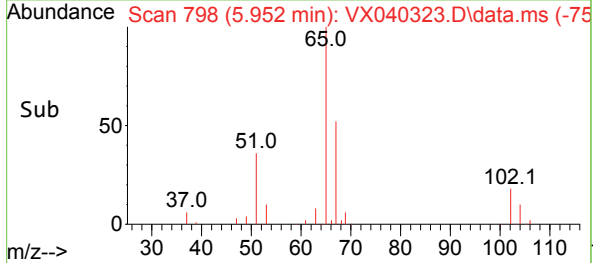
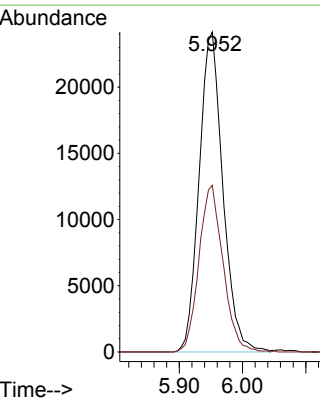
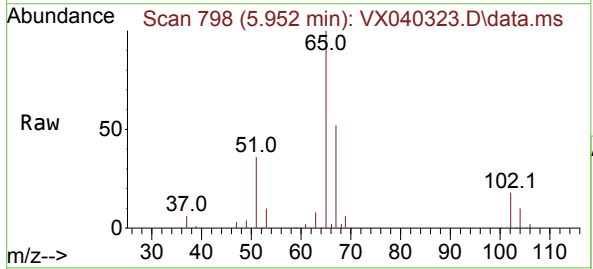
Ion	Ratio	Lower	Upper
56	100		
69	108.7	23.4	35.2#
84	82.0	65.9	98.9

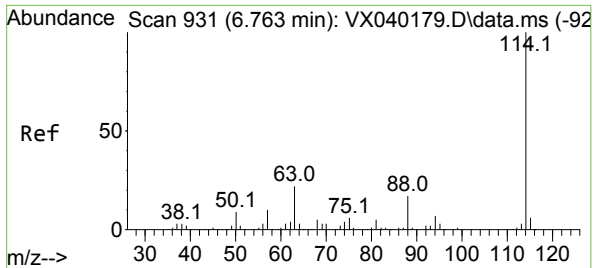


#33  
 1,2-Dichloroethane-d4  
 Concen: 49.623 ug/l  
 RT: 5.952 min Scan# 798  
 Delta R.T. -0.006 min  
 Lab File: VX040323.D  
 Acq: 19 Feb 2024 12:22

Tgt Ion: 65 Resp: 62936

Ion	Ratio	Lower	Upper
65	100		
67	52.9	0.0	100.2



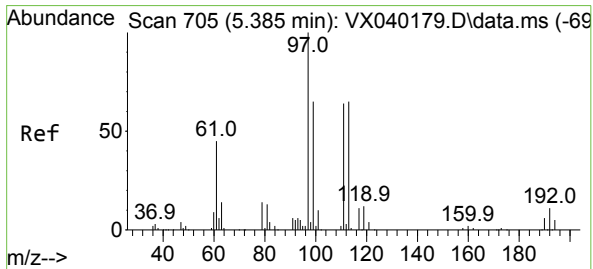
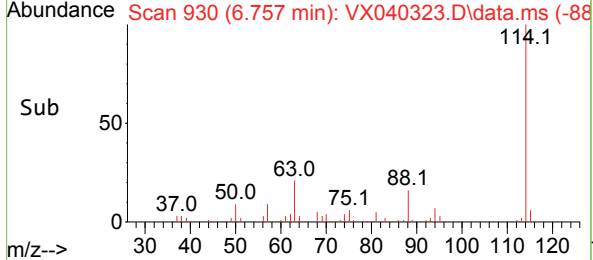
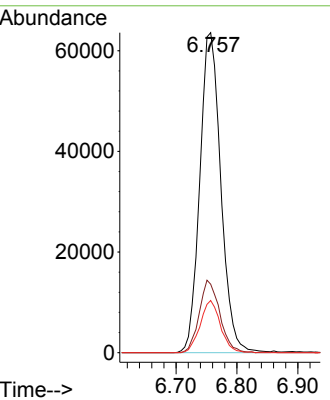
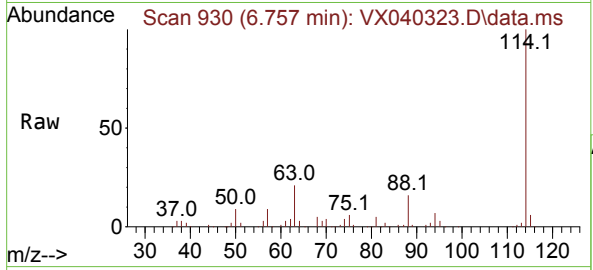


#34  
 1,4-Difluorobenzene  
 Concen: 50.000 ug/l  
 RT: 6.757 min Scan# 911  
 Delta R.T. -0.006 min  
 Lab File: VX040323.D  
 Acq: 19 Feb 2024 12:22

Instrument : MSVOA\_X  
 ClientSampleId : B-4(4-6)

Tgt Ion:114 Resp: 152523

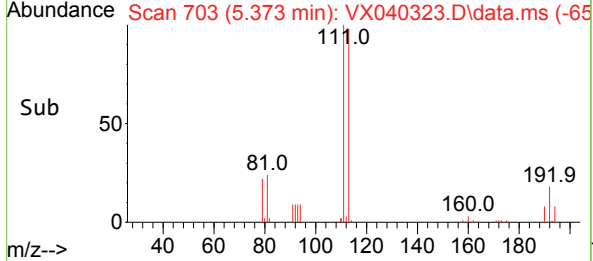
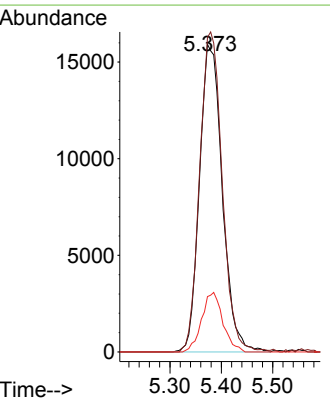
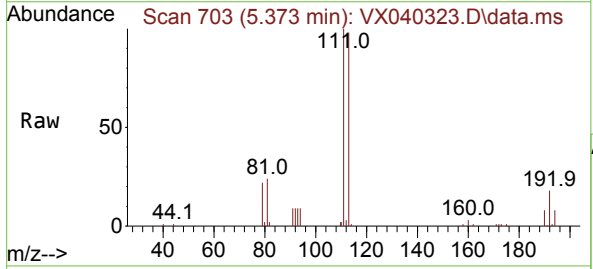
Ion	Ratio	Lower	Upper
114	100		
63	21.4	0.0	45.0
88	16.3	0.0	36.6



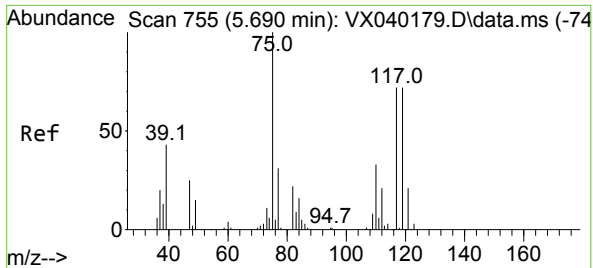
#35  
 Dibromofluoromethane  
 Concen: 46.019 ug/l  
 RT: 5.373 min Scan# 703  
 Delta R.T. -0.012 min  
 Lab File: VX040323.D  
 Acq: 19 Feb 2024 12:22

Tgt Ion:113 Resp: 49017

Ion	Ratio	Lower	Upper
113	100		
111	103.0	82.9	124.3
192	17.9	13.3	19.9

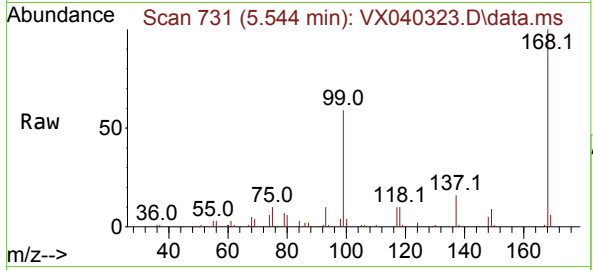






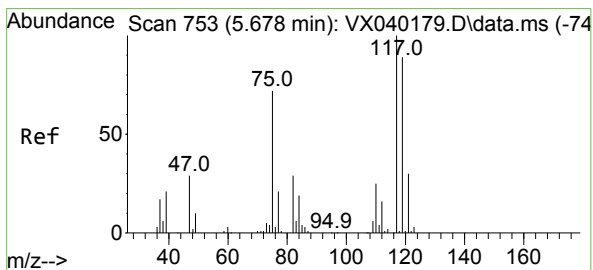
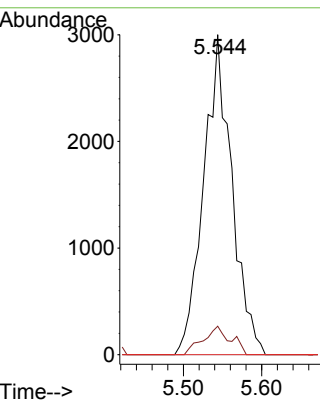
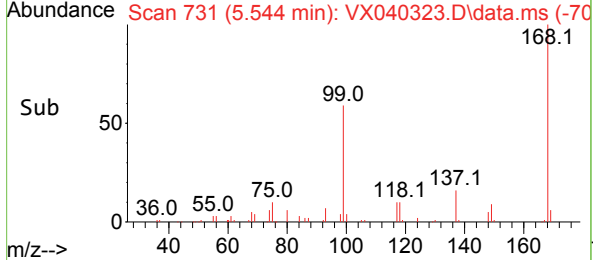
#36  
 1,1-Dichloropropene  
 Concen: 5.017 ug/l  
 RT: 5.544 min Scan# 711  
 Delta R.T. -0.152 min  
 Lab File: VX040323.D  
 Acq: 19 Feb 2024 12:22

Instrument : MSVOA\_X  
 ClientSampleId : B-4(4-6)

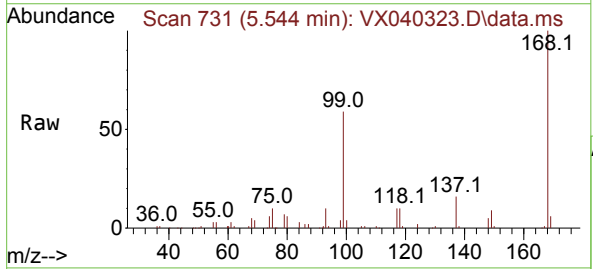


Tgt Ion: 75 Resp: 7486

Ion	Ratio	Lower	Upper
75	100		
110	8.6	17.0	50.9#
77	0.0	24.7	37.1#

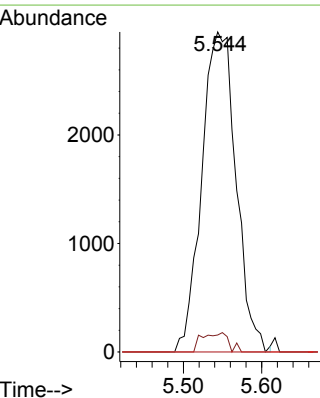
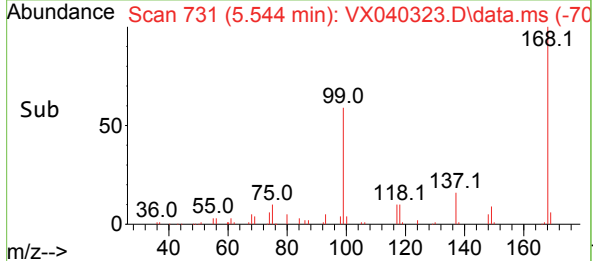


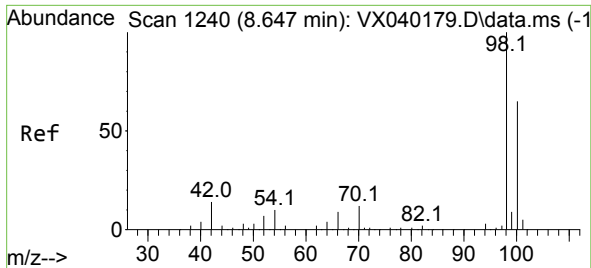
#38  
 Carbon Tetrachloride  
 Concen: 6.324 ug/l  
 RT: 5.544 min Scan# 731  
 Delta R.T. -0.128 min  
 Lab File: VX040323.D  
 Acq: 19 Feb 2024 12:22



Tgt Ion: 117 Resp: 8972

Ion	Ratio	Lower	Upper
117	100		
119	5.3	78.2	117.2#
121	0.0	24.4	36.6#

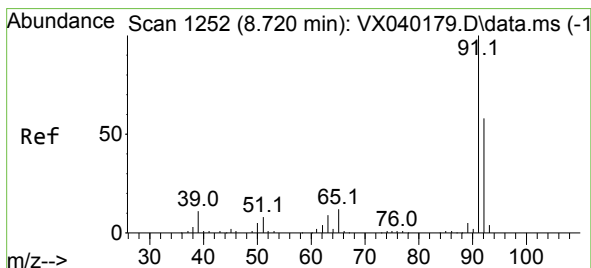
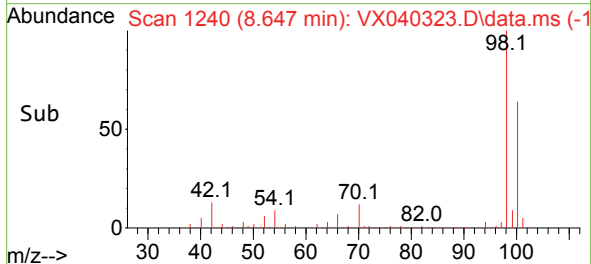
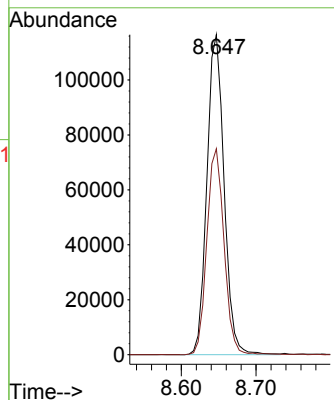
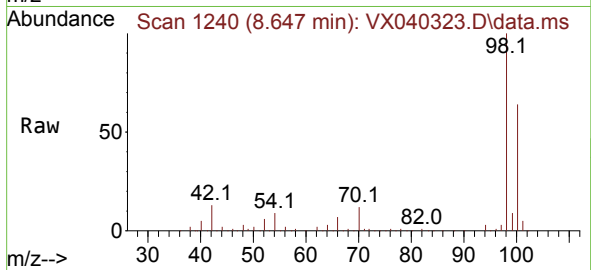




#50  
 Toluene-d8  
 Concen: 46.578 ug/l  
 RT: 8.647 min Scan# 11  
 Delta R.T. -0.006 min  
 Lab File: VX040323.D  
 Acq: 19 Feb 2024 12:22

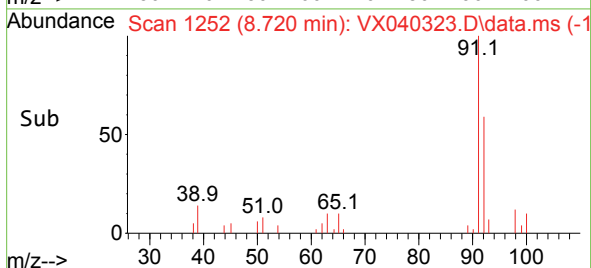
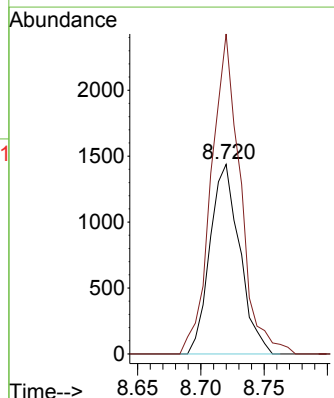
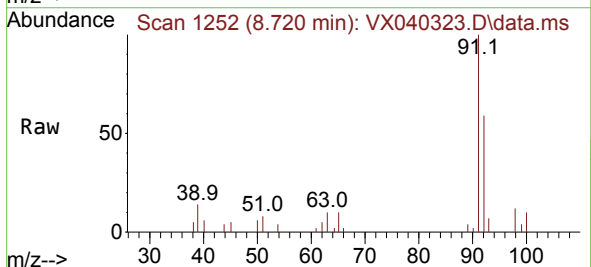
Instrument :  
 MSVOA\_X  
 ClientSampleId :  
 B-4(4-6)

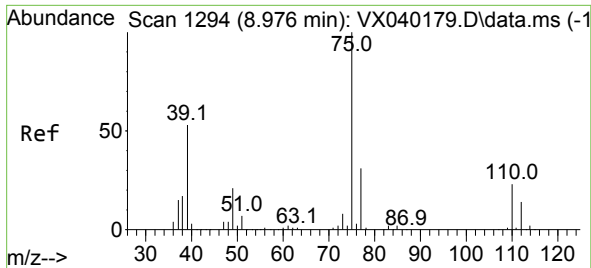
Tgt Ion: 98 Resp: 185582  
 Ion Ratio Lower Upper  
 98 100  
 100 64.4 53.1 79.7



#52  
 Toluene  
 Concen: 0.861 ug/l  
 RT: 8.720 min Scan# 1252  
 Delta R.T. 0.000 min  
 Lab File: VX040323.D  
 Acq: 19 Feb 2024 12:22

Tgt Ion: 92 Resp: 2352  
 Ion Ratio Lower Upper  
 92 100  
 91 165.2 134.2 201.2

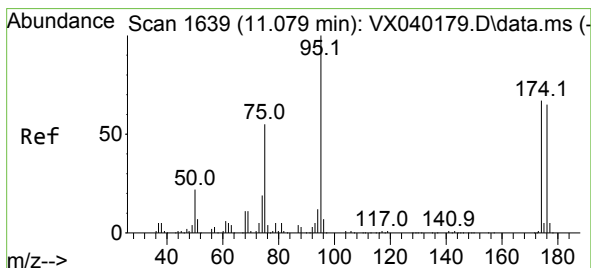
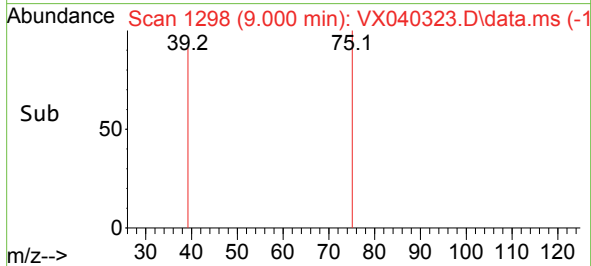
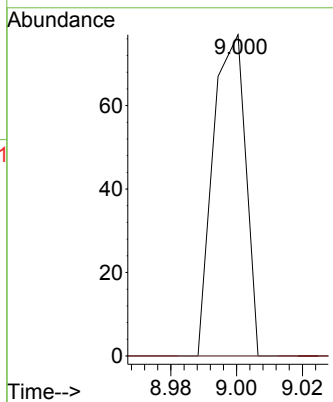
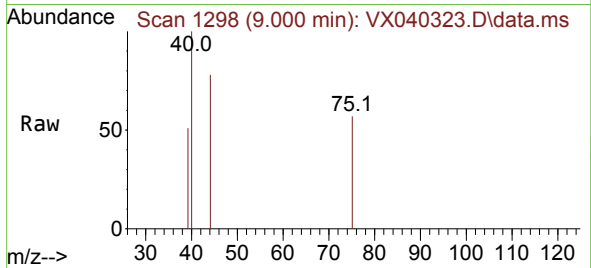




#53  
 t-1,3-Dichloropropene  
 Concen: 1.987 ug/l  
 RT: 9.000 min Scan# 11  
 Delta R.T. 0.024 min  
 Lab File: VX040323.D  
 Acq: 19 Feb 2024 12:22

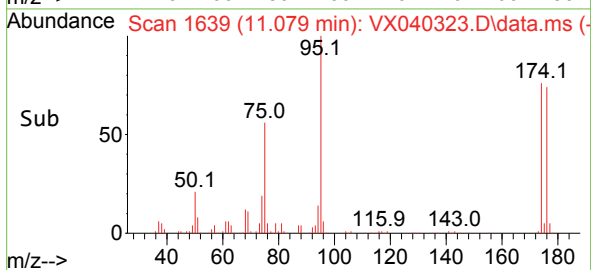
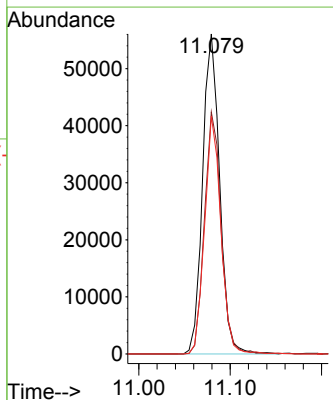
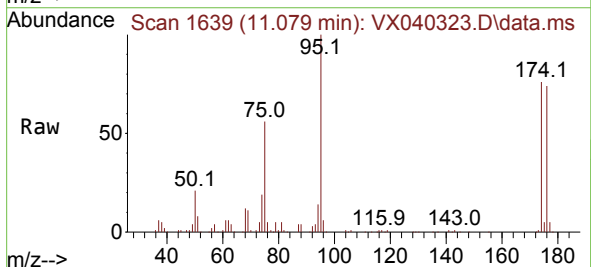
Instrument :  
 MSVOA\_X  
 ClientSampleId :  
 B-4(4-6)

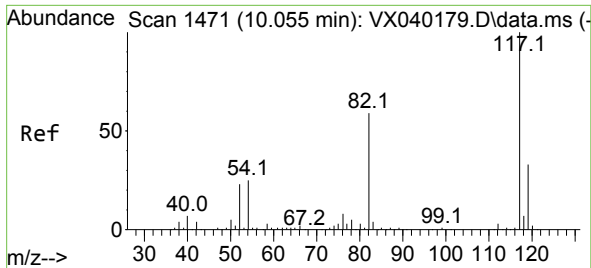
Tgt Ion: 75 Resp: 53  
 Ion Ratio Lower Upper  
 75 100  
 77 0.0 25.7 38.5#



#62  
 4-Bromofluorobenzene  
 Concen: 44.553 ug/l  
 RT: 11.079 min Scan# 1639  
 Delta R.T. 0.000 min  
 Lab File: VX040323.D  
 Acq: 19 Feb 2024 12:22

Tgt Ion: 95 Resp: 72397  
 Ion Ratio Lower Upper  
 95 100  
 174 74.2 0.0 135.6  
 176 71.2 0.0 131.0

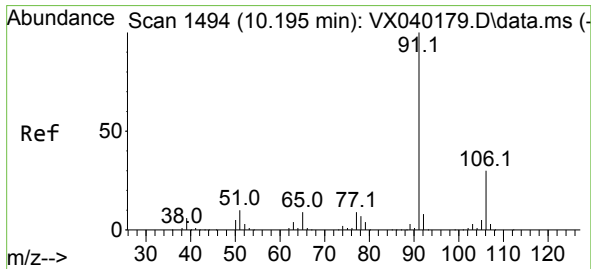
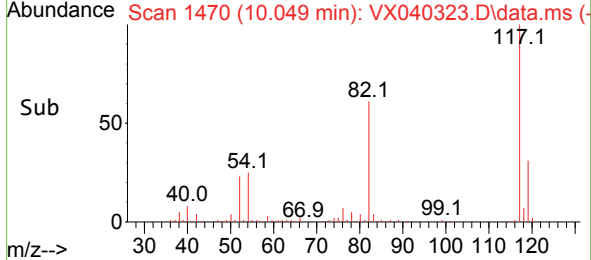
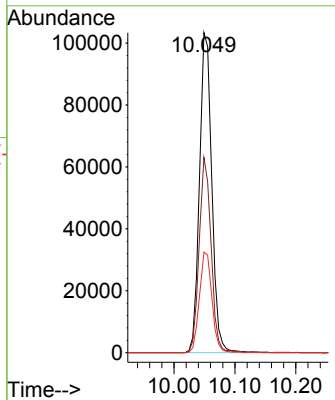
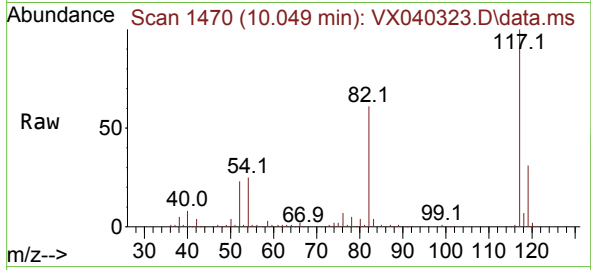




#63  
 Chlorobenzene-d5  
 Concen: 50.000 ug/l  
 RT: 10.049 min Scan# 14  
 Delta R.T. -0.006 min  
 Lab File: VX040323.D  
 Acq: 19 Feb 2024 12:22

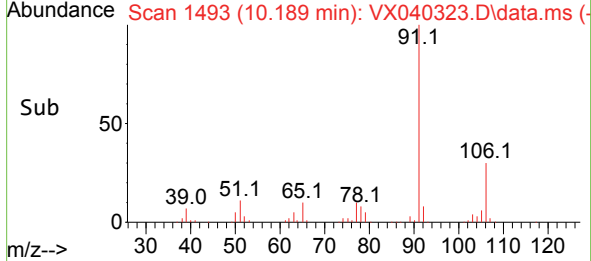
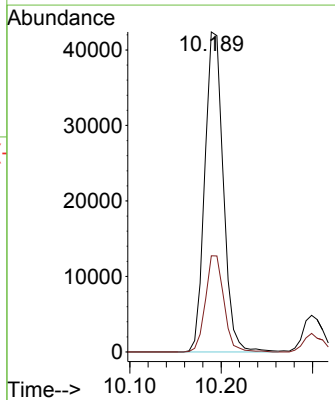
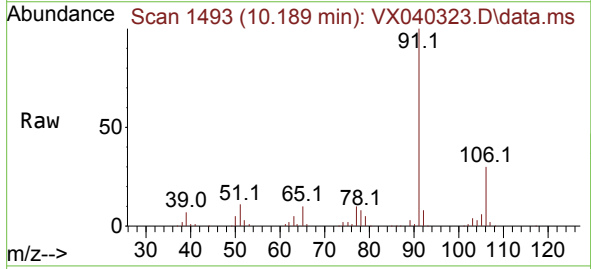
**Instrument :** MSVOA\_X  
**ClientSampleId :** B-4(4-6)

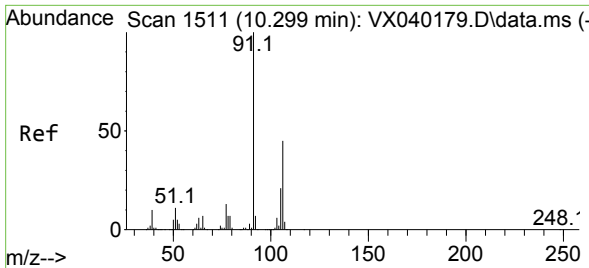
Tgt Ion	Resp	Lower	Upper
117	144935		
117	100		
82	61.0	46.2	69.4
119	31.4	25.5	38.3



#67  
 Ethyl Benzene  
 Concen: 11.046 ug/l  
 RT: 10.189 min Scan# 1493  
 Delta R.T. -0.006 min  
 Lab File: VX040323.D  
 Acq: 19 Feb 2024 12:22

Tgt Ion	Resp	Lower	Upper
91	59507		
91	100		
106	30.1	24.9	37.3

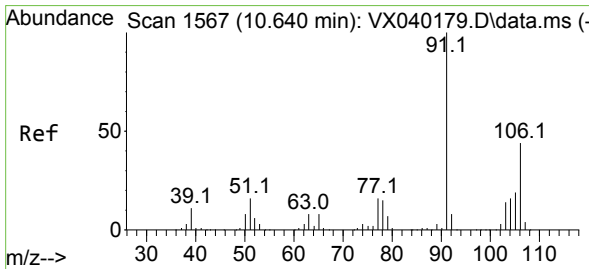
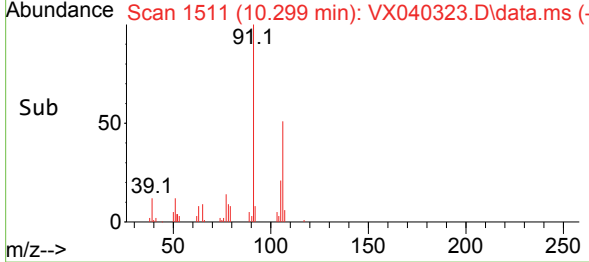
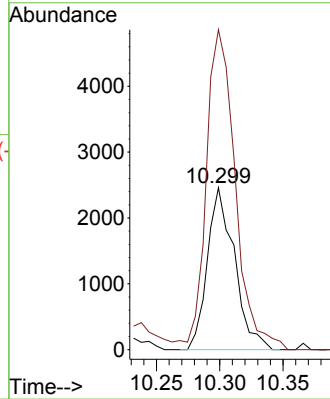
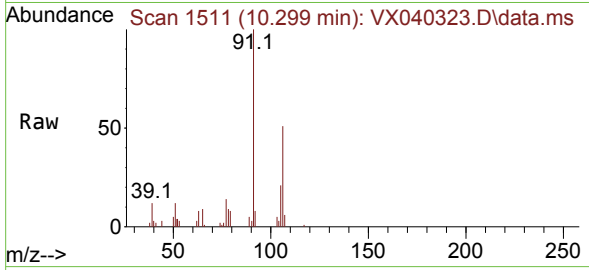




#68  
 m/p-Xylenes  
 Concen: 1.796 ug/l  
 RT: 10.299 min Scan# 1511  
 Delta R.T. 0.000 min  
 Lab File: VX040323.D  
 Acq: 19 Feb 2024 12:22

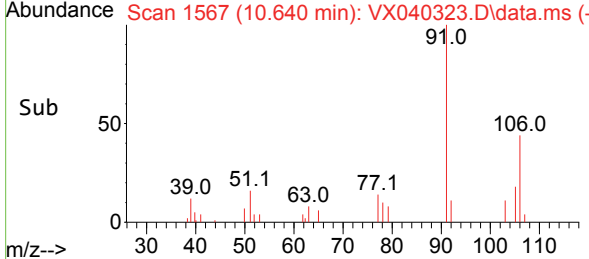
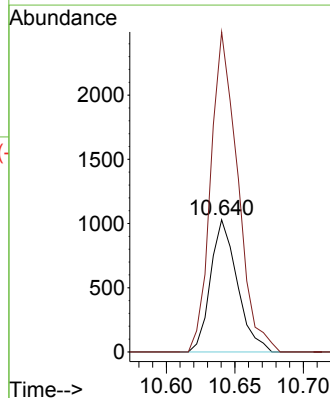
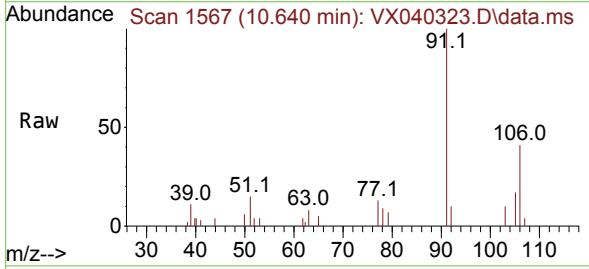
Instrument : MSVOA\_X  
 ClientSampleId : B-4(4-6)

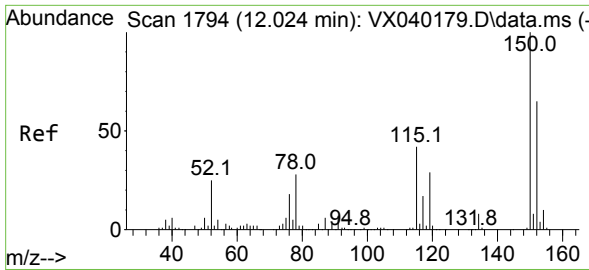
Tgt Ion:106 Resp: 3654  
 Ion Ratio Lower Upper  
 106 100  
 91 212.9 165.5 248.3



#69  
 o-Xylene  
 Concen: 0.706 ug/l  
 RT: 10.640 min Scan# 1567  
 Delta R.T. 0.000 min  
 Lab File: VX040323.D  
 Acq: 19 Feb 2024 12:22

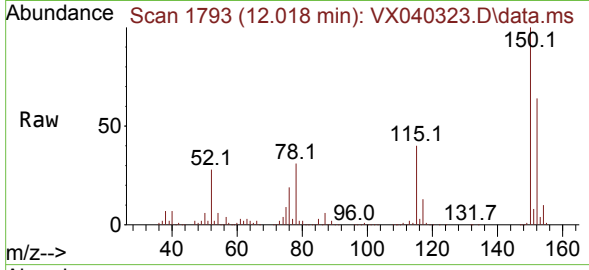
Tgt Ion:106 Resp: 1396  
 Ion Ratio Lower Upper  
 106 100  
 91 243.7 108.9 326.8



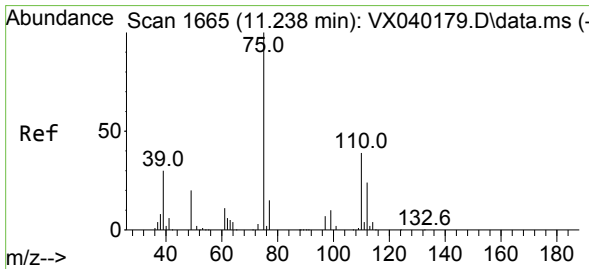
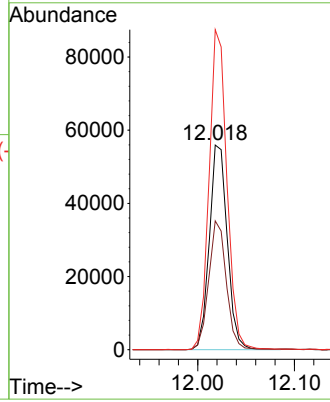
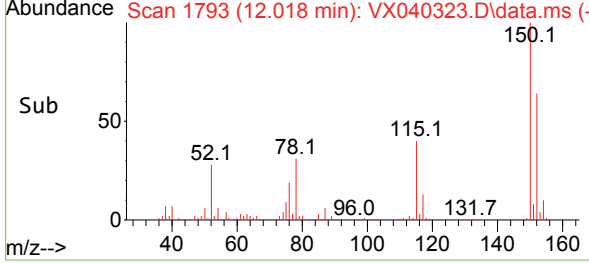


#72  
 1,4-Dichlorobenzene-d4  
 Concen: 50.000 ug/l  
 RT: 12.018 min Scan# 1  
 Delta R.T. -0.006 min  
 Lab File: VX040323.D  
 Acq: 19 Feb 2024 12:22

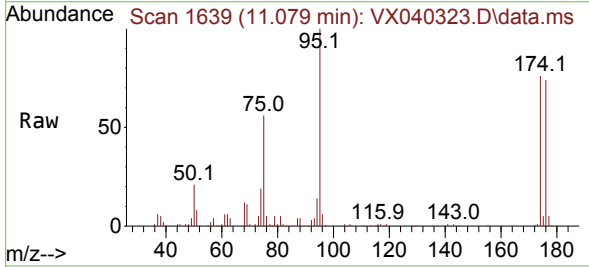
Instrument :  
 MSVOA\_X  
 ClientSampleId :  
 B-4(4-6)



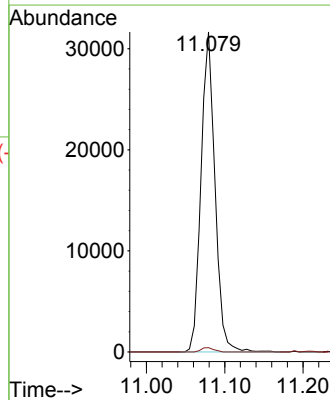
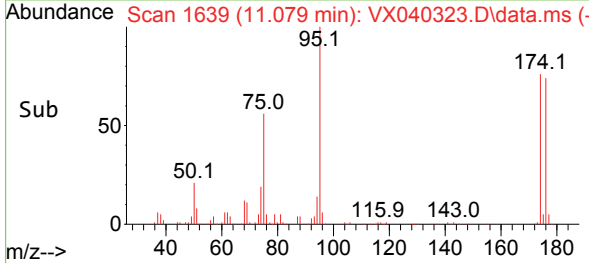
Tgt Ion:152 Resp: 72384  
 Ion Ratio Lower Upper  
 152 100  
 115 61.7 43.3 129.9  
 150 155.3 0.0 345.0

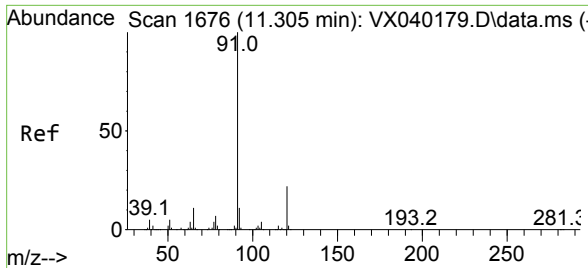


#76  
 1,2,3-Trichloropropane  
 Concen: 26.744 ug/l  
 RT: 11.079 min Scan# 1639  
 Delta R.T. -0.158 min  
 Lab File: VX040323.D  
 Acq: 19 Feb 2024 12:22



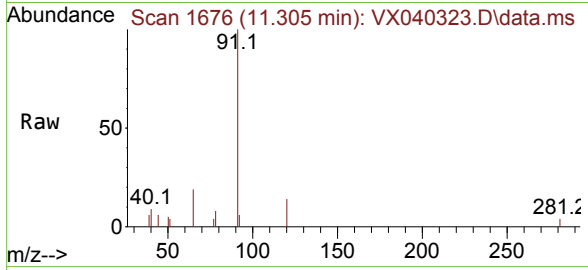
Tgt Ion: 75 Resp: 39202  
 Ion Ratio Lower Upper  
 75 100  
 77 1.2 19.1 57.5#



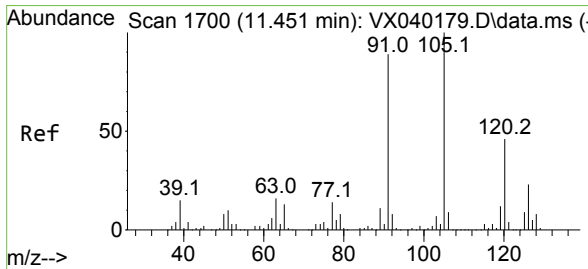
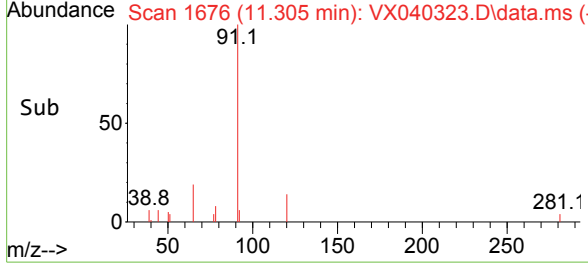
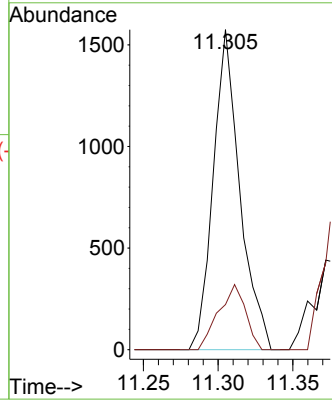


#78  
 n-propylbenzene  
 Concen: 0.315 ug/l  
 RT: 11.305 min Scan# 11  
 Delta R.T. 0.000 min  
 Lab File: VX040323.D  
 Acq: 19 Feb 2024 12:22

Instrument : MSVOA\_X  
 ClientSampleId : B-4(4-6)

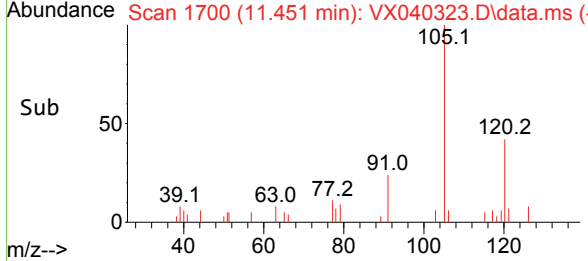
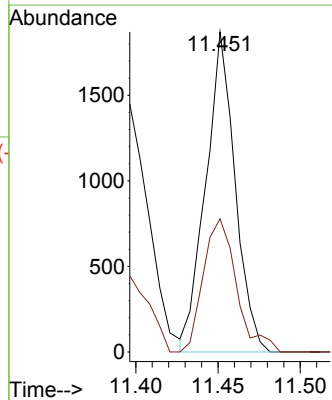
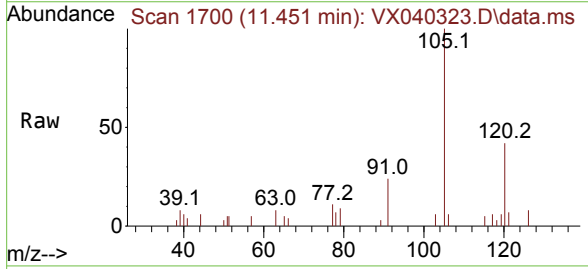


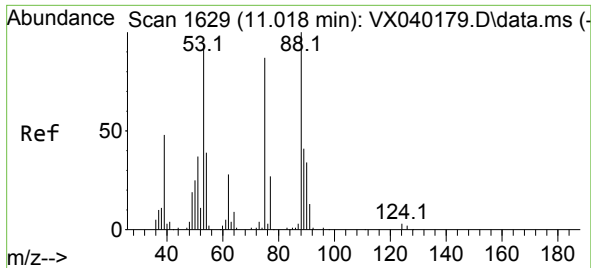
Tgt Ion: 91 Resp: 1946  
 Ion Ratio Lower Upper  
 91 100  
 120 20.6 11.5 34.4



#80  
 1,3,5-Trimethylbenzene  
 Concen: 0.540 ug/l  
 RT: 11.451 min Scan# 1700  
 Delta R.T. 0.000 min  
 Lab File: VX040323.D  
 Acq: 19 Feb 2024 12:22

Tgt Ion: 105 Resp: 2318  
 Ion Ratio Lower Upper  
 105 100  
 120 46.9 24.1 72.3

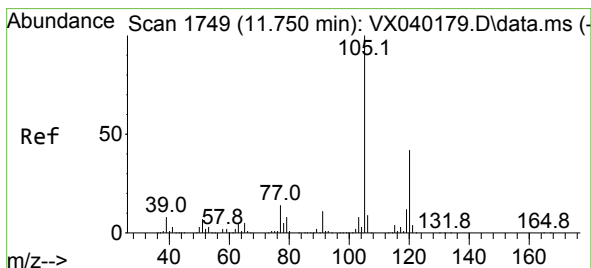
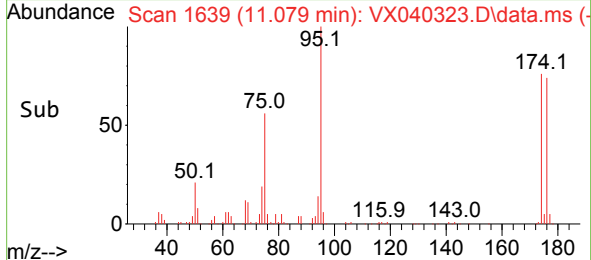
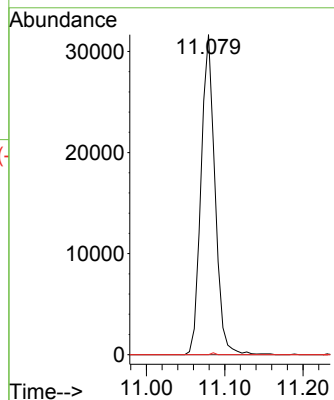
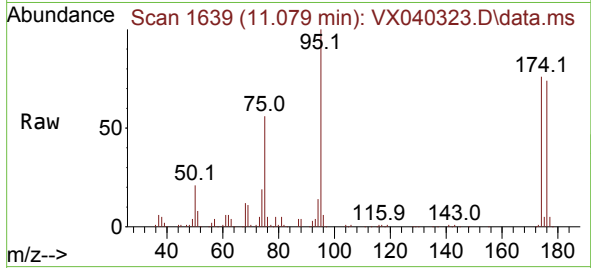




#81  
 trans-1,4-Dichloro-2-butene  
 Concen: 73.319 ug/l  
 RT: 11.079 min Scan# 1639  
 Delta R.T. 0.061 min  
 Lab File: VX040323.D  
 Acq: 19 Feb 2024 12:22

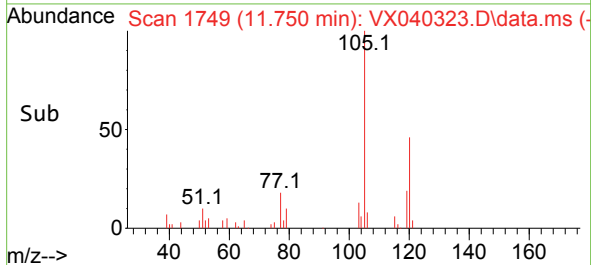
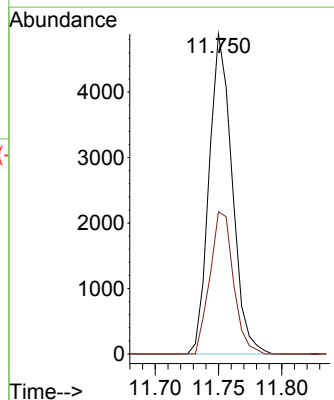
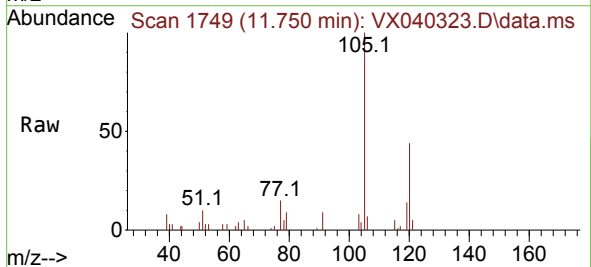
Instrument : MSVOA\_X  
 ClientSampleId : B-4(4-6)

Tgt Ion: 75 Resp: 39202  
 Ion Ratio Lower Upper  
 75 100  
 53 0.0 90.5 135.7#  
 89 0.2 36.9 55.3#

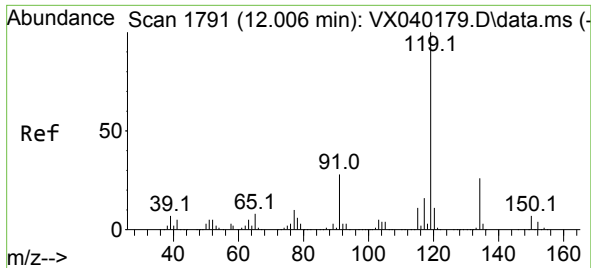


#84  
 1,2,4-Trimethylbenzene  
 Concen: 1.424 ug/l  
 RT: 11.750 min Scan# 1749  
 Delta R.T. 0.000 min  
 Lab File: VX040323.D  
 Acq: 19 Feb 2024 12:22

Tgt Ion: 105 Resp: 6182  
 Ion Ratio Lower Upper  
 105 100  
 120 45.3 21.2 63.6



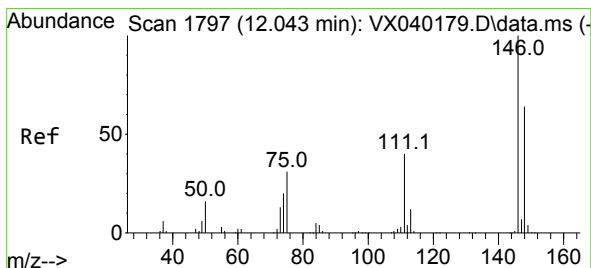
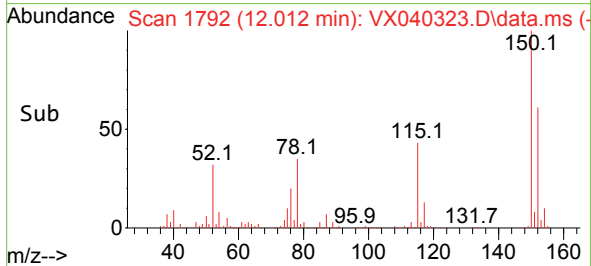
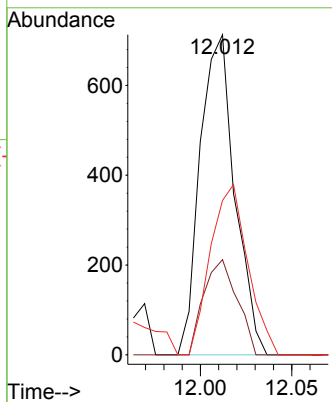
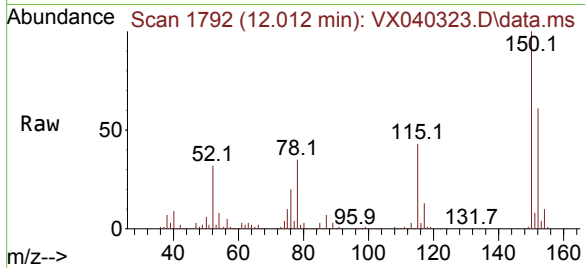




#86  
 p-Isopropyltoluene  
 Concen: 0.213 ug/l  
 RT: 12.012 min Scan# 1792  
 Delta R.T. 0.006 min  
 Lab File: VX040323.D  
 Acq: 19 Feb 2024 12:22

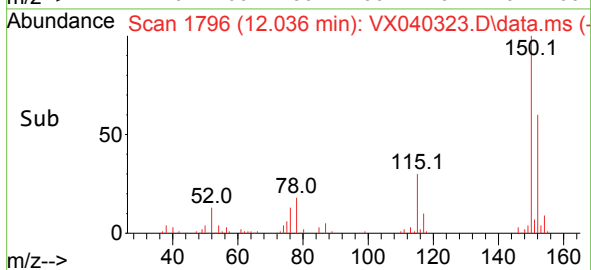
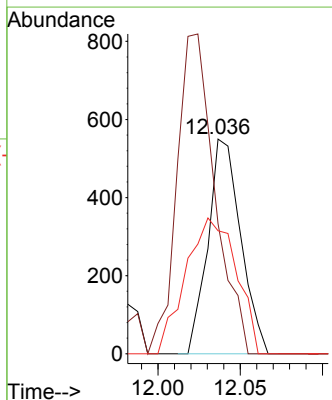
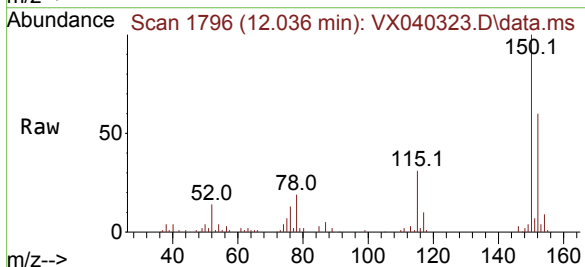
Instrument :  
 MSVOA\_X  
 ClientSampleId :  
 B-4(4-6)

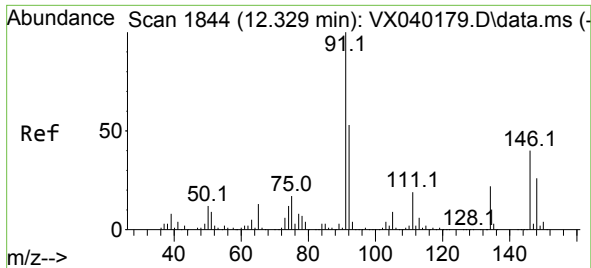
Tgt Ion	Resp	Lower	Upper
119	100		
134	28.6	12.8	38.3
91	57.3	13.1	39.3#



#88  
 1,4-Dichlorobenzene  
 Concen: 0.301 ug/l  
 RT: 12.036 min Scan# 1796  
 Delta R.T. -0.006 min  
 Lab File: VX040323.D  
 Acq: 19 Feb 2024 12:22

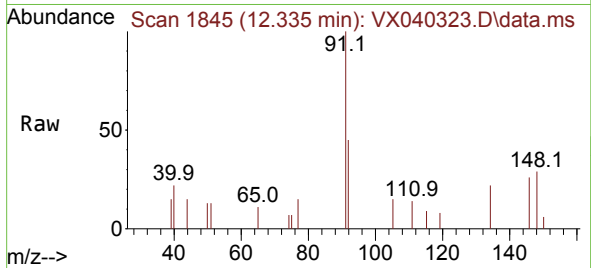
Tgt Ion	Resp	Lower	Upper
146	100		
111	172.4	21.3	63.7#
148	97.8	31.8	95.4#





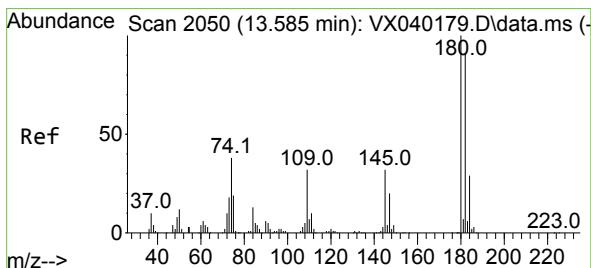
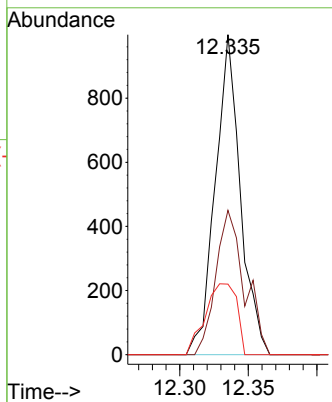
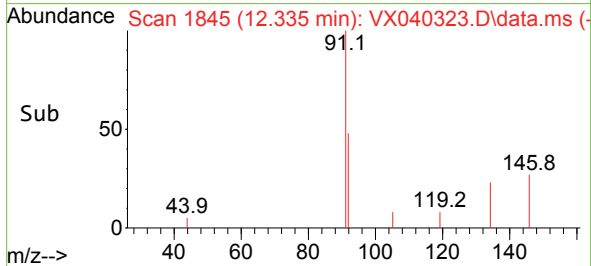
#89  
 n-Butylbenzene  
 Concen: 0.296 ug/l  
 RT: 12.335 min Scan# 1845  
 Delta R.T. 0.000 min  
 Lab File: VX040323.D  
 Acq: 19 Feb 2024 12:22

Instrument : MSVOA\_X  
 ClientSampleId : B-4(4-6)

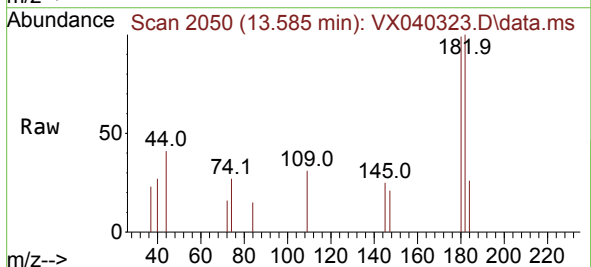


Tgt Ion: 91 Resp: 1268

Ion	Ratio	Lower	Upper
91	100		
92	51.8	27.4	82.0
134	27.8	12.6	37.8

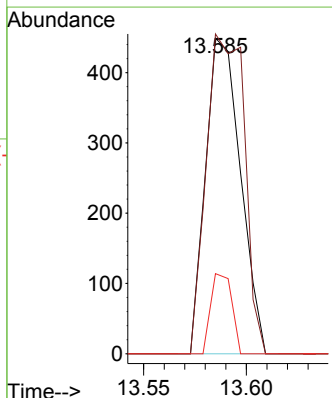
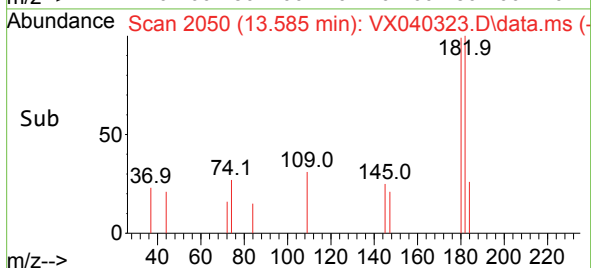


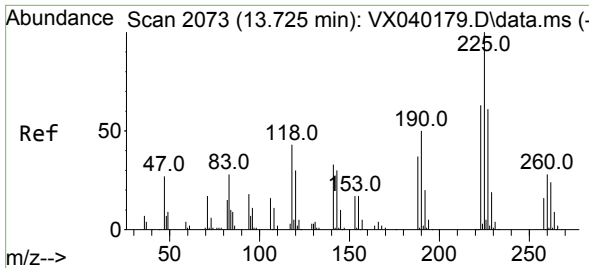
#93  
 1,2,4-Trichlorobenzene  
 Concen: 0.336 ug/l  
 RT: 13.585 min Scan# 2050  
 Delta R.T. 0.000 min  
 Lab File: VX040323.D  
 Acq: 19 Feb 2024 12:22



Tgt Ion: 180 Resp: 531

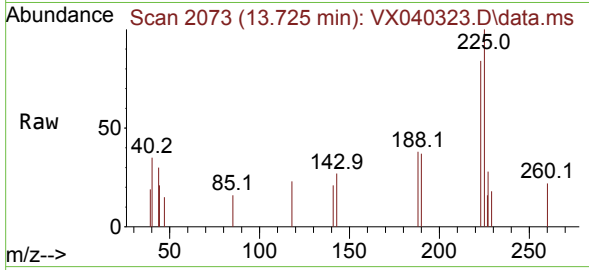
Ion	Ratio	Lower	Upper
180	100		
182	110.2	48.3	144.8
145	15.3	18.0	54.0





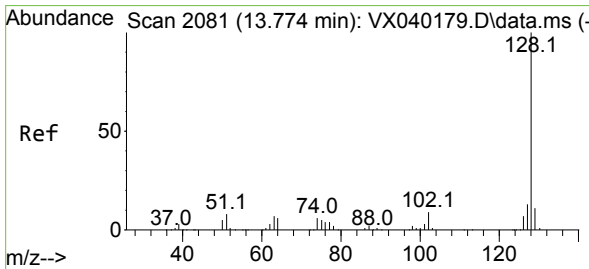
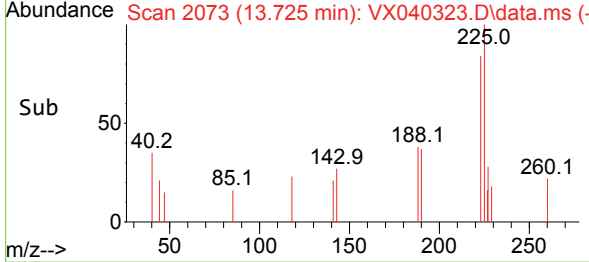
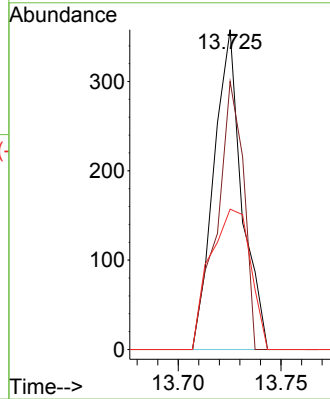
#94  
 Hexachlorobutadiene  
 Concen: 0.539 ug/l  
 RT: 13.725 min Scan# 2073  
 Delta R.T. 0.000 min  
 Lab File: VX040323.D  
 Acq: 19 Feb 2024 12:22

Instrument :  
 MSVOA\_X  
 ClientSampleId :  
 B-4(4-6)



Tgt Ion:225 Resp: 340

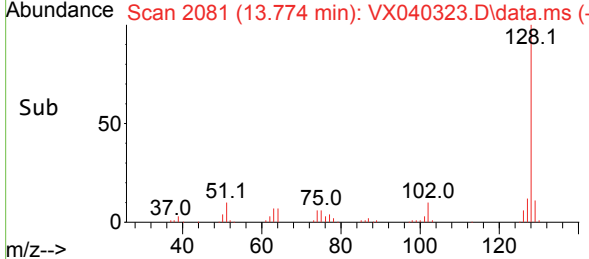
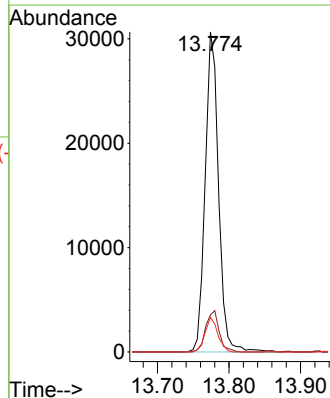
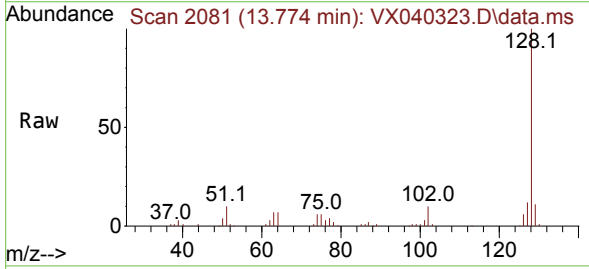
Ion	Ratio	Lower	Upper
225	100		
223	78.8	31.1	93.2
227	63.5	32.5	97.5

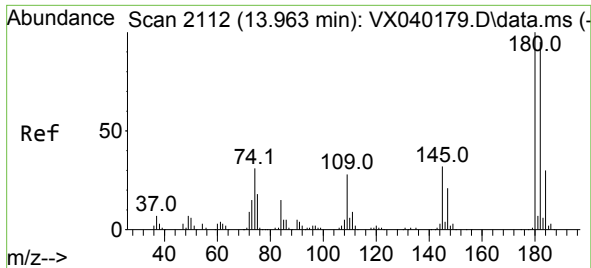


#95  
 Naphthalene  
 Concen: 7.988 ug/l  
 RT: 13.774 min Scan# 2081  
 Delta R.T. 0.000 min  
 Lab File: VX040323.D  
 Acq: 19 Feb 2024 12:22

Tgt Ion:128 Resp: 39891

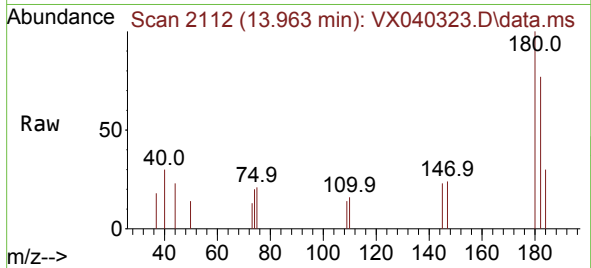
Ion	Ratio	Lower	Upper
128	100		
127	13.0	10.3	15.5
129	10.3	8.8	13.2





#96  
 1,2,3-Trichlorobenzene  
 Concen: 0.308 ug/l  
 RT: 13.963 min Scan# 21  
 Delta R.T. 0.000 min  
 Lab File: VX040323.D  
 Acq: 19 Feb 2024 12:22

Instrument :  
 MSVOA\_X  
 ClientSampleId :  
 B-4(4-6)



Tgt Ion:180 Resp: 464

Ion	Ratio	Lower	Upper
180	100		
182	110.3	46.9	140.6
145	26.9	17.8	53.5

